

# THE CITY & EXPERIENCING ITS LAYERED PAST

- three interventions following Kostverlorenvaart -

1. 1675



Noorderkerk  
Nieuwe Kerk  
Stadhuis  
Zuiderkerkstoren  
Westertoren

2. 1850

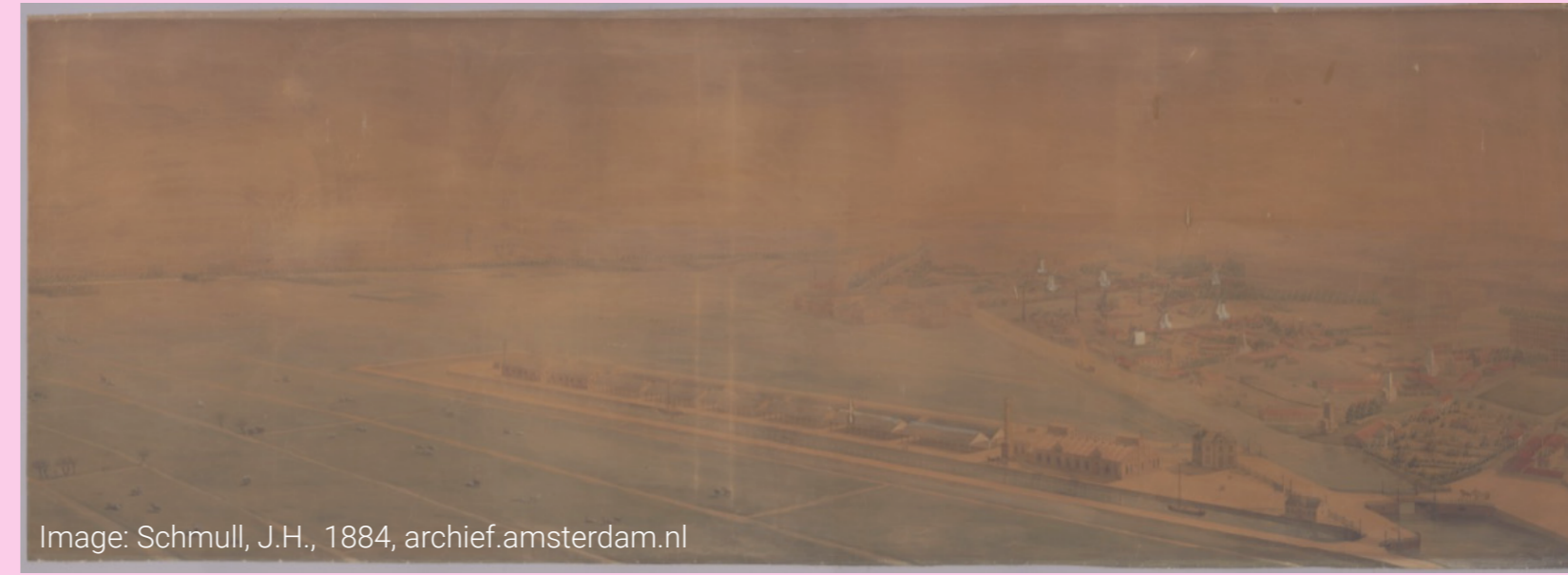


Het Luipaard  
De Otter

4. 1950



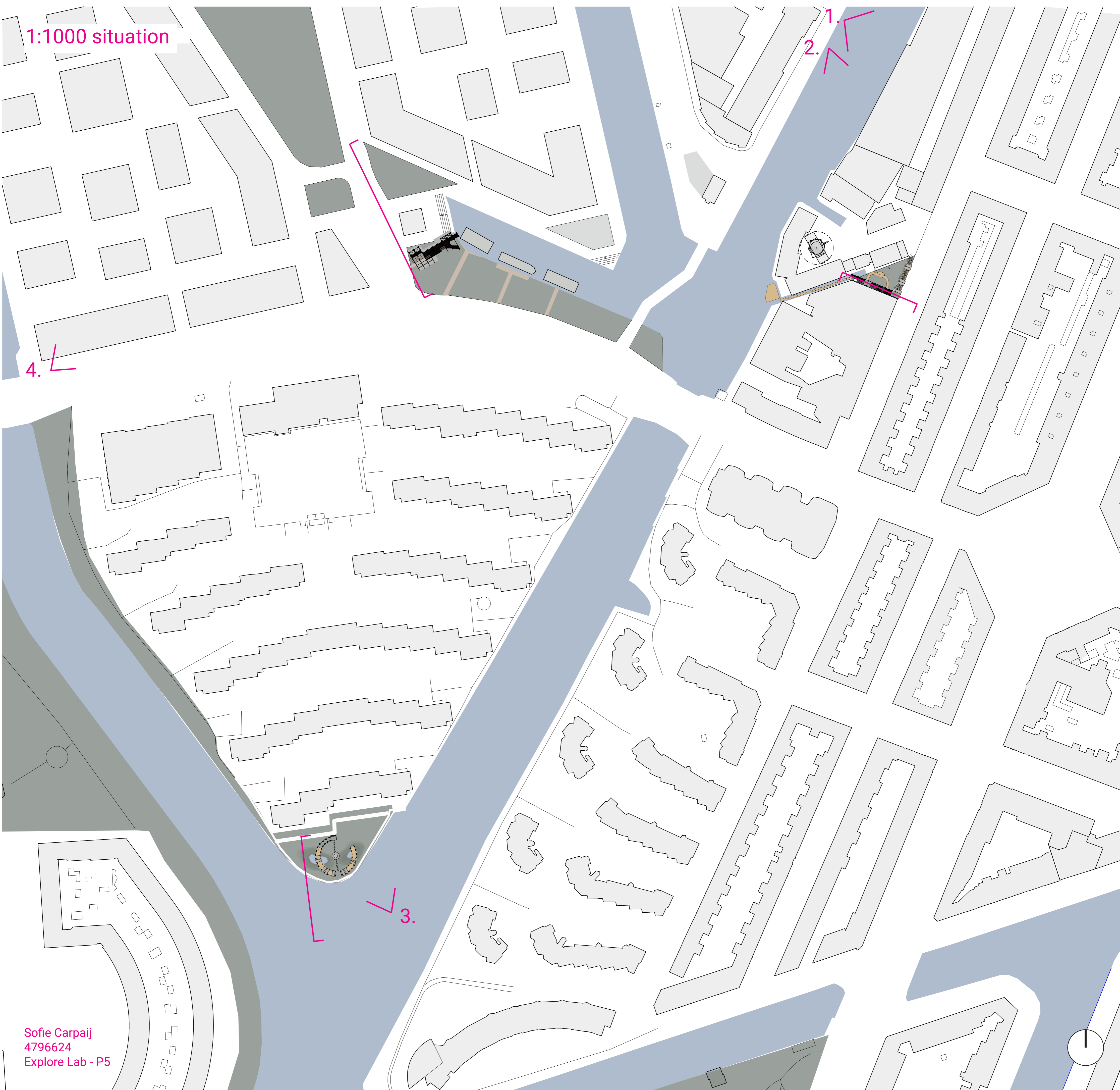
3. 1884



1900



1:1000 situation

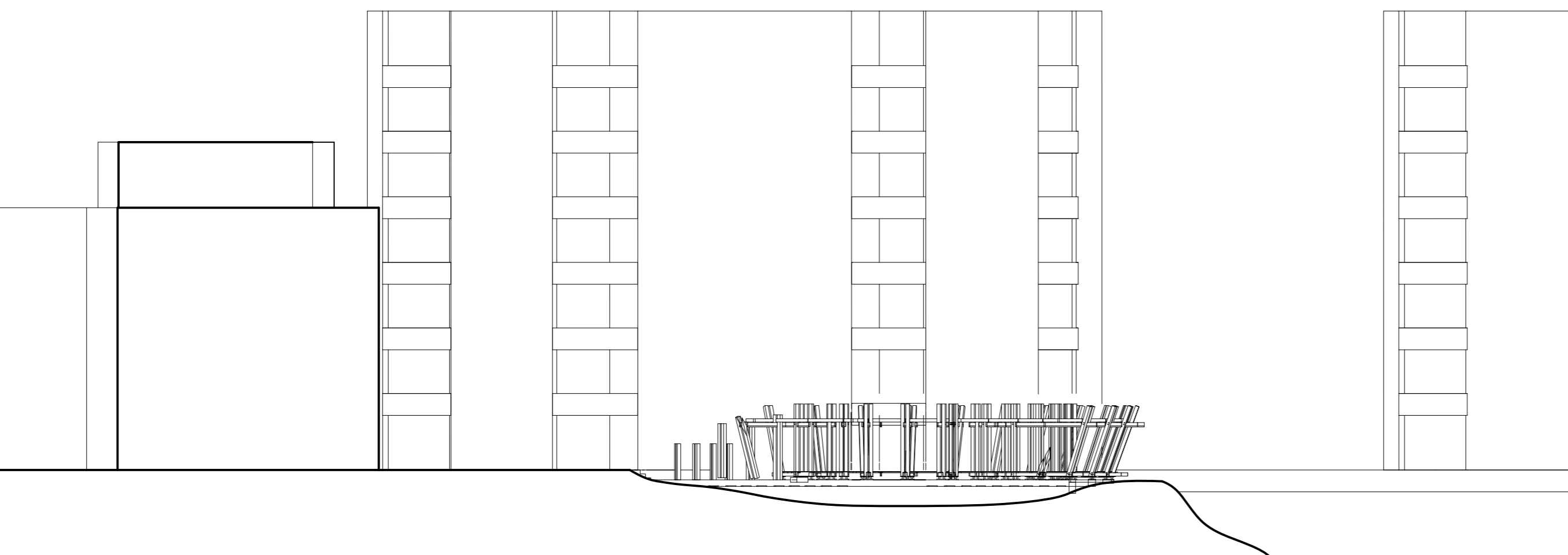




# KOP V JUT

- letting the water in -

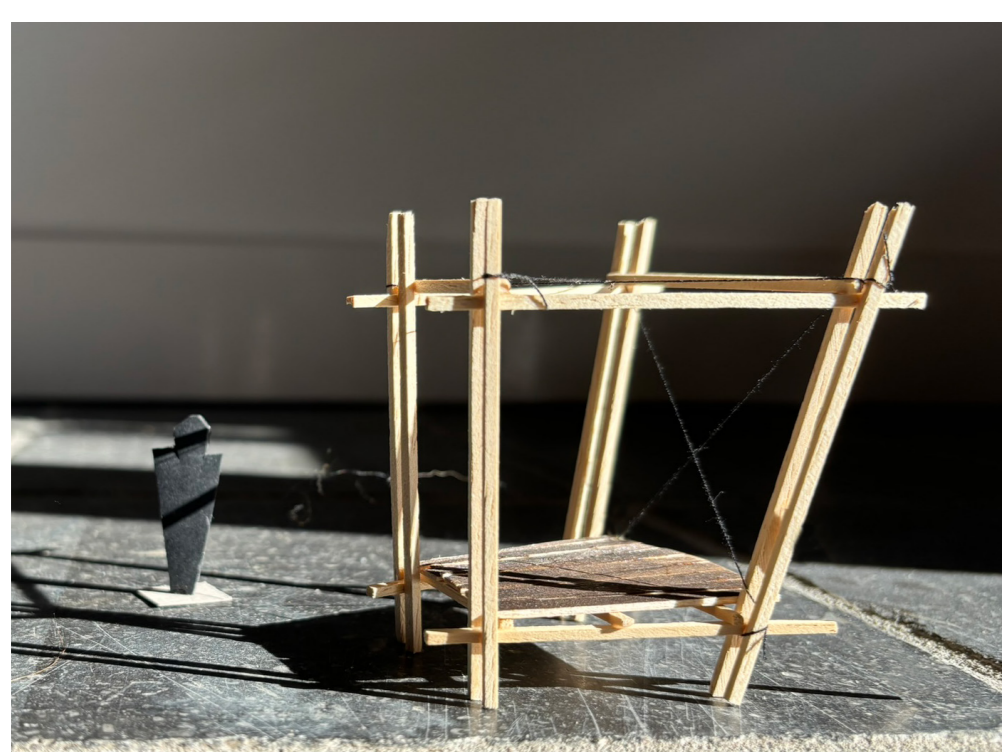
1:200 section



creating with the neighbourhood



construction element and human intervention



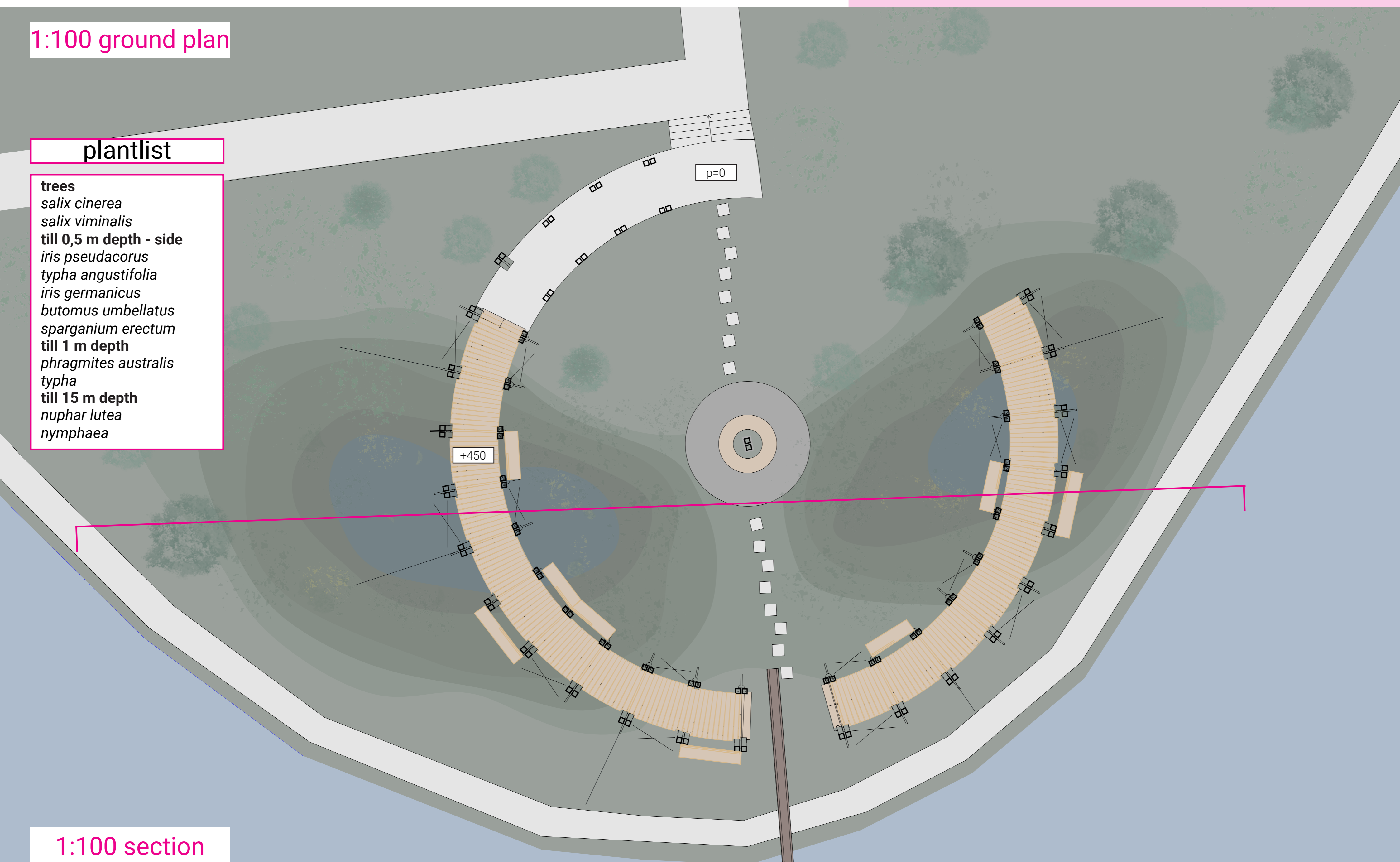
what remains



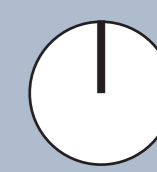
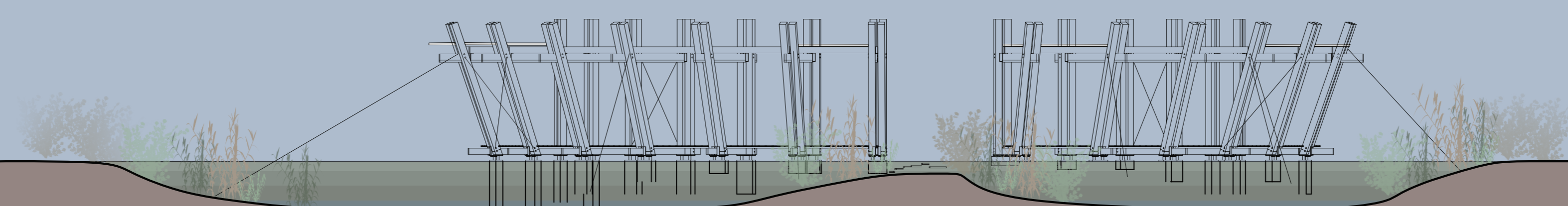
1:100 ground plan

plantlist

- trees**
- salix cinerea*
- salix viminalis*
- till 0,5 m depth - side**
- iris pseudacorus*
- typha angustifolia*
- iris germanicus*
- butomus umbellatus*
- sparganium erectum*
- till 1 m depth**
- phragmites australis*
- typha*
- till 15 m depth**
- nuphar lutea*
- nymphaea*



1:100 section

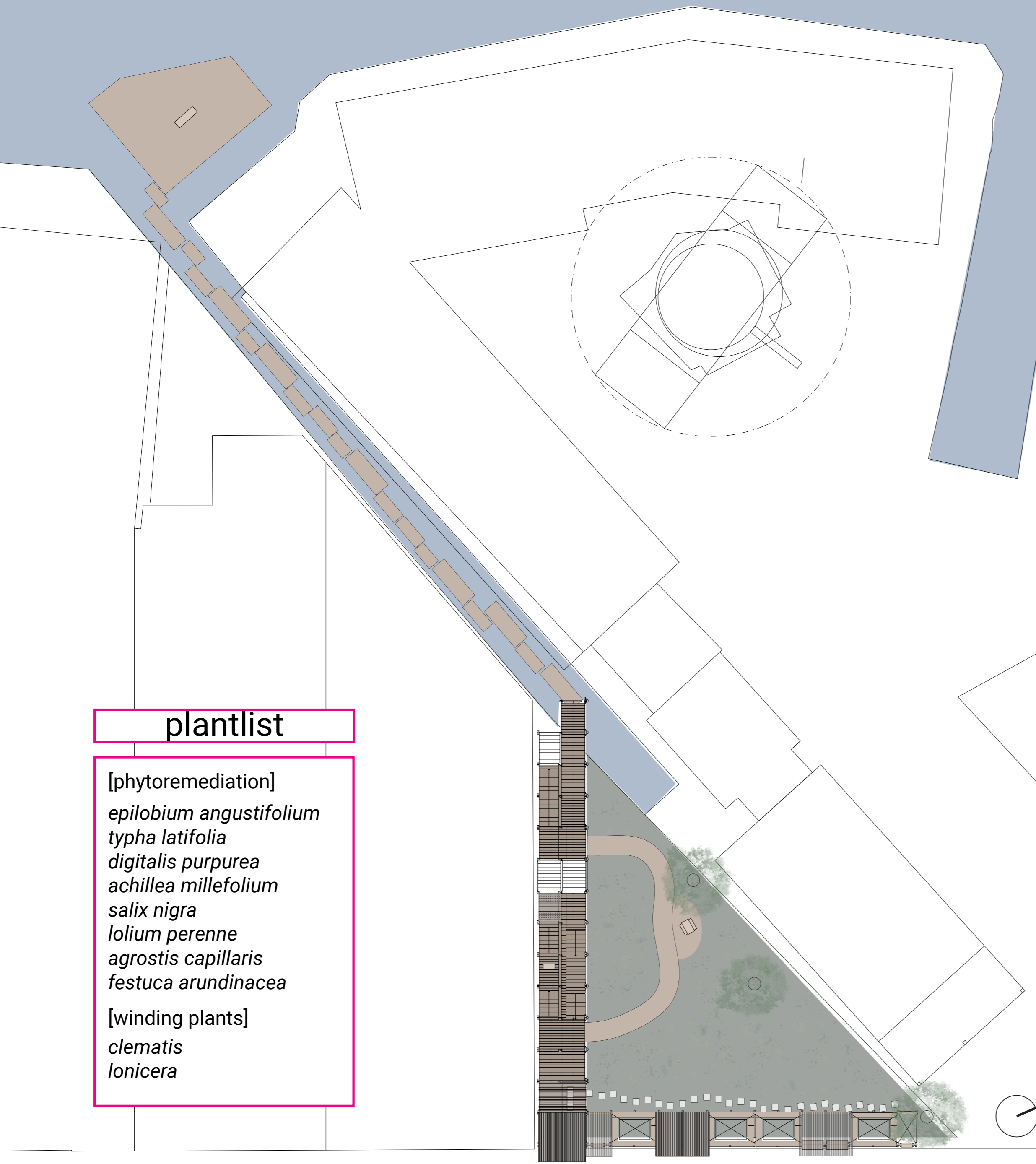




# DE OTTER

- finding your escape -

1:200 situation



going through the structure

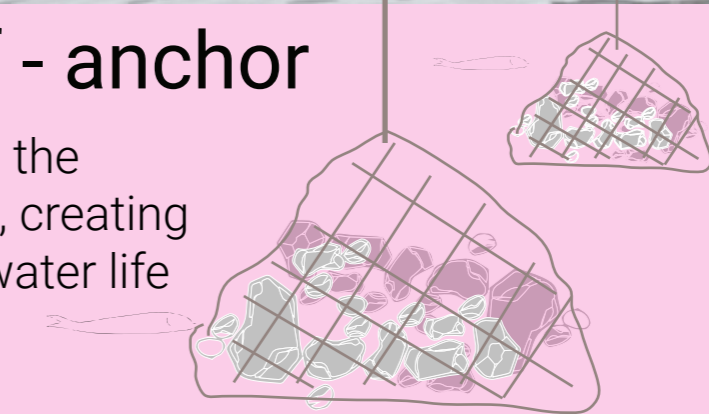


view from across

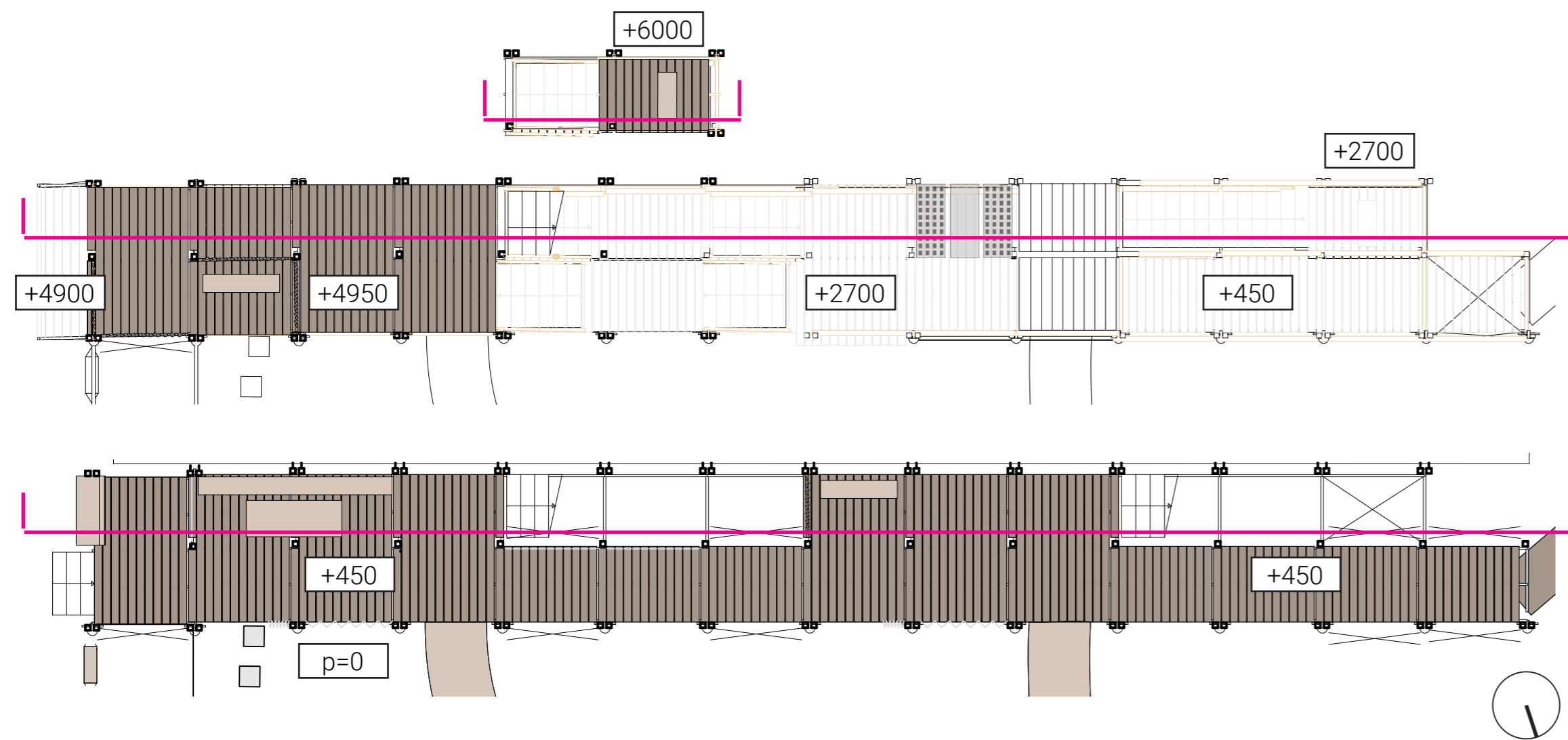


small reef - anchor

rocks to stabilize the floating platform, creating space for underwater life



1:100 ground plan



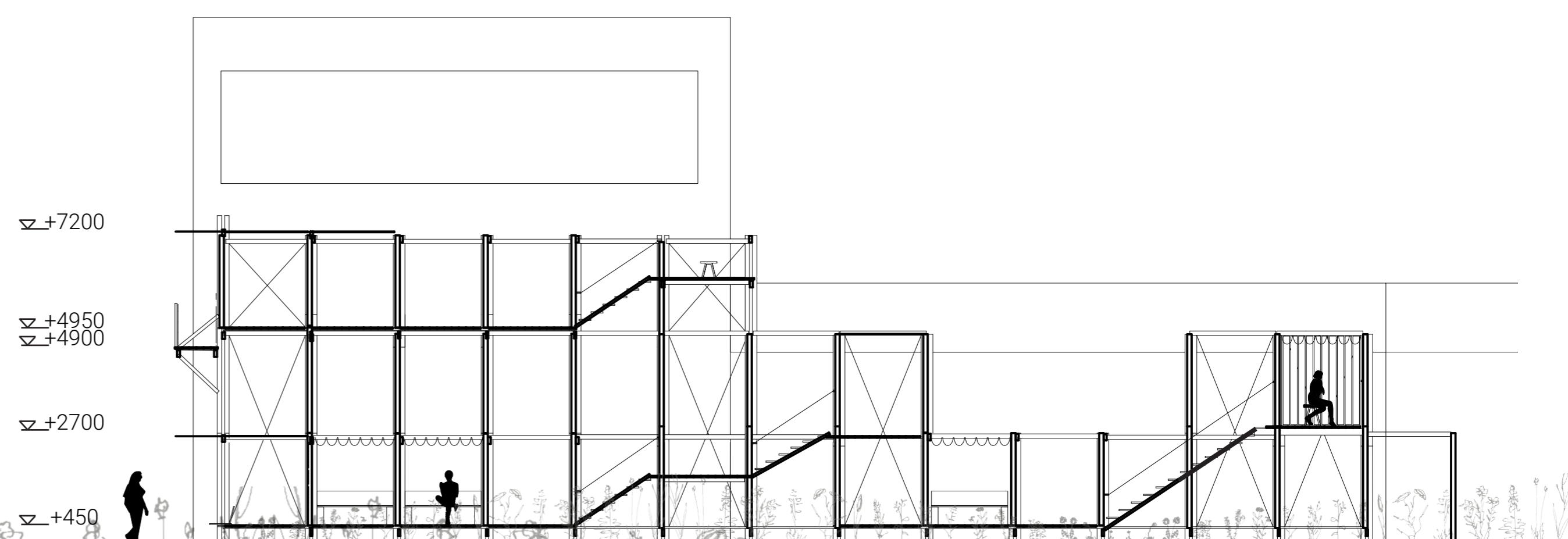
maintaining with the neighbourhood



detail and connection



1:100 section

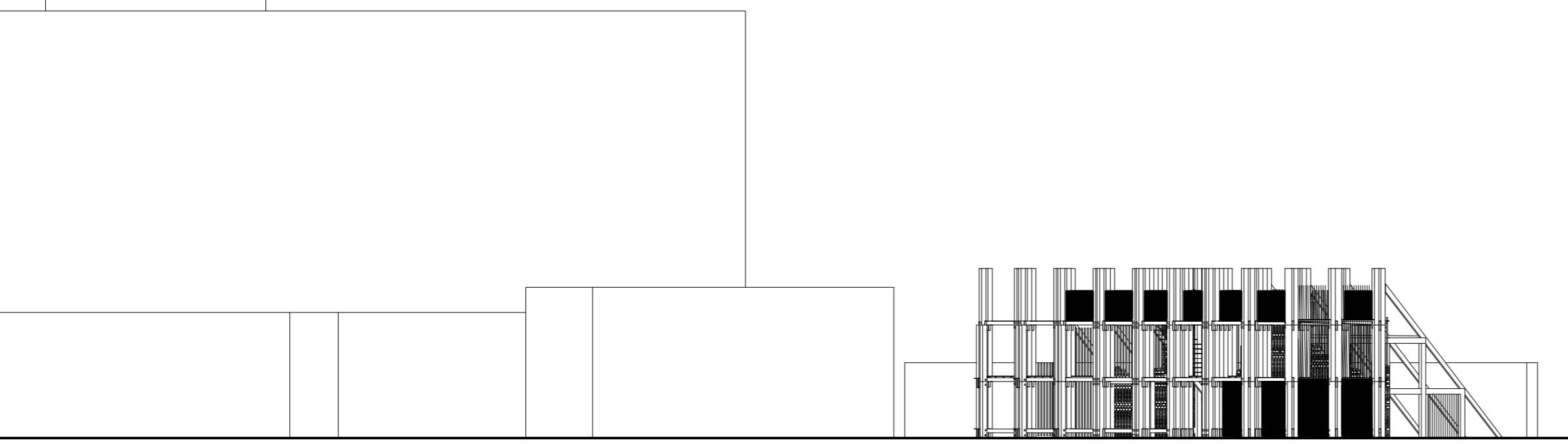




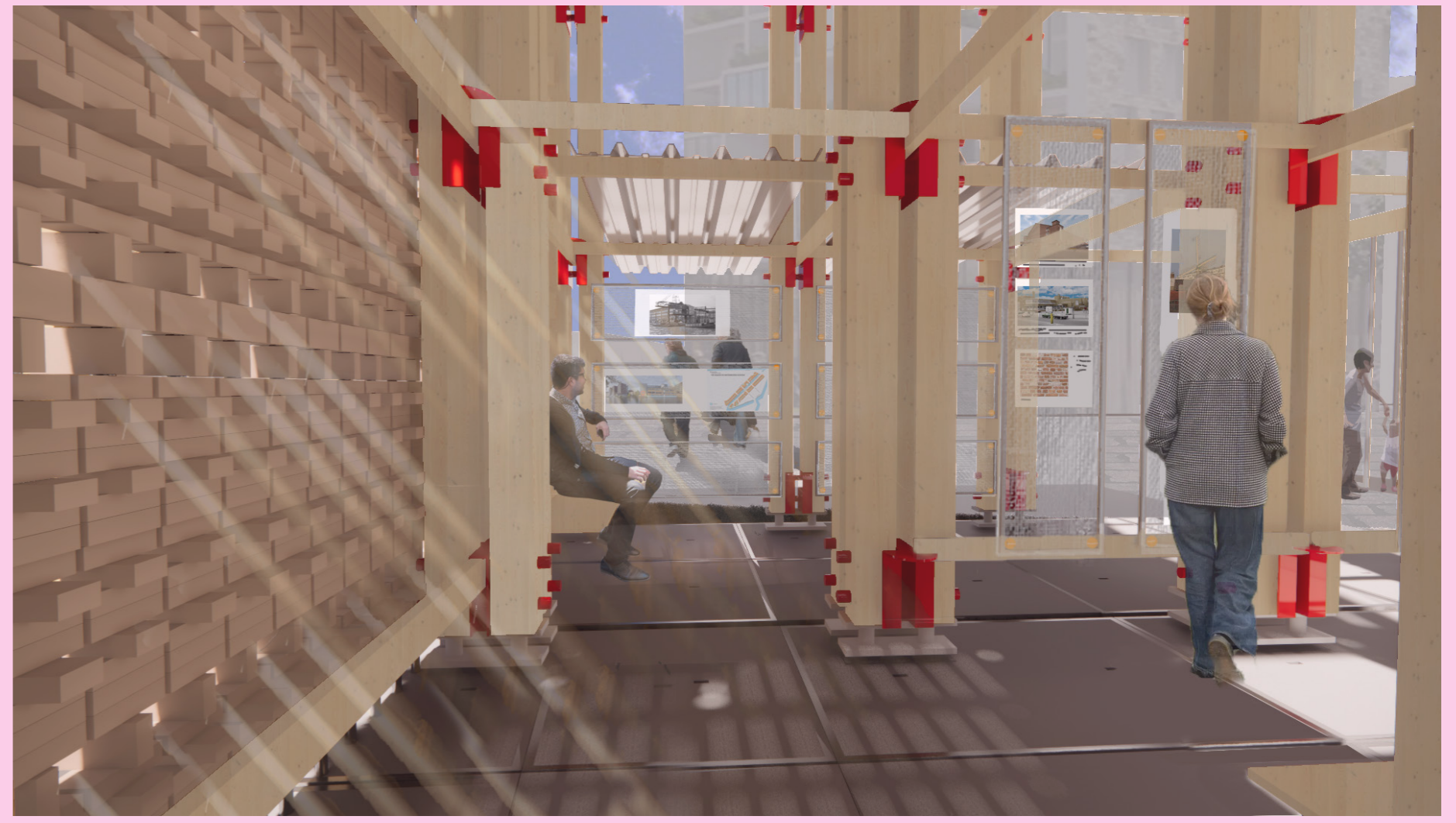
# MARCANTI

- in between work in progress and decay -

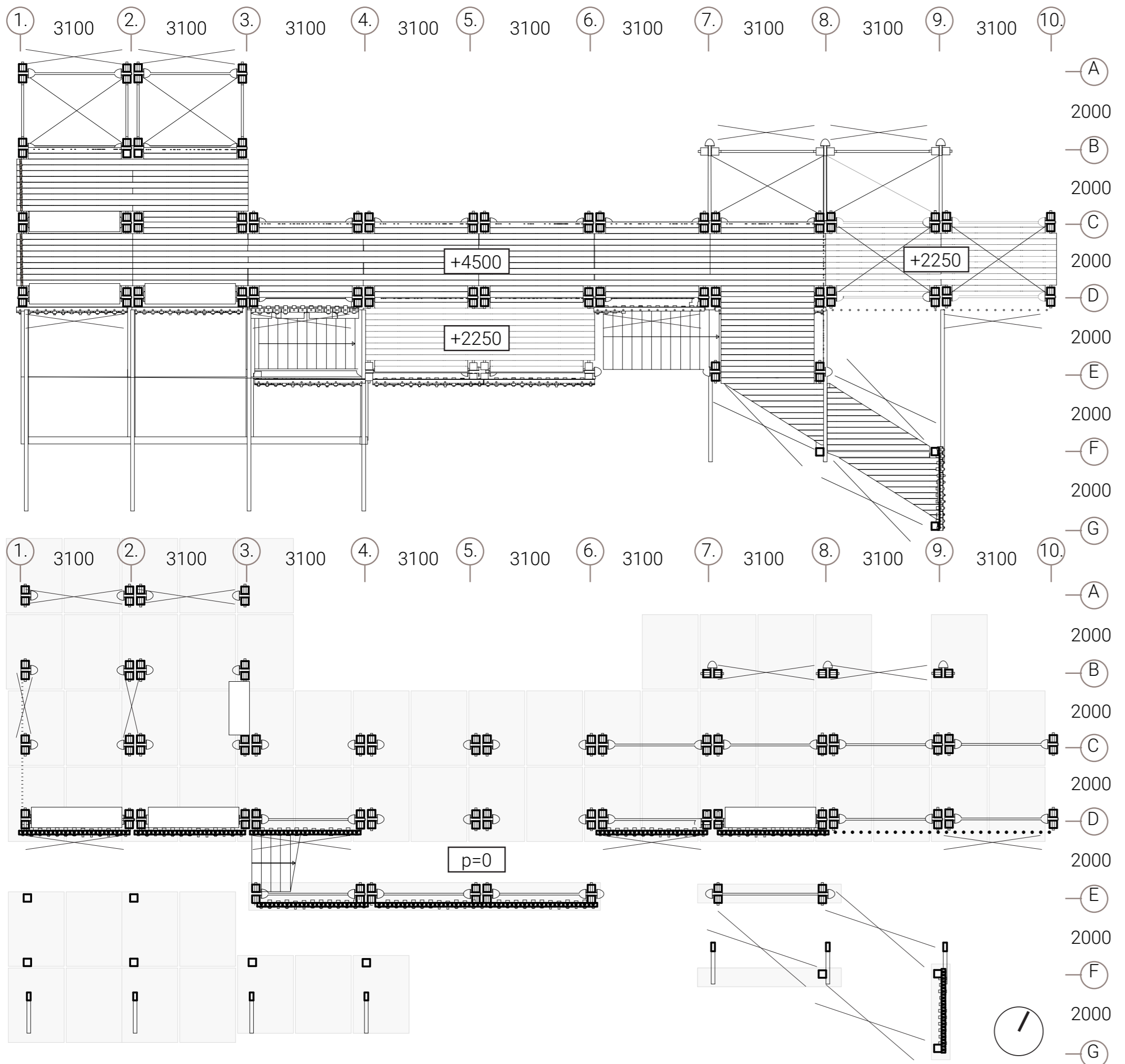
1:200 surroundings



flexible exhibition space



1:100 ground plan

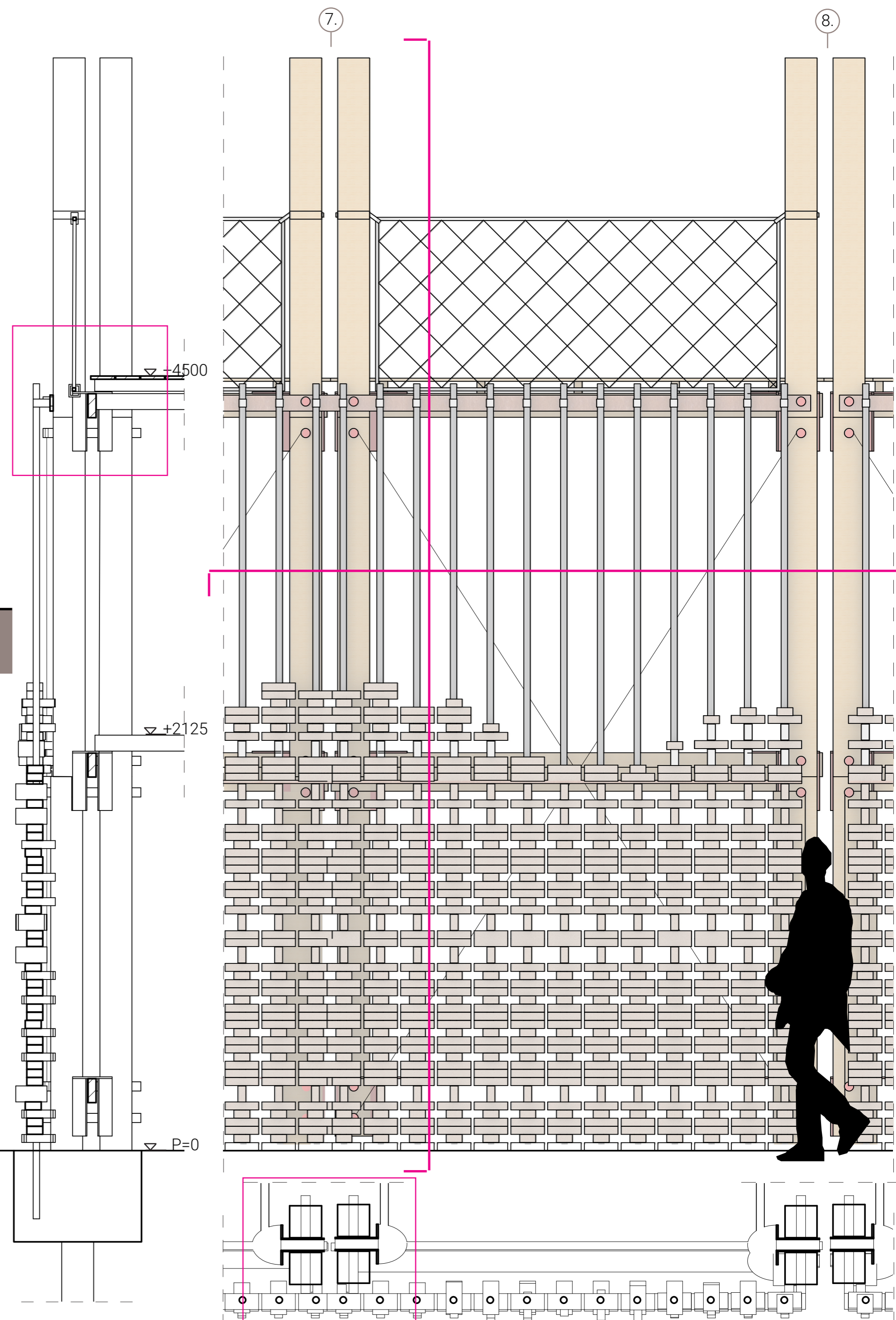
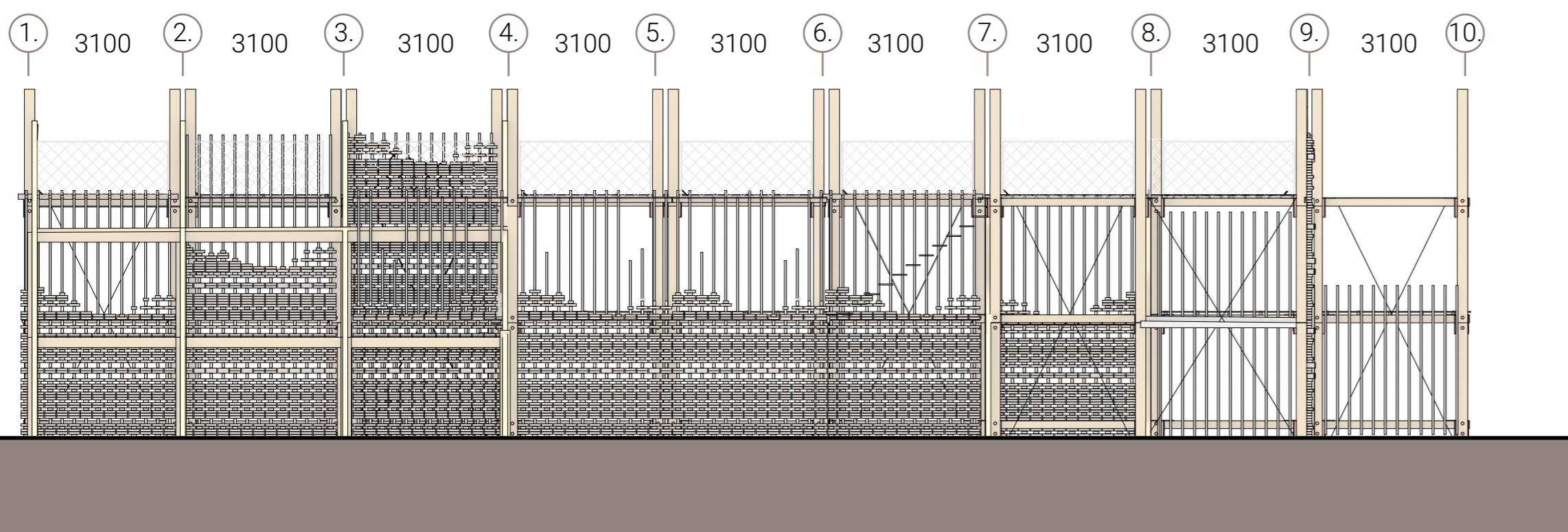


adding with the neighbourhood

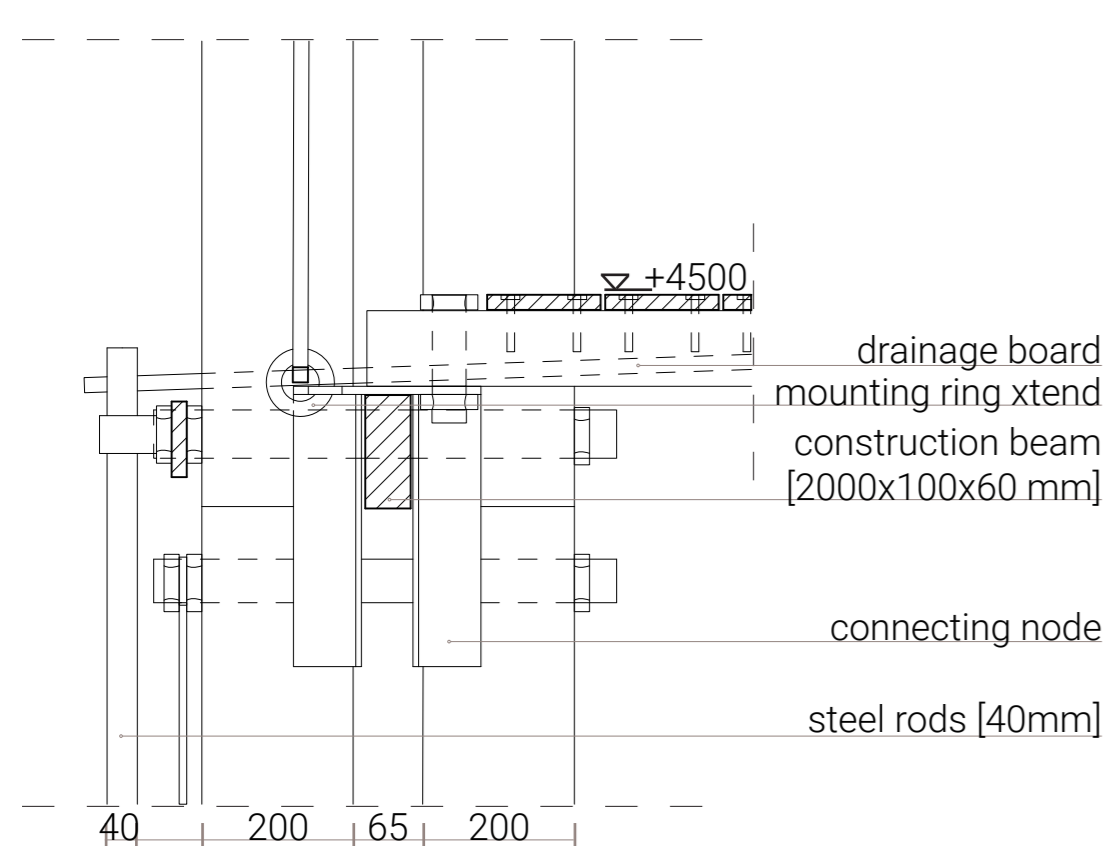


1:20 façade and section

1:100 south façade



1:5 detail, vertical scaled 0.5



1:5 detail, horizontal scaled 0.5

