

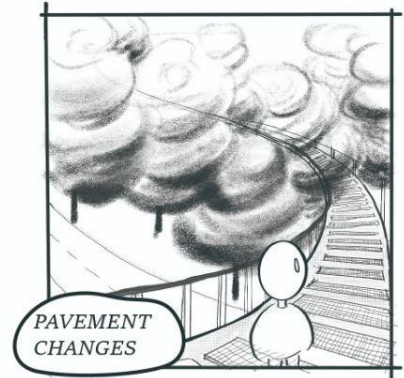
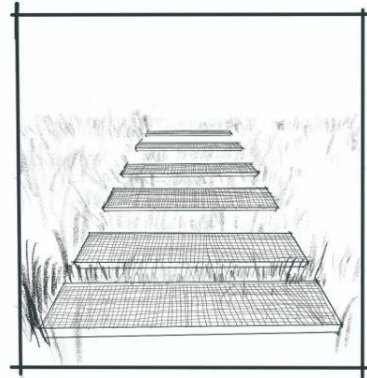
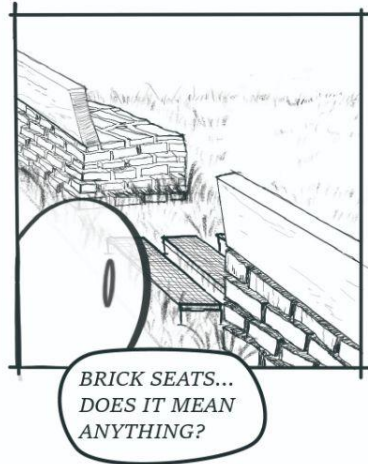
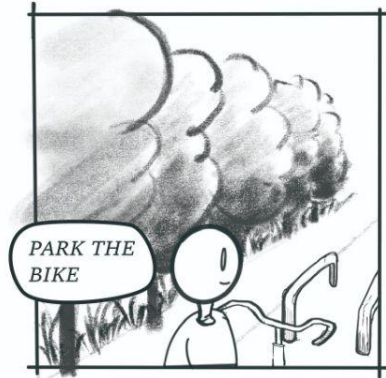
Integrated Mobility

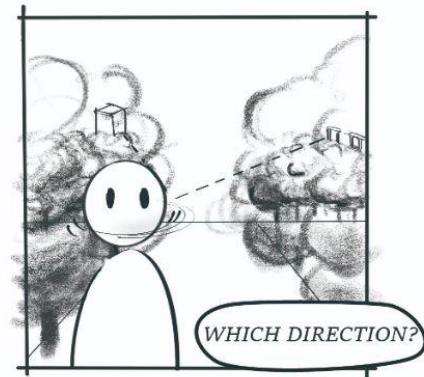
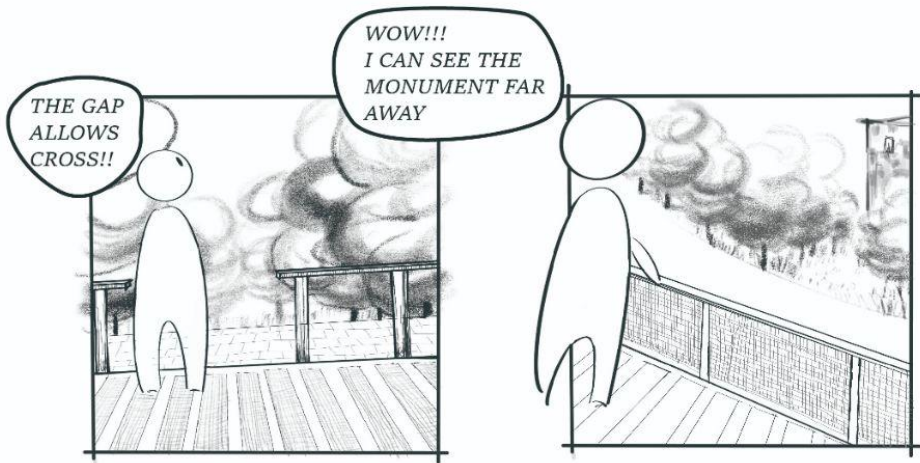
Improve the Accessibility to Military Heritage in Soesterberg

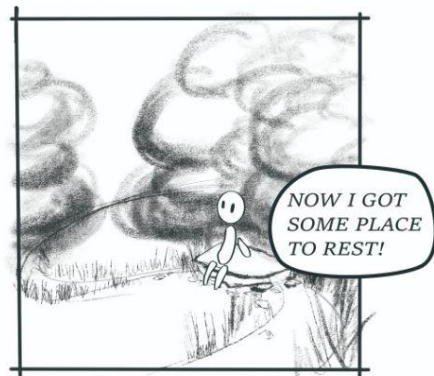
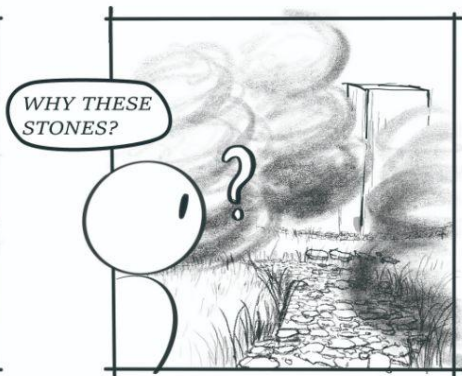
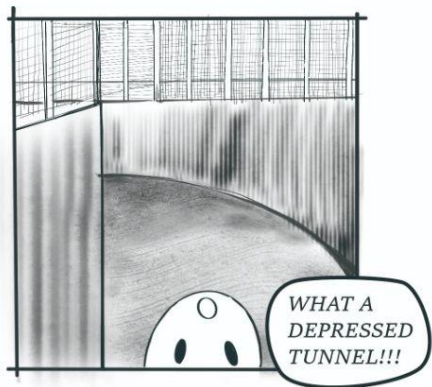


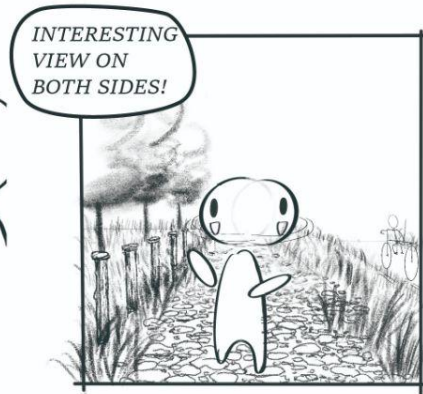
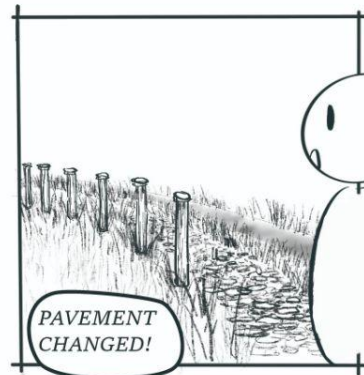
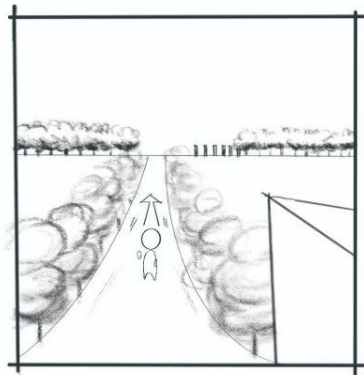
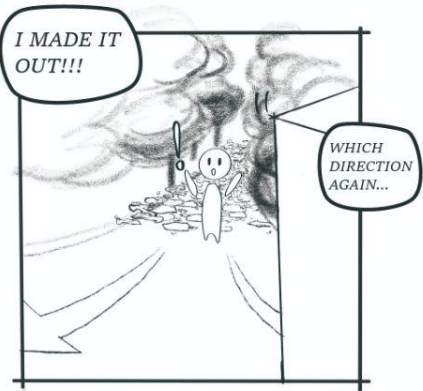
P5
Urban Fabric Lab
Flowscape Graduation Studio
Landscape Architecture Track

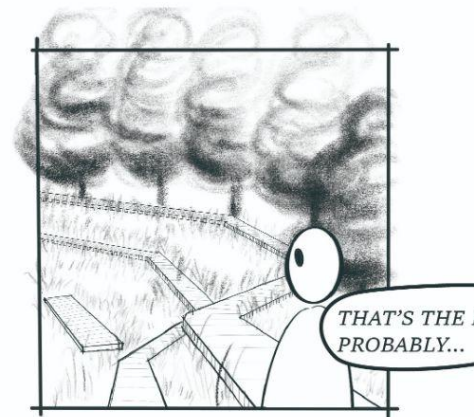
Yan Liang
2022.06.24











INTRODUCTION

Comics / Topics / Locations / Fieldwork

Military Heritage



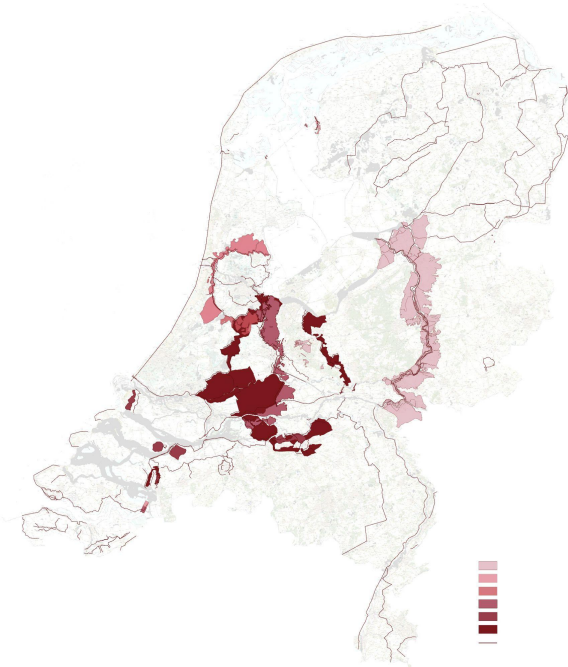
Forest Landscape



Urbanization



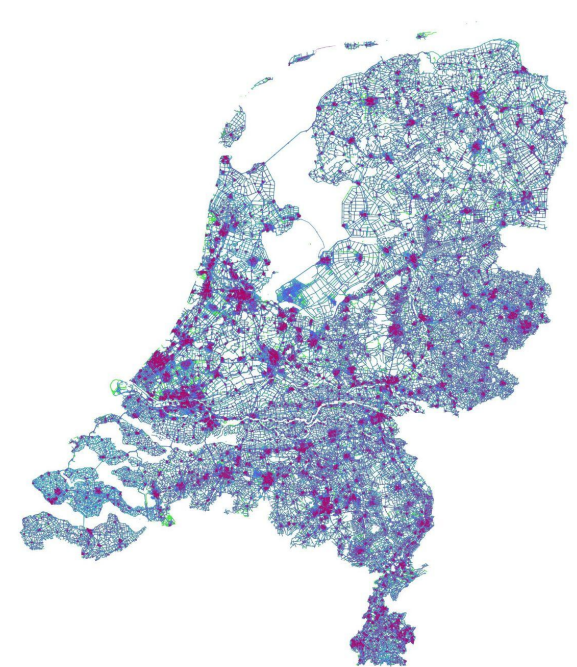
Military Heritage

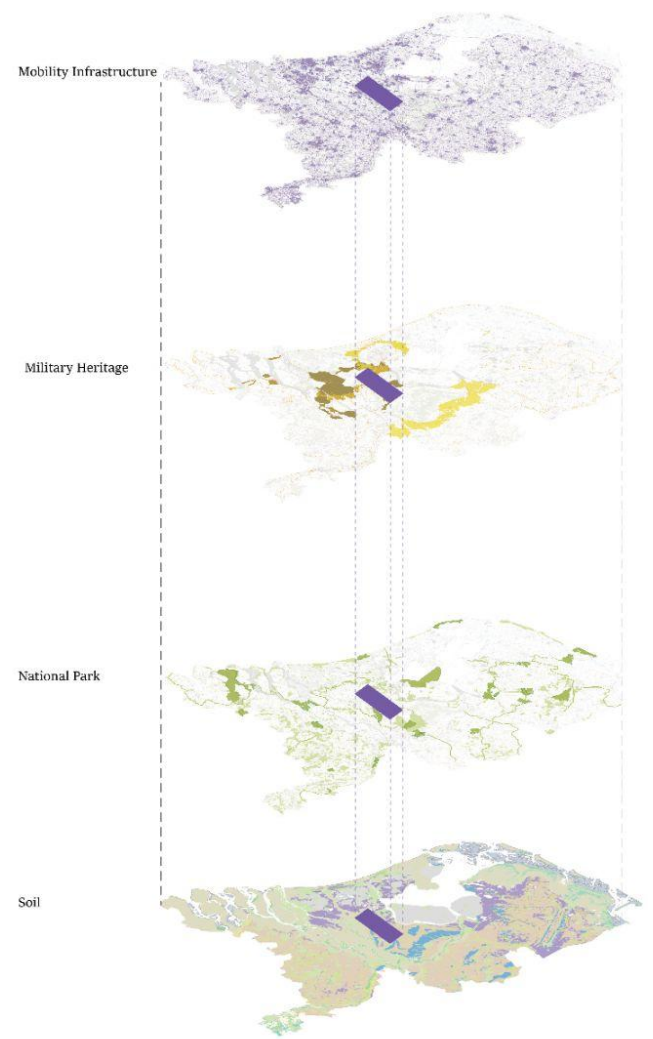
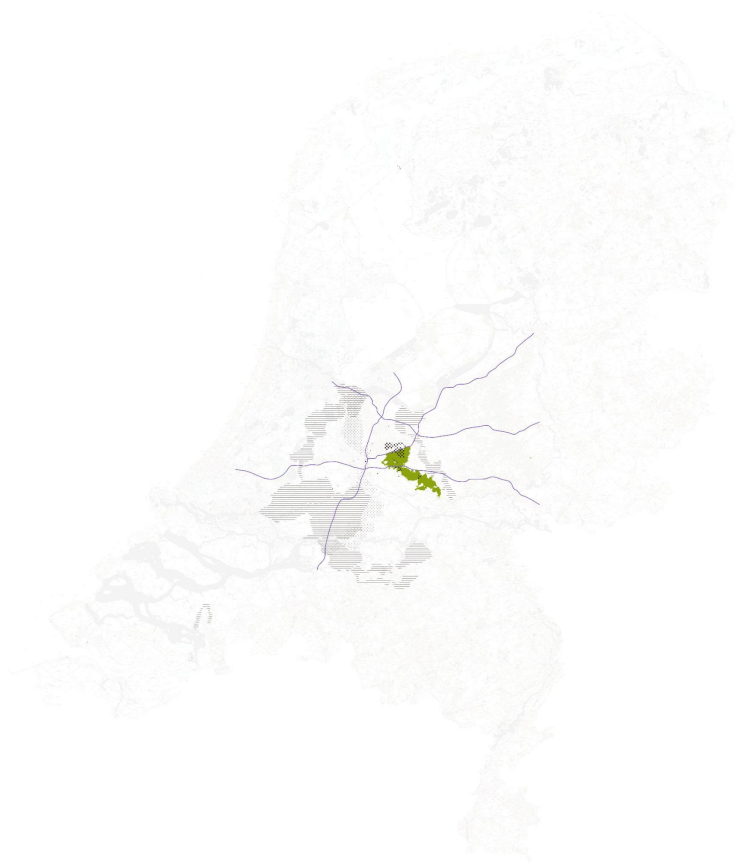


Green Structure

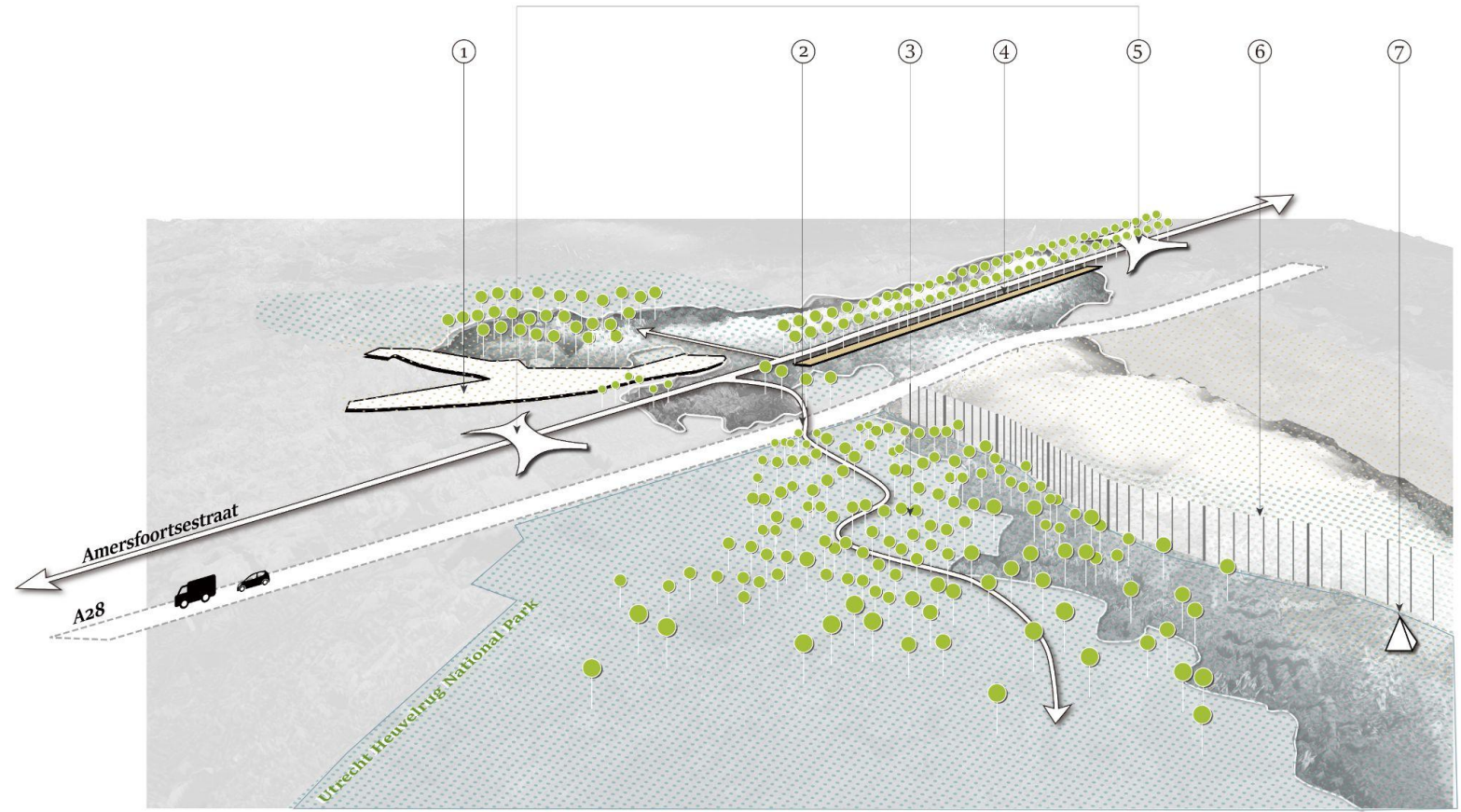


Mobility Network

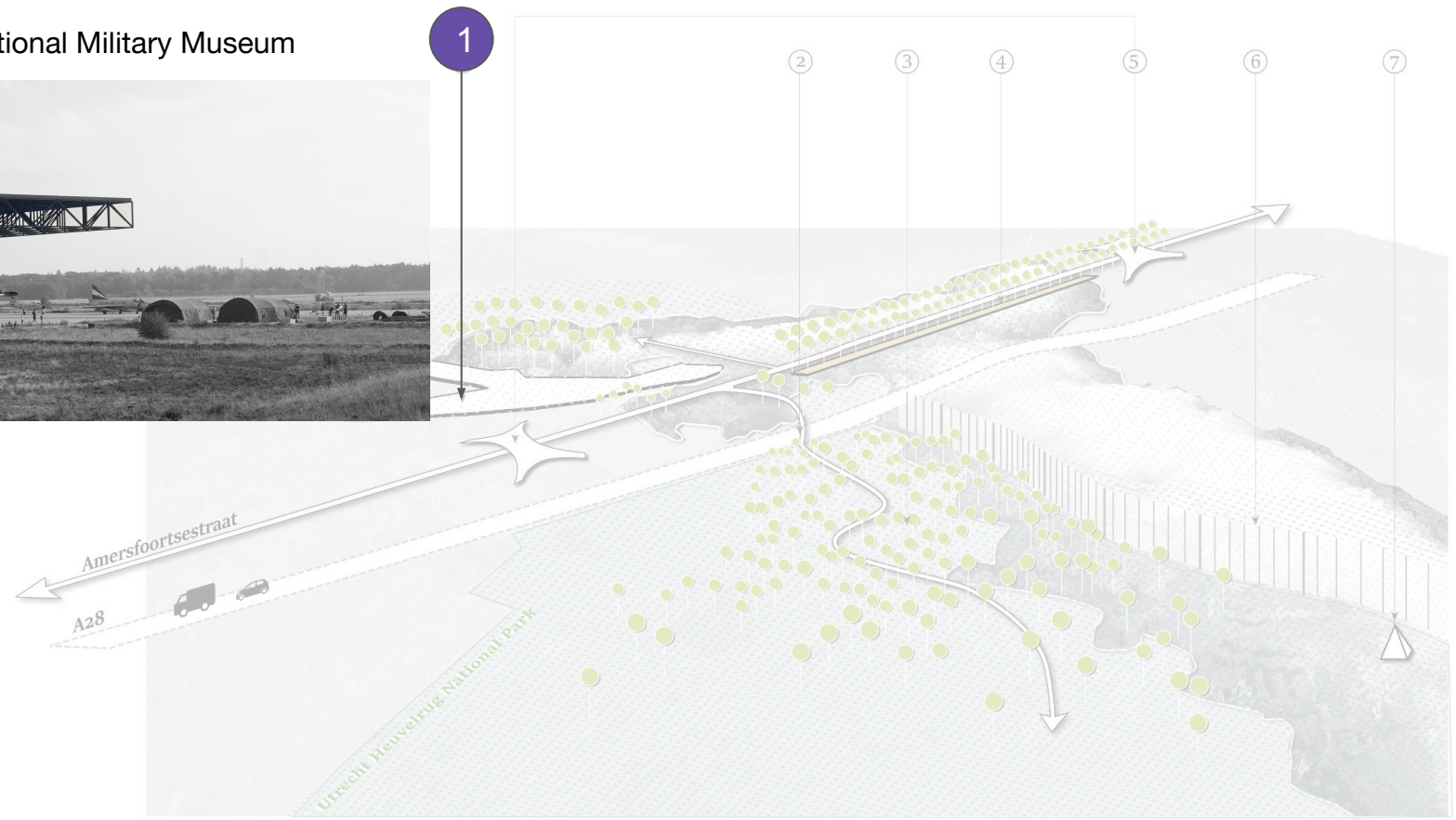




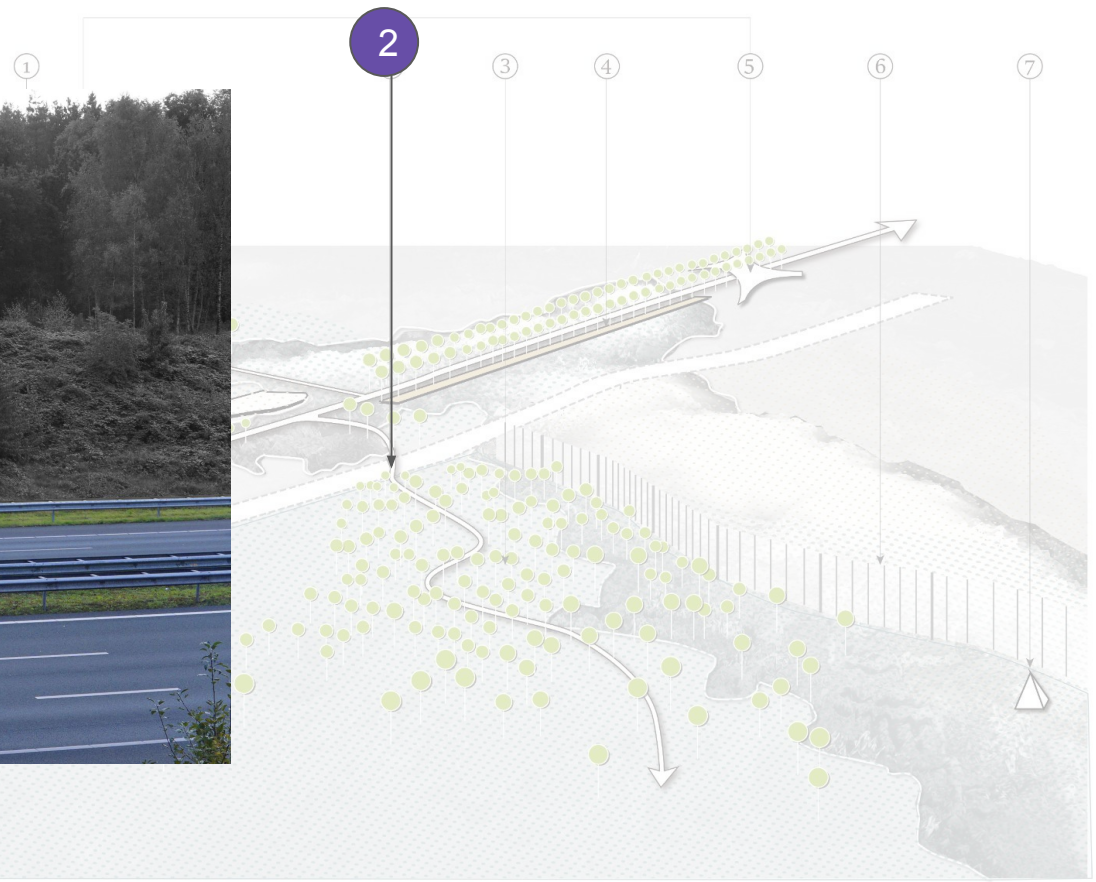




Soesterberg National Military Museum

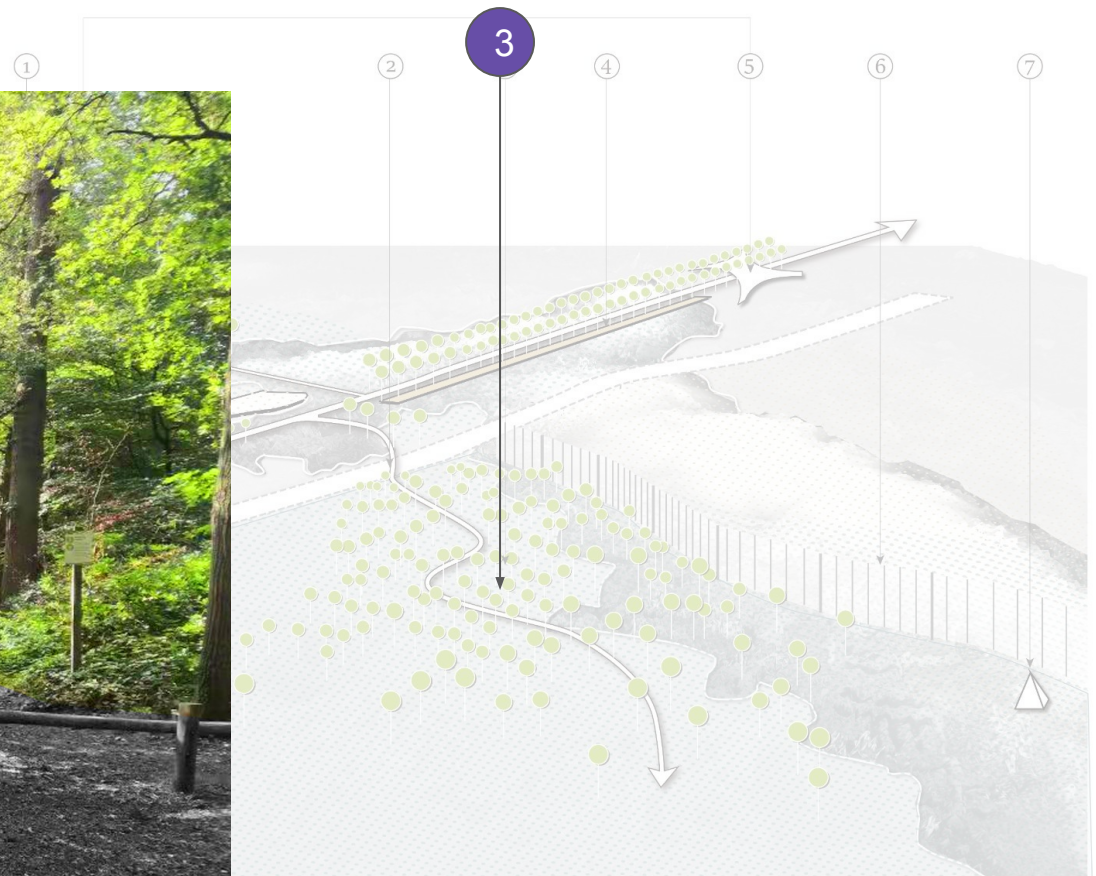


A28 Highway



Unrecht Henne

Utrecht Heuvelrug National Park

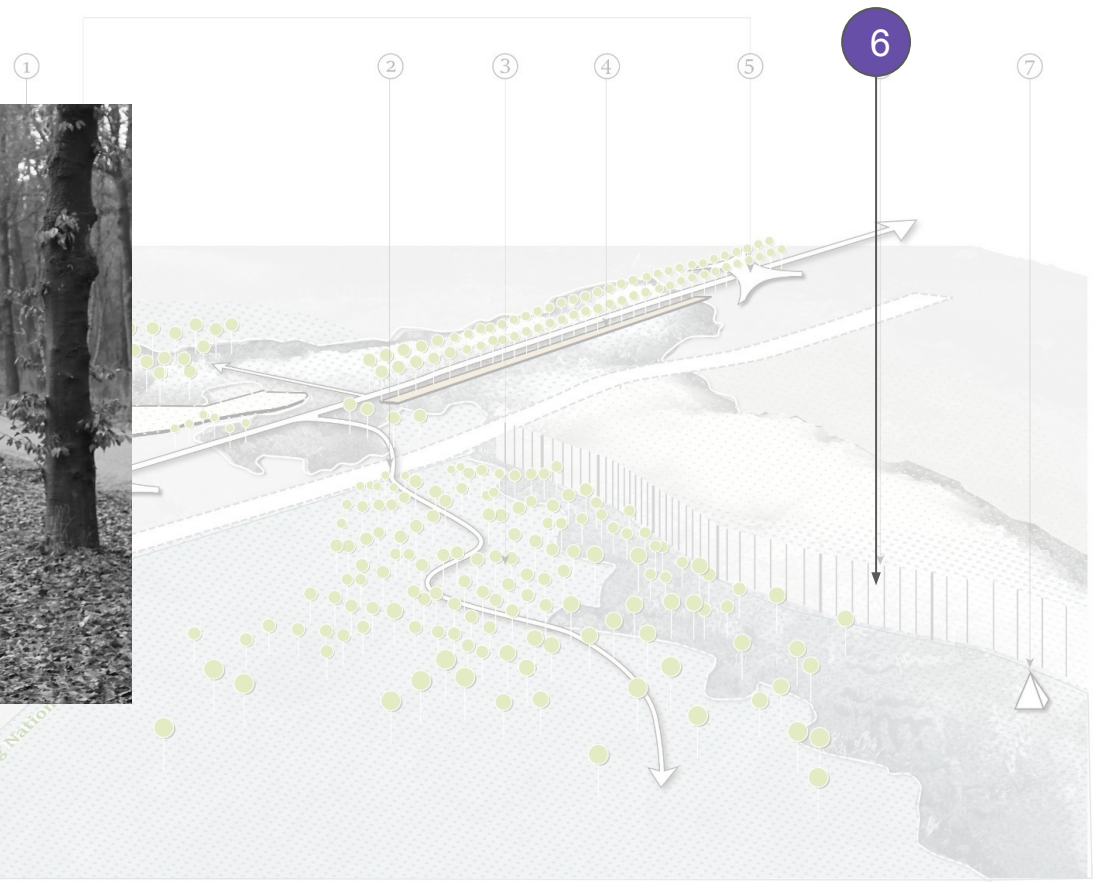


Amersfoortsestraat

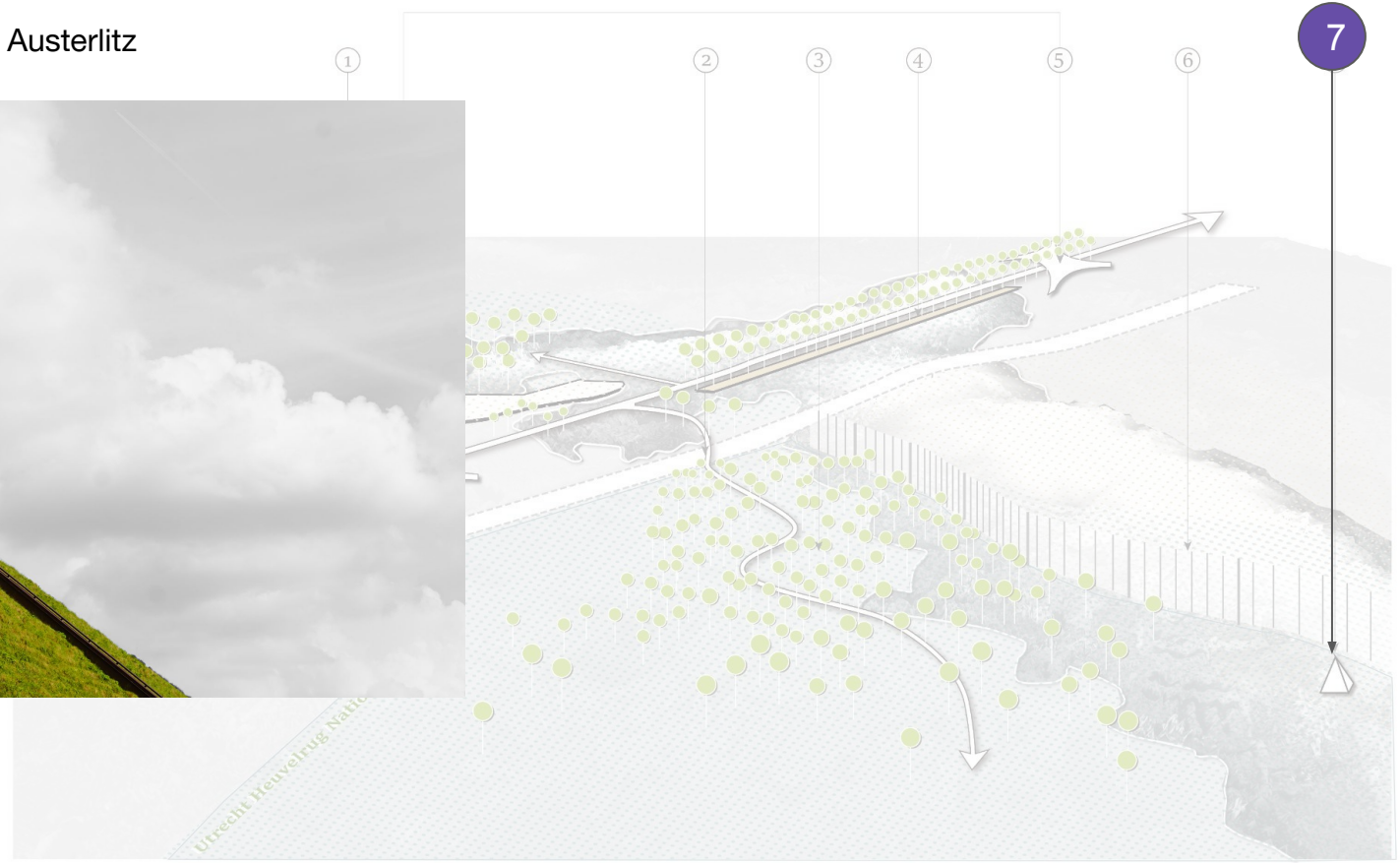


Unrecht Houtveldrug

Military training base boundaries



Pyramid of Austerlitz



PROBLEM FIELD

Fragmented heritage sites / Fragmented roads / Monocultural forest

PROBLEM STATEMENT

The current cultural experience between each **heritage sites** is disconnected and the physical **access** logic behind the cultural heritage sites are omitted in the **singular forest environment**.

PROBLEM STATEMENT

fragmented heritage sites

fragmented road system

The current cultural experience between each heritage sites is disconnected and the physical access logic behind the cultural heritage sites are omitted in the singular forest environment.

monocultural forest

Fragmented heritage sites

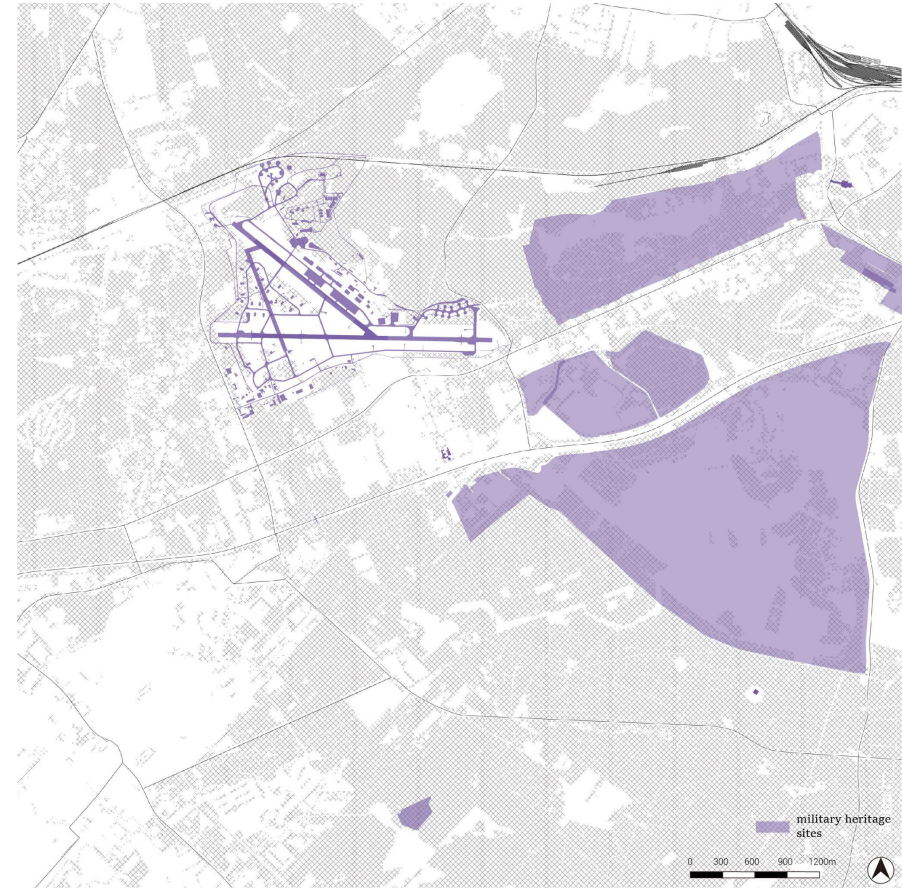
large domain



medium domain



small domain



Fragmented heritage sites | **Fragmented roadsystem**

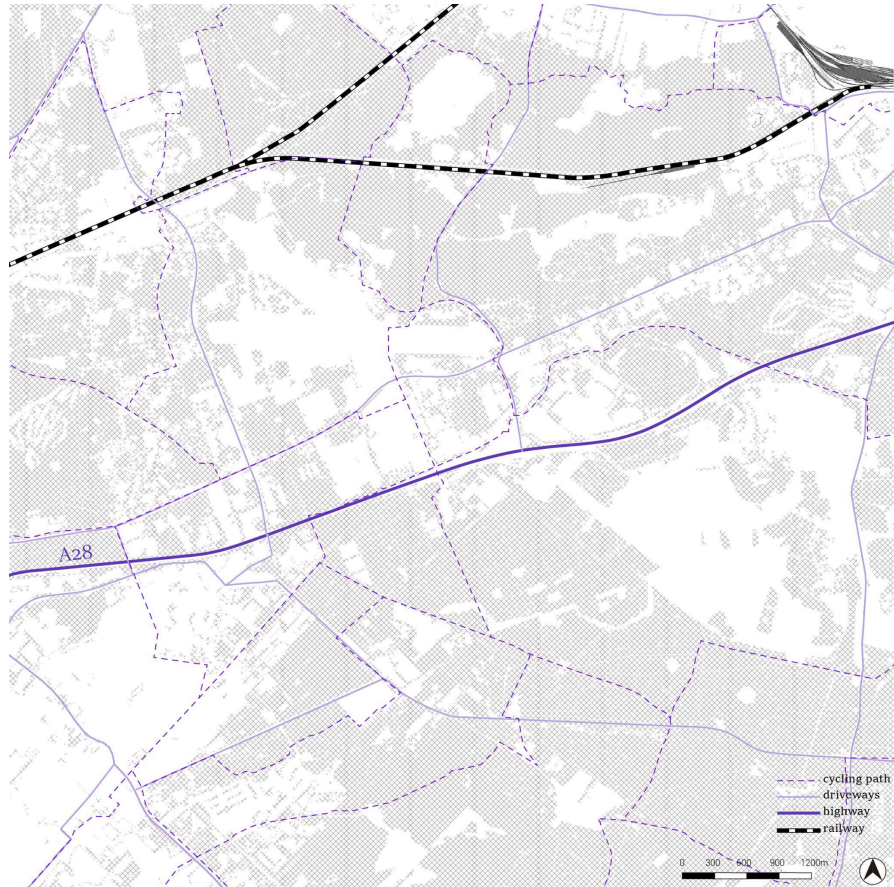
car lanes



cycling path

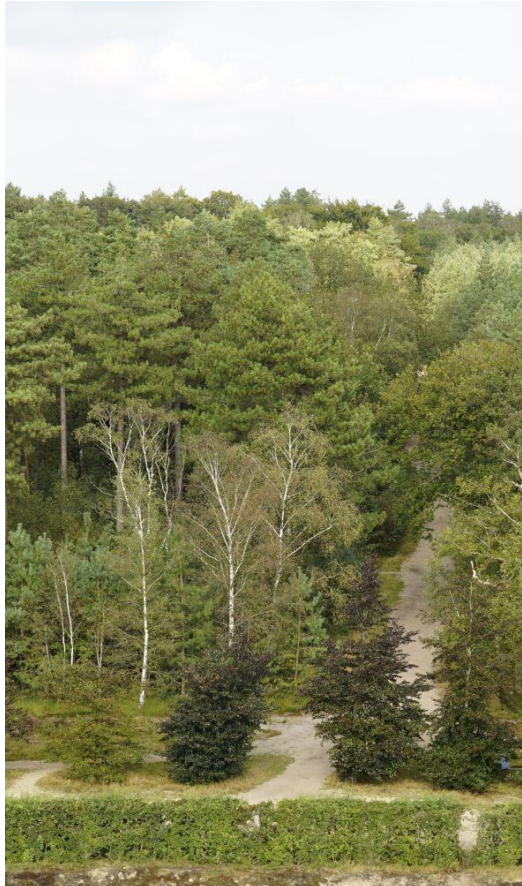


foot path



Fragmented heritage sites | Fragmented roadsystem | **Monocultural forest**

spruce&pine forest



RESEARCH QUESTION

The current **cultural experience** between each heritage sites is disconnected and the physical **access logic** behind the cultural heritage sites are omitted in the **singular forest** environment.



How to improve the **accessibility, understandability and presentation of the military heritage in a **forest environment**?**

How to improve the

accessibility, understandability

and presentation

of the military heritage in a

forest environment?

What is the definition of heritage accessibility?

How to **increase the accessibility** in different mobility systems?

Spatial accessibility

Degree of difficulty (time, distance, transportation type...)

Diversities of options for people to choose

Intellectual accessibility

Feelings and visions when approaching (knowledge, awareness, experience, intuition...)

How to improve the

accessibility, **understandability**

and presentation

of the military heritage in a

forest environment?

How can people understand the story behind by **perceiving and involving** in the landscape?

Identity of heritage

Memory of a place: Symbols, spiritual significance, cultural representatives, time and periods...

How to improve the
accessibility, understandability
and **presentation**
of the military heritage in a
forest environment?

What are the **principles** of presenting a heritage landscape?

Interpretation of heritage

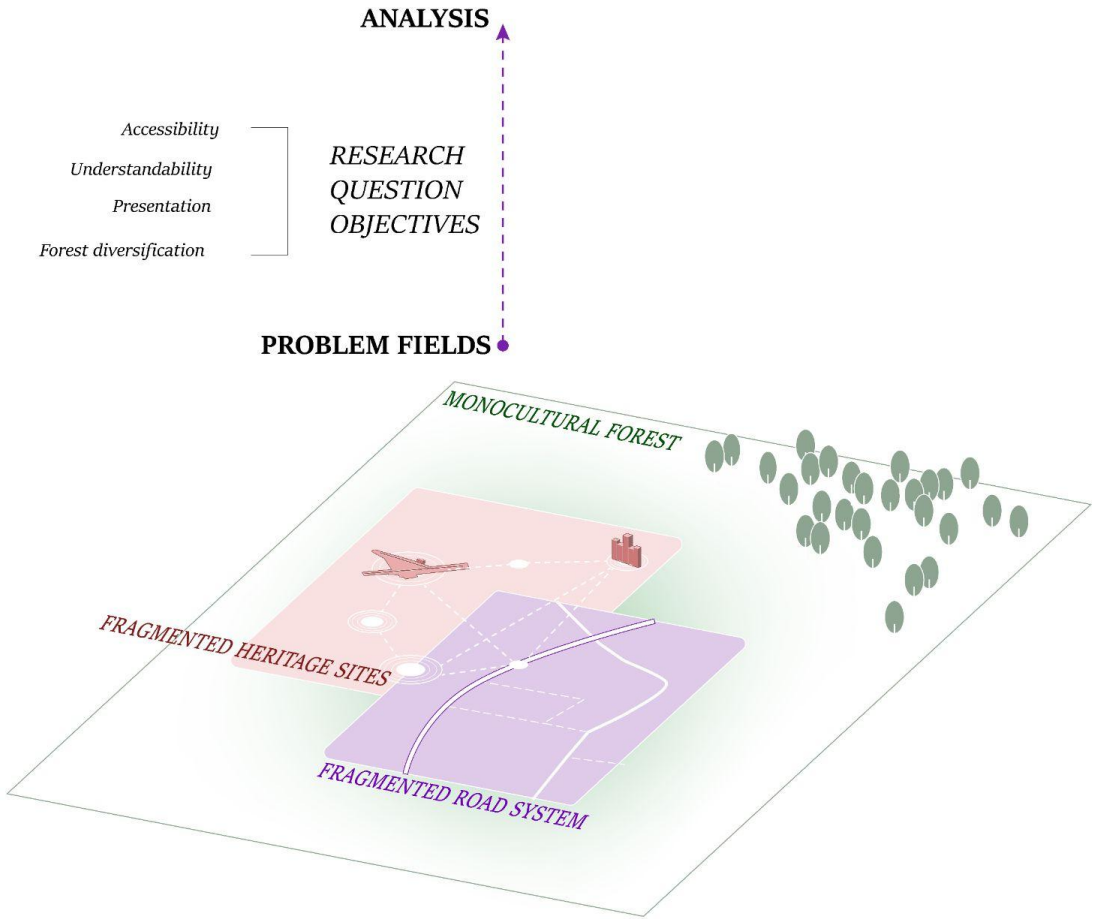
Harmoniously inserted interventions represent heritage identities and add value to the cultural significance.

How to improve the
accessibility, understandability
and presentation
of the military heritage in a
forest environment?

What is the natural approach to **diversify** the monoculture forest?

Forest diversity (in this project)

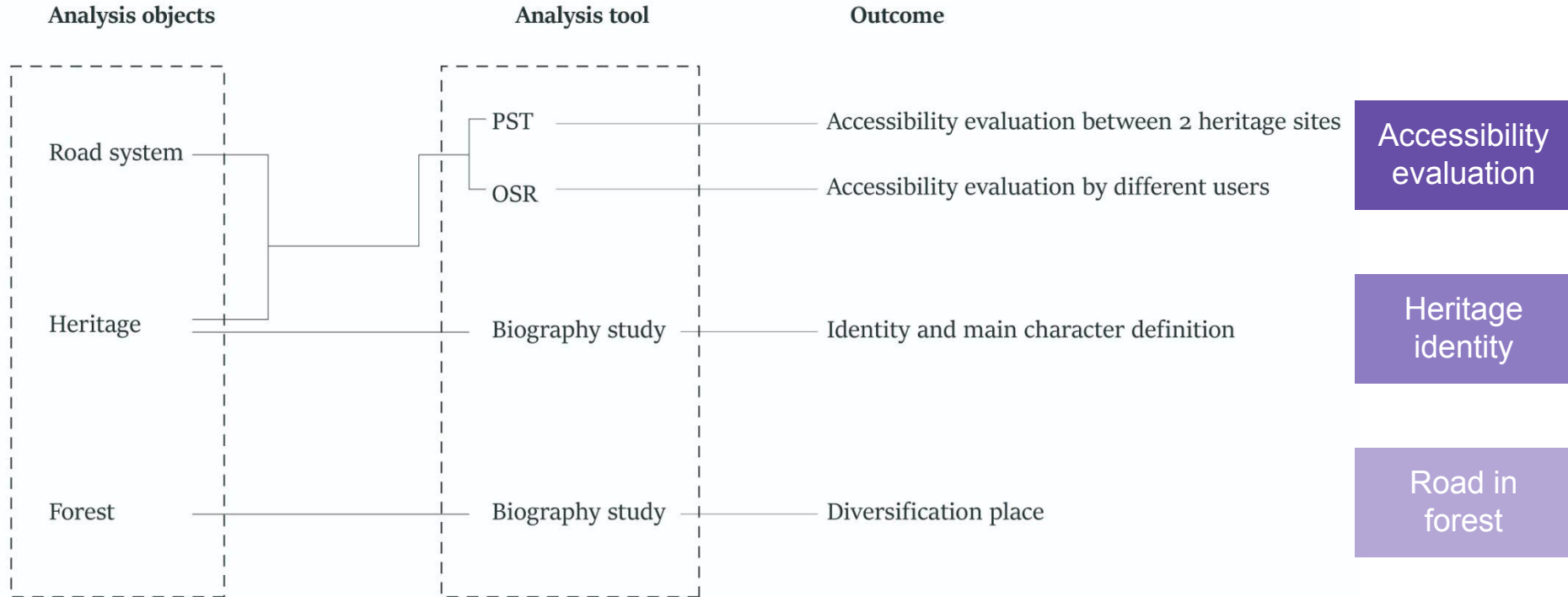
From monocultural to defensive, diversified forest



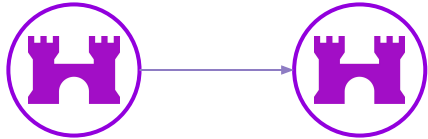
ANALYSIS

Accessibility / Heritage identity / Forest diversification

ANALYTICAL FRAMEWORK



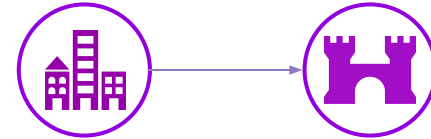
1. *Between heritage sites*



PST: Attraction betweenness

Which roads are the most likely to be taken between specific sites and locations?

2. *Socio-Accessibility*



OSR

Which roads are the FASTEST/SHORTEST way to take between two locations under specific mobility mode?

Accessibility | Heritage Identity | Forest

1. *between heritage sites* 

Cold war



World War II



French Times



World War I



Accessibility | Heritage Identity | Forest

1. *between heritage sites*



Accessibility | Heritage Identity | Forest

1.between heritage sites

High accessibility



Medium accessibility



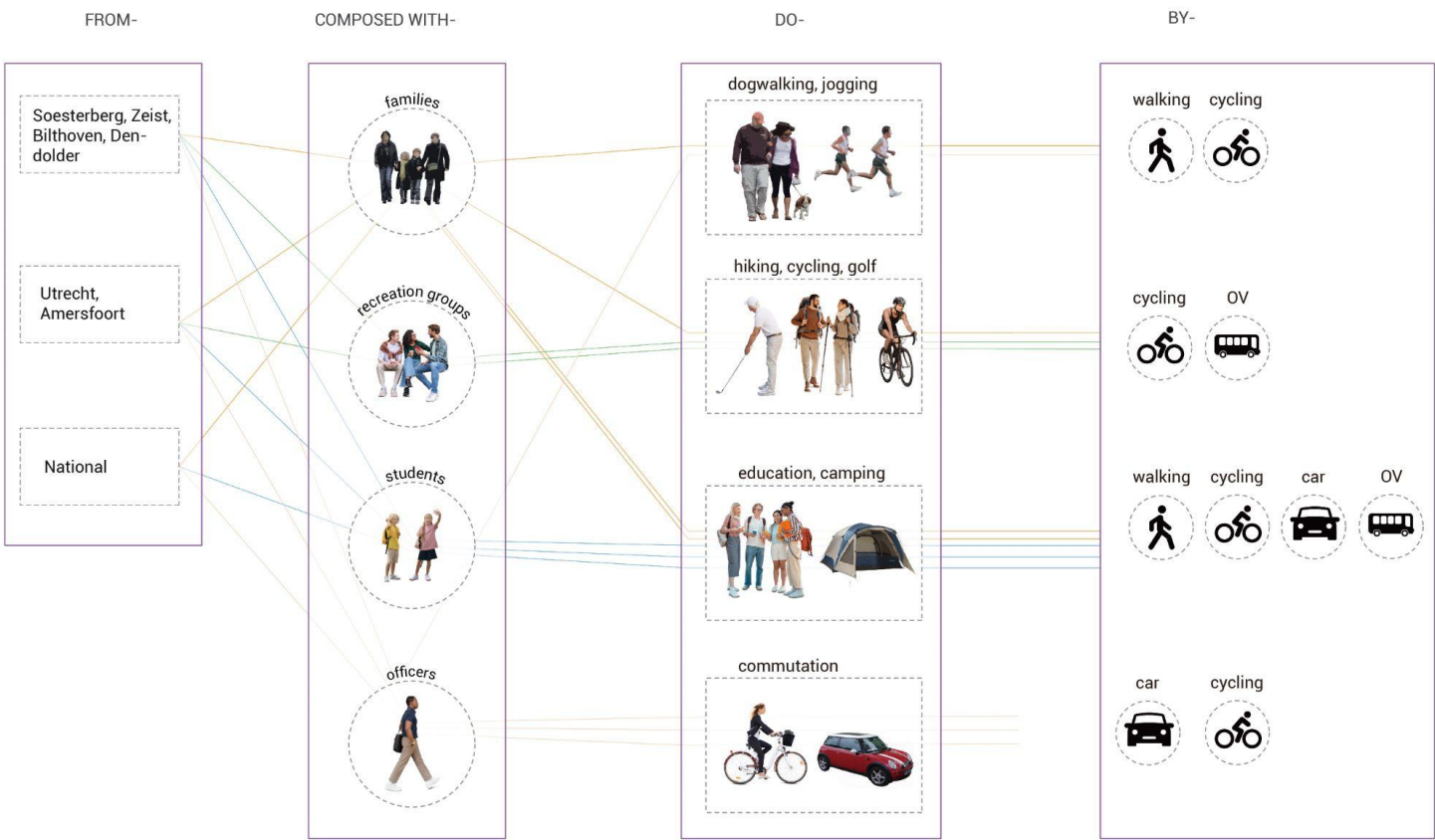
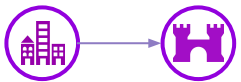
Low accessibility



Accessibility

| Heritage Identity | Forest

2. socio-accessible



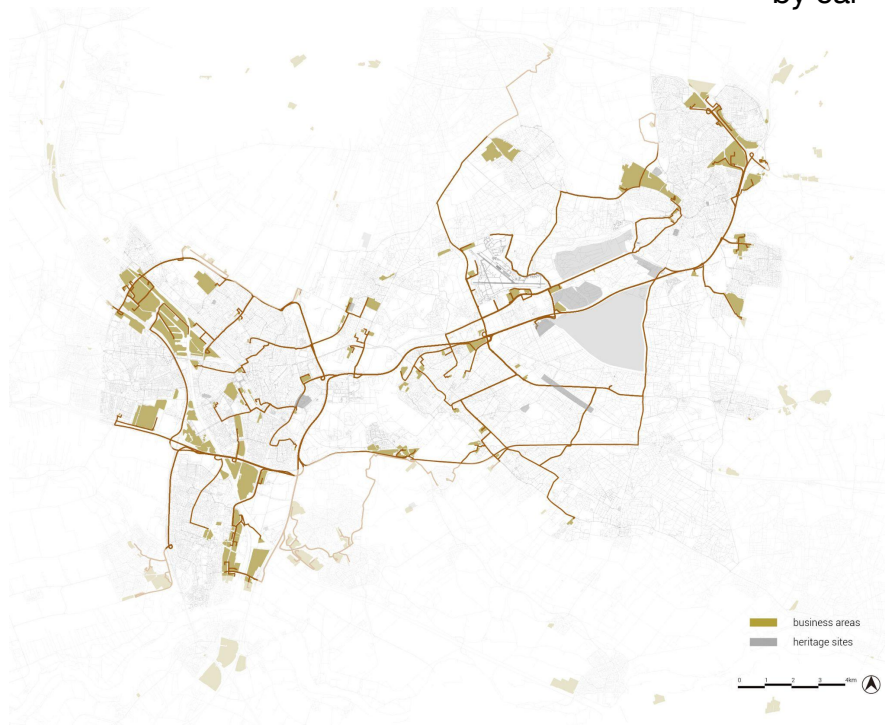
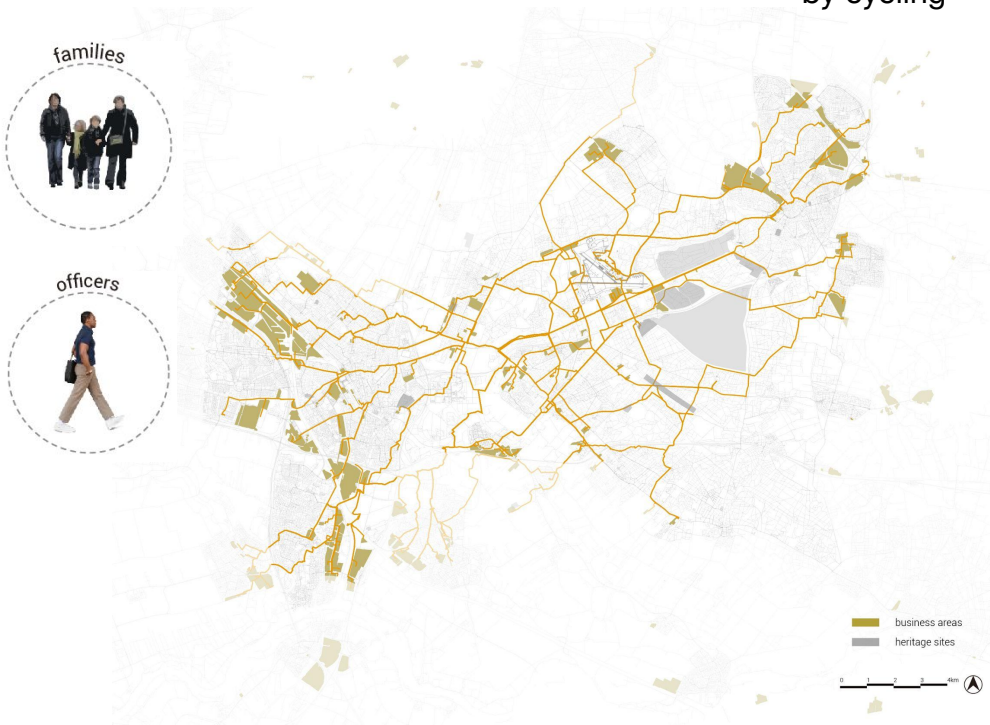
Accessibility

| Heritage Identity | Forest

2.socio-accessible

by cycling

by car



Accessibility

| Heritage Identity | Forest

2.socio-accessible

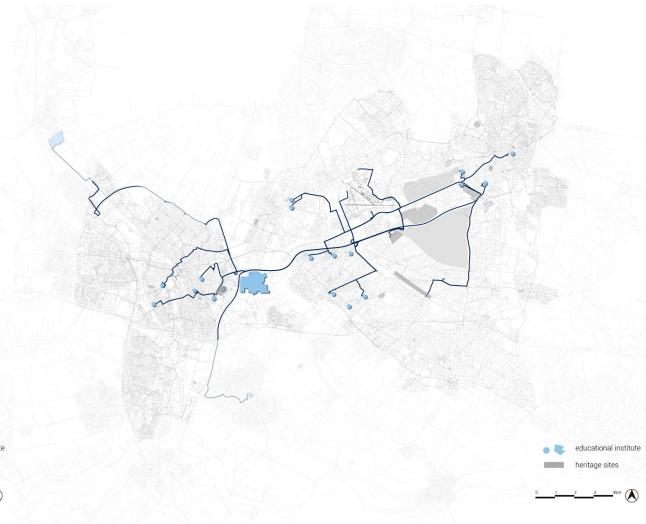
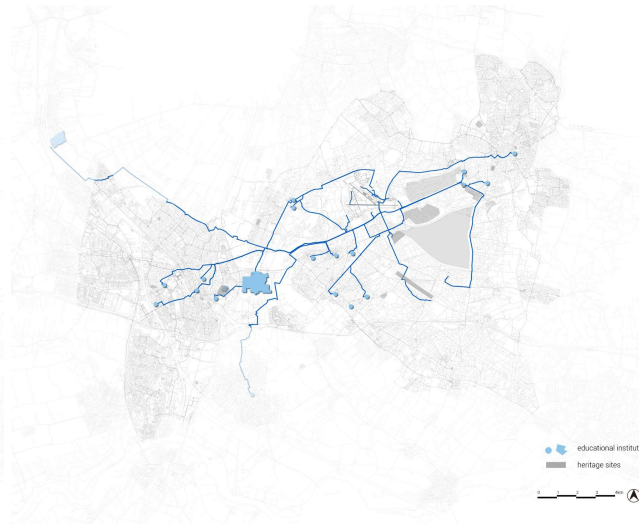
students



on foot

by cycling

by car



Accessibility

| Heritage Identity | Forest

2. socio-accessible



on foot

by cycling

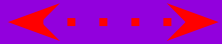
by car



Accessibility

| Heritage Identity | Forest

2.socio-accessible

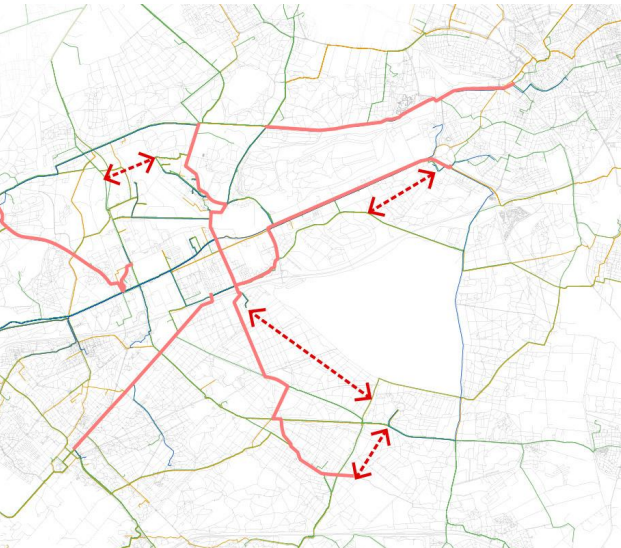


Need new connections

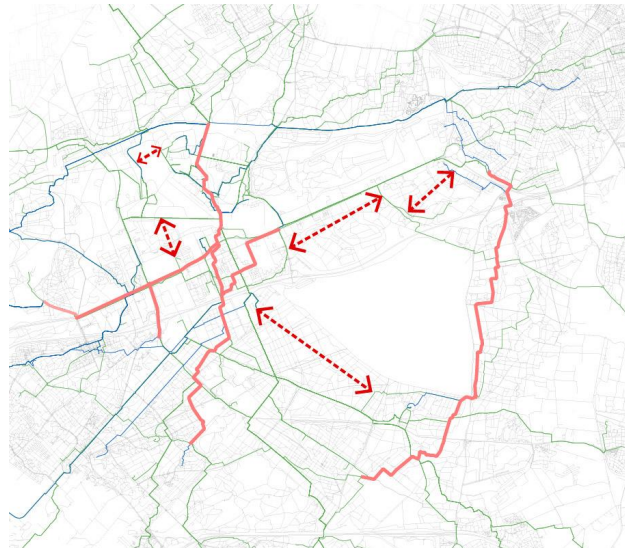


Most preferred-more diversities

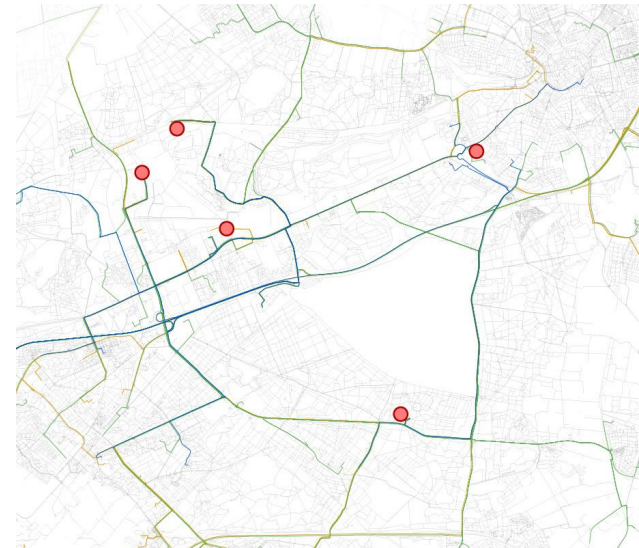
Cycling routes



Walking path

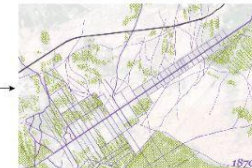


Car parking



Military heritage biography

PALIMPSEST



LANDSCAPE

woods disappearance

heathland

sandy moor

MILITARY

1650-1672

1672

1787

1804

1818

1863

1870

Kamp Zeist

Zeist was surrounded on the northeast side by an extensive heathland, as a military training ground



the heath below Zeist was used by the farmers for grazing their sheep

Another troops gathered on the Leuserheide. Near Zeist, the pro-principal army set up camp

Pyramide van Austerlitz dominant and constructed by French



Kamp bij Zeist not permanent, only for training in summer



Leuserheide became a closed military area



INFRASTRUCTURE

Estates

Amersfoortsestraat

Railway

Construction of country estates



Soester section: Stierenberg, Moer Berry Mountain, Bloemheuvel and the Oude Tempel; Zeister side: Dijnsburg, Ispotelie Huys ter Hartje, Zandbergen, Heybergen and Beukbergen.



60 meters wide three rows of oak trees on either side generously sized building plots public-private partnership houses of Zandbergen, Beukbergen

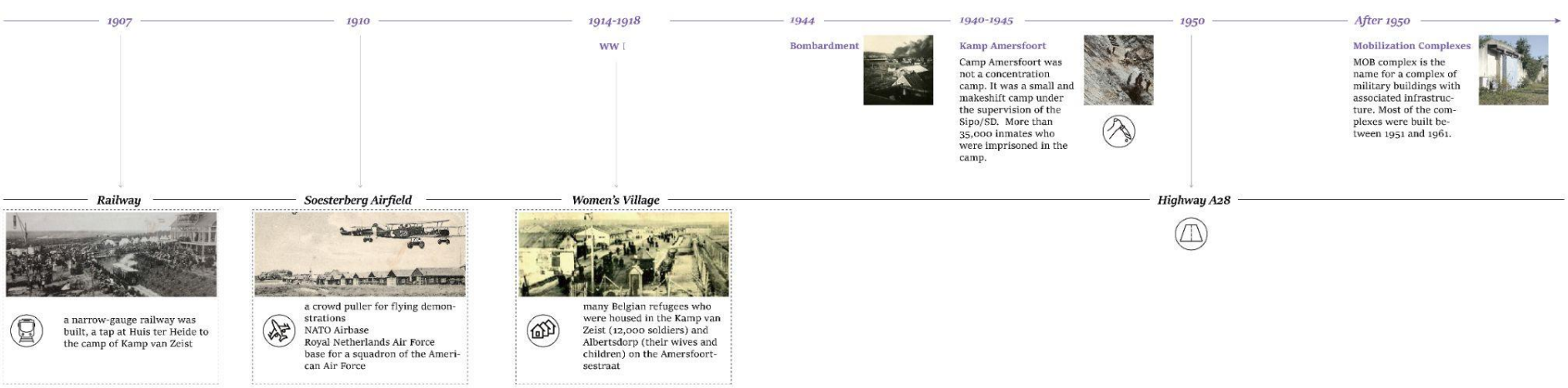


the railway line Utrecht-Amersfoort-Zwolle was put into use

Military heritage biography



forest regeneration



Military heritage biography

Wars in 4 Times & characters involved

NATO soldiers

There where permanent US air planes and forces stationed till the end of the cold war in 1989.



Prisoners

Neglect, starvation, abuse and murder left their mark on the residence of more than 35,000 inmates who were imprisoned in the camp

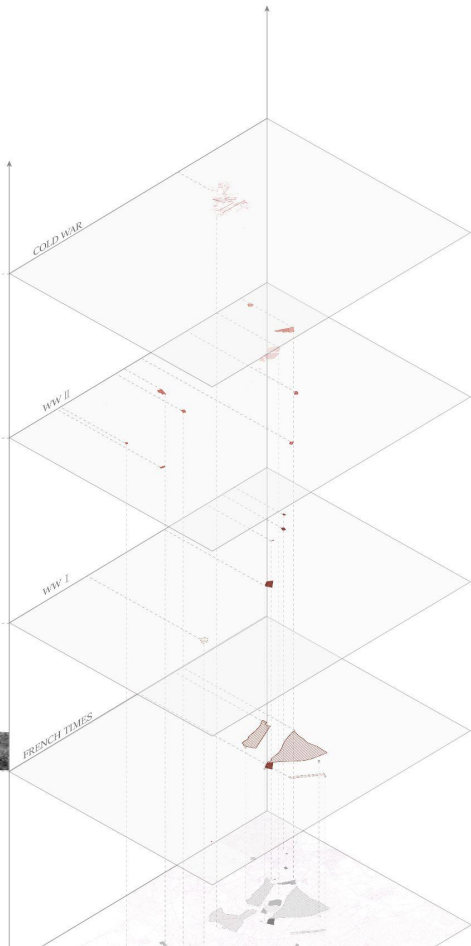


Belgium Refugee

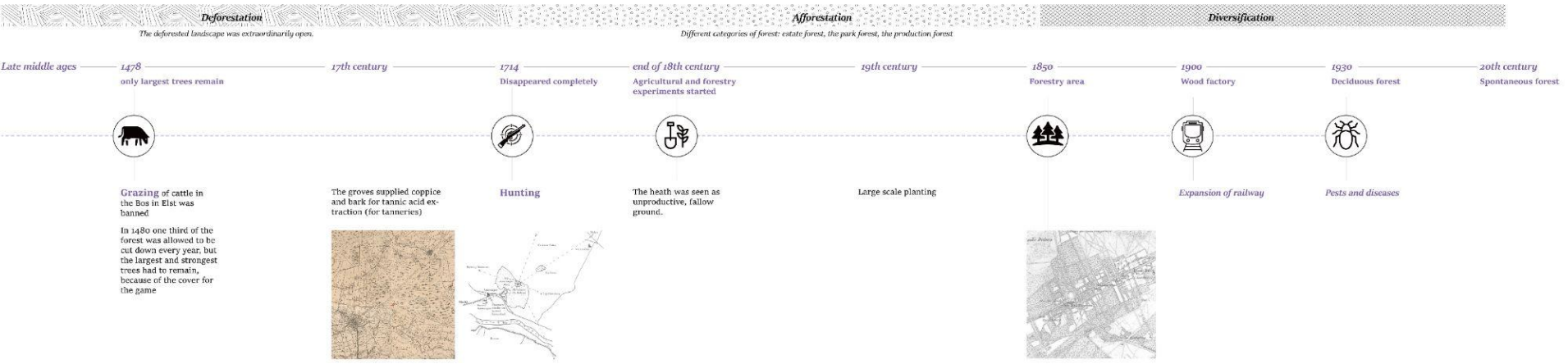
More than 12,000 refugee Belgian soldiers were interned in the immediate vicinity of the Camp



French Batavian tent camp for 18,000 men



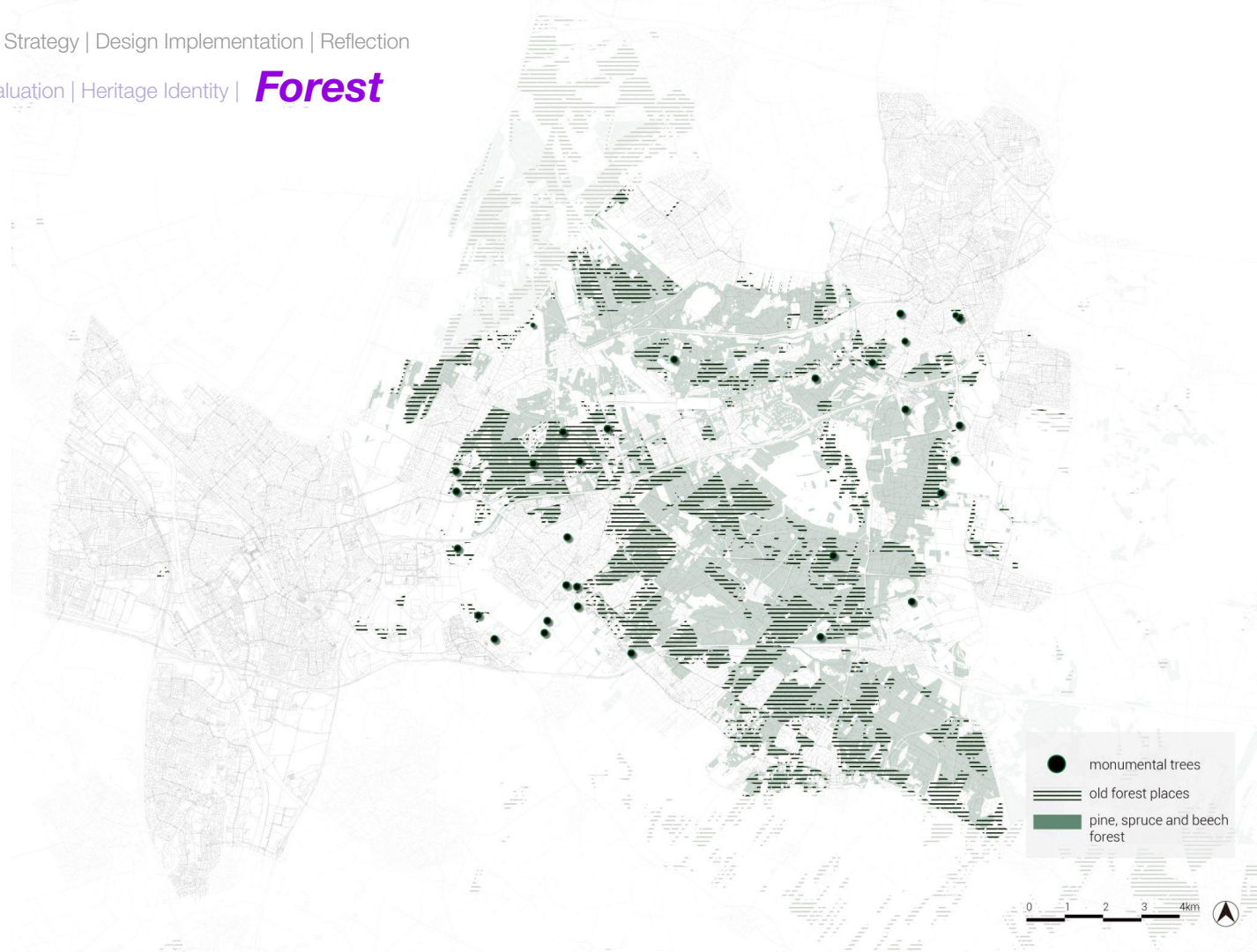
Forest modification biography



1. coniferous to deciduous

preserve old forest and
monumental trees

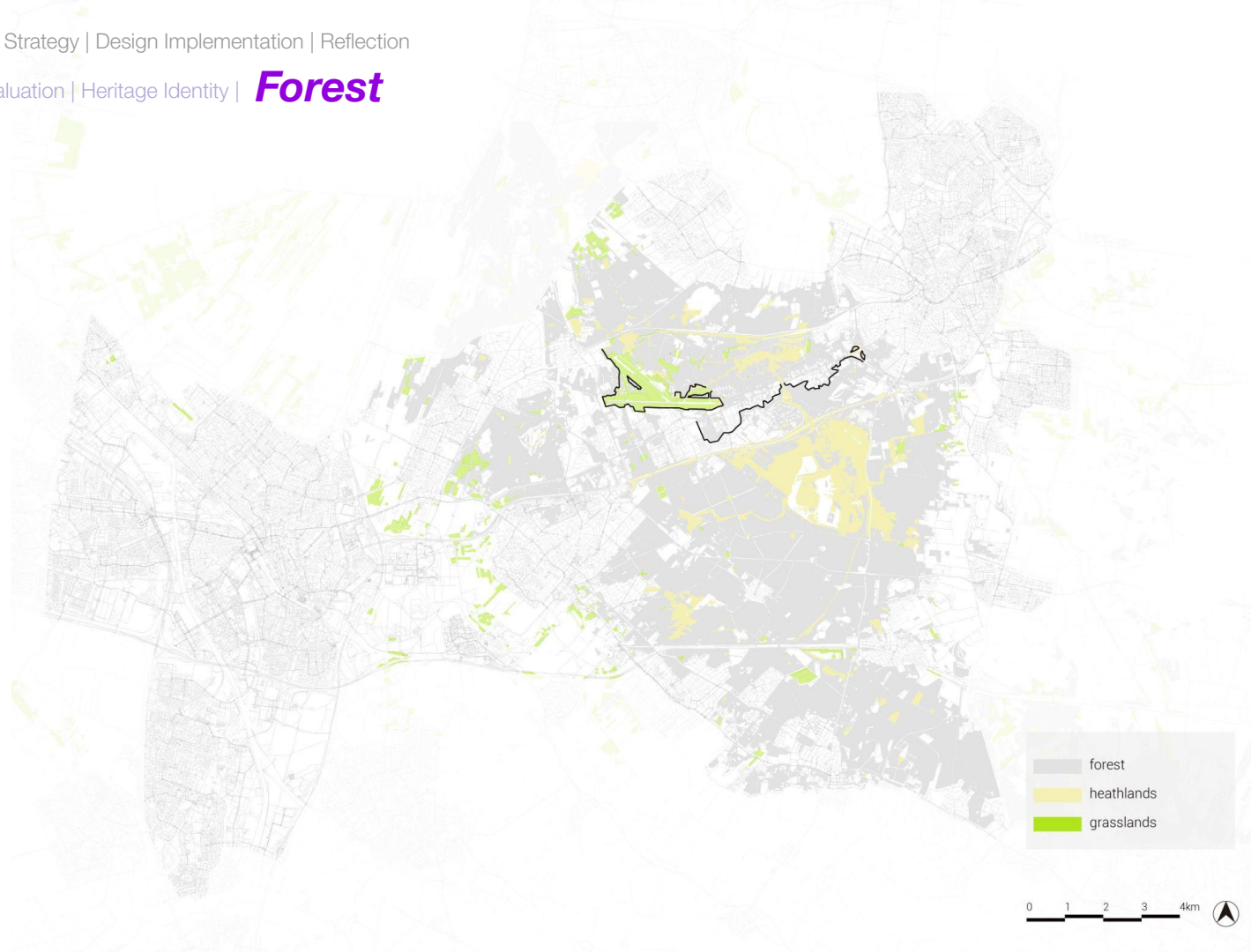
forest thinning from spruce



2. More trees

government's plan of adding
600000 trees in 2020-2030

the **fringe** between forests
and urban infrastructures
could be a choice



3. Animal crash

It is estimated that there are *more than 10,000* collisions with Ree in the Netherlands every year.

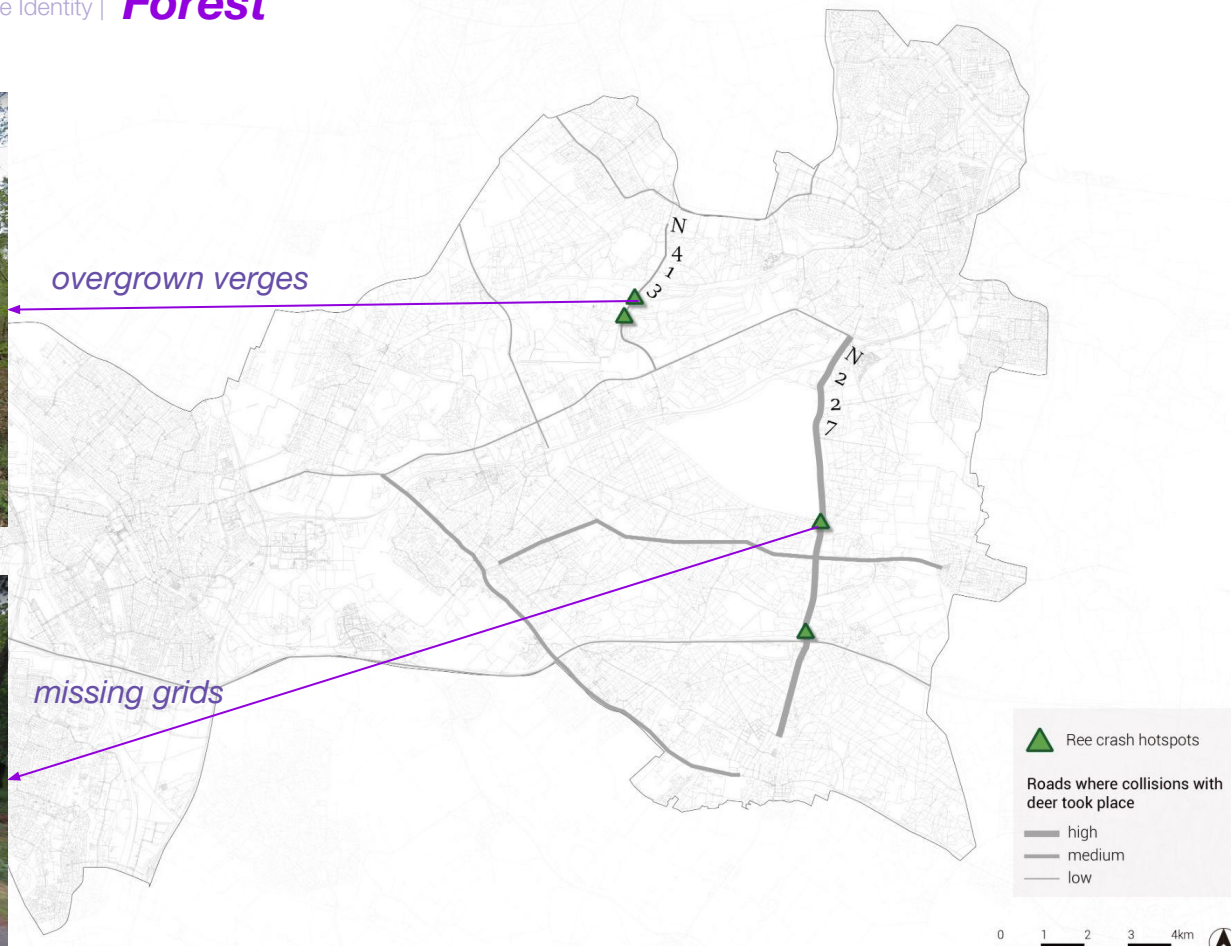




overgrown verges



missing grids



▲ Ree crash hotspots

Roads where collisions with deer took place

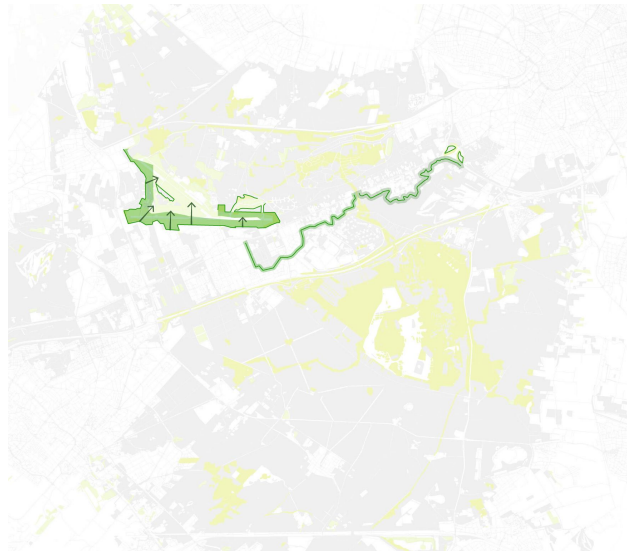
- high
- medium
- low



1. Forest diversification: preservation and thinning



2. Forest expansion: tree plantings on the fringe



3. Animal crash: overgrown verges and grids



DESIGN ASSIGNMENTS

Heritage recognition

people perceive, feel and transfer the emotions into mental awareness of heritage instead of arriving there without recognition.



Socio-accessible

the new road system meets the requirements of different groups of people as much as possible



Forest diversification

forest with diversified species



DESIGN STRATEGIES

Space / Historical elements extraction / Forest thinning

Space

| Historical elements extraction | Forest thinning | Planning

How to conclude the spacial strategies from analysis?

between high accessible roads and low accessible roads



socio-need connections



forest fringe



identified heritage patterns/roads



high accessible roads



socio-preferred roads



military training boundaries



high&medium accessible roads



between socio-preferred roads



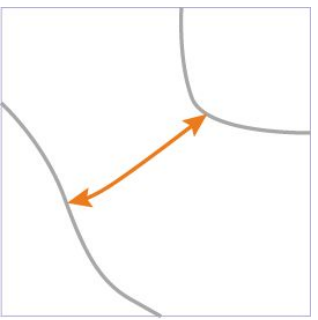
forest thinning



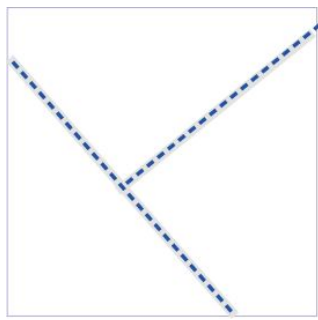
military training boundaries



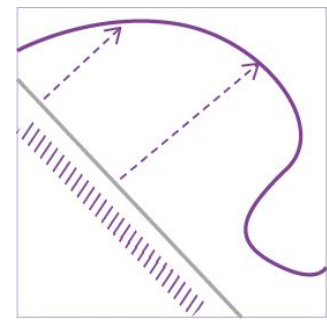
animal crash spots



CONNECT



REUSE



DIVERSIFY



AVOID

How to realize the “understandability” and “presentation”?

Cold War



Aircrafts



Steel



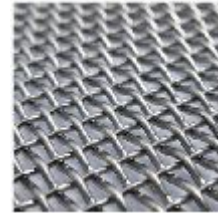
Asphalt(black)

How to realize the “understandability” and “presentation”?

World War II



“Palestina Express”



Wire(black/silver)



Cinder(black and grey)

How to realize the “understandability” and “presentation”?

World War I



Sheltered house



Belgium refugee
monument



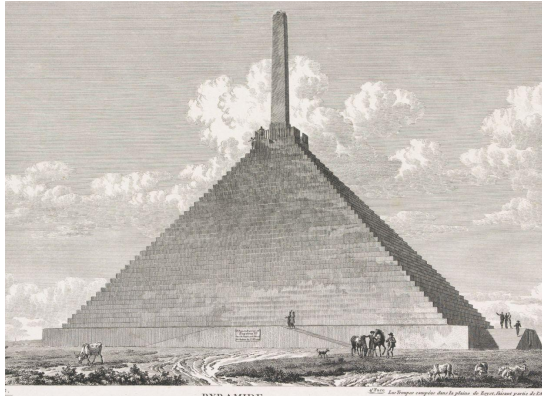
Bricks(red)



Wood plank

How to realize the “understandability” and “presentation”?

French times



Pyramid



Stones

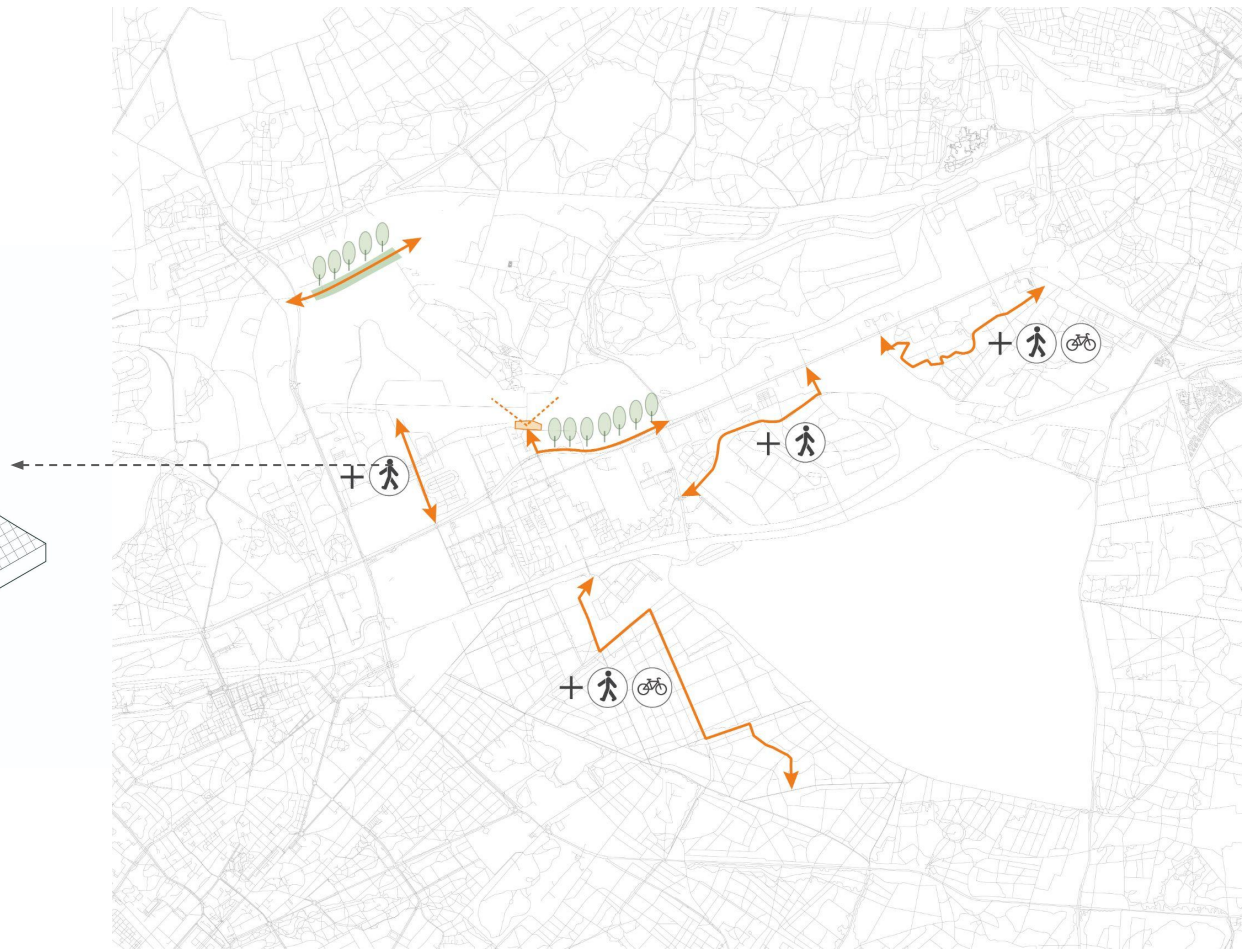
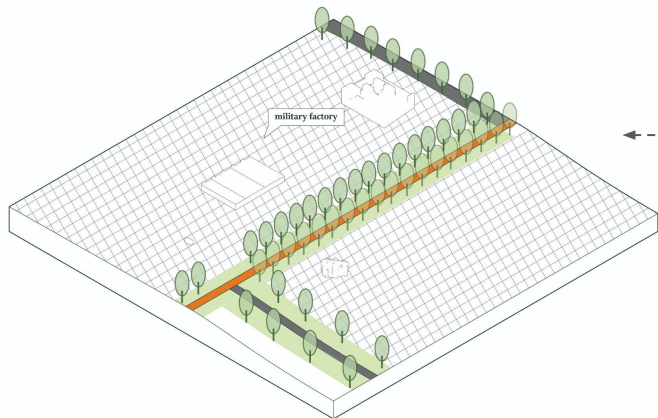
How to turn the coniferous forest to deciduous forest?



Connect

Add connecting path
(urban environment)

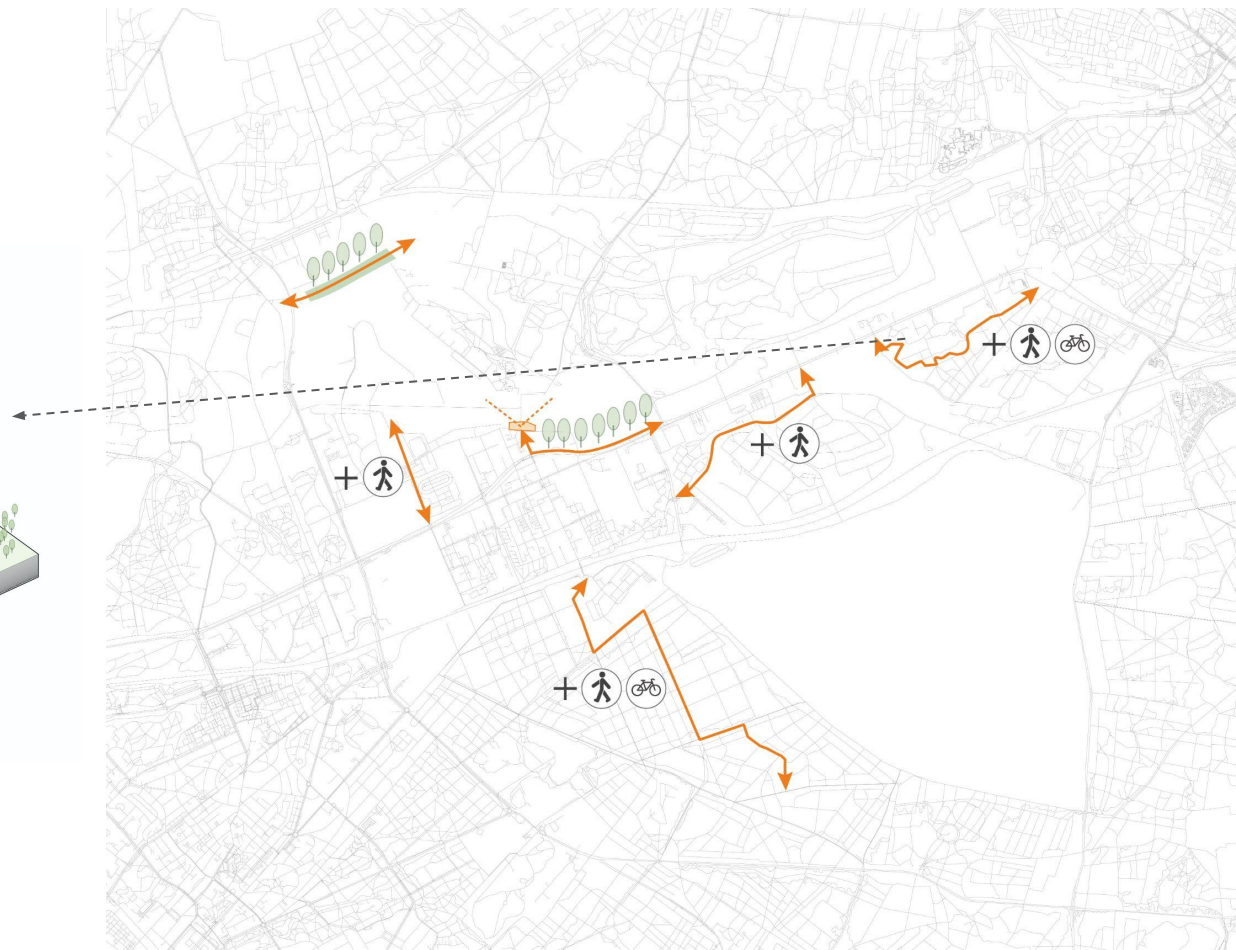
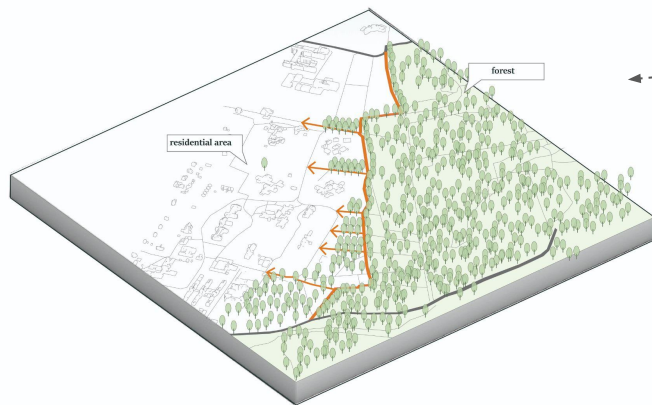
M



Connect

Add connecting path
(in forest)

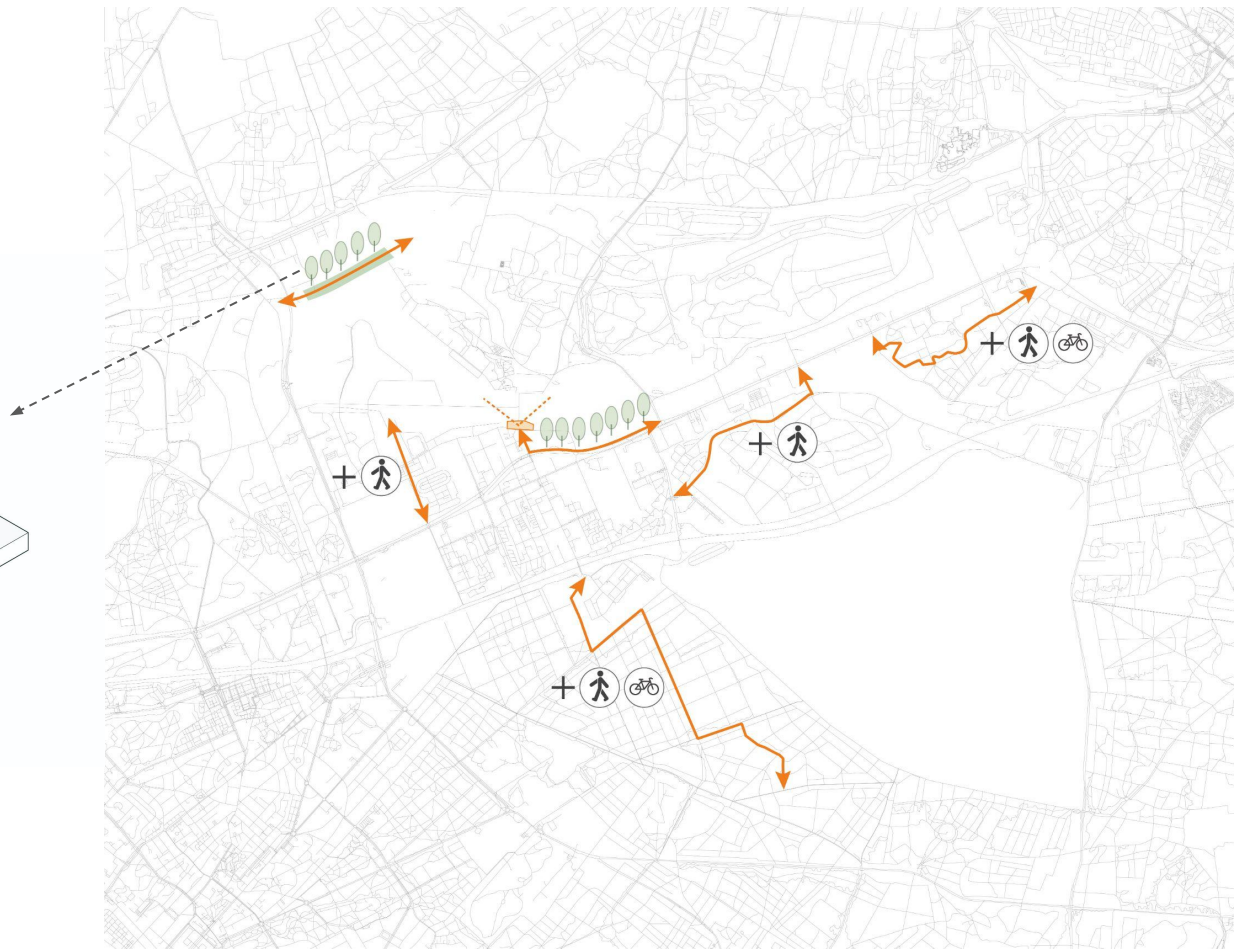
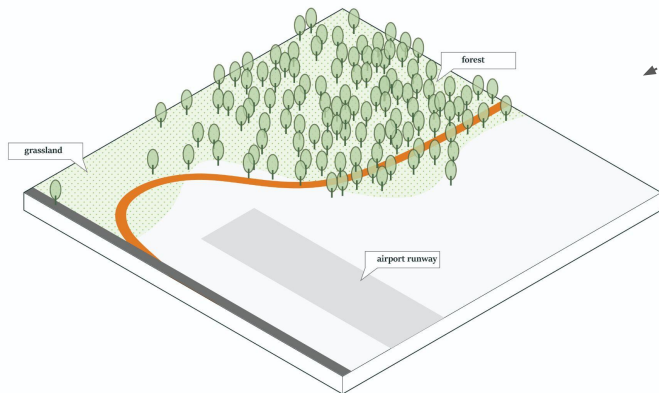
L



Connect

Forest-grasslands walking path

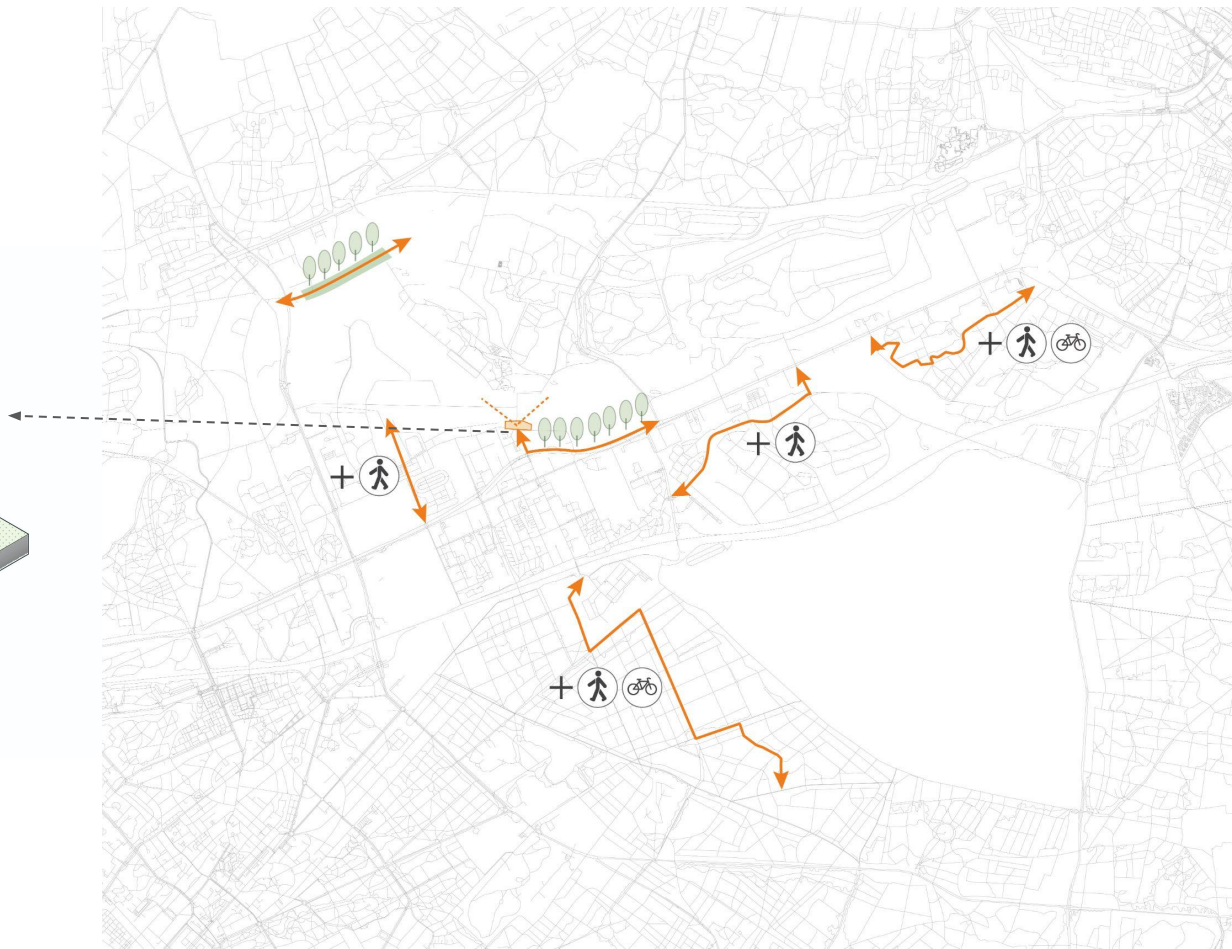
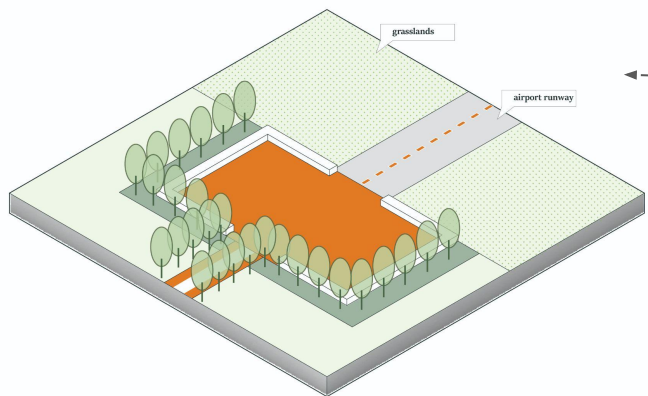
M



Connect

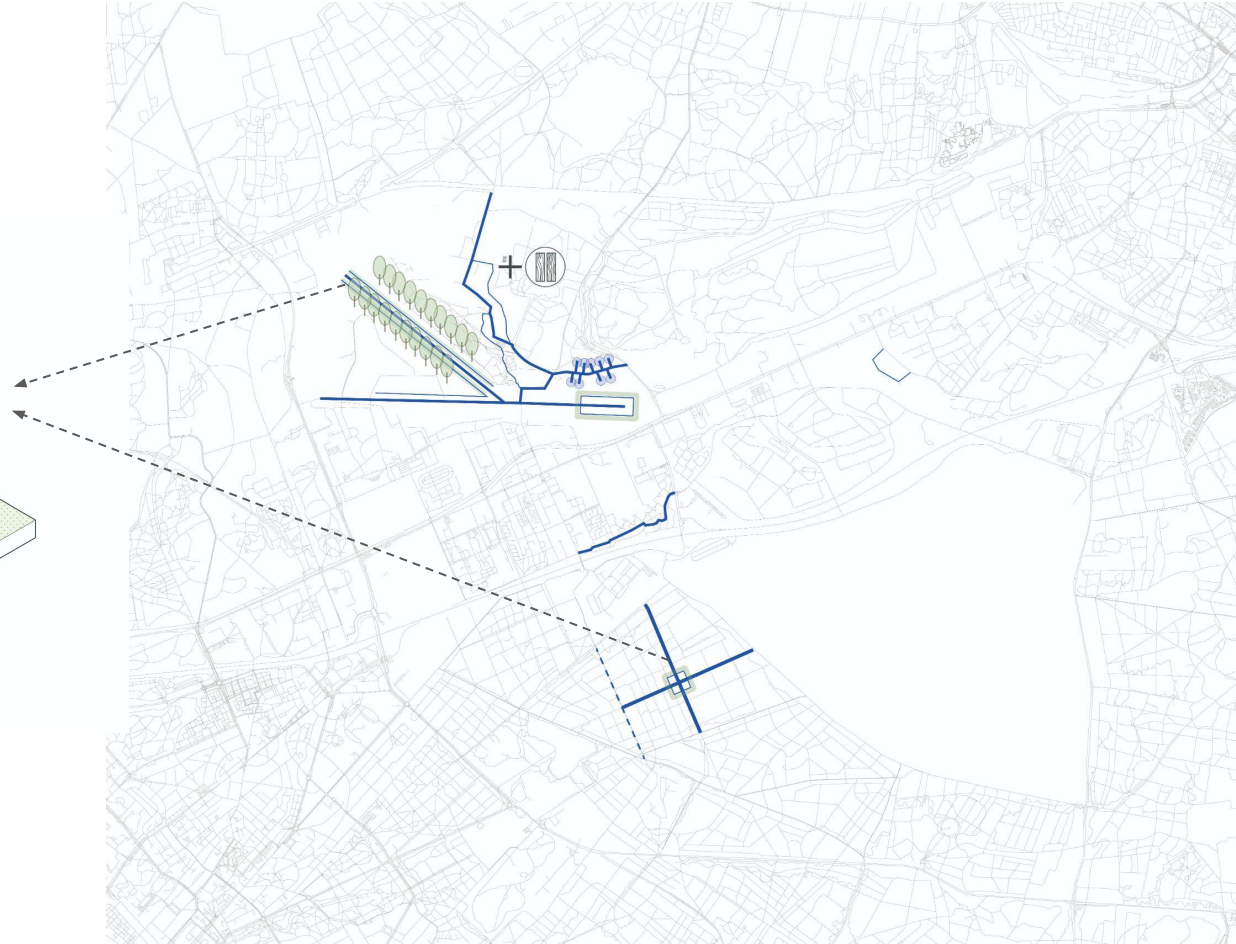
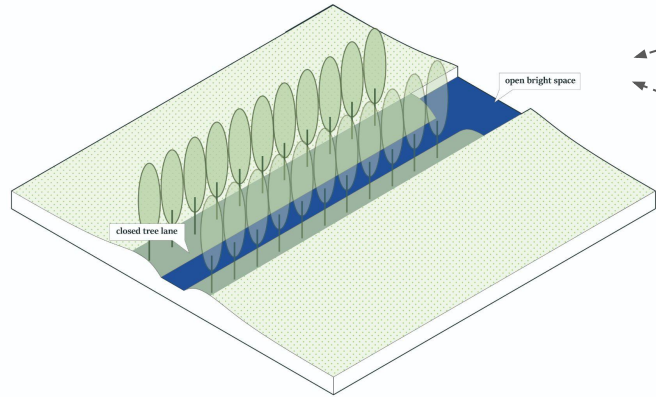
Open entrance with oriental path

S



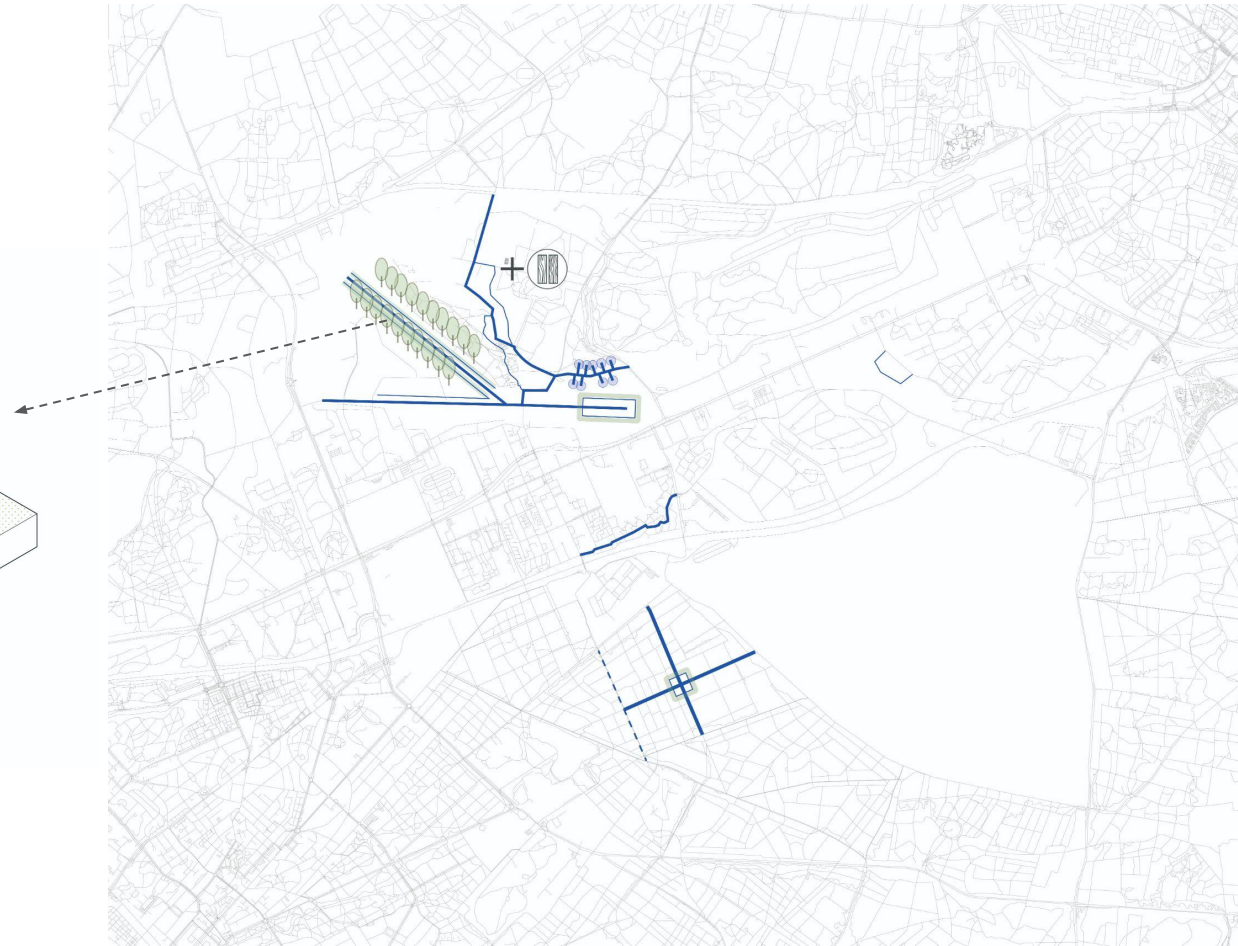
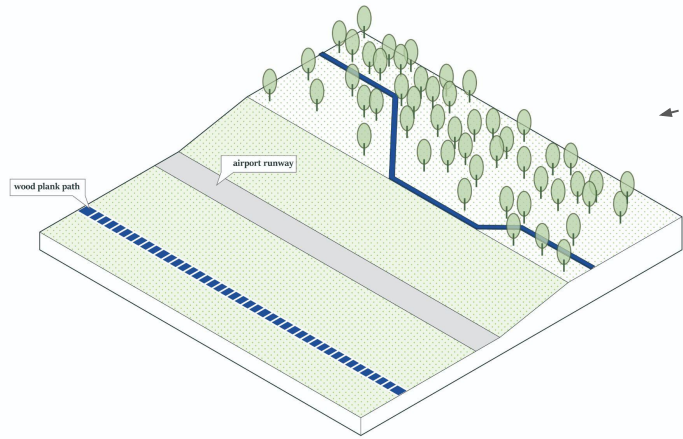
Reuse

Monumental avenue
S



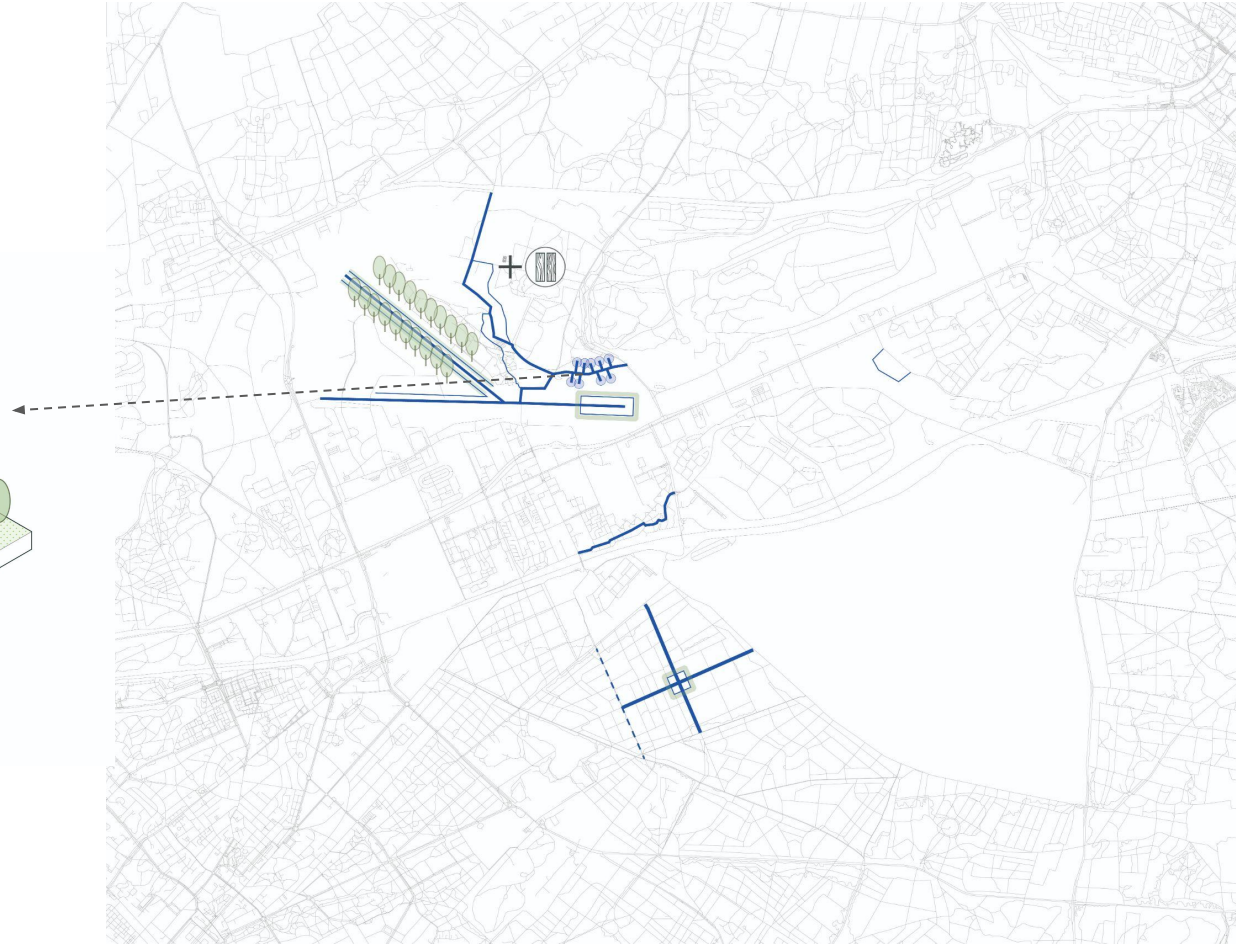
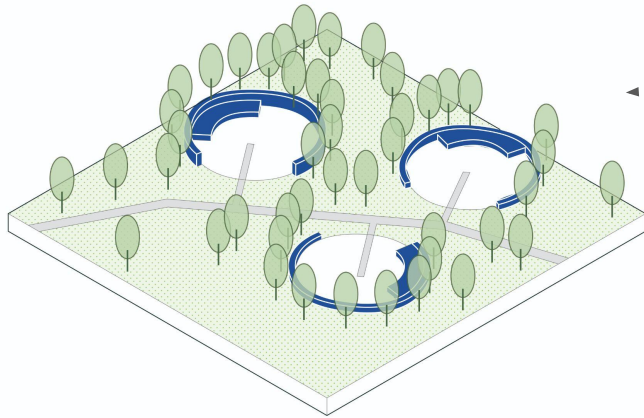
Reuse

Parallel wood planks path
M



Reuse

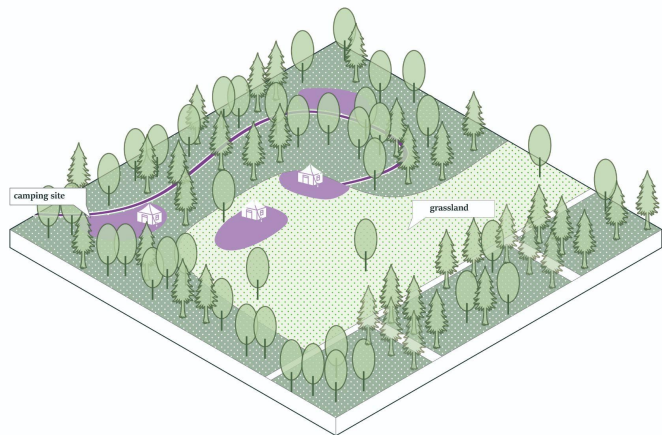
Education square
M



Diversify

Mixed forest park with camping sites

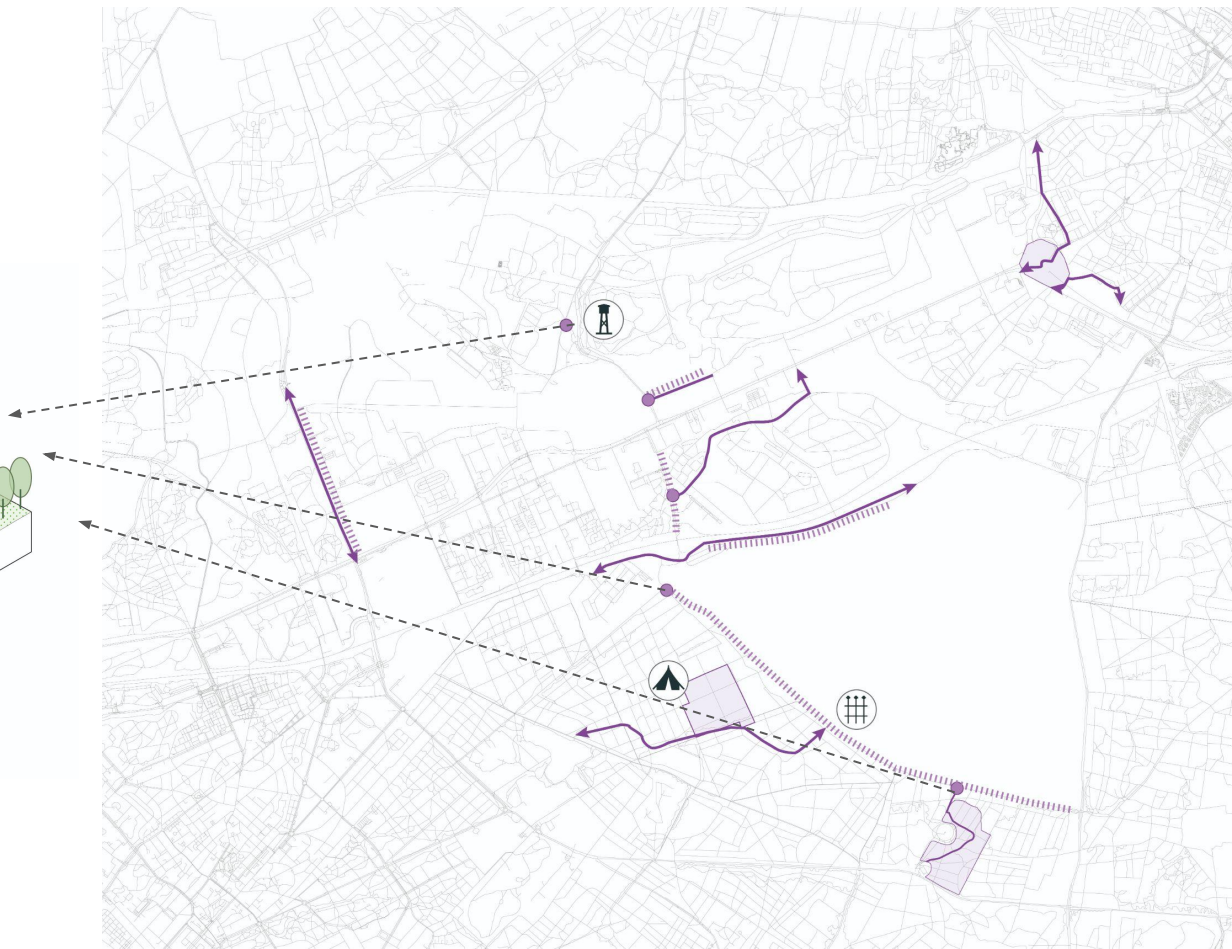
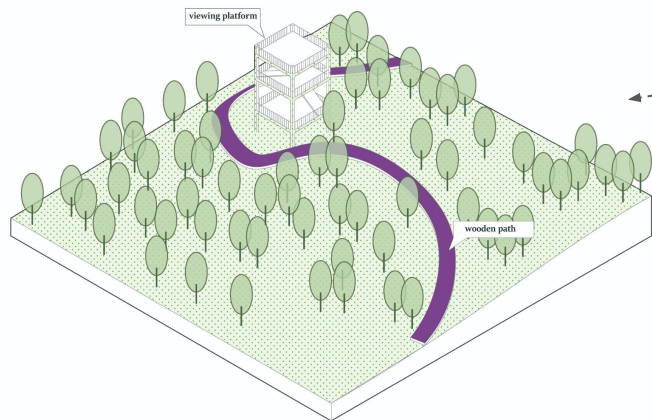
M



Diversify

Lookout platform/watchout tower

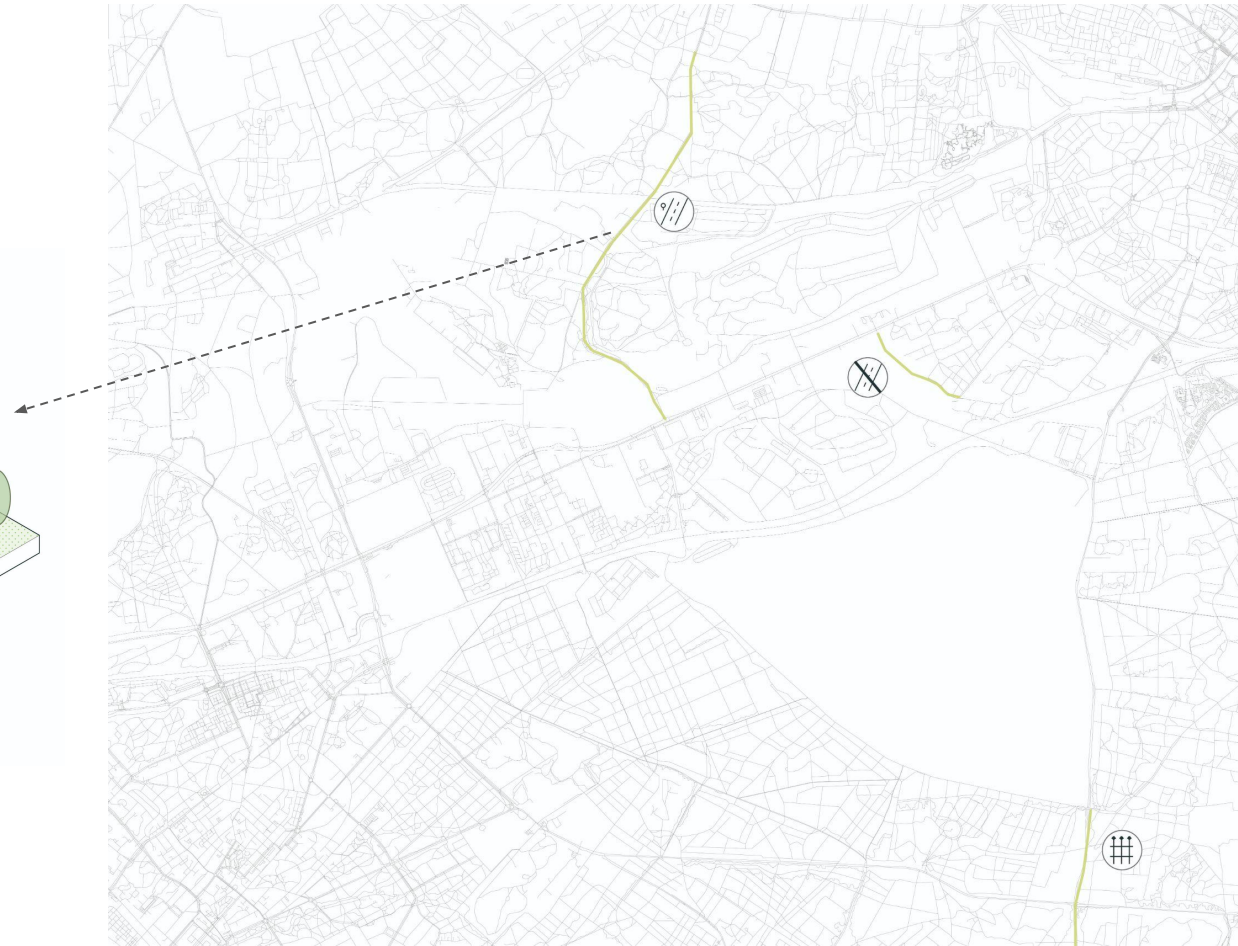
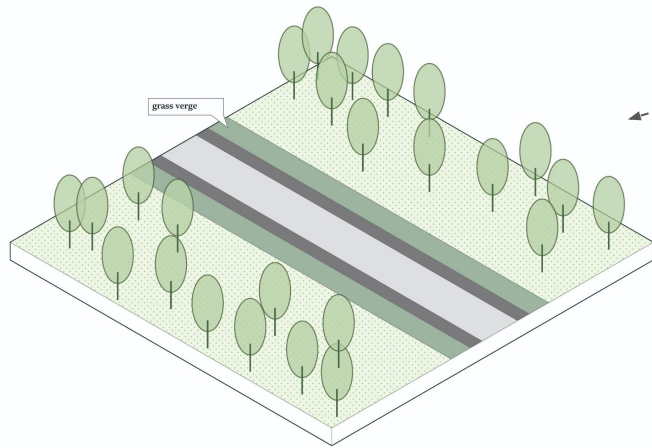
S



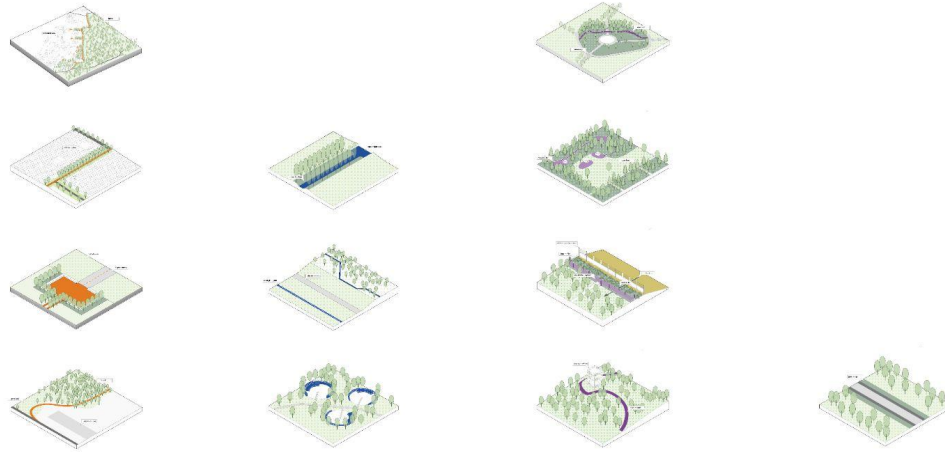
Avoid

Removal of forest and/or thickets

S



SPATIAL EXPRESSIONS



DESIGN STRATEGIES



connect

reuse

diversify

avoid

DESIGN ASSIGNMENTS



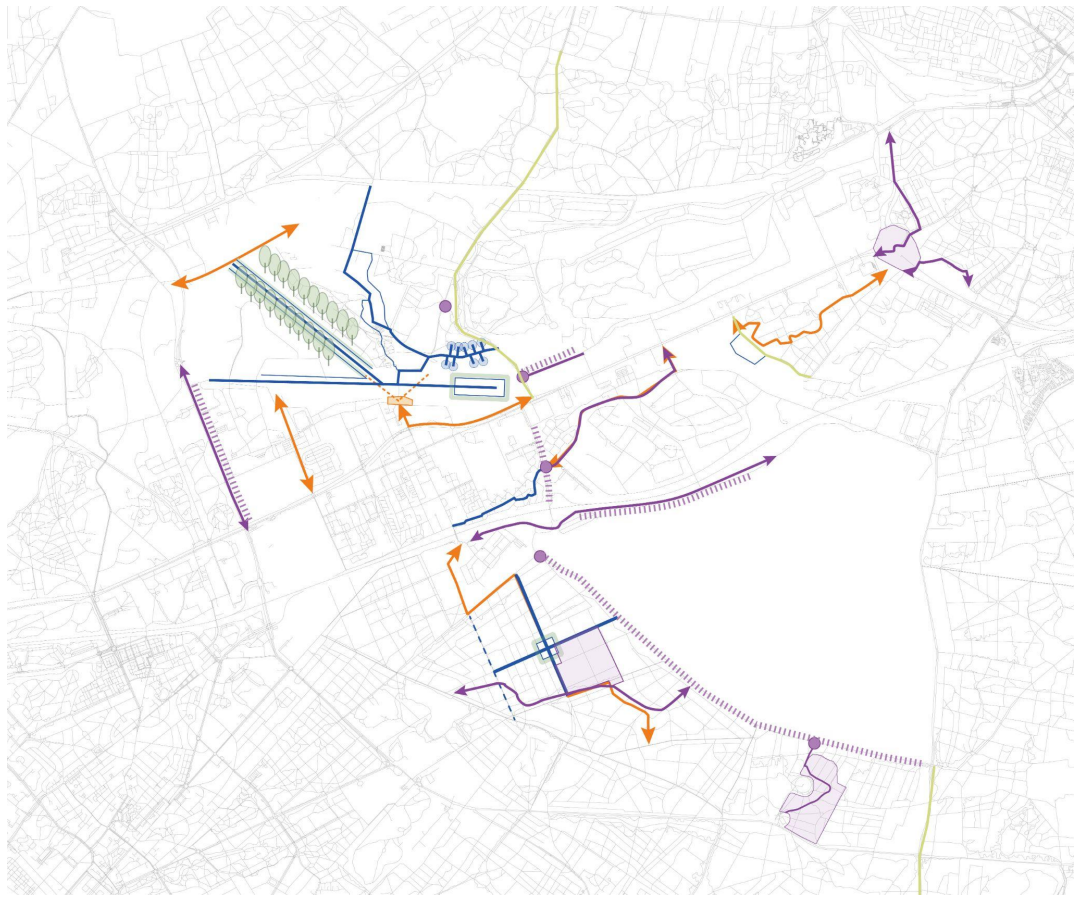
heritage recognition



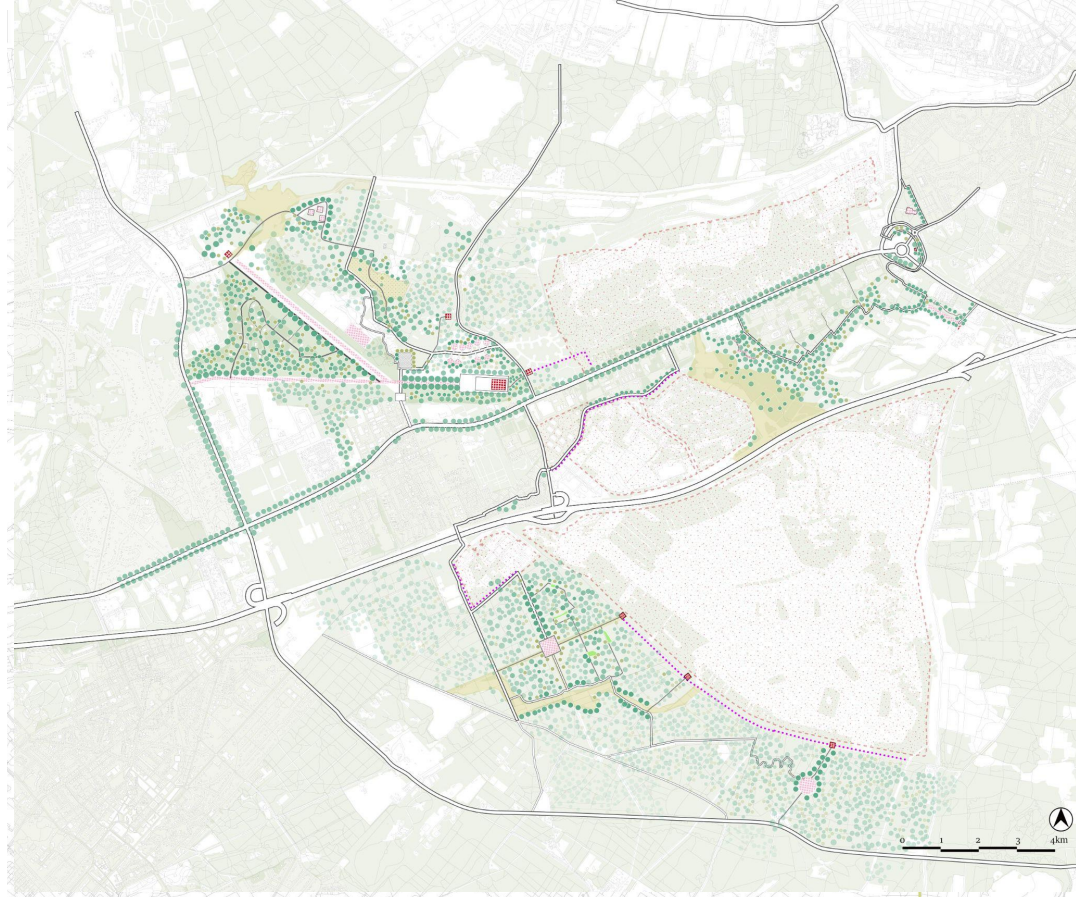
socio-accessible



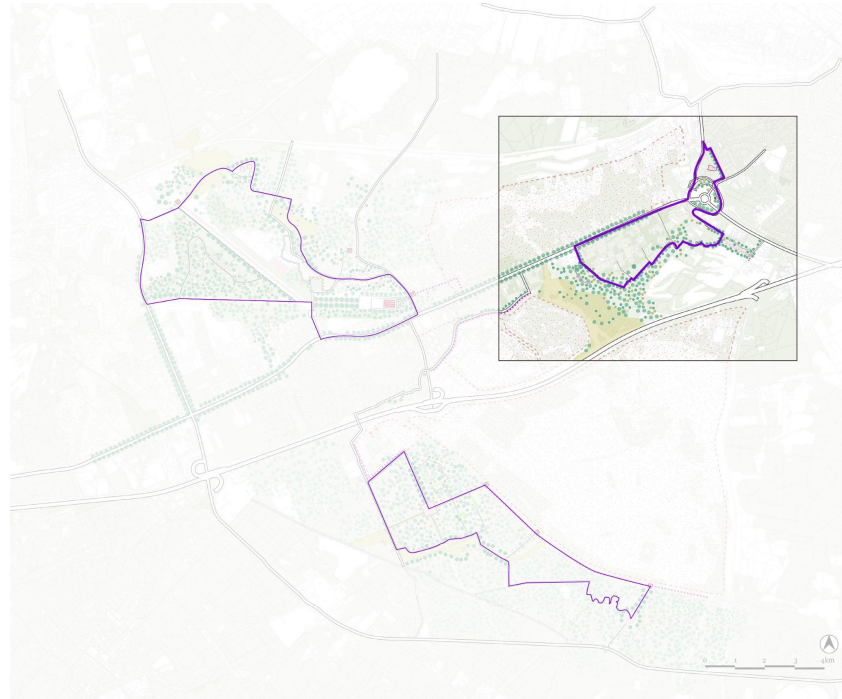
forest diversification



REGIONAL VISION



LOCAL LOOP

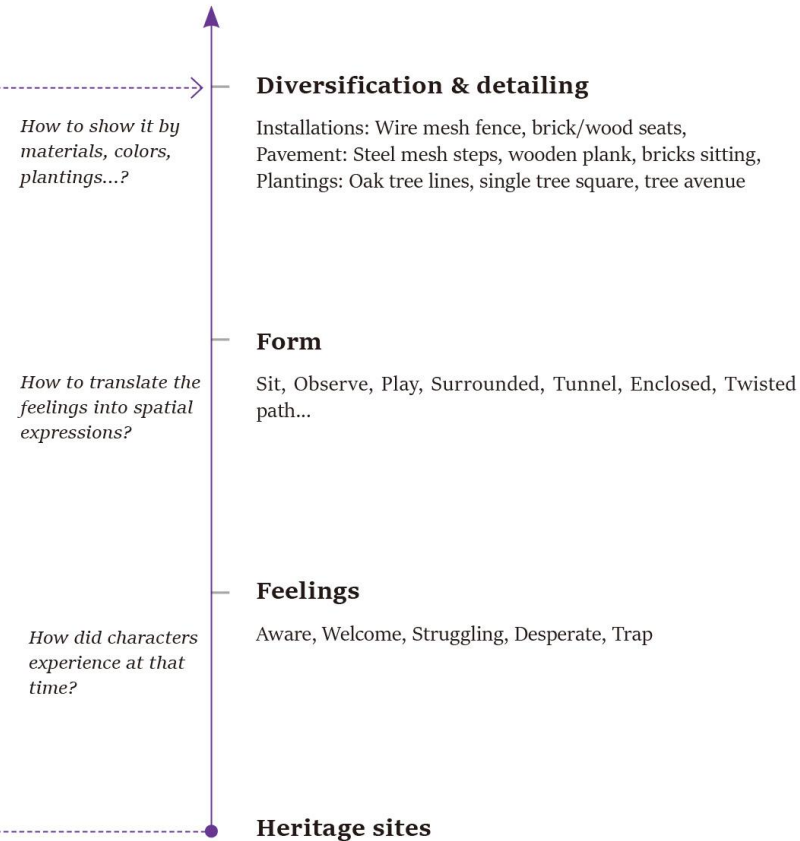


LOCAL LOOP

Feelings&forms / Socio-accessible / Masterplan / Nodes&line

Feelings&Forms | Socio-accessibility | Masterplan | Nodes&lines

How to implement the 'historical elements extraction' strategy in the local scale?

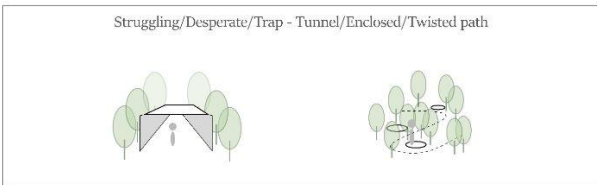
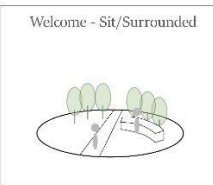
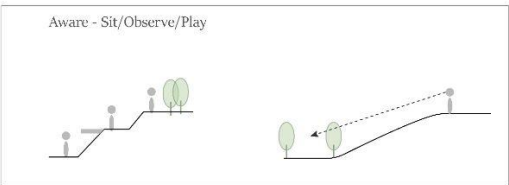


Feelings&Forms

| Socio-accessibility | Masterplan | Nodes&lines

Diversification & detailing

Feelings & Form



Oude Kamp

Amersfoortsestraat

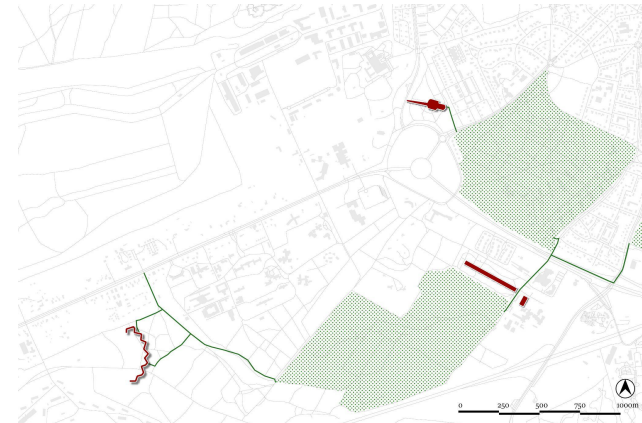
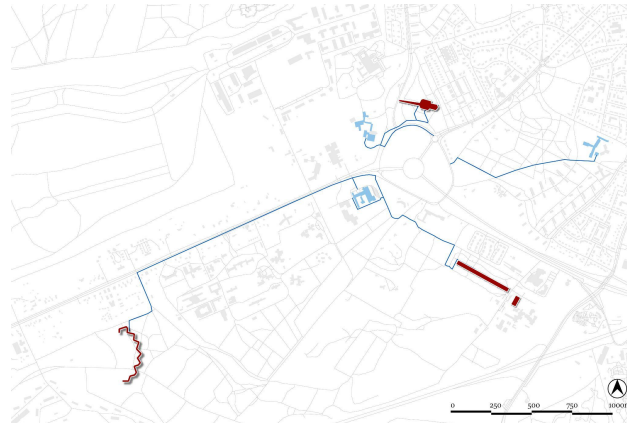
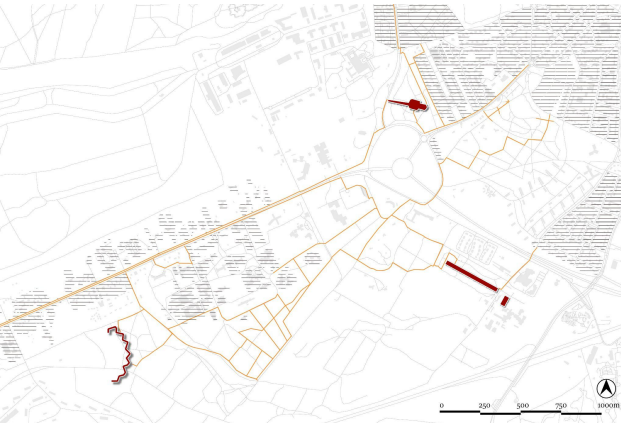
Belgium Monument

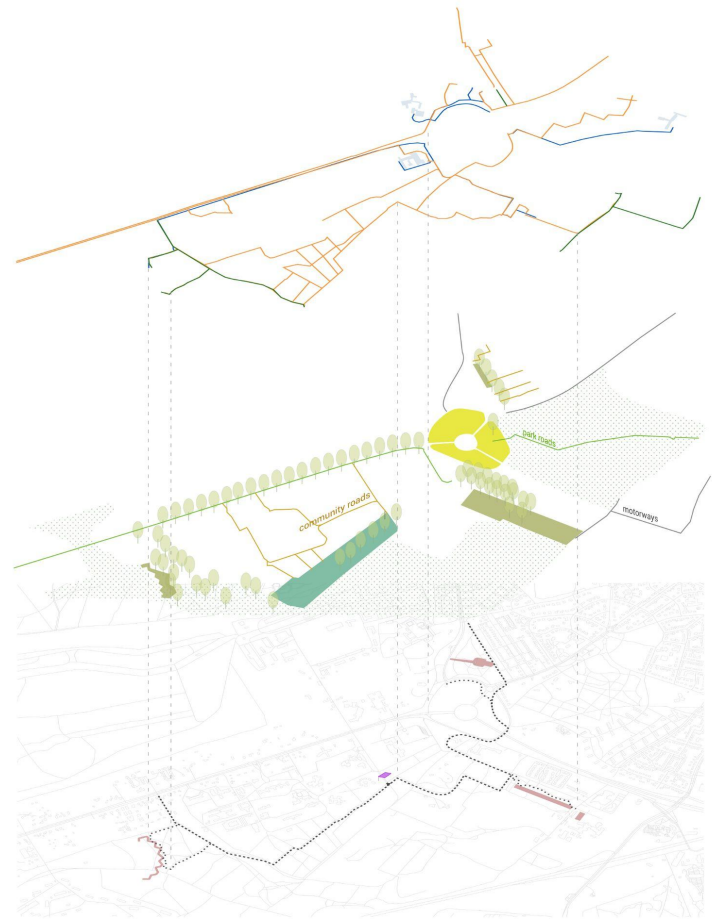
Shooting range & mass grave





Kamp Amersfoort

Heritage sites

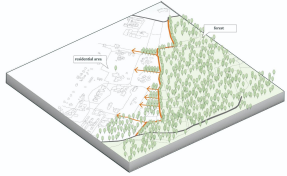
How do the functional areas get access to the heritage site?



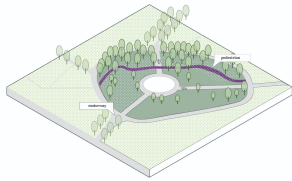


-  Mobility forestry park
-  Heritage theme park
-  Community park
-  Current recreational park

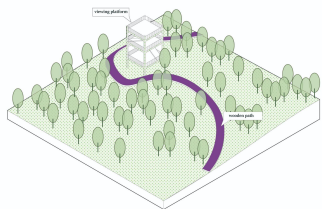
Connect



Diversify(infrastructure park)



Diversify(lookout)

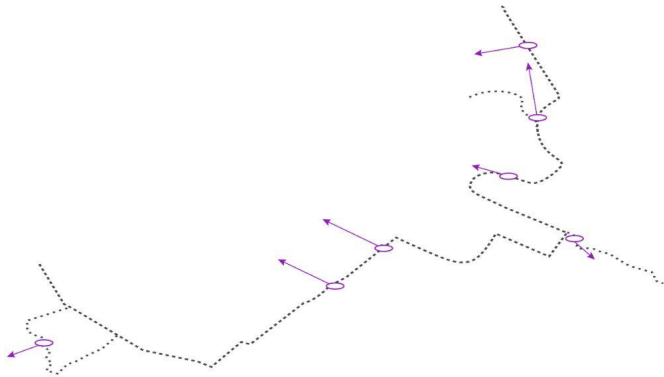


- 1 Belgium monument garden entrance
- 2 Pedestrian bridge to view the Belgium monument
- 3 Tunnel in the woods
- 4 Clink paths and stone seat in forest
- 5 Monumental installation
- 6 Viewing platform
- 7 Wooden path and sandy pitch in Oude Kamp
- A Belgium monument
- B De Stenen Man
- C Kamp Amersfoort
- C Oude Kamp

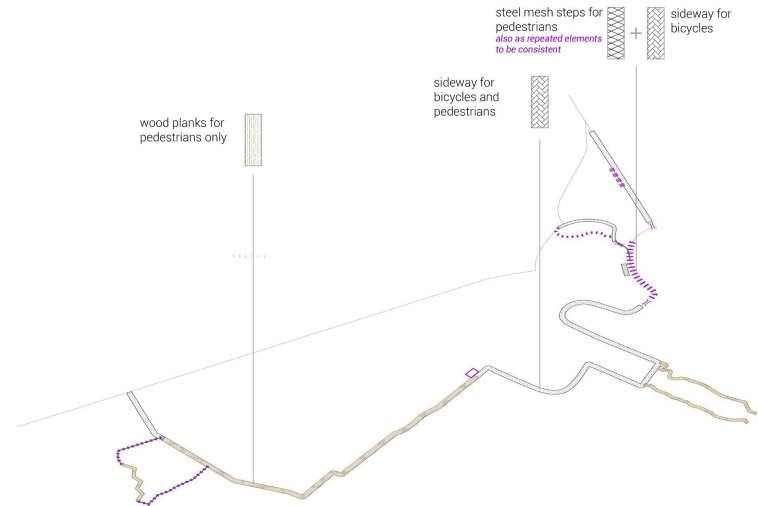


How to make the 'presentation' 'spatial planning' strategy tangible in the local scale?

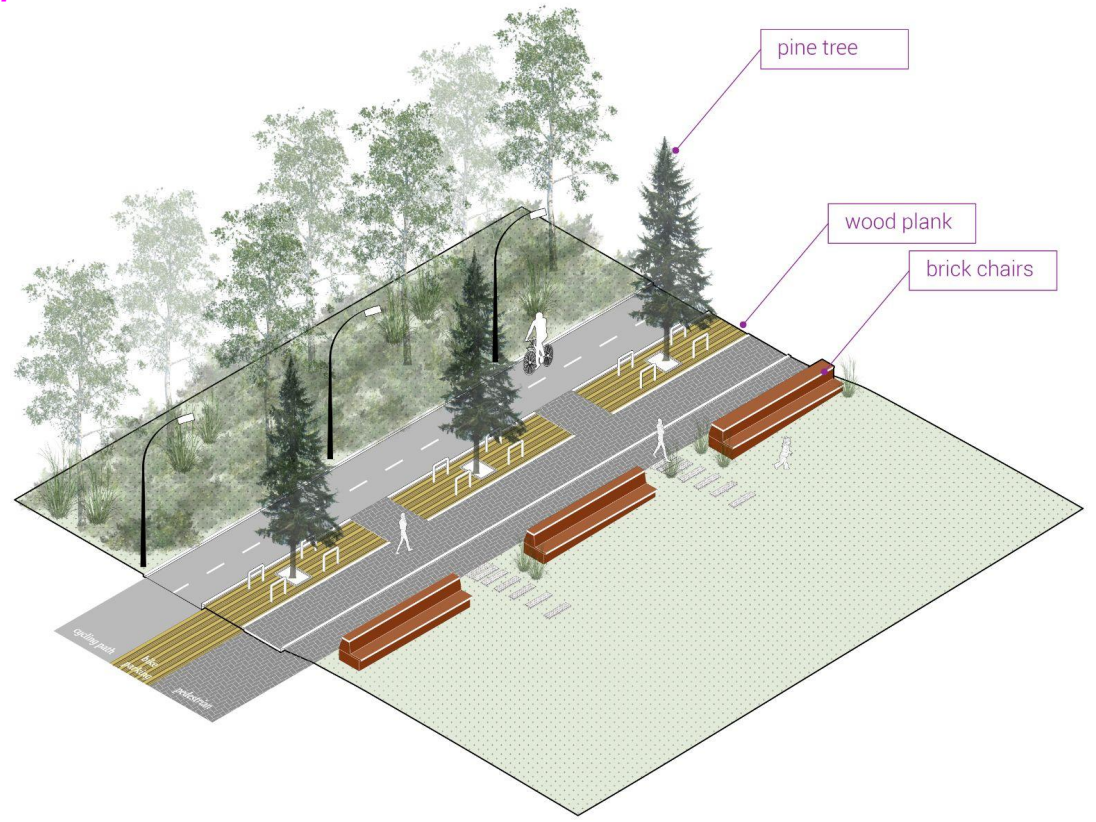
NODES (7)



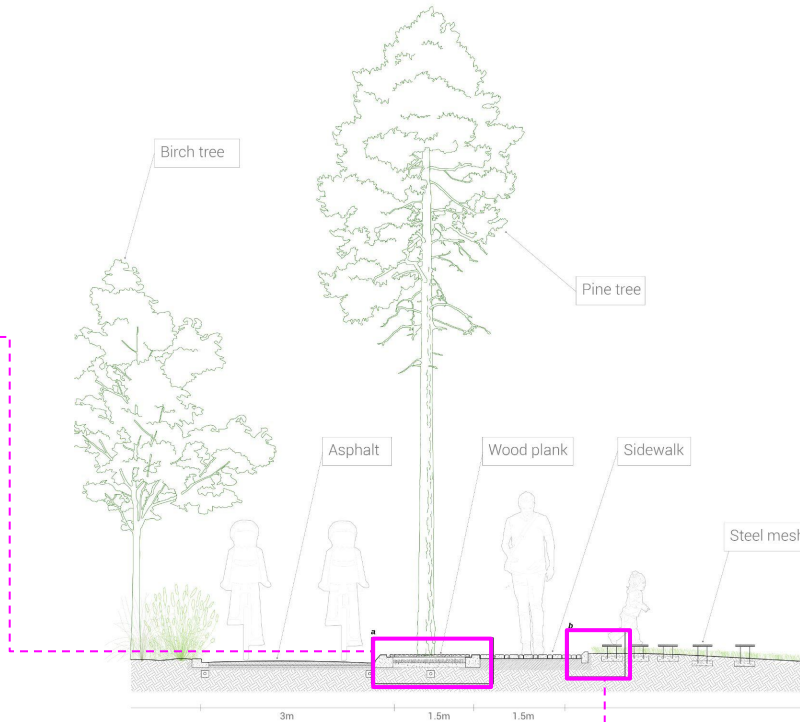
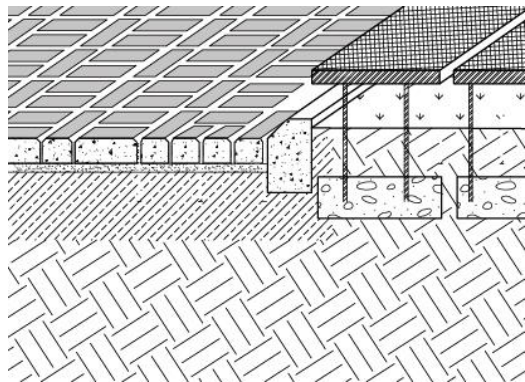
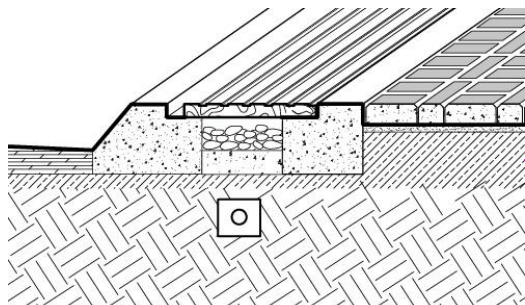
LINE (4)



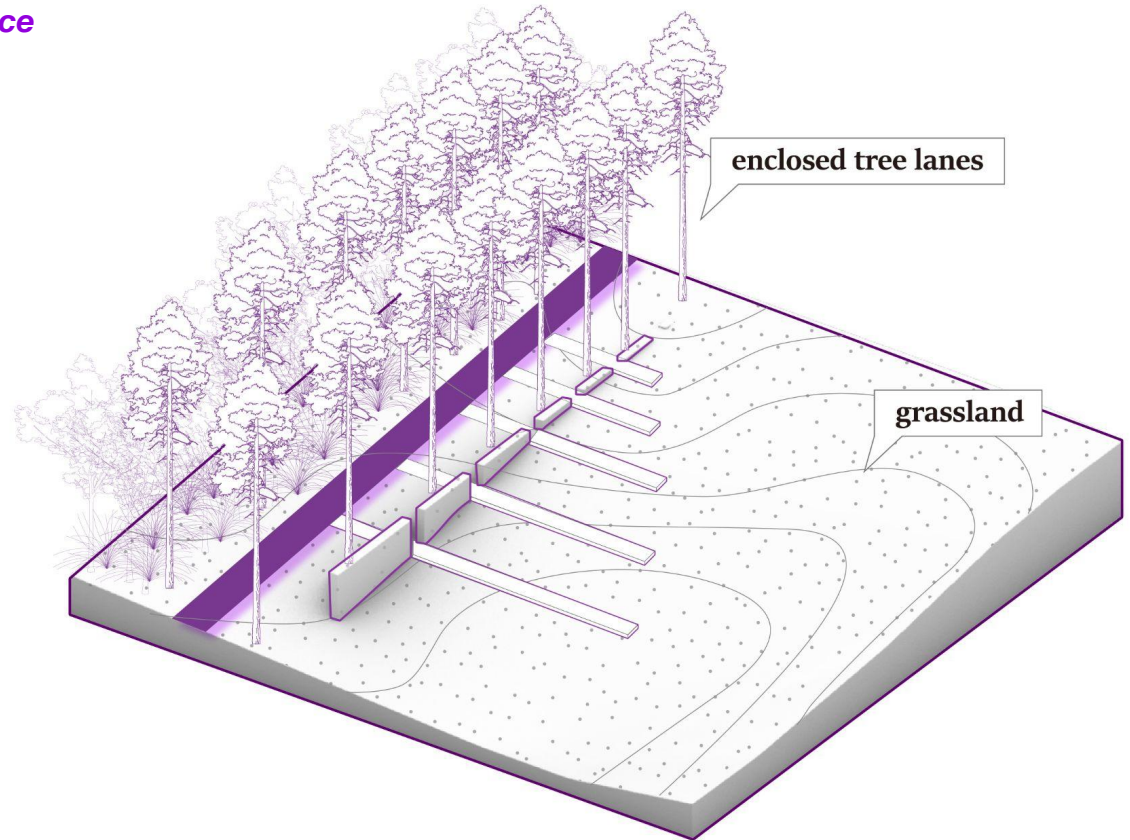
Line01 Sidewalk - Wood plank - Steel mesh steps



Line01 Sidewalk - Wood plank - Steel mesh steps

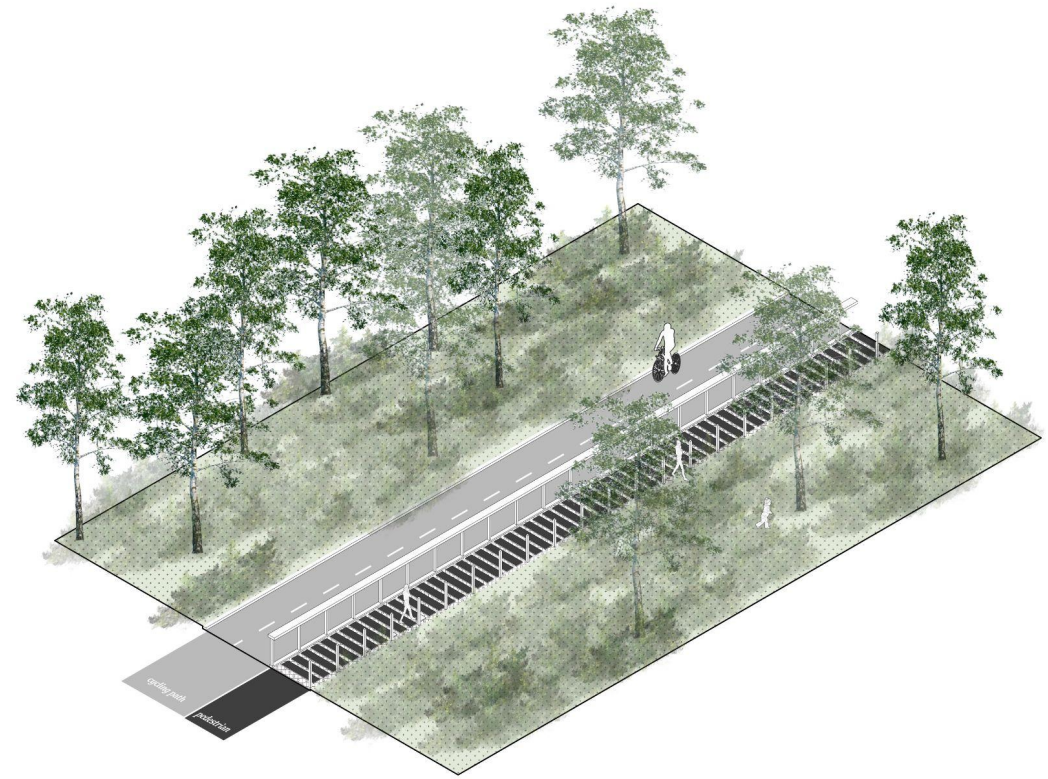


Node01- Belgium monument garden entrance

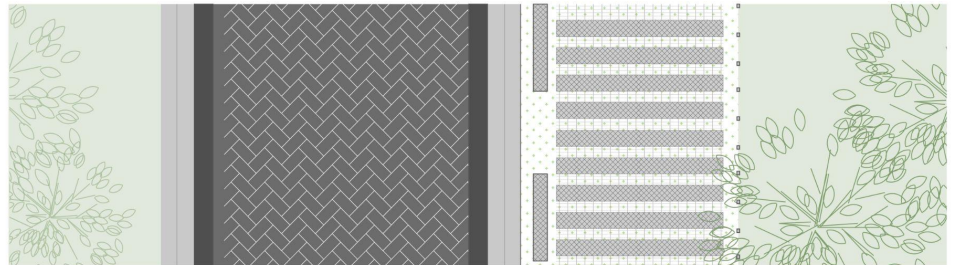
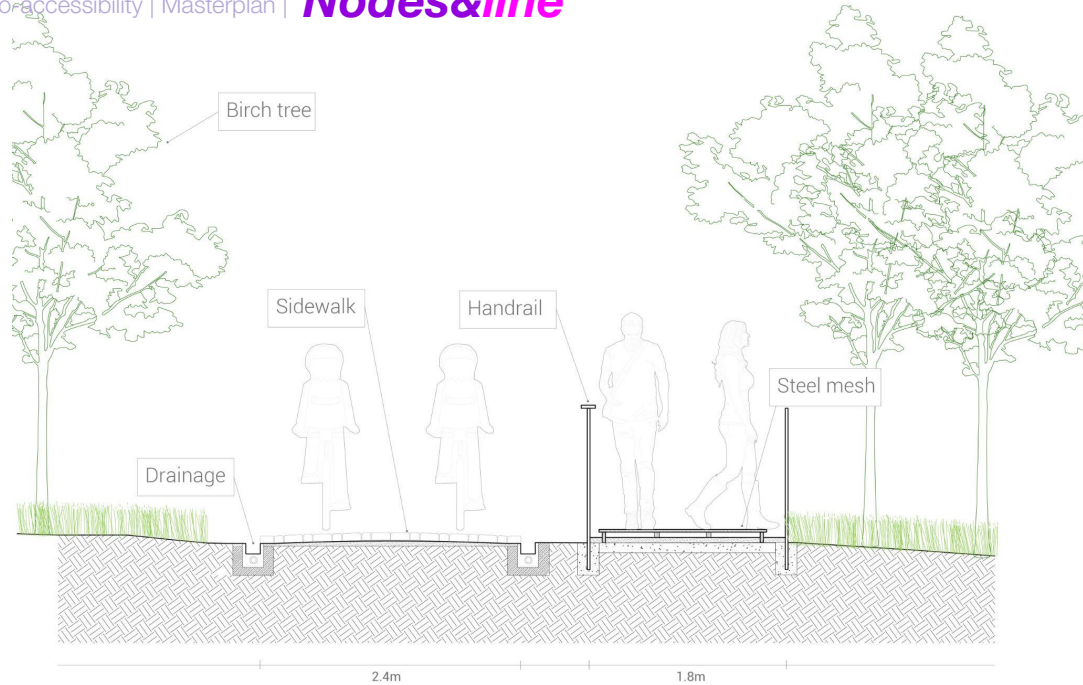




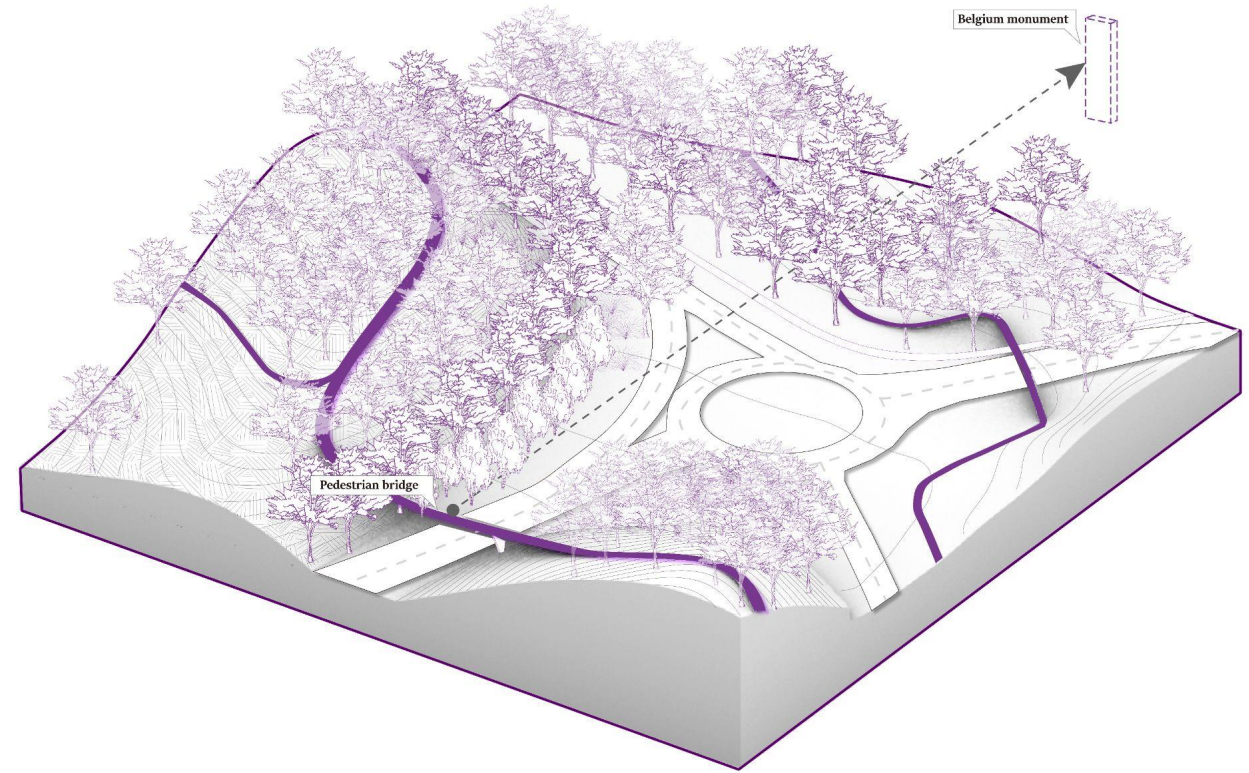
Line02- Steel mesh as a repeated element(pavement)



Line02- Steel mesh as a repeated element(pavement)

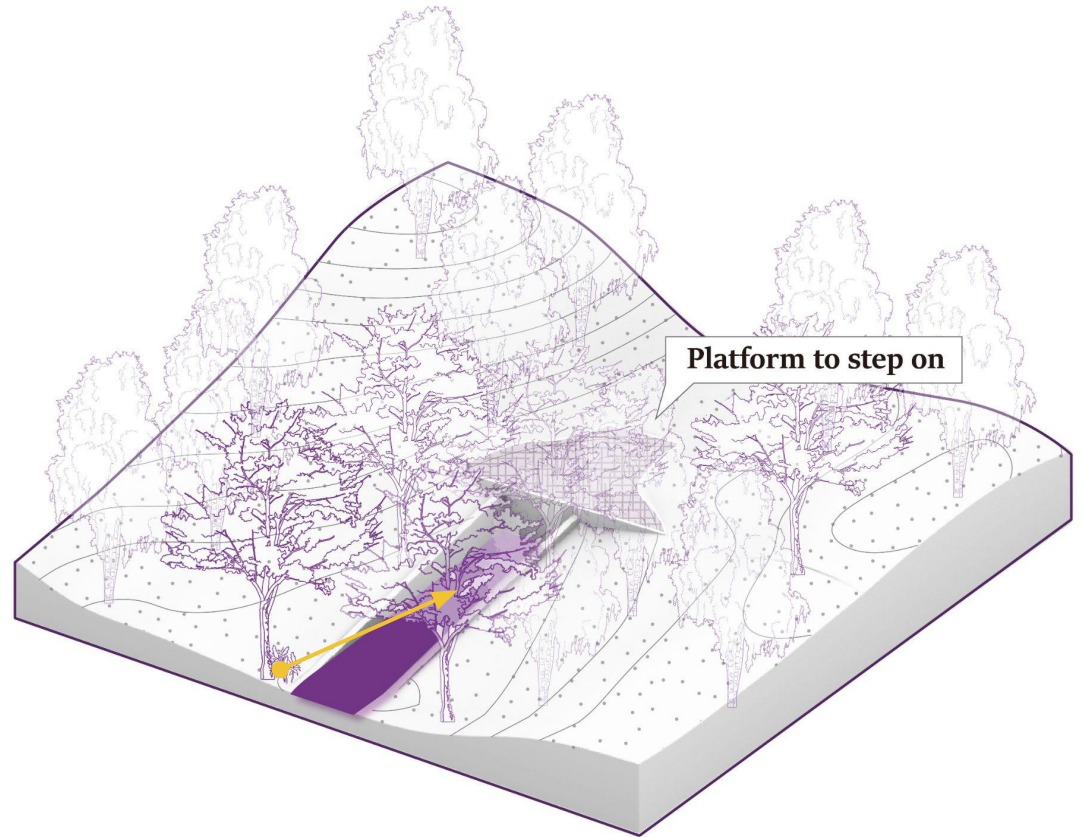
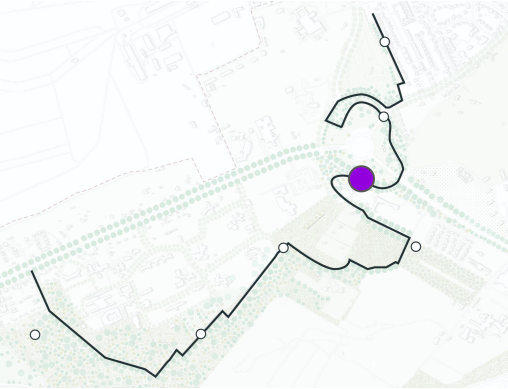


Node02- Pedestrian bridge to view the Belgium monument

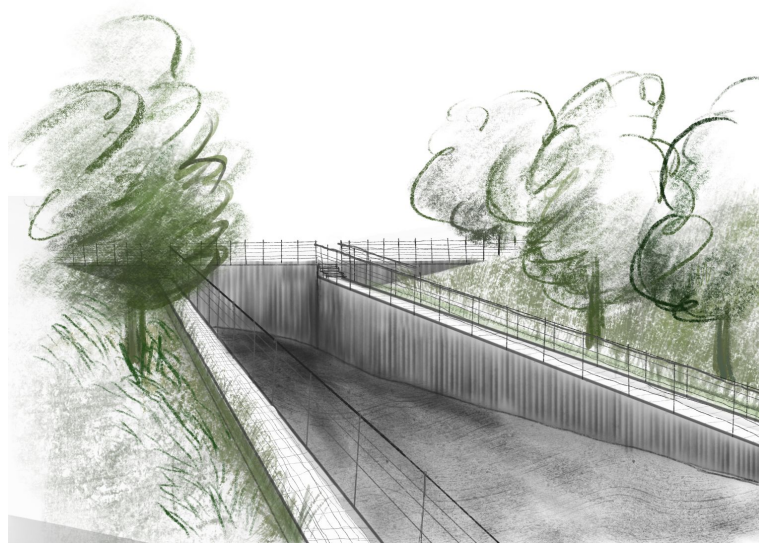
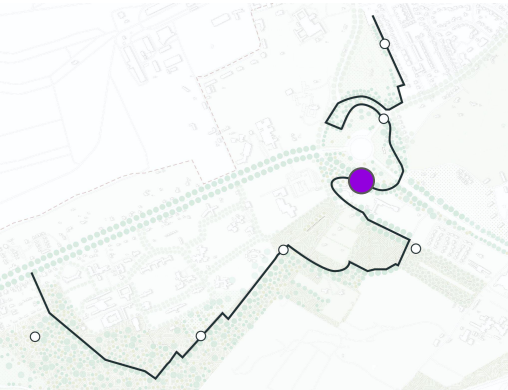




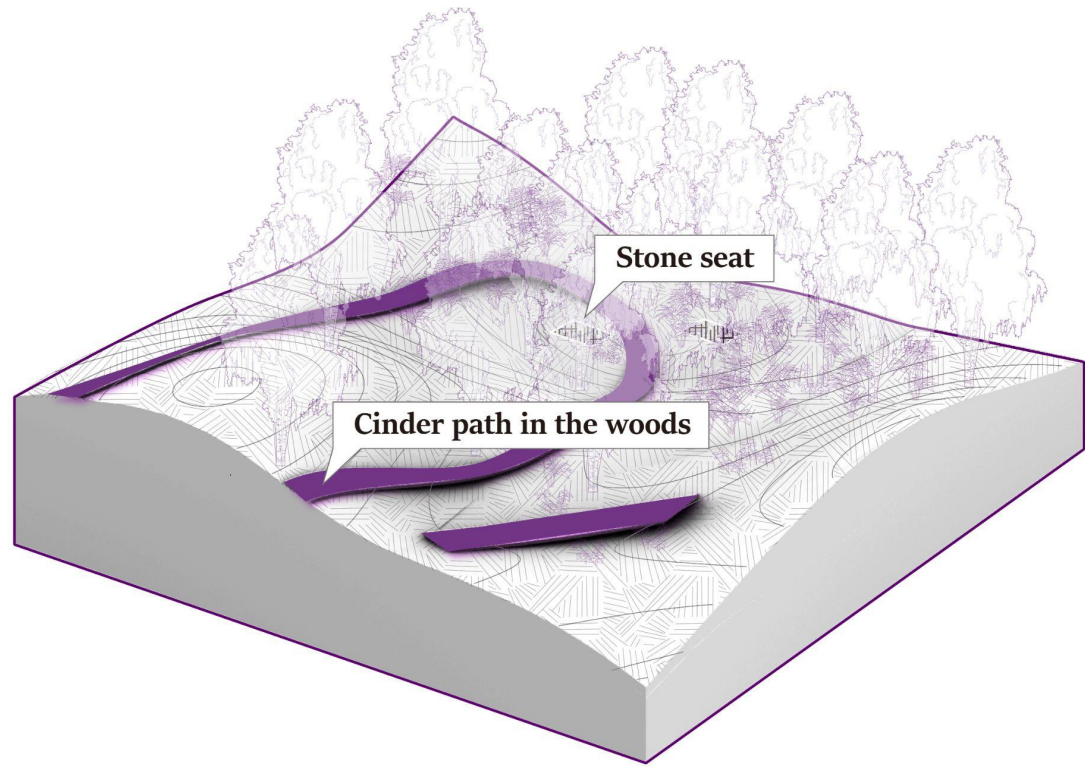
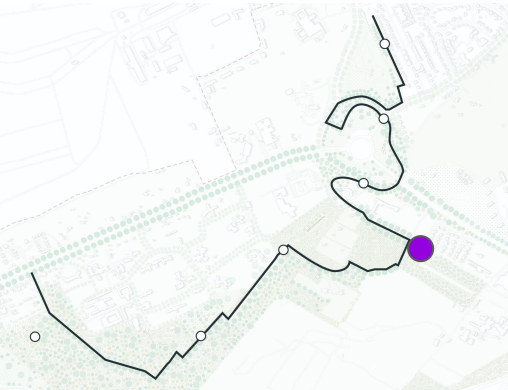
Node03- Tunnel in the woods



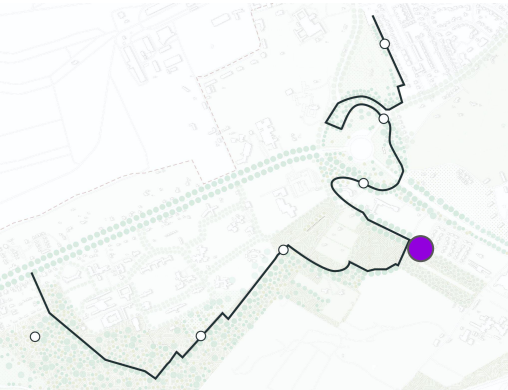
Node03- Tunnel in the woods



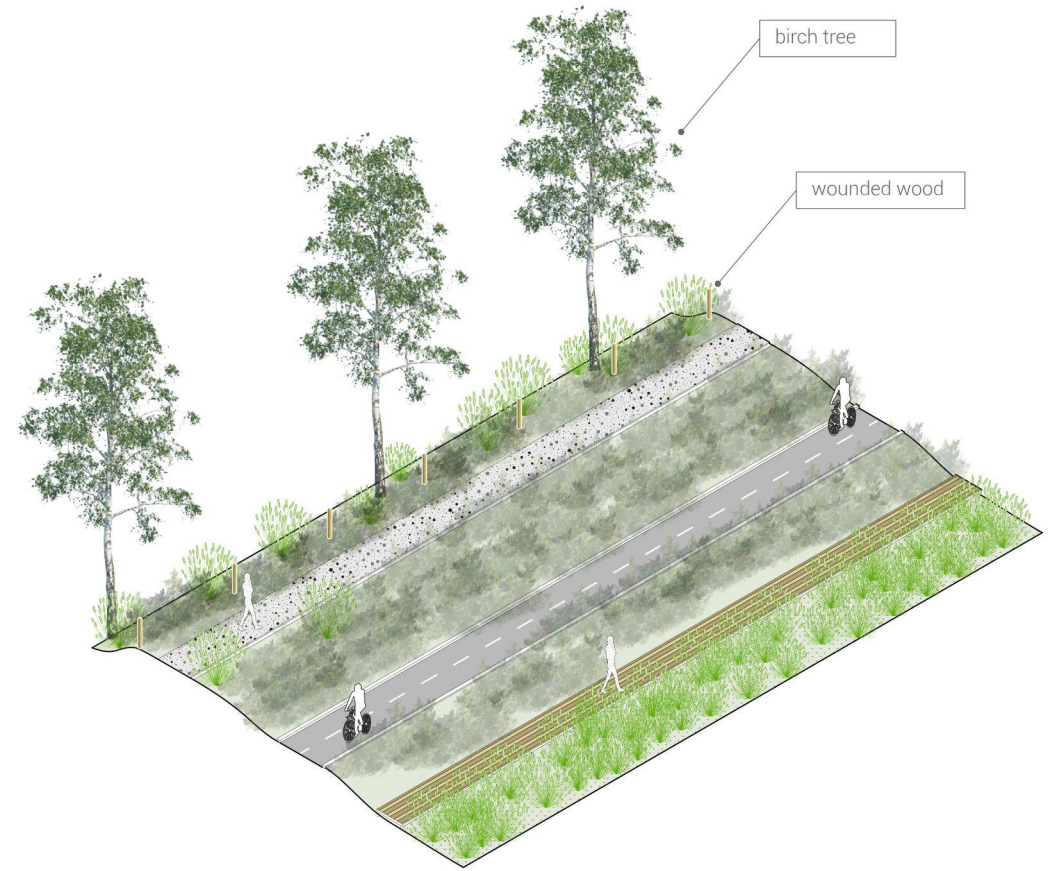
Node04- Cinder paths and stone seat in woods



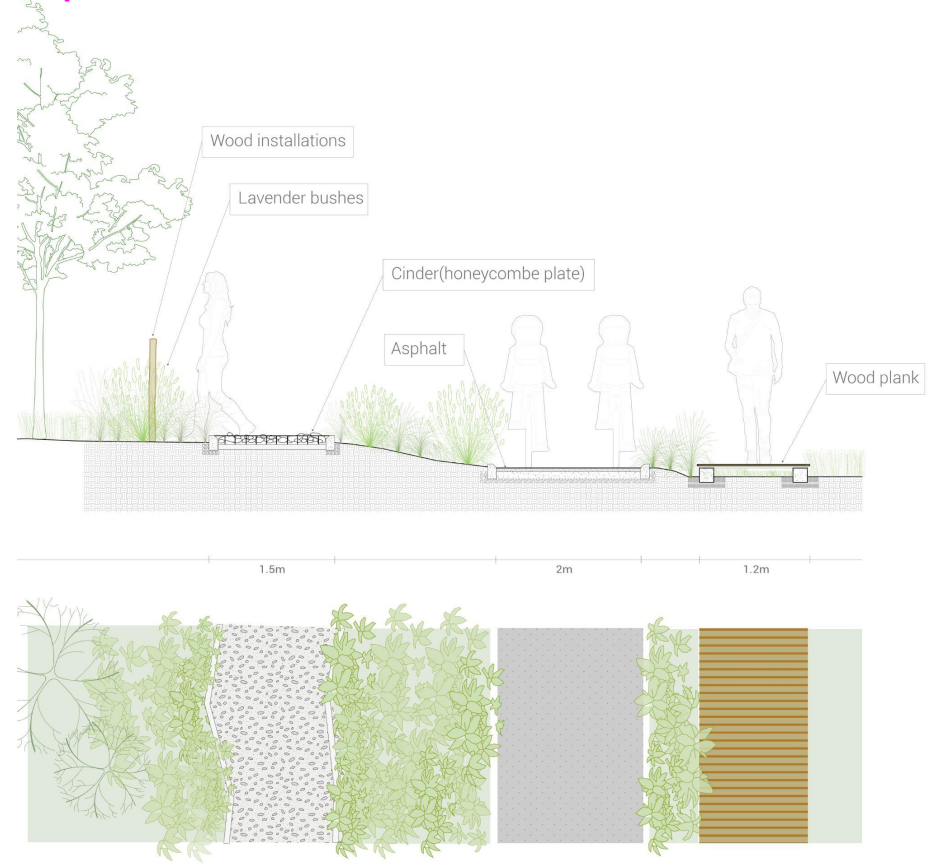
Node04- Cinder paths and stone seat in woods



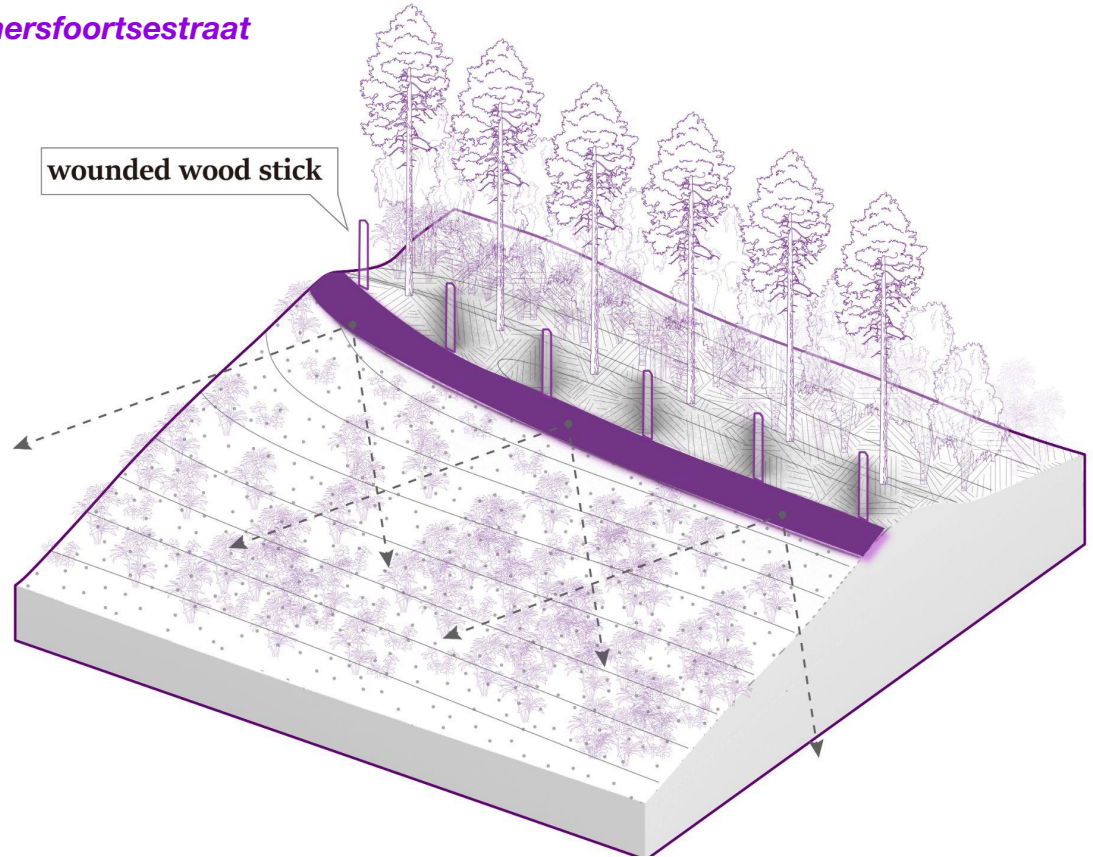
Line03 Gravel - Asphalt - Wooden path



Line03 Gravel - Asphalt - Wooden path

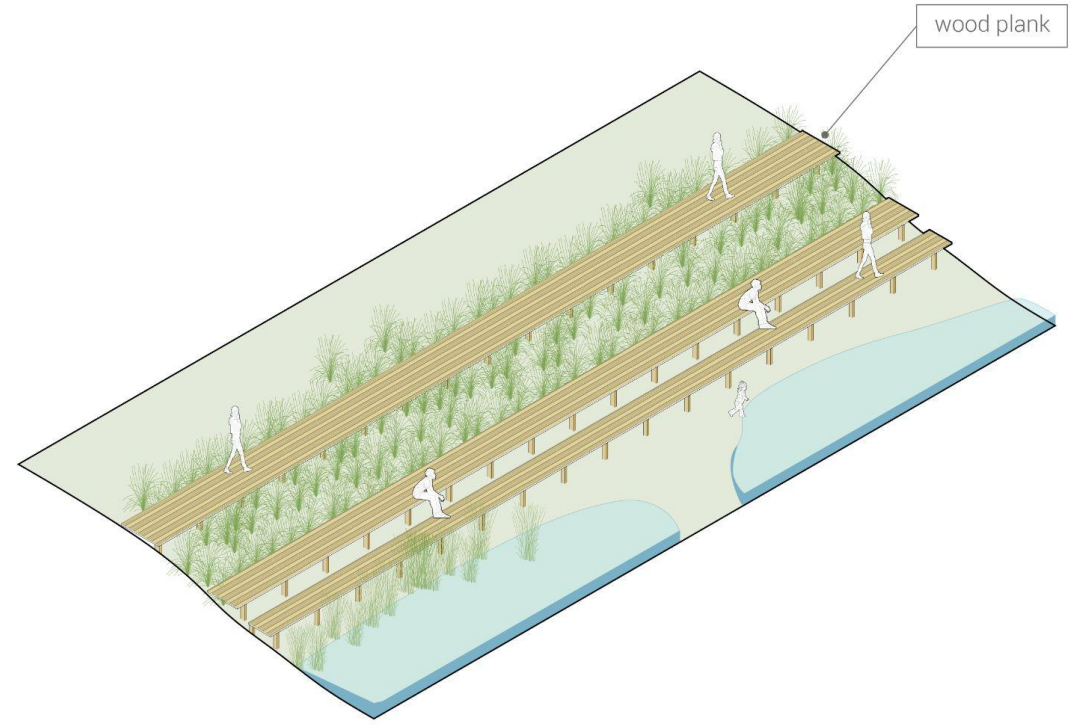


Node05- Lifted path to have an overview of Amersfoortsestraat

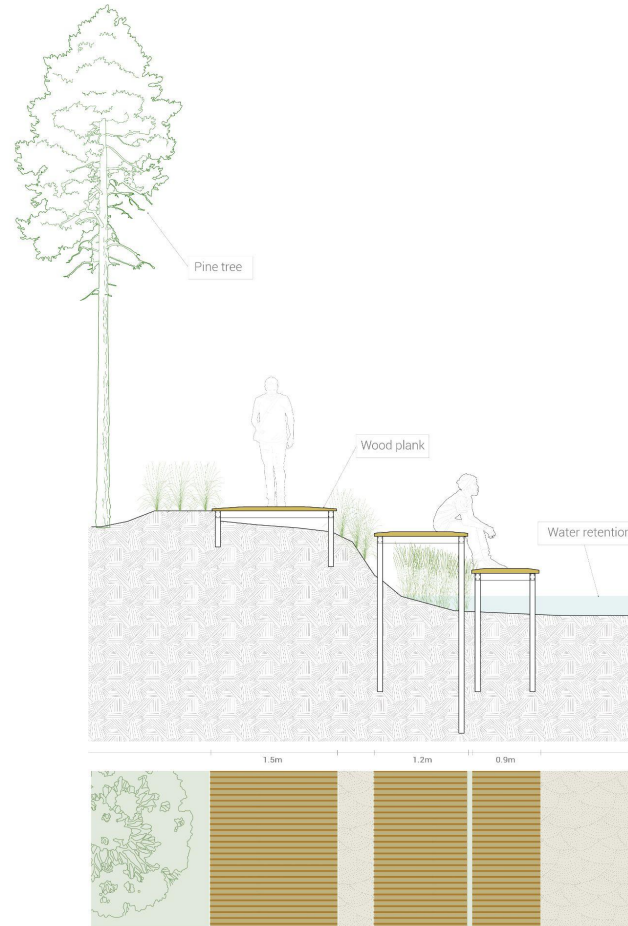




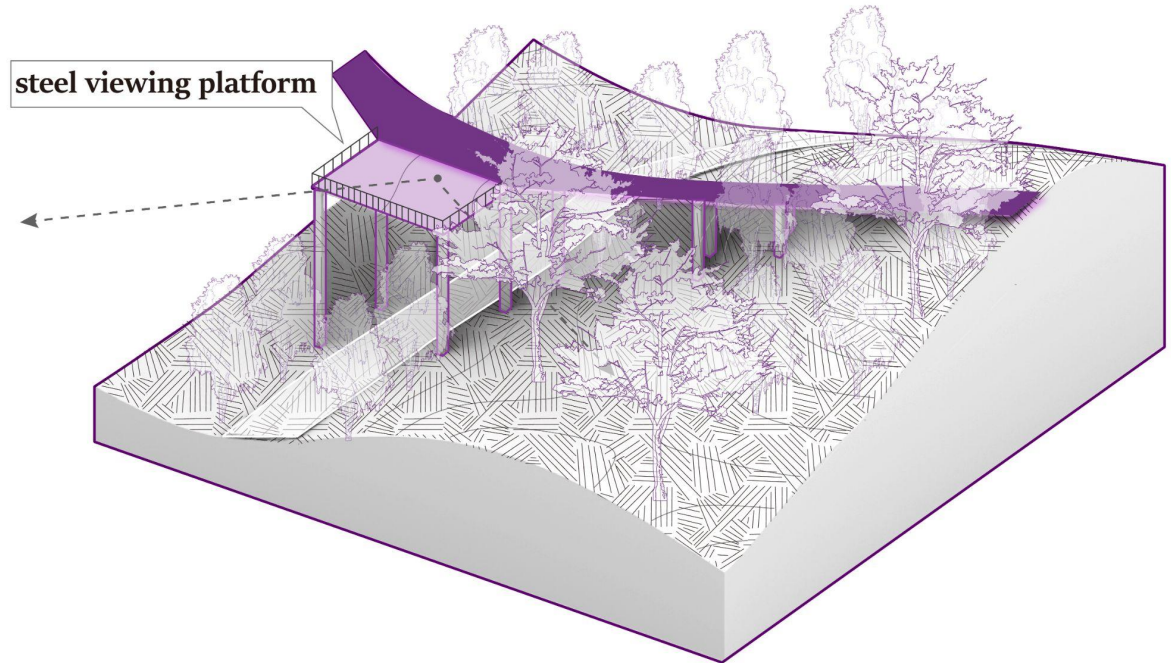
Line04 Lifted wooden path



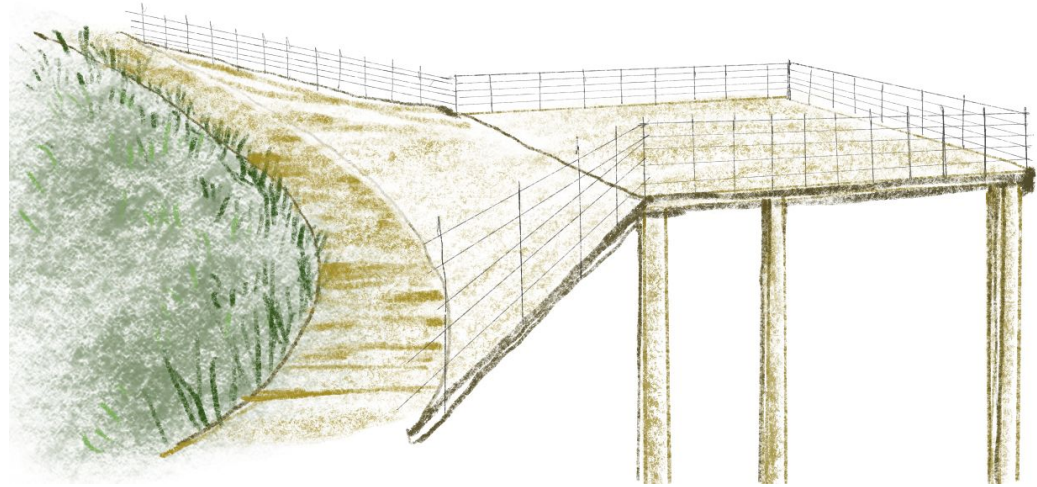
Line04 Lifted wooden path



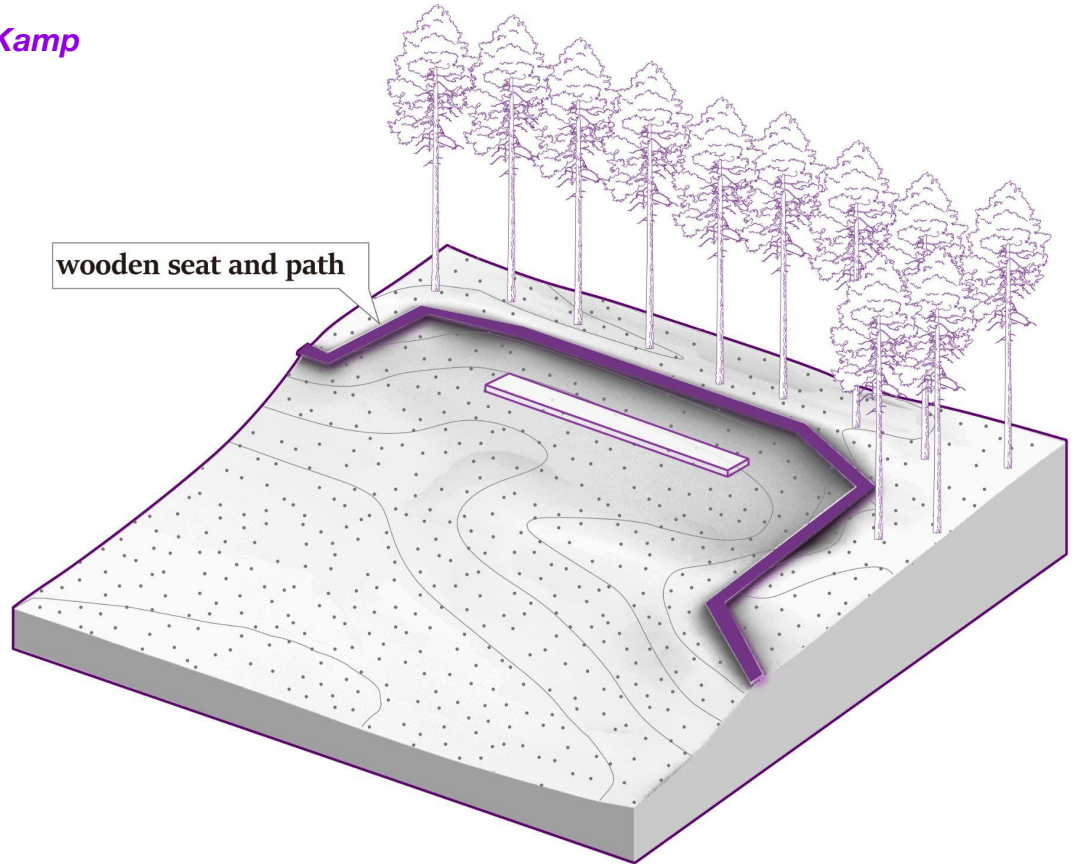
Node06- Viewing platform towards Amersfoortsestraat



Node06- Viewing platform towards Amersfoortsestraat

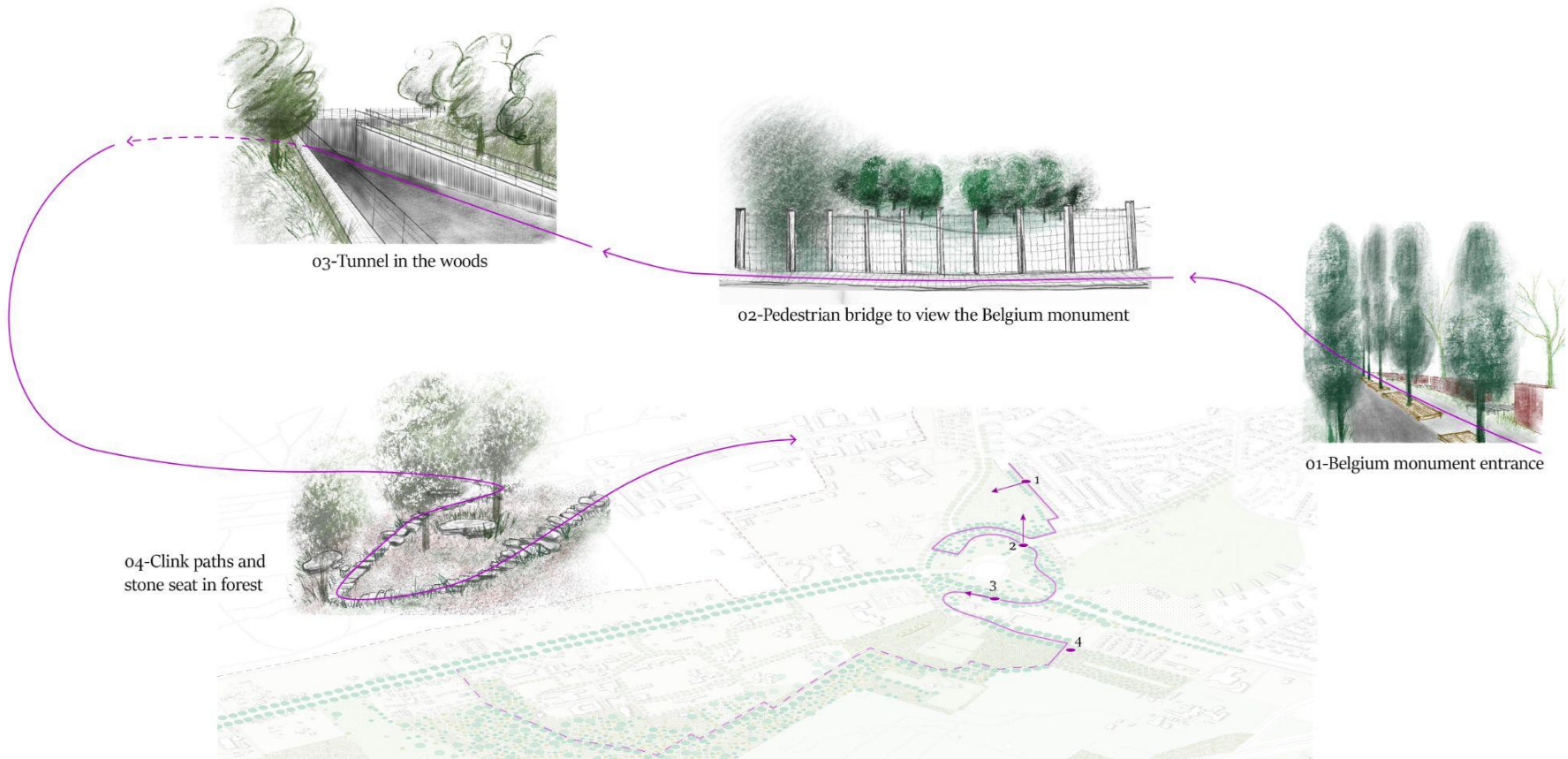


Node07-Wooden path and sandy pitch in Oude Kamp



Nodes&line

Sequential perspectives



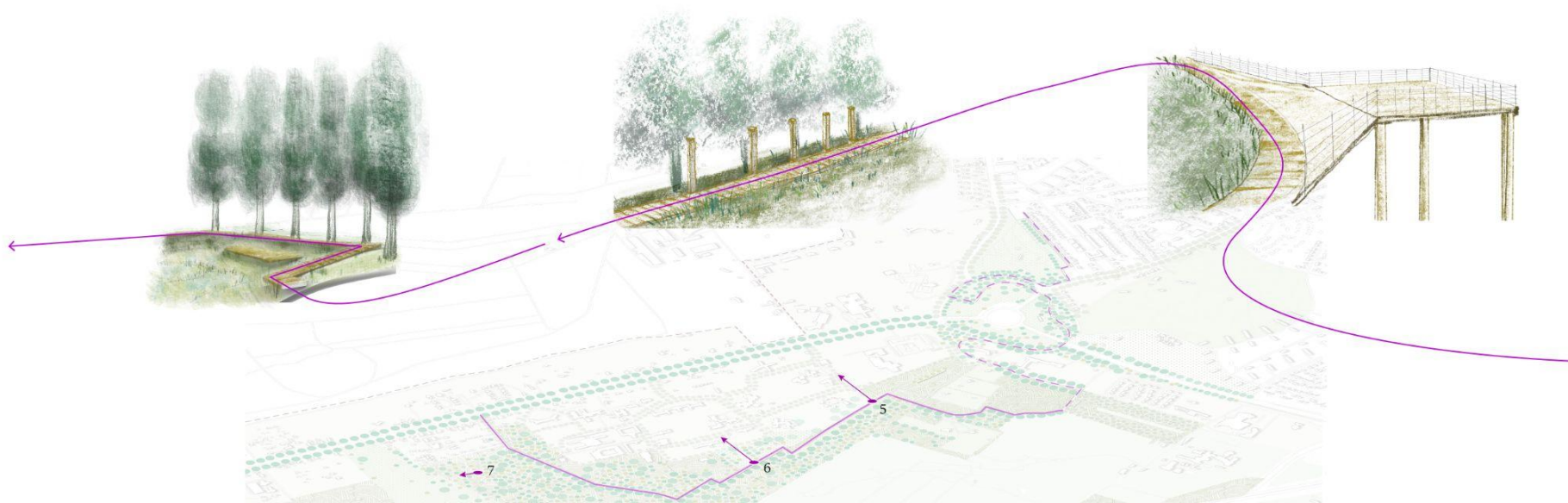
Nodes&line

Sequential perspectives

07-Wooden path and sandy pitch in Oude Kamp

06-Lifted path to have an overview of Amersfoortsestraat

05-Viewing platform towards Amersfoortsestraat



REFLECTION

Research and design

Interwoven process of defining and specifying

Challenges during the process

Same war - different culture perspectives - different experiences

Reflection about my role

As a designer and a participant

As a landscaper and an urbanist

THANK YOU !