

COMPLEX PROJECTS  
**ON TRACK**

BODIES & BUILDING BERLIN

Yasmine Ouibrahim

Drawing set

**2024**

**COMPLEX PROJECTS**  
**Bodies & Building Berlin**  
**AR3CP010**

**student**

Yasmine Ouibrahim

**chair**

Kees Kaan

**lab coordinator**

Hrvoje Smidihen

**tutors**

Benjamin Groothuijse

Jan van de Voort

Maruli Heijman

**email**

infocpstudios@gmail.com

**Instagram**

<https://www.instagram.com/cp.complexprojects/>

**website**

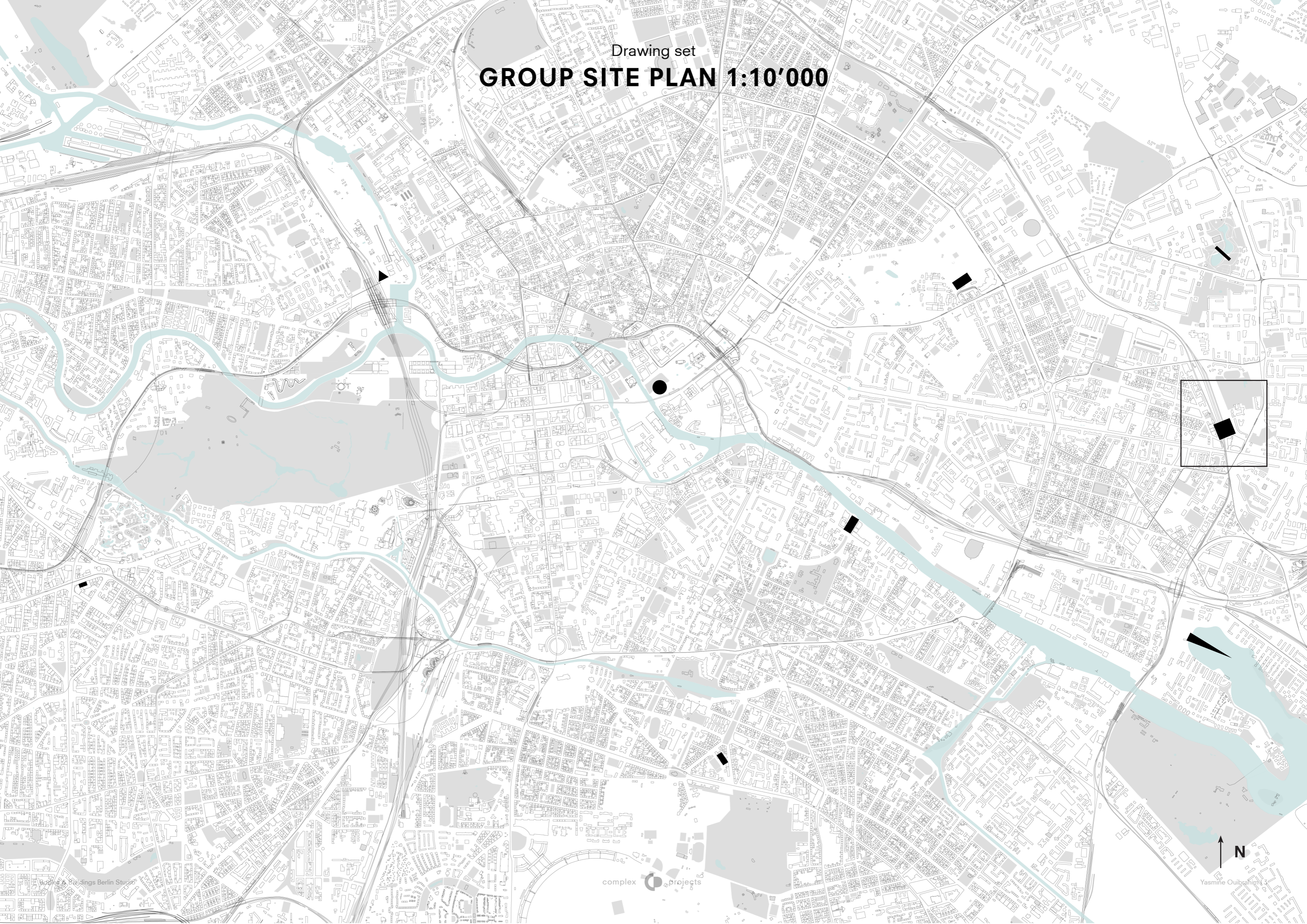
<https://www.tudelft.nl/bk/over-faculteit/afdelingen/architecture/organisatie/disciplines/complex-projects/>

**facebook**

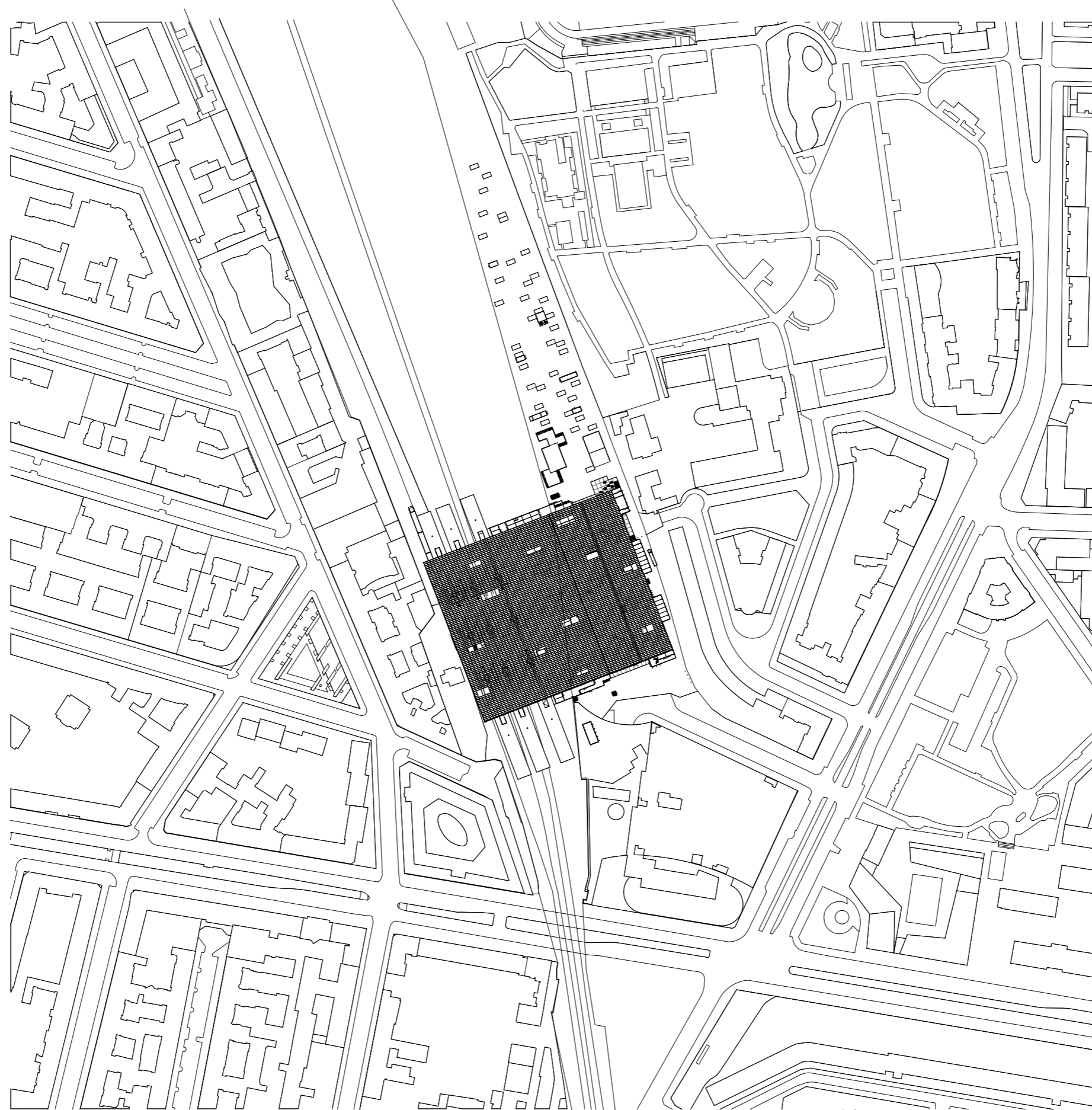
[https://www.facebook.com/CP\\_Complex-Projects-422914291241447](https://www.facebook.com/CP_Complex-Projects-422914291241447)

Drawing set

# GROUP SITE PLAN 1:10'000

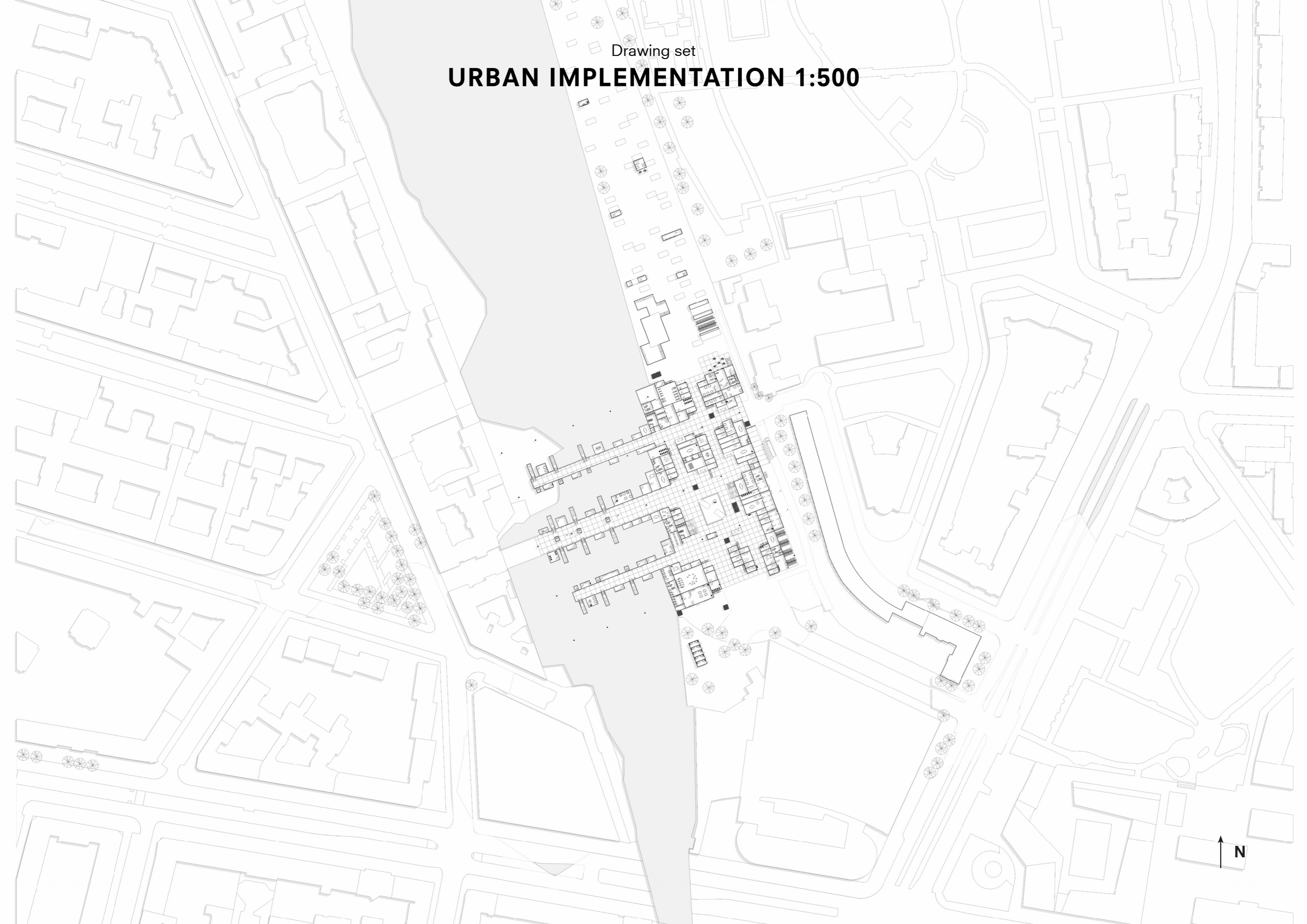


Drawing set  
**SITE PLAN 1:1'000**



Drawing set

# URBAN IMPLEMENTATION 1:500



N

Drawing set

# GROUND FLOOR 1:200

- 1. Exercise and recreate:
  - Skate
  - Hang out
  - Graffiti
  - Sports class
  - Dance studio
  - Medical space

- 2. Eat and drink:
  - Spati's
  - Curry wurst
  - Biergarten
  - Party

- 3. Debate and collaborate:
  - Event and conference room

- 4. Core area:
  - Ticket sale
  - Travel Information
  - Seating area
  - Services

Exhibitions and performances

- 5. Lactationroom
- 6. Prayerroom
- 7. Lockers

- 8. BOH:
  - Technical space
  - Storage
  - Maintenance

- 9. Emergency shelter

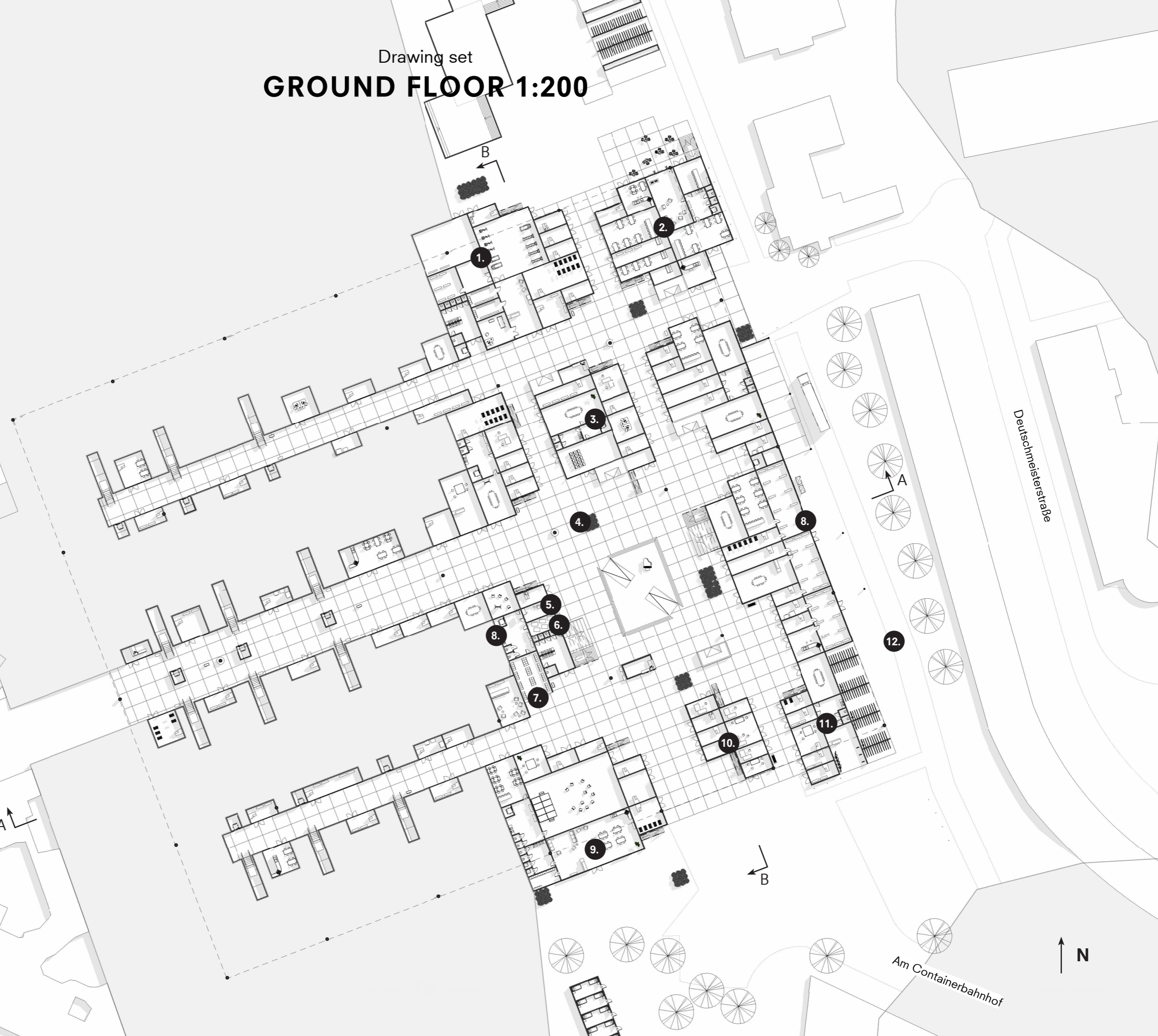
- 10. Makers space:
  - Workshop space
  - Ateliers (art/furniture)

- 11. Collect and repair:
  - Bike repair
  - Bike renting

- 12. Pedestrian and bicycle bypass

Local shops:

- Flowerstand
- Bookshop
- Music shop
- Shop with local delicacy



Deutschmeisterstraße

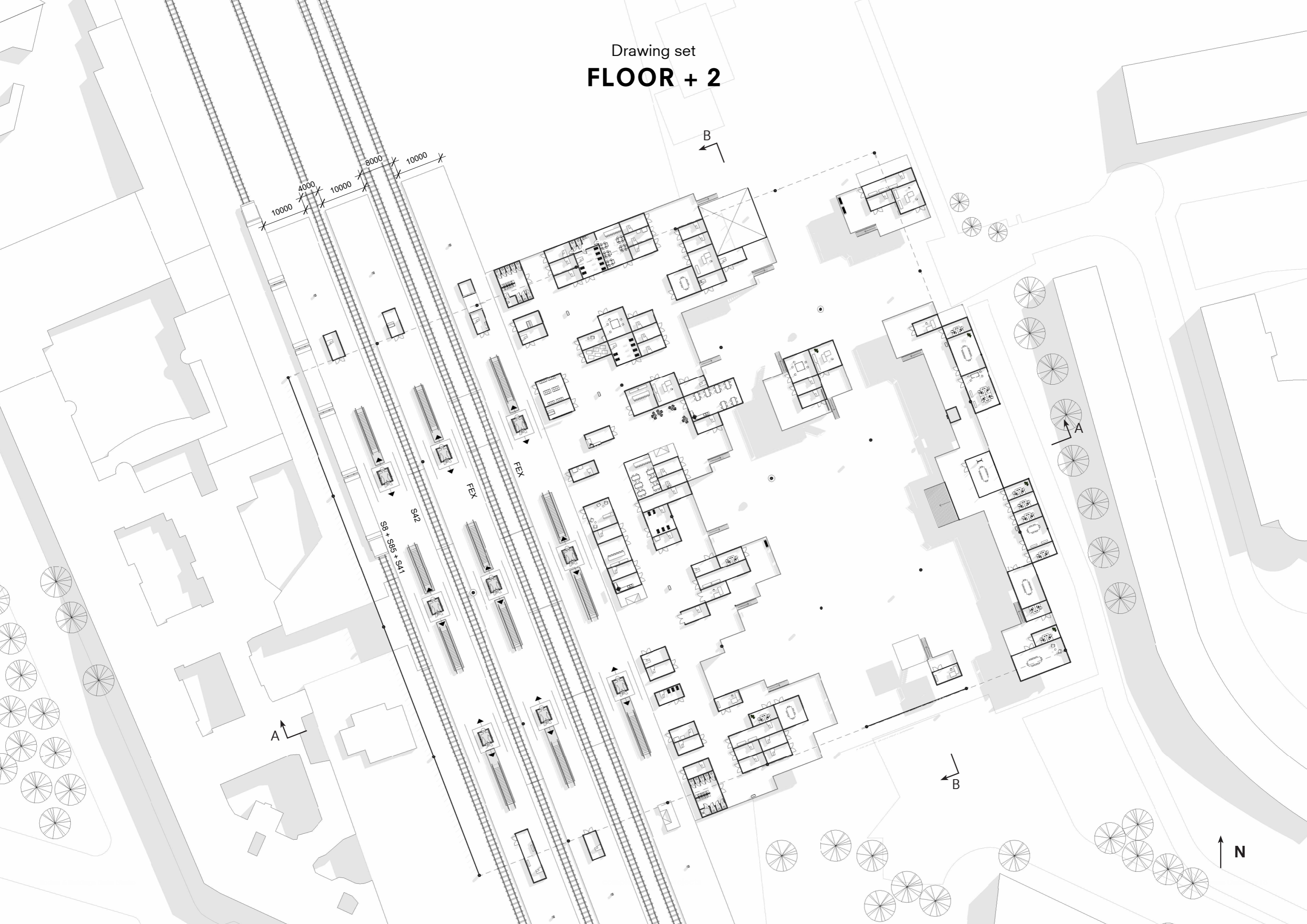
Am Containerbahnhof



Drawing set  
**FLOOR +1**

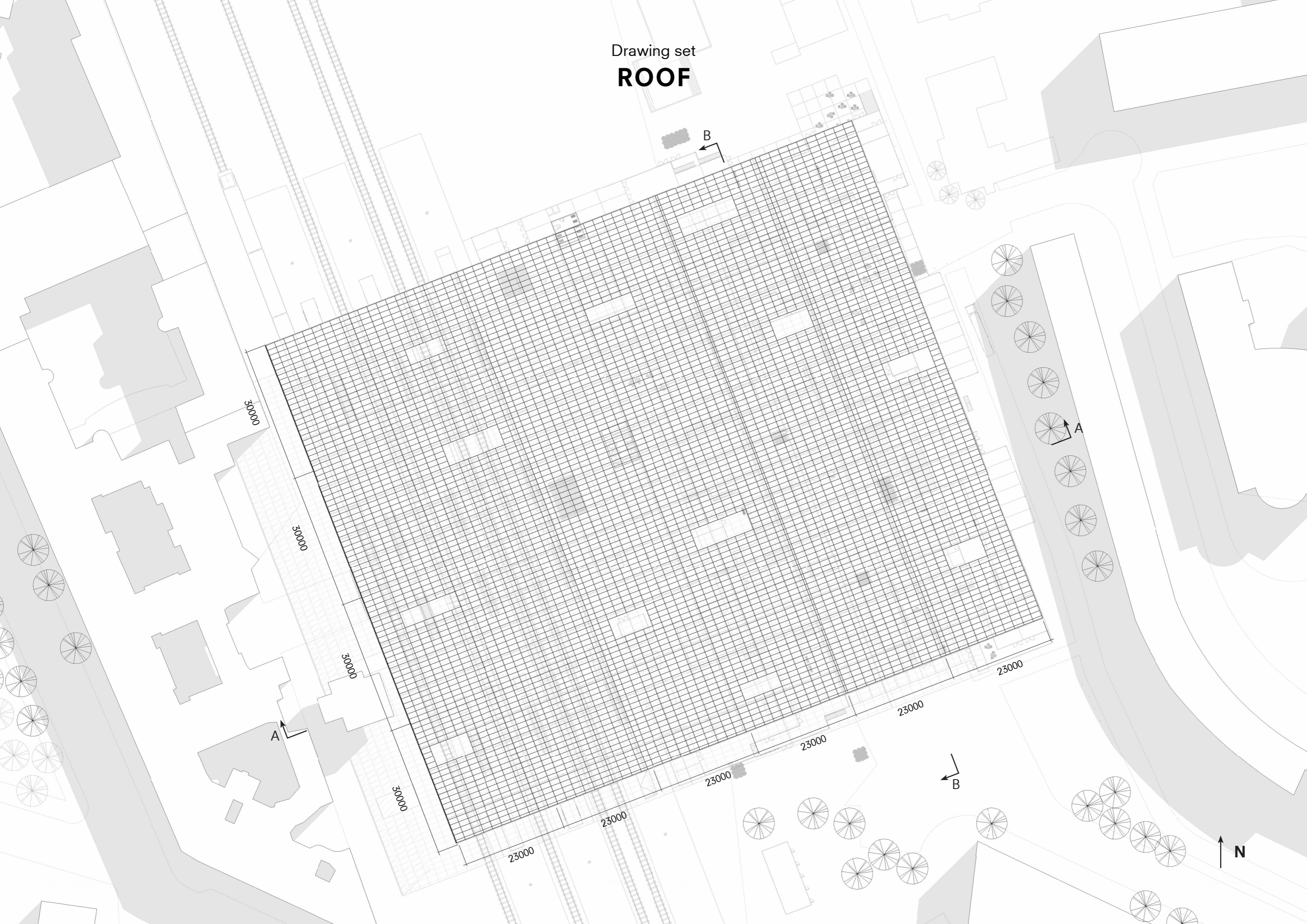


Drawing set  
**FLOOR + 2**

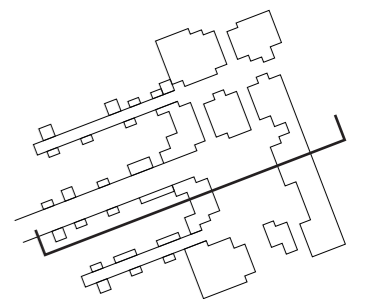
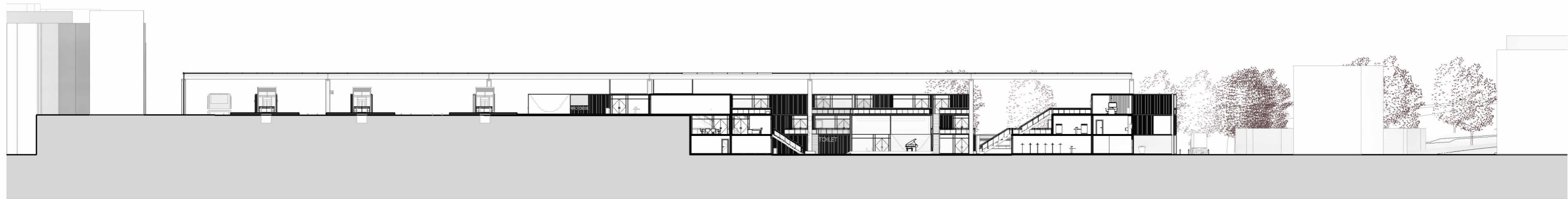




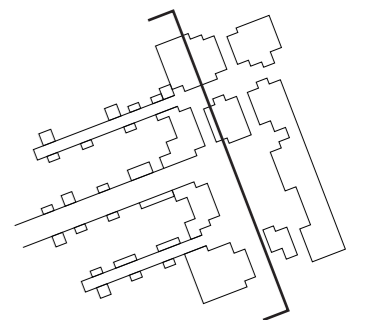
Drawing set  
**ROOF**



Drawing set  
**SECTION AA**



Drawing set  
**SECTION BB**



Drawing set  
**ELEVATIONS**

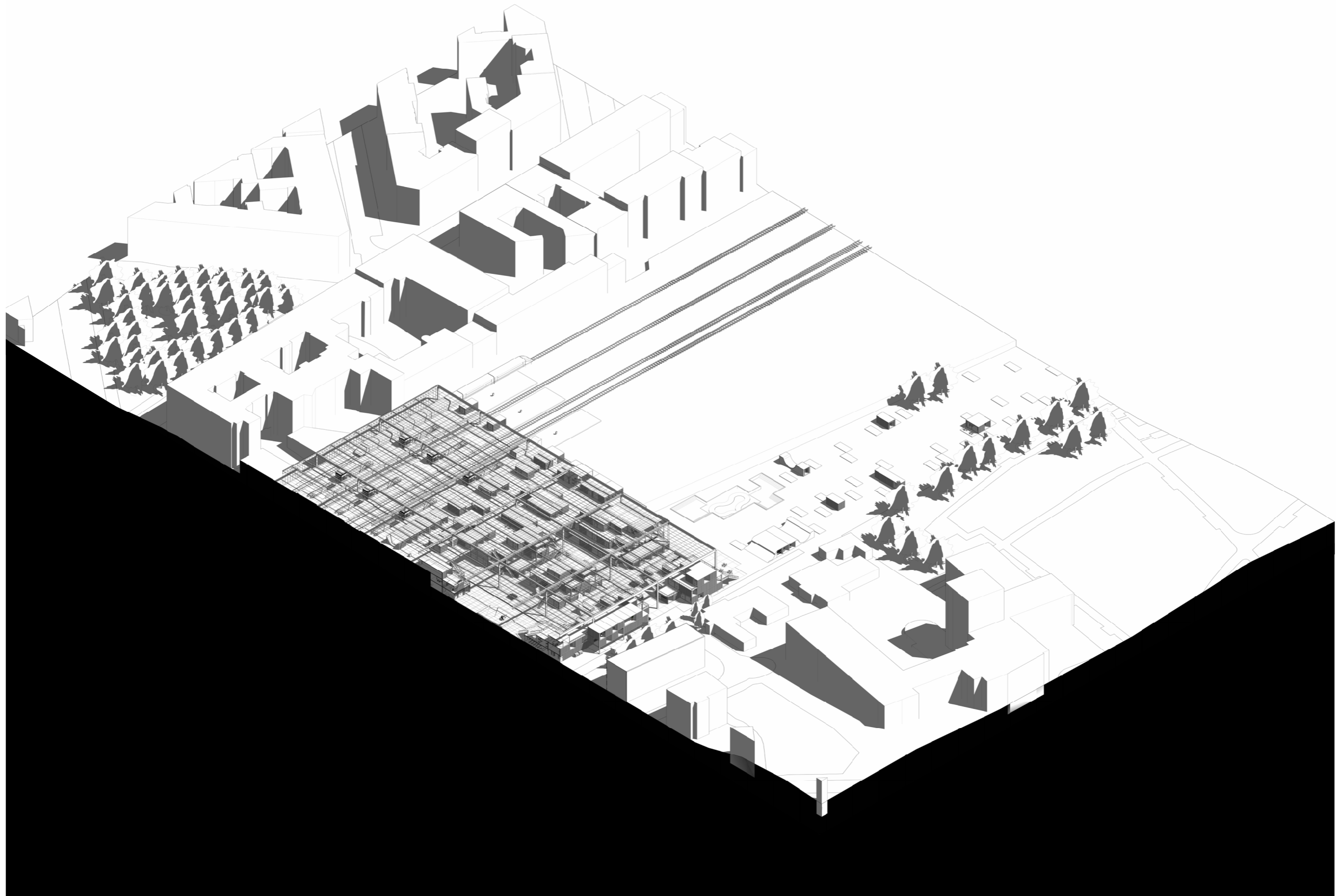


West

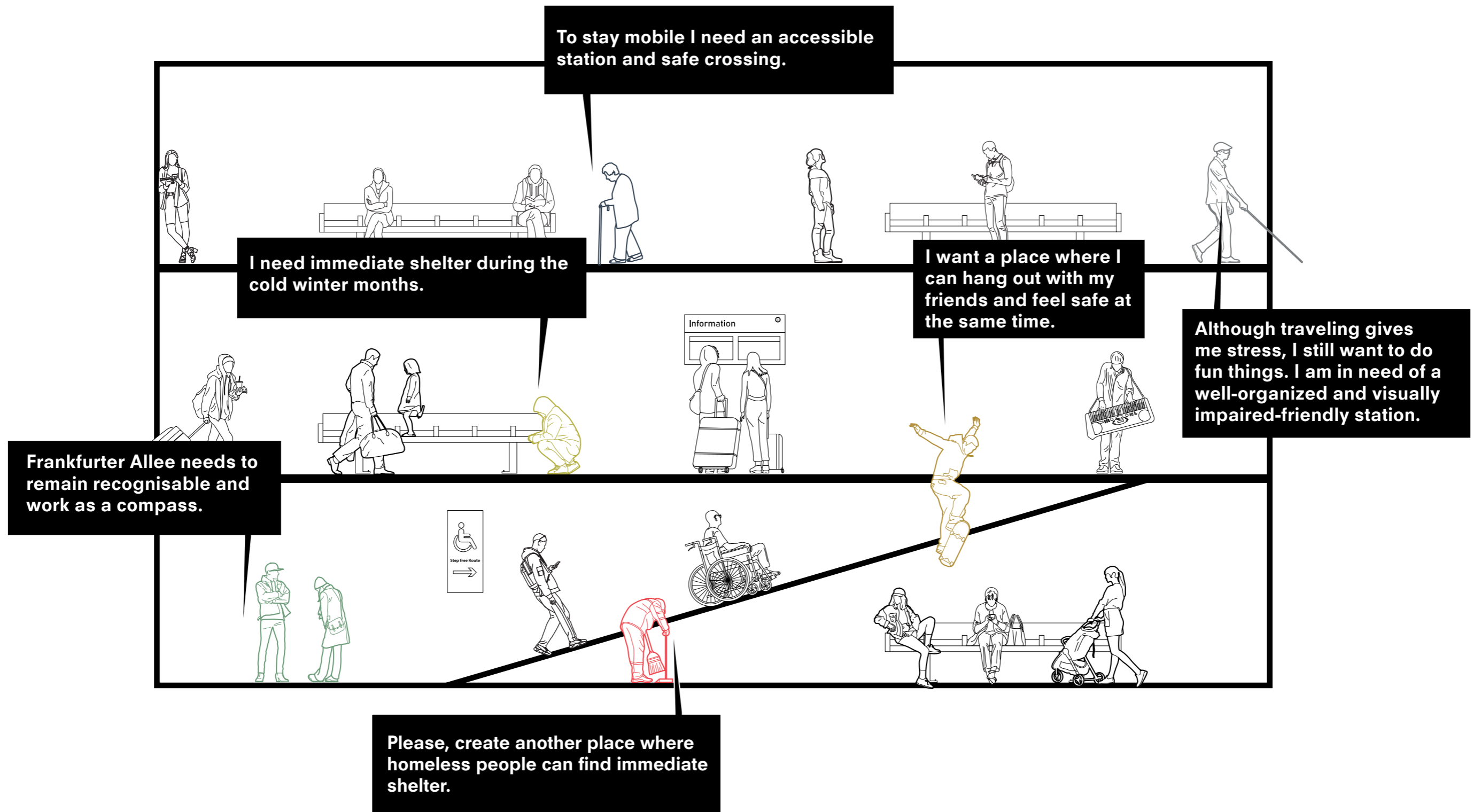


East

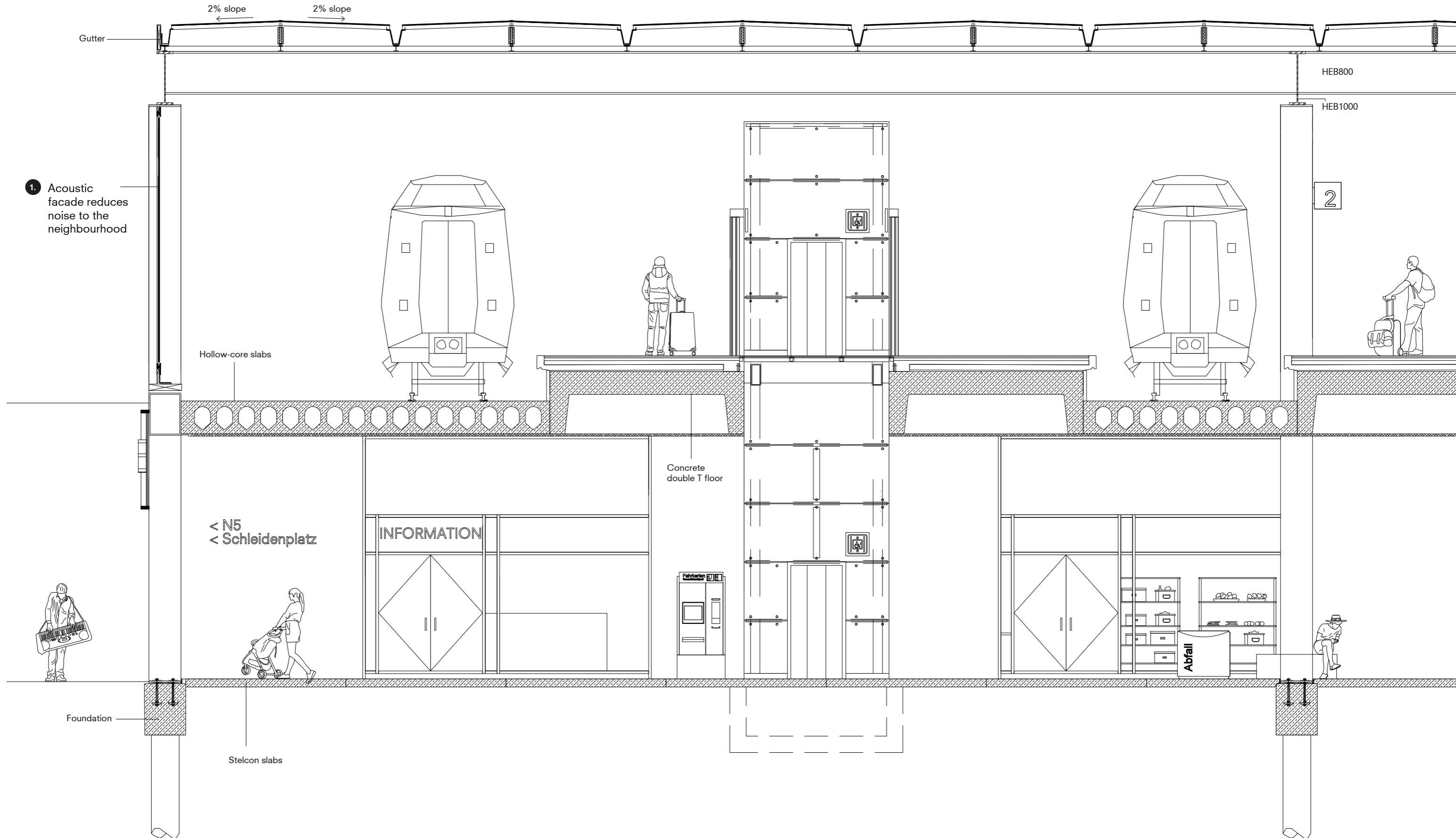
Drawing set  
**KEY DRAWING**



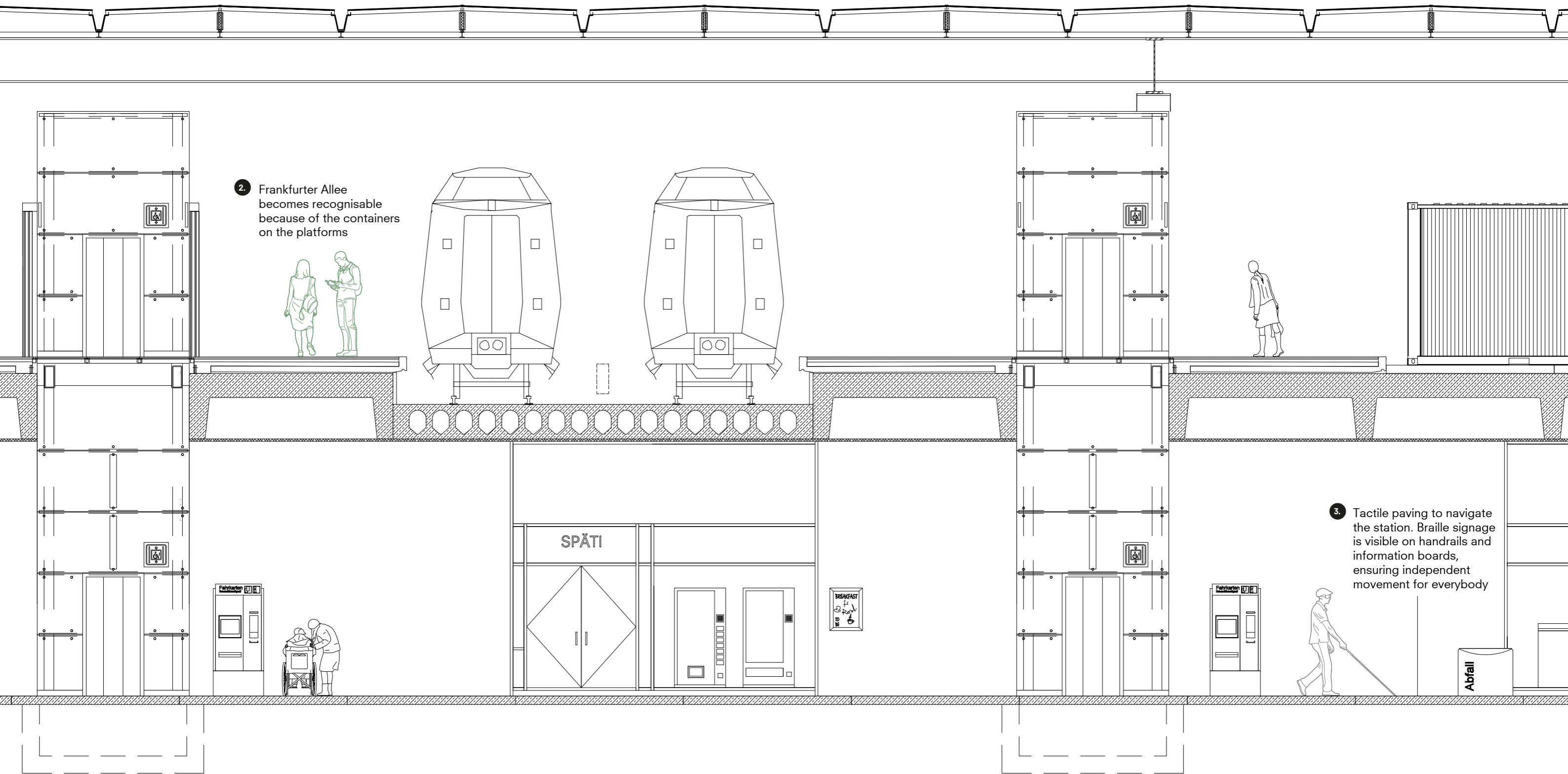
Drawing set  
**PERSONA'S**



Drawing set  
**INTERIOR FRAGMENT 1:50**



Drawing set  
**INTERIOR FRAGMENT 1:50**



2. Frankfurter Allee becomes recognisable because of the containers on the platforms

3. Tactile paving to navigate the station. Braille signage is visible on handrails and information boards, ensuring independent movement for everybody

SPÄTI

Abfall

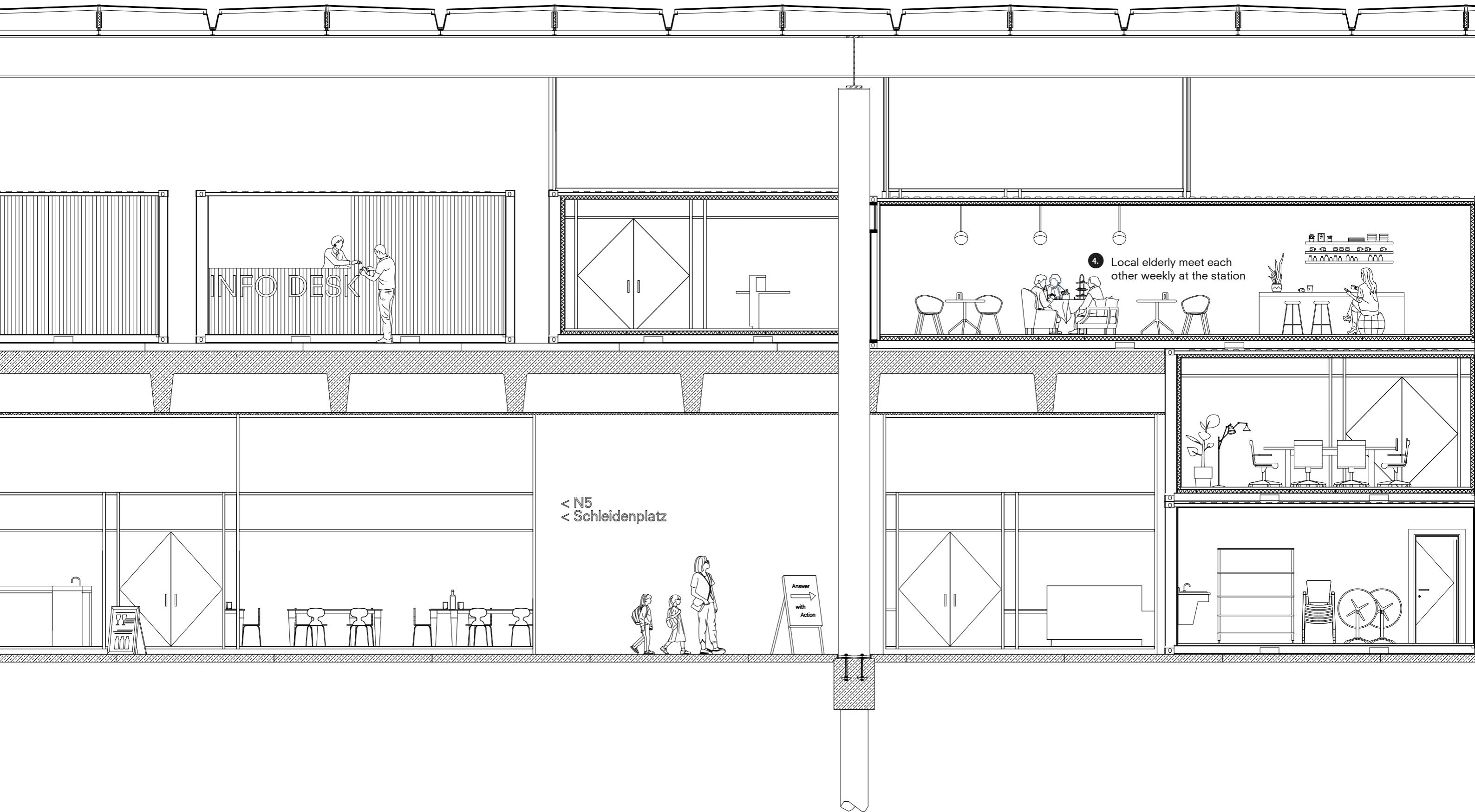
Fahrkartensystem

Fahrkartensystem

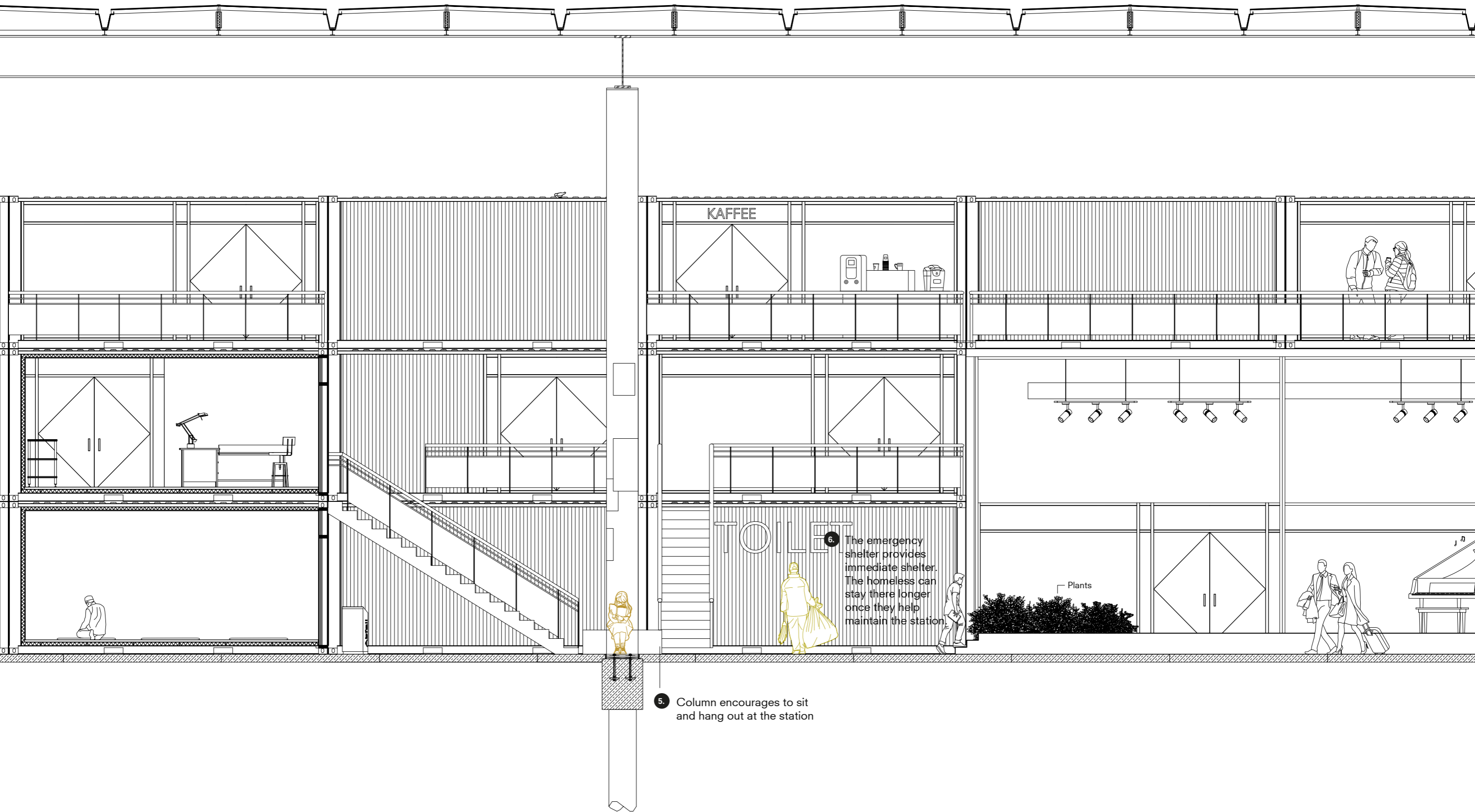
BREAKFAST



Drawing set  
**INTERIOR FRAGMENT 1:50**



Drawing set  
**INTERIOR FRAGMENT 1:50**

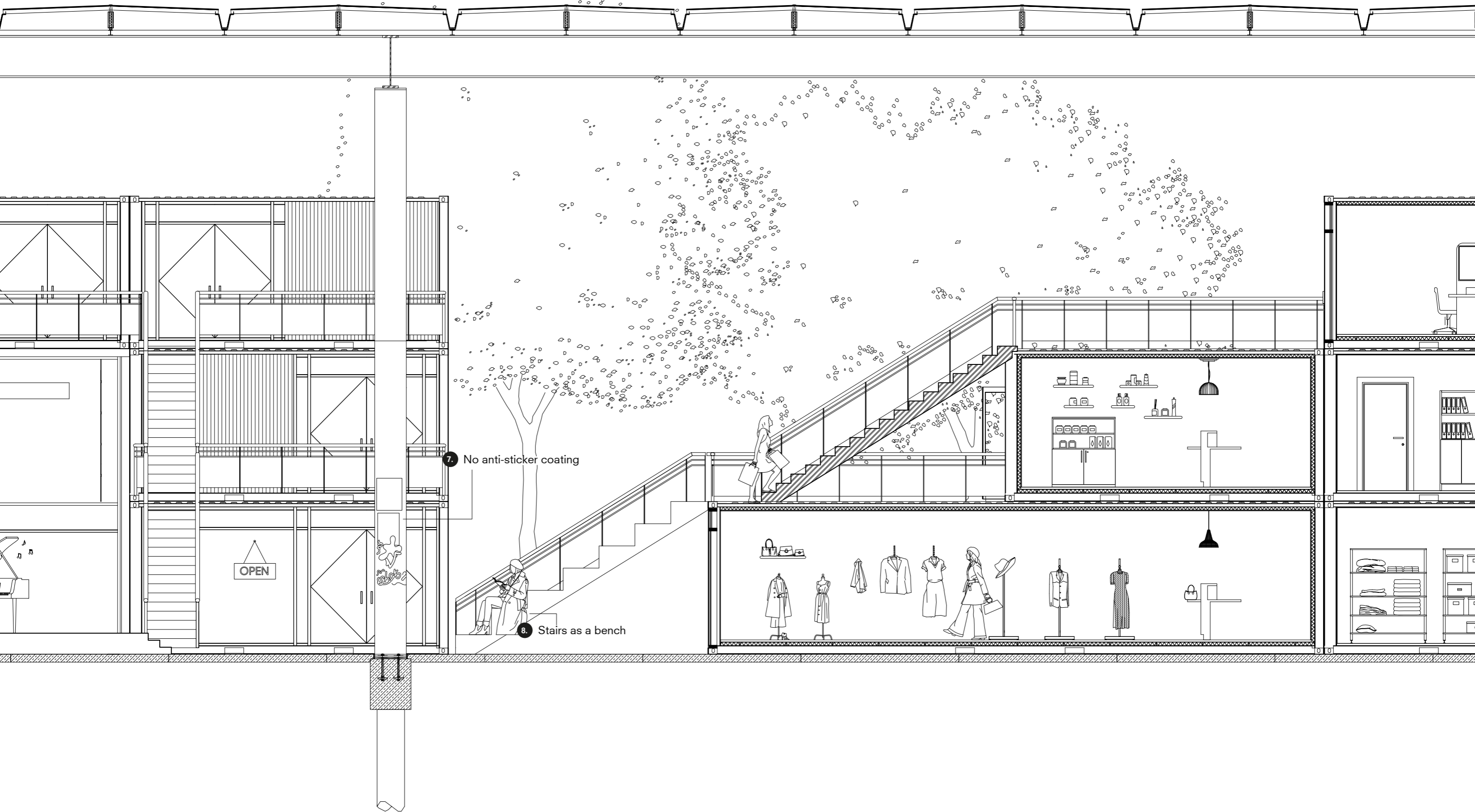


5. Column encourages to sit and hang out at the station

6. The emergency shelter provides immediate shelter. The homeless can stay there longer once they help maintain the station

Plants

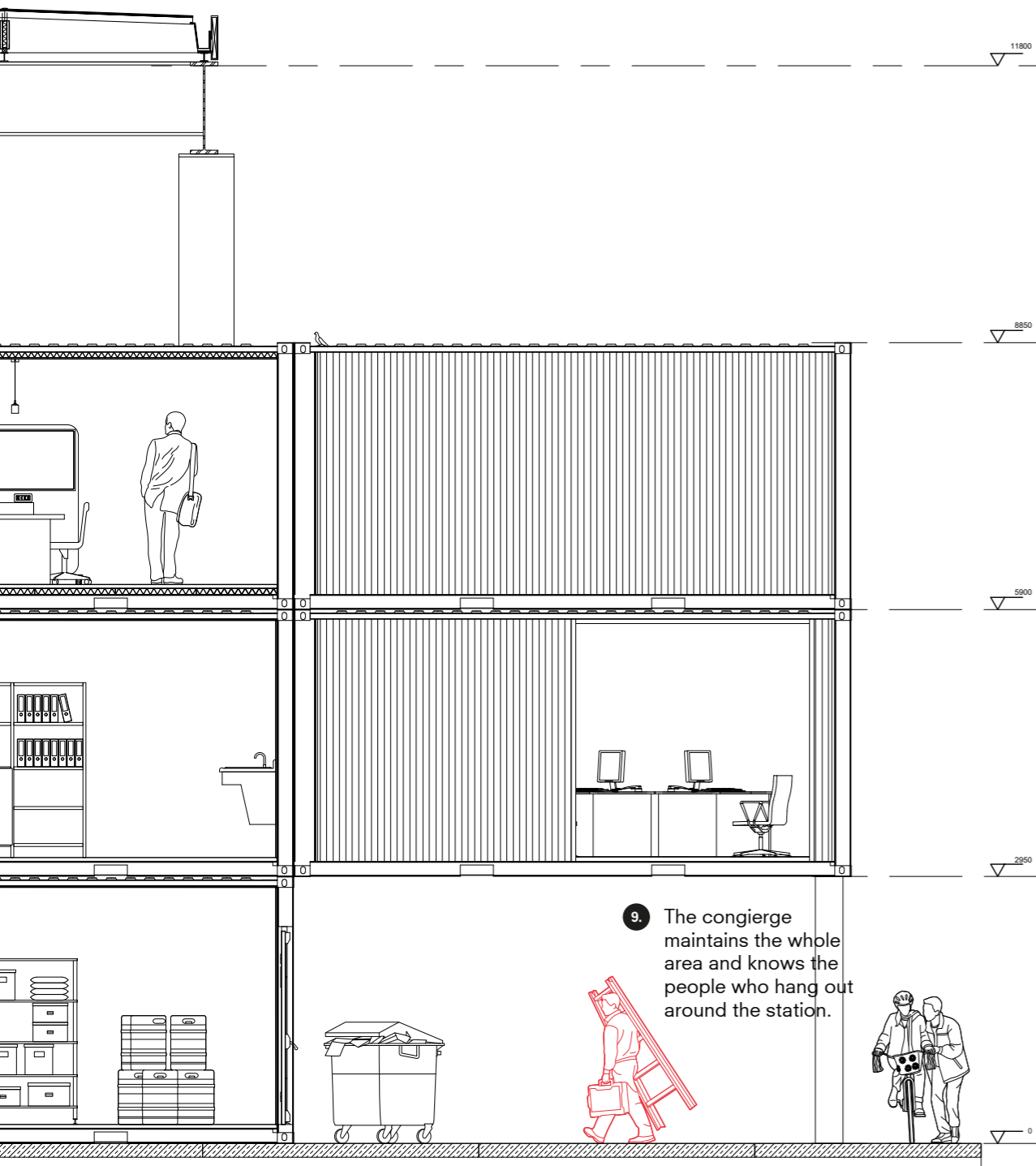
# INTERIOR FRAGMENT 1:50



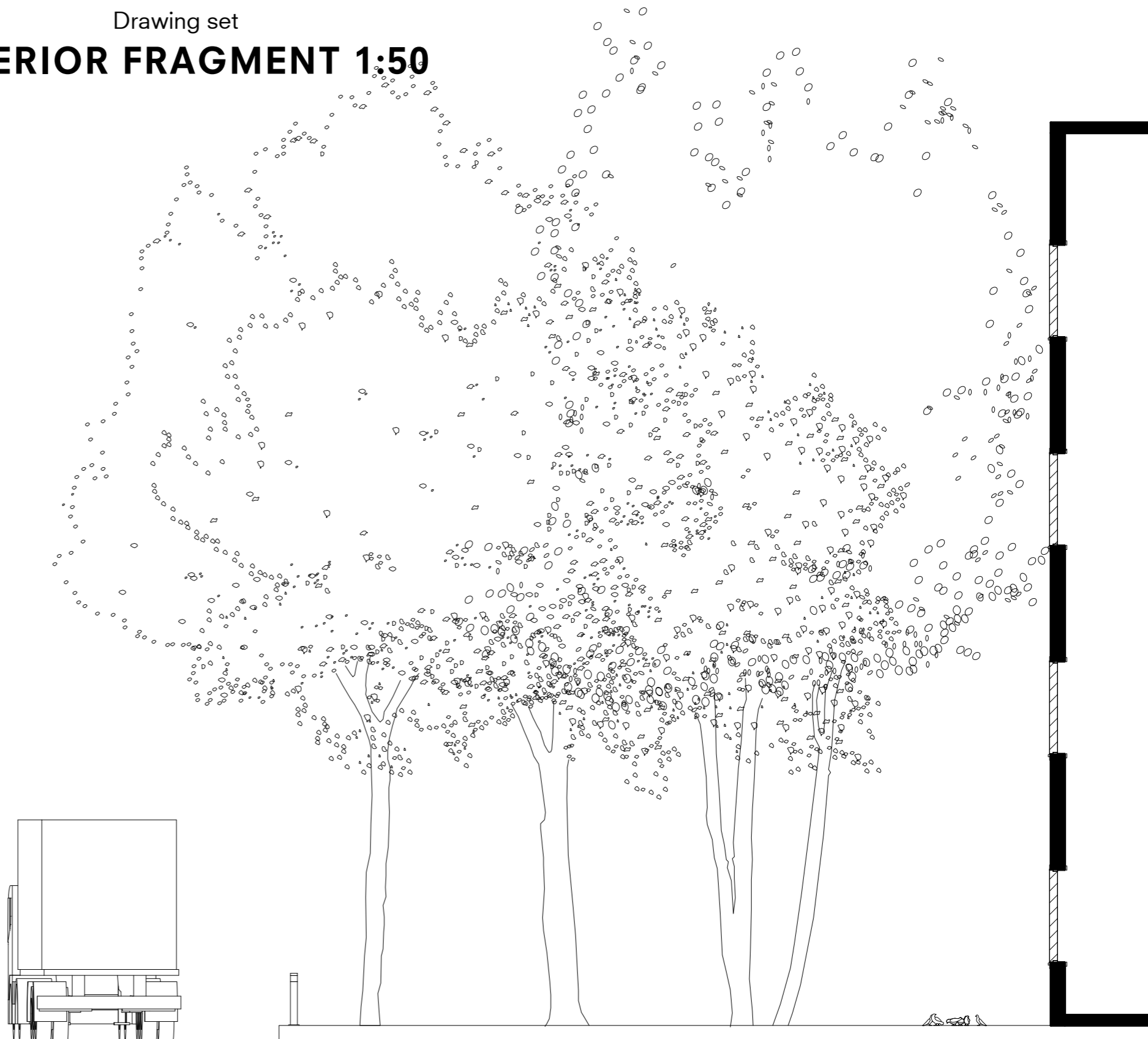
7. No anti-sticker coating

8. Stairs as a bench

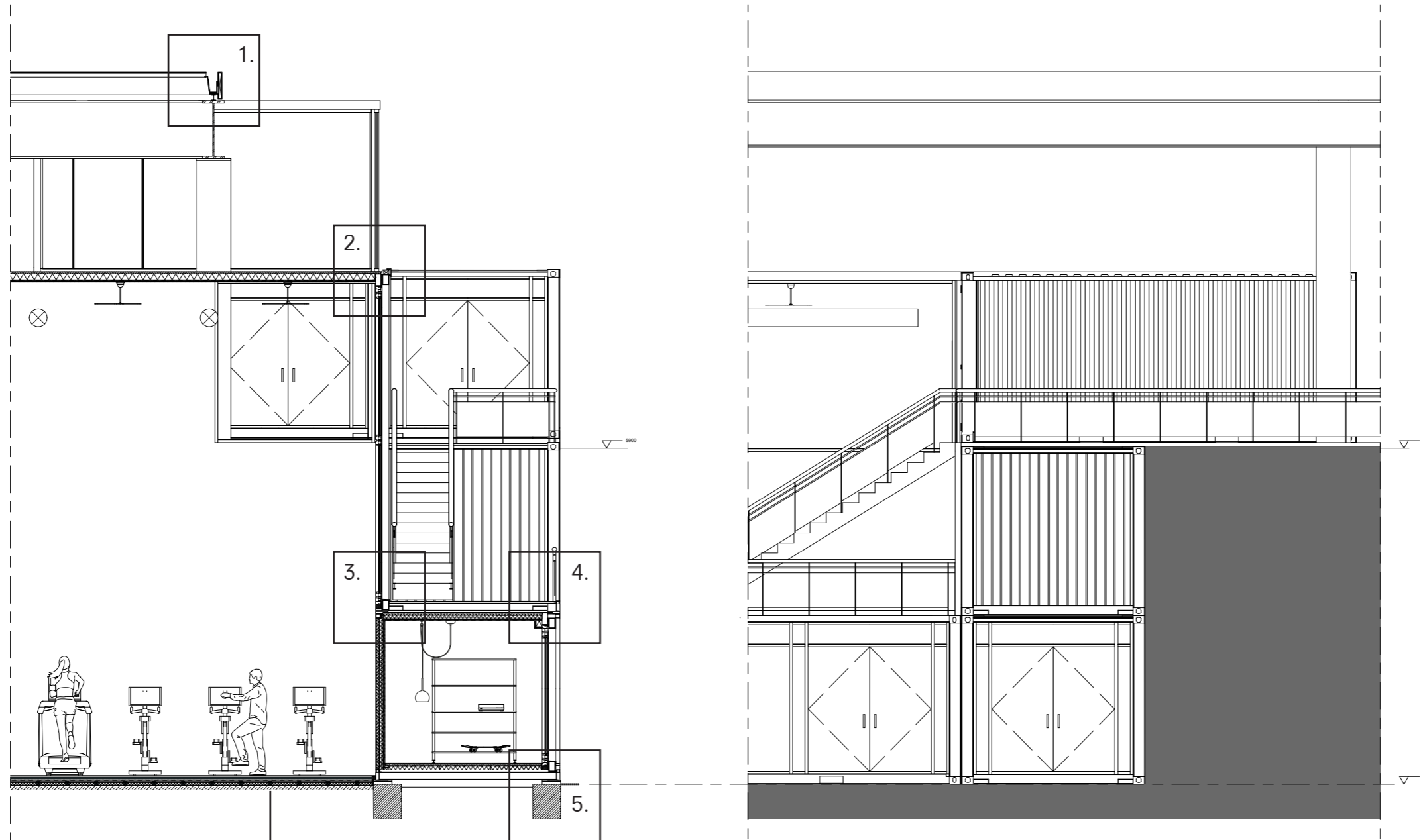
Drawing set  
**INTERIOR FRAGMENT 1:50**



9. The concierge maintains the whole area and knows the people who hang out around the station.



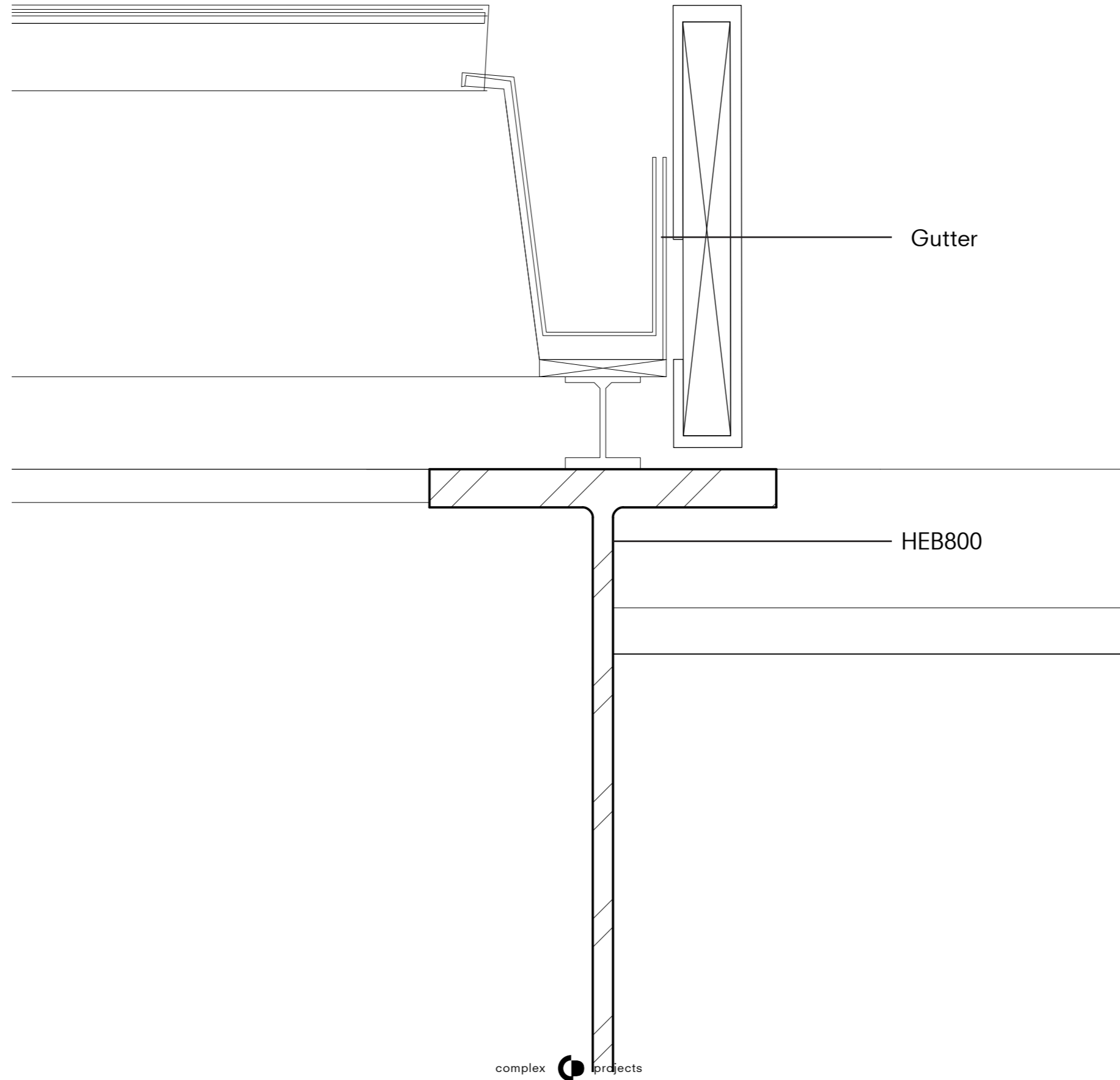
# ENVELOPE FRAGMENT 1:20



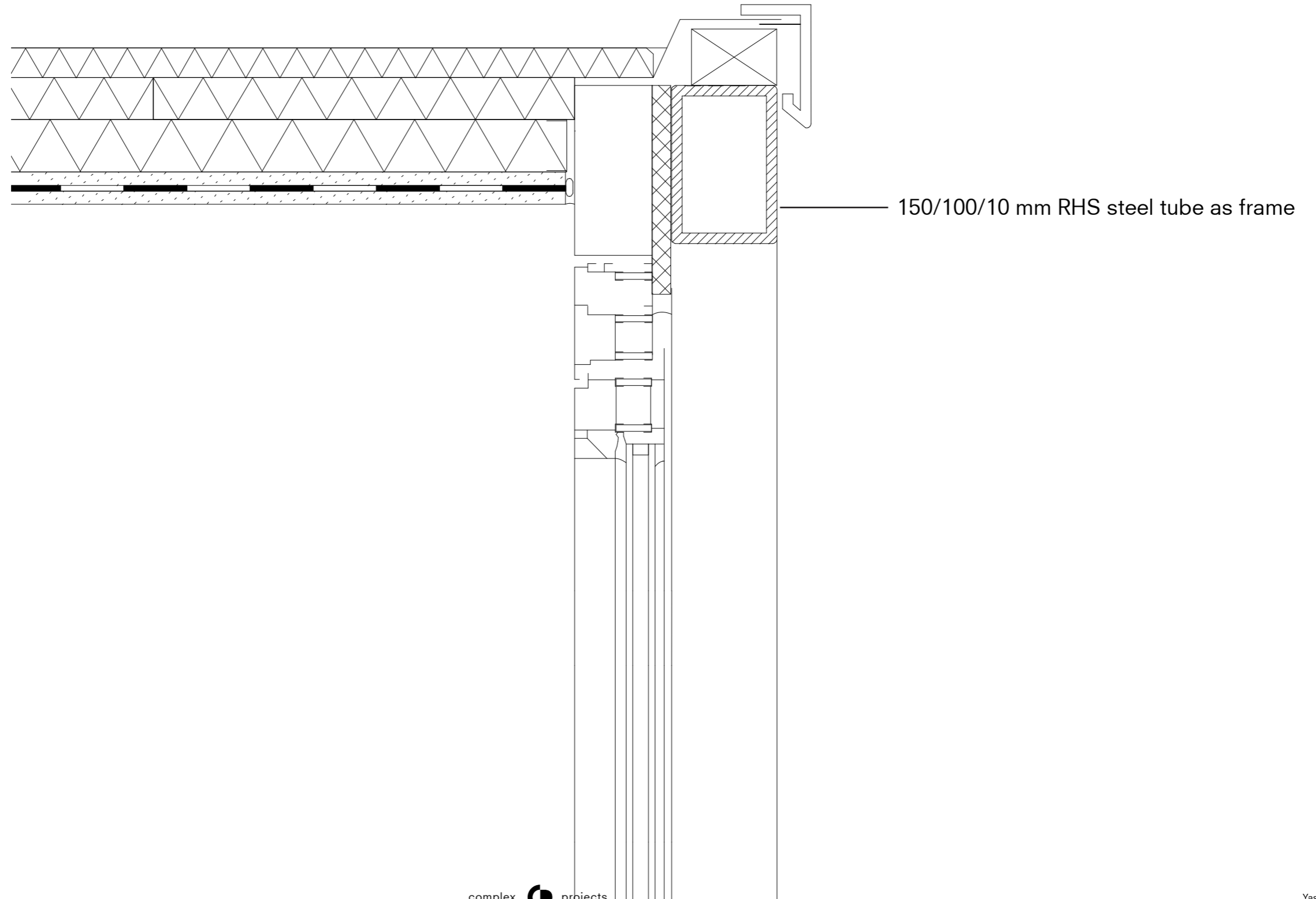
Sports floor:

- 9.5 mm top layer (Linoleum)
- 21 mm Carrier/suspension construction
- 19 mm Suspended underlayment (elastic foam layer or rubber mats)  
(Plywood)
- Vapour-proof membrane
- 19 mm Cementitious levelling compound (Plywood)
- 16 mm mineral wool
- 200 mm Concrete slab

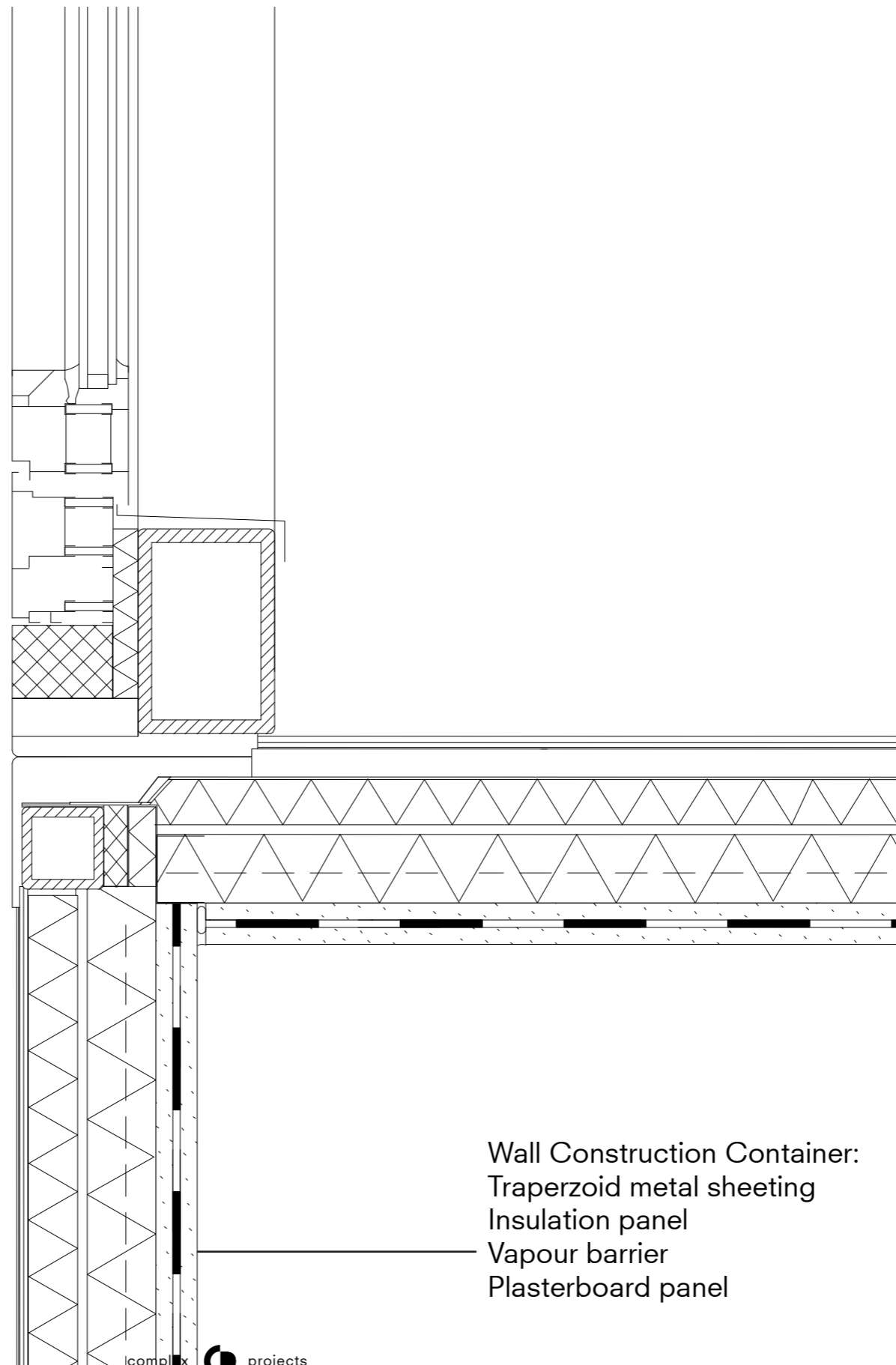
Drawing set  
**1. DETAIL 1:5**



Drawing set  
**2. DETAIL 1:5**

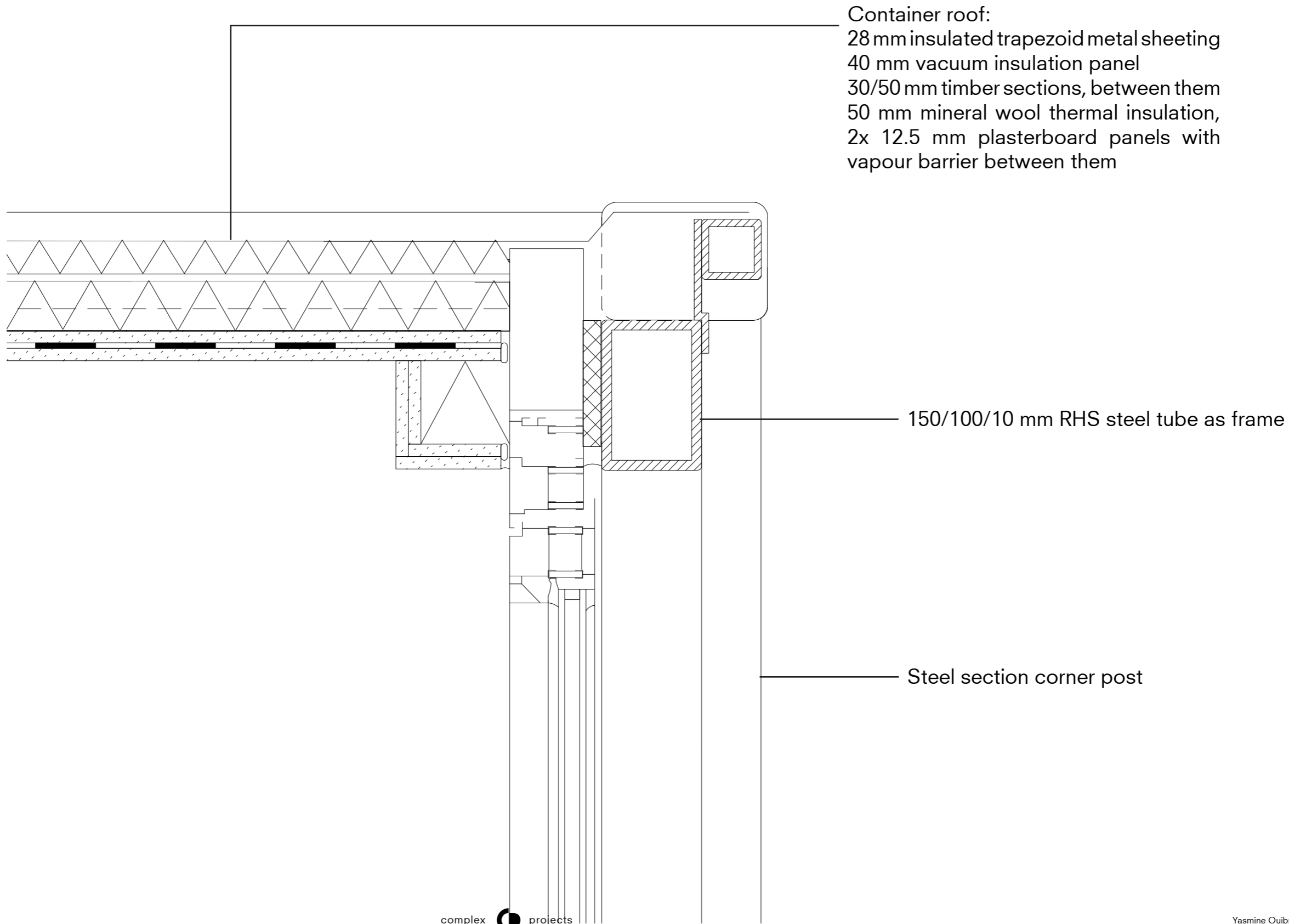


Drawing set  
**3. DETAIL 1:5**

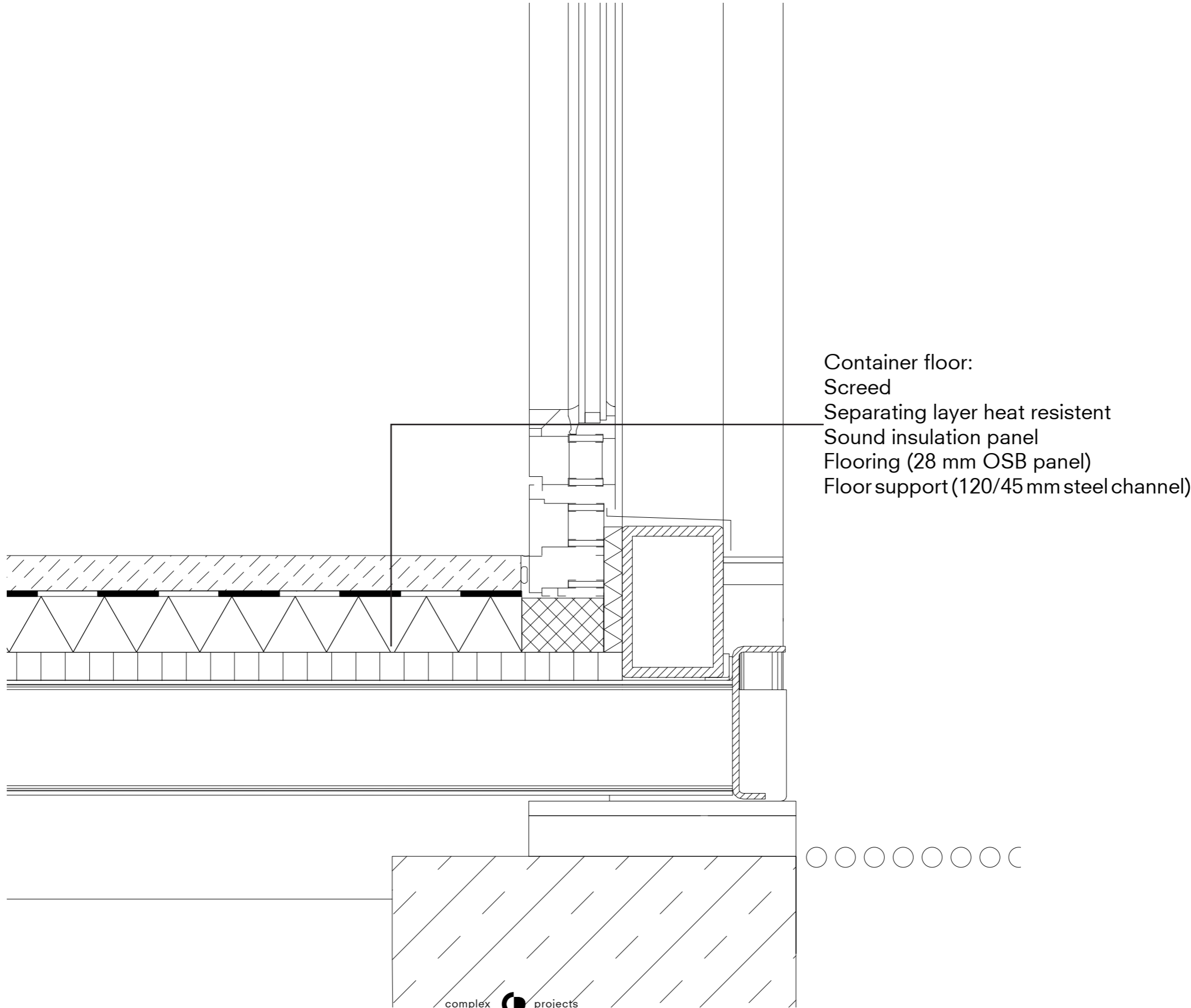




Drawing set  
**4. DETAIL 1:5**



Drawing set  
**5. DETAIL 1:5**



Container floor:  
Screed  
Separating layer heat resistant  
Sound insulation panel  
Flooring (28 mm OSB panel)  
Floor support (120/45 mm steel channel)

# Berlin S-Bahnhof Frankfurter Allee

Yasmine Ouibrahim

**1.** Exercise and recreate:

- Hang out
- Graffiti
- Sports class
- Dance studio
- Medical space

**S** S41 S42 S8 S85

**FEX** FLUGHAFEN-EXPRESS

**U** U5

**Tram** 16, M13

**BUS** N5

**BIKE** BIKE PARKING

**2.** Eat and drink:

- Spati's
- Curry wurst
- Biergarten

**3.** Debate and collaborate:

- Event and conference room

**4.** Core area:

- Ticket sale
- Travel Information
- Seating area
- Services



Exhibitions and performances

**5.** Services:

- Lactationroom
- Prayerroom
- Lockers
- Toilets



**6.** Makers space:

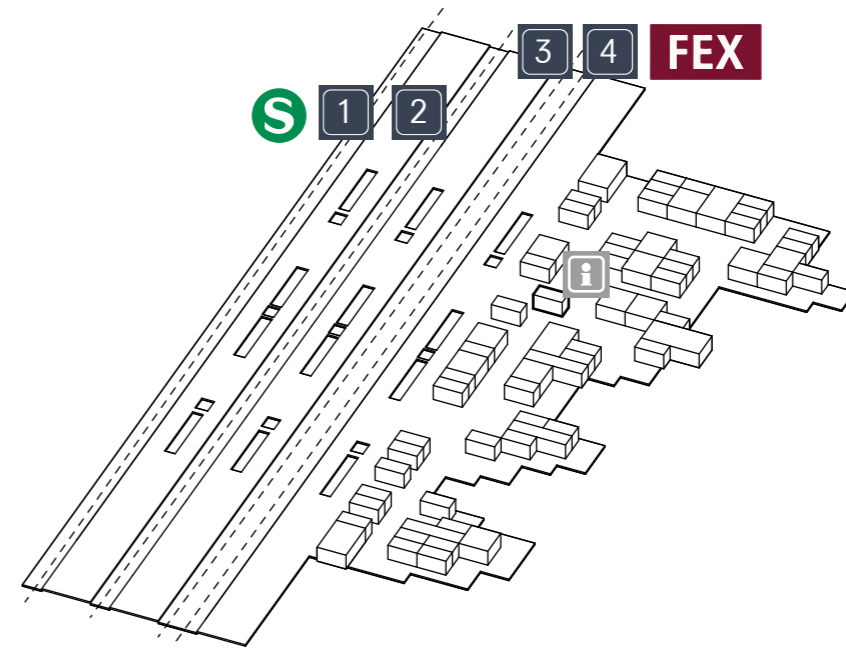
- Workshop space
- Ateliers (art/furniture)

**7.** Collect and repair:

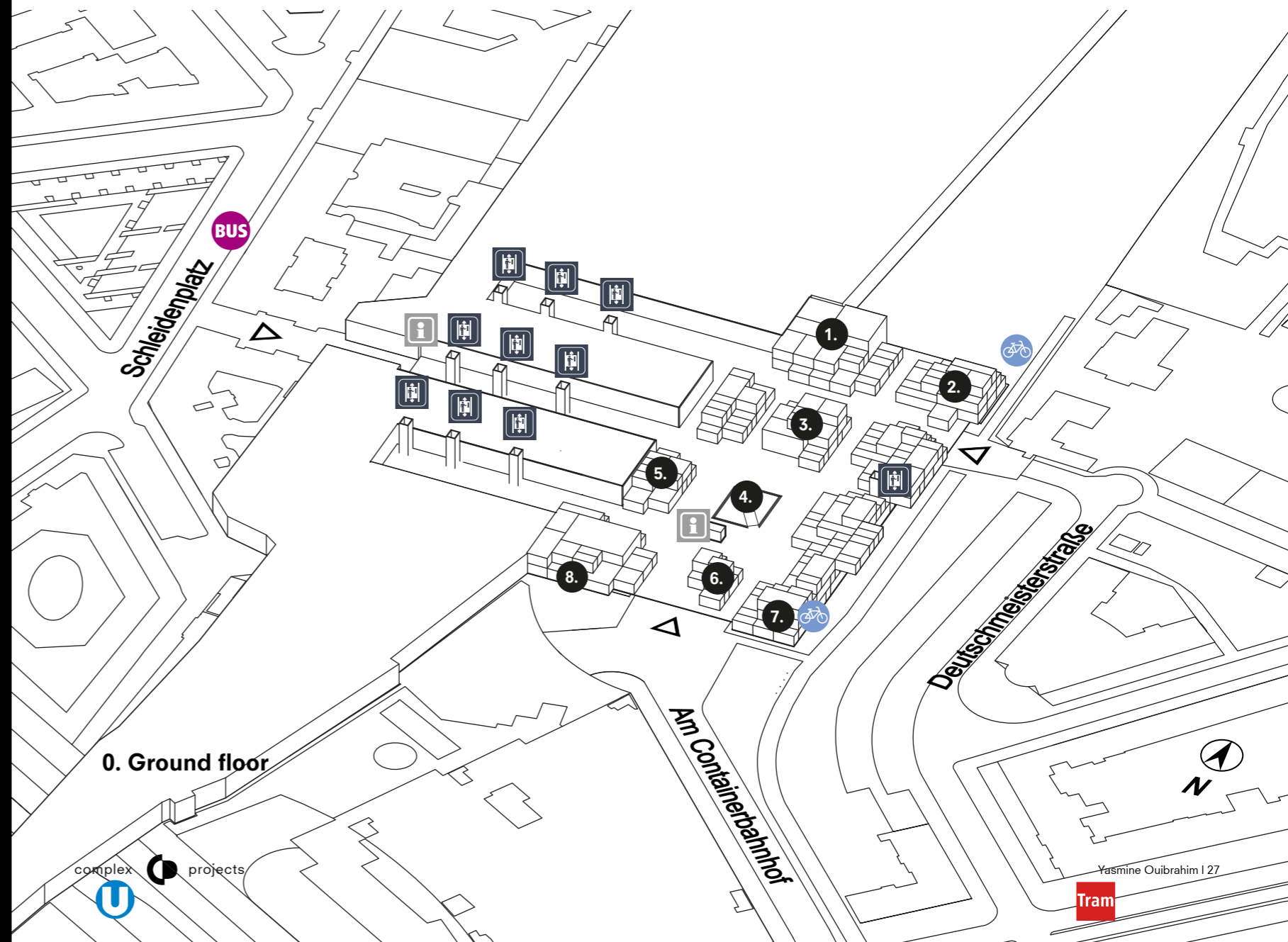
- Bike repair
- Bike renting

**8.** Emergency shelter

Circulation



1. First floor



0. Ground floor

complex projects



Yasmine Ouibrahim | 27



Drawing set

# HANGING OUT AT THE STATION



Drawing set  
**MANAGEMENT FROM INFODESK**



Drawing set  
**COFFEE TIME**



Drawing set  
**NOTUBERNACHTUNG**



Drawing set  
**STATION BY NIGHT**





Drawing set  
**PLATFORMS AND TRACKS**

