

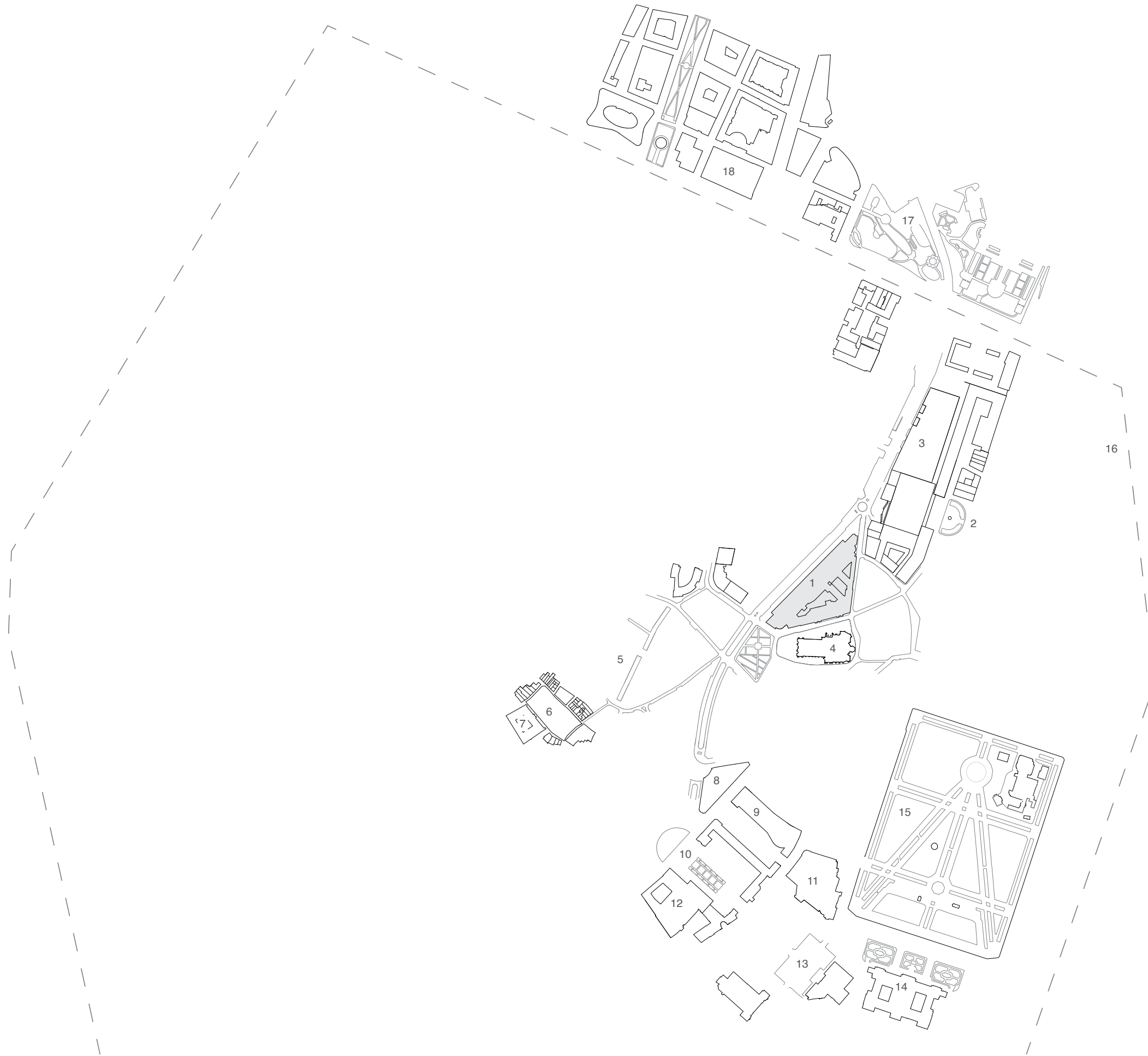
DRAWING

BOOKLET

MSc 4 - Interiors Buildings Cities

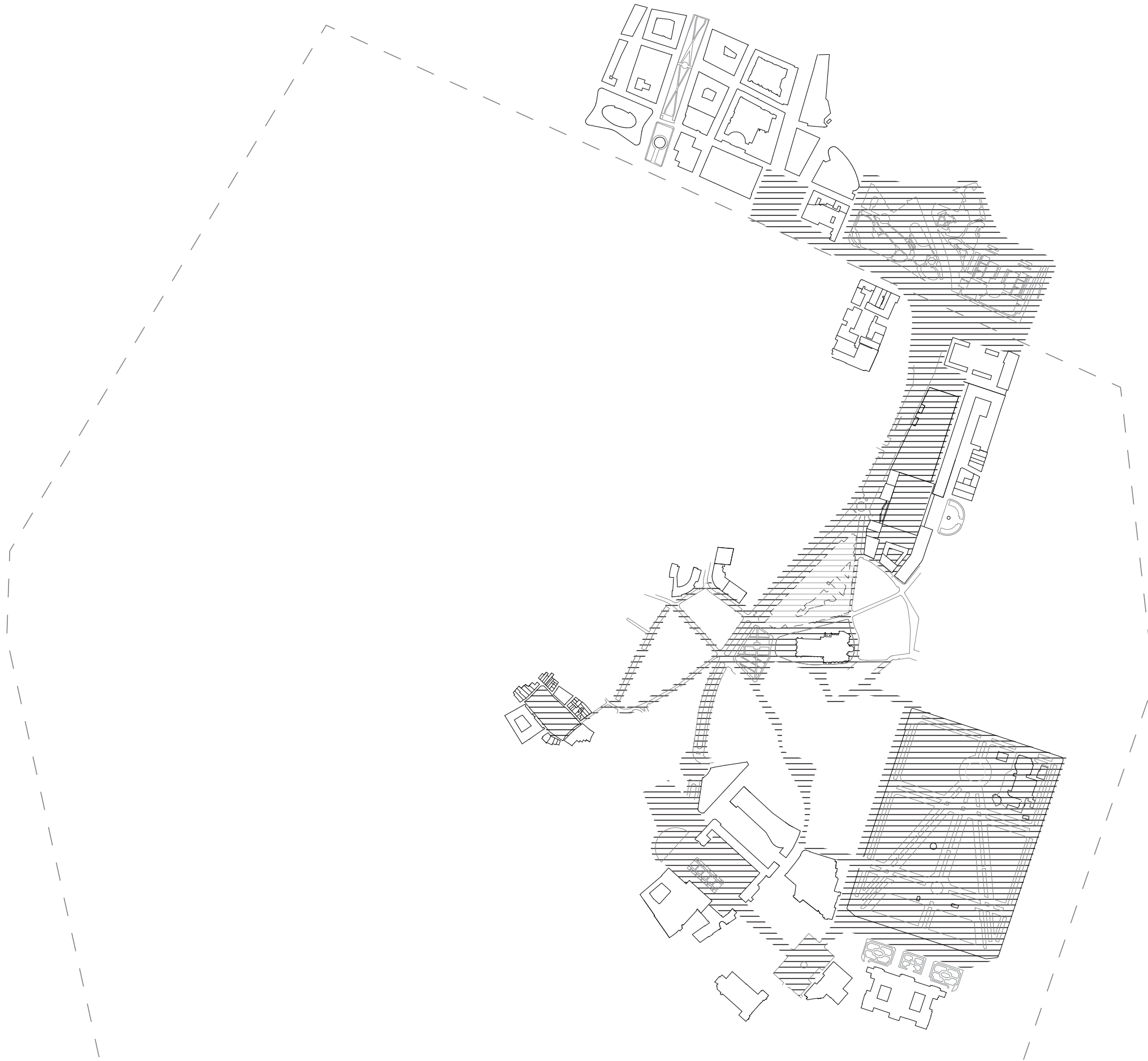
MARK PIMLOTT - JURJEN ZEINSTRAN - MATTHIJS KLOOSTER - CHRISTIEN JANSSEN

urban context



- 1 National Bank of Belgium
- 2 Congress column
- 3 Administrative Center
- 4 Cathedral of St. Michael and St. Gudula
- 5 Galeries Royales Saint Hubert
- 6 Grand-Place
- 7 Brussels Town Hall
- 8 Brussels Central Station
- 9 Galerie Ravenstein
- 10 Mont des Arts
- 11 Bozar
- 12 Royal Museums of Fine Arts
- 13 Place Royale
- 14 Royal Palace of Brussels
- 15 Royal Park
- 16 City centre 'Pentagon' line
- 17 Botanical Garden
- 18 Koning Albert II Laan, Noordwijk

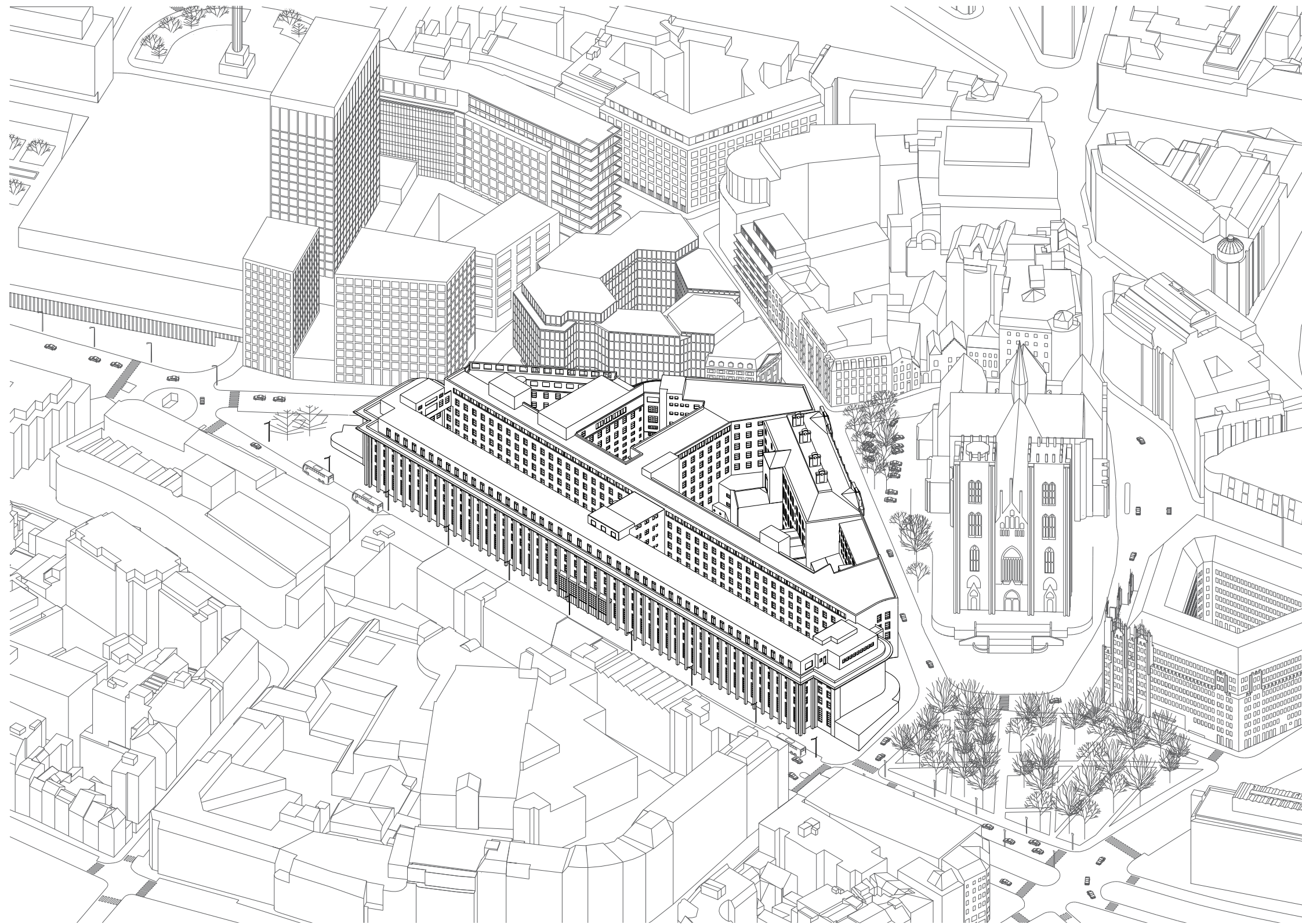
urban routes



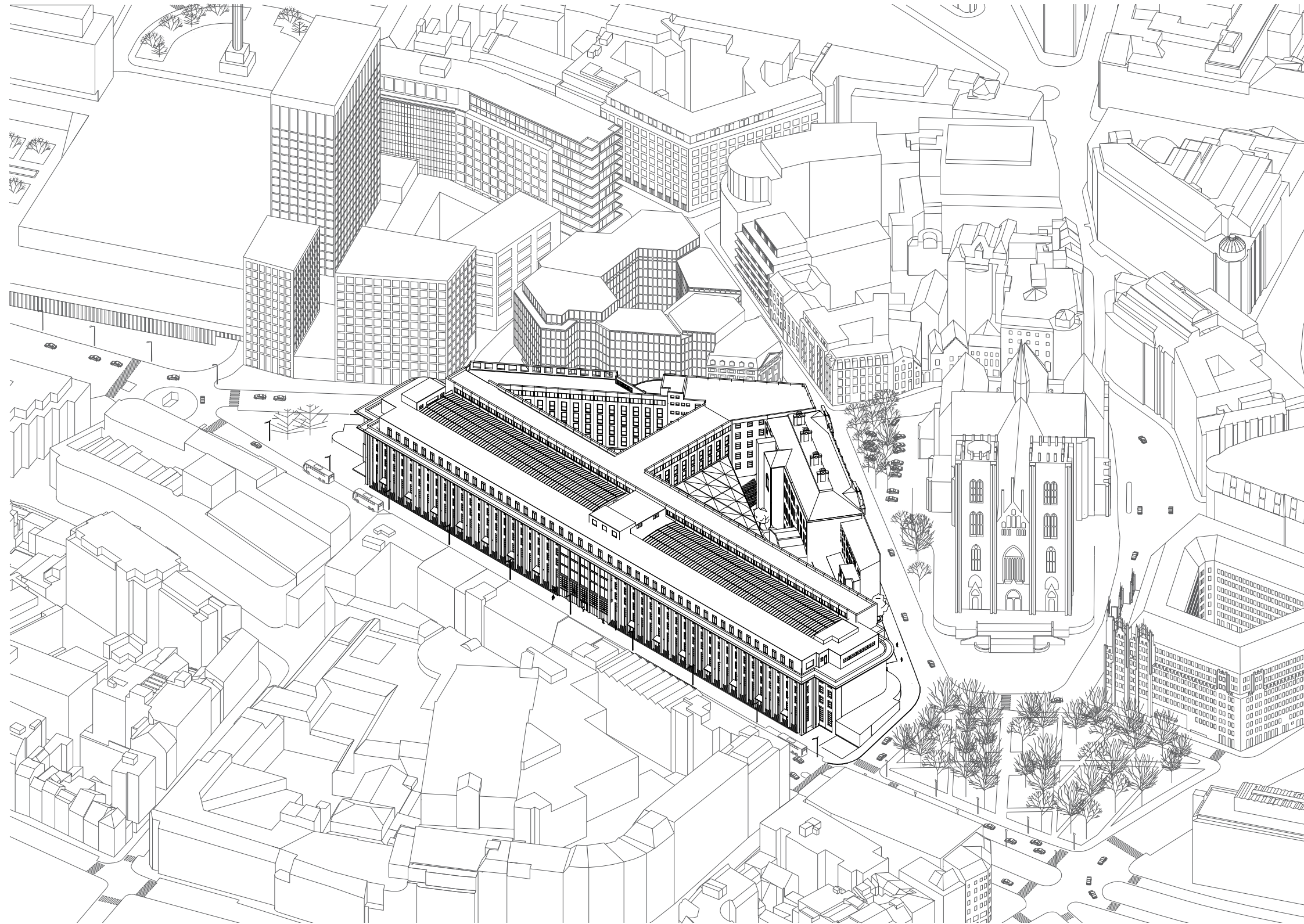
urban context



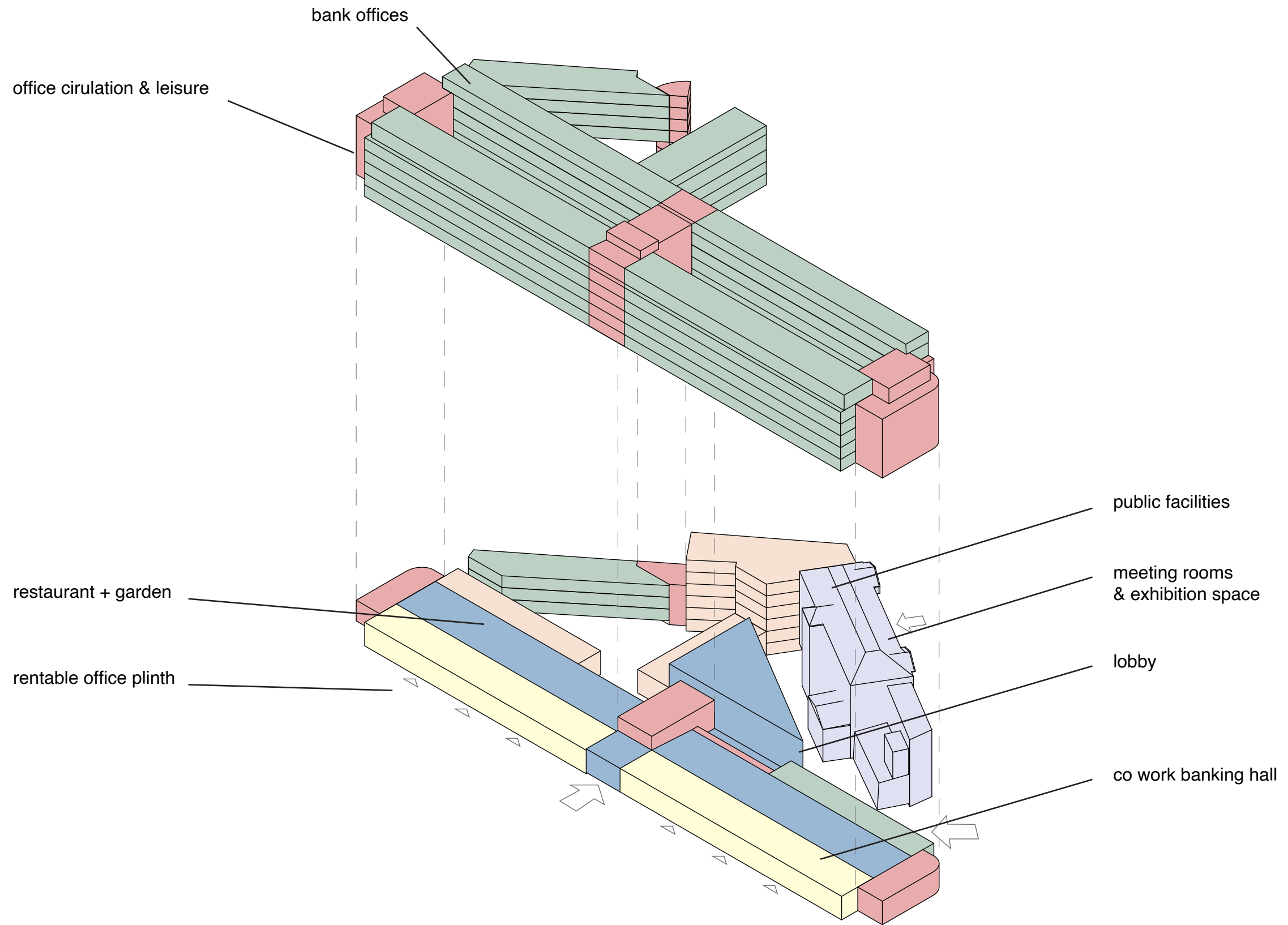
axonometric,
existing building



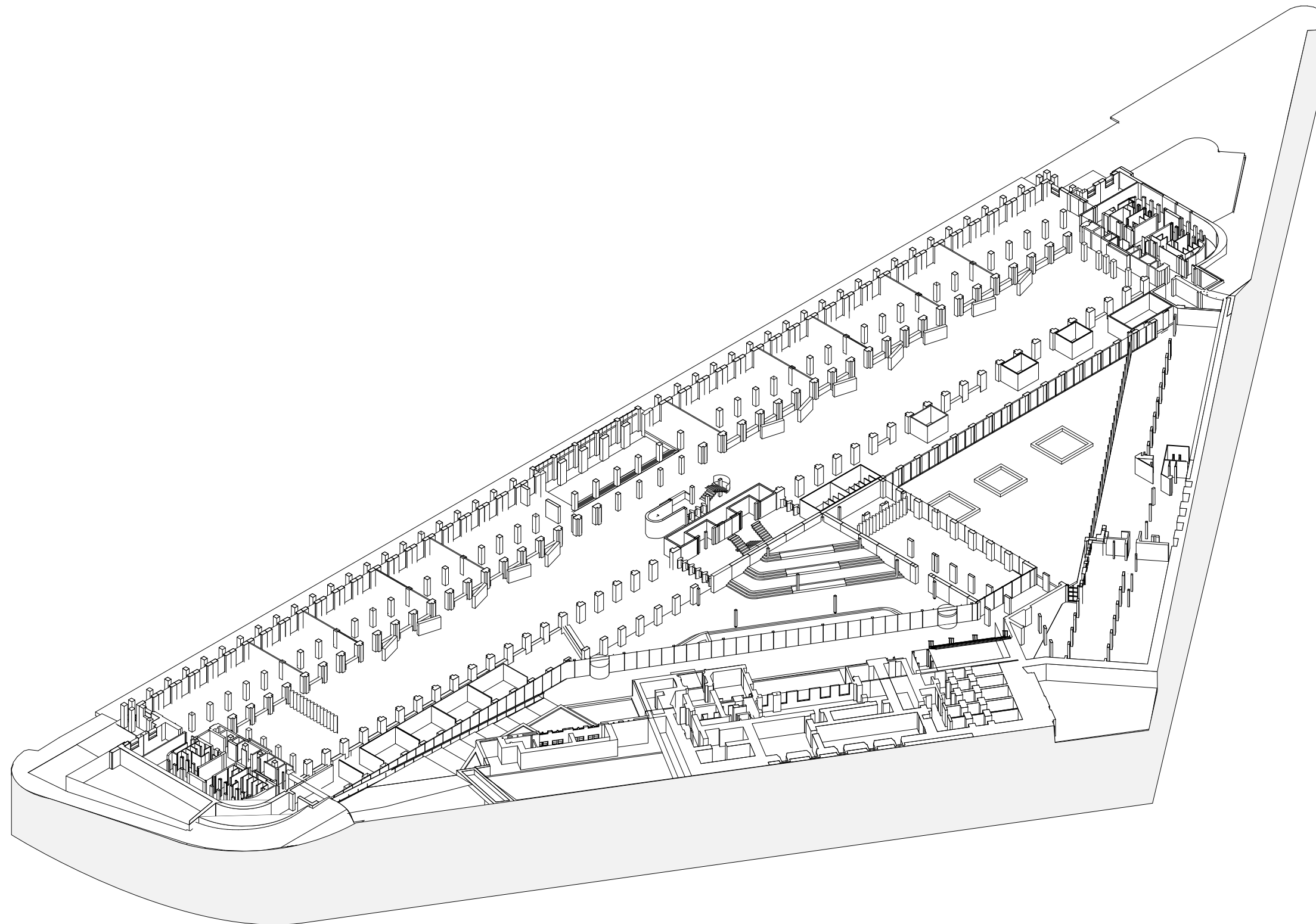
axonometric,
new design



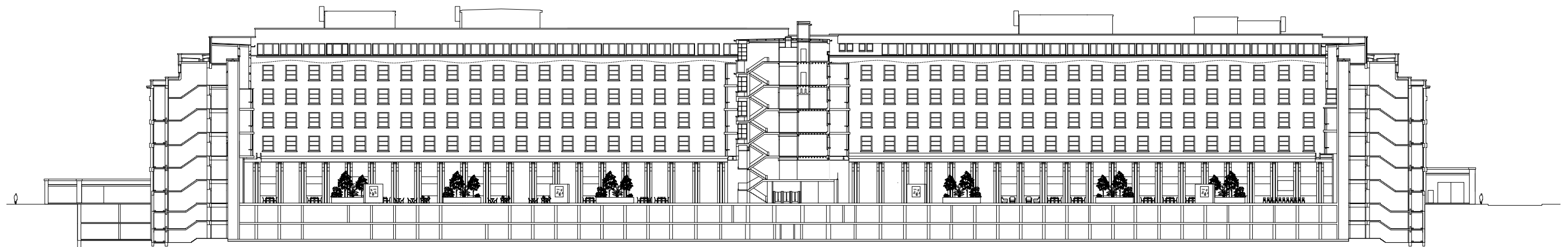
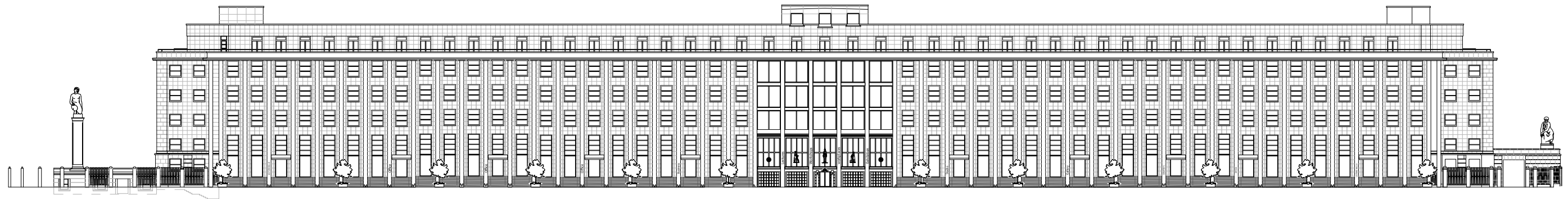
exploded axonometric, program scheme



exploded axonometric,
public ground floor

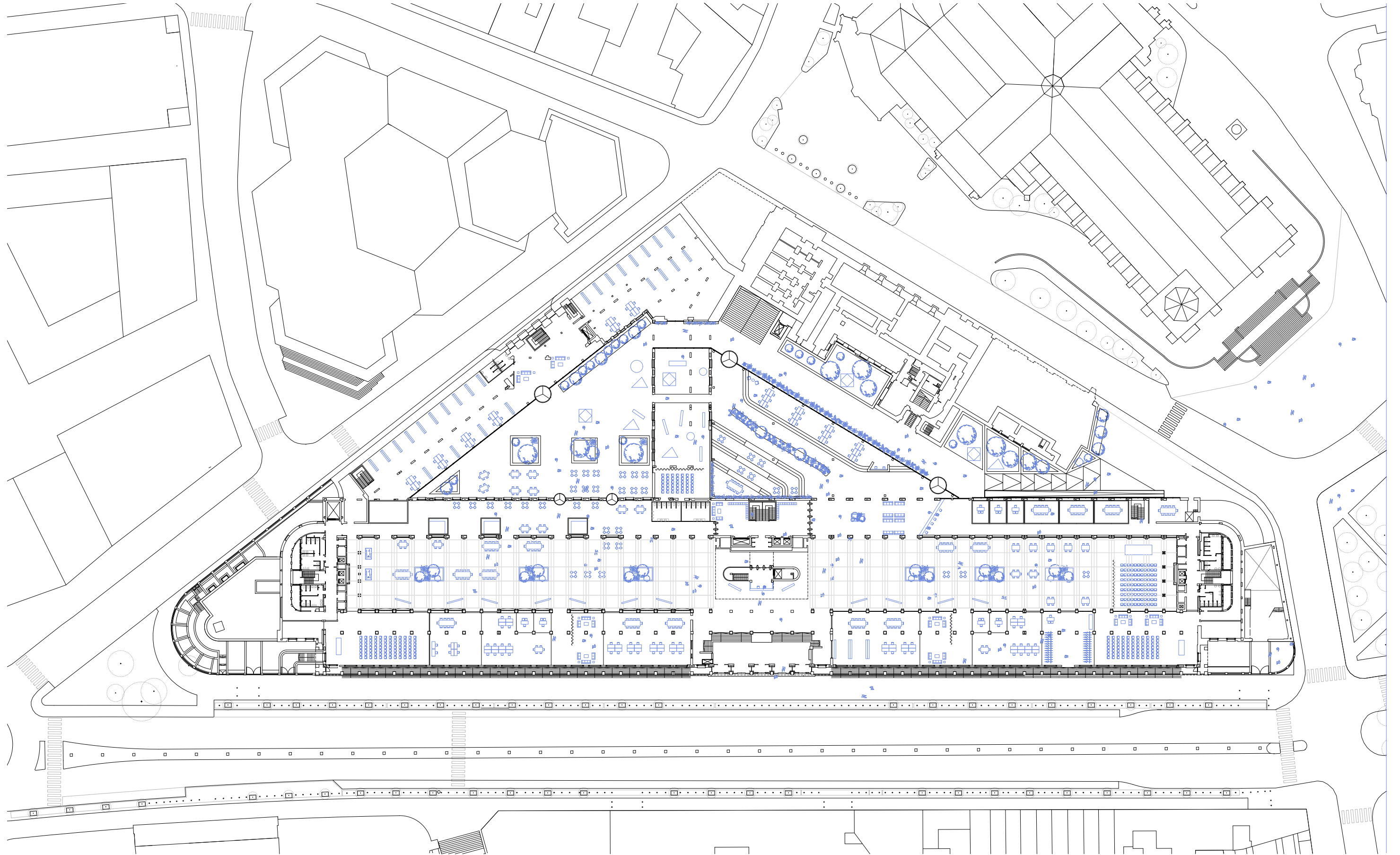


elevation front facade
longitudinal section



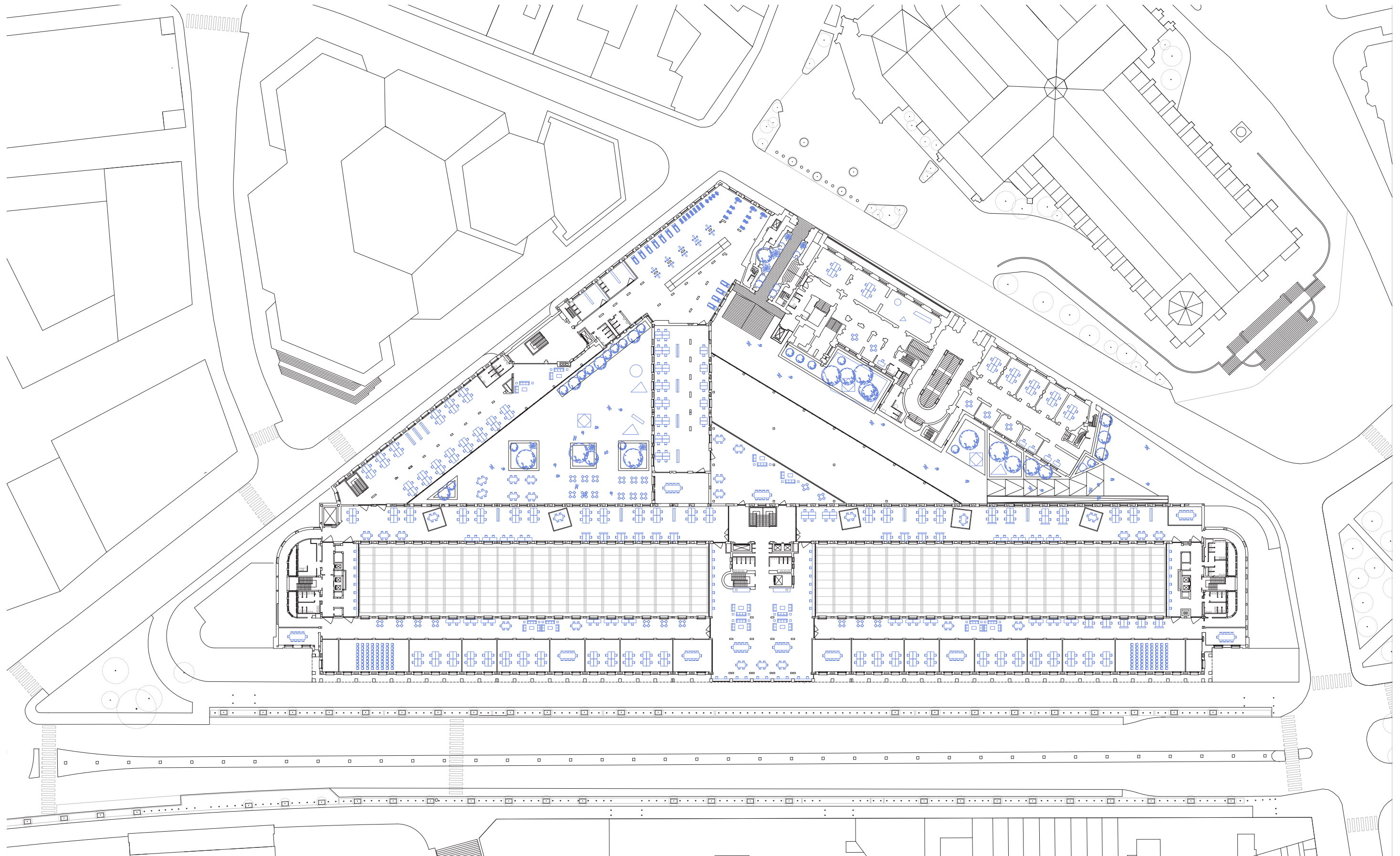
ground floor plan

1:800

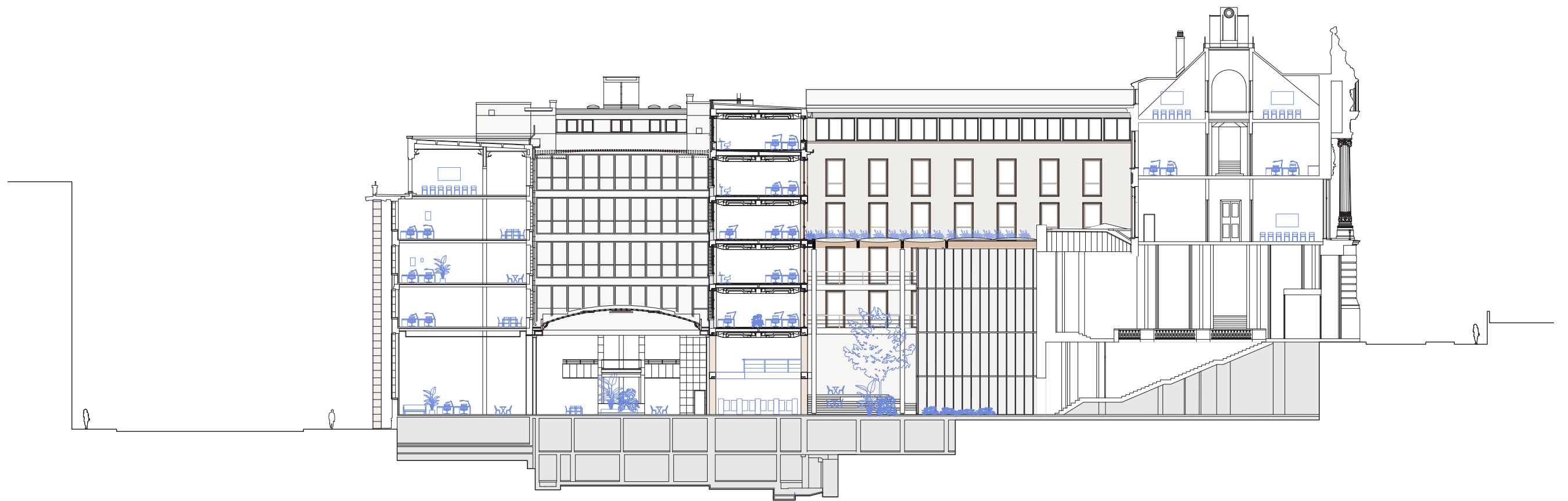


first floor plan

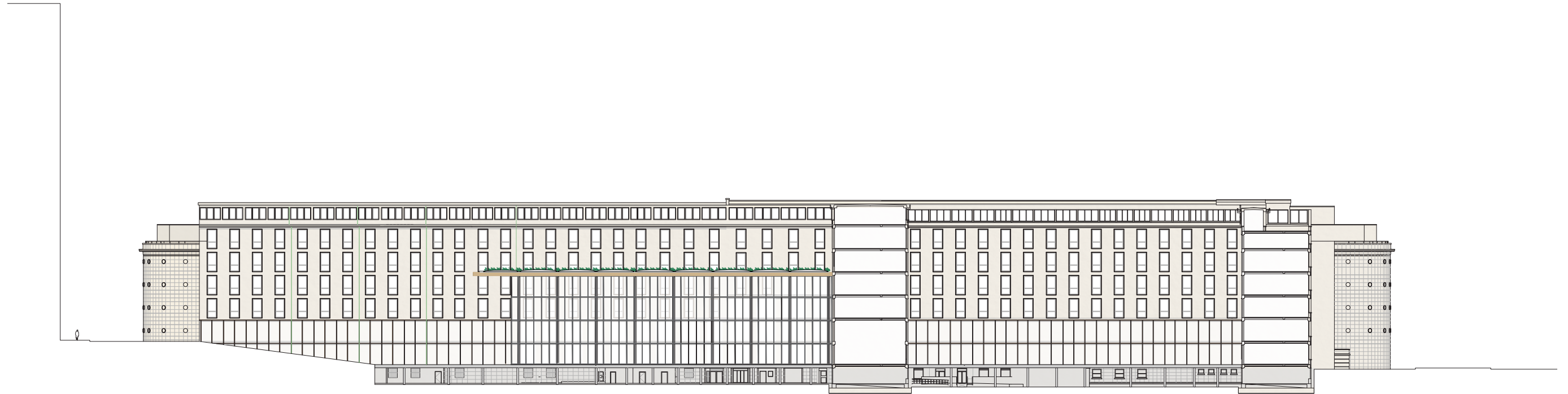
1:800



cross section



longitudinal section courtyards



elevation, section
courtyard fragment

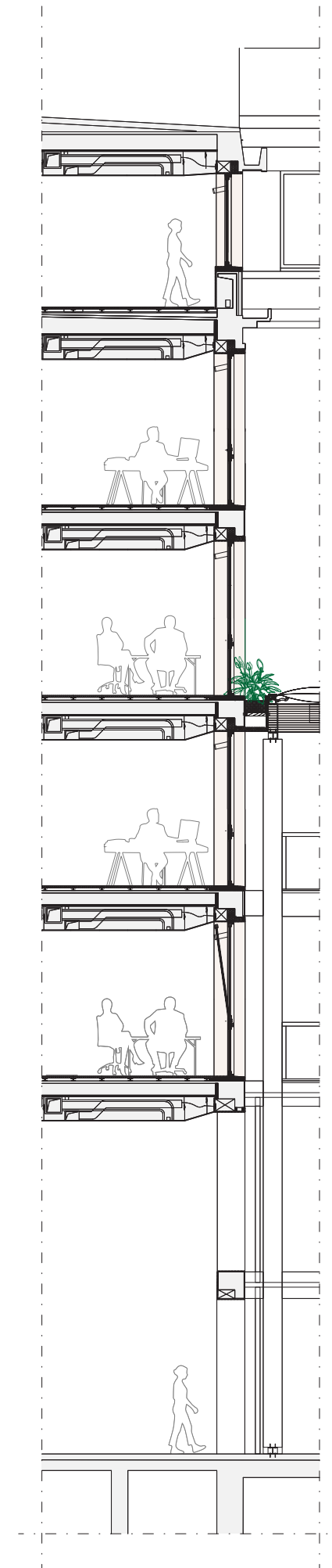


Structure:
Existing concrete column, beam structure with a brick infill.

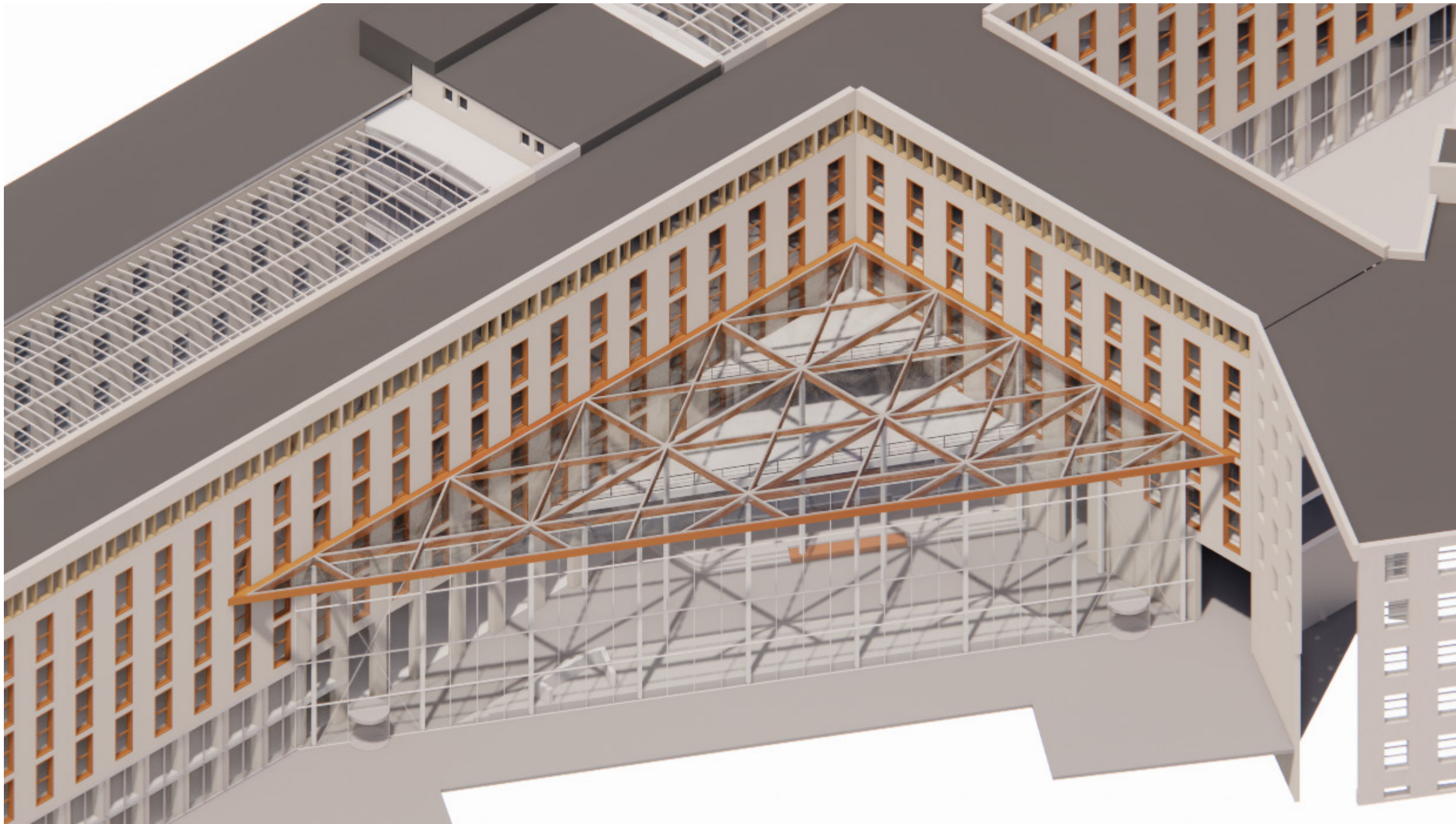
Windows upper floors:
Removing bricks underneath existing windows, creating a bigger opening.
New Larch wooden window frames with to be opened upper part.
Placing new Larch wooden finishing around window frame.

Facade:
New light creme clean colored plaster on top of existing structure.

Plinth / Atrium facade:
Wooden curtain wall with glass panels.

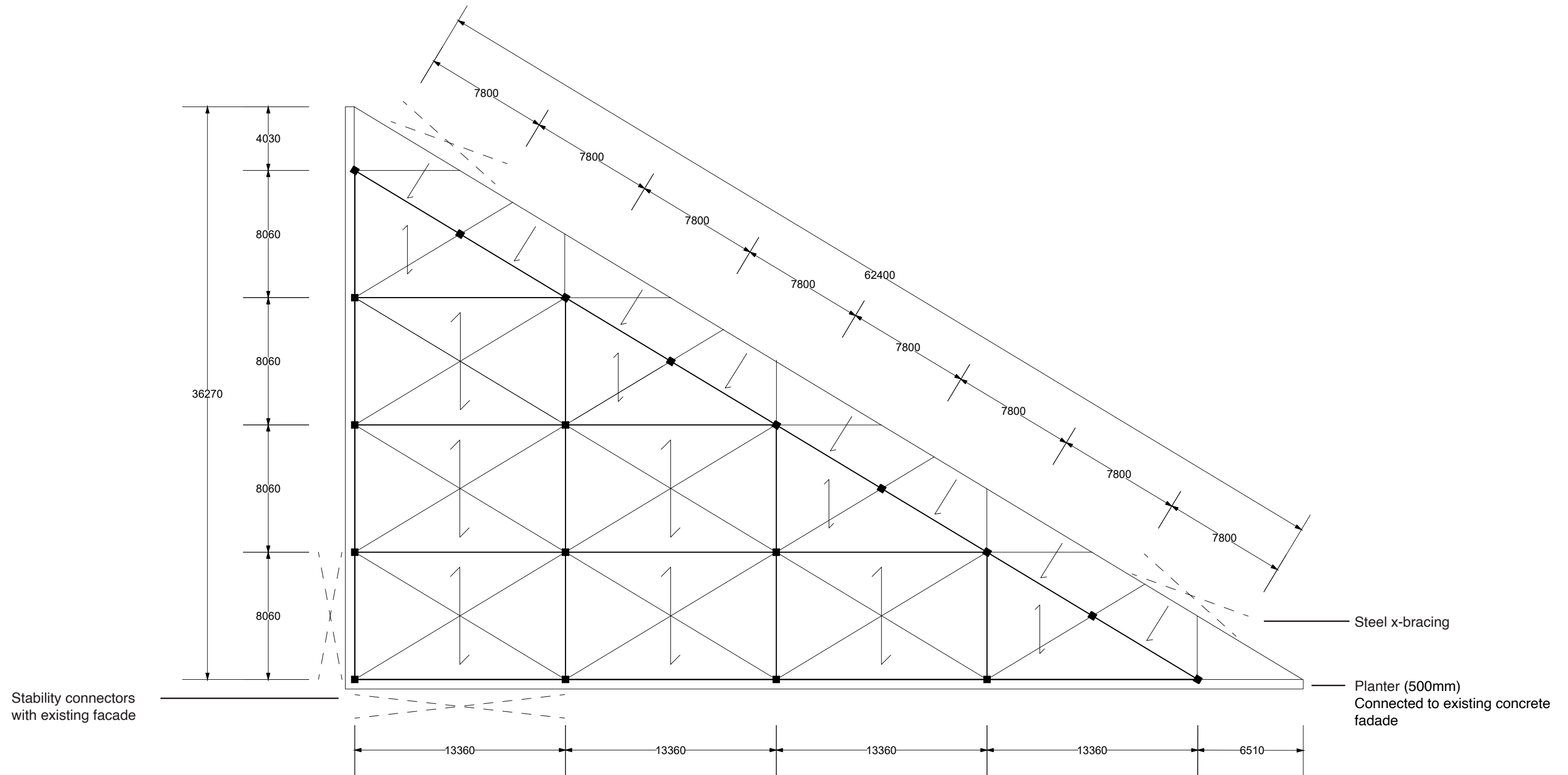


bird eye view
new lobby

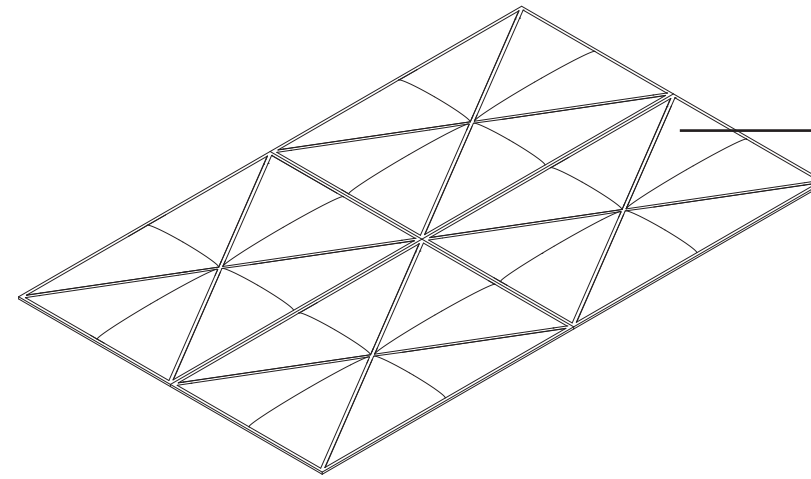


Independend wooden structure shows the banks new image

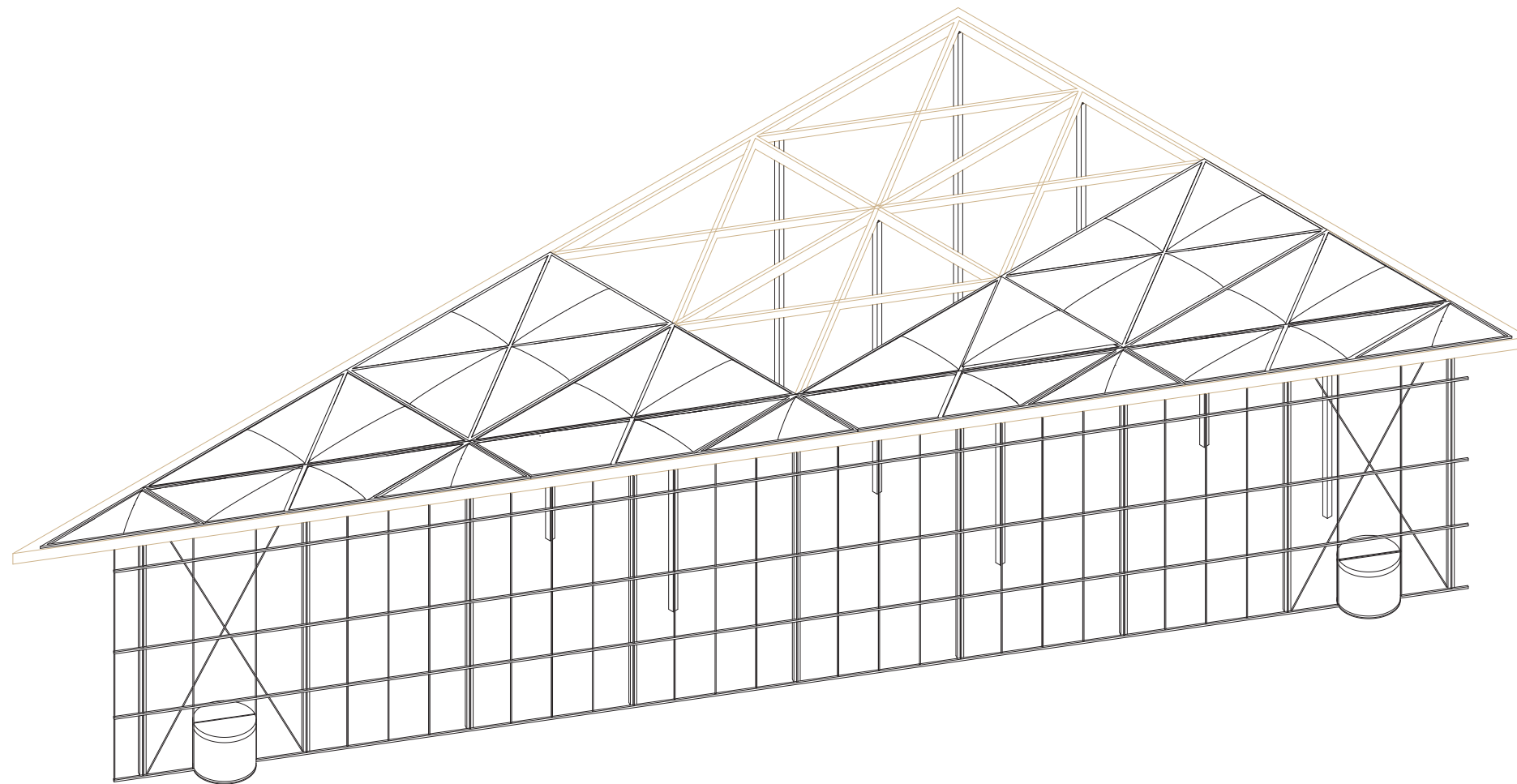
lobby grid



etfe roof system



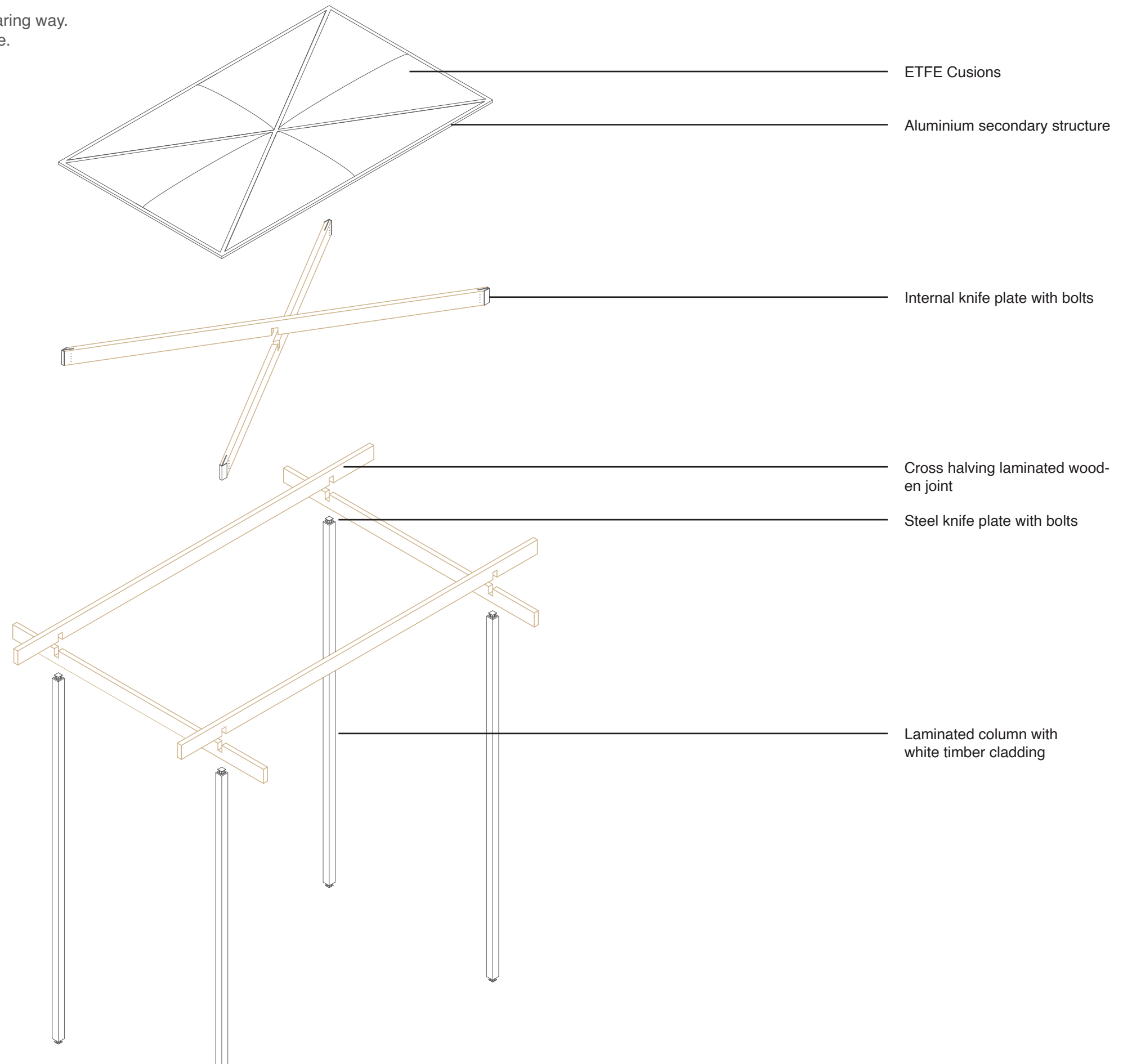
16 ETFE Cushions hold together by a steel frame on a 8x13m grid



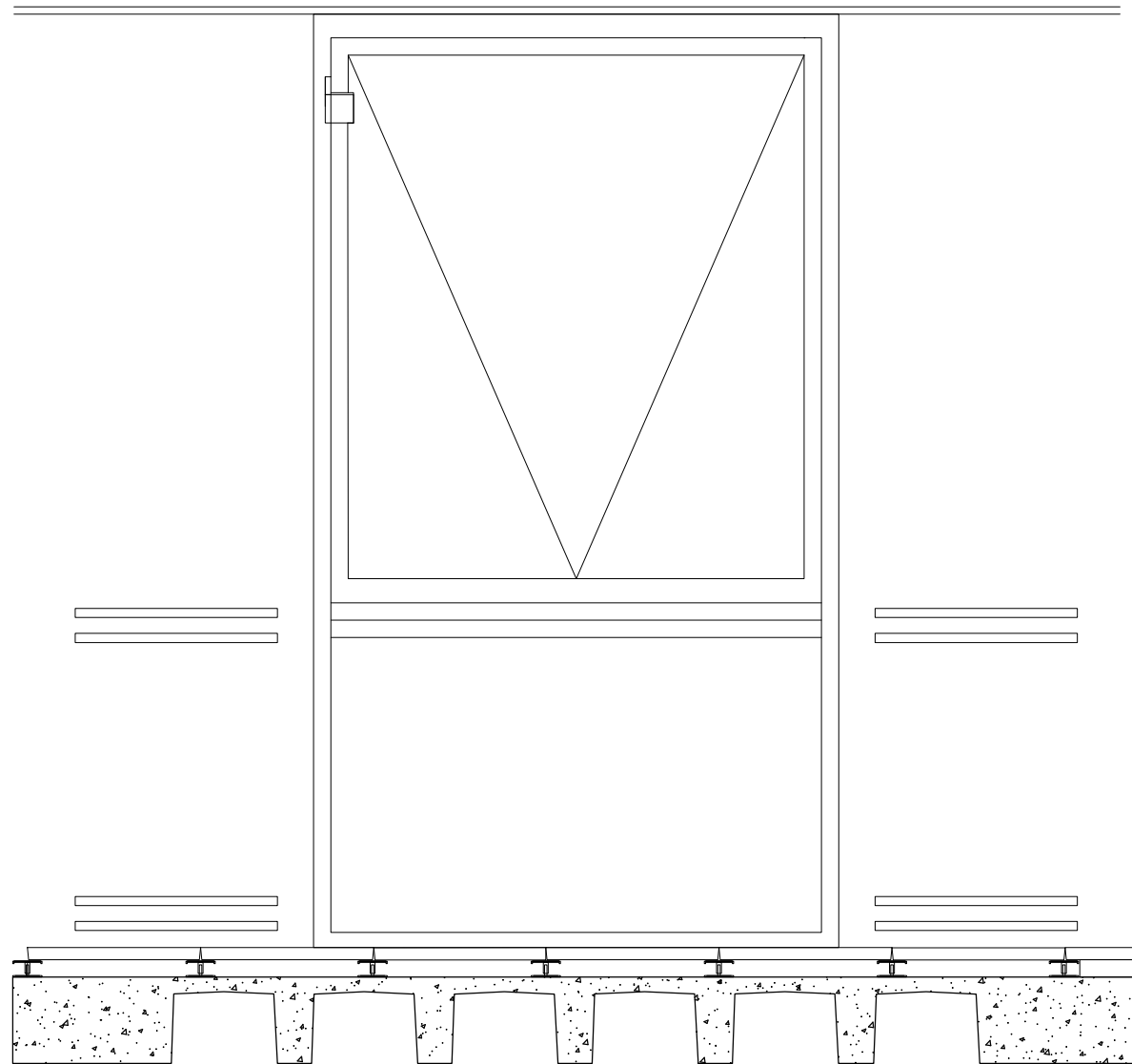
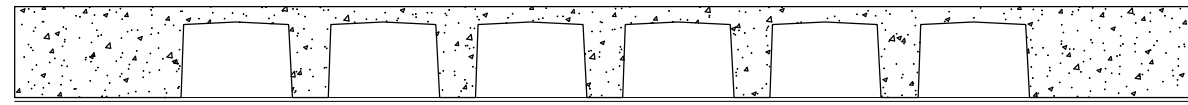
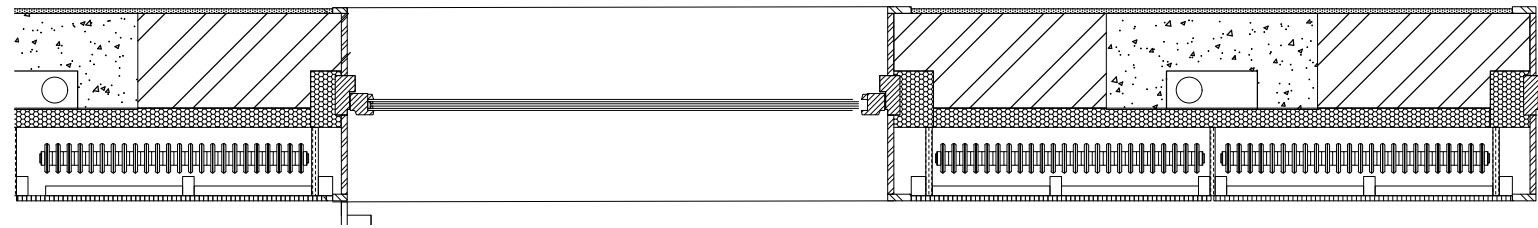
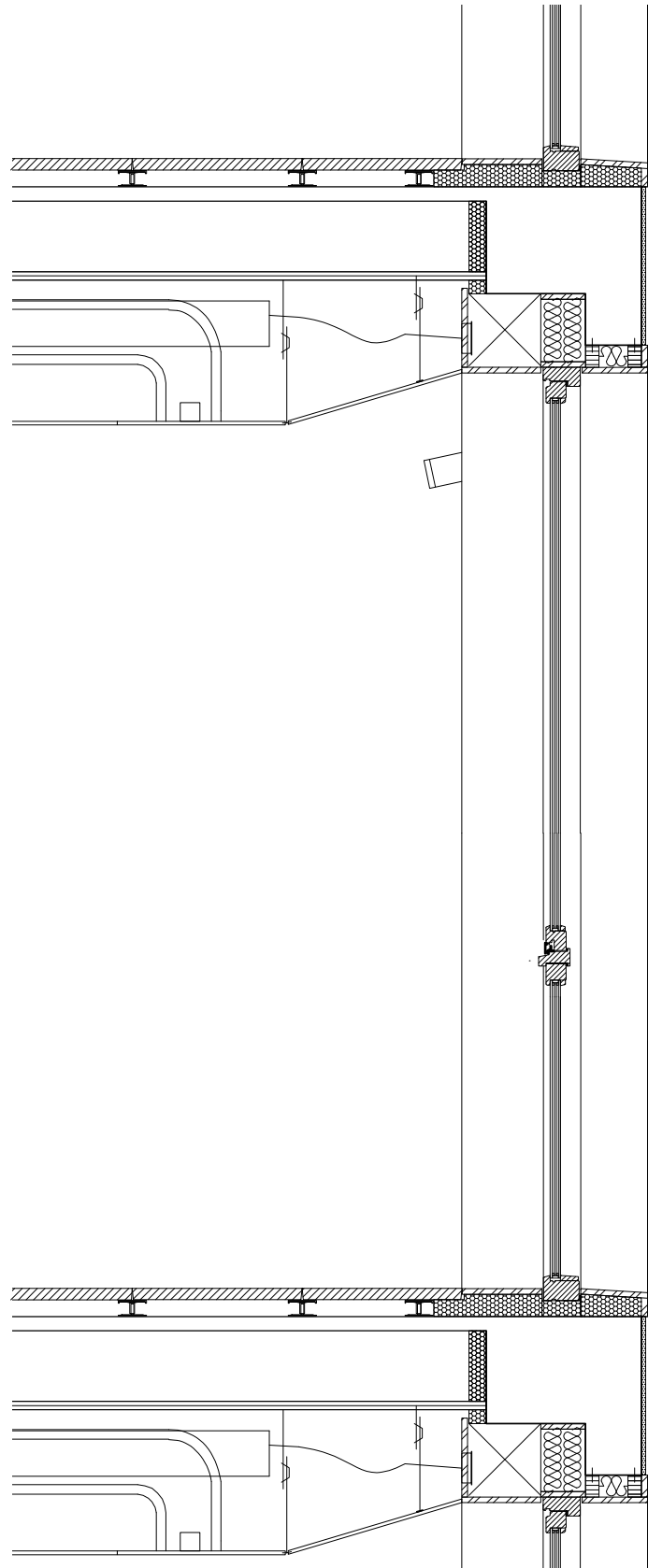
ETFE is 1% the weight of glass and has up to 95% light transmission.

structural joints

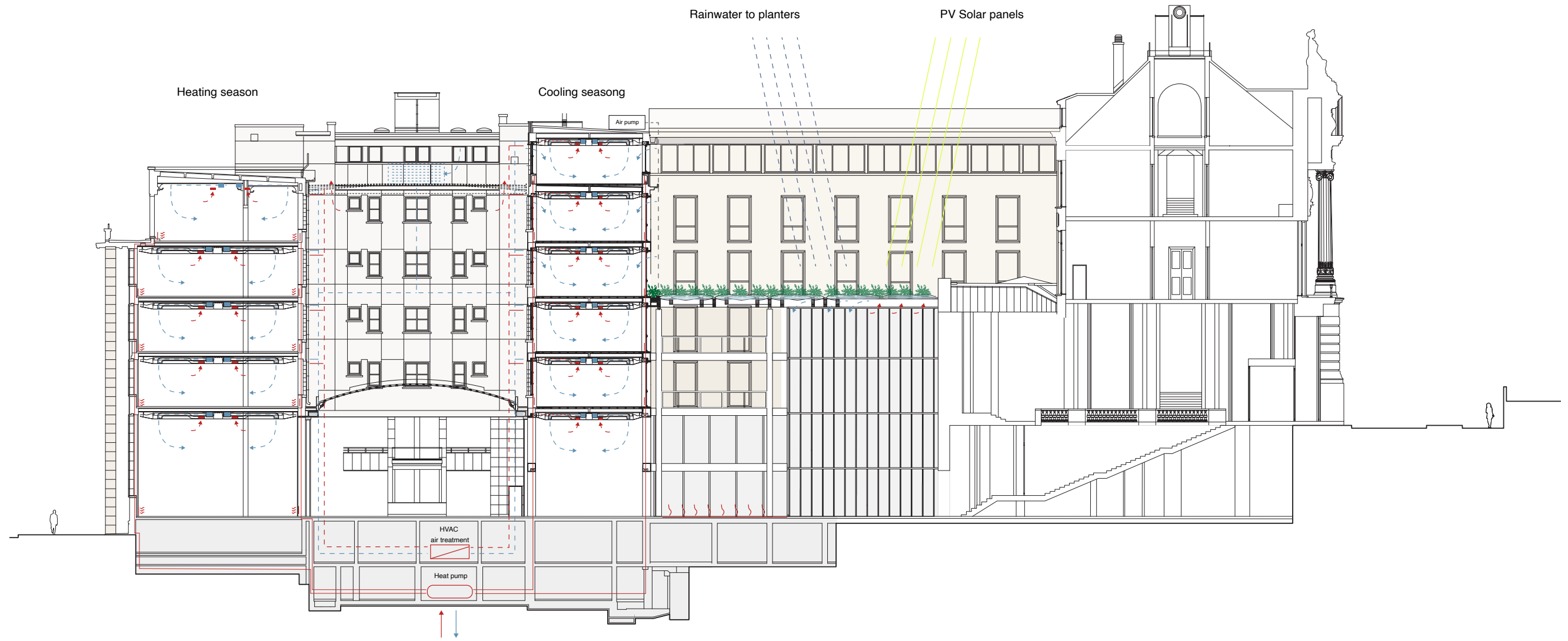
The wooden column holds the beam via the knife plate connector in a floating way.
The laminated beams are internal connected so no connectors are visible.



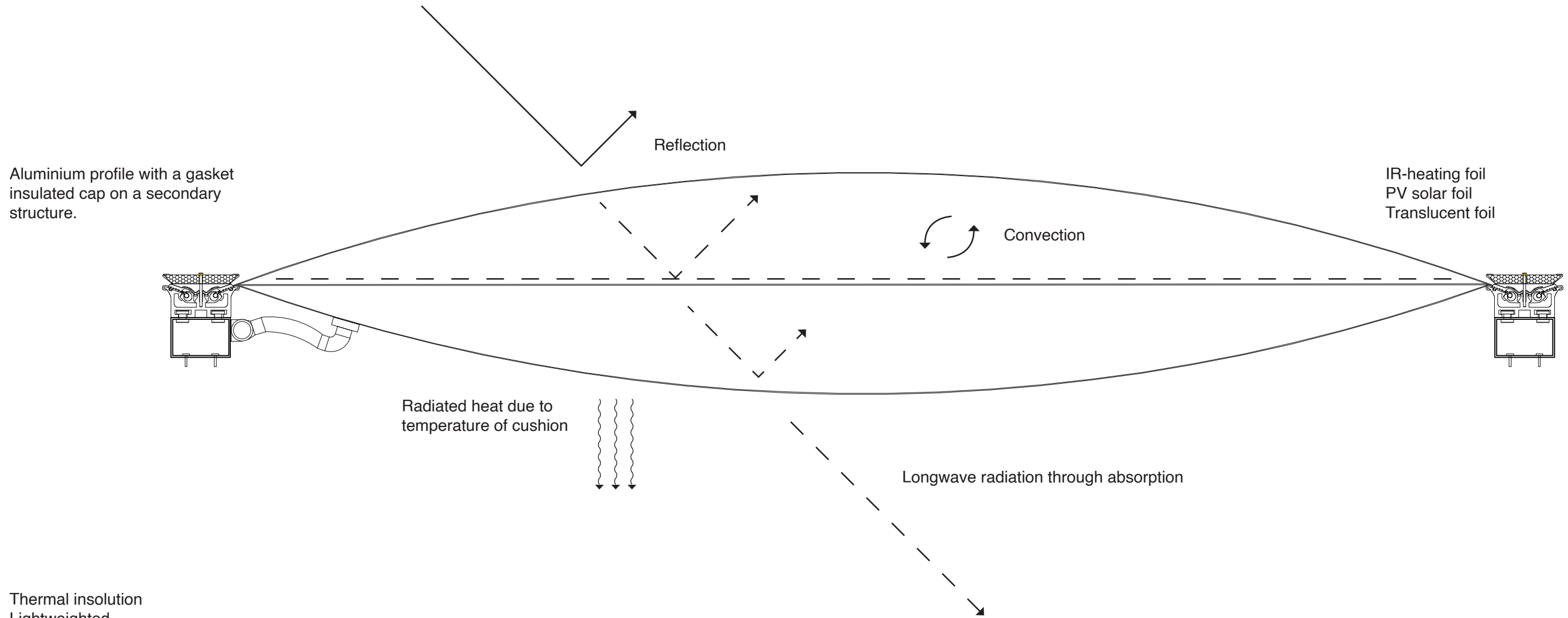
section, plan, elevation
office fragment



cross section climate design



section etfe roof



Aluminium profile with a gasket insulated cap on a secondary structure.

IR-heating foil
PV solar foil
Translucent foil

- Thermal insulation
- Lightweight
- Energy generating with solar panels
- Dirt resistant
- Reflection of light
- Translucent foils reflecting light and heat
- Central Air pump controlling temperature, pressure and humidity, controlling internal climate.

detail wall, roof joint

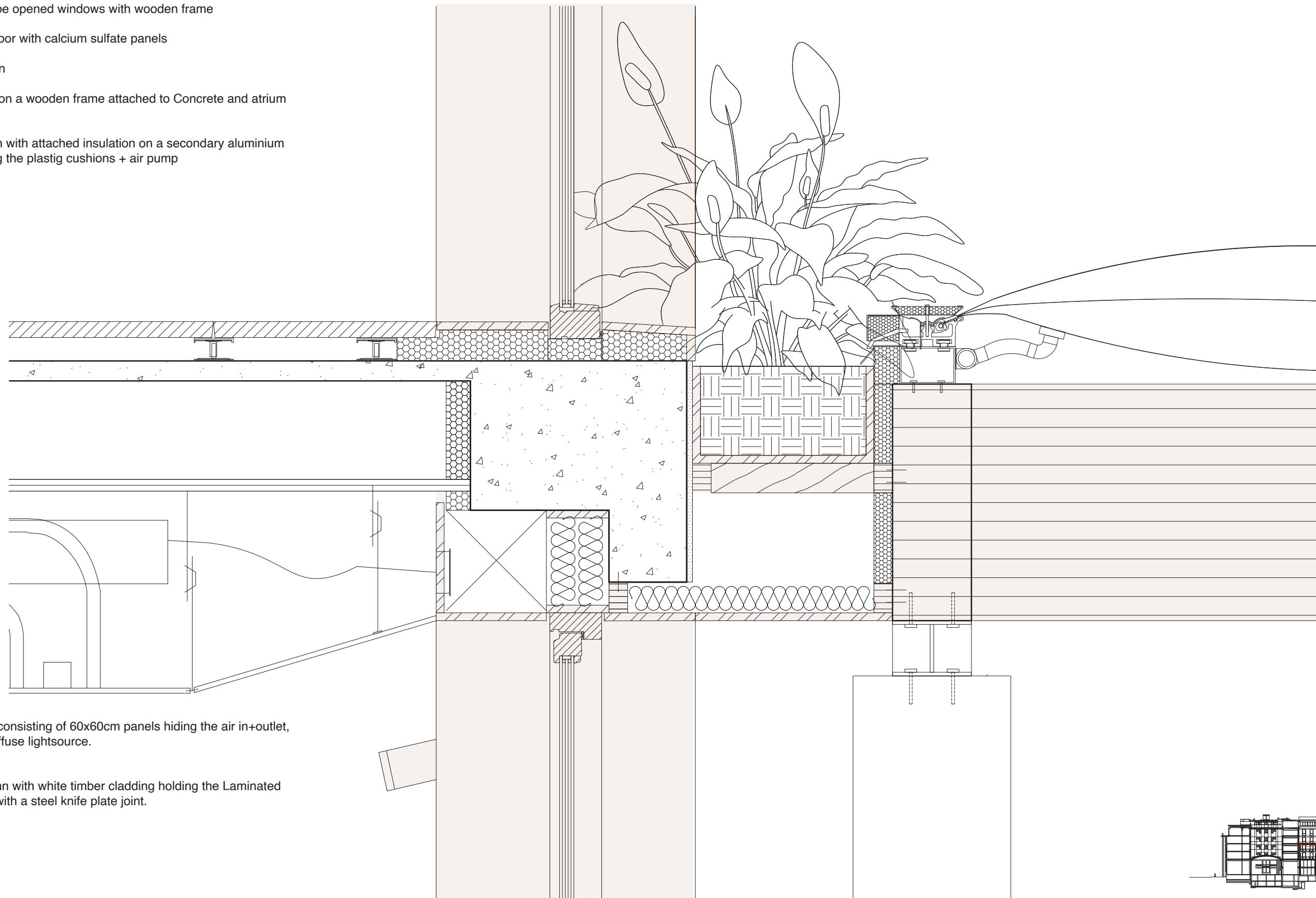
Triple glazed to be opened windows with wooden frame

Existing raised floor with calcium sulfate panels

Internal Insulation

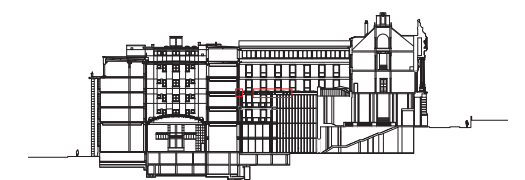
Wooden planter on a wooden frame attached to Concrete and atrium beam

ETFE connection with attached insulation on a secondary aluminium structure, holding the plastig cushions + air pump



Lowered ceiling consisting of 60x60cm panels hiding the air in+outlet, sunken 60x60 diffuse lightsource.

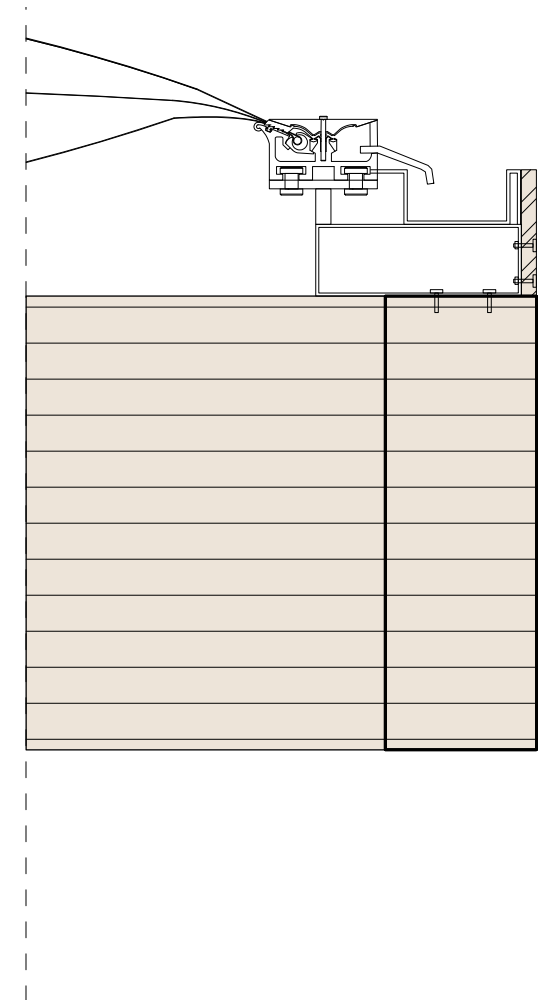
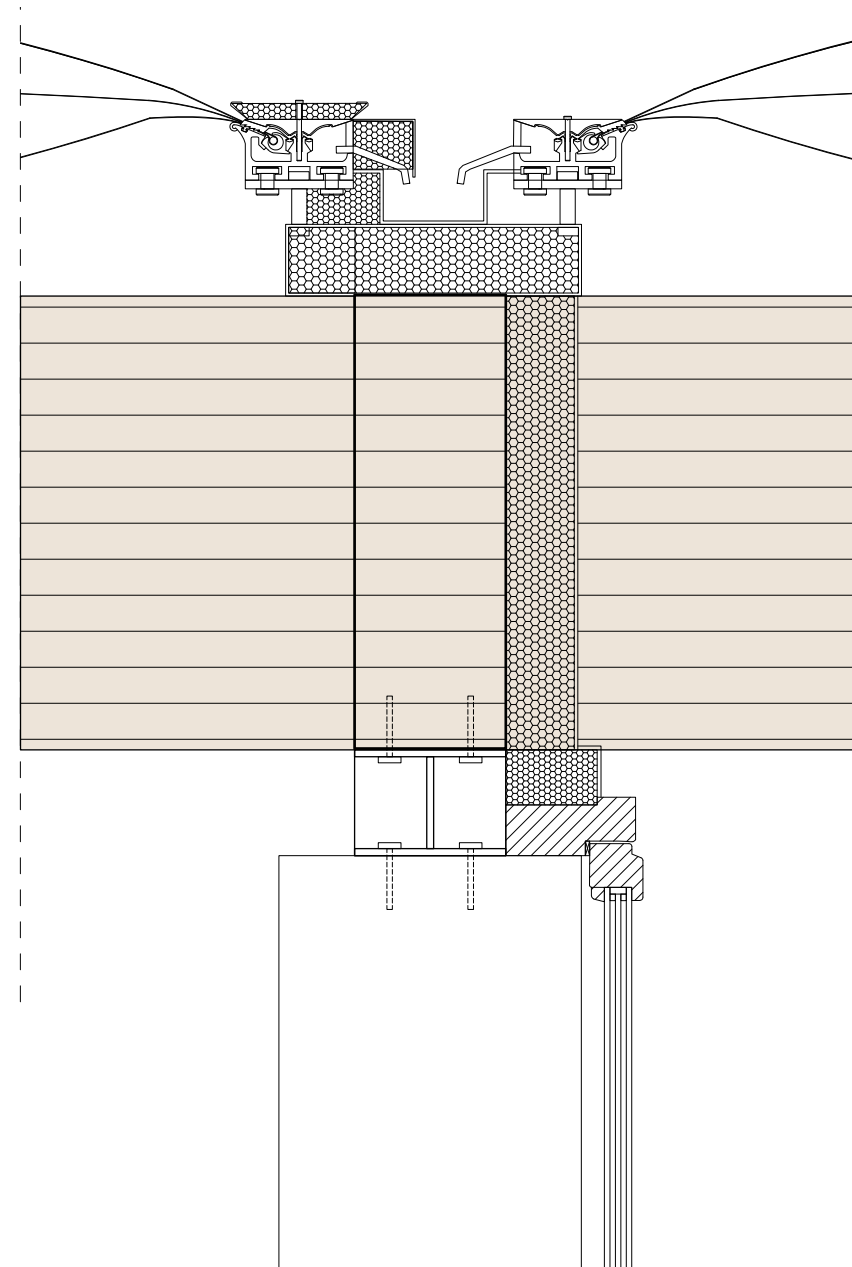
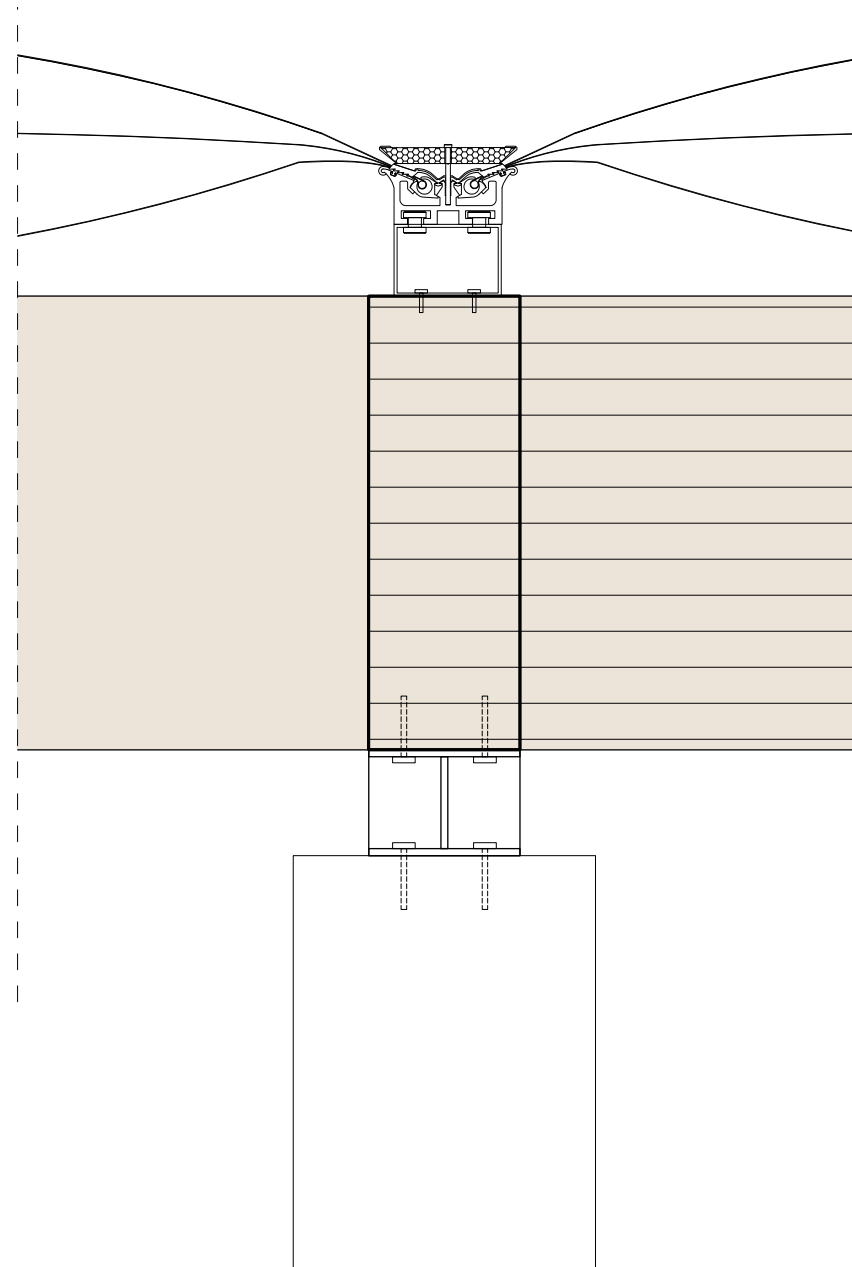
Laminated column with white timber cladding holding the Laminated wooden beams with a steel knife plate joint.



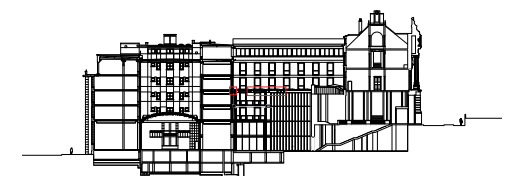
detail new roof

ETFE connection with attached insulation on a secondary aluminium structure, holding the plastic cushions + air pump.

Aluminium structure on different heights so gutters have the correct angle for drainage



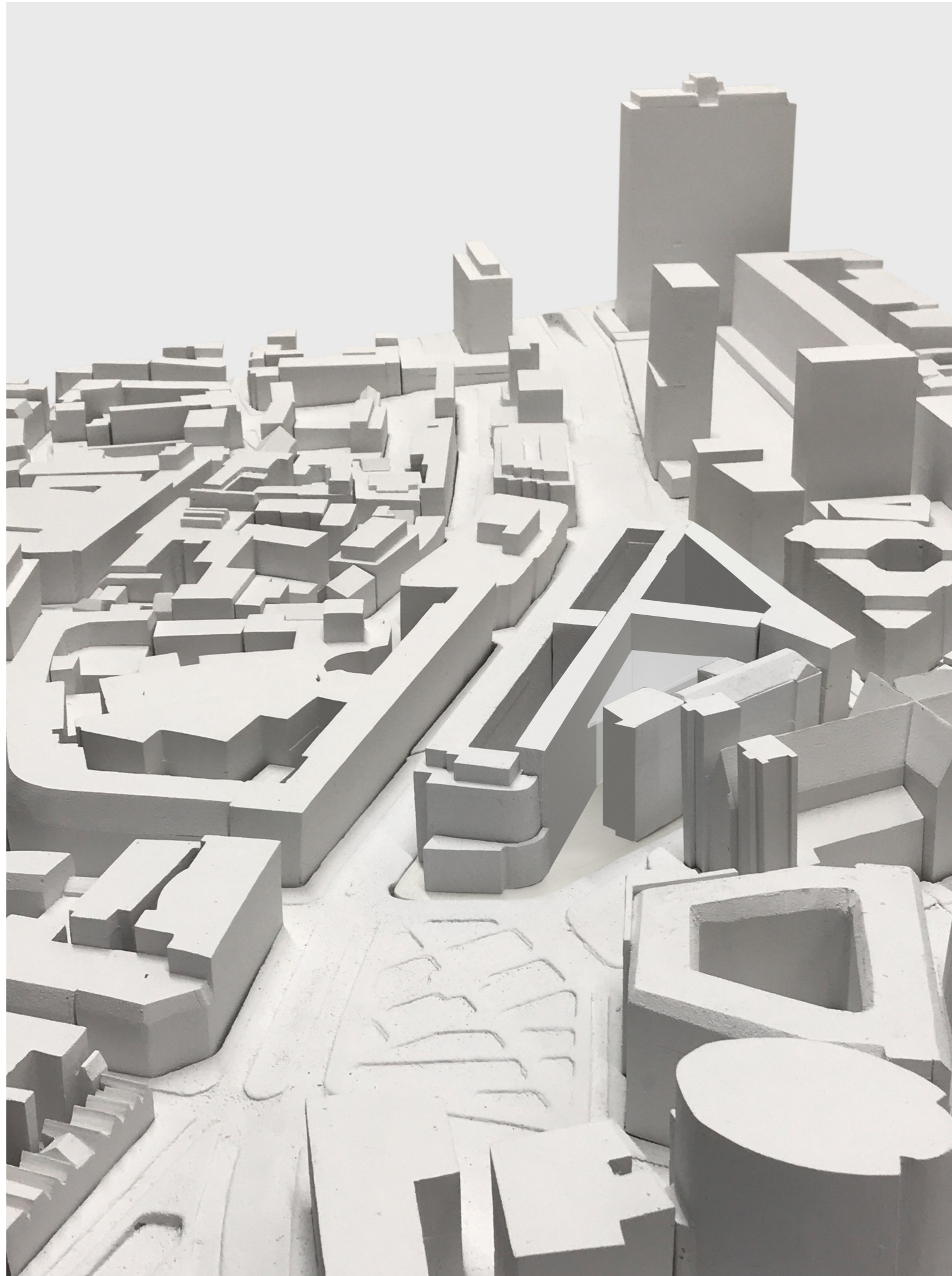
Laminated column with white timber cladding holding the Laminated wooden beams with a steel knife plate joint.



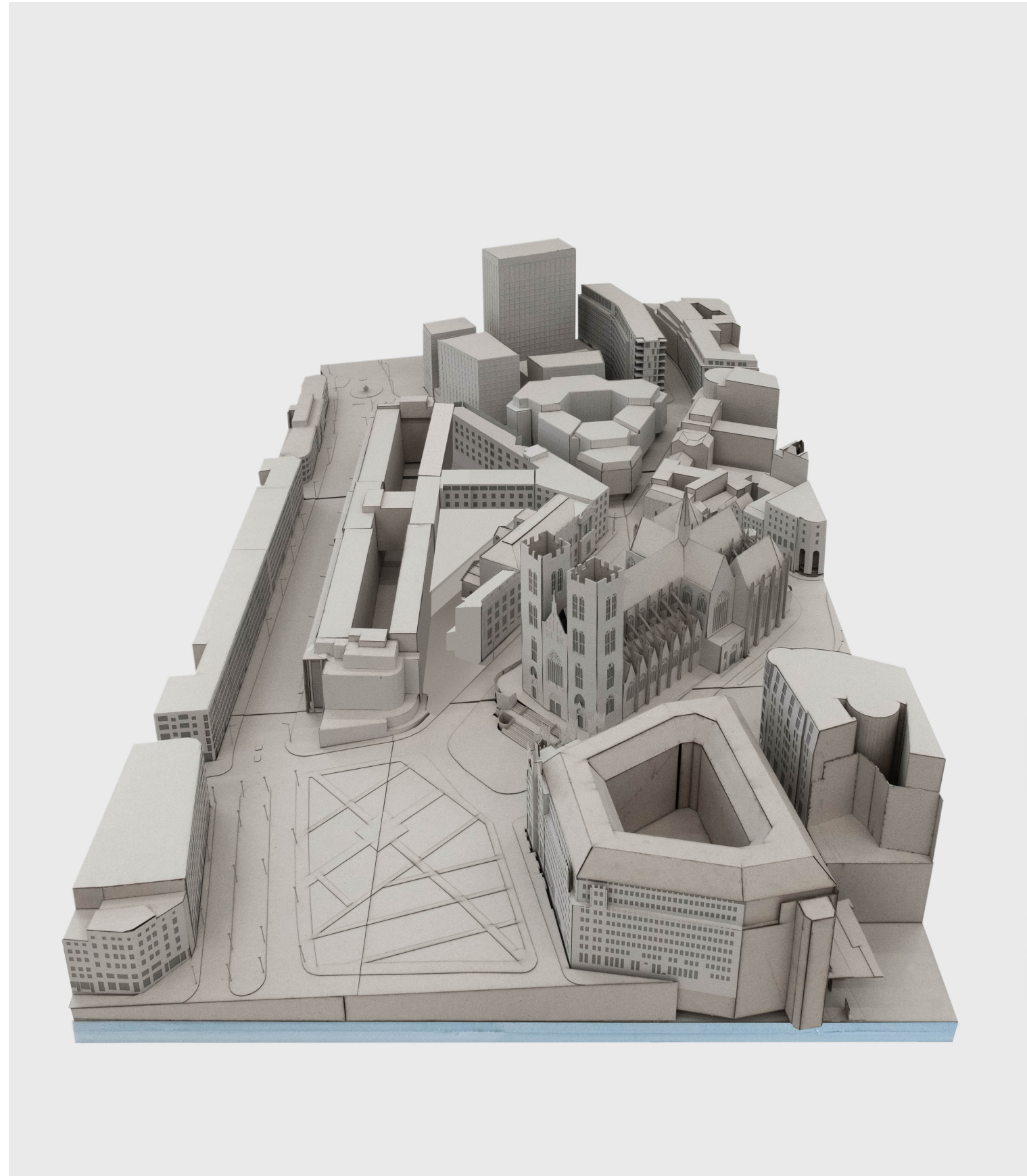
model
1:500



model
1:500



model
1:200



model
1:100



model
1:650

