

P5 DRAWING SET

Hotel New York

Jae Young Song

4743199

17/09/2021

fall semester





INTERGENERATIONAL GAMING CENTER

P5.0 Drawing set
Hotel New York



Jae Young Song

4743199

17/09/2021

fall semester



Plans

Section

Elevation

Fragments

Details



Group site plan



INTERGENERATIONAL GAMING CENTER
DETAIL LEVEL 1:10000



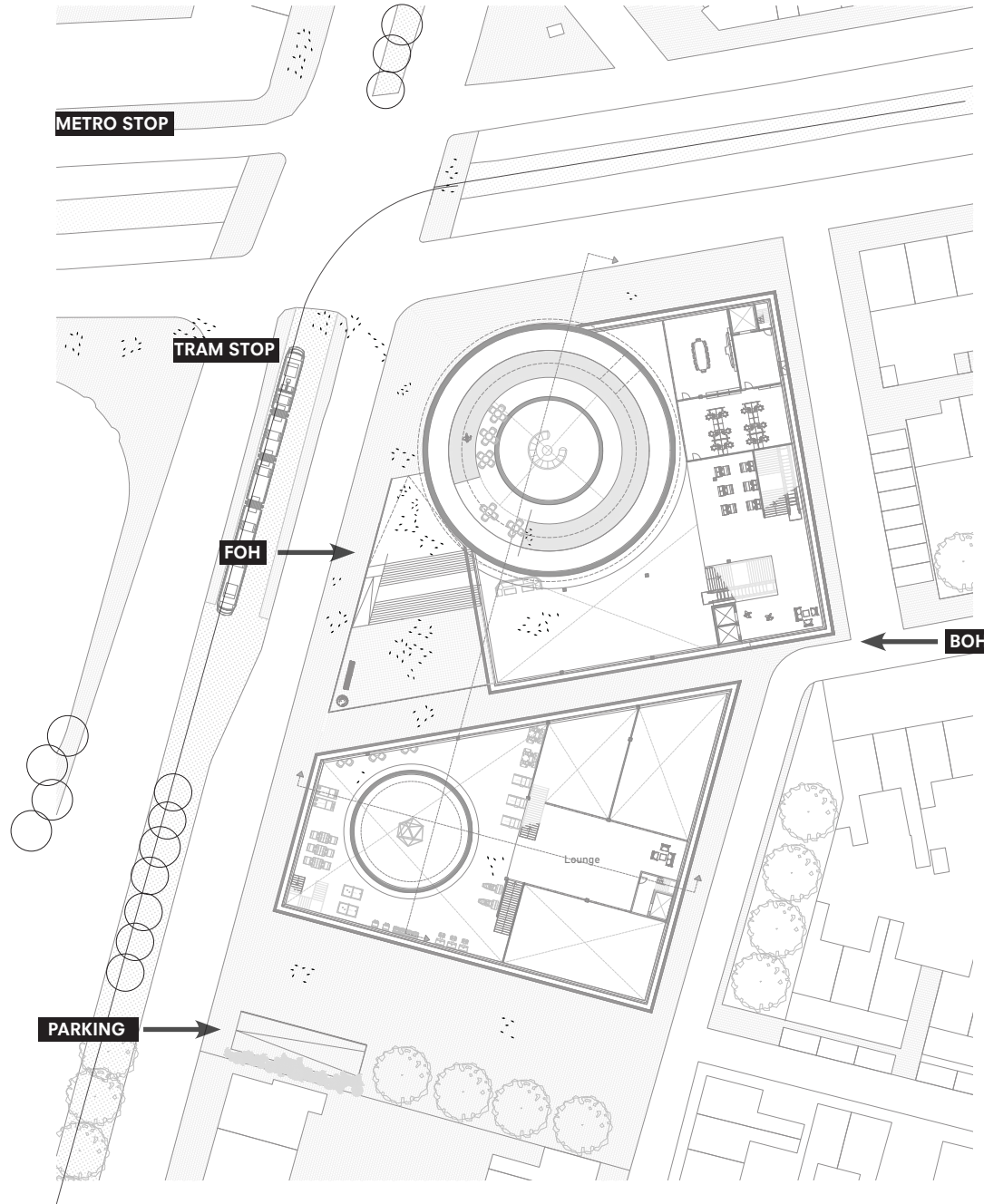
Site plan



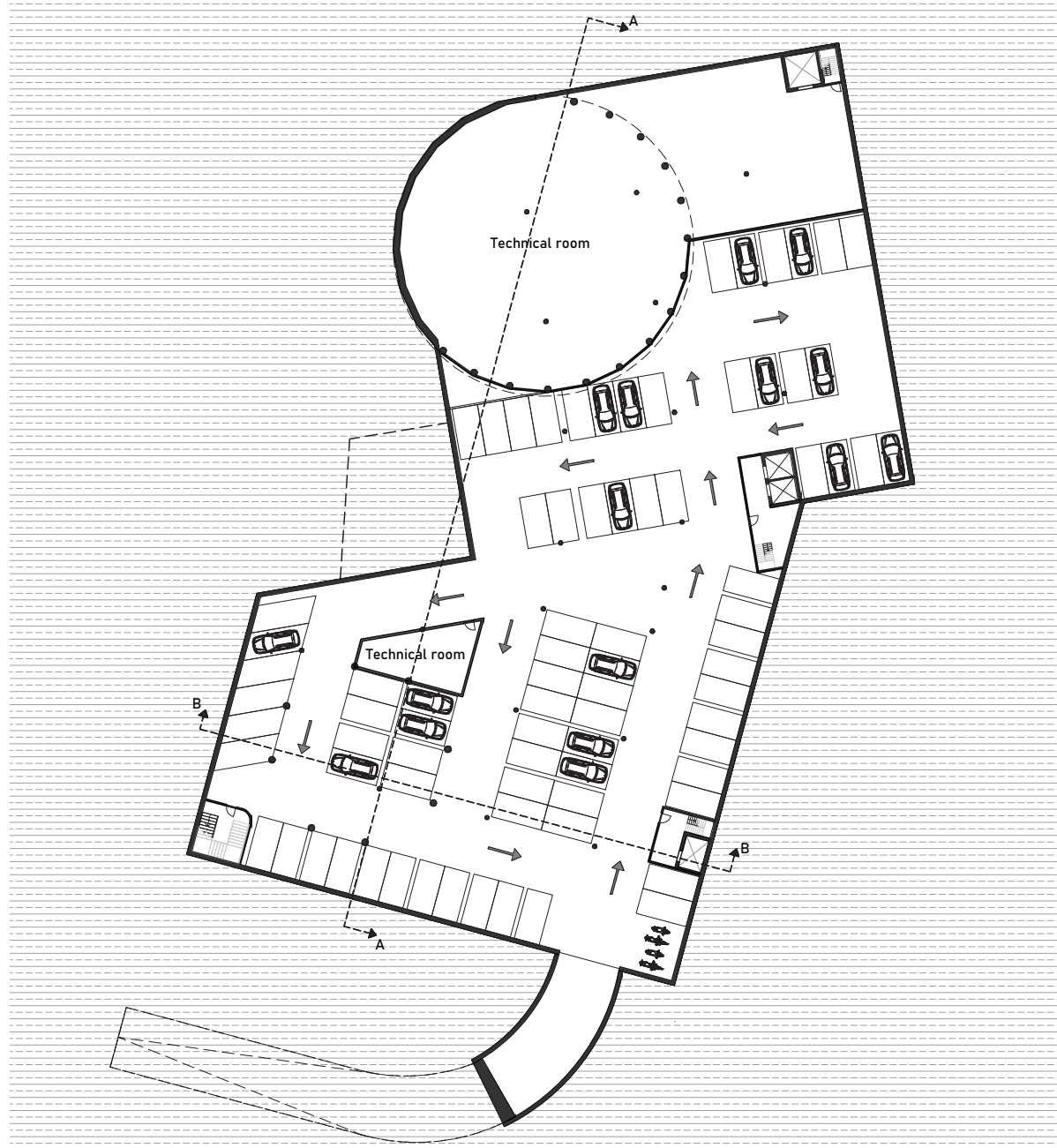
INTERGENERATIONAL GAMING CENTER
DETAIL LEVEL 1:1000



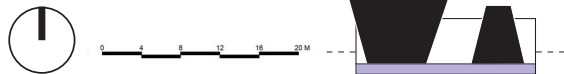
Urban implementation



Parking garage

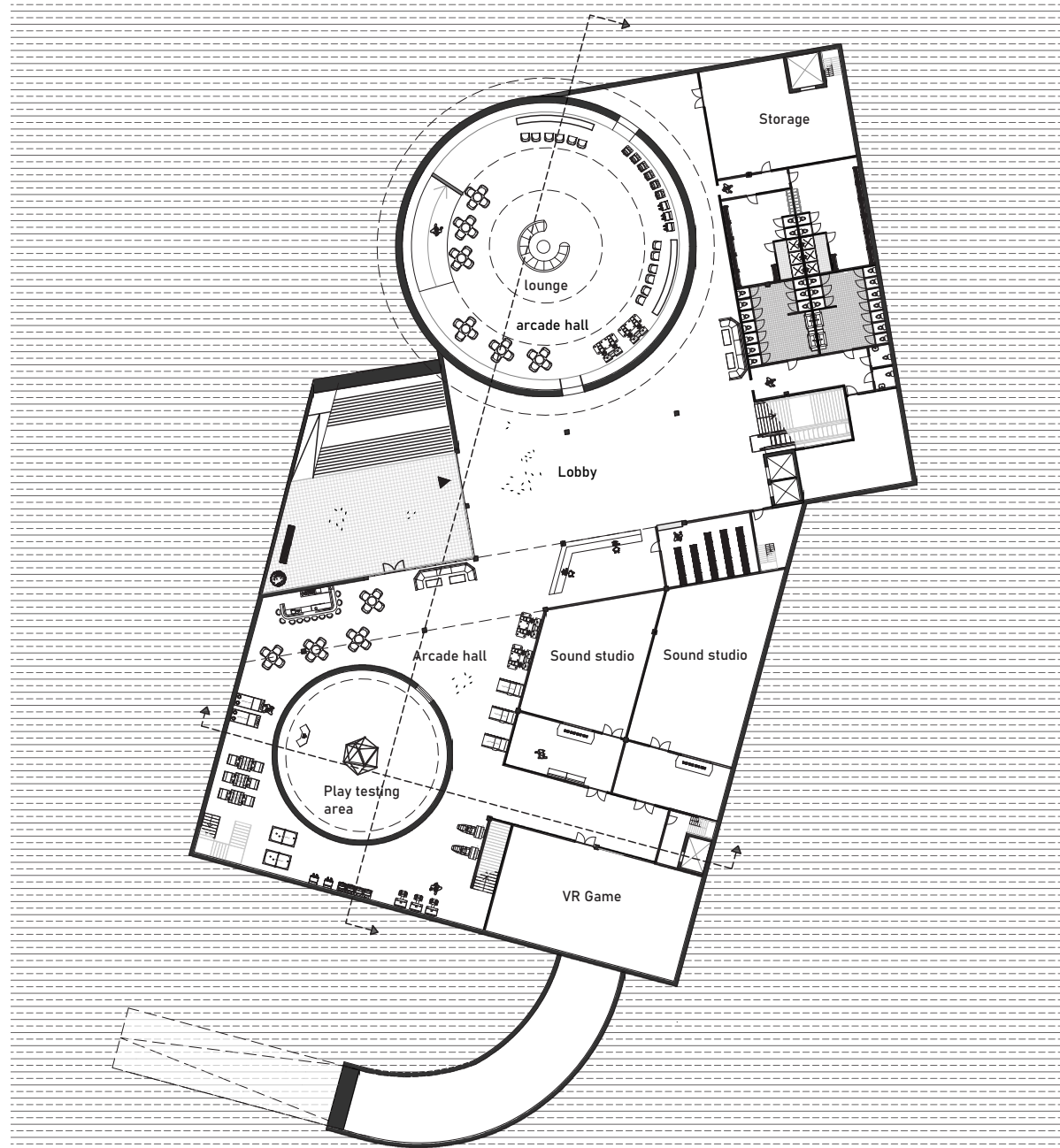


INTERGENERATIONAL GAMING CENTER
DETAIL LEVEL 1:200

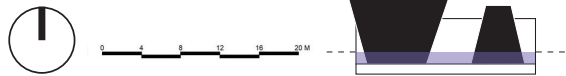


Drawing set

Ground floor

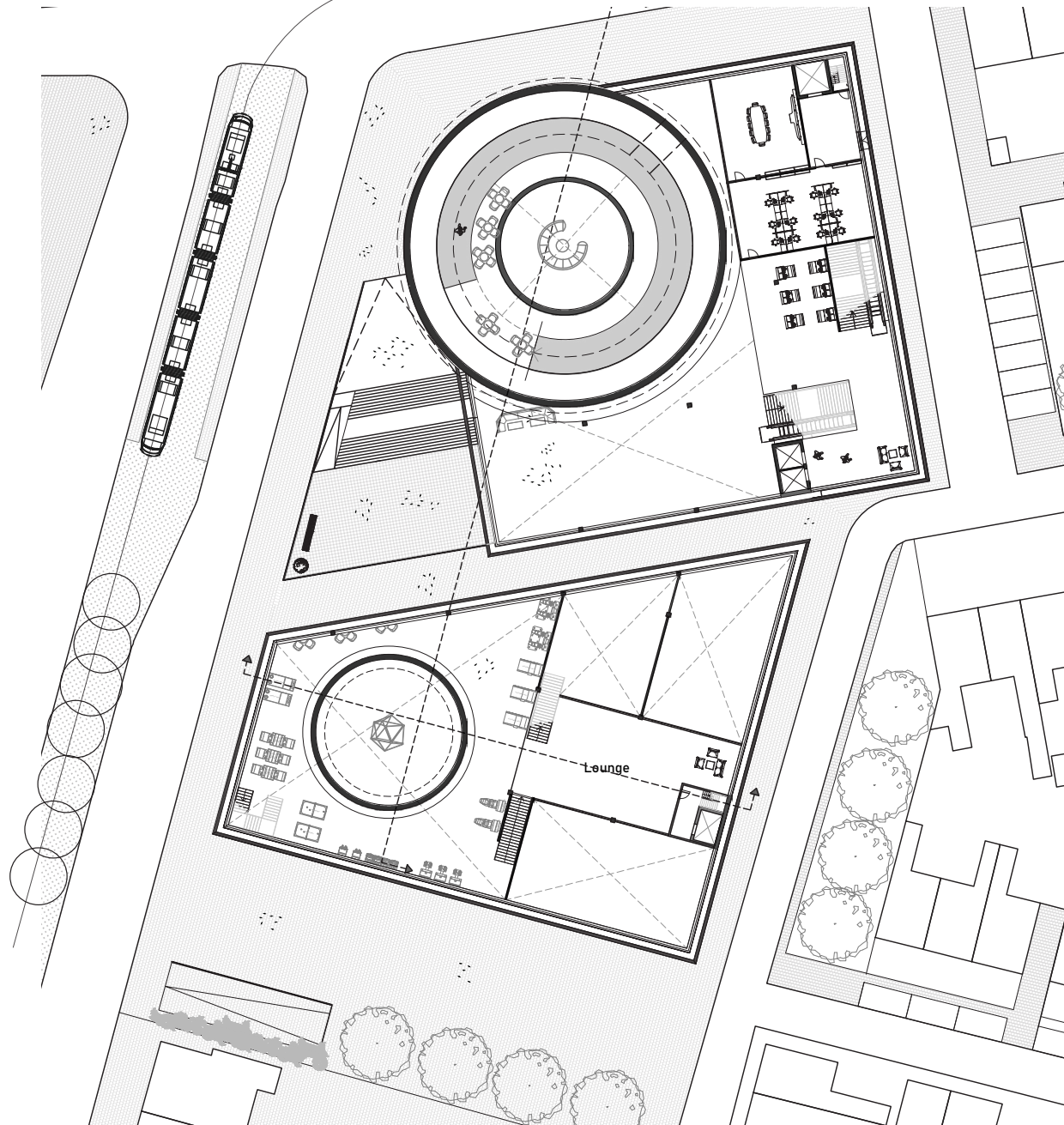


INTERGENERATIONAL GAMING CENTER
DETAIL LEVEL 1:200



Drawing set

First floor



INTERGENERATIONAL GAMING CENTER
DETAIL LEVEL 1:200



0 4 8 12 16 20 M



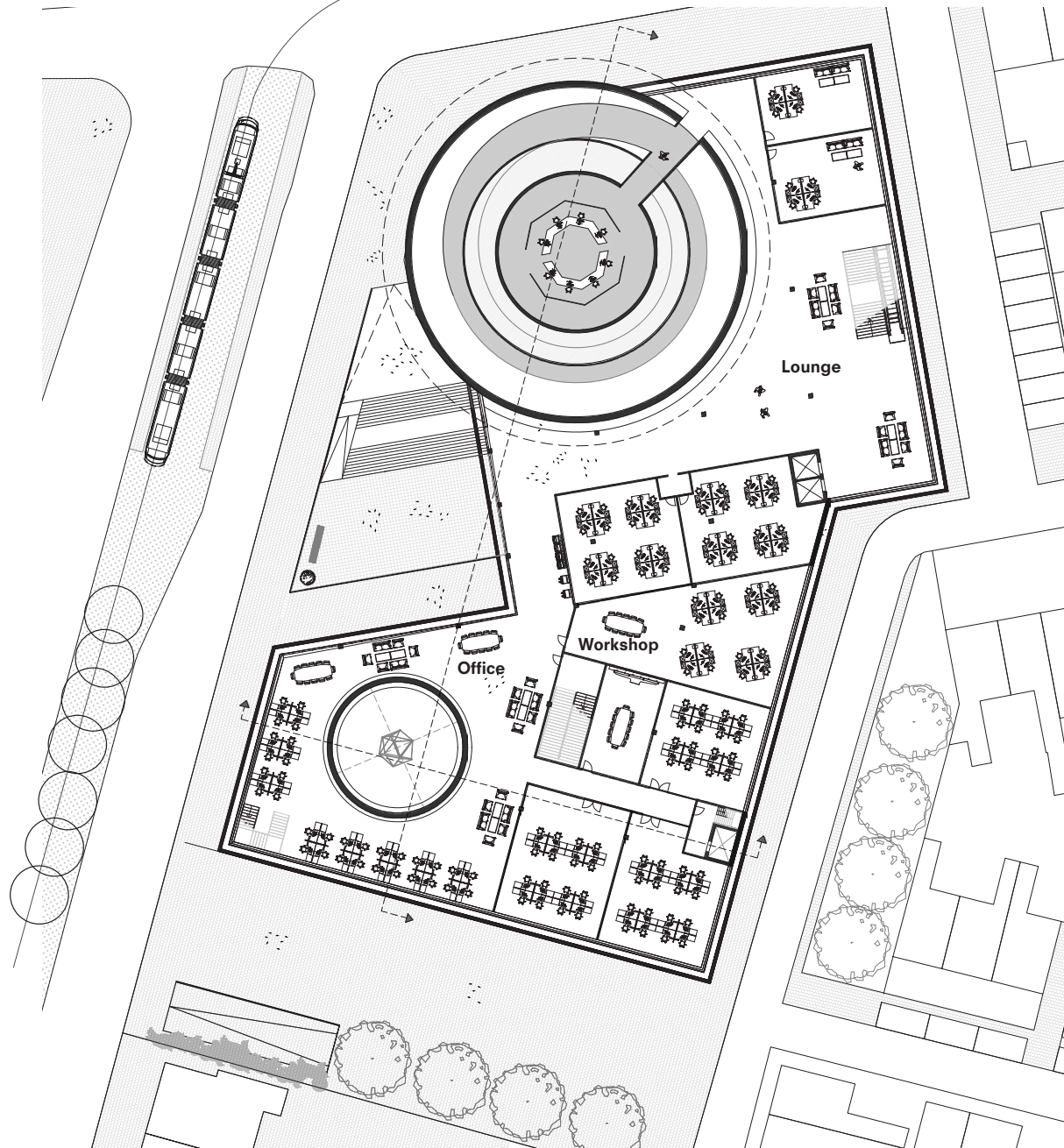
P5 Drawing set



Hotel New York

Drawing set

Second floor



INTERGENERATIONAL GAMING CENTER
DETAIL LEVEL 1:200



0 4 8 12 16 20 M



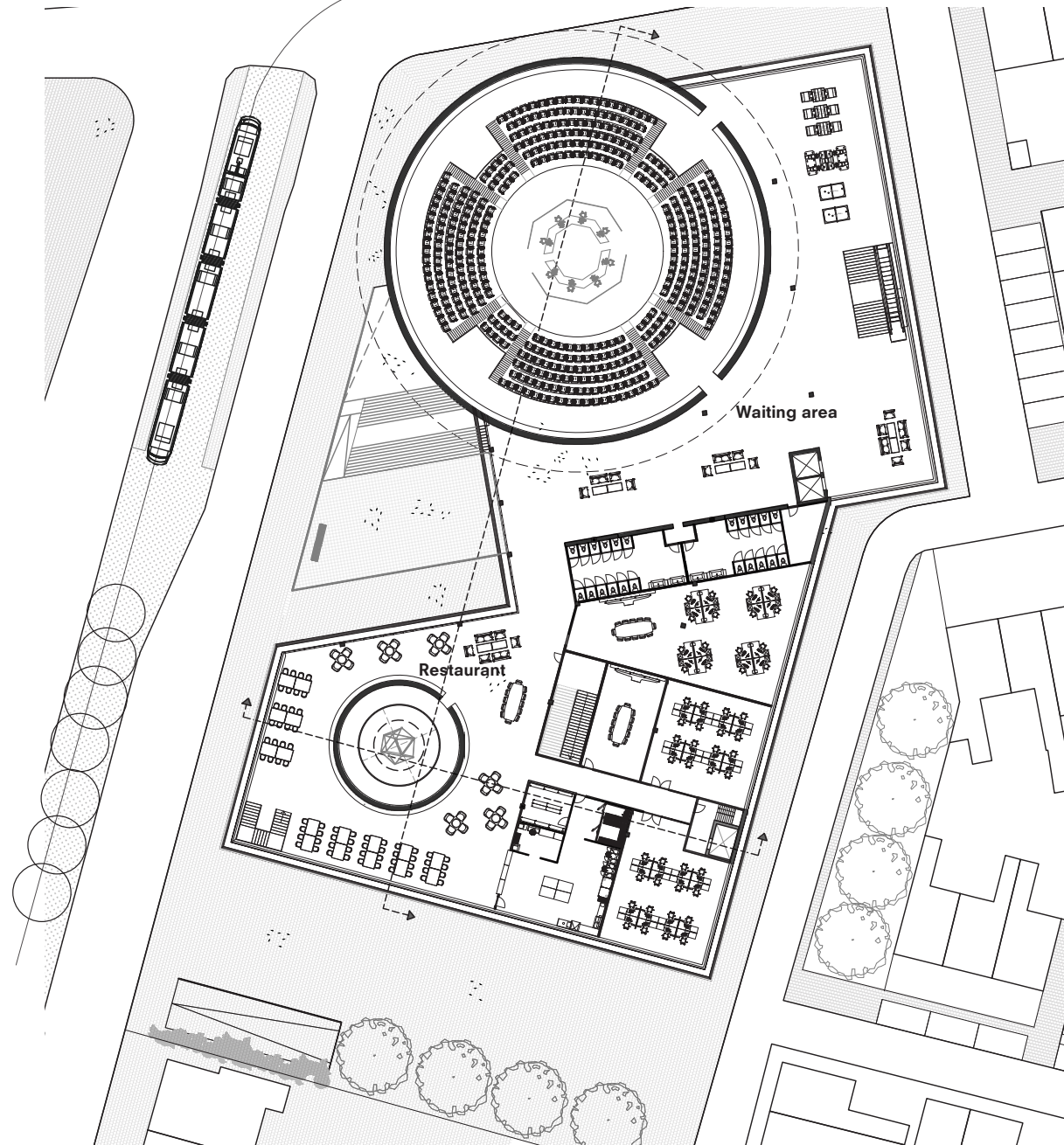
P5 Drawing set



Hotel New York

Drawing set

Third floor



INTERGENERATIONAL GAMING CENTER
DETAIL LEVEL 1:200



0 4 8 12 16 20 M



P5 Drawing set



Hotel New York

Plans

Section

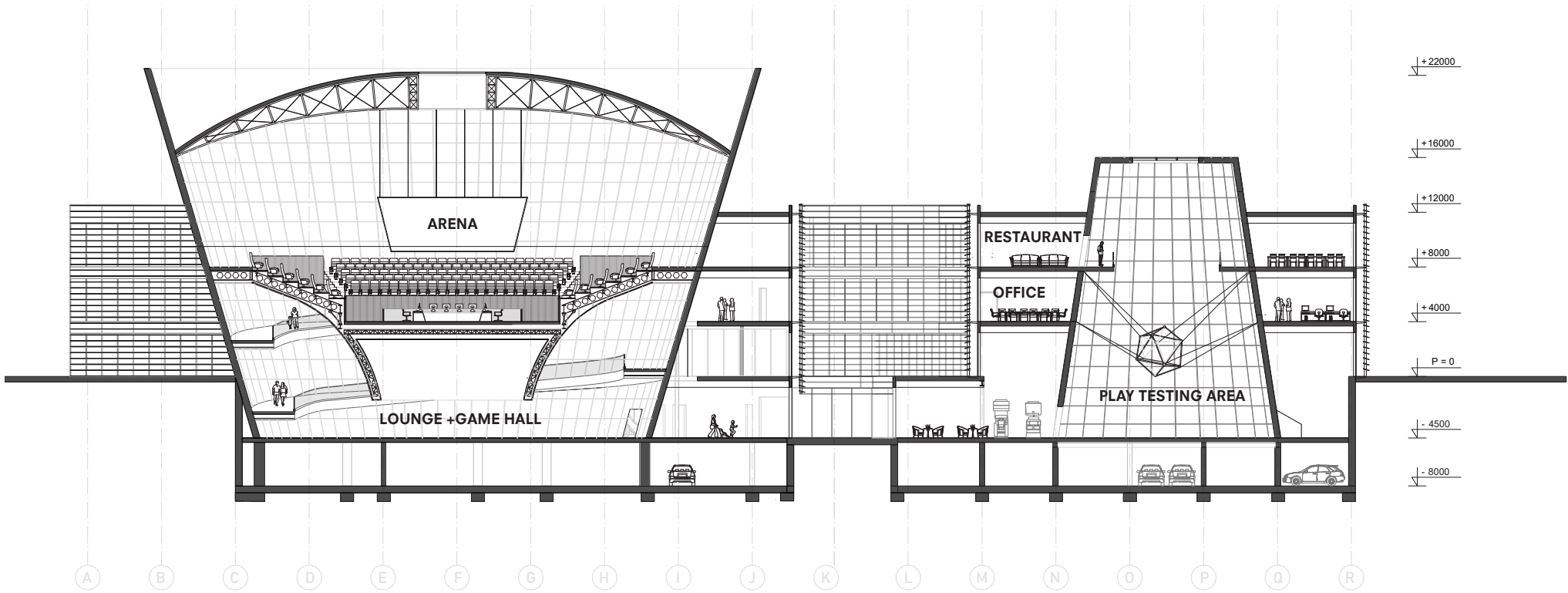
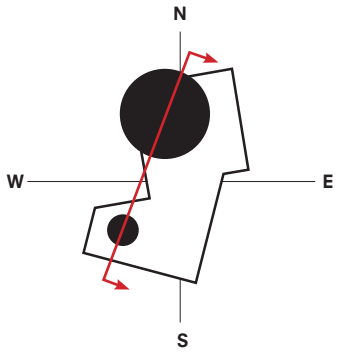
Elevation

Fragments

Details

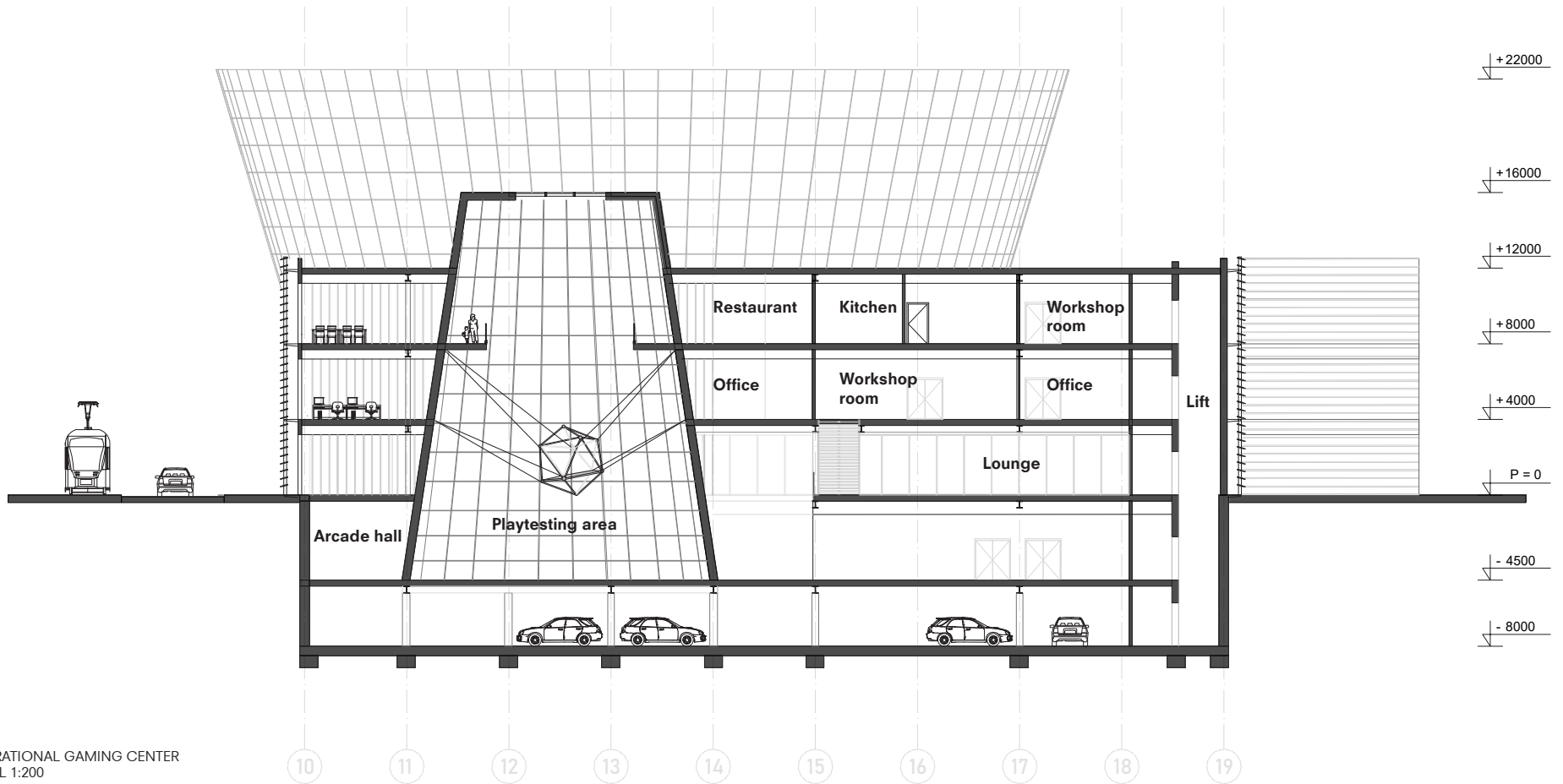
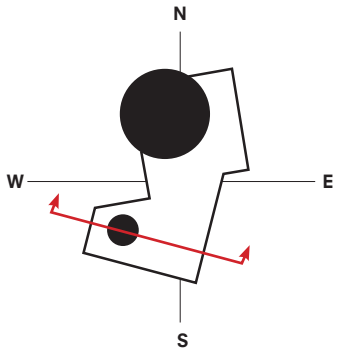


Drawing set
Section A-A



INTERGENERATIONAL GAMING CENTER
DETAIL LEVEL 1:200

Drawing set
Section B-B



INTERGENERATIONAL GAMING CENTER
DETAIL LEVEL 1:200



Plans

Section

Elevation

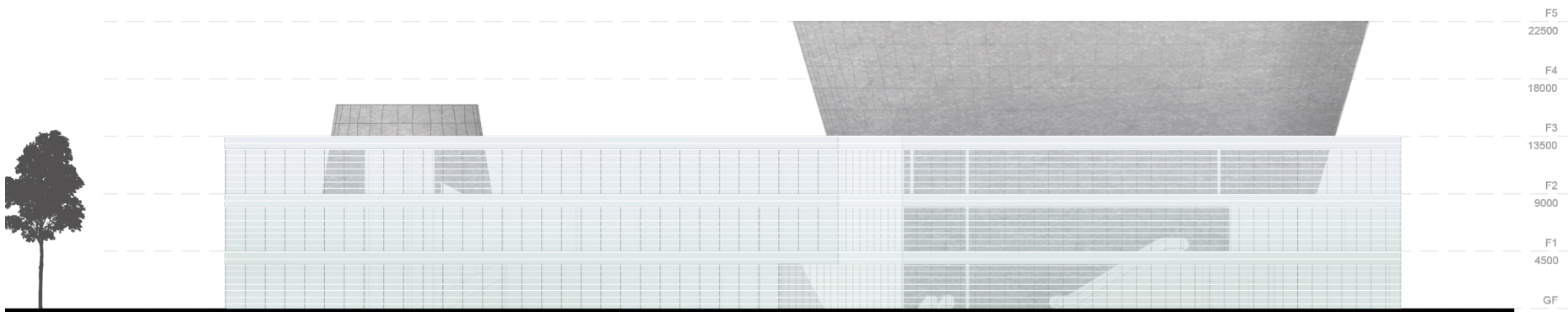
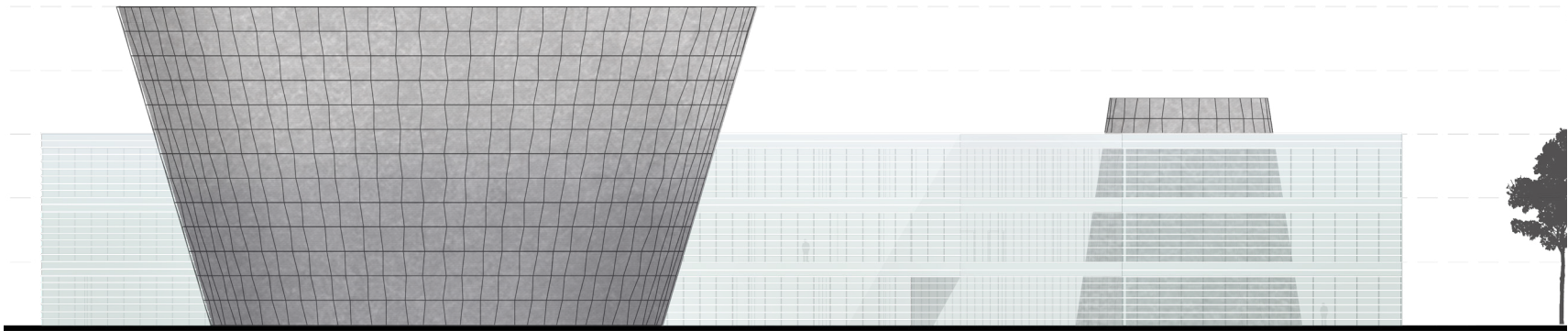
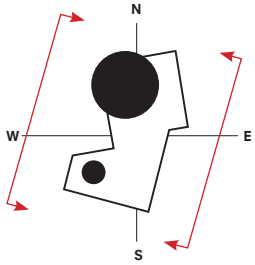
Fragments

Details



Drawing set

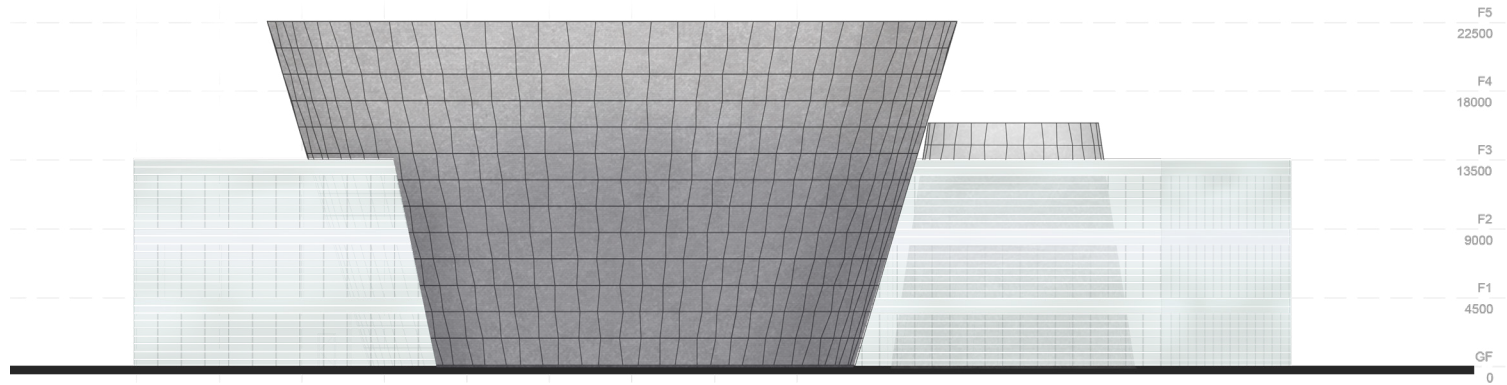
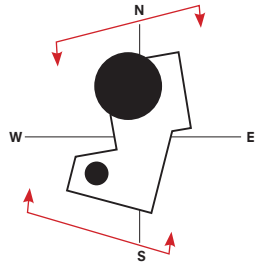
Elevations



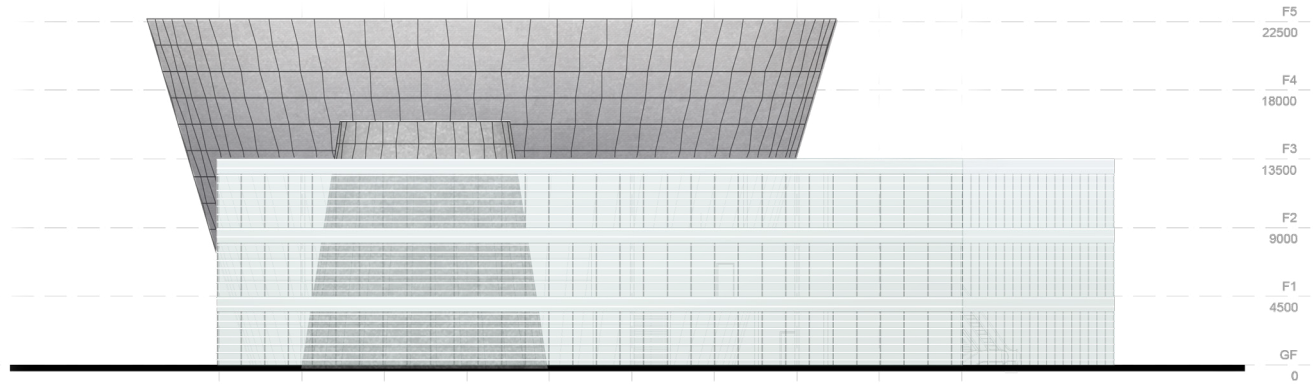
INTERGENERATIONAL GAMING CENTER
DETAIL LEVEL 1:200



Elevations



North elevation



South-west elevation



Plans

Section

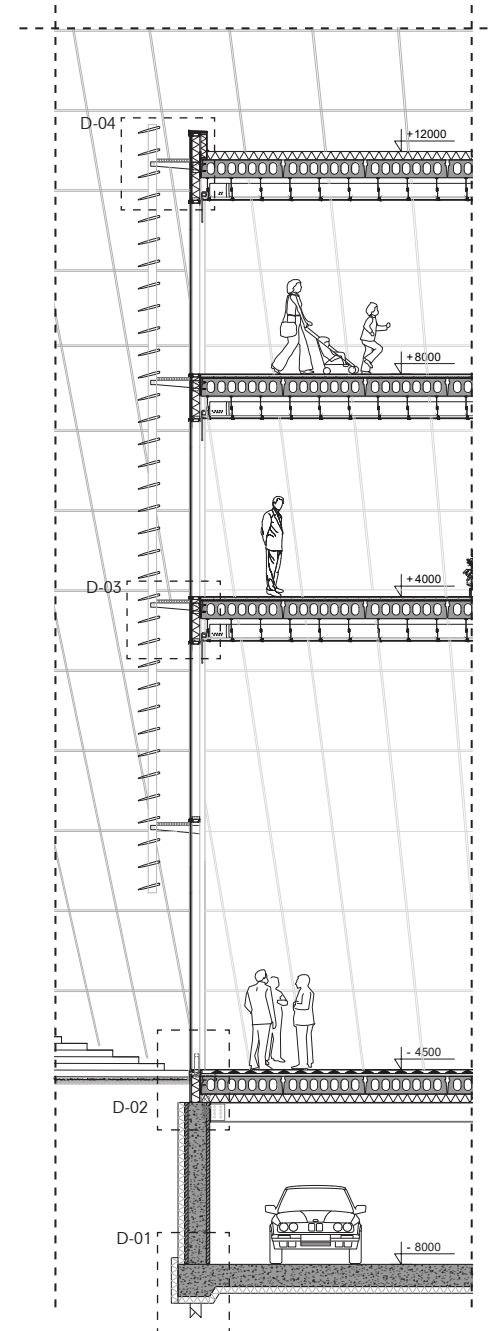
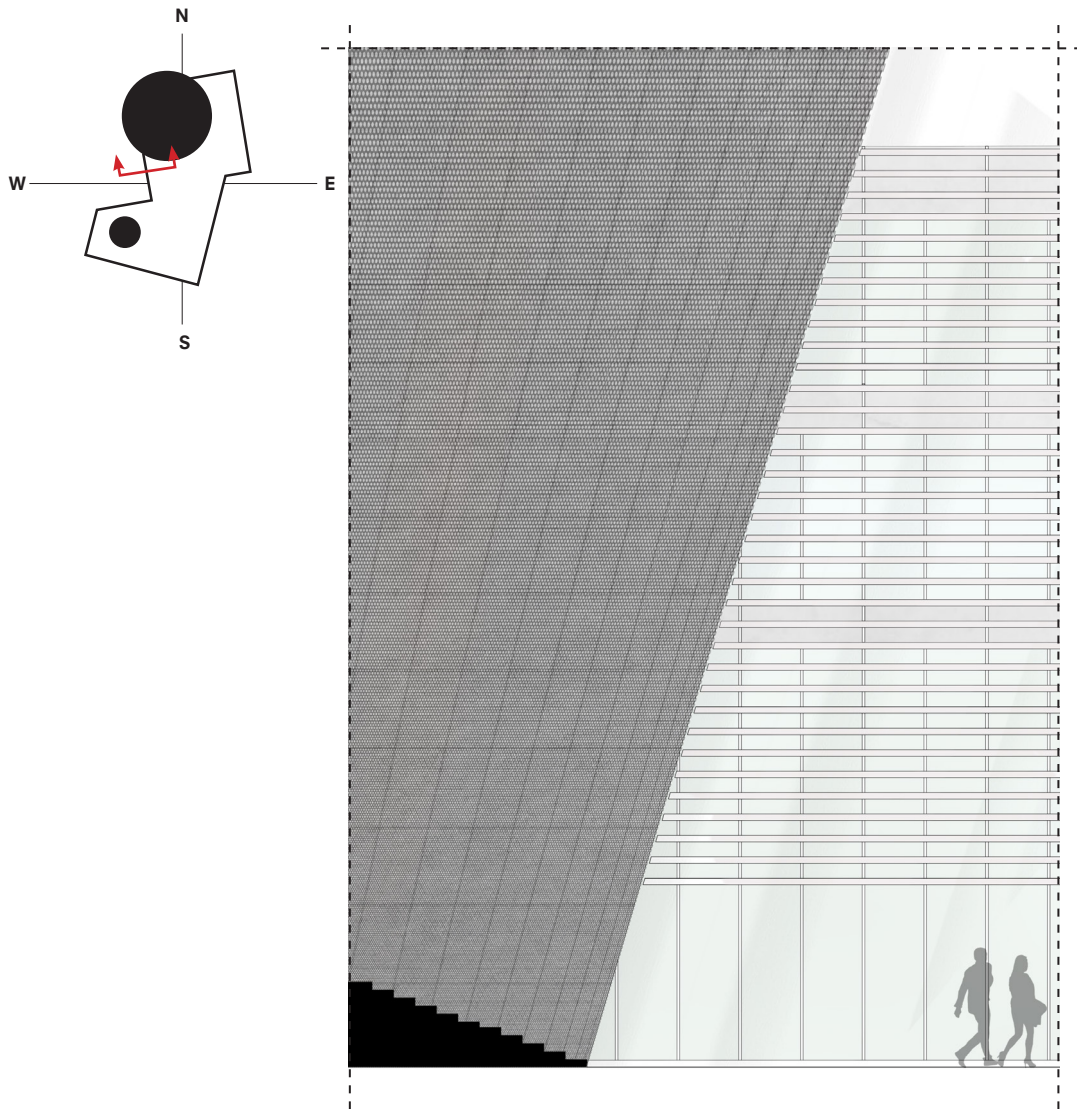
Elevation

Fragments

Details



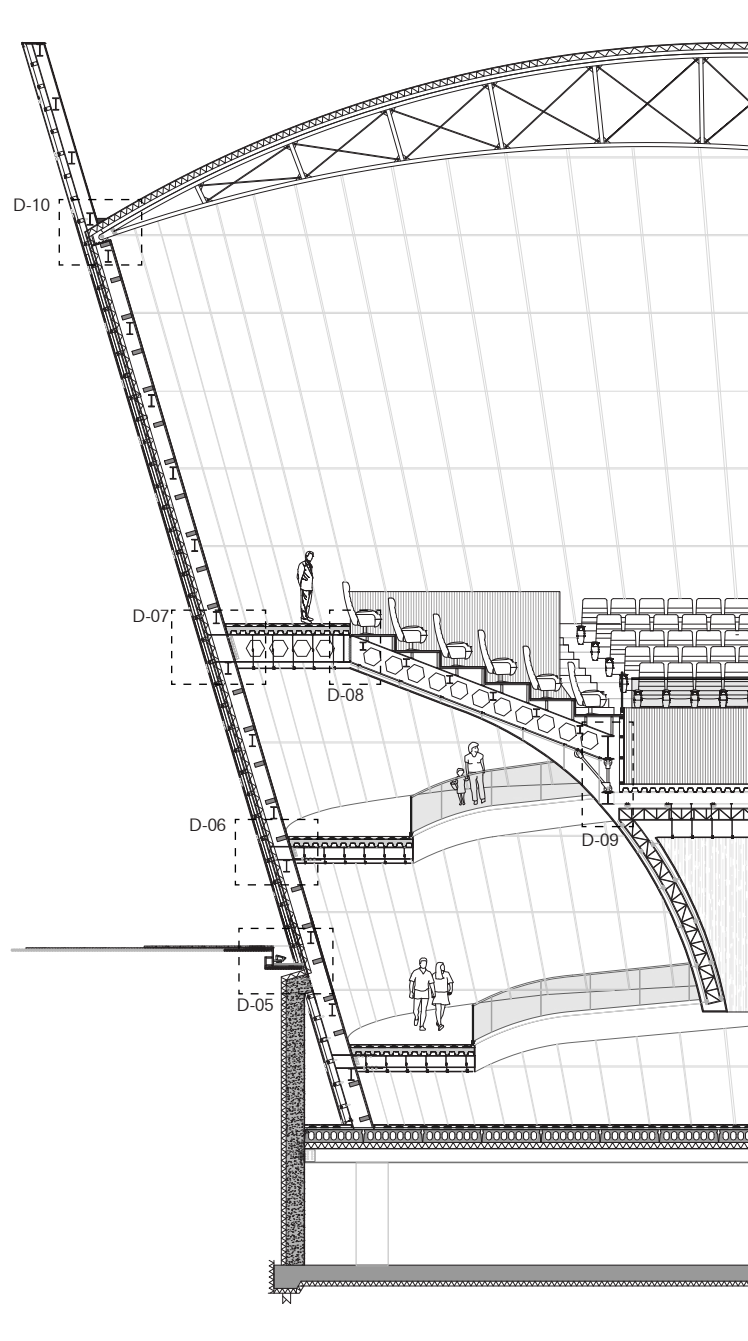
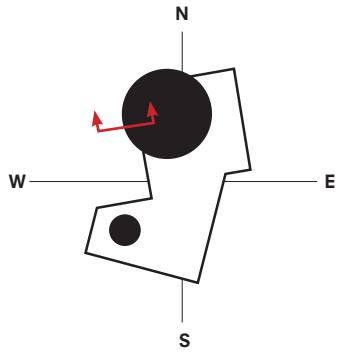
Envelope fragment 1



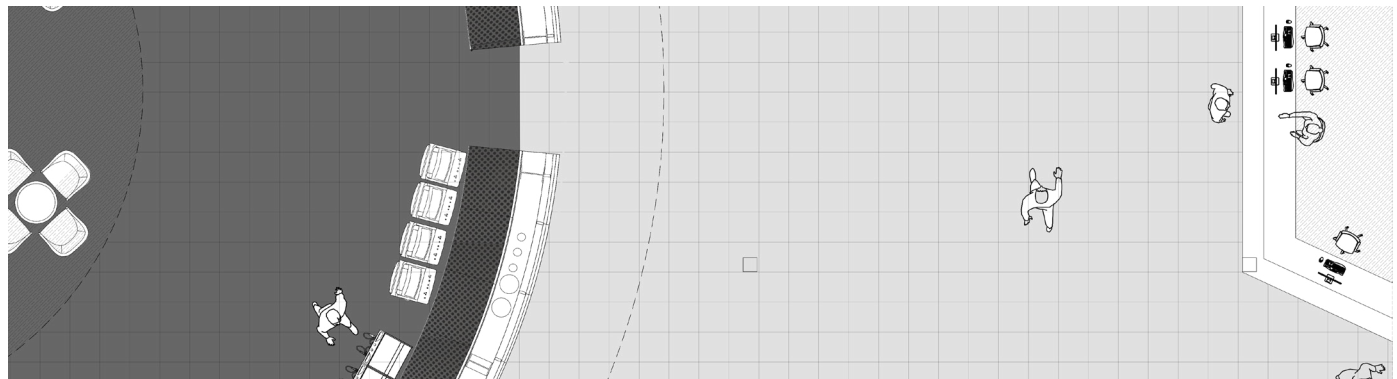
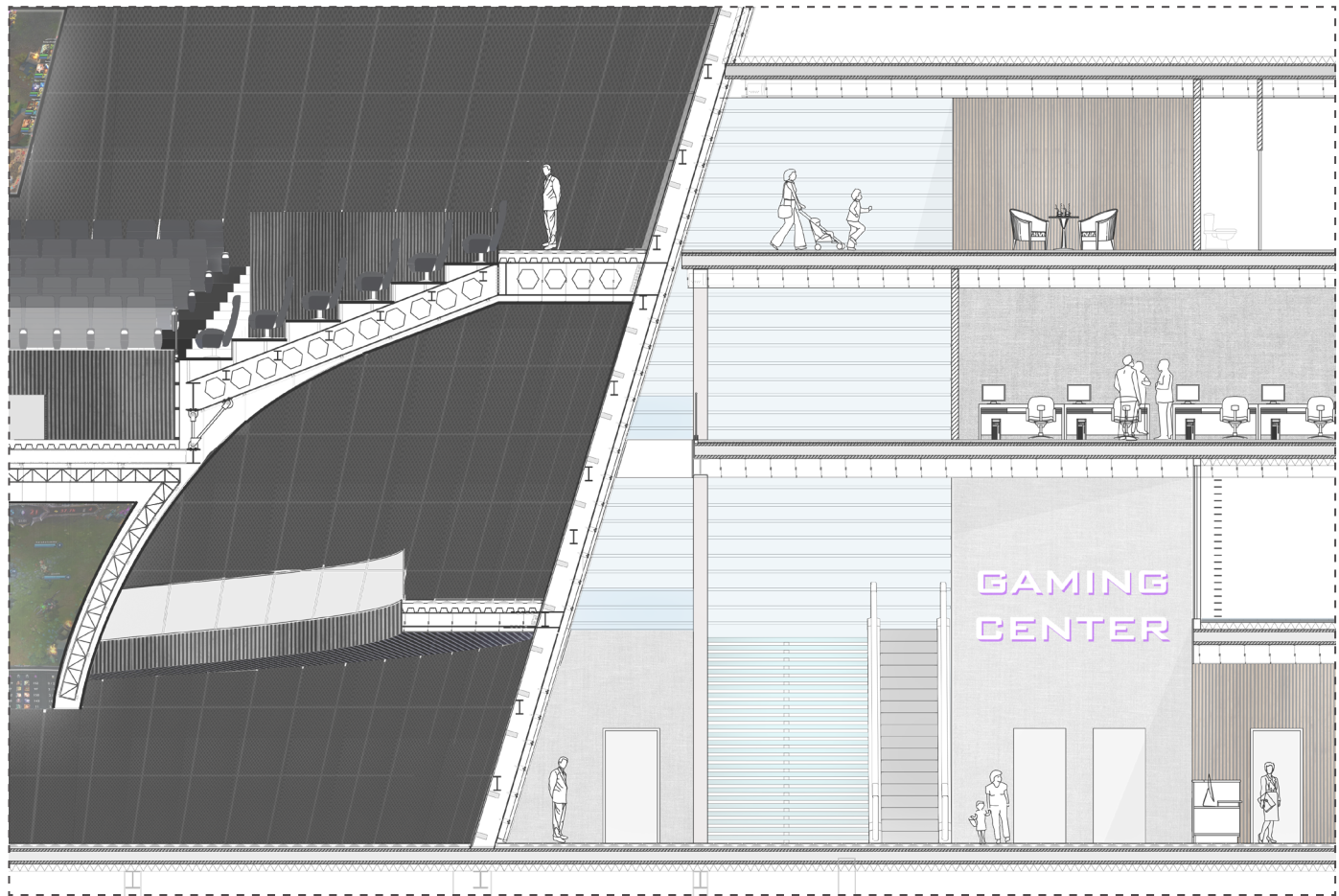
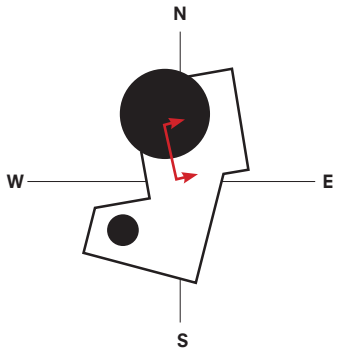
INTERGENERATIONAL GAMING CENTER
DETAIL LEVEL 1:20



Envelope fragment 2



Interior fragment



INTERGENERATIONAL GAMING CENTER
DETAIL LEVEL 1:50



Plans

Section

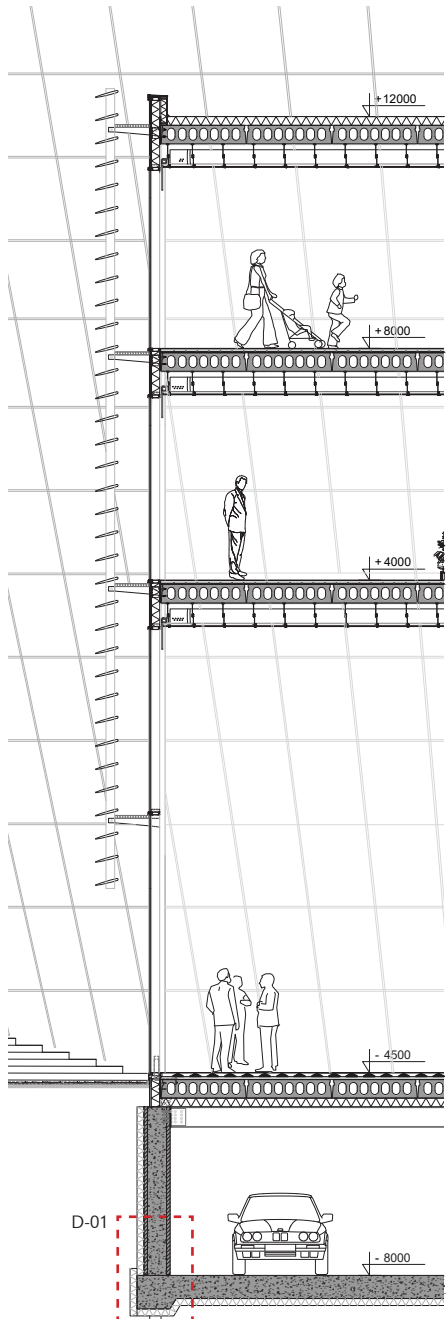
Elevation

Fragments

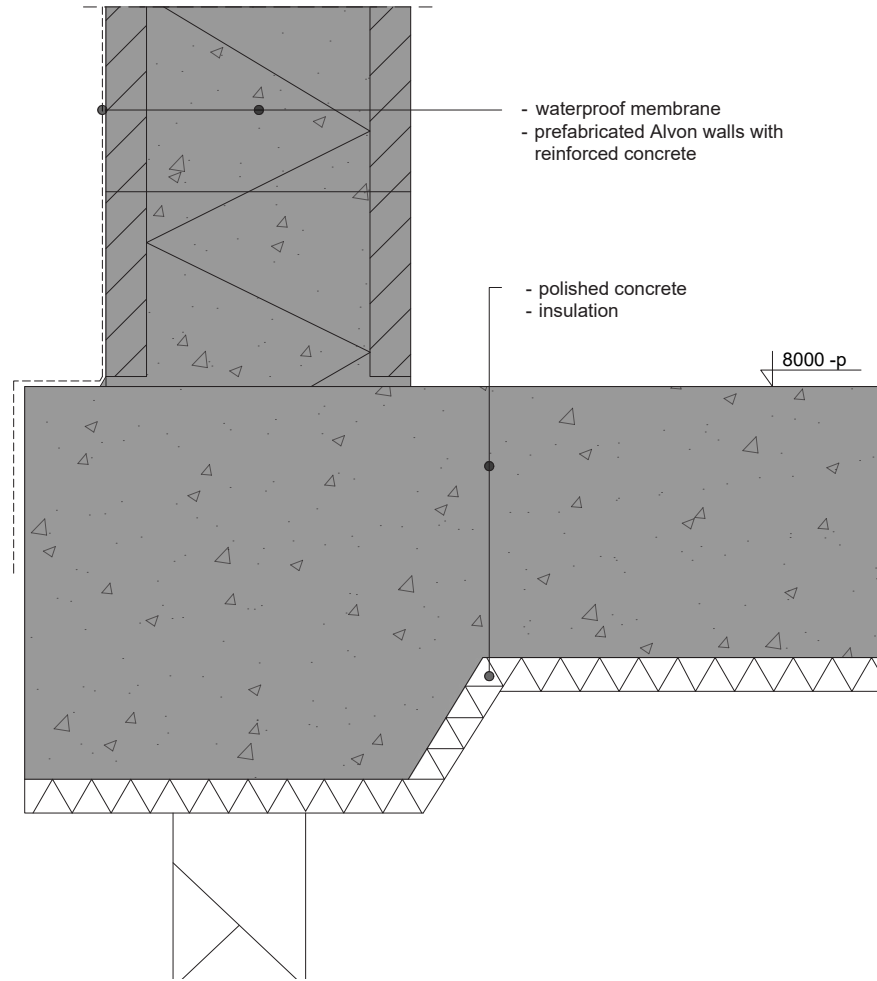
Details



D-01



INTERGENERATIONAL GAMING CENTER
DETAIL LEVEL 1:5



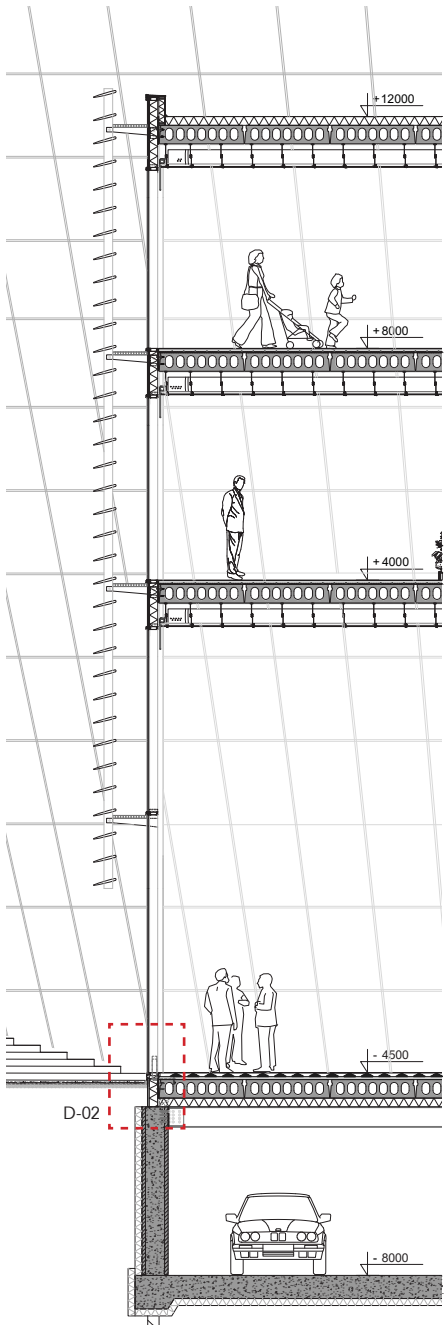
- waterproof membrane
- prefabricated Alvon walls with reinforced concrete

- polished concrete
- insulation

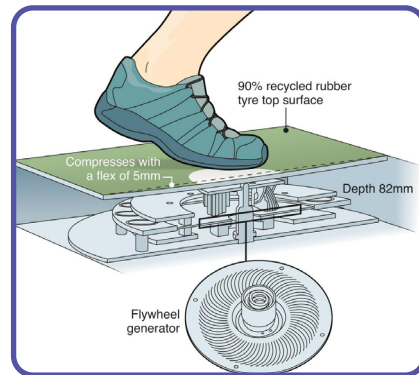
8000 -p



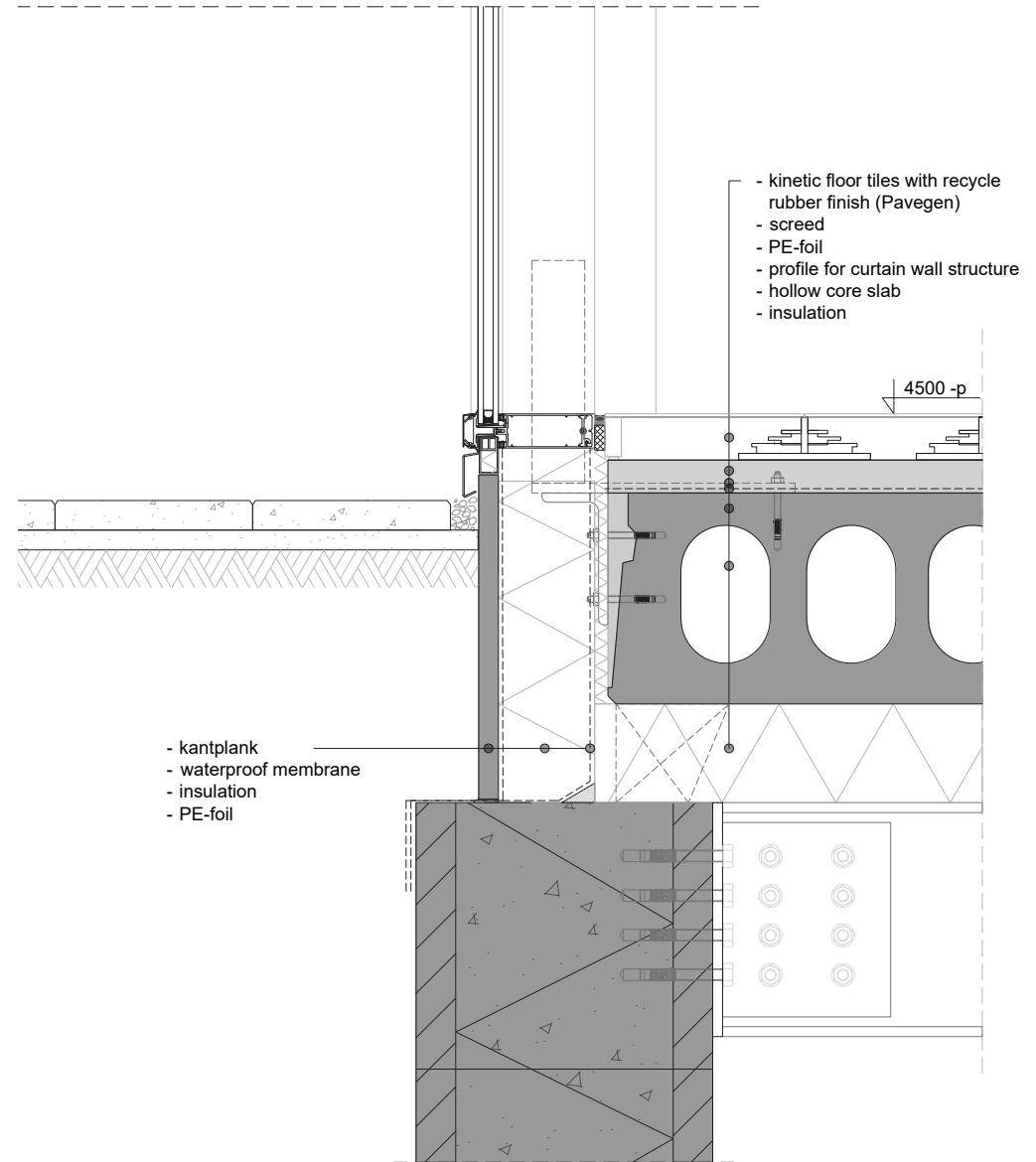
D-02



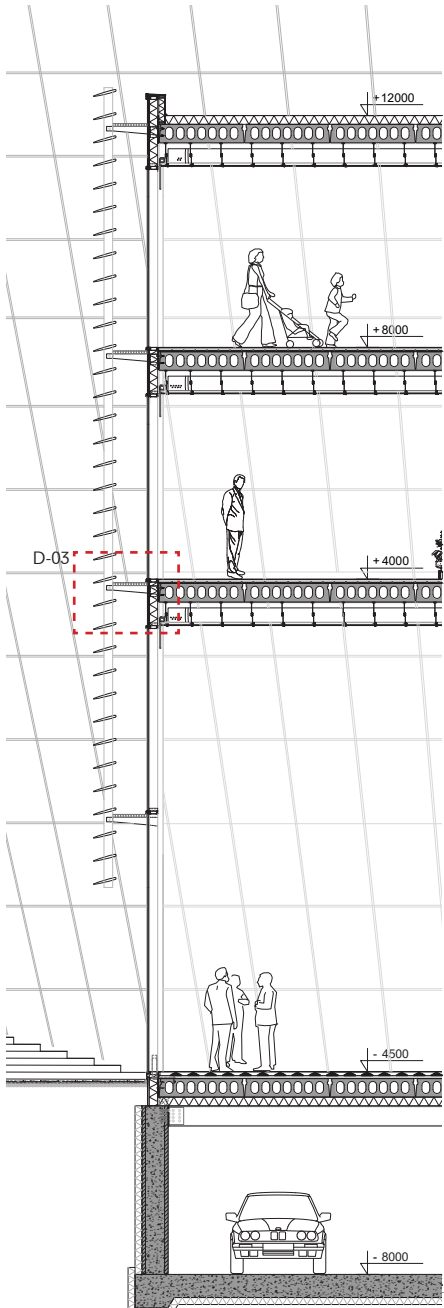
INTERGENERATIONAL GAMING CENTER
DETAIL LEVEL 1:5



Kinetic floor tiles
Every single step generates approximately (8 watts) 3 joules of usable energy.
Source: Pavegen



D-03

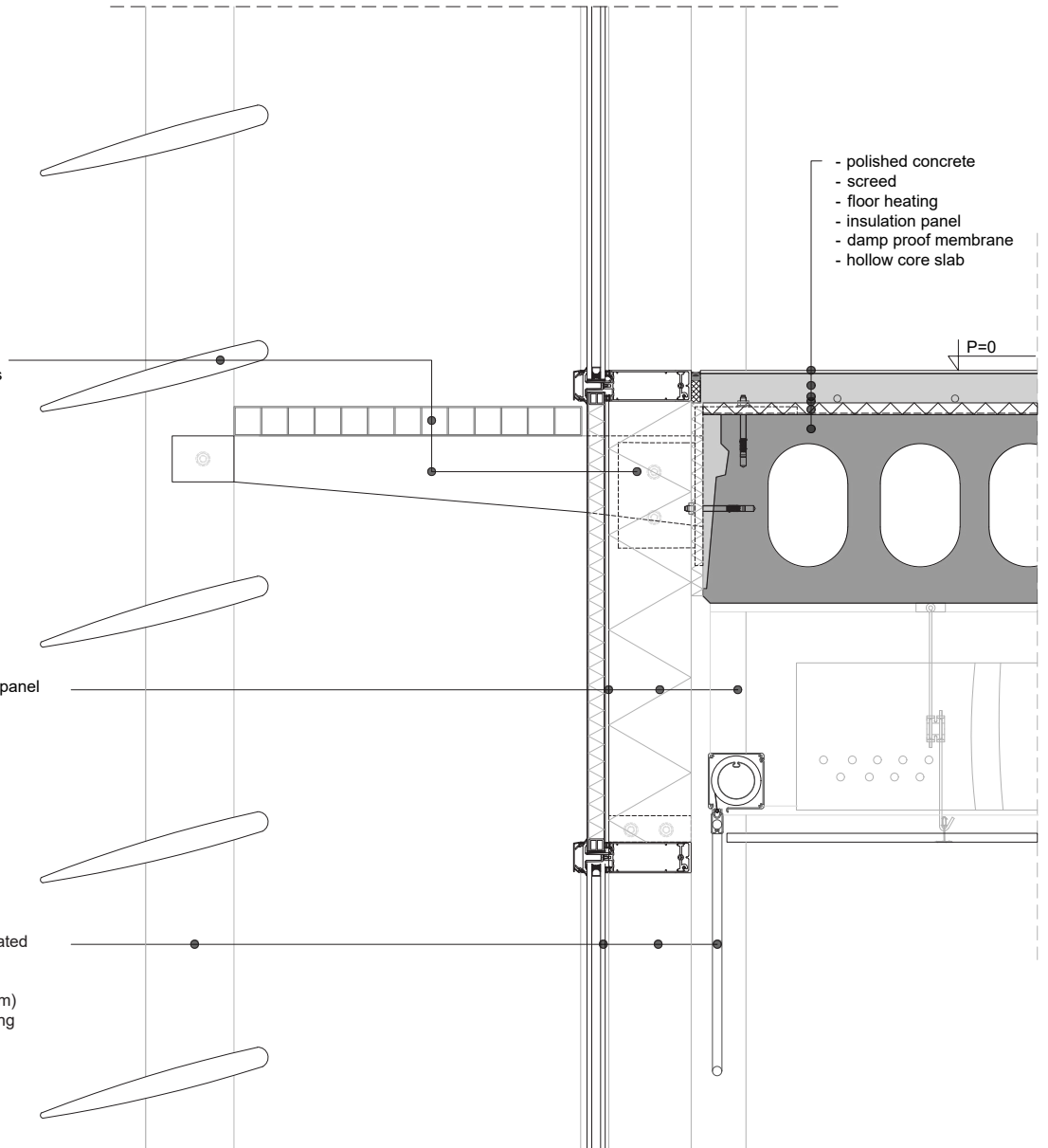


INTERGENERATIONAL GAMING CENTER
DETAIL LEVEL 1:5

- horizontal fins 400mm
- steel grill for maintenance access
- steel profile for lamella
- curtain wall fastening to structure

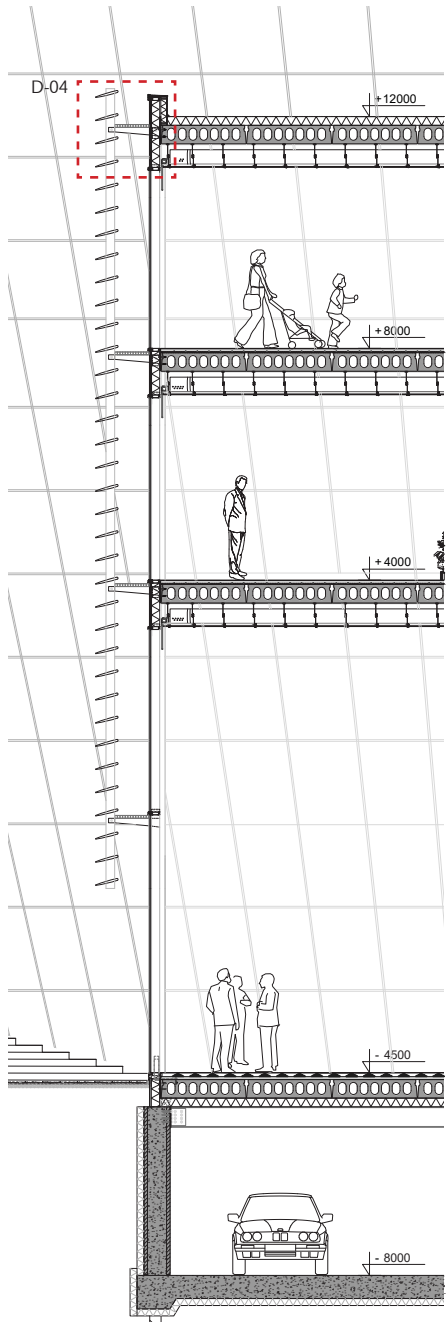
- aluminium sandwich panel
- rockwool insulation
- HEA 360 beam

- polyester Powder Coated aluminium lamella
- double glazing
- curtain wall (aluminium)
- automated sun shading

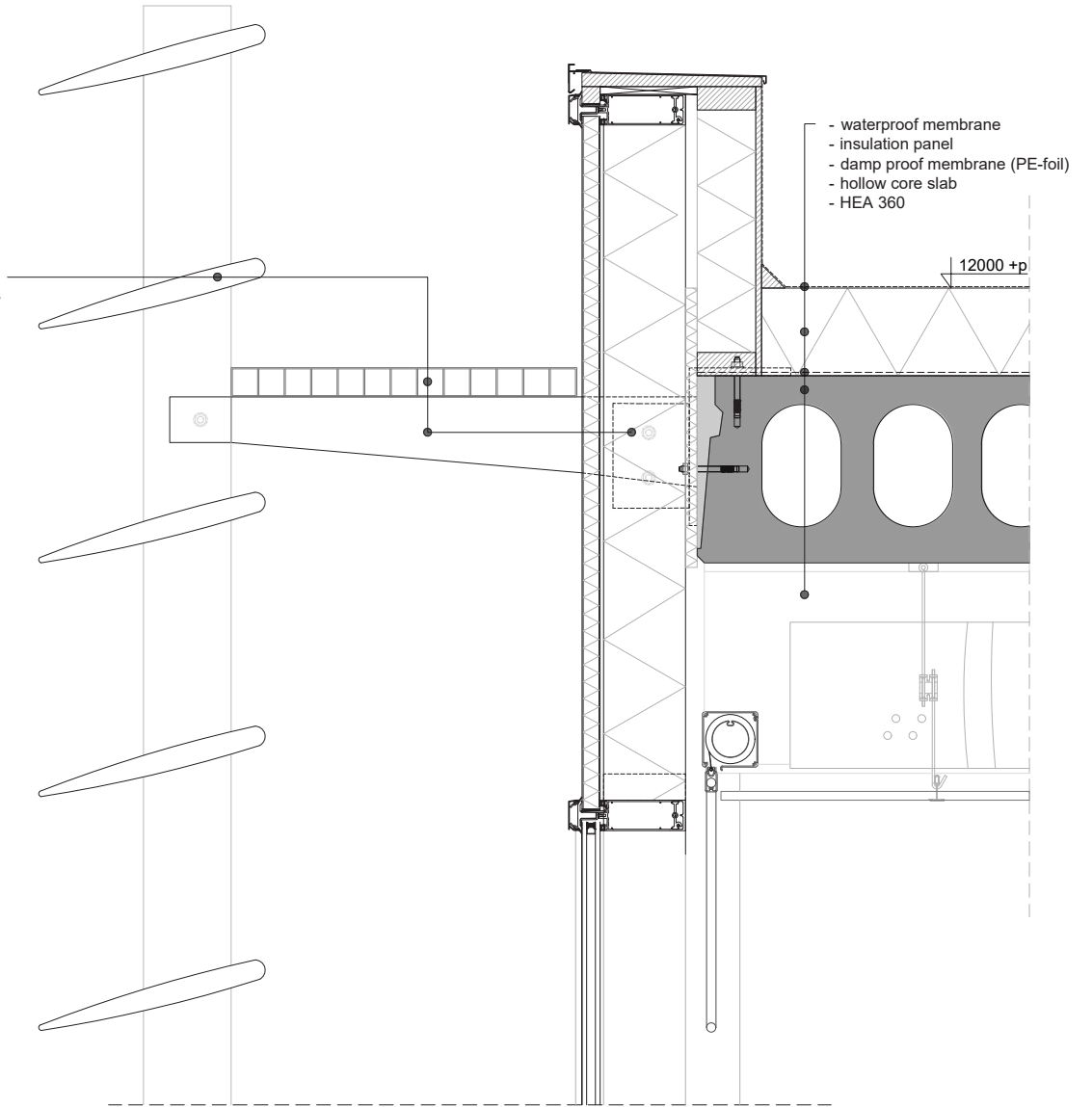


- polished concrete
- screed
- floor heating
- insulation panel
- damp proof membrane
- hollow core slab

D-04

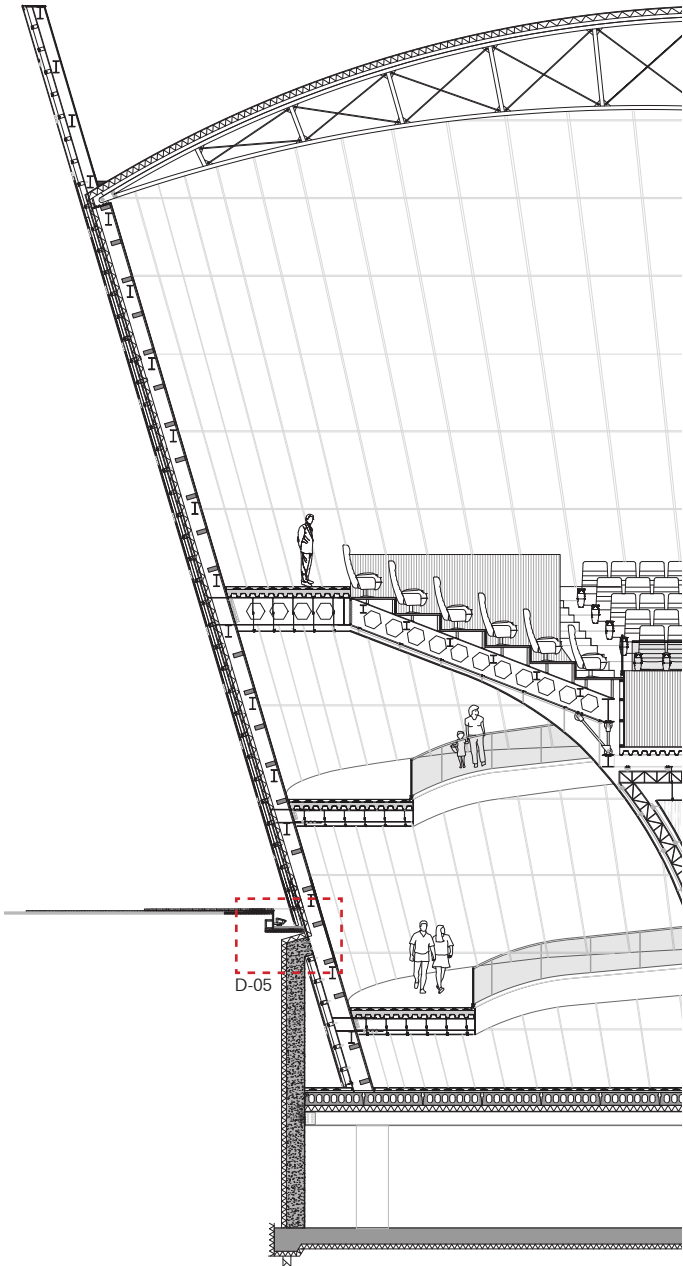


- horizontal fins 400mm
- steel grill for maintenance access
- steel profile for lamella
- curtain wall fastening to structure

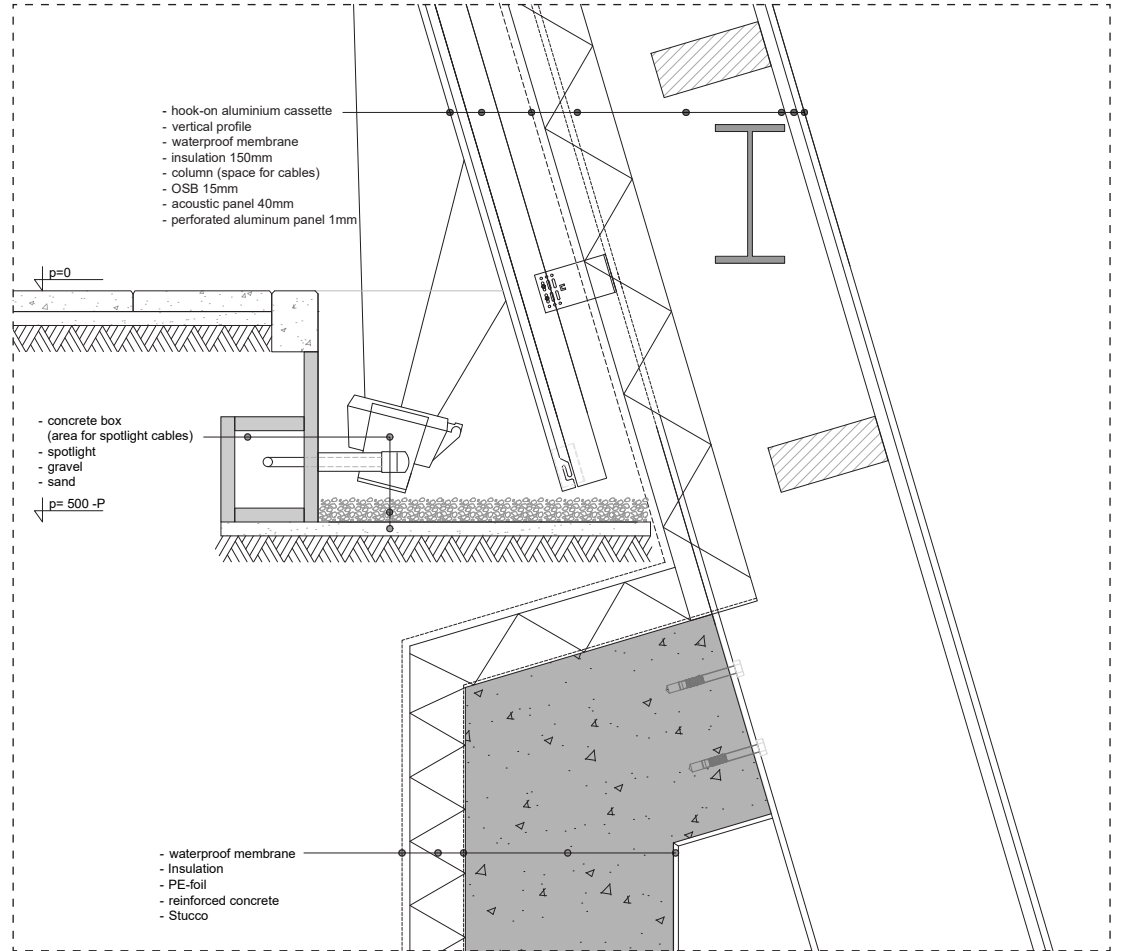


INTERGENERATIONAL GAMING CENTER
DETAIL LEVEL 1:5

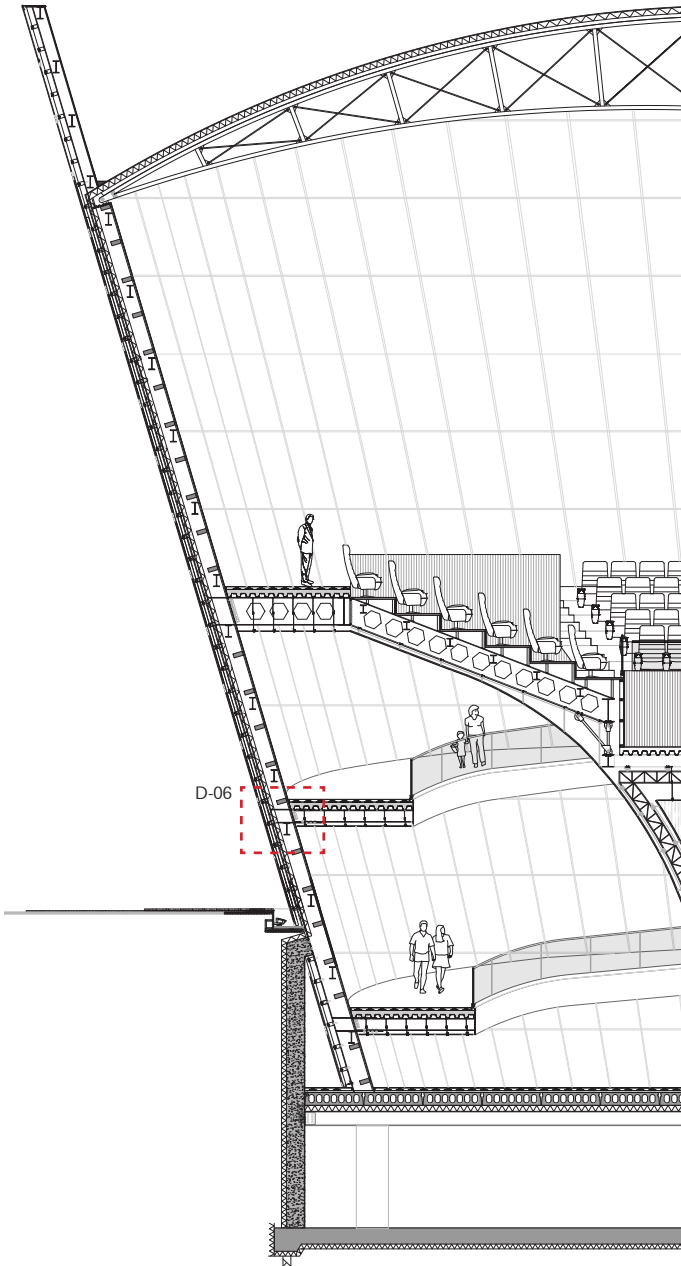
D-05



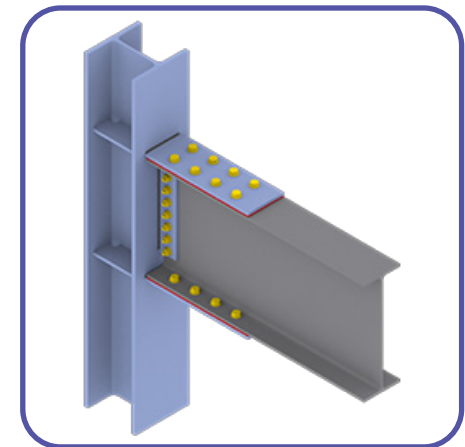
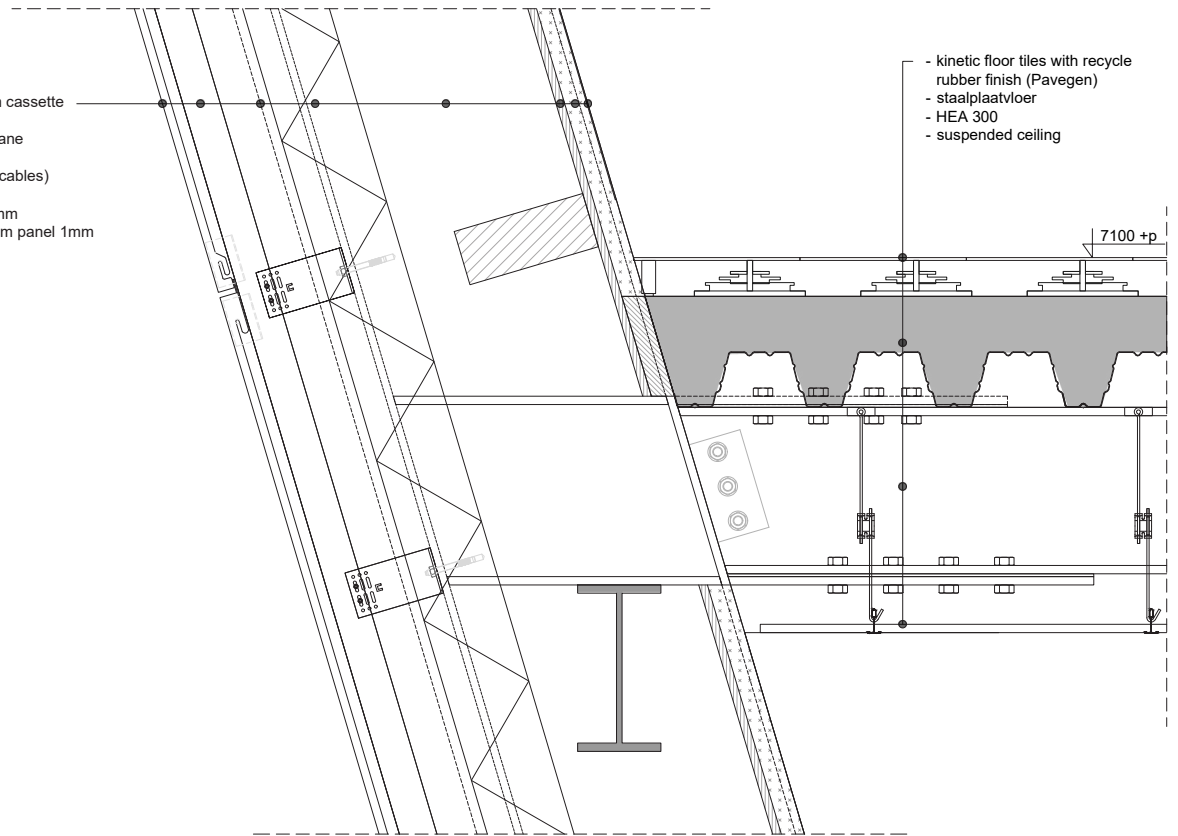
INTERGENERATIONAL GAMING CENTER
DETAIL LEVEL 1:5



D-06

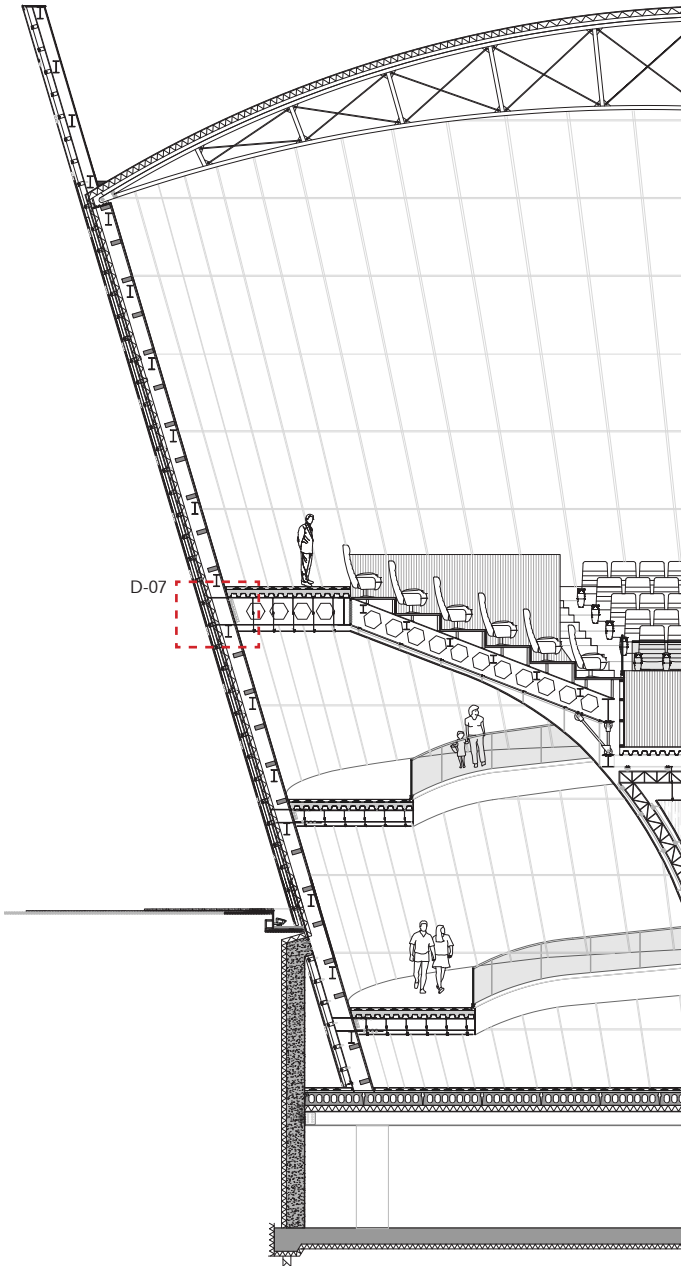


- hook-on aluminium cassette
- vertical profile
- waterproof membrane
- insulation 150mm
- column (space for cables)
- OSB 15mm
- acoustic panel 40mm
- perforated aluminum panel 1mm



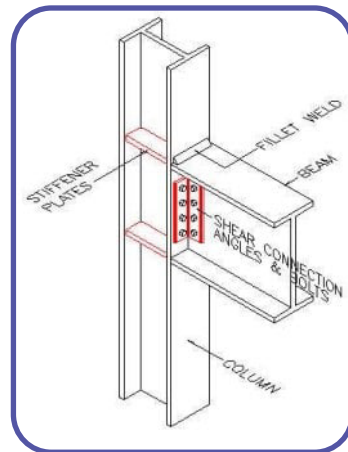
INTERGENERATIONAL GAMING CENTER
DETAIL LEVEL 1:5

D-07

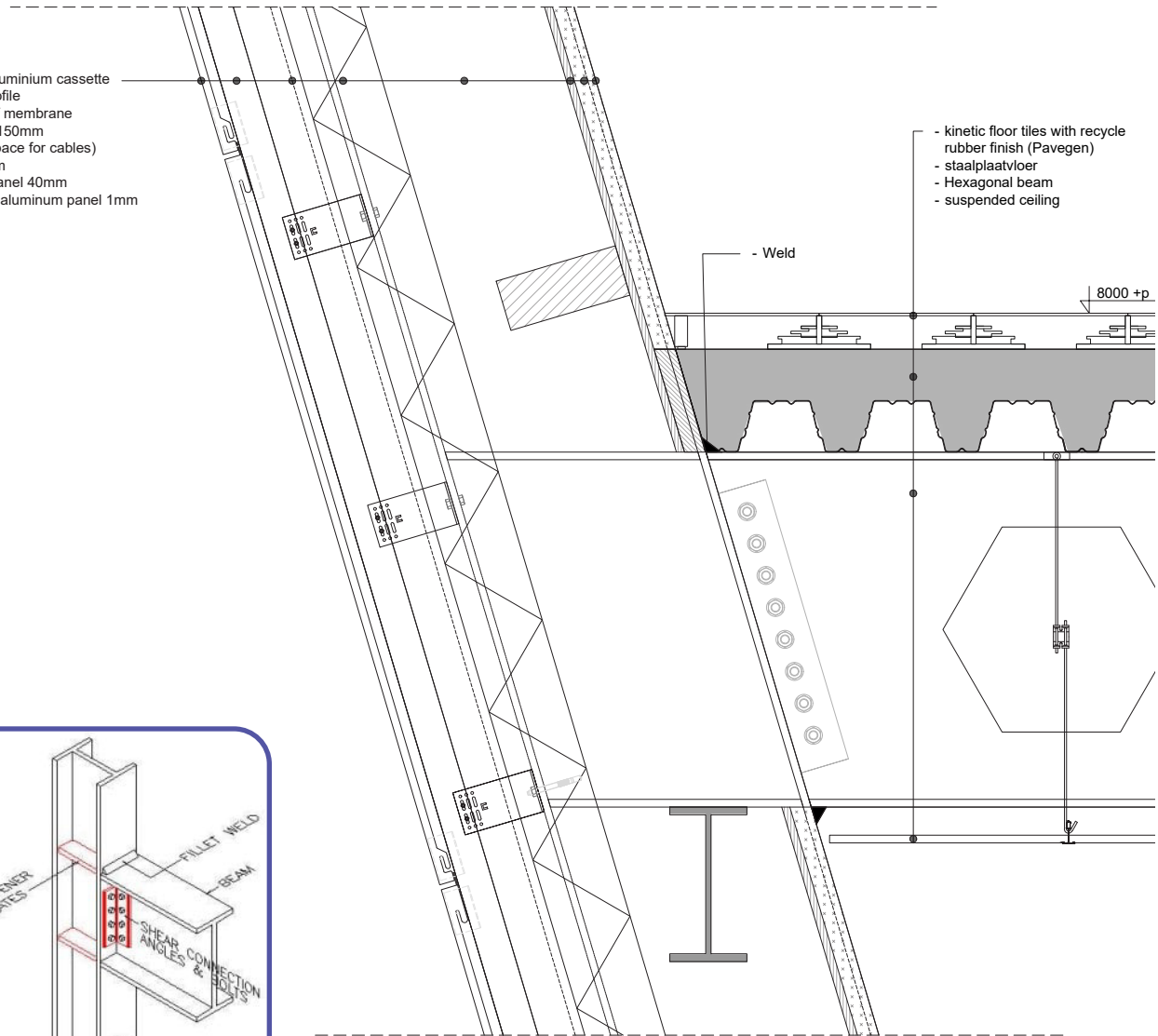


D-07

- hook-on aluminium cassette
- vertical profile
- waterproof membrane
- insulation 150mm
- column (space for cables)
- OSB 15mm
- acoustic panel 40mm
- perforated aluminum panel 1mm



STIFFENER PLATES
 FILLET WELD
 BEAM
 SHEAR CONNECTION BOLTS
 COLUMN



- kinetic floor tiles with recycle rubber finish (Pavegen)
- staalplaatvloer
- Hexagonal beam
- suspended ceiling

- Weld

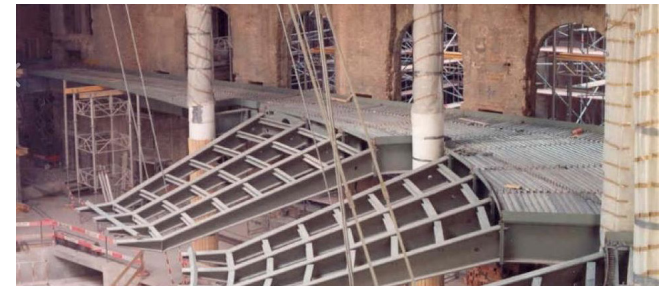
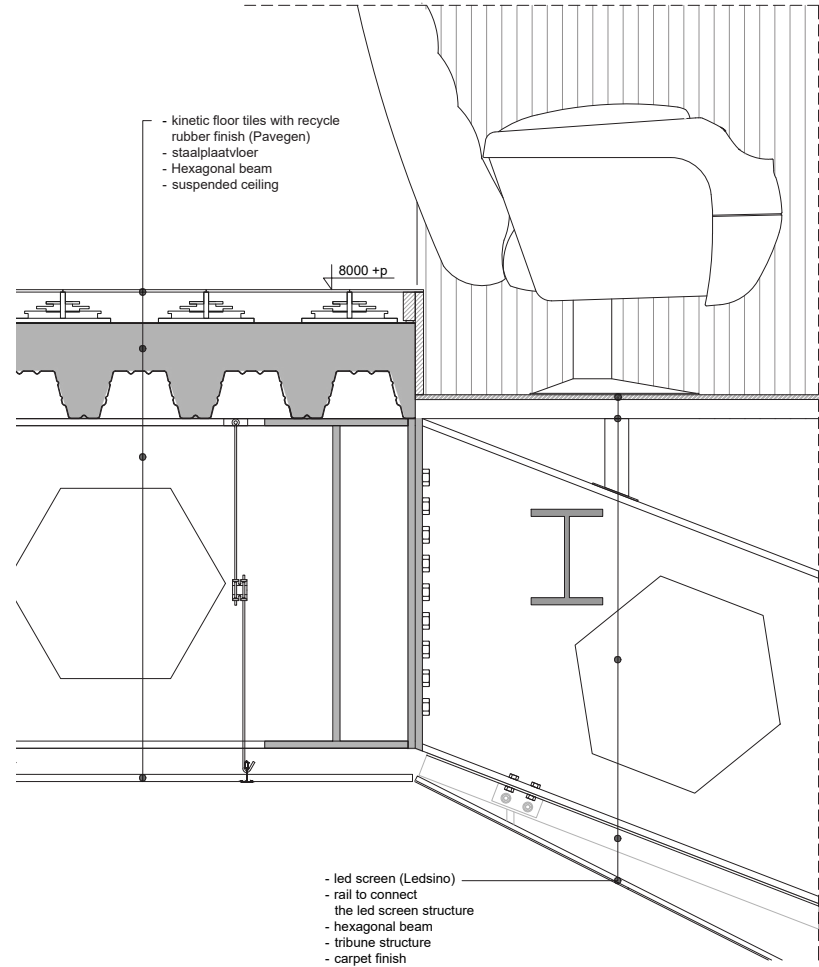
8000 +p



D-08



INTERGENERATIONAL GAMING CENTER
DETAIL LEVEL 1:5



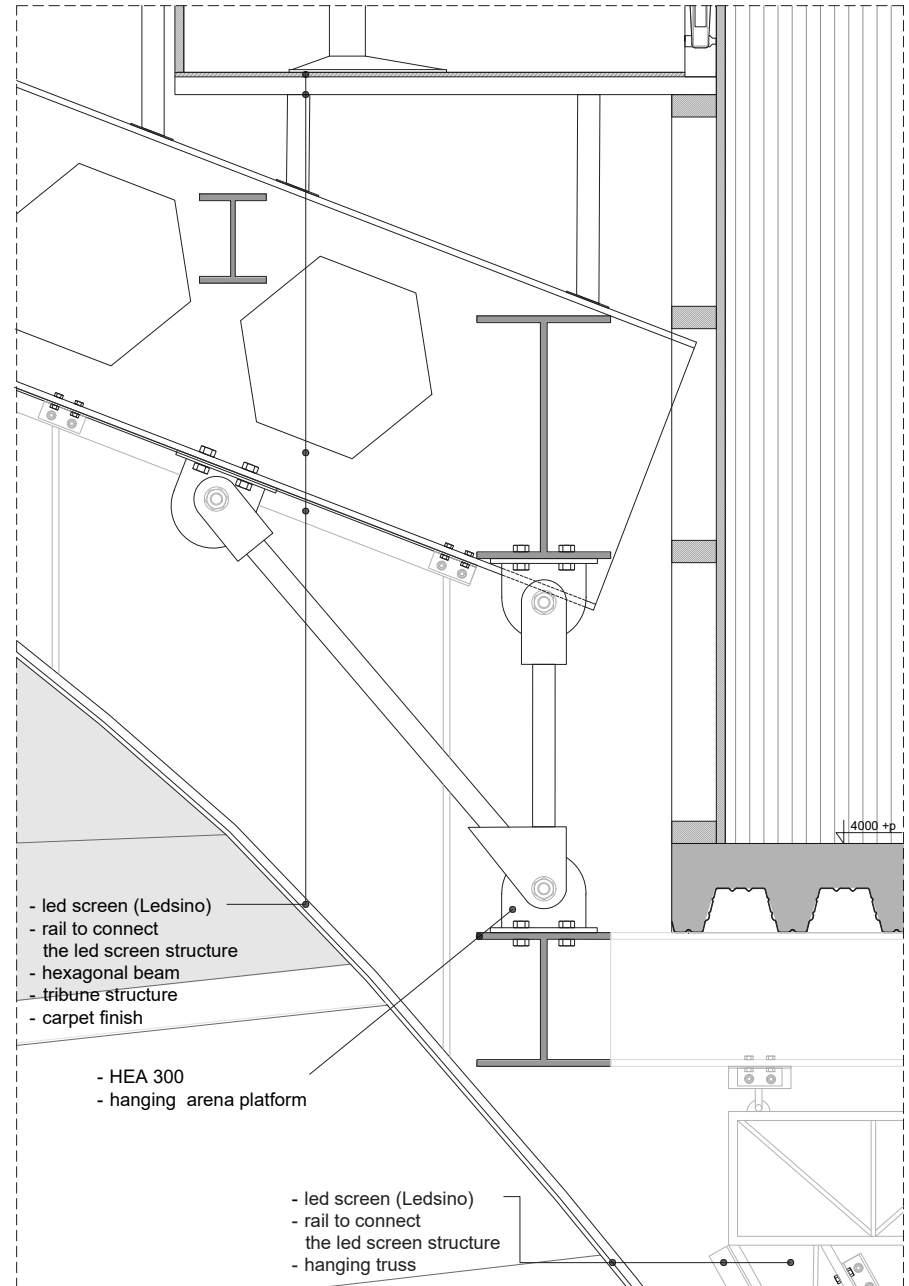
Reference project for arena seat
Reichstag Building | Berlin 1894 | Norman Foster



D-09



INTERGENERATIONAL GAMING CENTER
DETAIL LEVEL 1:5

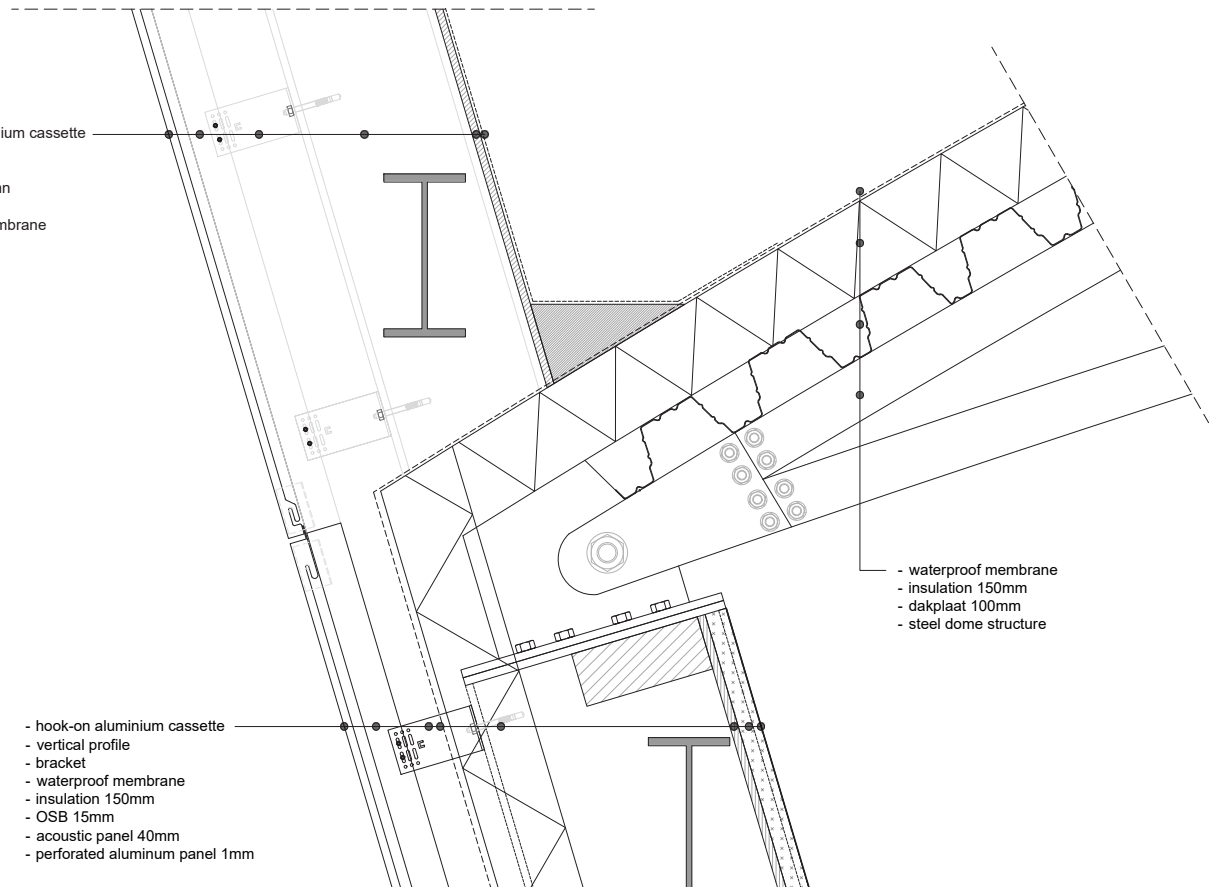


Drawing set

D-10



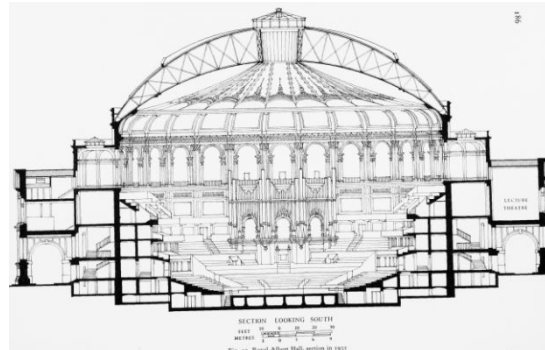
- hook-on aluminium cassette
- vertical profile
- bracket
- HEA 300 column
- OSB 15mm
- waterproof membrane



- hook-on aluminium cassette
- vertical profile
- bracket
- waterproof membrane
- insulation 150mm
- OSB 15mm
- acoustic panel 40mm
- perforated aluminium panel 1mm

- waterproof membrane
- insulation 150mm
- dakplaat 100mm
- steel dome structure

INTERGENERATIONAL GAMING CENTER
DETAIL LEVEL 1:5



Reference project for dome structure
Royal Albert Hall | London 1871 | Francis Fowke | span 55m

