



NORTH ENTRANCE

Estuary

-

view on Stoa,
Salon, Round About



SOUTH ENTRANCE

Play Garden

view on Cizsa Domain,
Protest Domain



STREET

Bar Mleczny, Stair Wall

view on Stoa, Salon,
Round About



SALON

Town Living room / Stoa

view on Protest Domain



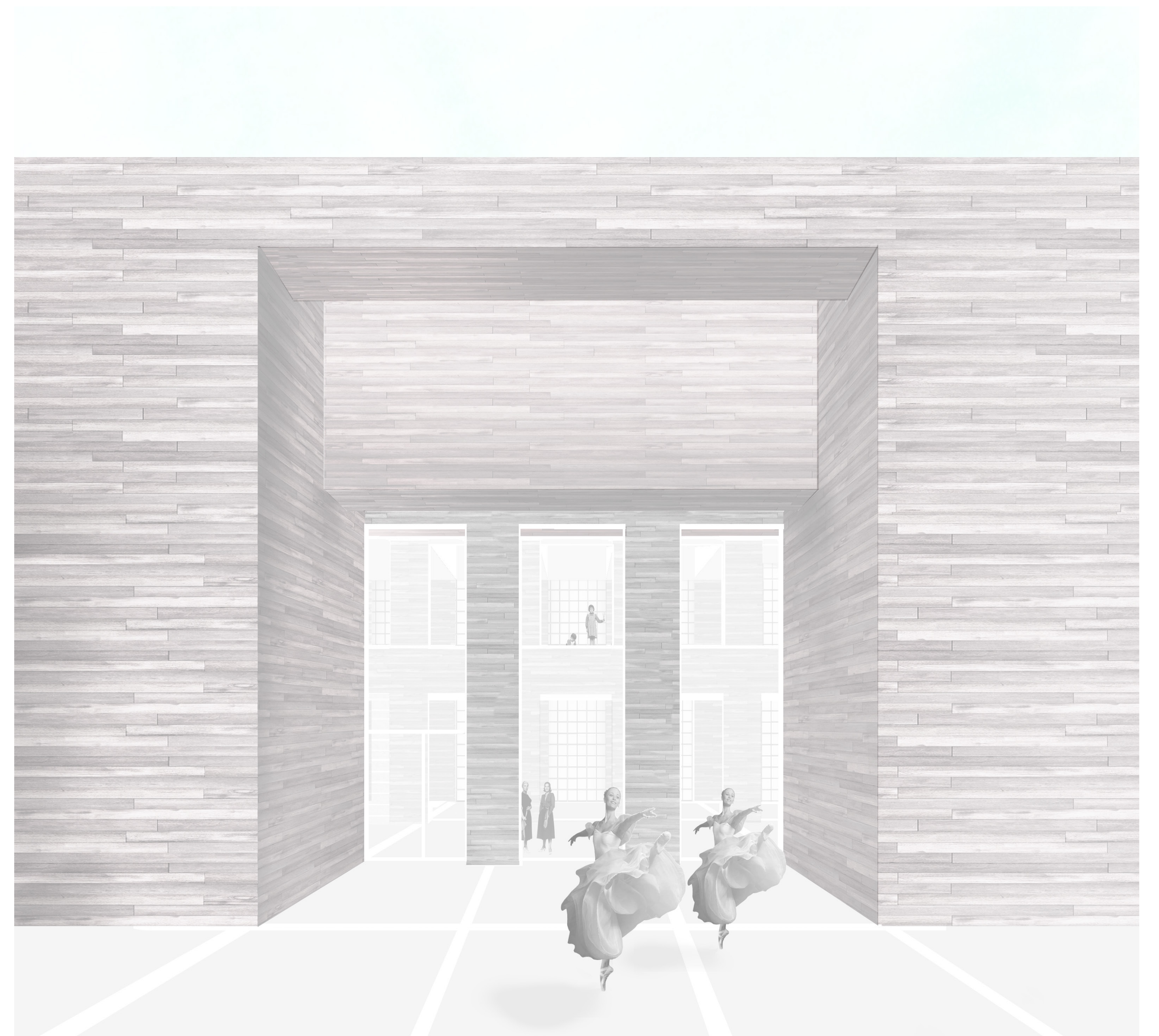
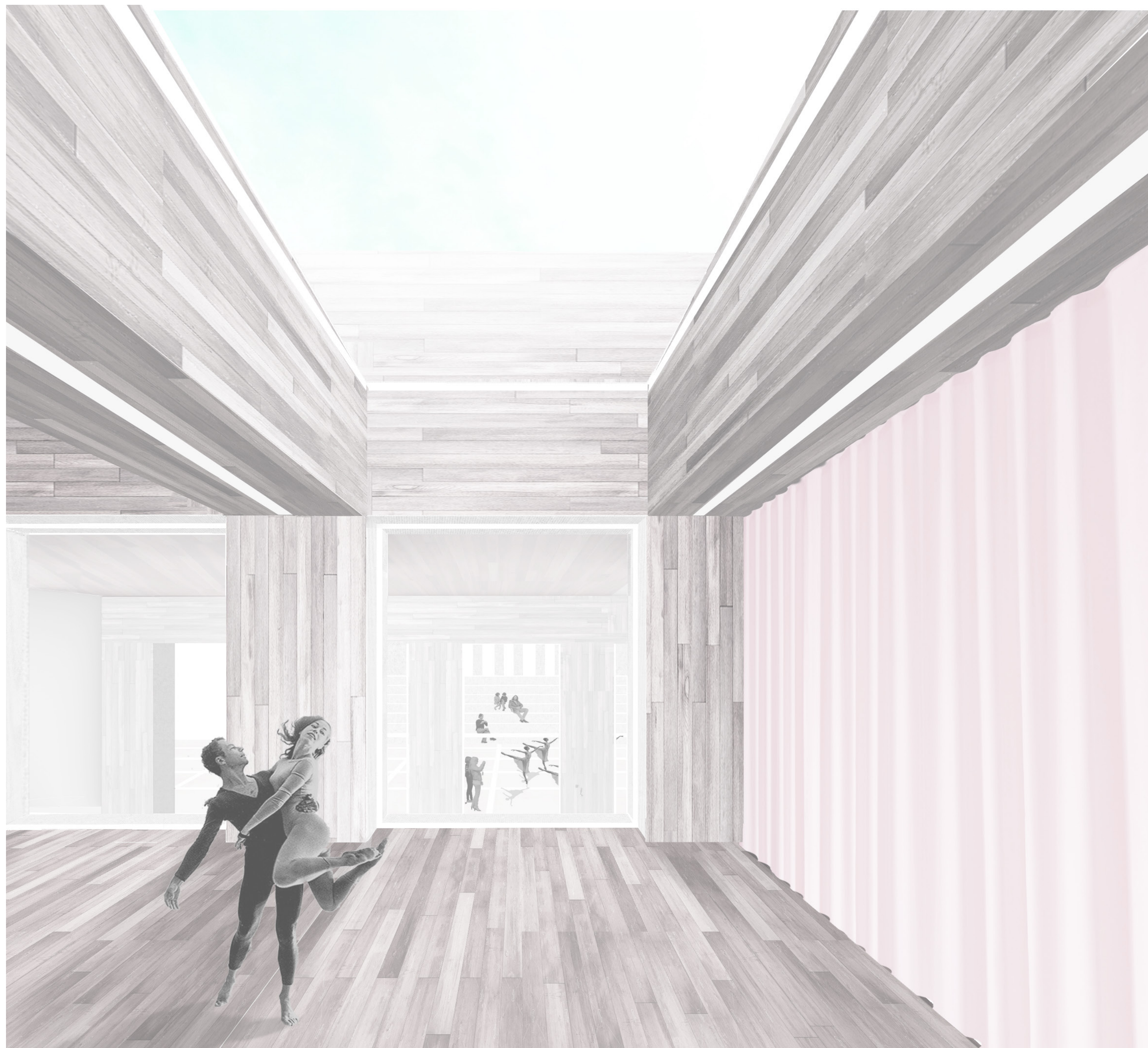
WUNDERKAMMER

Entrance to Auditorium /
Street to Elevator Core



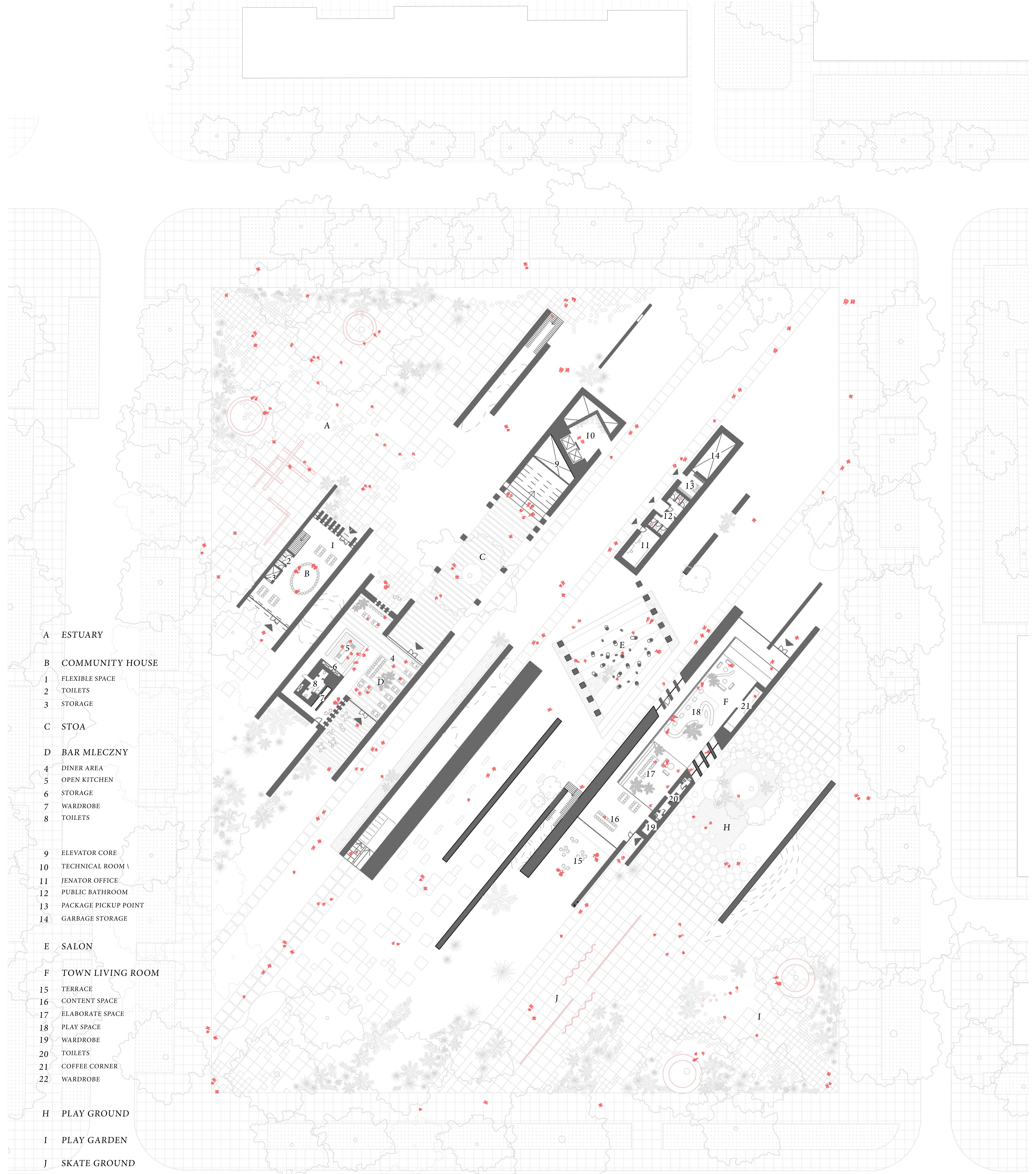
BAR MLECZNY / STOA

< Bar to Stoa
> Stoa to Bar



AUDITORIUM / HOUSE OF SAMOROZWOJ

< Dance Studio Space to Auditorium Domain
> Auditorium to House of Samorozwoj



A ESTUARY

B COMMUNITY HOUSE

1 FLEXIBLE SPACE
2 TOILETS
3 STORAGE

C STOA

D BAR MLECZNY

4 DINER AREA
5 OPEN KITCHEN
6 STORAGE
7 WARDROBE
8 TOILETS

9 ELEVATOR CORE

10 TECHNICAL ROOM

11 JENATOR OFFICE

12 PUBLIC BATHROOM

13 PACKAGE PICKUP POINT

14 GARBAGE STORAGE

E SALON

F TOWN LIVING ROOM

15 TERRACE
16 CONTENT SPACE
17 ELABORATE SPACE
18 PLAY SPACE
19 WARDROBE
20 TOILETS
21 COFFEE CORNER
22 WARDROBE

H PLAY GROUND

I PLAY GARDEN

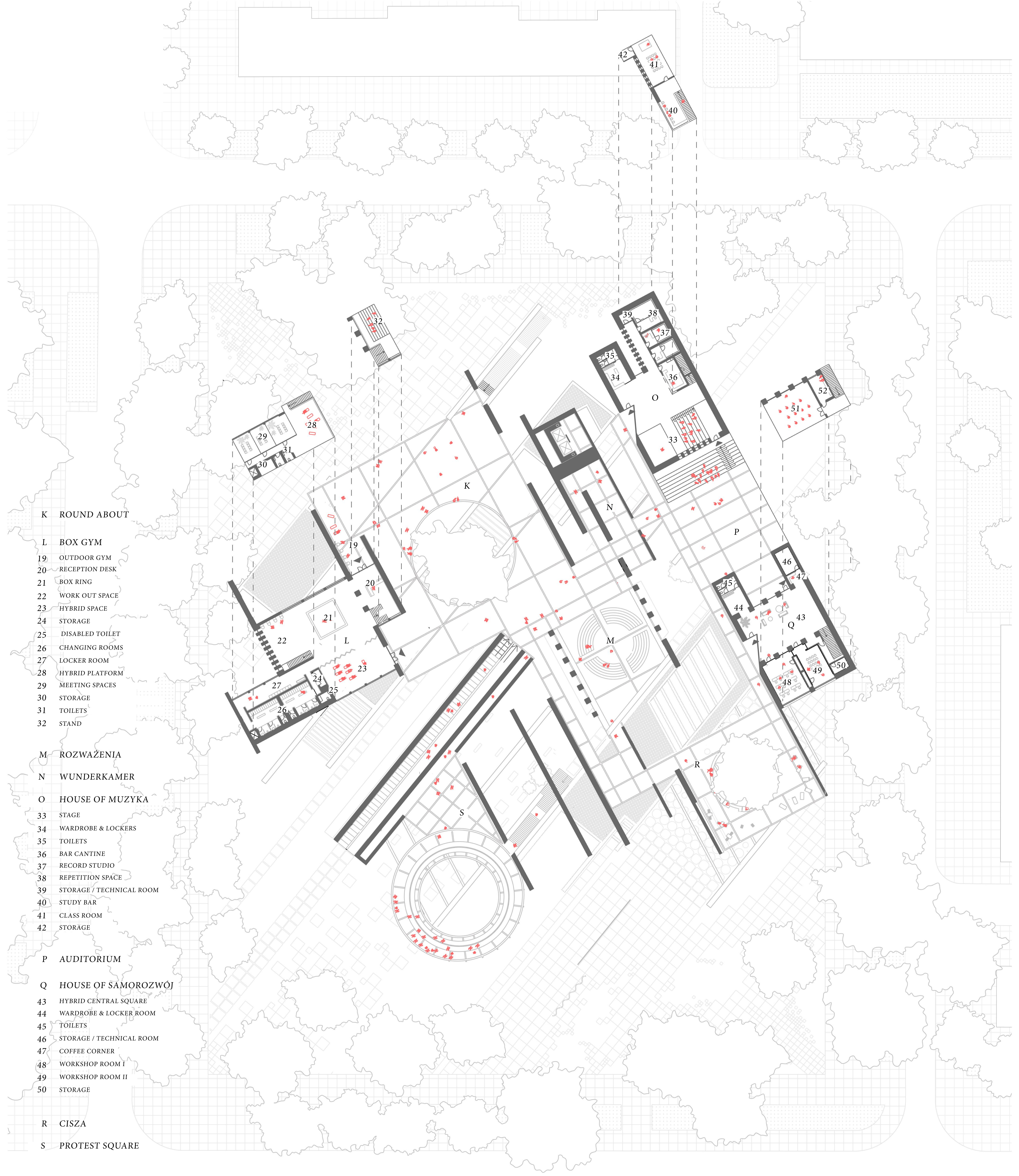
J SKATE GROUND

GROUND FLOOR

Demo Domain of Park Ratuszowy w Krakowie,
Kraków, Nowa Huta. Poland.

50°04'32.9"N 20°02'20.4"E



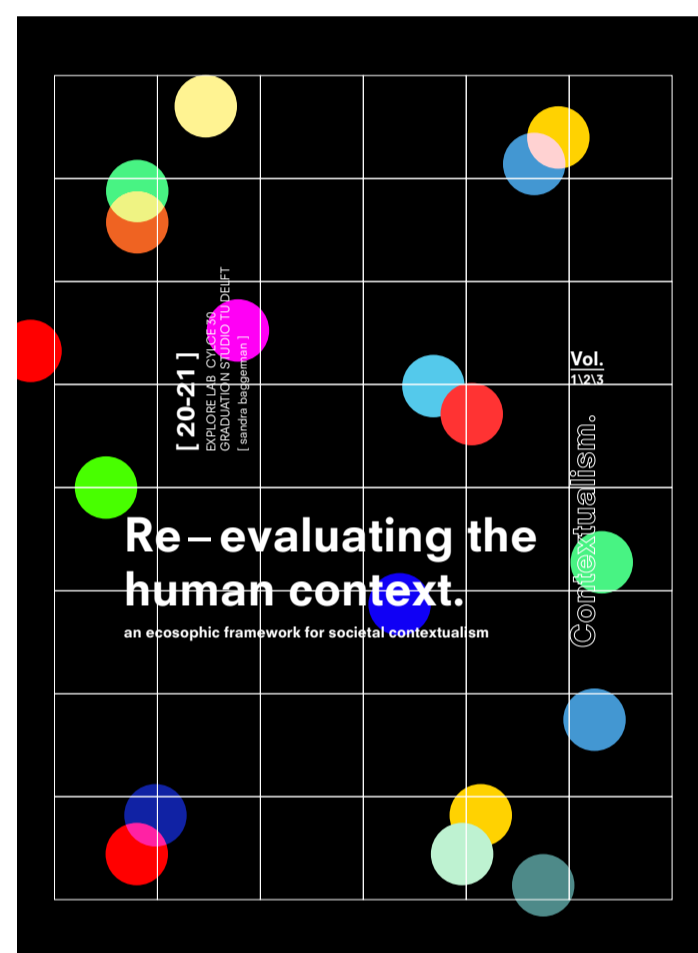


+1

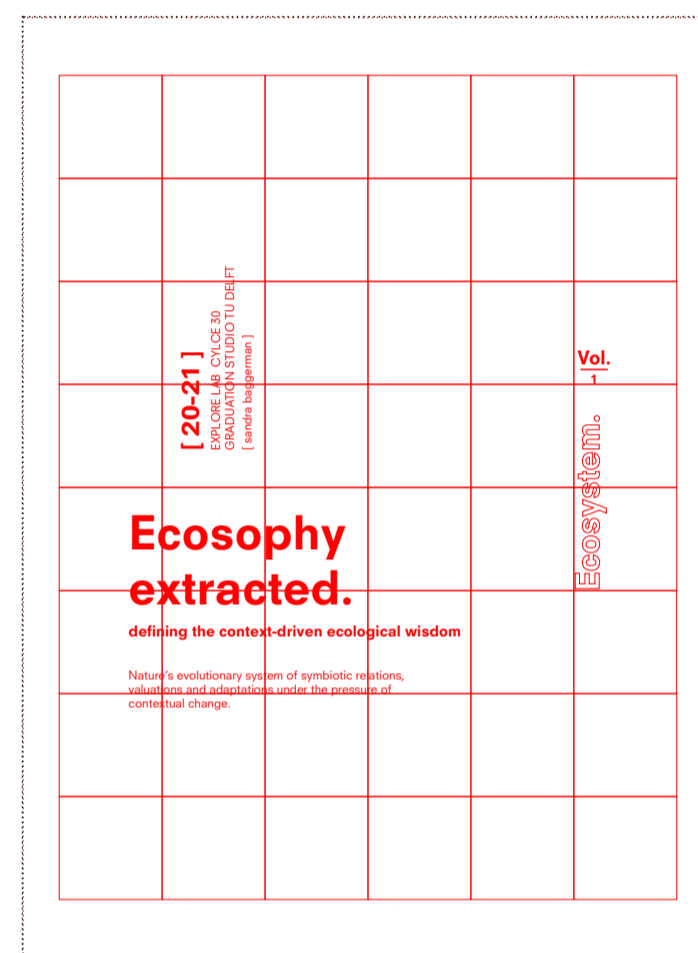
Demo Domain of Park Ratuszowy w Krakowie,
 Kraków, Nowa Huta. Poland.

50°04'32.9"N 20°02'20.4"E

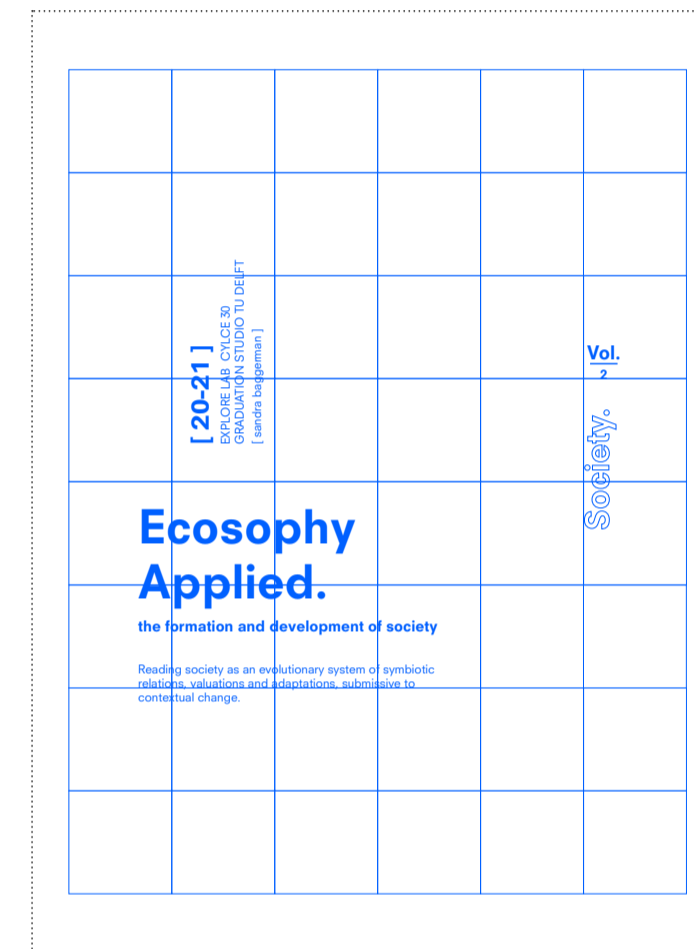




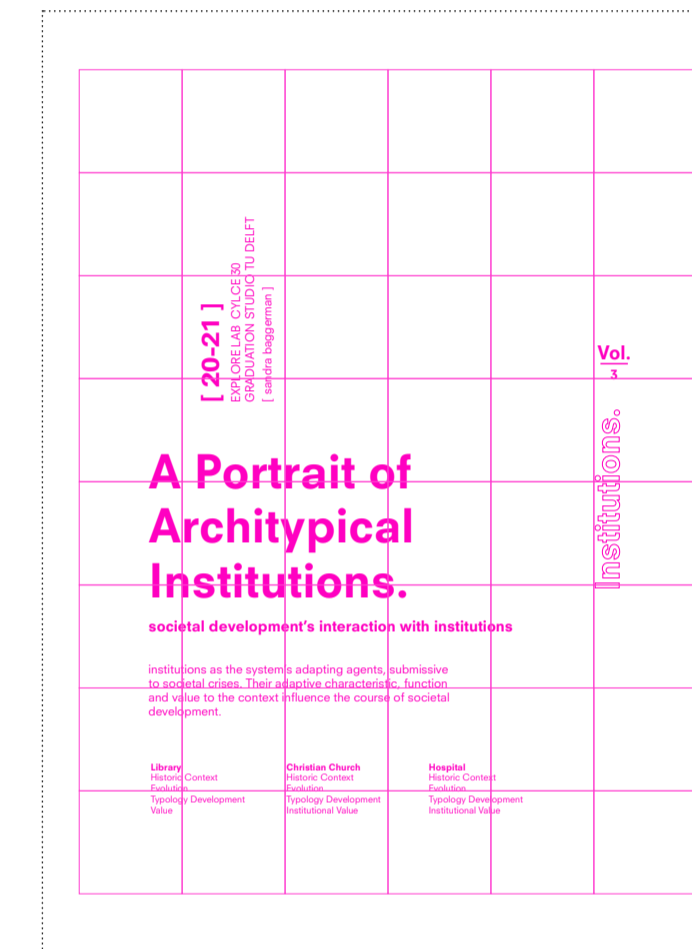
https://issuu.com/sandrabaggerman/docs/black_book



https://issuu.com/sandrabaggerman/docs/vol_1



https://issuu.com/sandrabaggerman/docs/vol_2



https://issuu.com/sandrabaggerman/docs/vol_3



<https://issuu.com/sandrabaggerman/docs/online2>

BOOKLETS

> TO READ (CLICK BOOK OR LINK)

A series of 5 book, 4 on the research of Ecosophy; extracted, applied, institutional analyse and a conclusive description of the framework.

And 1 book on the usage of Framework to approach the societal crisis of the weakening of the EU.

1 BRICK WALL I

THE FACADE FACING THE ENTRANCE SQUARE IS OF COLOURFUL, RECLAIMED RED BRICKS. A PATTERN OF STAGGERED BRICKS WITH OPENINGS IN THE VERTICAL DIRECTION ALLOW FOR A TRANSLUCENT APPEARANCE. PEOPLE GET A HIND OF WHAT IS BEHIND; THE PEOPLE, THE OTHER FACADE, THE GREEN OR THE ACTIVITIES.

2 CASTLE FACADE

A STAGGERED FACADE OF DIFFERENT SIZED STONE BLOCKS, BRICKS AND CONCRETE BLOCKS FUNCTIONS AS A PORTAL INTO THE COMPLEX. PREFABRICATED PANELS OF STONES ARE ATTACHED TO THE WOODEN STRUCTURE BEHIND. THE LARGER SIZE OF USED MATERIALS AND THE MORE ROUGH APPLICATION SHOWS THE CONTRAST BETWEEN THE BRICK WALL FOR EXAMPLE. IF ALLOWS FOR A FIELD OF DEPTH THE APPEAR WHEN MOVING IN BETWEEN THE FACADES.

3 BRICK GABION

THIS FACADE IS, AGAIN, HAS DIFFERENT APPLICATION OF BRICKS. THIS FACADE IS COMPOSED OF GABIONS THAT ARE FULLY FILLED WITH CRUSHED BRICK GRAVEL. A DENSE, FINE AND MASSIVE LOOK OF THE FACADE AGAIN SHOWS CONTRASTING SPHERES WITH THE OTHER FACADES.

4 STAGGERED MOSAIC

THIS FACADE IS DEFINED BY A STAGGERED PATTERN OF GREY BRICKS, ROOF TILES AND CONCRETE TILES OF THE OUTDOORS. A COMPOSITION OF SHADES OF LIGHT AND DARK WITH A POP OF COLOUR HERE AND THERE BREAKS UP THE VISUAL SOLIDITY.

5 MOSAIC

THE INNER AND OUTER FACADE OF THE MILKBAR AND THE COLONNADE OF THE STOA SHOWS A FINE AND EMOTIONALLY RELATABLE APPLICATION MATERIAL. A MOSAIC OF BATHROOM TILES, KITCHEN TILES, OUTDOOR CONCRETE TILES AND FLAGSTONES. THE VARIETY IN GLOSSINESS OF THE MATERIALS, THE AMOUNT OF WEATHERING AND THE COLOUR MAKES FOR A PLAYFUL AND ENGAGING COMPOSITION. IT CONNECT ON THE PERSONAL AND INTIMATE LEVEL AS PEOPLE RECOGNIZE THE TILES THEY HAVE IN THERE OWN HOUSE.

6 STAIRWALL

THE MAIN STAIR IS INSIDE THE MESH WALL, LIFTING THE PEOPLE UP AS IF THEY RISE INSIDE THE COMPLEX. THESE WALLS AND THEIR FACADES CONSIST OF DIFFERENT SIZED GABIONS, FILLED UP WITH DIFFERENT SIZES OF BRICK GRAVEL. A COMPOSITION OF OPEN AND FILLED UP GABIONS SHOWS A TRANSPARENT LOOK AND FEEL IN CONTRAST WITH THE "MASSIVENESS" OF THE STAIRWALL. UP THE WALL THE FACADE BECOMES MORE TRANSLUCENT, LETTING THROUGH LIGHT AND VAGUE SIGHT. STRUCTURE IS HIDDEN BEHIND

7 RUIN MIKADO

LARGE PIECES OF RECLAIMED CONCRETE OF WALLS AND FLOORS FORM A COMPOSITION OF A MASSIVE YET FORDABLE WALL. THE PIECES ARE HELD TOGETHER BY STEEL ROTS AND CABLES AND MOUNTED TOGETHER BY ANCHORS. THE STRUCTURE IS HIDDEN BEHIND THE FACADE MAKING THE WALL APPEAR AS A STRONG, HEAVY LIFTING COMPOSITION OF MIKADO.

8 HEAVY LIFTING

THE DOMAIN OF CONSIDERATION, THE "ROZWAZENIA" IS CARRIED BY 12 COLUMNS THAT RUN FROM GROUND FLOOR TO 10 METER ABOVE THE DECK. THEY SHOW A STACKING OF DIFFERENT HARD MATERIALS LIKE CONCRETE, BRICKS, STONES, ROOF TILES, PIECES OF STEEL ENFORCED CONCRETE. PREFABRICATED PANELS ARE ATTACHED TO THE MAIN STRUCTURE SO THAT THE MATERIAL DO NOT HAVE TO CARRY THEIR LOAD ON TOP OF EACH OTHER. THIS STACKING OF STONES OF DIFFERENT TYPES, SIZES AND LOOKS SHOWS A STURDY, YET FRAGILE LOOK

9 MESH

THE MESH FACADE THAT ACCOMPANIES PEOPLE INTO THE SALON DOMAIN IS MADE OF TRANSPARENT APPLICATION OF GABIONS. LIKE THE OTHER GABIONS, THIS WALL IS NOT FULLY FILLED UP, ALLOWING LIGHT AND SIGHT TO GET THROUGH SOME FILLING IS PLACED BEHIND EACH OTHER, SOMETIMES LEAVING THE FRONT GABION EMPTY. THIS WAY A FIELD OF DEPTH IS CREATED INSIDE THE WALL. IT BREAKS UP THE VISUAL CONTINUATION OF THE FLAT WALL.

10 WAVING CORRUGATED IRON

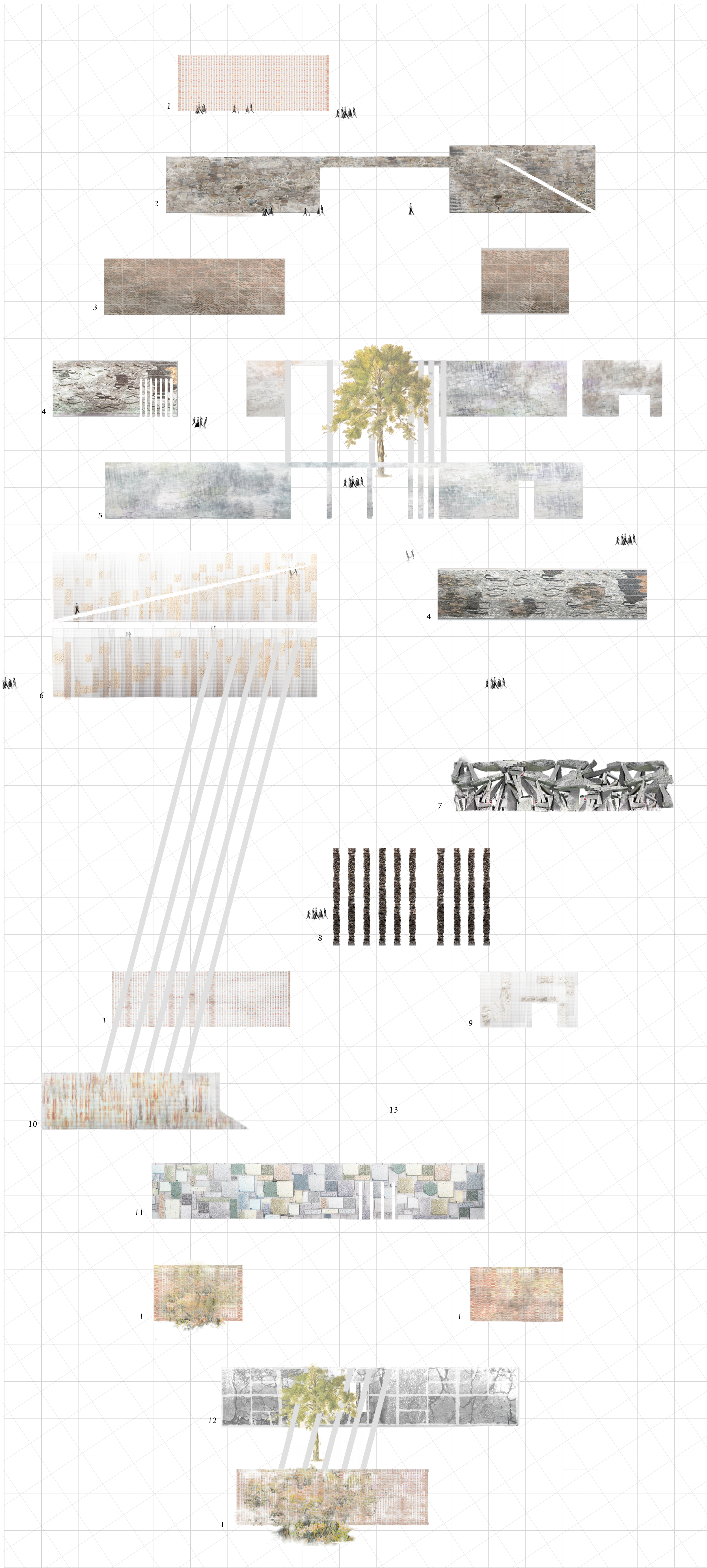
THE FACADE THAT LEADS INTO THE HEART OF THE SALON CARRIES THE WEIGHT OF THE PROTEST SQUARE ABOVE. IT CONTAINS A STAIR THAT OPENS UP THE WALL. THIS FACADE CONSISTS OF LARGE SCALE GABIONS FILLED WITH WEATHERED RECLAIMED CORRUGATED IRON. THE MATERIAL IS GIVEN LIFE FROM ROOFING OF SHEDS TO COLOURFUL AND ENGAGED FACADES. LIKE THE OTHER GABIONS, A FIELD OF DEPTH IS CREATED THROUGH THE LAYERED FILLING OF THE GABIONS.

11 TERRAZZO TILES

THE COLOURFUL FACADE OF THE SALON AND LIVING ROOM IS COMPOSED OF TERRAZZO TILES MADE OF RECLAIMED SHREDS, SHREDS OF FABRICS, CARPETING, WOOD, WALLPAPER, TILES, IRON ALLOW FOR A COLOURFUL AND DYNAMIC CATALOGUE OF TILES. THE TILES ARE MADE OF EPOXY. PEOPLE OF NOWA HUTA ARE INVITED TO THE STUDIO TO MAKE THEIR OWN TILE. THIS WAY A DIRECT EMOTIONAL CONNECTION OF THE PEOPLE AND THE MATERIAL IS MADE.

11 TARMAC

NEXT TO BUILDING AND NATURE, TARMAC ROADS HAVE TO MAKE WAY FOR THE HIGH WAY. THE OUT SIDE FACADE OF THE PLAY DOMAIN AND INSIDE OF THE LIVING ROOM CONSIST OF LARGE PIECES OF BROKEN TARMAC HOLD TOGETHER IN A CORTEN STEEL FRAME. THEY ARE ATTACHED WITH RODS AND CABLES. THE ROUGH LOOK AND FINESSE OF THE CORTEN CREATE AND INTERESTING PLAY BETWEEN BOTH.



FACADES I

The facades on ground level lead the people of Nowa Huta into the complex. They make a personal, inviting, open, sometimes warm connection to them through their different looks and feels. The architecture of these facades is more sturdy and firm than that of the facades above. These facade show a masculinity of materials. This way, the architectural appearance, construction and interaction with the elements allow for the experience of different atmospheres.

1 STAGE FRAME I

THE FRAME THAT EMBRACES THE SELF-DEVELOPMENT PROGRAMMING. COMPOSED OF SCRAP WOOD PIECES "STICKED" INTO THE FACADE, THE PLANKS VARY IN SIZE AND DEPTH. SOME STICKS OUT FURTHER INTO THE SPACE, CREATING A 3D COMPOSITION LIKE A VERTICAL MOUNTAIN SCAPE. THIS WAY THE FACADES CREATE MORE INTIMATE PLACES WHEN MORE PUSHED IN.

2 STAGE FRAME II

THE SECOND FACADE THAT DEFINES THE STAGE SPACES. THE FACADE IS COMPOSED OF STACKED SECTIONS OF WOODEN FLOORS. THE RAW STRUCTURE OF PIECES OF HEAVY STEEL ENFORCED CONCRETE OR LIGHT WEIGHT WOOD STRUCTURE SHOW A CONTRASTING WHOLE. THE PIECES COME TOGETHER AS PREFABRICATED PANELS ON THE WOODEN MAIN STRUCTURE

3 MÉMOIRE TERRAZZO

THREE FACADES ARE DEVOTED TO THE MEMOIRS OF THE RECLAIMED MATTER SO THAT THE EVOLVED EMOTIONAL RELATION WITH THE MATTER WILL NOT BE FORGOTTEN. THE FIRST OF THE THREE IS AN ODE TO THE CONCEPT OF THE MATTER. IT APPEARS AS A LARGE CABINET. THE SQUARE SHELVES OF 30X30CM ARE SHUT WITH TERRAZZO EPOXY TILES OF SHREDS (FROM WOOD TO BRICK, TO BATHROOM TILES TO METAL) SOME TILES ARE TRANSLUCENT TO LET THROUGH THE LIGHT, OTHERS ARE COLOURED.

4 MÉMOIRE ELEMENTS

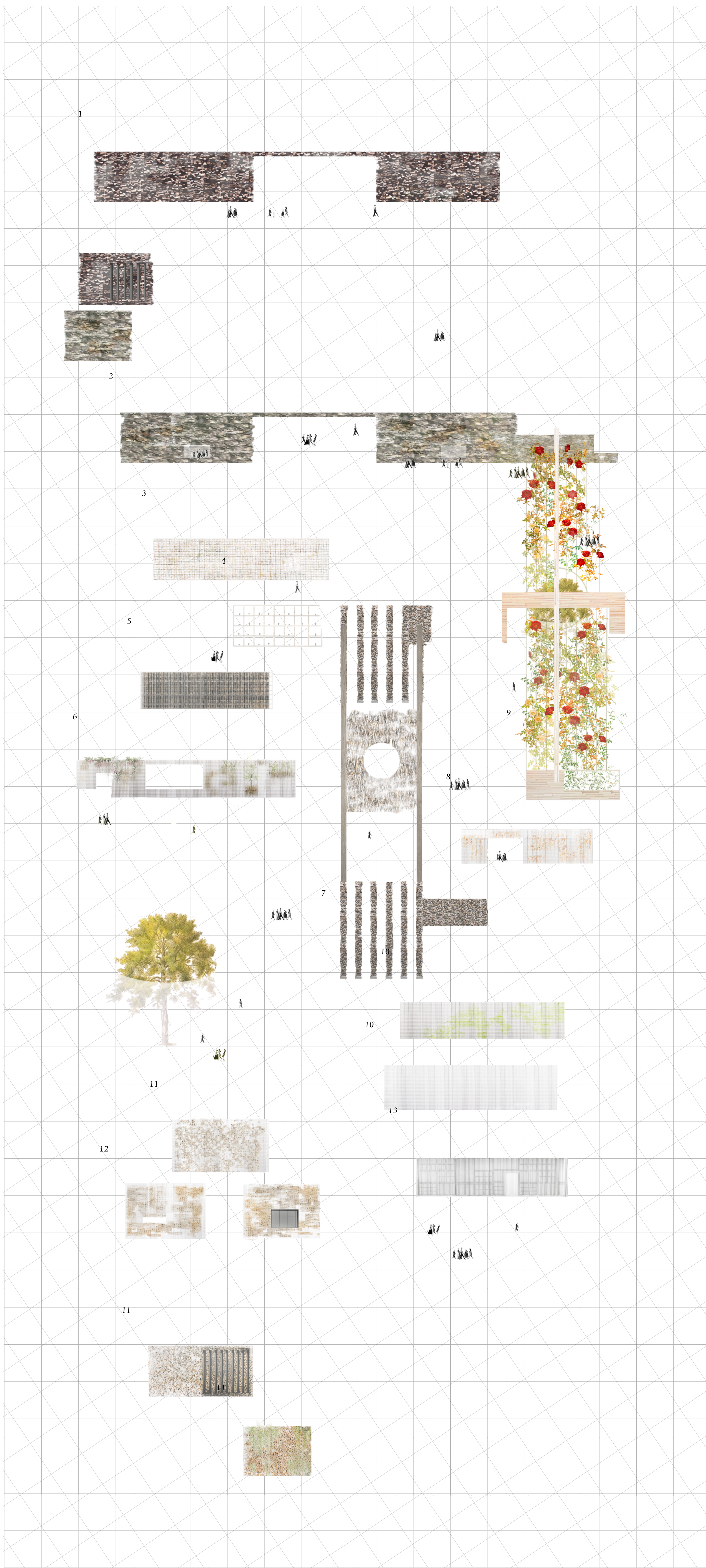
THE SECOND FACADE OF MÉMOIRE IS A CABINET OF DIFFERENT PROPORTION. EACH SHELVIE CUBE HAS A DIMENSION OF 1.2 X 1.2 METER. IT DISPLAYS THE DOORKNOBS OF THE HOUSES THAT ONCE WERE. WITH EACH DOORKNOB, AN DESCRIPTIVE SIGN DESCRIBES IT'S ORIGIN. WHAT WAS THE HOUSE LIKE, WHAT WAS IT'S ADDRESS, WHAT ROOM DID THIS KNOB LEAD TO? THIS FACADE MAKES SURE THAT EVEN TOUGH THE ADDRESS AND STREET ARE WIPED OFF THE MAP, THEY WILL NOT BE FORGOTTEN.

5 MÉMOIRE FRAMES

THE THIRD FACADE REFERS TO A DIFFERENT LAYER OF EMOTION ASSOCIATION WITH THE MATTER. IT FORCES THE MATERIAL IN A NEW ROLE, DISCONNECTING THE PEOPLES INITIAL RELATION TO THE MATERIAL THIS FACADE IS COMPOSED OF WINDOW FRAMES MADE OF STAIR STEPS AND RAILINGS. THE FRAMES ARE PLACED ON A DIAGONAL TO DIRECT THEIR VIEW TOWARDS THE DEBATE SPACE.

6 WEIGHTLESS GREEN

THE SEEMINGLY WEIGHTLESS MESH STRUCTURE OF GABIONS IS CAN BE FOUND IN MANY DIFFERENT OUTINGS ON THIS LEVEL THIS PARTICULAR FACADE IS DEFINED BY THE GROWTH OF GREEN INSIDE THE GABION STRUCTURE. THE PLANT POTS ARE CONNECTED TO A WATER SYSTEM, ASSURING THEIR HEALTH TO STAY GREEN THROUGHOUT THE YEAR. THE SOIL AND THE GREEN PARTLY FILL UP THE GABIONS TO DEFINE THE SPACE AROUND AND TO HIDE THE WOODEN STRUCTURE. THE GREEN OFFERS NESTING SPACES AND NUTRITION FOR ANIMALS AN INSECTS



7 HEAVY LIFTING

THE DOMAIN OF CONSIDERATION, THE "ROZWAZENIA" IS CARRIED BY 12 COLUMNS THAT RUN FROM GROUND FLOOR TO 10 METER ABOVE THE DECK. THEY SHOW A STACKING OF DIFFERENT HARD MATERIALS LIKE CONCRETE, BRICKS, STONES, ROOF TILES, PIECES OF STEEL ENFORCED CONCRETE. PREFABRICATED PANELS ARE ATTACHED TO THE MAIN STRUCTURE SO THAT THE MATERIAL DO NOT HAVE TO CARRY THEIR LOAD ON TOP OF EACH OTHER. THIS STACKING OF STONES OF DIFFERENT TYPES, SIZES AND LOOKS SHOWS A STURDY, YET FRAGILE LOOK

9 LAYERS OF CISZA

THE ATMOSPHERE OF THE DOMAIN OF PEACE AND SILENCE IS MAINLY COLOURED BY THE STRONG PRESENCE OF GREEN AND WATER. THE STRUCTURE THEREFORE TONES DOWN. THEY ARE COMPOSED OF LAYERS OF DEMOUNTED WOODEN WINDOW AND DOOR FRAMES. THE PREFABRICATED PANELS OF ALLOW FOR THE UPDATING WHEN THE DIFFERENT TYPES AND DIFFERENTLY TREATED WOOD DECAYS

10 WEIGHTLESS GREEN

JUST LIKE THE OTHER GREEN GABION FACADES, THIS FACADE APPEARS AS A WEIGHTLESS MESH STRUCTURE FILLED BY LUSH GREEN. THE LAYERING OF GABIONS CAUSES A FIELD OF DEPTH IN WHICH SOME PLANTS ARE LOCATED FURTHER INTO THE FACADE THAN OTHERS. THIS SHOWS A 3D COMPOSITION OF GREEN,

11 MAZE OF WOOD

THE BOX GYM AND SPORTS DOMAIN ARE SPATIALLY AND ATMOSPHERICALLY DEFINED BY THE MESH GABIONS FILLED WITH WOOD, GRAVEL AND BRICKS.. WOOD SCRAPS OF DIFFERENT SIZES FILL UP THE LAYERED VOIDS OF GABION. THESE GABION STRUCTURES HAVE SMALLER DIMENSIONS SO THE FILLING IS MORE FRAGMENTED AND PERMEABLE. THE SMALL VOIDS BETWEEN THE GABIONS ALLOW BIRDS, BATS AND INSECTS TO NEST. THEY CAN FIND SHELTER IN THE GABIONS, OR IN THE BIRDBOUSES THAT PLACED INSIDE.

12 BRICK STROKES

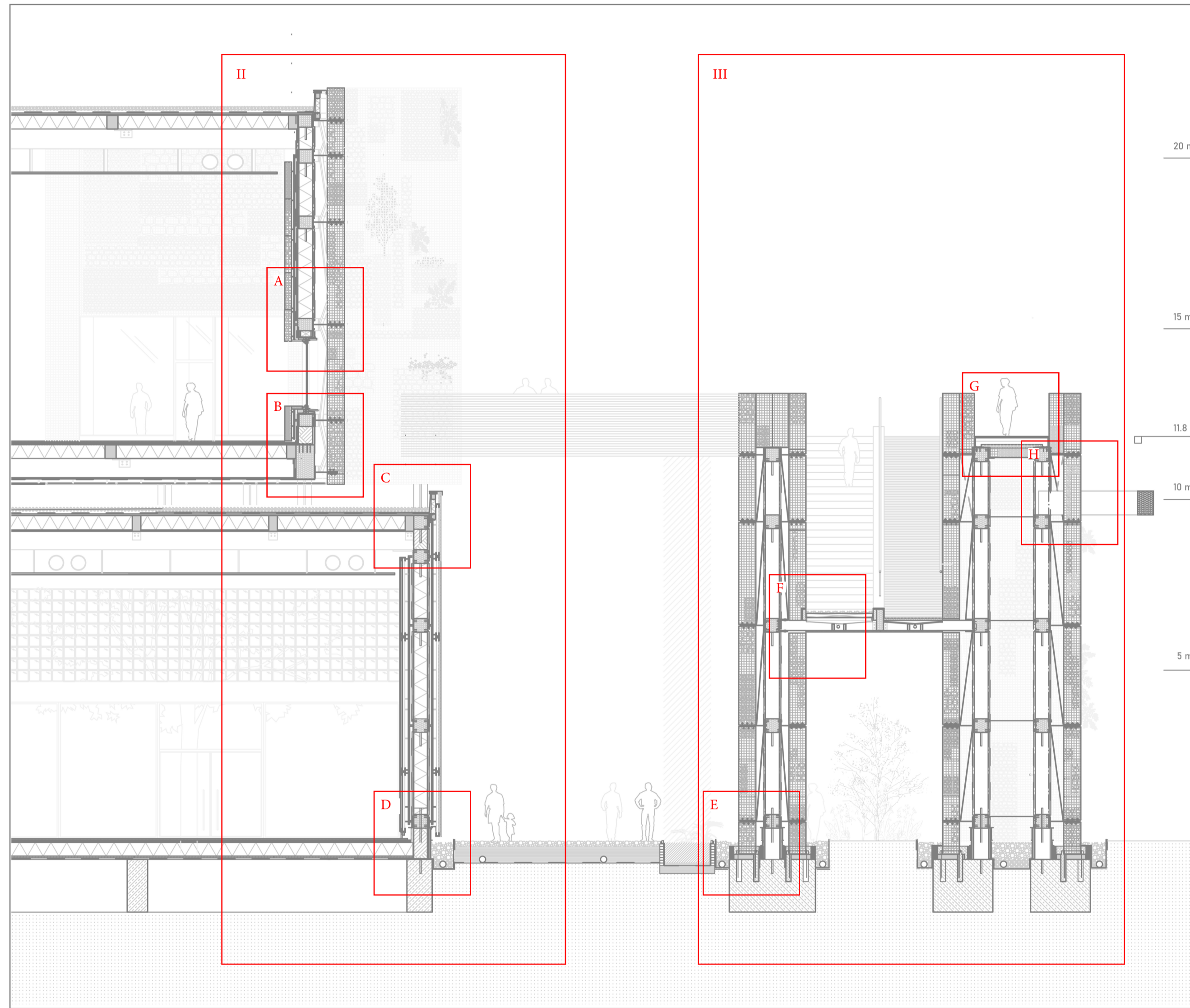
LIKE THE OTHER FACADE, THIS FACADE HAS A DIFFERENT PROPORTION OF GABIONS. THESE ARE ORIENTATED HORIZONTALLY MAKING THE FILLING APPEAR AS EARTH LAYERS. THE GABIONS ARE FILLED WITH WHOLE BRICKS THAT ARE LAYERED OUT NEXT TO EACH OTHER.

13 DECOR OF PROTEST

THIS FACADES HONOURS NOWA HUTA'S HISTORIC MANIFESTATION OF FACADES AS THE DECOR OF PROTEST. THIS FACADE FUNCTIONS AS BACKDROP OF THE PROTEST SQUARE. IT IS COMPOSED OF TWO LAYERS: A TRANSPARENT MESH CURTAIN AND BEHIND IT A STRUCTURE OF RECLAIMED WINDOW FRAMES. THE COMPOSITION OF BOTH ALLOWS THE PEOPLE TO PROTEST IN FRONT ON THEIR STAGE, WHILE BEING REMINDED OF THE HUMAN SCALE, HISTORY AND VALUES OF NOWA HUTAN PEOPLE. ONE HAS TO PASS THROUGH THE CURTAIN TO ENTER THE SQUARE. SO VERY CONSCIOUS MOVE ACTIVATES THE CONSCIOUS ENTERING OF THIS DOMAIN.

FACADES II

The facades of the first level appear transparent, translucent, solid green and with depth. They show different levels of intimacy, openness and interaction with ground and sky through the refinement of materials, scales and their relation towards the spectators. This way, the architectural appearance, construction and interaction with the elements allow for the experience of different atmospheres.

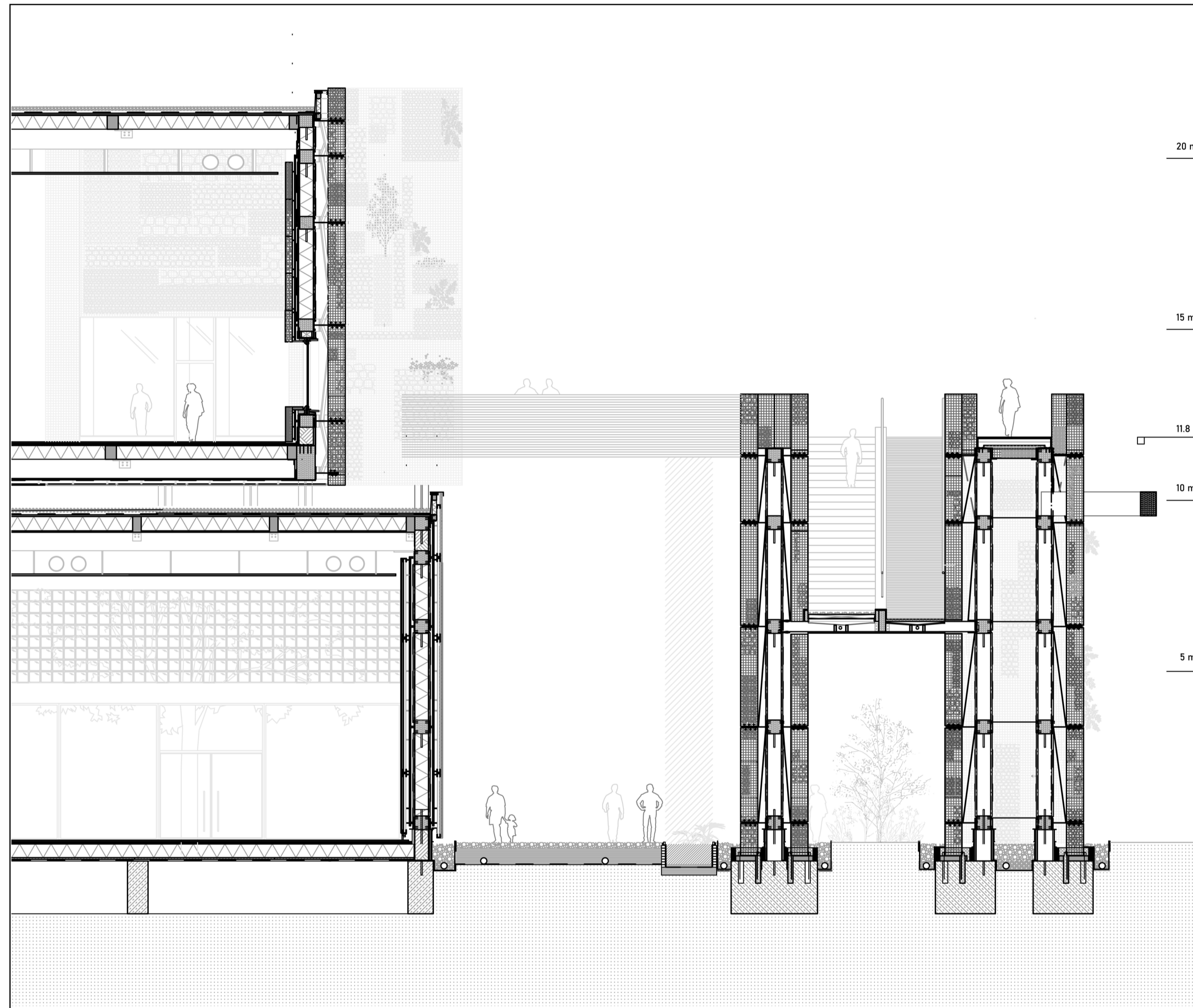


DETAILS

1x 1:200

2 x 1:20

8 x 1:5

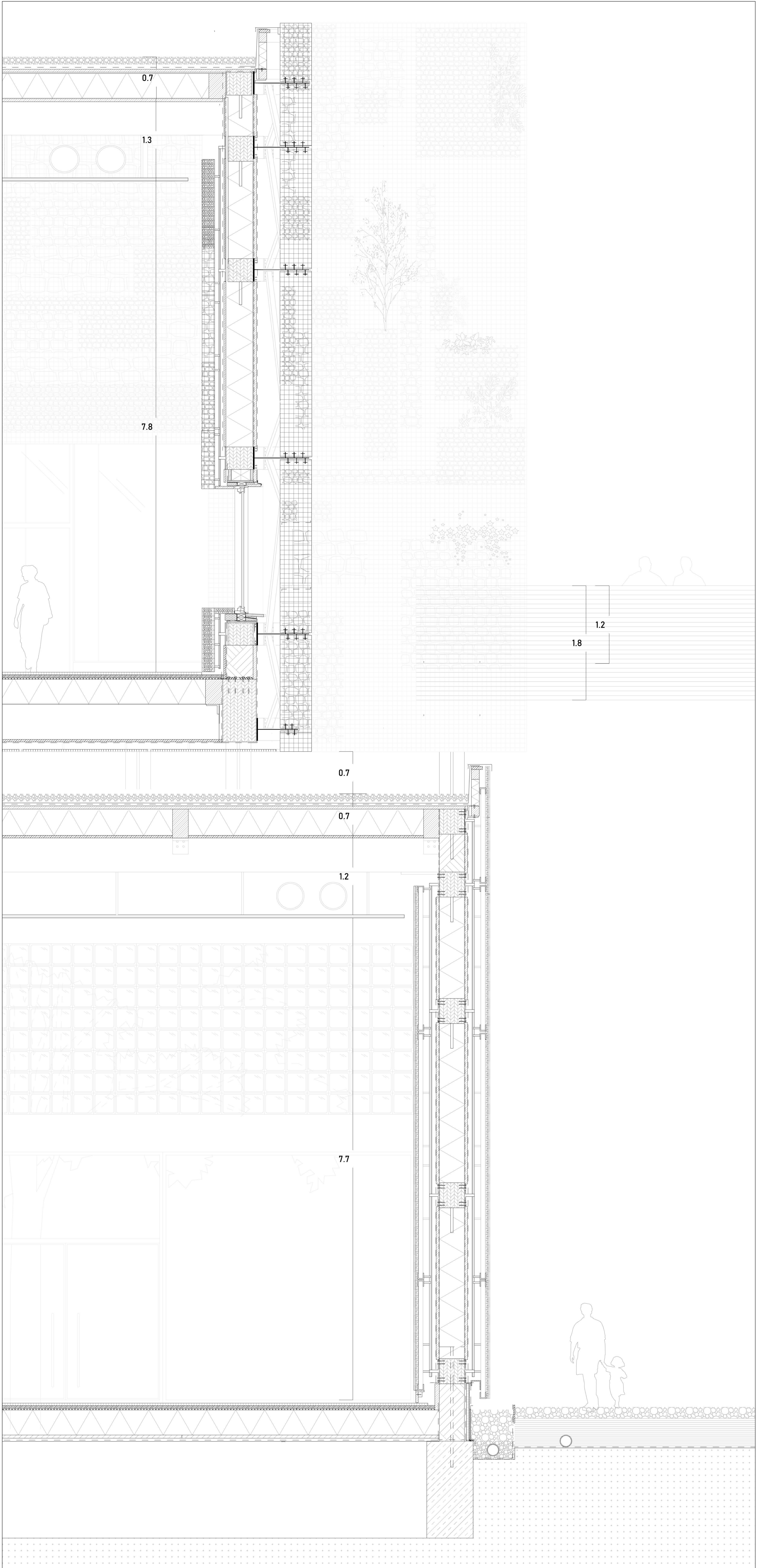


DETAIL I

1: 100
GF \ + 1 FLOOR

MILKBAR
BOXING GYM
STAIRWALL

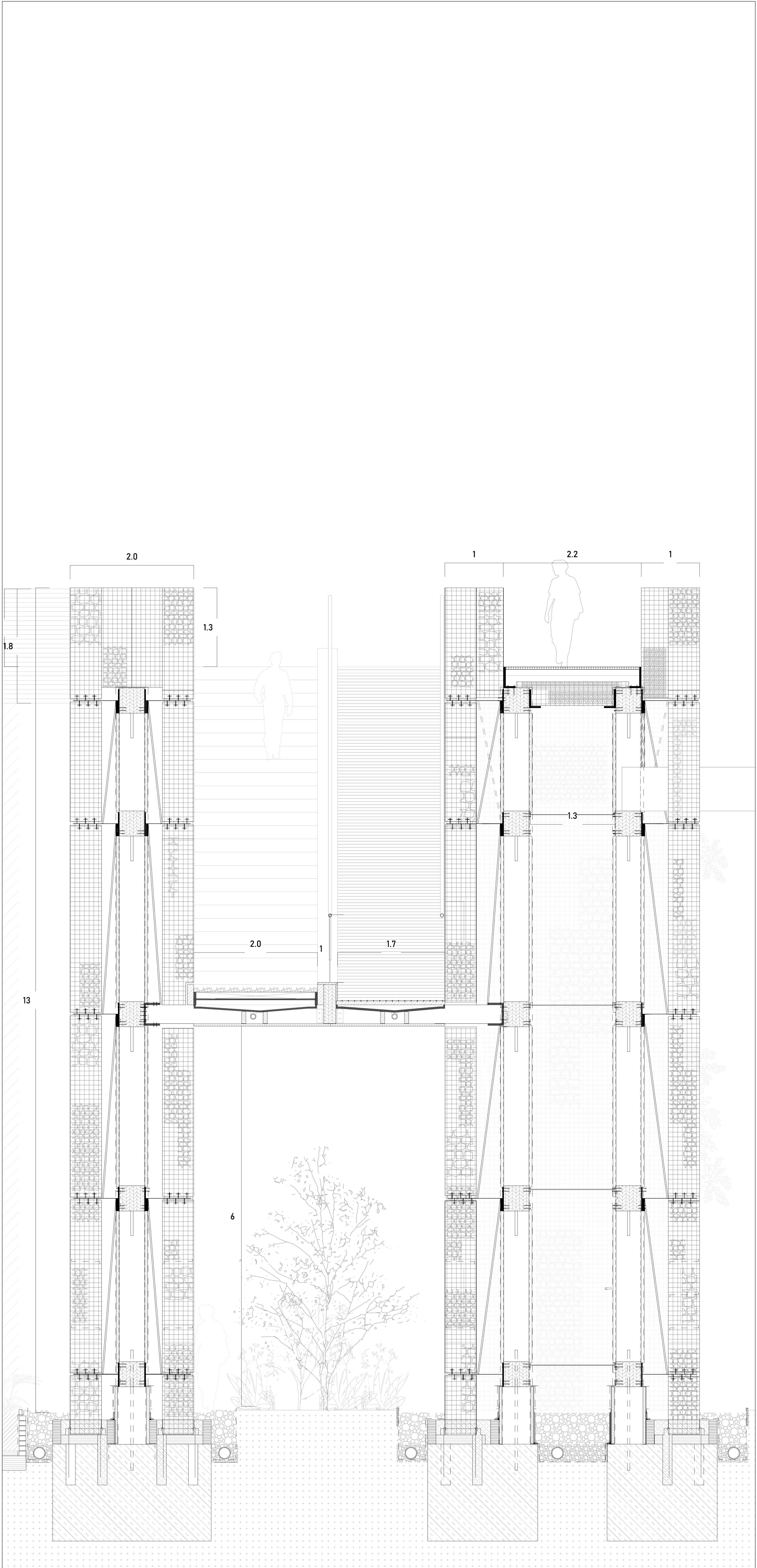
IN | OUT



DETAIL II

1:20
SECTION A

MILK BAR & BOX GYM
IN | OUT

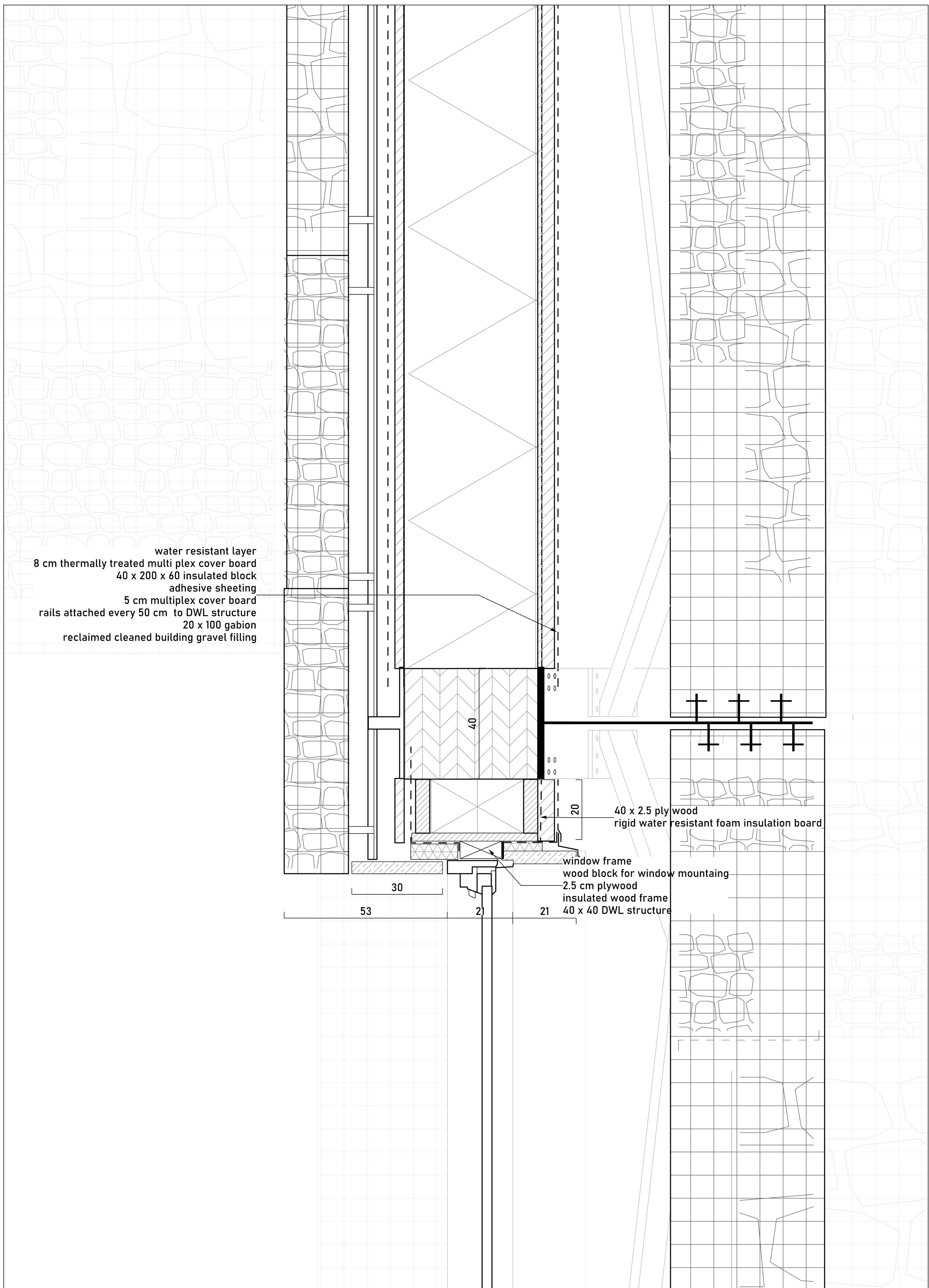


DETAIL III

1:20
SECTION B

STAIR WALL

OUT | OUT



water resistant layer
 8 cm thermally treated multi plex cover board
 40 x 200 x 60 insulated block
 adhesive sheeting
 5 cm multiplex cover board
 rails attached every 50 cm to DWL structure
 20 x 100 gabion
 reclaimed cleaned building gravel filling

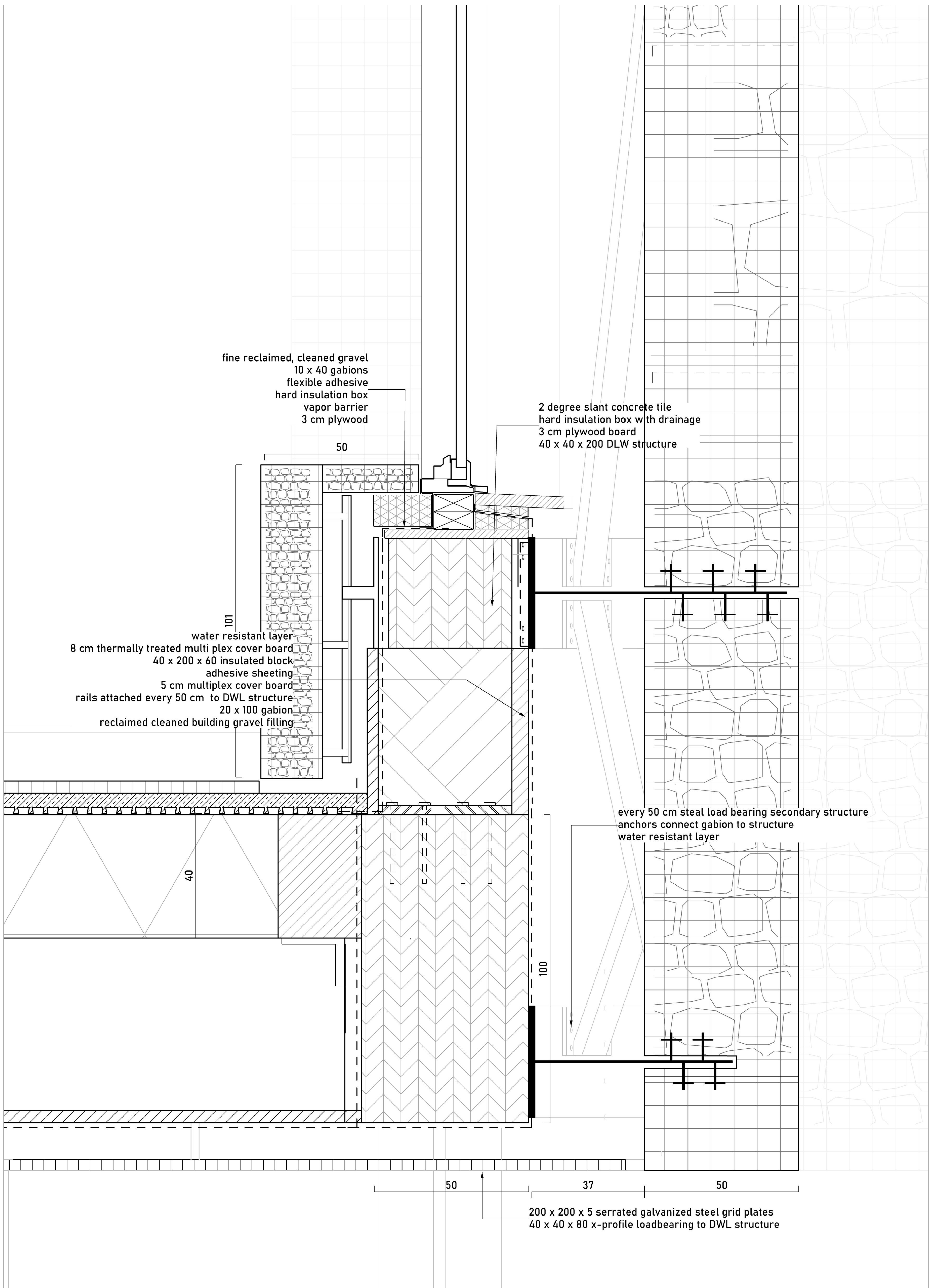
40 x 2.5 plywood
 rigid water resistant foam insulation board

window frame
 wood block for window mounting
 2.5 cm plywood
 insulated wood frame
 40 x 40 DWL structure

DETAIL A

1: 5
 + 1 FLOOR

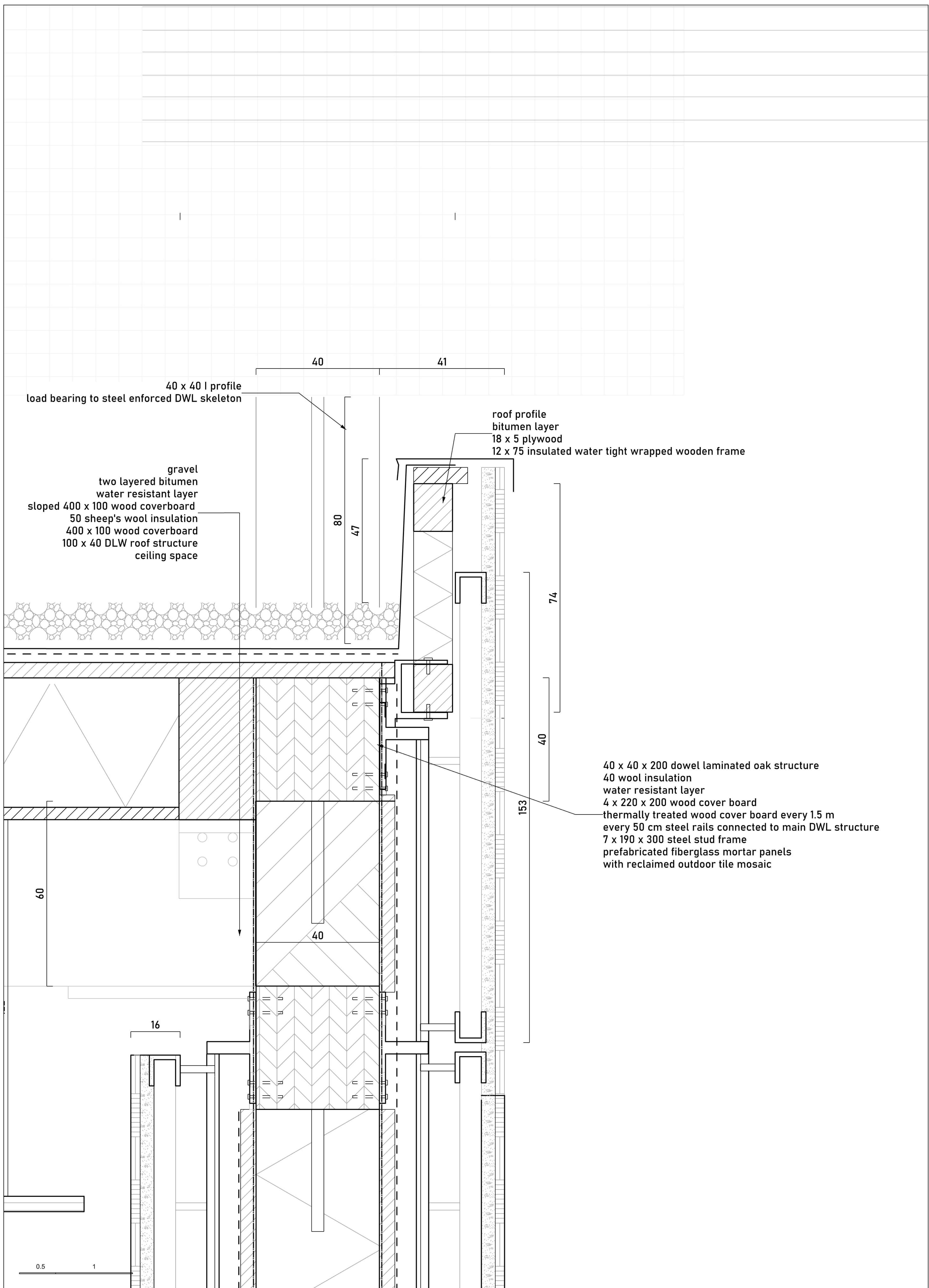
WINDOW FRAME TOP
 DLW STRUCTURE
 GABION WALL
 IN / OUT



DETAIL B

1:5
+ 1 FLOOR

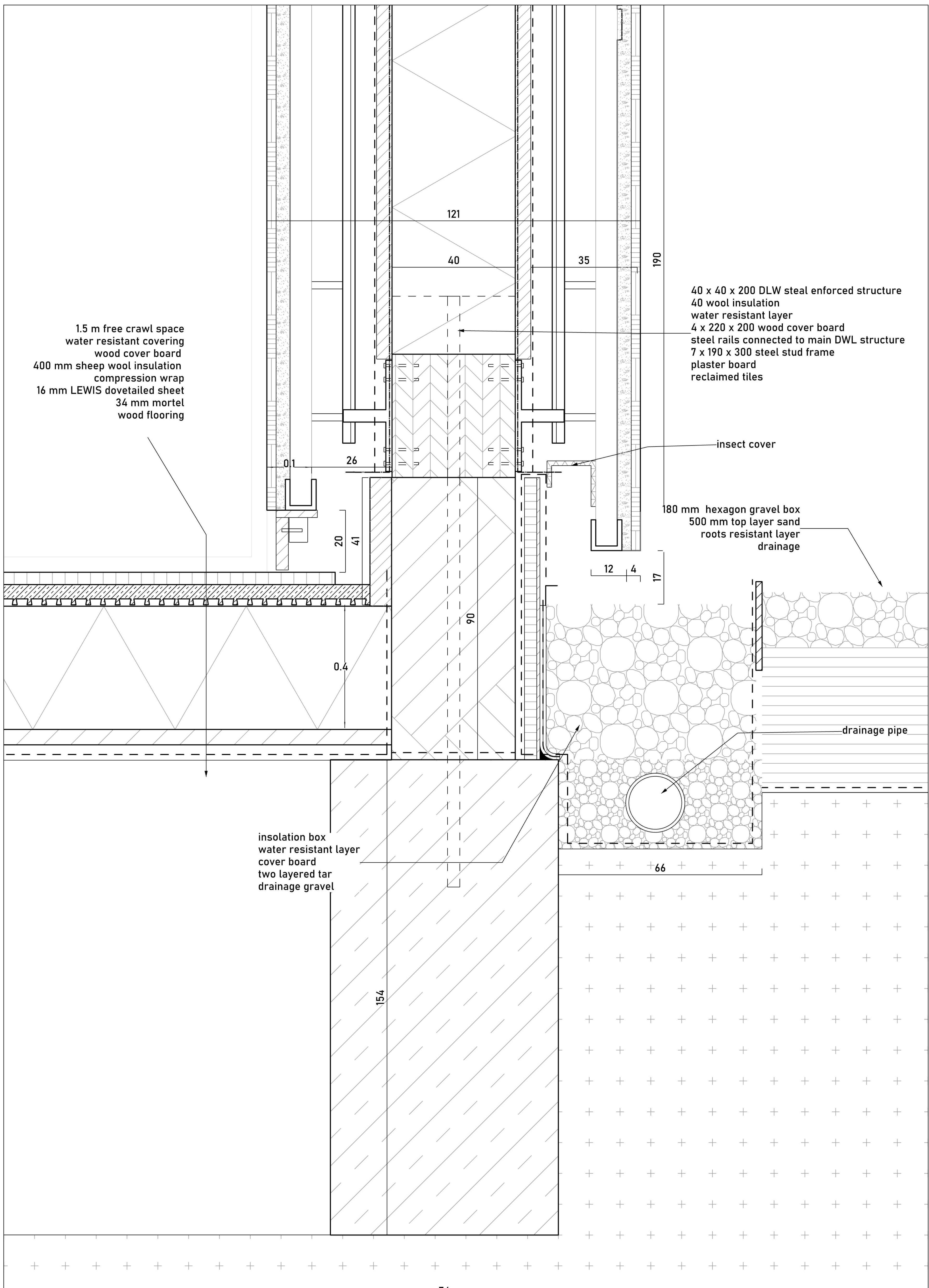
WINDOW FRAME BOTTOM
 DLW STRUCTURE
 GABION WALL
 FLOOR
 CANTILEVER
 IN / OUT



DETAIL C

1:5
GROUND FLOOR

ROOF
DLW STRUCTURE
GABION WALL
CEILING
IN | OUT



1.5 m free crawl space
 water resistant covering
 wood cover board
 400 mm sheep wool insulation
 compression wrap
 16 mm LEWIS dovetailed sheet
 34 mm mortel
 wood flooring

40 x 40 x 200 DLW steel enforced structure
 40 wool insulation
 water resistant layer
 4 x 220 x 200 wood cover board
 steel rails connected to main DWL structure
 7 x 190 x 300 steel stud frame
 plaster board
 reclaimed tiles

insect cover

180 mm hexagon gravel box
 500 mm top layer sand
 roots resistant layer
 drainage

drainage pipe

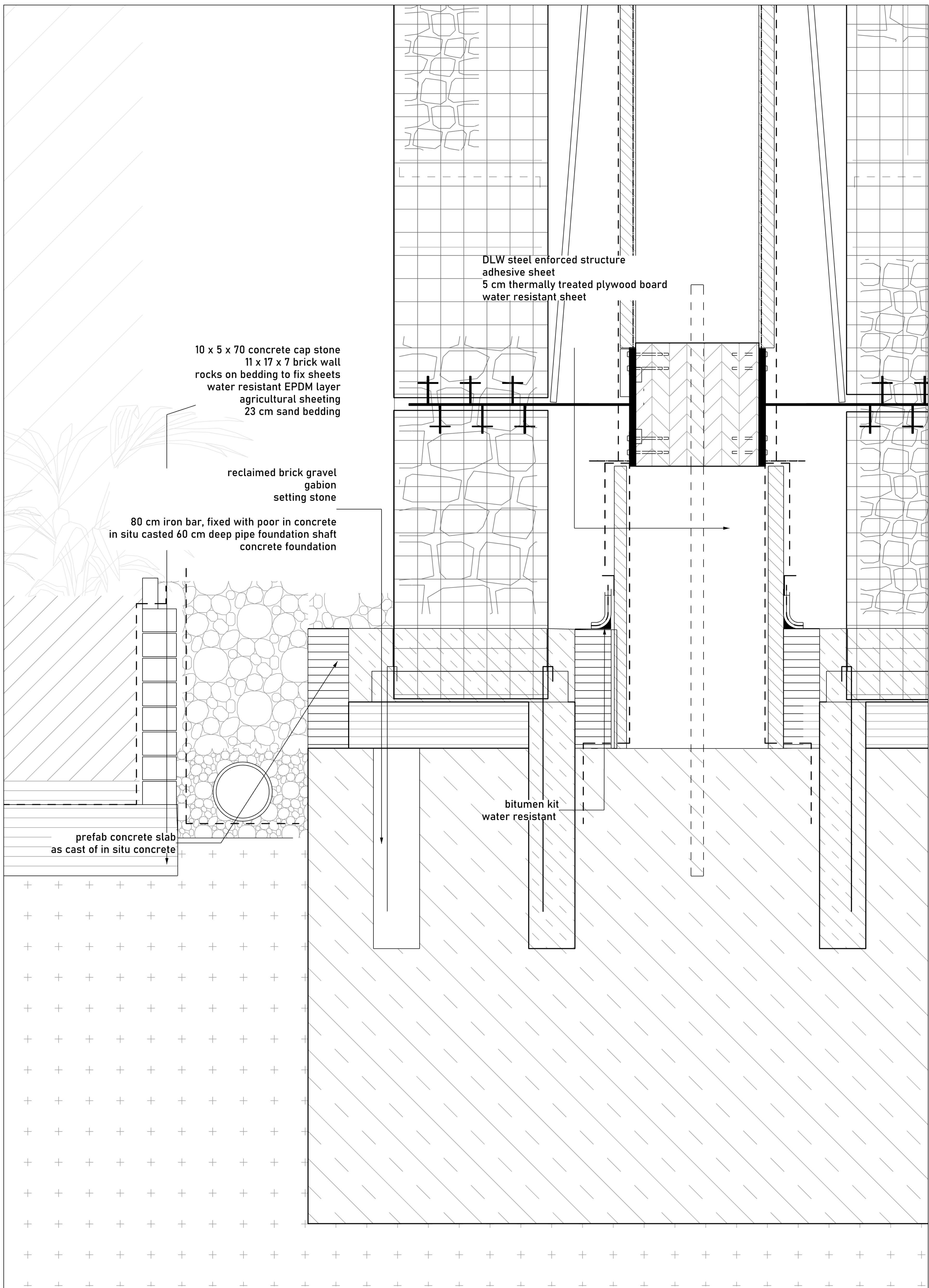
insolation box
 water resistant layer
 cover board
 two layered tar
 drainage gravel

DETAIL D

1: 5
 GROUND FLOOR

FLOOR
 GROUND CONNECTION
 PREFABRICATED MOSAIC PANELS
 FOUNDATION

IN | OUT



10 x 5 x 70 concrete cap stone
 11 x 17 x 7 brick wall
 rocks on bedding to fix sheets
 water resistant EPDM layer
 agricultural sheeting
 23 cm sand bedding

reclaimed brick gravel
 gabion
 setting stone

80 cm iron bar, fixed with poor in concrete
 in situ casted 60 cm deep pipe foundation shaft
 concrete foundation

DLW steel enforced structure
 adhesive sheet
 5 cm thermally treated plywood board
 water resistant sheet

prefab concrete slab
 as cast of in situ concrete

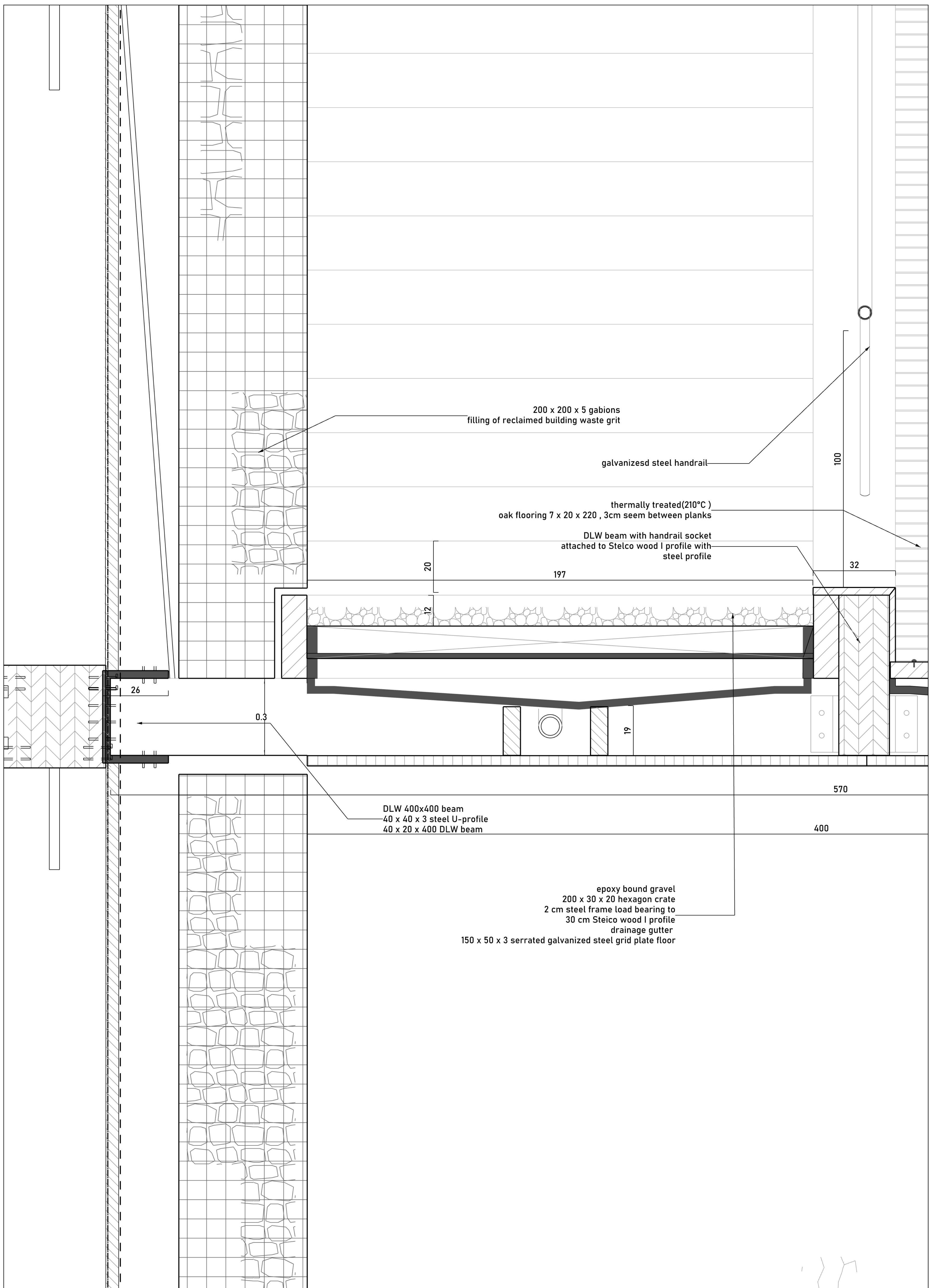
bitumen kit
 water resistant

DETAIL E

1:5
 GROUND FLOOR

GABION WALL
 DLW OAK STRUCTURE
 FOUNDATION
 GROUND CONNECTION

OUT | OUT

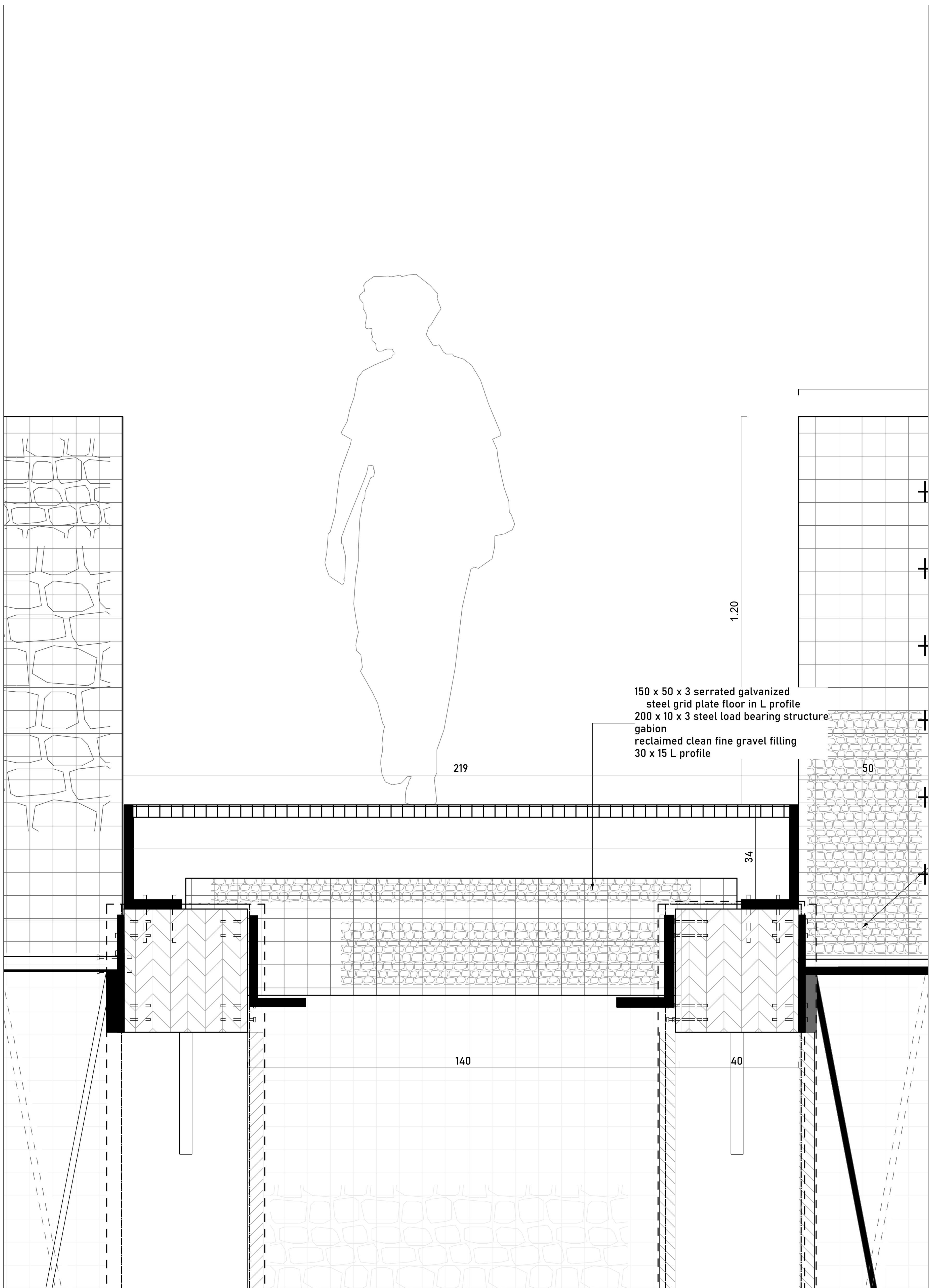


DETAIL F

1:5
STAIR WALL

GABION WALL
DLW OAK STRUCTURE
STEPS
STEEL FRAME

OUT | OUT

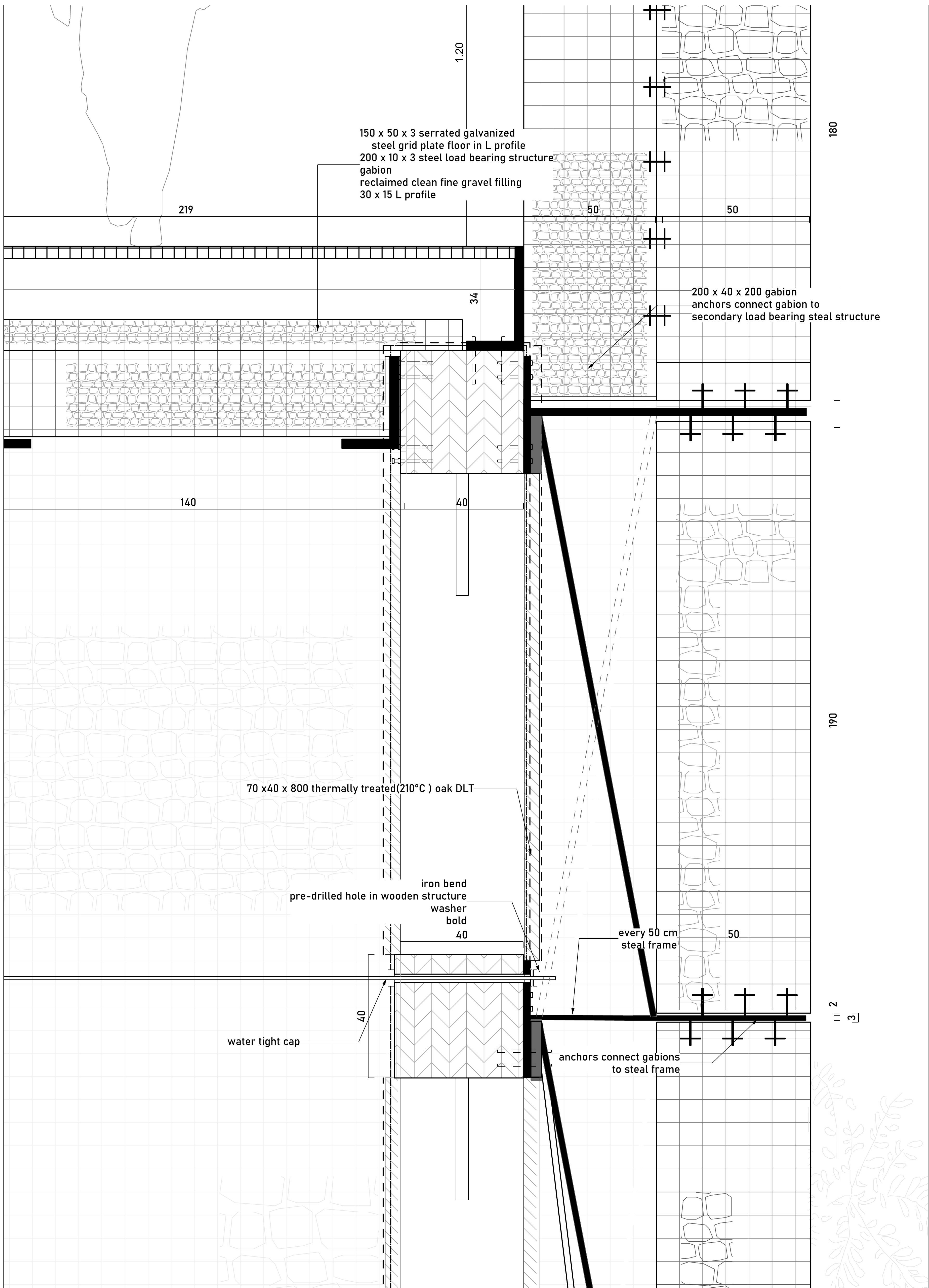


DETAIL G

1: 5
 STAIR WALL

GABION WALL
 DLW OAK STRUCTURE
 STEEL GRID
 STEEL FRAME

OUT | OUT



DETAIL H

1:5
 STAIR WALL

GABION WALL
 DLW OAK STRUCTURE
 TENSION BAR
 STEEL FRAME

OUT | OUT



STRUCTURE

DOWEL LAMINATED OAK WOOD SKELETON
LOCALLY STEEL ENFORCED
CARRIES LOAD OF DLW SKELETON ABOVE