

First light demonstration of the integrated superconducting spectrometer

Endo, Akira; Karatsu, Kenichi; Bosma, Sjoerd; Ikarashi, Soh; Klapwijk, Teun M.; Llombart, Nuria; Pascual Laguna, Alejandro; Thoen, David J.; de Visser, Pieter J.; Yurduseven, Ozan

DOI

[10.1038/s41550-019-0850-8](https://doi.org/10.1038/s41550-019-0850-8)

Publication date

2019

Document Version

Final published version

Published in

Nature Astronomy

Citation (APA)

Endo, A., Karatsu, K., Bosma, S., Ikarashi, S., Klapwijk, T. M., Llombart, N., Pascual Laguna, A., Thoen, D. J., de Visser, P. J., Yurduseven, O., Baselmans, J. J. A., & More Authors (2019). First light demonstration of the integrated superconducting spectrometer. *Nature Astronomy*, 3(11), 989-996. <https://doi.org/10.1038/s41550-019-0850-8>

Important note

To cite this publication, please use the final published version (if applicable). Please check the document version above.

Copyright

Other than for strictly personal use, it is not permitted to download, forward or distribute the text or part of it, without the consent of the author(s) and/or copyright holder(s), unless the work is under an open content license such as Creative Commons.

Takedown policy

Please contact us and provide details if you believe this document breaches copyrights. We will remove access to the work immediately and investigate your claim.

Green Open Access added to TU Delft Institutional Repository

'You share, we take care!' - Taverne project

<https://www.openaccess.nl/en/you-share-we-take-care>

Otherwise as indicated in the copyright section: the publisher is the copyright holder of this work and the author uses the Dutch legislation to make this work public.

First light demonstration of the integrated superconducting spectrometer

Akira Endo^{1,2*}, Kenichi Karatsu^{1,3}, Yoichi Tamura⁴, Tai Oshima^{5,6}, Akio Taniguchi⁴, Tatsuya Takekoshi^{7,8}, Shin'ichiro Asayama⁵, Tom J. L. C. Bakx^{4,5,9}, Sjoerd Bosma¹, Juan Bueno³, Kah Wuy Chin^{5,10}, Yasunori Fujii⁵, Kazuyuki Fujita¹¹, Robert Huiting³, Soh Ikarashi¹, Tsuyoshi Ishida⁷, Shun Ishii^{5,12}, Ryohei Kawabe^{5,6,10}, Teun M. Klapwijk^{12,13}, Kotaro Kohno^{7,14}, Akira Kouchi¹¹, Nuria Llombart¹, Jun Maekawa⁵, Vignesh Murugesan³, Shunichi Nakatsubo¹⁵, Masato Naruse¹⁶, Kazushige Ohtawara⁵, Alejandro Pascual Laguna^{1,3}, Junya Suzuki¹⁷, Koyo Suzuki⁴, David J. Thoen^{1,2}, Takashi Tsukagoshi⁵, Tetsutaro Ueda⁴, Pieter J. de Visser³, Paul P. van der Werf¹⁸, Stephen J. C. Yates¹⁹, Yuki Yoshimura¹⁰, Ozan Yurduseven¹ and Jochem J. A. Baselmans^{1,3}

Ultra-wideband, three-dimensional (3D) imaging spectrometry in the millimeter-submillimeter (mm-submm) band is an essential tool for uncovering the dust-enshrouded portion of the cosmic history of star formation and galaxy evolution¹⁻³. However, it is challenging to scale up conventional coherent heterodyne receivers⁴ or free-space diffraction techniques⁵ to sufficient bandwidths (≥ 1 octave) and numbers of spatial pixels^{2,3} ($> 10^2$). Here, we present the design and astronomical spectra of an intrinsically scalable, integrated superconducting spectrometer⁶, which covers 332–377 GHz with a spectral resolution of $F/\Delta F \sim 380$. It combines the multiplexing advantage of microwave kinetic inductance detectors (MKIDs)⁷ with planar superconducting filters for dispersing the signal in a single, small superconducting integrated circuit. We demonstrate the two key applications for an instrument of this type: as an efficient redshift machine and as a fast multi-line spectral mapper of extended areas. The line detection sensitivity is in excellent agreement with the instrument design and laboratory performance, reaching the atmospheric foreground photon noise limit on-sky. The design can be scaled to bandwidths in excess of an octave, spectral resolution up to a few thousand and frequencies up to ~ 1.1 THz. The miniature chip footprint of a few cm^2 allows for compact multi-pixel spectral imagers, which would enable spectroscopic direct imaging and large-volume spectroscopic surveys that are several orders of magnitude faster than what is currently possible¹⁻³.

Galaxies grow through mergers and by drawing gas from their environment, while internally forming new stars and feeding matter

onto their central supermassive black hole⁸. These evolutionary processes occurred in a decadal redshift range of $1+z \sim 1-10$. Hence, observationally studying a significant fraction of this history requires a very broad spectral bandwidth of a few octaves. The most violent phases of star formation occur in thick clouds of dust, which absorb the ultraviolet to optical light and re-radiate this light in the far-infrared to mm-submm wavelength range, giving rise to optically faint submm-bright galaxies (SMGs)⁹. However, spectroscopic redshift measurements and subsequent studies of the spectral lines from these SMGs are severely limited by the narrow bandwidth (up to ~ 36 GHz; ref. ⁴) and small number of spatial pixels (exceptionally up to 64 pixels¹⁰) of conventional coherent spectrometers, which require multiple tunings and long exposure times. Quasi-optical spectrometers have shown wideband performance⁵, but dispersive optical elements for the mm-submm band are large, making it difficult to scale this type of spectrometer to many spatial pixels.

The integrated superconducting spectrometer (ISS)¹¹⁻¹³ is an instrument concept that was invented exactly to fill the gap between imaging and high-resolution spectroscopy. The key concept of the ISS is to perform spectroscopy in a superconducting circuit fabricated on a small chip of a few cm^2 in area, using an array of bandpass filters as the dispersive element analogous to a classical filterbank for lower microwave frequencies. The main advantage of an ISS (or grating spectrometer) over a Fourier transform spectrometer is that it is a dispersive spectrometer, which reduces the detection bandwidth and hence photon noise contribution, giving an improvement in the observing speed¹⁴. The ISS instantaneous bandwidth is limited by the antenna bandwidth and the filter design, which allows

¹Faculty of Electrical Engineering, Mathematics and Computer Science, Delft University of Technology, Delft, The Netherlands. ²Kavli Institute of NanoScience, Faculty of Applied Sciences, Delft University of Technology, Delft, The Netherlands. ³SRON—Netherlands Institute for Space Research, Utrecht, The Netherlands. ⁴Division of Particle and Astrophysical Science, Graduate School of Science, Nagoya University, Nagoya, Japan. ⁵National Astronomical Observatory of Japan, Mitaka, Japan. ⁶The Graduate University for Advanced Studies (SOKENDAI), Mitaka, Japan. ⁷Institute of Astronomy, Graduate School of Science, The University of Tokyo, Mitaka, Japan. ⁸Graduate School of Informatics and Engineering, The University of Electro-Communications, Chofu, Japan. ⁹School of Physics & Astronomy, Cardiff University, Cardiff, UK. ¹⁰Department of Astronomy, School of Science, University of Tokyo, Tokyo, Japan. ¹¹Institute of Low Temperature Science, Hokkaido University, Sapporo, Japan. ¹²Joint ALMA Observatory, Santiago, Chile. ¹³Physics Department, Moscow State Pedagogical University, Moscow, Russia. ¹⁴Research Center for the Early Universe, Graduate School of Science, The University of Tokyo, Tokyo, Japan. ¹⁵Institute of Space and Astronautical Science, Japan Aerospace Exploration Agency, Sagami, Japan. ¹⁶Graduate School of Science and Engineering, Saitama University, Saitama, Japan. ¹⁷High Energy Accelerator Research Organization (KEK), Tsukuba, Japan. ¹⁸Leiden Observatory, Leiden University, Leiden, The Netherlands. ¹⁹SRON—Netherlands Institute for Space Research, Groningen, The Netherlands. *e-mail: a.endo@tudelft.nl

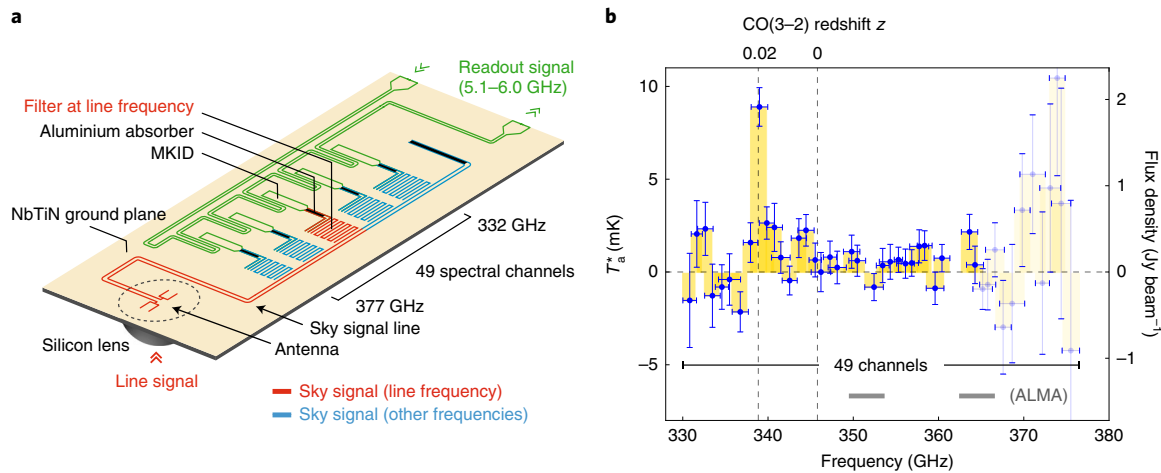


Fig. 1 | ISS detection of redshifted CO(3–2) line emission from the LIRG VV 114. a, Schematic of the ISS chip of DESHIMA. The flow of a redshifted CO signal (339 GHz) is indicated in red, whereas the flow of signal at all other frequencies is indicated in blue. The filterbank consists of 49 spectral channels, of which five are depicted here. Each spectral channel consists of a bandpass filter and an MKID. Only the filter with a passband that matches the redshifted astronomical line frequency resonates, and delivers power to the MKID at its output. The MKID measures the amount of signal power that is absorbed in the aluminium section (black). The astronomical signal line is terminated with a coplanar waveguide (CPW) with an aluminium centre strip (black) to prevent reflective standing waves by absorbing the remaining power. The flow of the readout signal (5.1–6.0 GHz) is indicated in green. All MKIDs are read out simultaneously through a common microwave readout CPW. **b**, Spectrum of VV 114 measured with the ISS. The response of each channel of the ISS is plotted as a function of the peak frequency of the response curves presented in Fig. 2i. The previously reported peak frequency of CO is indicated²². The horizontal error bars and the yellow shading under them indicate the full-width at half-maximum (FWHM) of the channel response. The vertical error bars indicate the 1σ noise level per channel. The right-hand vertical axis is calculated from the antenna temperature T_a assuming frequency-independent values of $\eta_{\text{MB}} = 0.34$ for the main-beam efficiency and $\Omega_{\text{MB}} = 1.9 \times 10^{-8}$ sr for the main-beam solid angle. The channels above 365 GHz have a low SNR because of the low atmospheric transmission. The instantaneous bandwidth of ALMA band 7 is indicated for comparison⁴³.

1:2 or even 1:3 bandwidth^{11–13,15,16}. Many spectrometers could be integrated on a single wafer, allowing for monolithic spectroscopic-imaging focal-plane architectures. Because the detectors are incoherent (that is, they measure only the power and not the phase), the sensitivity of the ISS is not subject to quantum noise, giving ISSs a fundamental sensitivity advantage over heterodyne receivers⁵ when operated in low-foreground/background conditions typical for a space observatory^{17,18}. Key technological ingredients of the ISS have been demonstrated in the laboratory, including the filterbank^{19,20}, antenna coupling^{16,20} and detection of emission lines from a gas cell⁶.

In this Letter, we present the astronomical spectra obtained with an ISS, from the on-sky test of Deep Spectroscopic High-redshift Mapper (DESHIMA)⁶ on the Atacama Submillimeter Telescope Experiment (ASTE) 10 m telescope²¹. DESHIMA instantaneously observes the 332–377 GHz band in fractional frequency steps of $F/\Delta F \sim 380$, matched to the ~ 330 – 365 GHz atmospheric window (Fig. 2h,i). The instrument sensitivity is photon-noise-limited, reaching a noise equivalent power (NEP) of $\sim 3 \times 10^{-16}$ W Hz^{-0.5} under optical loading power levels representative of observing conditions on a ground-based submm telescope. The detailed design and laboratory characterization of DESHIMA have recently been reported⁶. Here we will focus on the on-telescope measurements.

The design and working principle of the DESHIMA ISS chip is illustrated in Fig. 1, using the detection of a redshifted extragalactic emission line using this technique from VV 114, a luminous infrared galaxy (LIRG). First, the lens-antenna on the chip receives the astronomical signal from the telescope and optics, and couples it to a small transmission line. The signal then enters the filterbank section that consists of 49 spectroscopic channels. Micrographs of a few spectral channels are presented in Fig. 2c–g. Each filter is a superconducting submm-wave resonator, with a resonance frequency that sets the peak of its passband. Because the signal from VV 114 contains only a single strong CO(3–2) line, only one filter intercepts the signal and delivers power to the MKID at its output. The

responding channel has a passband of 1.0 GHz around 339.0 GHz, which is consistent with the CO(3–2) rest frequency of 345.796 GHz and the redshift $z = 0.02$ of VV 114 (ref. 22).

We evaluated DESHIMA on the ASTE telescope in the period from October to November 2017. The layout of DESHIMA in the ASTE cabin is schematically presented in Fig. 2a. Before the measurements on sky, we verified that the instrument optical sensitivity of DESHIMA in terms of the NEP was not affected by the ASTE cabin environment using the same hot–cold measurement technique as used in the laboratory tests⁶. The response of the MKIDs to the sky signal was calibrated and linearized using skydip measurements (see Methods section ‘Calibration of the sky signal response’). The telescope beam shape and main beam efficiency were measured on Mars (see Methods section ‘Beam efficiency’).

We demonstrate the key applications of this instrument, as a redshift machine and as a fast multi-line spectral imager of large areas, by utilizing the on-sky measurements, which we also analyse to demonstrate the sensitivity achieved. The measurement of a cosmologically redshifted molecular line with an ISS is shown in Fig. 1b. The width of the line is comparable (~ 0.5 GHz; ref. 22) to the spectrometer resolution, which is an optimum condition for achieving both high sensitivity and a wide instantaneous band for a fixed number of detectors (see Methods section ‘Optimum frequency resolution’). Using a combination of a chopper wheel and slow (0.5 Hz) nodding of the ASTE telescope (see Methods section ‘Position-switching observations’), we obtained a CO line signal-to-noise ratio (SNR) of ~ 9 in an on-source integration time of 12.8 min. This method can be applied to targeted, wideband multi-line spectroscopy of high- z SMGs to identify their redshift and study their emission line spectra.

The second result is the successful acquisition of wideband spectral maps using on-the-fly (OTF) mapping. In Fig. 3a we show a three-colour composite map of the Orion nebula, which combines channel maps of CO(3–2), HCN(4–3) and HCO⁺ (4–3), as

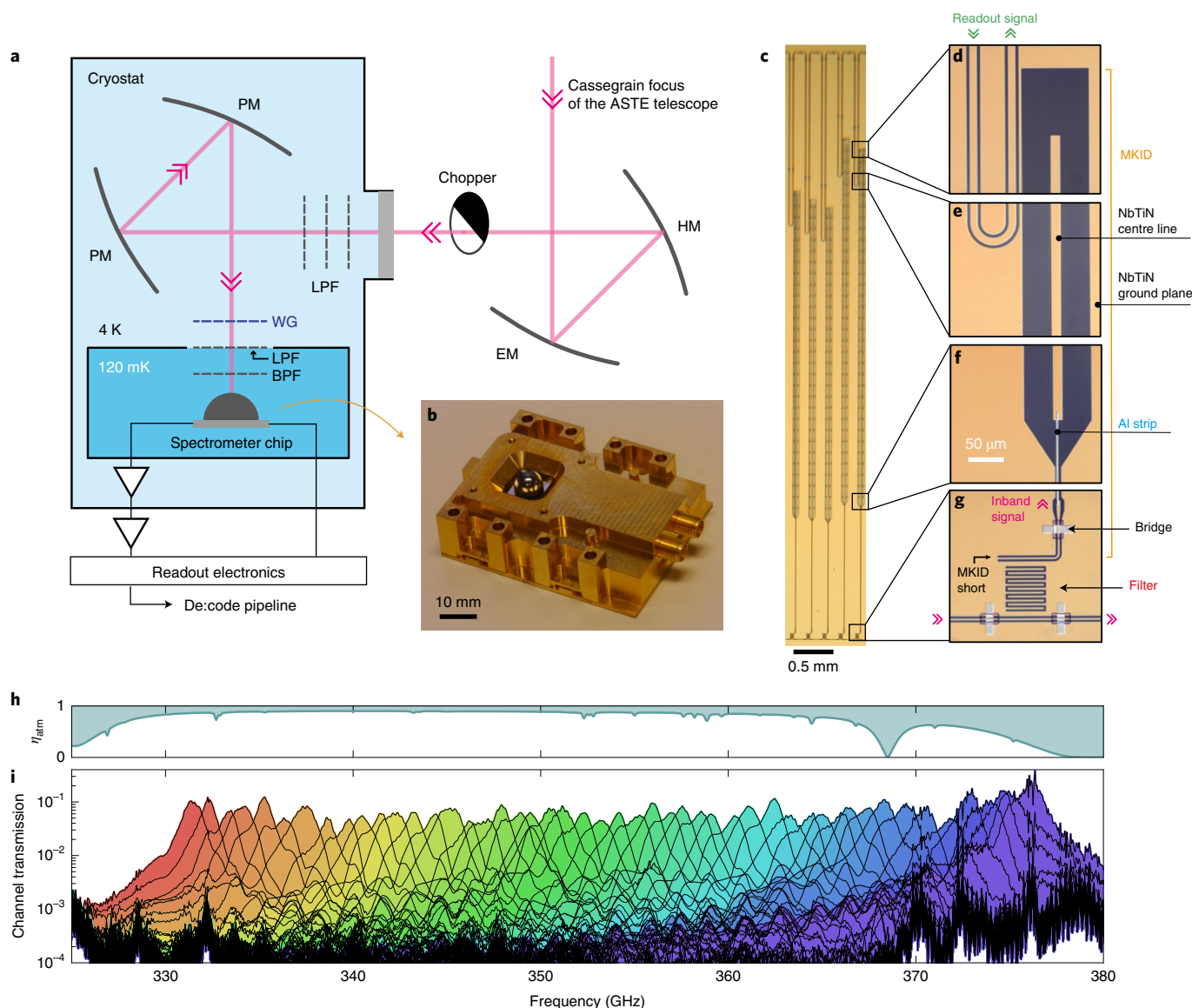


Fig. 2 | DESHIMA spectrometer system in the ASTE telescope cabin. **a**, The submm signal from the ASTE telescope is coupled to the DESHIMA cryostat window with an ellipsoidal tertiary mirror (EM) and a hyperbolic quaternary mirror (HM) in a cross-Dragonian configuration. Inside the cryostat, the signal is guided to the ISS chip through an optics tube, which consists of two parabolic mirrors (PM) and a stack of low-pass filters (LPF) and baffles, a wire grid (WG) polarizer and a final bandpass filter (BPF). The response of all MKIDs are read out simultaneously at 160 Hz through one pair of coax lines that are connected to the radio-frequency readout electronics⁶. **b**, The ISS chip in a copper housing. The Si lens is visible. **c**, Micrograph of a subset of five channels of the filterbank. **d–g**, Close-up view of one of the spectral channels of the filterbank. The filter (**g**) is an interdigitated pattern etched in NbTiN, acting as a resonant bandpass filter. On both sides of the filter, the ground planes of the sky signal line are connected with aluminium bridges over a block of ultraviolet-patterned polyimide. Every MKID (**d–g**) consists of a short-ended NbTiN CPW that couples to the filter (**g**), a narrow CPW with an aluminium centre line (**f,g**) and an open-ended wide NbTiN CPW (**d–f**). The MKID is coupled to the microwave readout line near the open end (**d,e**). **h**, Atmospheric transmission at zenith as a function of frequency, calculated³⁰ assuming a PWV of 0.5 mm. **i**, Spectral response of all 49 filter channels of the filterbank, normalized to the signal power at the entrance of the filterbank. The response (vertical axis) was measured while sweeping the frequency (horizontal axis) of a narrowband signal that was radiated into the spectrometer from a photomixing submm-wave source⁶.

presented in Fig. 3b–d. The OTF map captures the extended structure of the CO line²³, whereas the HCN and HCO⁺ lines are more localized. In making the line intensity maps, the signal component common to all channels was subtracted as the baseline ‘continuum’, as indicated by the horizontal dashed line in the spectrum presented in Fig. 3e. Because this component contains signal from many emission lines unresolved by DESHIMA, we complement this result with a spectral map of the nearby barred spiral galaxy NGC 253, which exhibits CO(3–2) as a single dominant emission line with clear line-free channels around it. The map of NGC 253 also has well-defined

emission-free positions in the direction vertical to its disk. The DESHIMA CO(3–2) map of NGC 253 captures the extended emission along the bar²⁴. The Orion and NGC 253 maps together show that ISSs can be operated in OTF mode, by removing fluctuations of the atmosphere and the instrument in a manner similar to observations with coherent spectrometers.

The sensitivity of DESHIMA has been measured from the observation of the post-asymptotic giant branch (AGB) star IRC+10216. This source exhibits a strong HCN(4–3) line that is spatially unresolved with the DESHIMA/ASTE beam. After an on-source

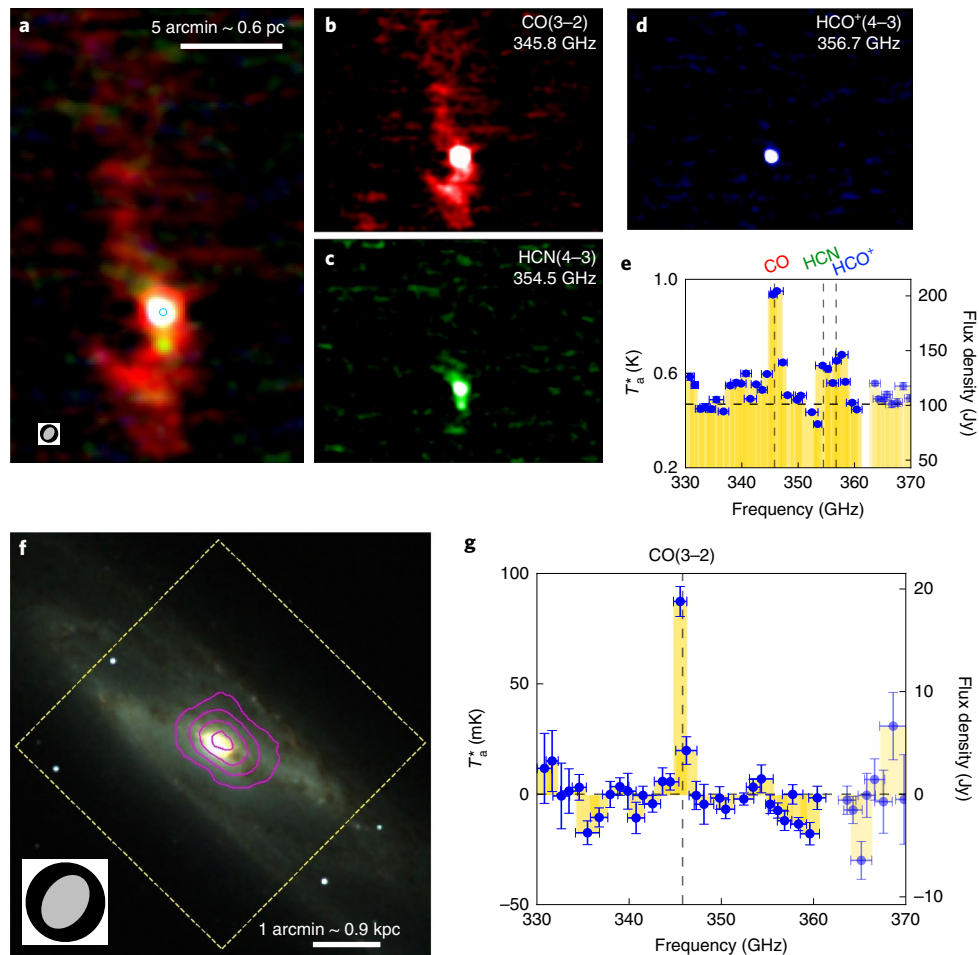


Fig. 3 | DESHIMA spectral maps of the Orion nebula and the barred spiral galaxy NGC 253. **a**, DESHIMA CO(3-2)/HCN(4-3)/HCO⁺ (4-3) RGB image of the Orion nebula. The box at the bottom left shows the size of the 43''-diameter circular aperture used for photometry (black), together with the best-fit 2D Gaussian beam at half-power level (grey). The ellipse is set at the typical position angle of the beam, which rotated by up to $\pm 45^\circ$ with respect to the map during the observations of both Orion and NGC 253 (**f**). The effective resolution of the images shown in **a–d** and **f** is $\sim 39''$, given by the convolution of the aperture and the beam. **b–d**, Individual DESHIMA CO(3-2), HCN(4-3) and HCO⁺ (4-3) maps used in the RGB map. The images are continuum-subtracted. **e**, DESHIMA spectrum of the Orion KL region based on aperture photometry (blue circle in **a**). The spectrum is plotted in the same manner as the spectrum in Fig. 1b. (Many of the vertical error bars are smaller than the points.) The horizontal dashed line indicates the continuum flux at each position derived by averaging assumed emission-free channels. **f**, DESHIMA CO(3-2) map (contours) of NGC 253 on a 2MASS *JHK* RGB image. The contour levels are 3, 6, 9 and 12σ . The position offset between the CO brightest point and the brightest point in the 2MASS image is $\sim 4.5''$, which is comparable to the typical pointing error of the observations presented in this Letter. The yellow dashed line shows the coverage of the DESHIMA observations. **g**, The DESHIMA spectrum for the CO brightest point of NGC 253 based on aperture photometry. The 1σ noise level is derived from the map, after smoothing with the 43''-diameter circular aperture.

integration time of $t_{\text{on}} \sim 10^3$ s, a HCN line SNR of ~ 67 was reached, as presented in Fig. 4a,b. The $\text{SNR} \propto t_{\text{on}}^{0.5}$ dependence shows good stability during integration. The noise equivalent flux density (NEFD) per channel has been estimated from this dataset (Fig. 4c). For the frequency range in which the atmosphere is most transparent (Fig. 2h), a NEFD of $\sim 2\text{--}3 \text{ Jy s}^{0.5} \text{ beam}^{-1}$ is reached. The NEFD inferred from the observation of VV 114 is similar, as can be seen in Fig. 4c, confirming that the estimation depends little on the observing conditions or on the properties of the source. This sensitivity would allow for example a 5σ detection of a [C II] line from a hyper-luminous infrared galaxy (HyLIRG) at redshift 4.2–4.7, with an on-source integration time of 8 h, as indicated in Fig. 4c. Furthermore, the blue bars in Fig. 4c indicate the on-sky NEFD predicted from the optical efficiency of DESHIMA measured in the laboratory⁶, in combination with the aperture efficiency we measured on Mars in this work (see Methods section ‘Beam efficiency’).

The excellent agreement between the instrument design, laboratory sensitivity and on-sky sensitivity shows that DESHIMA on ASTE reaches the foreground photon-noise limit. This means that the sensitivity is limited only by the foreground photon noise and by the coupling efficiency between the source and detector. The limiting factors here are the ISS chip design and the intrinsic coupling between the warm optics and the chip. The efficiency of the chip is currently ~ 0.08 , due to the design of the coplanar filters and the oversampling⁶. This can be improved to ~ 0.5 by adopting microstrip filters³⁰ based on amorphous silicon: we recently measured a loss tangent of $\tan\delta = 10^{-4}$ at ~ 35 GHz (S. Hähnle, private communication). Additionally, a more advanced filter geometry is needed to couple more than 50% of power into a single filter: an example would be to couple the power from several oversampled filters¹² into a single MKID²⁵. These developments^{12,20,25} provide a path to improving the chip efficiency. Regarding the optics, a careful

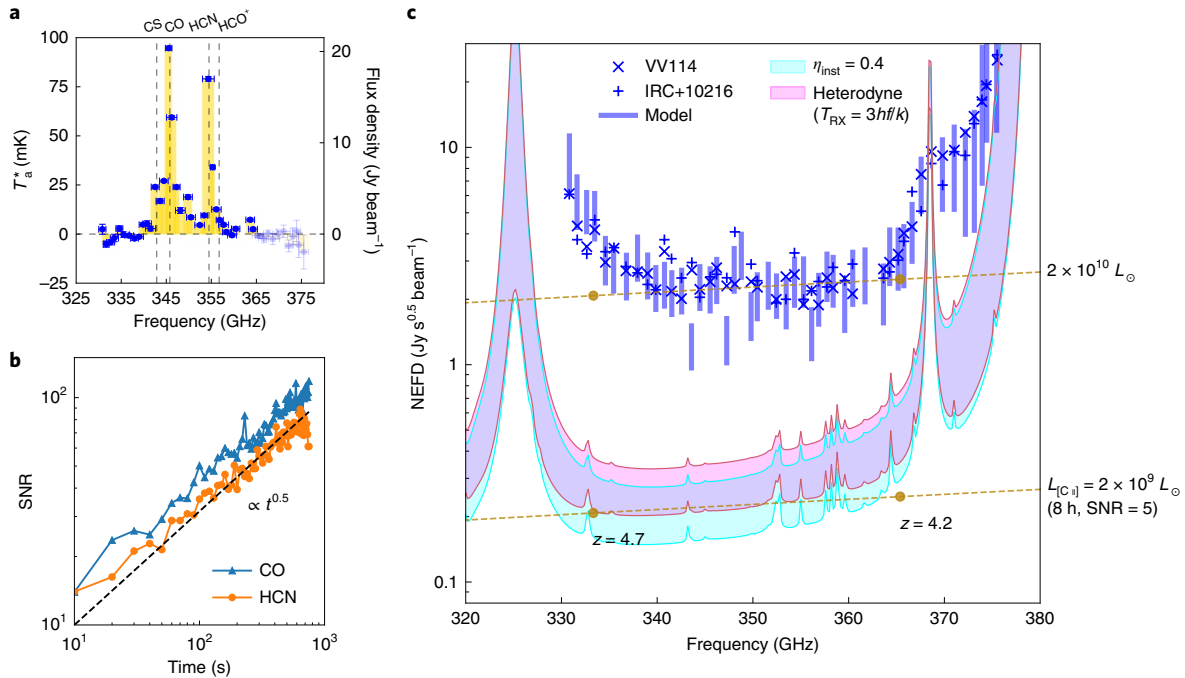


Fig. 4 | Foreground photon-noise-limited sensitivity of the ISS and its fundamental limits. **a**, Broadband DESHIMA spectrum of IRC+10216. The spectrum is plotted in the same manner as the spectrum in Fig. 1b. (Many of the vertical error bars are smaller than the points.) **b**, SNR of the HCN(4-3) and CO(3-2) lines as a function of the on-source integration time. The dashed line is a guide to the eye, showing a slope of $t^{0.5}$. **c**, NEFD of DESHIMA. The symbols 'x' and '+' show the NEFD of each frequency channel of DESHIMA measured during the observation of VV 114 and IRC+10216, respectively. The blue solid bars are the theoretical NEFD for the photon-noise-limited case (see Methods section 'Sensitivity'). The span in the model NEFD indicates the range of NEFD for a PWV in the atmosphere in the range of 0.5–1.5 mm. The area shaded in cyan represents a possible future improvement in which the instrument optical efficiency is improved from 0.02 (this work) to 0.4, and the telescope aperture efficiency is improved from 0.17 (see Methods section 'Beam efficiency') to 0.4. For comparison, the area shaded in pink indicates the sensitivity of a coherent receiver that has a receiver noise temperature of $T_{RX} = 3hf/k - 50$ K. We have assumed the same spectral resolution in the calculation of the shaded areas, corresponding to a filter $Q = F/\text{FWHM}$ of 300 that is equal to the average Q factor of the filters of DESHIMA⁶. The dashed curves indicate the NEFD level required to detect redshifted [C II] lines with line luminosities as indicated, at a SNR of 5 in 8 h.

selection of the quasi-optical filters, and using isotropic substrates (for example, silicon), can bring the transmission from the cryostat window to the on-chip antenna feed point from the current 0.22 to ~ 0.5 . As indicated in Fig. 4c, an instrument optical efficiency of 0.4 and a telescope aperture efficiency of 0.4 would allow easy detection of the unlensed ultra-luminous infrared galaxy (ULIRG) population at $z = 4.2$ – 4.5 with the [C II] line. In this case, the full system sensitivity on-sky becomes comparable to a state-of-the-art heterodyne receiver instrument²⁶, because both systems are limited mainly by the atmosphere. The ISS technology is highly scalable towards ultra-wide bandwidths and many spatial pixels. Half-wave microstrip resonators¹² are intrinsically able to be used as filters in a 1:2 bandwidth spectrometer coupled to a wideband antenna^{15,16}, a similar filter design with an open and a shorted end could be used in a 1:3 bandwidth. With the current density of channels in the filterbank, a 500 channel filterbank covering a 1:3 instantaneous bandwidth (for example, 240–720 GHz) at a resolution of $F/\Delta F = 500$ would still be as small as ~ 5 cm². The wide instantaneous bandwidth and sensitivity will easily allow simultaneous detection of multiple emission lines (for example CO, [C II])⁵ that is required to determine an unambiguous spectroscopic redshift. Furthermore, 3D integral field spectrographs²⁷ can be formed with a 2D array of such spectroscopic pixels³. Such an instrument will allow the exploration of cosmic large-scale structures with an unprecedented sensitivity and spatial scales, depicting the 3D distribution of galaxies with abundant molecular and atomic lines across the cosmological volume and time^{1–3,28}.

Methods

Calibration of the sky signal response. Conversion from the relative frequency response of the MKID to the line-of-sight brightness temperature of the sky (T_{sky}) is based on a model that uses the atmospheric transmission measured by DESHIMA itself. We conducted fast and wide scans of the telescope elevation ('skydip' observations) 22 times throughout the observing session, with an elevation range of 32–88°. The precipitable water vapour (PWV) values were typically in the range of 0.4–3.0 mm, with a mean value of 0.9 mm, according to the water vapour radiometers mounted on each telescope of the Atacama Large Millimeter/submillimeter Array (ALMA)²⁹, located in the vicinity of ASTE. We define x as the fractional change in MKID readout resonance frequency f , from when the instrument window is facing the blackened absorber on the chopper wheel at ambient temperature T_{amb} (Fig. 2a) to when the instrument looks at the sky with a brightness temperature T_{sky} through the telescope optics: $x \equiv \{f(T_{\text{sky}}) - f(T_{\text{amb}})\} / f(T_{\text{amb}})$. T_{sky} was calculated from

$$T_{\text{sky}} = \eta_{\text{fwd}}(1 - \eta_{\text{atm}})T_{\text{atm}} + (1 - \eta_{\text{fwd}})T_{\text{amb}} \quad (1)$$

where $\eta_{\text{fwd}} = 0.93$ is the telescope forward efficiency of ASTE. η_{atm} is the transmission coefficient of the atmosphere calculated³⁰ from the PWV and telescope elevation, taking into account the frequency response of each channel (Fig. 2i). We have assumed the physical temperature of the atmosphere T_{atm} to be equal to the outside ambient temperature T_{amb} measured with the weather monitor at the ASTE site. From a least- χ^2 fitting to the square-law $T_{\text{sky}} \propto x^2$ dependence for an aluminium-based MKID response⁶, we obtain a calibration model curve as shown in Supplementary Fig. 1b. We perform an iterative estimation of the PWV using all channels of the filterbank with η_{atm} , and from that the PWV, as a single, common free parameter. In this way we obtain a calibration model that has a dispersion of $\sim 4\%$ for all skydip measurements. The error is significantly smaller than the initial model that directly uses the PWV from the ALMA radiometer data (Supplementary Fig. 1a). This calibration model is used for all astronomical measurements reported in this Letter.

Beam efficiency. We used Mars with an apparent diameter of $3.99''$ and a brightness temperature $T_{\text{brightness}} = 210 \text{ K}$ (ref. ³¹) to measure the beam pattern and efficiency of the DESHIMA optics coupled with the ASTE 10 m telescope. The data were obtained at 12:48 UTC, 2017 November 15 (daytime in Chile) with a PWV of 1.8 mm. The intensity was calibrated to antenna temperature T_a^* using a standard chopper wheel method³². The flux scaling, noise removal and map making were performed using data analysis software De:code (DESHIMA Code for data analysis)³³. The main beam size is measured by fitting a 2D Gaussian to the 350 GHz continuum image on Mars (Supplementary Fig. 2). The source-deconvolved beam size is estimated to be $31.4'' \pm 2.8''$ by $22.8'' \pm 3.1''$ (in FWHM) with a position angle of 145.4° . We estimate the main-beam efficiency by comparing the peak intensity with what is expected from the model and find $\eta_{\text{MB}} = 0.34 \pm 0.03$ at 350 GHz (see Supplementary Note 1 for details). The main-beam solid angle Ω_{MB} and the main-beam efficiency yield an aperture efficiency of $\eta_A = (\lambda^2/A_p) \times (\eta_{\text{MB}}/\Omega_{\text{MB}}) = 0.17$, where A_p is the physical area of the ASTE primary mirror and λ is the wavelength. This value is much lower than previous 350 GHz measurements with a heterodyne receiver on ASTE ($\eta_{\text{MB}} \sim 0.6$)²⁶, and can be attributed to an offset of the instrument beam of DESHIMA. In a post-analysis, we took the beam pattern from the cryostat, measured its phase and amplitude⁵, and propagated it using Zemax³⁴ to estimate the illumination pattern on the surface of the ASTE mirrors. Supplementary Fig. 2c shows the resulting far-field beam pattern, which explains both the oval beam shape and the aperture efficiency of 0.17. Considering the accuracy in responsivity calibration ($\sim 4\%$), chopper wheel calibration together with the uncertainty in η_{MB} (10–15%), and the accuracy of the planet model ($\sim 5\%$), the absolute flux accuracy is estimated to be 12–17%.

Position-switching observations. For the single-pointing observations of IRC+10216 and VV 114, we oscillated the pointing of the ASTE telescope between the source position and a position $60''$ away from the source position in the azimuth direction, with a 2 s duty cycle. We integrated the spectrum of the target source that is contained within a circle of $11''$ radius (on-source position), which corresponds to an approximate half-width at half-maximum of the ASTE beam. We regarded the data beyond $27''$ from the target as off-source positions. The data were continuously recorded during the scans with a sampling rate of 160 Hz (ref. ³⁵). Because the frequency of the telescope nodding is lower than the typical onset of $1/f$ noise of the detectors⁵ ($\sim 1 \text{ Hz}$, corresponding to an Allan variance time of $\sim 1 \text{ s}$), the time-stream data are calibrated at 10 Hz using a blackened absorber on the rotating chopper wheel placed in front of the receiver (Fig. 2a). We took the difference $T_{\text{sky}} - T_{\text{amb}}$ at on- and off-source positions and used the standard chopper wheel calibration method³² to correct for atmospheric absorption and to convert T_{sky} to antenna temperature T_a^* . Throughout this Letter, on-source integration time refers to the total time that DESHIMA was observing the on-source position, excluding overheads for calibration.

IRC+10216. The broadband spectra of the post-AGB star IRC+10216 were taken on 16–20 November 2017. The PWV measured by ALMA was typically 0.75 mm. The observed data were reduced using De:code³³. After the chopper wheel calibration as mentioned above, the strong continuum emission of the target was removed by subtracting the median baseline, which was estimated in the frequency range of $<340 \text{ GHz}$ and $>360 \text{ GHz}$.

The obtained broadband spectrum is shown in Fig. 4a. The noise level of each spectral channel is determined by applying an iterative integration method with random sign inversion (the jackknife method hereafter; see Supplementary Note 2 for details). Two peaks are found at $\sim 345 \text{ GHz}$ and $\sim 354 \text{ GHz}$, corresponding to CO(3–2) and HCN(4–3) lines. The peak intensities are 94.7 mK and 79.0 mK in T_a^* . The integrated intensities of the CO and HCN lines are estimated by integrating over $340\text{--}350 \text{ GHz}$ and $353\text{--}358 \text{ GHz}$ to be 247 mK km s^{-1} and 104 mK km s^{-1} , respectively. The spectral shape agrees with that expected from a spectral survey observation with the Submillimeter Array³⁶. The integrated intensities of the CO and HCN lines are measured to be 58% and 31% of those measured by a previous observation using the Caltech Submillimeter Observatory (CSO) 10 m submillimeter telescope, after correcting for the spectral resolution, the beam size of DESHIMA on ASTE measured on Mars and the main-beam efficiency of $\eta_{\text{MB}} = 0.34$. These intensity ratios indicate that the main-beam efficiency of DESHIMA/ASTE should be $\eta_{\text{MB}} \sim 0.20\text{--}0.38$, which is consistent with our measurement using Mars and the Zemax simulation as explained in the section ‘Beam efficiency’.

A plot of the SNR of the CO and HCN lines as a function of the on-source integration time is presented in Fig. 4b. The SNR was calculated by dividing the signal by the noise level of that single spectral channel (corresponding to the vertical error bars in the spectrum as shown in Fig. 4a, but for different integration times). To calculate the NEFD in Fig. 4c, we adopted the HCN line over the CO line, because the HCN line is more concentrated near the target^{37,38}. The noise level of the HCN channel is estimated to be 1.2 mK after an on-source integration time of 12.6 min, corresponding to a NEFD of $3.2 \text{ Jy s}^{0.5} \text{ beam}^{-1}$.

VV 114. The interacting galaxy pair VV 114 was observed on 16 and 21 November 2017. The typical PWVs measured by ALMA were 0.7 mm on 16 November and 0.9 mm on 21 November. The scan pattern and data reduction method were the

same as for IRC+10216; the continuum emission was removed by subtracting a median baseline of the spectrum, estimated in the frequency range of $<335 \text{ GHz}$ and $>345 \text{ GHz}$.

The broadband spectrum of VV 114 is shown in Fig. 1b. A significant emission line is detected at 339 GHz, corresponding to the redshifted CO(3–2) spectrum²². The peak intensity of the CO line is 8.9 mK in T_a^* and the integrated intensity is estimated by integrating over $337.9\text{--}341.5 \text{ GHz}$ to be 12.4 K km s^{-1} . Adopting the beam size of DESHIMA on ASTE measured on Mars and the main-beam efficiency of $\eta_{\text{MB}} = 0.34$, the total flux density of the CO(3–2) emission is estimated to be $2.44 \times 10^3 \text{ Jy km s}^{-1}$. Regarding the difference in the integrated regions on sky, the estimated flux density is in reasonable agreement with the previous estimate with the James Clerk Maxwell Telescope (JCMT) ($2,956 \pm 133 \text{ Jy km s}^{-1}$)²². No other line feature is found except for tentative detections near 332 GHz and 343 GHz. The frequencies of these features are consistent with the redshifted frequencies of methanol in transitions of 7(1,6)–6(1,5)E and 4(0,4)–3(–1,3)E, respectively (E denotes the torsional symmetry state of methanol). The noise level of the spectrum is typically 1.0 mK in T_a^* with an integration time of 12.6 min, which is equivalent to a NEFD of $2.5 \text{ Jy s}^{0.5} \text{ beam}^{-1}$. The deep integration and the simple shape of the spectrum allow us to estimate the NEFD at each channel with the jackknife method as shown in Fig. 1b. We find that the NEFDs of all channels, except for some higher frequencies, achieve a good agreement with those of the theoretical prediction (Fig. 4c).

On-the-fly mapping observations. On-the-fly mapping observations towards the Orion KL region and NGC 253 (Fig. 3) were performed with spatial raster scans, in which the DESHIMA/ASTE beam ran linearly across the area of interest at a constant speed. The data taken at each side of the scans were used to subtract the foreground sky emission. Absolute flux calibration was performed with the standard chopper wheel method³² at the beginning of each mapping observation. The signal spectra and the noise on each channel map were obtained by aperture photometry on the map, adopting an aperture diameter of $43''$.

Orion. DESHIMA observations towards the massive star-forming region around Orion KL were executed on 8–12 November 2017. The area presented in Fig. 3b–d was divided into six sub-regions, which each have a size of $29''$ by $4''$. After 28 separate observations of these sub-regions in a total on-source time of 12.5 h, the data were combined to produce the final map of $29''$ by $22''$. After the basic data reduction process described above, we modelled the common signal across all channels as a superposition of continuum emission from the source and sky foreground emission, and removed the sky contribution based on an interchannel correlation analysis. We applied a moderate high-pass filter in the image domain in the scanning direction to remove part of the instrument and atmospheric $1/f$ noise, because we did not continuously rotate the chopper during this observation. Finally, we convolved the map with a $43''$ -diameter aperture to obtain the maps of CO, HCN and HCO⁺ presented in Fig. 3b–d. The spectrum at the point of Orion KL is displayed in Fig. 3e.

NGC 253. The OTF spectral map of the nearby barred spiral galaxy NGC 253, presented in Fig. 3f,g, was taken on 6–7 November 2017. The map size is $4.2'$ by $4.2'$. The total on-source time was 1.7 h. The data were reduced in the same manner as the Orion KL data, except that we used the median value of all channels to subtract the foreground sky emission. No continuum emission was detected from NGC 253, in an analysis similar to that for Orion. The obtained 1σ noise is typically $\sim 5.3 \text{ mK}$ from 335 GHz to 365 GHz. The map of the 345.53 GHz channel shows a 12.8σ detection of CO(3–2) emission from NGC 253, as shown in Fig. 3f where the DESHIMA CO(3–2) map is overlaid on a 2MASS *JHK* RGB image³⁹. The spectrum at this point, for a $43''$ aperture, is shown in Fig. 3g. The total integrated intensity of the CO(3–2) emission at the peak position for a $26.7''$ aperture is estimated to be 138 K km s^{-1} . This value is consistent with the previous measurement using a heterodyne receiver installed on the CSO 10 m telescope⁴⁰, taking into account the difference in beam size and the accuracy of the absolute flux calibration. The total integrated intensity of the CO(3–2) spectrum taken with CSO is estimated to be $815.6 \pm 163.1 \text{ K km s}^{-1}$ (ref. ⁴⁰). Since the beam size of CSO is $21.9''$, which is smaller than the DESHIMA beam, it should be corrected for comparison. If we assume that the emission is uniformly distributed over the DESHIMA beam, the total integrated intensity is corrected to be 205 K km s^{-1} for a $21.9''$ aperture. Adopting a main-beam efficiency of 0.34, the total integrated intensity is thus 643 K km s^{-1} . This is slightly lower than the CSO value but within the margin of the uncertainty in absolute flux calibration and the distribution of source emission.

Sensitivity. The power coupled to the MKID is the sum of the power from the sky and the power from warm spillover. This is given by

$$P_{\text{MKID}} = \{\eta_{\text{fwd}}(1 - \eta_{\text{atm}}) + (1 - \eta_{\text{fwd}})\}\eta_{\text{inst}}B(F, T_{\text{amb}})\Delta F \quad (2)$$

where $\eta_{\text{fwd}} = 0.93$ is the forward efficiency of the telescope, that is, all power coupled to the sky, η_{inst} is the coupling from the cryostat window to the MKID detector and η_{atm} is the atmosphere transmission given by the PWV and elevation. In Fig. 4c, we

have adopted $\eta_{\text{inst}} = 0.02$ for the model bars based on the laboratory test⁶. $B(F, T_{\text{amb}})$ is the single-polarization Planck brightness at frequency F and temperature T_{amb} , taken as identical for the ground, cabin and atmosphere. The photon-noise-limited NEP (NEP_{ph}), at the detector, is given by⁶

$$\text{NEP}_{\text{ph}} = \sqrt{2P_{\text{MKID}}(hF + P_{\text{MKID}}/\Delta F) + 4\Delta_{\text{Al}}P_{\text{MKID}}/\eta_{\text{pb}}} \quad (3)$$

Here, h is the Planck constant, ΔF is the effective bandwidth of the filter channel, $\Delta_{\text{Al}} = 188 \mu\text{eV}$ is the superconducting gap energy of aluminium and $\eta_{\text{pb}} \sim 0.4$ is the pair-breaking efficiency⁴¹. The foreground photon-noise-limited NEFD (NEFD_{ph}), evaluated on-sky, has to take into account the instrument coupling, aperture efficiency η_{A} and the physical area of the ASTE telescope A_{p} and is given by

$$\text{NEFD}_{\text{ph}} = \frac{\text{NEP}_{\text{ph}}}{\sqrt{2}\eta_{\text{pol}}\eta_{\text{inst}}\eta_{\text{fwd}}\eta_{\text{atm}}\eta_{\text{A}}A_{\text{p}}\Delta F} \quad (4)$$

Here, the factor $\sqrt{2}$ accounts for the NEP being defined for 0.5 s integration time, and $\eta_{\text{pol}} = 0.5$ accounts for the fact that DESHIMA is sensitive to a single linear polarization.

Optimum frequency resolution. Here we will show that the SNR for a single ISS channel matched to the centre frequency of an astronomical line is maximum when the channel frequency width ΔF_{ch} is equal to the line width ΔF_{line} , under the assumption that the measurement is limited by the foreground/background photon noise. In the following analysis we adopt a frequency width ratio $r \equiv \Delta F_{\text{ch}}/\Delta F_{\text{line}}$, and assume a rectangular frequency profile for both the line and the channel transmission for simplicity.

The SNR for $r = 1$ after an integration time of t is

$$\text{SNR} = \frac{P_{\text{line}}\sqrt{2t}}{\text{NEP}_{\text{ph}}} \quad (5)$$

Here, P_{line} is the total power from the line absorbed by the MKID and NEP_{ph} is given by equation (3).

If $r > 1$, then P_{line} stays constant, but the NEP increases with \sqrt{r} according to equation (3), because $P_{\text{MKID}} \propto r$ and $\Delta F \propto r$. In other words, the MKID receives more sky loading but the signal power from the line stays constant. Therefore the SNR drops.

If $r < 1$, then P_{line} decreases in proportion to r because the channel receives only part of the spectral power of the line. At the same time the NEP decreases but with \sqrt{r} , so the net change in SNR is a decrease proportional to \sqrt{r} .

From these two arguments we can conclude that the SNR for a single channel is maximized for $r = 1$.

Now, the sensitivity loss for the $r < 1$ case can be recovered if one places $1/r$ channels per line, but this would naturally require more detectors to cover a given instantaneous bandwidth. For DESHIMA we have taken a typical velocity width of $\Delta V \sim 600 \text{ km s}^{-1}$ for bright SMGs⁴² to set the frequency resolution to $F/\Delta F = c/\Delta V \sim 500$. If the typical linewidth of the target population is known a priori, then the spectral resolution of the ISS can be optimized according to the intended applications.

Data availability

The datasets generated and analysed during this study are available from the corresponding author on reasonable request.

Code availability

The De:code software is distributed under the MIT license at <https://github.com/deshima-dev/decode>.

Received: 23 January 2019; Accepted: 20 June 2019;

Published online: 05 August 2019

References

- Geach, J. E. et al. The case for a 'sub-millimeter SDSS': a 3D map of galaxy evolution to $z \sim 10$. Preprint at <https://arxiv.org/abs/1903.04779> (2019).
- Farrah, D. et al. Review: far-infrared instrumentation and technology development for the next decade. *J. Astron. Telesc. Instrum. Syst.* **5**, 020901 (2019).
- Kawabe, R. et al. New 50-m-class single-dish telescope: Large Submillimeter Telescope (LST). *Proc. SPIE* **9906**, 990626 (2016).
- Erickson, N., Narayanan, G., Goeller, R. & Grosslein, R. in *From Z-Machines to ALMA: (Sub)Millimeter Spectroscopy of Galaxies*, Astronomical Society of the Pacific Conference Series **375**, (eds Baker, A. J. et al.) 71–81 (Astronomical Society of the Pacific, 2007).
- Stacey, G. J. THz low resolution spectroscopy for astronomy. *IEEE Trans. Terahertz Sci. Technol.* **1**, 241–255 (2011).
- Endo, A. et al. Wideband on-chip terahertz spectrometer based on a superconducting filterbank. *J. Astron. Telesc. Instrum. Syst.* **5**, 035004 (2019).
- Day, P. K., LeDuc, H. G., Mazin, B. A., Vayonakis, A. & Zmuidzinas, J. A broadband superconducting detector suitable for use in large arrays. *Nature* **425**, 817–821 (2003).
- Daz-Santos, T. et al. The multiple merger assembly of a hyperluminous obscured quasar at redshift 4.6. *Science* **362**, 1034–1036 (2018).
- Casey, C. M., Narayanan, D. & Cooray, A. Dusty star-forming galaxies at high redshift. *Phys. Rep.* **541**, 45–161 (2014).
- Groppi, C. et al. Test and integration results from SuperCam: a 64-pixel array receiver for the 350 GHz atmospheric window. *Proc. SPIE* **7741**, 77410X (2010).
- Endo, A. et al. Design of an integrated filterbank for DESHIMA: on-chip submillimeter imaging spectrograph based on superconducting resonators. *J. Low Temp. Phys.* **167**, 341–346 (2012).
- Shirokoff, E. et al. MKID development for SuperSpec: an on-chip, mm-wave, filter-bank spectrometer. *Proc. SPIE* **8452**, 84520R (2012).
- Cataldo, G. et al. Second-generation design of Micro-Spec: a medium-resolution, submillimeter-wavelength spectrometer-on-a-chip. *J. Low Temp. Phys.* **193**, 923–930 (2018).
- Sibthorpe, B. & Jellema, W. Relative performance of dispersive and non-dispersive far-infrared spectrometer instrument architectures. *Proc. SPIE* **9153**, 91531W (2014).
- Bueno, J. et al. Full characterisation of a background limited antenna coupled KID over an octave of bandwidth for THz radiation. *Appl. Phys. Lett.* **110**, 233503 (2017).
- O'Brien, R. et al. A dual-polarized broadband planar antenna and channelizing filter bank for millimeter wavelengths. *Appl. Phys. Lett.* **102**, 063506 (2013).
- Battersby, C. et al. The Origins Space Telescope. *Nat. Astron.* **2**, 596–599 (2018).
- de Visser, P. J., Baselmans, J. J. A., Bueno, J., Llobart, N. & Klapwijk, T. M. Fluctuations in the electron system of a superconductor exposed to a photon flux. *Nat. Commun.* **5**, 3130 (2014).
- Endo, A. et al. On-chip filter bank spectroscopy at 600–700 GHz using NbTiN superconducting resonators. *Appl. Phys. Lett.* **103**, 032601 (2013).
- Wheeler, J. et al. SuperSpec: development towards a full-scale filter bank. *Proc. SPIE* **9914**, 99143K (2016).
- Ezawa, H., Kawabe, R., Kohno, K. & Yamamoto, S. The Atacama Submillimeter Telescope Experiment (ASTE). *Proc. SPIE* **5489**, 763–772 (2004).
- Wilson, C. D. et al. Luminous infrared galaxies with the submillimeter array. I. Survey overview and the central gas to dust ratio. *Astrophys. J. Suppl. Ser.* **178**, 189–224 (2008).
- Coudé, S. et al. The JCMT Gould Belt Survey: the effect of molecular contamination in SCUBA-2 observations of Orion A. *Mon. Not. R. Astron. Soc.* **457**, 2139–2150 (2016).
- Dumke, M., Nieten, C., Thuma, G., Wielebinski, R. & Walsh, W. Warm gas in central regions of nearby galaxies. extended mapping of CO(3-2) emission. *Astron. Astrophys.* **373**, 853–880 (2001).
- Yurduseven, O. et al. Incoherent detection of orthogonal polarizations via an antenna coupled MKID: experimental validation at 1.55 THz. *IEEE Trans. Terahertz Sci. Technol.* **8**, 736–745 (2018).
- Ito, T. et al. The new heterodyne receiver system for the ASTE radio telescope: three-cartridge cryostat with two cartridge-type superconducting receivers. *Proc. SPIE* **10708**, 107082V (2018).
- Wisotzki, L. et al. Nearly all the sky is covered by Lyman- α emission around high-redshift galaxies. *Nature* **562**, 229–232 (2018).
- Parshley, S. C. et al. CCAT-prime: a novel telescope for sub-millimeter astronomy. *Proc. SPIE* **10700**, 107005X (2018).
- Nikolic, B., Bolton, R. C., Graves, S. F., Hills, R. E. & Richer, J. S. Phase correction for ALMA with 183 GHz water vapour radiometers. *Astron. Astrophys.* **552**, A104 (2013).
- Pardo, J. R., Cernicharo, J. & Serabyn, E. Atmospheric transmission at microwaves (ATM): an improved model for millimeter/submillimeter applications. *IEEE Trans. Antennas Propag.* **49**, 1683–1694 (2001).
- Butler, B. Flux density models for solar system bodies in CASA. *ALMA Memo* **594** (2012).
- Wilson, T. L., Rohlfs, K. & Hüttemeister, S. *Tools of Radio Astronomy* (Springer, 2009).
- DESHIMA Code for data analysis, De:code; <https://github.com/deshima-dev/decode>
- Zemax LLC, Zemax; <https://www.zemax.com>
- van Rantwijk, J., Grim, M., van Loon, D. & Yates, S. J. C. Multiplexed readout for 1000-pixel arrays of microwave kinetic inductance detectors. *IEEE Trans. Microw. Theory Techn.* **64**, 1876–1883 (2016).
- Patel, N. A. et al. An interferometric spectral-line survey of IRC + 10216 in the 345 GHz band. *Astrophys. J. Suppl. Ser.* **193**, 17–72 (2011).
- Williams, P. G. & White, G. J. Sub-millimetre molecular lines in the circumstellar envelope IRC + 10216. *Astron. Astrophys.* **266**, 365–376 (1992).
- Wang, Y., Jaffe, D. T., Graf, U. U. & Evans, N. J. II Single-sideband calibration for CO, ¹³CO, HCN, and CS lines near 345 GHz. *Astrophys. J. Suppl. Ser.* **95**, 503–515 (1994).

39. Skrutskie, M. F. et al. The Two Micron All Sky Survey (2MASS). *Astrophys. J.* **131**, 1163–1183 (2006).
40. Bayet, E., Gerin, M., Phillips, T. G. & Contursi, A. The submillimeter C and CO lines in Henize 2-10 and NGC 253. *Astron. Astrophys.* **427**, 45–59 (2004).
41. Guruswamy, T., Goldie, D. J. & Withington, S. Quasiparticle generation efficiency in superconducting thin films. *Supercond. Sci. Technol.* **27**, 055012 (2014).
42. Carilli, C. L. & Walter, F. Cool gas in high-redshift galaxies. *Annu. Rev. Astron. Astrophys.* **51**, 105–161 (2013).
43. Mahieu, S. et al. The alma band-7 cartridge. *IEEE Trans. Terahertz Sci. Technol.* **2**, 29–39 (2012).

Acknowledgements

We thank T. Kobiki, T. Ito, M. Yamada, M. Saito, J. Aguilera and J. Zenteno of NAOJ for their support at ASTE. We thank R. Jara, L. T. Galv ez and M. Konuma of NAOJ for their support in the transportation of the equipment to ASTE. We thank T. Minamidani for hosting a go/no-go review of the campaign, and all committee members who provided invaluable feedback. We thank K. Keizer of SRON for the precise mechanical work on the cryostat. We thank P. P. Kooyman and H. Hoevers of SRON for coordinating the delivery of the cryogenic hardware. We thank the staff of The University of Tokyo Atacama Observatory facility for their hospitality. We thank the staff of Kavli Nanolab Delft for their support in the microfabrication of the ISS chip. We thank the staff of Else Kooi Laboratory for supporting the measurements in the cryolab at TU Delft. We thank D. Wernicke and J. Baumgartner of Entropy Cryogenics for their support in operating the cryostat at ASTE. Finally, we thank J. Pinto for his kindness to donate a piece of copper wire with a diameter in the range of 1.00–1.05 mm from his jewellery shop in San Pedro de Atacama so that we could align the cryogenic thermal mechanical structure on site. This research was supported by the Netherlands Organization for Scientific Research NWO (Vidi grant no. 639.042.423, NWO Medium Investment grant no. 614.061.611 DESHIMA), the European Research Council ERC (ERC-CoG-2014 - Proposal no. 648135 MOSAIC), the Japan Society for the Promotion of Science JSPS (KAKENHI grant nos. JP25247019 and JP17H06130), NAOJ ALMA Scientific Research grant no. 2018-09B, and the Grant for Joint Research Program of the Institute of Low Temperature Science, Hokkaido University. P.J.d.V. is supported by the NWO (Veni Grant 639.041.750). T.M.K. is supported by the ERC Advanced grant no. 339306 (METIQUUM) and the Russian Science Foundation (grant no. 17-72-30036). N.L. is supported by ERC (Starting Grant no. 639749). J.S. and M.N. are supported by the JSPS Program for Advancing Strategic International Networks to Accelerate the Circulation of Talented Researchers (Program no. R2804). T.J.L.C.B. was supported by the European Union Seventh Framework Programme (FP7/2007–2013, FP7/2007–2011) under grant agreement no. 607254. The ASTE telescope is operated by the National Astronomical Observatory of Japan (NAOJ).

Author contributions

A.E. initiated the DESHIMA project as an MKID-based redshift machine. J.J.A.B. invented the concept of the ISS. P.P.v.d.W., Y.T., K. Kohno and R.K. articulated further astronomical usage of ISS spectrometers. A.E. designed the ISS filterbank. O.Y. designed the double-slot antenna. A.P.L. explained the chip performance with precise

electromagnetic simulations. D.J.T. and V.M. fabricated the chip. D.J.T. and T.M.K. provided the NbTiN thin film. J.B. measured the optical efficiency of the chip. P.J.d.V. provided insight on the quasiparticle physics. S.J.C.Y. designed the cold optics, measured the instrument beam pattern, and did a post analysis to explain the beam pattern and efficiency measured on ASTE. J.J.A.B. and S.J.C.Y. made the conceptual design of the cryogenic set-up, and R.H. made the mechanical designs. J.J.A.B. developed the readout electronics. K. Karatsu measured the sensitivity and frequency response of the instrument. M.N. and J.S. contributed to these measurements. J.S. developed a database for managing the acquired data. S.B., O.Y. and N.L. designed the surface accuracy. T.O., T. Takekoshi, K.O. and Y.F. designed and tested the warm optics, the room-temperature calibration chopper and the DESHIMA–ASTE hardware interface. A.K. and K.F. manufactured the warm optics, and S.N. measured its surface accuracy. K. Karatsu, Y.T. and J.M. developed the DESHIMA local controller. D.J.T. and T.O. were responsible for the logistics in the transportation of the equipment to ASTE. T.O. led the installation of DESHIMA on ASTE, done by T.O., T. Takekoshi, K. Karatsu, D.J.T., R.H. and A.E. R.H. and K. Karatsu were responsible for the re-integration of the DESHIMA hardware on the ASTE site. K. Karatsu and T.O. realized remote control of DESHIMA on ASTE. T. Takekoshi aligned the warm optics using the scheme he developed. S. Ishii, A.T., Y.T., K. Karatsu, T. Takekoshi, T.U., T.I., K.C. and K.S. defined the data structure. A.T. and T.I. developed the De:code software. Y.T. led the astronomical observations and selected the target objects. Observations were conducted from the TAO facility in San Pedro de Atacama and from NAOJ by Y.T., K.S., T.I., A.T., T. Takekoshi, T.O., K. Karatsu, K.C., Y.Y., T.J.L.C.B., S. Ishii, T.U. and A.E. Y.T. developed the on-sky chopping scheme. T. Takekoshi led the dismantling of DESHIMA, done by T. Takekoshi, K. Karatsu, M.N., K.F. and A.E. The following authors autonomously analysed the on-telescope data and wrote the corresponding sections of this paper: K.S. (Mars), T. Takekoshi (sky dip calibration, in collaboration with J.S. and K. Karatsu), T. Tsukagoshi (VV 114, IRC+10216), S. Ikarashi (Orion, NGC 253). A.E. led the writing of the paper, and all authors have contributed to improving the quality. Project management: S.A. managed the ASTE telescope; J.J.A.B. managed the development of the instrument hardware; T.O. managed the development of the warm optics and chopper, as well as the scheme and hardware for installing DESHIMA on ASTE; Y.T. managed the astronomical commissioning and software development; A.E. managed the DESHIMA project on the top level.

Competing interests

The authors declare no competing interests.

Additional information

Supplementary information is available for this paper at <https://doi.org/10.1038/s41550-019-0850-8>.

Reprints and permissions information is available at www.nature.com/reprints.

Correspondence and requests for materials should be addressed to A.E.

Peer review information: *Nature Astronomy* thanks Ted Huang, Omid Noroozian and the other, anonymous, reviewer(s) for their contribution to the peer review of this work.

Publisher's note: Springer Nature remains neutral with regard to jurisdictional claims in published maps and institutional affiliations.

  The Author(s), under exclusive licence to Springer Nature Limited 2019