

Improving (Shared) Understanding with Hart:

Designing a telemonitoring smart care agent to support patient care in transcatheter aortic valve implantation perioperative journey

Hart, a smart digital care assistant, is a PSS for the adoption of Philips wearable biosensor data in TAVI perioperative patient care. Hart initiating communications on helping patients reflect on their own health situation, building shared knowledge by using patient-shared contextual information with long-term monitoring during physical activities or experience of symptoms.

Context

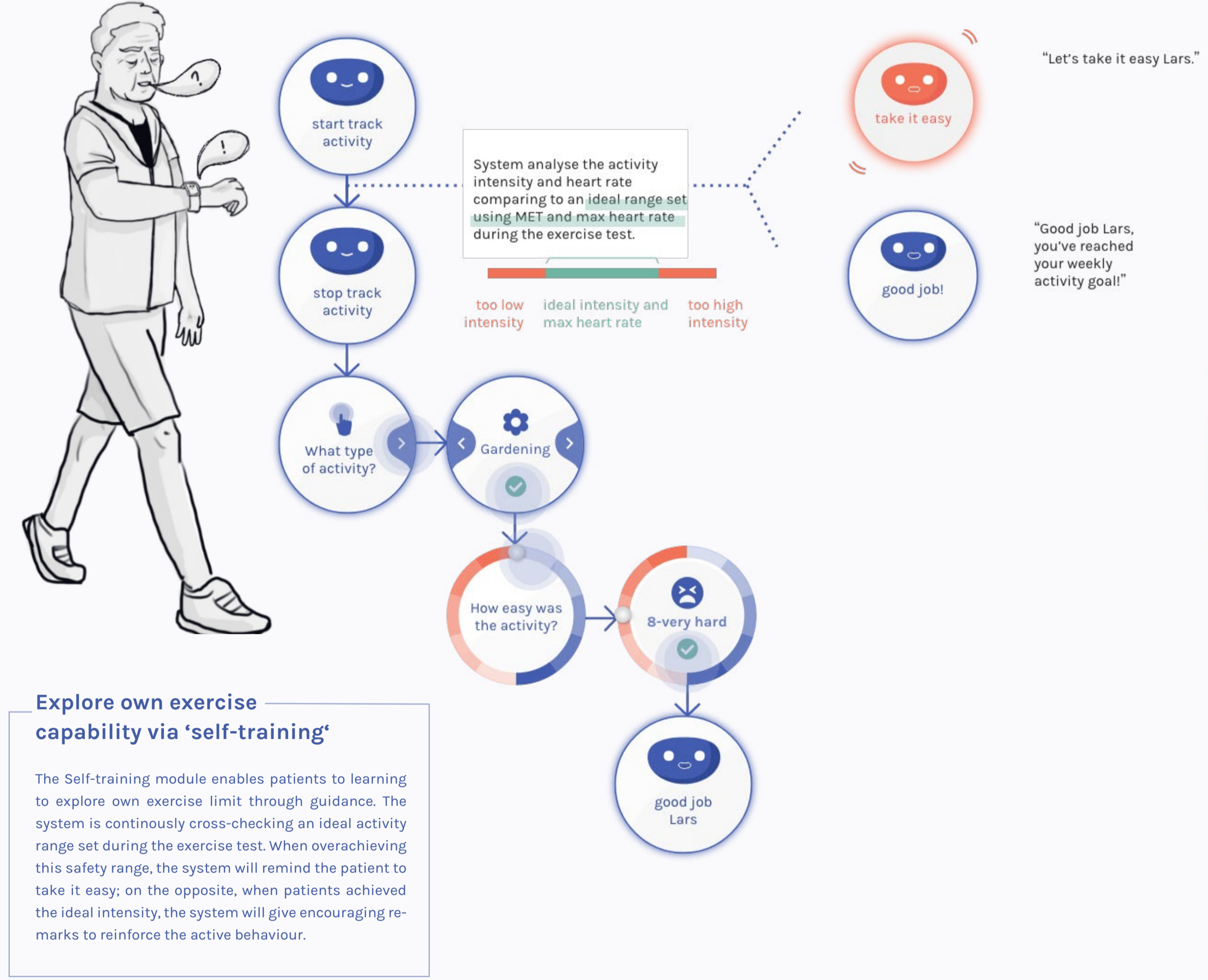
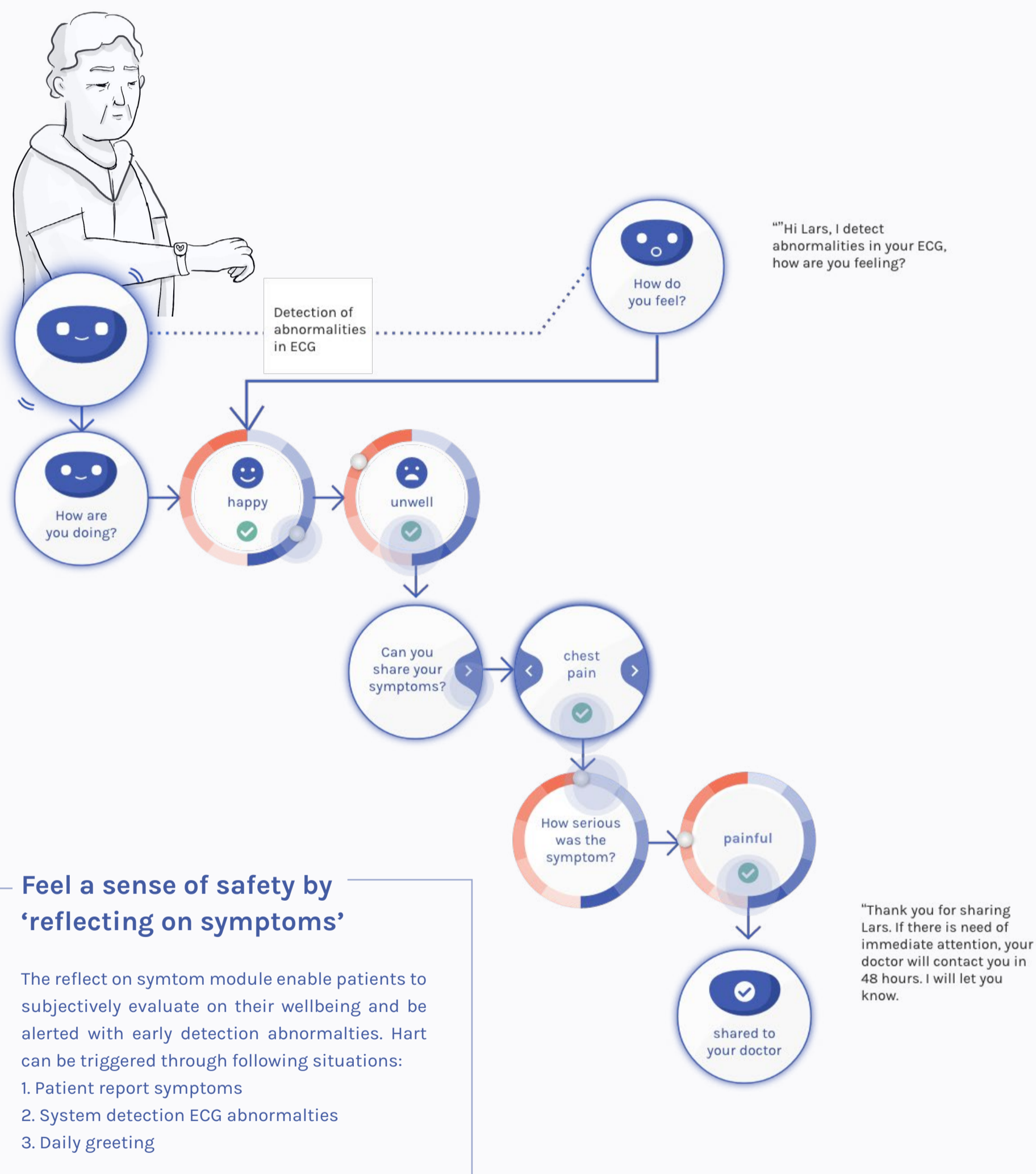
Aortic valve stenosis (AS) is one of the most common and progressive valvular heart diseases in ageing society. According to the European Society of Cardiology (2020), the burden of AS symptoms affects the patient's quality of life and survival. For intermediate or high-risk patients experiencing severe symptoms, they are often suggested TAVI treatment, is a minimally invasive valve replacement surgery. However, TAVI patients are also frailer and with comorbidities, which requires multidisciplinary teams to deliver perioperative patient care.

Problem definition

TAVI patients are also more frail and with comorbidities, which require multidisciplinary teams to deliver perioperative patient care. The problem is defined as when patients step out of hospital, there is a lack of communication in (1) knowing when and what actions to take if complications occur; (2) Knowing how active can and should the patient during home recovering.

Design goal

Improve shared understanding by designing a telemonitoring product-service-system that supports patients and care teams to assess and build a shared knowledge of health conditions out of hospital.



Graduate student: Winnie (Wei Ju) Chen
 Improving (Shared) Understanding with Hart:
 Designing a telemonitoring smart care agent to support patient care in transcatheter aortic valve implantation perioperative journey
 MSc Design for Interaction. Graduate on September 7th 2020

Supervisory team Prof. dr. Gerd Kortuem
 Prof. dr. Maaïke Kleinsmann
 Organisation Amsterdam UMC heart center, Philips Research