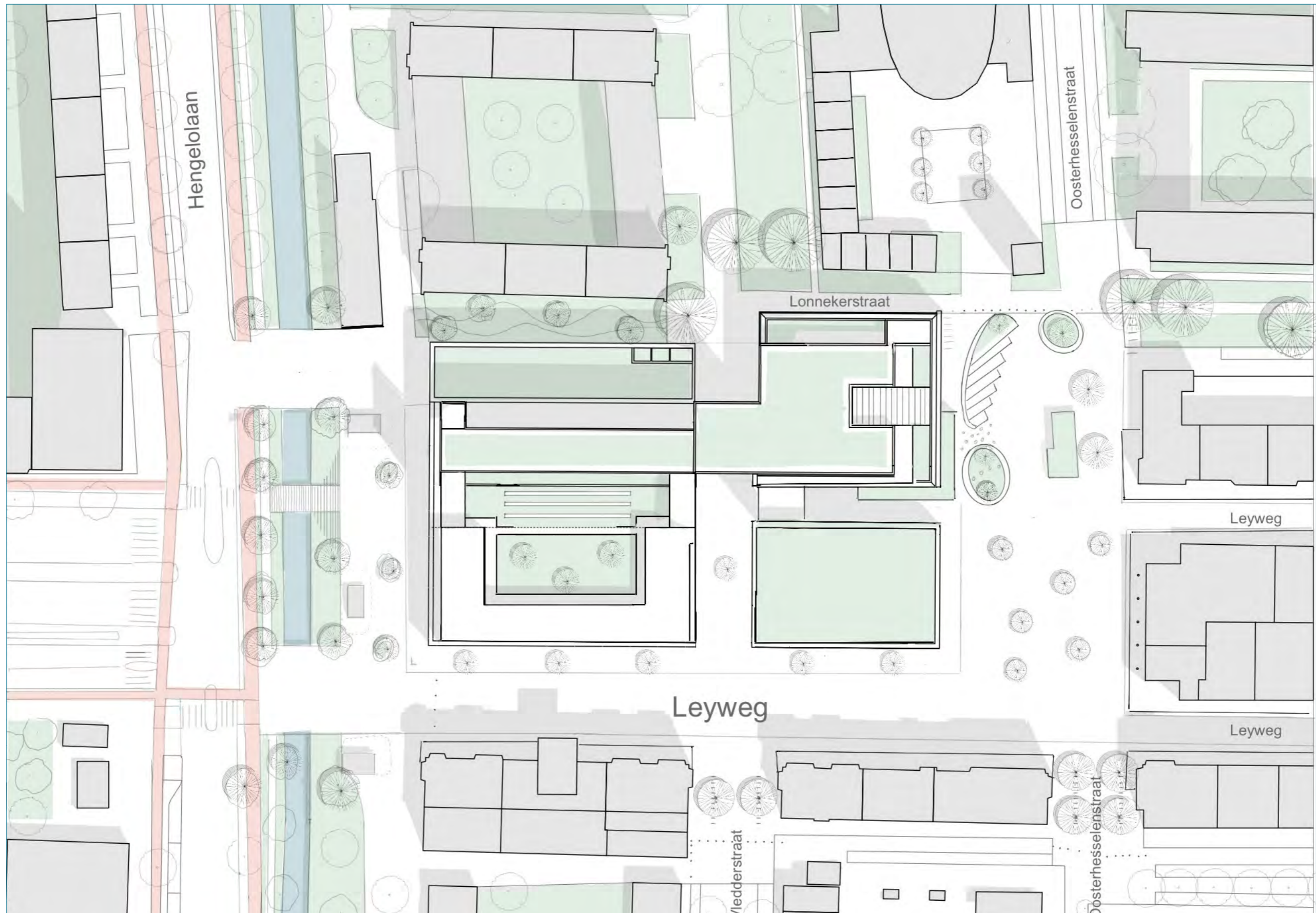
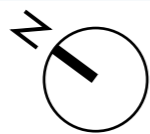


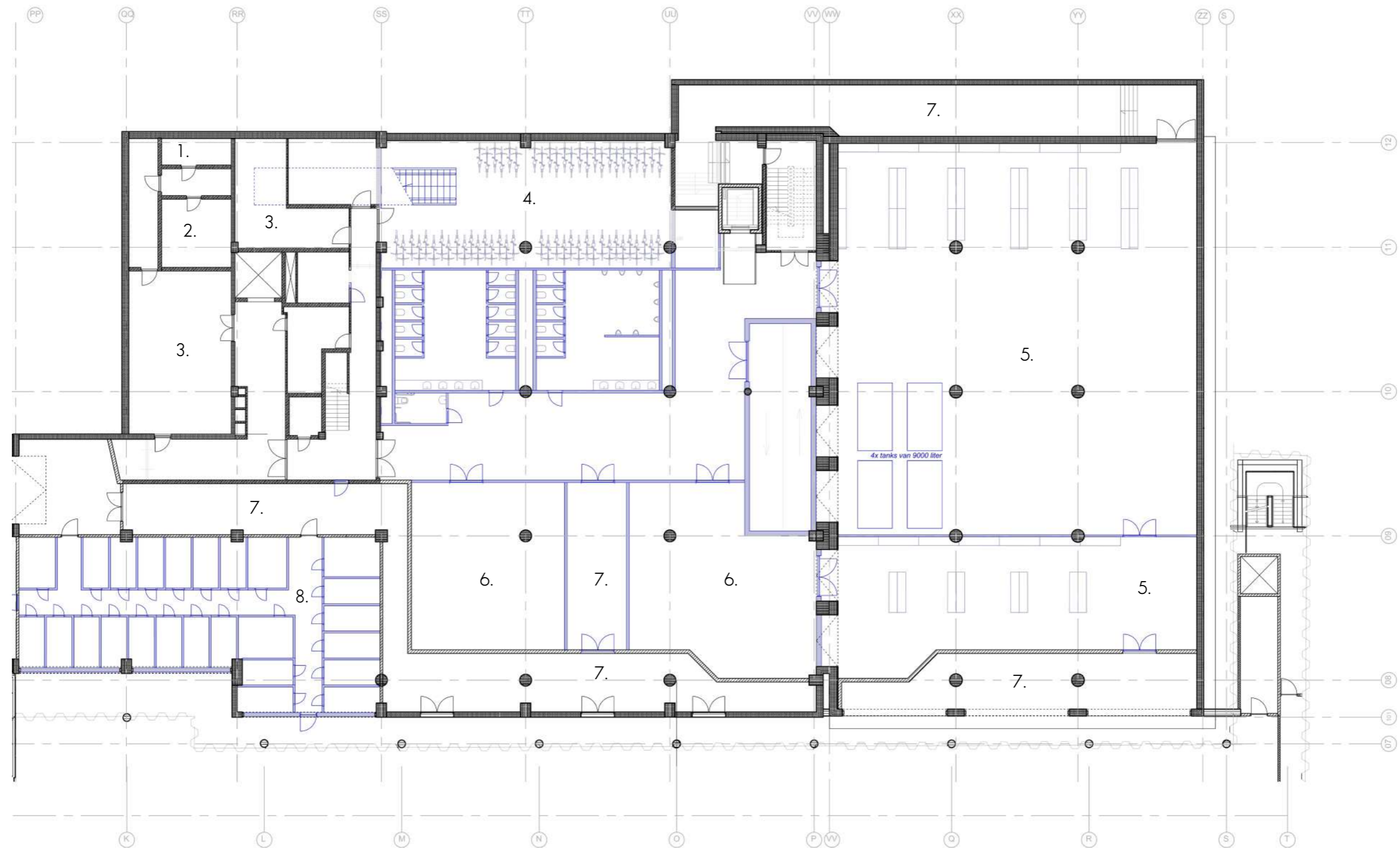
New site plan



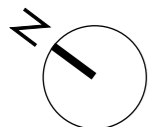
0 10 25 50 m



Basement

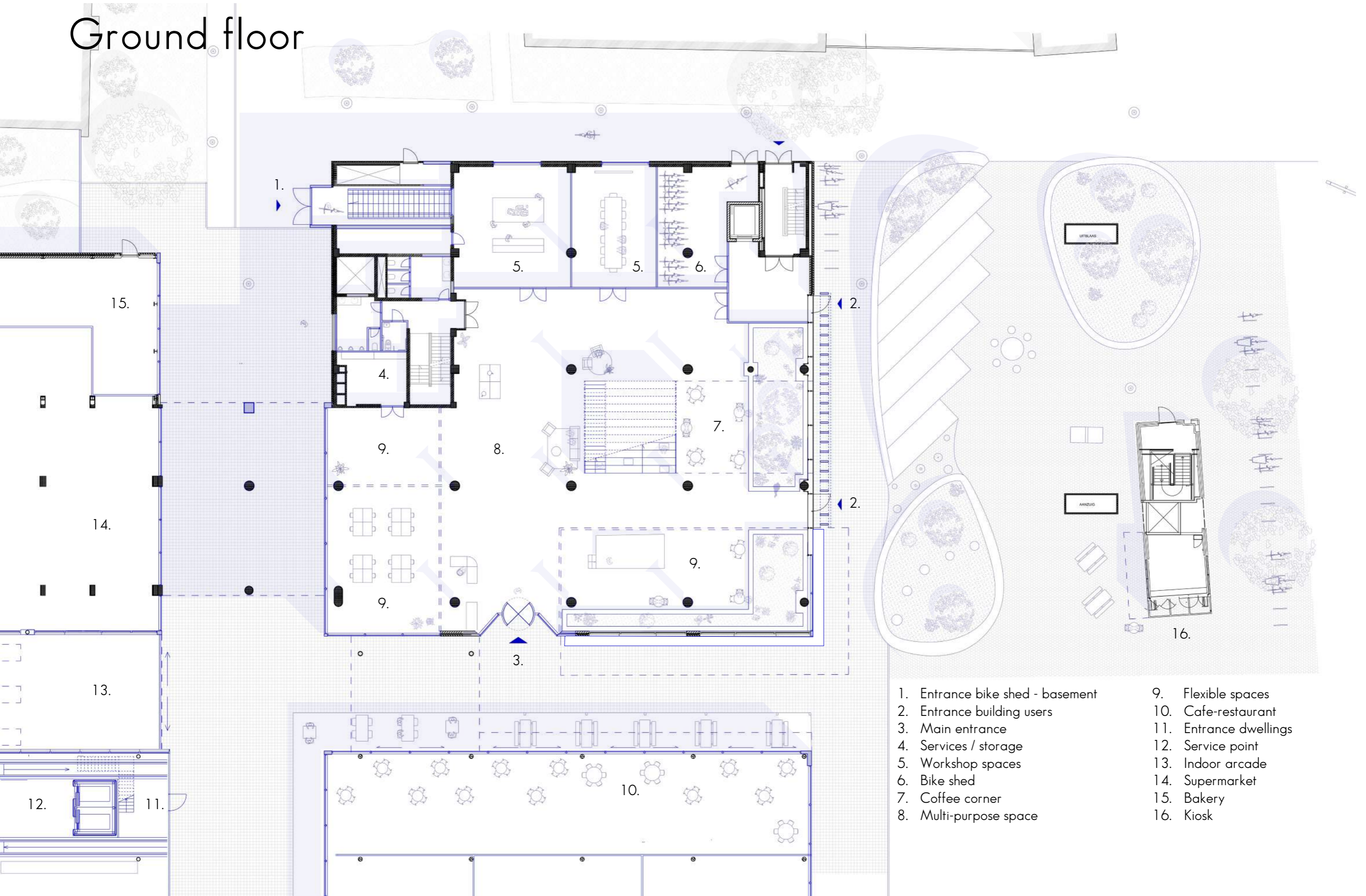


1. Services - electricity
2. Services - heat exchanger
3. Services - AHU
4. Large bike shed - 130 m²
5. Storages
6. Workshop rooms with loud noise levels/auditorium
7. Escape routes
8. Storage units for dwellings

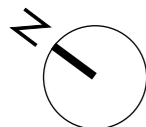


0 5 10 20 m

Ground floor

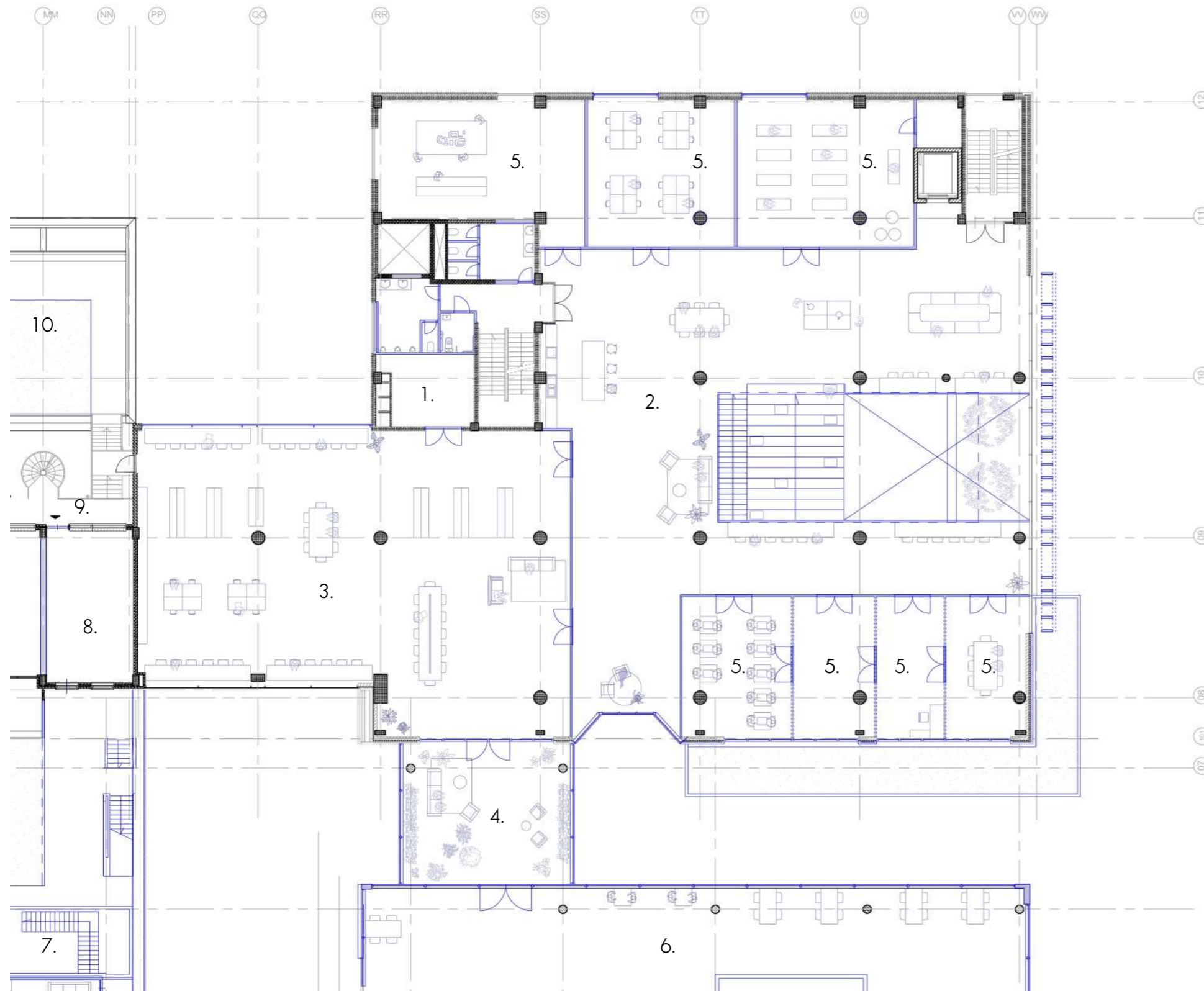


- | | |
|----------------------------------|------------------------|
| 1. Entrance bike shed - basement | 9. Flexible spaces |
| 2. Entrance building users | 10. Cafe-restaurant |
| 3. Main entrance | 11. Entrance dwellings |
| 4. Services / storage | 12. Service point |
| 5. Workshop spaces | 13. Indoor arcade |
| 6. Bike shed | 14. Supermarket |
| 7. Coffee corner | 15. Bakery |
| 8. Multi-purpose space | 16. Kiosk |

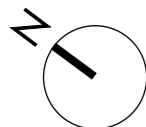


0 5 10 20 m

First floor



1. Services / storage
2. Multi-purpose space
3. Reading room
4. Wintergarden
5. (Flexible) workshop spaces
6. Co-working spaces
7. Stairwell dwellings
8. Shared laundry room
9. Escape route/Gallery dwellings
10. Green roof distribution centre

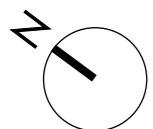


0 5 10 20 m

Second floor

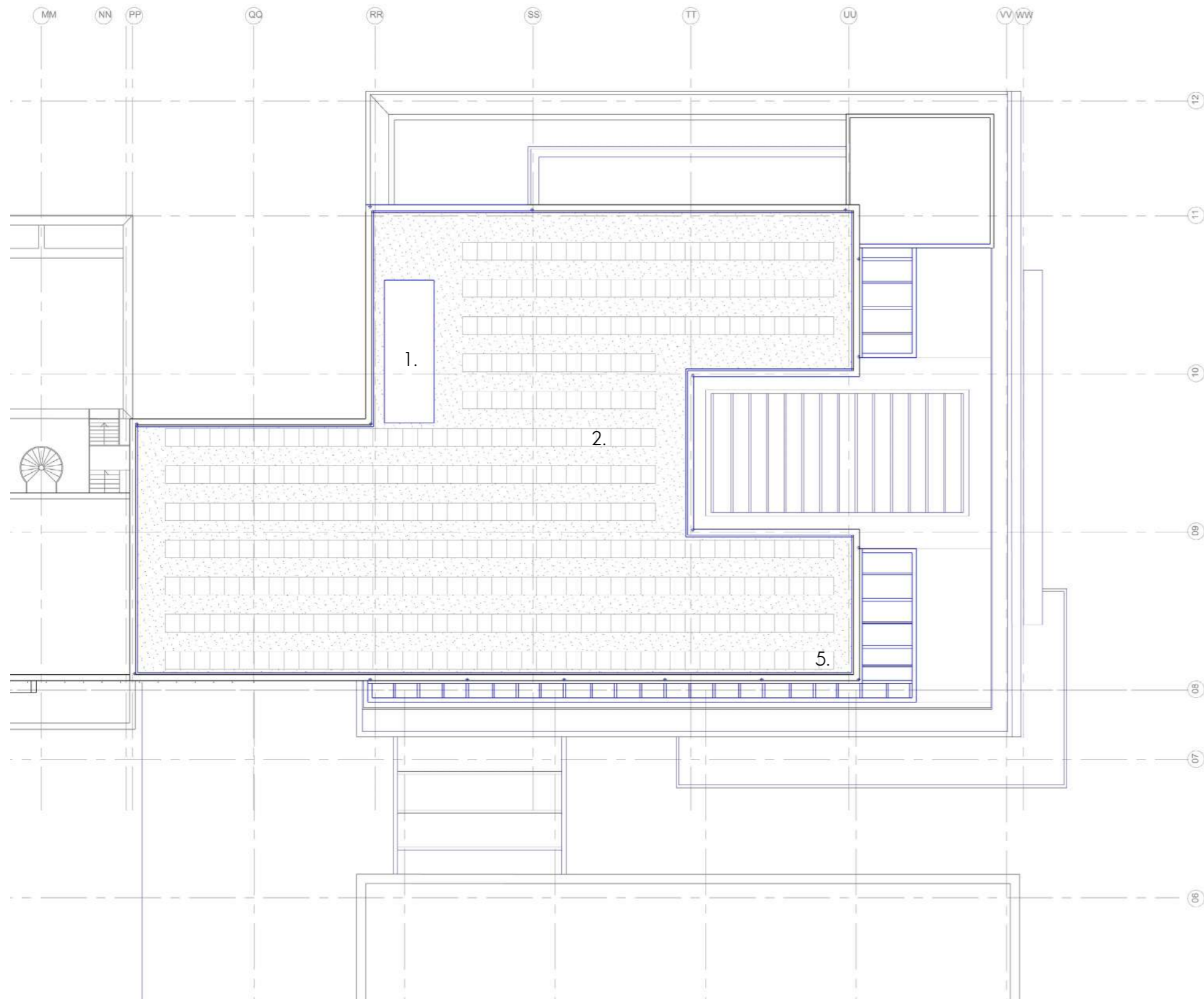


1. Services / storage
2. Conference rooms / larger office spaces
3. Small office units
4. Break room
5. Flexible wintergardens
6. Rooftop garden
7. Shared space dwellings
8. Gallery/escape route

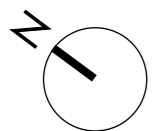


0 5 10 20 m

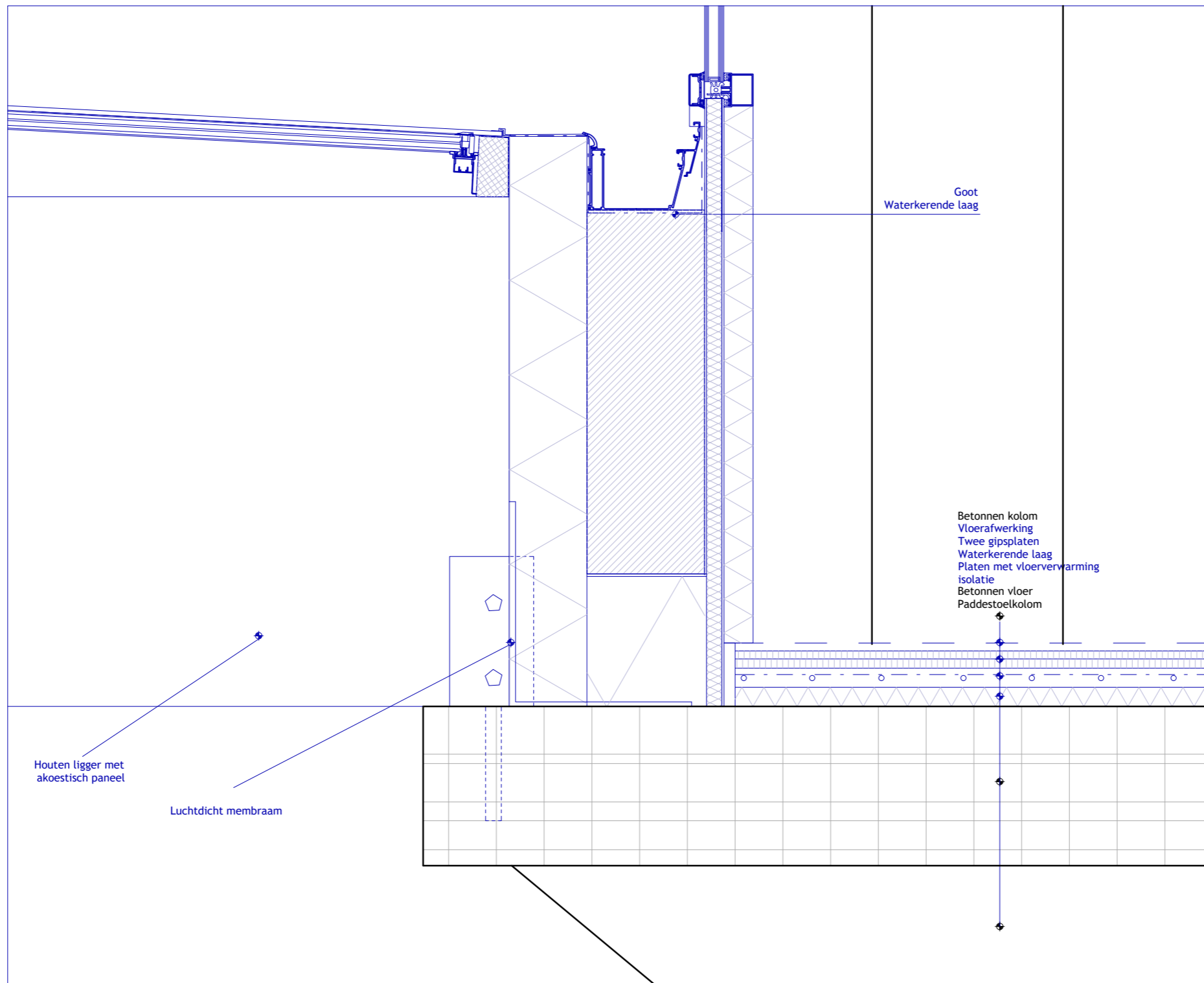
Roof plan

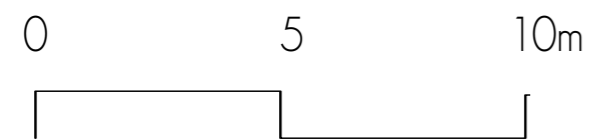
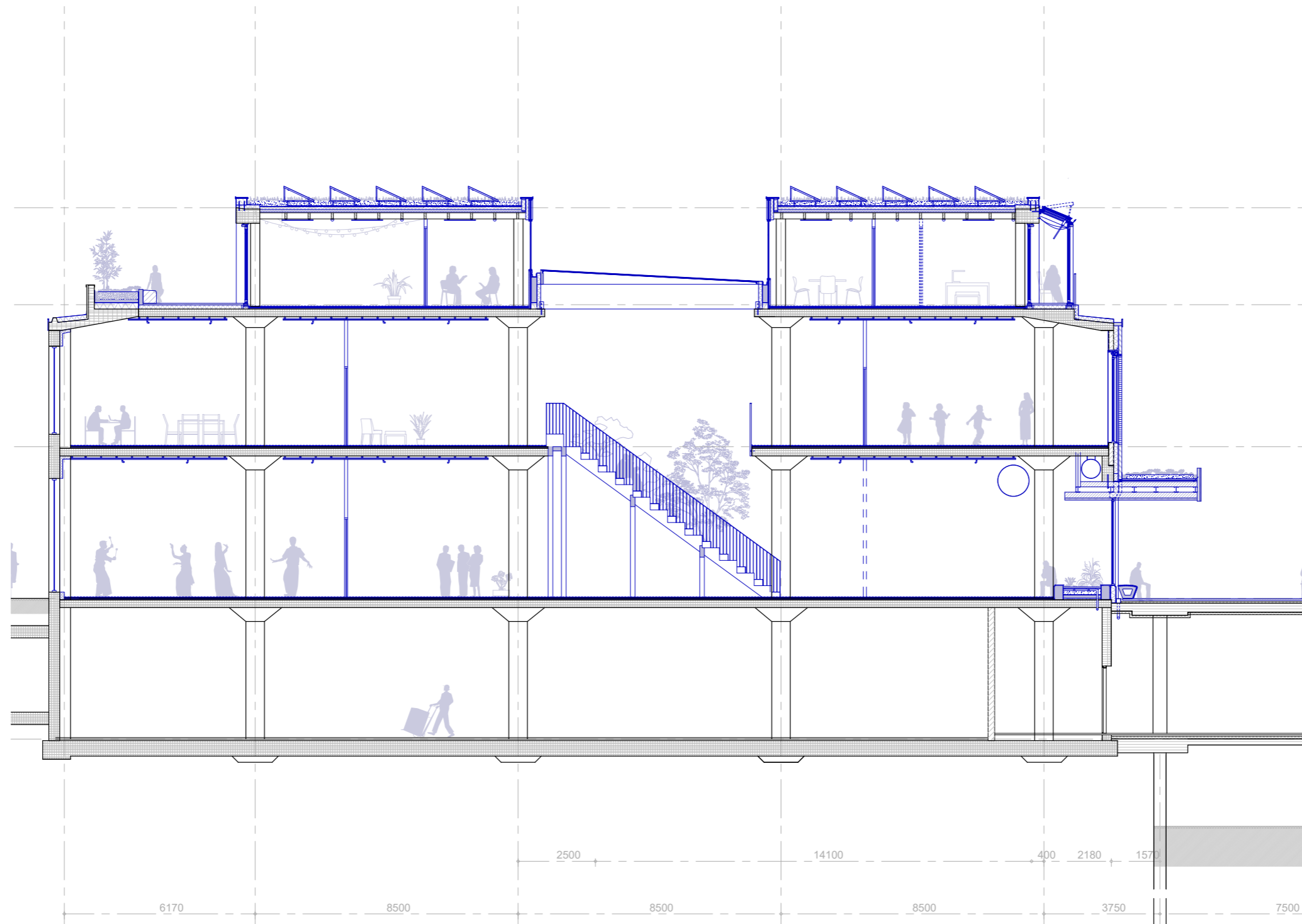


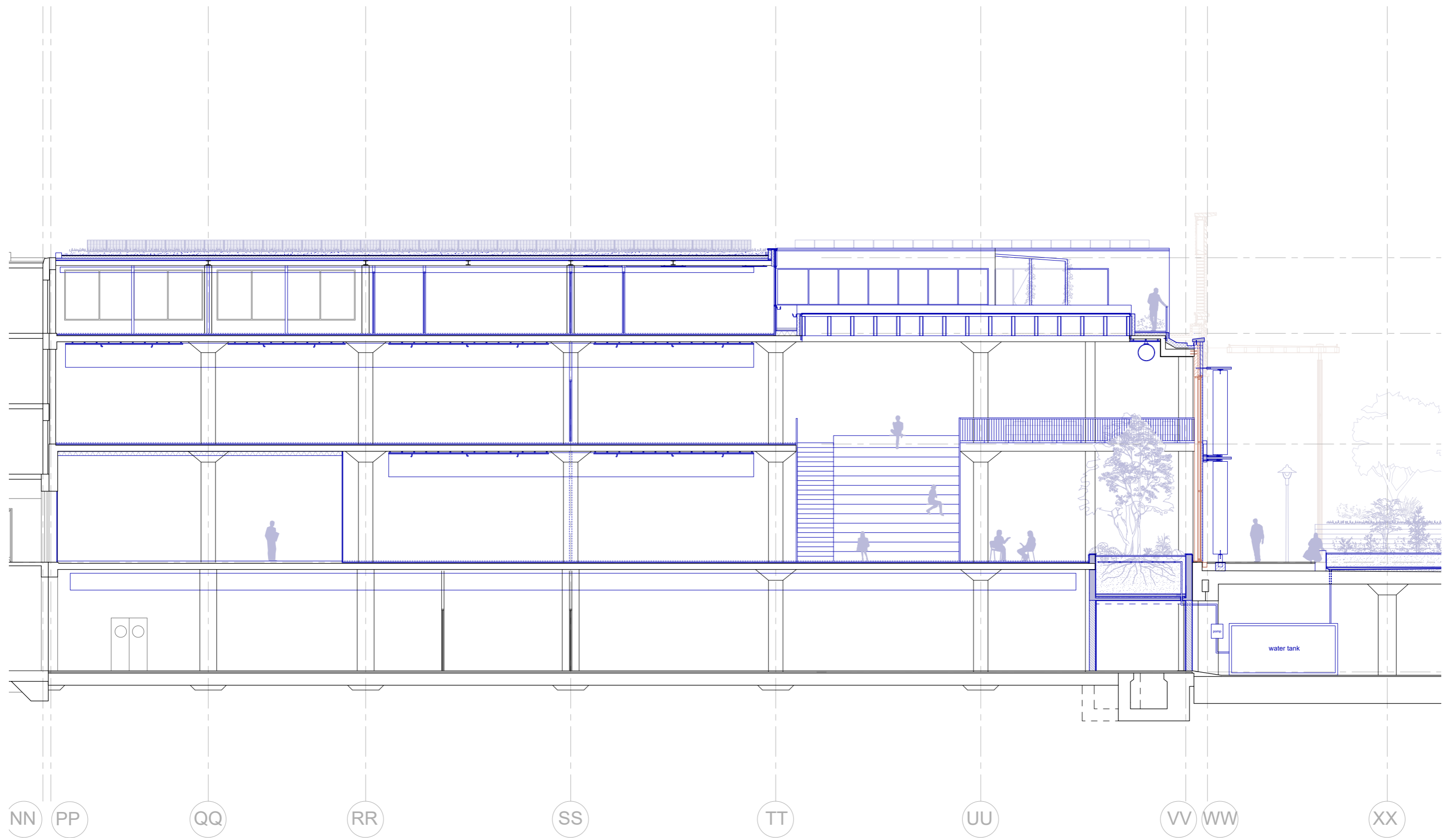
- 1. Services - AHU
- 2. Green roof with PV panels



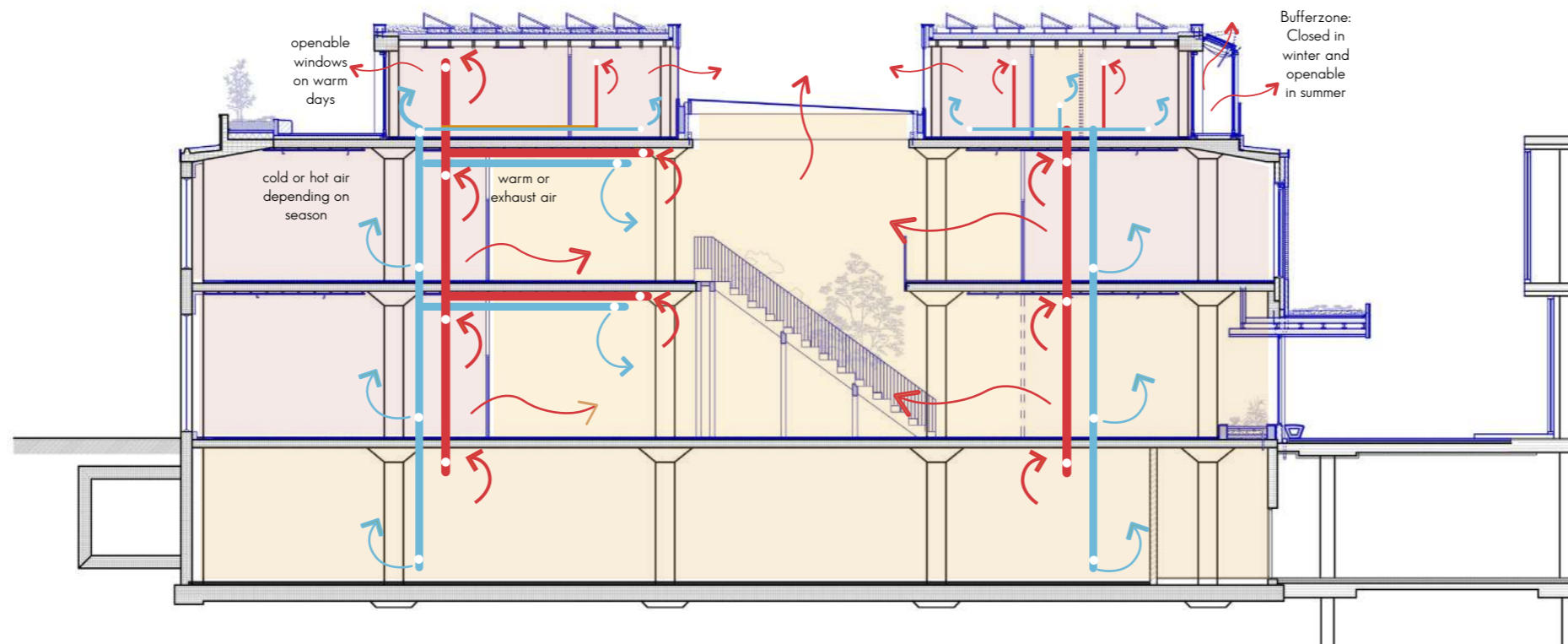
0 5 10 20 m







Thermal zones

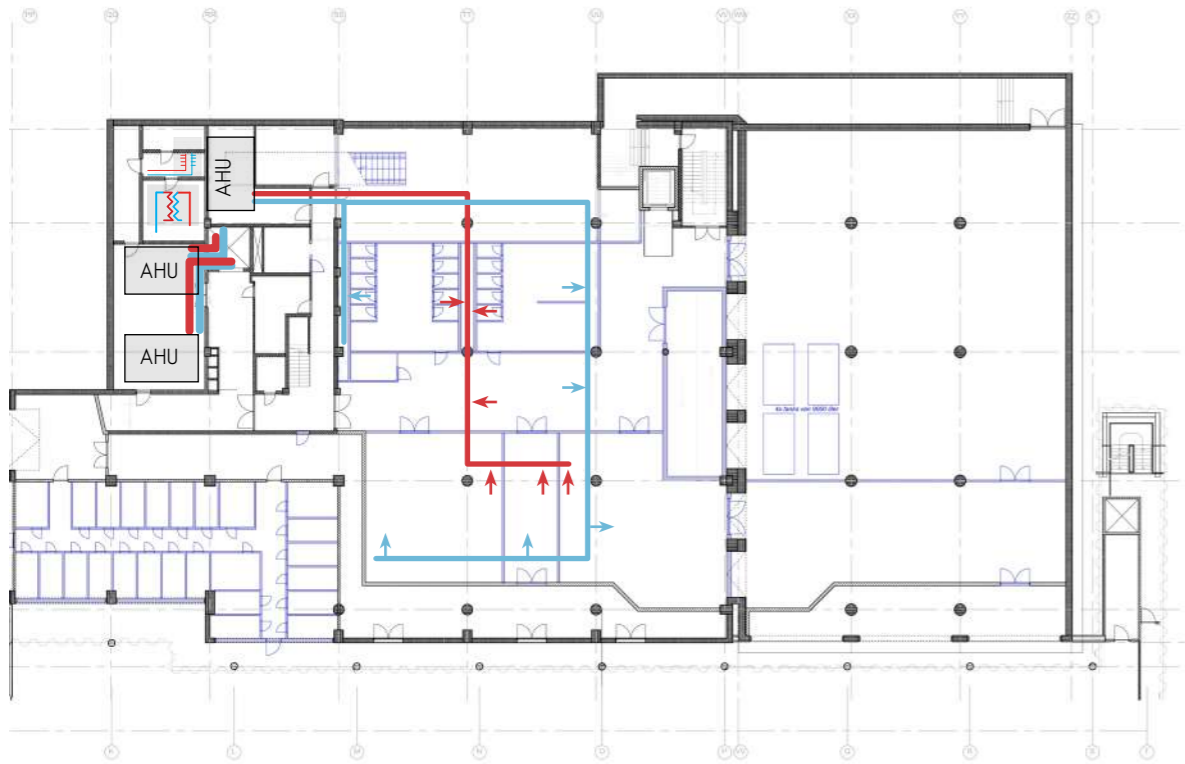


- 18 - 24 degrees | Offices and workshop spaces
- 18 - 20 degrees | Workout, flexible spaces and hallways
- 16 - 20 degrees | Atrium

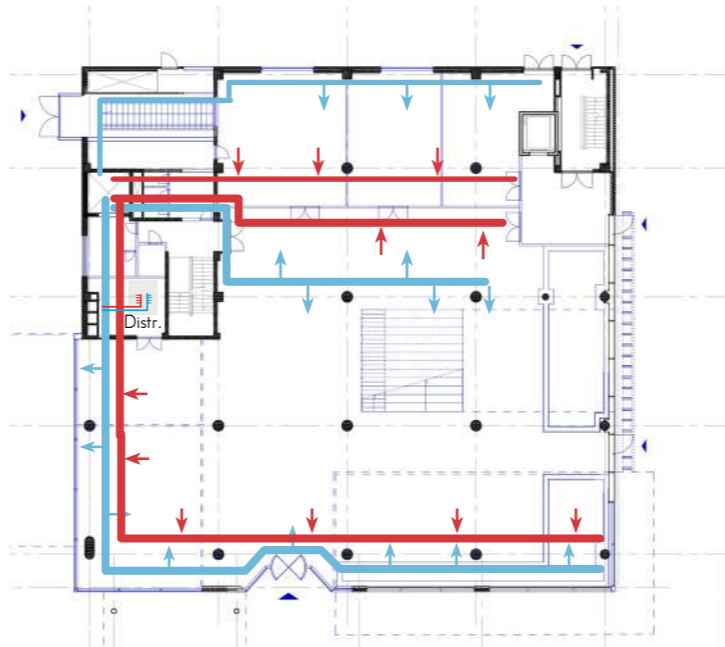
Air based heating, cooling and ventilation system

- Supply air (warm air in winter, cool air in summer)
- Exhaust air (warm air in summer)

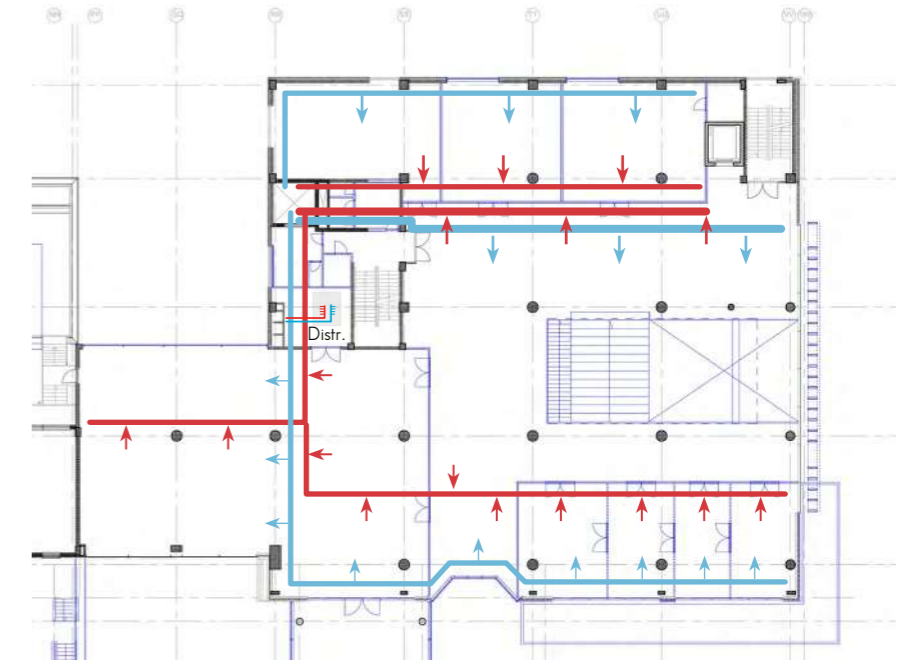
Basement



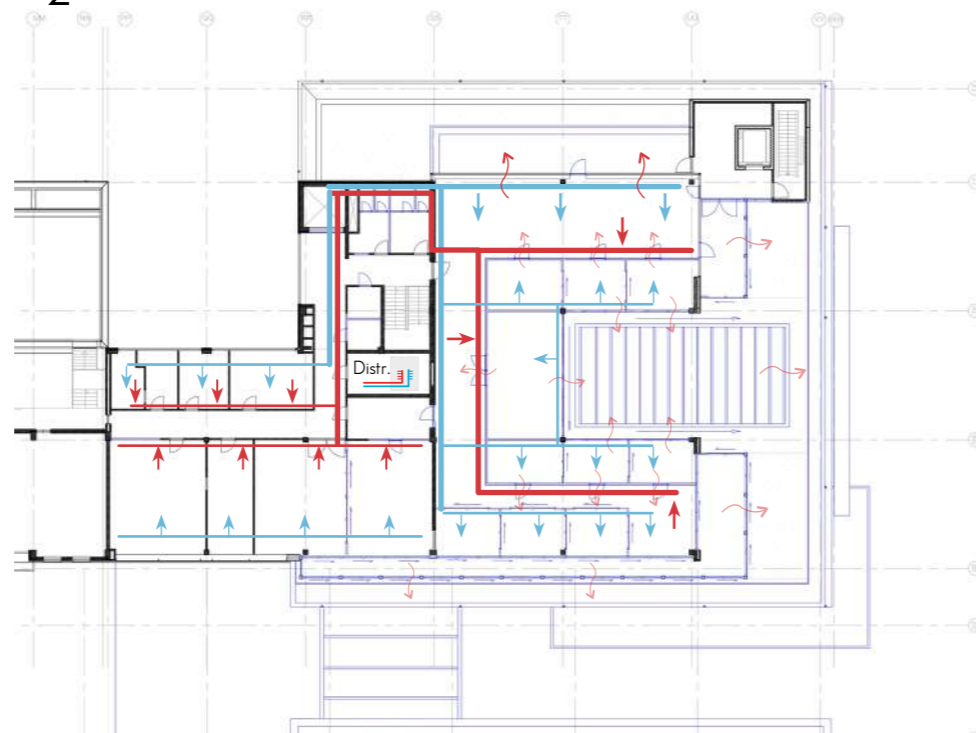
0



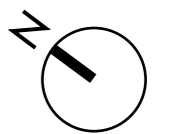
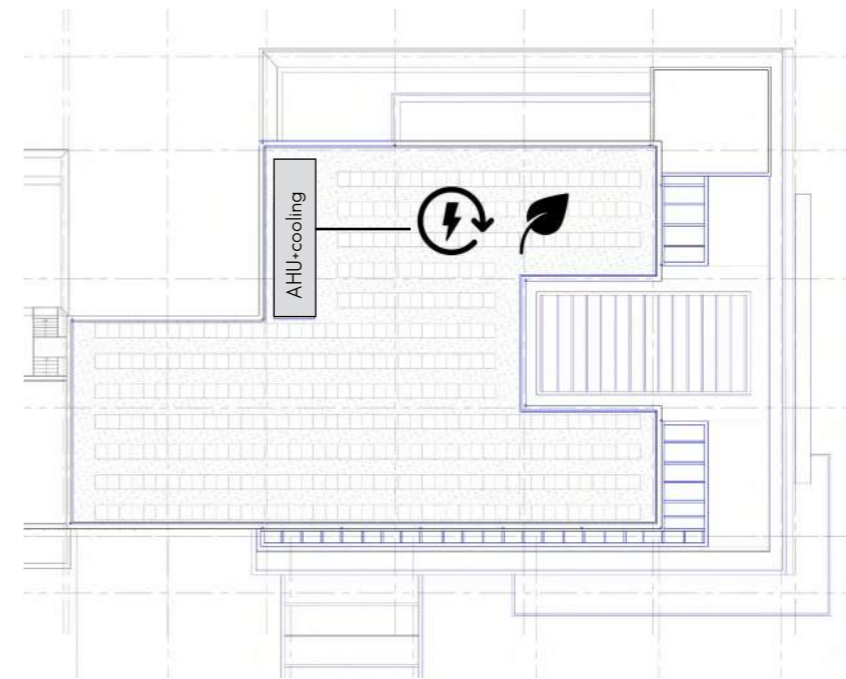
1



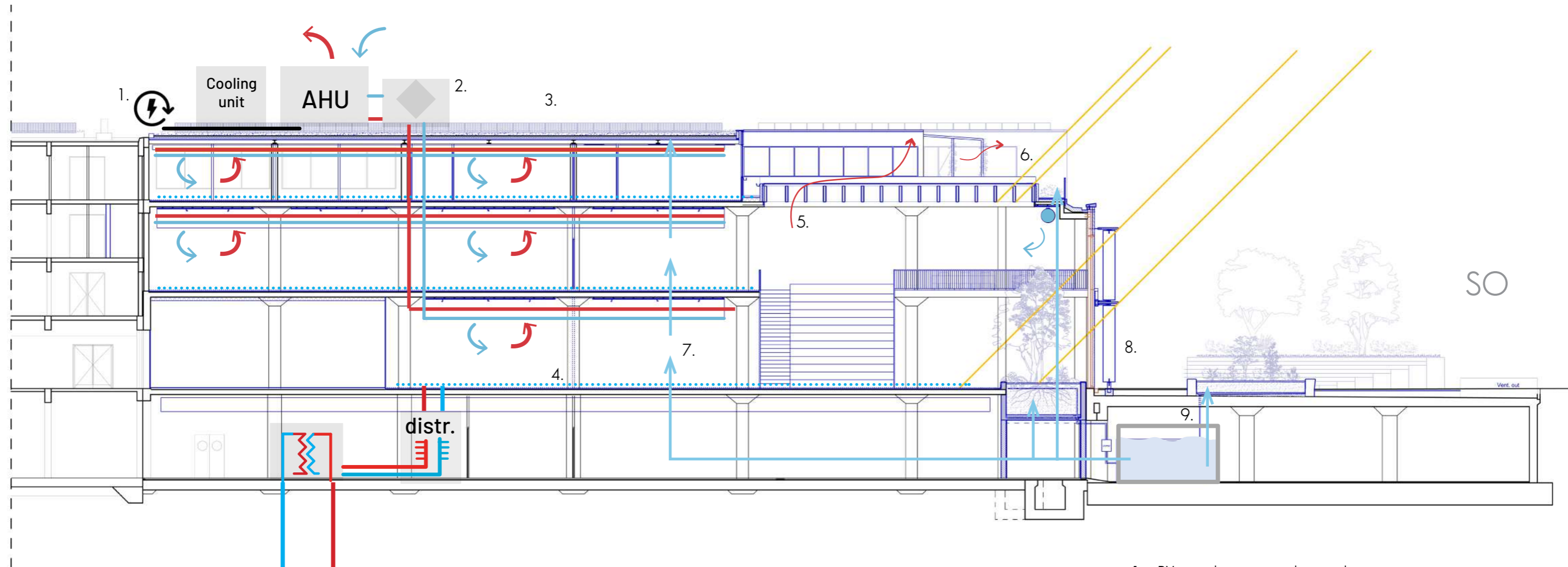
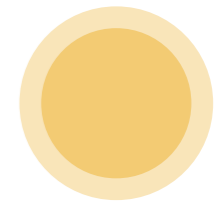
2



Roof plan



Summer climate

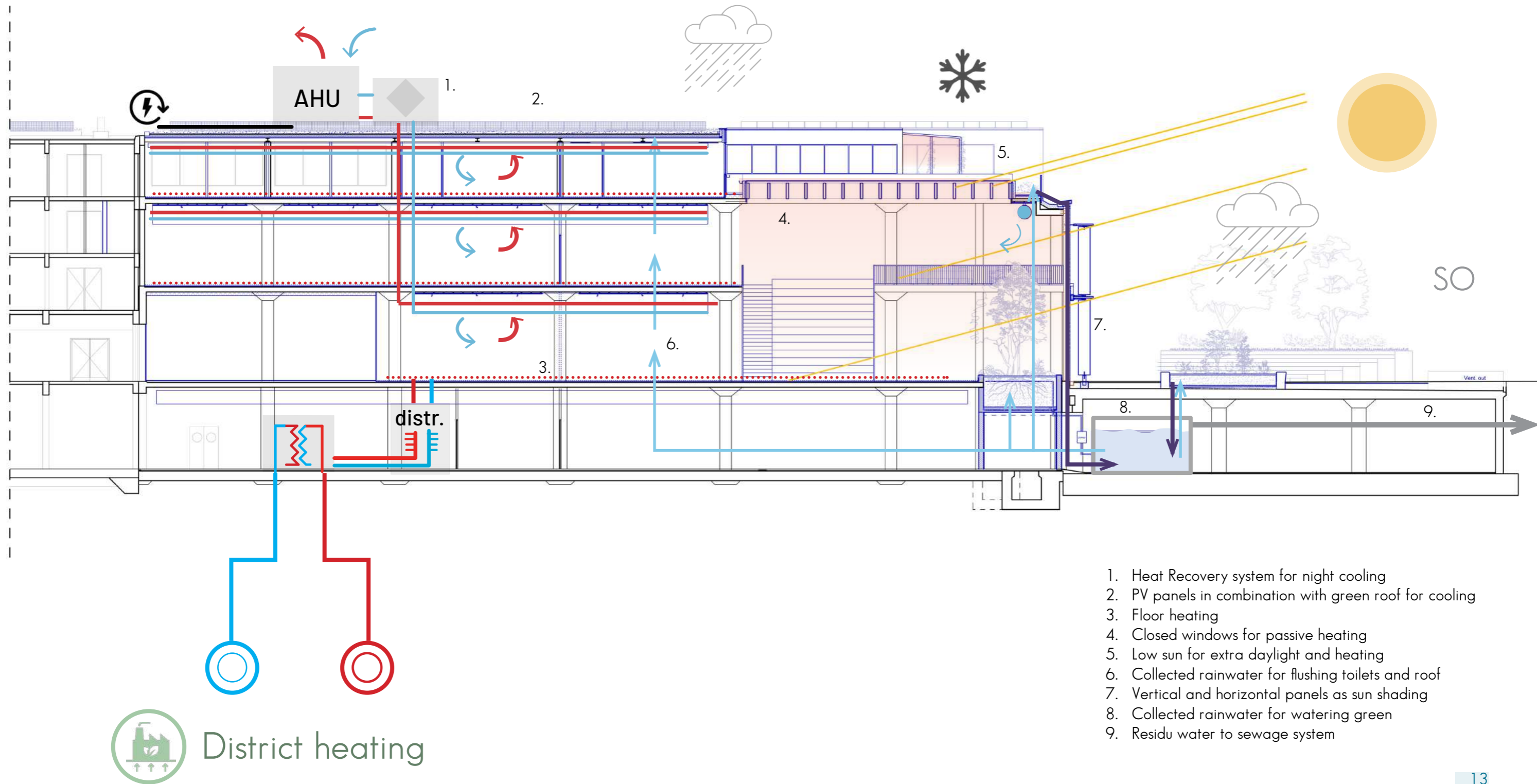


1. PV panels connected to cooling system
2. Heat Recovery system for night cooling
3. PV panels in combination with green roof for cooling
4. Floor cooling
5. Openable windows to avoid overheating
6. Indirect daylight
7. Collected rainwater for flushing toilets and roof
8. Vertical and horizontal panels as sun shading
9. Collected rainwater for watering green



District heating

Winter climate



1. Heat Recovery system for night cooling
2. PV panels in combination with green roof for cooling
3. Floor heating
4. Closed windows for passive heating
5. Low sun for extra daylight and heating
6. Collected rainwater for flushing toilets and roof
7. Vertical and horizontal panels as sun shading
8. Collected rainwater for watering green
9. Residu water to sewage system