

Air traffic assignment based on daily population mobility to reduce aircraft noise effects and fuel consumption

Ho-Huu, Vinh; Ganić, Emir; Hartjes, Sander; Babić, Obrad; Curran, Richard

DOI

[10.1016/j.trd.2019.04.007](https://doi.org/10.1016/j.trd.2019.04.007)

Publication date

2019

Document Version

Accepted author manuscript

Published in

Transportation Research Part D: Transport and Environment

Citation (APA)

Ho-Huu, V., Ganić, E., Hartjes, S., Babić, O., & Curran, R. (2019). Air traffic assignment based on daily population mobility to reduce aircraft noise effects and fuel consumption. *Transportation Research Part D: Transport and Environment*, 72, 127-147. <https://doi.org/10.1016/j.trd.2019.04.007>

Important note

To cite this publication, please use the final published version (if applicable). Please check the document version above.

Copyright

Other than for strictly personal use, it is not permitted to download, forward or distribute the text or part of it, without the consent of the author(s) and/or copyright holder(s), unless the work is under an open content license such as Creative Commons.

Takedown policy

Please contact us and provide details if you believe this document breaches copyrights. We will remove access to the work immediately and investigate your claim.

Air traffic assignment based on daily population mobility to reduce aircraft noise effects and fuel consumption

Vinh Ho-Huu^{a,*†}, Emir Ganić^{b,*†}, Sander Hartjes^a, Obrad Babić^b, Richard Curran^a

^a*Faculty of Aerospace Engineering, Delft University of Technology, P.O. Box 5058, 2600 GB Delft, The Netherlands*

^b*Faculty of Transport and Traffic Engineering, University of Belgrade, 305 Vojvode Stepe Street, Belgrade, Serbia*

E-mails: v.hohuu@tudelft.nl (Vinh Ho-Huu)

e.ganic@sf.bg.ac.rs (Emir Ganić)

s.hartjes@tudelft.nl (Sander Hartjes)

o.babic@sf.bg.ac.rs (Obrad Babić)

r.curran@tudelft.nl (Richard Curran)

*Corresponding authors: v.hohuu@tudelft.nl; e.ganic@sf.bg.ac.rs

†These authors contributed equally to this work.

Abstract

The paper first investigates the influence of daily mobility of population on evaluation of aircraft noise effects. Then, a new air traffic assignment model that considers this activity is proposed. The main objective is to reduce the number of people affected by noise via lowering as much as possible the noise exposure level L_{den} of individuals or groups of people who commute to the same locations during the day. It is hereby intended to reduce the noise impact upon individuals rather than to reduce the impact in particular— typically densely populated – areas. However, sending aircraft farther away from populated regions to reduce noise impact may increase fuel burn, thus affecting airline costs and sustainability. Therefore, a multi-objective optimization approach is utilized to obtain reasonable solutions that comply with overall air transport sustainability. The method aims at generating a set of solutions that provide proper balance between noise annoyance and fuel consumption. The reliability and applicability of the proposed method are validated through a real case study at Belgrade airport in Serbia. The investigation shows that there is a difference between the number of people annoyed (NPA) evaluated based on the census data and the NPA evaluated based on the mobility data. In addition, these numbers differ significantly across residential locations. The optimal results show that the proposed model can offer a considerable reduction in the

60
61
62 NPA, and in some cases, it can gain up to 77%, while maintaining the same level of fuel
63
64 consumption compared with the reference case.
65
66

67 **Keywords:** Air traffic noise; airport noise; aircraft noise; noise annoyance; fuel consumption;
68 multi-objective optimization.
69
70

71 72 **1. Introduction** 73

74
75 Proper allocation of aircraft to departure and arrival routes may play an important role in
76
77 reducing aircraft noise effects on communities located near airports, and this issue has
78
79 attracted considerable attention of researchers and authorities over the years. Although this
80
81 topic has been well studied, research is often conducted based on census data, and hence it is
82
83 assumed that people remain at the same location throughout the day. In reality, however,
84
85 people spend substantial portion of the day at school, work or other places outside their
86
87 homes. Consequently, analyses of daily population mobility have been considered in many
88
89 transportation studies (Hatzopoulou and Miller, 2010; Jiang et al., 2017; Kaddoura et al.,
90
91 2016; Novák and Sýkora, 2007) as an important factor for a more precise estimation of noise
92
93 effects. Nevertheless, there is a lack of this kind of research for air traffic assignment
94
95 problems. This paper, therefore, first investigates the influence of population's daily mobility
96
97 upon evaluation of aircraft noise effects. Then, a new air traffic assignment model that takes
98
99 daily movement of population into account is proposed. In the proposed model, the main
100
101 objective is to minimize the number of people affected by aircraft noise while maintaining
102
103 fuel consumption as low as possible. In order to achieve this purpose, a multi-objective
104
105 optimization approach is utilized herein. The method aims at producing a set of solutions that
106
107 are able to deliver a proper balance between conflicting objectives, i.e., noise annoyance and
108
109 fuel consumption. An extensive review of the literature that served as the background and that
110
111 motivated the authors to conduct this research is presented below.
112
113
114
115
116
117
118

119
120
121 Over the years, significant efforts have been devoted to relieving the noise impact as well
122
123 as to reducing fuel consumption and pollutant emissions. At the European level, a legislative
124
125 framework **has been introduced**, namely the Environmental Noise Directive 2002/49/EC
126
127 (END) (EC, 2002) for the assessment and management of environmental noise. **The Directive**
128
129 **regulated the obligation to develop strategic noise maps and noise action plans with the aim of**
130
131 **avoiding, preventing and reducing the harmful effects of noise on public health, and these**
132
133 **have been successfully implemented at many airports (Glekas et al., 2016; Vogiatzis, 2014,**
134
135 **2012). After more than 15 years of enforcement, both the implementation review and the**
136
137 **evaluation of END have been done twice so far, addressing questions related to effectiveness,**
138
139 **efficiency, coherence, relevance and EU added value (European Commission, 2016). In**
140
141 **addition, common noise assessment methods (CNOSSOS-EU) for the determination of the**
142
143 **noise indicators L_{den} and L_{night} have been adopted by the EC through the revision of Annex II**
144
145 **of the END in 2015 (Coelho et al., 2011; Kephelopoulos et al., 2014; Vogiatzis and Remy,**
146
147 **2014). CNOSSOS-EU has been developed to improve the consistency and the comparability**
148
149 **of noise assessment results across the EU member states, providing a harmonized framework**
150
151 **for assessment of each noise source covered by END. Upon the release of the Directive,**
152
153 numerous initiatives to reduce fuel consumption and emissions have been launched in recent
154
155 years, **as well**. The examples include the Atlantic Interoperability Initiative to Reduce
156
157 Emissions (AIRE)¹, Asia and South Pacific Initiative to Reduce Emissions (ASPIRE)², ACI
158
159 Airport Carbon Accreditation³, and **the** European Advanced Biofuels Flightpath⁴.
160
161
162
163

164 In addition to **the above** initiatives that require enormous budgets and focus more on
165
166 strategical levels, at a practical level it has been observed that the variation of aircraft/airport
167
168 operational procedures is one of the feasible options **that** could bring short-term
169
170

171 ¹https://ec.europa.eu/transport/modes/air/environment/aire_en (assessed 9 September 2018)

172 ²<https://aviationbenefits.org/case-studies/aspire/> (assessed 9 September 2018)

173 ³<https://www.airportcarbonaccreditation.org/> (assessed 9 September 2018)

174 ⁴<https://www.biofuelsflightpath.eu/about> (assessed 9 September 2018)
175
176
177

178
179
180 improvements and could be less costly (Marais et al., 2013). From this perspective, literature
181
182 shows that research efforts in designing optimal departure and arrival routes with less noise
183
184 and fuel burn have been well studied over the past decades, and various strategies have been
185
186 proposed (Prats et al., 2011; Visser, 2005; Visser and Wijnen, 2001). Recently, with the
187
188 utilization of multi-objective optimization techniques, research has also demonstrated that the
189
190 obtained optimal routes are beneficial not only from the noise perspective, but also in terms of
191
192 fuel burn (Ho-Huu et al., 2017; Vinh Ho-Huu et al., 2018; Torres et al., 2011; Zhang et al.,
193
194 2018). In addition to efforts invested to improve environmentally friendly departure and
195
196 arrival routes, optimal distribution of aircraft and operational procedures to specific routes
197
198 could also contribute significantly to environmental impact decrease (Frair, 1984; Heblj et
199
200 al., 2007; Kuiper et al., 2013; Netjasov, 2008; Nibourg et al., 2012; Zachary et al., 2011,
201
202 2010).

203
204
205 In order to assess the impact of flight operations on communities located near airports, it
206
207 is critical to include distribution data of populations in the vicinity of airports, as done in a
208
209 number of previous studies. However, census data takes into account only the homes of
210
211 people, whereas, in reality, people spend substantial portions of the day at work, school,
212
213 university or other places away from their residential locations. Consequently, the population
214
215 may experience noise exposures which are very different from the ones predicted when using
216
217 only the census data. One of the first studies that has called attention to the drawback of
218
219 relying on census data was carried out by Ott (1982). In this study, the author shows that
220
221 employees and students usually spend a long time away from their residential locations, and
222
223 this leads to a different overall impact of, in this case, air pollutants. The same observation is
224
225 also recognized in a recent study by Kaddoura et al. (2017). In this work, the authors suggest
226
227 that the evaluation of population's exposure to road traffic noise should take spatial and
228
229
230
231
232
233
234
235
236

237
238
239 temporal variations in the population into account, because the use of static data would lead to
240
241 an overassessment.
242

243 One of the first **air traffic assignment** studies that **takes** daily mobility of population into
244
245 account was done by **Ganić et al. (2018)**. In this study, however, the evaluation of noise
246
247 effects is based only on the change of population at several locations through three different
248
249 periods of **day**, and is hence treated as three separate optimization problems. Furthermore, the
250
251 model of air traffic assignment developed in **Ganić et al. (2018)** has some limitations, as well.
252
253 The problem was formulated as a binary nonlinear optimization problem, in which, for each
254
255 operation, every feasible assignment of routes was considered a decision variable. Therefore,
256
257 the size of the problem is **rather** large and hence **it is** difficult to solve **the problem** when the
258
259 number of aircraft operations increases. In addition, only the noise objective is considered,
260
261 while fuel consumption and local air quality are not considered, and these may very well be
262
263 adversely affected.
264
265

266
267 Motivated by the above limitations, the authors of this paper considered the information
268
269 **on** daily mobility of population in the air traffic assignment model. To evaluate whether the
270
271 inclusion of mobility data is necessary or not, the influence of census and mobility data on
272
273 evaluation of noise effects is investigated first. Then, a new air traffic assignment model that
274
275 is capable of taking daily mobility of population into account is developed. In order to reduce
276
277 the number of people affected by aircraft noise, the noise exposure level L_{den} is **calculated** for
278
279 each individual or group of people who commute to the same locations during **an** entire day
280
281 from 00:00 to 24:00 hours. Afterwards, a noise annoyance criterion recommended by **EEA**
282
283 **(2010)** is employed to obtain the number of people annoyed. Furthermore, to acquire optimal
284
285 solutions which are able to balance **between** noise impact and fuel consumption **effectively**, a
286
287 bi-objective optimization problem is formulated. In addition, since the considered problem is
288
289 an integer nonlinear multi-objective optimization problem, it is **rather** difficult to solve **it** by
290
291
292
293
294
295

296
297
298 nonlinear optimization programming models as applied in [Ganić et al. \(2018\)](#). To allow the
299
300 problem to be solved **with** a multi-objective evolutionary algorithm, a new problem
301
302 formulation is proposed. In the proposed formulation, each operation is considered a decision
303
304 variable, and its feasible assignments of routes, after taking into account wind conditions,
305
306 runway configurations and separation minima, are considered its search space. **With the**
307
308 **application of** this formulation, the size of the problem reduces significantly, and hence the
309
310 problem can be solved **effectively** by employing an evolutionary algorithm. The proposed
311
312 approach is then applied to a real case study at Belgrade airport in Serbia.
313
314

315 The structure of the paper is as follows. In Section 2, first the problem definition is
316
317 presented, and then the mathematical formulation and data preparation are described in detail.
318
319 Section 3 provides a brief description of the optimization method, namely the non-dominated
320
321 sorting genetic algorithm (NSGA-II) which is applied to solve the formulated problem. The
322
323 Belgrade airport case study is presented in Section 4. The results and discussion are presented
324
325 in Section 5. Finally, some conclusions, remarks and ideas for future work are **presented** in
326
327 Section 6.
328
329

330 **2. Problem definition**

331
332
333 **This section presents** the model of the air traffic assignment problem in detail. The main idea
334
335 of the formulated problem is to assign aircraft to suitable routes with the aim of minimizing
336
337 noise impact on communities close to the airport and fuel consumption. First, the
338
339 mathematical form is presented. Then, the preparation of the input data is described.
340
341

342 **2.1. Mathematical formulation**

343
344
345 The mathematical model of the optimization problem is formed based on several assumptions
346
347 which are explained in detail in subsection 2.2. The model is described through three
348
349 components: notations, decision variables, and objective functions, as follows.
350
351
352
353
354

355
356
357 **Notations:**
358

359 O is the set of aircraft movements departing from and arriving at an airport during a
360
361 considered day;
362

363 S_i is the set of feasible routes to which aircraft movement i can be assigned, and which takes
364
365 into account runway configuration, wind conditions and separation minima, $i \in O$;
366

367 L is the number of considered locations;
368

369 J is the set of individual persons or groups of people commuting to the same location during
370
371 an entire day (from 00:00 to 24:00 hour);
372

373 T is the number of time periods;
374

375 SEL_{ilt} is the sound exposure noise level (SEL) generated by the movement i at the time t and
376
377 the location l , $i \in O$, $t \in T$, $l \in L$;
378

379 p_j is the number of people in the group of people j who commute to the same location at the
380
381 same time during the day, $j \in J$;
382
383
384

385 **Decision variables:**
386

387 x_i is an integer design variable of route assignment of the movement i , which is selected from
388
389 the set of feasible operational options S_i ($x_i \in S_i$). It should be noted that the noise level SEL
390
391 at all locations in L and the fuel consumption for an entire flight are predefined for each
392
393 option within S_i .
394
395

396 \mathbf{x} is the vector of the design variable x_i , containing the optimal assignments of all movements
397
398 to routes.
399

400 **Objective functions:**
401

402
403 With the aim of finding optimal solutions that are capable of balancing effectively between
404
405 the number of people affected by aircraft noise and fuel consumption, an optimization
406
407 problem with two objectives is considered. The first one is the total number of people
408
409 annoyed (hereinafter referred to as NPA), which is defined as follows:
410
411
412
413

$$NPA(\mathbf{x}) = \sum_{j \in J} \%PA_j \cdot p_j \quad (1)$$

where $\%PA_j$ is the percentage of the group of people j who are annoyed due to being exposed to a certain level of aircraft noise. According to [EEA \(2010\)](#), it is based on the L_{den} cumulative noise metric, and estimated as follows:

$$\begin{aligned} \%PA_j = & 8.588 \times 10^{-6} (L_{den_j} - 37)^3 + \\ & 1.777 \times 10^{-2} (L_{den_j} - 37)^2 + 1.221 (L_{den_j} - 37) \end{aligned} \quad (2)$$

where L_{den_j} is the day-evening-night noise level to which the group of people j is exposed during the day, and it is determined as follows:

$$L_{den_j} = 10 \log_{10} \left(\frac{1}{T_d} \left(\sum_{i \in O} \sum_{t \in T} 10^{\frac{SEL_{i,t} + w_{den}}{10}} \right) \right), \forall j \quad (3)$$

where $w_{den} = \{0, 5, 10\}$ is the weighting factor to account for day, evening and night time operations, and it is defined based on the time at which the movement i takes place. T_d is the considered time period of an entire day in seconds ($T_d = 24 \times 3600$ seconds). It should be noted that, for further analyses in the later sections, the number of people who are highly annoyed (hereinafter referred to as NPHA) is used as well. [This criterion](#) is also developed by [EEA \(2010\)](#) and defined as follows:

$$NPHA(\mathbf{x}) = \sum_{j \in J} \%PHA_j \cdot p_j \quad (4)$$

where $\%PHA_j$ is the percentage of the group of people j who are highly annoyed due to [their exposure](#) to a certain level of aircraft noise, and it is calculated by

$$\begin{aligned} \%PHA_j = & 9.199 \times 10^{-5} (L_{den_j} - 42)^3 + \\ & 3.932 \times 10^{-2} (L_{den_j} - 42)^2 + 0.2939 (L_{den_j} - 42) \end{aligned} \quad (5)$$

473
474
475 The second objective is the total fuel burn. The EMEP/EEA air pollutant emission
476 inventory guidebook – 2016 (Part B: sectoral guidance chapters, 1.A.3.a Aviation 2016)
477 (Winther et al., 2017) is used to calculate the fuel consumption for each operation.
478
479

480
481 Particularly, the LTO and Master Emission calculators in Annex 5 of this document, which
482 use the data from the ICAO Aircraft Engine Emissions Databank (ICAO, 2017), are applied.
483
484 These calculations have been done in the previous study (Ganić et al., 2018), and they are
485
486 again to be used in this research. Then, the fuel objective is defined as follows:
487
488

$$489 \quad T_{fuel}(\mathbf{x}) = \sum_{i \in O} fuel(x_i) \quad (6)$$

490
491 where $fuel(x_i)$ is the fuel consumption for the movement i .
492
493

494 495 **2.2. Data requirements**

496
497 As described in the notations, the model needs the following input data:
498
499

- 500 • air traffic data,
- 501
- 502 • departure and arrival routes for each runway with a predefined set of feasible routes,
- 503
- 504 • population locations,
- 505
- 506 • noise data for each location caused by all aircraft operating on all feasible routes,
- 507
- 508 • fuel consumption of all aircraft operating on all feasible routes,
- 509
- 510 • population data,
- 511
- 512 • daily mobility patterns.
- 513
- 514
- 515

516 The air traffic data includes information about origin and destination, aircraft type, actual
517 take-off time, arrival time, and runway in use. This information can be obtained from Air
518 Traffic Control. Real radar data can be used to represent departure and arrival routes, or the
519 routes can be obtained from Aeronautical Information Publication (AIP). In this research
520 radar data were used. Runway configuration, wind condition forecasts from METAR reports
521
522
523
524
525
526
527
528
529
530
531

532
533
534 and separation minimum are taken into account to determine the set of feasible routes for each
535
536 aircraft operation.

538 The noise levels caused by each aircraft movement on all feasible routes need to be
539 determined a priori and stored in a database. The locations at which the noise is determined
540 coincide with the census data and the data on population's daily mobility. Considering the low
541 level of detail required for this research, each settlement can be represented as a single point,
542 i.e., location since it is not required to observe each housing unit in particular.

549 The fuel consumption is calculated by using the EMEP/EEA air pollutant emission
550 inventory guidebook – 2016 (Winther et al., 2017). Fuel burn for Landing and Take-Off
551 (LTO) flight phases is assessed by using the origin and destination information of airports, as
552 well as aircraft type (engine type, number of engines), duration for each LTO phase (taxi, take
553 off, climb out, approach) and rate of fuel burn (kg/s/engine). For Climb/Cruise/Descent
554 (CCD) flight phases fuel consumption is calculated based on CCD stage length and aircraft
555 type.

564 Static population data are collected for each location based on the census data. Census
565 data essentially represent home addresses of the population. To account for daily mobility
566 patterns the population is divided into groups of people commuting to the same locations
567 during the day at the same time period. Daily mobility presented in this paper includes a
568 special form of spatial mobility of economically active populations (who perform an
569 occupation), pupils and students. This data for each municipality around the airport is
570 available at National Statistical Office (Statistical Office of the Republic of Serbia, 2013).

579 3. Optimization algorithm

582 As described in Section 2, the formulated problem is an integer nonlinear optimization
583 problem with two objective functions. Thus, it is rather challenging to solve it using gradient-
584 based optimization methods or nonlinear programming models. The difficulties lie in two

591 aspects. Firstly, the decision variables are options **that** do not link directly to the objective
592 functions, and hence they are difficult to solve **with** gradient-based optimization methods and
593 nonlinear programming models. Secondly, even under the assumption that these models can
594 be applied, they need to be combined with other techniques, such as weight methods, to solve
595 the multi-objective optimization problem. Nevertheless, it is still hard to decide which weight
596 vectors should be used. **In addition**, it is challenging to obtain a well-distributed Pareto front
597 by **applying** these approaches when the considered problem is nonlinear.

608 Fortunately, many evolutionary algorithms capable of effectively dealing with **similar**
609 problem have been proposed in recent years. Among them, the non-dominated sorting genetic
610 algorithm II (NSGA-II) proposed by [Deb et al. \(2002\)](#) has emerged as one of the most
611 powerful methods. The algorithm has been successfully applied in **various** engineering
612 applications, for instance, structural optimization problems ([Thang et al., 2018](#); [Vo-Duy et al.,](#)
613 [2017](#)), scheduling problems ([Martínez-Puras and Pacheco, 2016](#); [Wang et al., 2017](#)),
614 allocation problems ([Abouei and Taghi, 2018](#); [Alikar et al., 2017](#)), noise abatement departure
615 trajectories ([Hartjes and Visser, 2016](#)), etc.

625 The NSGA-II algorithm is the improved version of NSGA developed earlier by [Srinivas](#)
626 [and Deb \(1994\)](#) with a fast non-dominated sorting procedure and a crowded-comparison
627 technique. Due to the outstanding features of these techniques, the performance of NSGA-II
628 has been significantly enhanced in comparison to the previous version. In NSGA-II, the
629 optimization process is started with a random number of solutions called the initial population
630 P_t , in which t is the generation. Then, for each candidate solution in the population, the
631 objective functions are evaluated. In order to gradually evolve the population towards the
632 optimal solutions, from the previous (parent) population, an offspring population Q_t is
633 generated by using genetic operators, such as tournament selection, crossover and mutation.
634 Similarly, the objective function information of these solutions is also assessed. Next, both the
635
636
637
638
639
640
641
642
643
644
645
646
647
648
649

parent population and the offspring population are combined and denoted as R_t . From the combined population R_t , the fast non-dominated sorting procedure and the crowded-comparison technique are applied to obtain a new population P_{t+1} for the next generation. The algorithm repeats the same procedures until the maximum generation or a stopping condition is reached. Once the search process of the algorithm is terminated, the set of optimal solutions called the Pareto front is obtained. They are non-dominated solutions that can provide a sound basis for users to make decisions. A brief description of NSGA-II for one generation is shown in Fig. 1 (Deb et al., 2002).

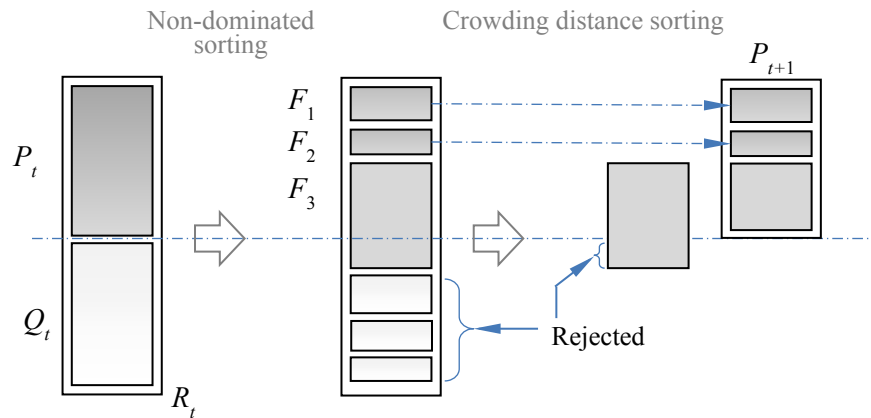


Fig. 1. Illustration of NSGA-II procedure.

Due to its outstanding performance, NSGA-II has been implemented in various programming languages including MATLAB, which is used in this paper. However, this version handles only the optimization problem with continuous design variables. Therefore, to enable the algorithm to solve the presented problem with integer design variables, a rounding technique is applied. By using this technique, whenever the algorithm introduces new candidate solutions, these solutions are all rounded to their nearest integer values before their objective functions are evaluated. Although the technique is rather simple, it has been demonstrated to be effective when dealing with discrete and integer design variables in evolutionary algorithms (V. Ho-Huu et al., 2018).

4. Case study: Belgrade Airport

In order to validate and demonstrate the reliability and applicability of the proposed approach, Belgrade Airport is selected as the case study in this paper. The airport is the largest and the busiest international airport in Serbia, located 18 km west of the Belgrade capital. With a single runway 3,400 m long (direction 12/30), the airport handled more than 5 million passengers and approximately 60 thousand aircraft operations in 2018.

As presented in Section 2, detailed air traffic data is required to prepare the input data for the model. The operations on September 16th, 2016 were chosen as it was a summer day with relatively heavy traffic. In addition, some of the data have been already available from the previous study (Ganić et al., 2016), which included measured noise levels at locations near the airport as well. Daily traffic comprised of 220 operations, consisting of 109 departures and 111 arrivals. The distribution of operations between runways was slightly in favor of runway 12, which handled 128 operations (58.2%), while runway 30 was used for 92 operations (41.8%). Departure and arrival routes for each runway were obtained from the radar data (flightradar24.com) because the Standard Instrument Departure (SID) and Standard Arrival Routes (STAR) could be less accurate, as most aircraft are vectored at Belgrade Airport.

From the radar tracks presented in Fig. 2a, 27 representative routes were selected, each representing a SID or STAR route. There are seven departure routes and seven arrival routes from runway 12 (Fig. 2b), and six departure routes and seven arrival routes from runway 30 (Fig. 2c). Departure routes are marked blue, and arrival routes are marked red. Note that since operations in solutions obtained by the proposed model could be assigned to arrival/departure routes that are different from the ones assigned in the reference case (the base-case scenario), the routes shown in Fig. 2b and Fig. 2c are complemented by parts of the route which connect them with border corridors applied in the reference case. For more details, interested readers may refer to Ganić et al. (2018). Noise and fuel data have to be defined for each aircraft type.

768
 769
 770 For the observed day, the fleet mix consisted of 25 different aircraft types. However, in an
 771 effort to simplify the calculations, the aircraft were classified into 11 groups based on the
 772 similarity of aircraft types **using principles of acoustic equivalency and noise significance**
 773 **(ECAC, 2016)**. Thereby, 85% of the operations are presented by the aircraft types that were
 774 actually operated that day, while the remaining 15% are presented by aircraft types that have
 775 approximately the same level of noise exposure and fuel consumption as their representative
 776 type. **Table 1** shows the number of departure and arrival operations for different periods with
 777 different aircraft types that are categorized based on the INM **(Federal Aviation**
 778 **Administration, 2007)**. **The classification of these aircraft types in AzB databases is also**
 779 **provided and it can be used as an alternative when the AzB noise model is applied (AzB-08,**
 780 **2008; Isermann and Vogelsang, 2010).**

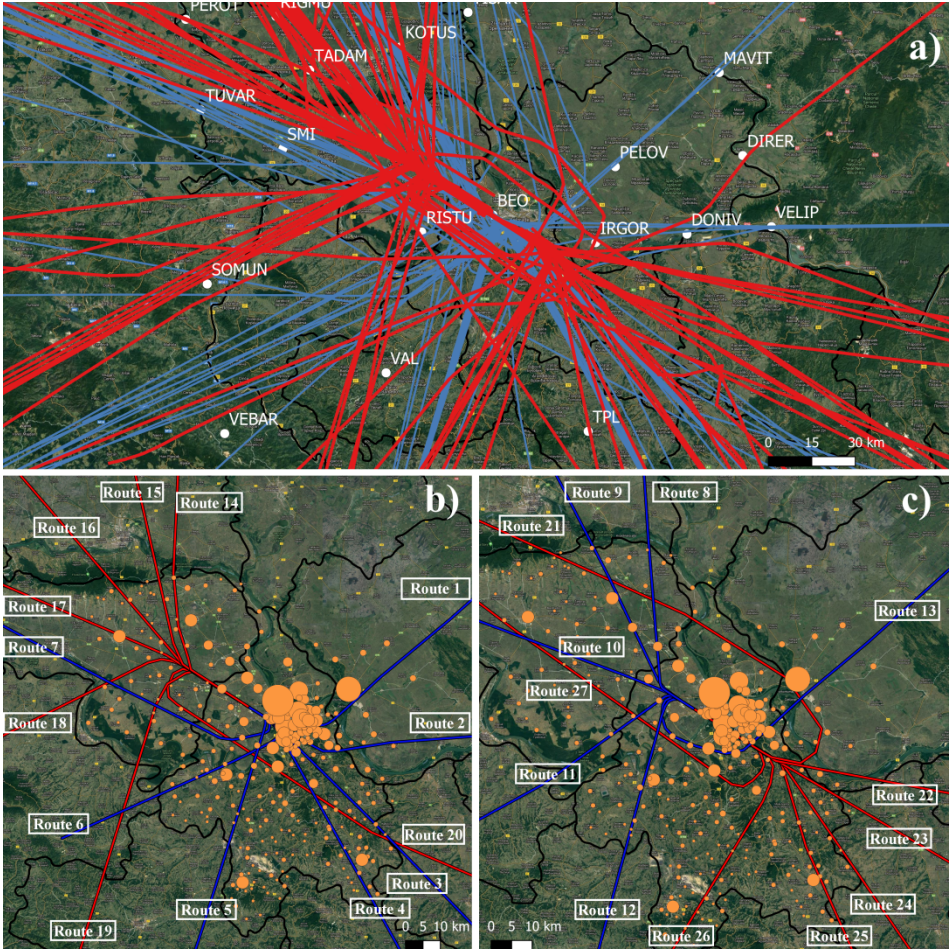


Fig. 2. Radar data and representative departure and arrival routes (source: Flightradar24.com using QGIS).

827
828
829
830
831
832
833
834
835
836
837
838
839
840
841
842
843
844
845
846
847
848
849
850
851
852
853
854
855
856
857
858
859
860
861
862
863
864
865
866
867
868
869
870
871
872
873
874
875
876
877
878
879
880
881
882
883
884
885

Table 1. Flight statistics and aircraft classifications

Aircraft type	Assigned AzB class	INM airplane code	Departure			Arrival		
			Day	Evening	Night	Day	Evening	Night
Boeing 737-300	S 5.2	737300	6	1	1	5	2	2
Boeing 737-800	S 5.2	737800	2	2	1	3	0	1
Airbus A319	S 5.2	A319-131	18	5	5	19	2	8
Airbus A320	S 5.2	A320-211	15	3	3	14	3	5
Airbus A330-200	S 6.1	A330-301	1	1	0	0	1	1
Beechcraft King Air	P 1.4	CNA441	1	0	1	1	0	0
Cessna 560 XL	S 5.1	CNA560XL	3	0	1	2	1	1
Swearingen Metroliner	P 2.1	DHC6	3	1	0	3	0	1
ATR 42	P 2.1	DHC8	1	3	0	3	1	0
ATR 72	P 2.1	DO328	14	6	5	12	6	8
Embraer 190	S 5.2	EMB190	5	1	0	6	0	0
Total			69	23	17	68	16	27

The sound exposure levels (SEL) at each location caused by each aircraft type on the different routes are calculated by the INM software, which is used as input for the noise objective in the optimization model. For each operation, the standard INM profile settings are used and the fact that different aircraft types overfly locations at different altitudes and thrust settings is taken into account. In addition, different profile parameters for each aircraft type are also assigned, including take-off and landing weights, thrust and flaps settings, climb rate, and descent angle.

Before calculating the noise data, it is crucial to choose reasonable numbers and positions of locations for which the noise data and the population data will be obtained. Since the airport is surrounded by populated areas, 23 different municipalities are considered to be affected by aircraft noise, viz. 17 municipalities of Belgrade and 5 municipalities of Stara Pazova, Indjija, Irig, Ruma, Pecinći and Pančevo. In this case study, the SEL was calculated for 306 locations with each location representing one settlement in these 23 municipalities around the airport. Table 2 shows the population data and the number of settlements/locations for each municipality and for each period of time in accordance with human mobility patterns and 2011 census data (Statistical Office of the Republic of Serbia, 2013).

886
887
888
889
890
891
892
893
894
895
896
897
898
899
900
901
902
903
904
905
906
907
908
909
910
911
912
913
914
915
916
917
918
919
920
921
922
923
924
925
926
927
928
929
930
931
932
933
934
935
936
937
938
939
940
941
942
943
944

Table 2. Population data and the number of settlements for municipalities around the airport.

Municipality	Number of settlements	Census population (2011)	Period				
			1	2	3	4	5
Barajevo	14	27,110	25,050	24,422	26,020	25,559	26,497
Čukarica	9	181,231	166,349	159,679	172,064	168,848	176,209
Grocka	15	83,907	76,011	73,679	78,942	78,573	81,748
Lazarevac	34	58,622	60,304	62,146	59,584	60,969	59,545
Mladenovac	22	53,096	51,297	51,024	52,022	52,108	52,752
Novi Beograd	16	214,506	222,238	226,900	218,799	222,321	217,613
Obrenovac	29	72,524	69,586	68,859	70,803	70,635	71,802
Palilula	13	173,521	176,540	174,006	175,343	172,061	172,950
Rakovica	13	108,641	96,108	90,980	100,827	98,808	104,699
Savski venac	1	39,122	75,290	88,058	61,474	65,749	49,778
Sopot	17	20,367	19,270	19,054	19,930	19,711	20,122
Stari grad	1	48,450	88,436	96,797	73,554	71,702	57,748
Surčin	7	43,819	41,546	41,638	42,342	43,130	43,544
Voždovac	24	158,213	160,242	155,406	159,370	153,766	156,380
Vračar	1	56,333	64,953	66,643	61,698	61,250	58,312
Zemun	5	168,170	170,663	169,291	169,851	167,703	167,986
Zvezdara	11	151,808	147,073	140,364	148,991	143,108	148,303
Pančevo	10	123,414	119,466	119,439	121,154	121,946	122,873
Indžija	11	47,433	45,032	44,657	46,029	46,160	46,930
Irig	12	10,866	10,336	10,328	10,533	10,669	10,786
Pećinci	15	19,720	18,965	19,155	19,447	19,579	19,670
Ruma	17	54,339	51,925	52,171	52,991	53,643	54,060
Stara Pazova	9	65,792	61,430	61,113	63,249	63,797	65,018
Total	306	1,981,004	2,018,110	2015809	2,005,017	1,991,795	1,985,325
People living in other municipalities, but commuting to these 23 municipalities or vice versa		88,942	51,836	54,137	64,929	78,151	84,621

In order to take into account human mobility patterns and to simulate working shifts of employees, pupils and students, the day has been divided into five periods, as shown in Fig. 3. The periods are defined in such a way that the number of people at each location remains constant for the duration of the period. This data was made available by the Statistical Office of the Republic of Serbia.

Group Number	Period → Time of the day →	Period 1 08:00 - 14:00	Period 2 14:00 - 16:00	Period 3 16:00 - 20:00	Period 4 20:00 - 22:00	Period 5 22:00 - 08:00
1	Employees 1 st shift	Working location		Residential location		
2	Employees 2 nd shift	Residential location	Working location		Residential location	
3	Employees 3 rd shift	Residential location		Working location		
4	Students 1 st shift	Studying location	Residential location			
5	Students 2 nd shift	Residential location	Studying location		Residential location	
6	Staying at home	Residential location				
Number of aircraft movements		76	14	51	13	66

Fig. 3. Groups of people and periods based on working shifts of employees, pupils and students.

945
946
947 The definition provided in the 2011 Census methodology describes daily migrants as
948 persons who work or go to school/university outside the place of their usual residence, but
949 **they** return on a daily basis or several times a week (Statistical Office of the Republic of
950 [Serbia, 2013](#)). The daily mobility data is the key to calculate the total daily inflow and
951 outflow of inhabitants for each settlement. **This was used as the basis to calculate** groups of
952 people commuting to the same location at the same period of time during the day.
953
954
955
956
957
958
959

960 Having in mind that human mobility patterns are obtained for the whole day only, and not
961 for separate periods of the day, some assumptions are needed in order to assess how many
962 people would actually be present at each location during a defined period of time. Therefore,
963 it has been assumed that 50% of employees work first shift, 30% work second shift, and 20%
964 work night shift. Out of the total pupils and students going to schools or **universities**, 60%
965 follows the first shift, and 40% the second. **Hereby**, 76,423 groups of people were observed,
966 and the population data calculated based on the census **data** and **the** daily mobility data show a
967 difference in the number of people at each location in the pre-defined periods. The total
968 number of residents living within these 306 locations based on the census data was 1,981,004.
969 This research also includes the mobility of people living outside the 23 municipalities
970 mentioned above, but working or studying in some of these municipalities, and vice versa.
971
972
973
974
975
976
977
978
979
980
981
982

983 By comparing the total number of people for different periods with the census population
984 data, it can be seen that the highest absolute difference is 2% for Period 1. **The reason behind**
985 **is the fact that** this study takes into account only the daily mobility of employees going to
986 work and pupils and students going to schools and **universities**.
987
988
989
990
991
992

993 **5. Results and discussions**

994
995 As mentioned in Section 1, although the influence of the mobility data on evaluation of noise
996 effects has been well recognized in previous transportation studies ([Kaddoura et al., 2017,](#)
997 [2016](#)), the investigation of **mobility data** influence in air traffic models is still limited.
998
999
1000
1001
1002
1003

1004
1005
1006 Therefore, before executing the optimization problem, the influence of the mobility patterns
1007
1008 on evaluation of aircraft noise effects is assessed first. Afterwards, the optimal solutions based
1009
1010 on the mobility data and derived from the proposed model are obtained and analyzed.
1011

1012 1013 **5.1. Influence of daily population mobility on evaluation of aircraft noise effects** 1014

1015
1016 In order to assess the influence of census data and mobility data on evaluation of aircraft noise
1017
1018 effects, the real air traffic operations on 16 September 2016 are used, which is hereinafter
1019
1020 referred to as the reference case. The L_{den} noise contours caused by all the operations are
1021
1022 shown in Fig. 4, where the NPA at each (residential) location is also indicated. At first glance,
1023
1024 it can be observed that there is a significant difference between the census data and the
1025
1026 mobility data among noise-affected locations. In fact, with the census data (depicted by
1027
1028 triangles), only people at locations enclosed in the noise contours are affected. Meanwhile,
1029
1030 when using the mobility data (depicted by circles), the noise effects occur not only at these
1031
1032 locations, but also at locations outside of the noise contours. This can be explained by
1033
1034 considering that people who live outside the area affected by aircraft noise may work or study
1035
1036 within these areas at some time during the day, and are therefore affected by aircraft noise.
1037
1038
1039
1040
1041
1042
1043
1044
1045
1046
1047
1048
1049
1050
1051
1052
1053
1054
1055
1056
1057
1058
1059
1060
1061
1062

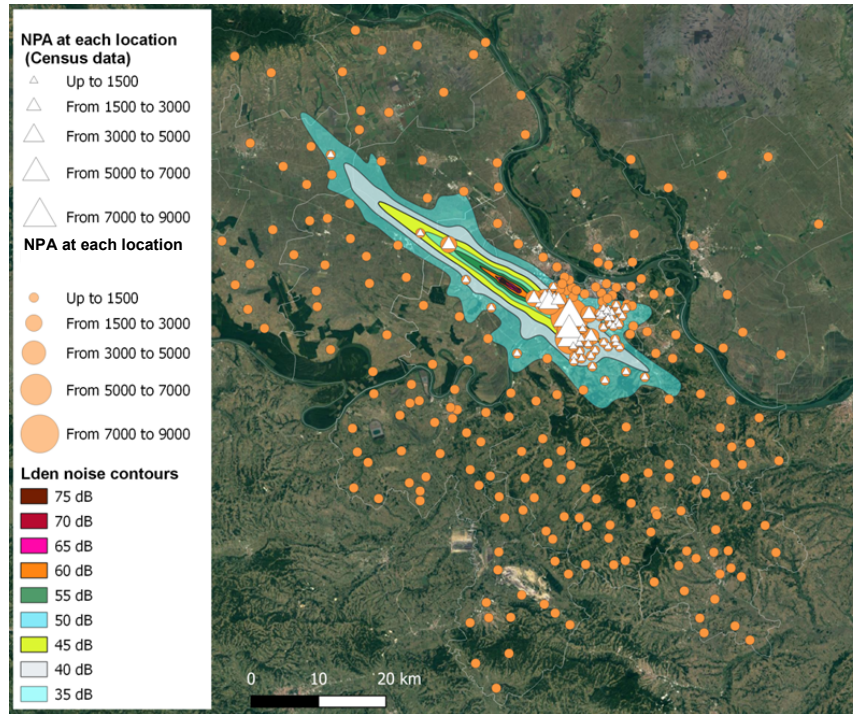


Fig. 4. Illustration of people at locations affected by noise with $L_{den} \geq 37$ dB.⁵

For a specific evaluation, the NPA at the locations covered by L_{den} noise contours ≥ 37 dB ($L_{den} \geq 37$ dB), as shown in Fig. 4, is estimated for both datasets and presented in Table 3. As seen from the table, the total NPA at these locations for the census data is 57,519, which is by 2.18% relatively higher (by 1,228 in absolute numbers) than the NPA based on the mobility data. The same situation is observed for the NPHA, where the difference is even higher, 5.24%. These observations show that even though people live inside the noise contours, some of them are still not annoyed by aircraft noise due to their mobility for working or studying purposes to locations far away from the airport.

Table 3. Number of people affected by noise at locations enclosed in $L_{den} \geq 37$ dB.

Criterion	Census data	Mobility data	Absolute difference	Relative difference
NPA	57,519	56,291	1,228	2.18%
NPHA	10,583	10,056	527	5.24%

Furthermore, in order to see how many people live outside the noise contours, but still experience noise impact, the NPA based on the mobility data at all locations is evaluated and presented in Table 4. The table shows that the total NPA is 60,265, more than 7.05% of whom

⁵ All the figures with the Google earth background are created using the open source software, QGIS (<https://qgis.org/en/site/>)

live outside the $L_{den} \geq 37$ dB. The same trend is observed for the total NPHA as well. This is easily explained when considering that people who live farther away from the airport may still work or study in the areas affected by aircraft noise.

Table 4. Number of people affected by noise based on mobility data.

Criterion	All locations	Only locations enclosed in $L_{den} \geq 37$ dB	Absolute difference	Relative difference
NPA	60,265	56,291	3,974	7.05%
NPHA	10,499	10,056	443	4.40%

Apart from the observations in the above tables, it is also noted that although the absolute difference of the total NPA between the census data and the mobility data is relatively small, the difference in the NPA at each location is rather significant, as shown in Fig. 5. Summarizing the relative difference at all locations compared to the NPA obtained by the census data can add up to 52.9%. This number indicates that there is a significant change in the number of people at each location during the day. For example, for location 220, the NPA based on the census data is 0, while the NPA based on the mobility data is 307; and for location 15, the NPA based on the census data is 8,286, whereas the NPA based on the mobility data is 7,936.

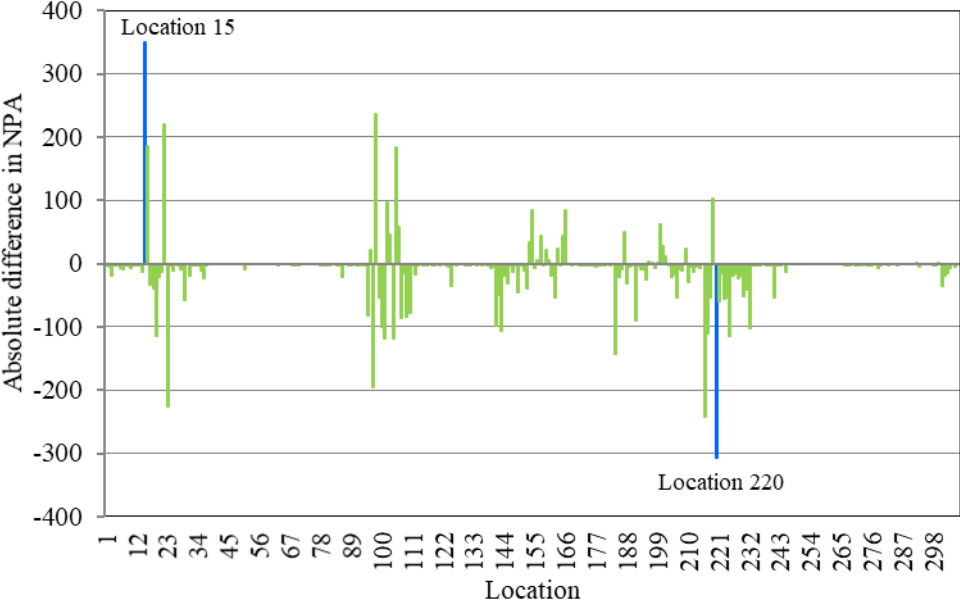


Fig. 5. Difference in the NPA between census data and daily mobility data at all locations.

For a better illustration of the daily mobility of population outside and inside the noise contours, movements at locations 15 and 220 are highlighted in Fig. 6 and Fig. 7, respectively. Fig. 6 shows that location 15 is located nearby the airport and enclosed in the noise contours of $L_{den} > 45$ dB. However, some of the people living at this location may experience less noise than others, as they work or study outside the area. Therefore, the total NPA calculated using the mobility data at this location is less than the NPA obtained by the census data. In contrast, an opposite situation can be observed for location 220 in Fig. 7. At this location, people who live outside the noise contours work or study at locations close to the airport, and hence they can experience significant noise impact. This explains the significant difference in the NPA at each location. In addition, the combined mobility at locations 15 and 220 explains why the difference in the total NPA between the census data and mobility data is relatively small.

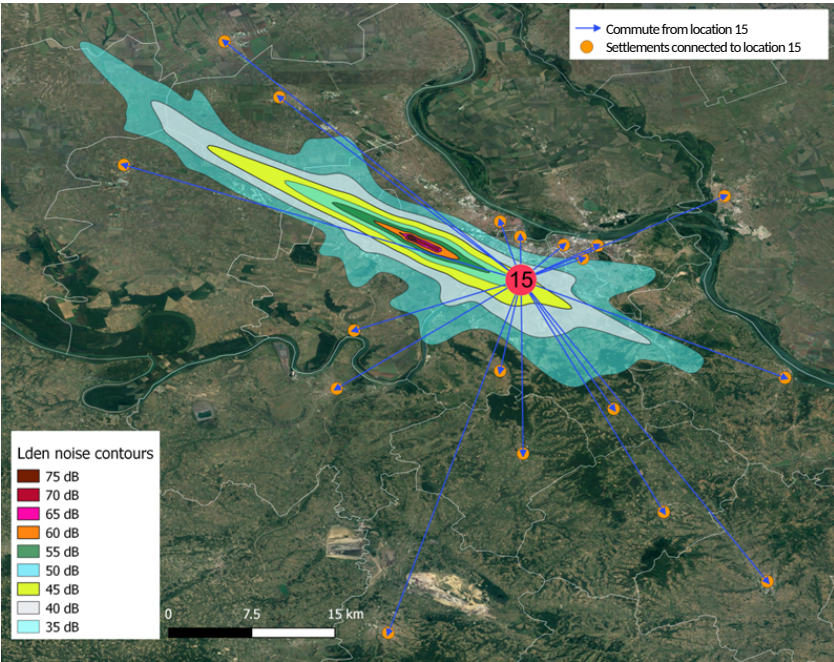


Fig. 6. Illustration of population at location 15 commuting outside $L_{den} \geq 37$ dB.

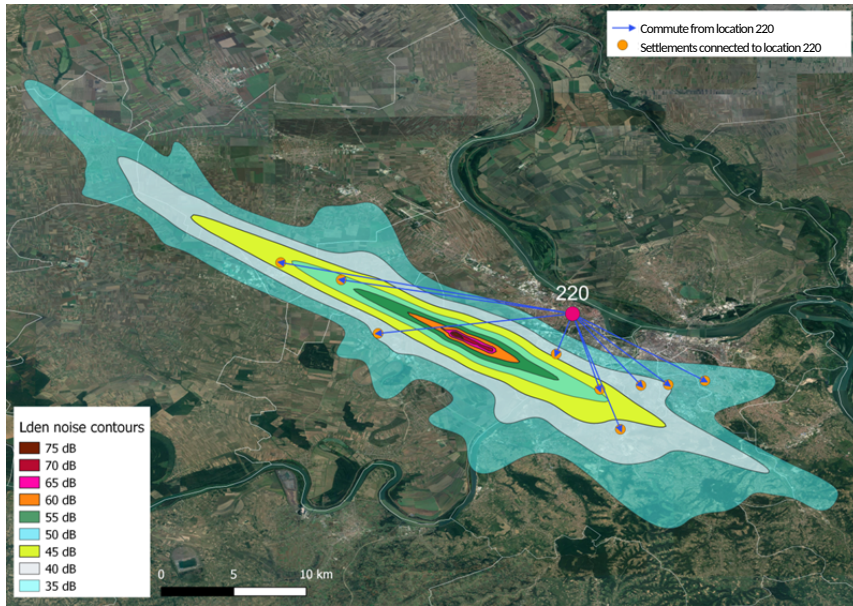


Fig. 7. Illustration of population at location 220 commuting inside $L_{den} \geq 37$.

To enable further examination of the influence that mobility data has on the number of people affected by aircraft noise during the night, the sleep disturbance criteria⁶ based on L_{night} recommended by WHO (2009) are also evaluated. These evaluations are provided in Table 5 and Table 6. As can be seen in the tables, the results obtained by using L_{night} also have the same trend as those obtained by using L_{den} even though during the night only the mobility of employees is considered. The explanation for this is that, according to the mobility data, groups of employees account for a significant portion in the mobility of the entire population, which is approximately twice as high as the groups of students. In addition, the noise impact during the night is more sensitive compared to the noise impact during the day and evening, and hence the percentage of disturbed people in each group is higher. Consequently, the mobility data also has a noticeable impact on the estimation of aircraft noise effects during the night.

Table 5. Number of people affected by noise at locations enclosed in L_{night} noise contour ≥ 30 dB.

Criterion	Census data	Mobility data	Absolute difference	Relative difference
NSD	33,750	32,601	1,149	3.52%
NHSD	21,103	20,381	722	3.54%

⁶ $\%SD = 13.714 - 0.807 L_{night} + 0.01555 (L_{night})^2$, and $\%HSD = 18.147 - 0.956 L_{night} + 0.01482 (L_{night})^2$, where $\%SD$ and $\%HSD$ are the percentages of the group of people whose sleep is disturbed and highly disturbed, respectively (WHO, 2009).

Table 6. Number of people affected by noise based on mobility data.

Criterion	All locations	Only locations enclosed in $L_{\text{night}} > 30$ dB	Absolute difference	Relative difference
NSD	33,809	32,601	1,208	3.71%
NHSD	21,138	20,381	757	3.71%

Based on the above considerations, it can be concluded that evaluation of aircraft noise effects is significantly dependent on population data (i.e., the census data and the mobility data). Although the difference in the total NPA between these data is small, the difference in the NPA at each individual location is considerable as a result of the daily mobility. From the perspective of air traffic assignment, variations of population at each location may lead to different optimal assignments compared to the case when solely census data are used. This is because, in order to reduce the noise impact, optimal allocation of aircraft should avoid locations at which most people are present during the day, rather than just their home addresses. Consequently, developing a methodology that is capable of creating optimal air traffic assignments based on mobility data is important and necessary. In the following section, therefore, the methodology presented in the previous sections is applied to solve the optimization problem of the air traffic assignment. The obtained results are analyzed and compared to those obtained by the reference case. Since the main aim of the research is to find optimal air traffic assignments for an entire day, only the noise criteria based on L_{den} are employed for the optimization problems and further analyses as well.

5.2. Air traffic assignment based on daily population mobility

The NSGA-II algorithm with a population size of 70 and a maximum generation (Gen.) of 1500 is applied to solve the multi-objective optimization problem stated in Section 2. The method is set with an intermediate crossover rate of 1.5 and the Gaussian mutation technique with a scale of 0.8 and a shrink of 0.1. All the simulations are run on an Intel Core i5, 8GB RAM desktop and MATLAB 2016b.

1358
1359
1360
1361
1362
1363
1364
1365
1366
1367
1368
1369
1370
1371
1372
1373
1374
1375
1376
1377
1378
1379
1380
1381
1382
1383
1384
1385
1386
1387
1388
1389
1390
1391
1392
1393
1394
1395
1396
1397
1398
1399
1400
1401
1402
1403
1404
1405
1406
1407
1408
1409
1410
1411
1412
1413
1414
1415
1416

Fig. 8 presents the optimal solutions obtained in comparison with that of the reference case. Fig. 8 shows that the proposed approach generates solutions which are much better than that of the reference case. When a population size of 70 is used, the Pareto front contains 70 distinct non-dominated solutions, and all of them dominate the reference case. Generally, all solutions will have the same weight of advantages, which spread from noise to fuel preference. Basically, decision makers can, therefore, choose any of the solutions based on their specific needs. However, to arrive at acceptable trade-off solutions from all of them, systematic analyses which are not considered in this study are needed. Therefore, only some representative solutions are chosen for further analyses later on.

In terms of computational cost, Fig. 9 shows the convergence history of results after specific generations with a particular amount of computational time. As seen from Fig. 9, the results seem to converge faster after 800 generations, and there are no significant improvements after 1200 generations. The computational cost (CPU time) is also recorded after each generation. To reach the last generation, the method spends almost 24 hours, mostly on calculating Eq. (3) for all 76,423 groups of people. Although the computation time is high, the algorithm is still applicable as the flight schedule can be obtained some days in advance. Moreover, with the development of powerful computers such as cluster and cloud computing, this issue can be addressed relatively easily.

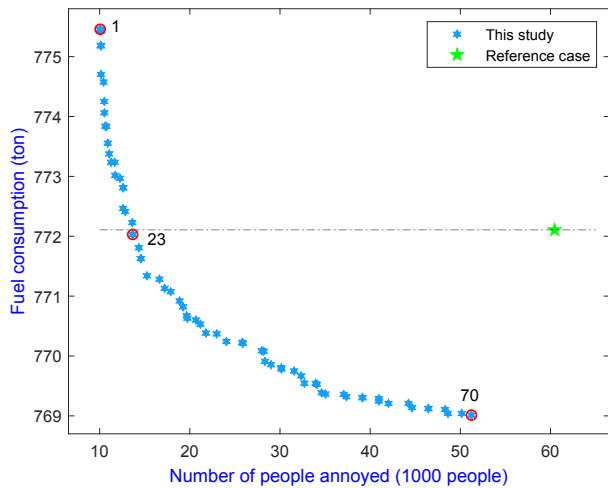


Fig. 8. Illustration of optimal solutions obtained by proposed method and reference case.

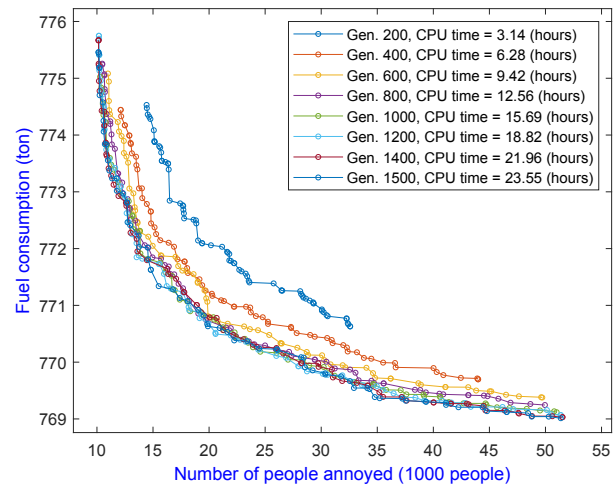


Fig. 9. Convergence history of optimal solutions.

For a better overview on the optimal solutions, three distinct solutions are selected, viz. 1, 23 and 70 as marked in Fig. 8, for further examinations. For these solutions, solutions 1 and 70 represent the minimum noise and fuel solutions, respectively, while solution 23 shows the same fuel consumption as the reference case, but has significantly better noise performance. Table 7 presents the objective values of the optimization problem (i.e., the total NPA and fuel consumption) and other concerned metrics obtained by the representative solutions and the reference case. At first glance, the table indicates that all the solutions have better NPA and NPHA in comparison with the reference case. Particularly, the total NPA of solutions 1, 23 and 70 are, respectively, 10,061, 13,663 and 51,234, and hence there is a reduction of 83.31%, 77.33% and 14.99%, respectively, compared to that of the reference case (with 60,265 people annoyed). Similar relative amounts of the reduction are observed for the NPHA as well.

Regarding the total fuel consumption and route length, due to focusing on the noise preference and hence assigning aircraft to routes which are farther away from the populated regions, solution 1 generates more fuel consumption than the reference case with an increase of 0.43%. However, even though it results in a significant reduction of the noise impact, solution 23 still keeps the total fuel consumption slightly lower than that of the reference case, whilst with a still smaller amount of noise impact reduction, solution 70 provides the best option for

fuel preference. The same trend is also recognized for the total route length, except for solution 23. For this solution, although the total fuel burn is slightly less than that of the reference case, the total route length is still higher. This can be explained by considering the distribution of aircraft types. Even though the total route length has increased, the route length of aircraft with higher fuel burn has reduced, leading to an overall reduction in fuel consumption.

It is also worth noting that the reason for the relatively small difference in fuel burn between the solutions and the reference case is due to the fact that departure and arrival operations account only for a small part of the flight. Nevertheless, there is an identifiable effect when considering the absolute values. Specifically, for solution 70, 3,093 kg can save airline companies around \$ 2,327 per day (with an average cost of jet-A1 fuel of \$ 86.1 per barrel⁷ in 2018), and generate roughly 9.7 ton of CO₂⁸ emission less.

Table 7. Comparison of different metrics of representative solutions and reference case.

Method	Case number	NPA	NPHA	Fuel consumption (kg)	Route length (NM)
This study	Solution 1	10,061	2,059	775,457	124,771
	<i>Absolute reduction</i>	-50,204*	-8,440	+3,351	+935
	<i>% reduction</i>	-83.31	-80.39	+0.43	+0.76
	Solution 23	13,663	2,308	772,030	124,139
	<i>Absolute reduction</i>	-46,602	-8,191	-76	+303
	<i>% reduction</i>	-77.33	-78.02	-0.01	+0.24
	Solution 70	51,234	8,892	769,013	123,391
	<i>Absolute reduction</i>	-9,031	-1607	-3,093	-445
	<i>% reduction</i>	-14.99	-15.31	-0.40	-0.36
	Reference case	60,265	10,499	772,106	123,836

*The signs “+” and “-” indicate increase and reduction compared to reference case, respectively.

Besides the evaluation of the criteria as given in Table 7, the number of people enclosed in specific L_{den} noise contours is also evaluated and provided in Table 8. A comparison of the representative solutions and the reference case shows that the number of people enclosed in the higher noise contours reduces for solutions with more emphasis on noise. This behavior is

⁷<https://www.iata.org/publications/economics/fuel-monitor/Pages/index.aspx> (assessed 19 January 2019)

⁸<https://www.icao.int/environmental-protection/Carbonoffset/Pages/default.aspx> (assessed 19 January 2019)

1535 expected, and it is comparable with the trends of the NPA and the NPHA in Table 7.

1536
1537
1538
1539 According to the formula in Eq. (2), it is obvious that the higher the value L_{den} each group of
1540 people is subjected to, the greater the number of people annoyed that group has.
1541
1542
1543

1544 Table 8. Comparison of the number of people enclosed in specific L_{den} noise contours.

Method	Noise band							
	< 40	[40-45)	[45-50)	[50-55)	[55-60)	[60-65)	> 65	
This study	Solution 1	1,987,474	59,075	5,326	10,860	7,211	0	0
	Solution 23	1,970,373	72,420	7,897	8,891	10,365	0	0
	Solution 70	1,654,134	241,767	125,281	41,829	3,684	3,251	0
Reference case	1,595,717	253,308	156,340	57,587	1,803	5,191	0	

1552 In order to perceive the difference between the optimal solutions in terms of air traffic
1553 assignments as well as the noise contours and the NPA at each location, the features of
1554 solutions 1, 23 and 70 are further analyzed. The optimal assignment of these solutions is
1555 shown in Table 9, which provides the number of aircraft assigned to each route, while their
1556 L_{den} noise contours and the NPA at each location are depicted in Fig. 10, Fig. 11 and Fig. 12,
1557 respectively.
1558
1559
1560
1561
1562
1563
1564

1565 Table 9 shows that the distribution of aircraft over the routes between the solutions is
1566 rather different. For example, for route 5, solution 1 has 31 operations, and solution 23 has 24
1567 operations, while solution 70 has only 11 operations. On the other hand, for route 27, there is
1568 no operation from solution 1, but 5 operations from solution 23, and 15 operations from
1569 solution 70. More specifically, solution 1 tends to send more aircraft to route 5 as it is
1570 positioned farther away from the populated regions. However, this selection will result in
1571 longer routes for aircraft that have their final destination in a different direction, and it will
1572 consequently cost more fuel. Meanwhile, solution 70 tends to directly send aircraft along
1573 routes in the direction of their final destinations disregarding populated areas, and hence
1574 leading to an increase in the NPA. Solution 23 tends to balance between noise and fuel
1575 concerns, and hence its distribution falls in the middle of those of solutions 1 and 70.
1576
1577
1578
1579
1580
1581
1582
1583
1584
1585
1586
1587
1588
1589
1590
1591
1592
1593

The above examinations are even more apparent when looking at Fig. 10, Fig. 11 and Fig. 12. In these figures, the variation in the NPA between the solutions can be observed in the region that is highlighted by the white dotted line. In fact, for solution 1, there are only 3 locations which have people affected by noise due to their daily mobility, while 8 locations are recognized in solution 23, and up to 18 locations in solution 70. Moreover, upon a closer look at the legends on the figures, it is also noted that the scale of the NPA at each location of these solutions is rather different. A further distinction of this comparison can be clearly recognized in Fig. 13. It can be seen from the figure that the difference of the NPA occurs not only at the highlighted region, but also at other locations.

Table 9. Comparison of optimal route assignments of three representative solutions.

Route number	Number of operation			Route number (continued)	Number of operation		
	Solution 1	Solution 23	Solution 70		Solution 1	Solution 23	Solution 70
1	0	3	7	15	4	10	3
2	0	1	3	16	10	7	1
3	0	0	2	17	8	2	5
4	0	2	19	18	9	7	7
5	31	24	11	19	12	12	10
6	0	1	0	20	24	26	22
7	3	11	9	21	2	7	9
8	20	13	12	22	16	8	6
9	19	15	15	23	0	1	9
10	23	19	18	24	0	2	1
11	0	6	7	25	0	0	0
12	10	6	4	26	0	1	4
13	3	8	2	27	0	5	15
14	26	23	19				

1653
1654
1655
1656
1657
1658
1659
1660
1661
1662
1663
1664
1665
1666
1667
1668
1669
1670
1671
1672
1673
1674
1675
1676
1677
1678
1679
1680
1681
1682
1683
1684
1685
1686
1687
1688
1689
1690
1691
1692
1693
1694
1695
1696
1697
1698
1699
1700
1701
1702
1703
1704
1705
1706
1707
1708
1709
1710
1711

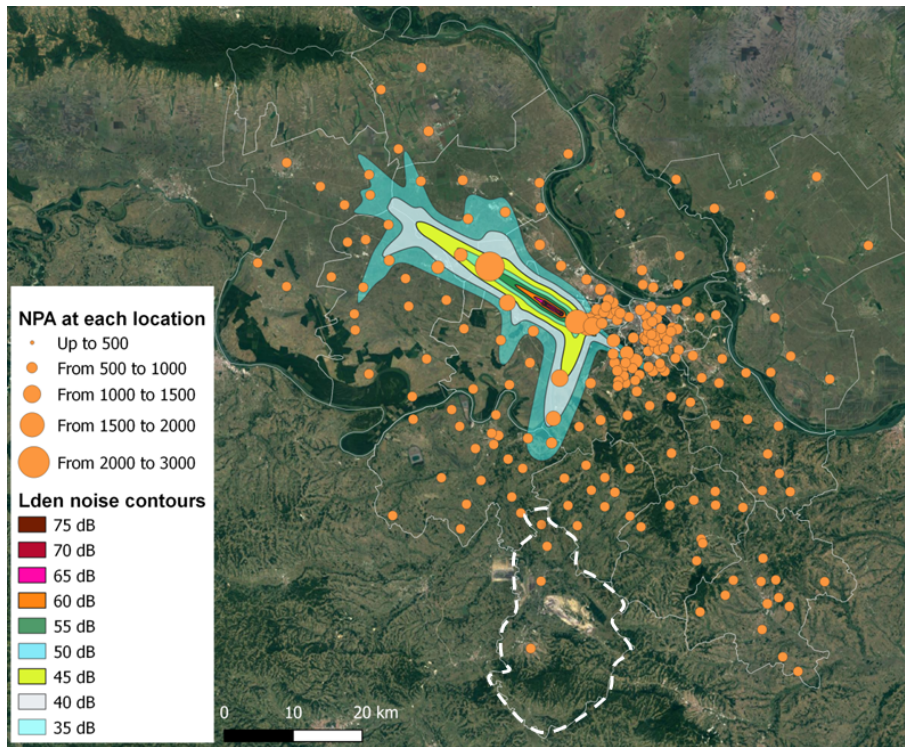


Fig. 10. Illustration of NPA at each location (solution 1).

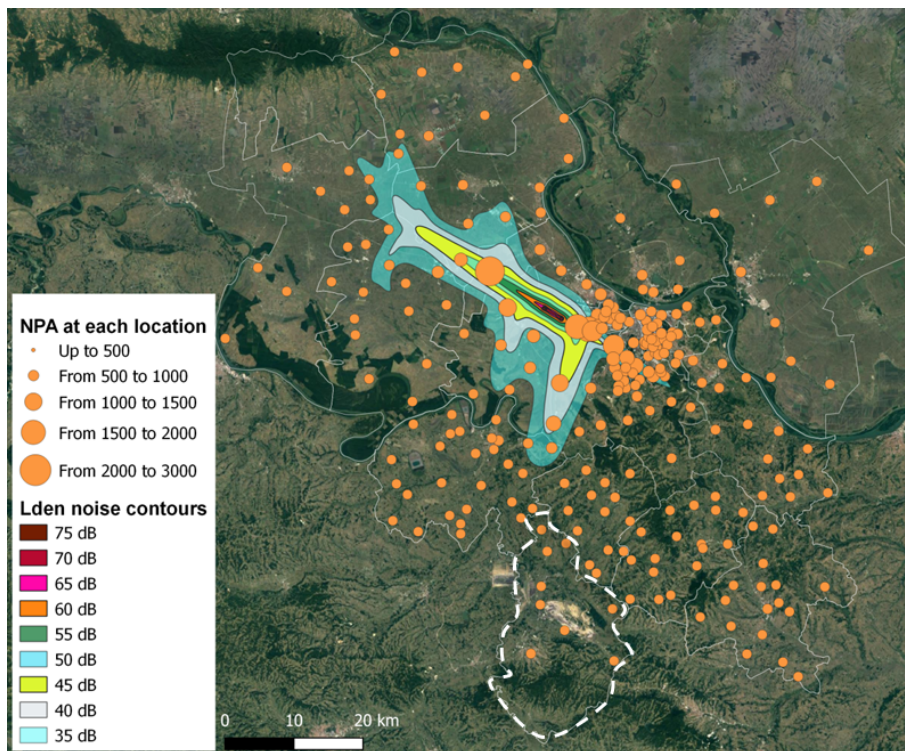


Fig. 11. Illustration of NPA at each location (solution 23).

1712
1713
1714
1715
1716
1717
1718
1719
1720
1721
1722
1723
1724
1725
1726
1727
1728
1729
1730
1731
1732
1733
1734
1735
1736
1737
1738
1739
1740
1741
1742
1743
1744
1745
1746
1747
1748
1749
1750
1751
1752
1753
1754
1755
1756
1757
1758
1759
1760
1761
1762
1763
1764
1765
1766
1767
1768
1769
1770

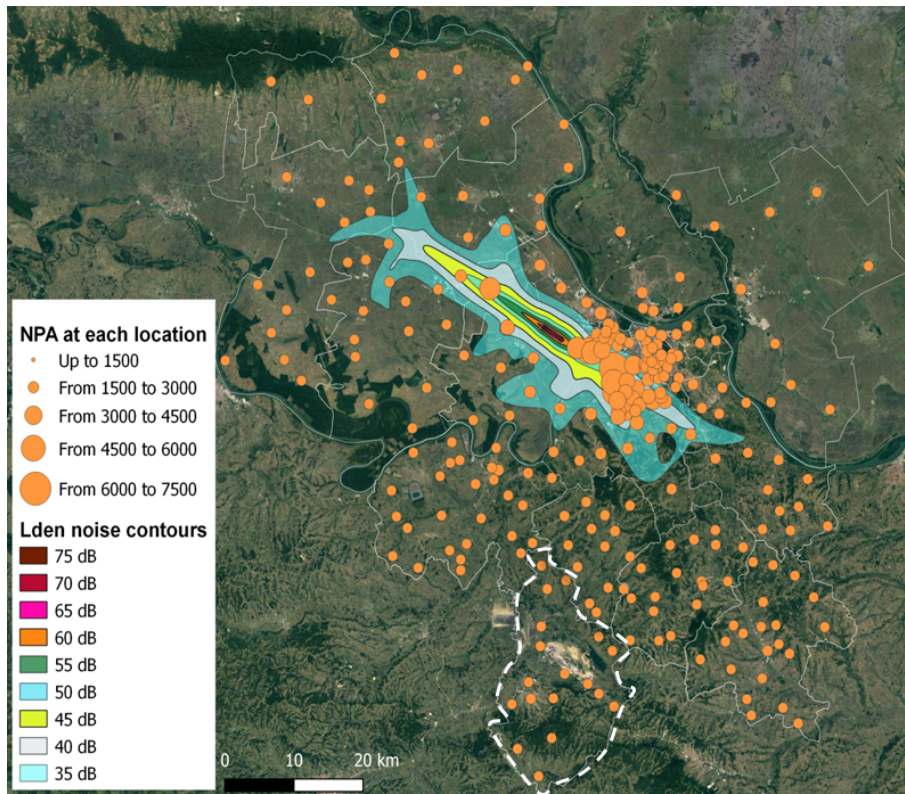


Fig. 12. Illustration of NPA at each location (solution 70).

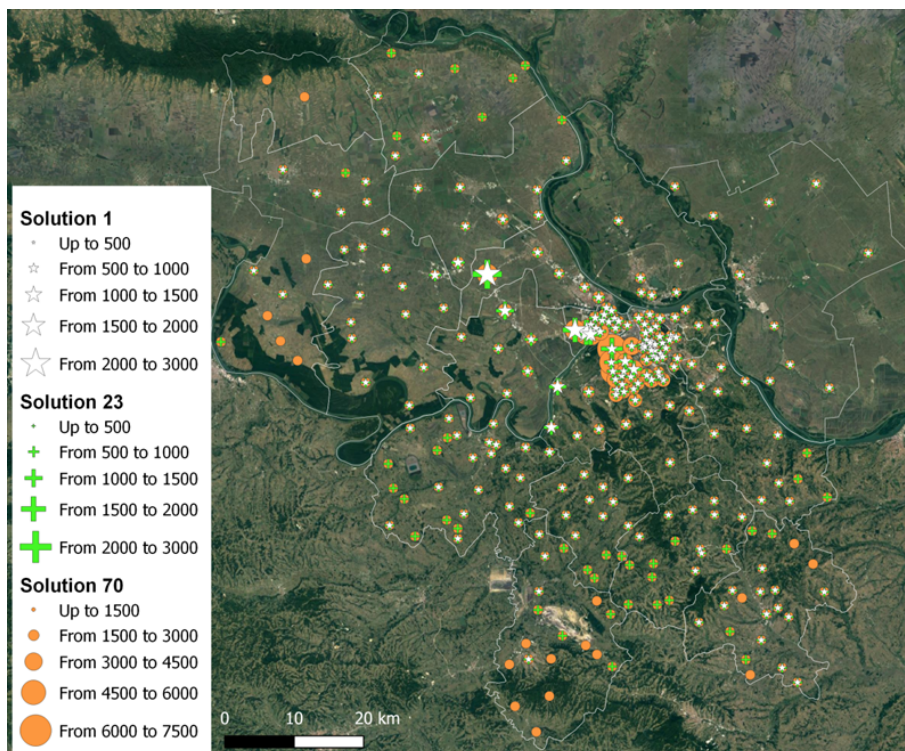


Fig. 13. Comparison of NPA between solutions 1, 23 and 70 at each location.

5.3. Evaluation of optimal assignments based on census data and mobility data

As noted earlier at the end of Section 5.1, the variation of population at each location between the census data and the mobility data during the day may lead to a change in the optimal assignments obtained by these data as well. Therefore, to estimate this concern for the applied case study, the air traffic assignment problem based on the census data is also performed. The obtained results are then compared with those based on the mobility data.

Fig. 14 and Fig. 15 compare the objective functions (i.e., the total NPA and fuel consumption) for both datasets. In Fig. 14, the comparison is made based on the optimal assignments using the census data, whereas the comparison in Fig. 15 is made based on the optimal assignments using the mobility data. Both figures indicate that there is a small difference in the NPA between solutions evaluated based on the difference of datasets. Note that since the assignments for each comparison in each figure are the same, consequently the fuel consumption will be the same regardless of the data used. The variation increases from solution 1 to solution 70. Therefore, there is a difference in their optimal assignments. The variation of the optimal assignments between both sets of solutions can be readily explained. As mentioned earlier in Section 5.1, due to the daily mobility, the population at each location changes at different times of the day. Therefore, to reduce the noise impact, the optimal assignments should be changed as well. It should also be noted that although the change in the total NPA between the census data and the mobility data is relatively small, the change of the NPA at each location can be rather large, which has been discussed earlier in Section 5 as well.

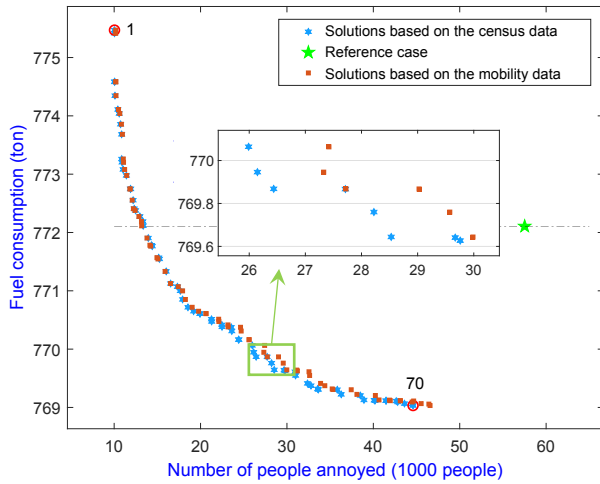


Fig. 14. Comparison based on the optimal assignments using the census data.

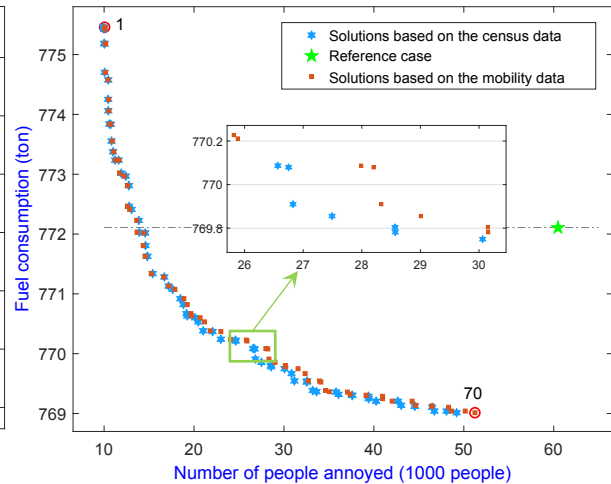


Fig. 15. Comparison based on the optimal assignments using the mobility data.

In order to further analyze the difference above, the optimal assignments of two representative solutions, *viz.* 1 and 70 obtained by using both datasets are extracted and presented in Table 10. This table shows that the optimal assignments are slightly different. For example, for route 9 of solution 1, the difference in the number of operations is 6, whilst for route 15 of solution 70 it is 3. It should be also noted that although the number of operations on each route for both datasets used is more or less the same, the distribution of aircraft types also contributes to the variation in the NPA.

To get a better insight into the effect of the change in the optimal assignments, the resulting L_{den} noise contours for these assignments are illustrated in Fig. 16 and Fig. 17, for solutions 1 and 70, respectively. As seen in the figures, the noise contours are rather different, especially for solution 70.

1889
1890
1891
1892
1893
1894
1895
1896
1897
1898
1899
1900
1901
1902
1903
1904
1905
1906
1907
1908
1909
1910
1911
1912
1913
1914
1915
1916
1917
1918
1919
1920
1921
1922
1923
1924
1925
1926
1927
1928
1929
1930
1931
1932
1933
1934
1935
1936
1937
1938
1939
1940
1941
1942
1943
1944
1945
1946
1947

Table 10. Comparison of the optimal route assignments of solutions 1 and 70 based on both data.

Route number	Number of operation				Route number (continued)	Number of operation			
	Solution 1		Solution 70			Solution 1		Solution 70	
	Census data	Mobility data	Census data	Mobility data		Census data	Mobility data	Census data	Mobility data
1	0	0	6	7	15	5	4	0	3
2	0	0	5	3	16	14	10	2	1
3	0	0	1	2	17	5	8	2	5
4	0	0	16	19	18	10	9	10	7
5	28	31	12	11	19	10	12	10	10
6	0	0	0	0	20	21	24	21	22
7	6	3	8	9	21	3	2	7	9
8	17	20	12	12	22	15	16	9	6
9	25	19	14	15	23	0	0	6	9
10	22	23	17	18	24	0	0	3	1
11	0	0	9	7	25	0	0	0	0
12	8	10	7	4	26	0	0	3	4
13	3	3	2	2	27	0	0	16	15
14	28	26	22	19					

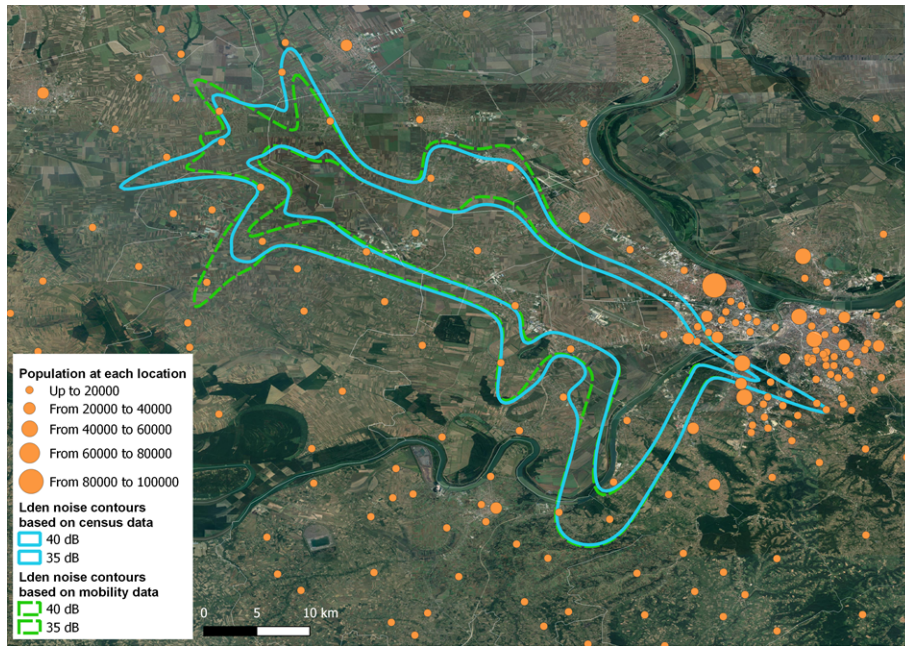


Fig. 16. Comparison of L_{den} noise contours based on census data and on daily mobility data (solution 1).

1948
1949
1950
1951
1952
1953
1954
1955
1956
1957
1958
1959
1960
1961
1962
1963
1964
1965
1966
1967
1968
1969
1970
1971
1972
1973
1974
1975
1976
1977
1978
1979
1980
1981
1982
1983
1984
1985
1986
1987
1988
1989
1990
1991
1992
1993
1994
1995
1996
1997
1998
1999
2000
2001
2002
2003
2004
2005
2006

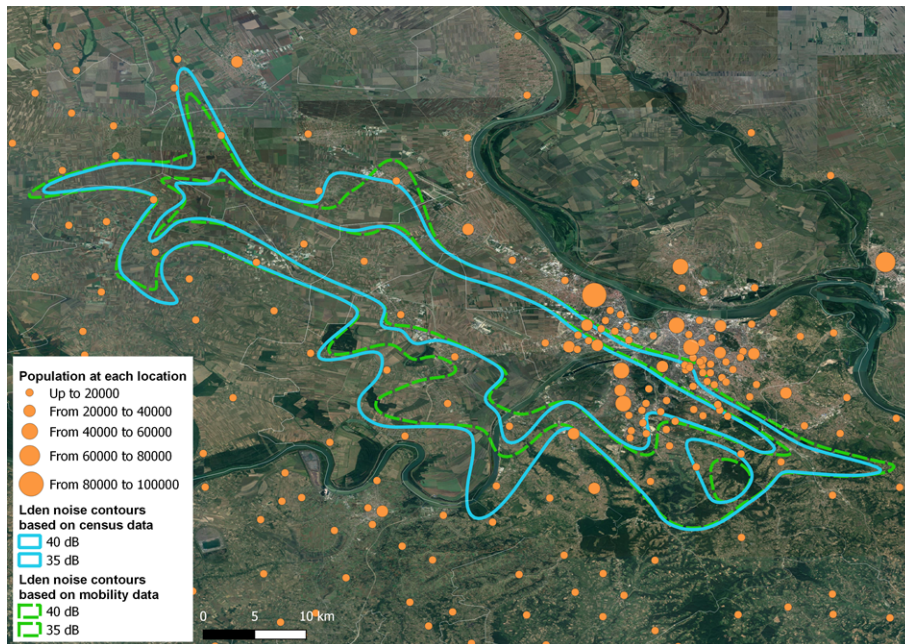


Fig. 17. Comparison of L_{den} noise contours based on census data and on daily mobility data (solution 70).

6. Conclusions and future work

This paper introduces a new air traffic assignment model which is capable of taking the daily mobility of a city's population into account, in addition to having a **acceptable** trade-off between conflicting objectives (i.e., the NPA and fuel consumption). Furthermore, substantial efforts have been invested **to investigate the influence of the data used on the evaluation of aircraft noise effects**. Then, the optimal solutions of the air traffic assignment based on the mobility data are obtained and compared with that of the reference case and those based on the census data. The following conclusions can be drawn from this work:

- 1) The evaluation of aircraft noise impact is influenced by the daily population mobility data used. Specifically, **when the census data are used**, only people who live inside the noise contours get annoyed, whereas it has been found that people living outside the noise contours could be annoyed when the mobility data are used. Moreover, not all of the annoyed people suggested from the census data will actually be annoyed if their daily mobility is taken into account. Although the total NPA obtained by using either

2007
2008
2009 census data or mobility data is very similar, the NPA at each location is significantly
2010
2011 different.

- 2012
2013
2014 2) Compared to the reference case herein, the proposed methodology can generate
2015 solutions that are much improved in terms of both the total NPA and fuel
2016 consumption. Even with a small change in the total fuel consumption, the method can
2017
2018 still offer a solution which can reduce the total NPA up to 77%. Furthermore, the
2019
2020 proposed approach also provides a wide range of solutions with different benefits to
2021
2022 either noise or fuel burn, and these solutions can serve as a valuable input for
2023
2024 authorities and policymakers in their decision making.
- 2025
2026
2027
2028 3) The optimal assignments obtained by both datasets are different since there is a
2029
2030 significant difference in the number of people at each location during the day. The
2031
2032 evaluation thereof also indicates that the difference in the optimal assignments is
2033
2034 rather dependent on the case study under consideration, and on whether the variation
2035
2036 of population at each location is significant or not, relative also to the population
2037
2038 distribution and airport layout.

2039
2040 Some inherent limitations of the work which have not yet been considered in this study
2041
2042 are also worth mentioning. First, the mobility data are considered only for three distinct
2043
2044 groups of people, including students, employees and people staying at home. This assumption
2045
2046 may lead to variations in optimal assignments as a result of the change of population at each
2047
2048 location during the day if other types of mobility are also considered. Further research should
2049
2050 also investigate to a larger extent the assumption regarding the allocation of employees and
2051
2052 students to shifts. Second, for the air traffic assignment model, only the feasible options for
2053
2054 each operation are considered, while the runway and airspace capacity (e.g., aircraft
2055
2056 sequencing), which can lead to delay of flights, are not yet considered. This model could be
2057
2058 regarded as pre-tactical and intended to be used for planning purposes since it takes into
2059
2060
2061
2062
2063
2064
2065

2066
2067
2068 account forecasted data for the whole day and it is not resistant to any disruption in the pre-
2069 defined timetable. In order to **render it** suitable for tactical use in real-time operations,
2070 changes in runway in use, aircraft changes as well as delays should be included in the model.
2071
2072 Therefore, these issues will be dealt with in further work. Furthermore, by using the mobility
2073 data, changes in population at sensitive regions such as schools and hospitals, can be
2074 recognized. These more detailed mobility data can help develop more realistic, applied
2075 solutions in terms of applying more complex fair weightings for each different category.
2076
2077
2078
2079
2080
2081
2082
2083

2084 **Acknowledgments**

2085
2086

2087 This research is supported by the Ministry of Science and Technological Development of the
2088 Republic of Serbia and represents a part of the project named “A support to sustainable
2089 development of the Republic of Serbia's air transport system” (TR36033). The authors would
2090 like to express their gratitude to the Statistical Office of the Republic of Serbia for providing
2091 the data regarding daily mobility. **The authors would also like to thank the editor and**
2092 **anonymous reviewers for their constructive, helpful and valuable comments and suggestions.**
2093
2094
2095
2096
2097
2098
2099
2100

2101 **References**

2102
2103

- 2104 Abouei, M., Taghi, M., 2018. Multi-objective optimization of reliability – redundancy allocation problem with
2105 cold-standby strategy using NSGA-II. Reliability Engineering and System Safety 172, 225–238.
2106 doi:10.1016/j.ress.2017.12.019
- 2107 Alikar, N., Mohsen, S., Ari, R., Ghazilla, R., Tavana, M., 2017. Application of the NSGA-II algorithm to a
2108 multi-period inventory- redundancy allocation problem in a series-parallel system 160, 1–10.
- 2109 AzB-08, 2008. Anleitung zur Berechnung von Lärmschutzbereichen nach dem Gesetz zum Schutz gegen
2110 Fluglärm vom 19. November 2008 in: 1. Verordnung zur Durchführung des Gesetzes zum Schutz gegen
2111 Fluglärm (1. FlugLSV) vom 27.12.2008, BGBl. I S.2980.
- 2112 **Coelho, J.L.B., Vogiatzis, K., Licitra, G., 2011. The CNOSSOS-EU initiative: A framework for road, railway,
2113 aircraft and industrial noise modelling for strategic noise mapping in EU Member States, in: 18th
2114 International Congress on Sound and Vibration 2011, ICSV 2011. pp. 789–795.**
- 2115 Deb, K., Pratap, A., Agarwal, S., Meyarivan, T., 2002. A fast and elitist multiobjective genetic algorithm:
2116 NSGA-II. IEEE Transactions on Evolutionary Computation 6, 182–197. doi:10.1109/4235.996017
- 2117 EC, 2002. Directive 2002/49/EC of the European parliament and the Council of 25 June 2002 relating to the
2118 assessment and management of environmental noise. Official Journal of the European Communities.
- 2119 ECAC, 2016. ECAC.CEAC Doc 29 4th Edition Report on Standard Method of Computing Noise Contours
2120 around Civil Airports Volume 1: Applications Guide 1.
- 2121 **European Commission, 2016. Evaluation of Directive 2002/49/EC relating to the assessment and management of
2122 environmental noise. Executive Summary. Brussels, Belgium. doi:10.1007/s10875-005-4080-8**
- 2123 European Environment Agency (EEA), 2010. Good practice guide on noise exposure and potential health
2124

- effects, n.d. , in: EEA Technical Report.
- Federal Aviation Administration, 2007. INM v7.0 User's Guide.
- Frair, L., 1984. Airport noise modelling and aircraft scheduling so as to minimize community annoyance. *Applied Mathematical Modelling* 8, 271–281. doi:10.1016/0307-904X(84)90162-8
- Ganić, E., Babić, O., Čangalović, M., Stanojević, M., 2018. Air traffic assignment to reduce population noise exposure using activity-based approach. *Transportation Research Part D: Transport and Environment* 63, 58–71. doi:10.1016/j.trd.2018.04.012
- Ganić, E., Radojević, M., Babić, O., 2016. Influence of aircraft noise on quiet areas, in: 25th International Conference Noise and Vibration Proceeding of Papers. University of Niš, Faculty of Occupational Safety, Tara, Serbia, pp. 47–53.
- Glekas, I., Vogiatzis, K., Antoniadis, C., 2016. Strategic noise mapping & action plans for the international airports of Larnaca & Pafos in Cyprus, in: The 23rd International Congress on Sound and Vibration. Athens, Greece.
- Hartjes, S., Visser, H., 2016. Efficient trajectory parameterization for environmental optimization of departure flight paths using a genetic algorithm. *Proceedings of the Institution of Mechanical Engineers, Part G: Journal of Aerospace Engineering* 0, 1–9. doi:10.1177/0954410016648980
- Hatzopoulou, M., Miller, E.J., 2010. Linking an activity-based travel demand model with traffic emission and dispersion models: Transport's contribution to air pollution in Toronto. *Transportation Research Part D: Transport and Environment* 15, 315–325. doi:10.1016/j.trd.2010.03.007
- Heblij, S.J., Hanenburg, V., Wijnen, R.A.A., Visser, H.G., 2007. Development of a Noise Allocation Planning Tool, in: 45th AIAA Aerospace Sciences Meeting and Exhibit. American Institute of Aeronautics and Astronautics, Reno, Nevada, pp. 1–7. doi:10.2514/6.2007-1335
- Ho-Huu, Vinh, Hartjes, S., Geijselaers, L.H., Visser, H.G., Curran, R., 2018. Optimization of noise abatement aircraft terminal routes using a multi-objective evolutionary algorithm based on decomposition. *Transportation Research Procedia* 29, 157–168. doi:10.1016/j.trpro.2018.02.014
- Ho-Huu, V., Hartjes, S., Visser, H., Curran, R., 2017. An Efficient Application of the MOEA/D Algorithm for Designing Noise Abatement Departure Trajectories. *Aerospace* 4, 54. doi:10.3390/aerospace4040054
- Ho-Huu, V., Hartjes, S., Visser, H.G., Curran, R., 2018. Integrated design and allocation of optimal aircraft departure routes. *Transportation Research Part D: Transport and Environment* 63, 689–705. doi:10.1016/j.trd.2018.07.006
- Isermann, U., Vogelsang, B., 2010. AzB and ECAC Doc.29—Two best-practice European aircraft noise prediction models. *Noise Control Engineering Journal* 58, 455–461. doi:10.3397/1.3455442
- Jiang, S., Ferreira, J., Gonzalez, M.C., 2017. Activity-Based Human Mobility Patterns Inferred from Mobile Phone Data: A Case Study of Singapore. *IEEE Transactions on Big Data* 3, 208–219. doi:10.1109/TBDATA.2016.2631141
- Kaddoura, I., Kröger, L., Nagel, K., 2017. An activity-based and dynamic approach to calculate road traffic noise damages. *Transportation Research Part D: Transport and Environment* 54, 335–347. doi:10.1016/j.trd.2017.06.005
- Kaddoura, I., Kröger, L., Nagel, K., 2016. User-specific and Dynamic Internalization of Road Traffic Noise Exposures. *Networks and Spatial Economics*. doi:10.1007/s11067-016-9321-2
- Kephalopoulos, S., Paviotti, M., Anfosso-lédée, F., Maercke, D. Van, Shilton, S., Jones, N., 2014. Science of the Total Environment Advances in the development of common noise assessment methods in Europe : The CNOSSOS-EU framework for strategic environmental noise mapping. *Science of the Total Environment*, The 482–483, 400–410. doi:10.1016/j.scitotenv.2014.02.031
- Kuiper, B.R., Visser, H.G., Heblij, S.J., 2013. Efficient use of an allotted airport annual noise budget through minimax optimization of runway allocations. *Proceedings of the Institution of Mechanical Engineers, Part G: Journal of Aerospace Engineering* 227, 1021–1035. doi:10.1177/0954410012447767
- Marais, K.B., Reynolds, T.G., Uday, P., Muller, D., Lovegren, J., Dumont, J.-M., Hansman, R.J., 2013. Evaluation of potential near-term operational changes to mitigate environmental impacts of aviation. *Proceedings of the Institution of Mechanical Engineers, Part G: Journal of Aerospace Engineering* 227, 1277–1299. doi:10.1177/0954410012454095
- Martínez-Puras, A., Pacheco, J., 2016. MOAMP-Tabu search and NSGA-II for a real Bi-objective scheduling-routing problem. *Knowledge-Based Systems* 112, 92–104. doi:10.1016/j.knosys.2016.09.001
- Netjasov, F., 2008. A Model of Air Traffic Assignment as a Measure for Mitigating Noise at Airports: The Zurich Airport Case. *Transportation Planning and Technology* 31, 487–508. doi:10.1080/03081060802364448
- Nibourg, J.M., Hesselink, H.H., Vijver, Y.A.J.R. van de, 2012. Environment-Aware Runway Allocation Advice System (No. NLR-TP-2008-506). Amsterdam, the Netherlands.
- Novák, J., Sýkora, L., 2007. A City in Motion: Time-Space Activity and Mobility Patterns of Suburban Inhabitants and the Structuration of the Spatial Organization of the Prague Metropolitan Area. *Geografiska*

- Annaler, Series B: Human Geography 89, 147–168. doi:10.1111/j.1468-0467.2007.00245.x
- Ott, W.R., 1982. Concepts of human exposure to air pollution. *Environment International* 7, 179–196. doi:[https://doi.org/10.1016/0160-4120\(82\)90104-0](https://doi.org/10.1016/0160-4120(82)90104-0)
- Prats, X., Puig, V., Quevedo, J., 2011. A multi-objective optimization strategy for designing aircraft noise abatement procedures. Case study at Girona airport. *Transportation Research Part D: Transport and Environment* 16, 31–41. doi:10.1016/j.trd.2010.07.007
- Srinivas, N., Deb, K., 1994. Multiobjective Optimization Using Nondominated Sorting in Genetic Algorithms. *Evol. Comput.* 2, 221–248. doi:10.1162/evco.1994.2.3.221
- Statistical Office of the Republic of Serbia, 2013. 2011 Census of Population, Households and Dwellings in the Republic of Serbia. Daily Migrants (data by municipalities/cities). Statistical Office of the Republic of Serbia, Belgrade, Serbia.
- Thang, L.-D., Ho-Huu, V., Hung, N.-Q., 2018. Multi-objective optimal design of magnetorheological brakes for motorcycling application considering thermal effect in working process. *Smart Materials and Structures* 27, 75060.
- Torres, R., Chaptal, J., Bès, C., Hiriart-Urruty, J.-B., 2011. Optimal , Environmentally Friendly Departure Procedures for Civil Aircraft. *Journal of Aircraft* 48, 11–23. doi:10.2514/1.C031012
- Visser, H.G., 2005. Generic and site-specific criteria in the optimization of noise abatement trajectories. *Transportation Research Part D: Transport and Environment* 10, 405–419. doi:10.1016/j.trd.2005.05.001
- Visser, H.G., Wijnen, R.A.A., 2001. Optimization of Noise Abatement Departure Trajectories. *Journal of Aircraft* 38, 620–627. doi:10.2514/2.2838
- Vo-Duy, T., Duong-Gia, D., Ho-Huu, V., Vu-Do, H.C., Nguyen-Thoi, T., 2017. Multi-objective optimization of laminated composite beam structures using NSGA-II algorithm. *Composite Structures* 168, 498–509. doi:10.1016/j.compstruct.2017.02.038
- Vogiatzis, K., 2014. Assessment of environmental noise due to aircraft operation at the Athens International Airport according to the 2002/49/EC Directive and the new Greek national legislation. *Applied Acoustics* 84, 37–46. doi:10.1016/j.apacoust.2014.02.019
- Vogiatzis, K., 2012. Airport environmental noise mapping and land use management as an environmental protection action policy tool. The case of the Larnaka International Airport (Cyprus). *The Science of the total environment* 424, 162–73. doi:10.1016/j.scitotenv.2012.02.036
- Vogiatzis, K., Remy, N., 2014. Strategic Noise Mapping of Herakleion: The Aircraft Noise Impact as a factor of the Int. Airport relocation. *Noise Mapping* 1, 15–31. doi:10.2478/noise-2014-0003
- Wang, H., Fu, Y., Huang, M., Huang, G.Q., Wang, J., 2017. Computers & Industrial Engineering A NSGA-II based memetic algorithm for multiobjective parallel flowshop scheduling problem. *Computers & Industrial Engineering* 113, 185–194. doi:10.1016/j.cie.2017.09.009
- WHO, 2009. Night Noise Guidelines for Europe.
- Winther, M., Rypdal, K., Sørensen, L., Kalivoda, M., Bukovnik, M., Kilde, N., Lauretis, R. De, Falk, R., Romano, D., Deransy, R., Box, L., Carbo, L., Meana, N.T., Whiteley, M., 2017. EMEP/EEA air pollutant emission inventory guidebook 2016 – Update July 2017 - 1.A.3.a, 1.A.5.b Aviation. European Environment Agency.
- Zachary, D.S., Gervais, J., Leopold, U., 2010. Multi-impact optimization to reduce aviation noise and emissions. *Transportation Research Part D: Transport and Environment* 15, 82–93. doi:10.1016/j.trd.2009.09.005
- Zachary, D.S., Gervais, J., Leopold, U., Schutz, G., Huck, V.S.T., Braun, C., 2011. Strategic Planning of Aircraft Movements with a Three-Cost Objective. *Journal of Aircraft* 48, 256–264. doi:10.2514/1.C031090
- Zhang, M., Filippone, A., Bojdo, N., 2018. Multi-objective optimisation of aircraft departure trajectories. *Aerospace Science and Technology* 79, 37–47. doi:10.1016/j.ast.2018.05.032