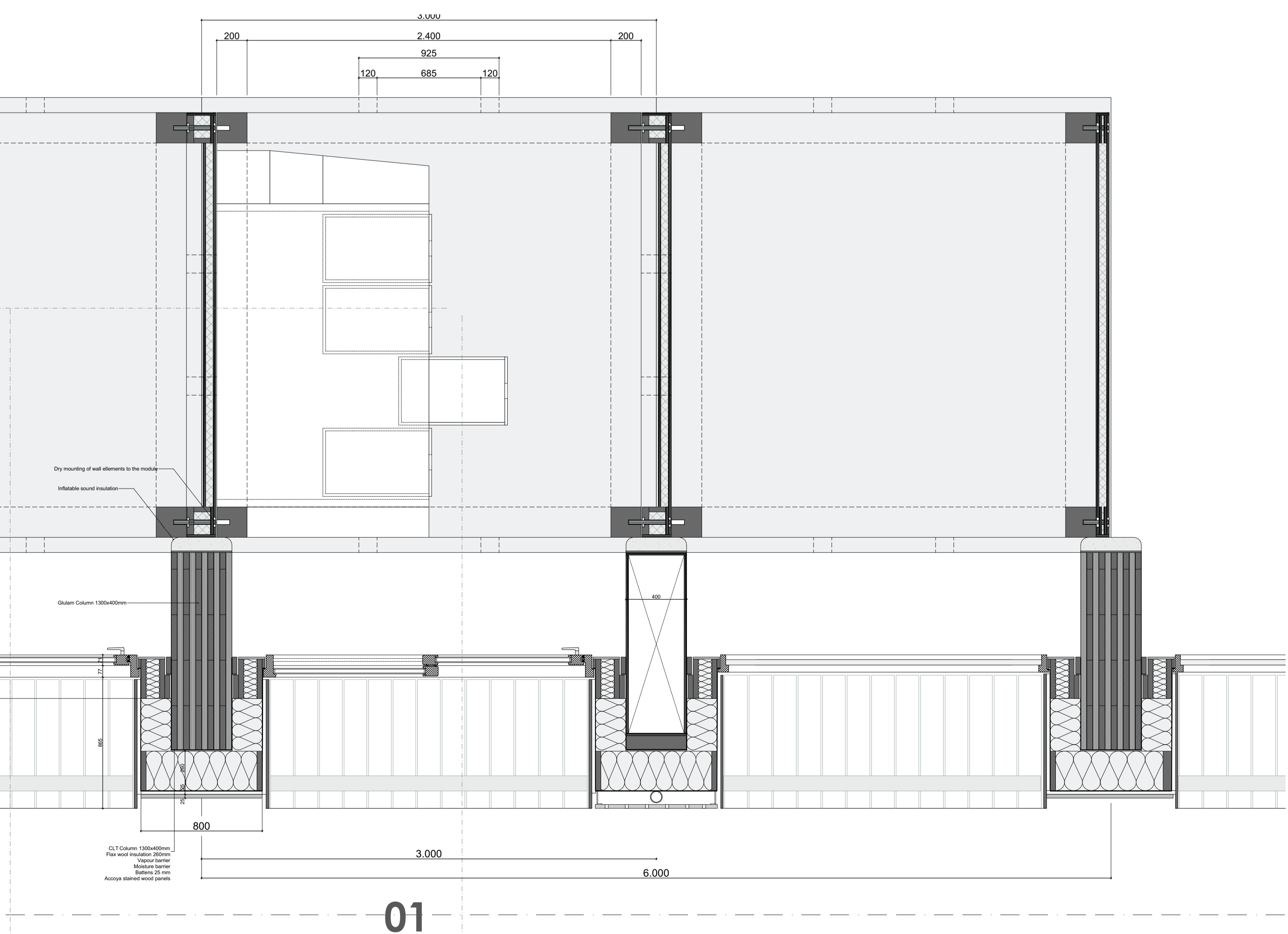


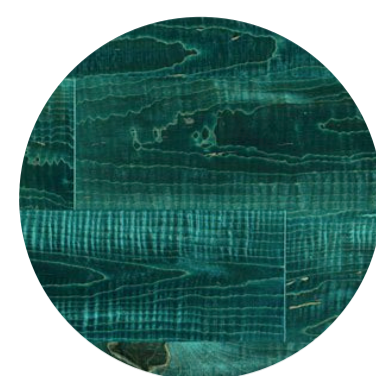


Horizontal Fragment
Scale 1:20



01

Accoya Shou sugi Ban
Burned and stained hardwood



Facade panels
Pegboard for personal infill



Flaxwool
Insulation d 260mm Rc 7

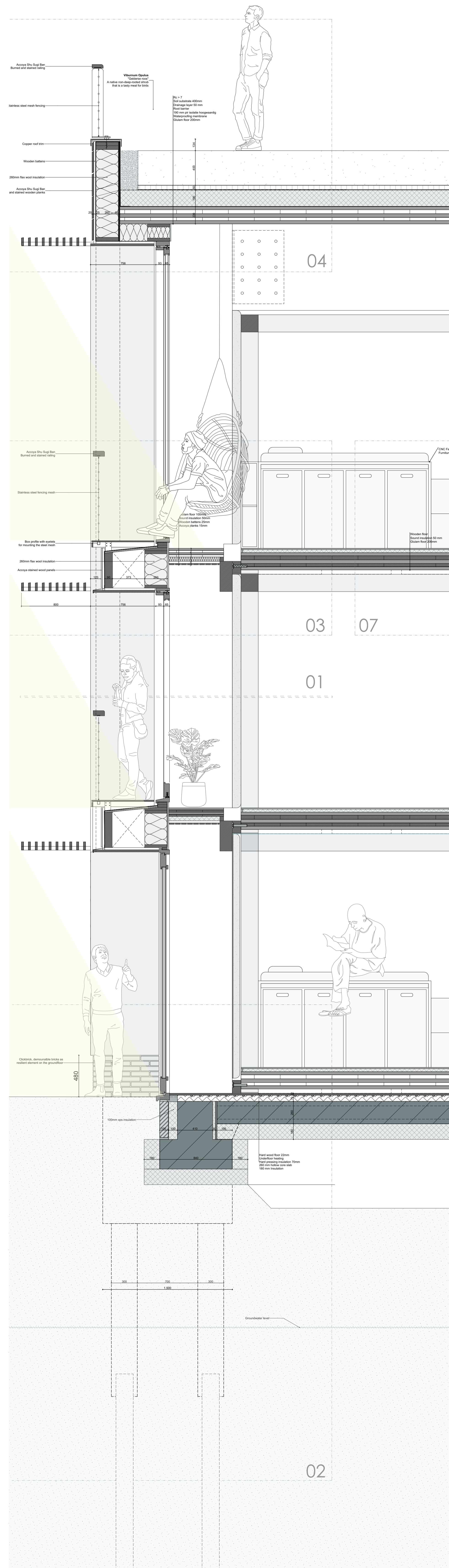


Clickbrick
Demontable dry mounted bricks



Betonpzetter
Waterproofing for the wooden piles

Wooden foundation piles
Sustainable and low CO2 foundation



04

03

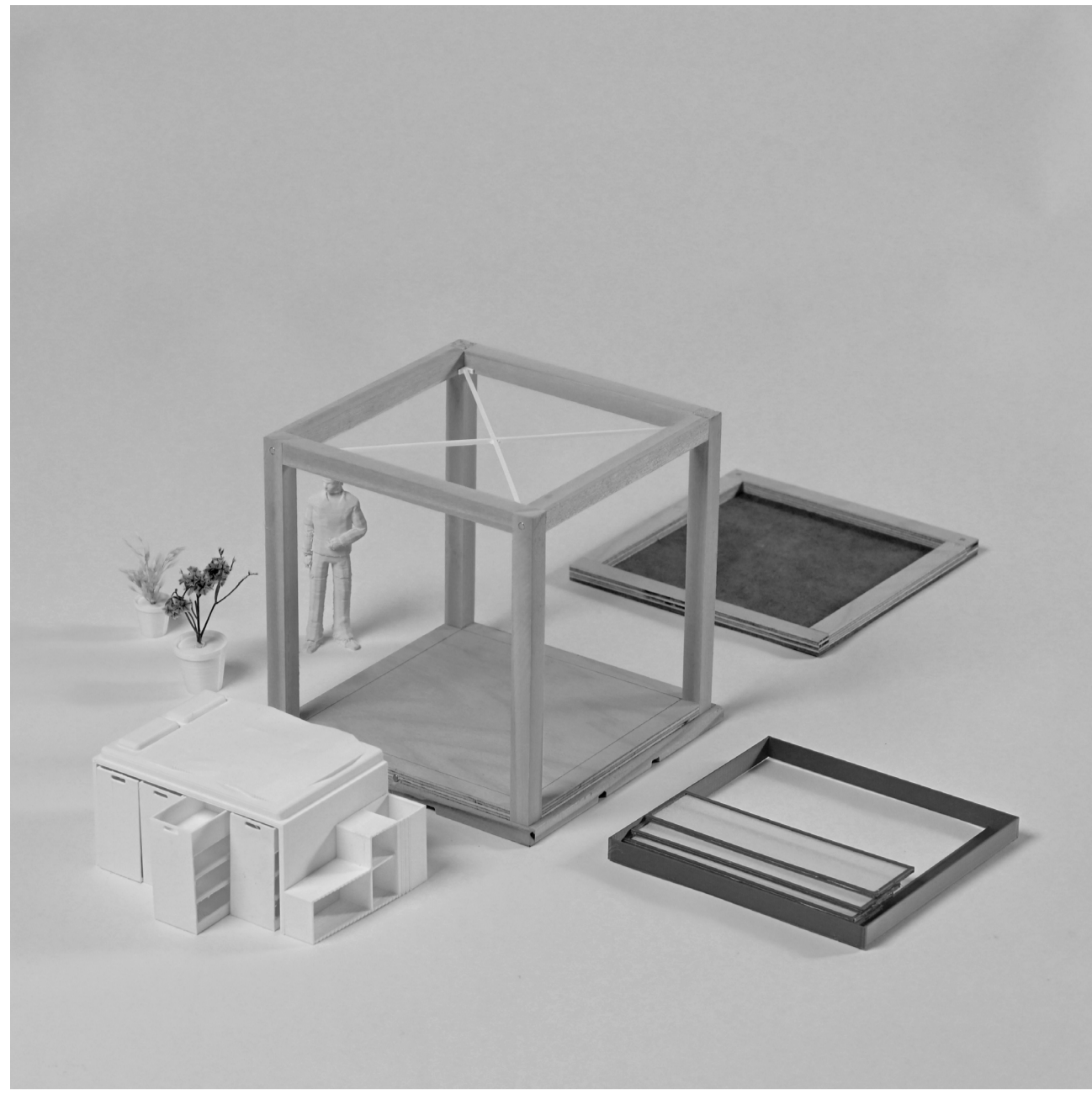
07

01

02

Construction

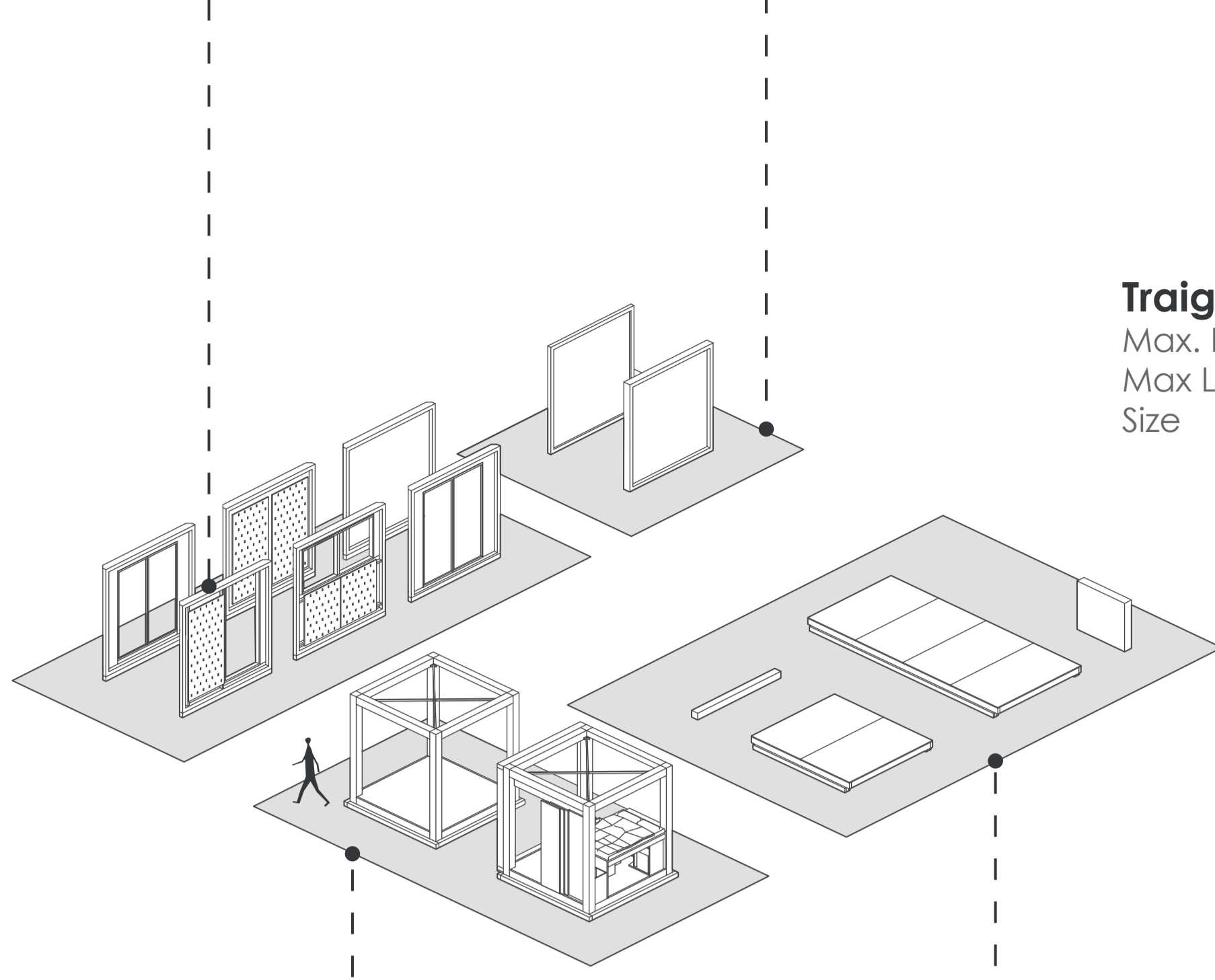
A Modulair Kit-of-Parts



The module
A movable wooden frame based on a minimal approach towards a private space

Inbetween panels
Single glass and 100mm flax wool insulation for a lightweight panel

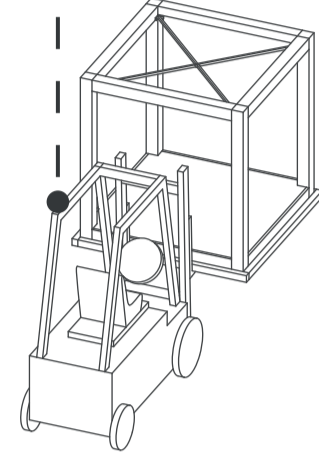
Interior panels
Width 100mm or 200 mm
Frame with adaptable infill panel



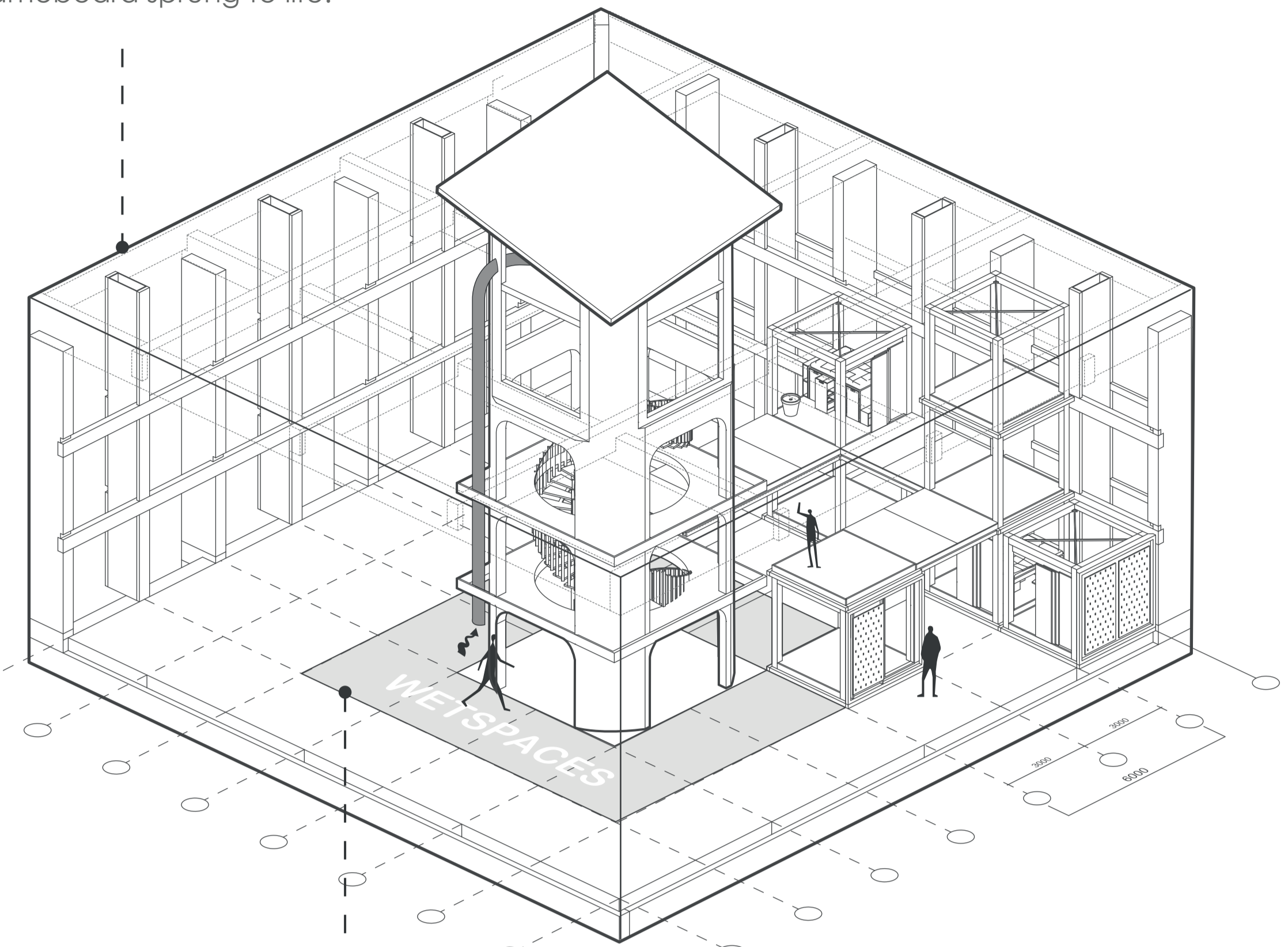
The modules
One module which can host all necessary functions

Floor elements
Max span 6m

Traigo 48 Forkliftruck
Max. H 7.5 m
Max Load. 2000 kg
Size 2.9 * 1.2 m



The block
The gameboard sprung to life!



Wetspaces
Wet and high ventilation spaces adjacent to the core

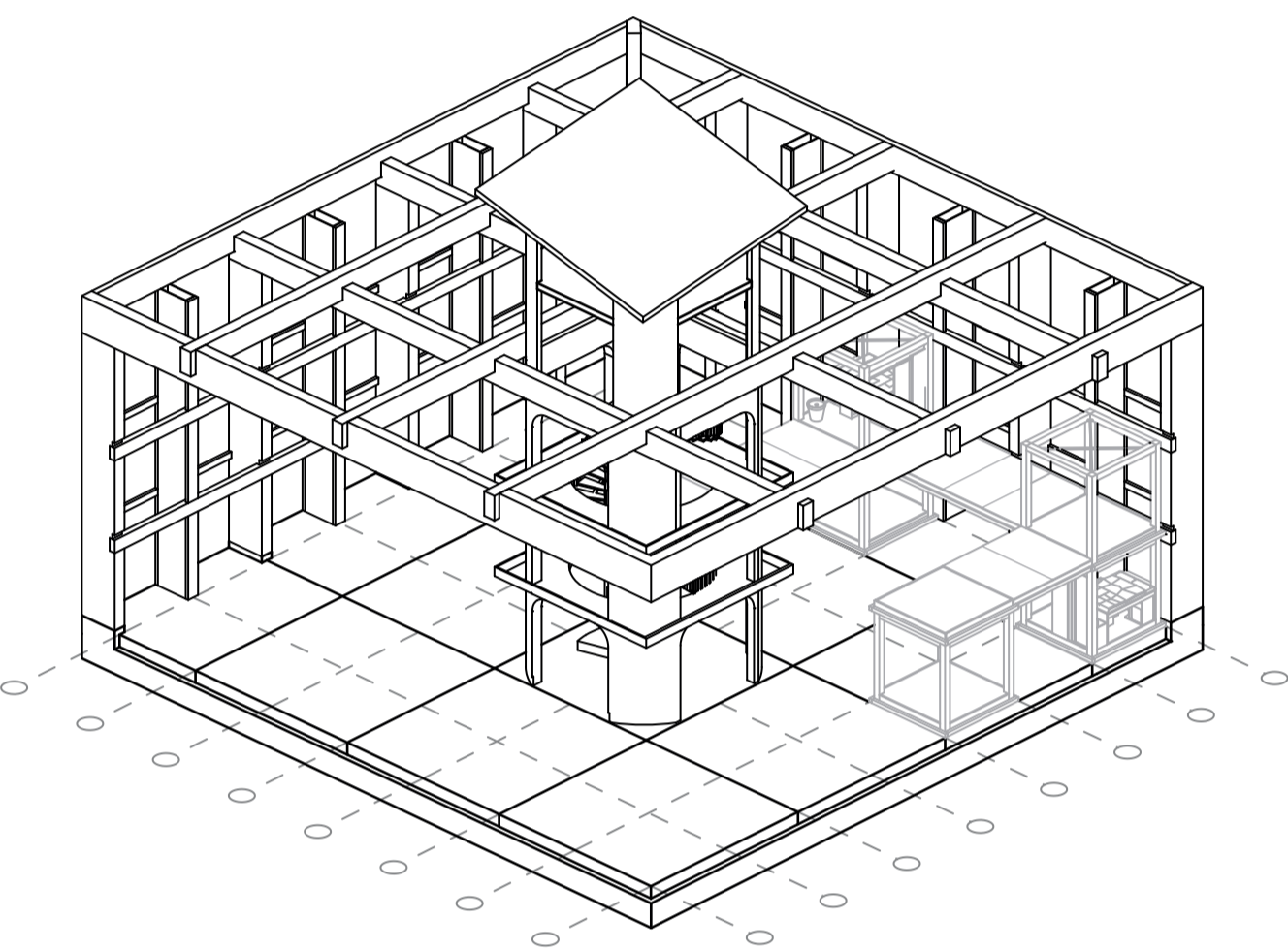
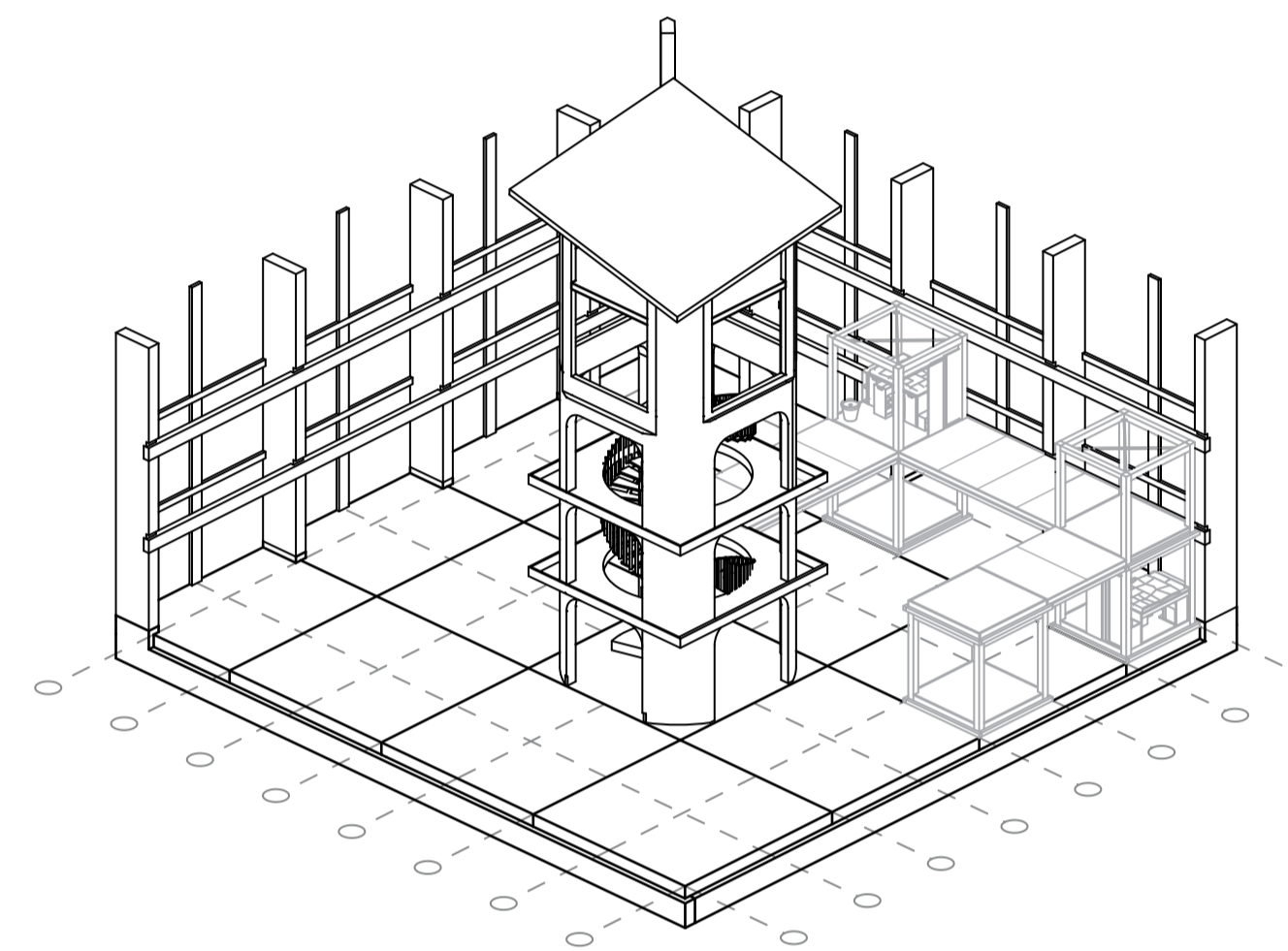
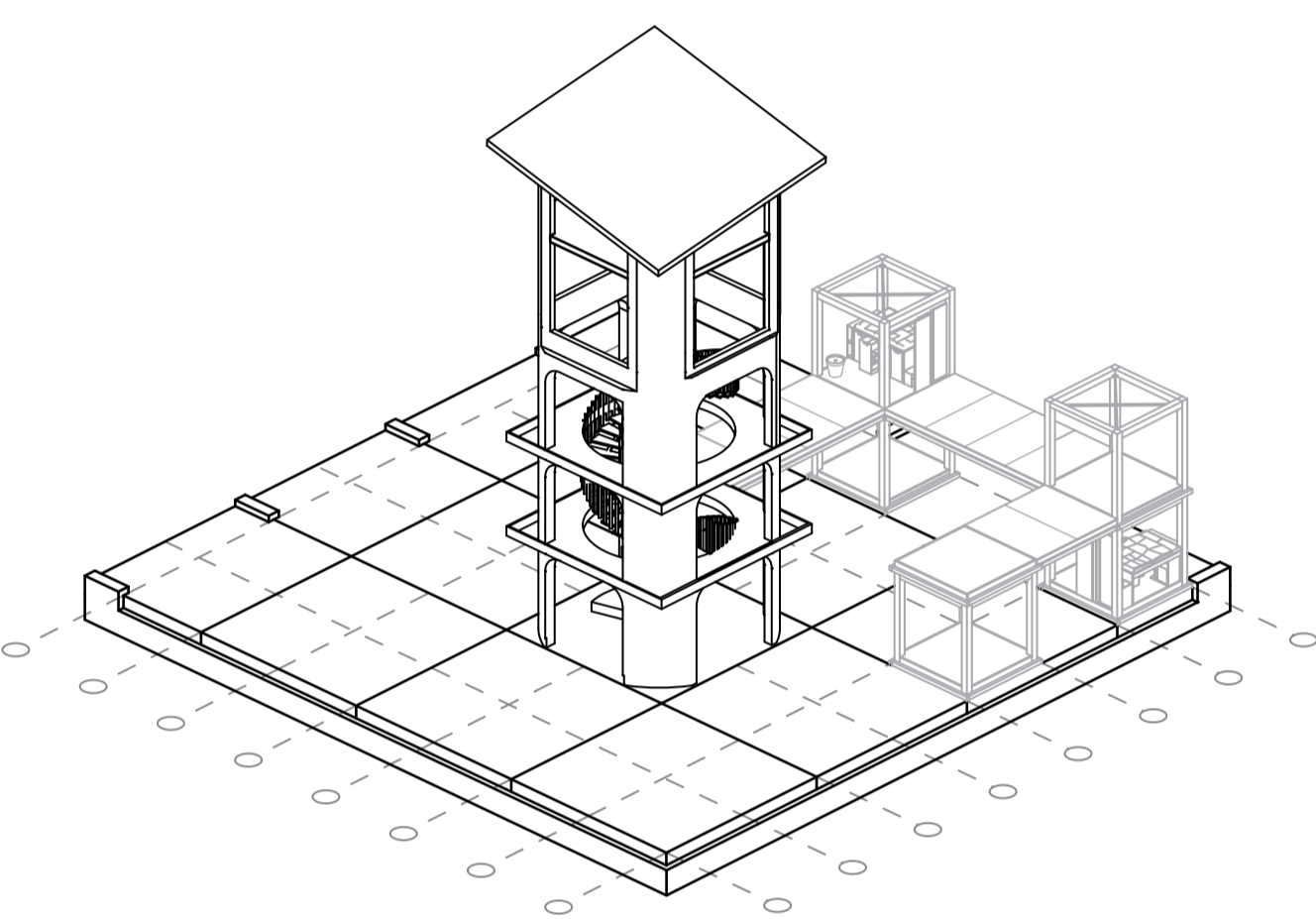
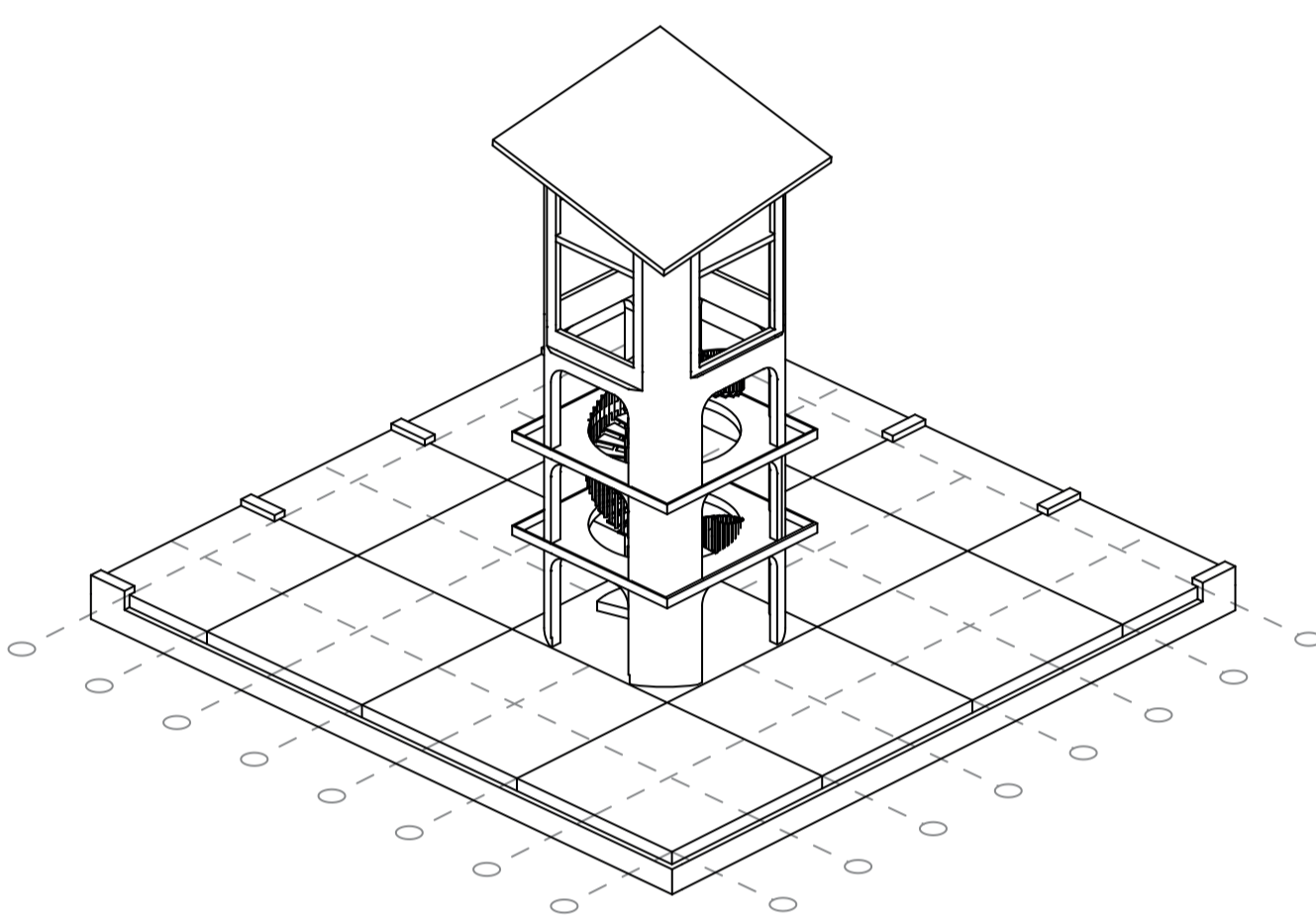
BUILDING UP THE BLOCK

01 Concrete core and foundation

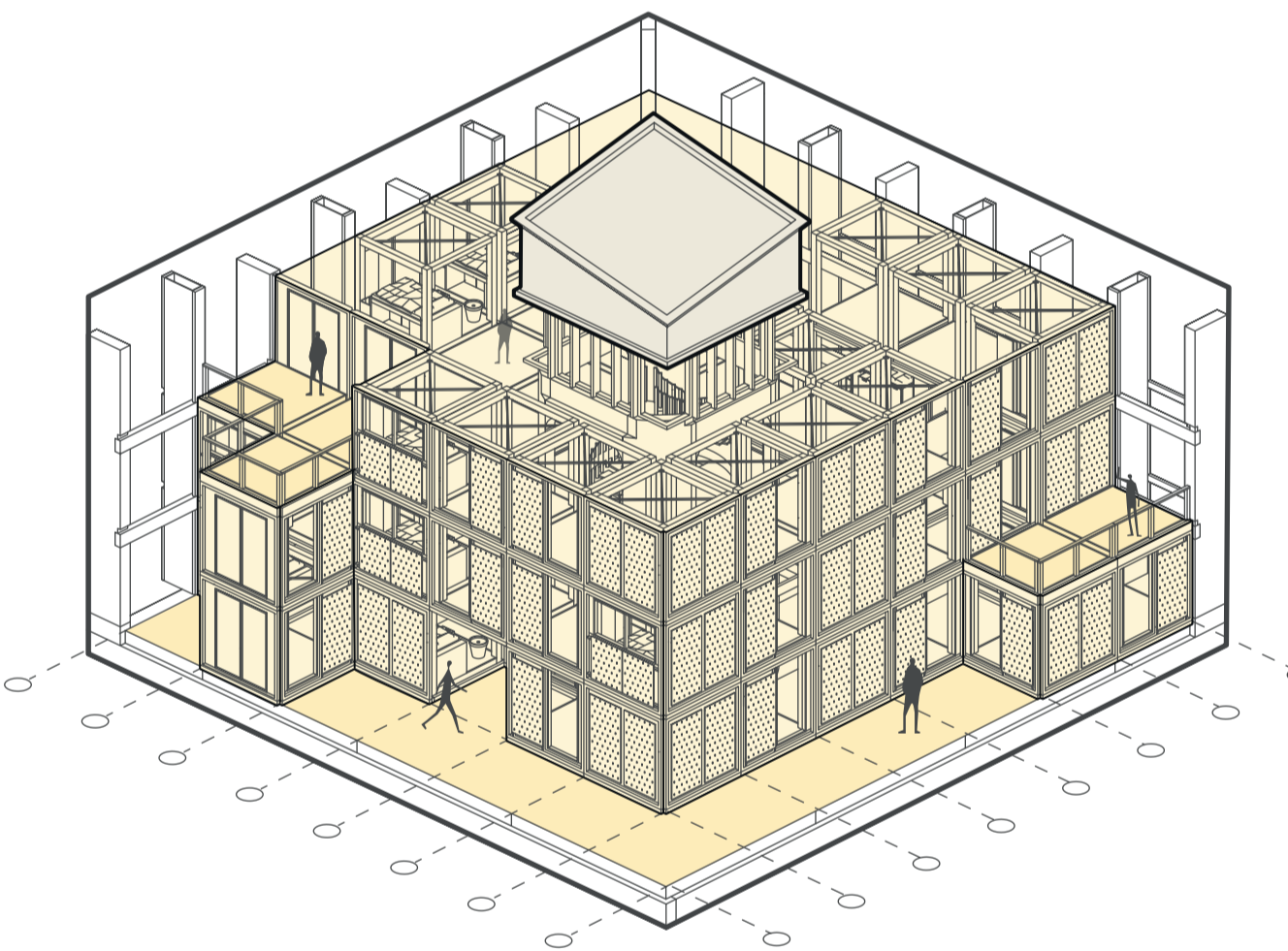
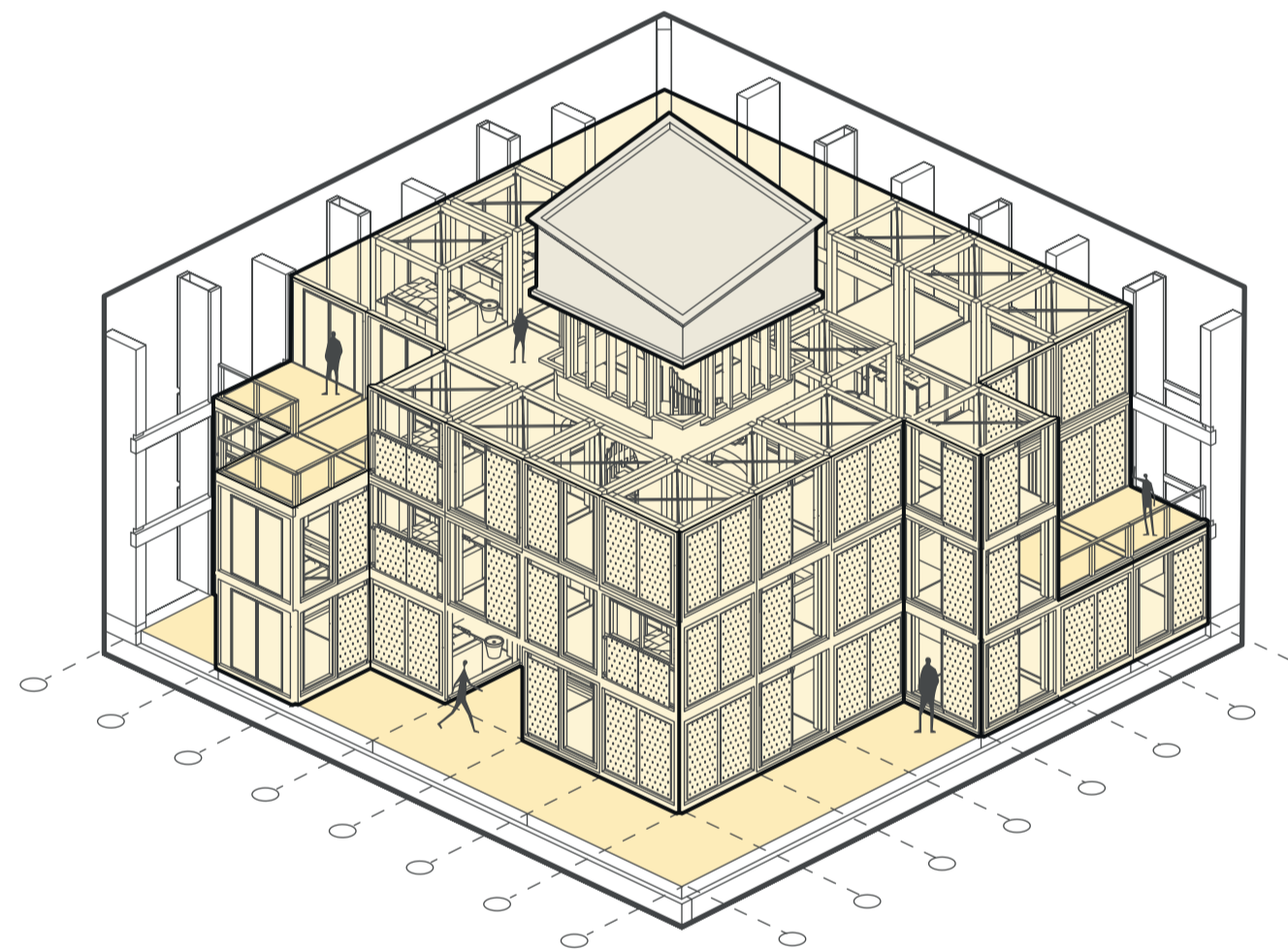
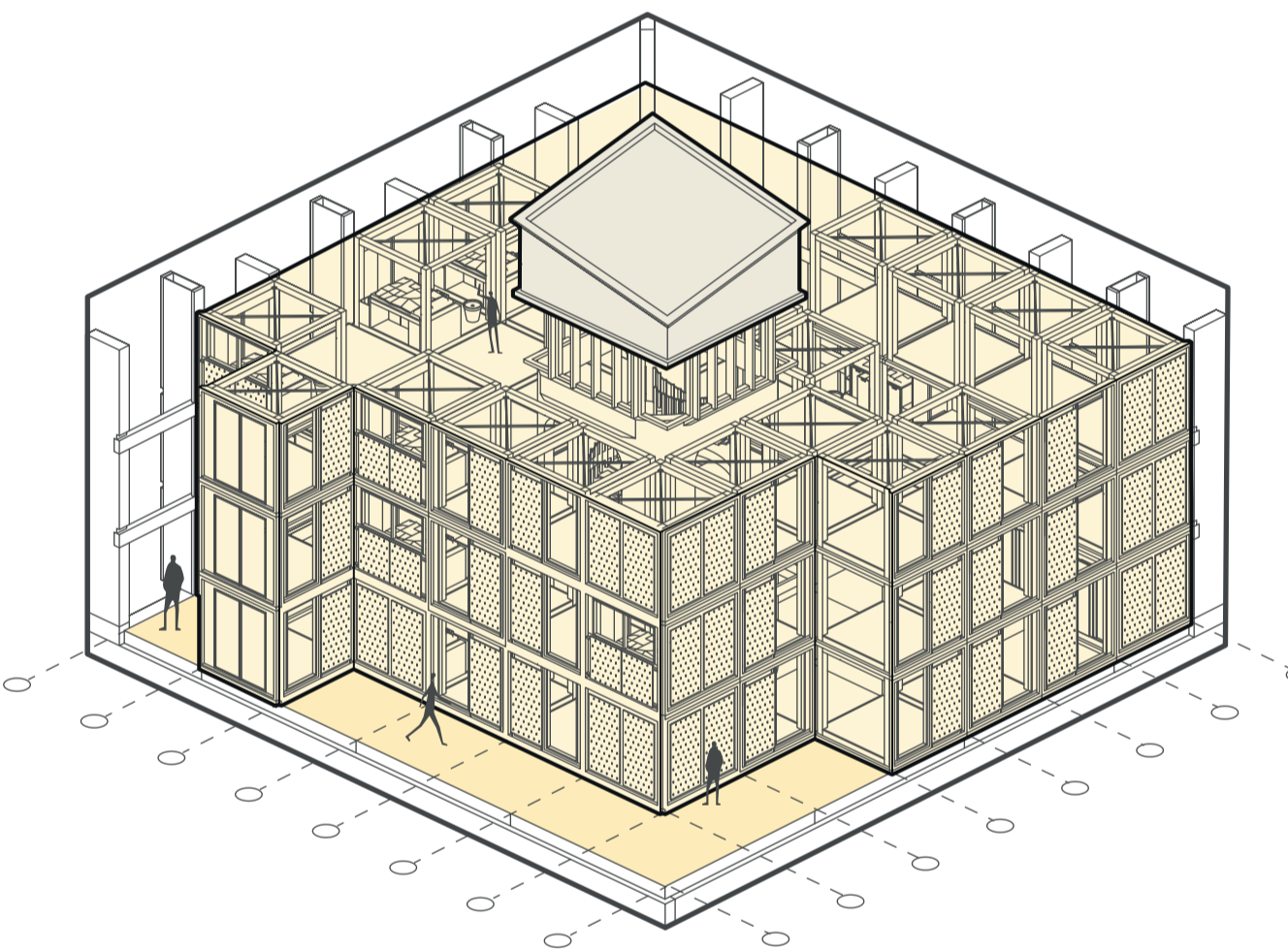
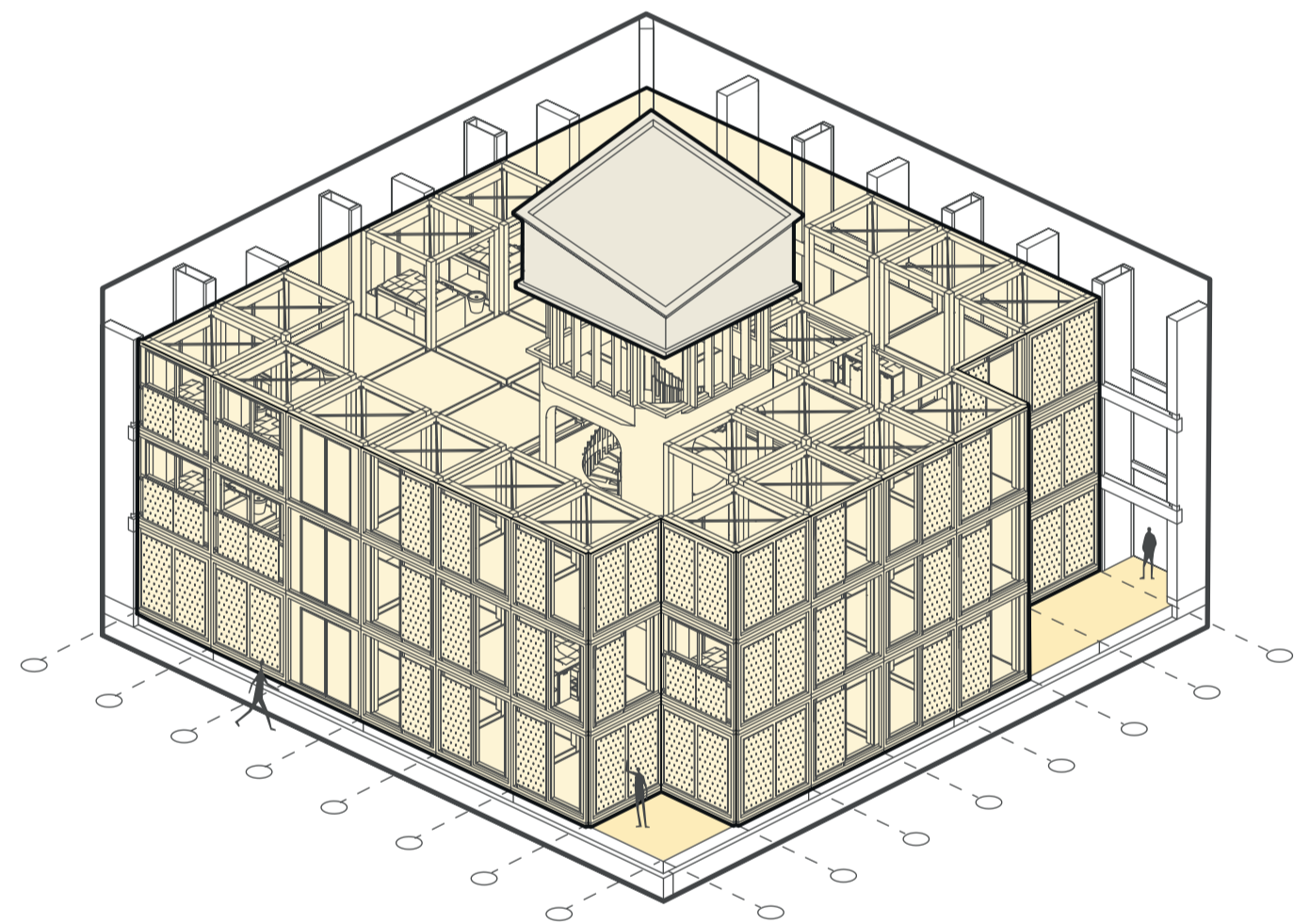
02 Modules placed on the grid

03 CLT Columns

04 CLT Roof structure



Varying borders

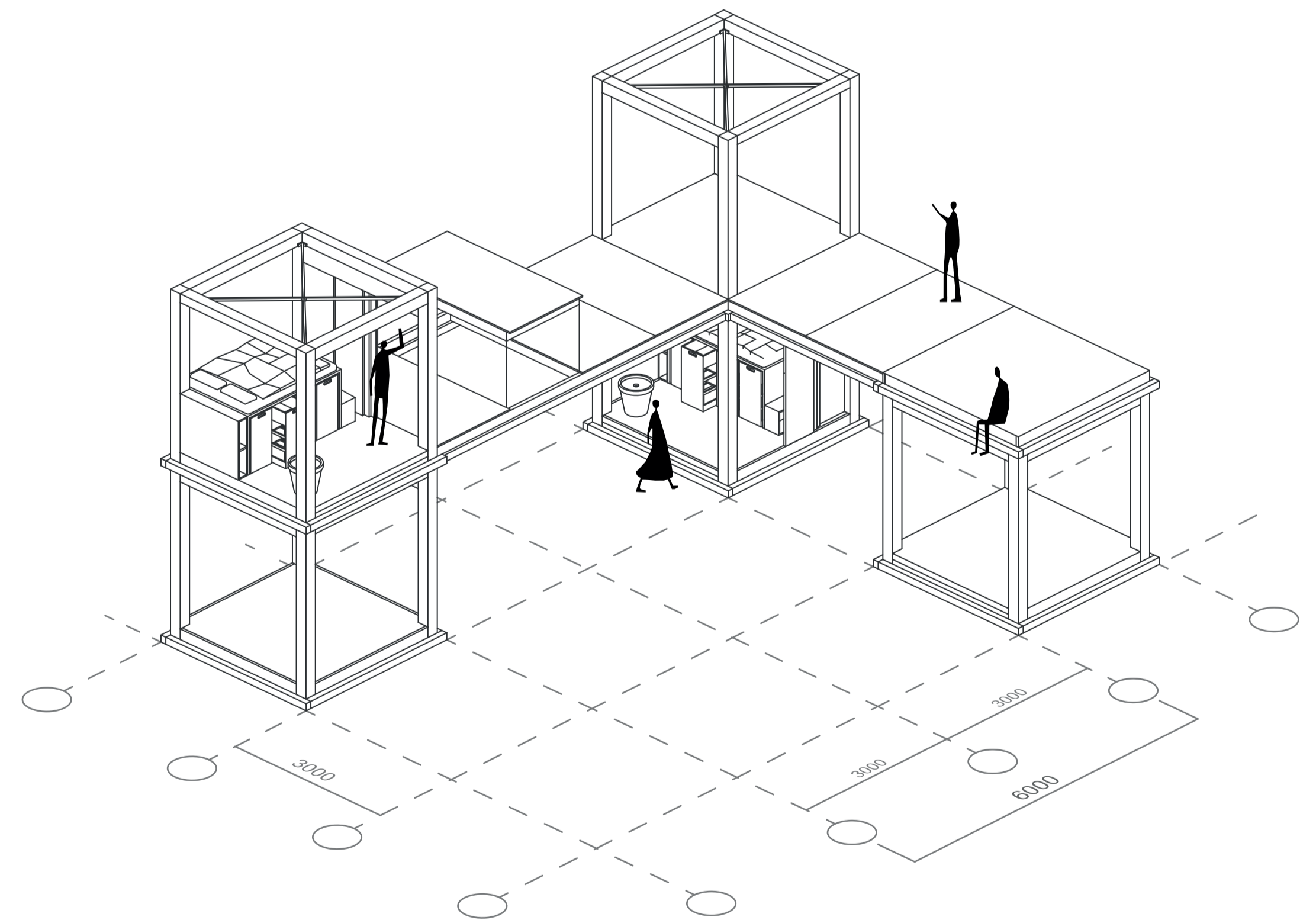


When does what happen?

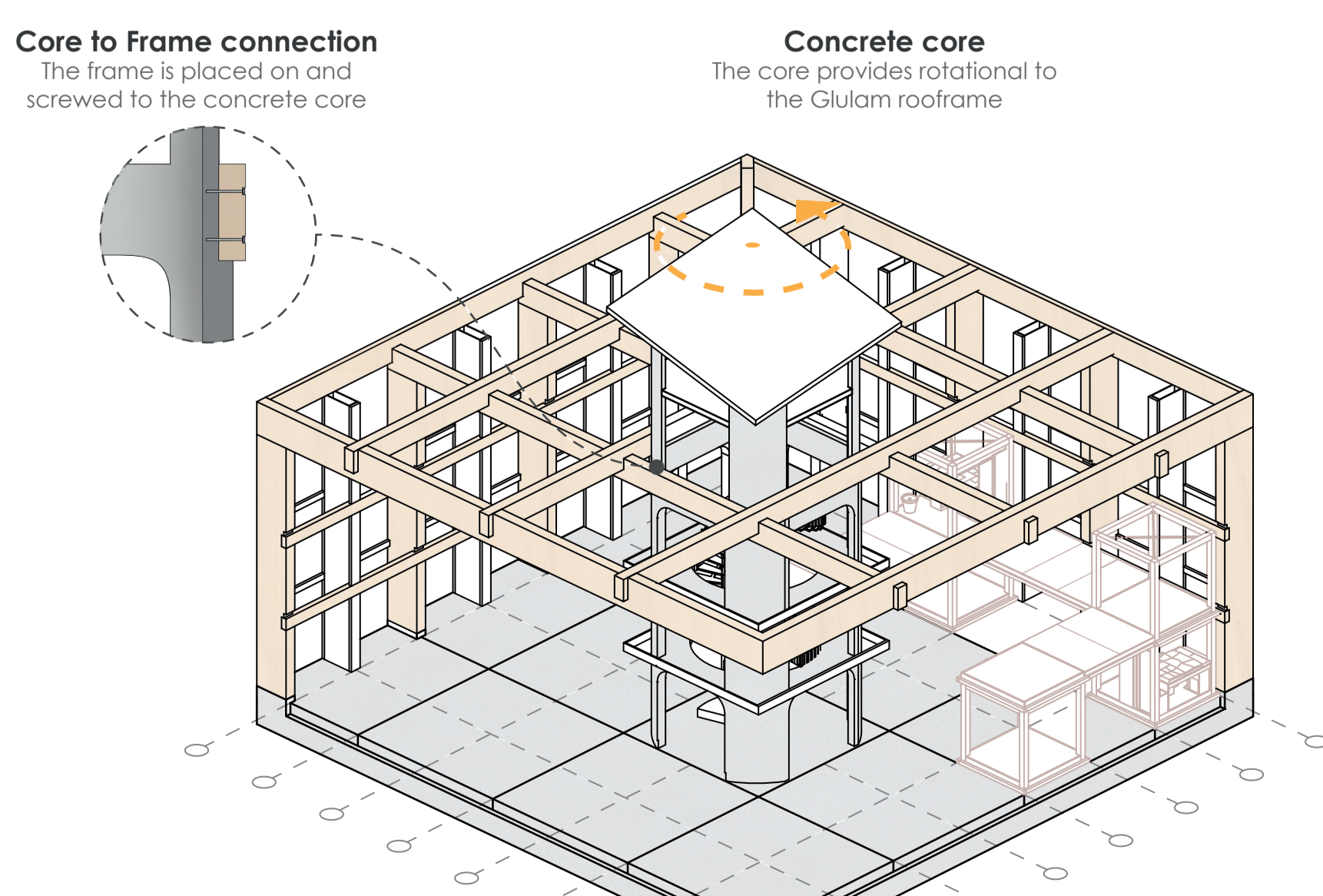
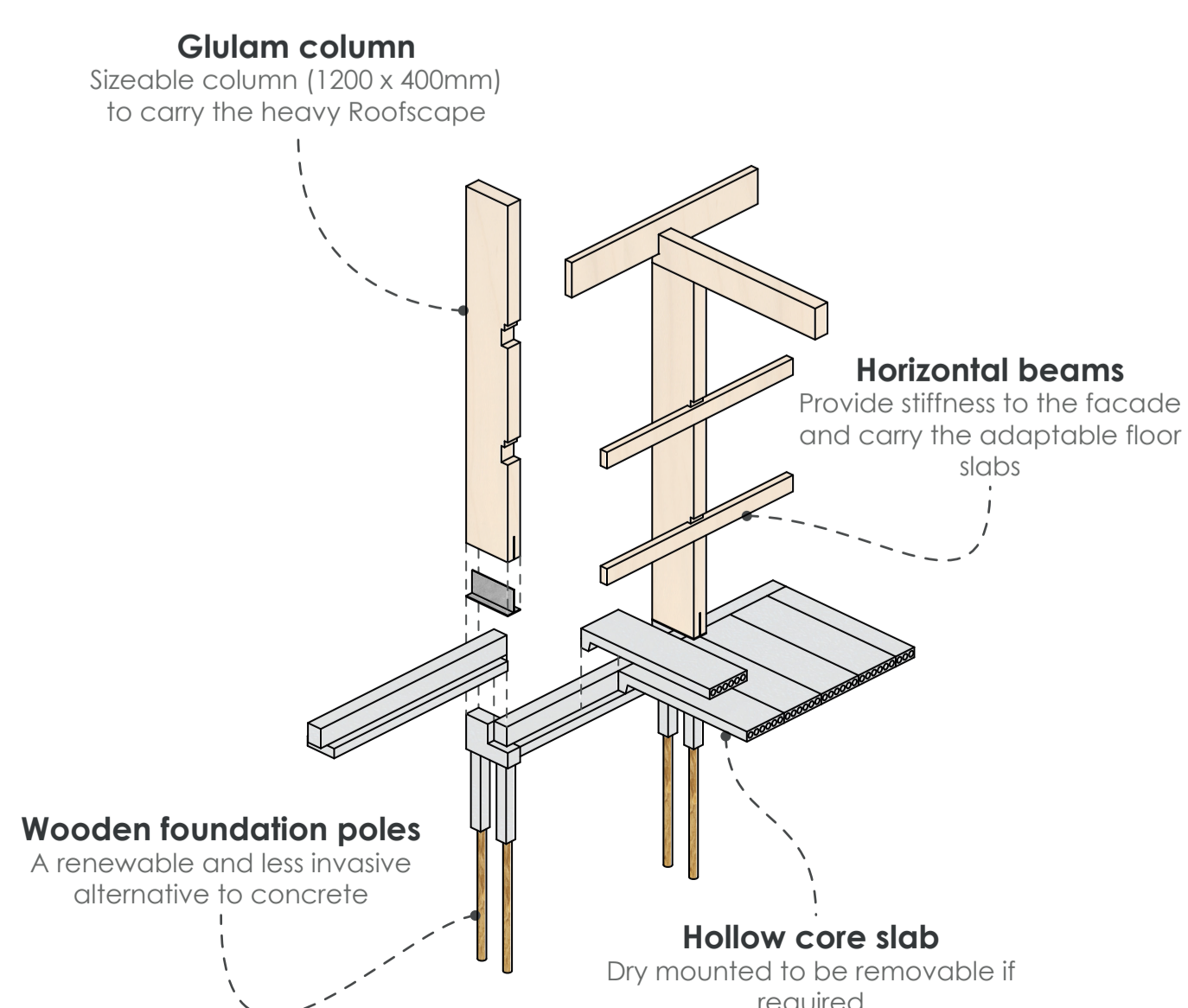
After 3.5 years evaluate how the house functions and see what could be improved or removed

After 10.5 years check if technical aspects of the building still hold up or need to be improved

After 21 years check if the shell of the building needs an update



Facade Building Construction



Construction Elements

