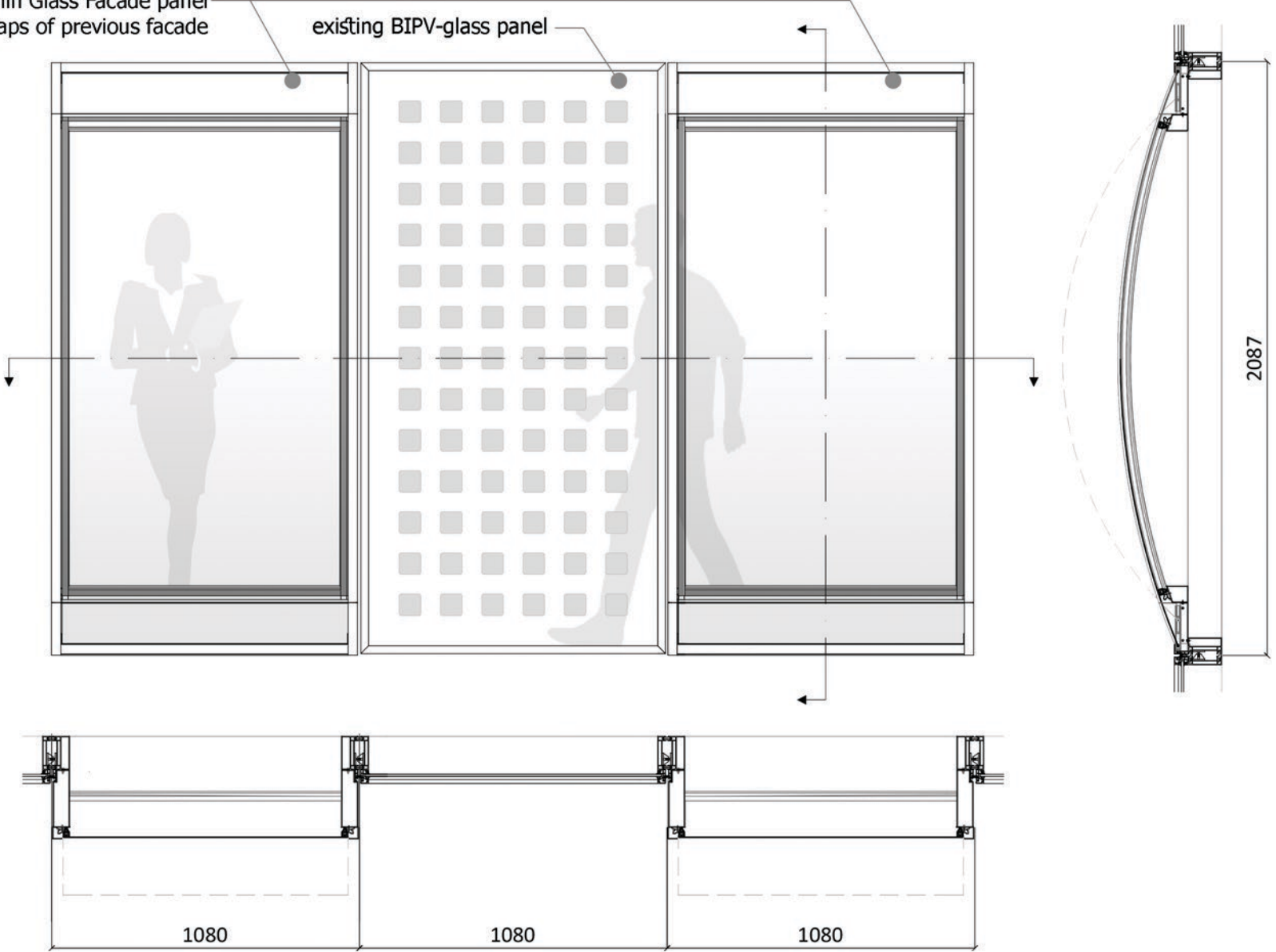


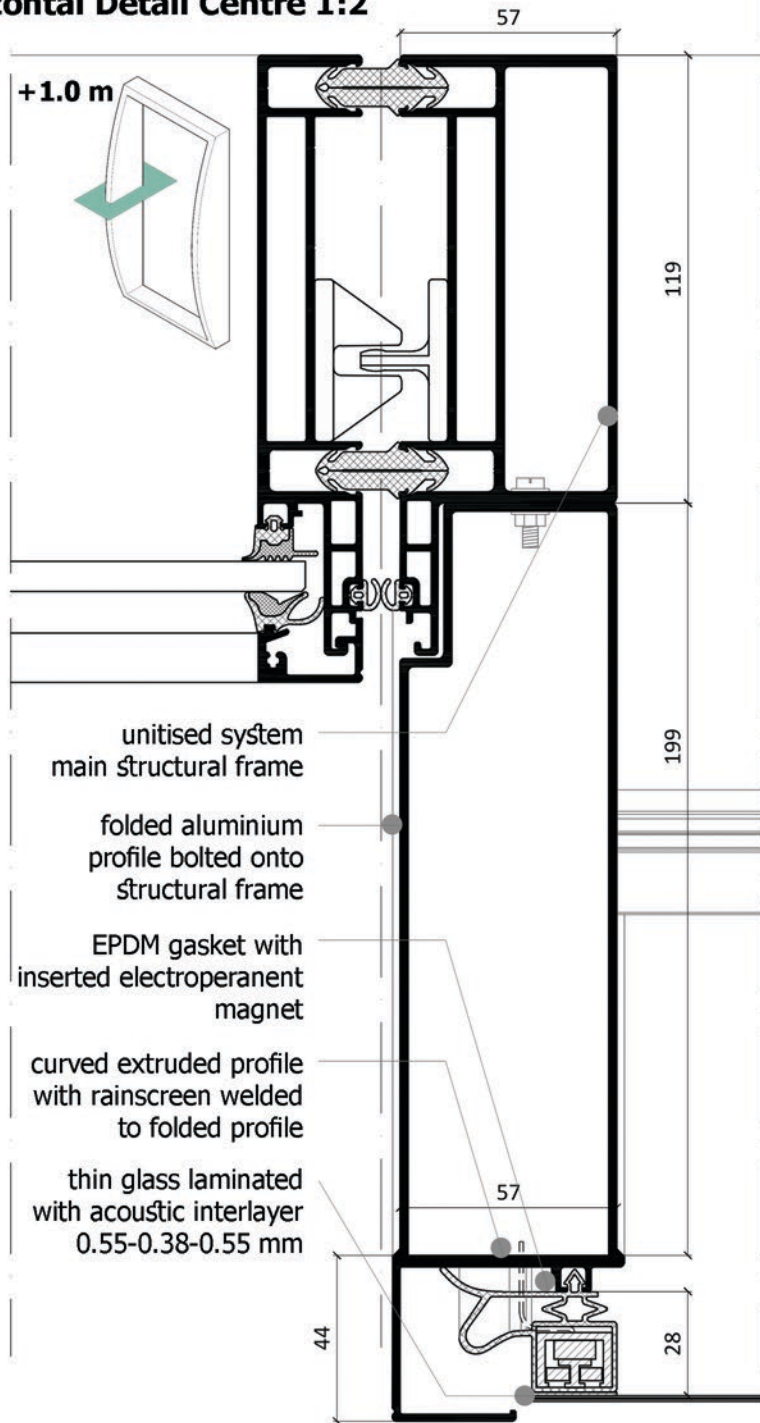
Front view, section and plan 1:20

Kinetic Thin Glass Facade panel
filling gaps of previous facade

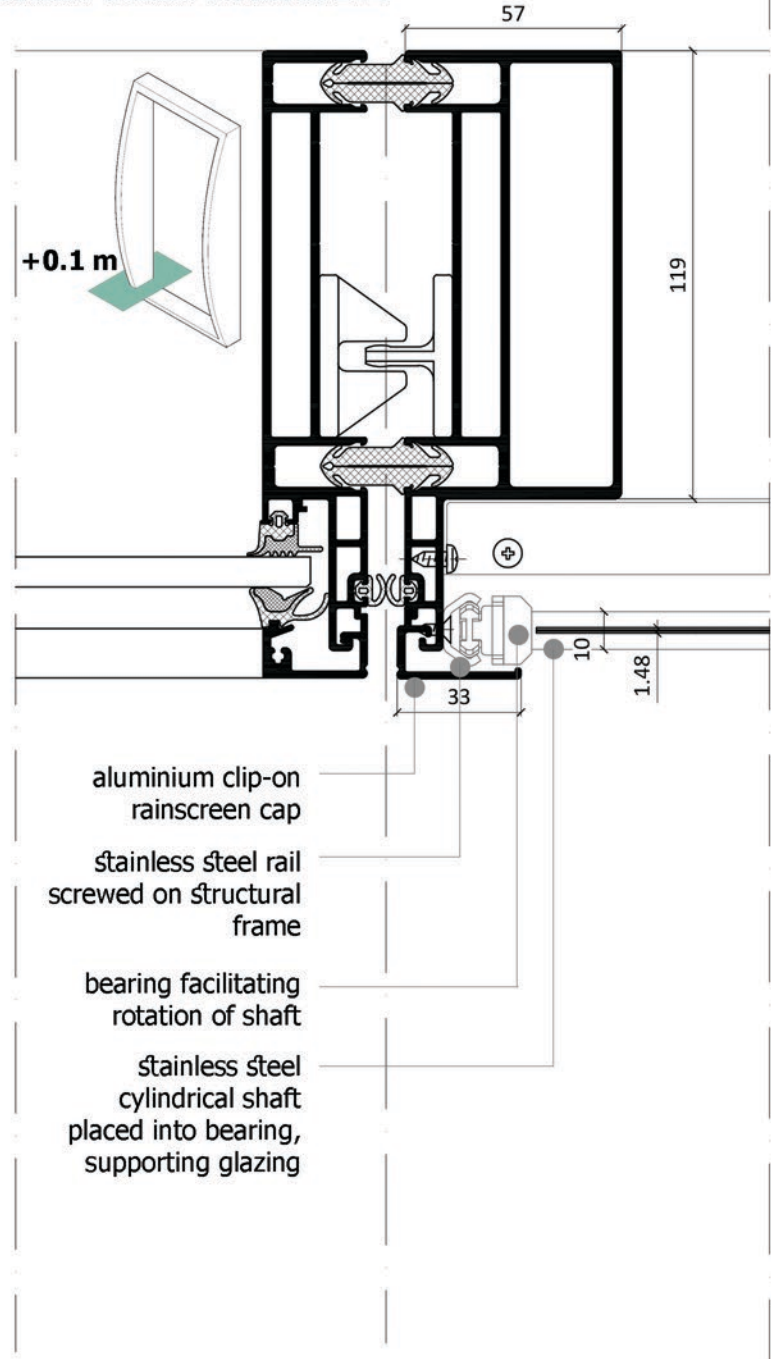
existing BIPV-glass panel



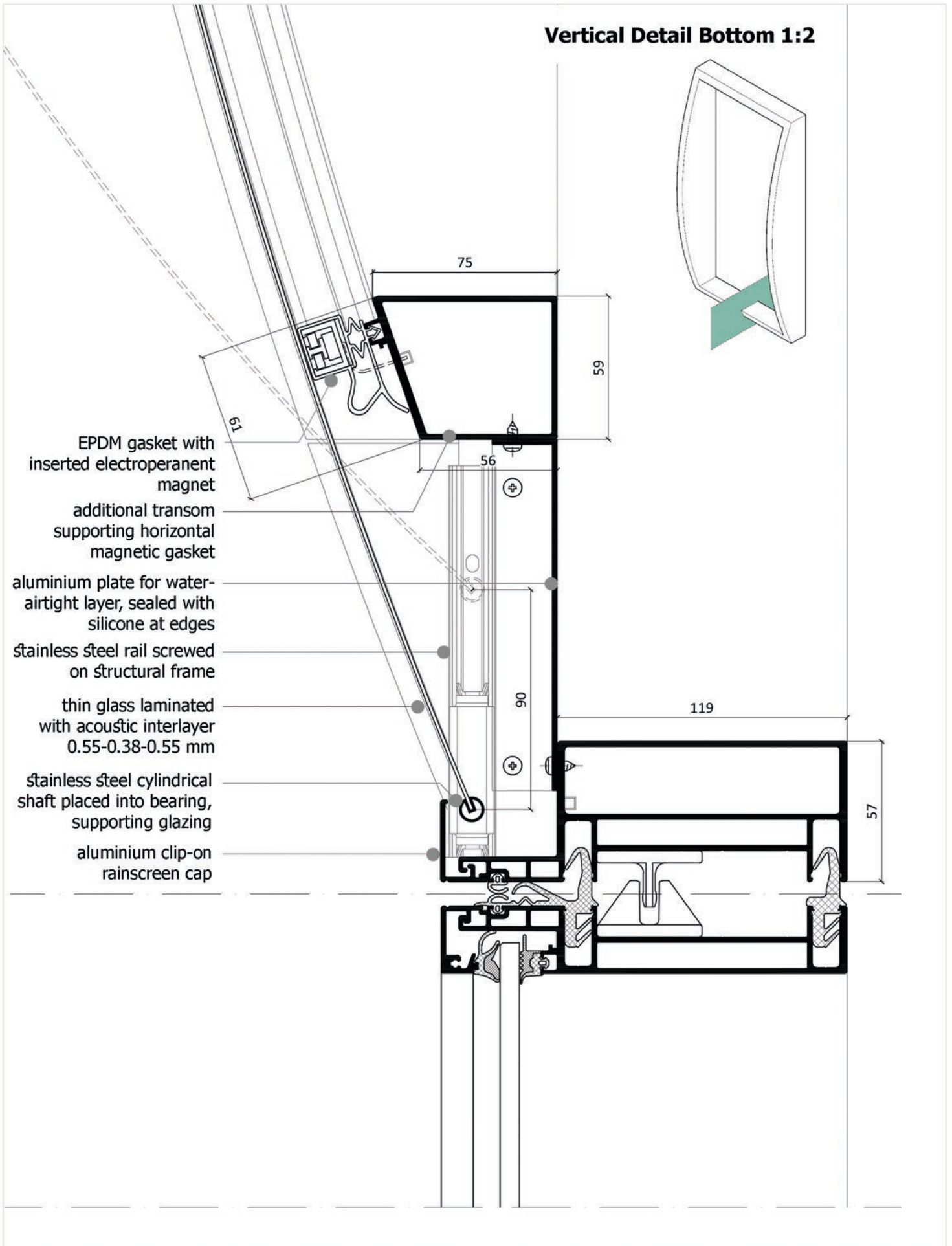
Horizontal Detail Centre 1:2



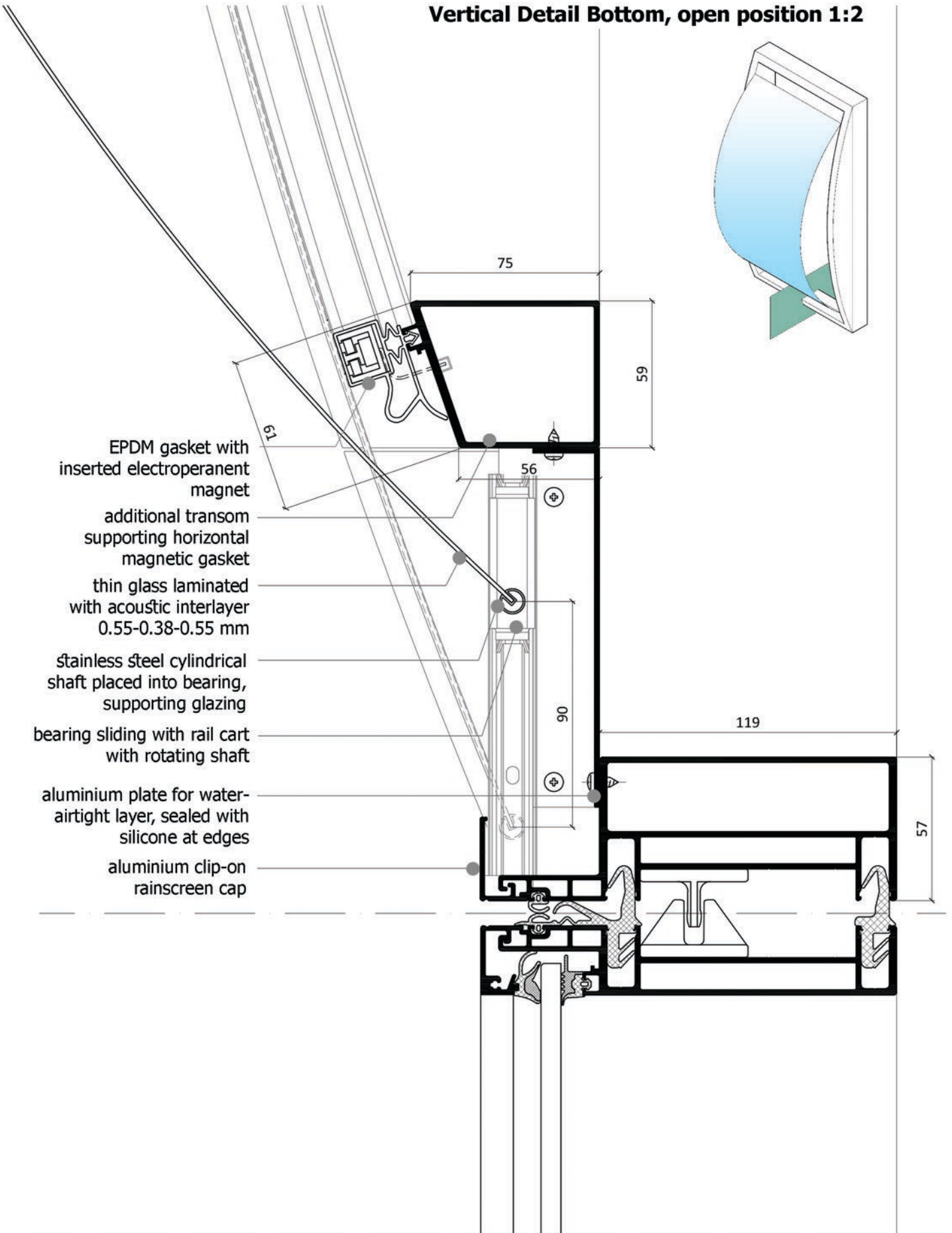
Horizontal Detail Bottom 1:2



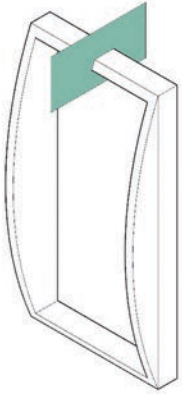
Vertical Detail Bottom 1:2



Vertical Detail Bottom, open position 1:2



Vertical Detail Top 1:2



- aluminium clip-on rainscreen cap
- stainless steel cylindrical shaft placed into bearing, supporting glazing
- bearing sliding with rail cart with rotating shaft
- aluminium plate for water-airtight layer, sealed with silicone at edges
- thin glass laminated with acoustic interlayer 0.55-0.38-0.55 mm
- additional transom supporting horizontal magnetic gasket
- EPDM gasket with inserted electroperant magnet

