

**THE INVISIBLE MAGNET:  
UNLOCKING DISCOVERY, ENCOUNTER AND INTERACTION.**

# TYPICAL SECTION 1:20

timber frame structure

## ROOF

biodiversity green roof  
EPDM  
100mm insulation  
320mm Lignatur panels with integrated acoustic qualities (library functions)

## FLOOR II

timber floor raised on timber brackets  
Trox FSL-U-ZAS decentralized ventilation system (160x1100x860mm)  
screed with inlaid underfloor heating pipes  
45mm wood fiber board insulation  
320mm Lignatur panels with integrated acoustic qualities (library functions)

## WALL

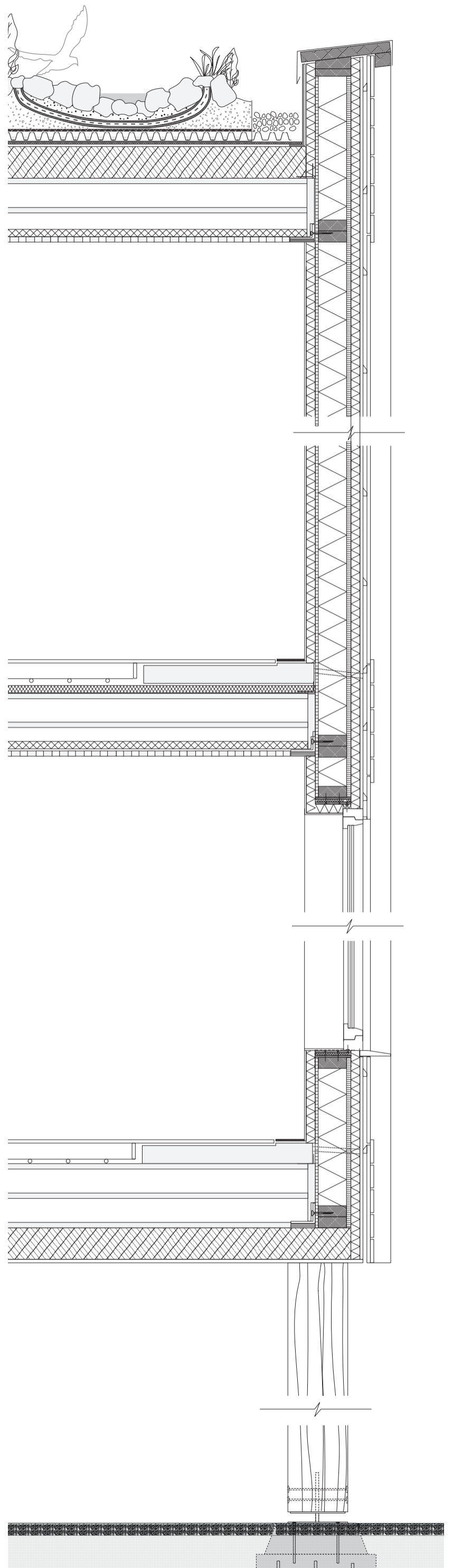
timber facade finishing bolted against underlying timber structure  
vapour barrier  
45 mm wood fiber board insulation  
22mm timber plate  
150mm wood fiber board insulation  
15 mm timber plate  
45 mm wood fiber board insulation  
timber interior finishing

## FLOOR I

timber floor raised on timber brackets  
Trox FSL-U-ZAS decentralized ventilation system (160x1100x860mm)  
screed with inlaid underfloor heating pipes  
300mm wood fiber board insulation  
320mm Lignatur panels  
exterior finishing

## GROUND FLOOR

timber column connected to foundation  
60mm layer of fine vgravel  
geotextile  
150mm layer of rougher gravel



# TYPICAL SECTION 1:20

timber frame structure with CLT bracing walls

## ROOF

extensive green roof  
EPDM  
100mm insulation  
320mm Lignatur panels

## WALL II

timber facade finishing bolted against underlying timber structure  
vapour barrier  
45 mm wood fiber board insulation  
22mm timber plate  
150mm wood fiber board insulation  
15 mm timber plate  
45 mm wood fiber board insulation  
timber interior finishing

## FLOOR II

timber floor raised on timber brackets  
Trox FSL-U-ZAS decentralized ventilation system (160x1100x860mm)  
screed with inlaid underfloor heating pipes  
45mm wood fiber board insulation  
320mm Lignatur panels with integrated acoustic qualities (library functions)

## WALL I (BRACING WALL)

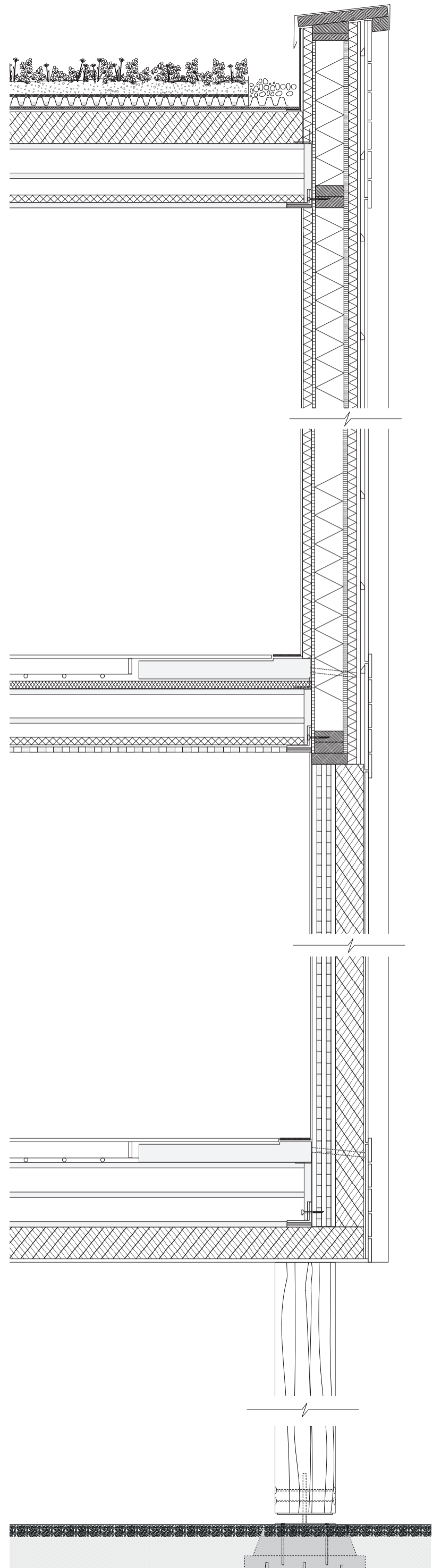
timber finishing bolted against underlying timber structure  
vapour barrier  
140mm wood fiber board insulation  
166mm Cross-laminated timber wall  
timber interior finishing

## FLOOR I

timber floor raised on timber brackets  
Trox FSL-U-ZAS decentralized ventilation system (160x1100x860mm)  
screed with inlaid underfloor heating pipes  
300mm wood fiber board insulation  
320mm Lignatur panels  
exterior finishing

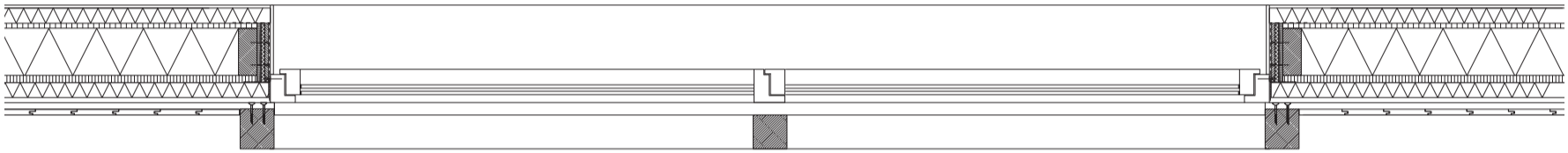
## GROUND FLOOR

timber column connected to foundation  
60mm layer of fine vgravel  
geotextile  
150mm layer of rougher gravel

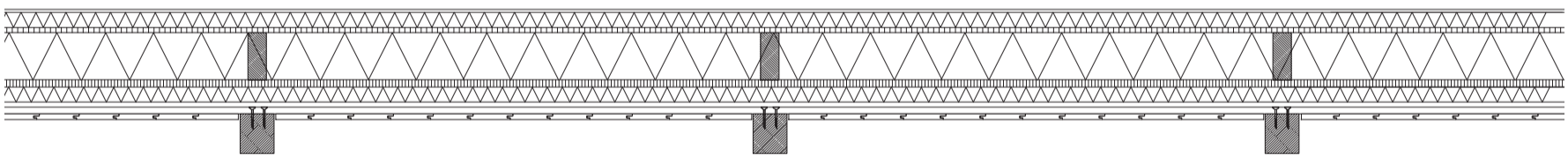


# TYPICAL SECTION HORIZONTAL 1:20

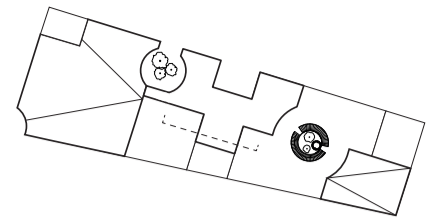
window in timber frame structure



timber frame structure

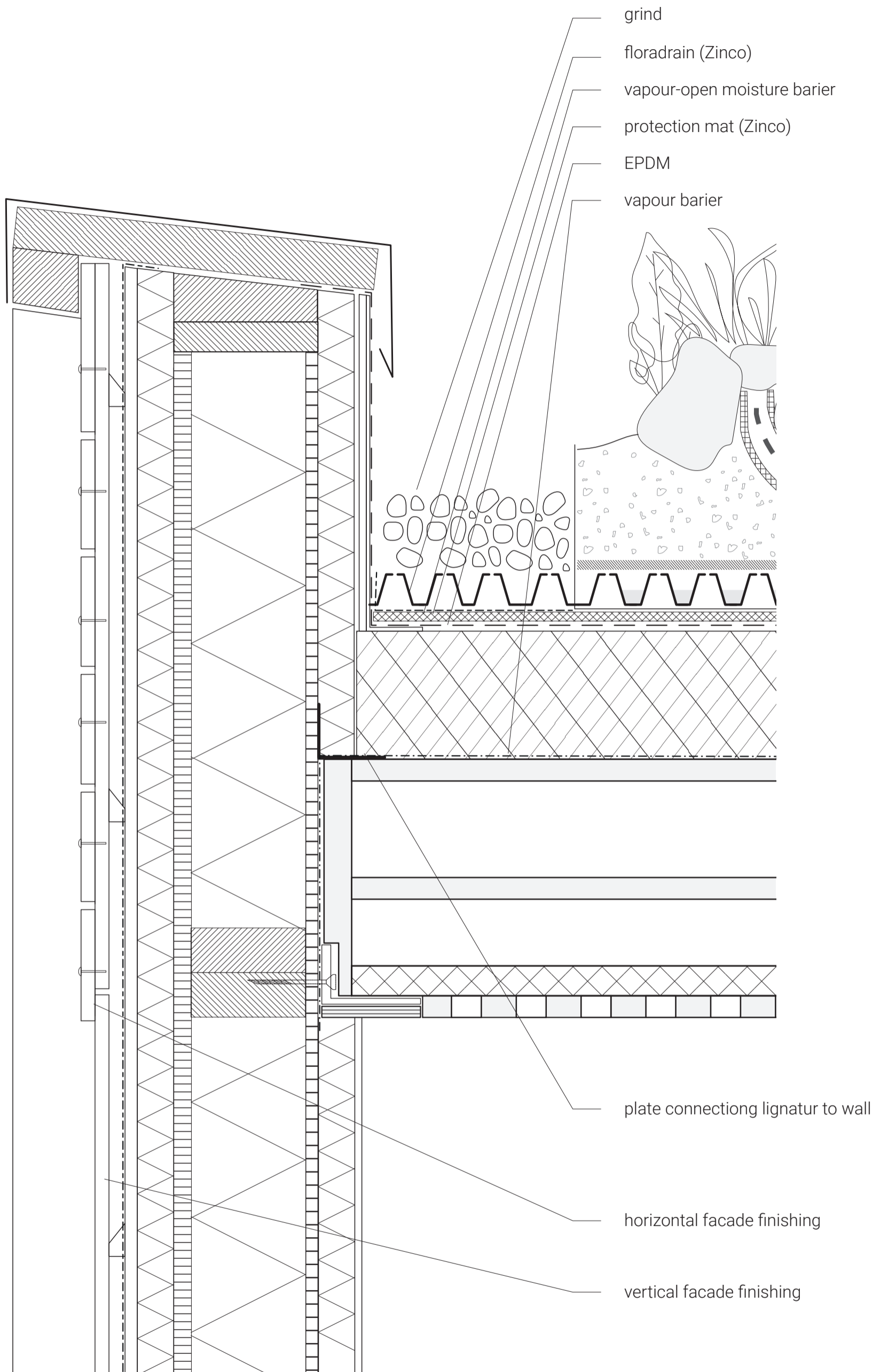


# TYPICAL STRUCTURE 1:100



# DETAIL 1 1:5

roof edge

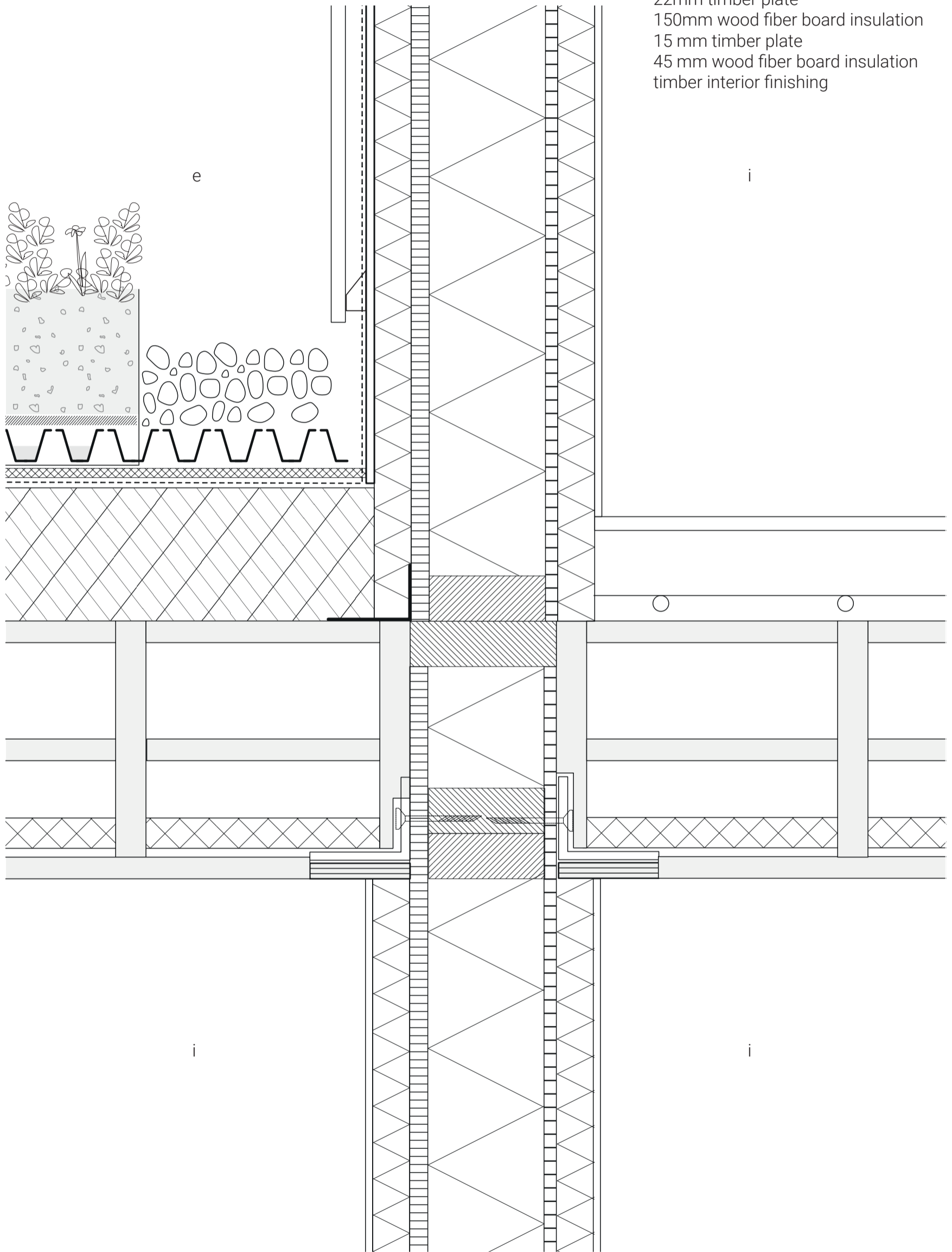


# DETAIL 2 1:5

combination interior and exterior level +1

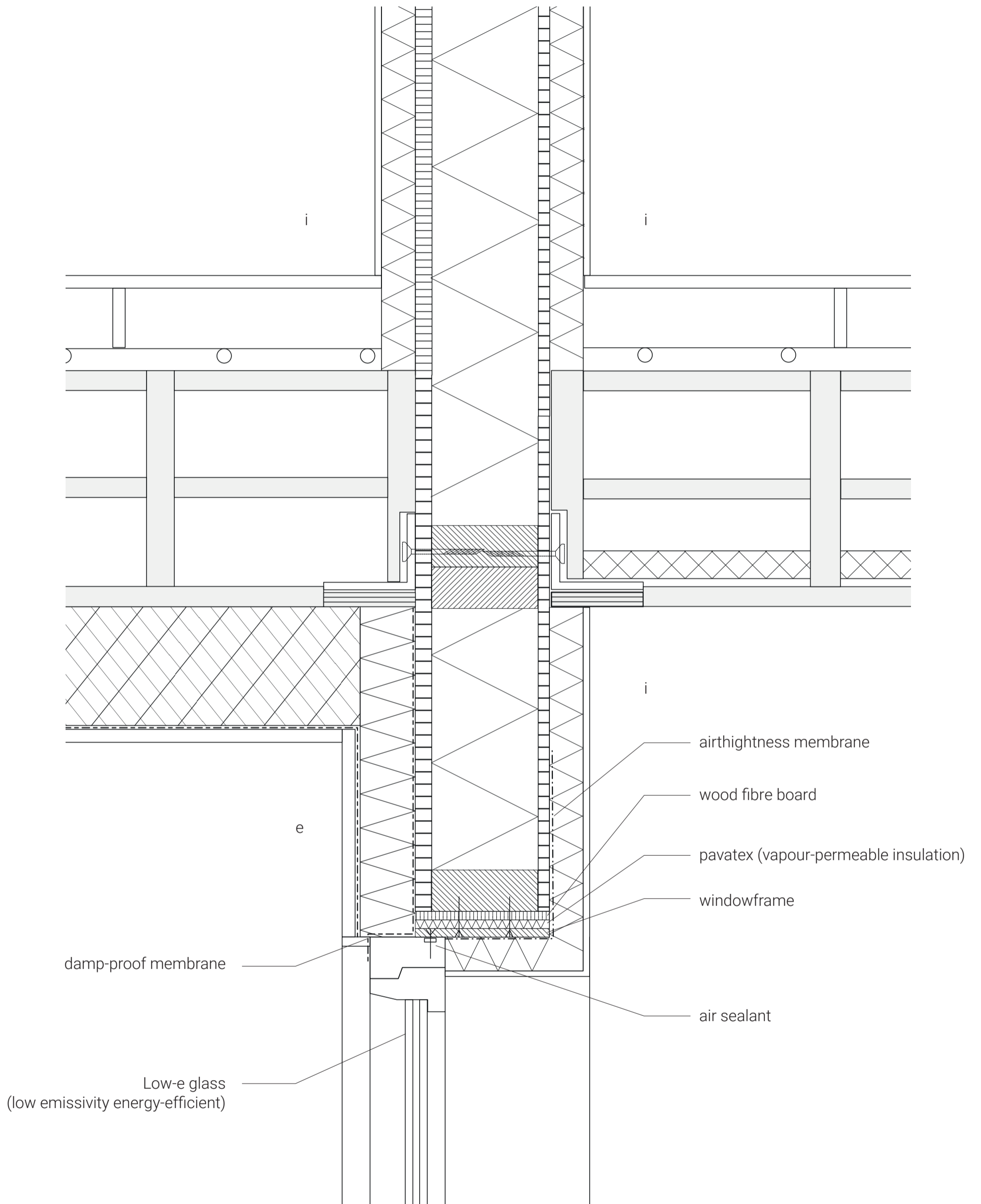
## WALL

- timber facade finishing bolted against underlaying
- timber slats
- vapour barrier
- timber plate
- 45 mm wood fiber board insulation
- 22mm timber plate
- 150mm wood fiber board insulation
- 15 mm timber plate
- 45 mm wood fiber board insulation
- timber interior finishing



# DETAIL 3 1:5

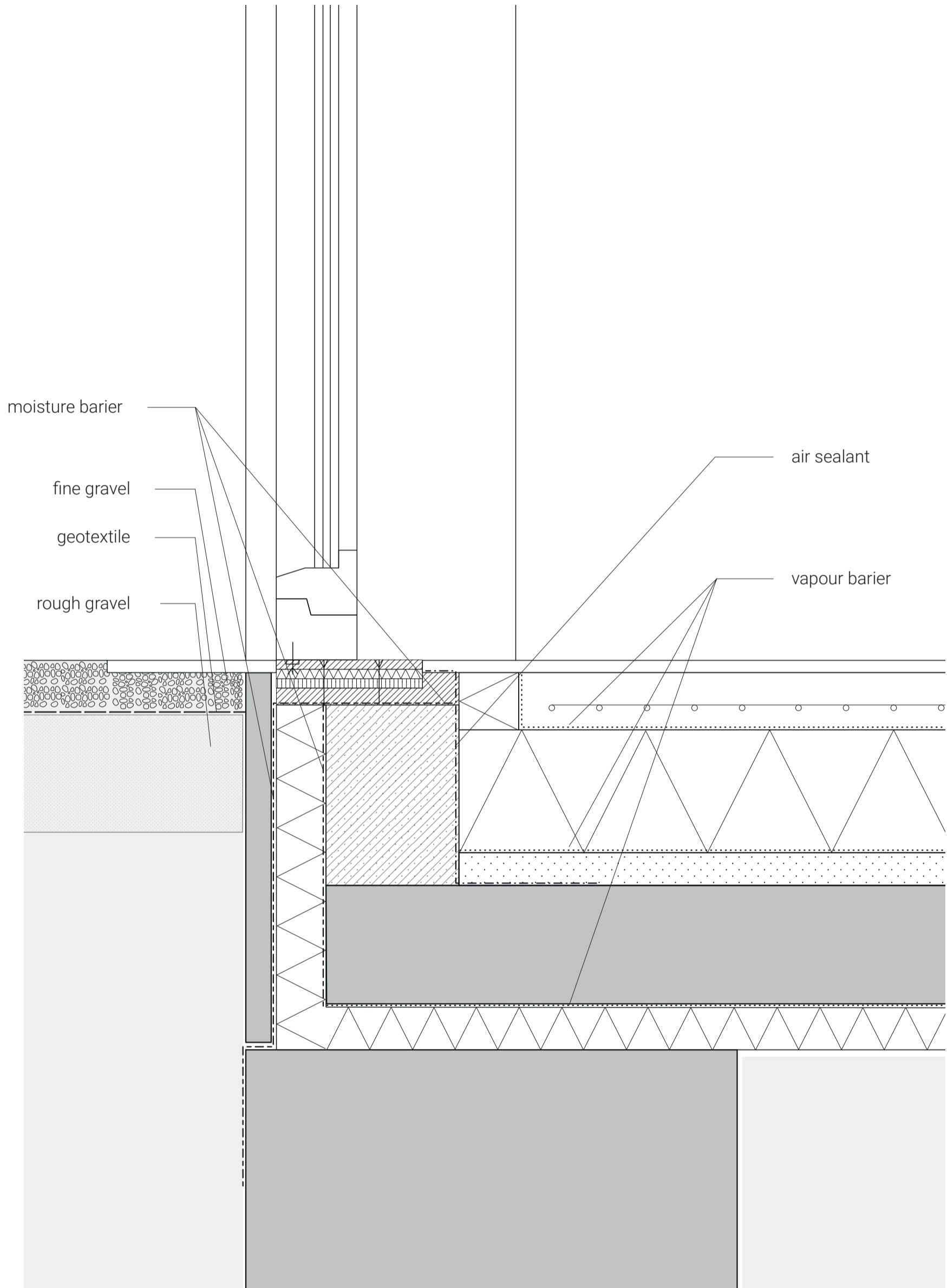
combination interior and exterior level +0





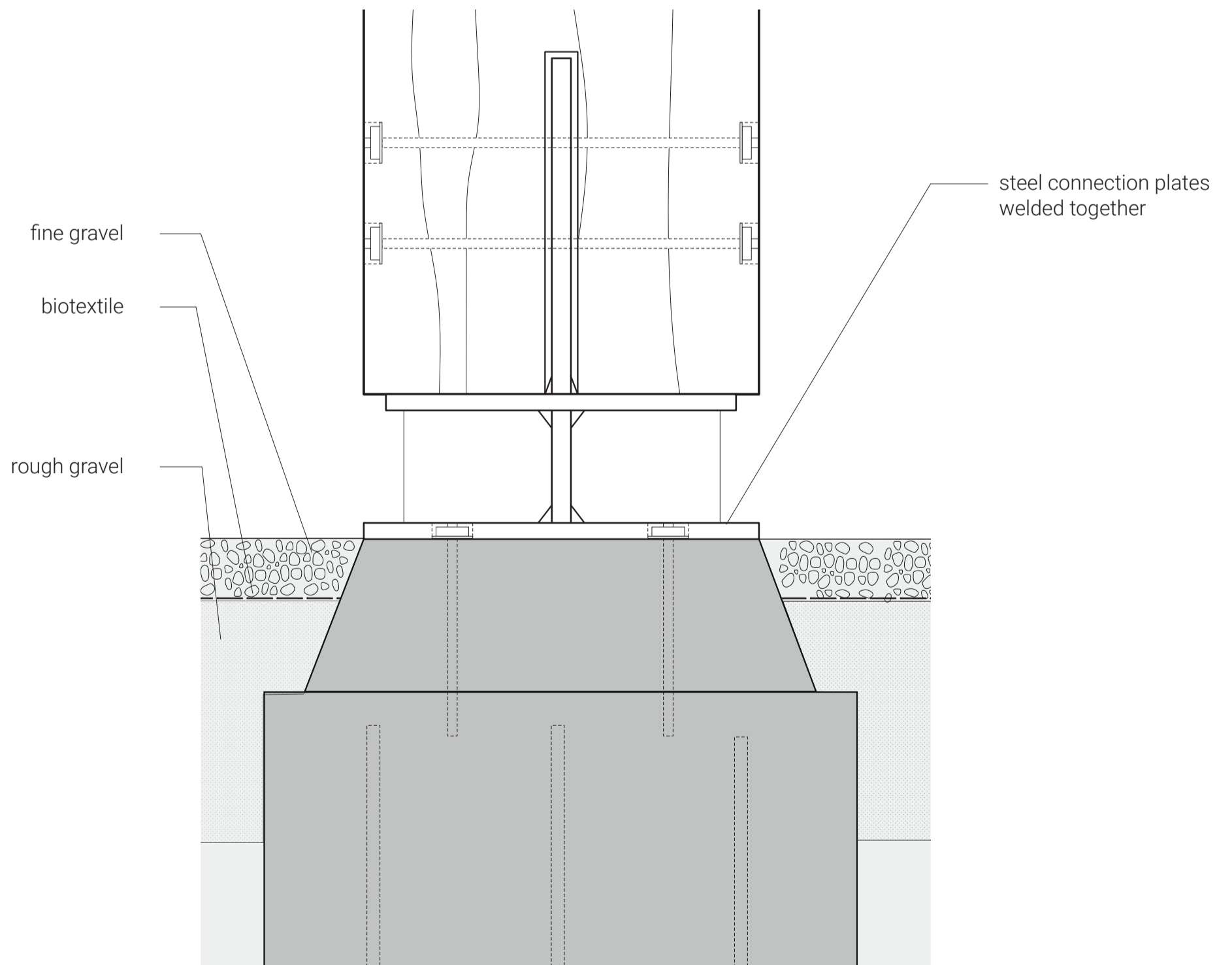
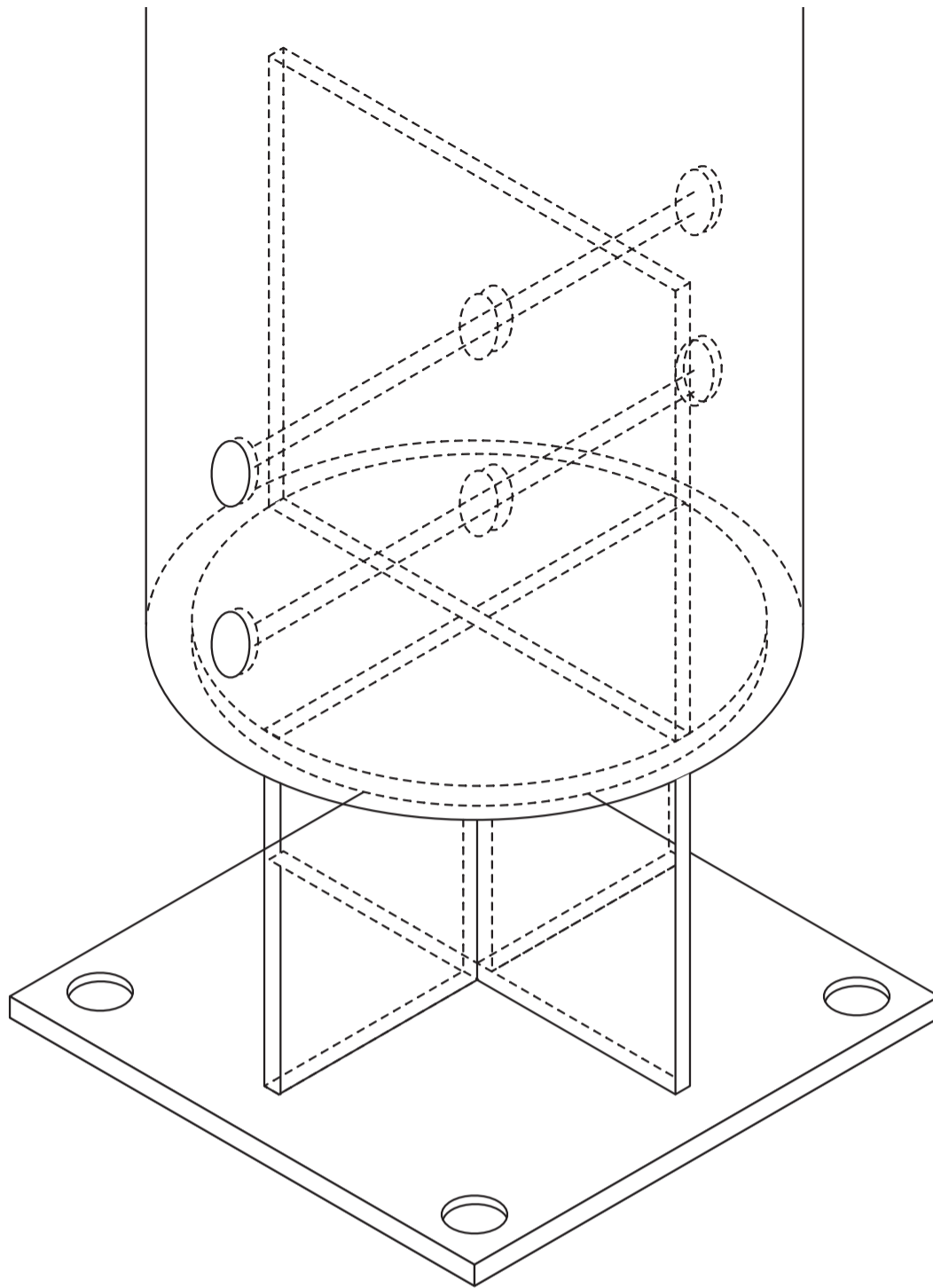
# DETAIL 4 1:5

connection wall with window to foundation



# DETAIL 5 1:5

connection column to foundation



fine gravel

biotextile

rough gravel

steel connection plates welded together

# DETAIL 6 1:5

connection railing to terrace

