

COMPLEX PROJECTS

TREFFPUNKT BERLIN

From Collections to Connections: An Intercultural Public Library in Gesundbrunnen

Drawing Set

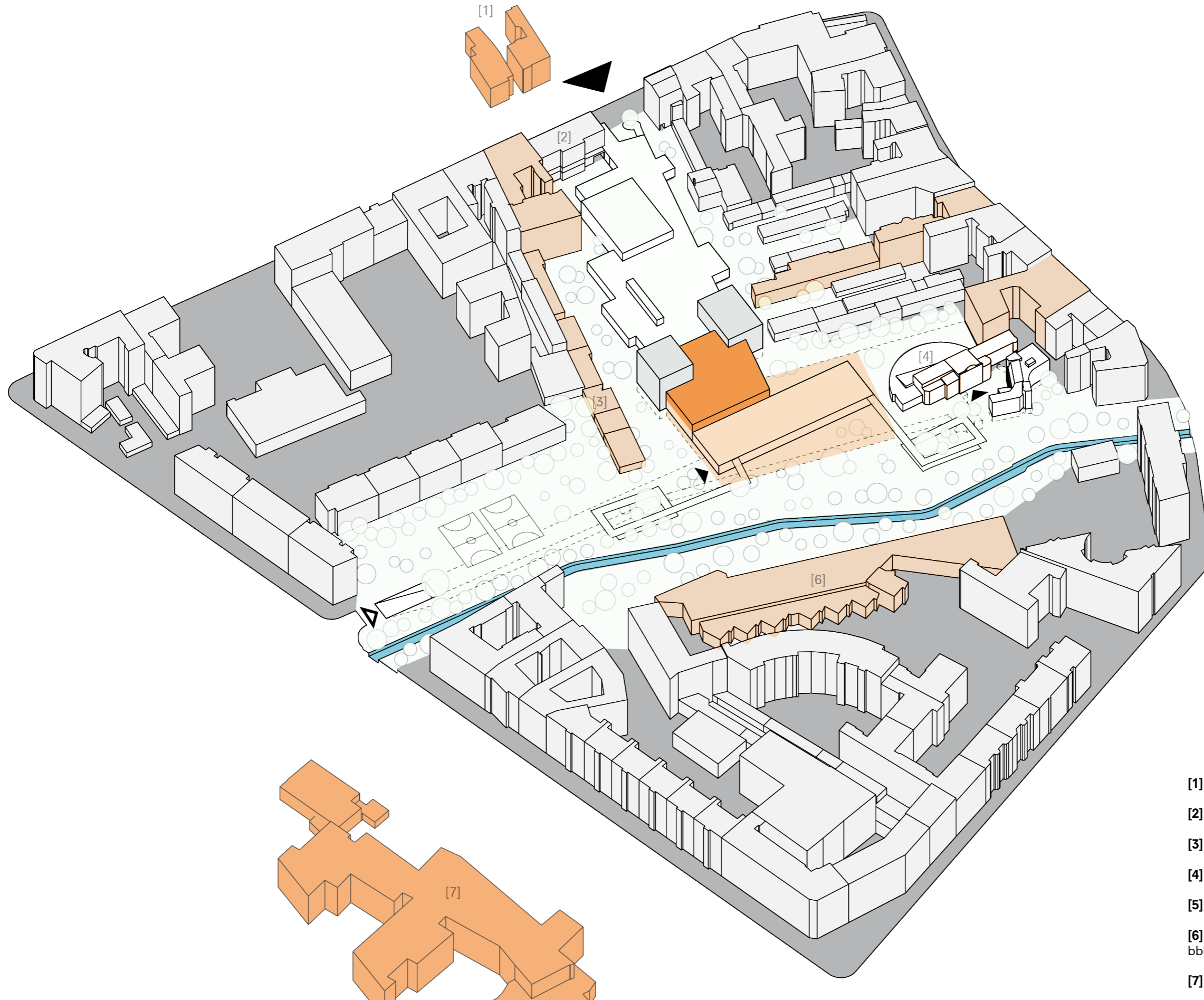
Yi Go

02/07/2024



Block Plan
1:5000 @ A3

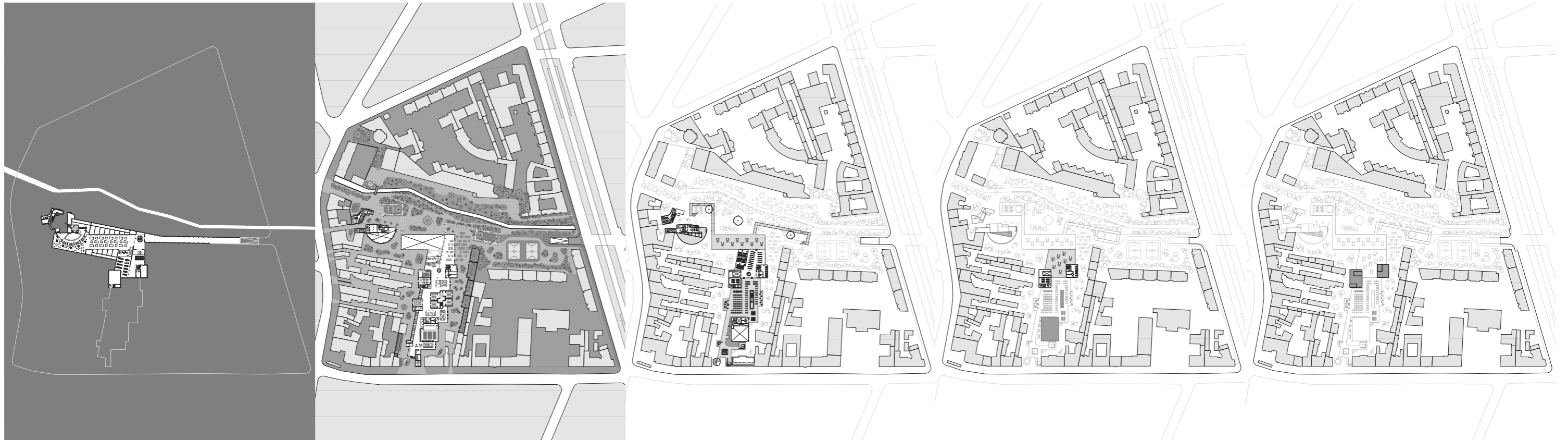




- [1] gesundbrunnen elementary school
- [2] physiotherapy centre
- [3] studios in protected monuments
- [4] bibliothek am luisenbad
- [5] music & dance school, uferstudios gmbh
- [6] sculpture workshops, bildhauerwerkstatt im kulturwerk des bbk berlin gmbh
- [7] specialised school

Block Axonometric





Underground Floor (-4.6)

Ground Floor (+0.0)

First Floor (+5.4)

Intermediate Floors (+10.2, 15.0, 19.8)

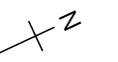
Roof Floors (+24.6)

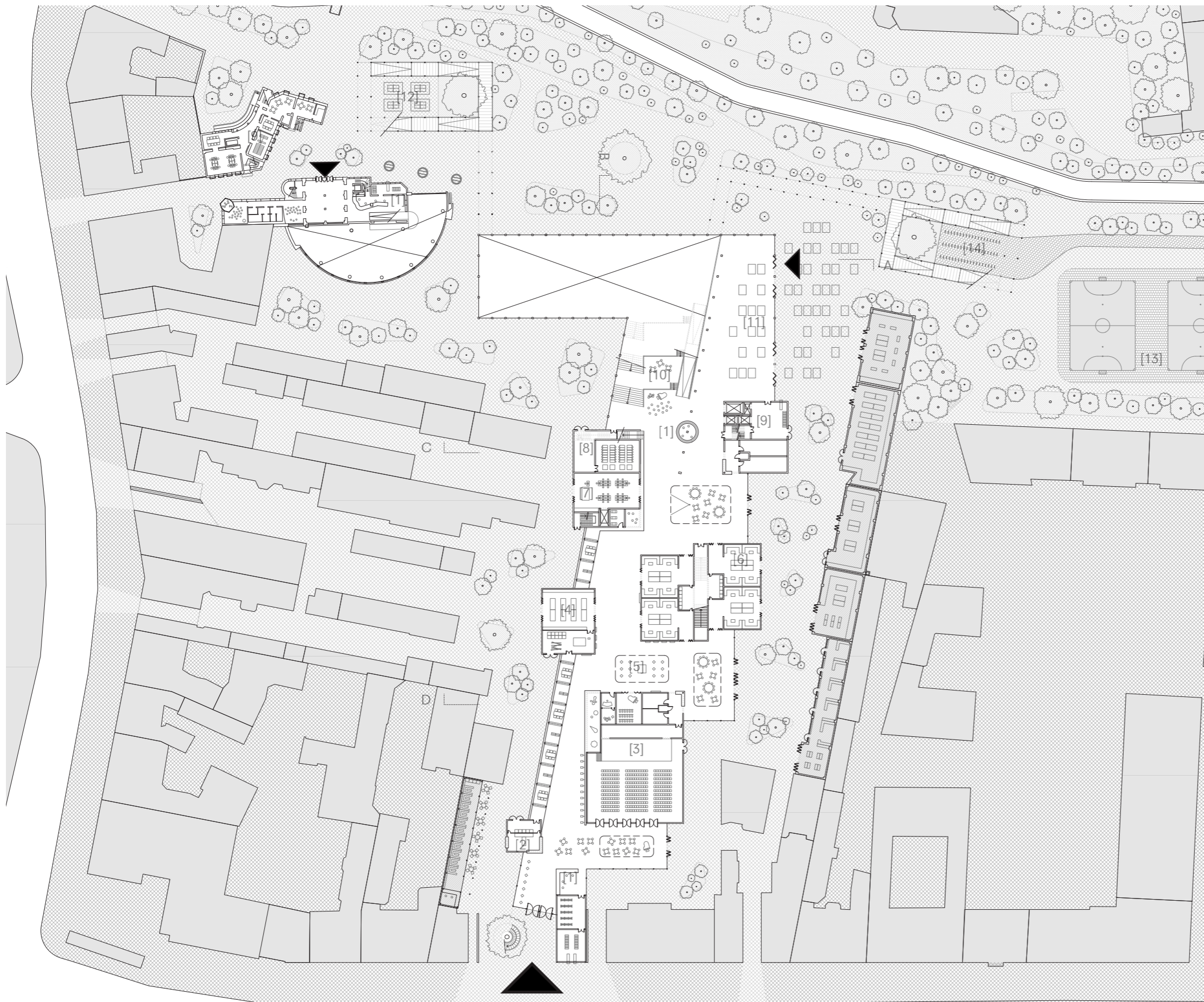


- [1] arena
- [2] covered playground
- [3] market
- [4] meeting steps
- [5] logistics ent. turntable & control
- [6] loading dock & sorting area
- [7] temporary storage
- [8] plant room with geothermal closed-loop heat pump
- [9] rainwater collection tanks

Plan - Underground Floor (-4.6)

1:200 @ 2A0

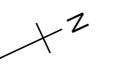




- [1] reception
- [2] cafe
- [3] performance hall & music studios
- [4] crafts studio
- [5] exhibition area
- [6] cooking studios
- [7] digital studio & vr experience
- [8] edge data centre
- [9] offices
- [10] happy steps
- [11] informal market
- [12] ping-pong tables
- [13] futsal courts
- [14] bike parking

Plan - Ground Floor (+0.0)

1:200 @ 2A0

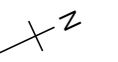




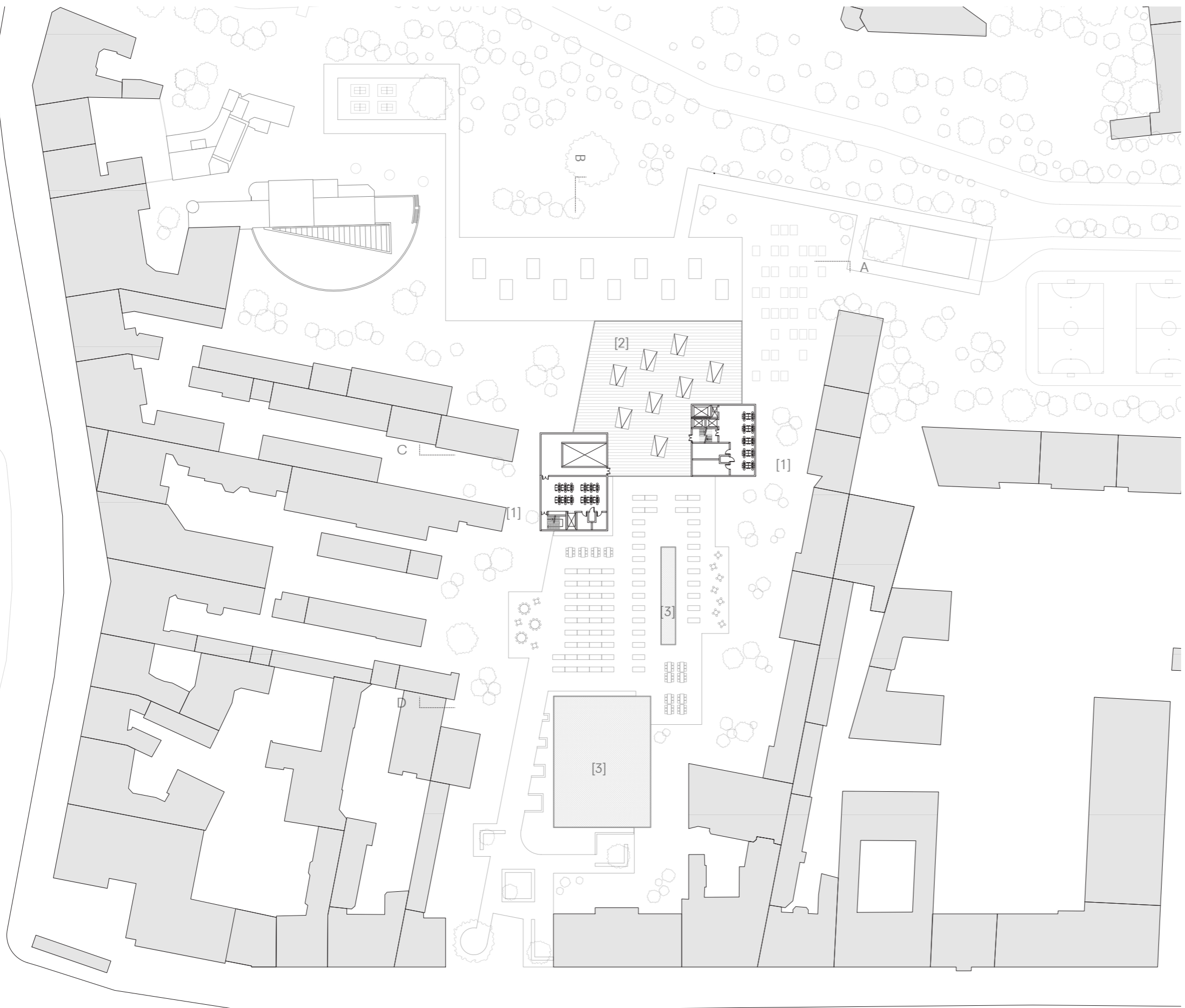
- [1] spiral stairs/ramp to public roof
- [2] community garden plots
- [3] community garden worktables
- [4] offices
- [5] individual study cells
- [6] classrooms
- [7] collections
- [8] sunset deck

Plan - First Floor (+5.4)

1:200 @ 2A0

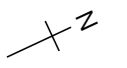


- [1] offices
- [2] staff-only roof
- [3] extensive green roof



Plan - Upper Floors (+10.2, 15.0, 19.8)

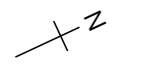
1:200 @ 2A0

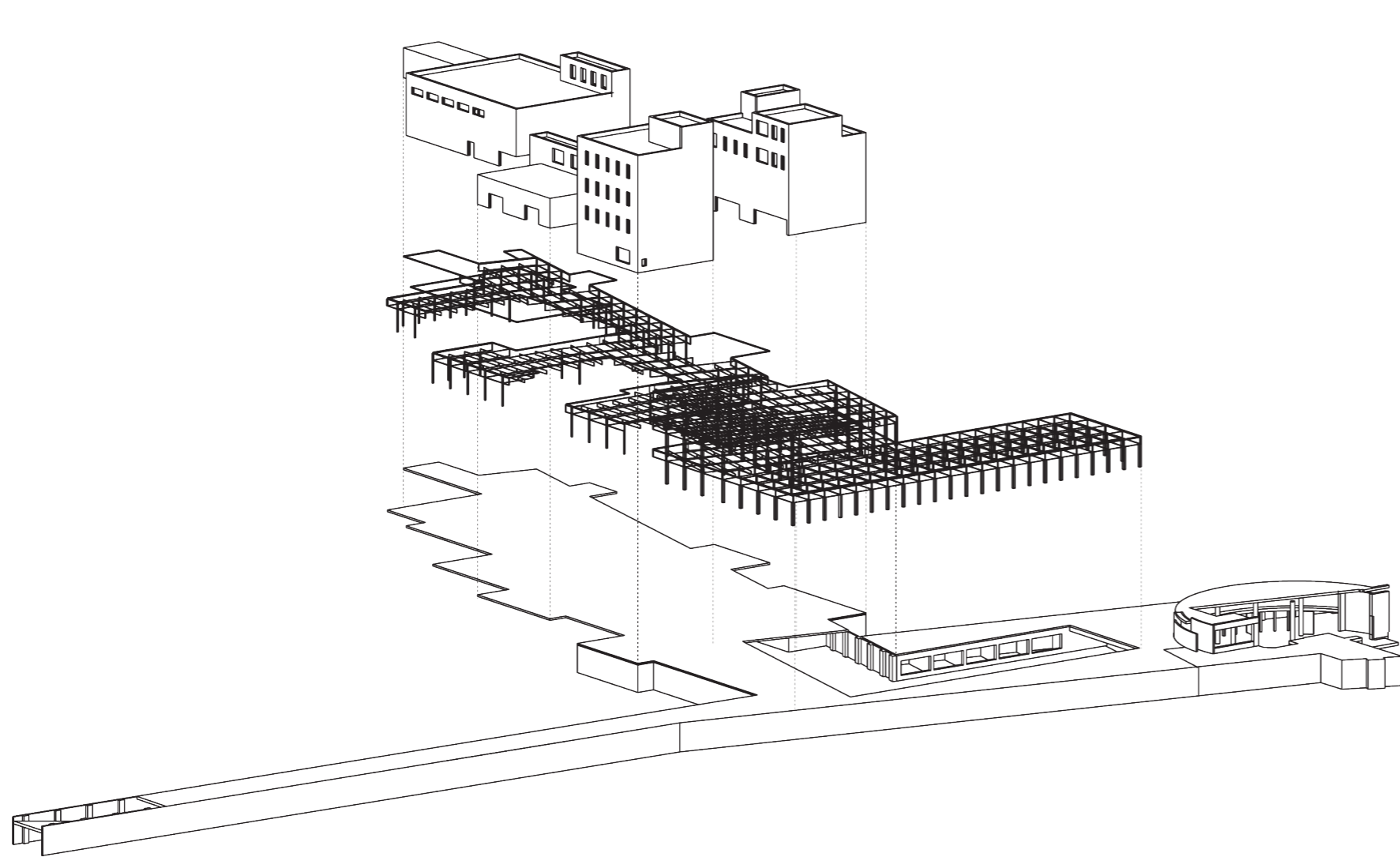


[1] extensive green roof



Plan - Roof
1:200 @ 2A0





dry construction

closed masses

175mm CLT walls + 300mm CLT slabs
spanning 8.5m

open grid "infill"

glulam columns & beams + 175mm CLT slab
spanning 20m

base

concrete slab, retaining wall & foundation



Framing Plan

1:200 @ 2A0



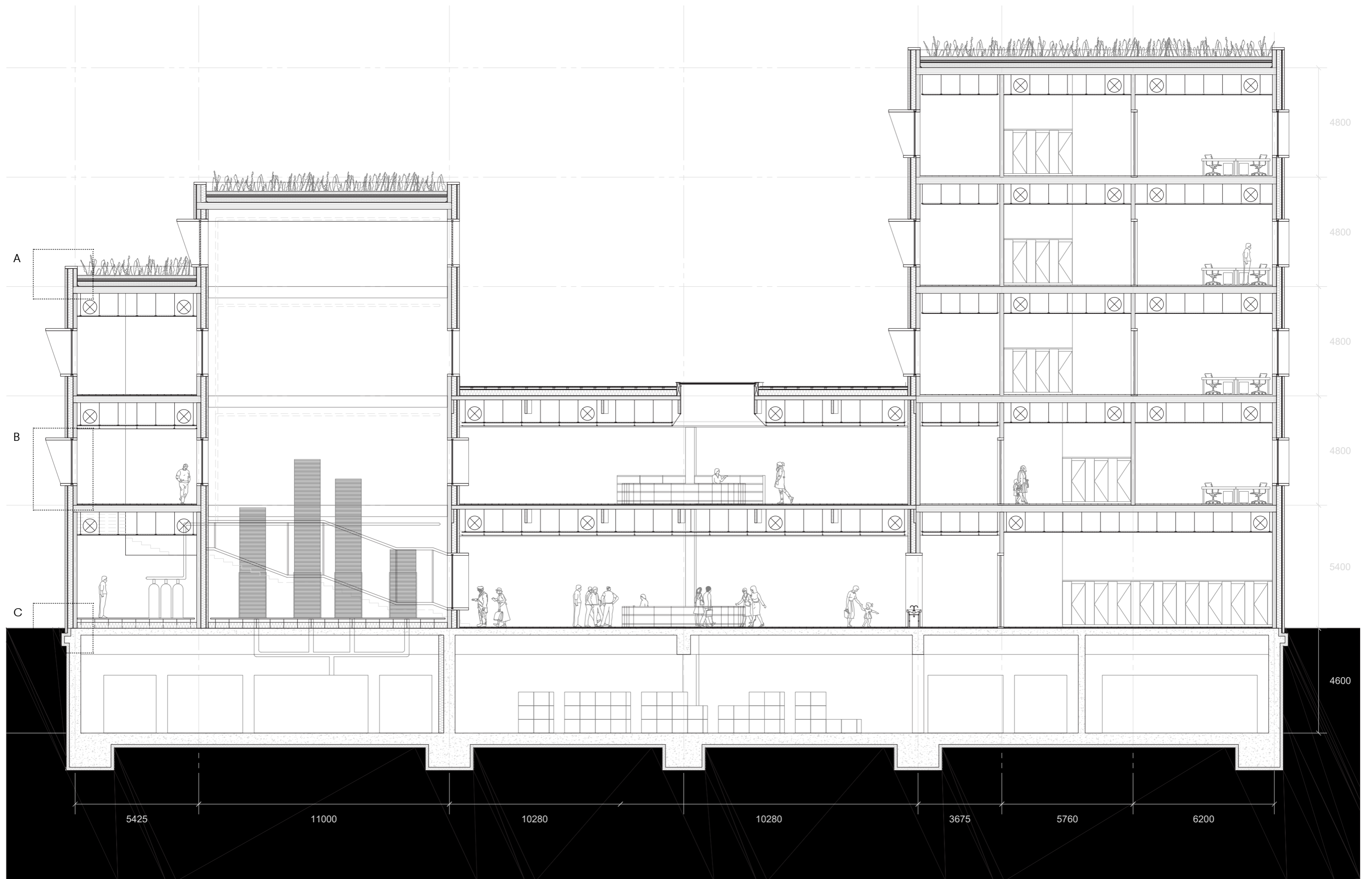
A-A



B-B

Long Sections

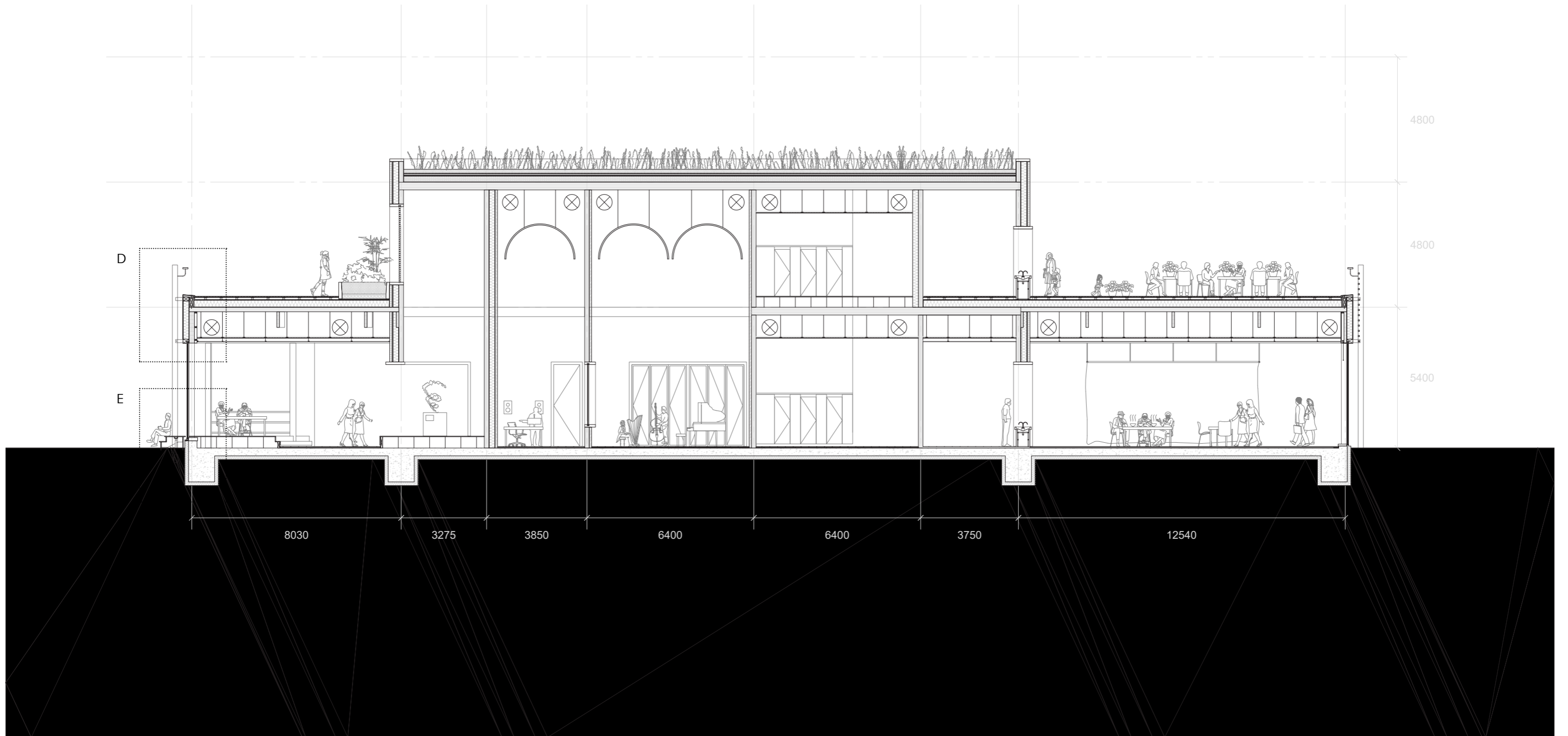
1:200 @ 2A0



Short Sections

1:50 @ A0

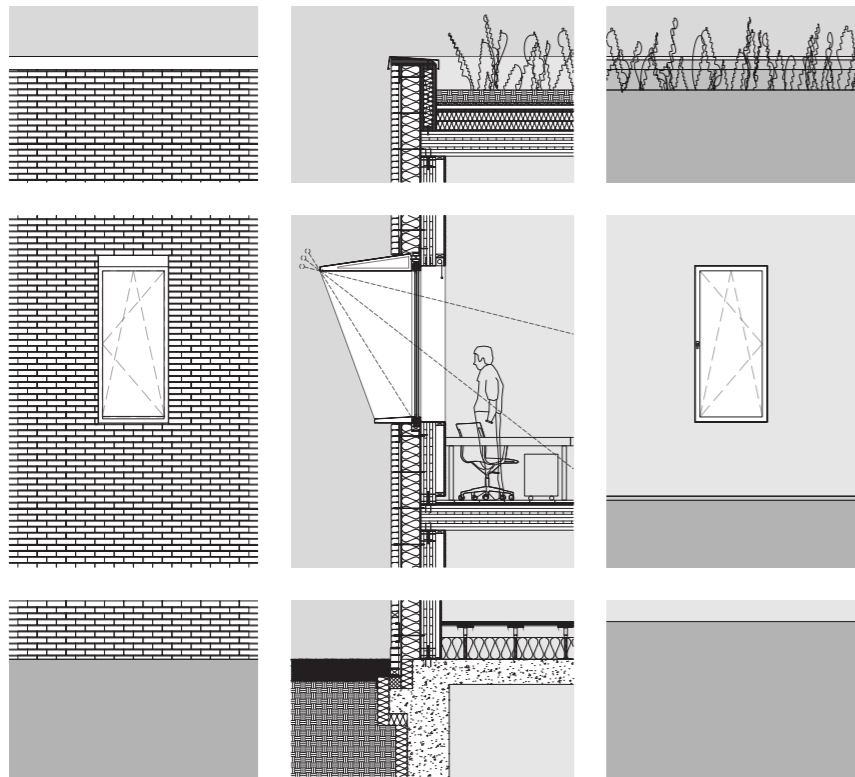
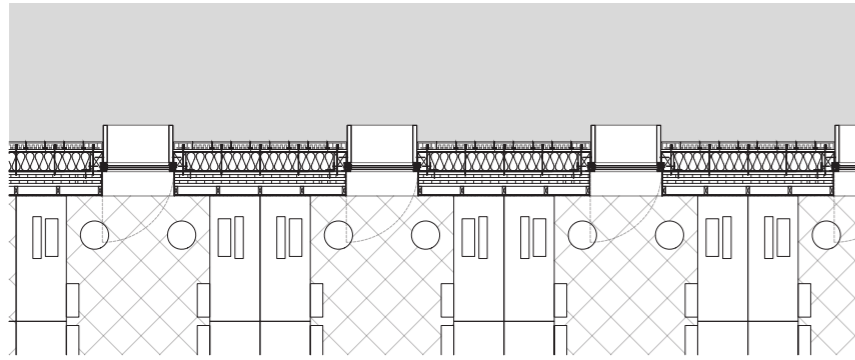
C-C



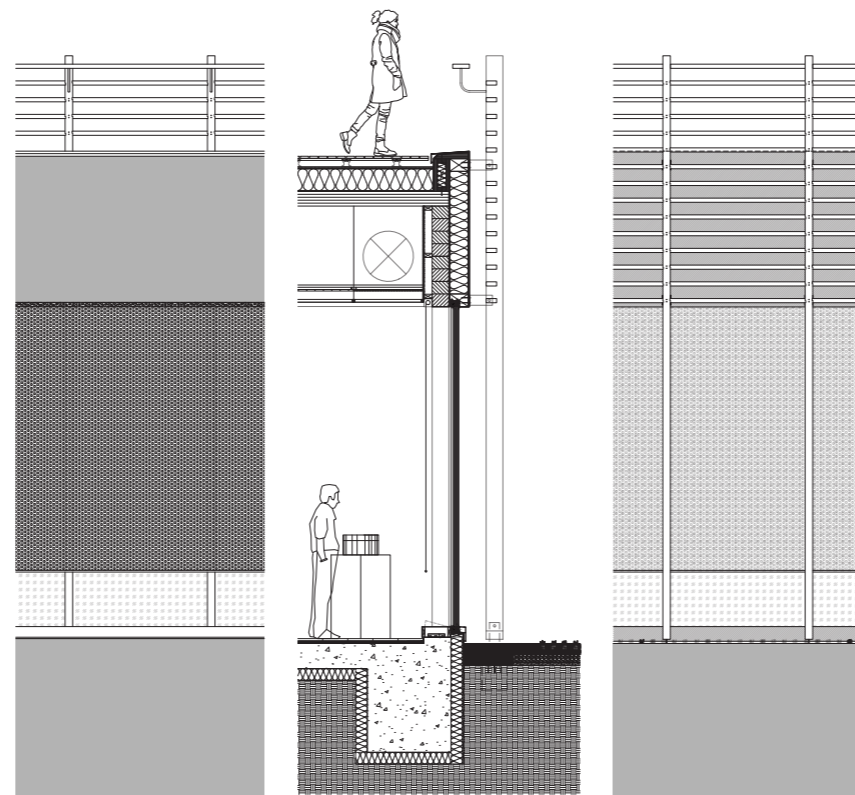
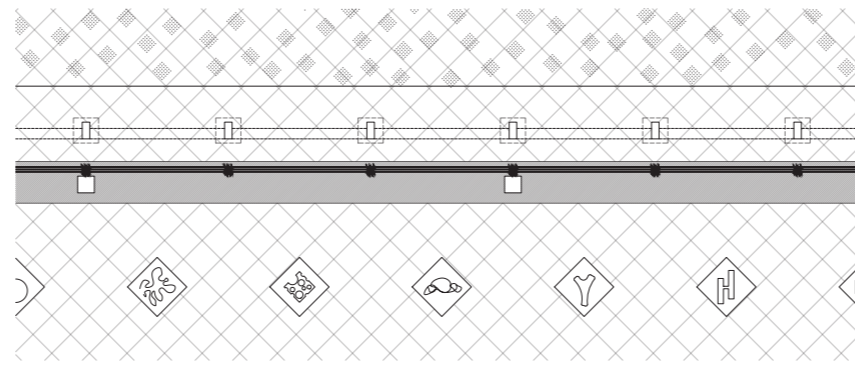
Short Sections

1:50 @ A0

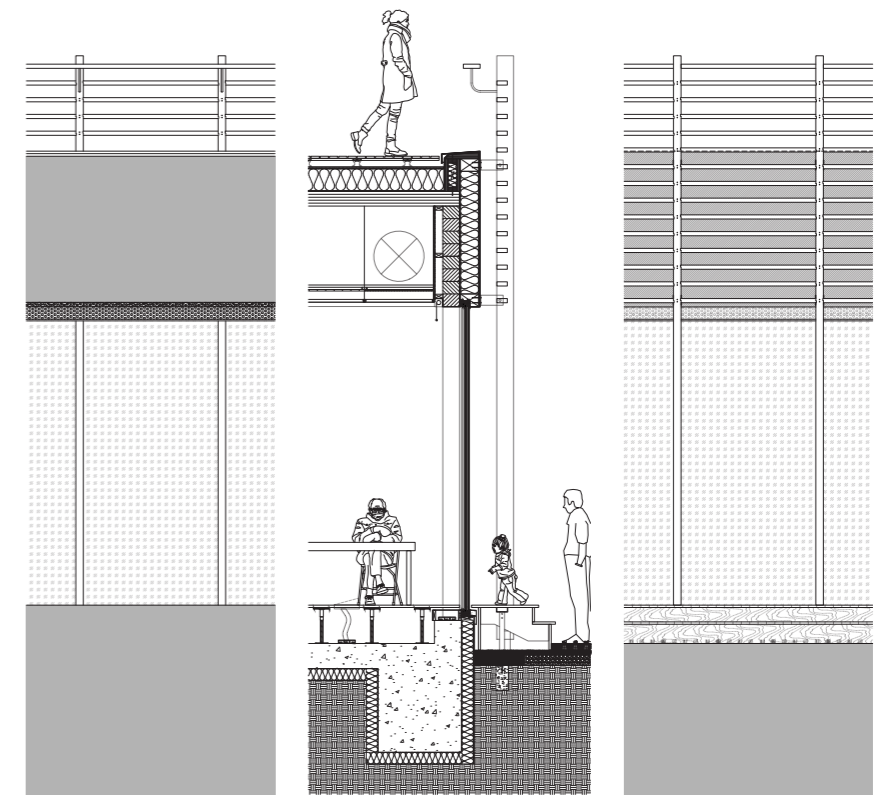
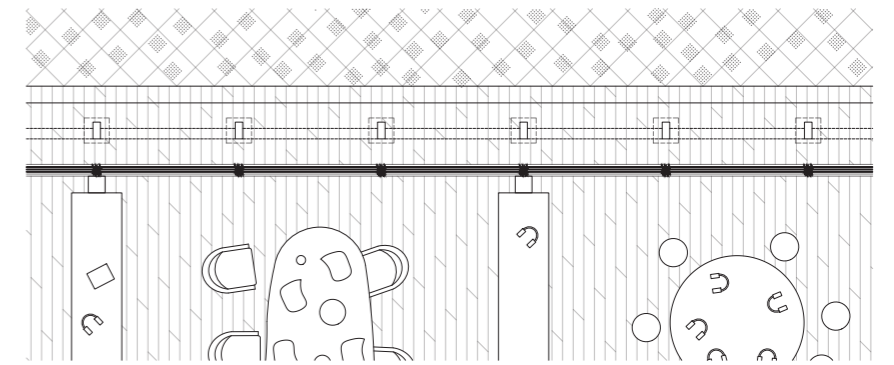
D-D



Closed Mass Facade (Detail A, B, C)



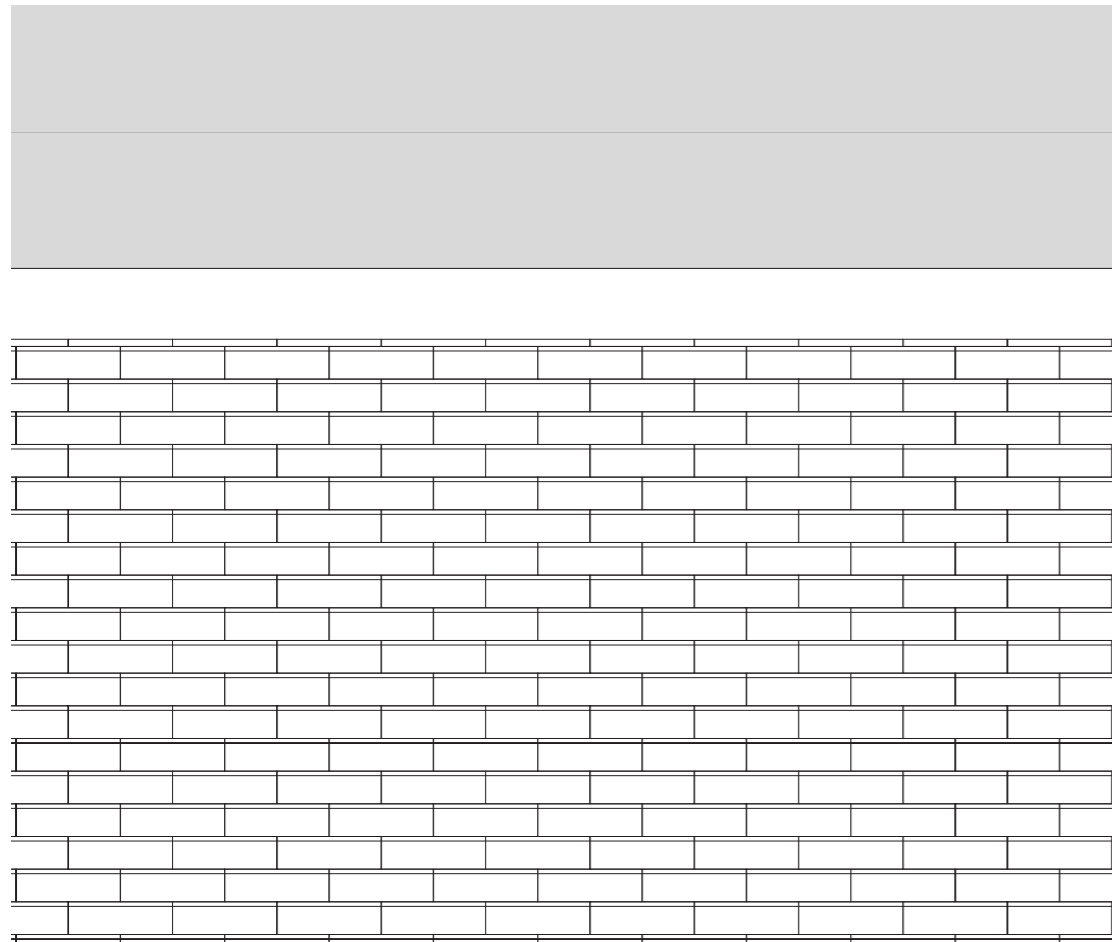
Open Space Facade - Typical Situation (Detail D, E1)



Open Space Facade - Wood Deck Situation (Detail D, E2)

Facade Details Overview

1:20 @ A0



[1] 3mm thk aluminium capping

[2] S/S termination clamp for dry-stack brick system

Extensive Green Roof
($u = 0.11 \text{ W/m}^2\text{K}$)

Drought-tolerant perennials, herbs, sedum species

150mm growing medium

30mm filter fabric

50mm drainage layer

20mm root barrier

waterproofing

220mm XPS ($\lambda = 0.035 \text{ W/(mK)}$)

EPDM waterproofing

300mm (8ss) CLT slab

Dry-stack Brick Facade
($u = 0.18 \text{ W/m}^2\text{K}$)

90mm dry-stack brick with S/S tie every six rows, two stretchers

25mm air gap

waterproofing

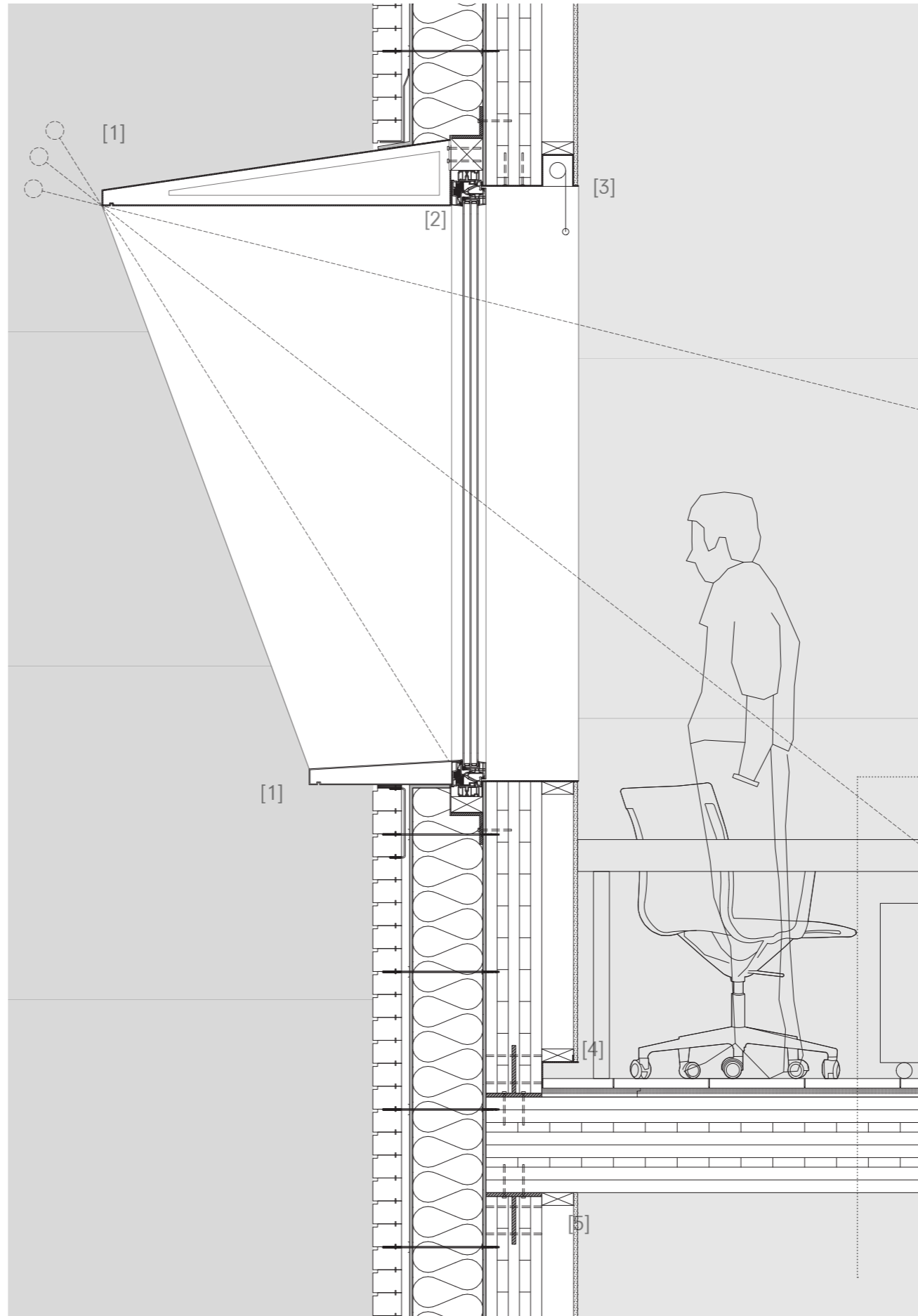
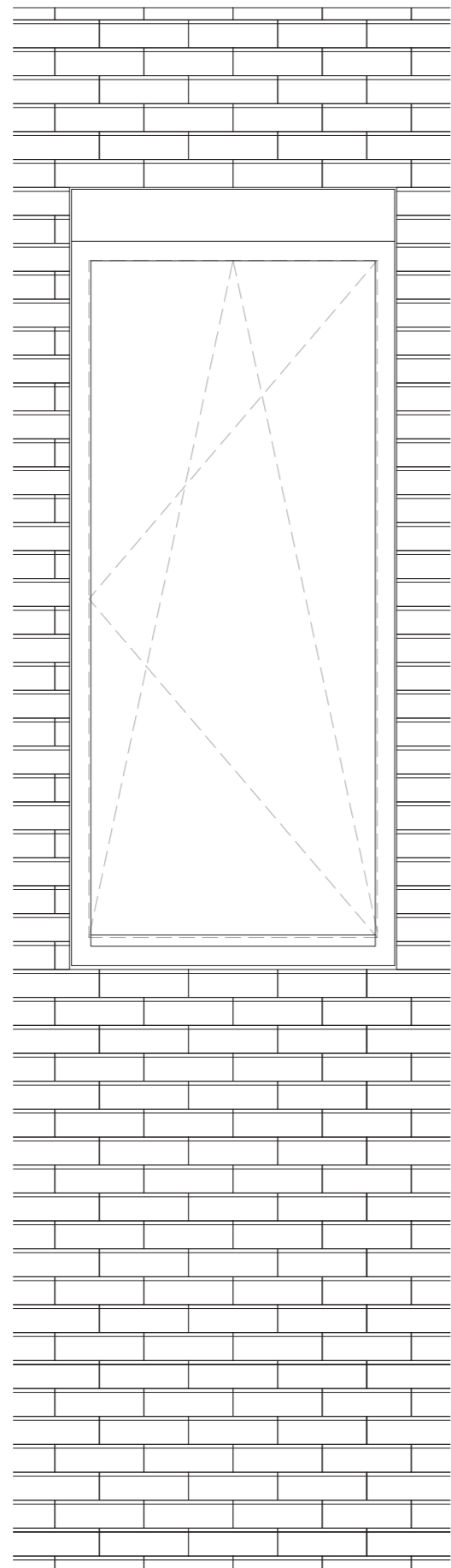
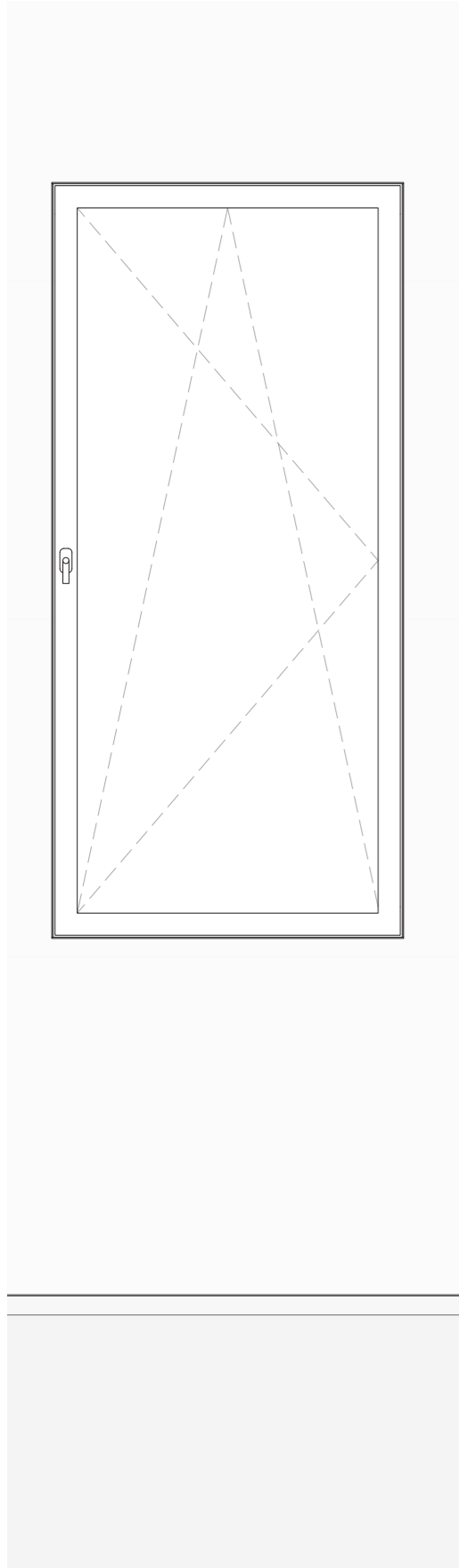
220mm wood fibre insulation boards ($\lambda = 0.044 \text{ W/(mK)}$)

damp proof membrane

175mm CLT wall

Facade Elevation & Detailed Section A

1:5 @ A0



- [1]** 3mm aluminium canopy supported by steel console bolted to wood blocking
- [2]** Triple glazed openable window with aluminium frame ($u = 0.8 \text{ W/m}^2\text{K}$)
- [3]** Internal sunshade curtain
- [4]** Recessed aluminium skirting
- [5]** Concealed metal plate bolted to slab, secured with tight fit dowels

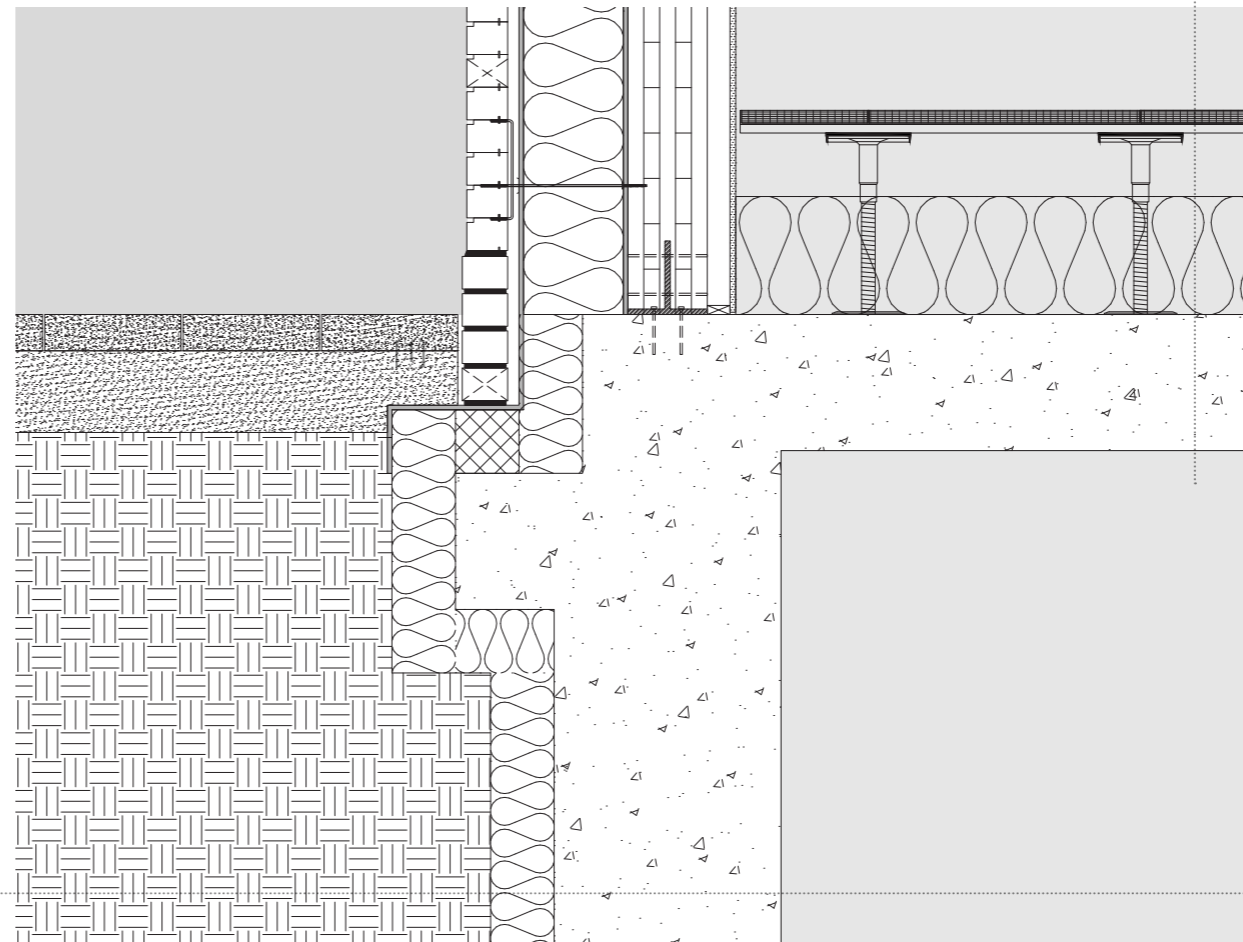
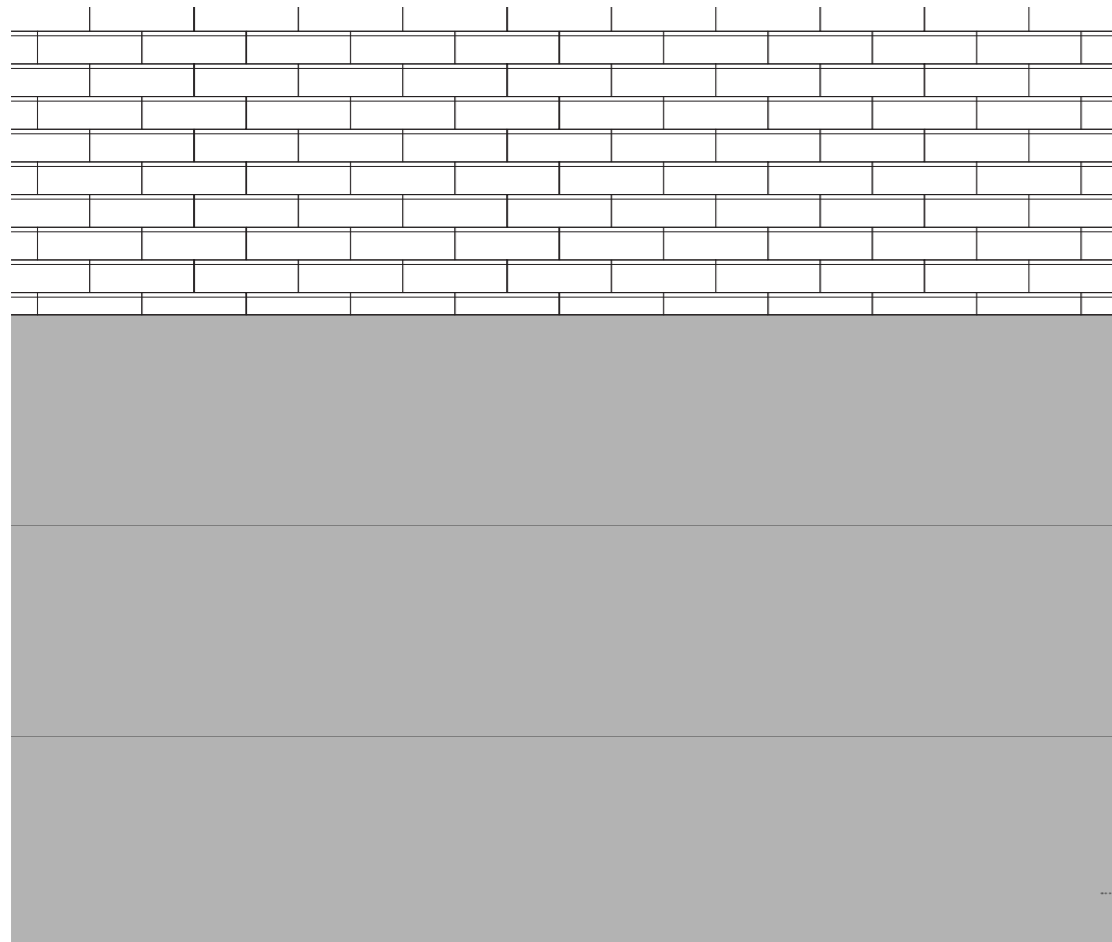
Floor

- 30mm dry laid ceramic tiles with cork backing
- 28mm dry floor screed gypsum fibreboard with wood fibre backing
- 300mm (8ss) CLT slab

Facade Elevation & Detailed Section B

1:5 @ A0

[1] Brick ledge supporting dry-stack brick system



Raised Flooring for Data Centre

32mm thk, 600x600mm panels with air flow perforations where necessary

Pedestals bolted to 300mm concrete slab

Underground
($u = 0.23 \text{ W/m}^2\text{K}$)

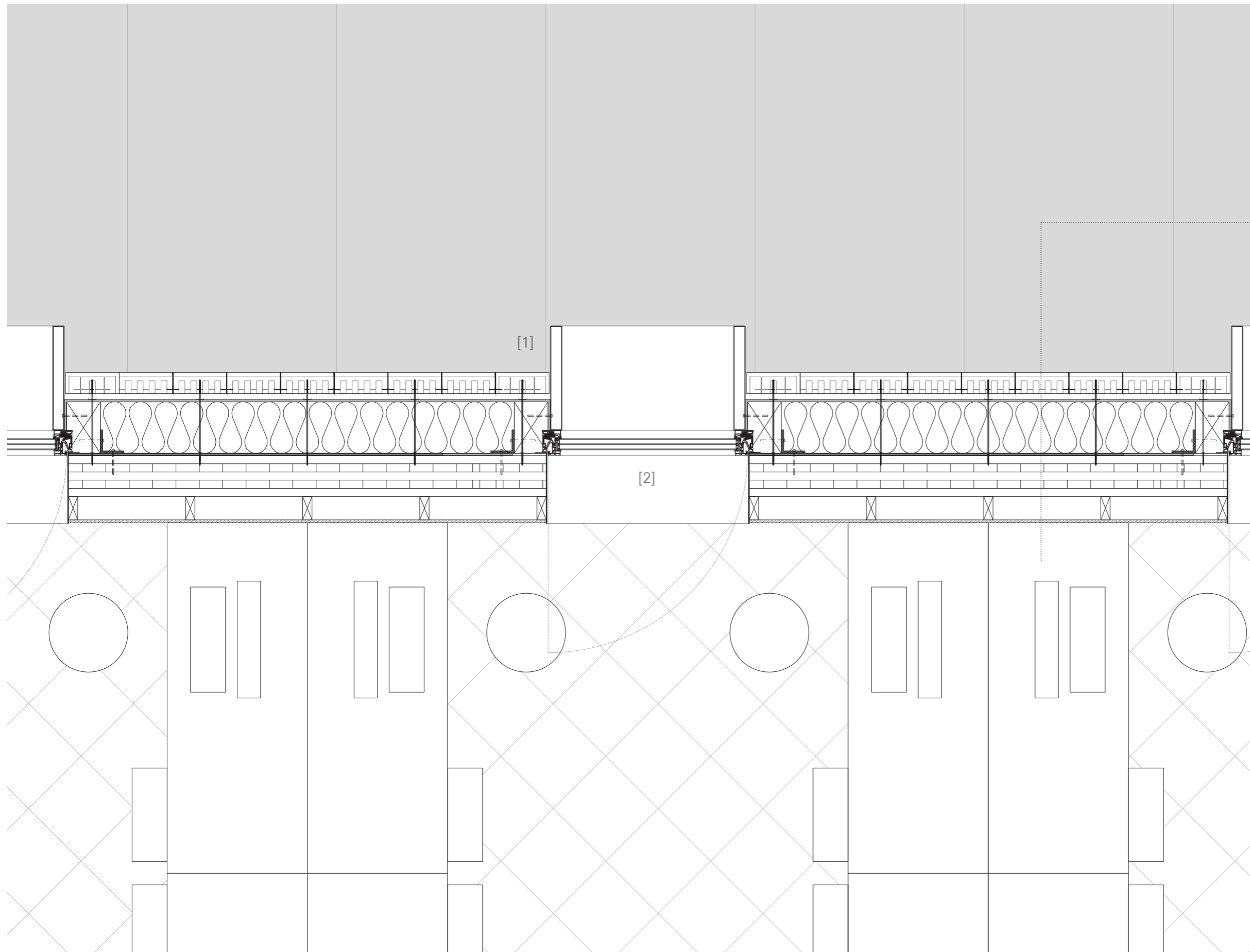
waterproofing

140mm XPS ($\lambda = 0.35 \text{ W/(mK)}$)

500mm concrete wall

Facade Elevation & Detailed Section C

1:5 @ A0



[1] 3mm aluminium canopy supported by steel console bolted to wood blocking

[2] Triple glazed openable window with aluminium frame ($u = 0.8 \text{ W/m}^2\text{K}$)

Dry-stack Brick Facade
($u = 0.18 \text{ W/m}^2\text{K}$)

90mm dry-stack brick with S/S tie every six rows, two stretchers

25mm air gap

waterproofing

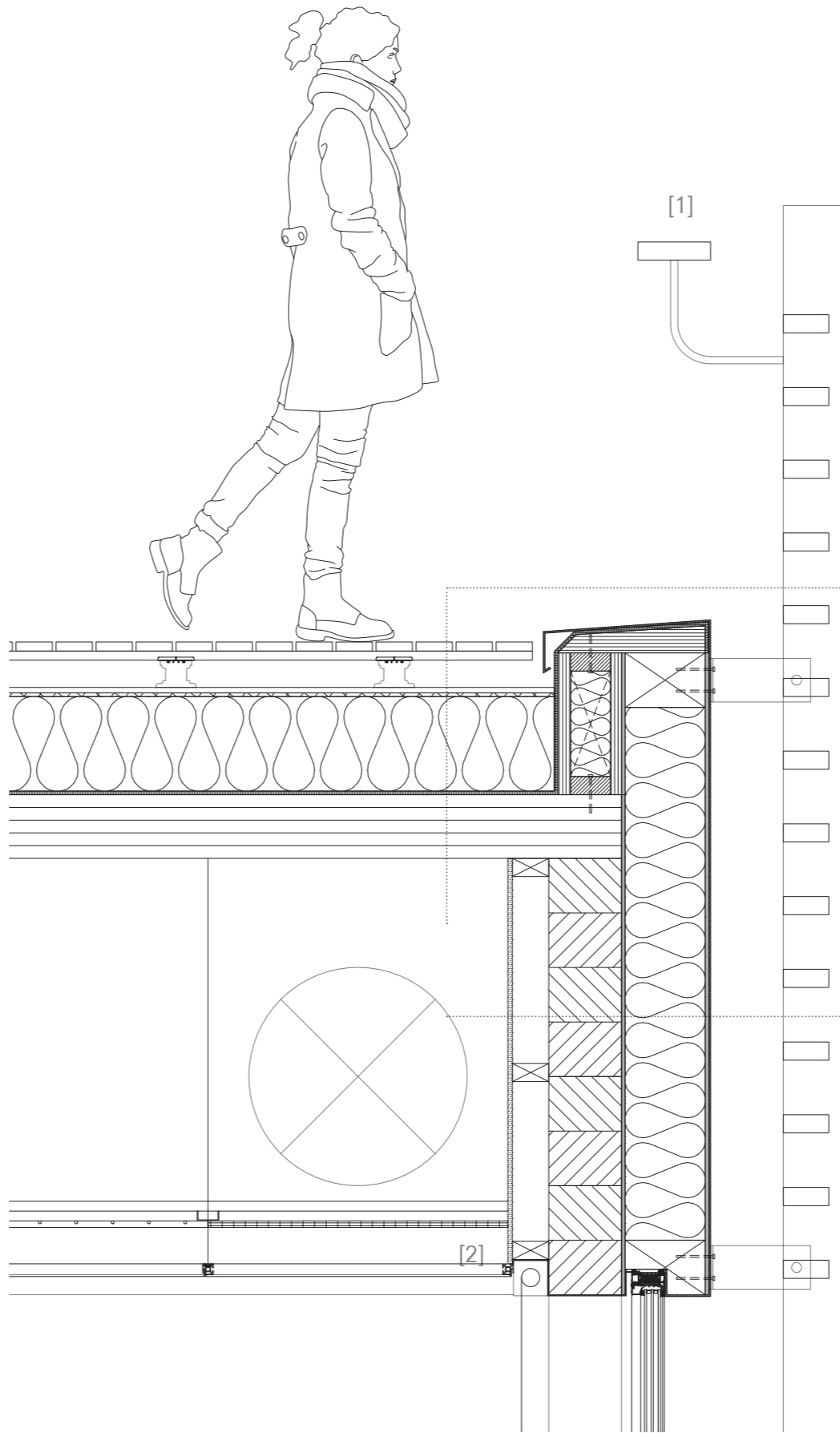
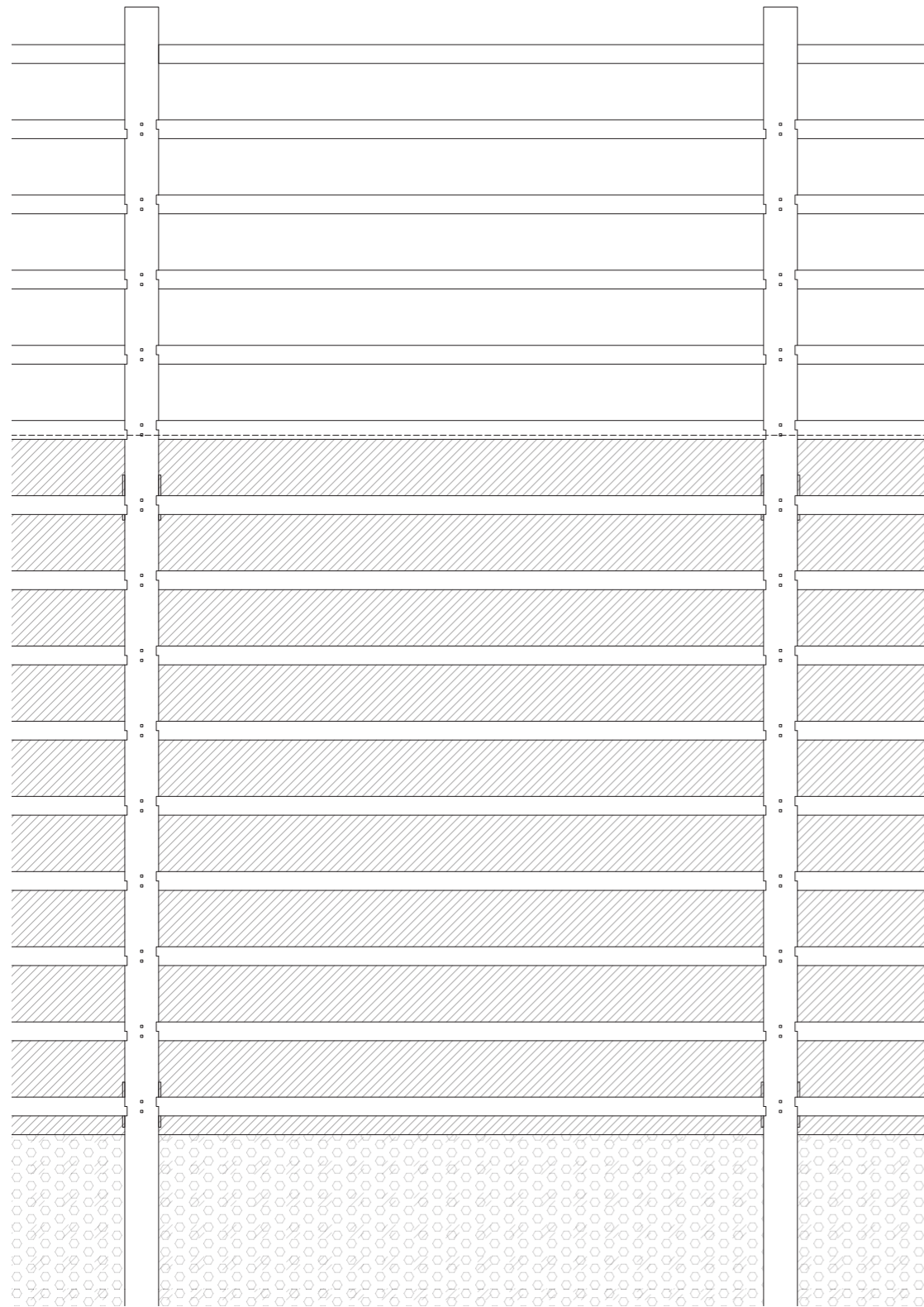
220mm wood fibre insulation boards
($\lambda = 0.44 \text{ W/(mK)}$)

damp proof membrane

175mm CLT wall

Facade Detailed Horizontal Section

1:5 @ A0



[1] 200x50mm aluminium handrail at 1m AFFL

[2] Internal sunscreen curtain

Roof Deck
($u = 0.109 \text{ W/m}^2\text{K}$)

Wood decking on pedestals

15mm gypsum protective roof board

EPDM waterproofing

260mm XPS ($\lambda = 0.35 \text{ W/(mK)}$)

damp proof membrane

175mm CLT

Freestanding Wood Batten Structure & Facade
($u = 0.18 \text{ W/m}^2\text{K}$)

200x90mm, 150x50mm pressure-treated spruce battens interlocked with ashikata joint; verticals fixed to steel profile bolted to blocking

3mm aluminium panel bolted to blocking

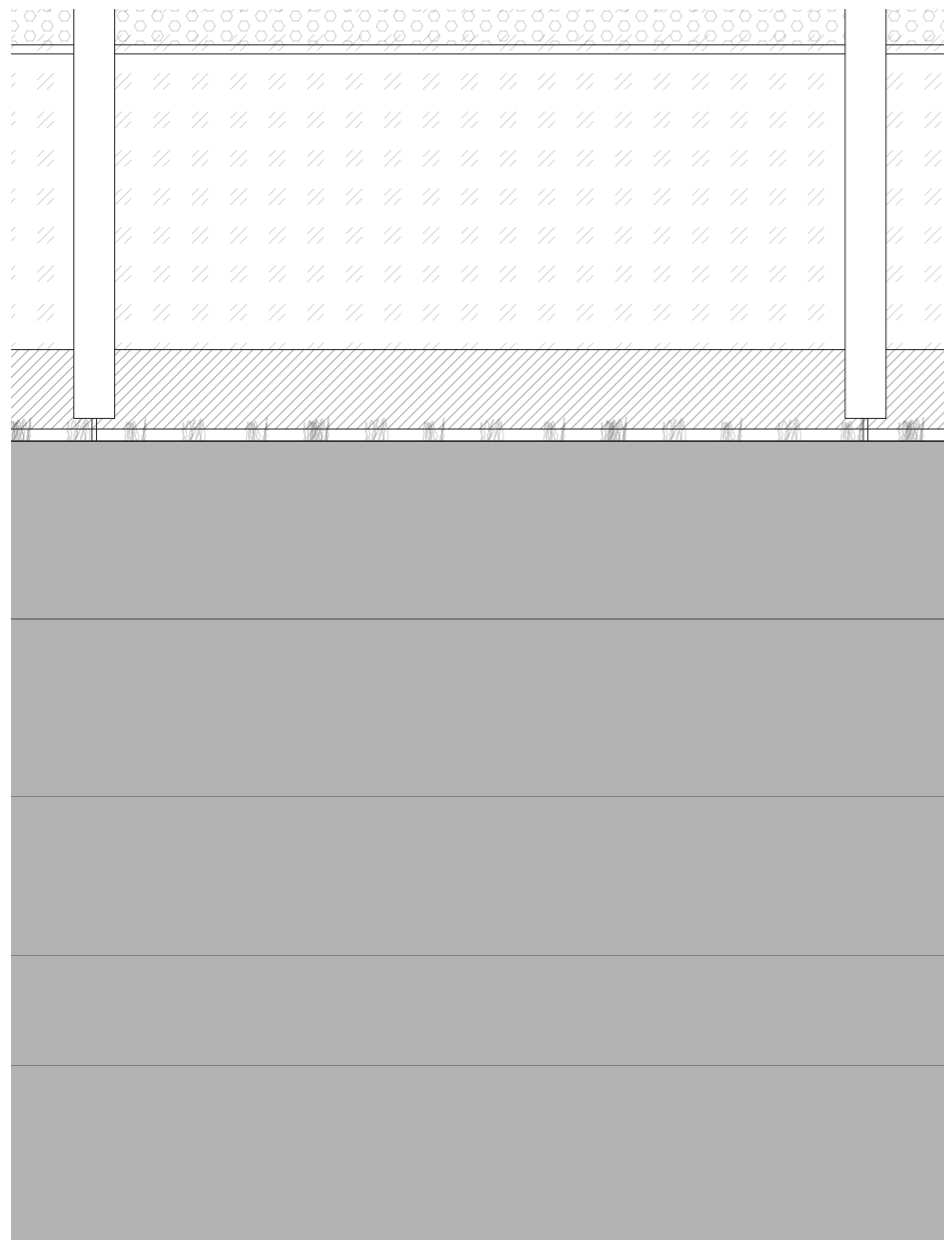
220mm wood fibre insulation boards ($\lambda = 0.44 \text{ W/(mK)}$)

waterproofing

1200x200mm glulam edge beam

Facade Elevation & Detailed Section D

1:5 @ A0



[1] separate footing for vertical facade element on raised column base

Floor
($u = 0.23 \text{ W/m}^2\text{K}$)

30mm dry laid ceramic tiles with cork backing

28mm dry floor screed gypsum fibreboard with wood fibre backing

300mm concrete slab

140mm XPS ($\lambda = 0.35 \text{ W/(mK)}$)

Outdoor Landscape Paving

80mm thk grass paving tiles

50mm bedding sand

100mm compacted aggregate soil

30mm filter fabric

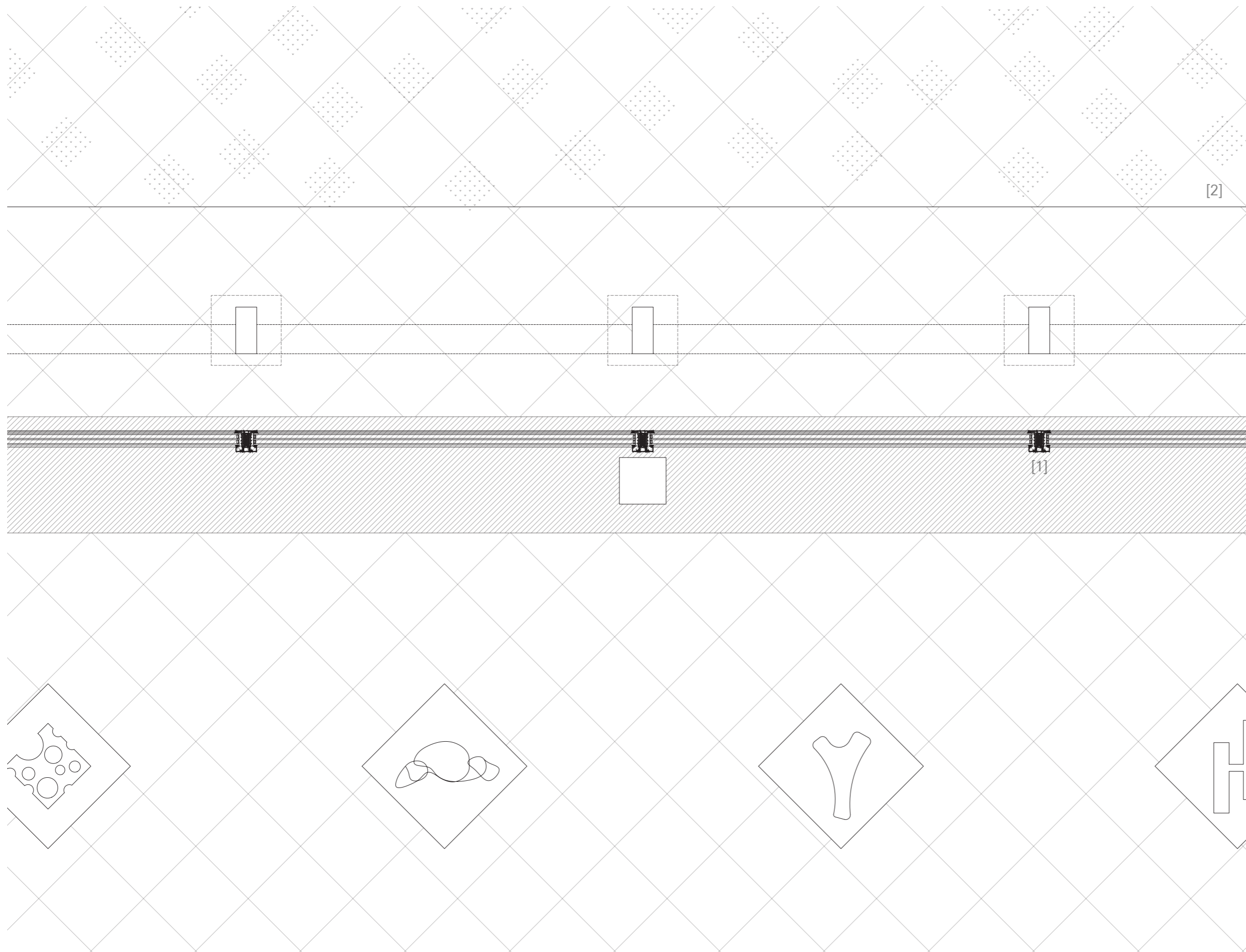
Compacted sub-grade soil

Facade Elevation & Detailed Section E1

1:5 @ A0

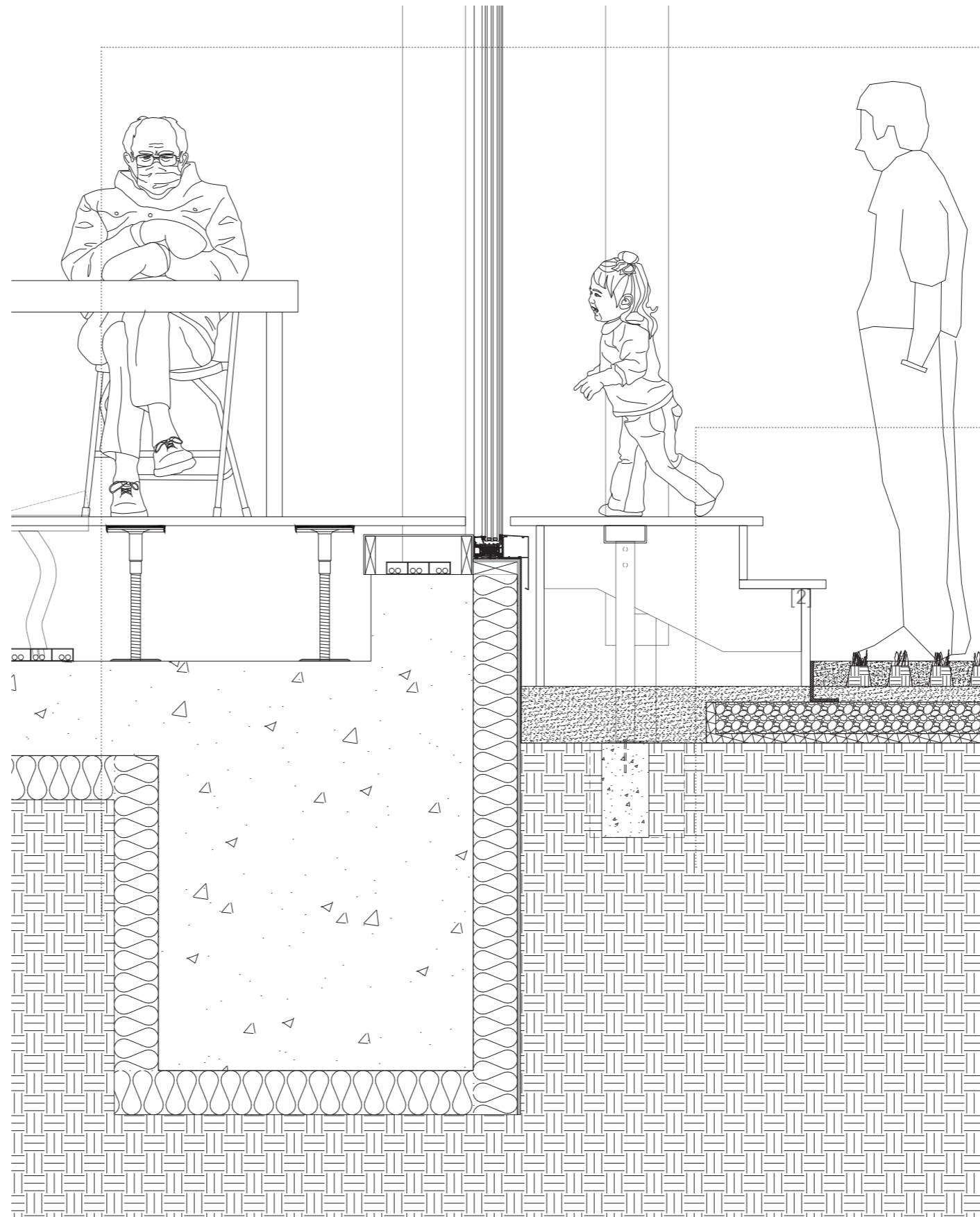
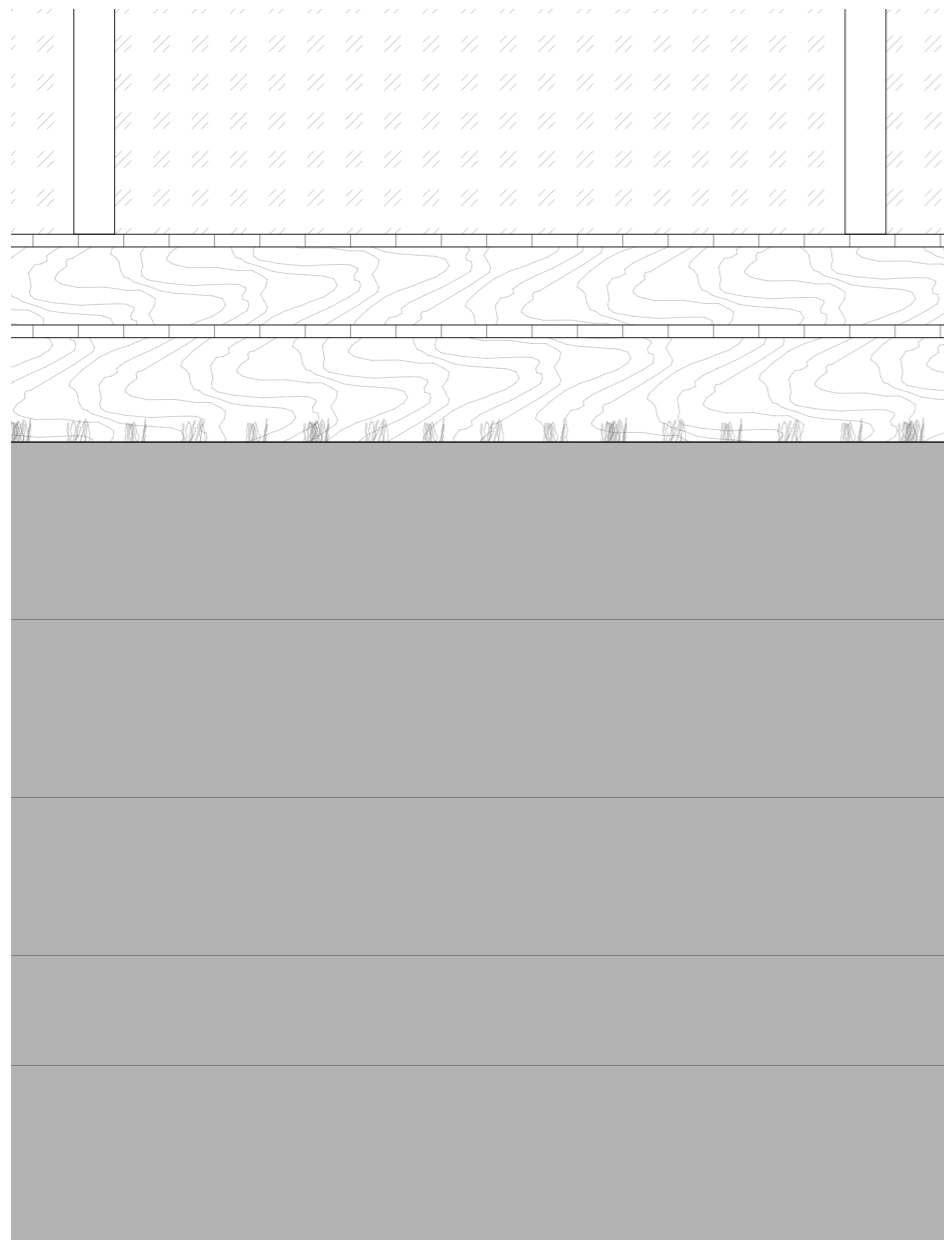
[1] triple glazed window wall with aluminium frame ($u = 0.8 \text{ W/m}^2\text{K}$)

[2] edge restraint between floor pavings



Facade Detailed Horizontal Section

1:5 @ A0



Floor
($u = 0.23 \text{ W/m}^2\text{K}$)

28mm raised wood deck on adjustable pedestals

300mm concrete slab

140mm XPS ($\lambda = 0.35 \text{ W/(mK)}$)

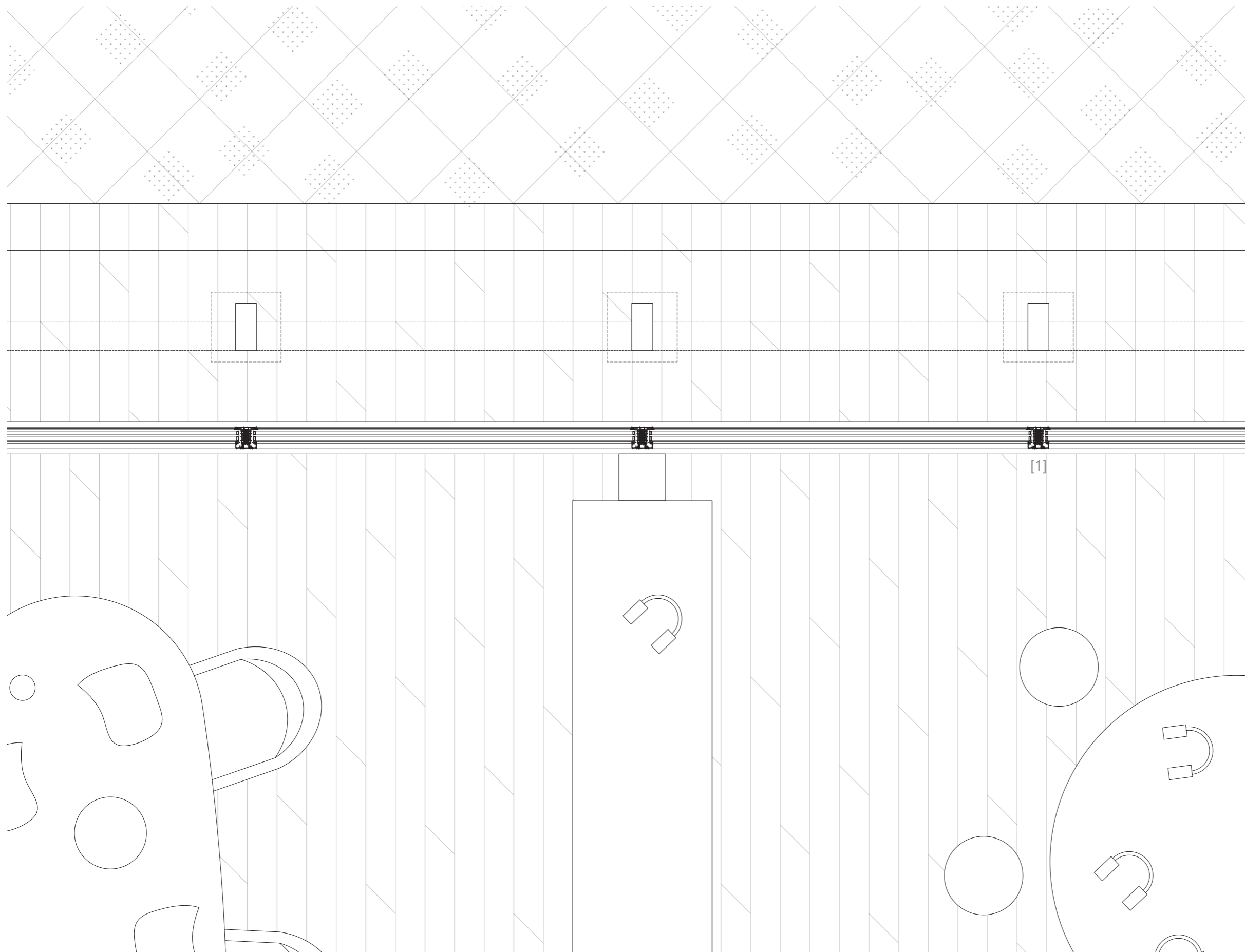
Outdoor Raised Deck

28mm raised wood deck supported by wood beam & stringers from freestanding wood batten facade

Facade Elevation & Detailed Section E2

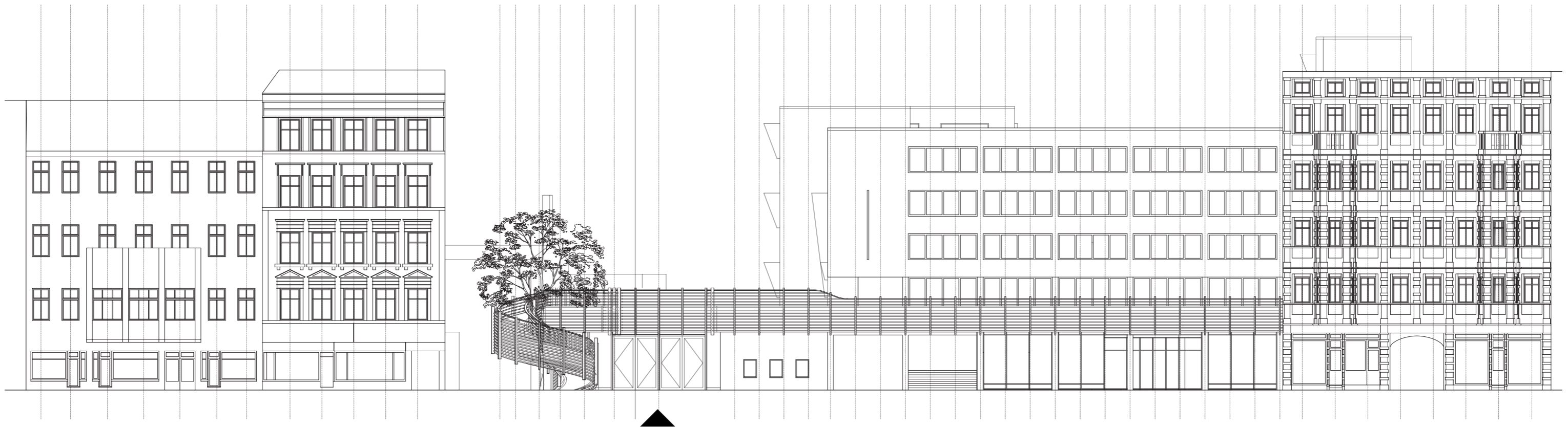
1:5 @ A0

[1] triple glazed window wall with aluminium frame ($u = 0.8 \text{ W/m}^2\text{K}$)



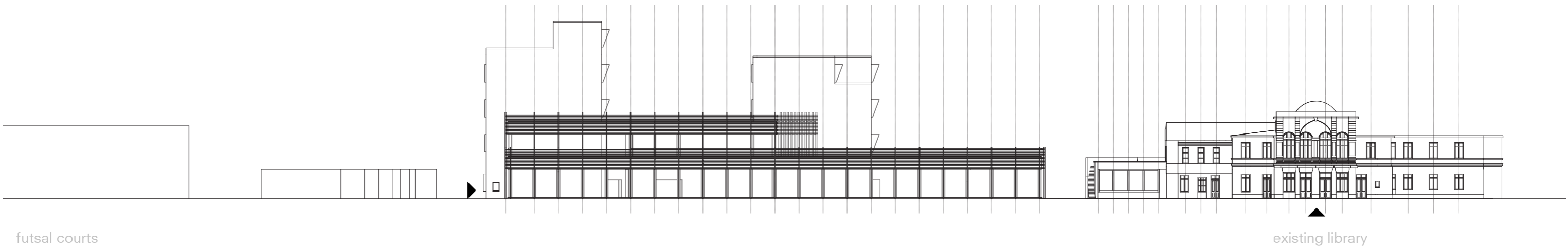
Facade Detailed Horizontal Section

1:5 @ A0



Facade Elevation - West

1:200 @ A0



Facade Elevations - South, East, North

1:200 @ A0