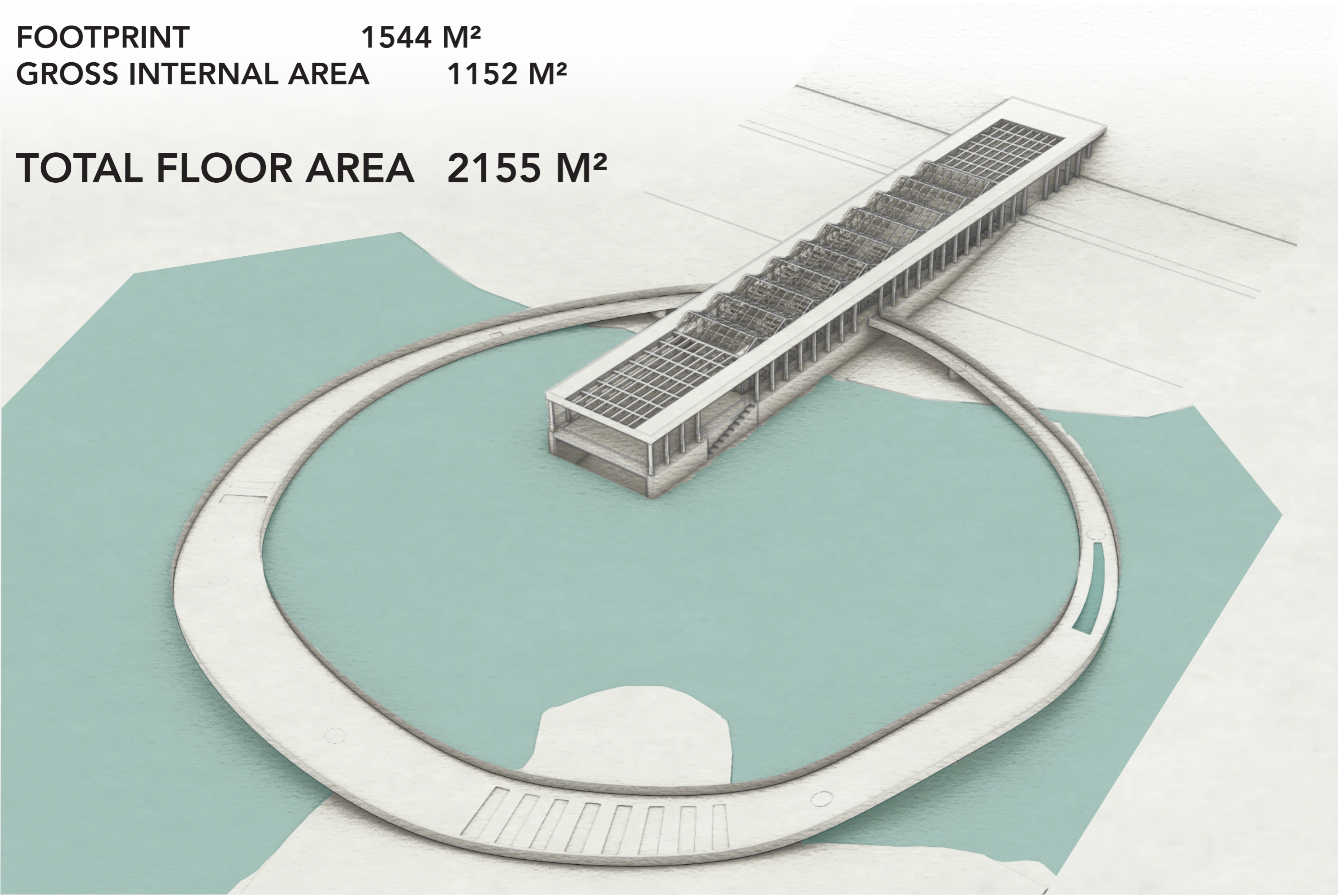


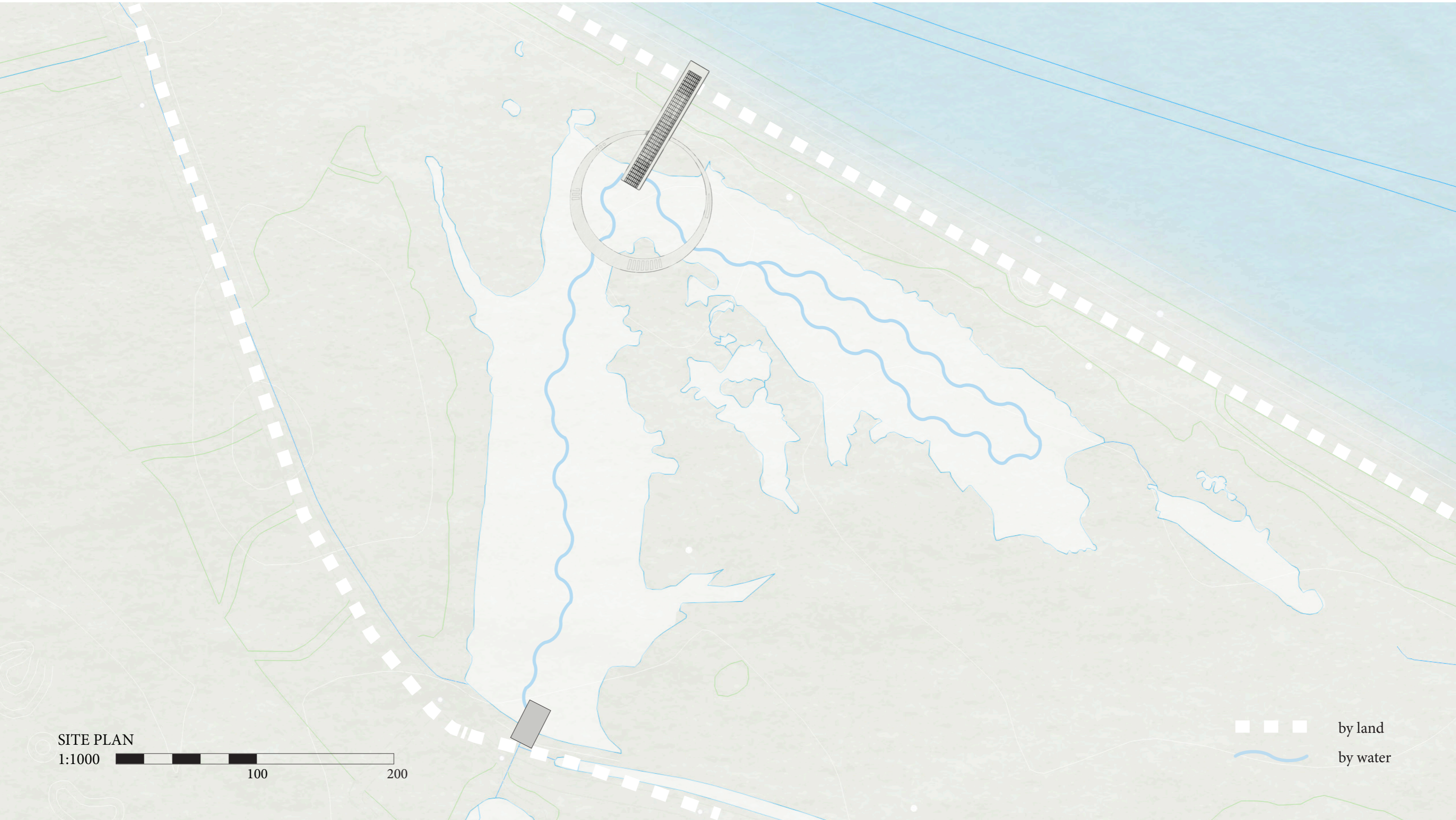
SUBMERGED

MARC KELLERMAN | T&A SUBMERGED

FOOTPRINT **1544 M²**
GROSS INTERNAL AREA **1152 M²**

TOTAL FLOOR AREA **2155 M²**





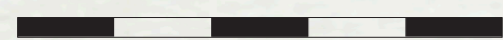
SITE PLAN

1:1000 100 200

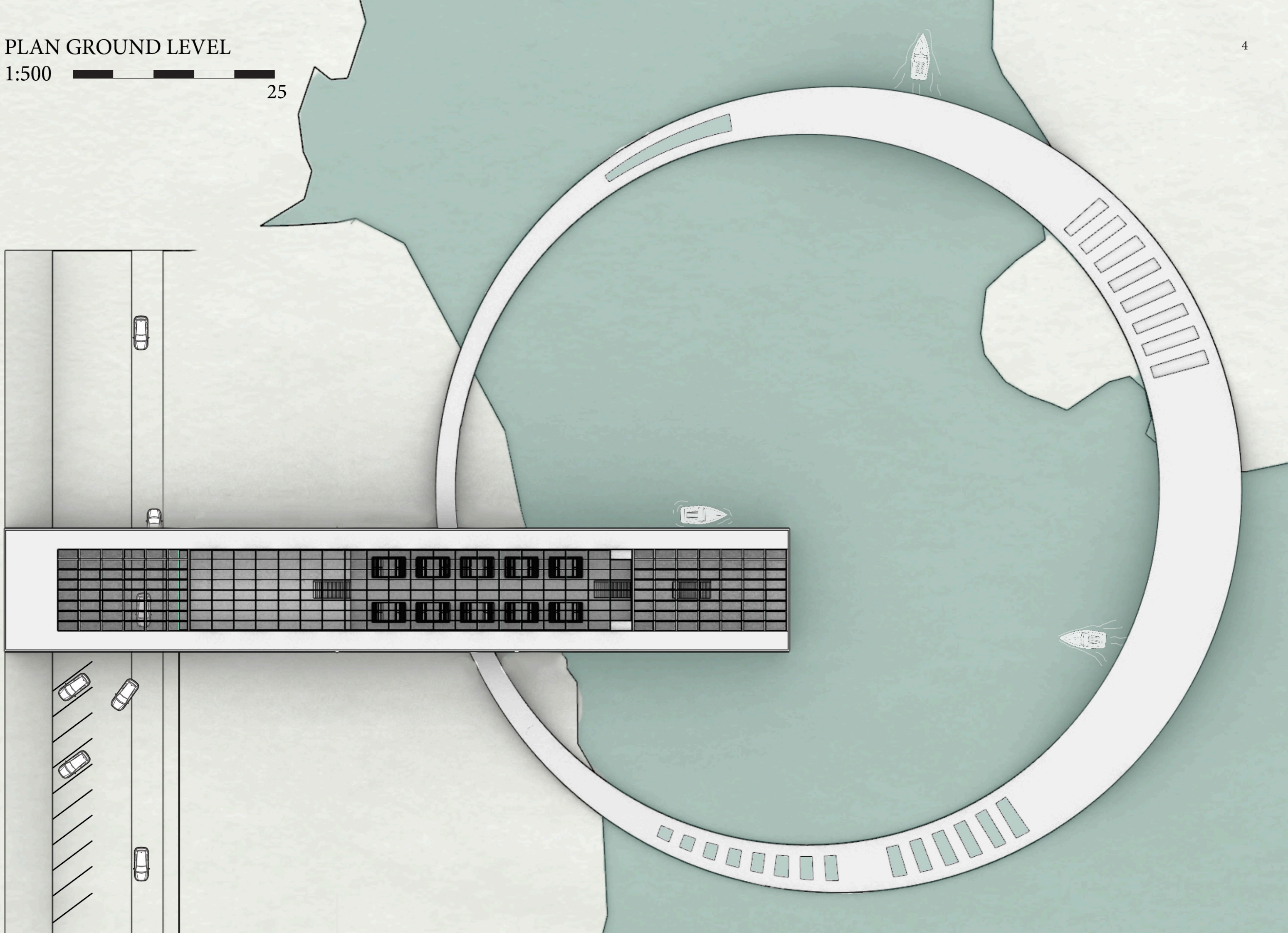
by land
by water

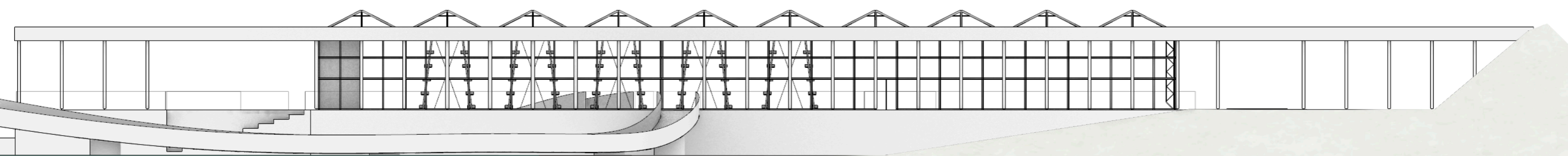
PLAN GROUND LEVEL

1:500




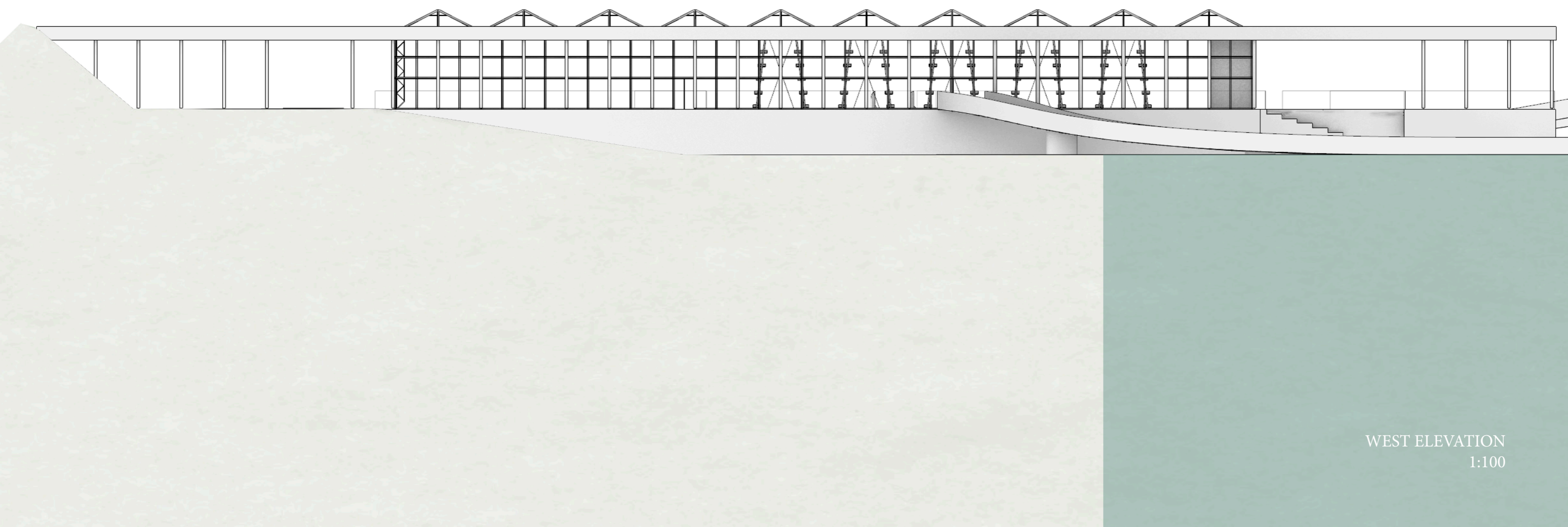
25



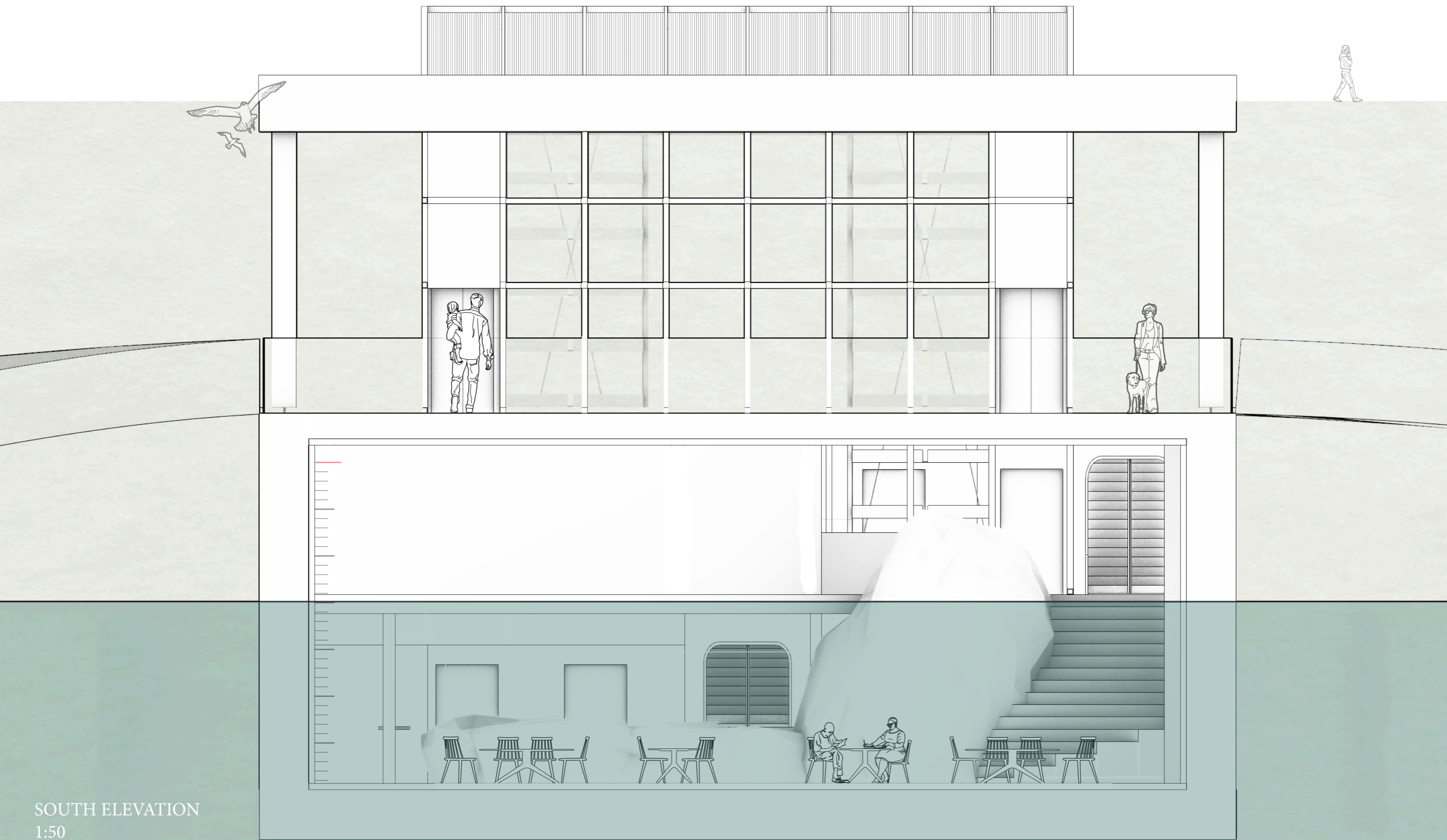


EAST ELEVATION

1:100 

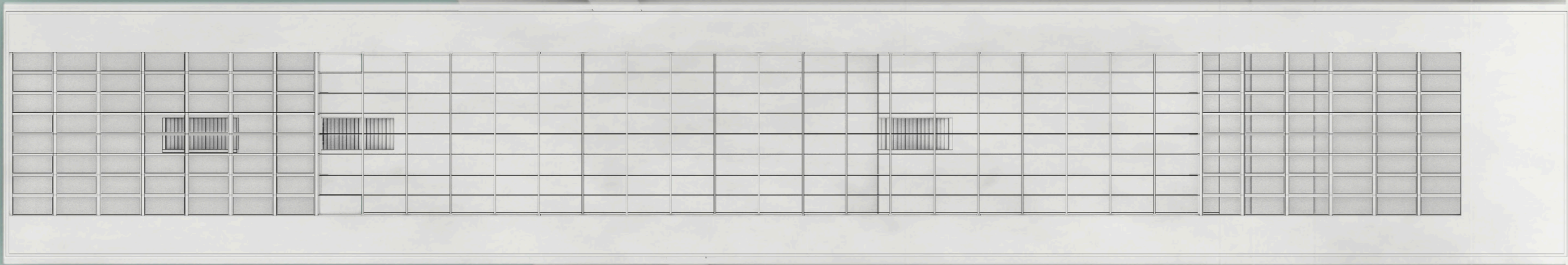


WEST ELEVATION
1:100



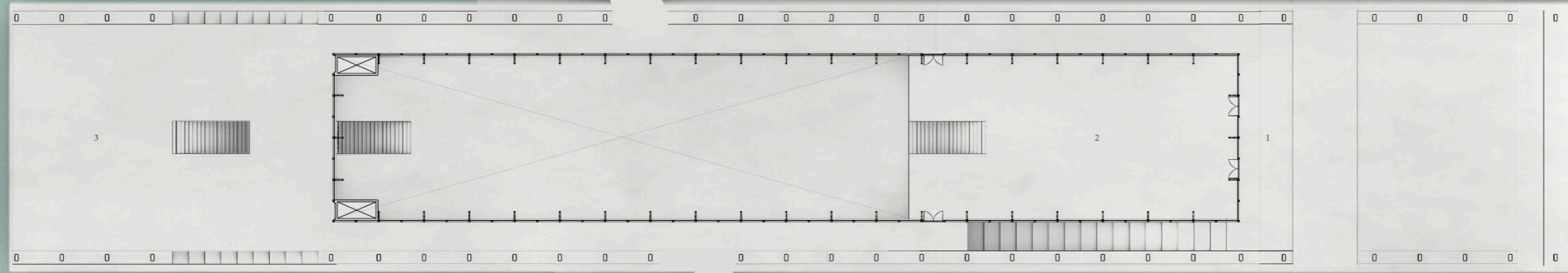
SOUTH ELEVATION
1:50

1	ENTRANCE AREA	40 m ²	8	RECEPTION	78 m ²
2	MARKET SQUARE	211 m ²	9	GUEST TOILETS	31 m ²
3	TERRACE	277 m ²	10	RESTAURANT	140 m ²
4	MAIN ENTRANCE		11	OYSTER BAR	
5	GREENHOUSE	370 m ²	12	KITCHEN	134 m ²
6	ELECTRICITY STORAGE		13	HEAT PUMP	
7	AIR HANDLING UNIT		14	WATER FILTERING	



ROOF PLAN
1:100  

1	ENTRANCE AREA	40 m ²	8	RECEPTION	78 m ²
2	MARKET SQUARE	211 m ²	9	GUEST TOILETS	31 m ²
3	TERRACE	277 m ²	10	RESTAURANT	140 m ²
4	MAIN ENTRANCE		11	OYSTER BAR	
5	GREENHOUSE	370 m ²	12	KITCHEN	134 m ²
6	ELECTRICITY STORAGE		13	HEAT PUMP	
7	AIR HANDLING UNIT		14	WATER FILTERING	



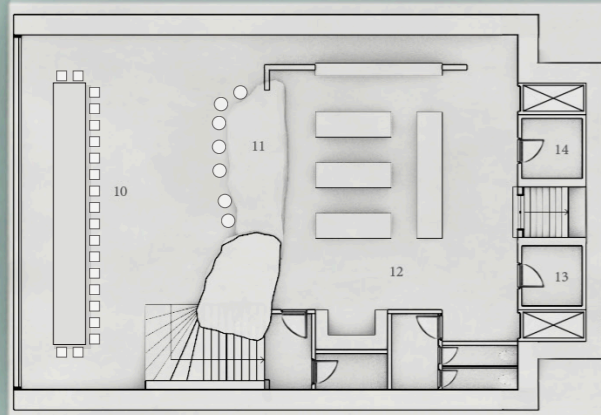
FIRST FLOOR PLAN
1:100

1	ENTRANCE AREA	40 m ²	8	RECEPTION	78 m ²
2	MARKET SQUARE	211 m ²	9	GUEST TOILETS	31 m ²
3	TERRACE	277 m ²	10	RESTAURANT	140 m ²
4	MAIN ENTRANCE		11	OYSTER BAR	
5	GREENHOUSE	370 m ²	12	KITCHEN	134 m ²
6	ELECTRICITY STORAGE		13	HEAT PUMP	
7	AIR HANDLING UNIT		14	WATER FILTERING	

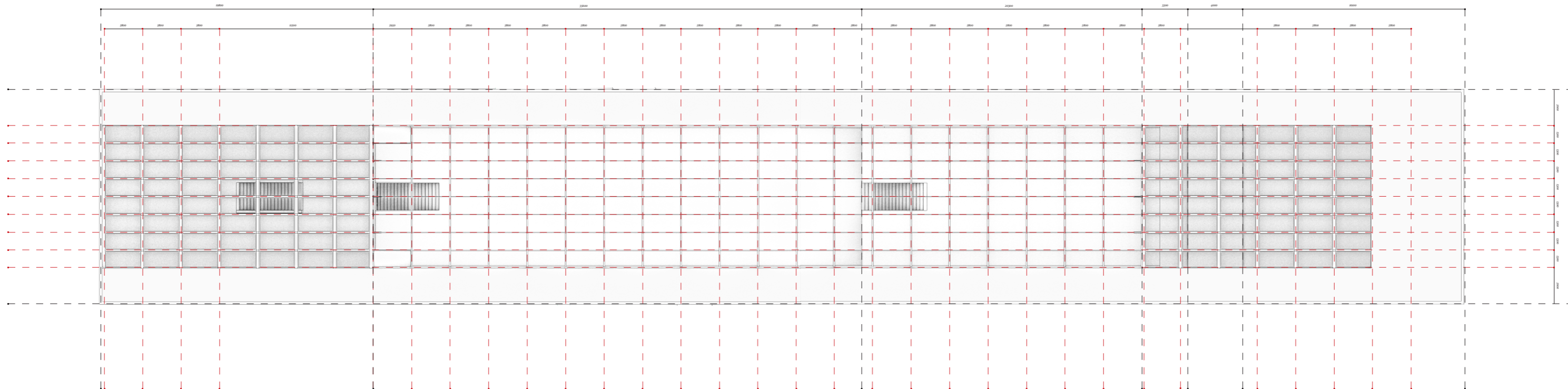


GROUND FLOOR PLAN
1:100

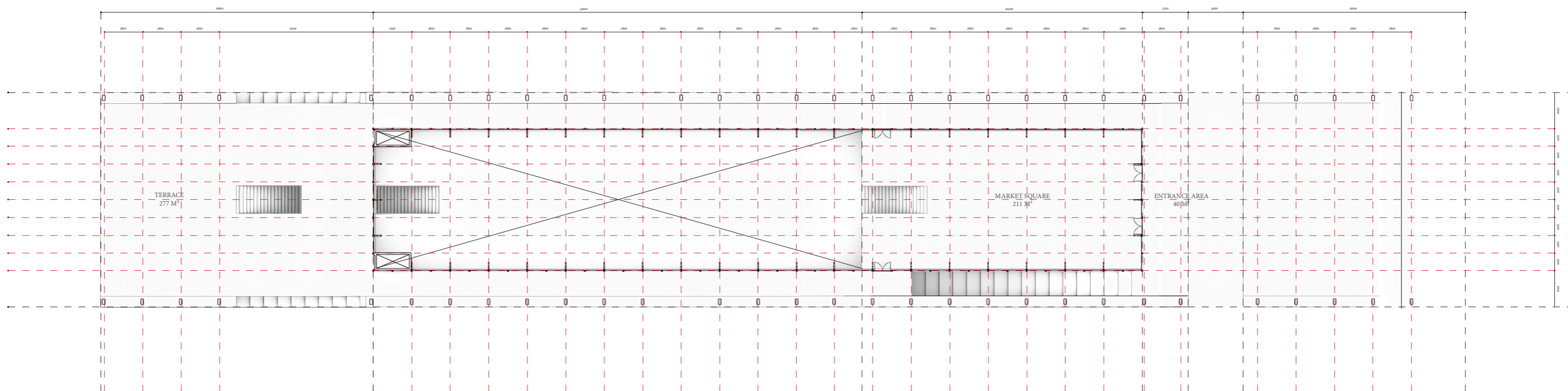
1	ENTRANCE AREA	40 m ²	8	RECEPTION	78 m ²
2	MARKET SQUARE	211 m ²	9	GUEST TOILETS	31 m ²
3	TERRACE	277 m ²	10	RESTAURANT	140 m ²
4	MAIN ENTRANCE		11	OYSTER BAR	
5	GREENHOUSE		12	KITCHEN	134 m ²
6	ELECTRICITY STORAGE	370 m ²	13	HEAT PUMP	
7	AIR HANDLING UNIT		14	WATER FILTERING	



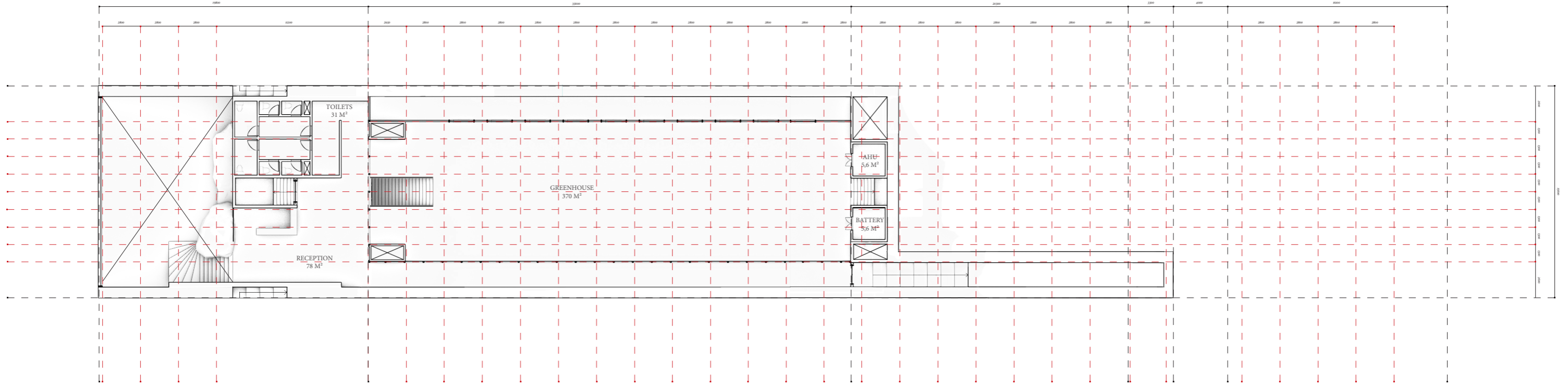
BASEMENT FLOOR PLAN
1:100  



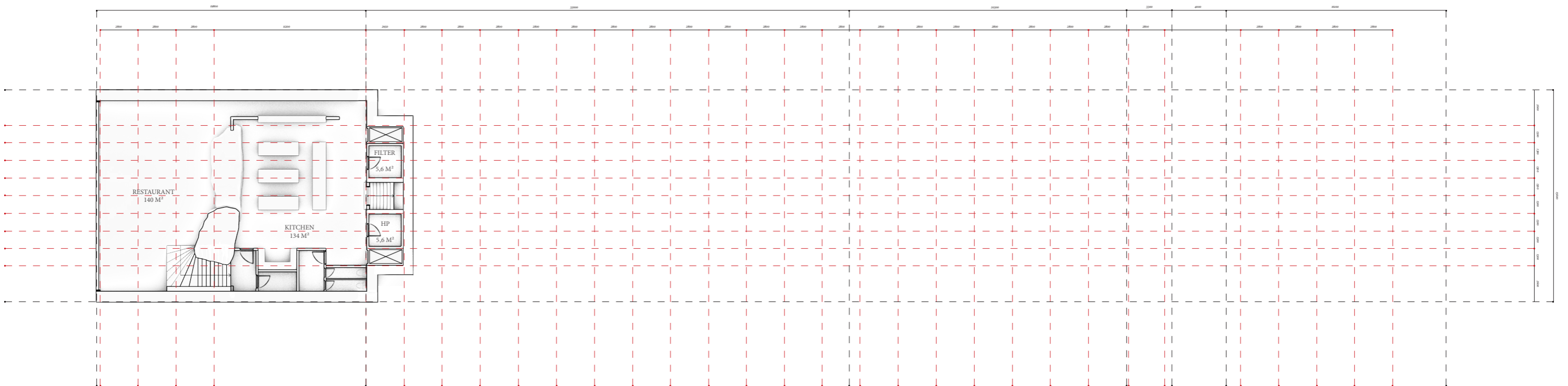
ROOF PLAN
1:100



FIRST FLOOR PLAN
1:100



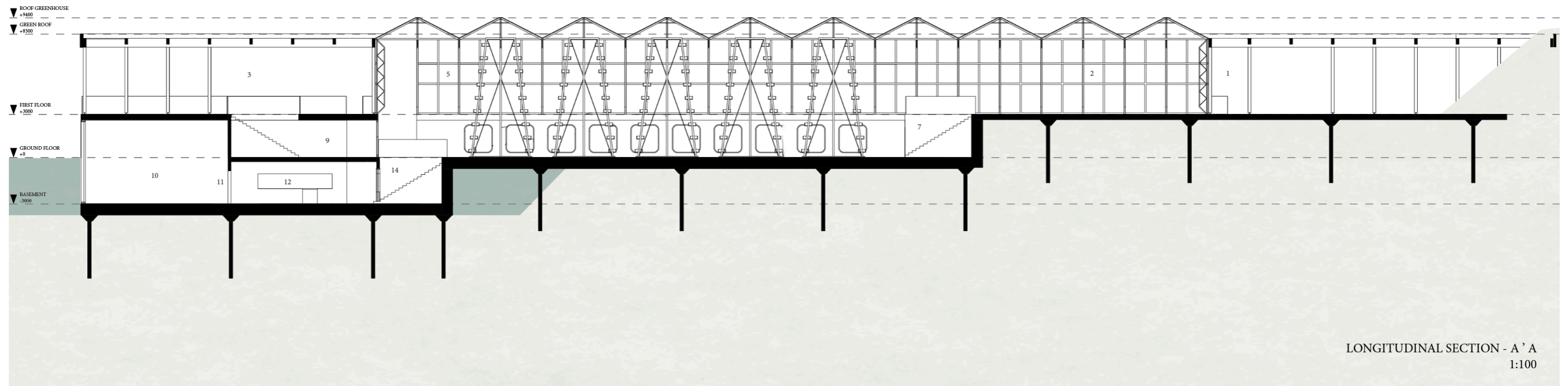
GROUND FLOOR PLAN
1:100



BASEMENT PLAN
1:100

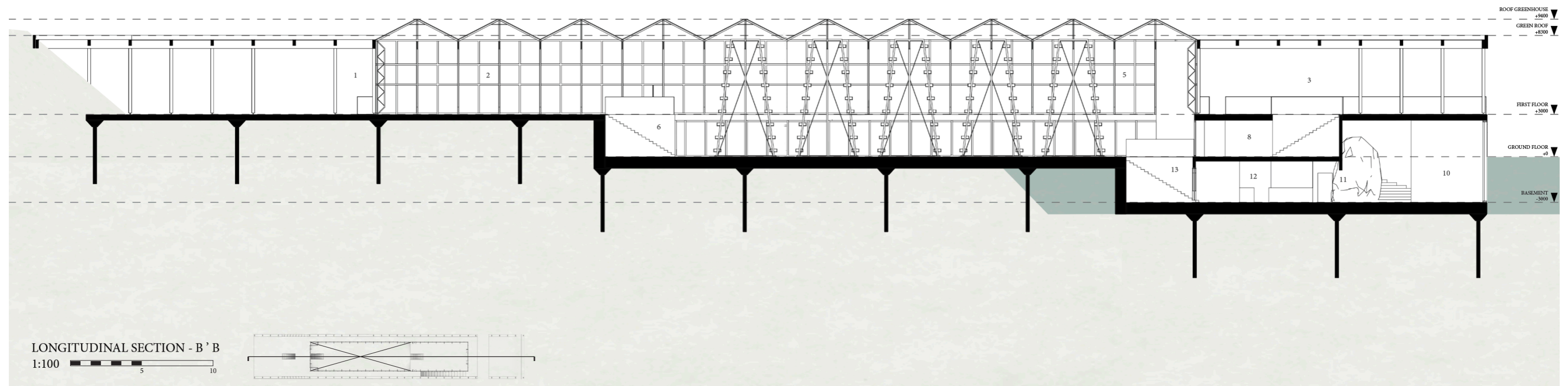


- | | | | |
|---|---------------------|----|-----------------|
| 1 | ENTRANCE AREA | 8 | RECEPTION |
| 2 | MARKET SQUARE | 9 | GUEST TOILETS |
| 3 | TERRACE | 10 | RESTAURANT |
| 4 | MAIN ENTRANCE | 11 | OYSTER BAR |
| 5 | GREENHOUSE | 12 | KITCHEN |
| 6 | ELECTRICITY STORAGE | 13 | HEAT PUMP |
| 7 | AIR HANDLING UNIT | 14 | WATER FILTERING |

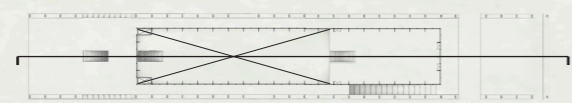


LONGITUDINAL SECTION - A ' A
1:100

- | | | | |
|---|---------------------|----|-----------------|
| 1 | ENTRANCE AREA | 8 | RECEPTION |
| 2 | MARKET SQUARE | 9 | GUEST TOILETS |
| 3 | TERRACE | 10 | RESTAURANT |
| 4 | MAIN ENTRANCE | 11 | OYSTER BAR |
| 5 | GREENHOUSE | 12 | KITCHEN |
| 6 | ELECTRICITY STORAGE | 13 | HEAT PUMP |
| 7 | AIR HANDLING UNIT | 14 | WATER FILTERING |



LONGITUDINAL SECTION - B ' B
1:100

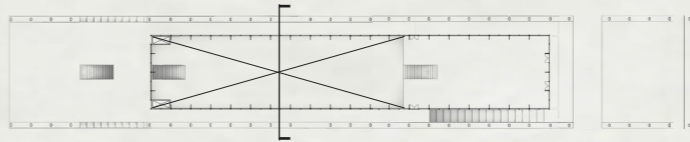
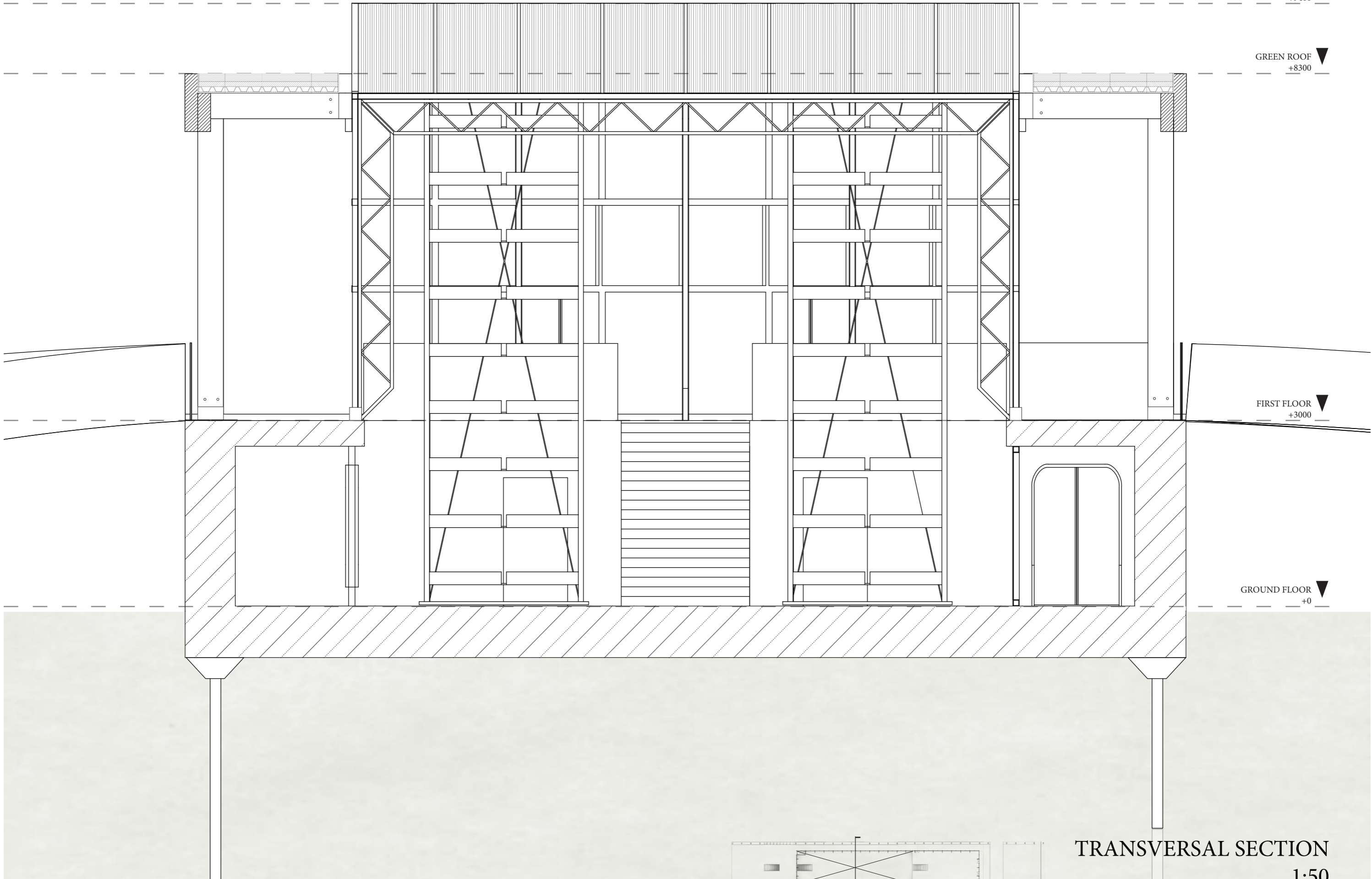


ROOF GREENHOUSE
+9400

GREEN ROOF
+8300

FIRST FLOOR
+3000

GROUND FLOOR
+0

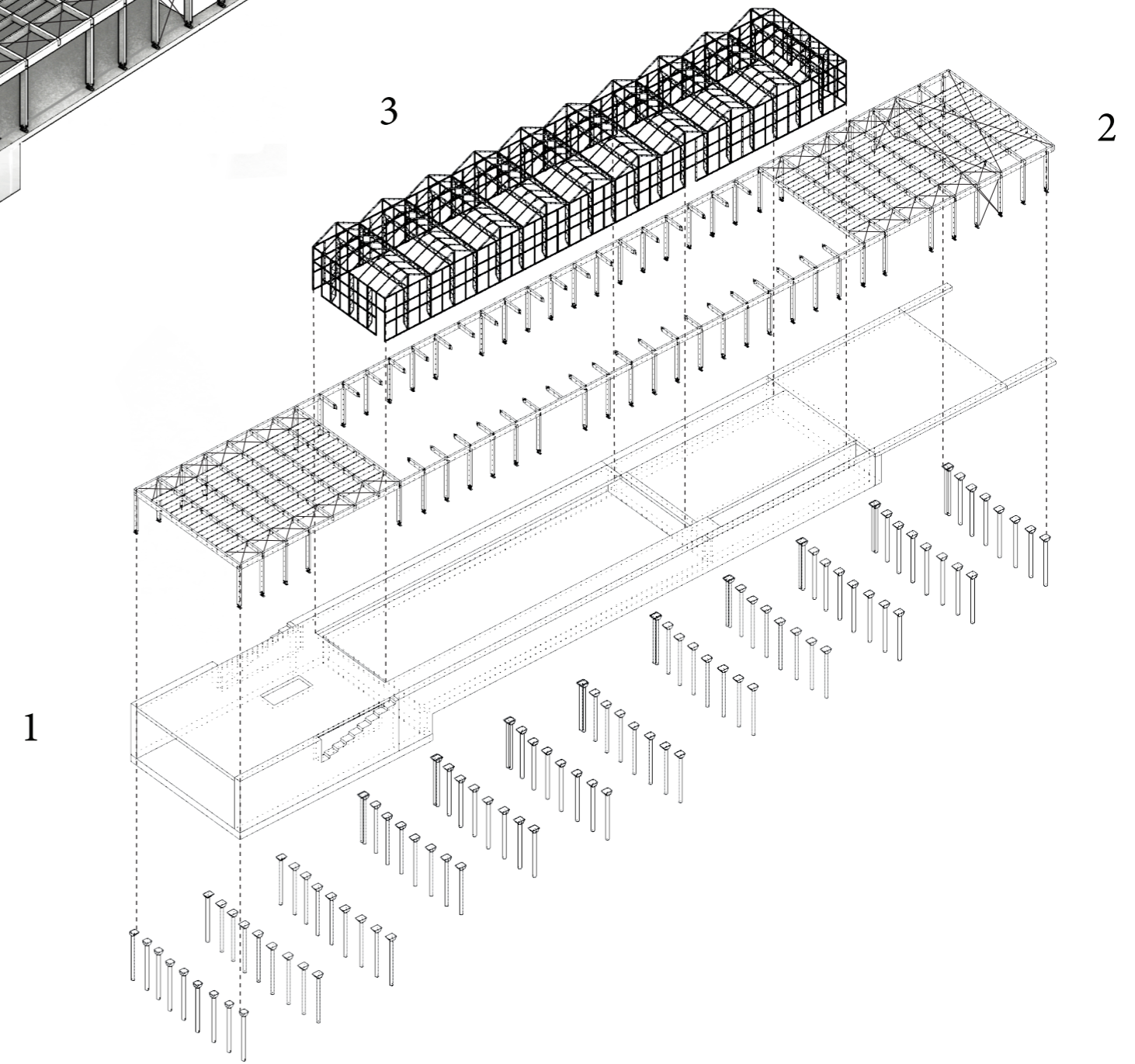
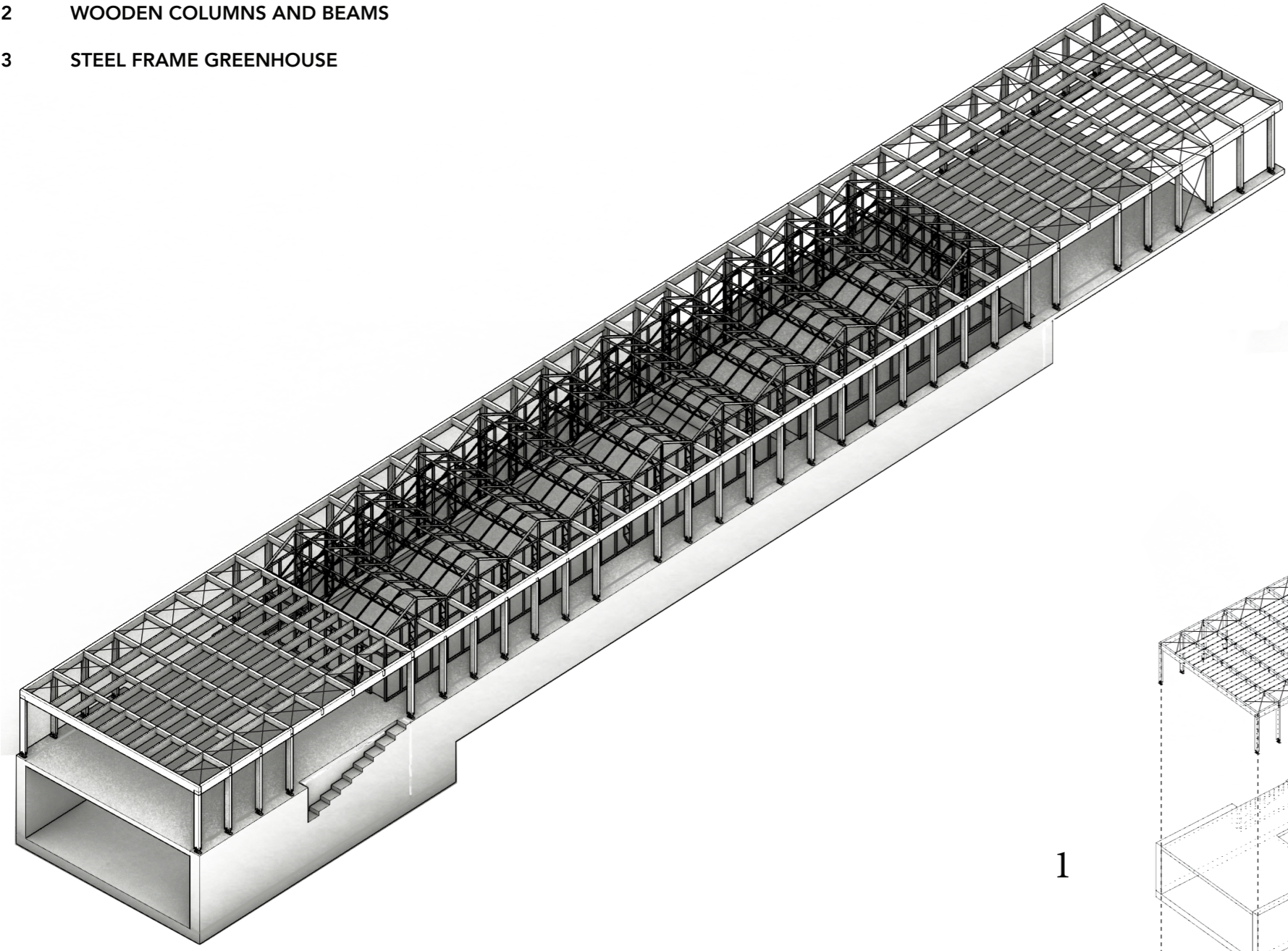


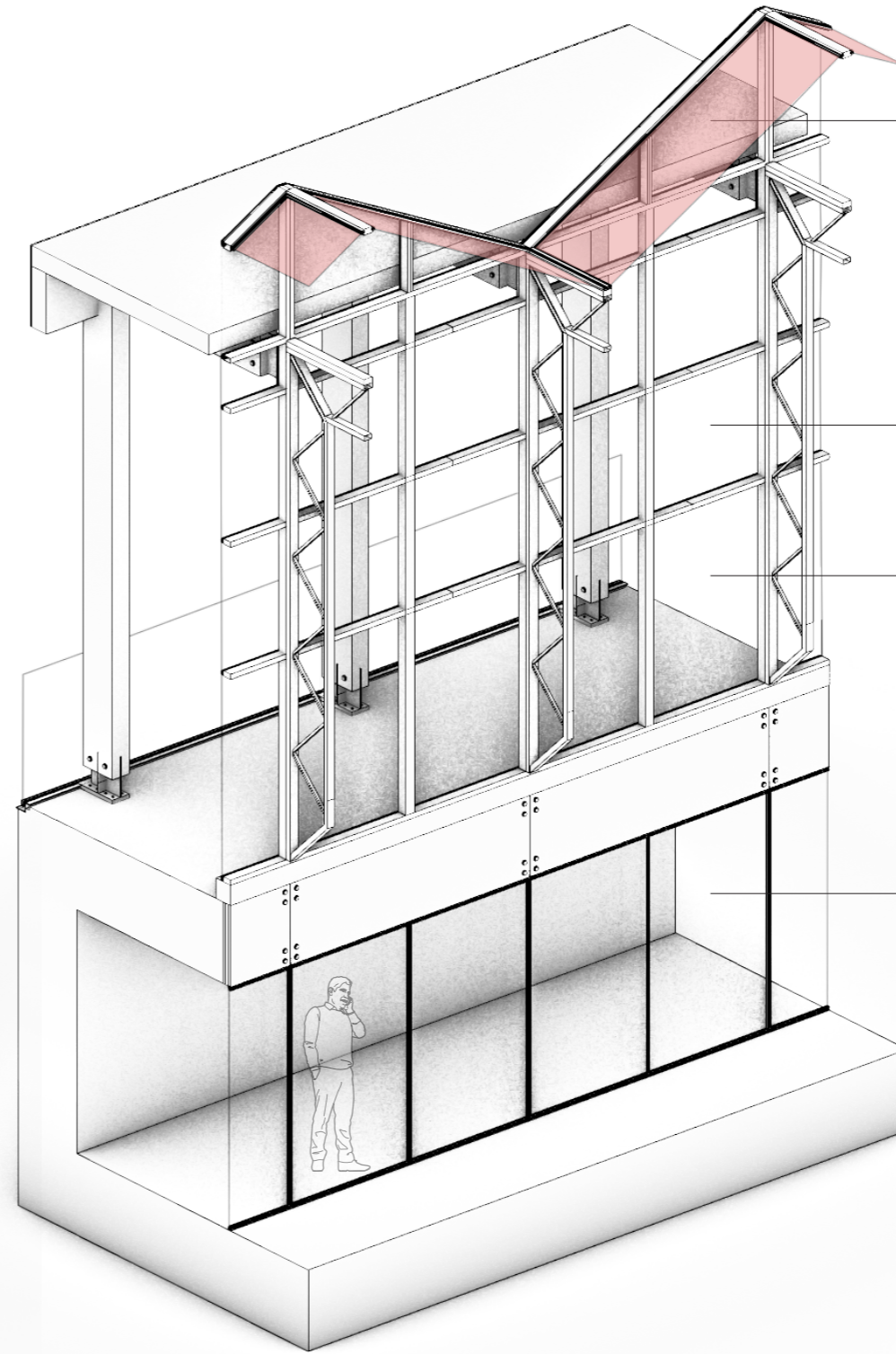
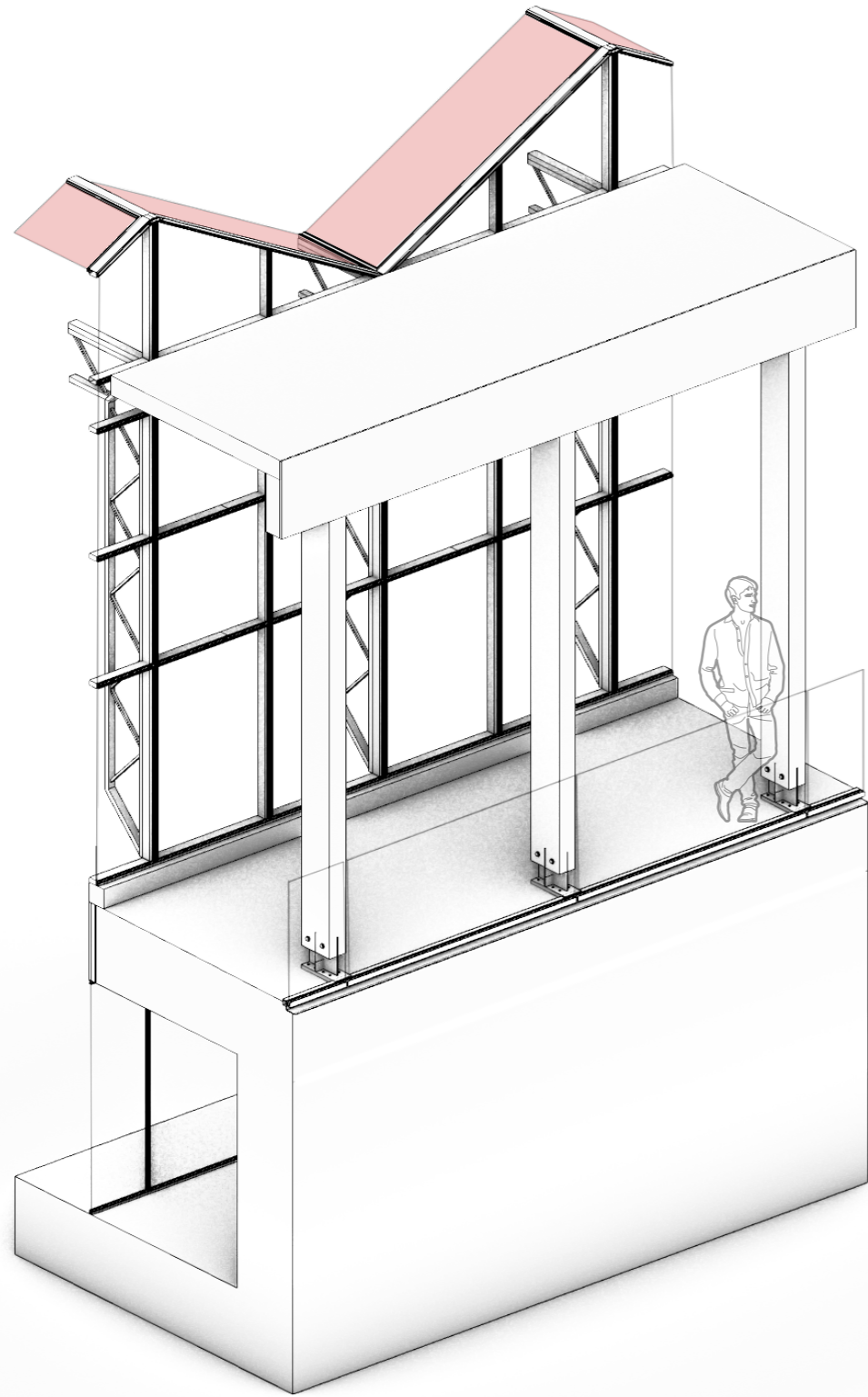
TRANSVERSAL SECTION
1:50

AXONOMETRY

LOAD-BEARING STRUCTURE

- 1 CONCRETE BASE
- 2 WOODEN COLUMNS AND BEAMS
- 3 STEEL FRAME GREENHOUSE



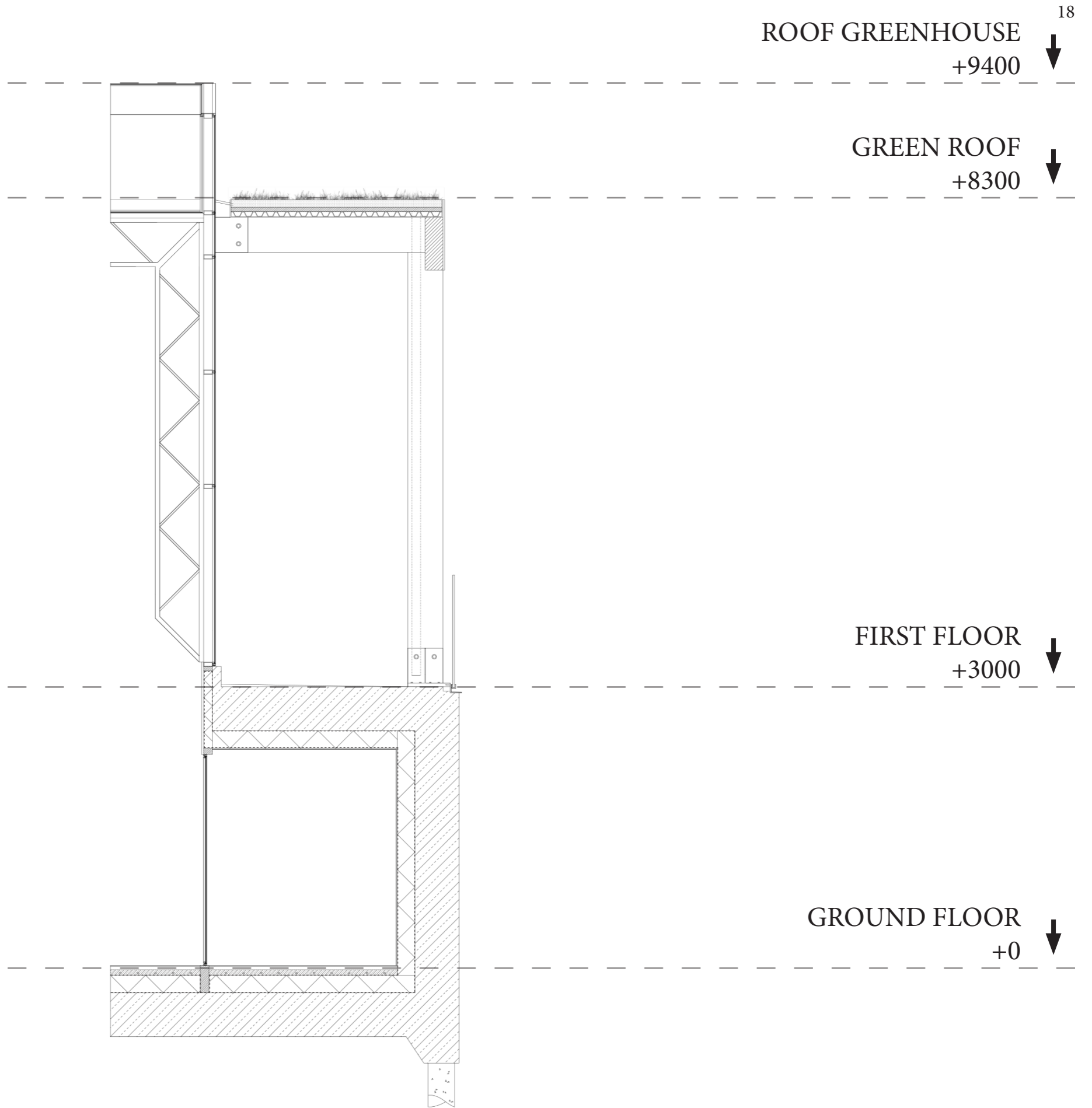


Red-tinted AuREUS solar windows

Diffused single glass with an anti-reflective (AR) coating

Single glass with an anti-reflective (AR) coating

Double glass

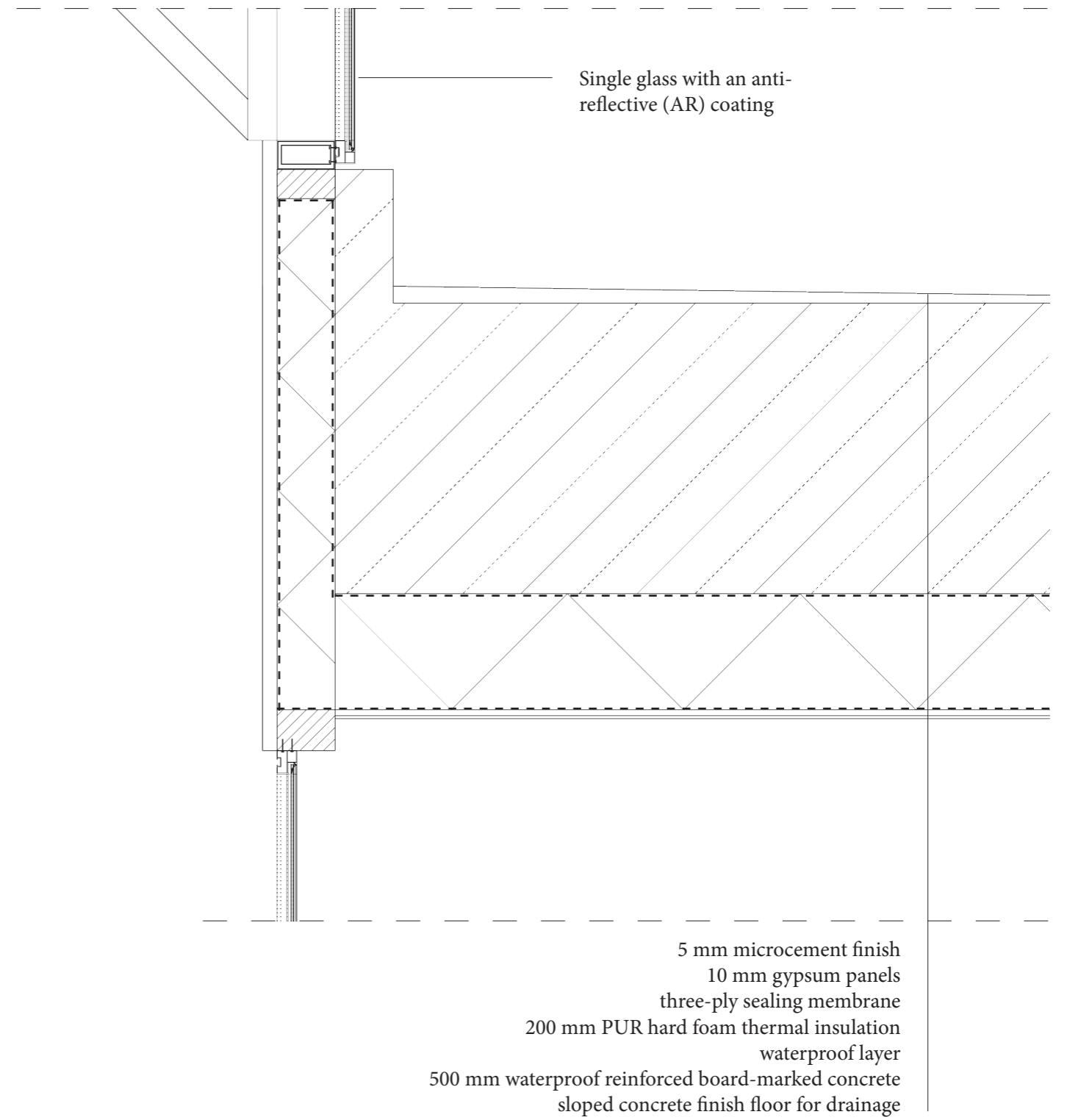
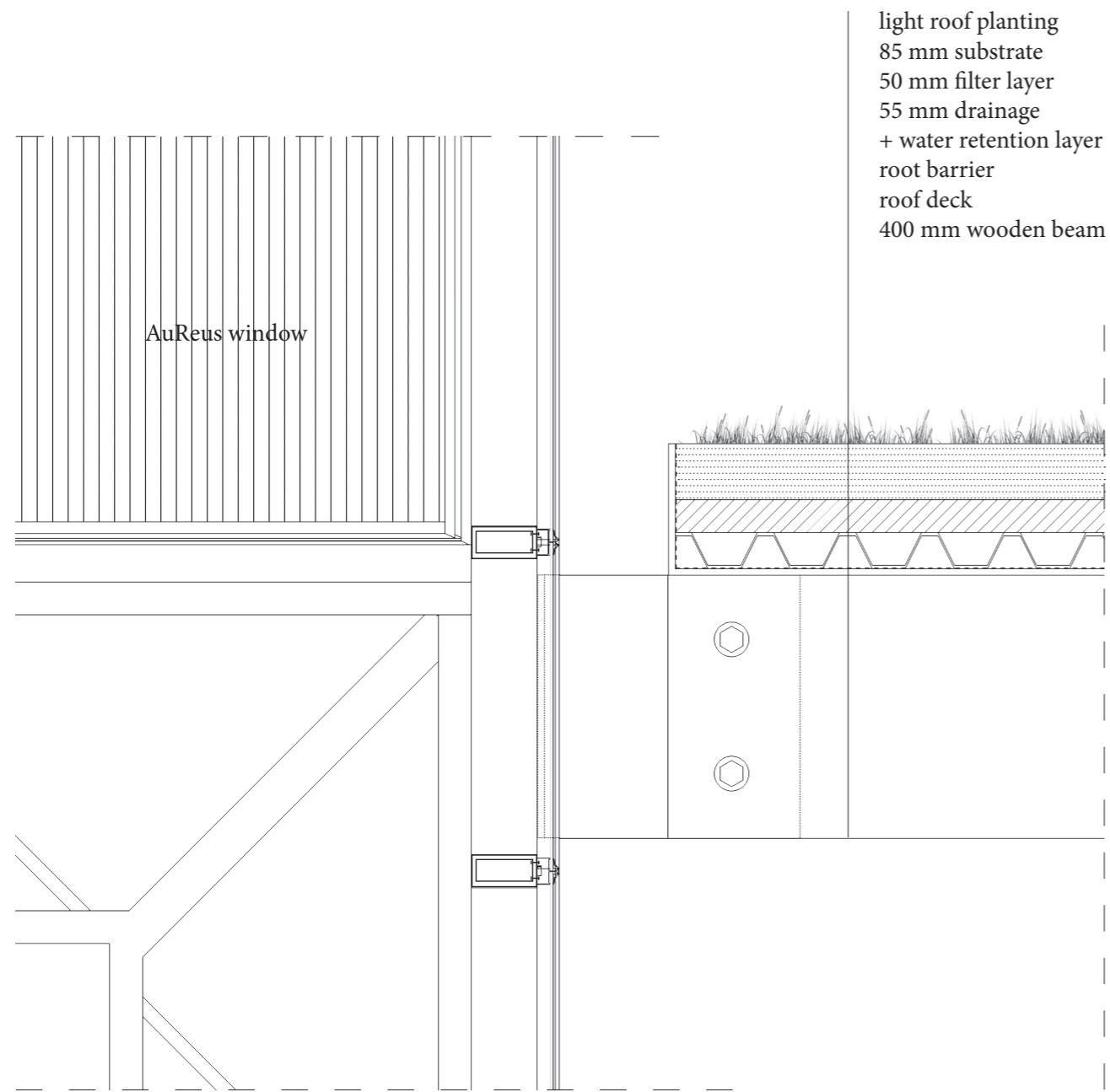


DETAIL 1 & 2 - 1:5

VERTICAL

ROOF LEVEL - GREENROOF

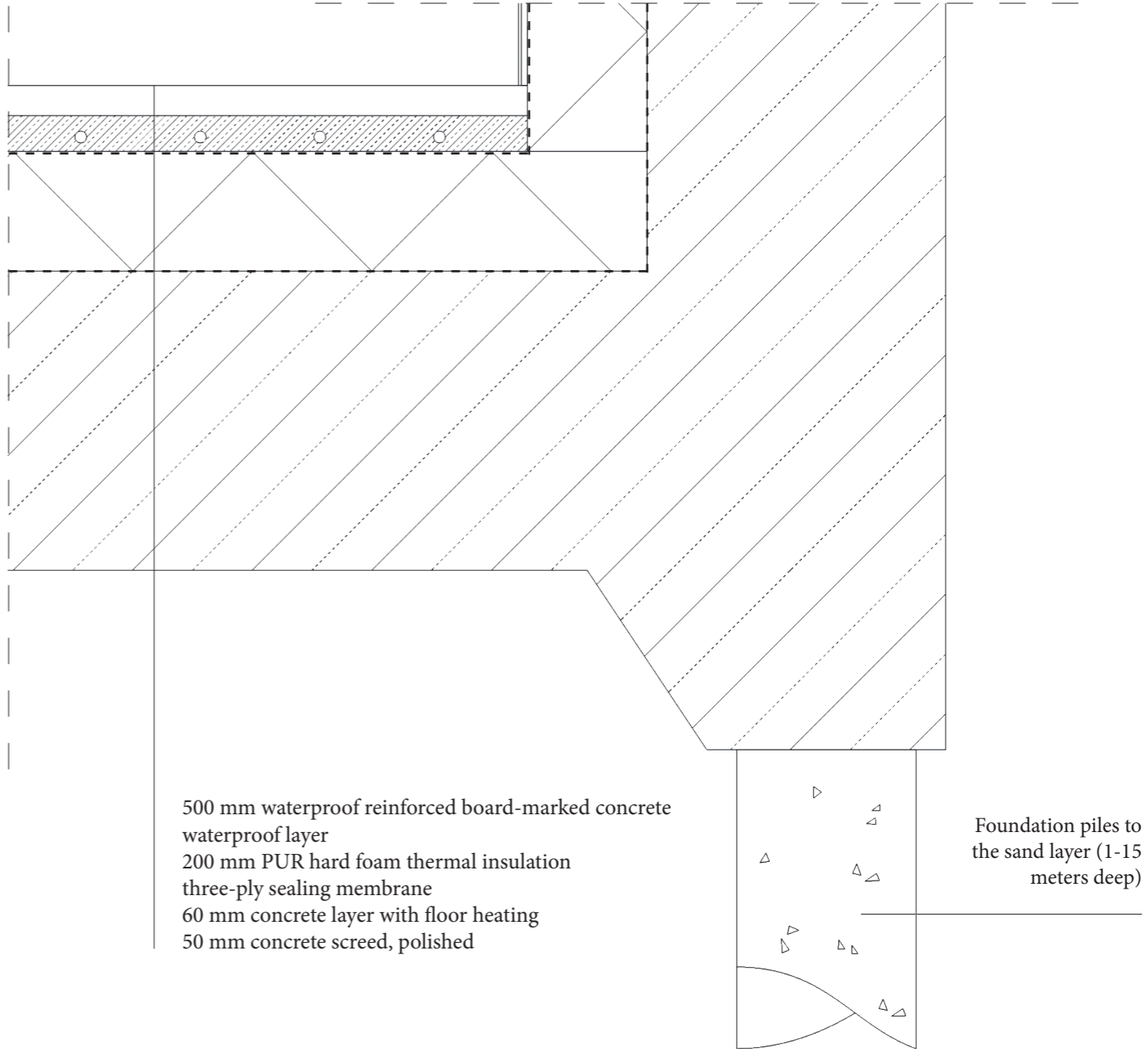
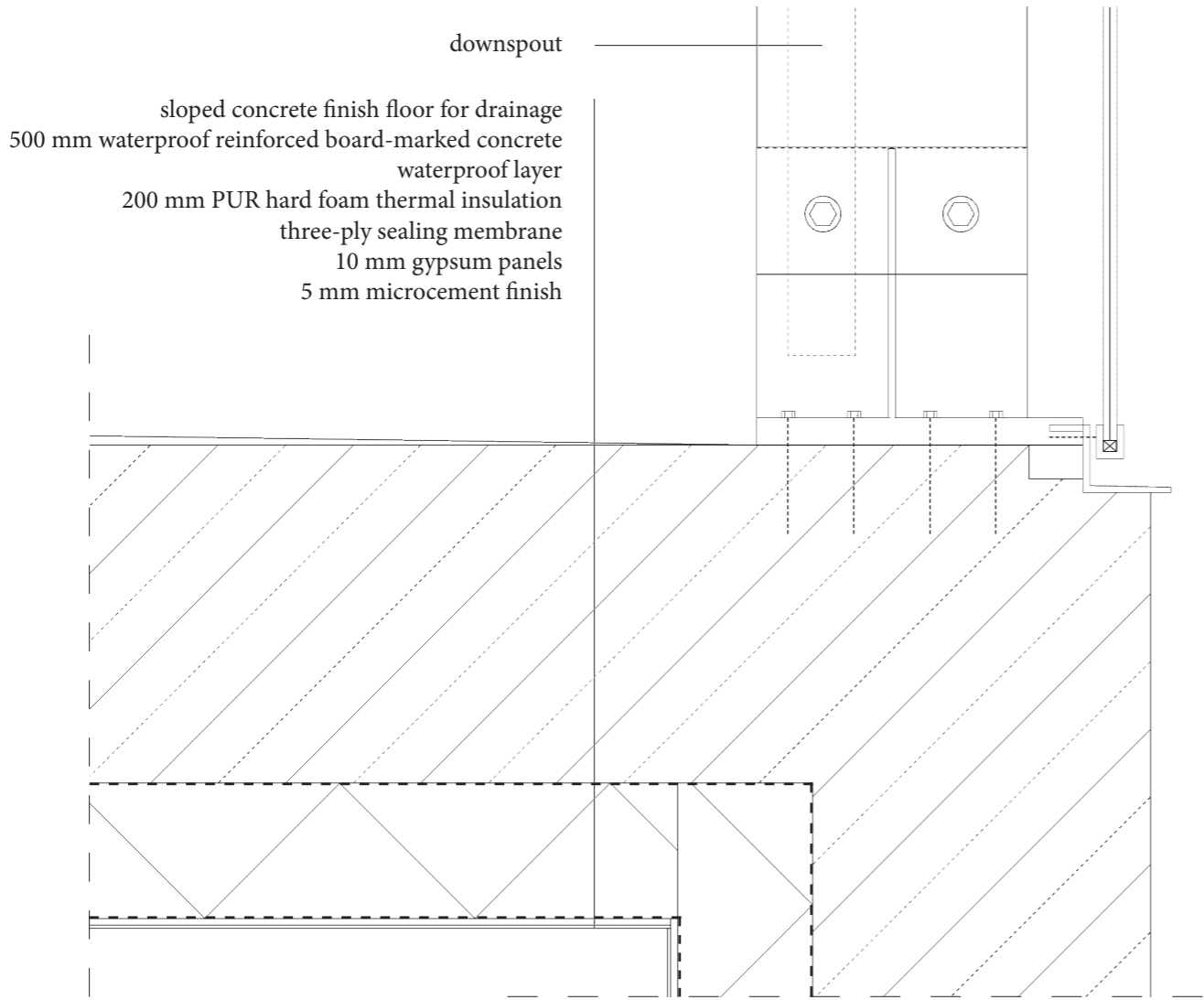
FIRST LEVEL - GREENHOUSE

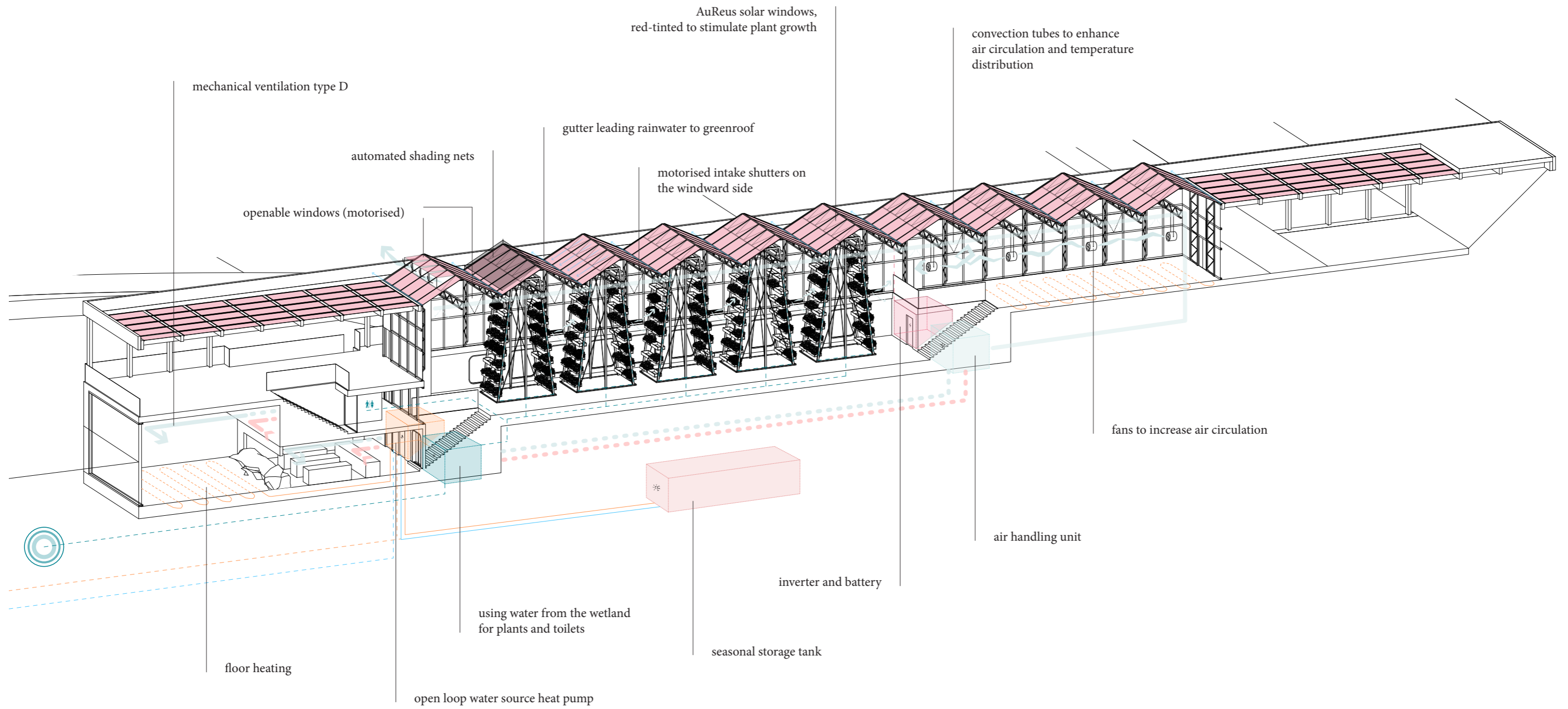


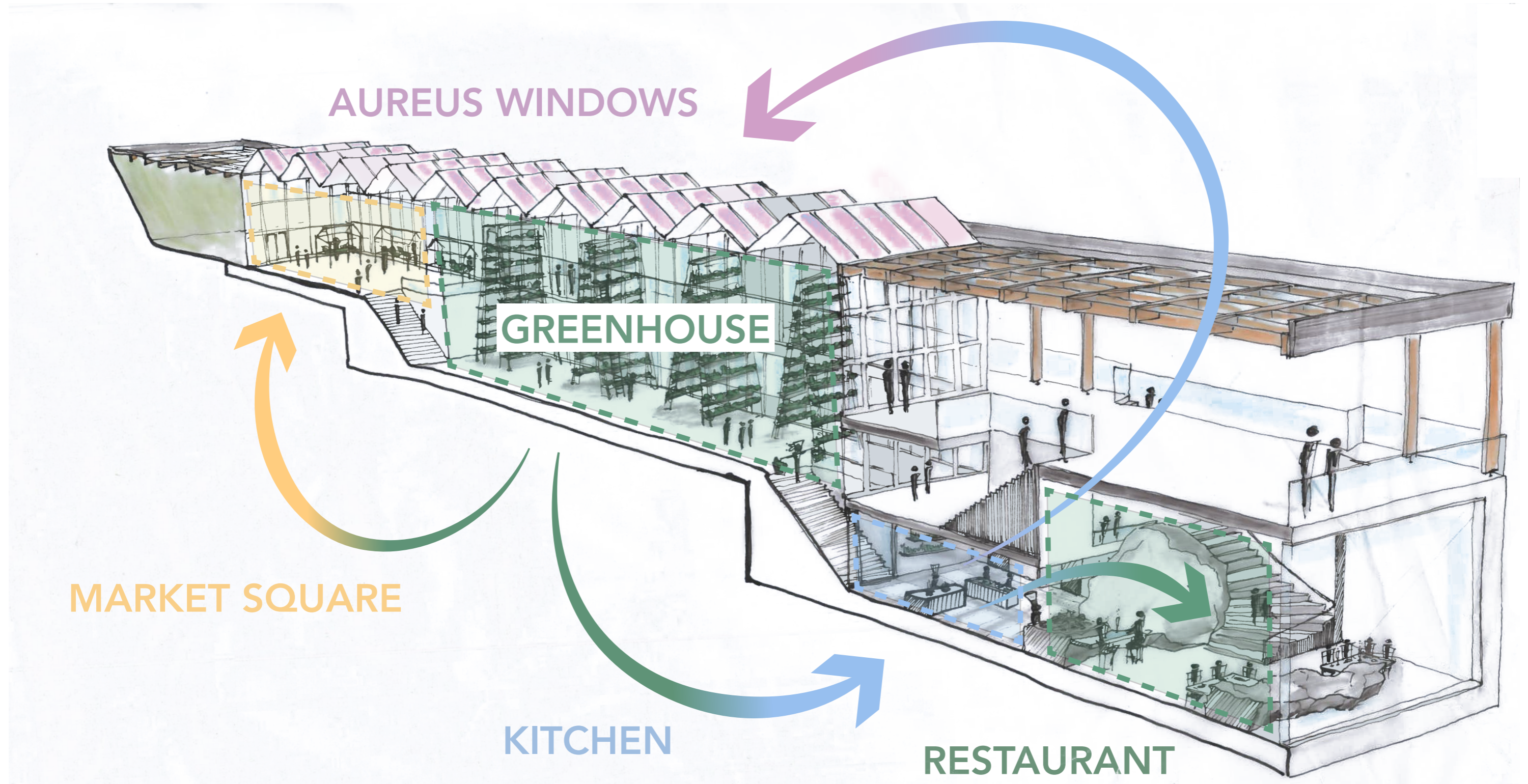
DETAIL 3 & 4 - 1:5

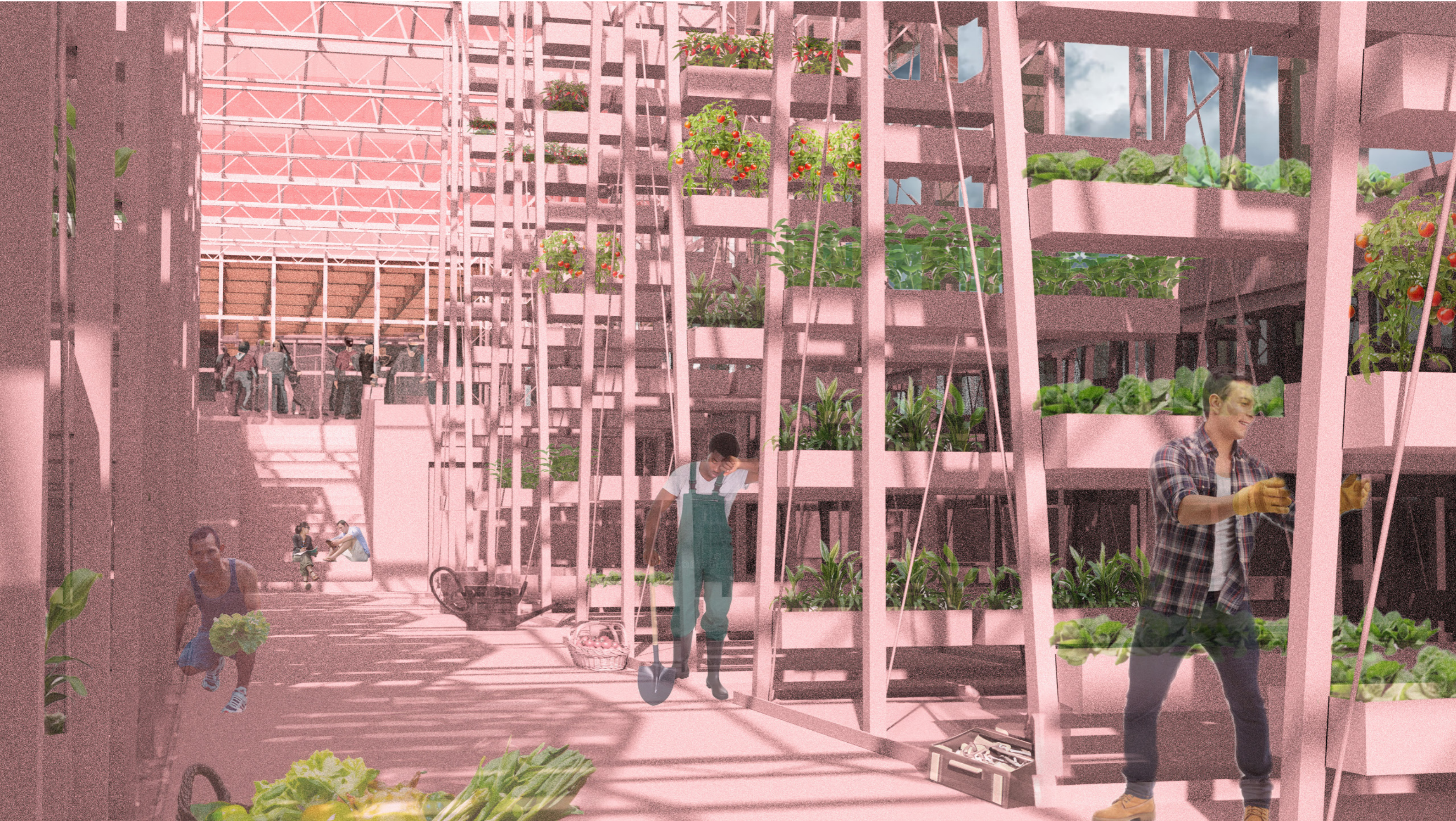
VERTICAL

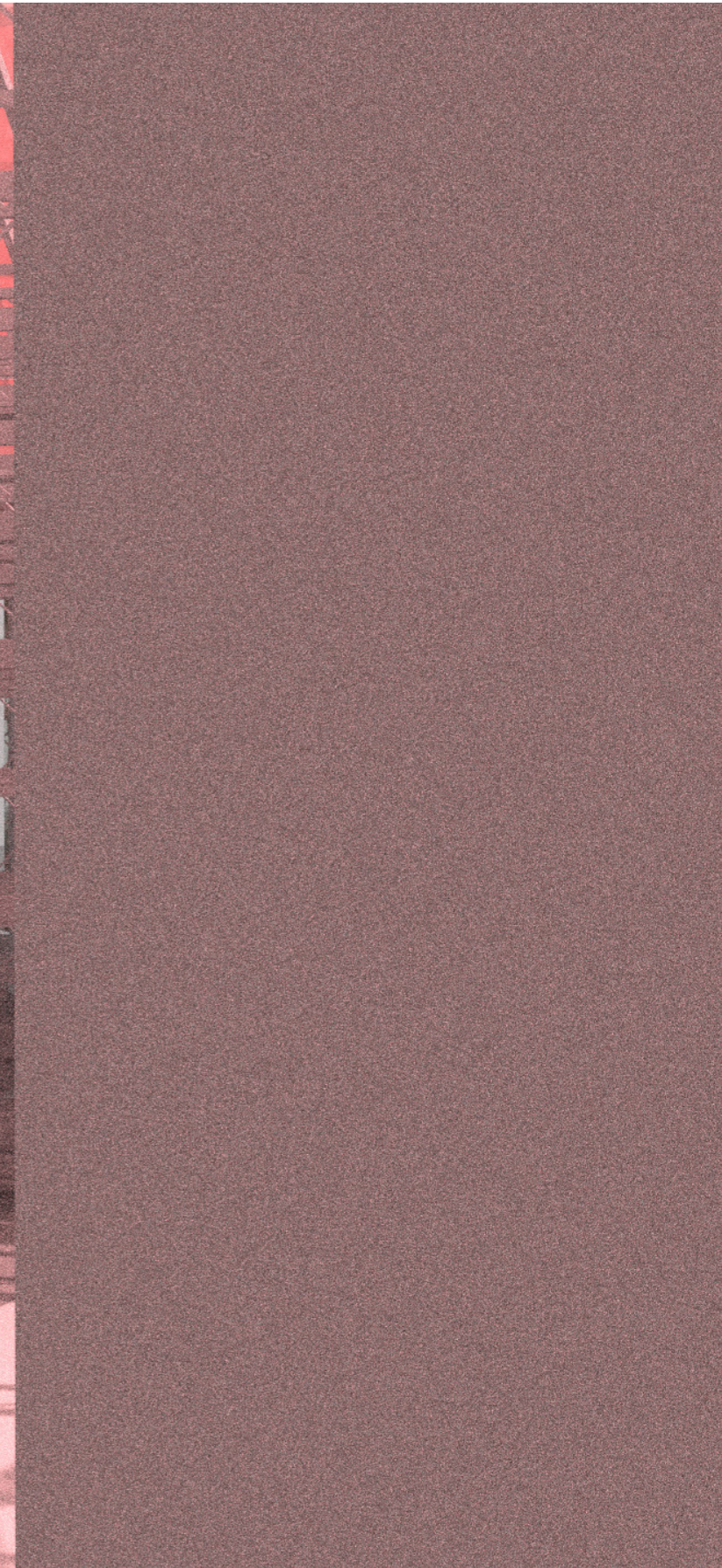
FIRST LEVEL - RAILING
GROUND LEVEL - FOUNDATION

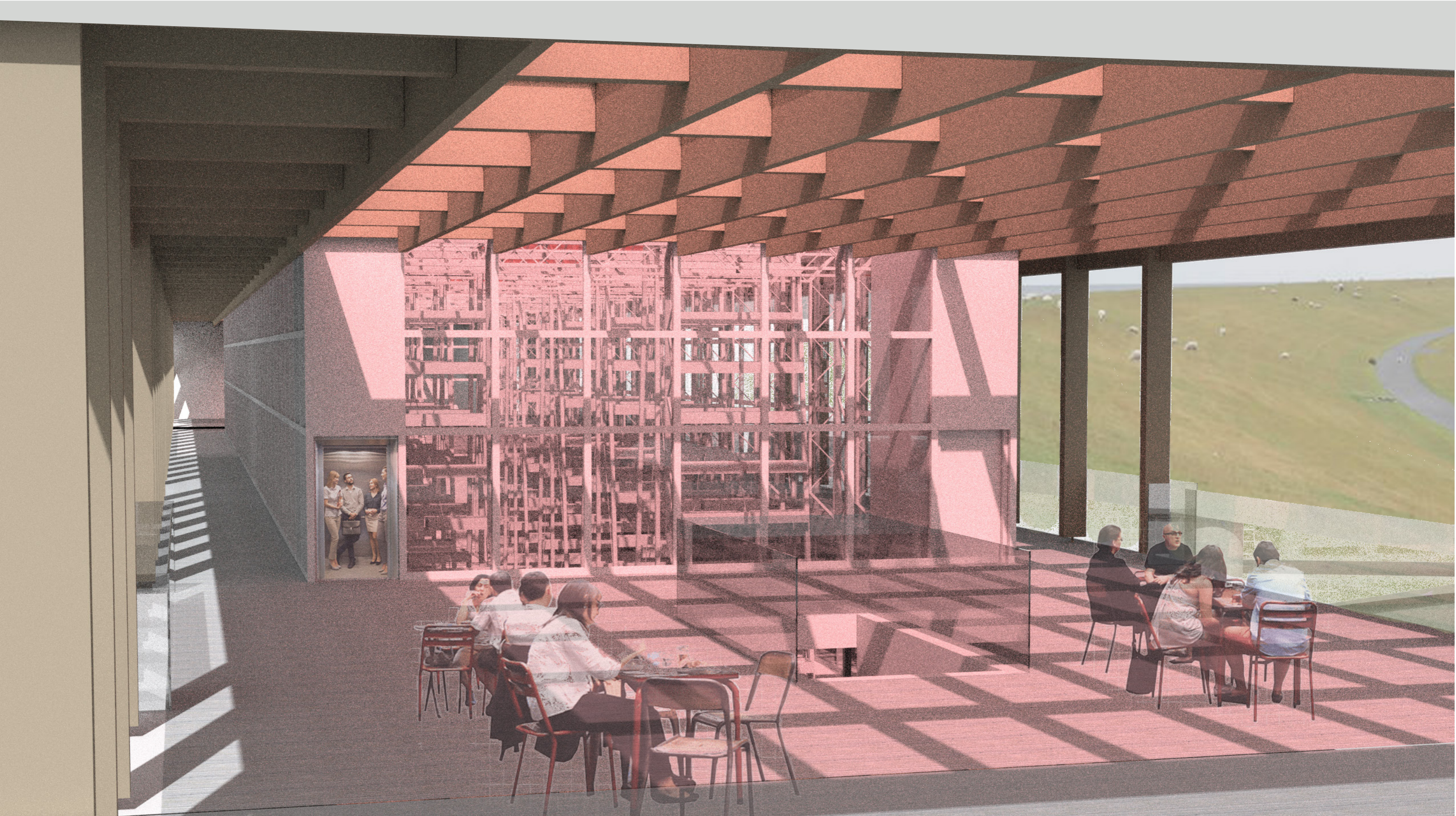


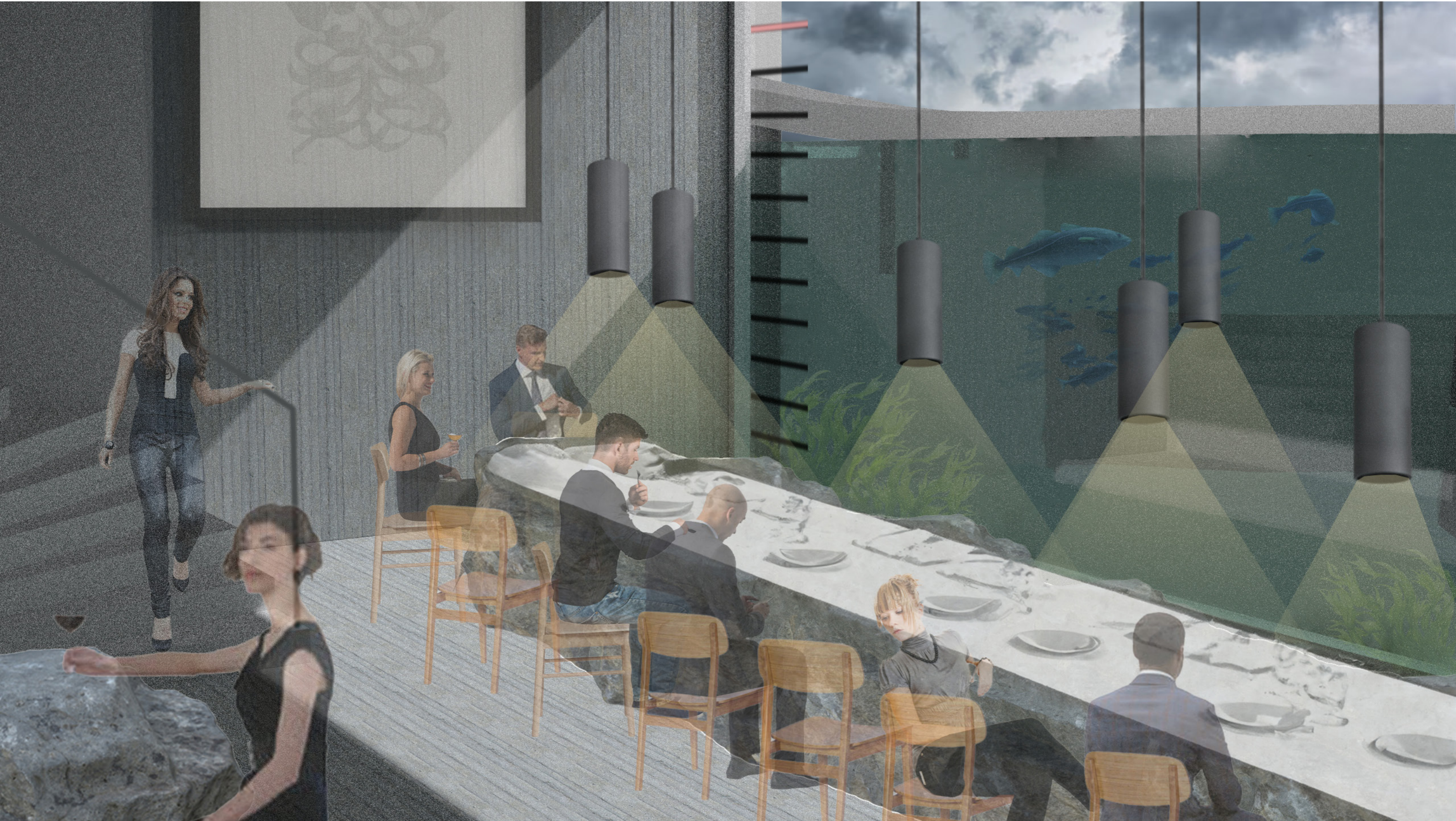


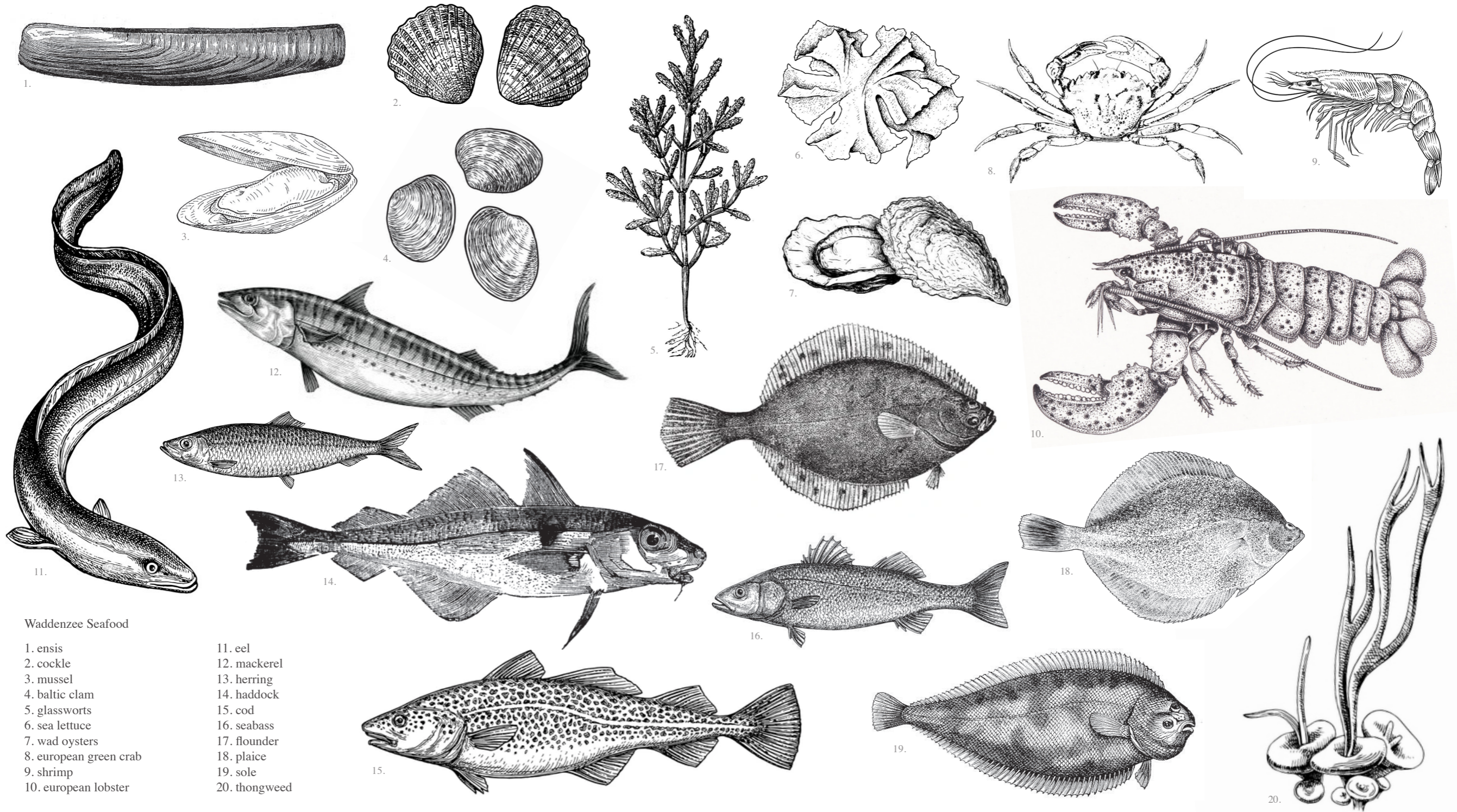












Waddenzee Seafood

- | | |
|------------------------|---------------|
| 1. ensis | 11. eel |
| 2. cockle | 12. mackerel |
| 3. mussel | 13. herring |
| 4. baltic clam | 14. haddock |
| 5. glassworts | 15. cod |
| 6. sea lettuce | 16. seabass |
| 7. wad oysters | 17. flounder |
| 8. european green crab | 18. plaice |
| 9. shrimp | 19. sole |
| 10. european lobster | 20. thongweed |

CIRCLE AS MEASURING TOOL

