



DRAWING SET
CARGO PLUS

The Cargo Terminal Design for Enhancing Working Conditions

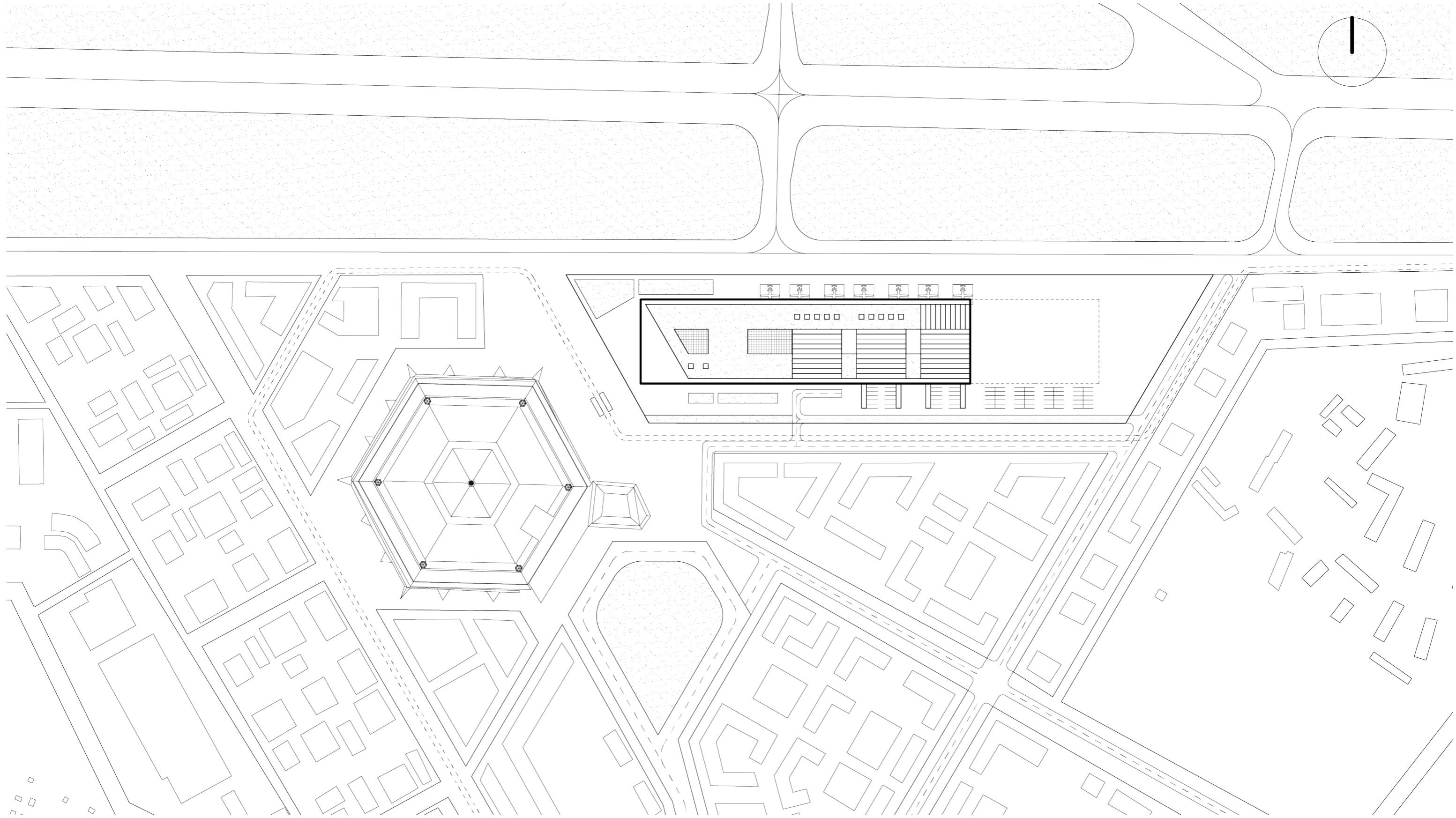
Meng Chen
5573238
06 -12-2023

CARGO PLUS
GROUP SITE PLAN

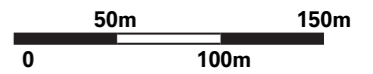


GROUP SITE PLAN 1:10,000

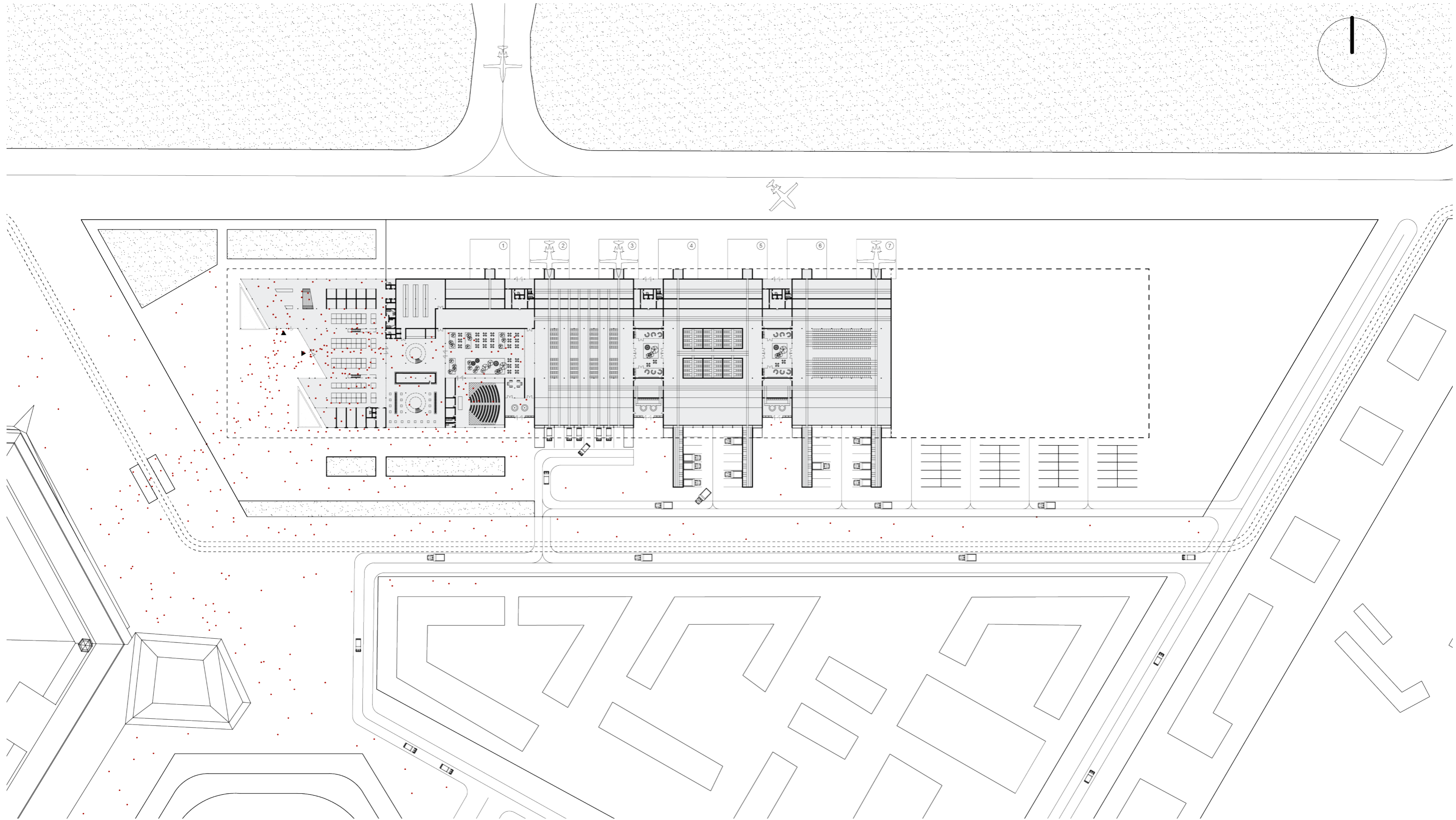
CARGO PLUS SITE PLAN



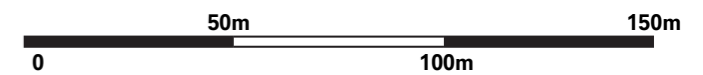
SITE PLAN 1:1000



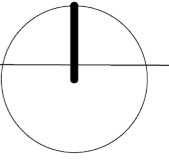
CARGO PLUS
URBAN IMPLEMENTATION



URBAN IMPLEMENTATION 1:500

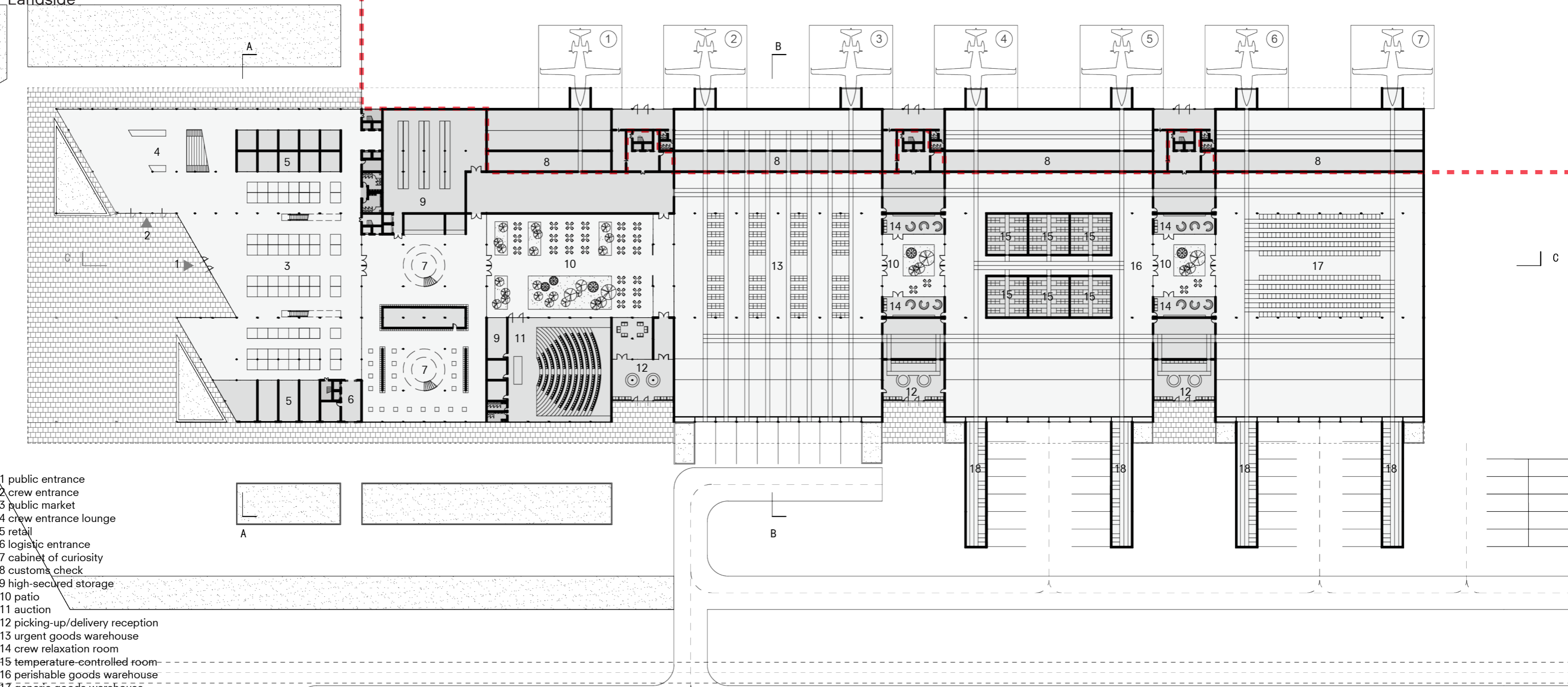


CARGO PLUS FLOOR PLANS



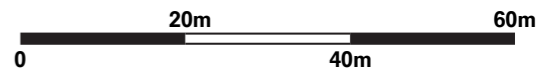
Airside

Landside

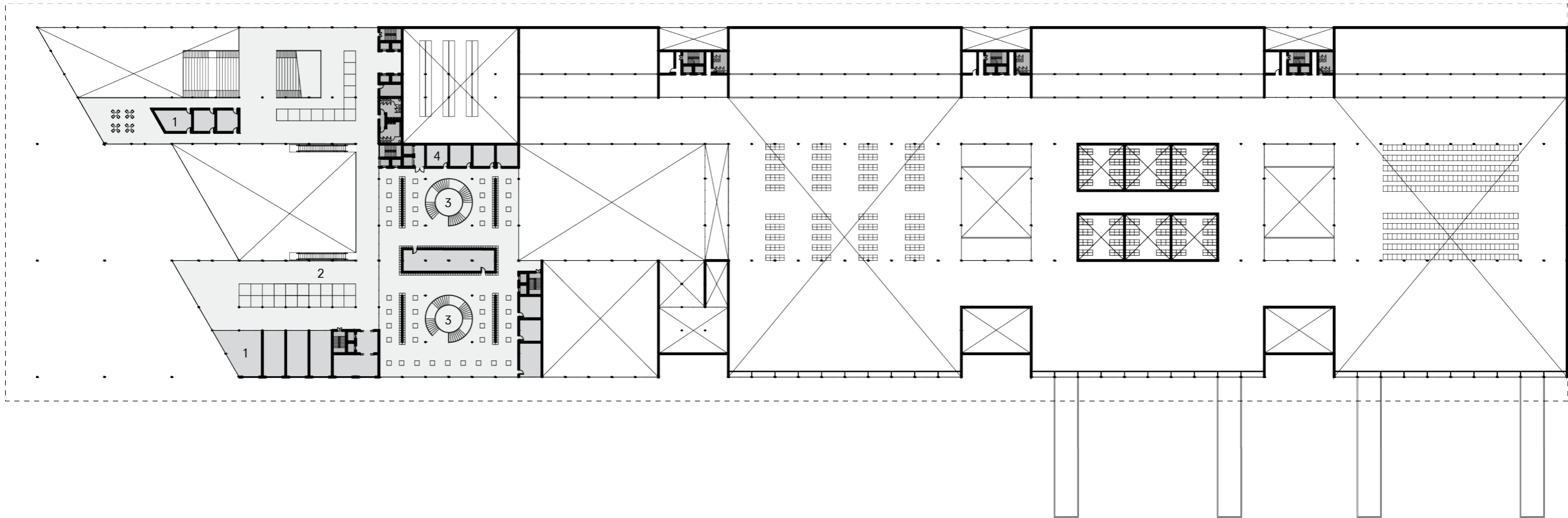
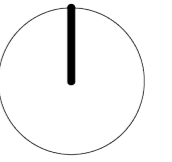


- 1 public entrance
- 2 crew entrance
- 3 public market
- 4 crew entrance lounge
- 5 retail
- 6 logistic entrance
- 7 cabinet of curiosity
- 8 customs check
- 9 high-secured storage
- 10 patio
- 11 auction
- 12 picking-up/delivery reception
- 13 urgent goods warehouse
- 14 crew relaxation room
- 15 temperature-controlled room
- 16 perishable goods warehouse
- 17 generic goods warehouse
- 18 truck dock

GROUND FLOOR 1:200

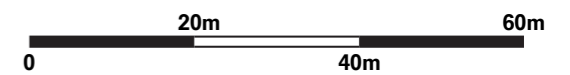


CARGO PLUS FLOOR PLANS

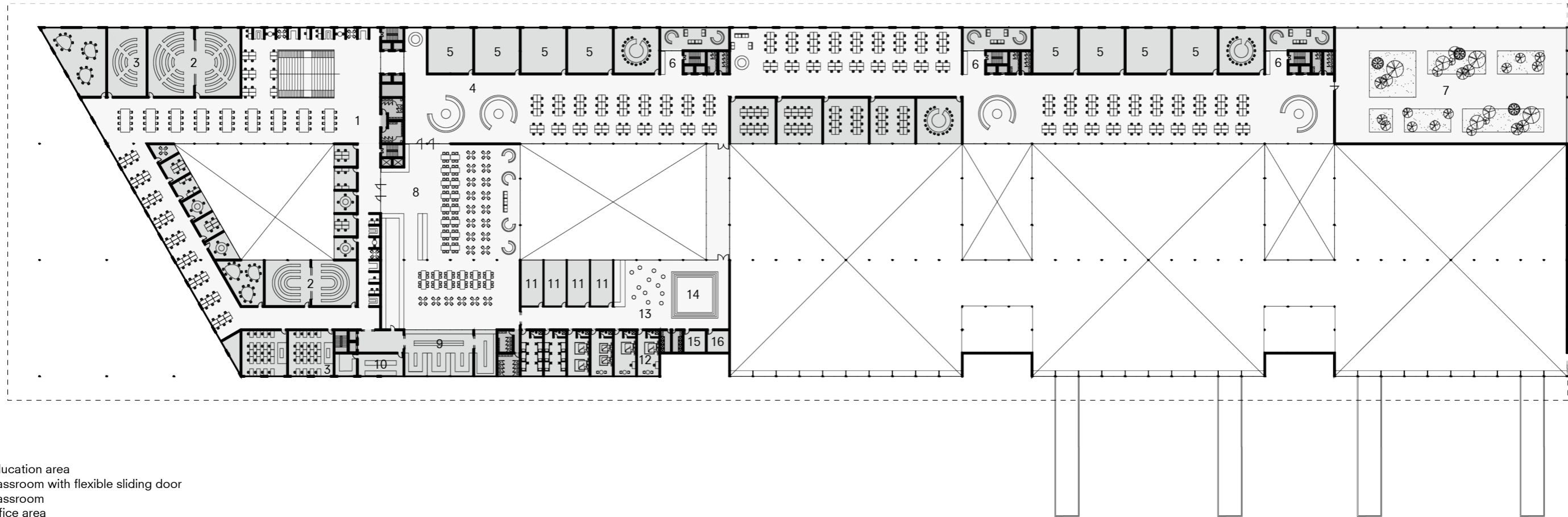
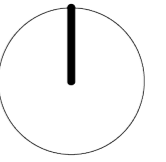


- 1 retail
- 2 public market
- 3 cabinet of curiosity
- 4 storage room

1F 1:200

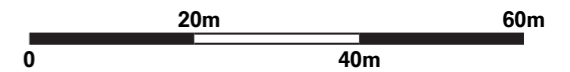


CARGO PLUS FLOOR PLANS

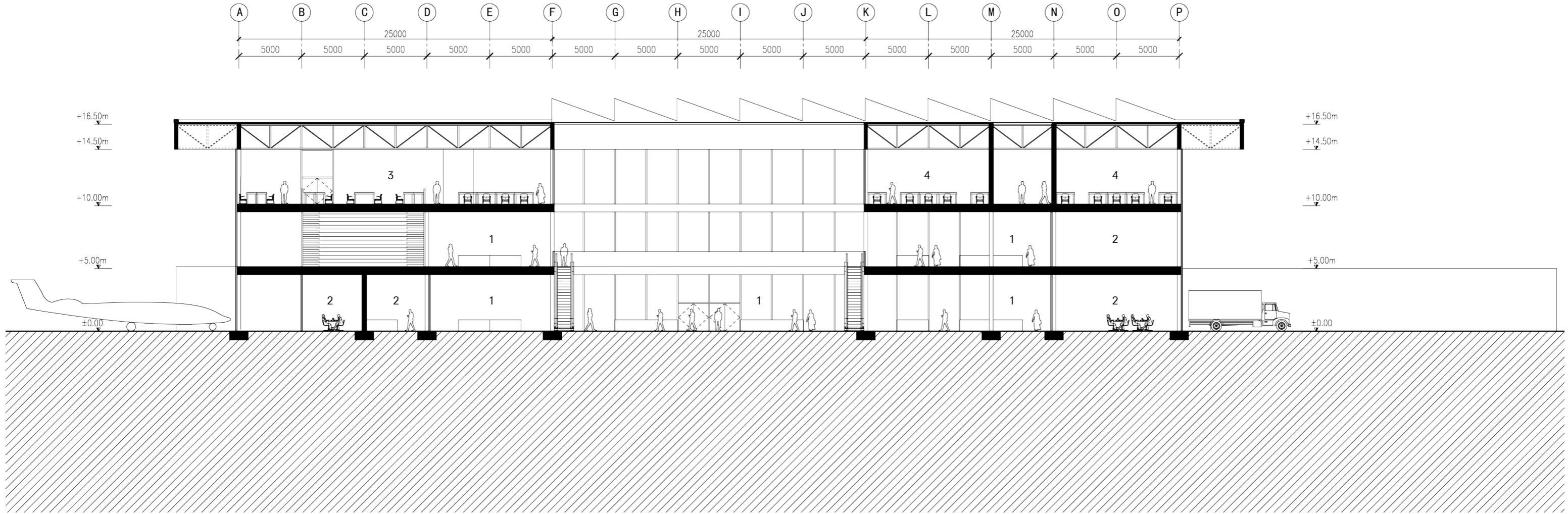


- 1 education area
- 2 classroom with flexible sliding door
- 3 classroom
- 4 office area
- 5 rent-able office room
- 6 relaxation lounge
- 7 roof garden
- 8 canteen
- 9 kitchen
- 10 kitchen storage
- 11 recreation room
- 12 sleeping room
- 13 relaxation lounge
- 14 thermal and therapy
- 15 therapy room
- 16 infirmary

2F 1:200

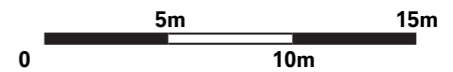


CARGO PLUS SECTIONS

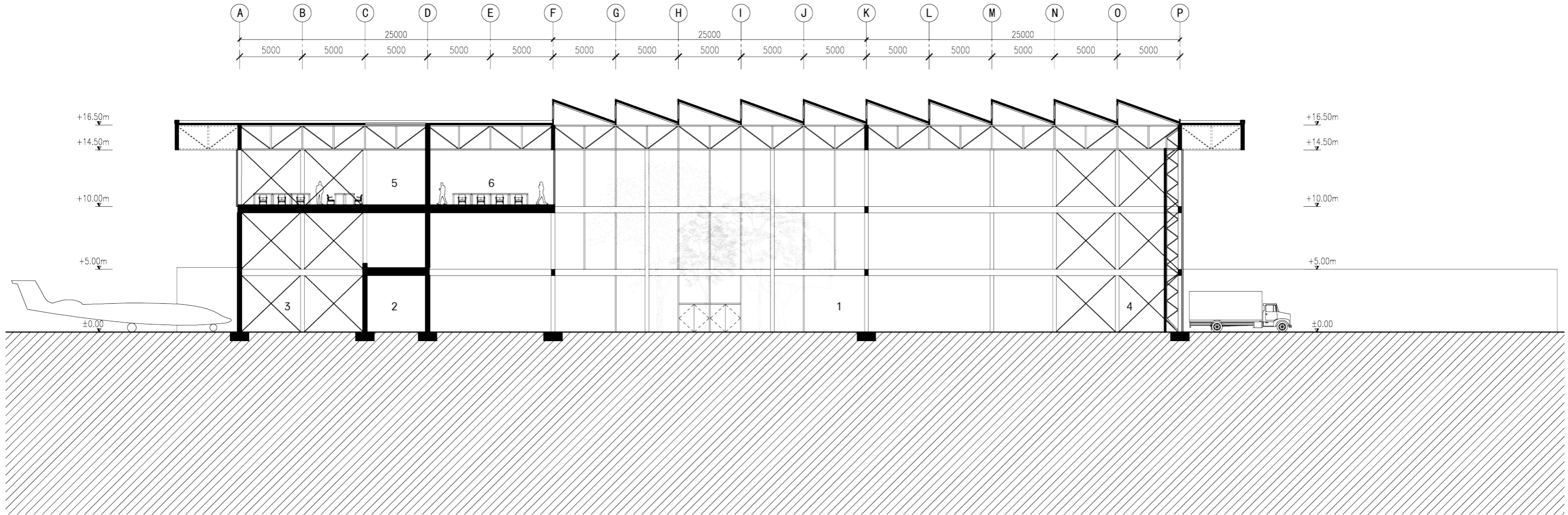


- 1 public market
- 2 retail
- 3 self-study area
- 4 classroom

SECTION A-A 1:200

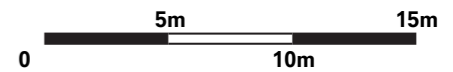


CARGO PLUS SECTIONS

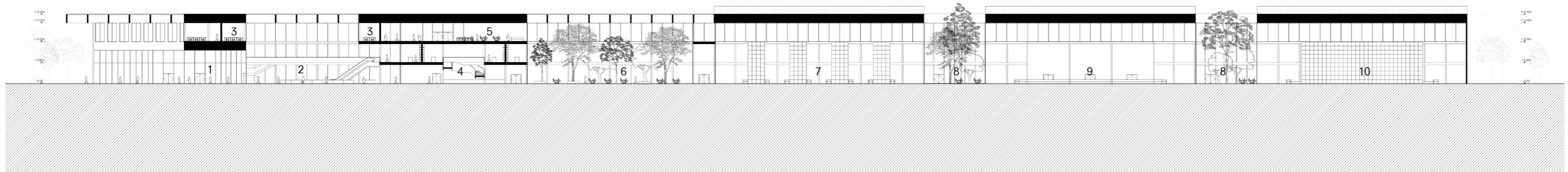


- 1 warehouse storage and sorting area
- 2 customs check
- 3 airside reception
- 4 landside reception
- 5 office open space
- 6 office room

SECTION B-B 1:200

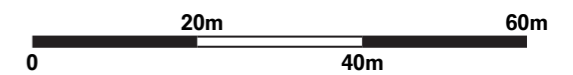


CARGO PLUS SECTIONS



- 1 entrance
- 2 public open market
- 3 classroom
- 4 cabinet of curiosity
- 5 canteen
- 6 enclosed patio
- 7 urgent goods warehouse
- 8 outdoor patio
- 9 perishable goods warehouse
- 10 generic goods warehouse

SECTION C-C 1:200



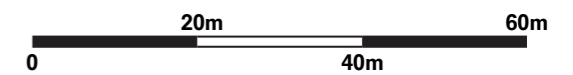
CARGO PLUS
ELEVATION



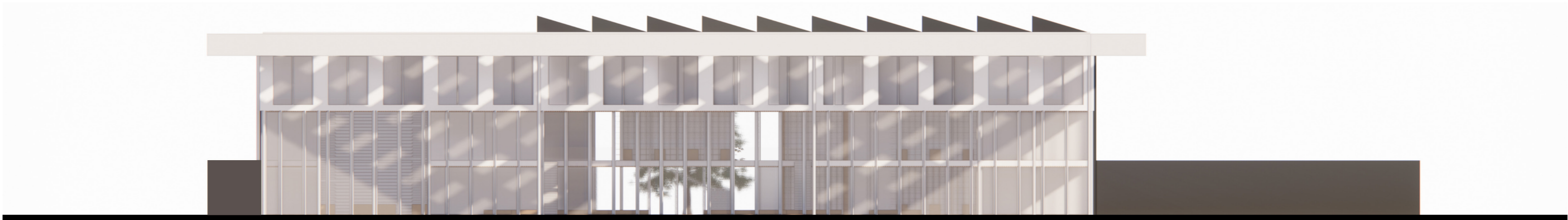
NORTH ELEVATION 1:200



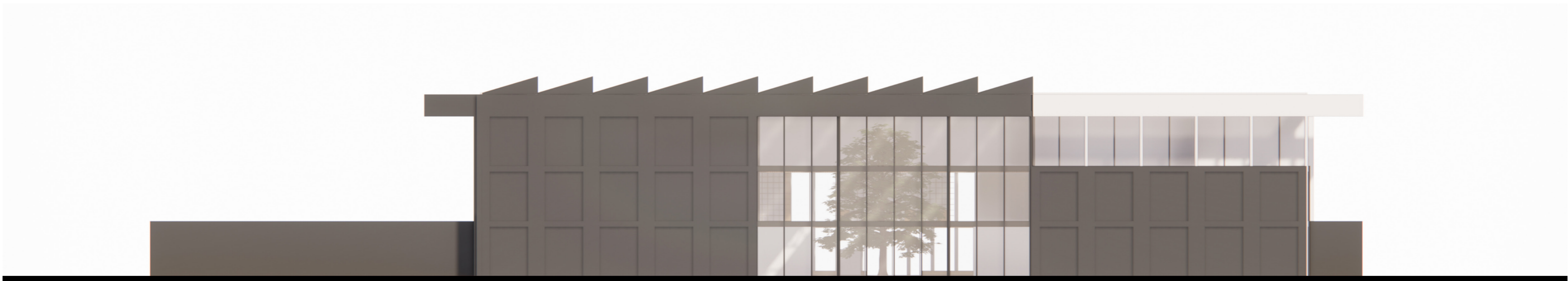
SOUTH ELEVATION 1:200



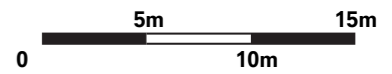
CARGO PLUS
ELEVATION



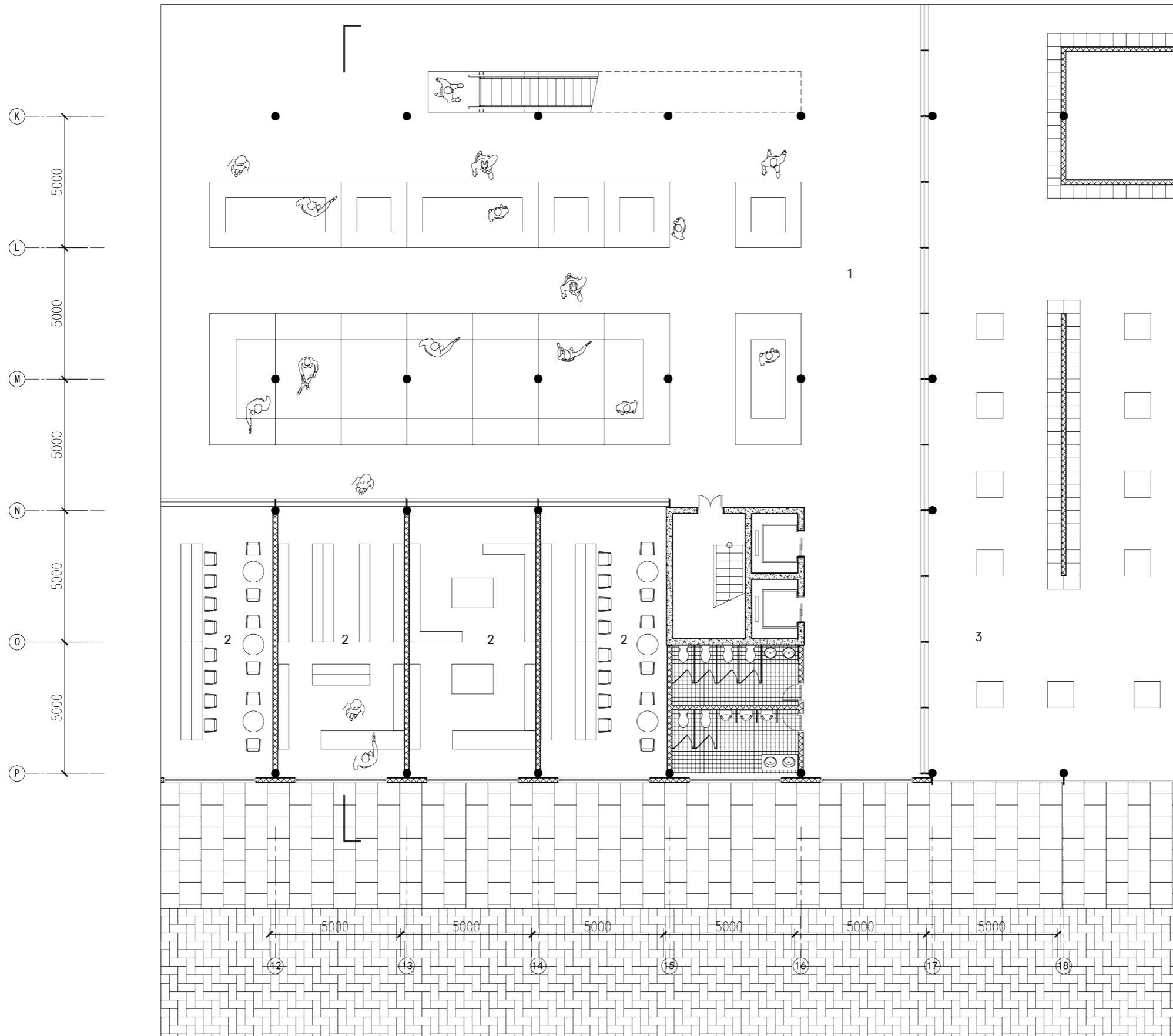
WEST ELEVATION 1:200



EAST ELEVATION 1:200

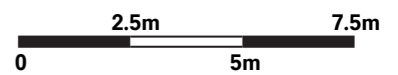


CARGO PLUS INTERIOR FRAGMENT

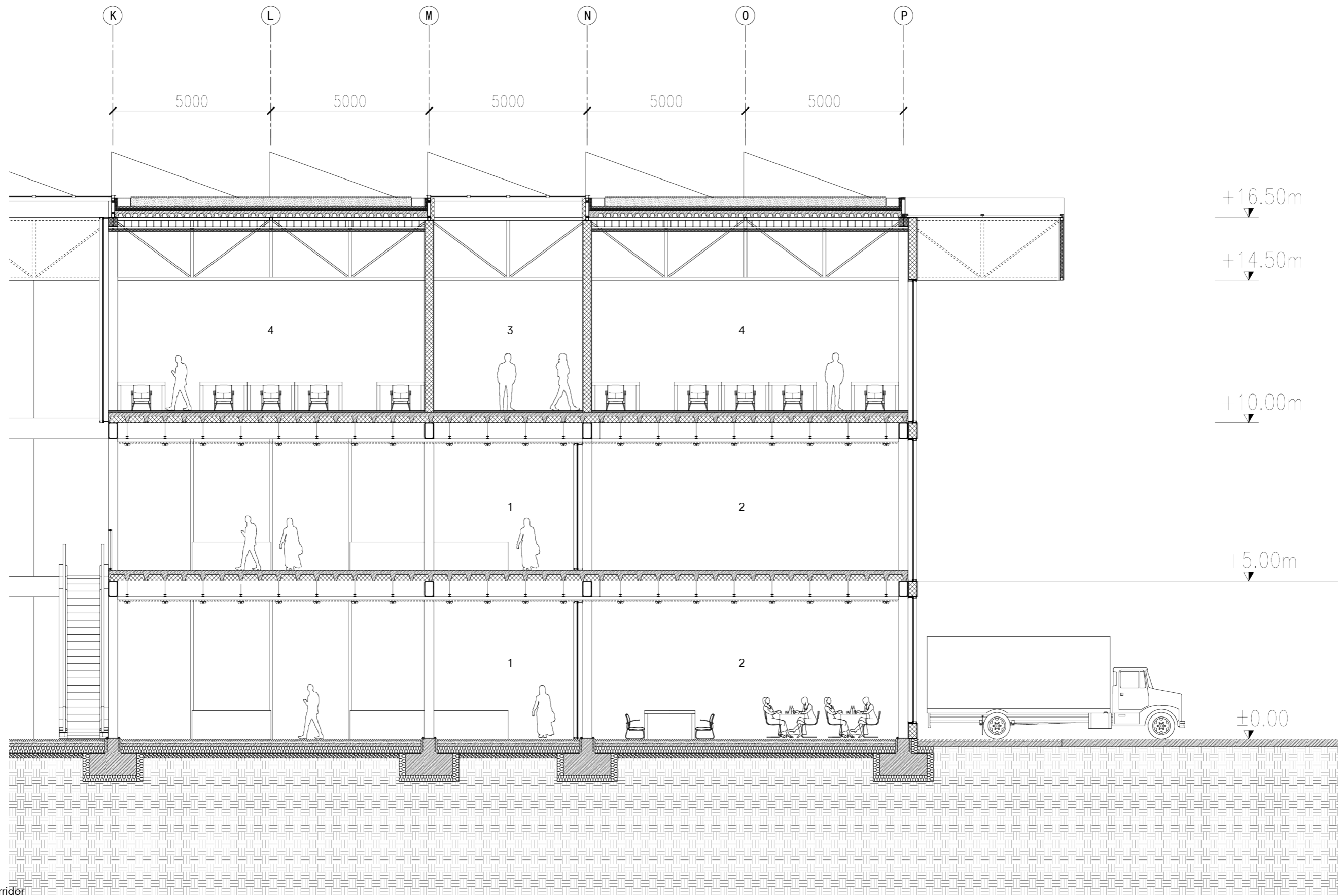


- 1 public open market
- 2 retail
- 3 cabinet of curiosity

INTERIOR FRAGMENT 1:50

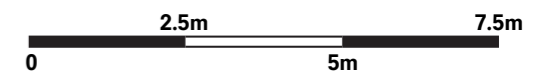


CARGO PLUS INTERIOR FRAGMENT

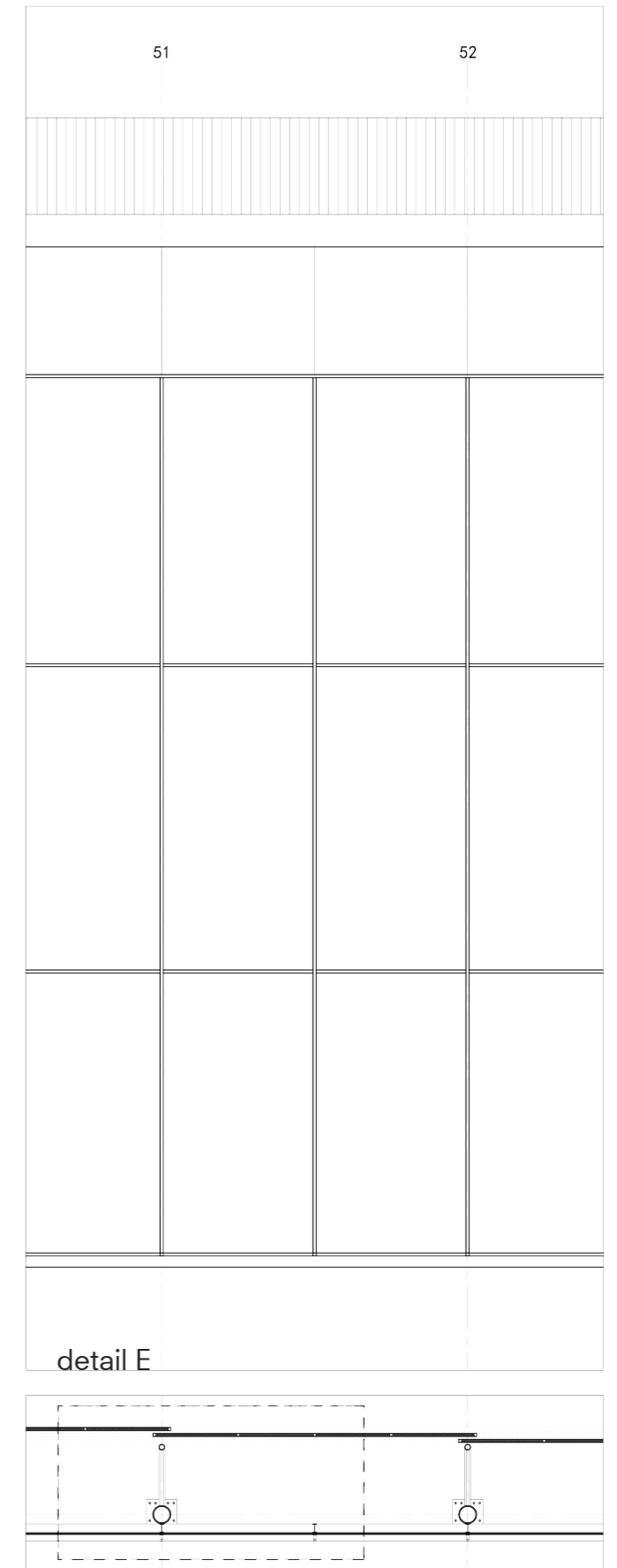
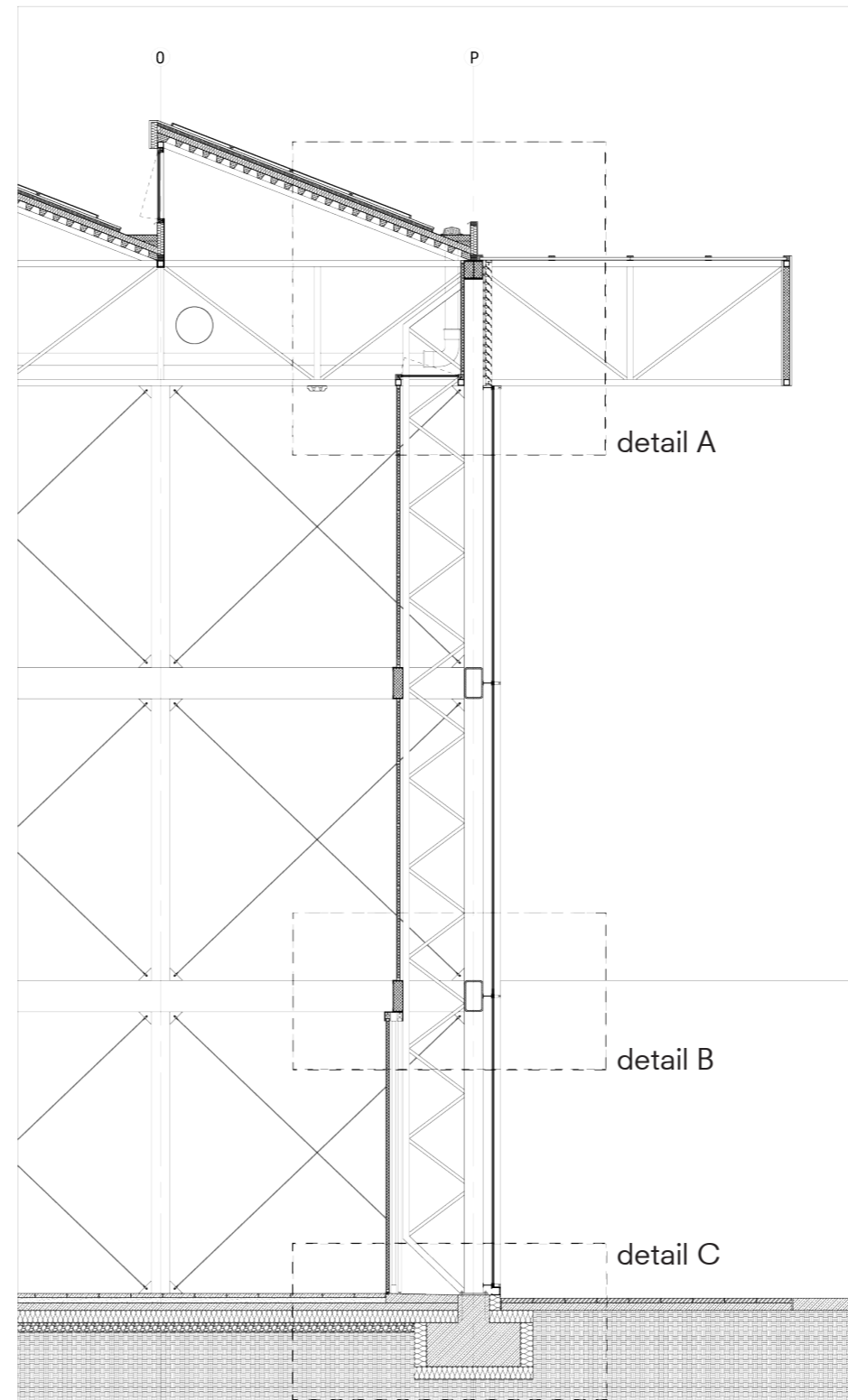
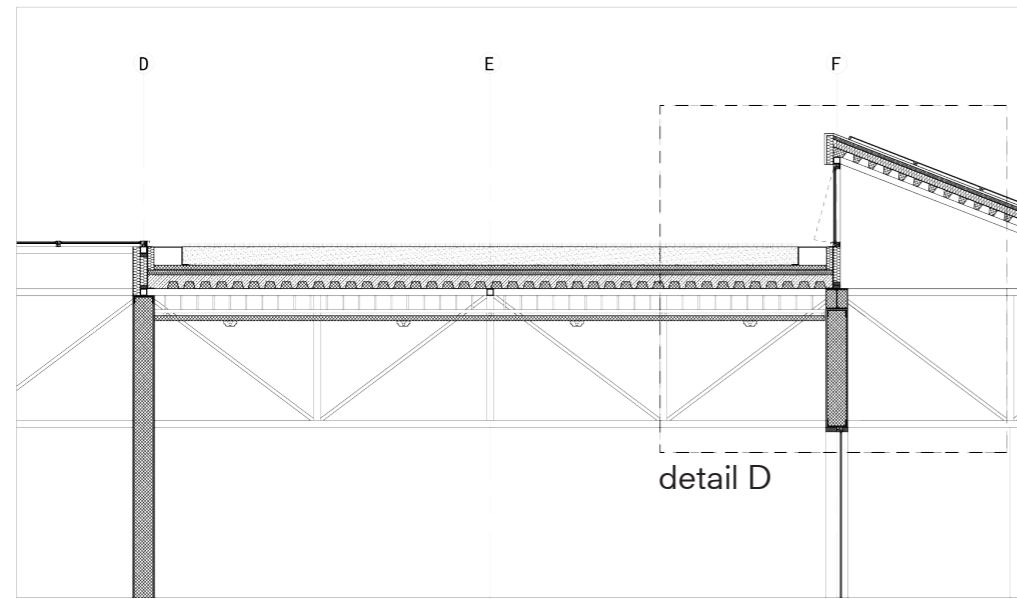


- 1 public open market
- 2 retail
- 3 educational area corridor
- 4 classroom

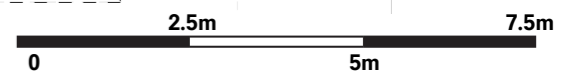
INTERIOR FRAGMENT 1:50



CARGO PLUS ENVELOPE FRAGMENT



ENVELOPE FRAGMENT 1:20



CARGO PLUS DETAILS

1
photovoltaic module on aluminium frame
30.5/0.6 mm pre-bent corrugated sheet
steel decking
sealant layer
150mm thermal insulation
vapour barrier
acoustical insulation
acoustical steel deck

2
gutter

3
40mm polycarbonate panel

4
2000mm steel truss

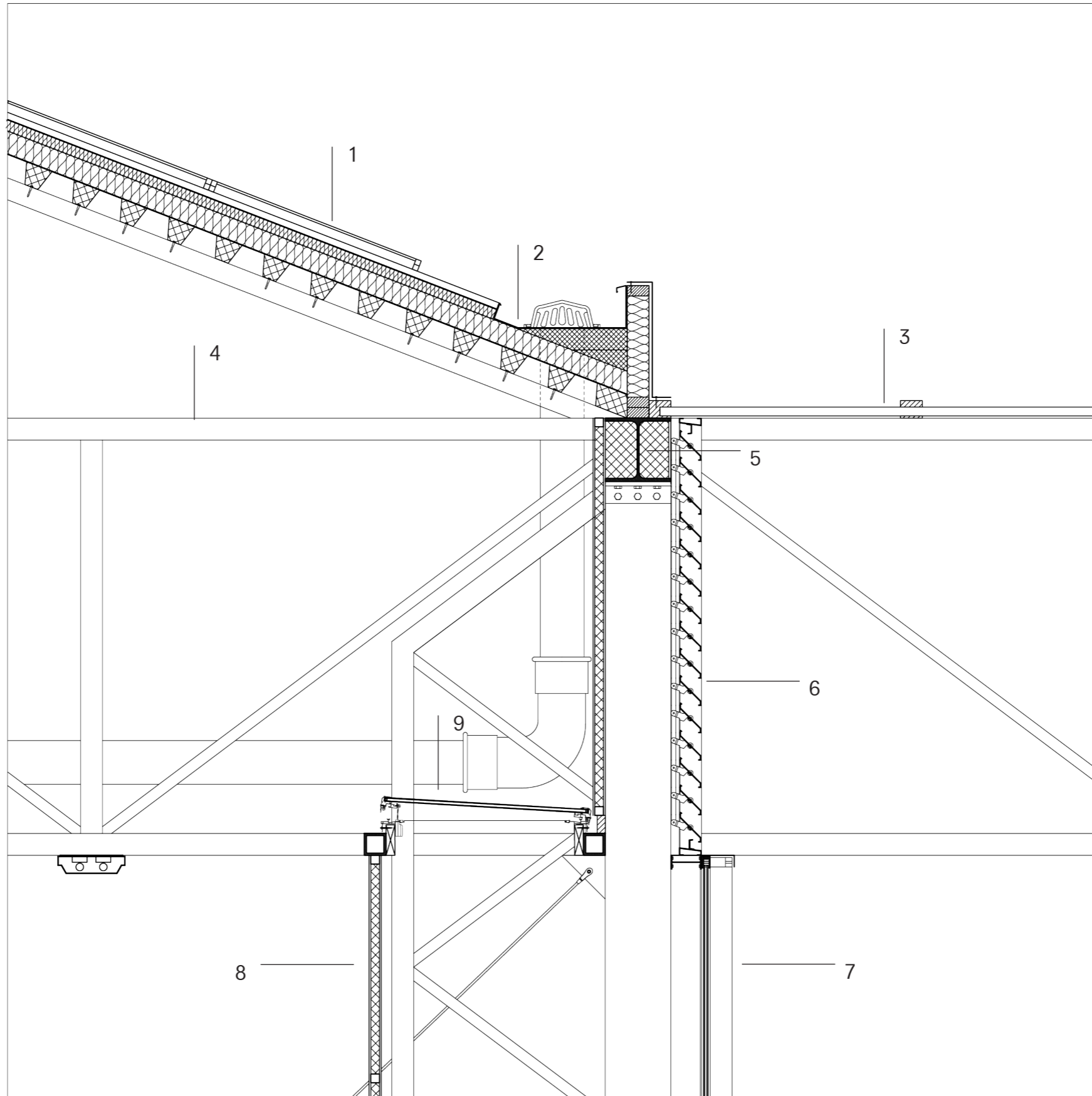
5
300mm I beams

6
140mm operable aluminium louvre

7
sun protecting glazing: 8 mm float
glass + 16 mm cavity + 2x 5 mm
laminated safety glass

8
8 mm galv. corrugated sheet steel
sandwich panel sliding gate,
white finish on 60/40 mm steel
RHS frame; 40 mm inlaid thermal
insulation; 8 mm galv. corrugated
sheet steel, white finish

9
mechanically operable window



DETAIL A 1:5



CARGO PLUS DETAILS

1
8 mm galv. corrugated sheet steel sandwich panel sliding gate, white finish on 60/40 mm steel RHS frame; 40 mm inlaid thermal insulation; 8 mm galv. corrugated sheet steel, white finish

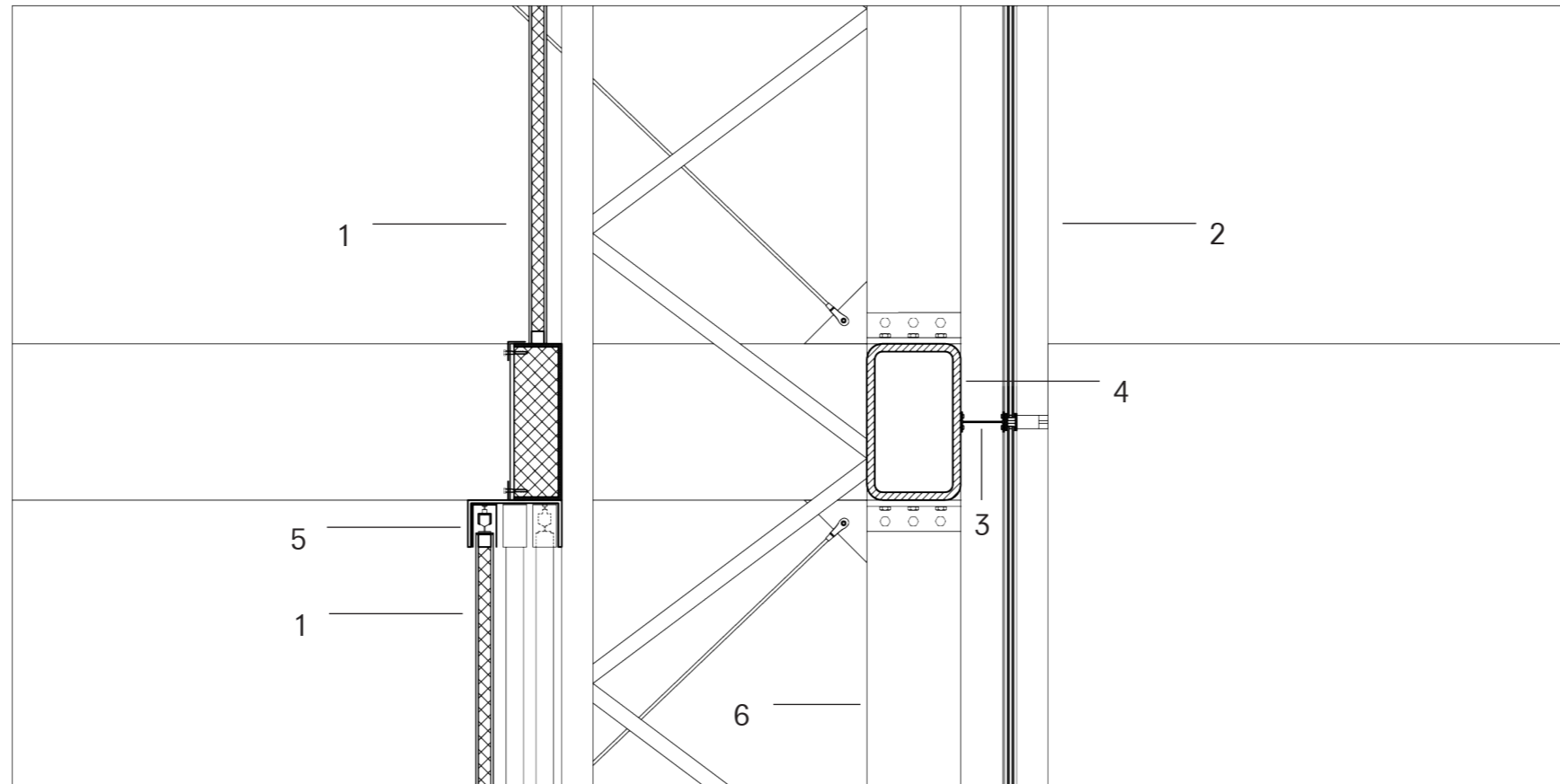
2
sun protecting glazing: 8 mm float glass + 16 mm cavity + 2× 5 mm laminated safety glass

3
steel I-section rail 140mm deep (IPE 140), mechanically stressed

4
300mm/500mm rectangular steel beam, black coating

5
150/300 steel channel sliding gate lintel

6
300mm diameter circular steel column, black coating



DETAIL B 1:5



CARGO PLUS DETAILS

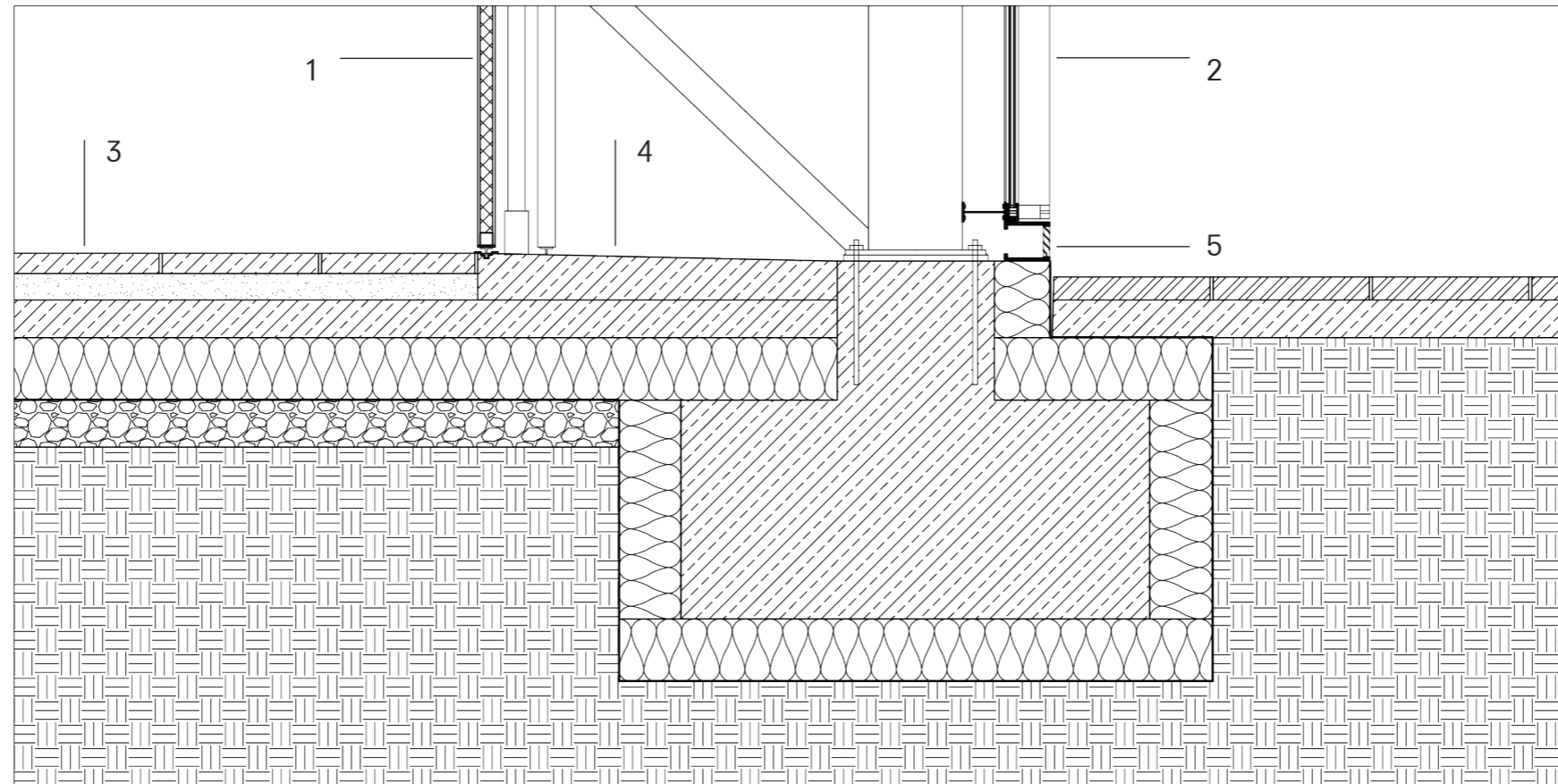
1
8 mm galv. corrugated sheet steel
sandwich panel sliding gate,
white finish on 60/40 mm steel
RHS frame; 40 mm inlaid thermal
insulation; 8 mm galv. corrugated
sheet steel, white finish

2
sun protecting glazing: 8 mm float
glass + 16 mm cavity + 2x 5 mm
laminated safety glass

3
floor construction:
65 mm concrete pavers
85 mm mortar bed
120 mm reinforced concrete floor
200 insulation
sealant layer
150 crushed stone drainage layer

4
150 mm reinf. concrete to falls,
hydrophobic treatment;

5
operable aluminium louvre



DETAIL C 1:5



CARGO PLUS DETAILS

1
vegetation layer
50 mm substrate
70mm drainage layer
70 mm thermal insulation
vapour barrier
reinforced concrete composite ceiling
acoustic insulation

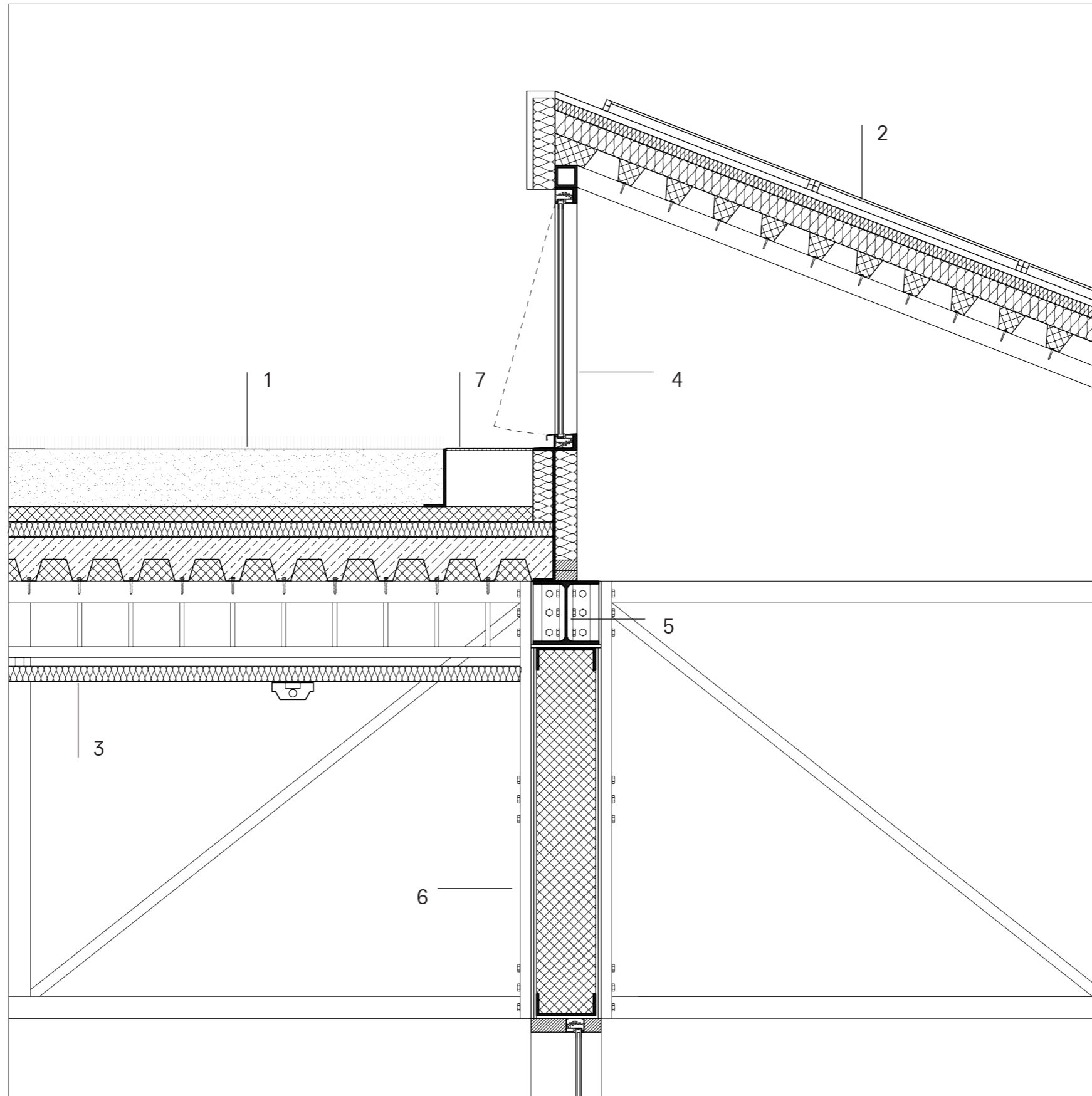
2
photovoltaic module on aluminium frame
30.5/0.6 mm pre-bent corrugated sheet
steel decking
sealant layer
150mm thermal insulation
vapour barrier
acoustical insulation
acoustical steel deck

3
2 mm perforated aluminium
acoustic panel

4
mechanically operable window

5
300mm I beams

6
wall construction:
2x 12.5 mm gypsum board;
vapour barrier;
250 mm steel channel
250 mm inlaid mineral
wool thermal insulation
2x 12.5 mm waterproof gypsum



DETAIL D 1:5



CARGO PLUS DETAILS

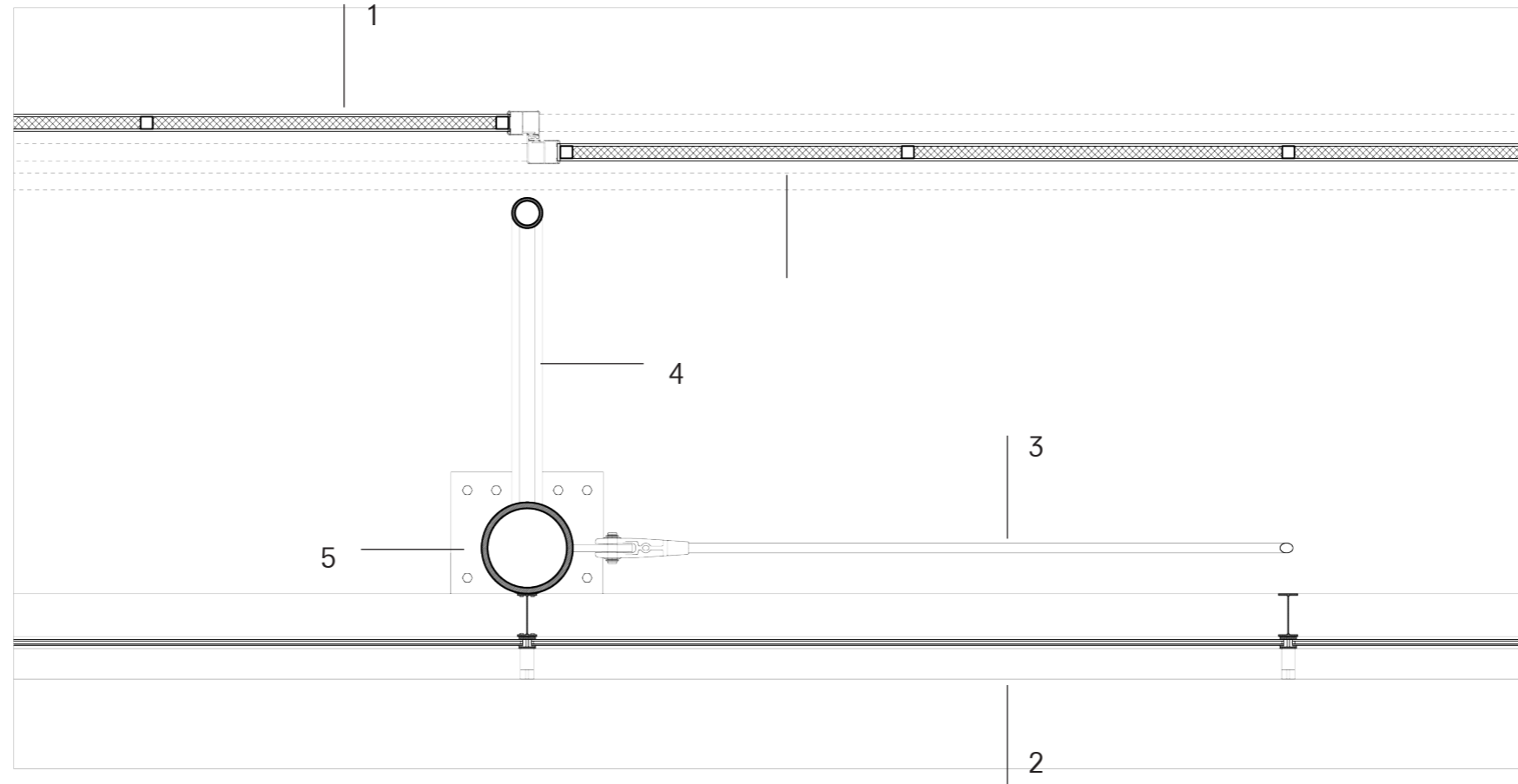
1
sliding door construction:
8 mm galv. corrugated sheet steel
sandwich panel sliding gate,
white finish on 60/40 mm steel
RHS frame; 40 mm inlaid thermal
insulation; 8 mm galv. corrugated
sheet steel, white finish

2
sun protecting glazing: 8 mm float
glass + 16 mm cavity + 2× 5 mm
laminated safety glass

3
X-shaped steel bracing with tension rod

4
steel wind bracing systems for high glass
curtain walls

5
300mm diameter circular steel column
black coating



DETAIL E 1:5

