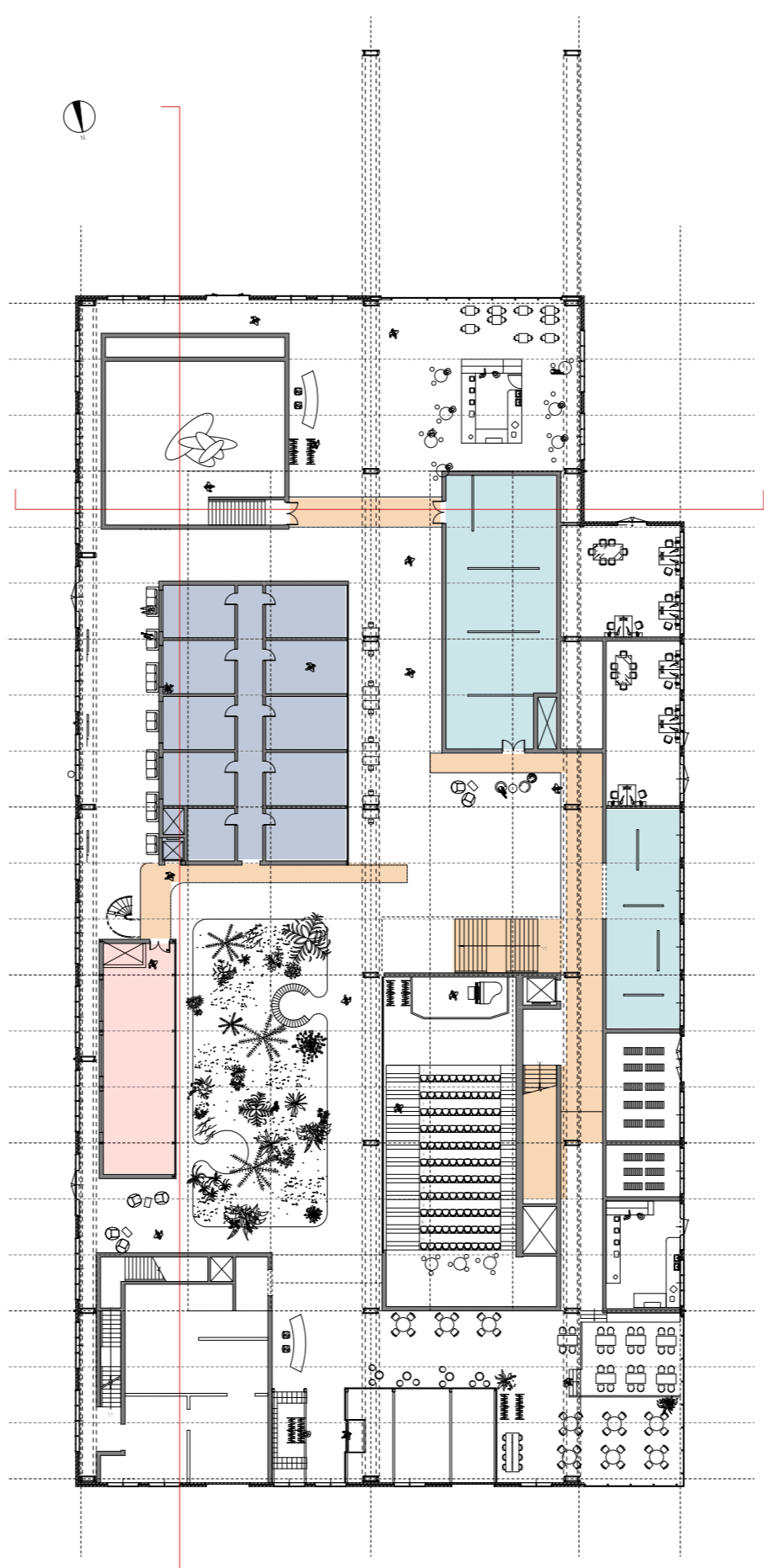
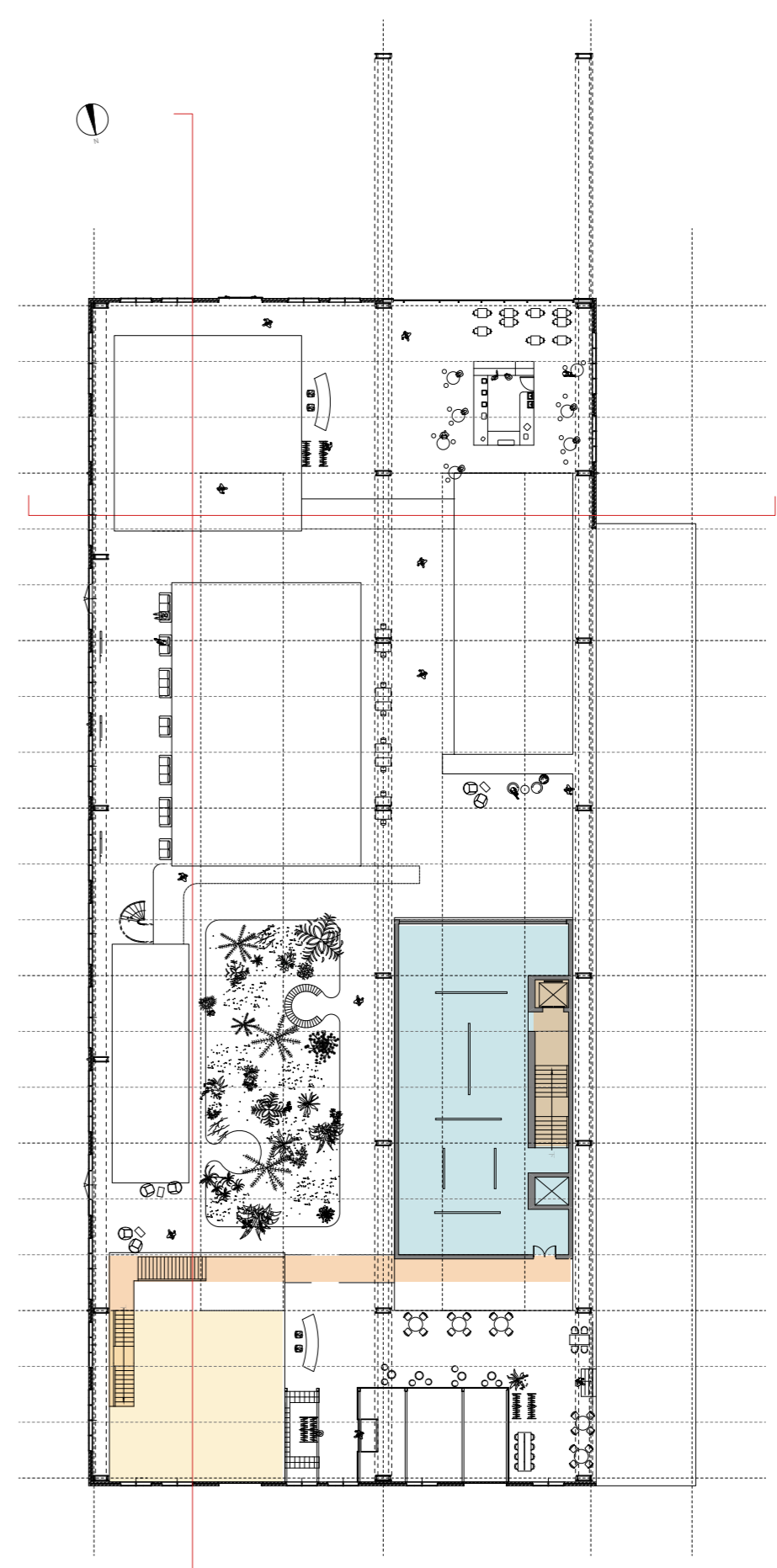


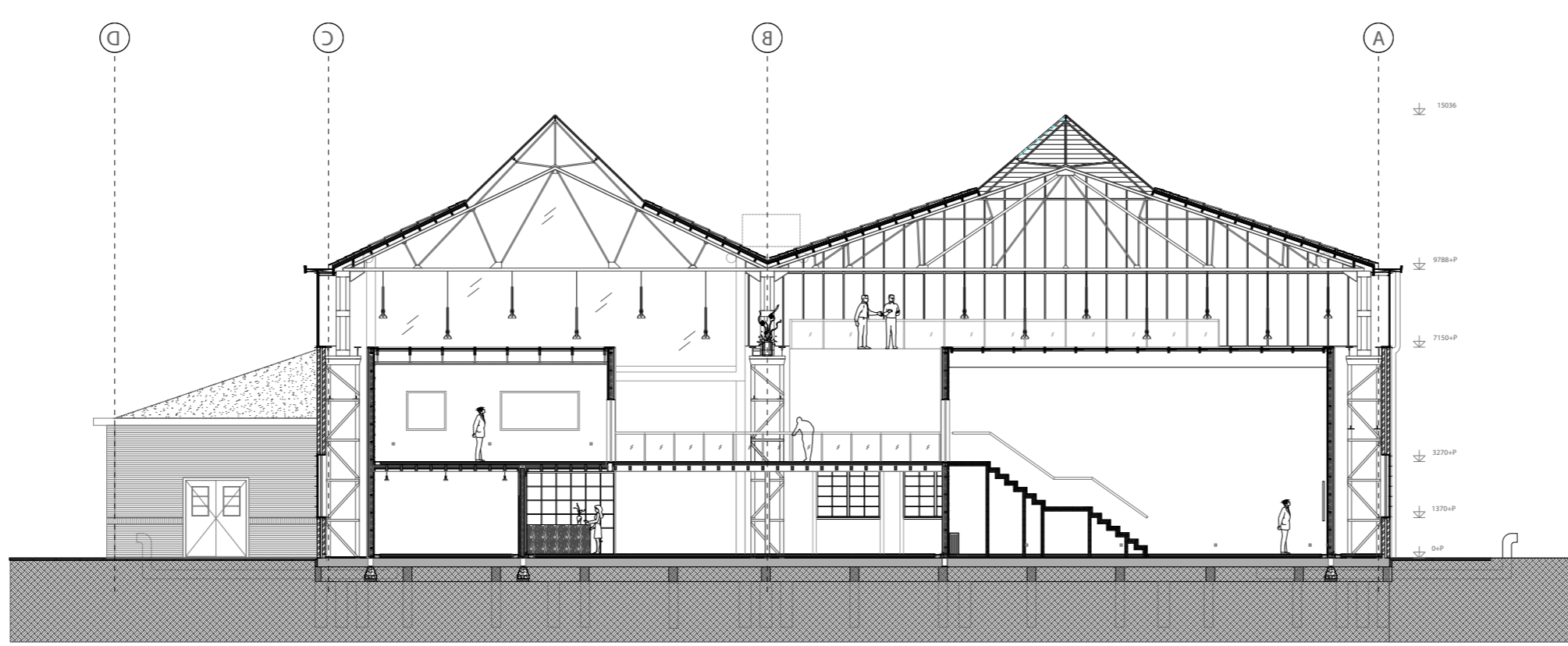
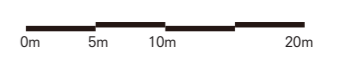
Level 00



Level 01



Level 02

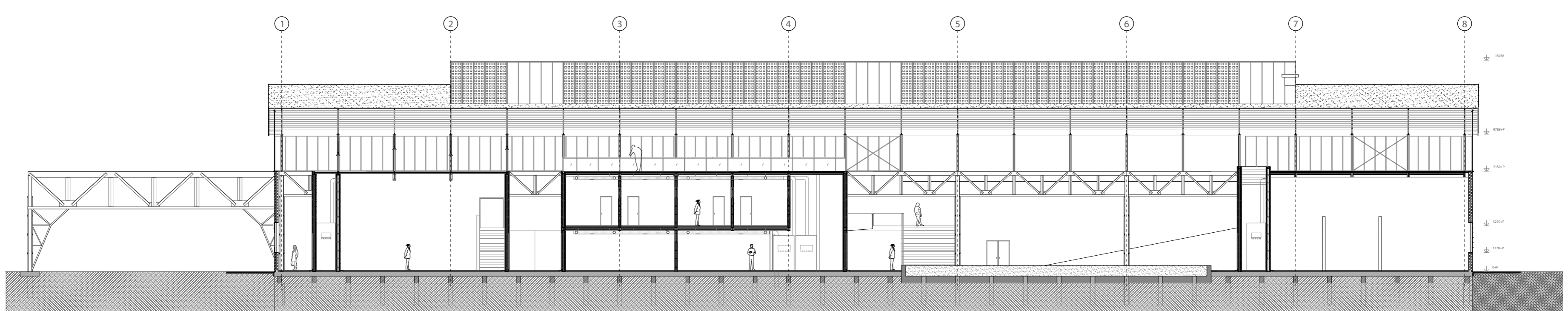


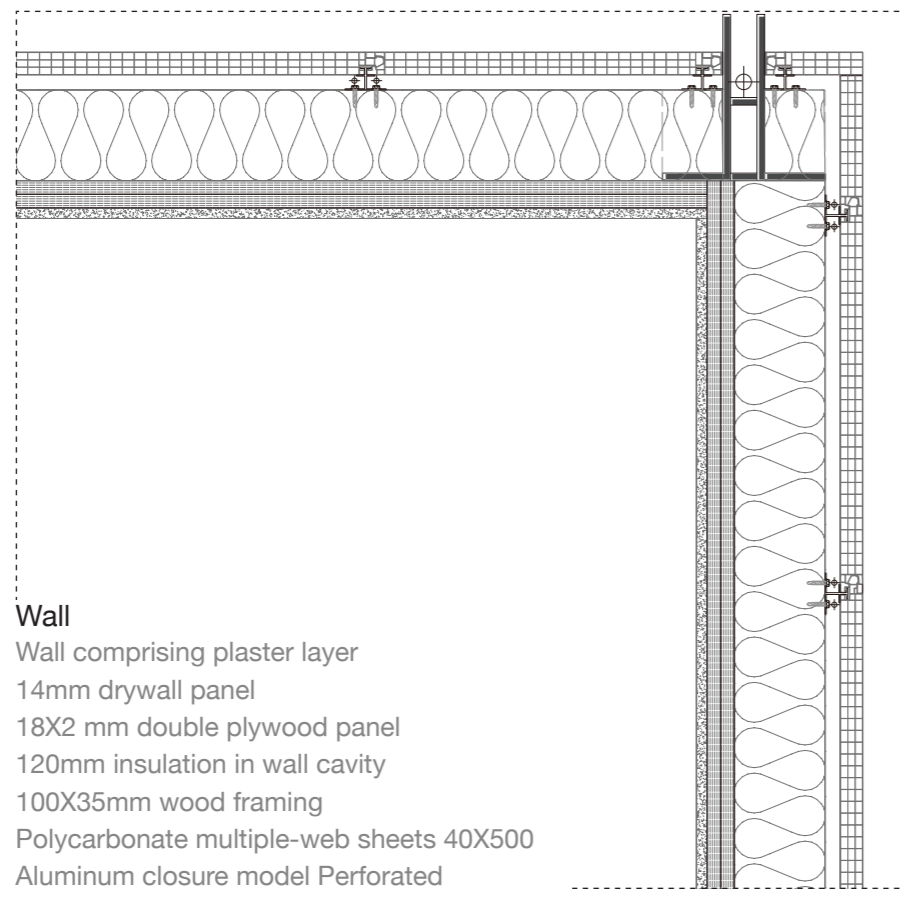
**First Floor**

steel I-beam 300 mm deep  
 steel I-section column 300 mm deep  
 sheet aluminium on 18 mm plywood  
 timber beam 75X140 mm plywood  
 8 double glazing: 6 mm + 7 mm float glass +  
 15 mm cavity (U = 1 Wm2K)

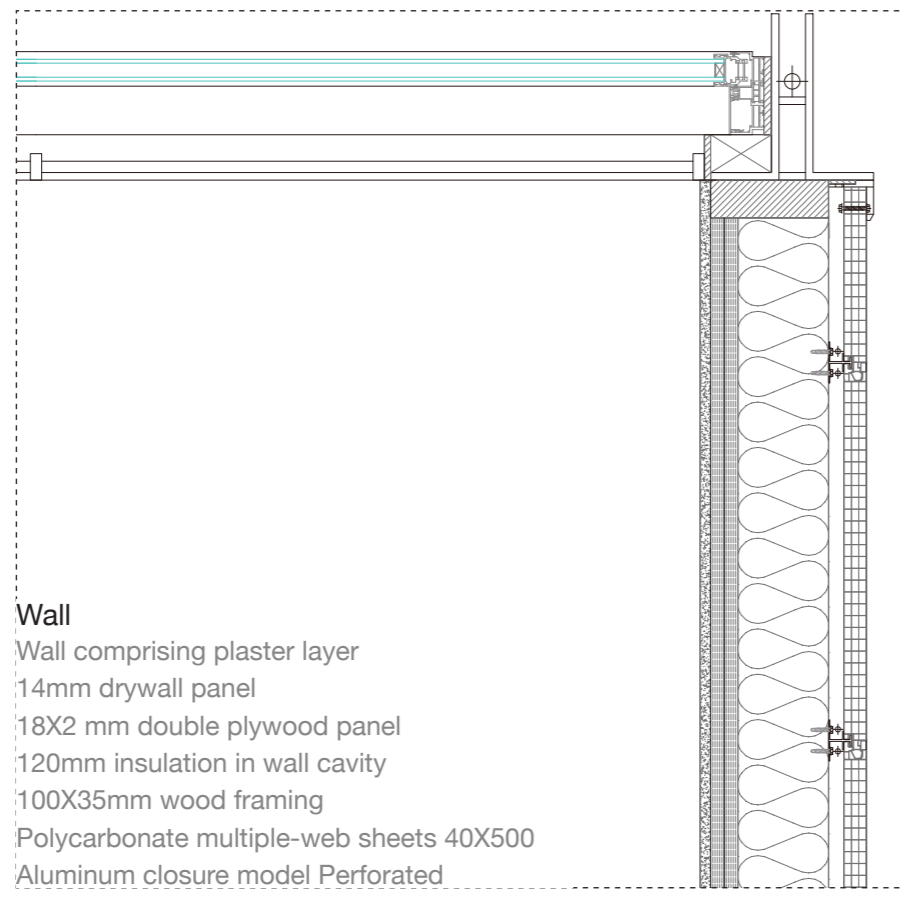
**Ground Floor (In-between)**

Neat cement slurry finish  
 60mm concrete floor  
 (with embedded radiant heating)  
 35mm rigid insulation 22mm leveling screed  
 161mm reinforced concrete slab

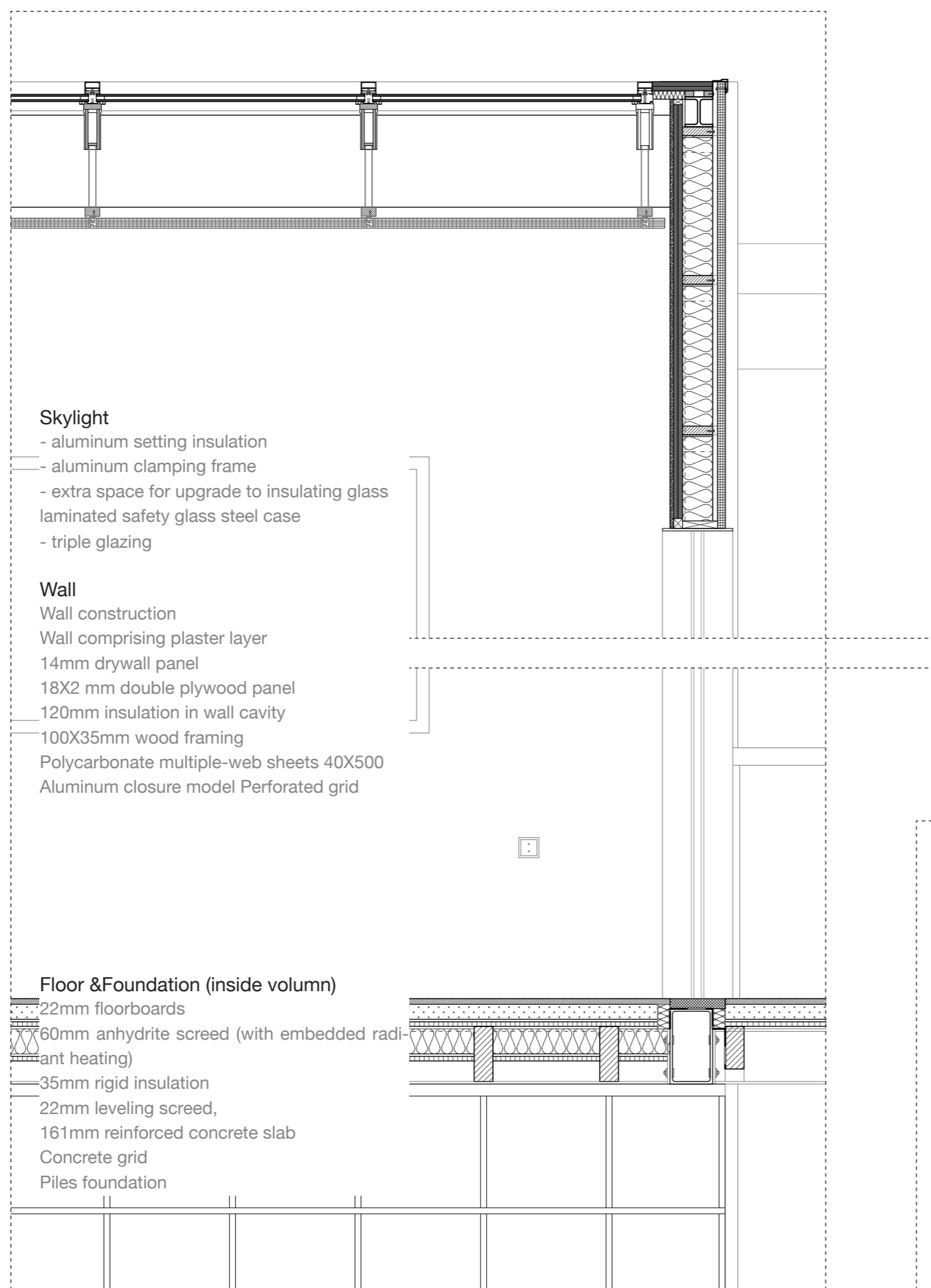
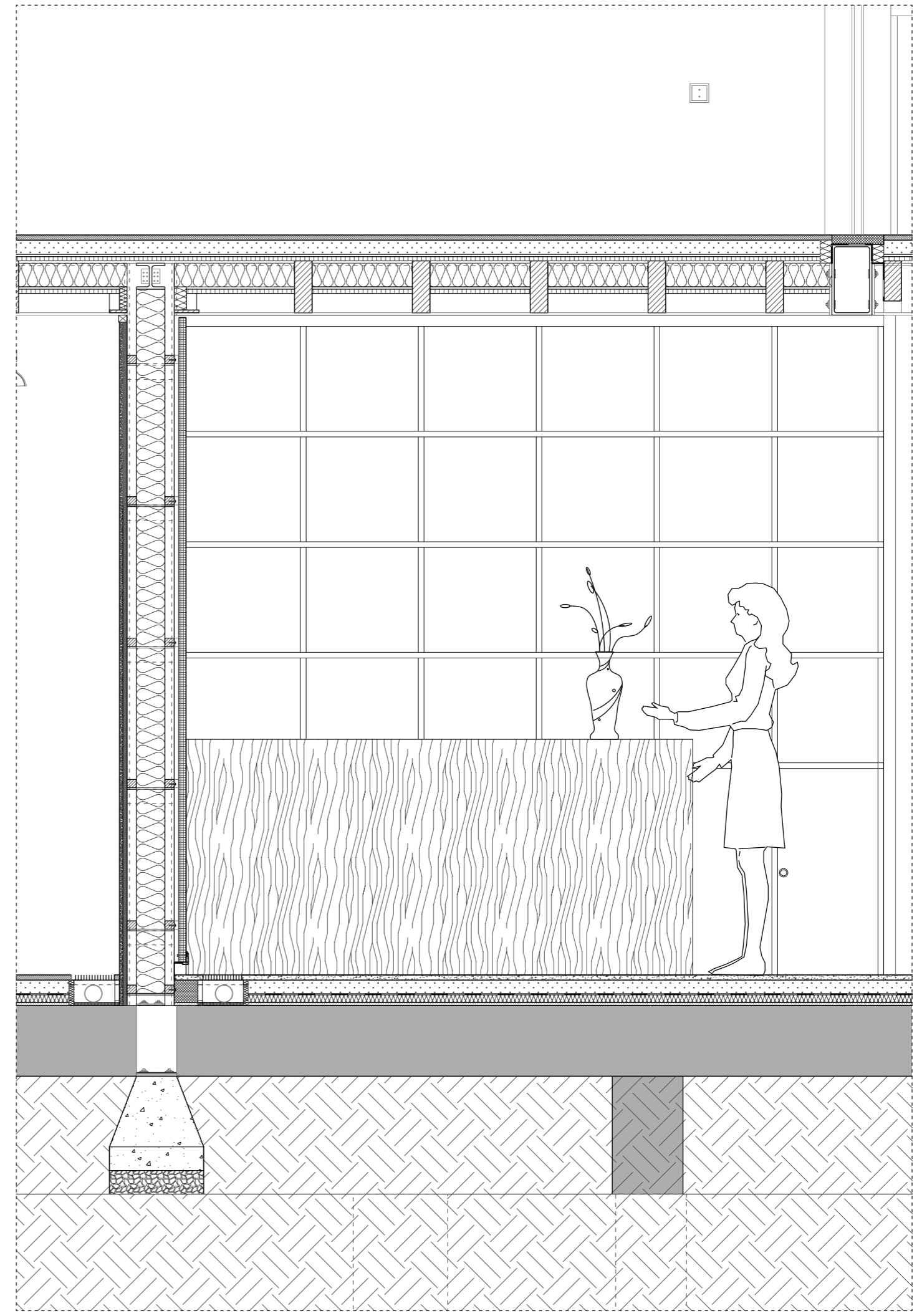
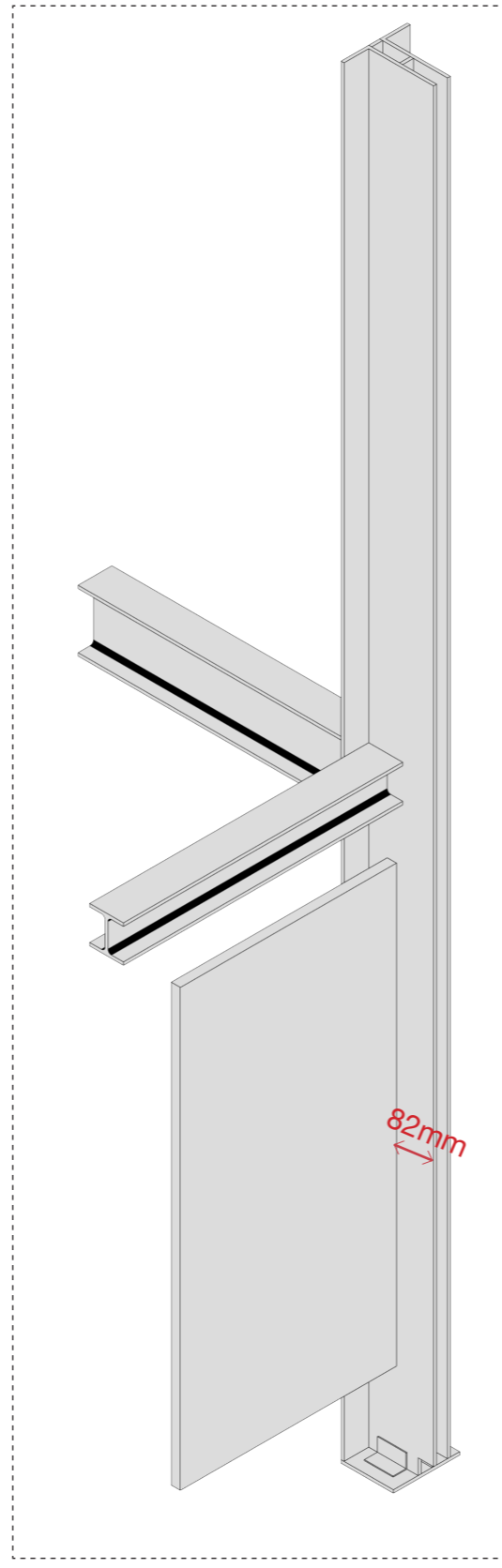




**Wall**  
 Wall comprising plaster layer  
 14mm drywall panel  
 18X2 mm double plywood panel  
 120mm insulation in wall cavity  
 100X35mm wood framing  
 Polycarbonate multiple-web sheets 40X500  
 Aluminum closure model Perforated



**Wall**  
 Wall comprising plaster layer  
 14mm drywall panel  
 18X2 mm double plywood panel  
 120mm insulation in wall cavity  
 100X35mm wood framing  
 Polycarbonate multiple-web sheets 40X500  
 Aluminum closure model Perforated

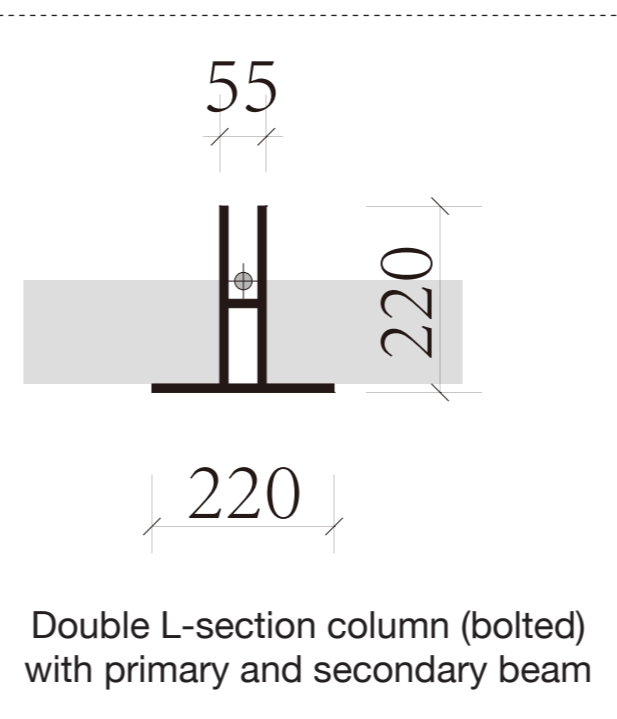
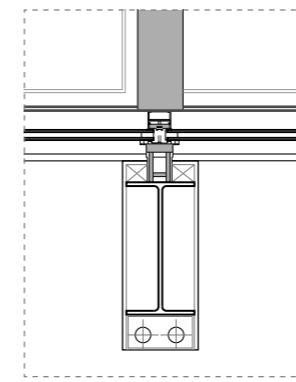


**Skylight**  
 - aluminum setting insulation  
 - aluminum clamping frame  
 - extra space for upgrade to insulating glass  
 laminated safety glass steel case  
 - triple glazing

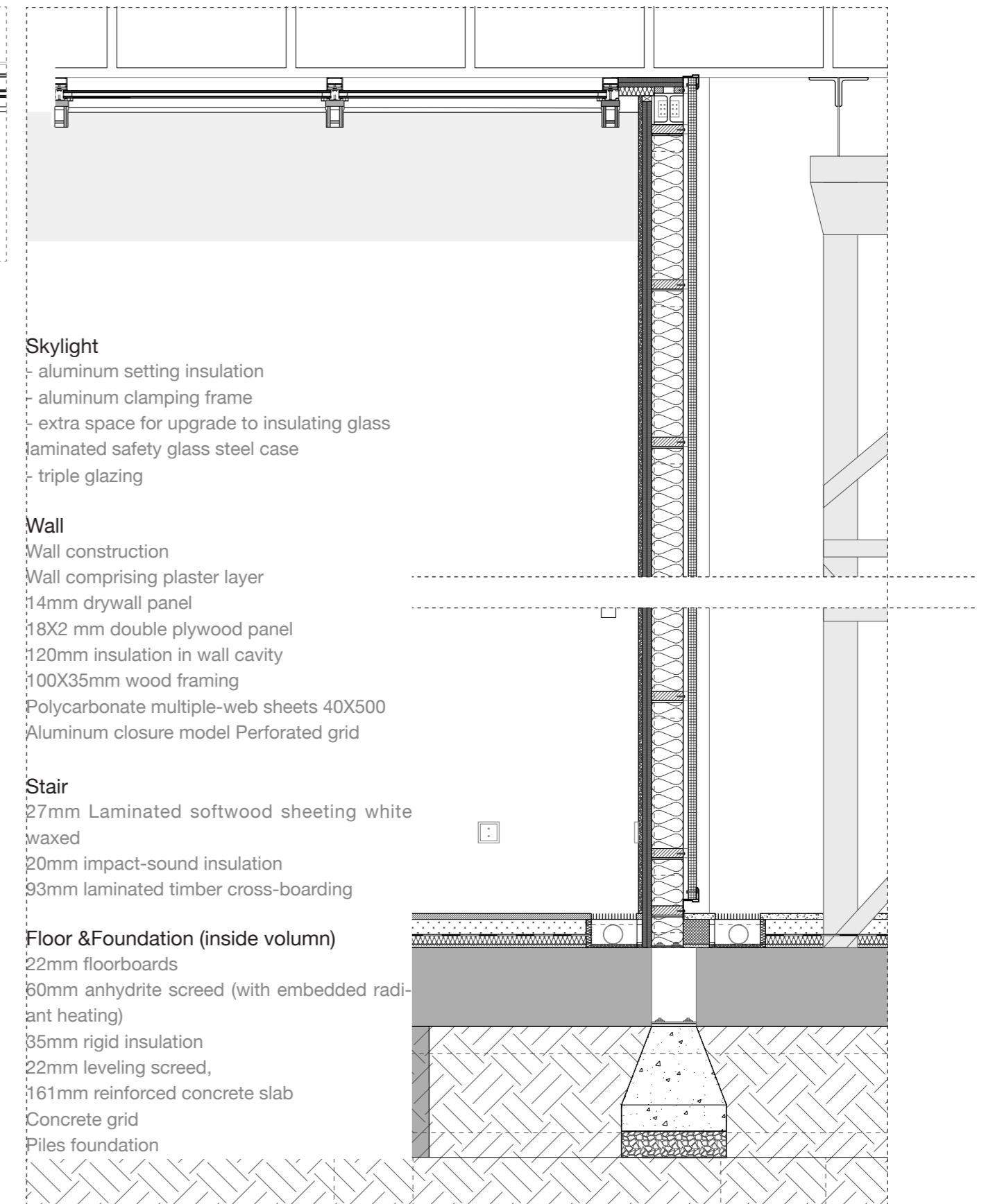
**Wall**  
 Wall construction  
 Wall comprising plaster layer  
 14mm drywall panel  
 18X2 mm double plywood panel  
 120mm insulation in wall cavity  
 100X35mm wood framing  
 Polycarbonate multiple-web sheets 40X500  
 Aluminum closure model Perforated grid

**Floor & Foundation (inside volume)**

22mm floorboards  
 60mm anhydrite screed (with embedded radiant heating)  
 35mm rigid insulation  
 22mm leveling screed,  
 161mm reinforced concrete slab  
 Concrete grid  
 Piles foundation



Double L-section column (bolted)  
 with primary and secondary beam



**Skylight**  
 - aluminum setting insulation  
 - aluminum clamping frame  
 - extra space for upgrade to insulating glass  
 laminated safety glass steel case  
 - triple glazing

**Wall**  
 Wall construction  
 Wall comprising plaster layer  
 14mm drywall panel  
 18X2 mm double plywood panel  
 120mm insulation in wall cavity  
 100X35mm wood framing  
 Polycarbonate multiple-web sheets 40X500  
 Aluminum closure model Perforated grid

**Stair**  
 27mm Laminated softwood sheeting white waxed  
 20mm impact-sound insulation  
 93mm laminated timber cross-boarding

**Floor & Foundation (inside volume)**  
 22mm floorboards  
 60mm anhydrite screed (with embedded radiant heating)  
 35mm rigid insulation  
 22mm leveling screed,  
 161mm reinforced concrete slab  
 Concrete grid  
 Piles foundation

