



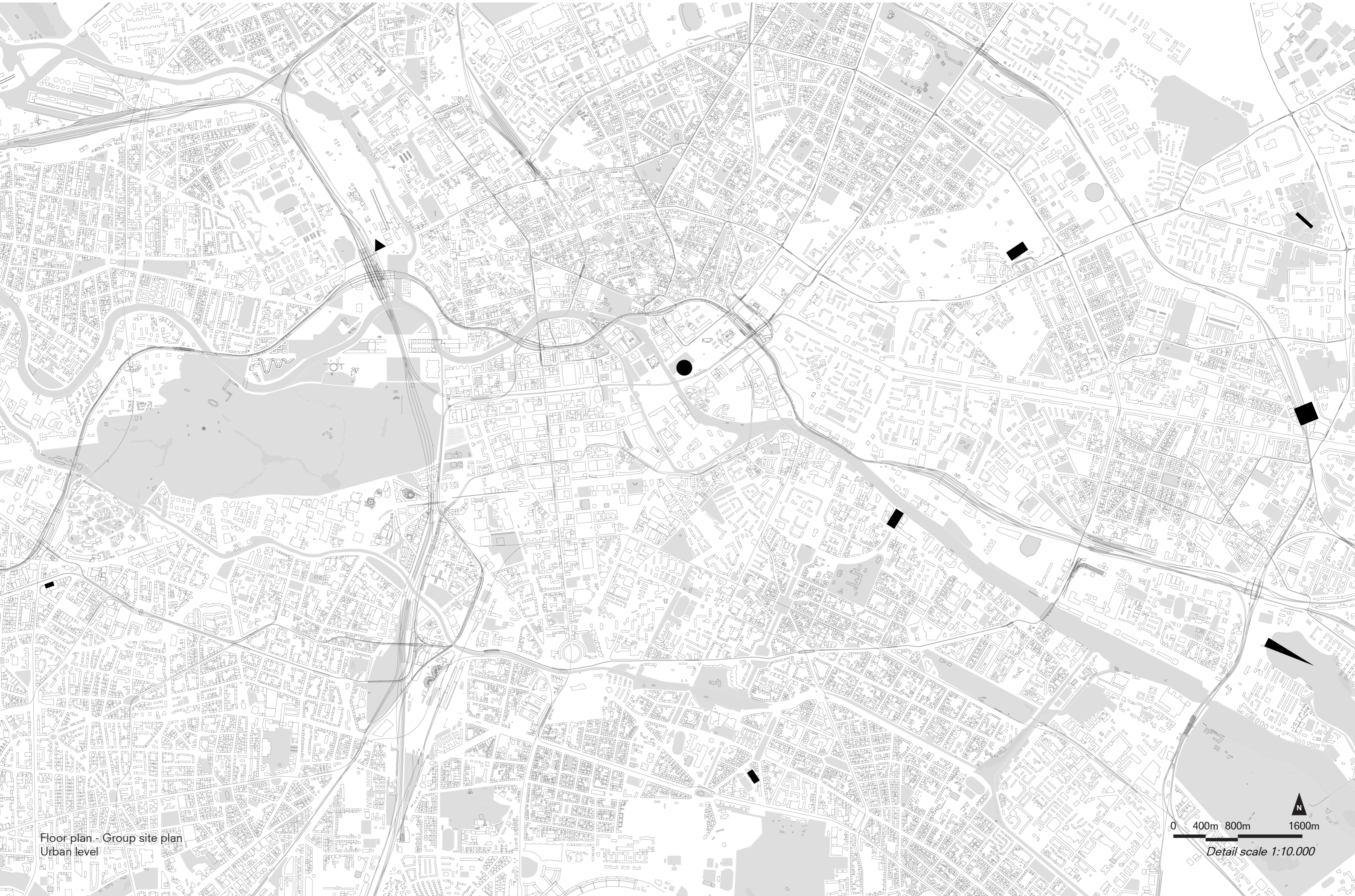
COMPLEX PROJECTS

ECHOES OF TOMORROW

A PARLIAMENT OF NATURAL THINGS FOR BERLIN

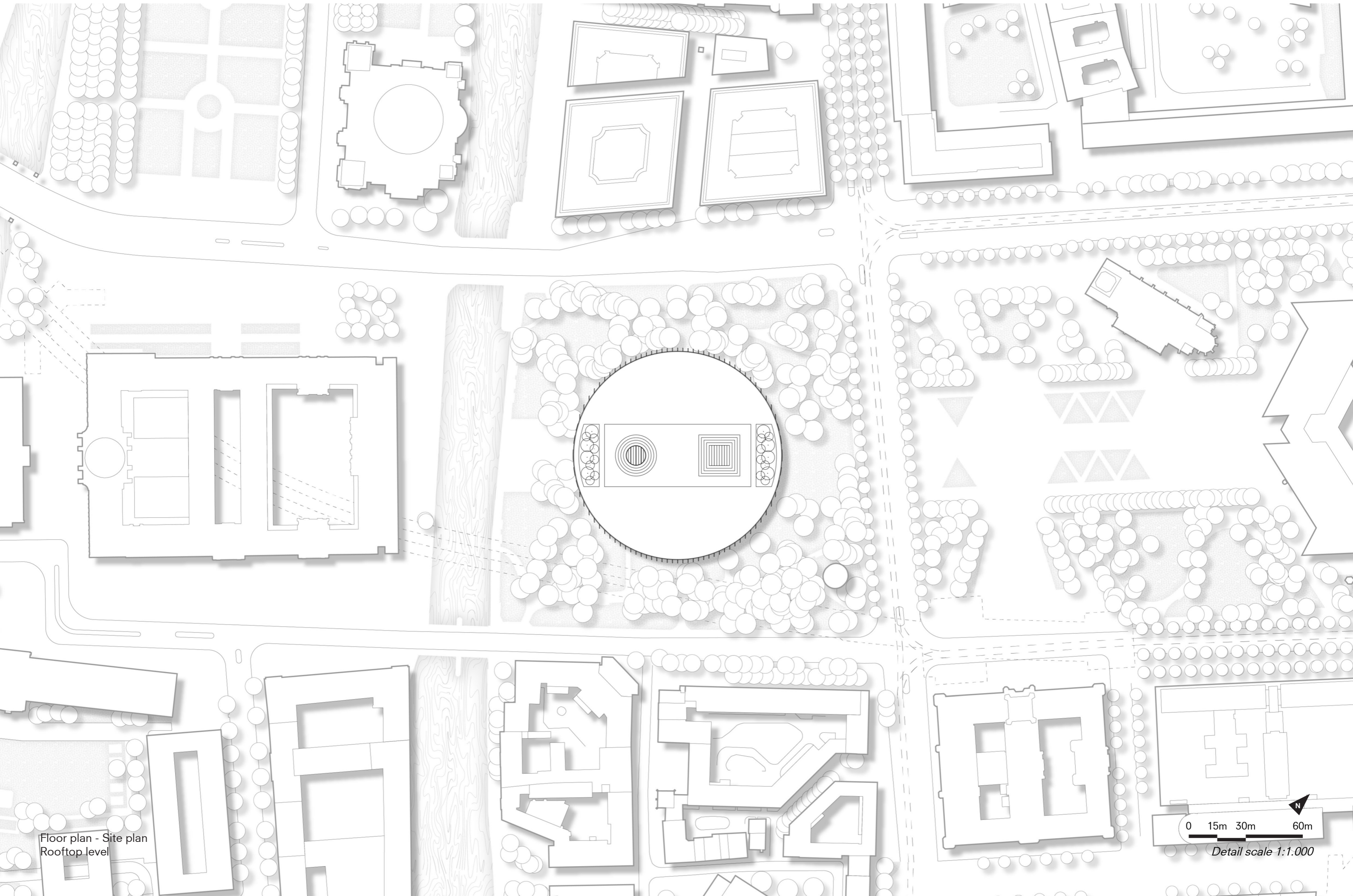
Vittorio Domanda

Drawing set

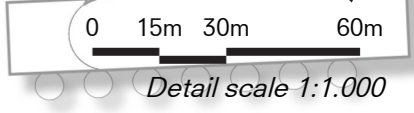


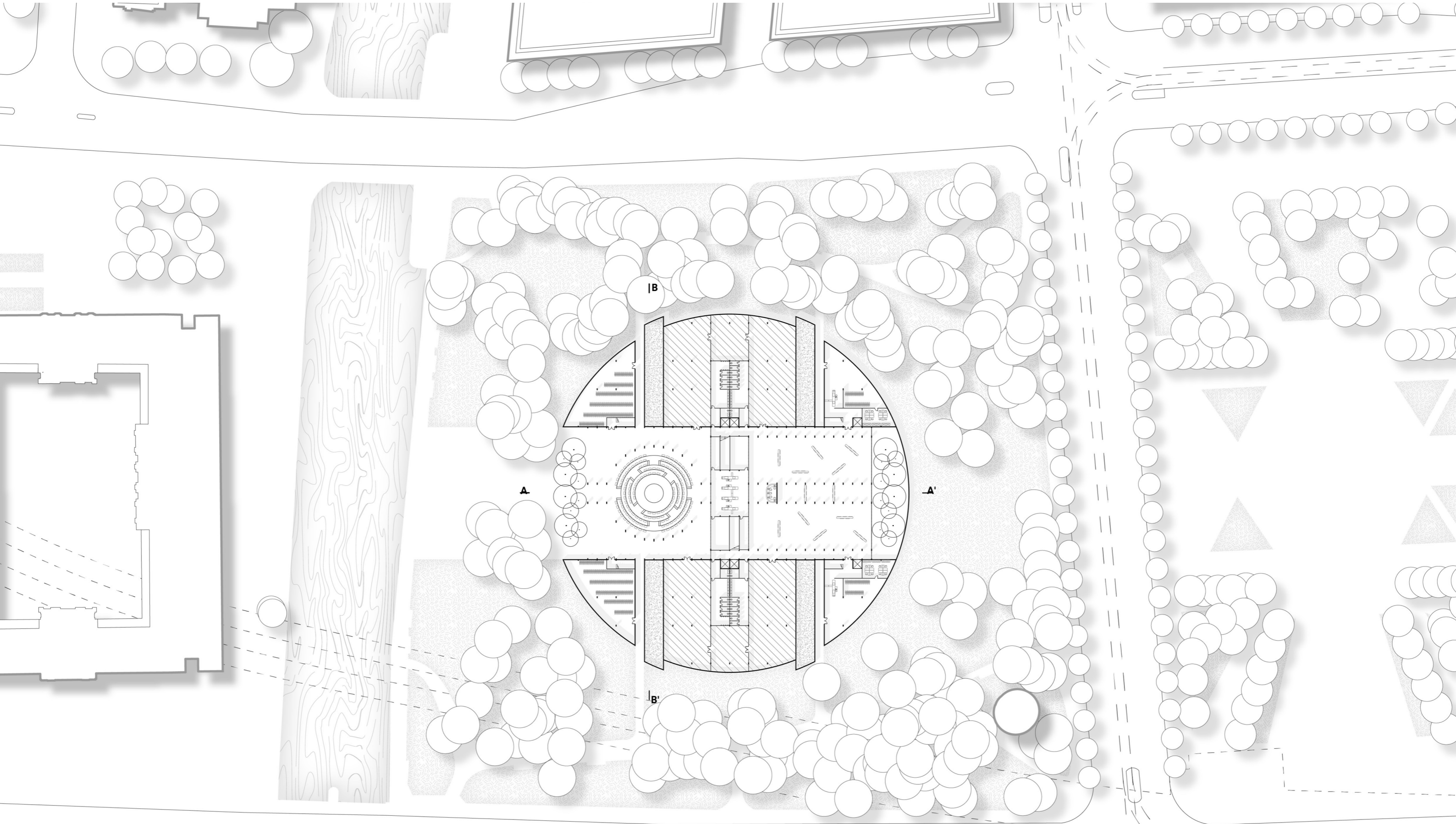
Floor plan - Group site plan
Urban level

0 400m 800m 1600m
Detail scale 1:10.000



Floor plan - Site plan
Rooftop level

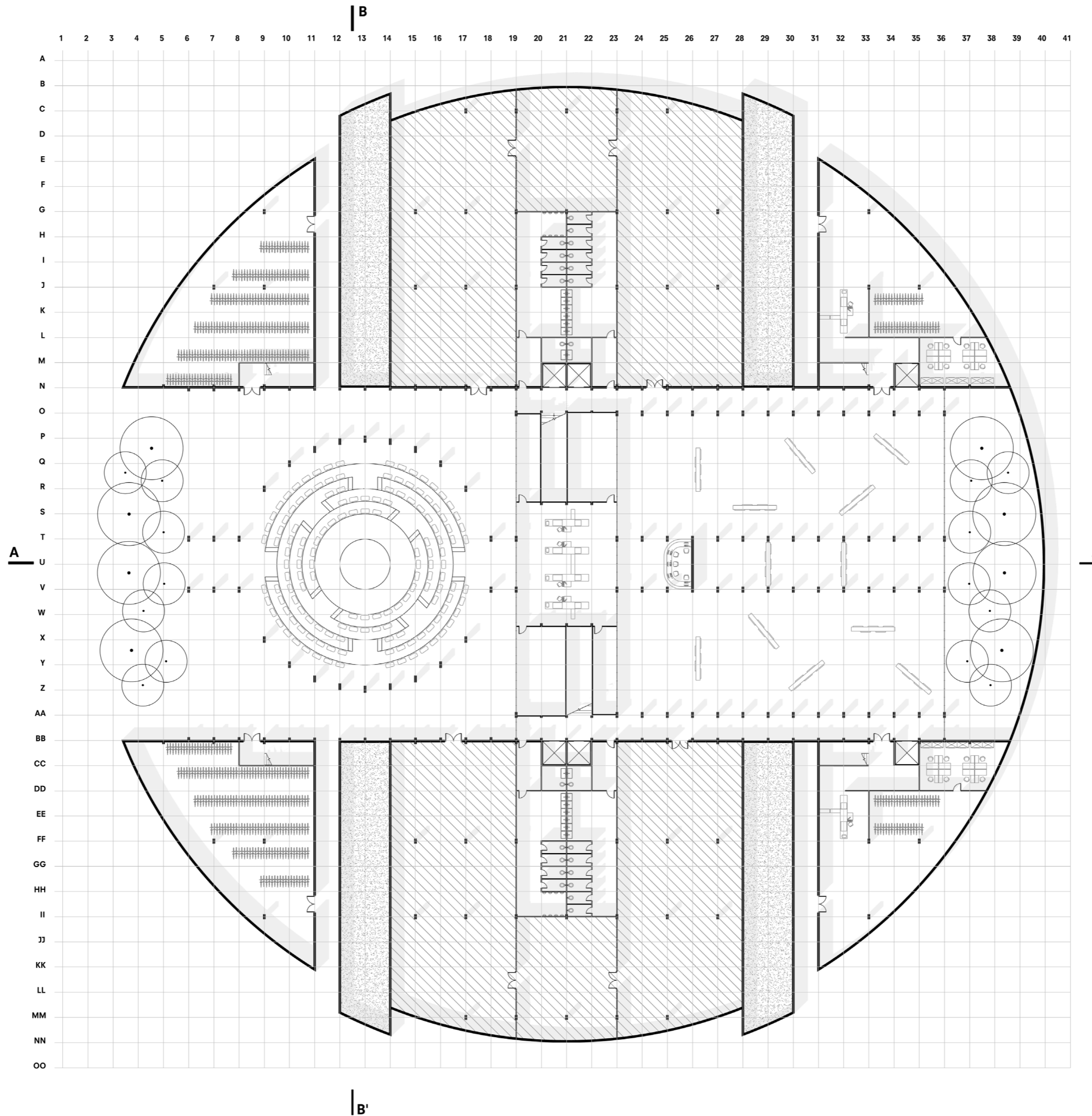




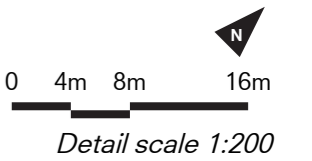
Floor plan - Urban implementation
+0.00m

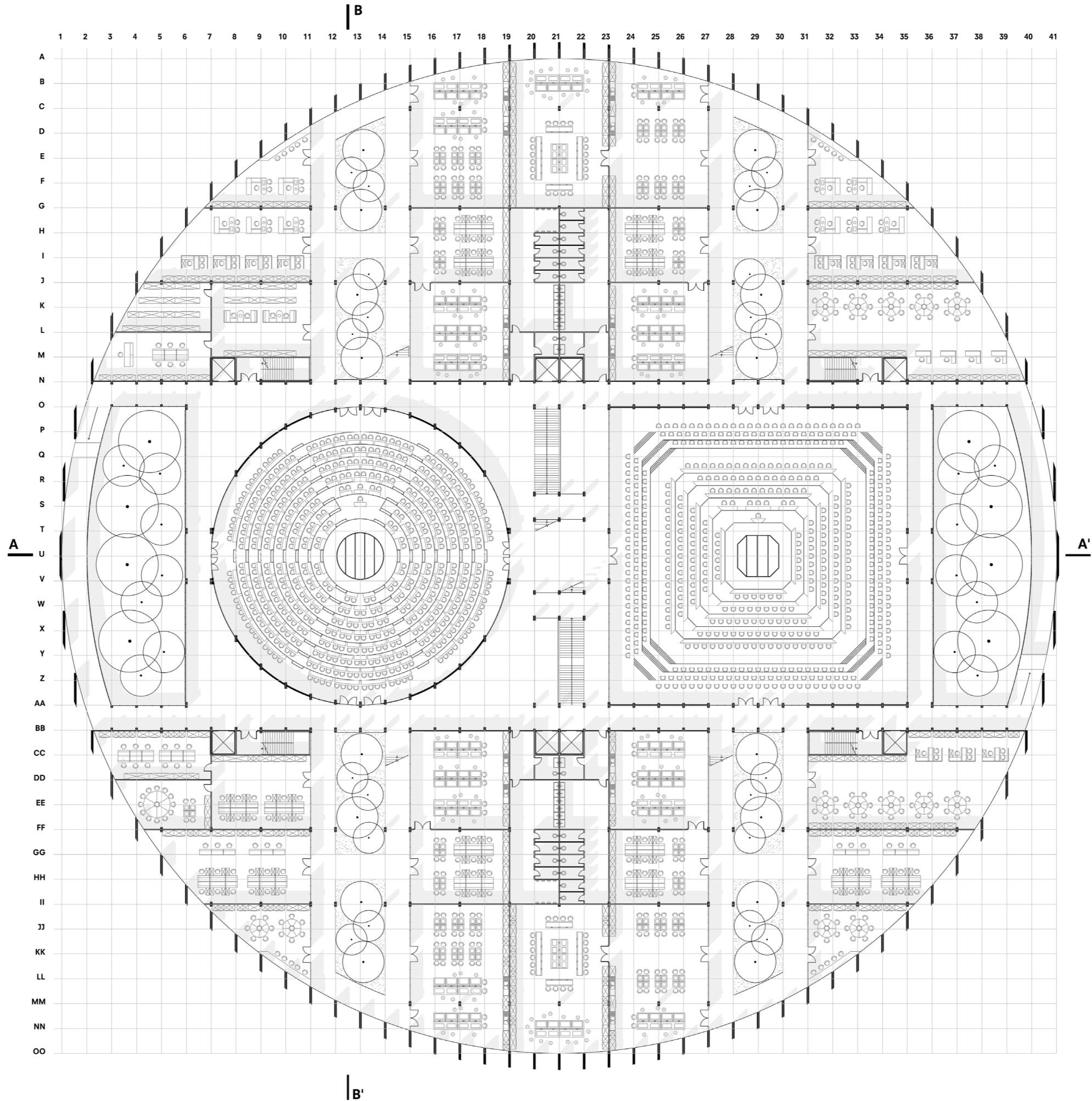
0 15m 30m 60m

Detail scale 1:500

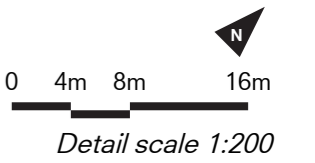


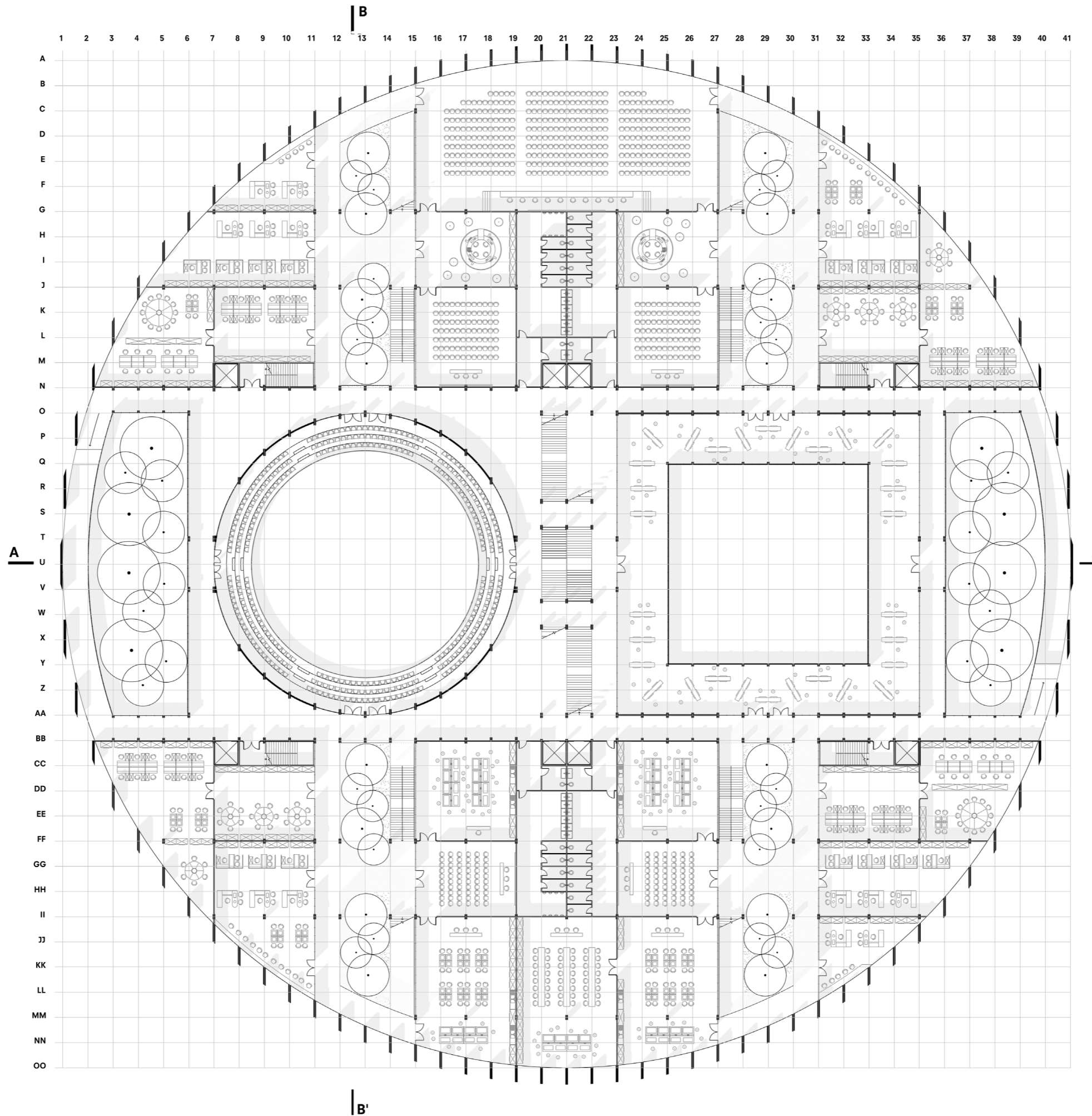
Floor plan - Level 0
+0.00m



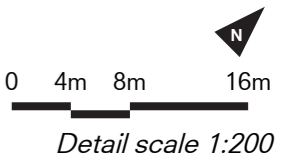


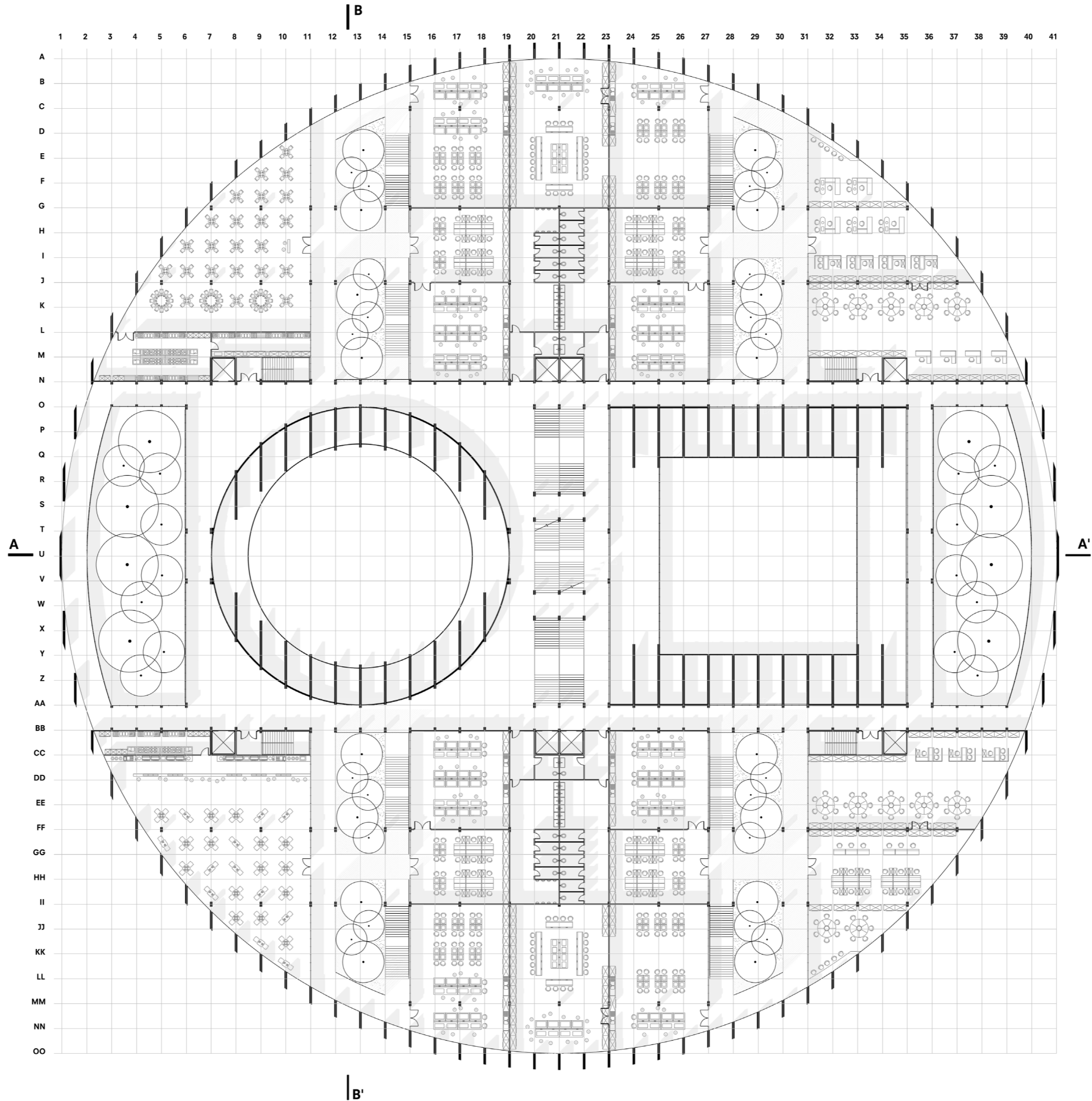
Floor plan - Level 1
+6.50m



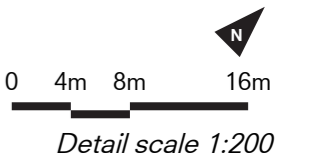


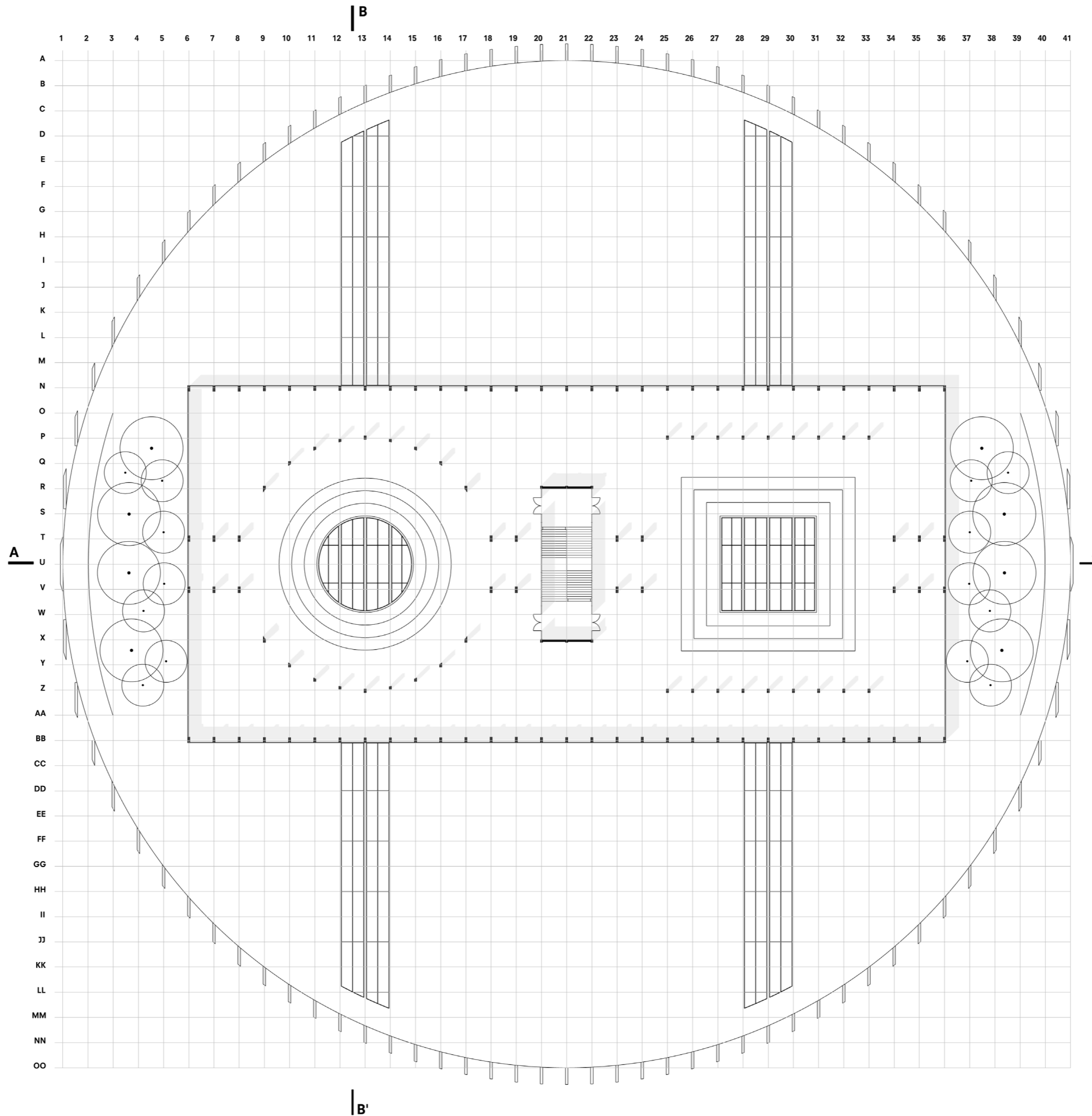
Floor plan - Level 2
+11.50m



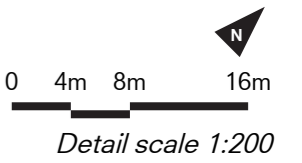


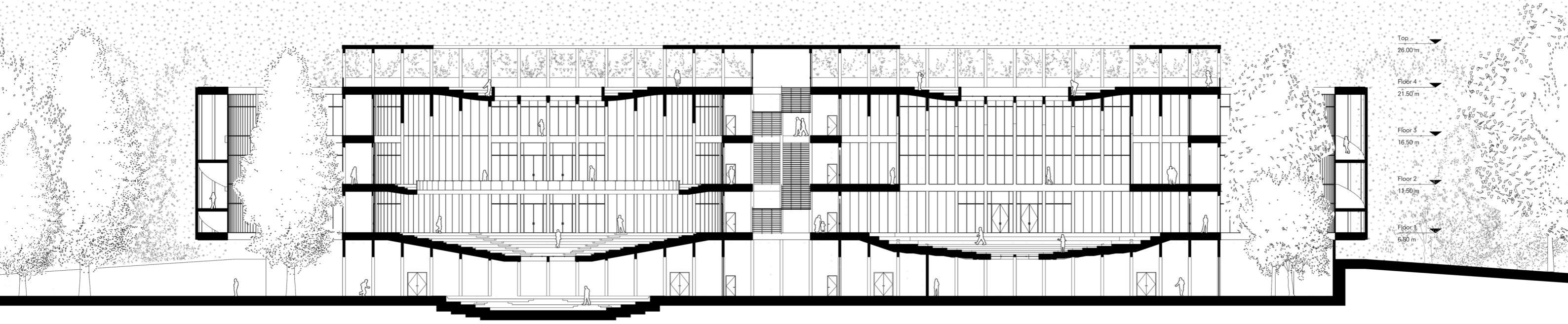
Floor plan - Level 3
+16.50m





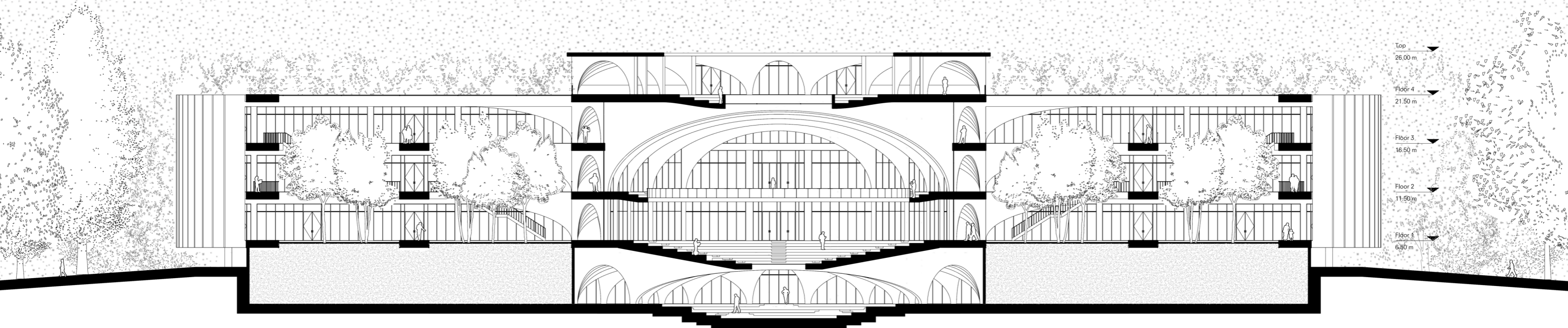
Floor plan - Level 4
+21.50m





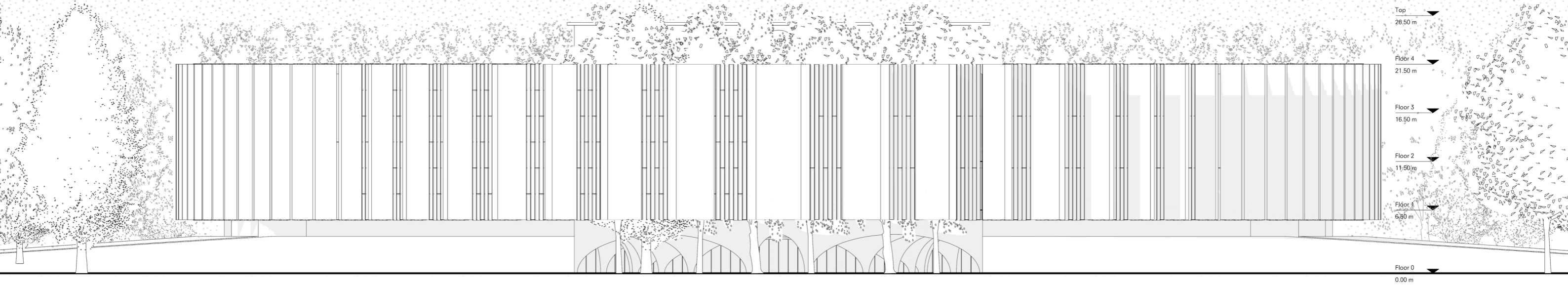
Section A-A'
Longitudinal section

0 4m 8m 16m
Detail scale 1:200



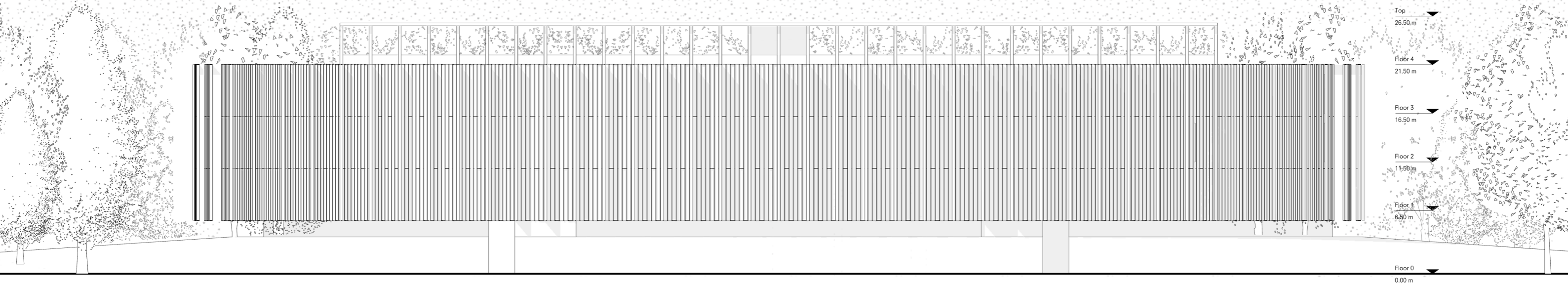
Section B-B'
Transversal section

0 4m 8m 16m
Detail scale 1:200



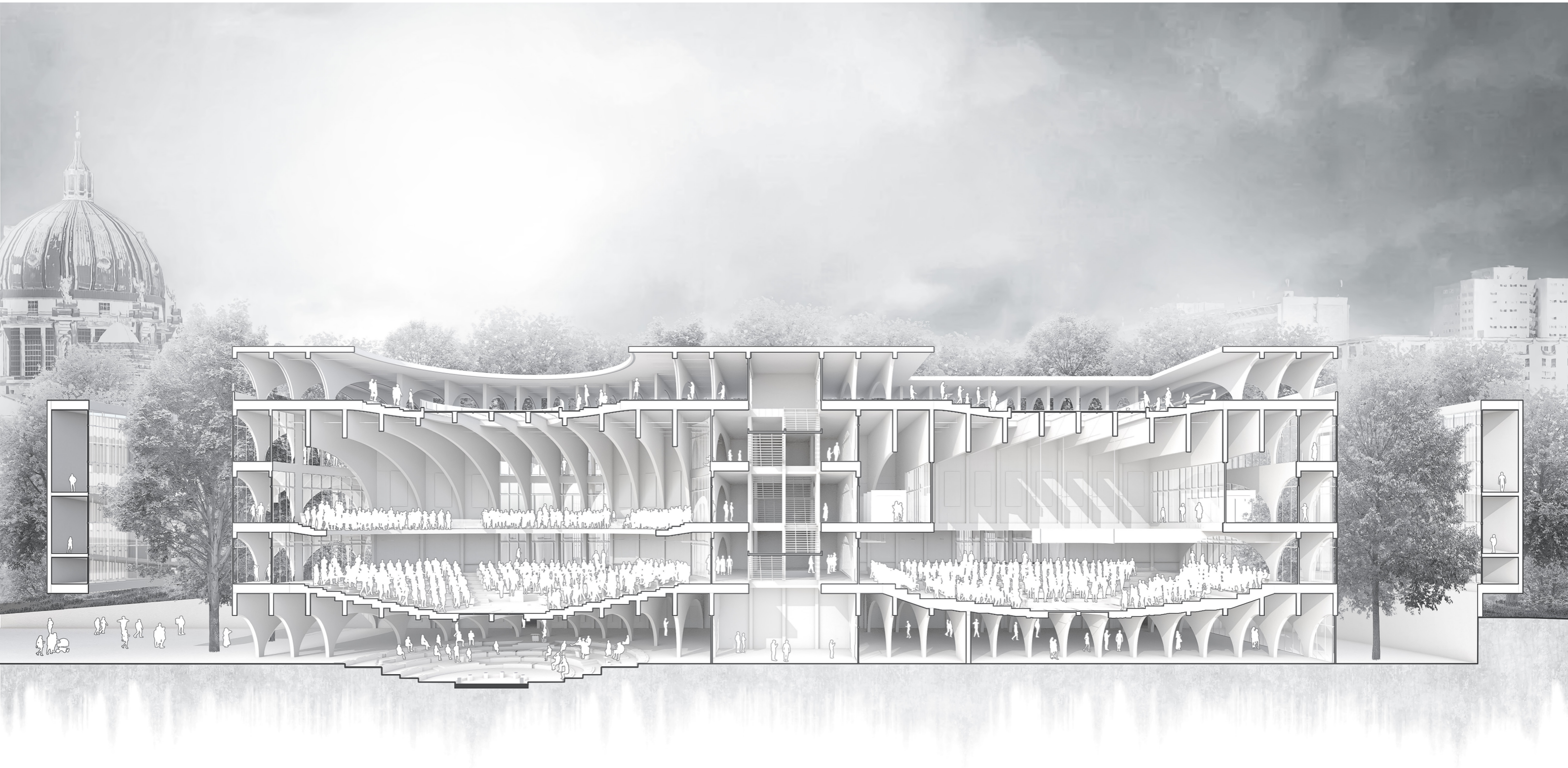
South-West elevation
River side





South-East elevation
Rathausstraße side





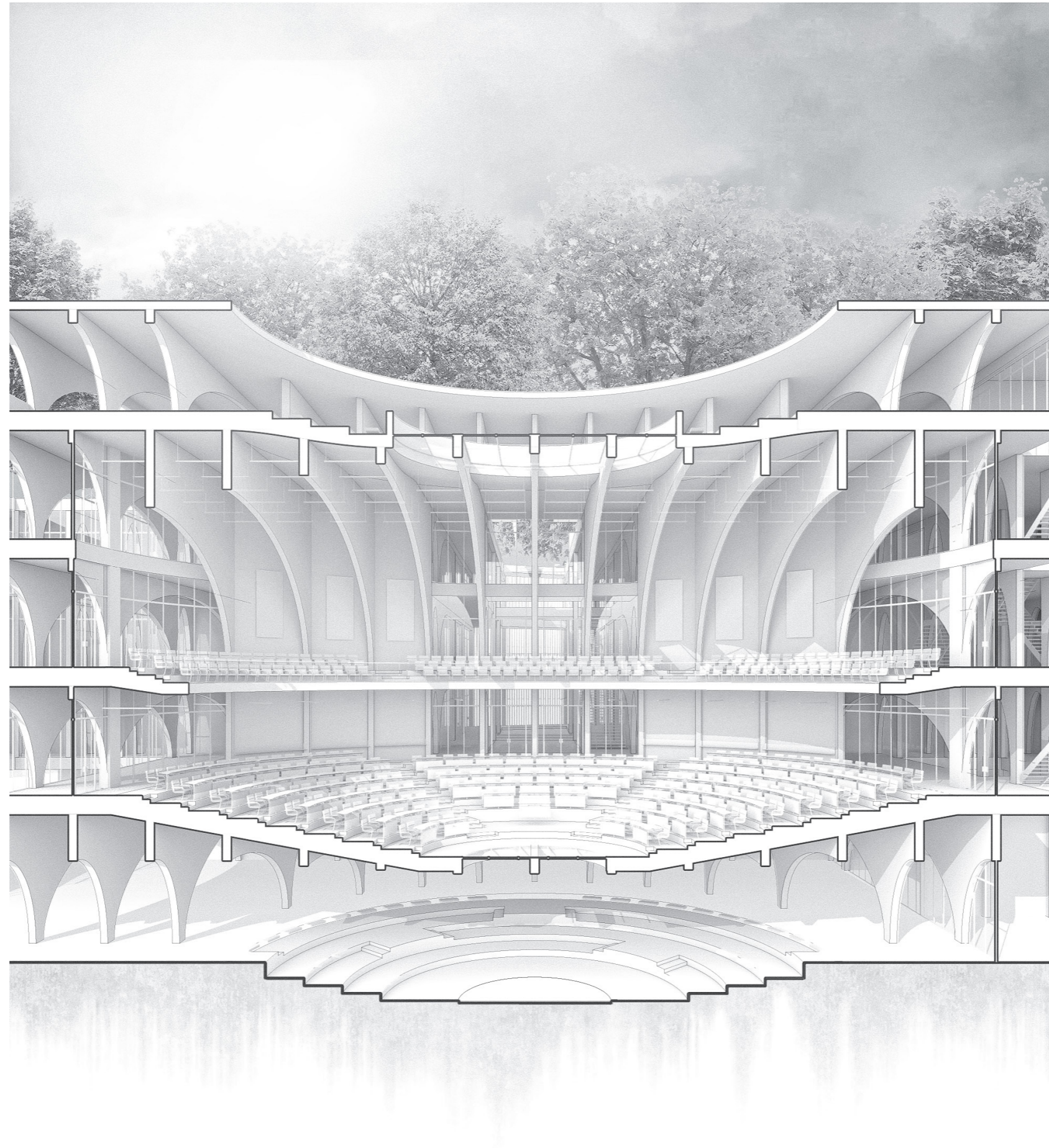
Key drawing - Perspective section A-A'
Greyscale

Detail scale 1:100



Key drawing - Perspective section A-A'
Rendered

Detail scale 1:100

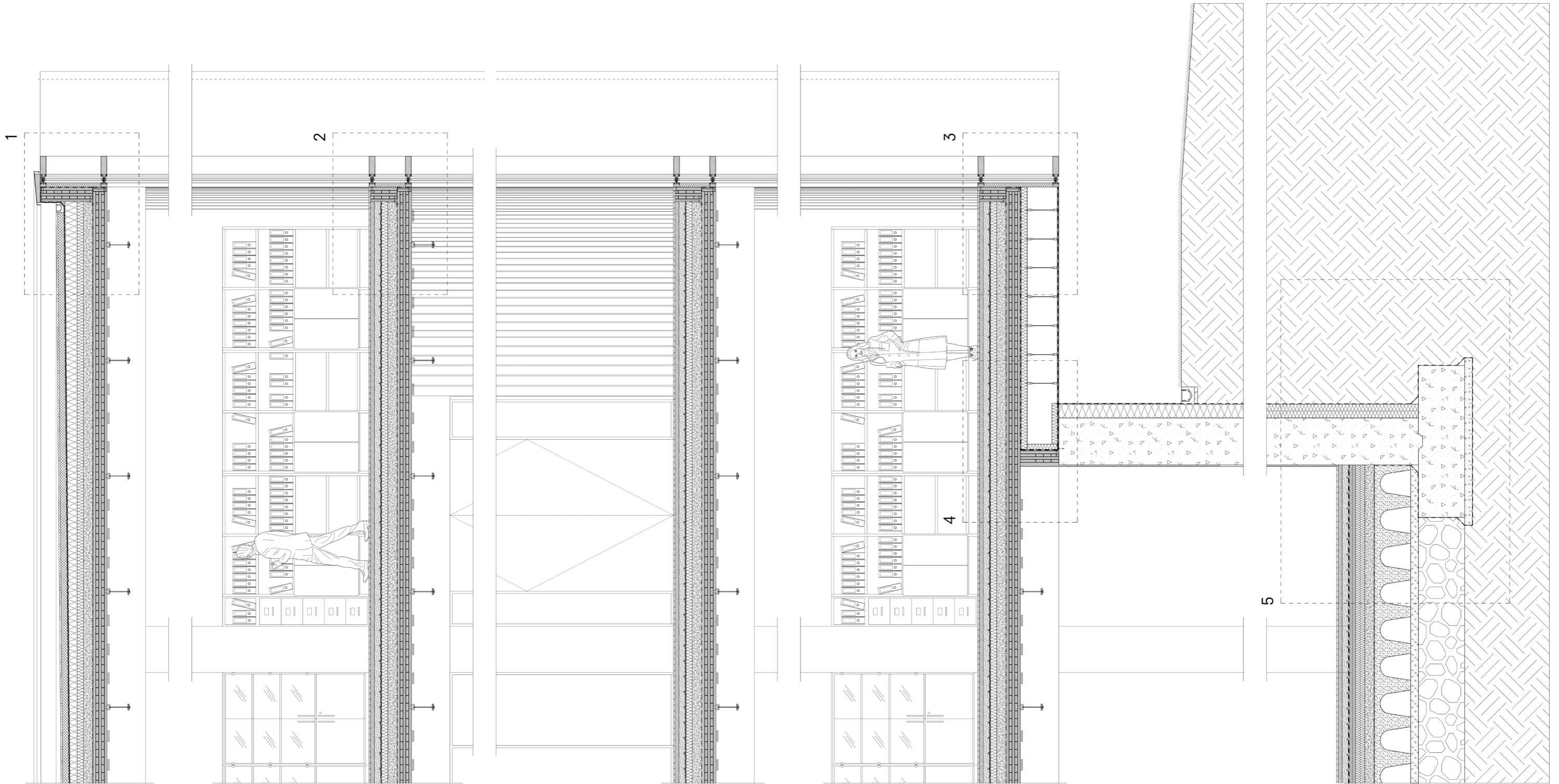


Interior fragment - perspective section Plenary Hall
Greyscale

Detail scale 1:50



Interior fragment - perspective section Plenary Hall
Rendered



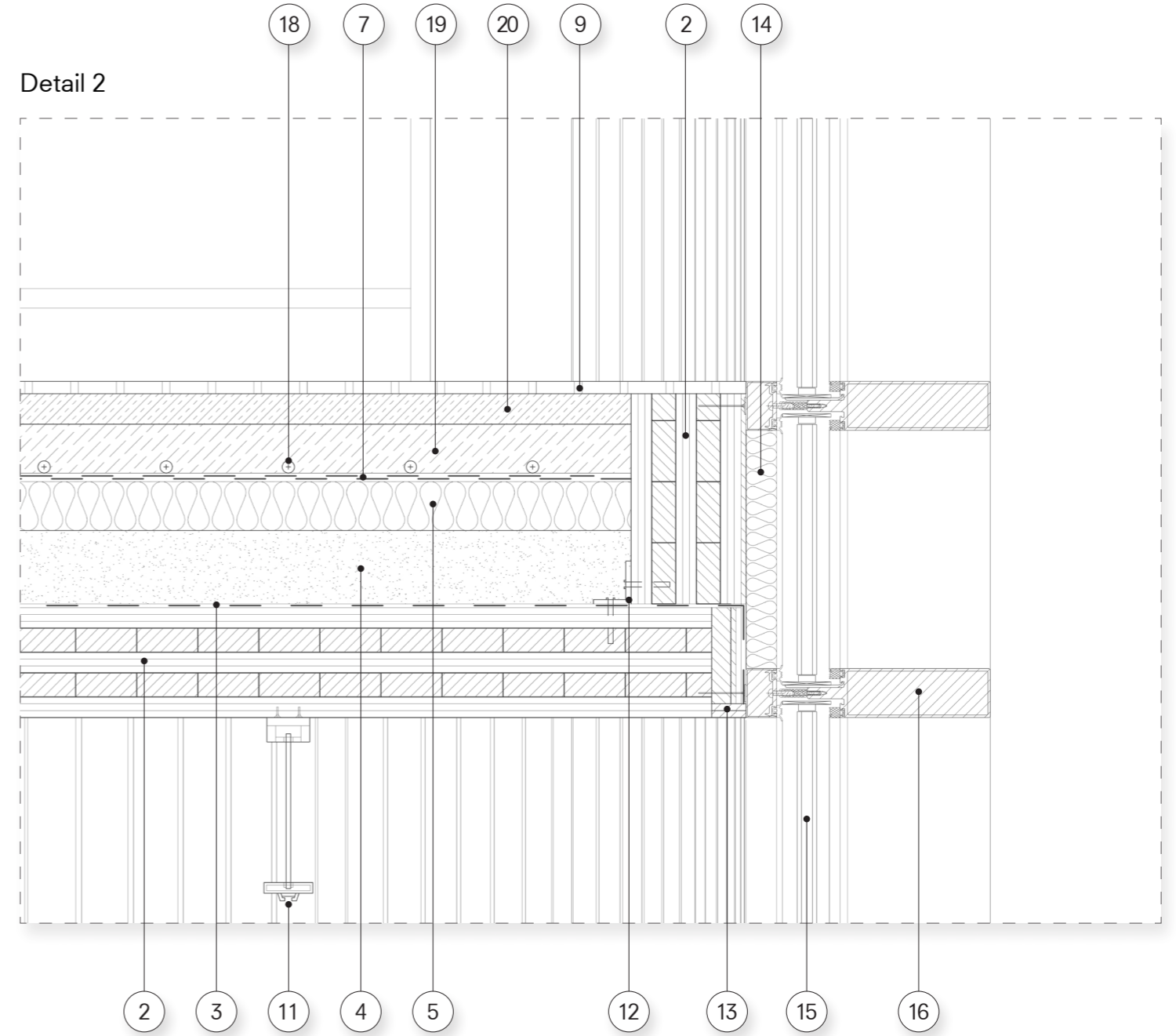
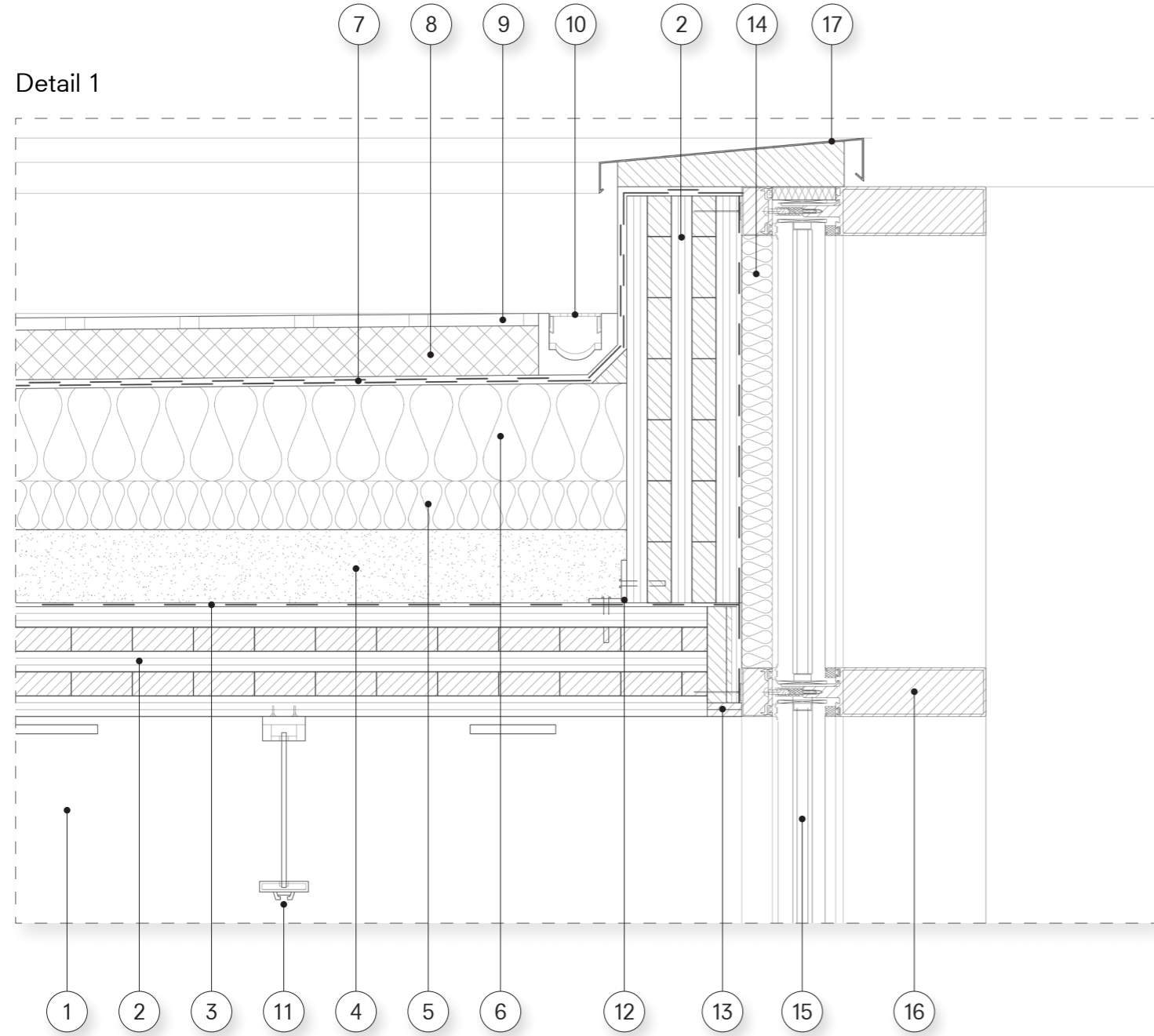
Envelope fragment
Technological section

0 40cm 80cm 160cm
Detail scale 1:20



Envelope fragment
Elevation

Detail scale 1:20

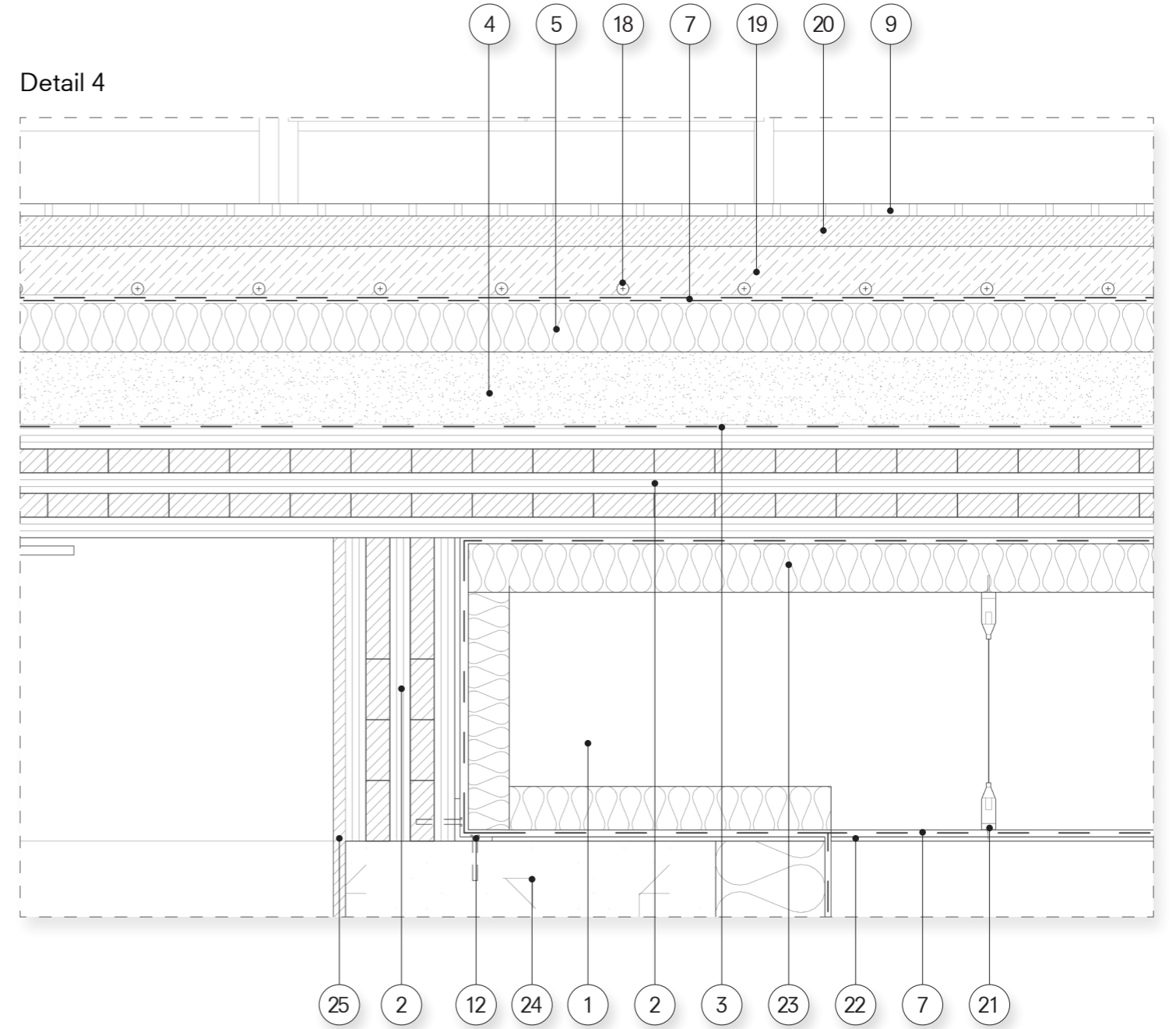
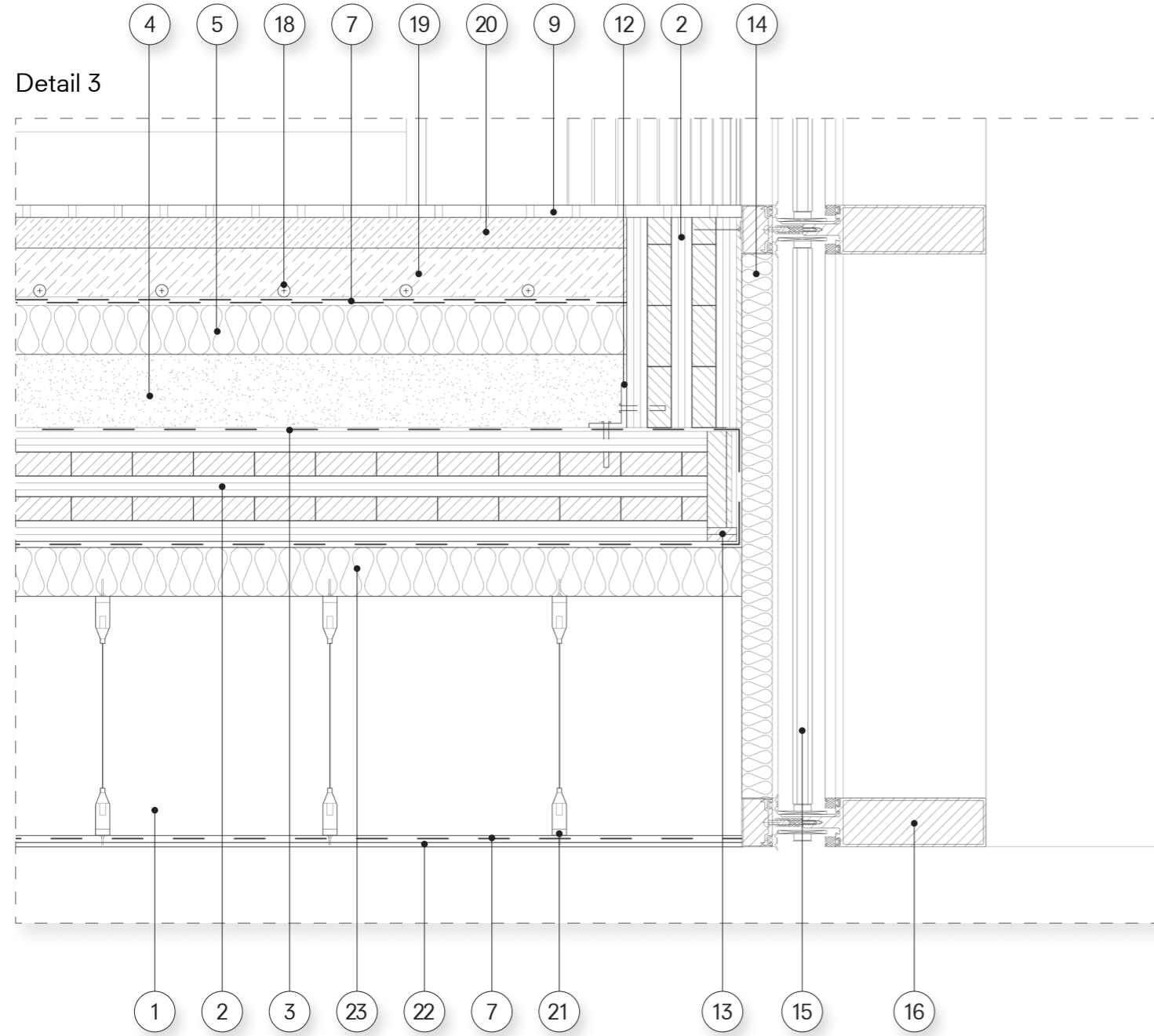


- ① Primary wooden beam 300mmx600mm
- ② Cross laminated timber 180mm
- ③ Trickle protection
- ④ Latex-bonded chipping infill 120mm
- ⑤ Mineral fibre footfall sound insulation 80mm

- ⑥ Mineral fibre insulation 160mm (in gradient)
- ⑦ Vapor barrier (separating layer)
- ⑧ Drainage element 80mm
- ⑨ Floor covering 20mm
- ⑩ Gutter

- ⑪ Lighting fixture
- ⑫ Angular metal bracket
- ⑬ Wooden edge finiture
- ⑭ Mineral fibre thermic insulation 50mm
- ⑮ Doubl glass panel 32mm

- ⑯ Wooden mullion 80mmx400mm
- ⑰ Drip edge
- ⑱ Embedded tubes radiant floor
- ⑲ Cement screed 80mm
- ⑳ Bedding mortar 50mm

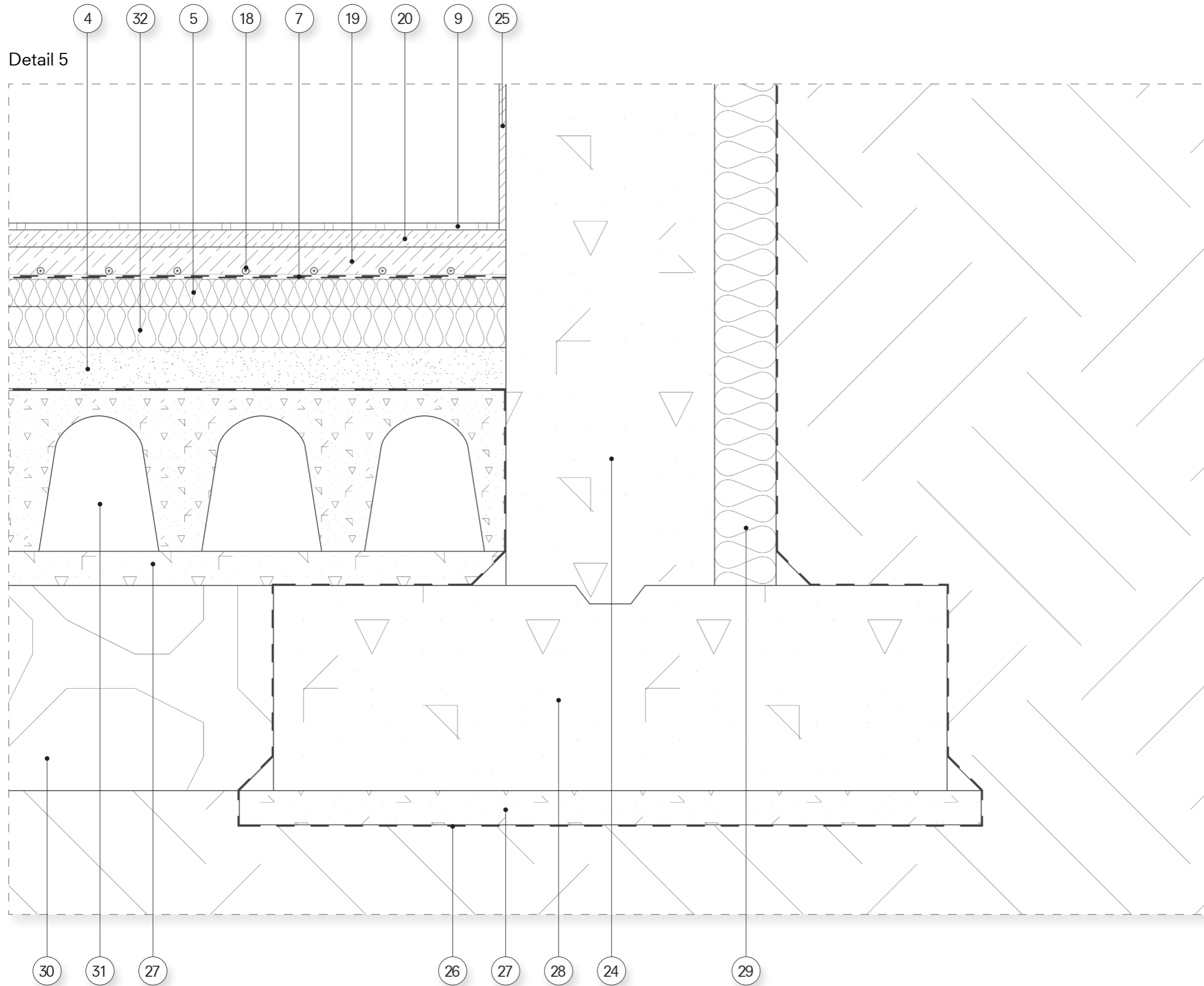


- ① Primary wooden beam 300mmx600mm
- ② Cross laminated timber 180mm
- ③ Trickle protection
- ④ Latex-bonded chipping infill 120mm
- ⑤ Mineral fibre footfall sound insulation 80mm

- ⑦ Vapor barrier (separating layer)
- ⑨ Floor covering 20mm
- ⑫ Angular metal bracket
- ⑬ Wooden edge finiture
- ⑭ Mineral fibre thermic insulation 50mm

- ⑮ Doubl glass panel 32mm
- ⑯ Wooden mullion 80mmx400mm
- ⑰ Embedded tubes radiant floor
- ⑱ Cement screed 80mm
- ⑳ Bedding mortar 50mm

- ㉑ Suspended ceiling aluminum hangers
- ㉒ Plywood board 7mm
- ㉓ Mineral fibre thermic insulation 80mm
- ㉔ Concrete wall 60mm
- ㉕ Plywood board 20mm



- ④ Latex-bonded chipping infill 120mm
- ⑤ Mineral fibre footfall sound insulation 80mm
- ⑦ Vapor barrier (separating layer)
- ⑨ Floor covering 20mm
- ⑱ Embedded tubes radiant floor
- ⑲ Cement screed 80mm
- ⑳ Bedding mortar 50mm
- ㉔ Concrete wall 60mm
- ㉕ Plywood board 20mm
- ㉖ Waterproof layer
- ㉗ Cement screed 100mm
- ㉘ Concrete foundation 600mm
- ㉙ Mineral fibre thermal insulation 180mm
- ㉚ Gravel substrate 400mm
- ㉛ Collaborating jet in ventilated crawl space
- ㉜ Mineral fibre thermal insulation 120mm

Envelope fragment
Technological detail

0 10cm 20cm 40cm

Detail scale 1:5

