

BIM Legal

Proposal for defining legal spaces for apartment rights in the Dutch cadastre using the IFC data model

P5 – Public presentation & final assessment

Roeland Willem Erik Meulmeester | 4175417 | r.w.e.meulmeester@student.tudelft.nl

First Mentor:	Prof. dr. ir. P.J.M. Van Oosterom
Second Mentor:	Prof. mr. dr. H.D. Ploeger
Kadaster Contact:	E. Hagemans
2nd Kadaster Contact:	G. Dabroek
Co-reader:	Ir. Juan Francisco Azcarate-Aguerre
Delegate of the Board of examiners:	L.A.M. Willekens



Presentation Outline

- Introduction
- Motivation
- Methodology
- Developed proof of concept
- Case study
- Conclusions

Introduction

Motivation

Methodology

Proof of Concept

Case Study

Conclusions

Introduction

- BIM Legal: Proposal for defining legal spaces for apartment rights in the Dutch cadastre using the IFC Data model

Introduction

Motivation

Methodology

Proof of Concept

Case Study

Conclusions

Introduction

- **BIM Legal: Proposal for defining legal spaces for apartment rights in the Dutch cadastre using the IFC Data model**

Introduction

Motivation

Methodology

Proof of Concept

Case Study

Conclusions

Introduction

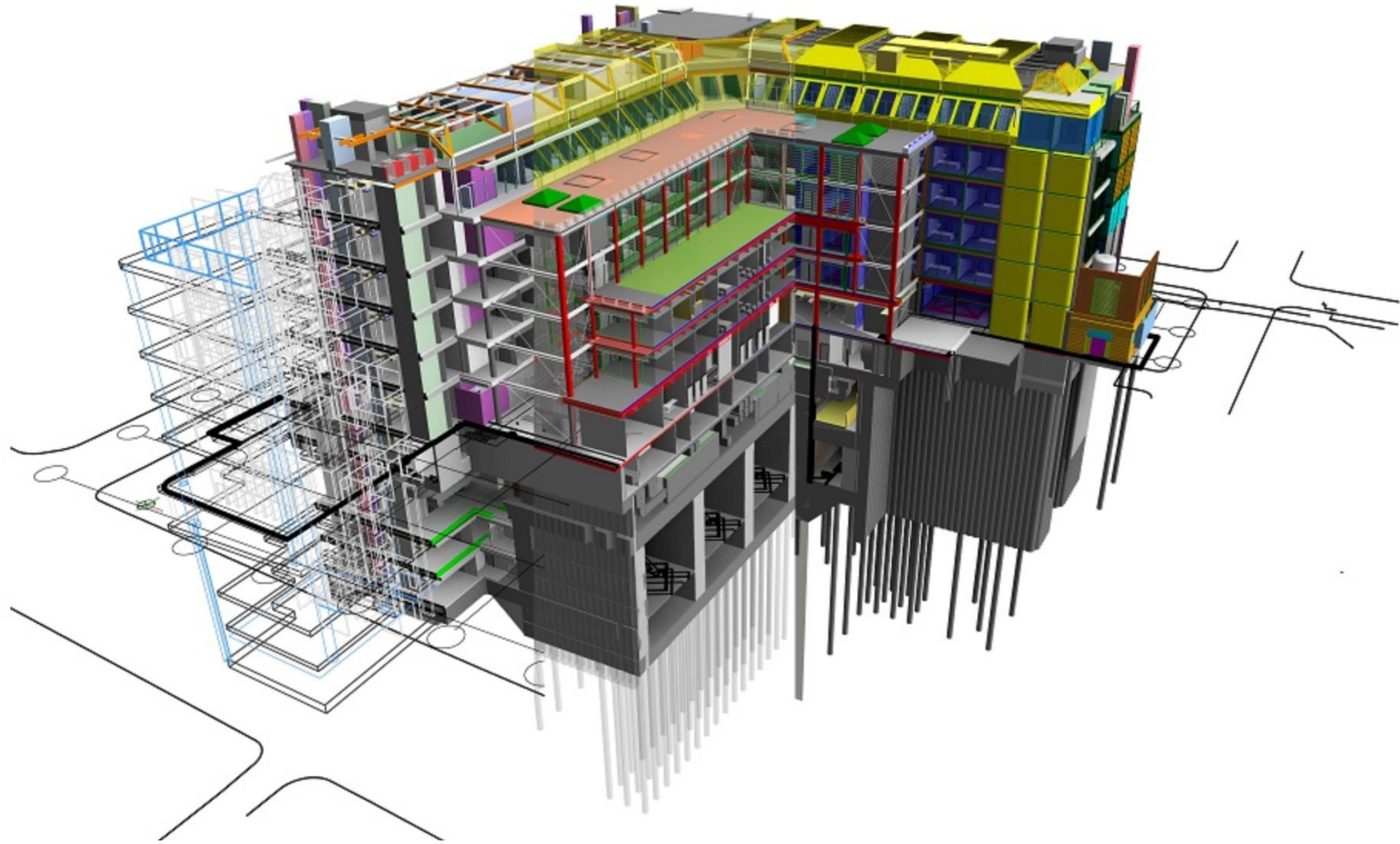
Motivation

Methodology

Proof of Concept

Case Study

Conclusions



IFC Data Model

- Open data format for BIM
- Most used data model in AEC sector
- BIM mandatory for buildings > €10M
- Rijksvastgoeddienst, BIM Loket
- No legal space in IFC

Introduction

Motivation

Methodology

Proof of Concept

Case Study

Conclusions

Introduction

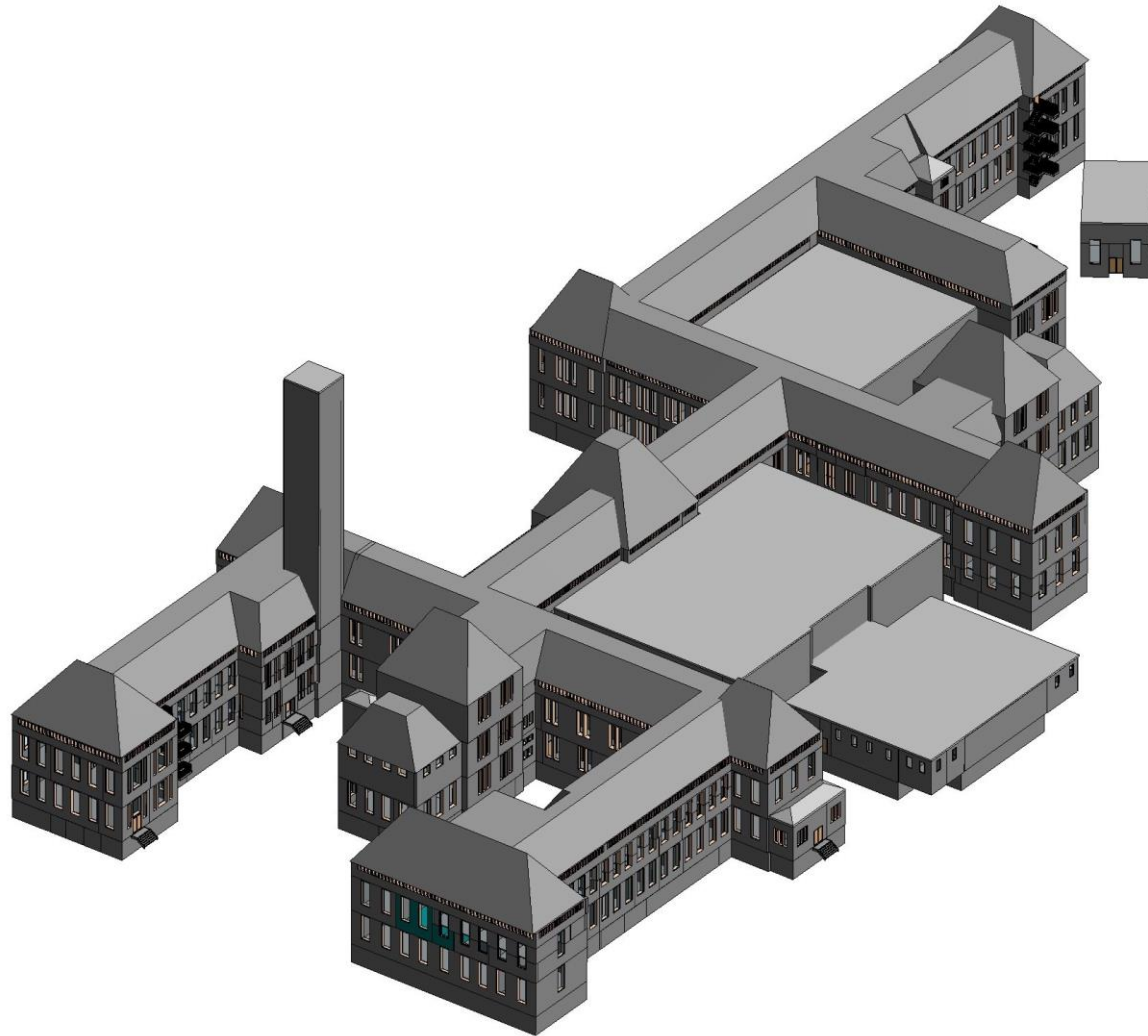
Motivation

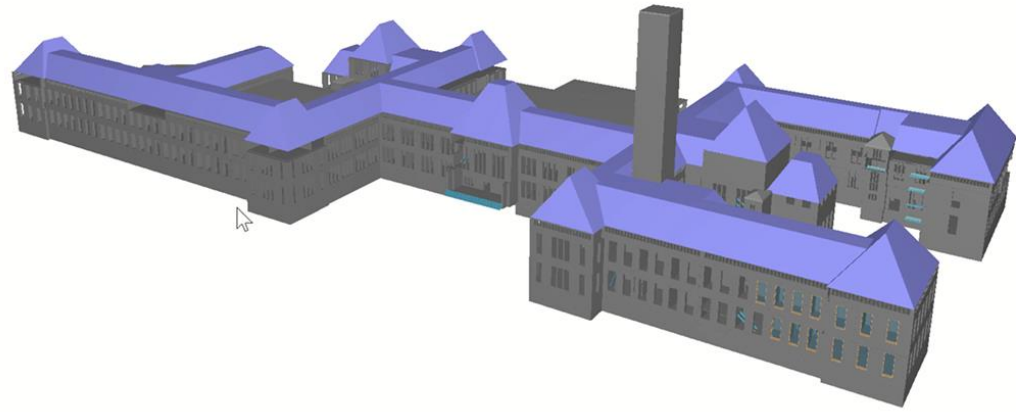
Methodology

Proof of Concept

Case Study

Conclusions





Introduction

- Proposal for defining legal spaces for **apartment rights** in the **Dutch cadastre** using the IFC Data model

kadaster



Apartment Rights

- Registered ownership to individual apartment unit
- Registered with a notarial deed
 - Internal Arrangements + 2D Floor plan

Introduction

Motivation

Methodology

Proof of Concept

Case Study

Conclusions

Introduction

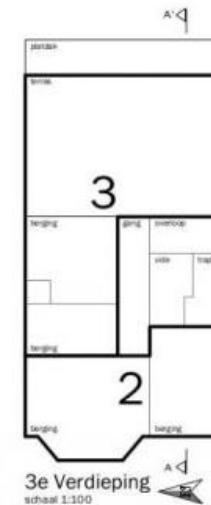
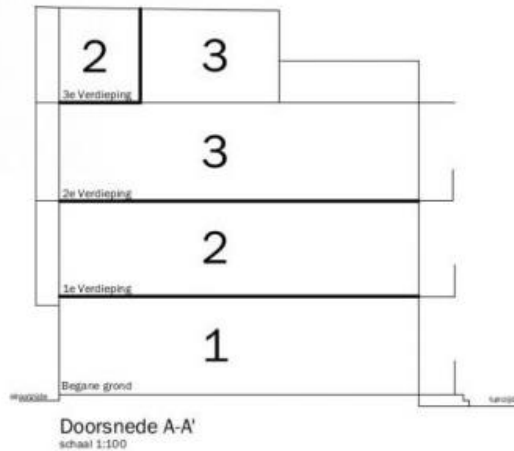
Motivation

Methodology

Proof of Concept

Case Study

Conclusions



Situatietekening
schaal 1:1000

Voorgenomen splitsing in 3 appartementsrechten kadastraal bekend:

GEMEENTE Amsterdam SECTIE X NUMMER #####

Plaatselijk bekend als; Xxxxxxxxxx ###

De datum; De Notaris;

Complex buildings

Introduction

Motivation

Methodology

Proof of Concept

Case Study

Conclusions

- Hard to depict ownership situation in 2D
- Time consuming, thus expensive (avg €105/h)
- IFC BIM already contains some data about spaces



Figure 3 (Atazadeh et al., 2017)

2D Parcel map

Introduction

Motivation

Methodology

Proof of Concept

Case Study

Conclusions

pdok

Labs Actueel Over PDK Voor aanbieders Contact

Datasets PDK Viewer Inspiratie Community Support NGR

Zoek op locatie

Selecteer een dataset(s)

ACTIEVE DATASET(S):
BRT Achtergrondkaart
Kadastrale Kaart

2 actieve dataset(s)

Objectinformatie:

Railway Station Delft

Introduction

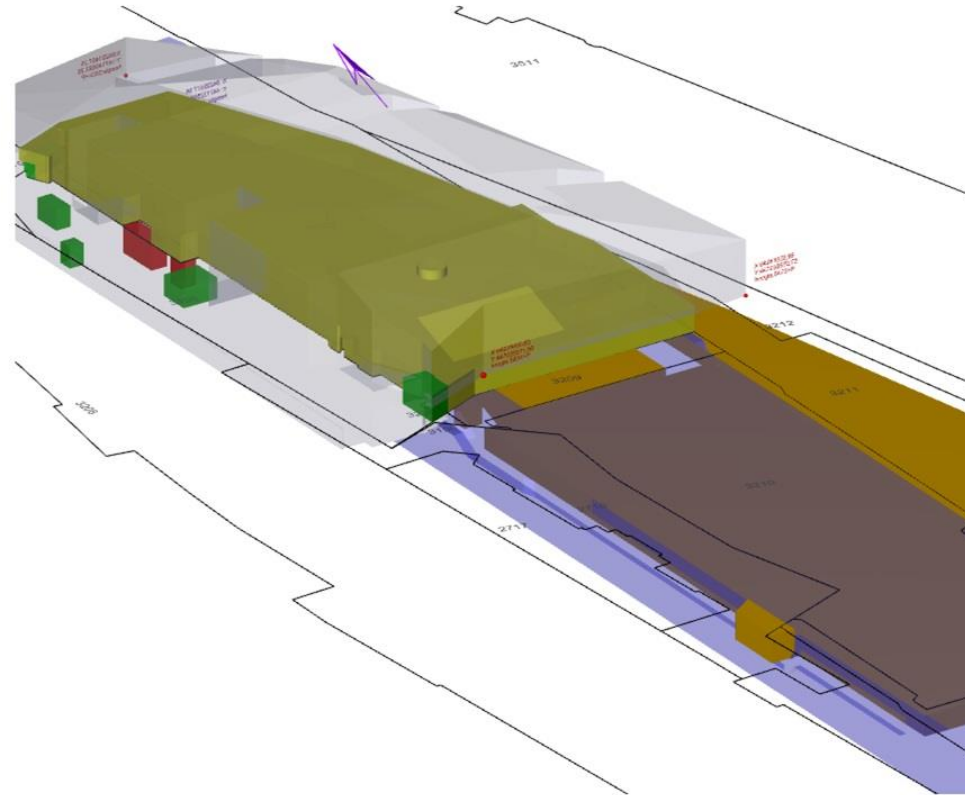
Motivation

Methodology

Proof of Concept

Case Study

Conclusions



Introduction

Motivation

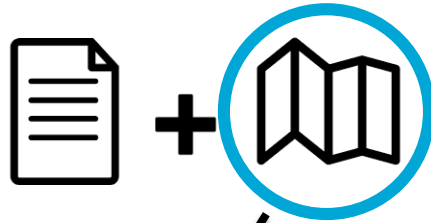
Methodology

Proof of Concept

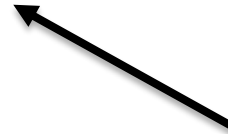
Case Study

Conclusions

Notarial Deed



IFC BIM



Proof of concept

Introduction

Motivation

Methodology

Proof of Concept

Case Study

Conclusions

1. Enriched BIM Legal creation
2. Automatic extraction of 3D legal space
3. Validation
4. Storage
5. Visualisation
6. (sub-) Splitting

Research Question

How can the IFC Data Model possibly be extended to extract legal space for apartment rights for registration in the Dutch cadastre?

Introduction

Motivation

Methodology

Proof of Concept

Case Study

Conclusions

Proof of concept

1. Enriched BIM Legal creation
2. Automatic extraction of 3D legal space
3. Validation
4. Storage
5. Visualisation
6. (sub-) Splitting

Introduction

Motivation

Methodology

Proof of Concept

Case Study

Conclusions

Proposed Solution

- User Defined Property Sets for IfcSpaces
- IfcSpace one out of 800 entities
- User Defined Property Set: custom set of attributes on entity

Introduction

Motivation

Methodology

Proof of Concept

Case Study

Conclusions

Example IFC BIM

Introduction

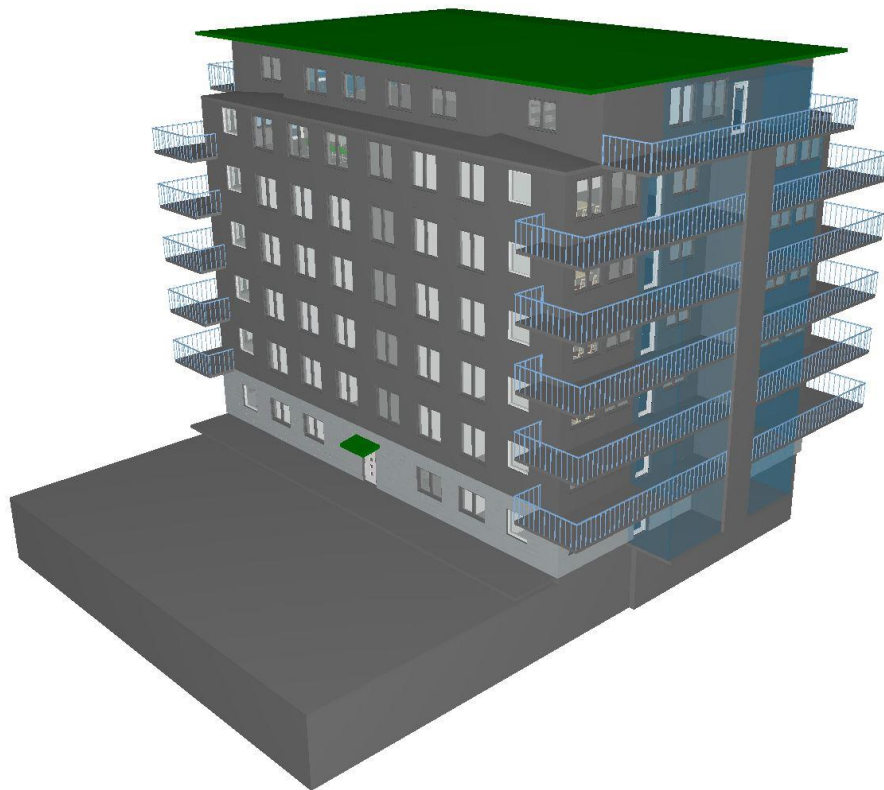
Motivation

Methodology

Proof of Concept

Case Study

Conclusions



Storey sliced out

Introduction

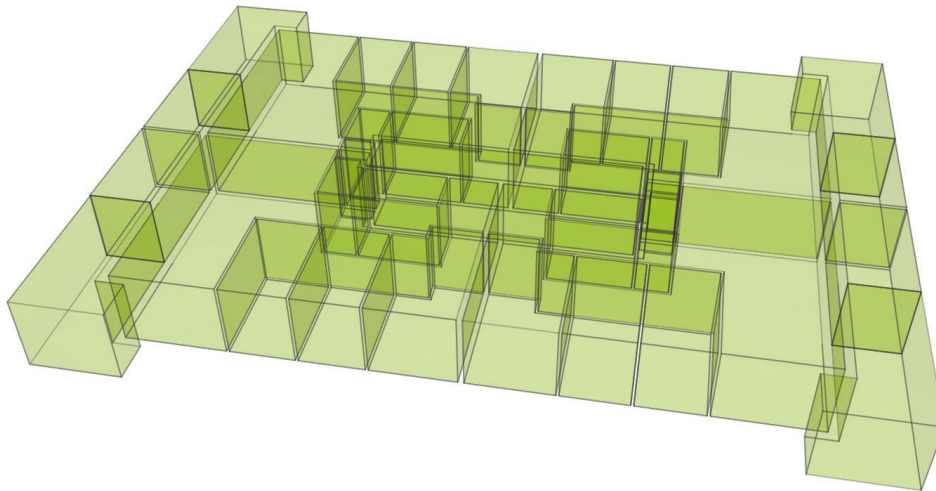
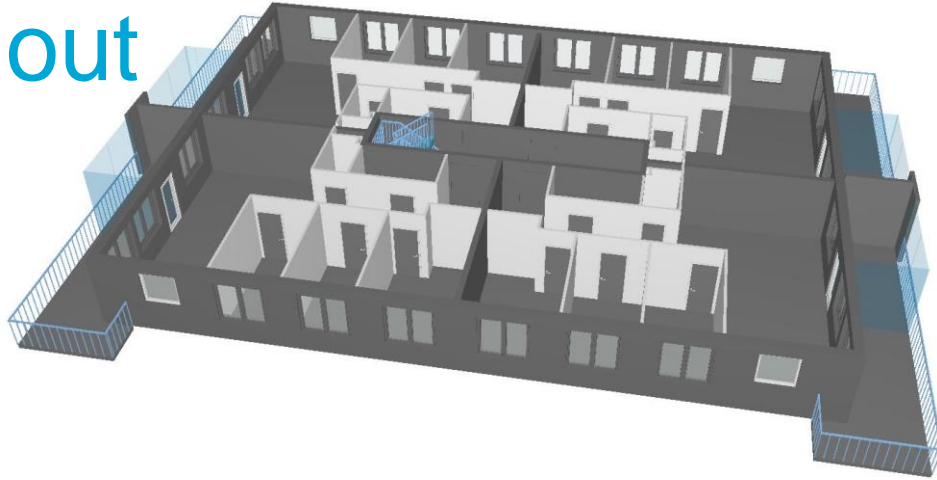
Motivation

Methodology

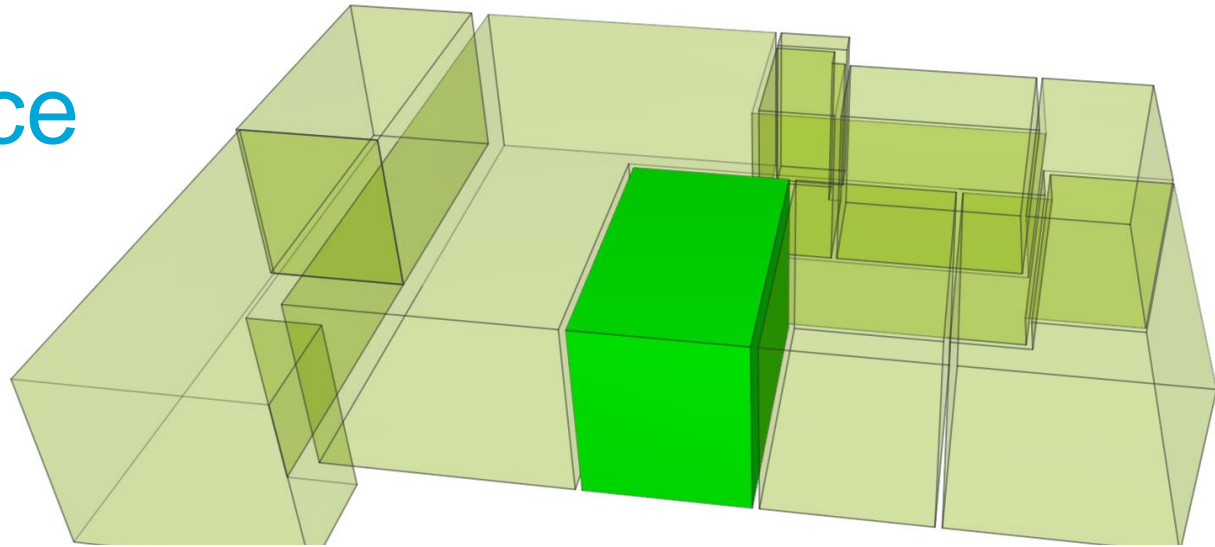
Proof of Concept

Case Study

Conclusions



IfcSpace



Introduction

Motivation

Methodology

Proof of Concept

Case Study

Conclusions

INFO

Space.4.8 : Room[133]

Identification	Location	Quantities	Profile	Relations	Space Boundaries	Space Boundary Areas	Classification
Hyperlinks	Pset_AirSideSystemInformation			Pset_CadastralInformation		Pset_ProductRequirements	Pset_SpaceCommon

Property	Value
complexnumber	8897 A
indexnumber	15
municipality	Delft
parcelnumber	8897
section	A
spacetype	Private

Introduction

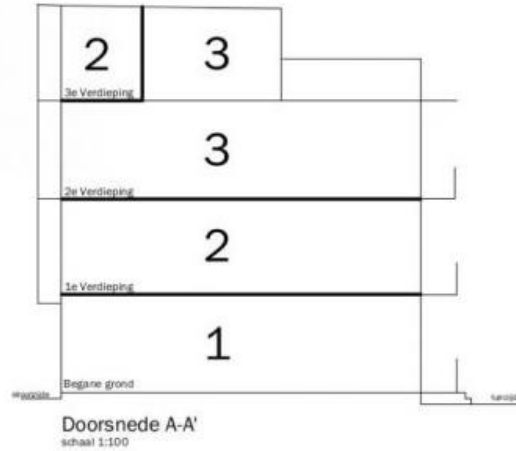
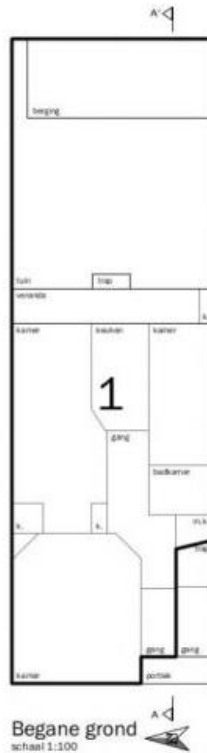
Motivation

Methodology

Proof of Concept

Case Study

Conclusions



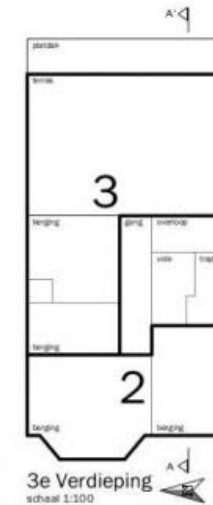
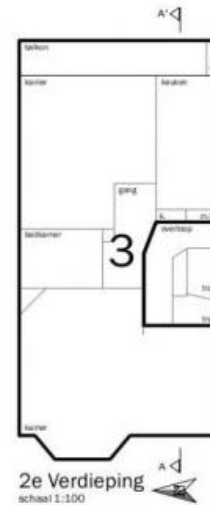
Situatietekening
schaal 1:1000

Voorgenomen splitsing in 3 appartementsrechten kadastraal bekend:

GEMEENTE Amsterdam SECTIE X NUMMER ####

Plaatselijk bekend als; Xxxxxxxxxx ###

De datum; De Notaris;



User Defined Property Set

- Based on 2D requirements for map in notarial deed
 - Dutch Civil Code
- Official IFC method
- Fits into current practices
 - RVB BIM Norm (Rijksvastgoeddienst)
 - BIM Loket IDM

Introduction

Motivation

Methodology

Proof of Concept

Case Study

Conclusions

Legal Space

- The function of the drawing
- Internal Arrangements: detailed written information
- Map for distinguishing private and shared space according to the “*functional arrangement*” (Article 5:106 (4) DCC)

Introduction

Motivation

Methodology

Proof of Concept

Case Study

Conclusions

Extensibility to other IFC Elements

Introduction

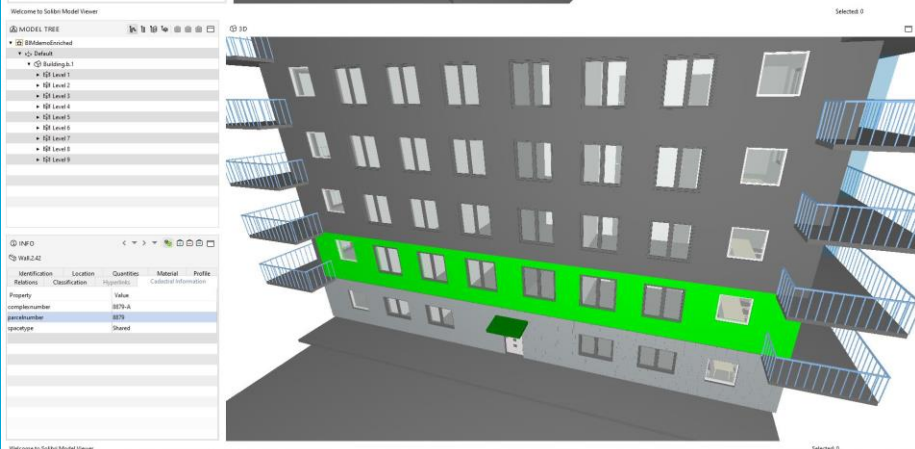
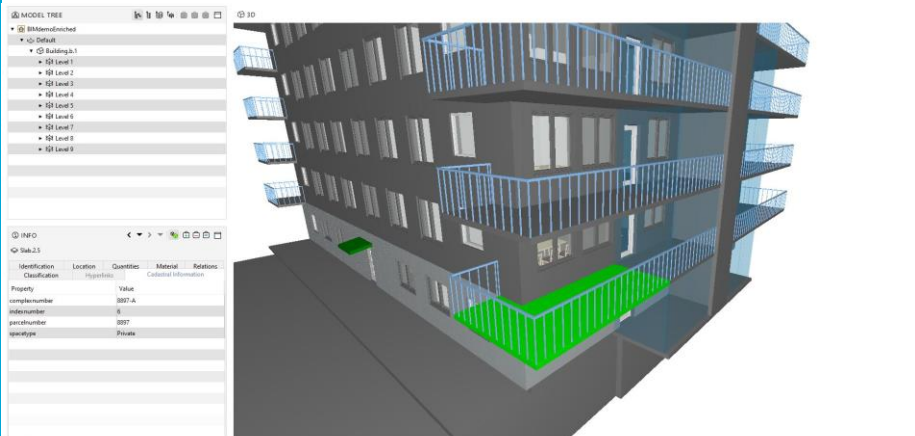
Motivation

Methodology

Proof of Concept

Case Study

Conclusions



Proof of concept

1. Enriched BIM Legal creation

2. Automatic extraction of 3D legal space

3. Validation

4. Storage

5. Visualisation

6. (sub-) Splitting

Introduction

Motivation

Methodology

Proof of Concept

Case Study

Conclusions

Automatic extraction of Legal Space

Introduction

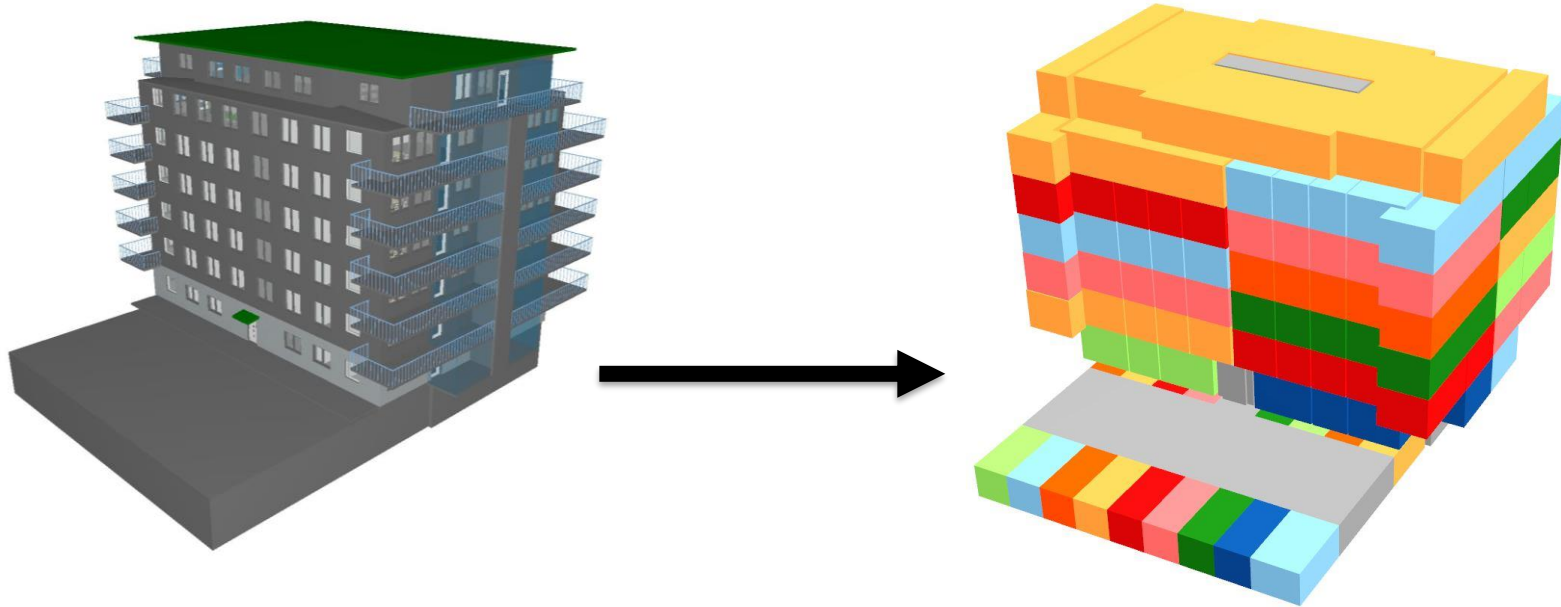
Motivation

Methodology

Proof of Concept

Case Study

Conclusions



Automatic extraction of Legal Space

Introduction

Motivation

Methodology

Proof of Concept

Case Study

Conclusions

- IFC BIM created according to the proposed solution
- FME workbench
- Legal Space in Database
- Can be visualised on cadastral parcel map

Introduction

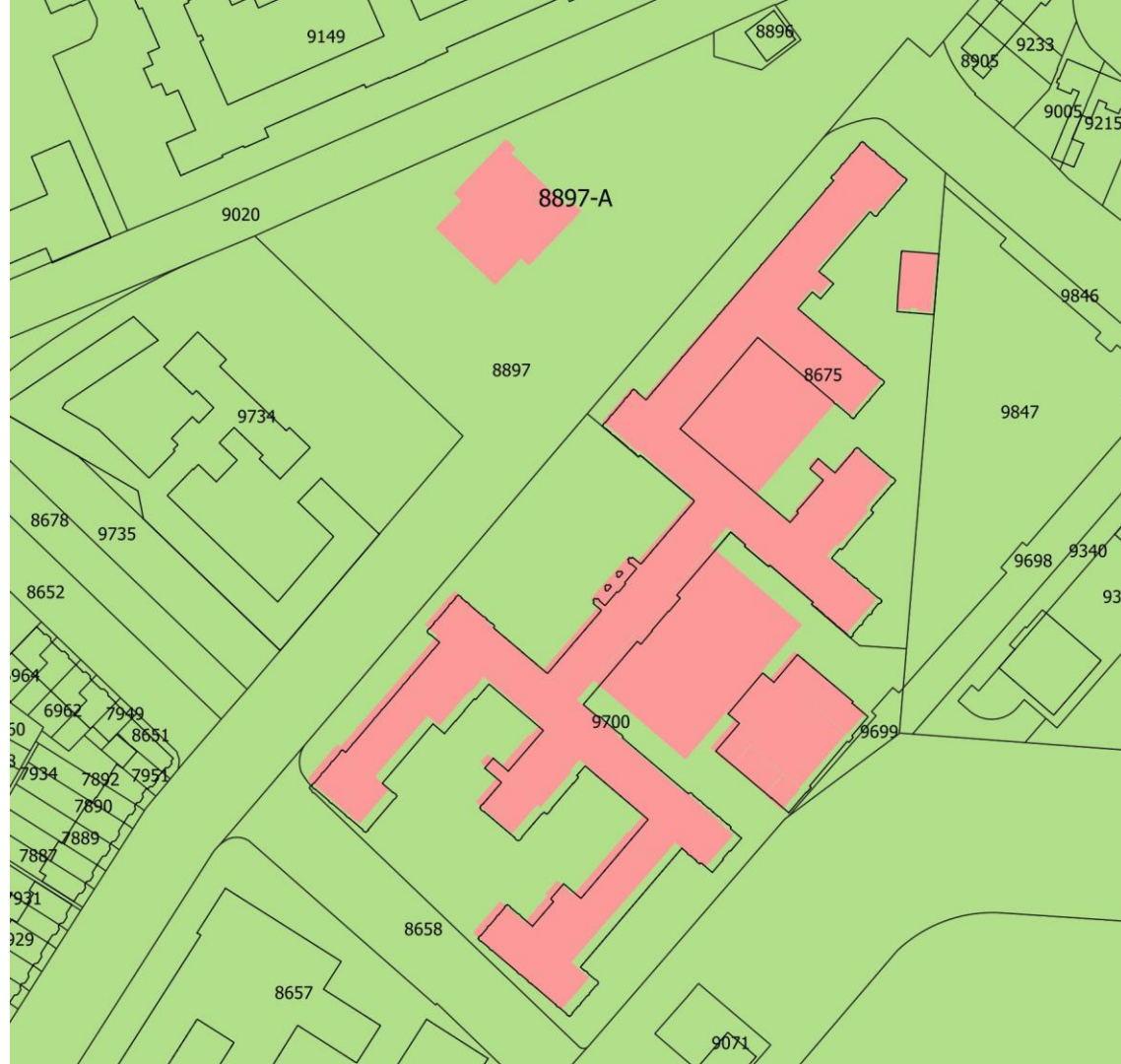
Motivation

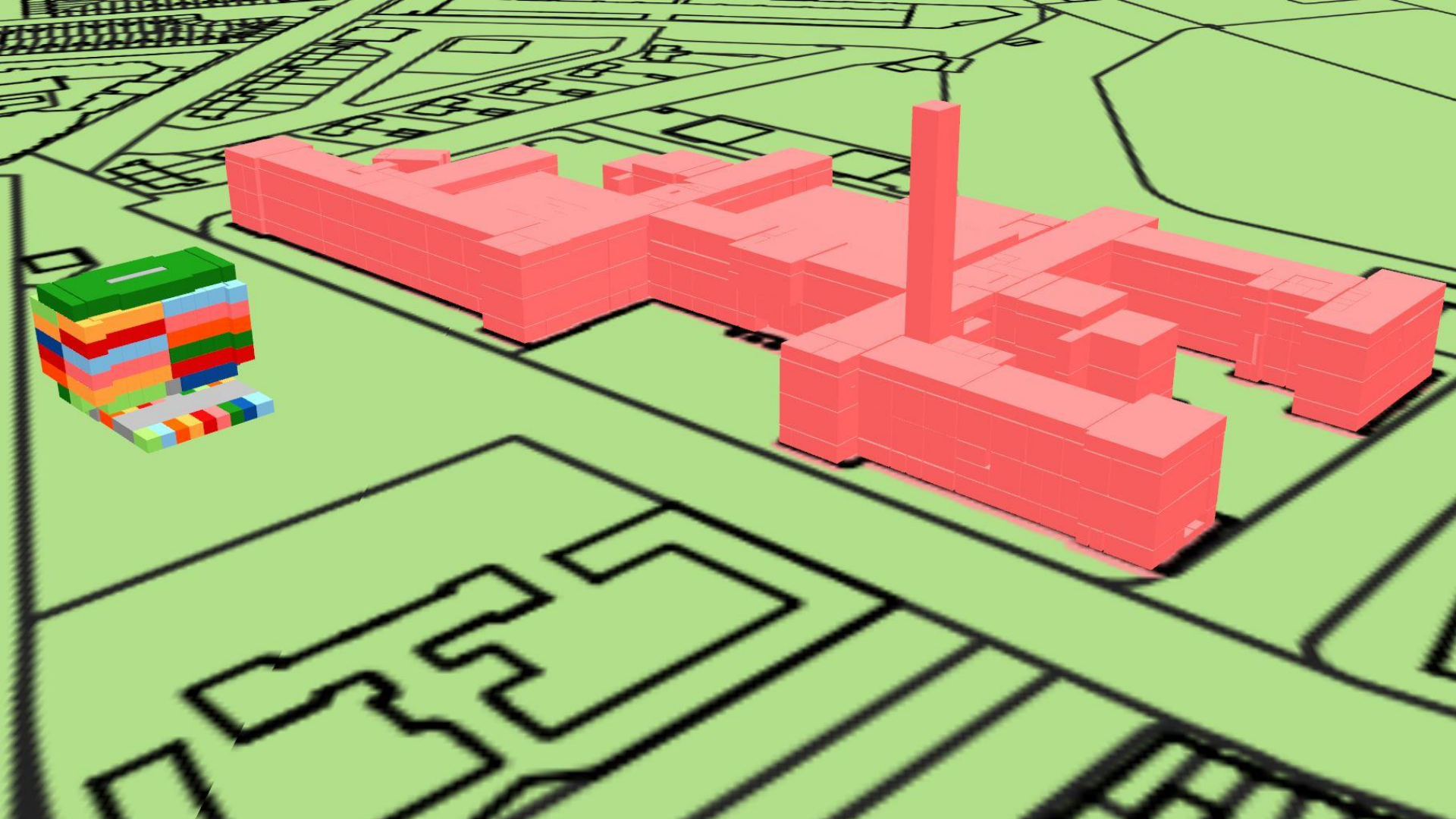
Methodology

Proof of Concept

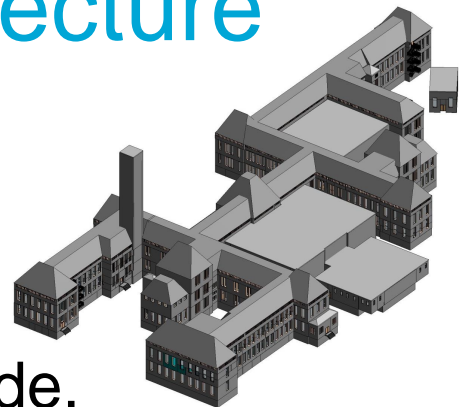
Case Study

Conclusions





TU Delft Faculty of Architecture



- Existing building
- Geo-referenced
 - **IfcSite**: RefLatitude, RefLongitude, RefElevation
 - Orientation
 - IfcProject, TruNorth attribute, IfcDirection
- RD + NAP possible

Introduction

Motivation

Methodology

Proof of Concept

Case Study

Conclusions

Proof of concept

Introduction

Motivation

Methodology

Proof of Concept

Case Study

Conclusions

1. Enriched BIM Legal creation
2. Automatic extraction of 3D legal space
3. Validation
4. Storage
5. Visualisation
6. (sub-) Splitting

Validation

- In IFC with ruleset
- In database (extracted legal space)
checks for:
 - Overlap
 - Naming

Introduction

Motivation

Methodology

Proof of Concept

Case Study

Conclusions

Introduction

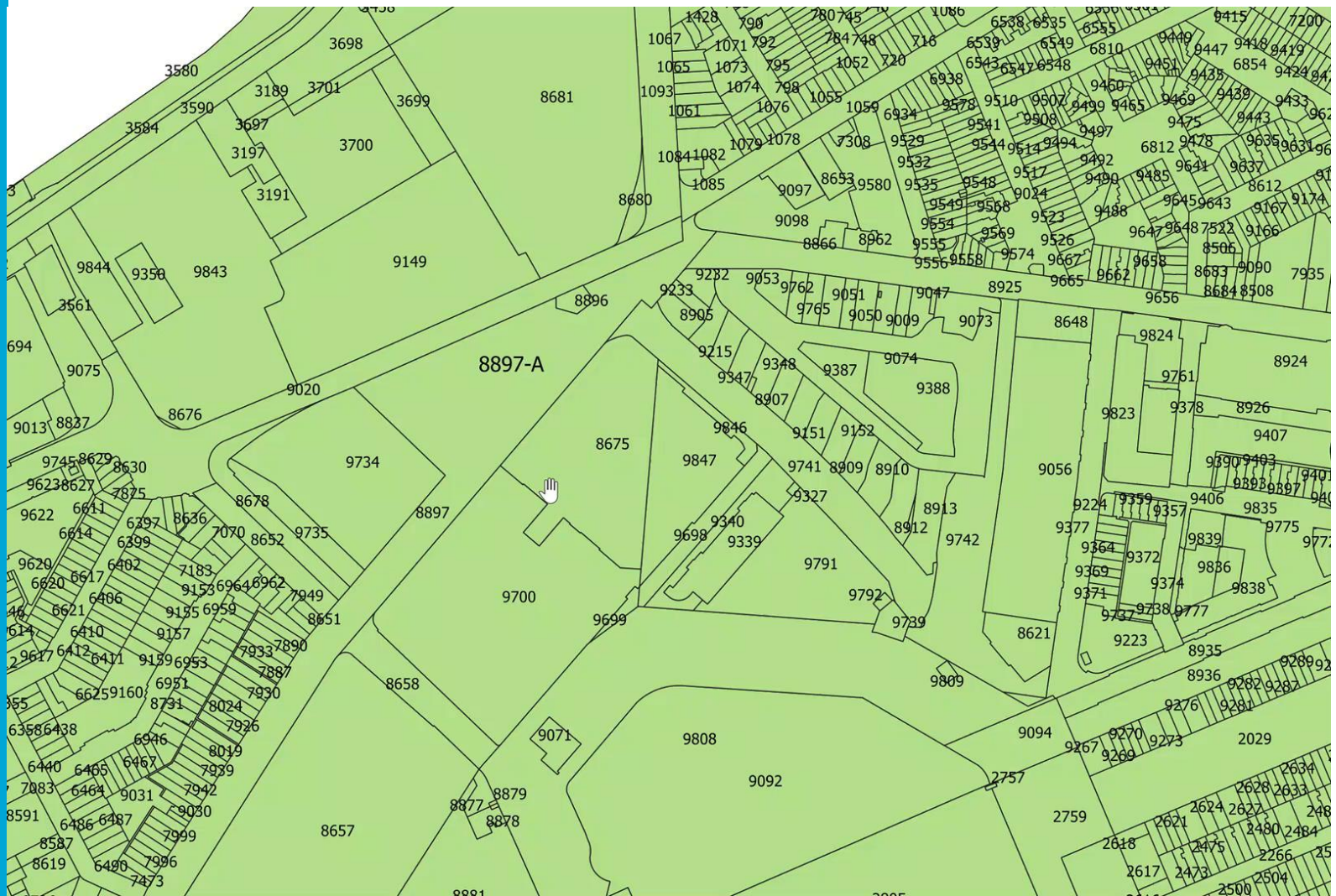
Motivation

Methodology

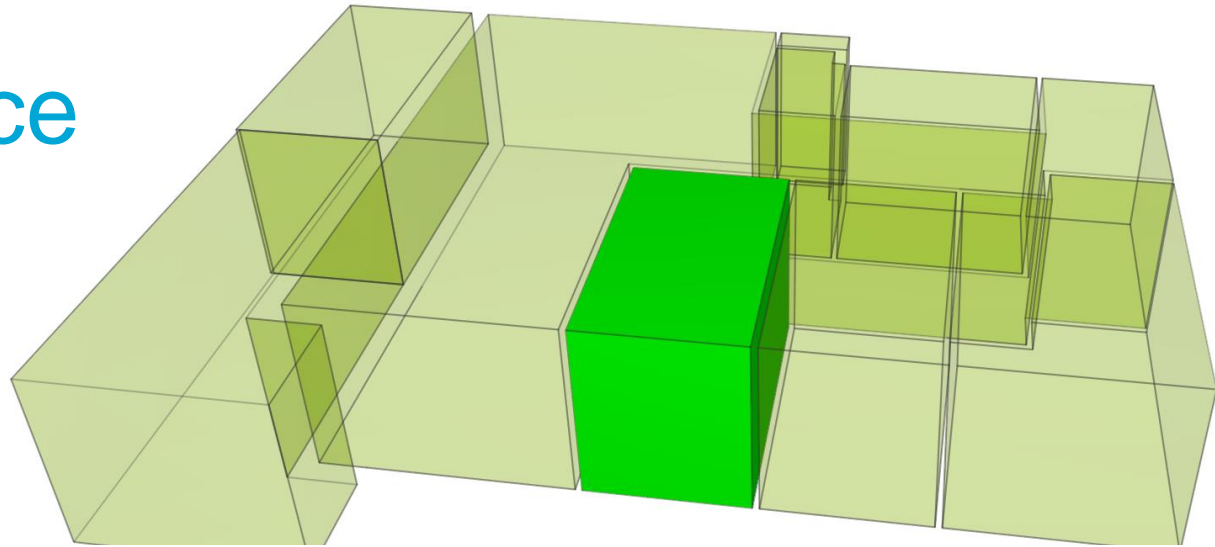
Proof of Concept

Case Study

Conclusions



IfcSpace



Introduction

Motivation

Methodology

Proof of Concept

Case Study

Conclusions

INFO

Space.4.8 : Room[133]

Identification	Location	Quantities	Profile	Relations	Space Boundaries	Space Boundary Areas	Classification
Hyperlinks	Pset_AirSideSystemInformation			Pset_CadastralInformation		Pset_ProductRequirements	Pset_SpaceCommon
Property				Value			
complexnumber				8897 A			
indexnumber				15			
municipality				Delft			
parcelnumber				8897			
section				A			
spacetype				Private			

Proof of concept

Introduction

Motivation

Methodology

Proof of Concept

Case Study

Conclusions

1. Enriched BIM Legal creation
2. Automatic extraction of 3D legal space
3. Validation
4. Storage
5. Visualisation
6. (sub-) Splitting

LADM / ISO 19152 mapping

Introduction

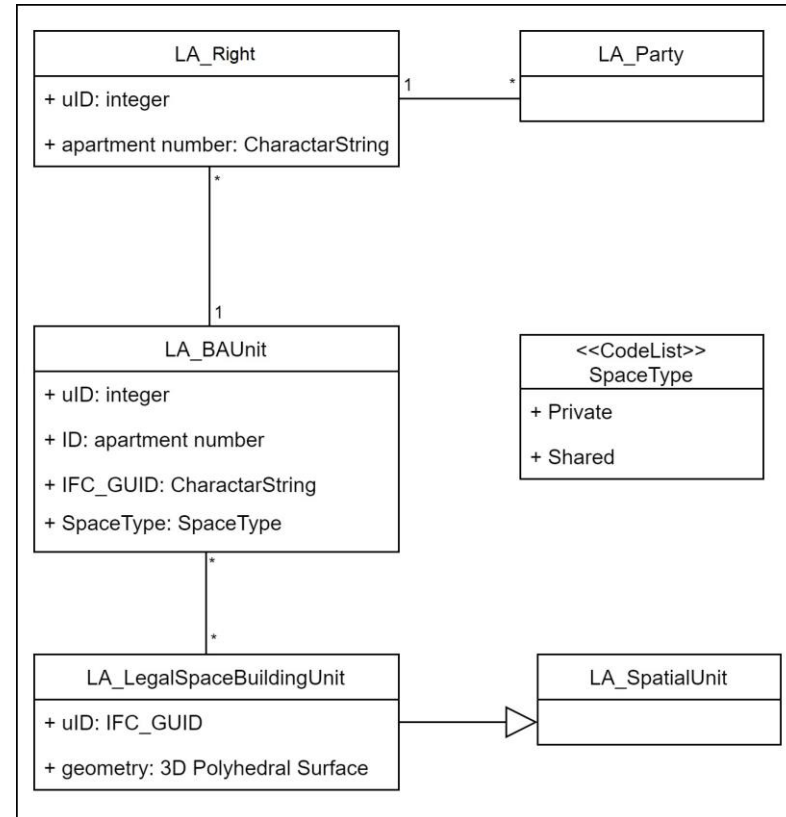
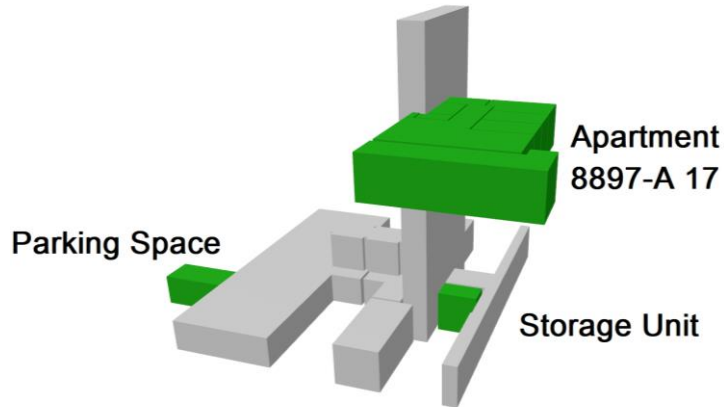
Motivation

Methodology

Proof of Concept

Case Study

Conclusions



Proof of concept

Introduction

Motivation

Methodology

Proof of Concept

Case Study

Conclusions

1. Enriched BIM Legal creation
2. Automatic extraction of 3D legal space
3. Validation
4. Storage
5. Visualisation
6. (sub-) Splitting

Web browser-based viewer

Introduction

Motivation

Methodology

Proof of Concept

Case Study

Conclusions

- Prototype
- Similiar Platform as in (Cemellini et al., 2018)
- <http://pakhuis.tudelft.nl:8080/edu/cesium/apps/bimlegal/>

Web browser-based viewer

Introduction

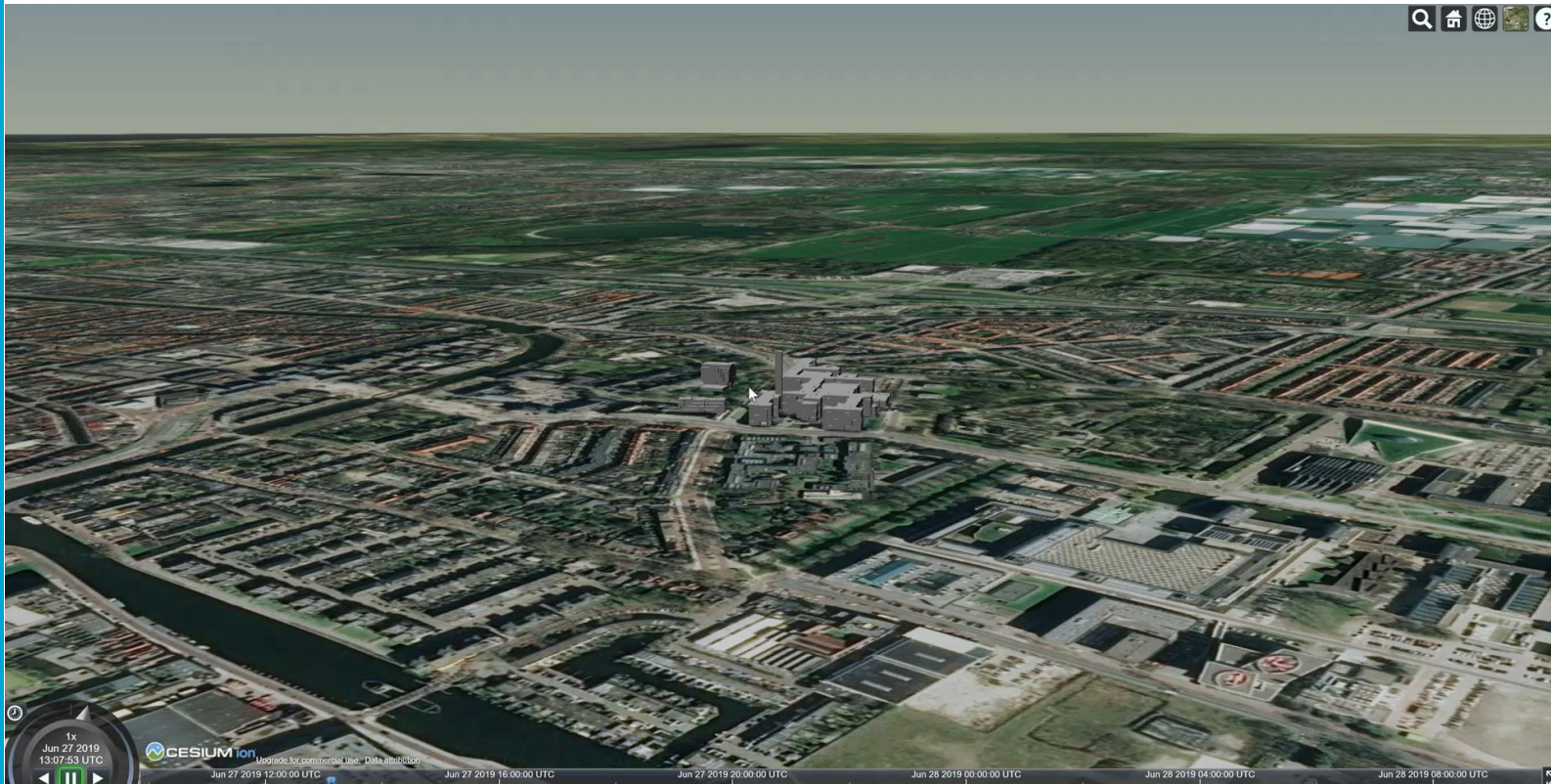
Motivation

Methodology

Proof of Concept

Case Study

Conclusions



Proof of concept

Introduction

Motivation

Methodology

Proof of Concept

Case Study

Conclusions

1. Enriched BIM Legal creation
2. Automatic extraction of 3D legal space
3. Validation
4. Storage
5. Visualisation
6. (sub-) Splitting

Case study: Splitting apartment rights

Introduction

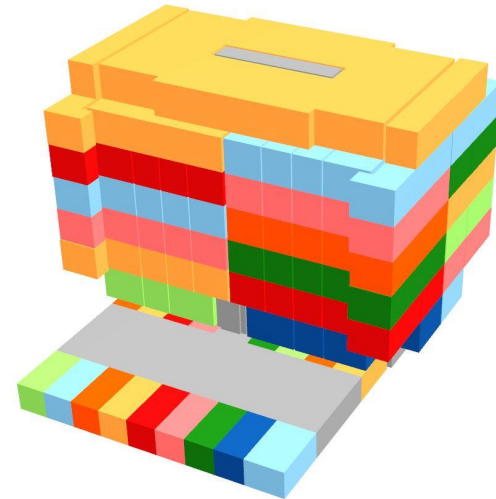
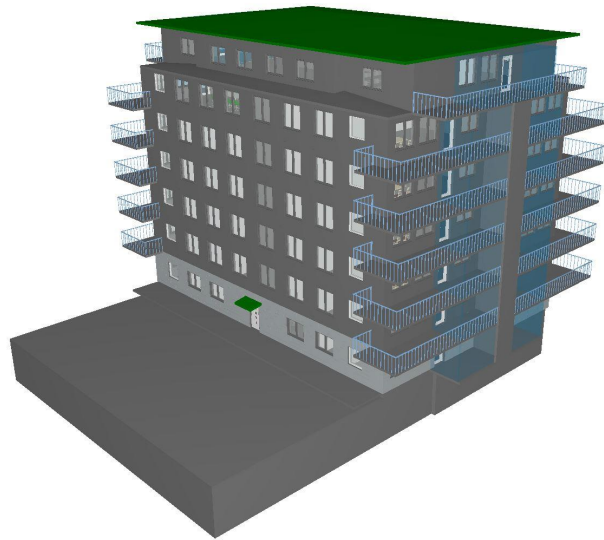
Motivation

Methodology

Proof of Concept

Case Study

Conclusions



Introduction

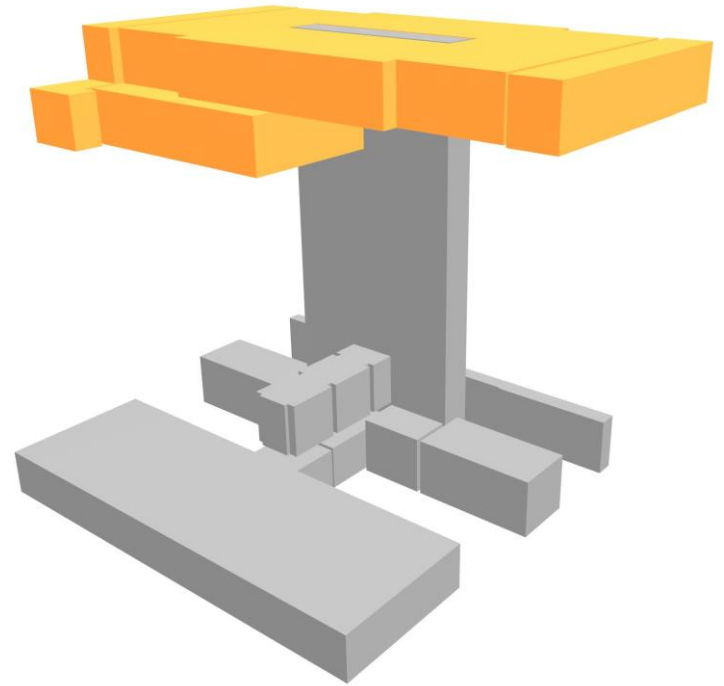
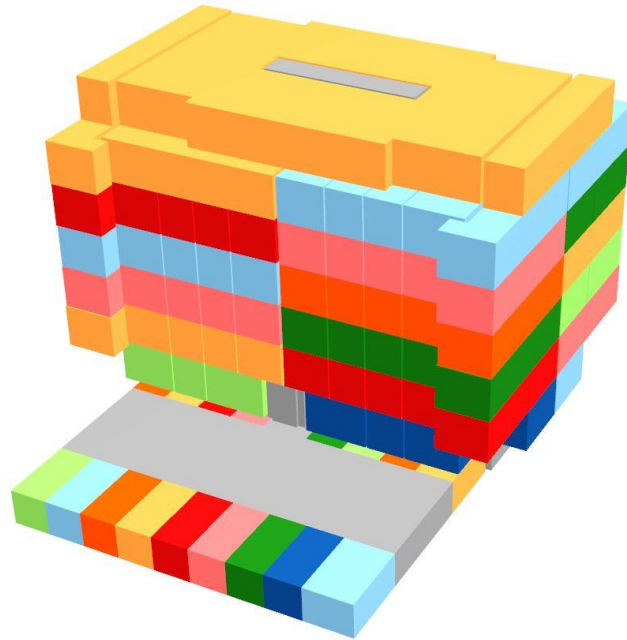
Motivation

Methodology

Proof of Concept

Case Study

Conclusions



Introduction

Motivation

Methodology

Proof of Concept

Case Study

Conclusions



Introduction

Motivation

Methodology

Proof of Concept

Case Study

Conclusions

Identify Results

Feature	Value
ifc_unique_id	3PSZ2MrbjCdPljJiR\$ae9_11418
ifc_parent_unique_id	0XrdN7Vy53RvgjNwf6LCxU_160
ifc_parent_id	0XrdN7Vy53RvgjNwf6LCxU
pset_cadastralinformation_complexnumber	8897 A
pset_cadastralinformation_housenumber	
pset_cadastralinformation_indexnumber	22
pset_cadastralinformation_parcelnumber	8897
pset_cadastralinformation_spacetype	Private
pset_cadastralinformation_municipality	Delft
pset_cadastralinformation_section	A
apartment_number	8897 A 22

Mode: Top down
View: Tree
3D Map 1

The image shows a 3D visualization of a building structure composed of many small, colored blocks. A blue arrow points from the 'Value' column of the table above to a specific part of the building structure. The building is situated on a green field with black lines representing paths or boundaries. In the background, there is a red structure, possibly another building or a wall.

Introduction

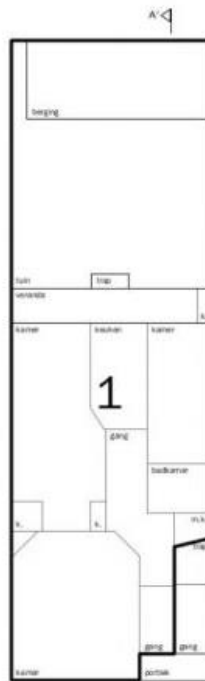
Motivation

Methodology

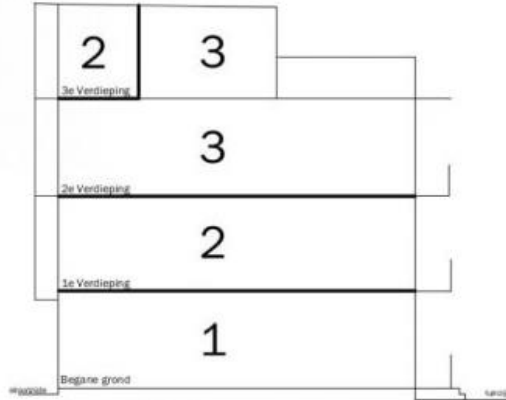
Proof of Concept

Case Study

Conclusions



Begane grond
schaal 1:100



Doorsnede A-A'
schaal 1:100



1e Verdieping
schaal 1:100



2e Verdieping
schaal 1:100



3e Verdieping
schaal 1:100



Situatietekening
schaal 1:1000

Voorgenomen splitsing in 3 appartementsrechten kadastraal bekend:

GEMEENTE Amsterdam SECTIE X NUMMER ####

Plaatselijk bekend als; XXXXXXXX ###

De datum; De Notaris;

Introduction

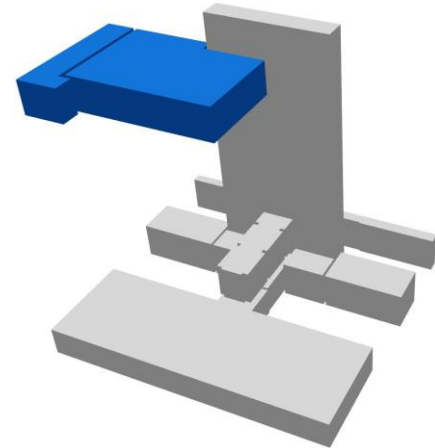
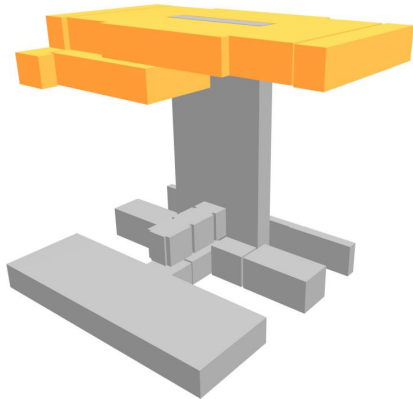
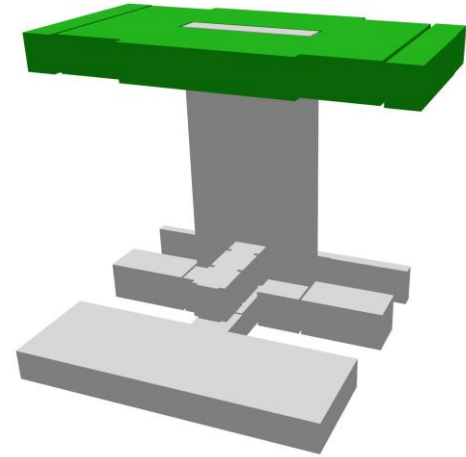
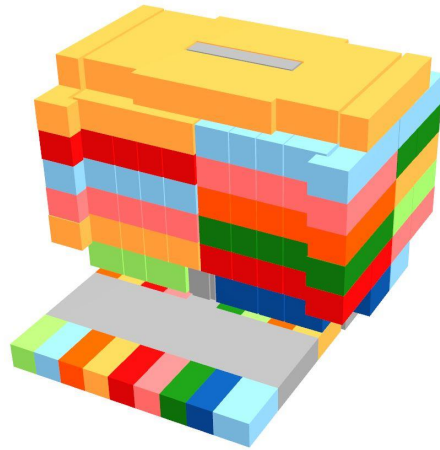
Motivation

Methodology

Proof of Concept

Case Study

Conclusions



Introduction

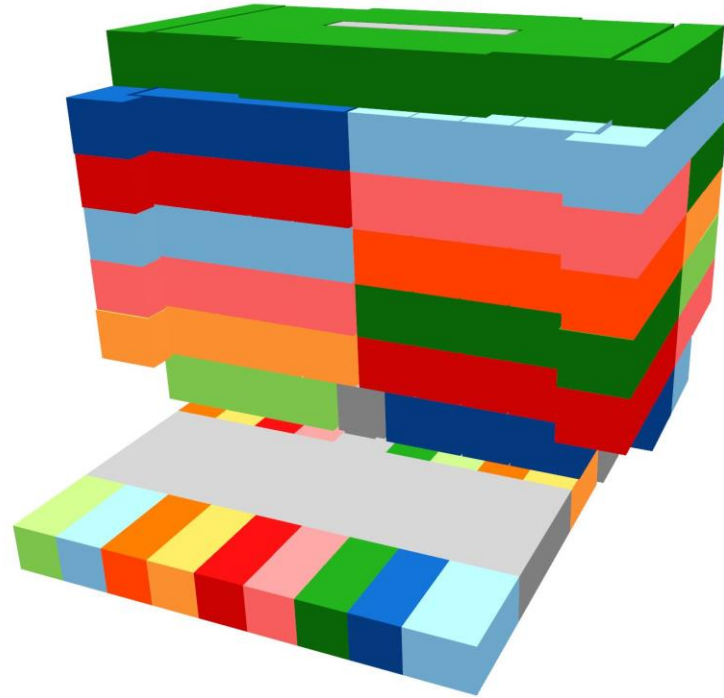
Motivation

Methodology

Proof of Concept

Case Study

Conclusions



Conclusions

- IFC BIM can be enriched with legal space by a Cadastral Information User Defined Property set
- Fits the existing legal framework and current practices
- First time 3D geometry in Dutch cadastral database
- Solution is extensible to other juridical systems

Introduction

Motivation

Methodology

Proof of Concept

Case Study

Conclusions

Future Work

- Develop system architecture for data base transactions via web browser
- Have the *Pset_CadastralInformation* become an IFC common property set (standardized in the data format)
- What to do with source data (IFC file)
- What about ‘as-designed/as-built’ discrepancy

Introduction

Motivation

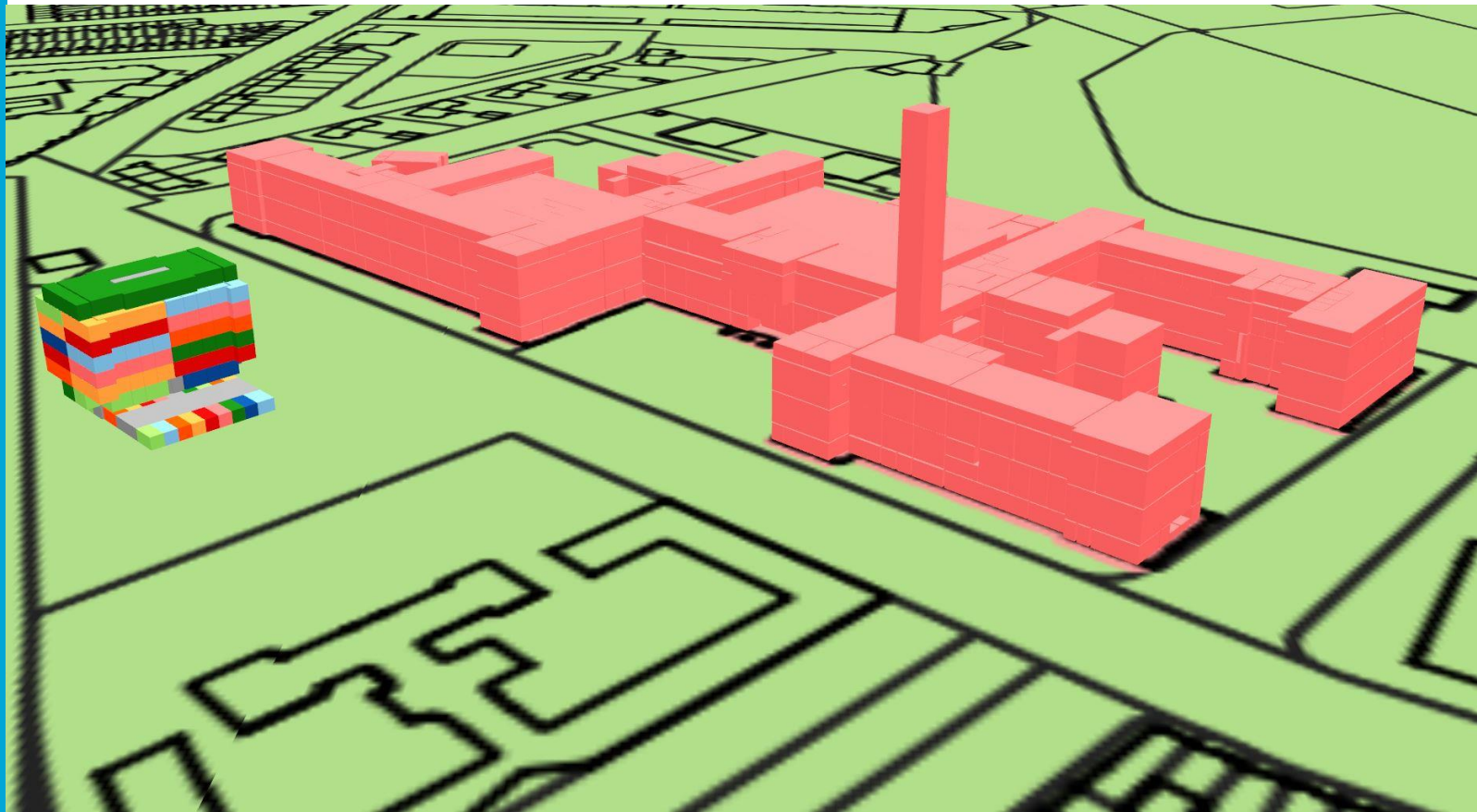
Methodology

Proof of Concept

Case Study

Conclusions

Questions?



References

- Figure 1: Kadaster Logo. Retrieved from <https://www.kadaster.nl/>
- Figure 2: <http://healthcare.wsp-pb.com/building-information-modelling-bim/>
- Figure 3: <https://offringa-bm.nl/splitsingstekening/>
- Figure 4: Atazadeh, B., Kalantari, M., Rajabifard, A., & Ho, S. (2017). Modelling building ownership boundaries within BIM environment: A case study in Victoria, Australia. *Computers, Environment and Urban Systems*, 61, 24-38.
- Figure 5: Stoter et al., 2016. First 3D Cadastral Registration of Multi-level Ownership Rights in the Netherlands. 5th International FIG 3D Cadastre Workshop.
- Symbols Slide 16:
 - Industry symbol: <https://www.kisspng.com/png-industry-computer-icons-clip-art-industry-icon-3357635>
 - Academic symbol: <https://www.kisspng.com/png-square-academic-cap-computer-icons-portable-networ-5948017/download-png.html>
 - BuildingSmart Logo: <https://avatars2.githubusercontent.com/u/5180517?s=200&v=4>
 - Law symbol: <https://www.ukpreppersguide.co.uk/wp-content/uploads/2016/04/law-symbol-12-300x273.jpg>
 - IDM symbol: https://www.bimloket.nl/upload/images/logos/BIM_BASIS%20ILS_logo.png
 - Document symbol: https://www.flaticon.com/free-icon/documents-symbol_35920
 - Map symbol: <https://www.vectorstock.com/royalty-free-vector/folding-paper-map-icon-symbol-of-travelling-and-vector-19918721>