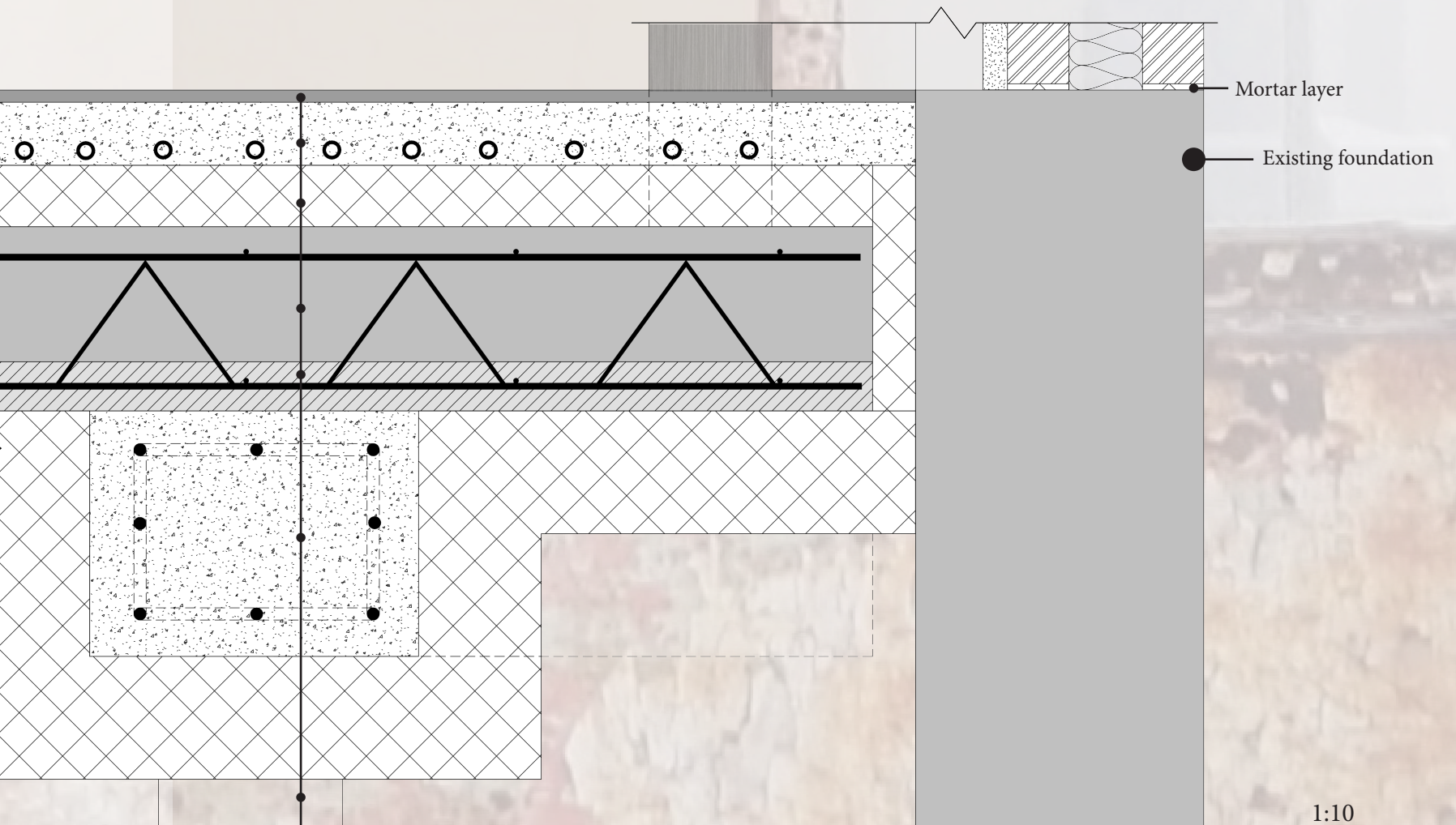
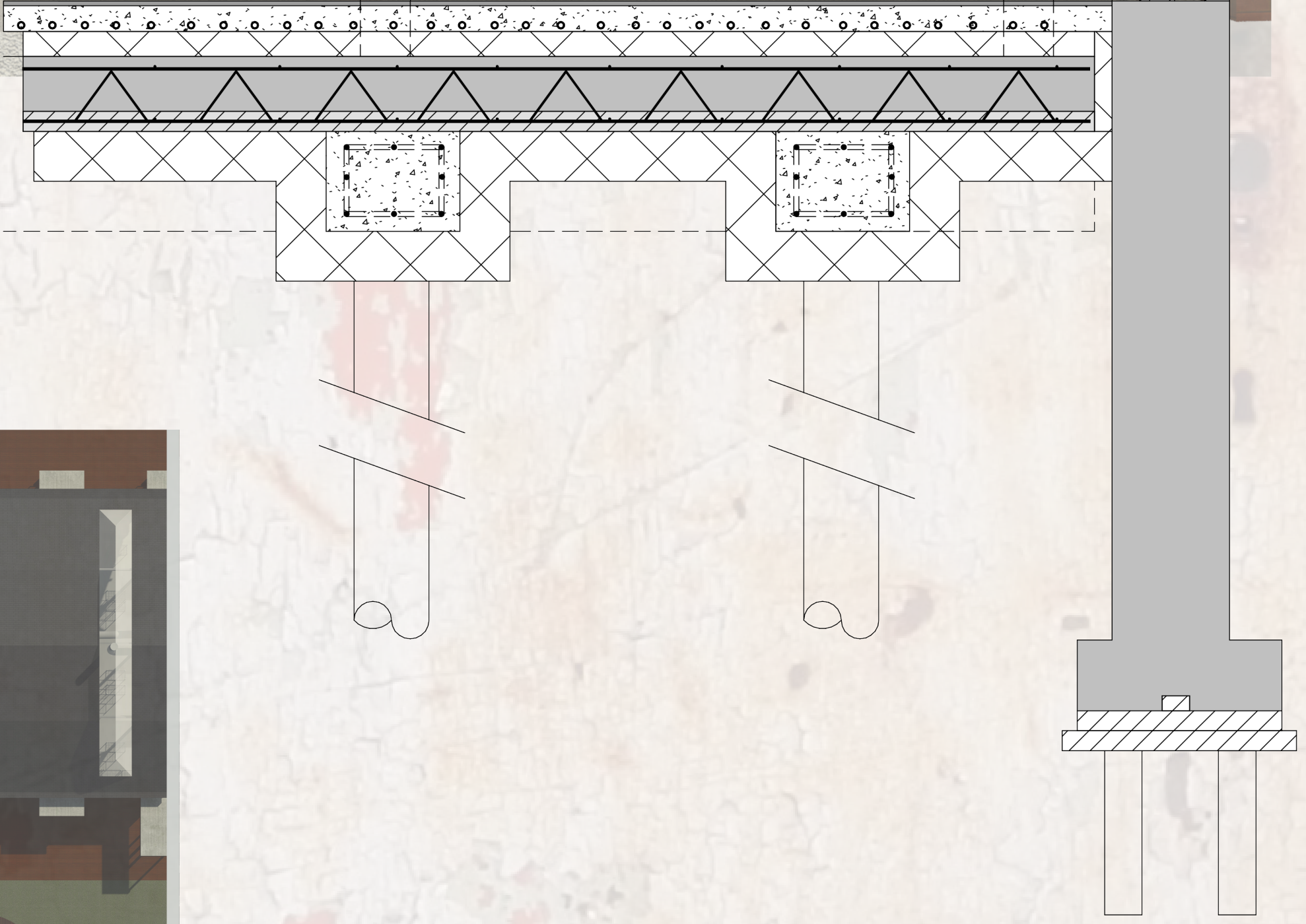
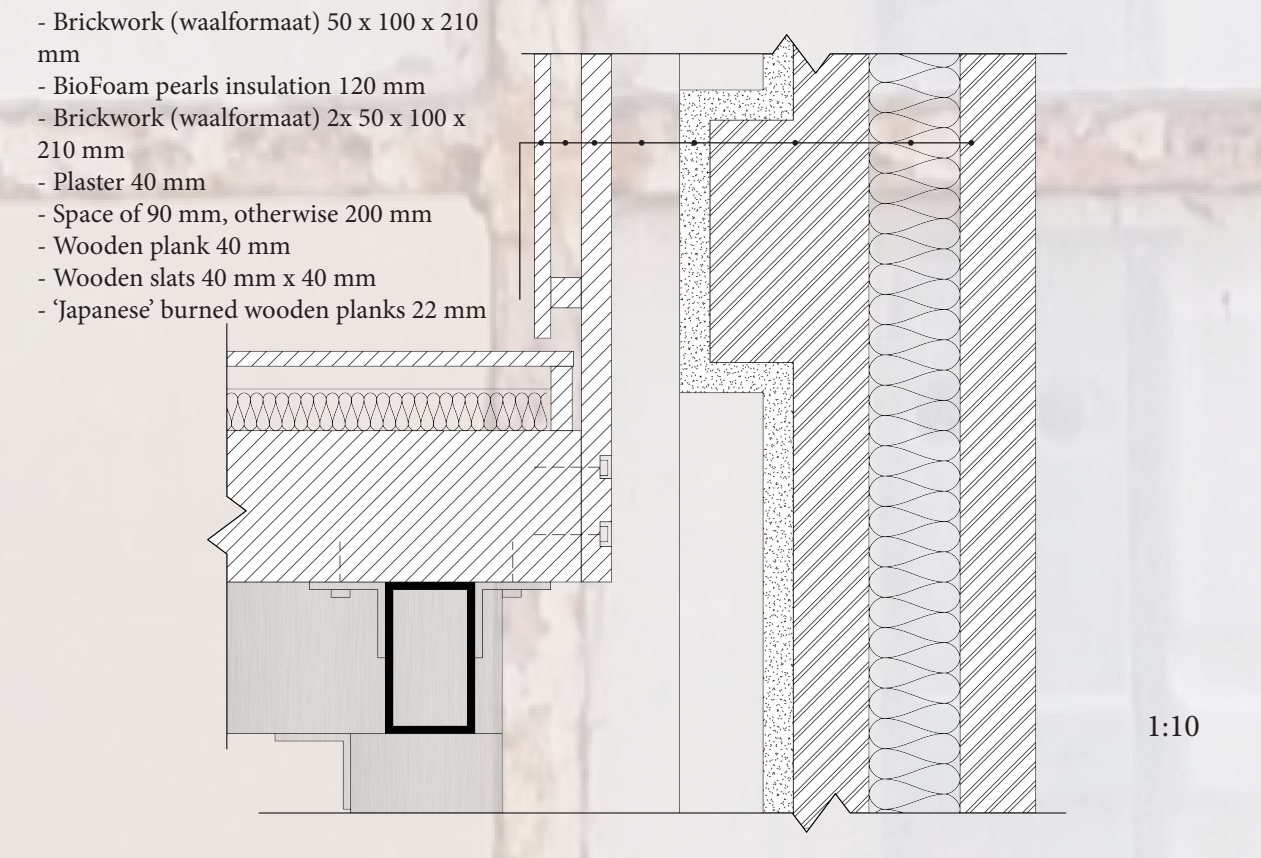
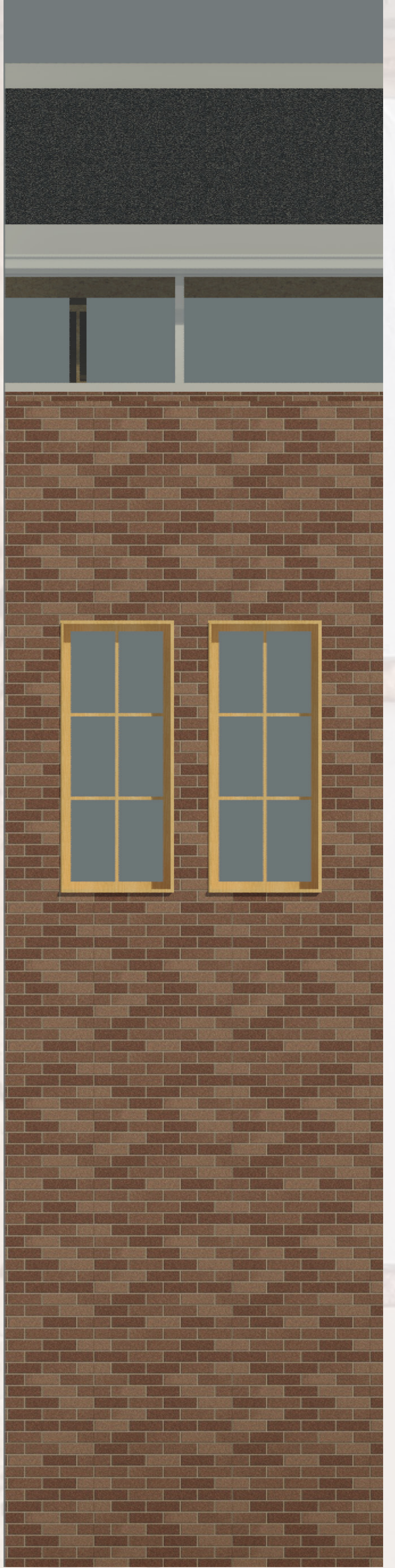
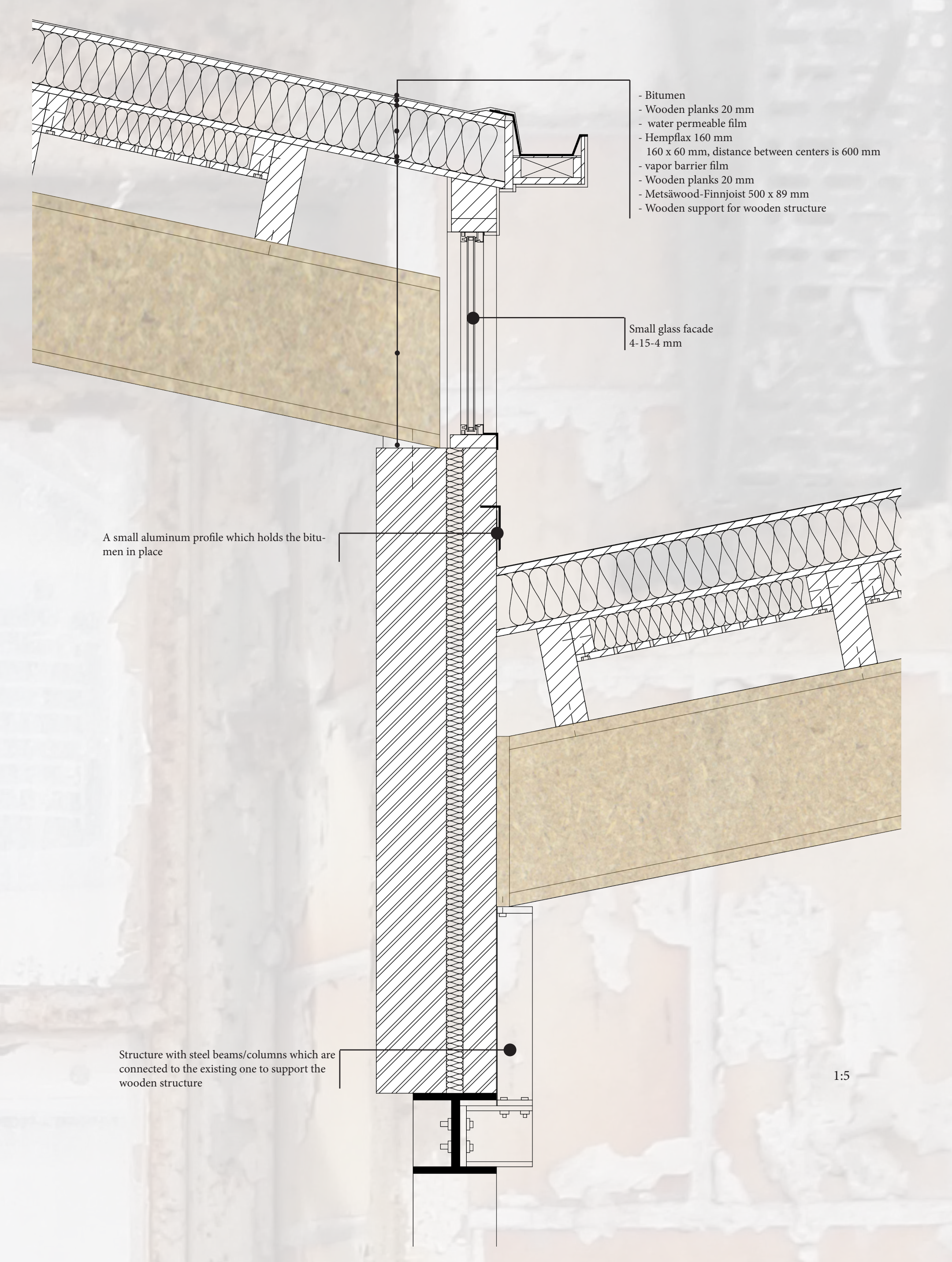
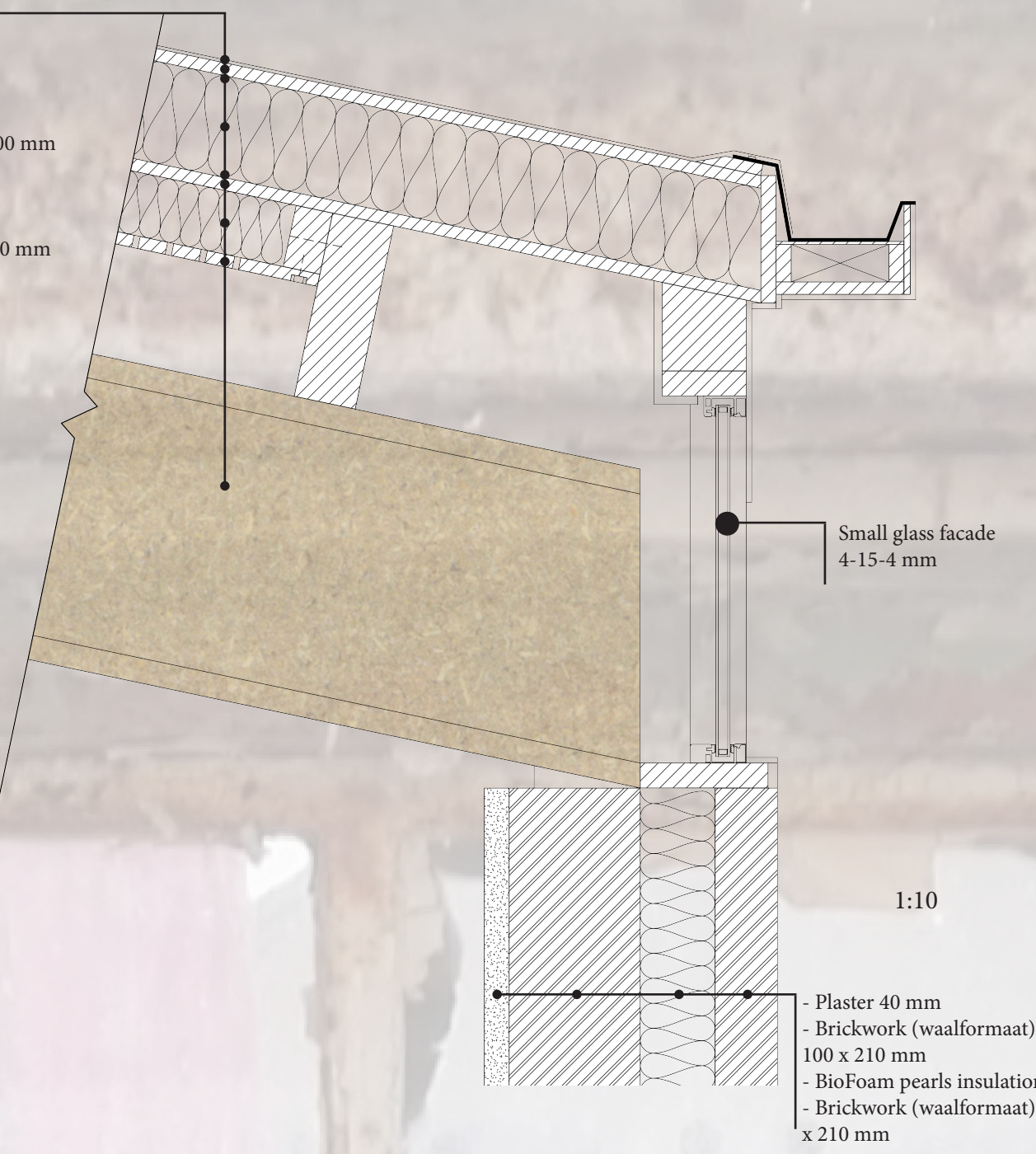




- Bitumen
- Wooden planks 20 mm
- water permeable film
- Hempflax 160 mm
- 160 x 60 mm, distance between centers is 600 mm
- vapor barrier film
- Wooden planks 20 mm
- Hempflax 100 mm
- 100 x 60 mm, distance between centers is 600 mm
- Perforated wooden plank 20 mm
- Metsawood-Finnplooi 500 x 89 mm
- Wooden support for wooden structure



- Clay floor 20 mm
- Throwel floor with floor heating 102 mm
- BioFoam insulation (hard) 100 mm
- Precast concrete panel
- Poured concrete 220 mm
- Prefabricated concrete panel with steel reinforcement 80 mm
- Foundation beam (poured concrete)
- Concrete foundation (cross) piles

