

COMPLEX PROJECTS

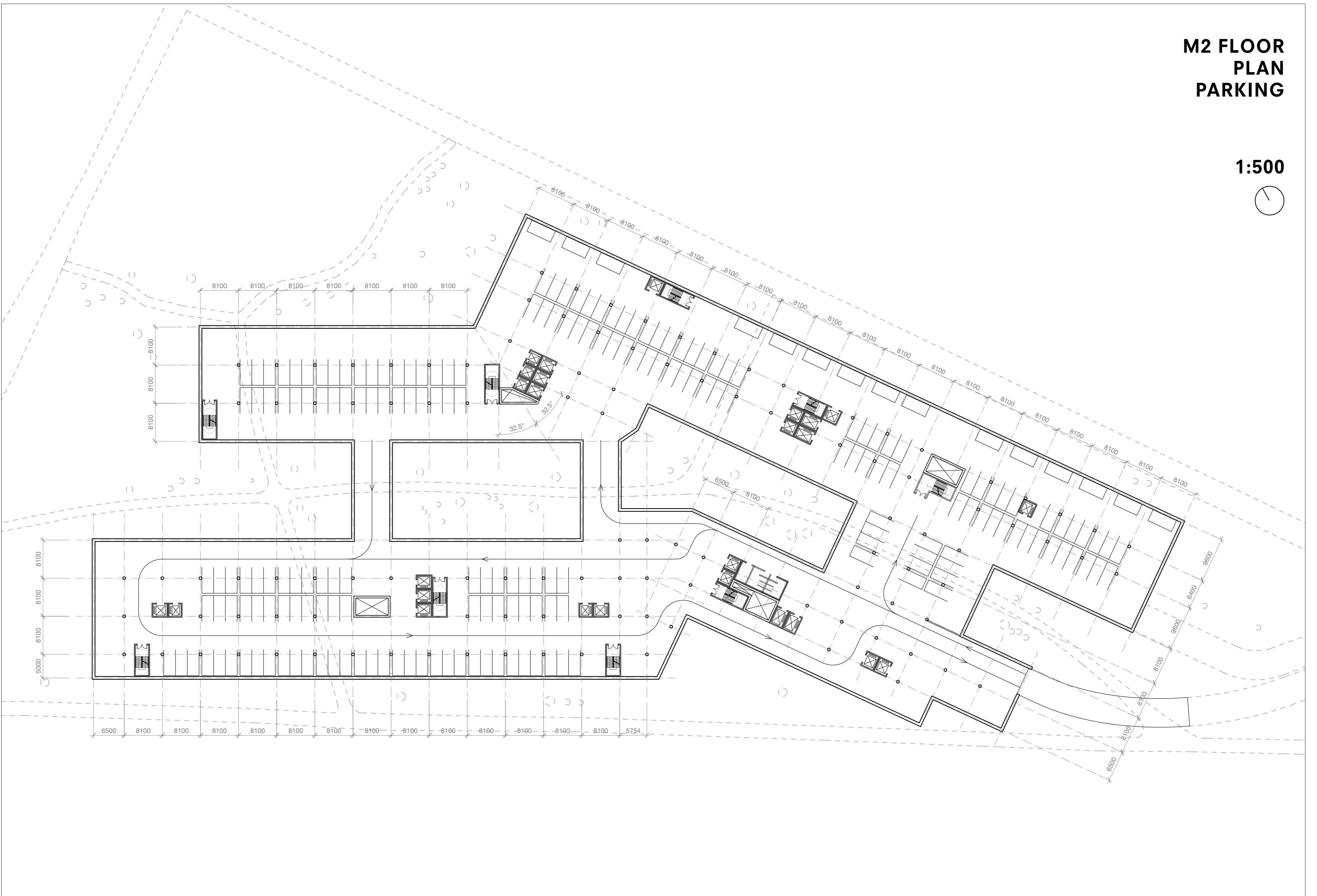
# **DRAWING SET**

Children's Hospital in Berlin

Jingjing Liu

**M2 FLOOR  
PLAN  
PARKING**

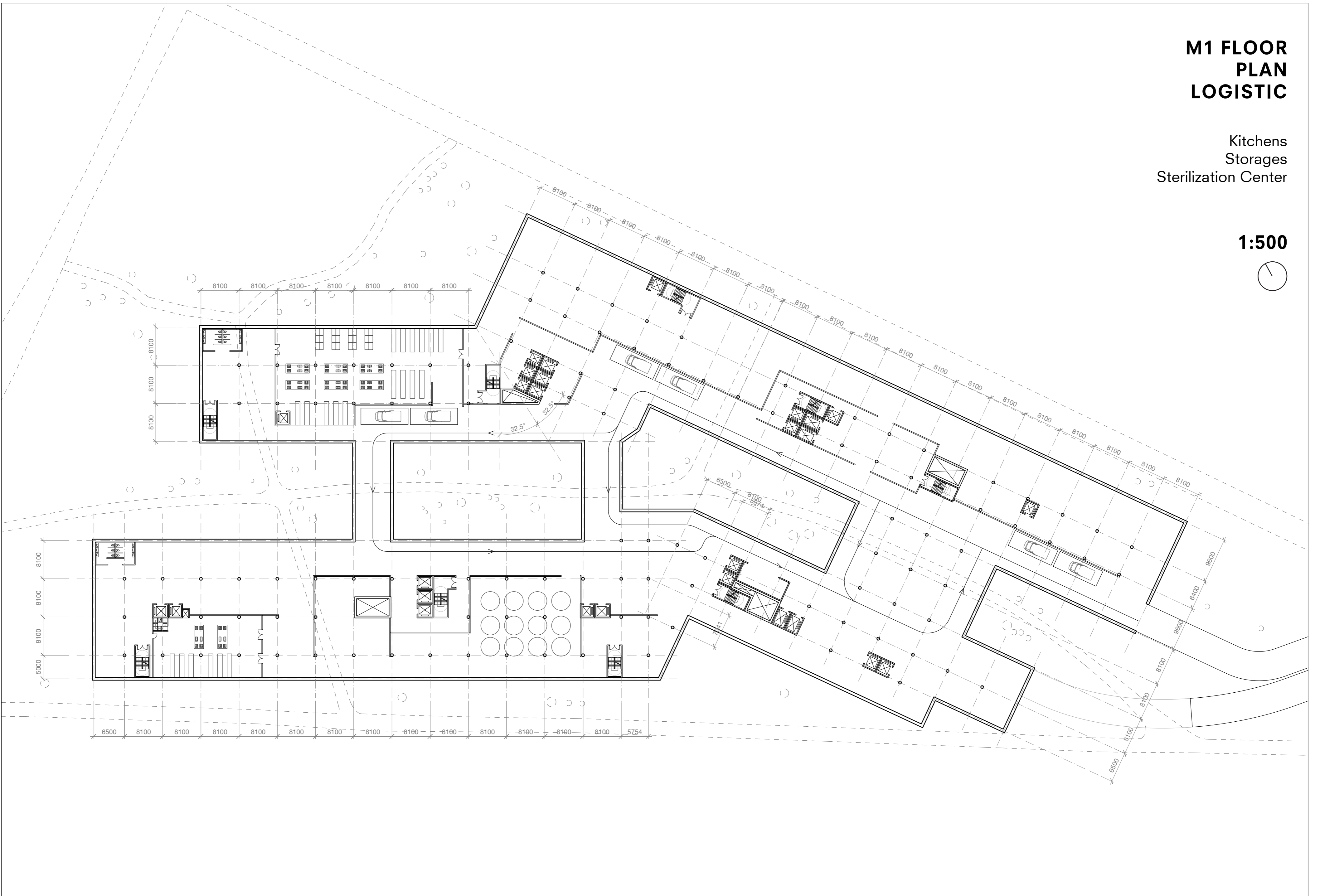
**1:500**



**M1 FLOOR  
PLAN  
LOGISTIC**

Kitchens  
Storages  
Sterilization Center

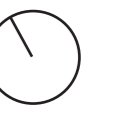
**1:500**



**GROUND FLOOR  
PLAN  
PUBLIC**

Administration  
Emergency  
Canteen  
Restaurant  
Cafe  
Rehabilitation Center

**1:500**



**1ST FLOOR  
PLAN  
MEDICAL**

Outpatient Treatment  
Pharmacy  
Medical Lab  
Daily Wards  
Wards

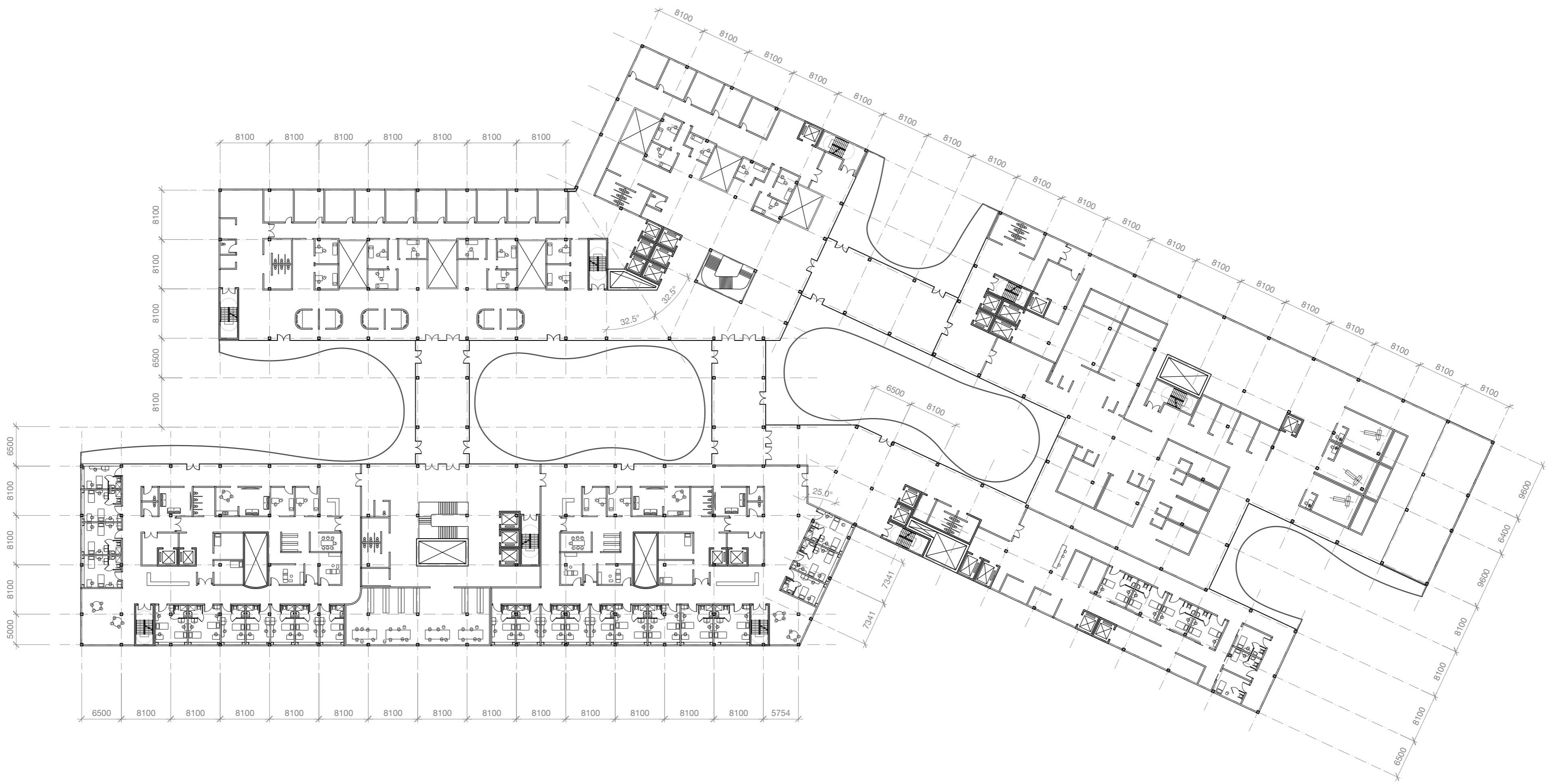
**1:500**



**2ND FLOOR  
PLAN  
MEDICAL**

Outpatient Clinic  
Imaging Department  
Daily Wards  
Wards

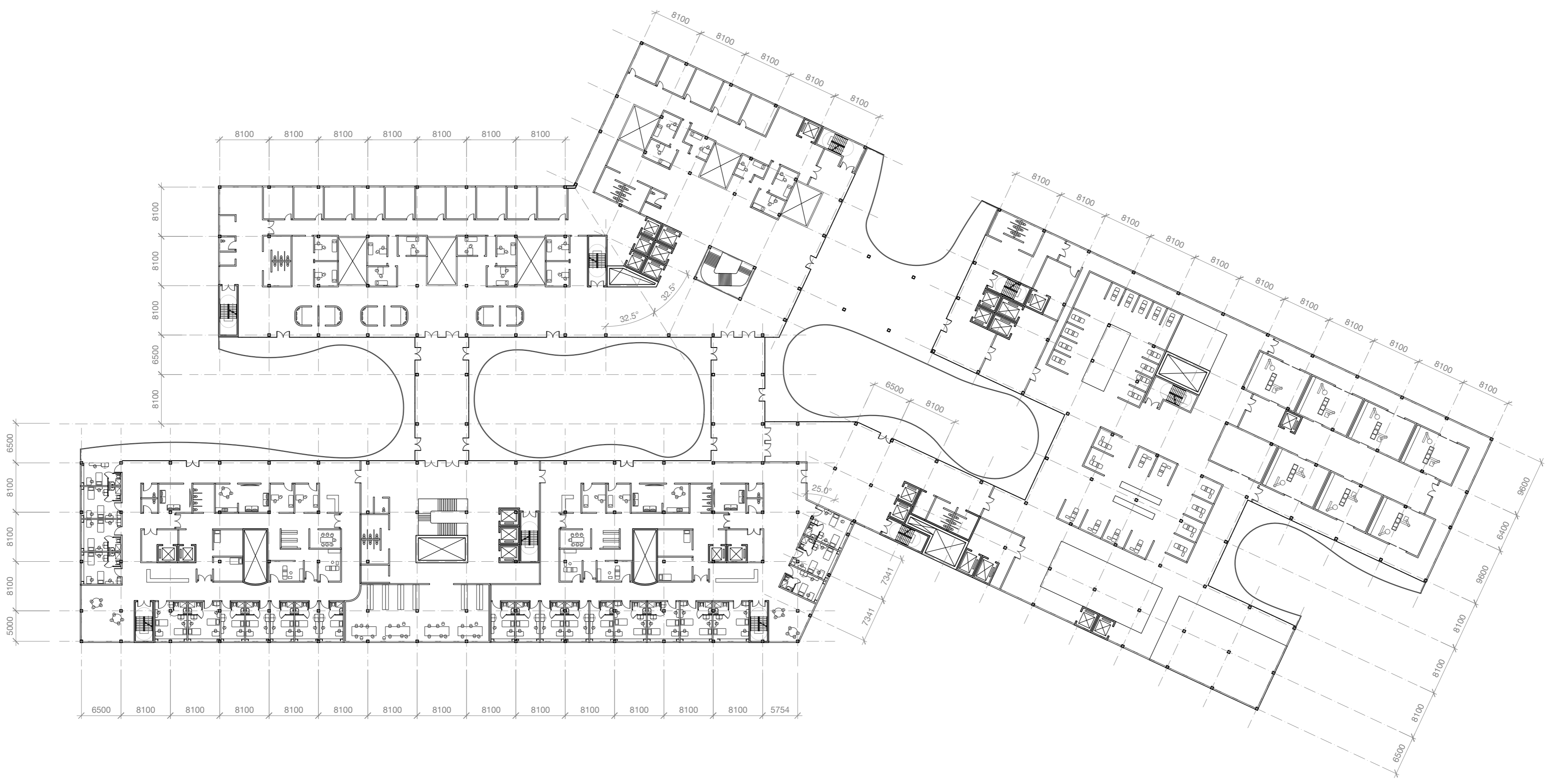
**1:500**



**3RD FLOOR  
PLAN  
MEDICAL**

Surgery Clinic  
Surgery Department  
Daily Wards  
Wards

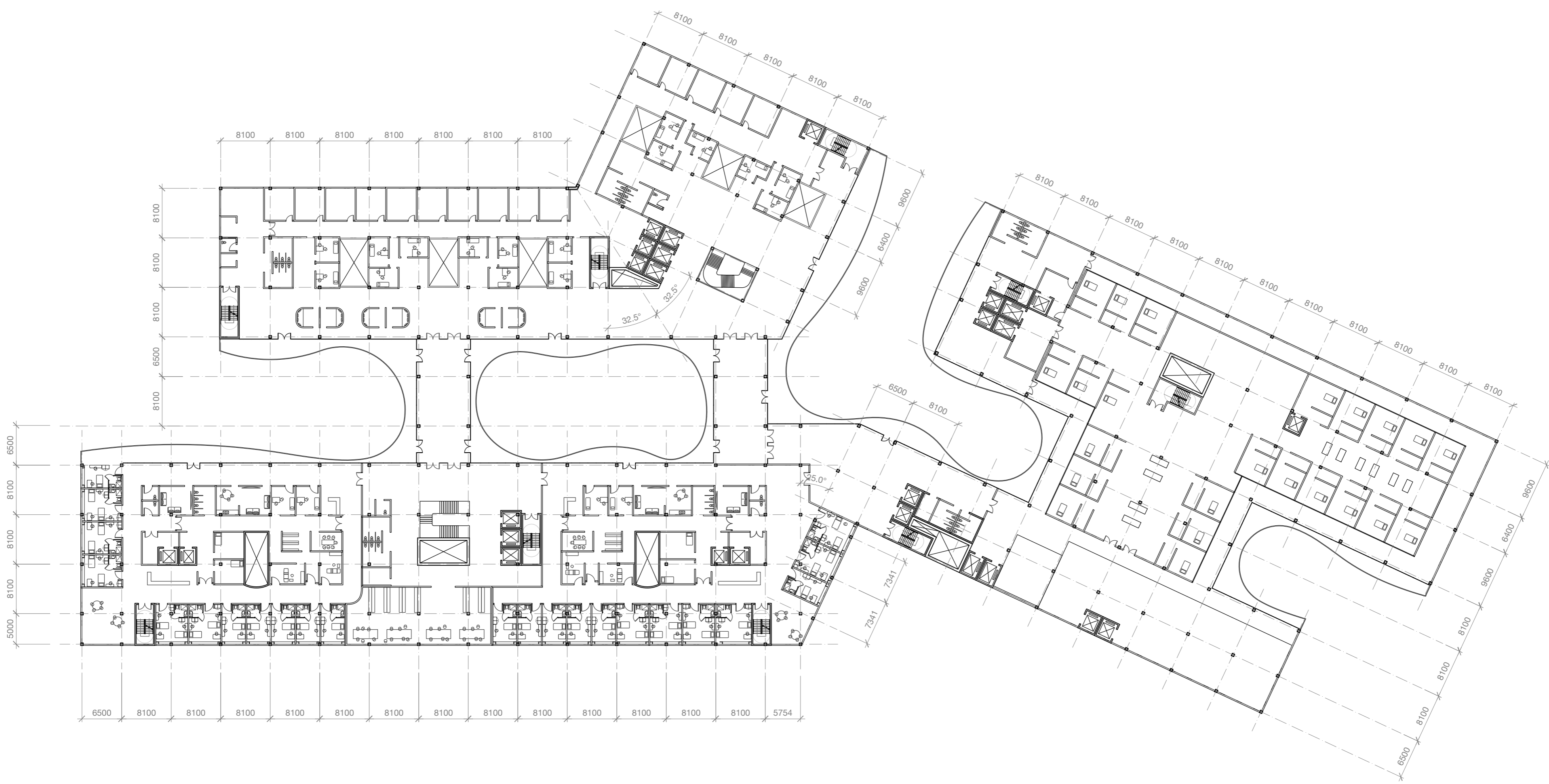
**1:500**



**4TH FLOOR  
PLAN  
MEDICAL**

Outpatient Clinic  
ICU  
Wards

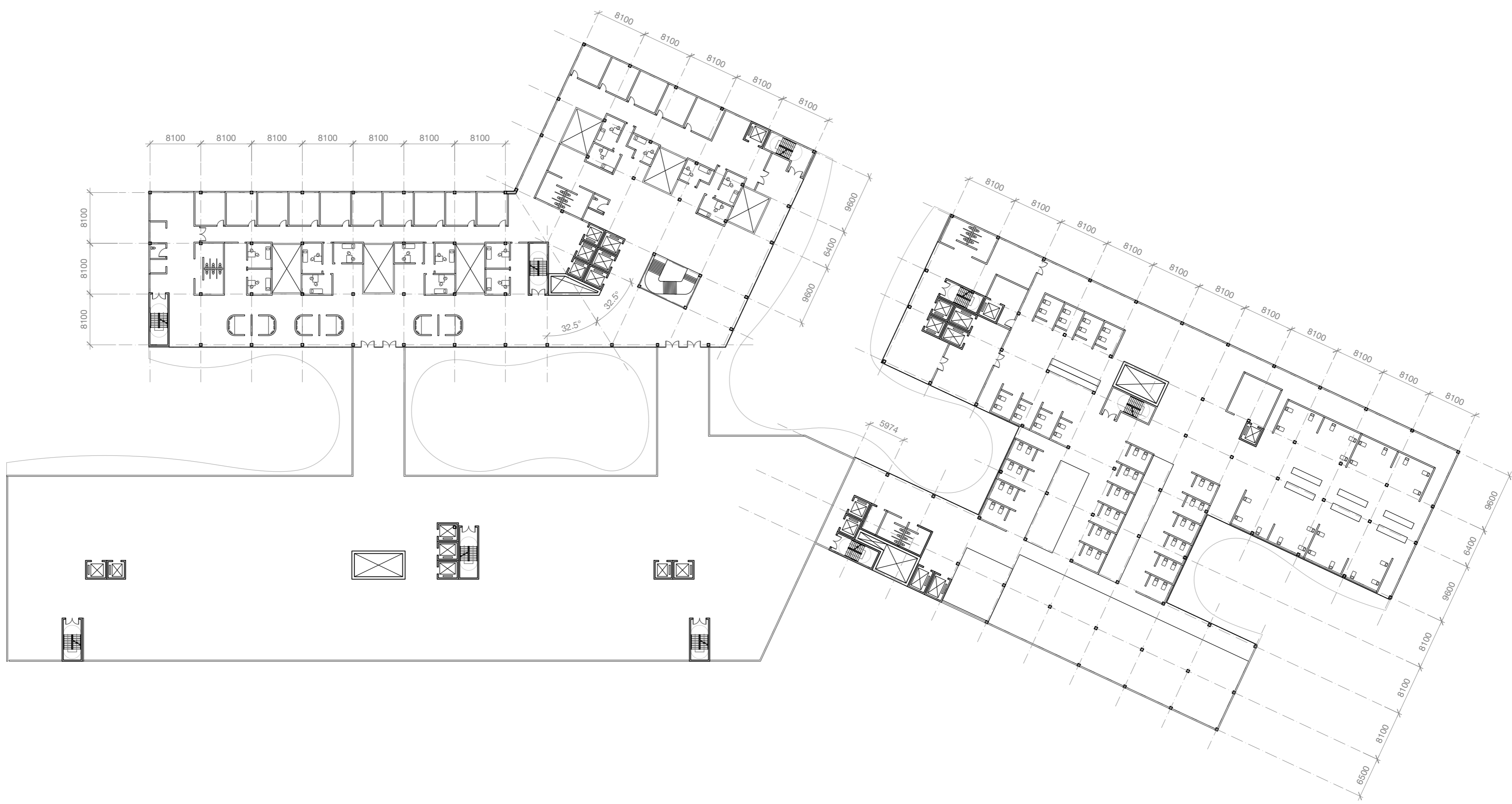
**1:500**



**5TH FLOOR  
PLAN  
MEDICAL**

Outpatient Clinic  
NICU  
Wards

**1:500**



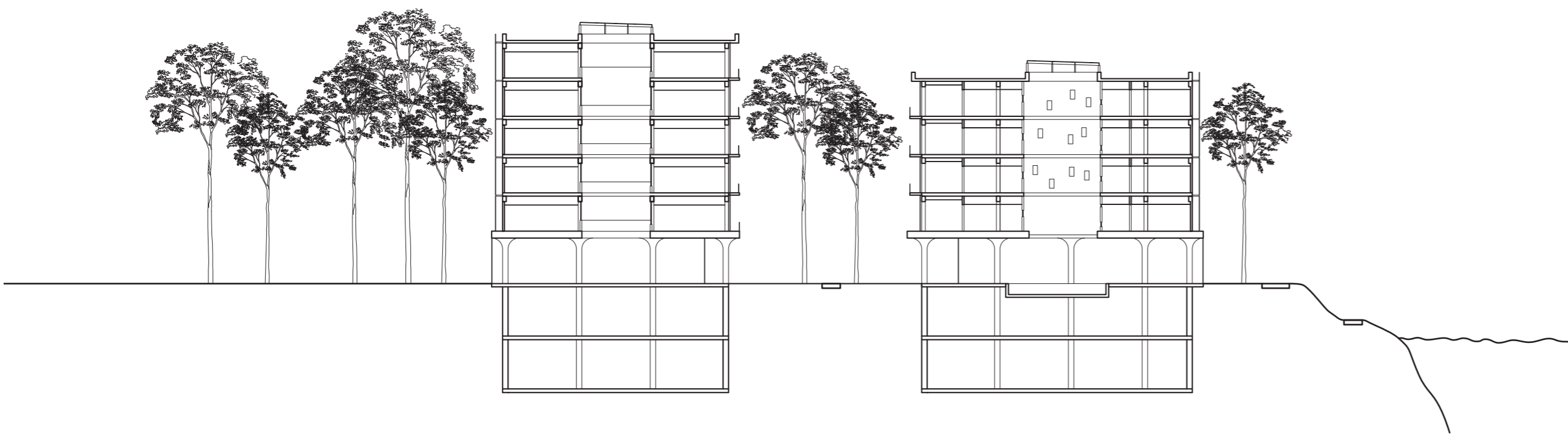
**GF PLAN  
WITH  
CONTEXT**

**1:1000**



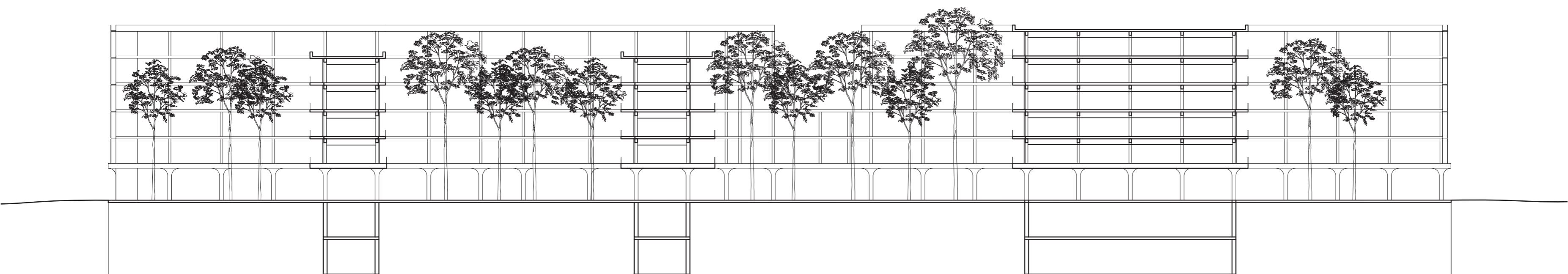
**SECTION  
A-A**

**1:500**



**SECTION  
B-B**

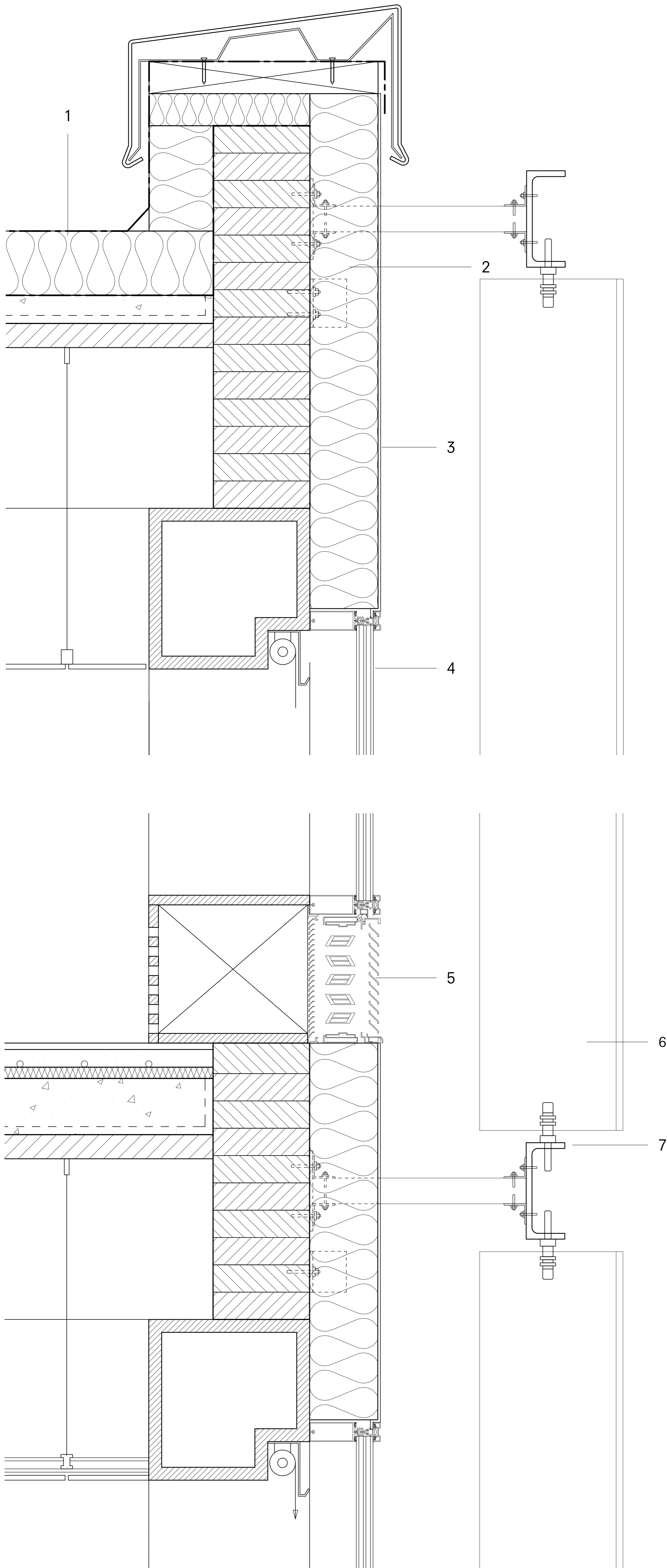
**1:500**



# DETAIL 1A | 1B RIVERSIDE

Louvre Facade  
Room Climate  
Roof

**1:5**  
(Scaled 75%)



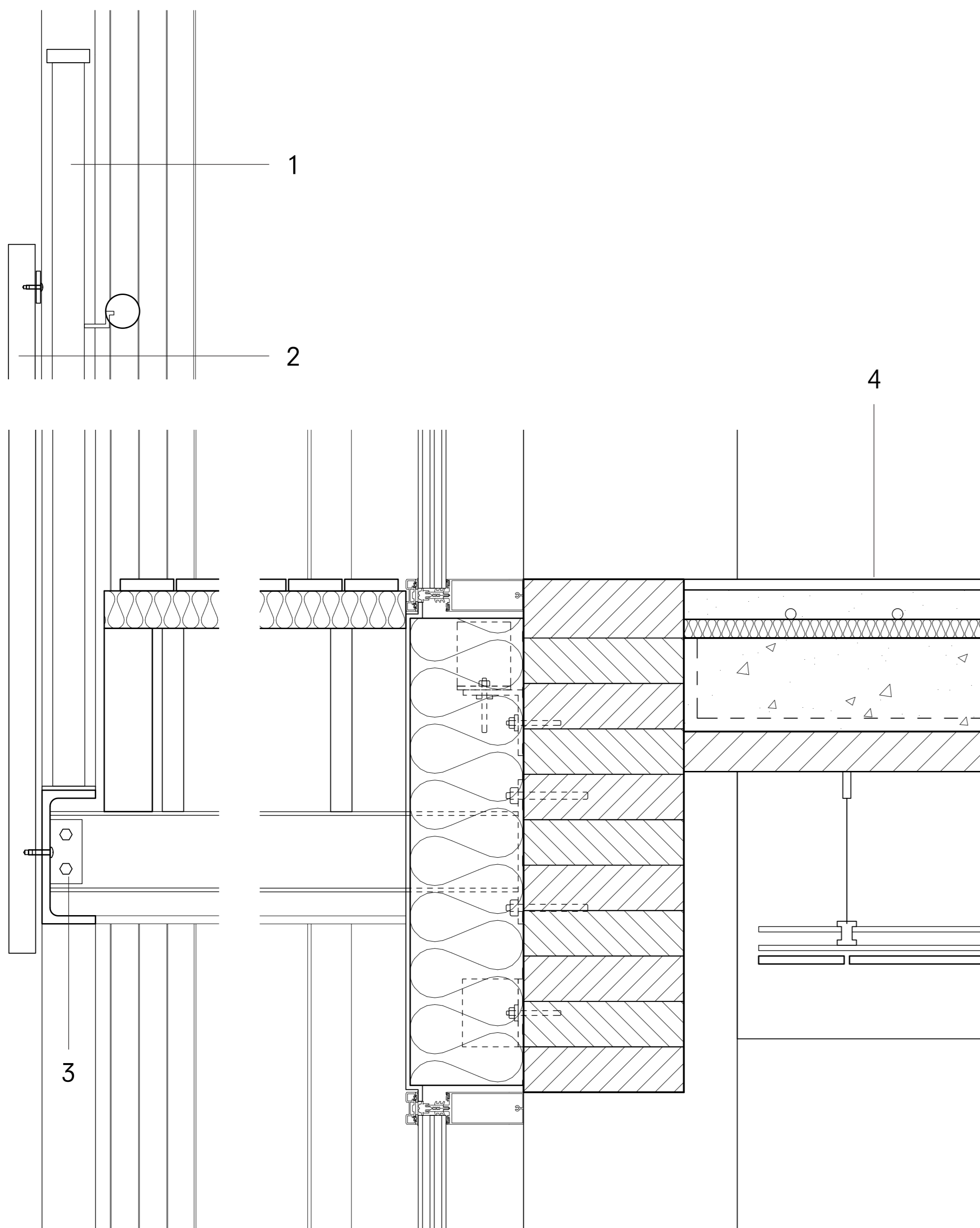
1. roof:
  - 1.4mm building protection mat
  - 200 mm PIR thermal insulation vapor barrier
  - 80 mm timber-concrete composite slab
2. 5mm aluminum parapet plate
3. aluminum-insulated panel
4. window:
  - triple glazing: 2 x 4mm laminated safety glass + 14 cavity + 8mm glass + 2 x 4 laminated safety glass
  - 220/60 mm aluminum transom-mullion system
5. natural ventilation inlet with ultra low leakage damper  
wood ventilation grille
6. 600mm motorized sunshade louvers with colored solar panel integrated
7. facade supporting frame:
  - 300 profile steel u beam
  - 75mm square steel tube

# DETAIL 2A | 2B | 2C BALCONY SIDE

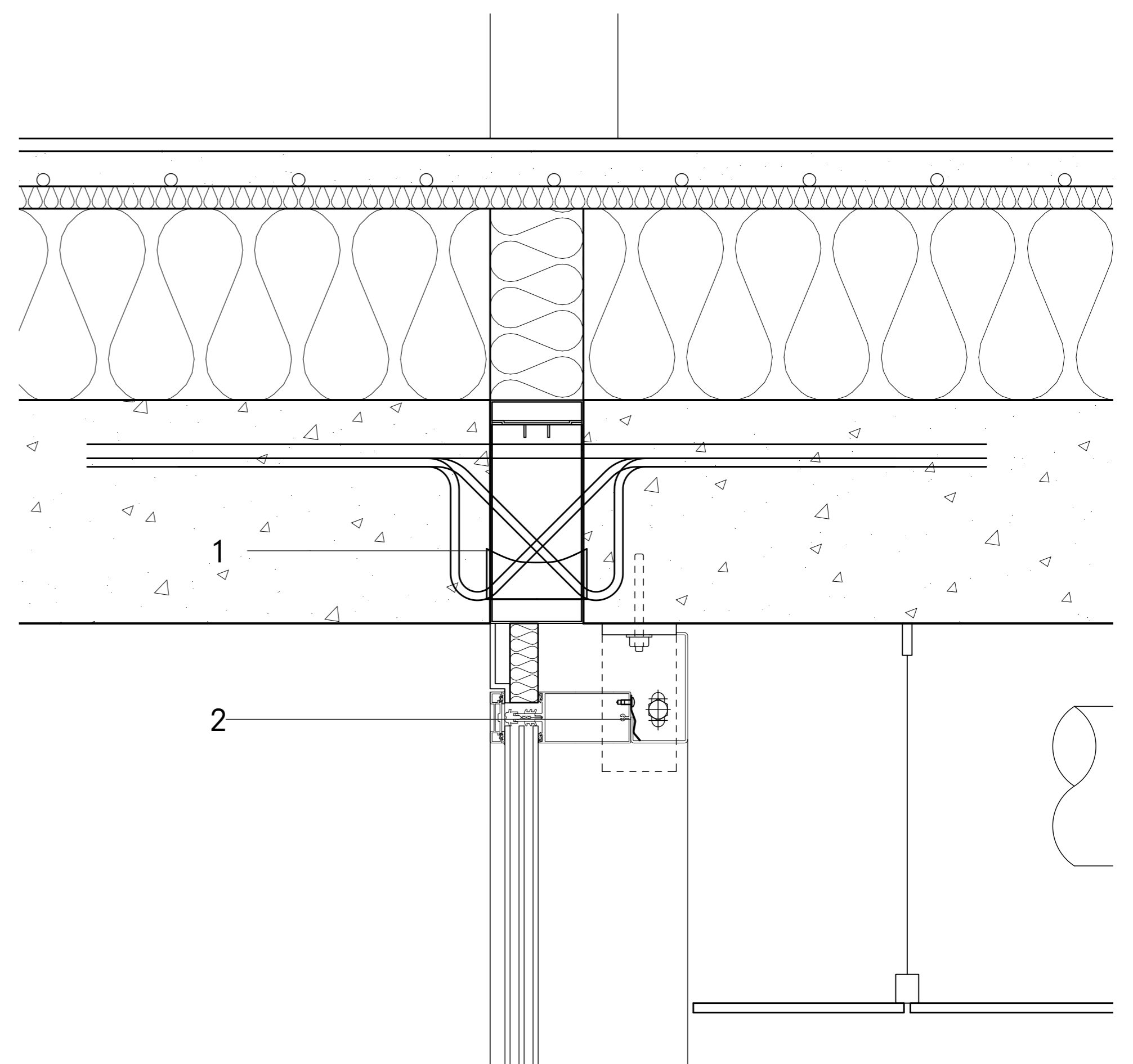
Balcony  
Ground Floor

**1:5**

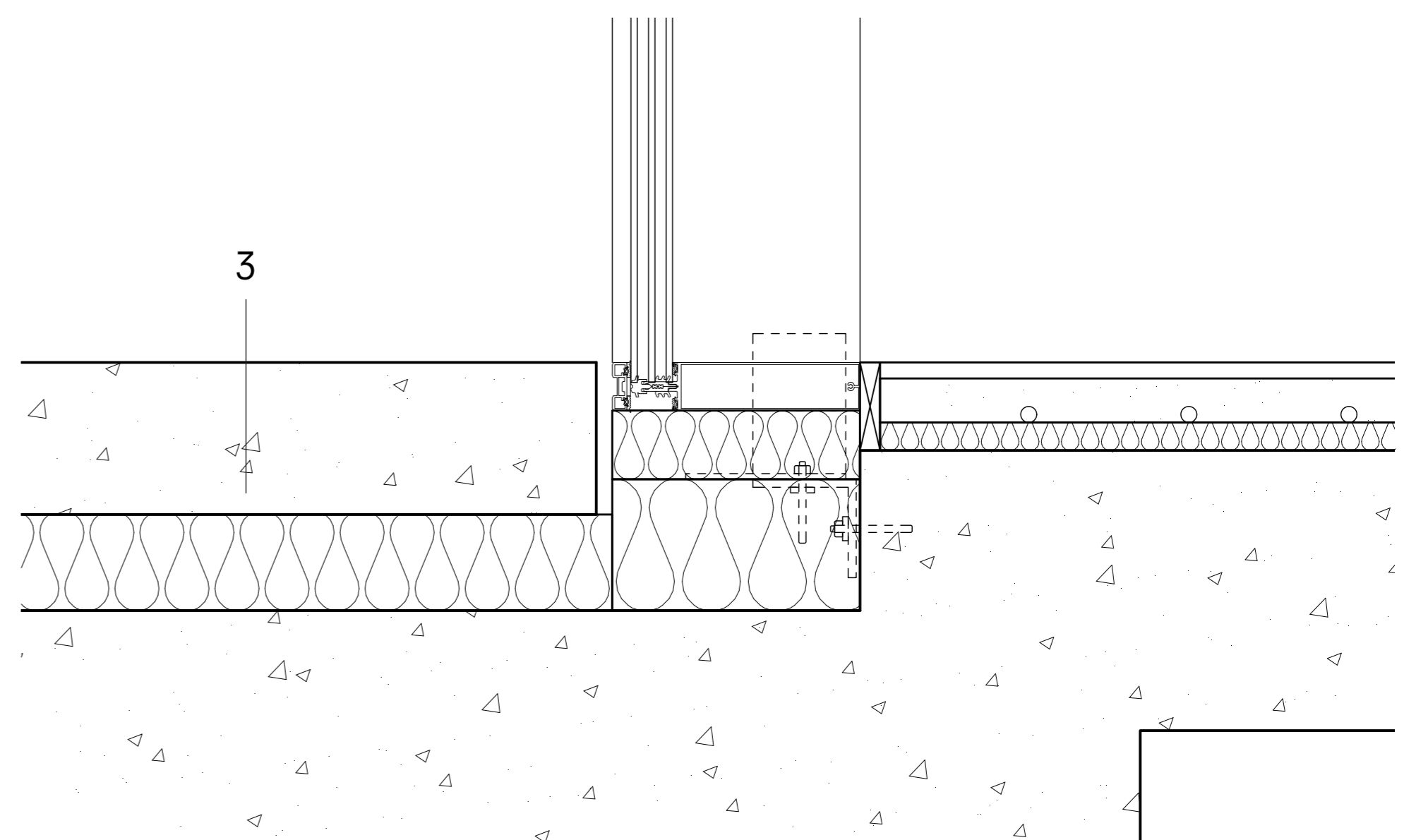
(Scaled 75%)



1. 1200mm cable railing + wooden armrest at 800mm
2. 25mm/25mm coated oak sticks
3. balcony supporting structure:  
250 profile steel u beam  
150 profile steel i beam
4. indoor floor:  
8mm linoleum flooring  
55mm screed with floor heating system + 35mm EPS insulation  
250 mm timber-concrete composite slab



1. concrete to concrete thermal break module
2. ground floor glazing:  
triple glazing: 2 x 4mm laminated safety glass + 14 cavity + 8mm glass + 2 x 4 laminated safety glass  
300/60 mm aluminum transom-mullion system with connections mounted to ceiling
3. balcony supporting structure:  
250 profile steel u beam  
150 profile steel i beam
4. 120mm PIR rigid insulation + 200 concrete slab





# ELEVATION SECTION ROOM PLAN

Materialization  
Facade  
Climate  
Room Layout

1:50

(Scaled 75%)

