

& LIVE & LIVE &

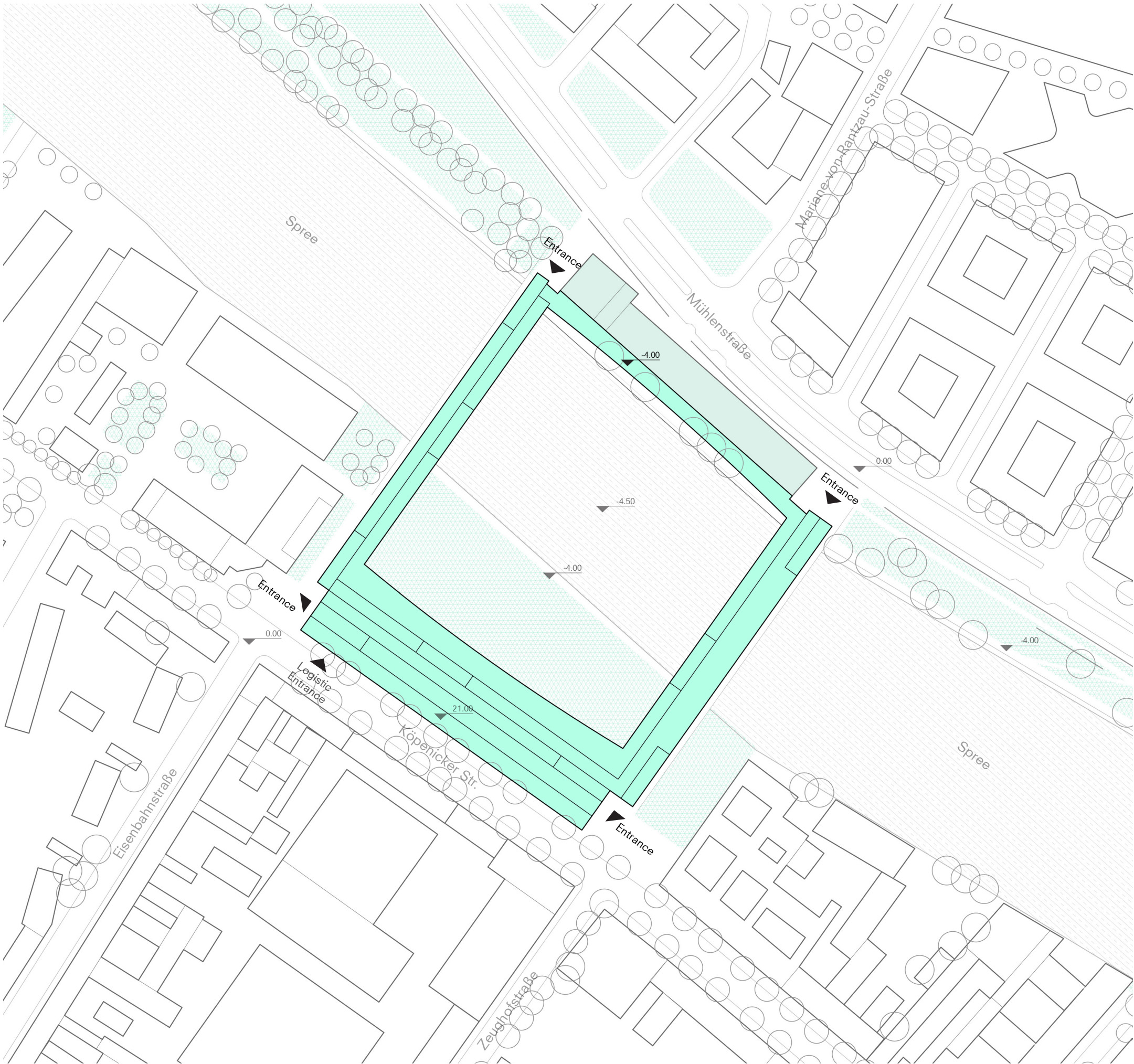
**DRAWING SET**

Academy of Alternative Music

Site Plan

level of detail  
printed scale

1:2000  
1:2000

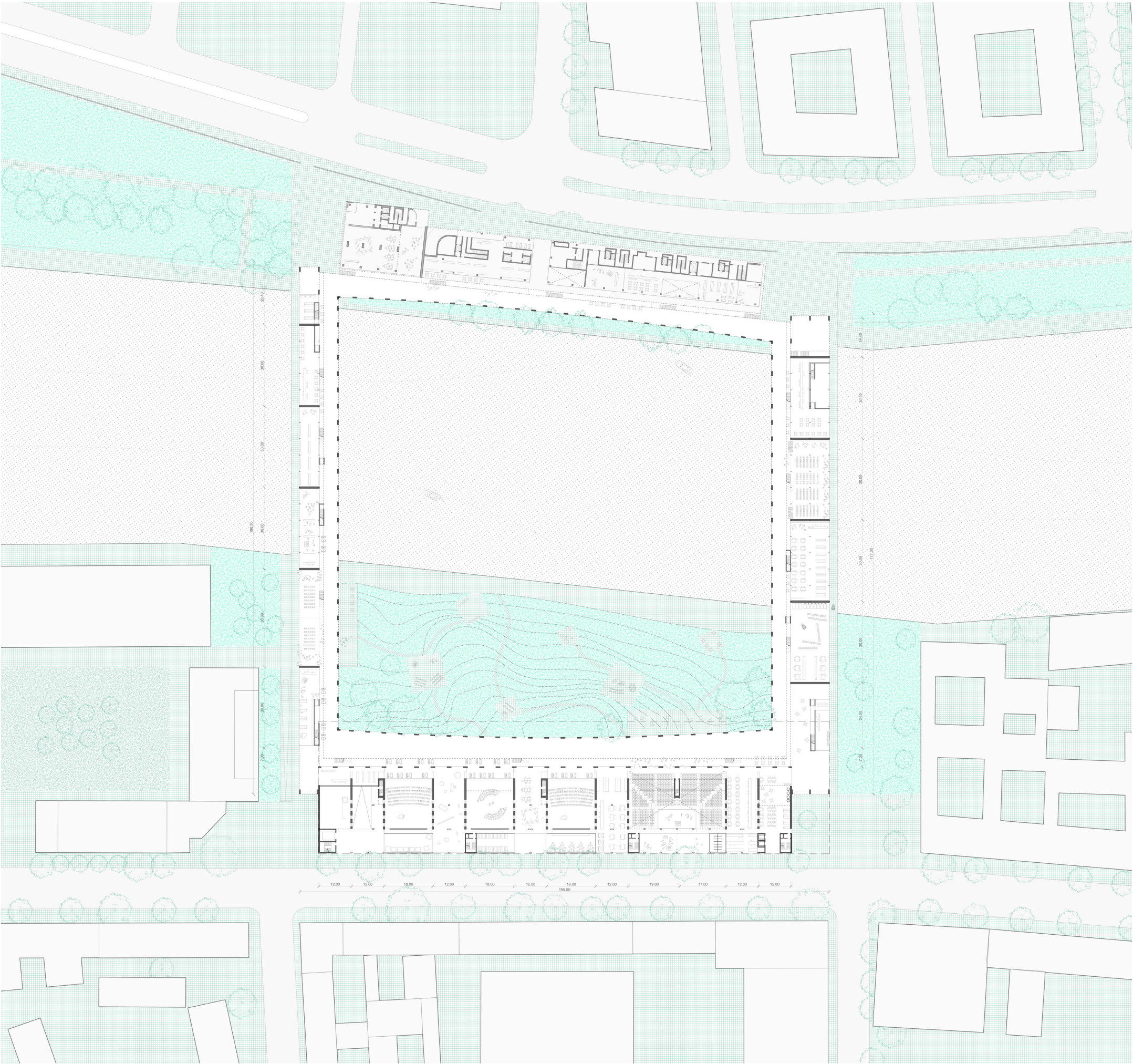




Urban Implementation Plan



level of detail      1:500  
printed scale      1:1500



Live & Live - Academy of Alternative Music  
Jingwen Gan  
Bodies & Building Berlin  
Graduation Studio 2023-2024

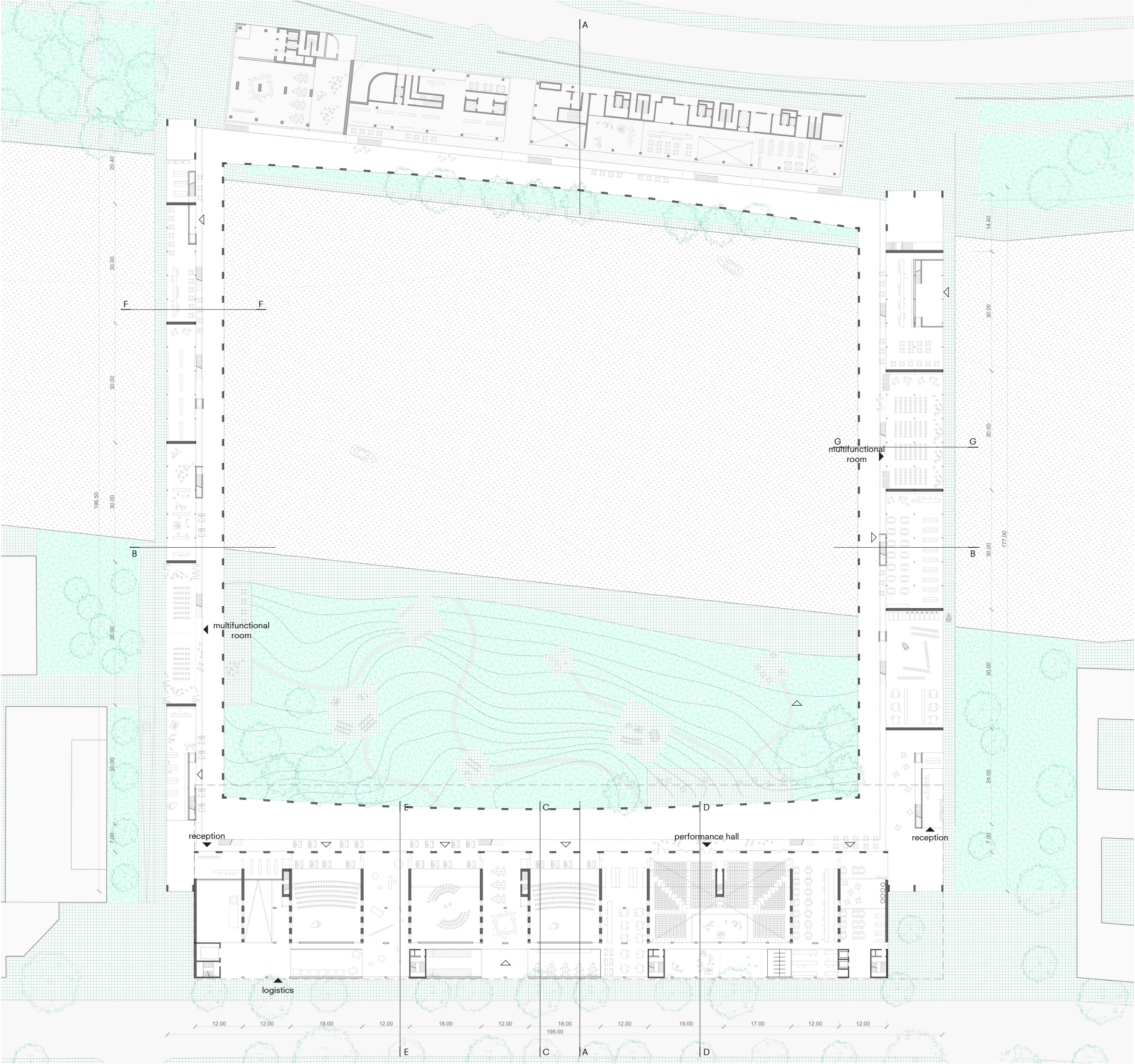


Floor Plan

Ground Floor            ±0.00 m

level of detail            1:200

printed scale            1:1000

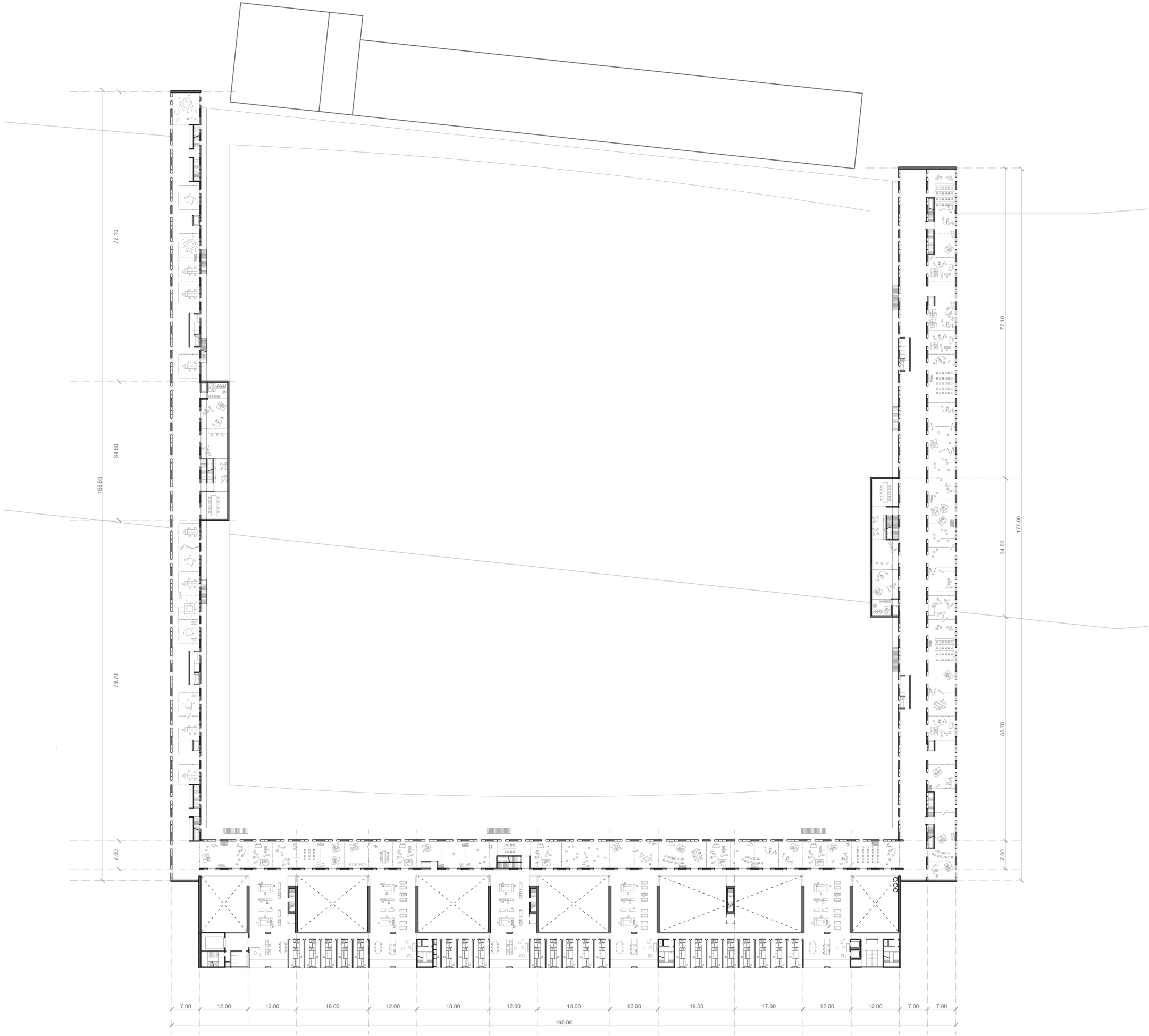


Live & Live - Academy of Alternative Music  
Jingwen Gan  
Bodies & Building Berlin  
Graduation Studio 2023-2024



Floor Plan

First Floor +5.00 m  
level of detail 1:200  
printed scale 1:1000



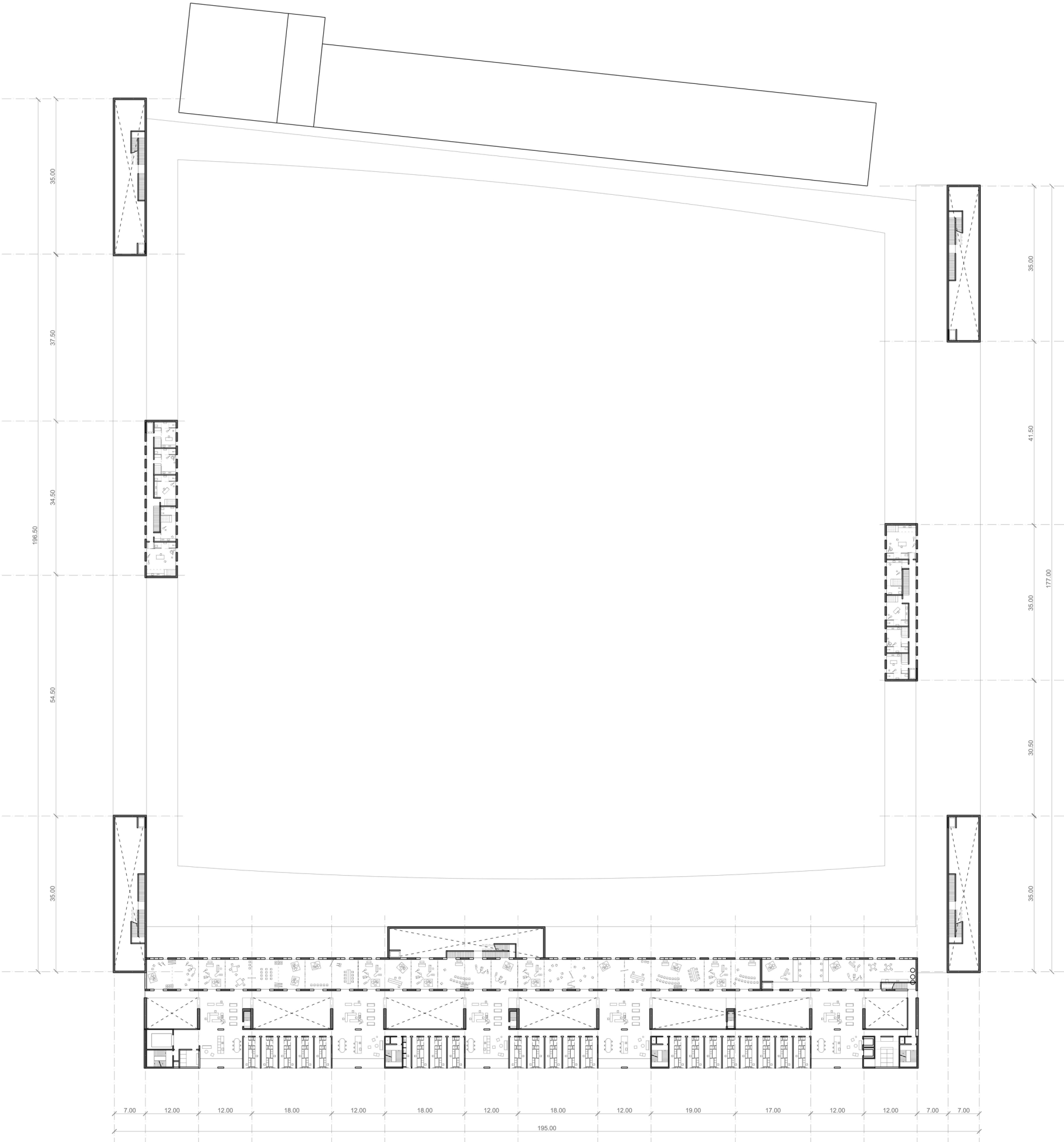
Live & Live - Academy of Alternative Music  
Jingwen Gan  
Bodies & Building Berlin  
Graduation Studio 2023-2024

Floor Plan

Second Floor                    +9.00 m

level of detail                1:200

printed scale                1:1000

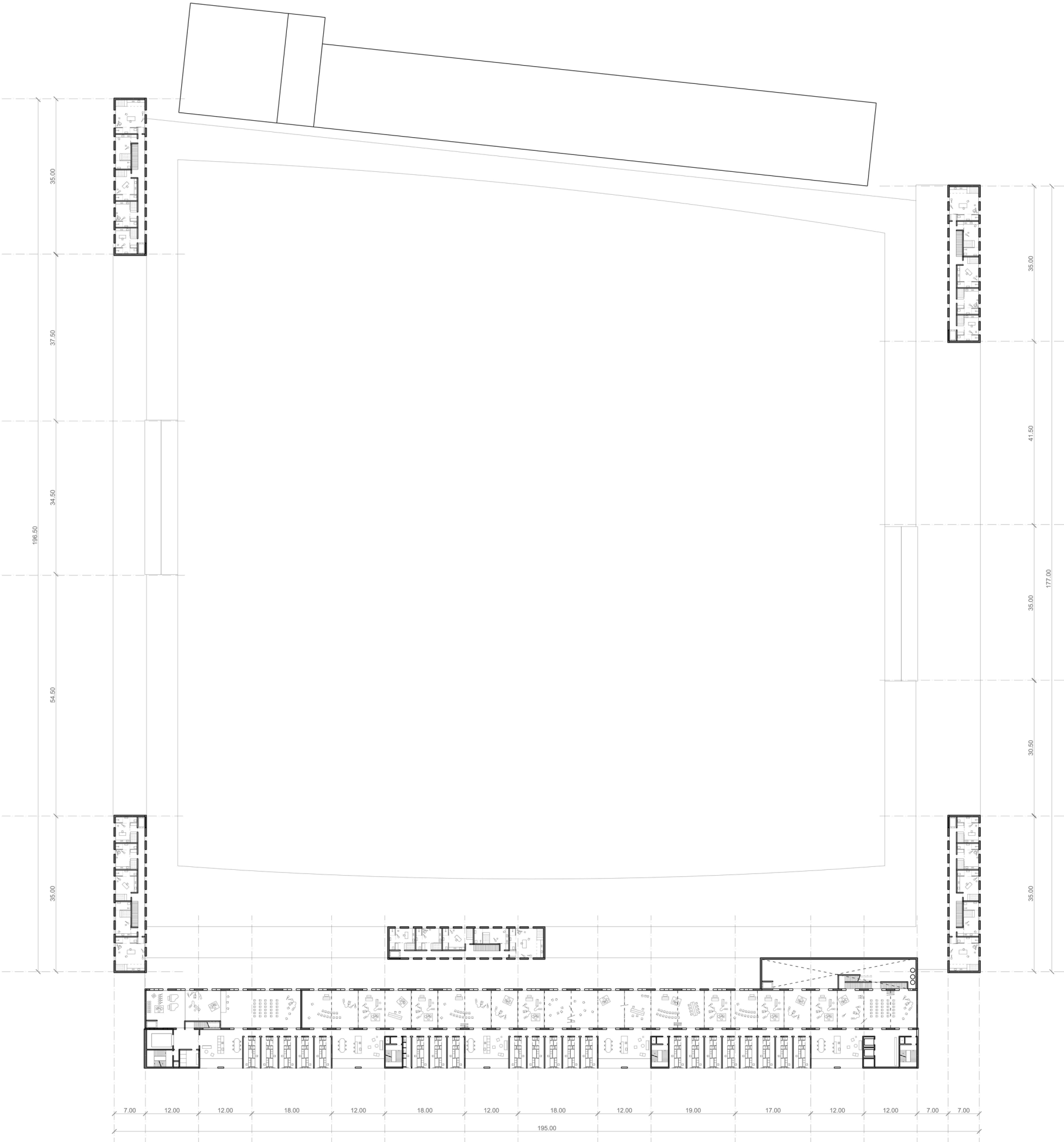


Live & Live - Academy of Alternative Music  
Jingwen Gan  
Bodies & Building Berlin  
Graduation Studio 2023-2024



Floor Plan

Third Floor +13.00 m  
level of detail 1:200  
printed scale 1:1000



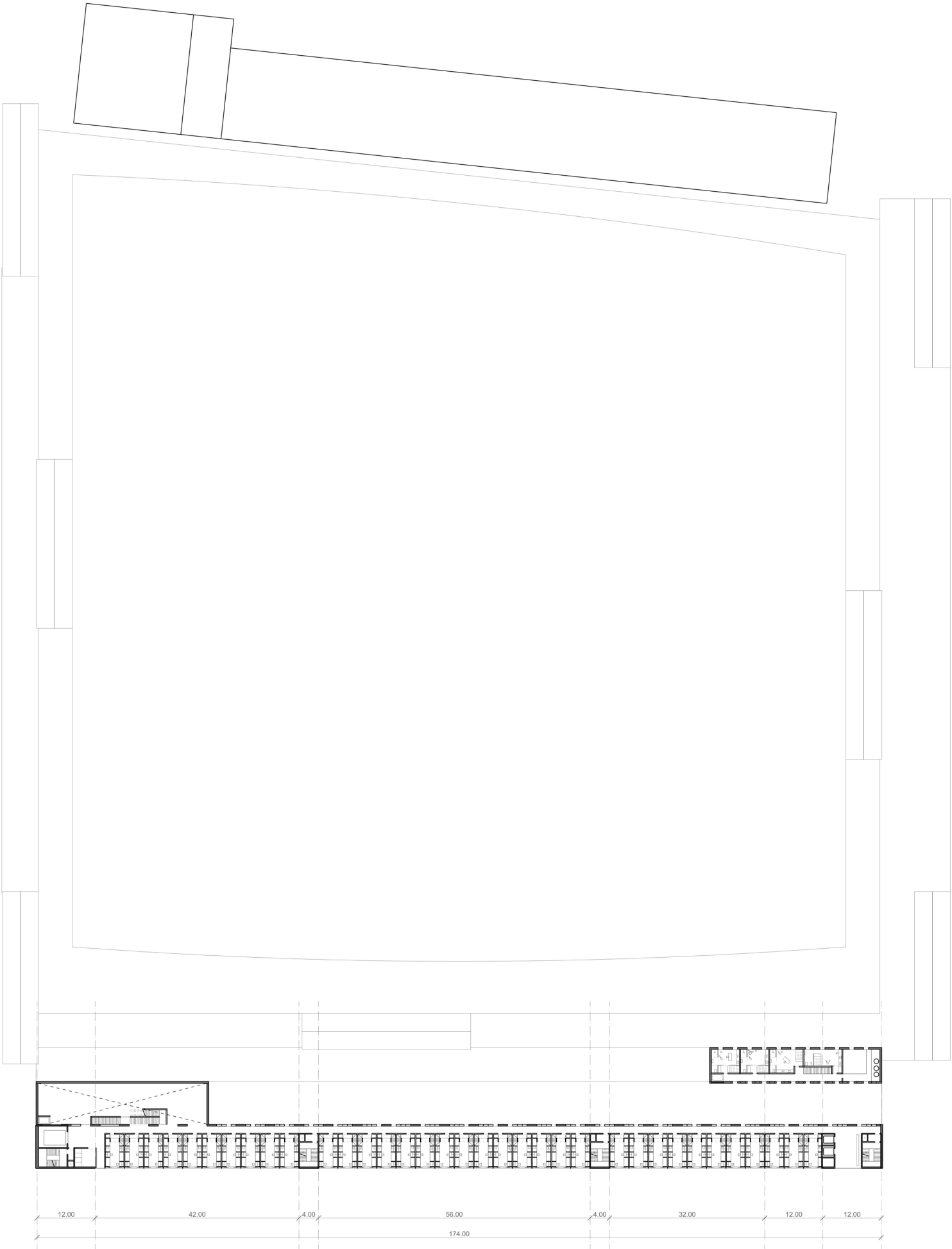
Live & Live - Academy of Alternative Music  
Jingwen Gan  
Bodies & Building Berlin  
Graduation Studio 2023-2024

Floor Plan

Fourth Floor                    +17.00 m

level of detail                1:200

printed scale                 1:1000



Live & Live - Academy of Alternative Music  
Jingwen Gan  
Bodies & Building Berlin  
Graduation Studio 2023-2024

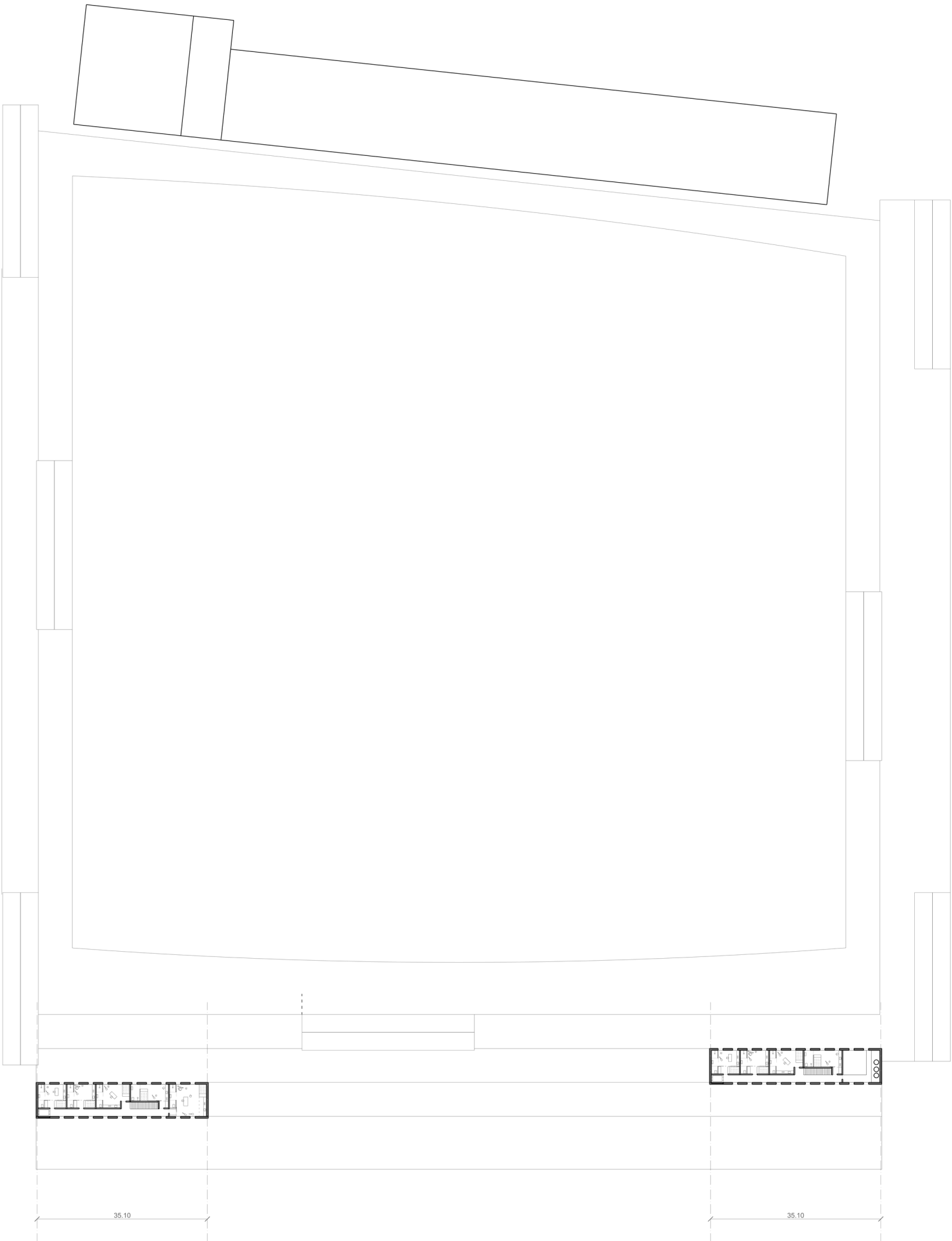


Floor Plan

Fifth Floor                    +21.00 m

level of detail                1:200

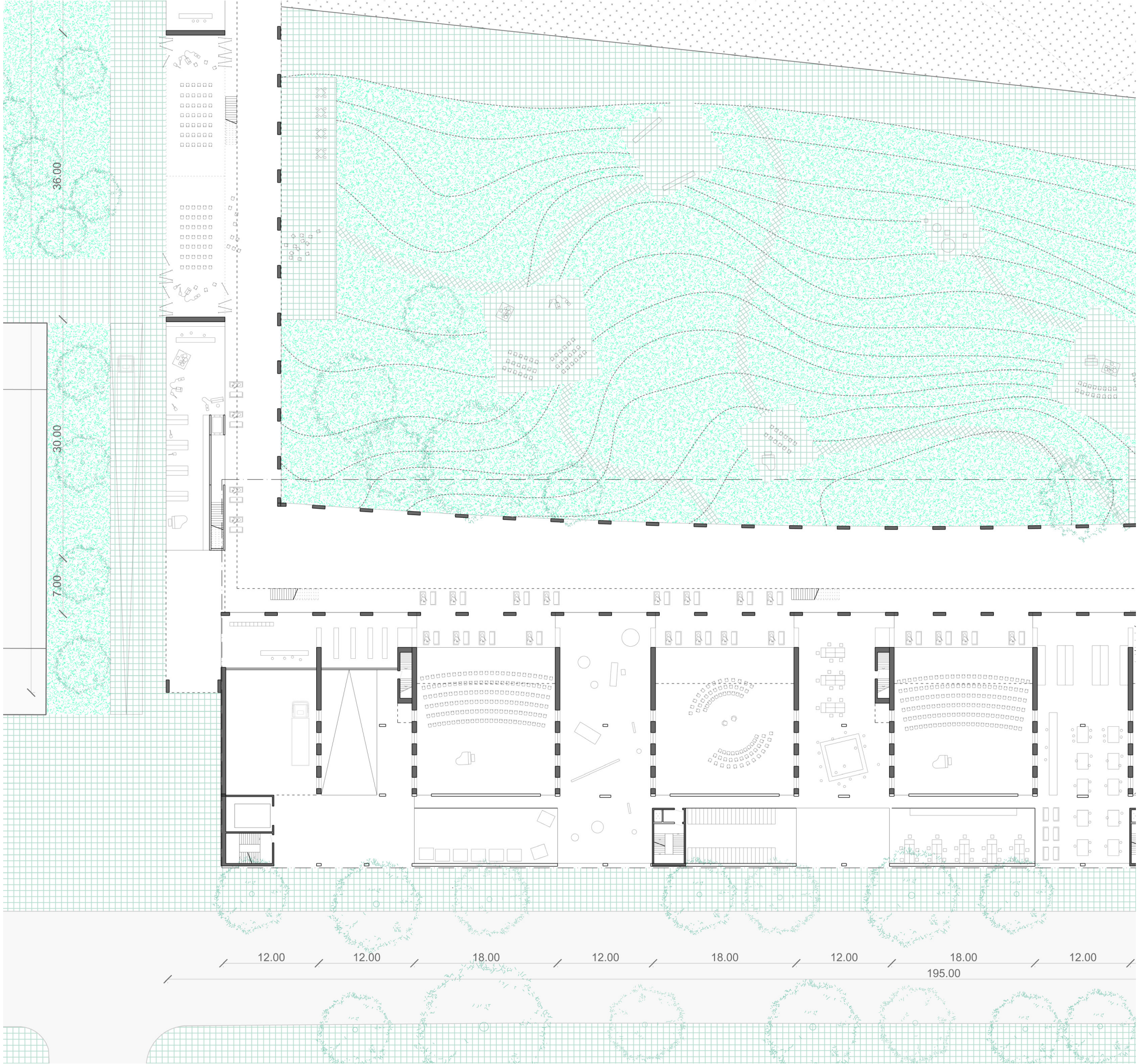
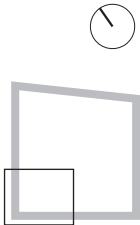
printed scale                 1:1000





Floor Plan Fragment

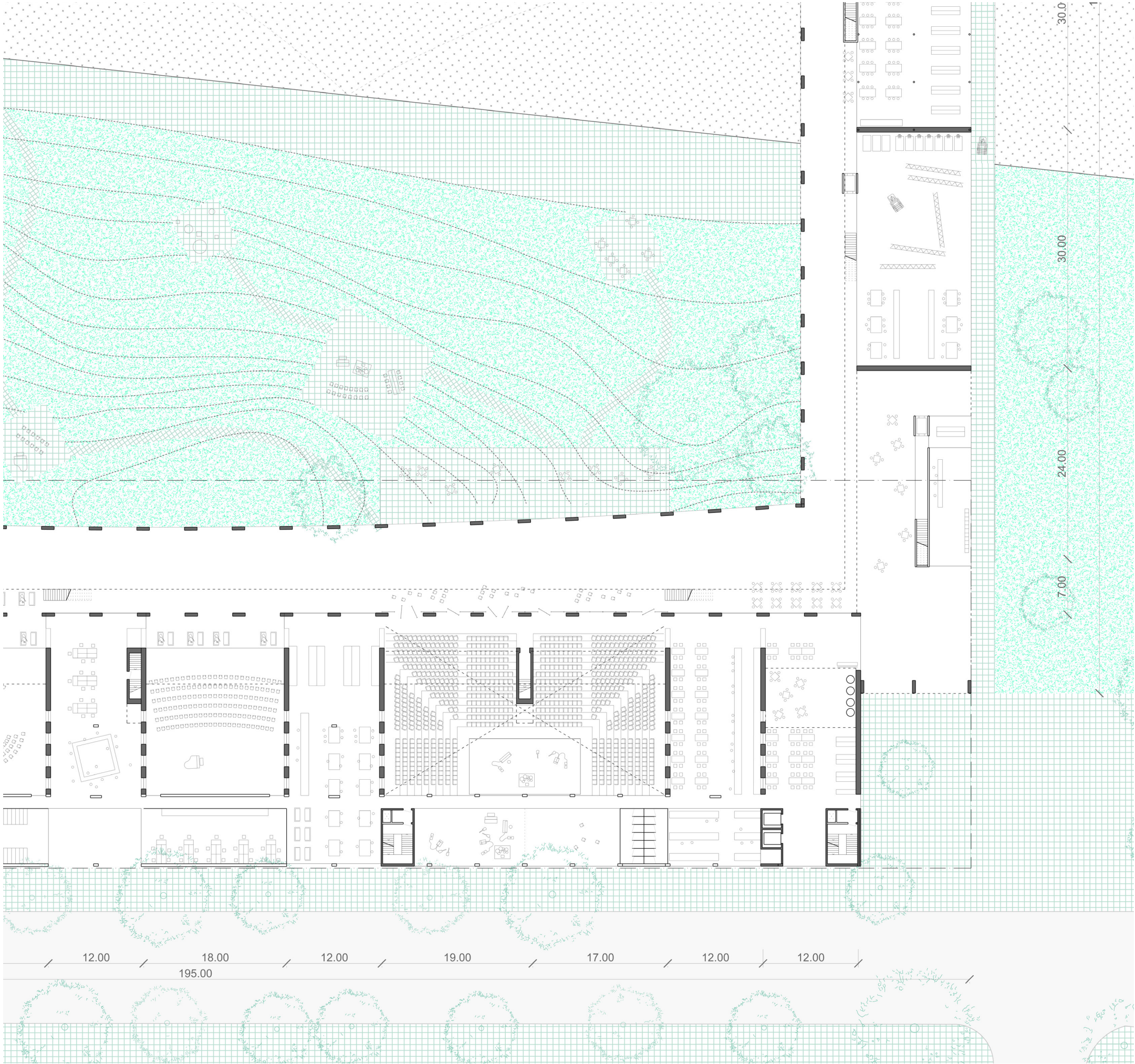
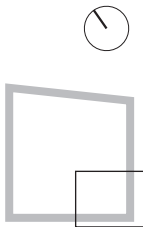
Ground Floor 0.00 m  
level of detail 1:200  
printed scale 1:500





Floor Plan Fragment

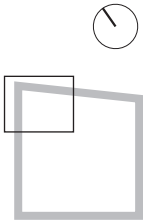
Ground Floor 0.00 m  
level of detail 1:200  
printed scale 1:500





Floor Plan Fragment

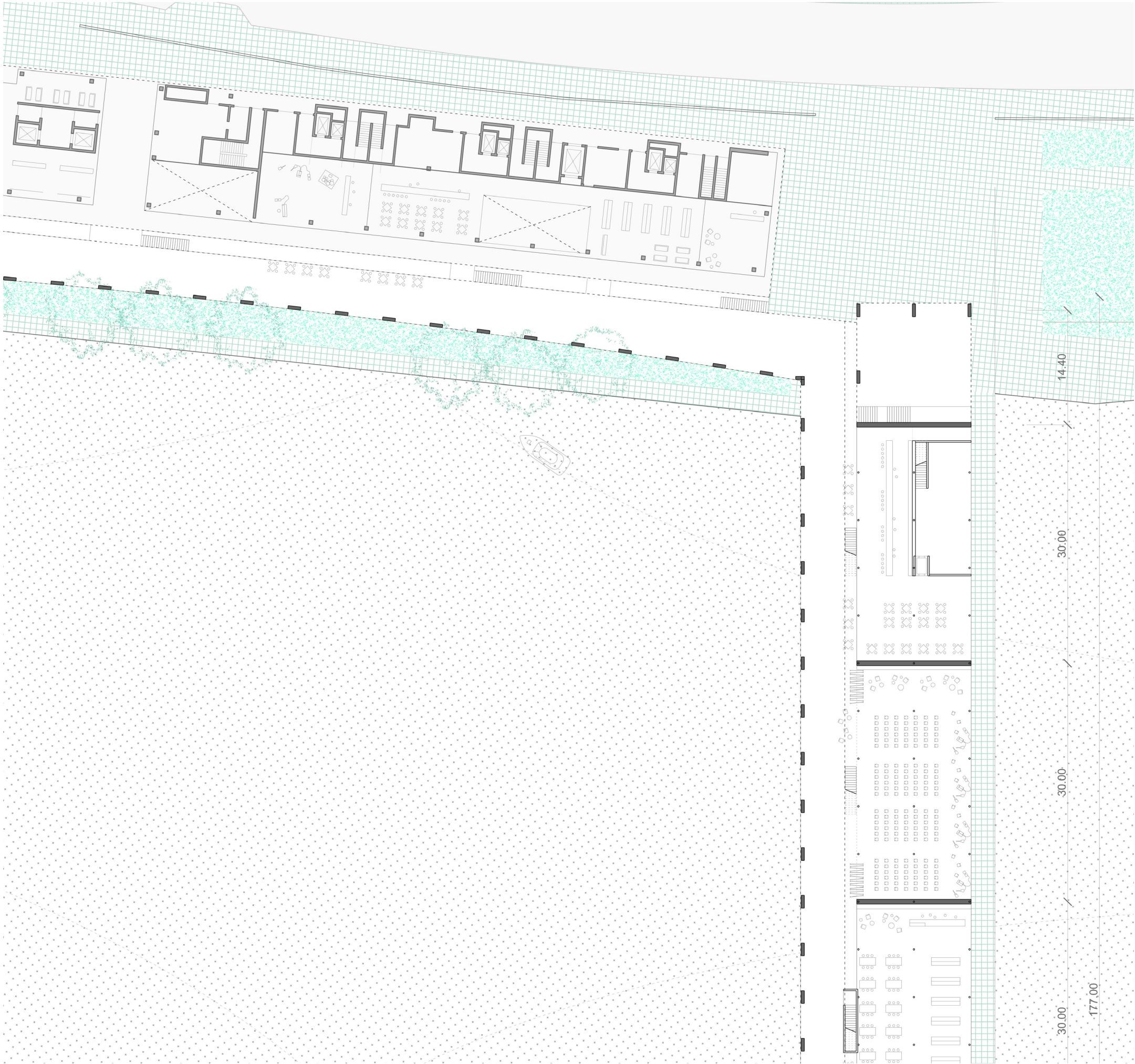
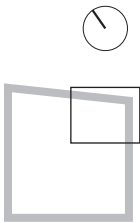
Ground Floor 0.00 m  
level of detail 1:200  
printed scale 1:500





Floor Plan Fragment

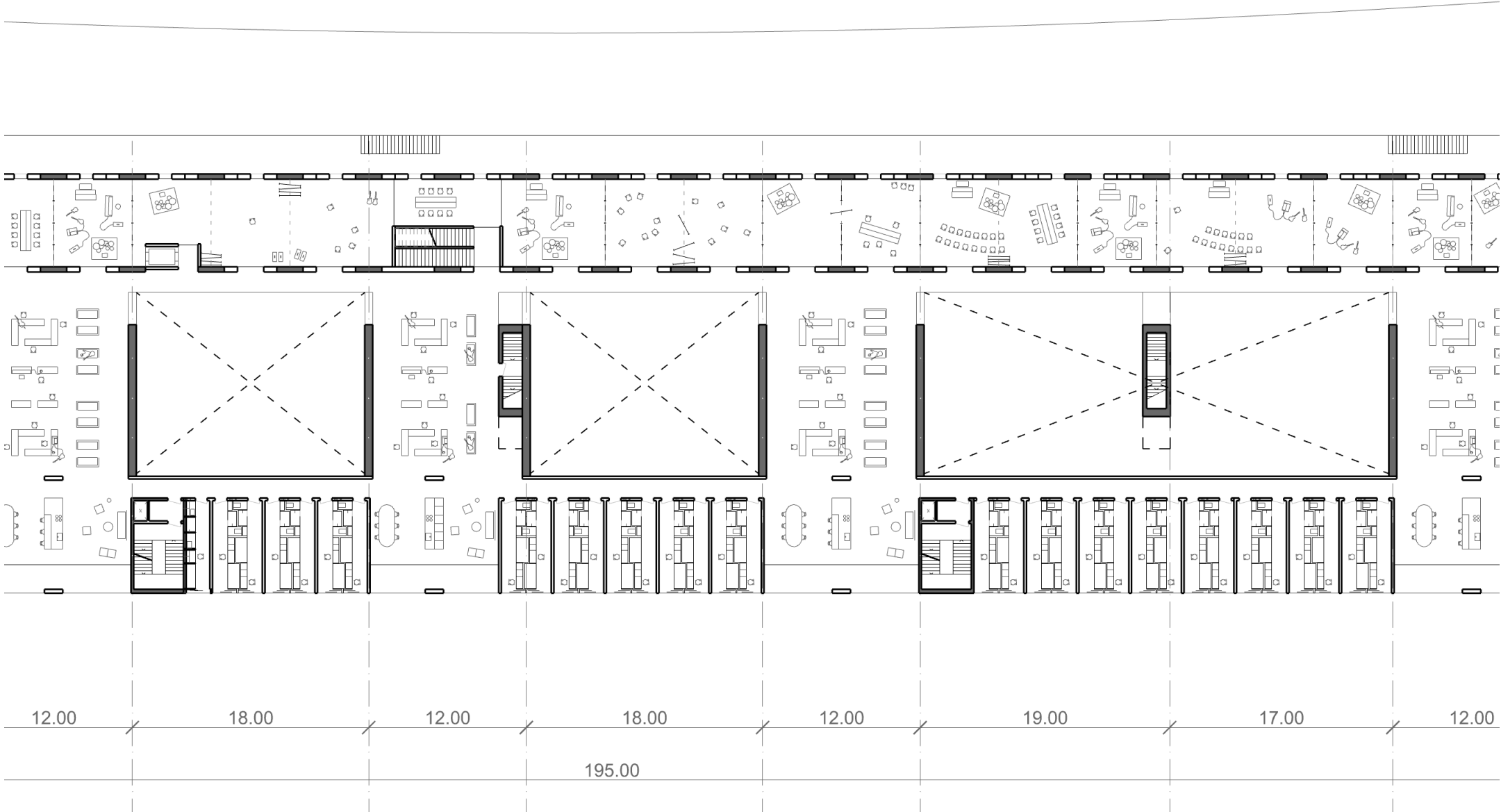
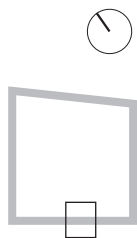
Ground Floor 0.00 m  
level of detail 1:200  
printed scale 1:500





Floor Plan Fragment

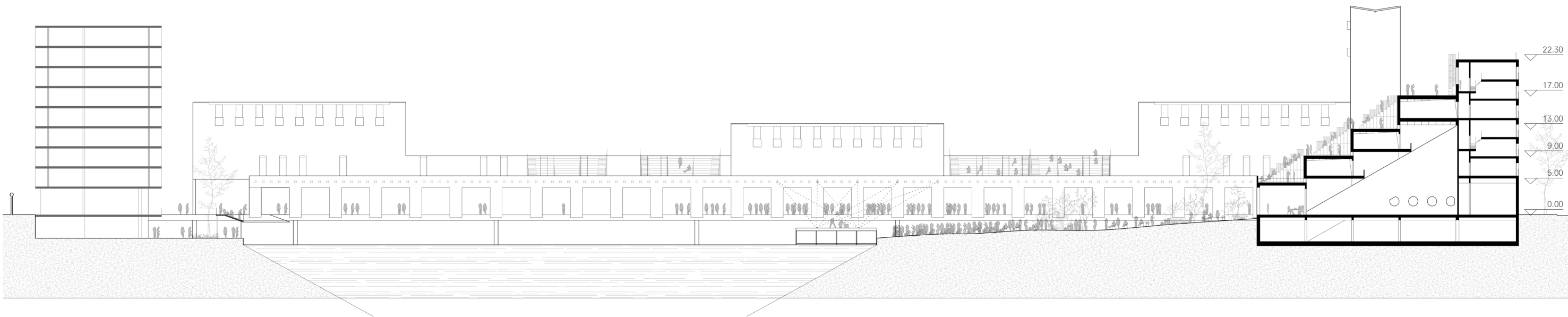
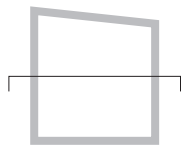
First Floor +5.00 m  
level of detail 1:200  
printed scale 1:200



Section

Site Section A

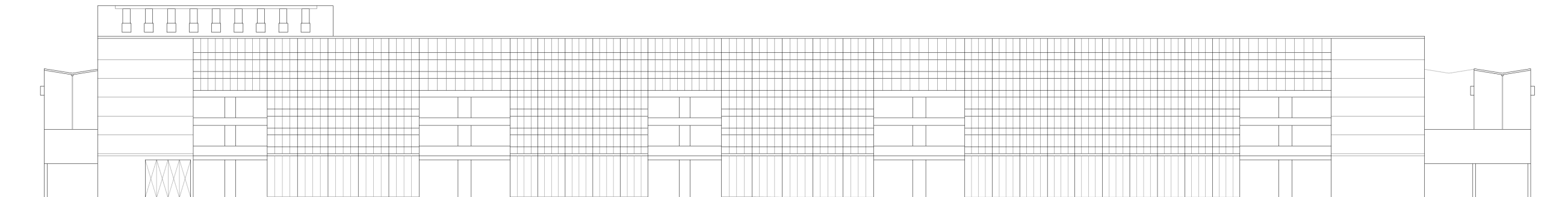
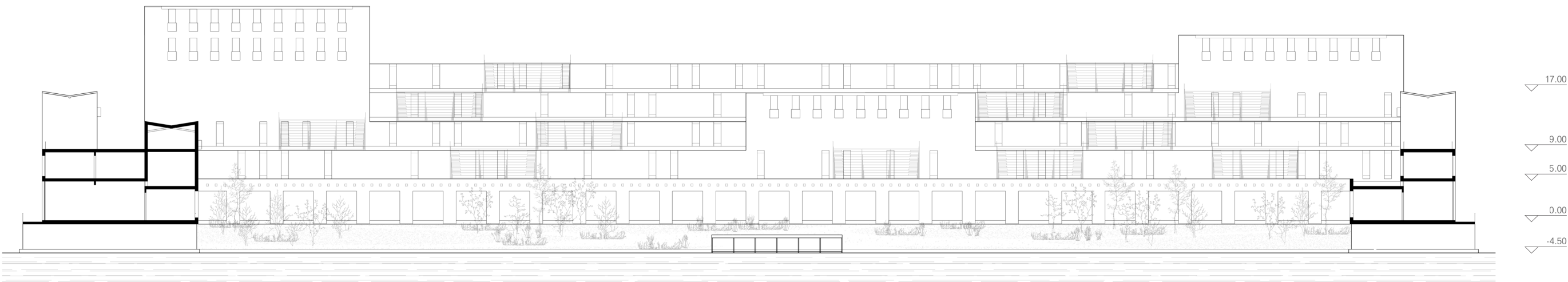
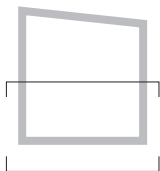
level of detail 1:200  
printed scale 1:600



Section, Elevation

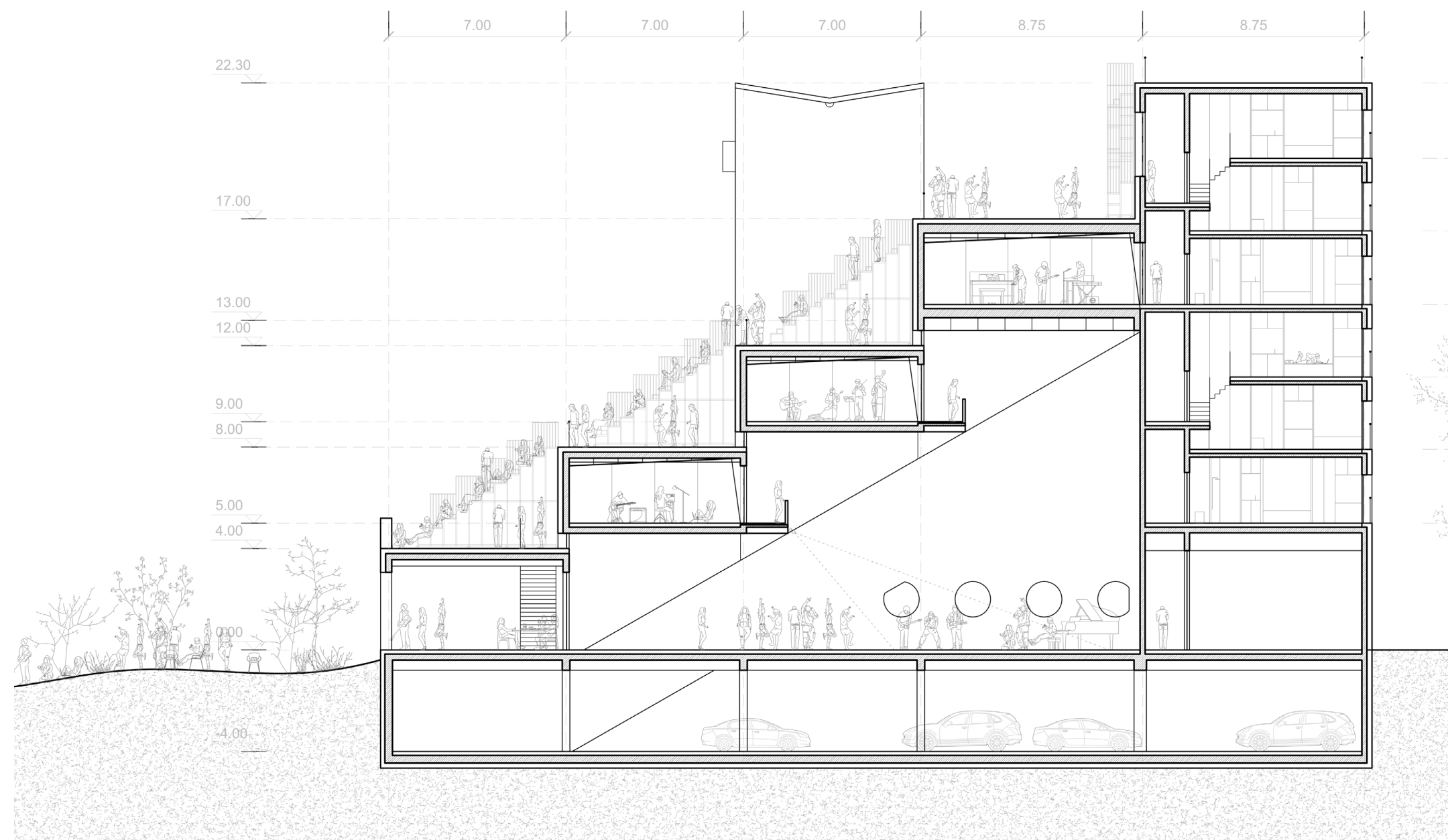
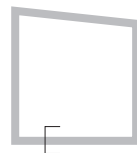
Site Section B  
Southwest Elevation

level of detail      1:200  
printed scale        1:600



## Section C

1:100  
1:200



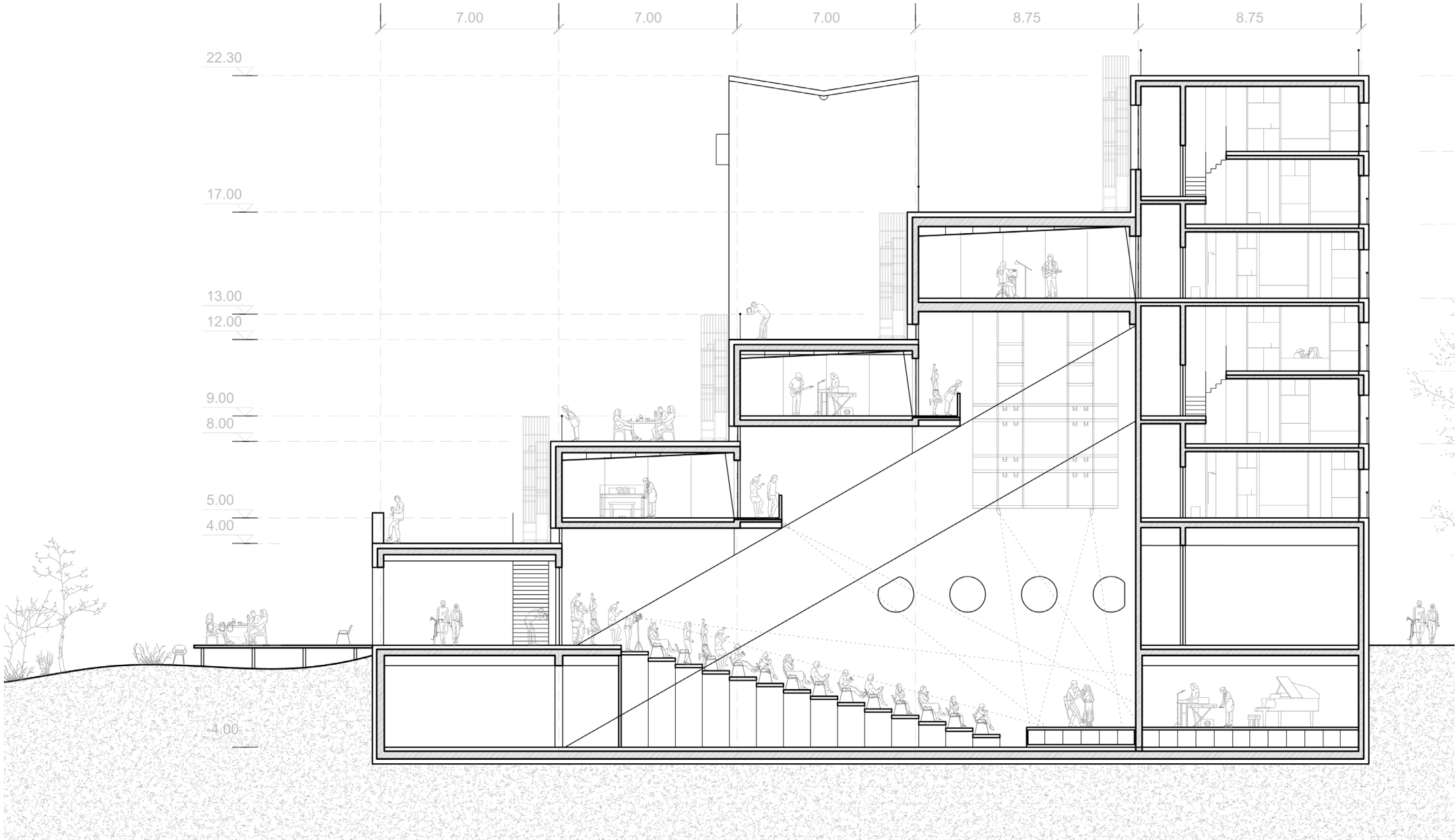
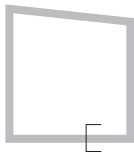


Section

Section D

level of detail  
printed scale

1:100  
1:200

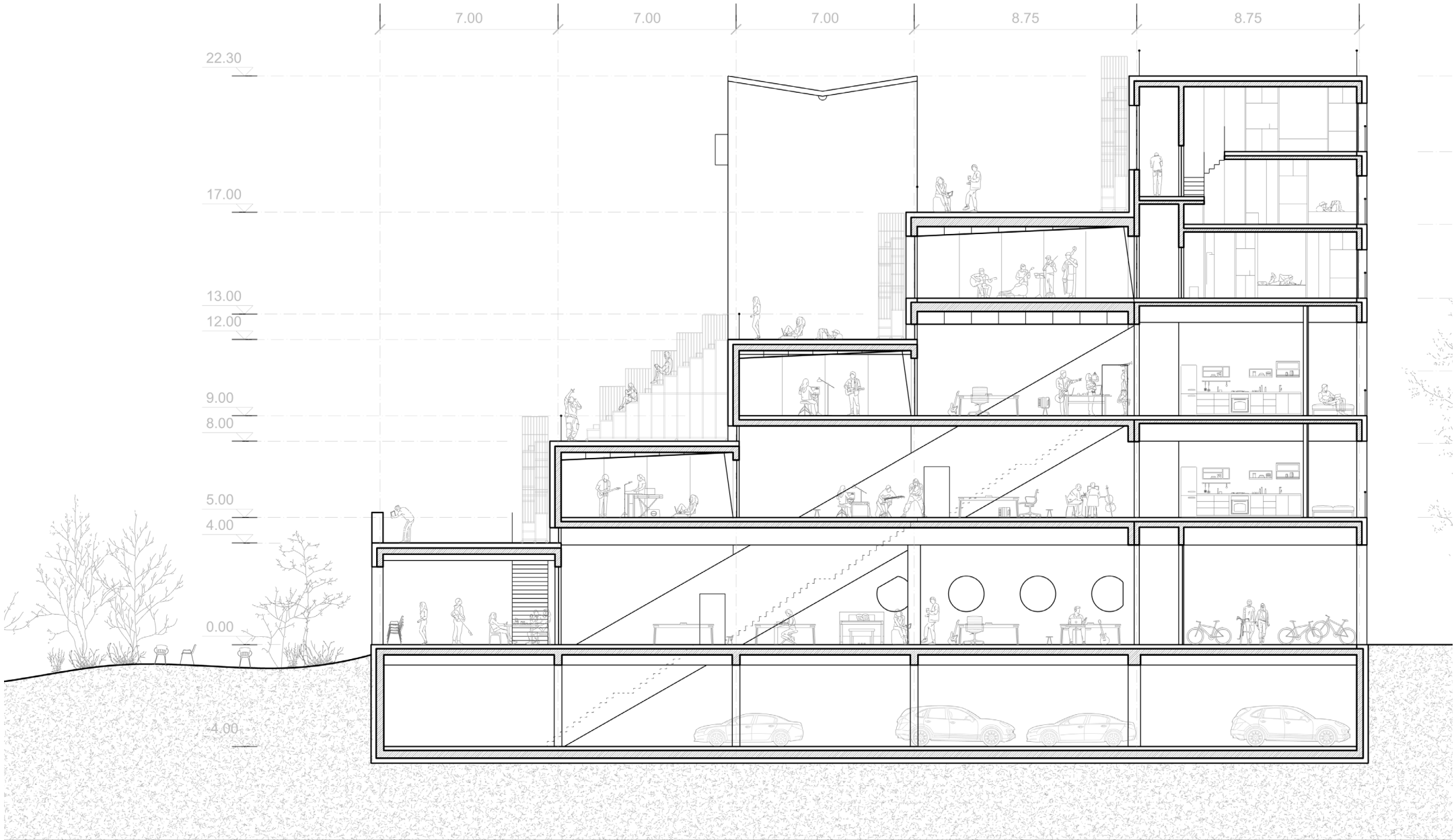
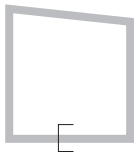


Section

Section E

level of detail  
printed scale

1:100  
1:200



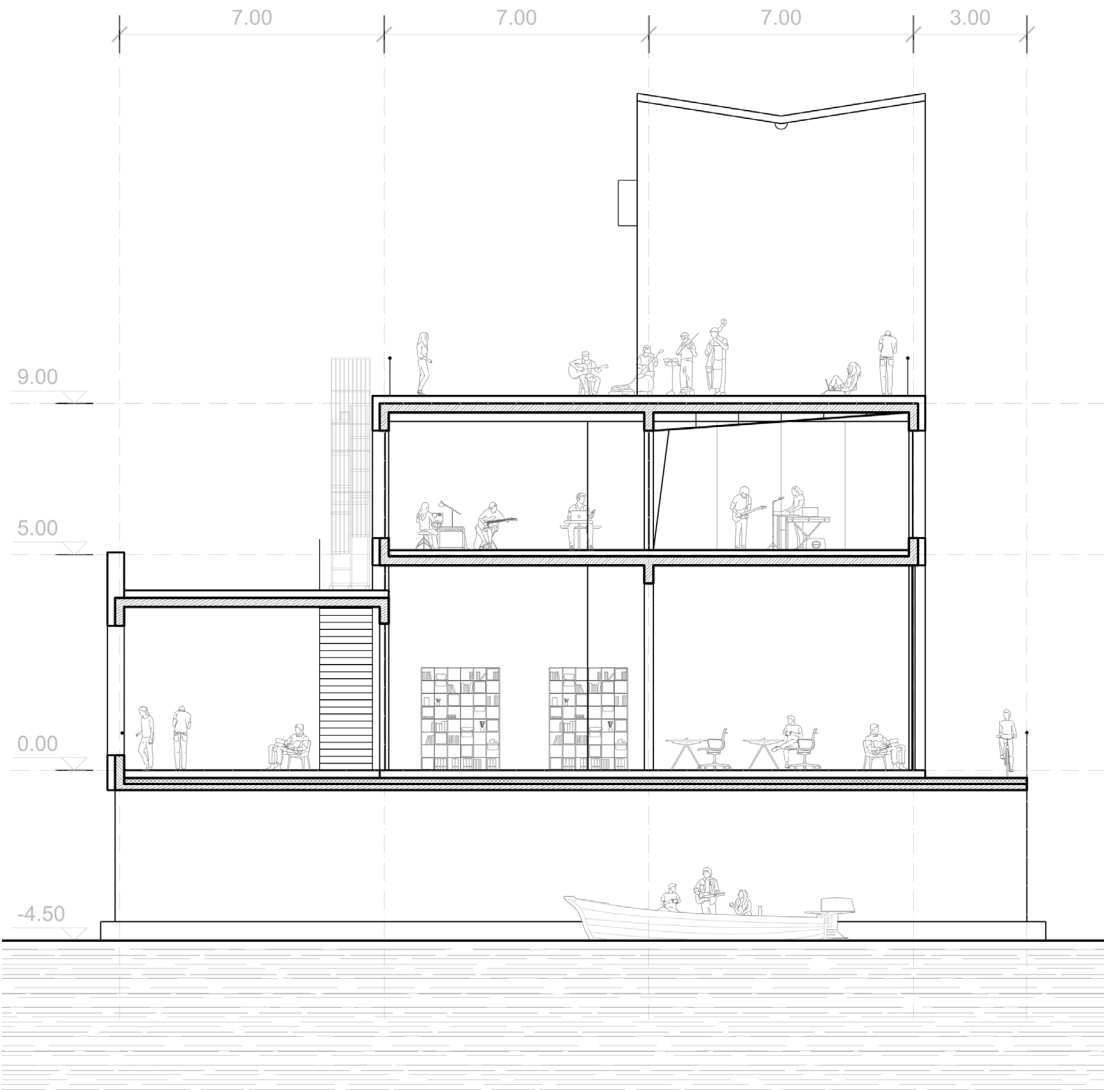
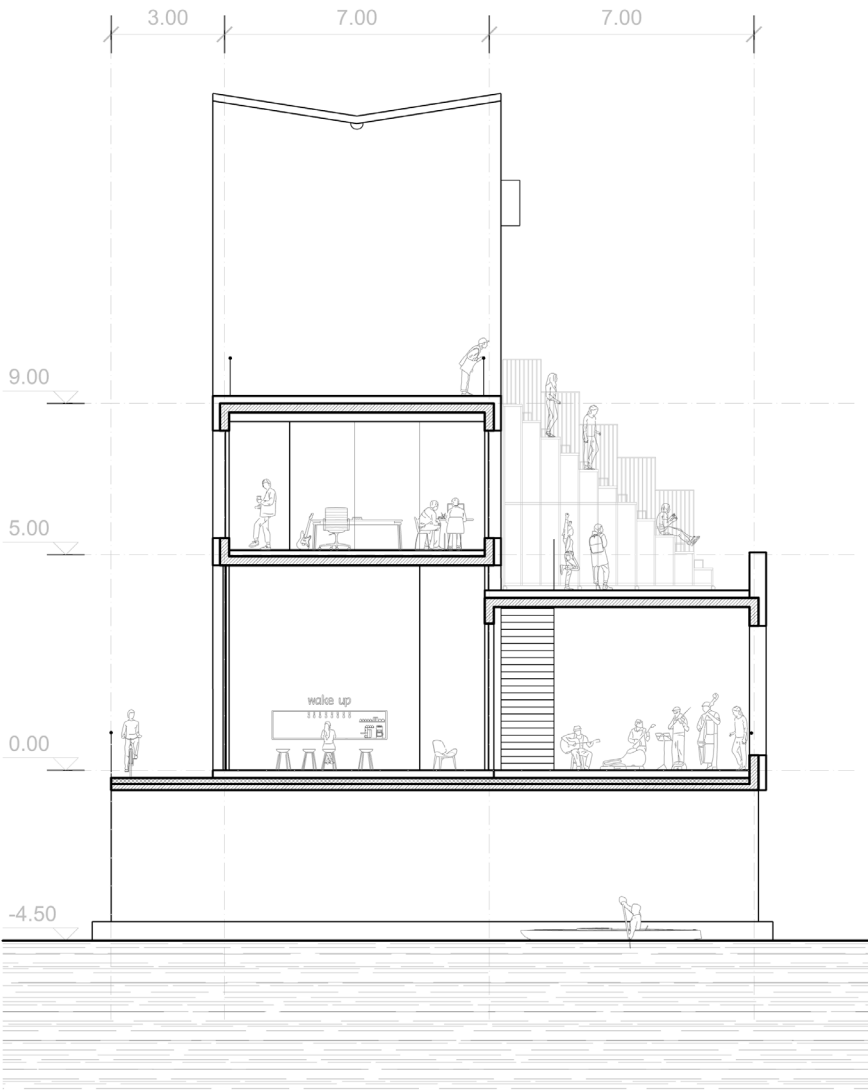
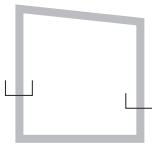


Section

Section F  
Section G

level of detail  
printed scale

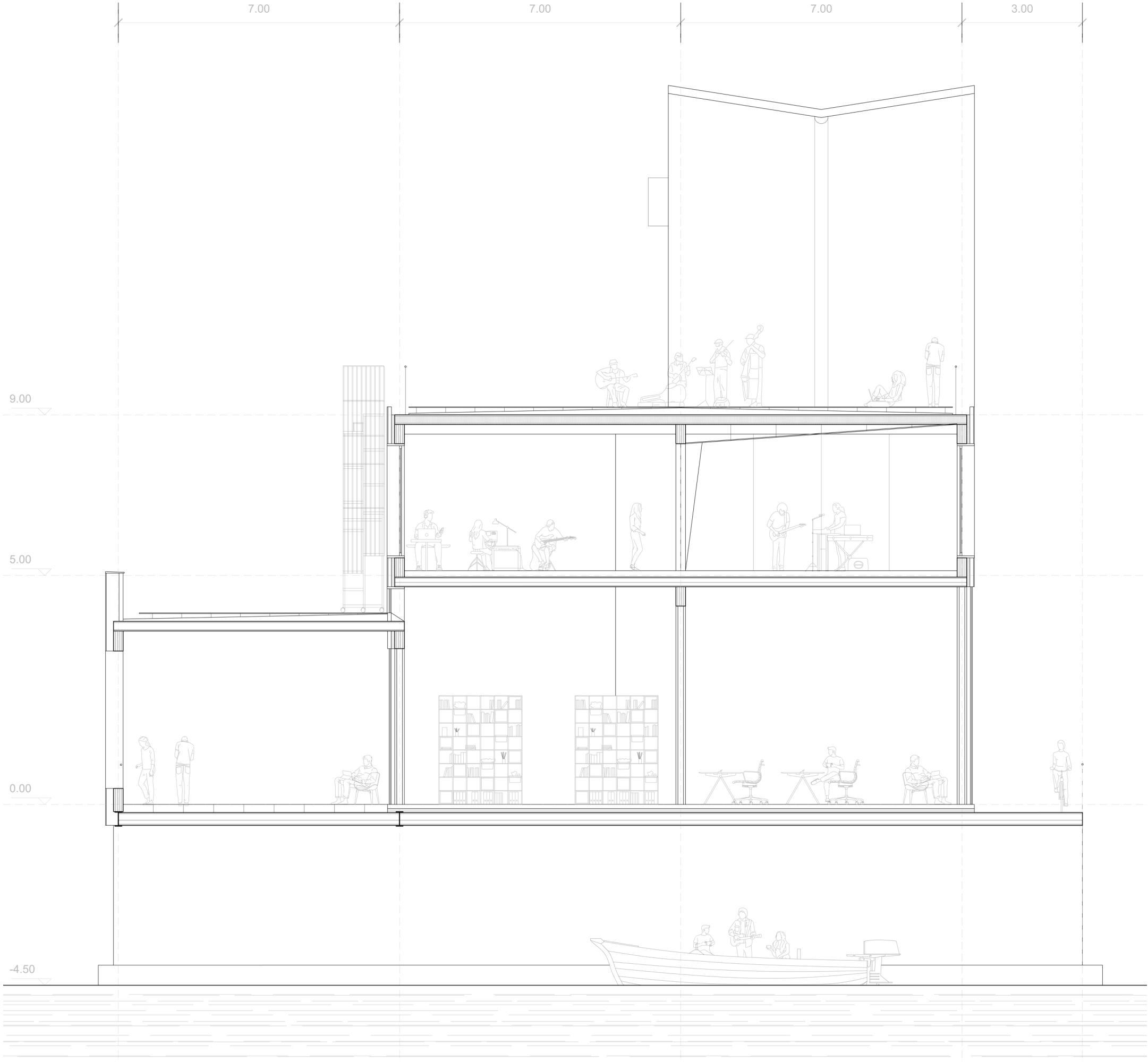
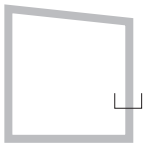
1:100  
1:200



Section Fragment

Section G

level of detail 1:50  
printed scale 1:100



Live & Live - Academy of Alternative Music  
Jingwen Gan  
Bodies & Building Berlin  
Graduation Studio 2023-2024



Envelope Fragment

Section C

level of detail 1:20  
printed scale 1:20

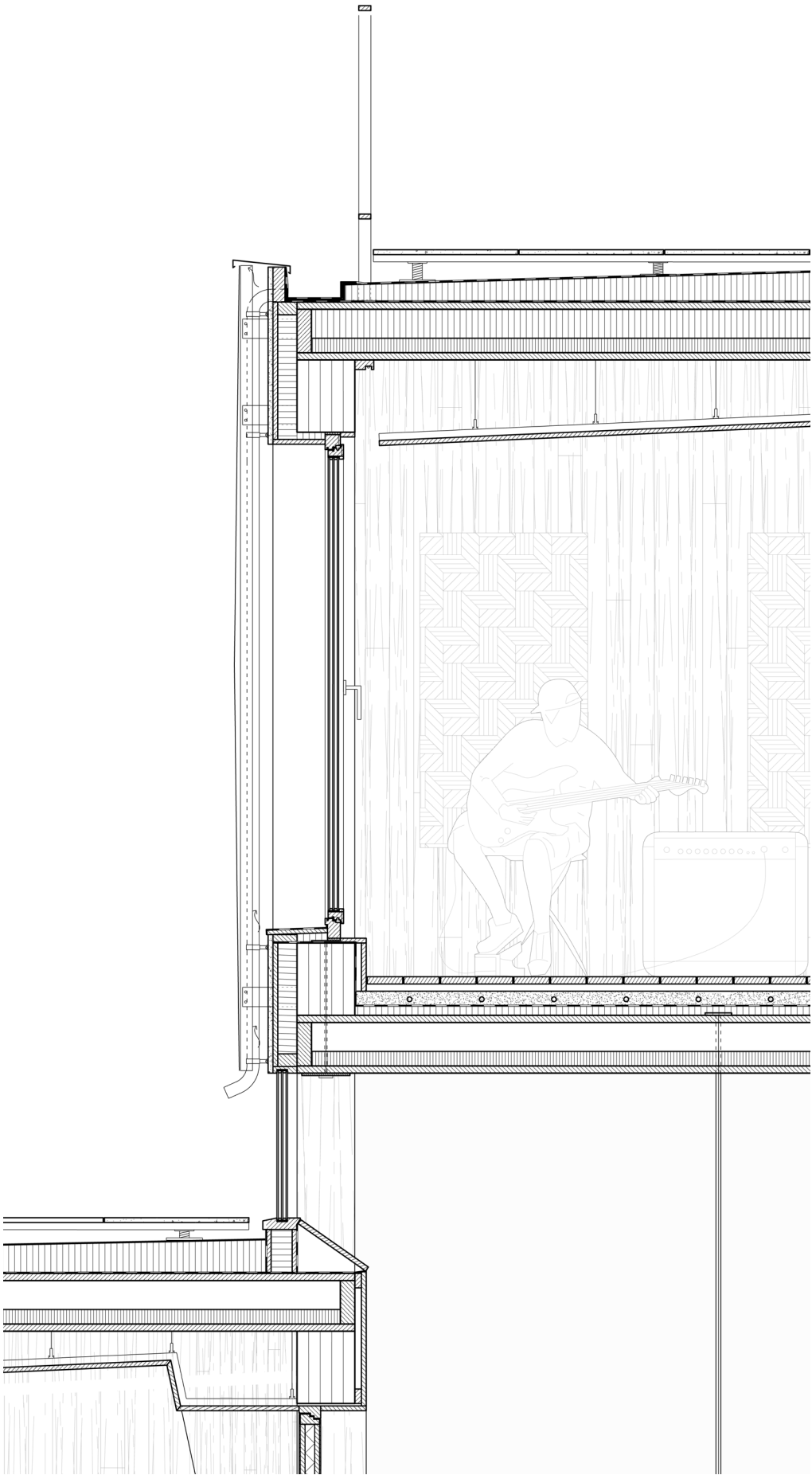


Exterior wall construction  
(from inside to outside)

Glulam truss	240mm
Insulation	80mm
Plywood board	20mm
Plaster	20mm
Cavity	140mm
Facade cladding carrier	
Crossbroke steel sheet	

Accessible roof construction  
(from inside to outside)

Lignatur timber box element with insulation and acoustic insulation	240mm
Damp proof membrane	2mm
2% prefab slope insulation	
water proof membrane	2mm
Pedestal bearings	
Substructure	40mm
Fiber cement panel	20mm



Envelope Fragment

Section C

level of detail 1:20  
printed scale 1:20

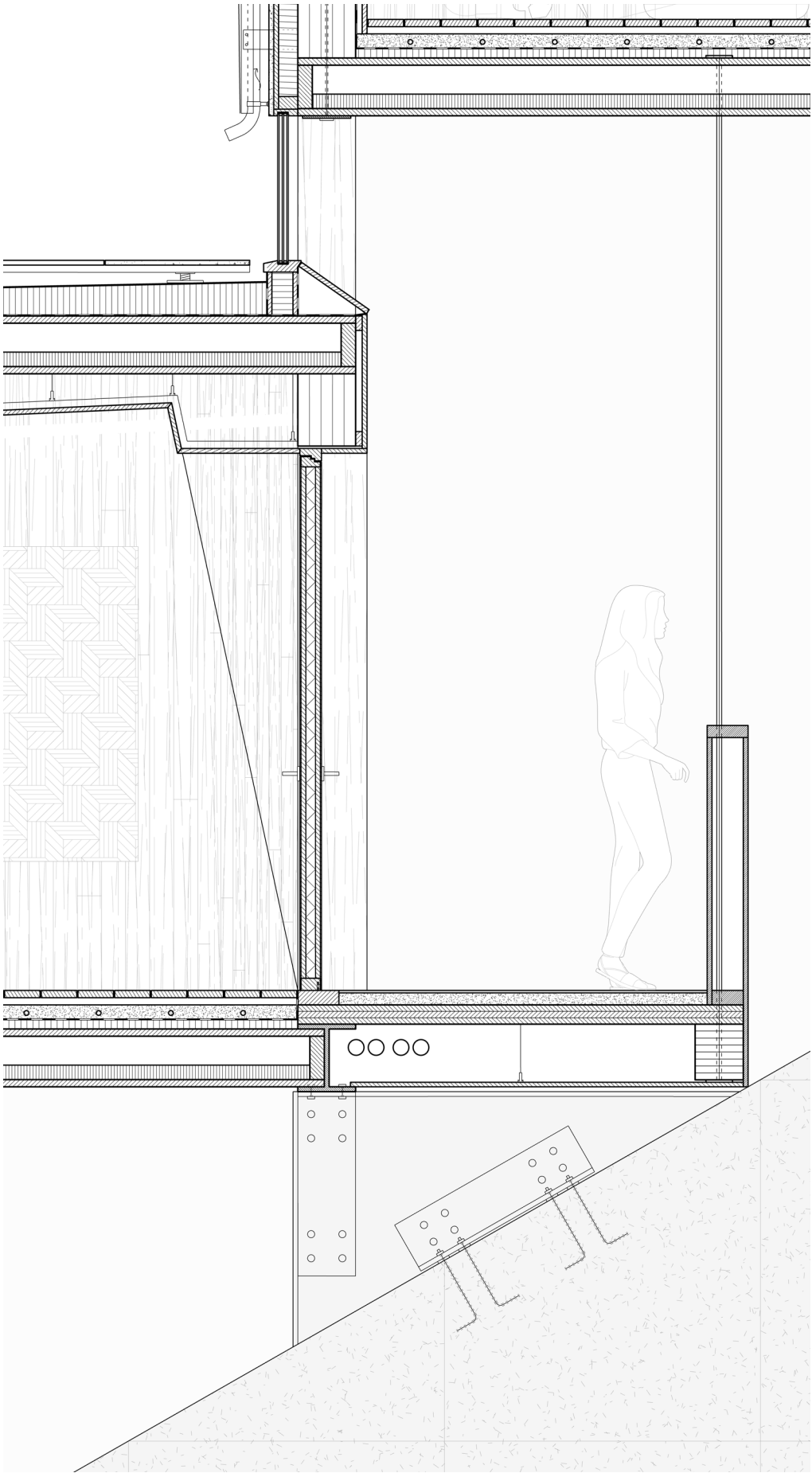


Exterior wall construction  
(from inside to outside)

Glulam truss	240mm
Insulation	80mm
Plywood board	20mm
Plaster	20mm
Cavity	140mm
Facade cladding carrier	
Crossbroke steel sheet	

Floor construction  
(from bottom to top)

Lignatur timber box element with acoustic insulation	240mm
Insulation	20mm
Damp proof membrane	2mm
Heated screed	60mm
Substructure	20mm
Parquet floor	20mm





# Construction Detail

Roof Terrace Gutter

level of detail 1:5  
printed scale 1:5



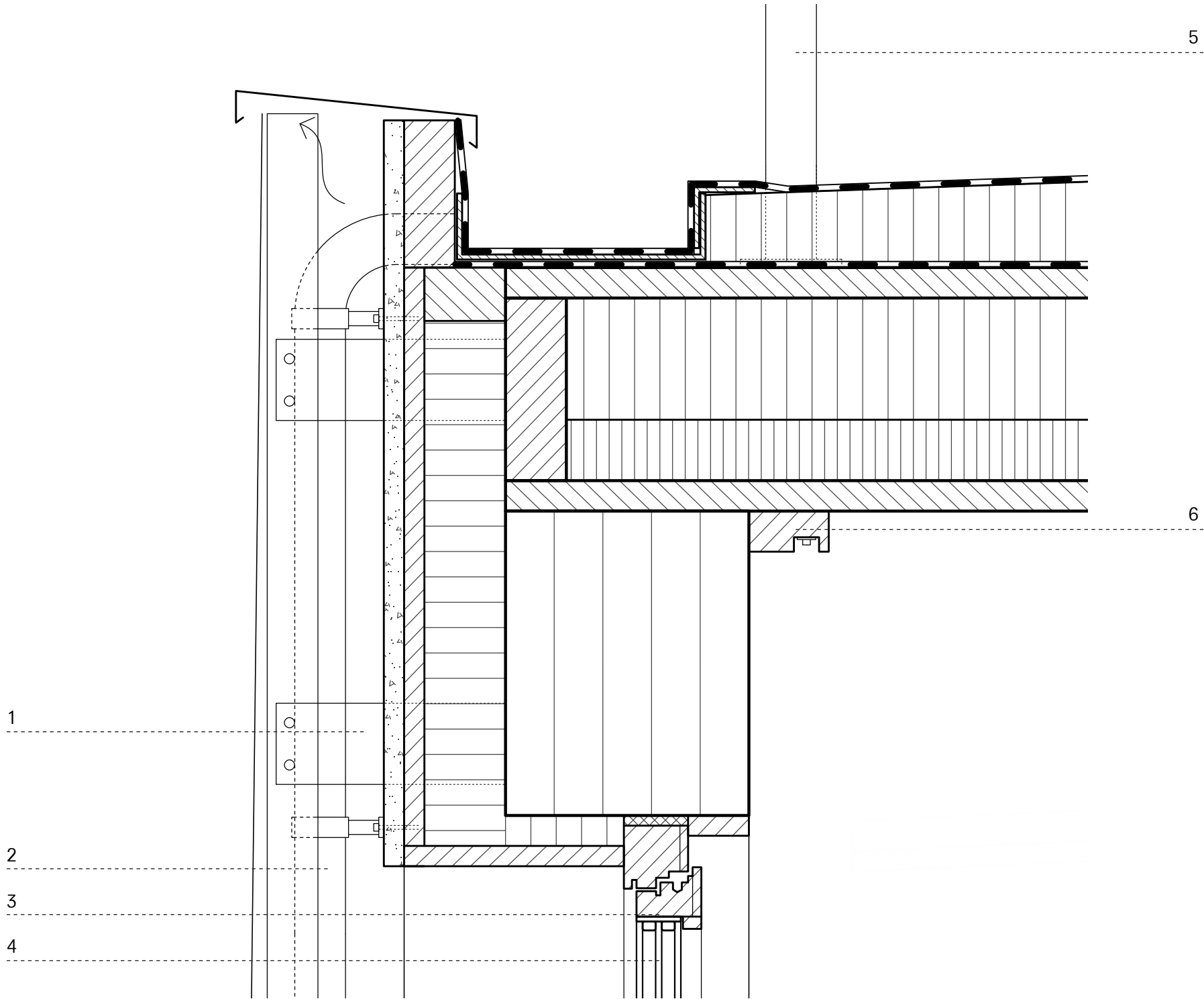
Exterior wall construction  
(from inside to outside)

Glulam truss	240mm
Insulation	80mm
Plywood board	20mm
Plaster	20mm
Cavity	140mm
Facade cladding carrier	
Crossbroke steel sheet	

Accessible roof construction  
(from inside to outside)

Lignatur timber box element with insulation and acoustic insulation	240mm
Damp proof membrane	2mm
2% prefab slope insulation	
water proof membrane	2mm
Pedestal bearings	
Substructure	40mm
Fiber cement panel	20mm

- 1 Facade cladding carrier
- 2 Aluminium rain pipe
- 3 50\*70mm wood window frame
- 4 Triple glass
- 5 Balustrade
- 6 Curtain track



Construction Detail

Music Studio Envelope

level of detail 1:5  
printed scale 1:5



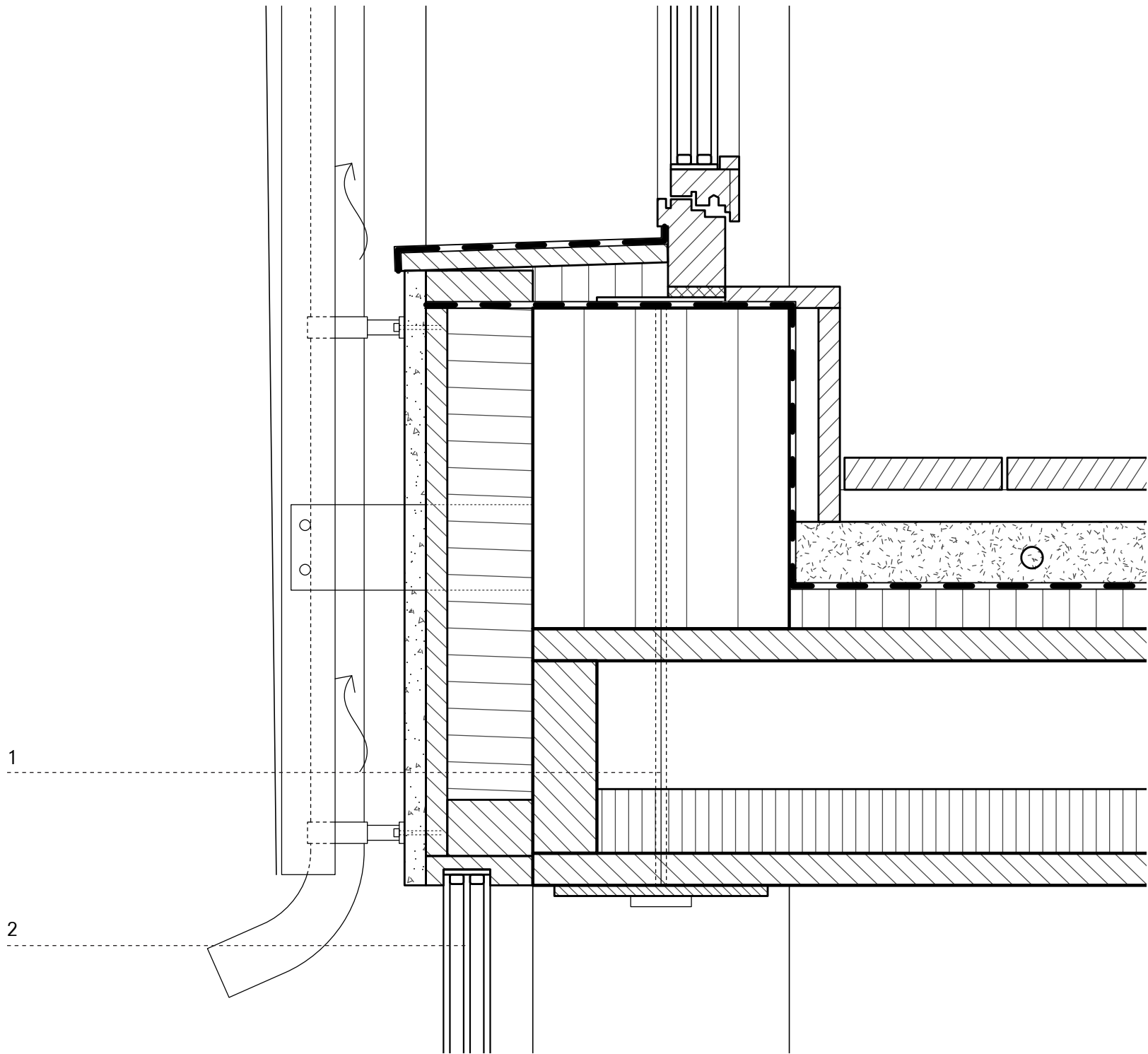
Exterior wall construction  
(from inside to outside)

Glulam truss	240mm
Insulation	80mm
Plywood board	20mm
Plaster	20mm
Cavity	140mm
Facade cladding carrier	
Crossbroke steel sheet	

Floor construction  
(from bottom to top)

Lignatur timber box element with acoustic insulation	240mm
Insulation	20mm
Damp proof membrane	2mm
Heated screed	60mm
Substructure	20mm
Parquet floor	20mm

- 1 Hanger
- 2 Fixed triple glass

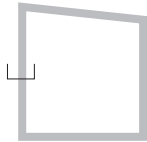




Construction Detail

Bridge Floor Joint

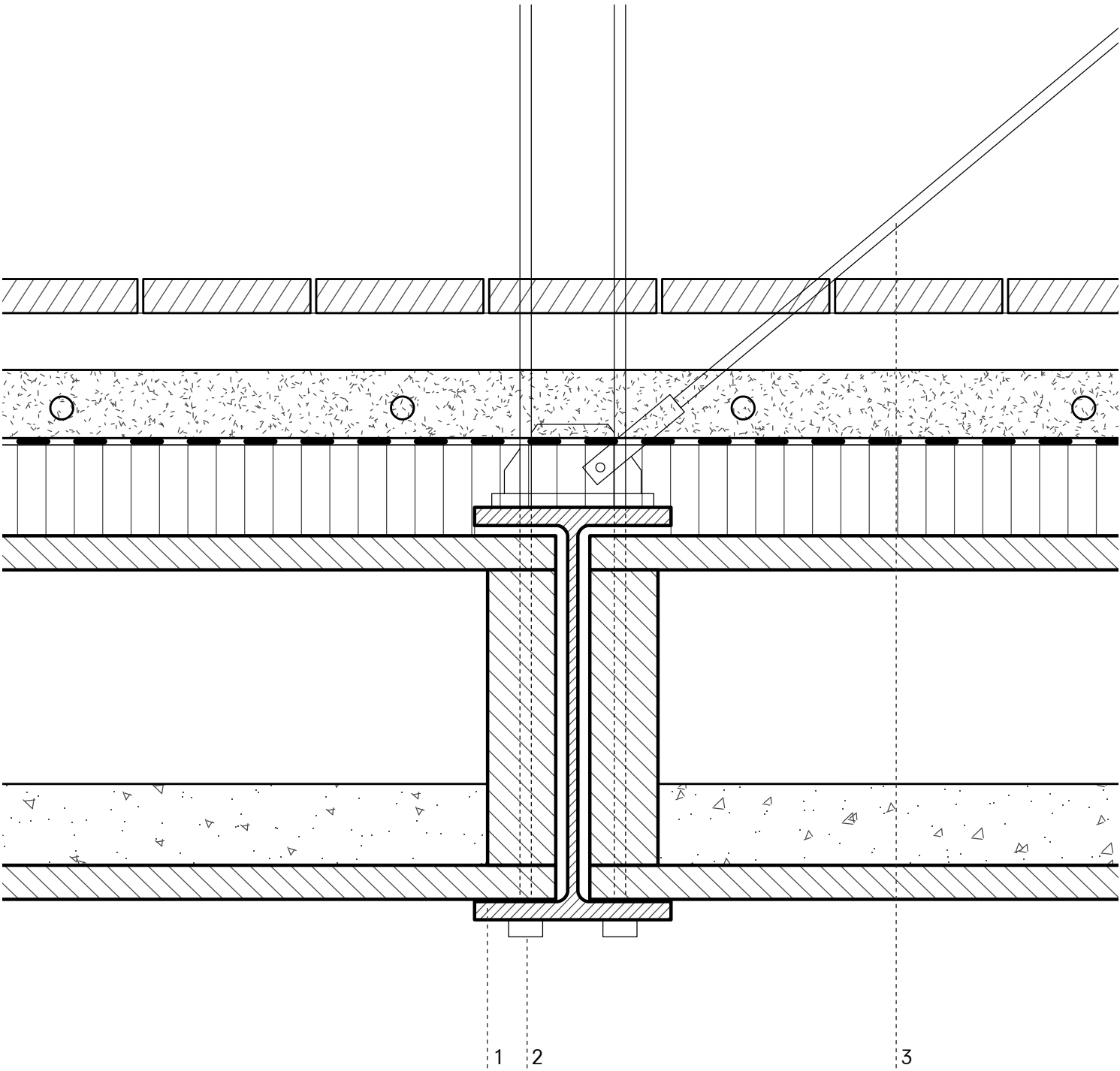
level of detail 1:5  
printed scale 1:5



Floor construction  
(from bottom to top)

- Lignatur timber box element with mass 50kg/m² 320mm
- Insulation 80mm
- Waterproof membrane 2mm
- Heated screed 60mm
- Substructure 20mm
- Parquet floor 20mm

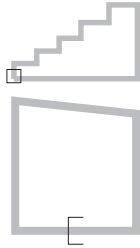
- 1 Steel beam 363\*173mm
- 2 Hanging cable 20mm
- 3 Lateral bracing cable 20mm



Construction Detail

Ground Joint

level of detail 1:5  
printed scale 1:5



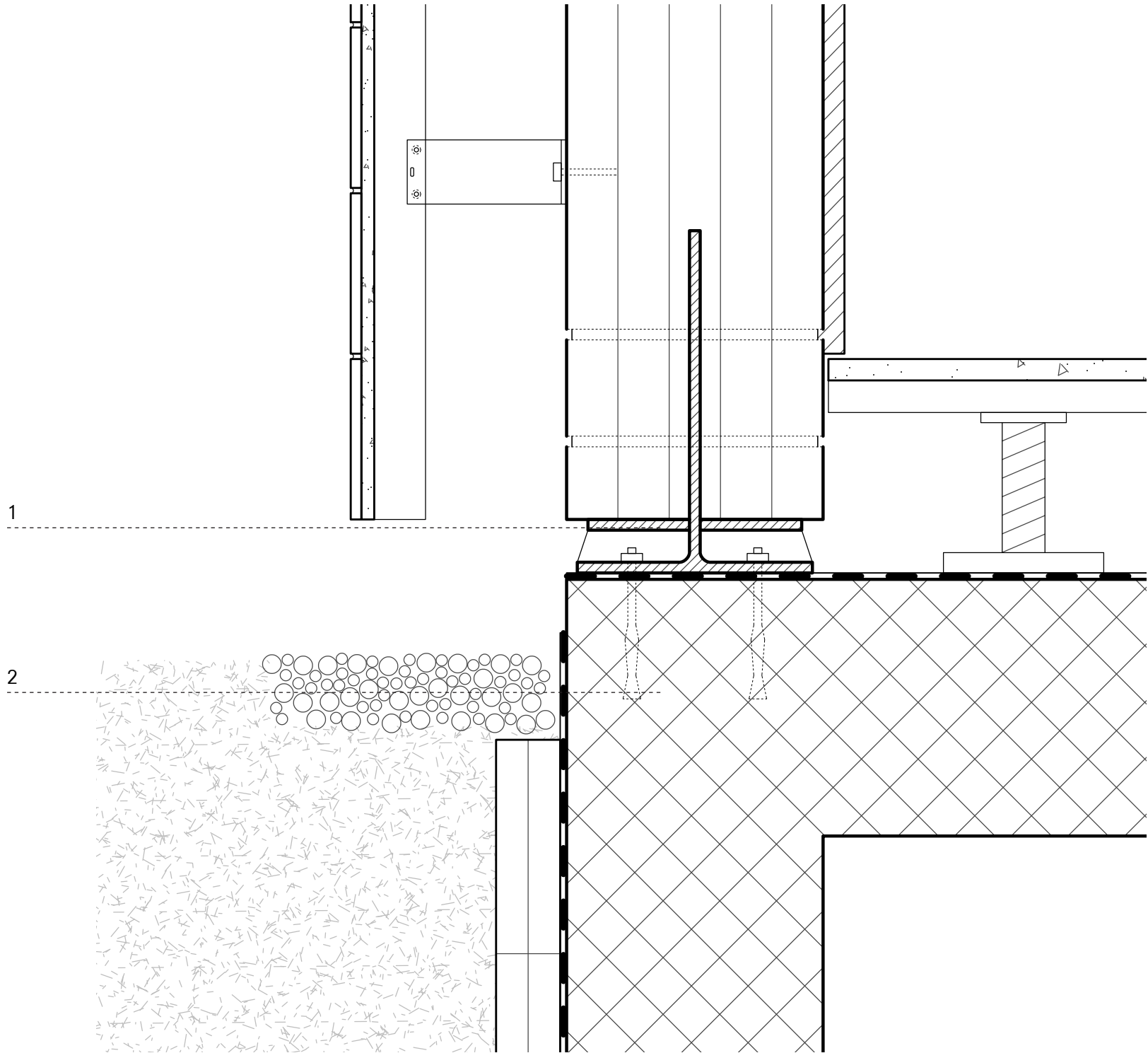
Exterior wall construction  
(from inside to outside)

- Plywood board 20mm
- Glulam column 240mm
- Cavity 120mm
- Facade cladding carrier
- Carrier plate 10mm
- Ceramic tile 10mm

Basement wall construction  
(from inside to outside)

- Concrete wall 240mm
- Waterproofing 2mm
- Porous boards 60mm

- 1 Column bears with knife plate
- 2 Gravel





Construction Detail

Interior Corridor

level of detail 1:5  
printed scale 1:5



Music studio floor construction  
(from bottom to top)

- Lignatur timber box element with acoustic insulation 240mm
- Insulation 20mm
- Dampproof membrane 2mm
- Heated screed 60mm
- Substructure 20mm
- Parquet floor 20mm

Corridor floor construction

- Plywood ceiling 15mm
- CLT slab 80mm
- Screed 50mm
- Linoleum floor 10mm

