



Spaces for Hope

In what ways can community spaces be used to foster preparedness among residents in anticipation of a predicted earthquake in Istanbul?

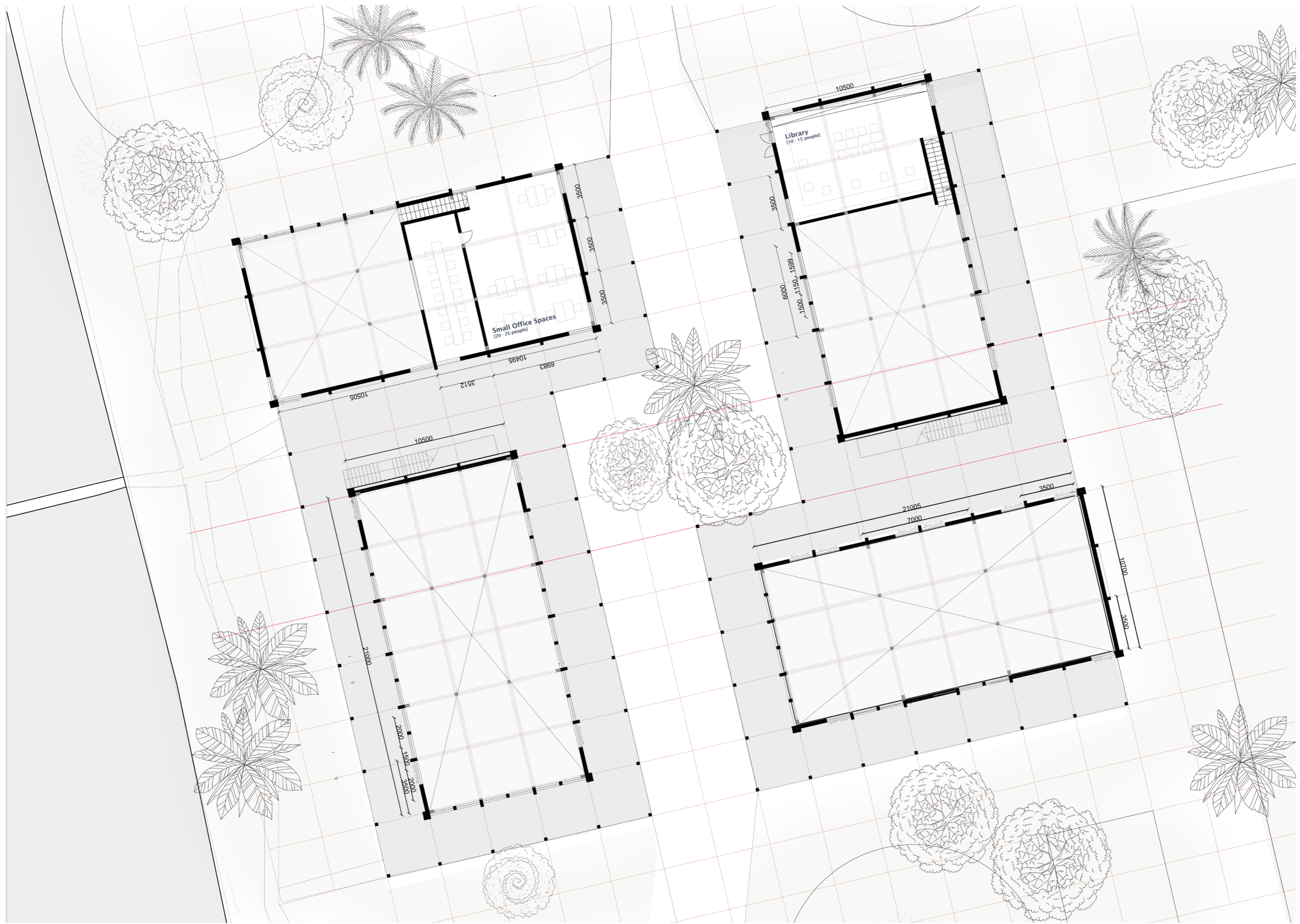
Explore Lab | Drawing Set | June 2024
Leyla van der Waarde



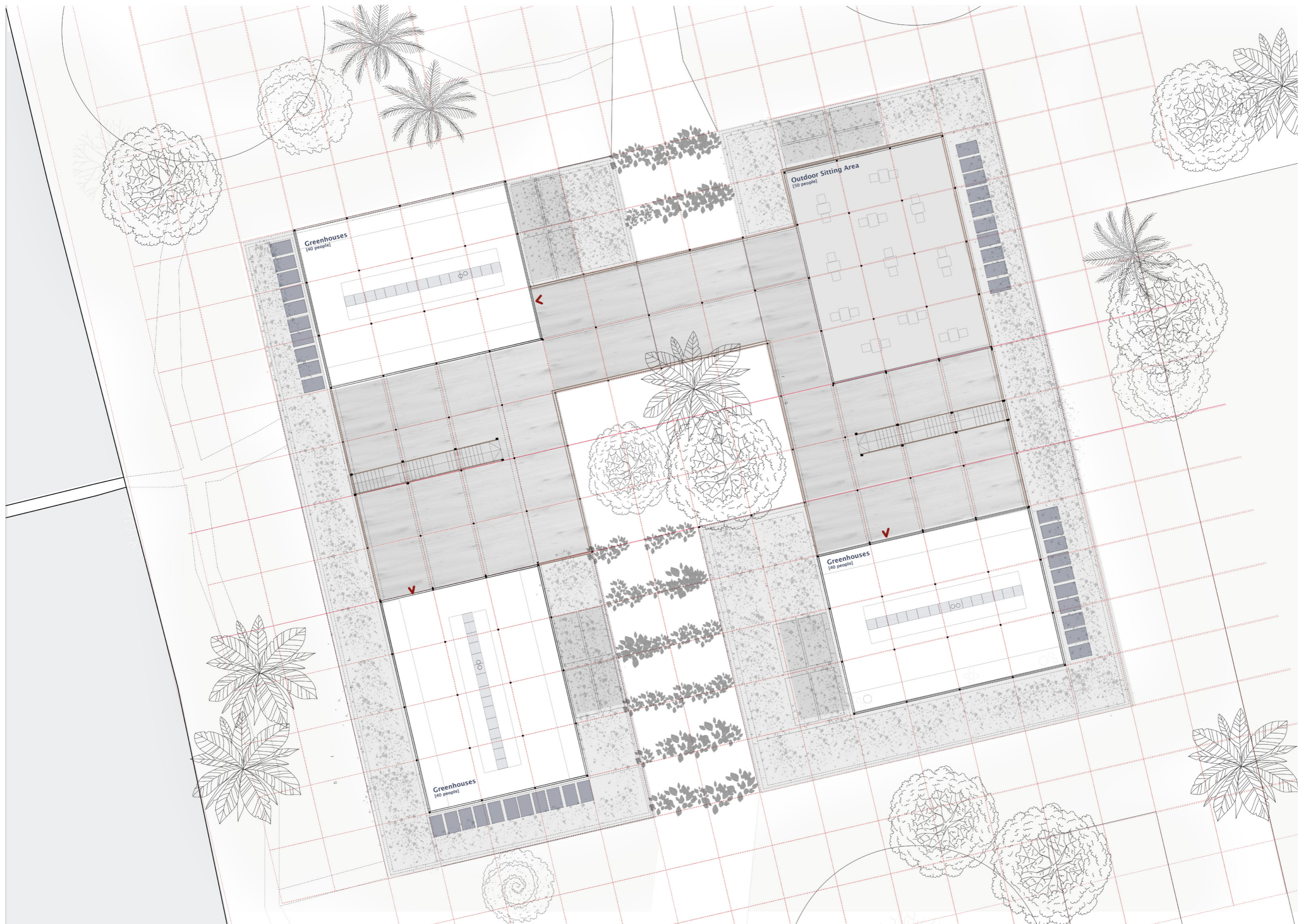
▲ **Site Plan 1:1000**
Ground Floor



▲ Floorplans 1:100
Ground Floor



▲ **Floorplans 1:100**
First Floor



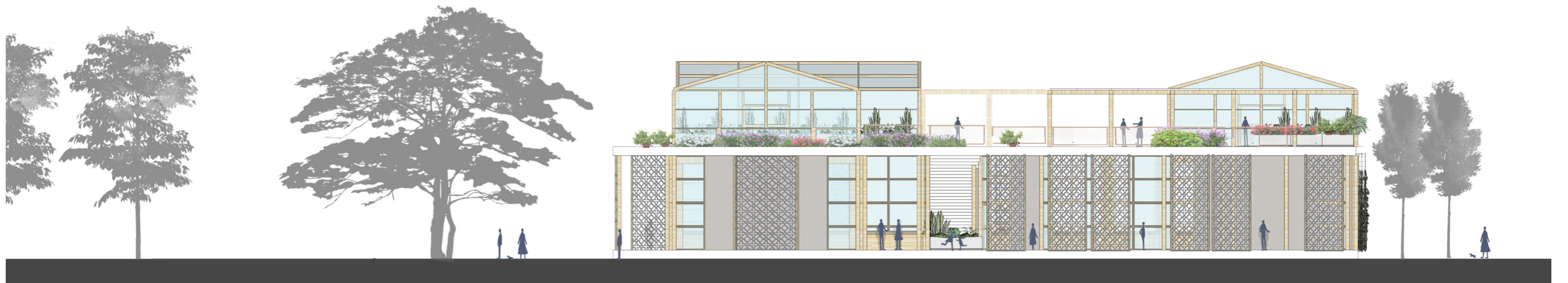
▲ Floorplans 1:100
Roof



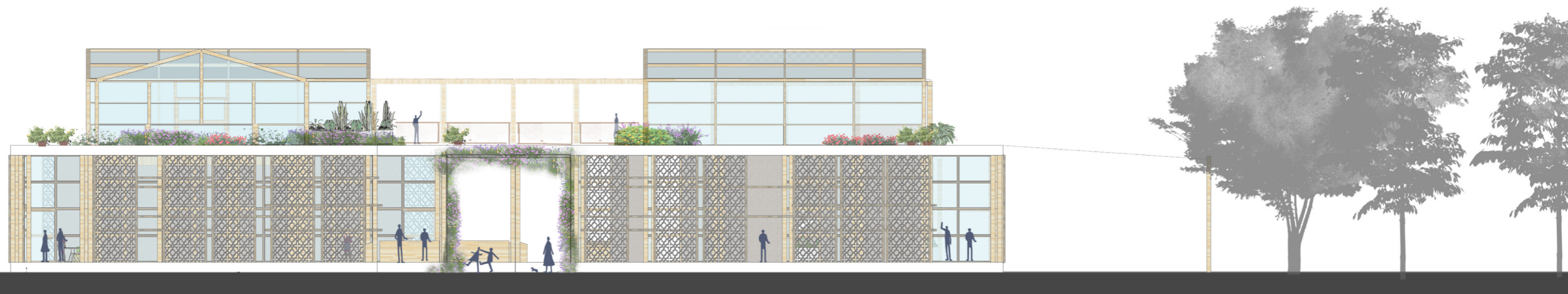
Section 1:100
AA



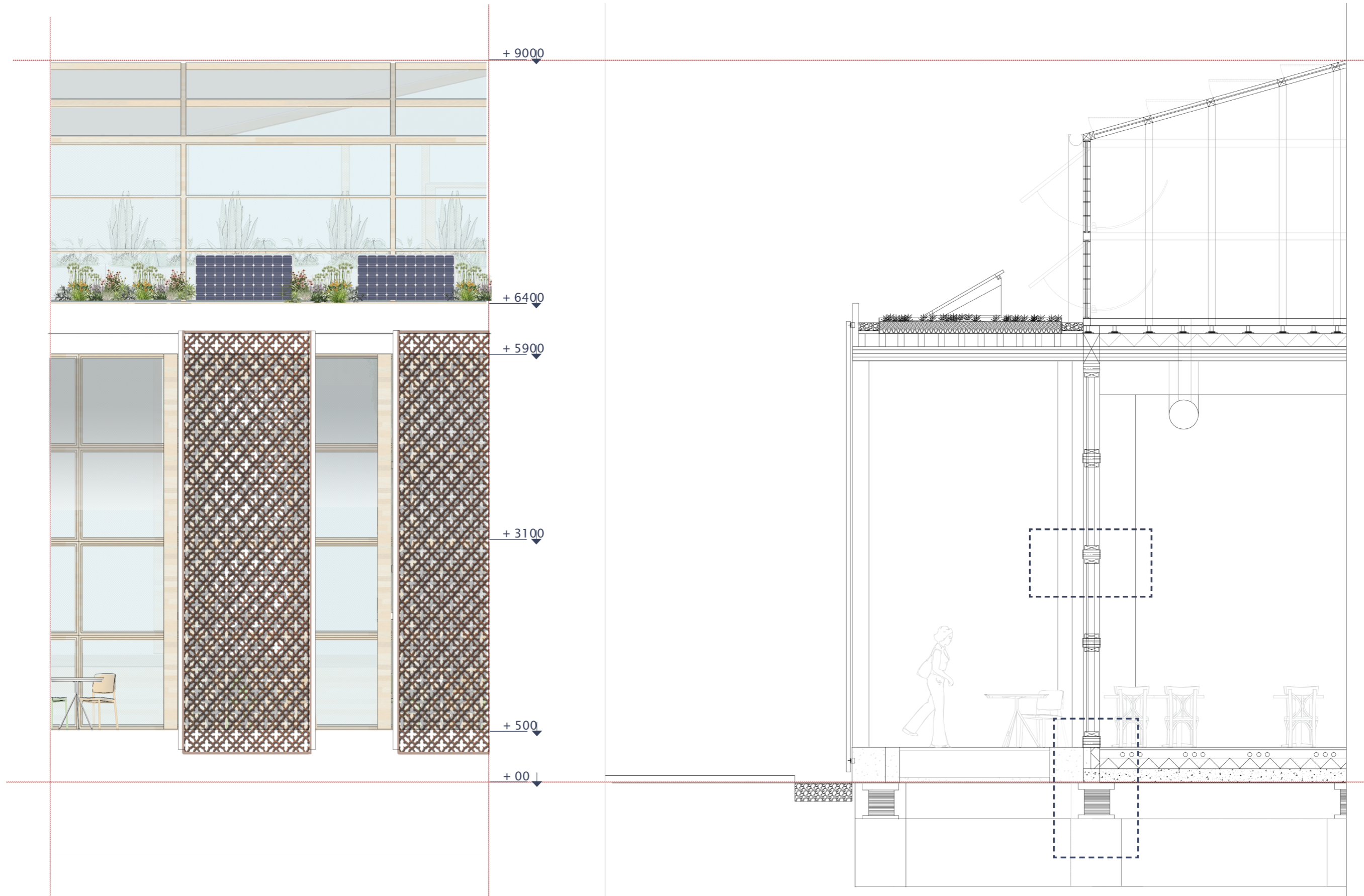
Section Interior 1:100
AA



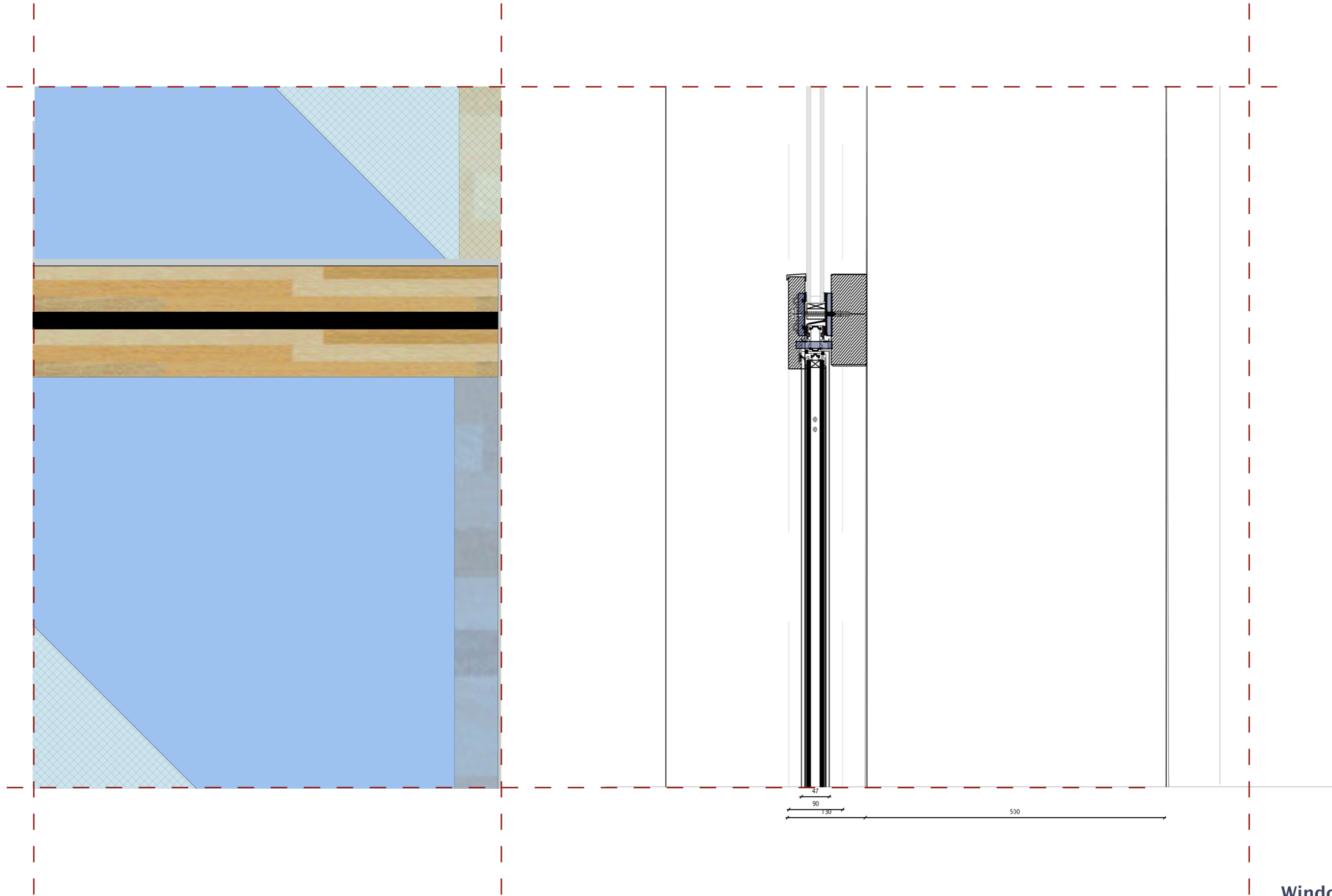
Elevation 1:100
East (top) & West (bottom)



Elevation 1:100
North (top) & South (bottom)



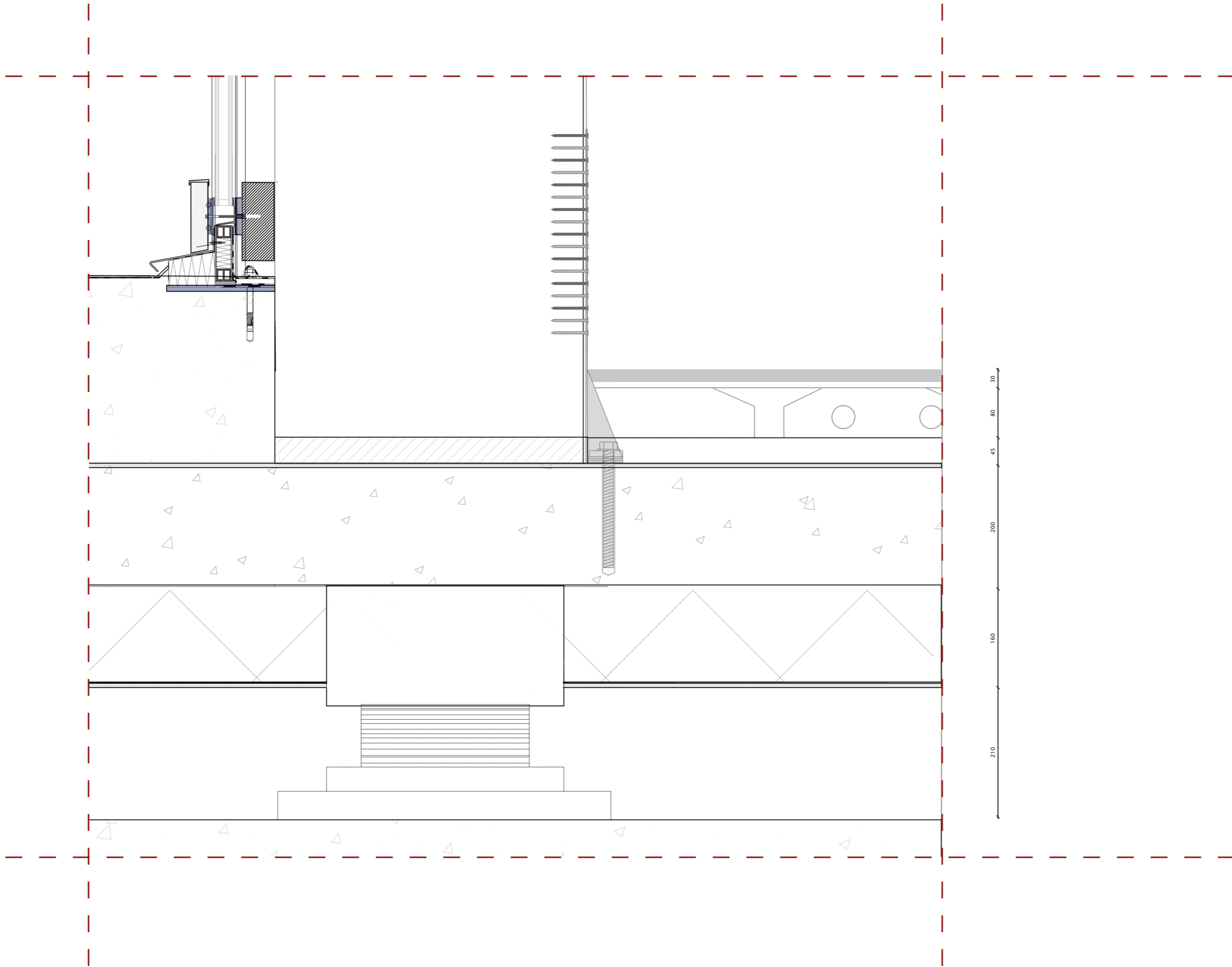
Section 1:20
West facade



Detail 1:5
Window Connection

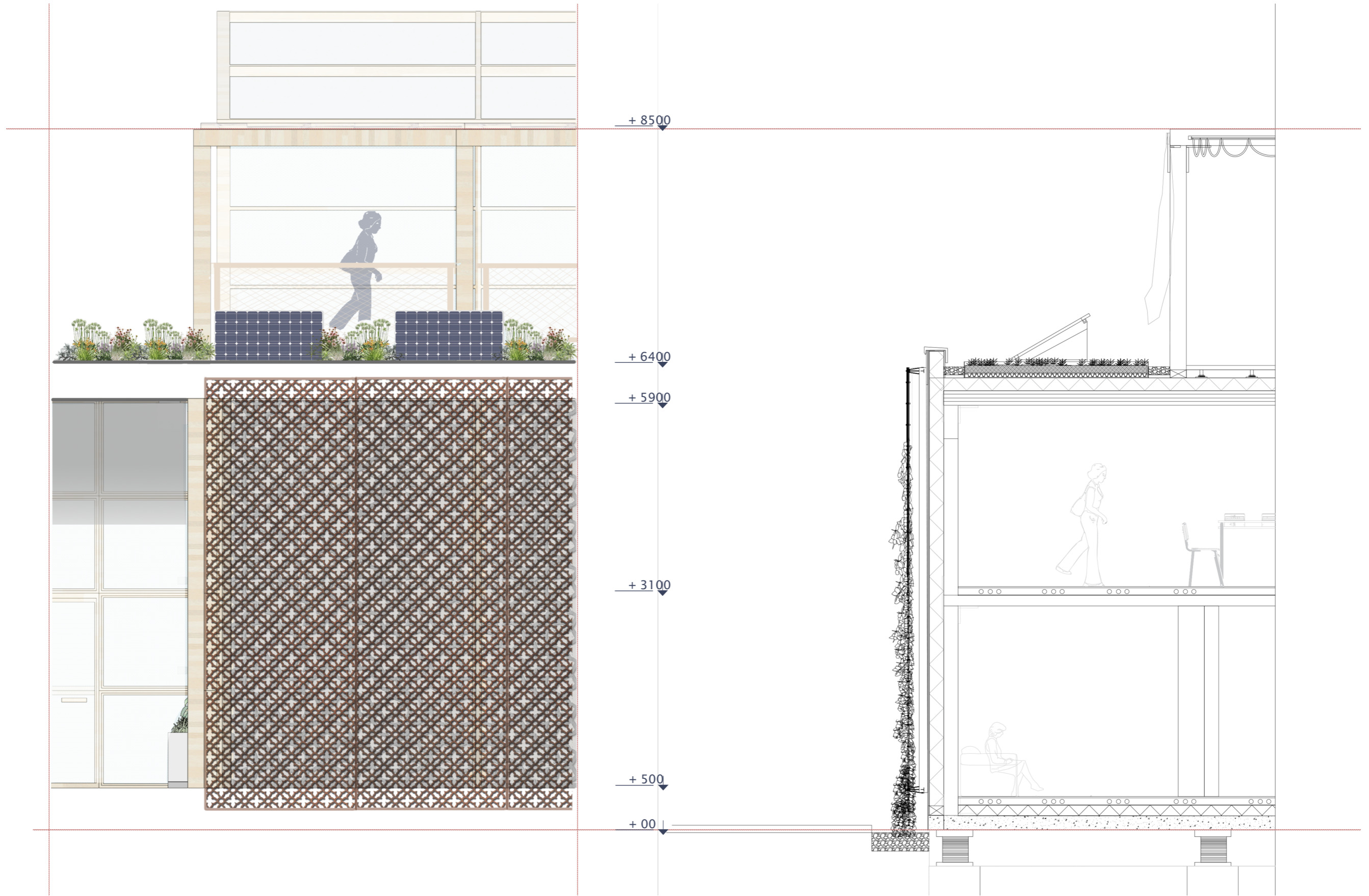
Window Connection
(1) Tripple glass
(2) Protection Foil

(1) Wooden window frames
(2) Between frames rubber bands for resistance

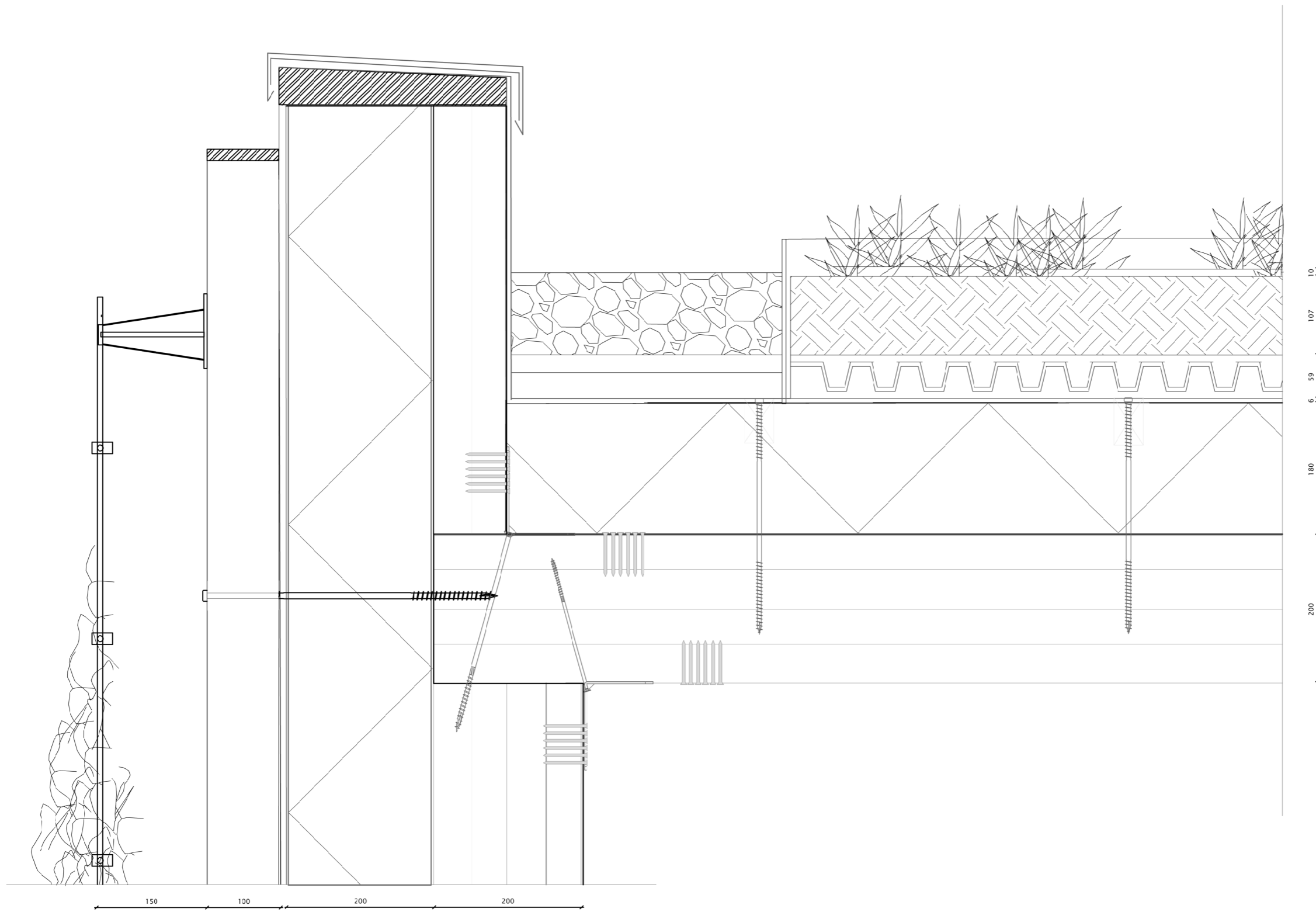


Detail 1:5
Foundation connection

- Foundation Connection**
- (1) Wooden floor (30 mm)
 - (2) Aluminium Plates (2 mm)
 - (3) Floor Heating pipes (18 mm)
 - (4) Insulation (150 mm)
 - (5) Concrete floor slab (200 mm)
 - (6) Seismic base isolation

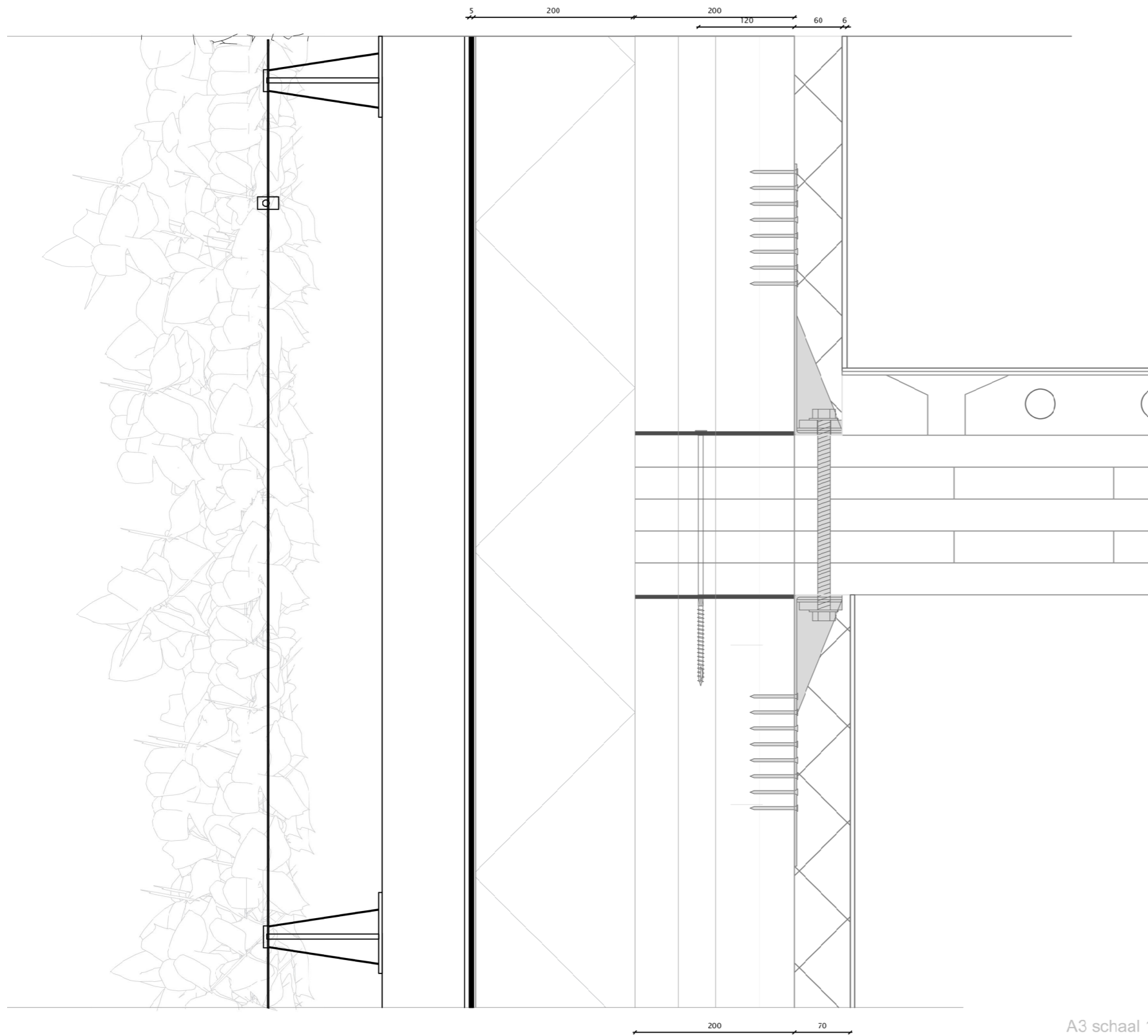


Section 1:20
North facade



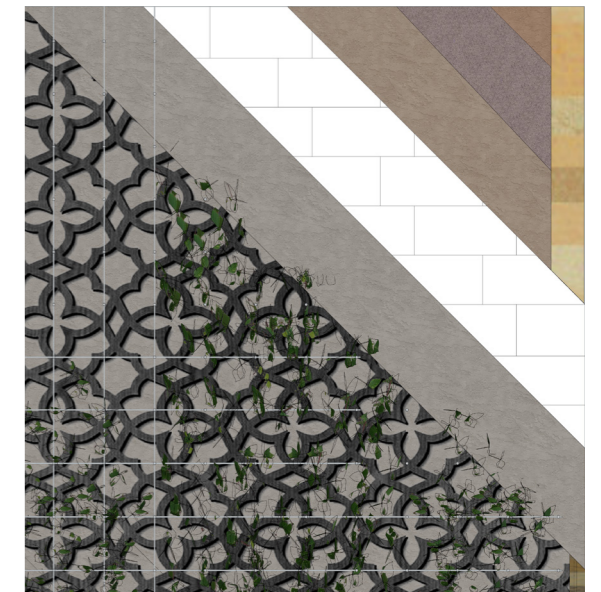
Detail 1:5
Roof connection

- Roof Connection**
- (1) Solar Panels
 - (2) Vegetation & Plants
 - (3) Growing Substrate (100mm)
 - (4) Drainage element, water reservoir and roof barrier (60 mm)
 - (5) Waterproof membrane (2mm)
 - (6) Rigid Insulation, hennep (180 mm)
 - (7) Vapour control layer (2mm)
 - (8) CLT Flooring system (200mm)

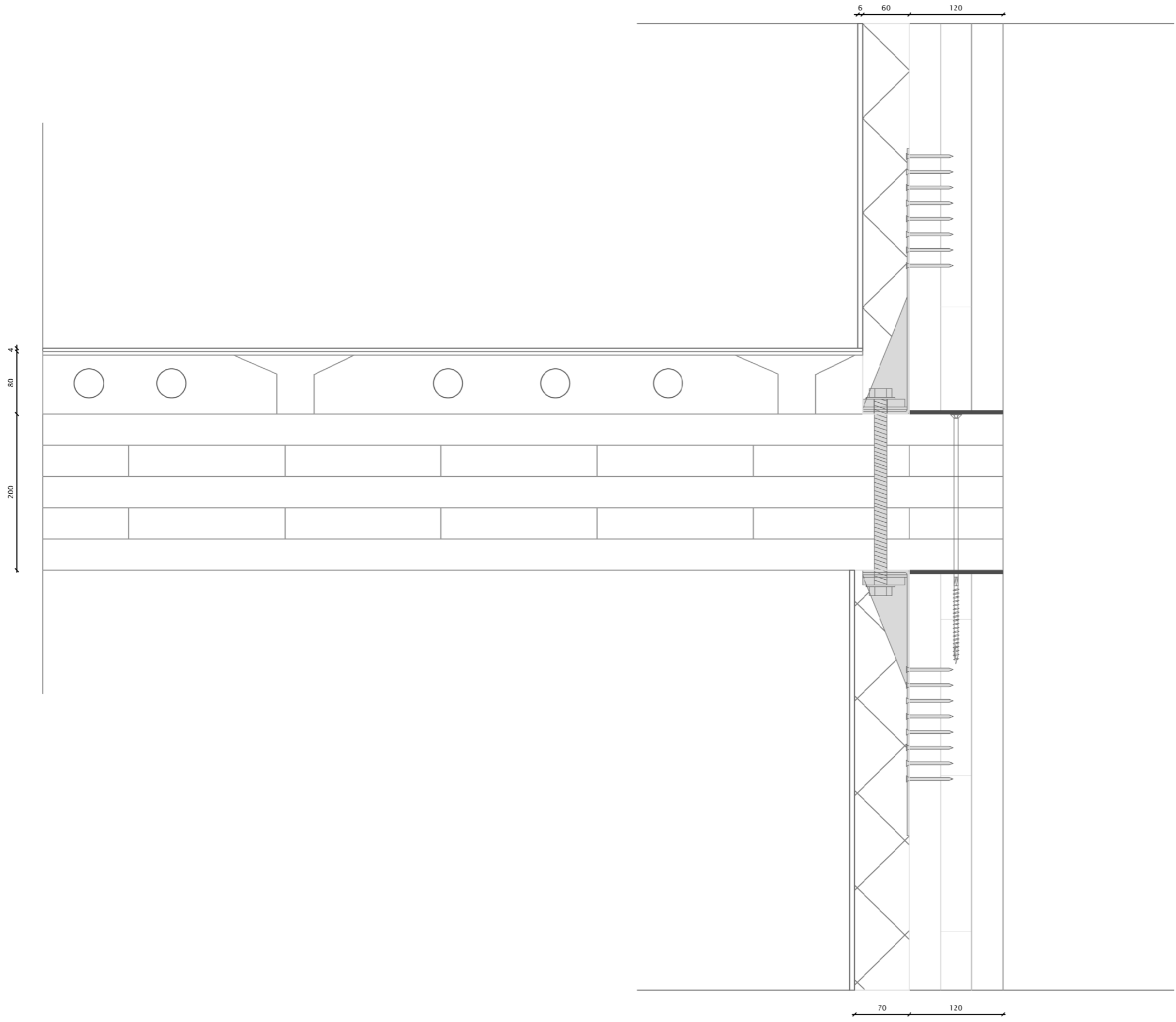


Detail 1:5
Facade structure

A3 schaal 1:5 landscape



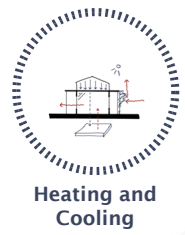
- Facade Structure**
- (1) Climbing Plants
 - (2) Open timber panel with pattern (20 mm)
 - (3) Ecoplastering (20 mm)
 - (4) Hempcrete Insulation Blocks (200 mm)
 - (5) Okil Thin Plaster Layer (10mm)
 - (6) Okil Decorative Plastering (3 mm)



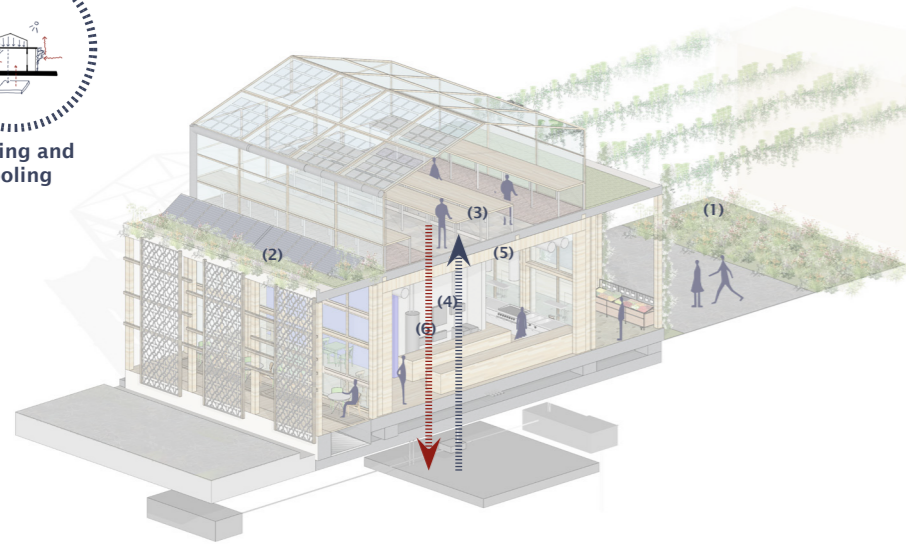
Detail 1:5
Floor structure



- Floor Structure**
- (1) Wooden floor (30 mm)
 - (2) Aluminium Plates (2 mm)
 - (3) Floor Heating pipes (18 mm)
 - (4) Insulation Acoustics (50 mm)
 - (5) Cross laminated Timber Floor (100 mm)



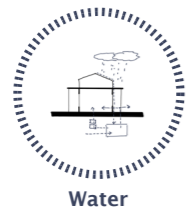
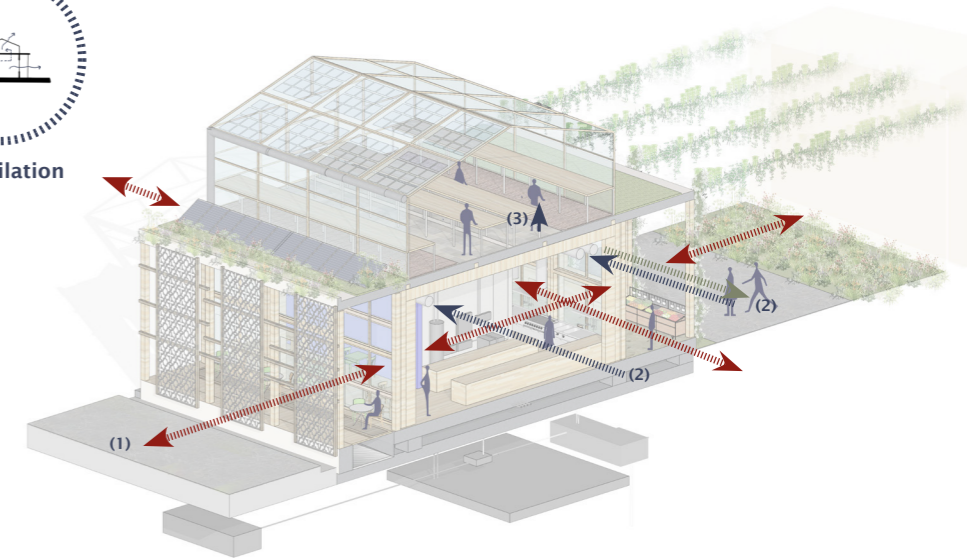
Heating and Cooling



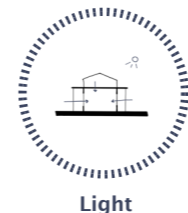
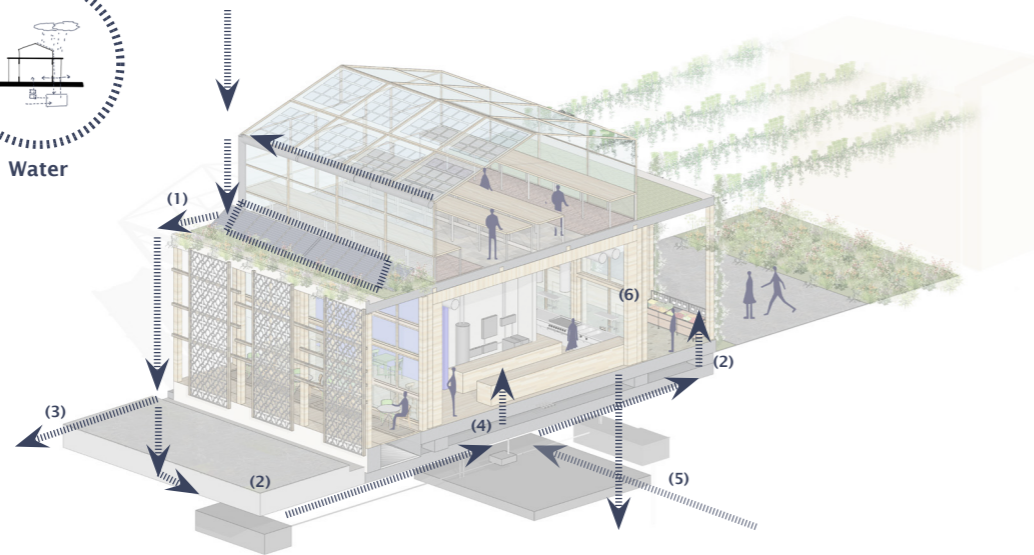
Electricity



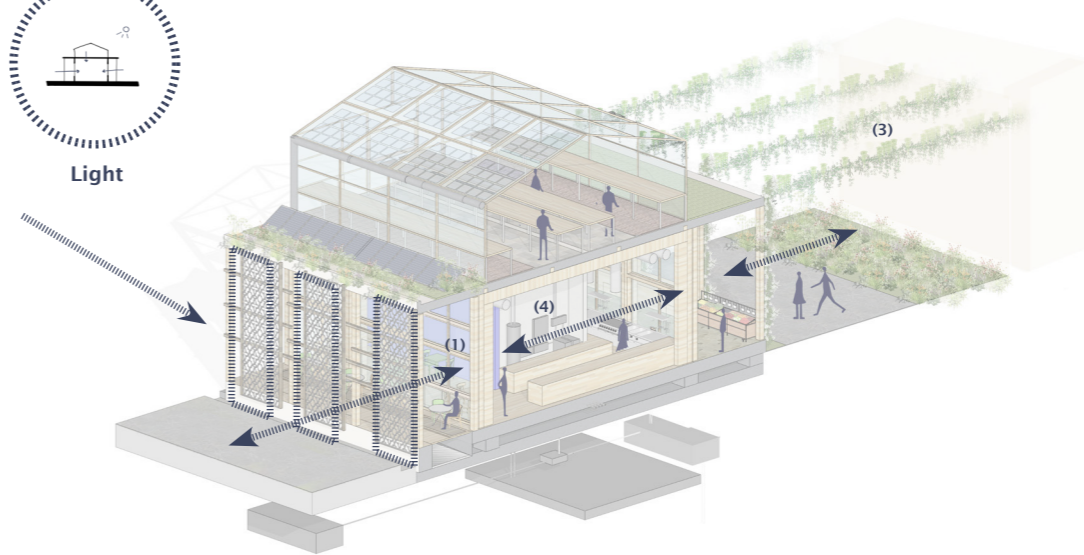
Ventilation



Water



Light



Climate & Circulatory drawings
Example building: Restaurant Blok

