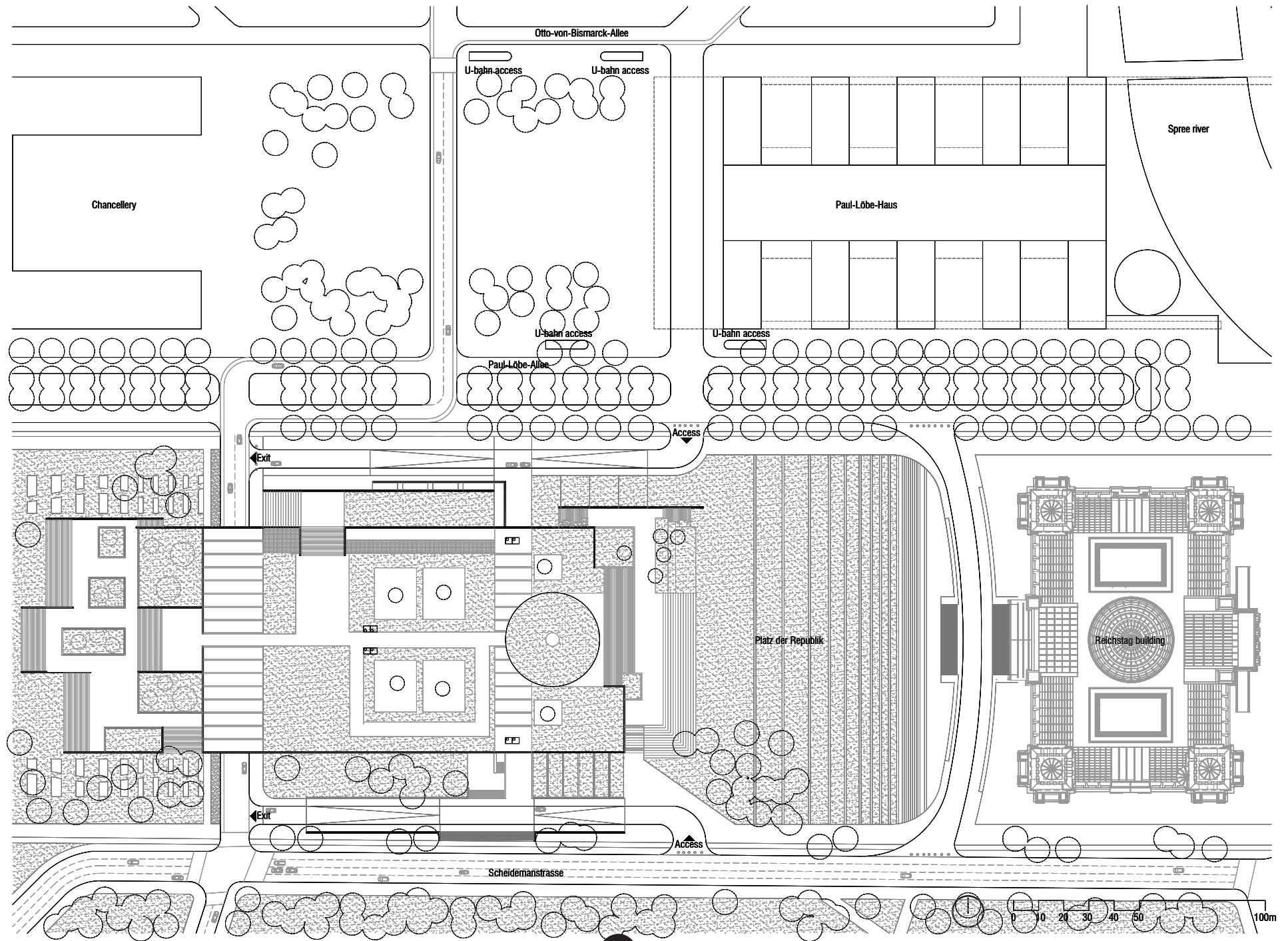




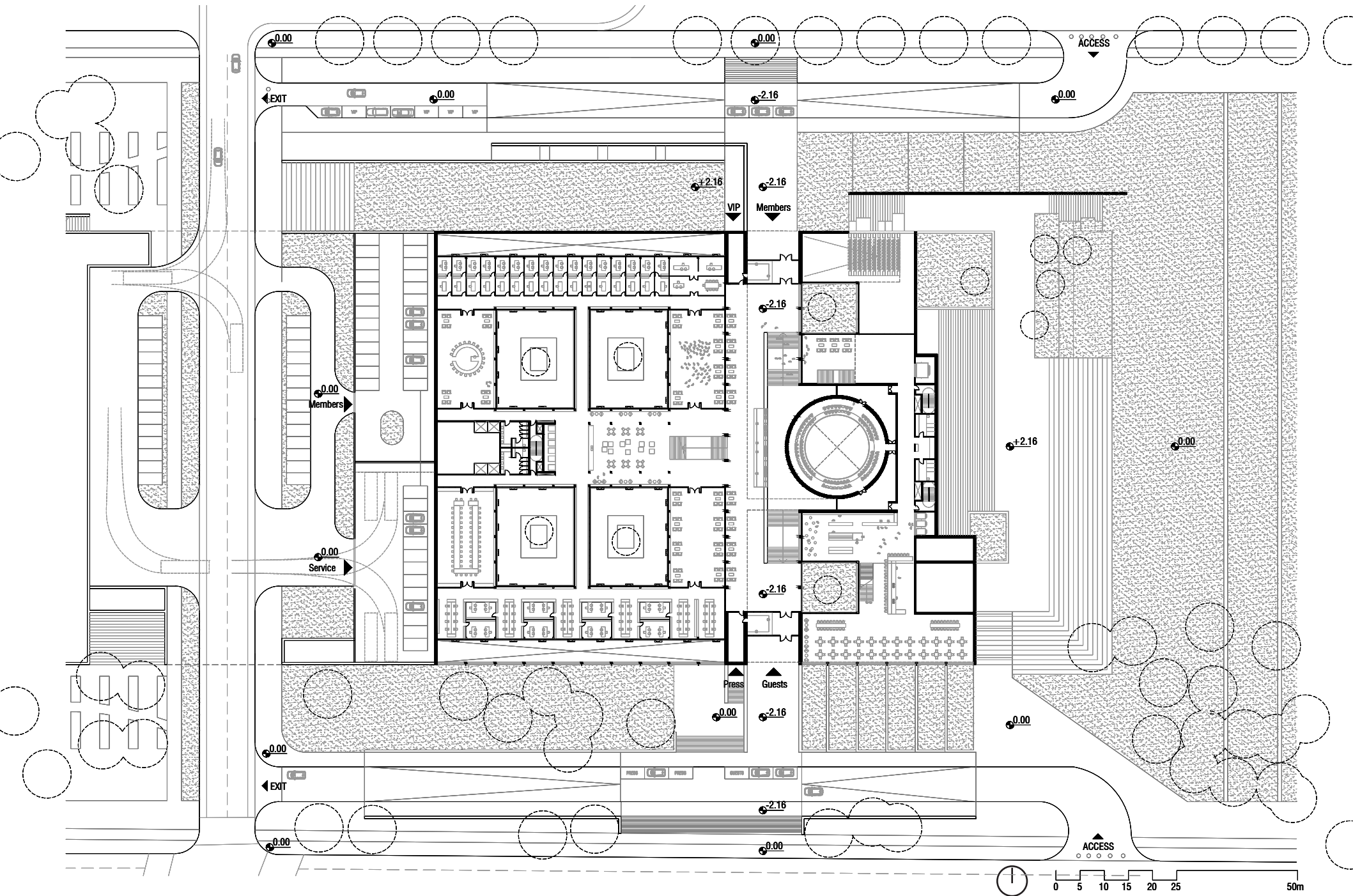
SUSTAINABLE PARLIAMENT FOR GERMANY SET OF DRAWINGS

TUDELFT | COMPLEX PROJECTS | P5_SET OF DRAWINGS | RAFAEL BAULER THEISS | 2023.07.07

Site plan 1:1000 (not to scale)

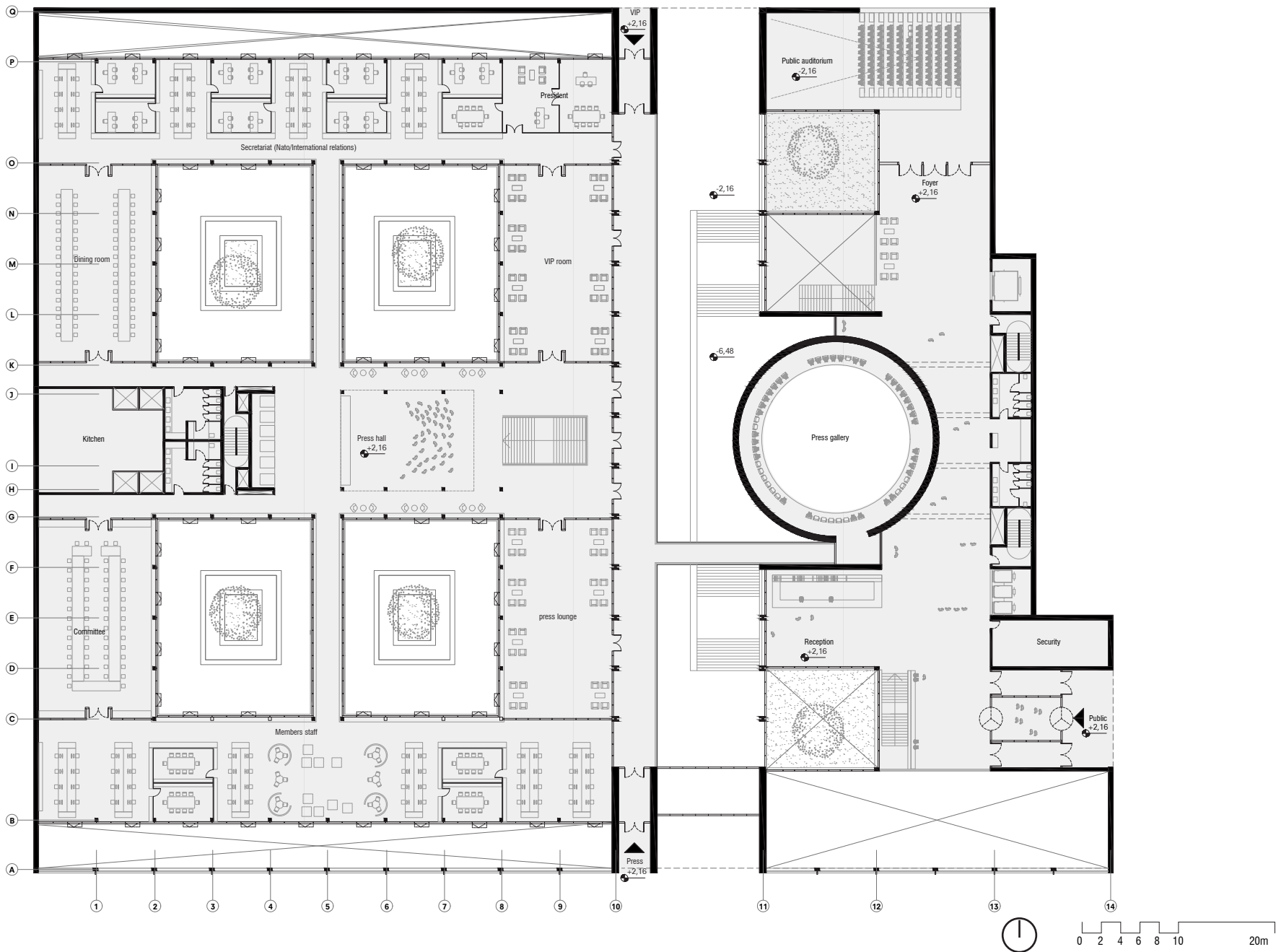


Urban implementation 1:500 (not to scale)



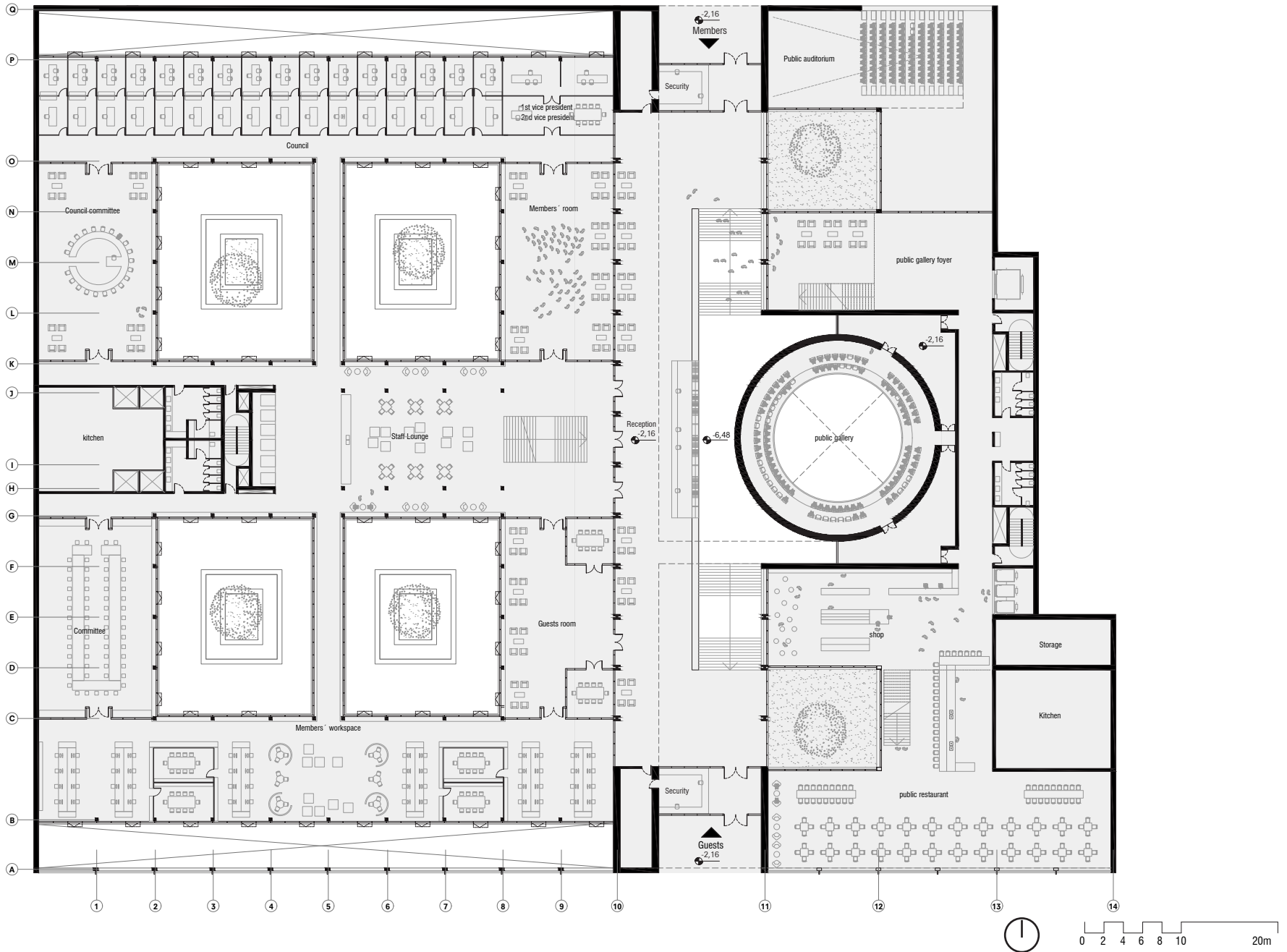
Floor plans 1:200 (not to scale)

LEVEL +1



Floor plans (1:200)

GROUND FLOOR

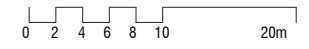
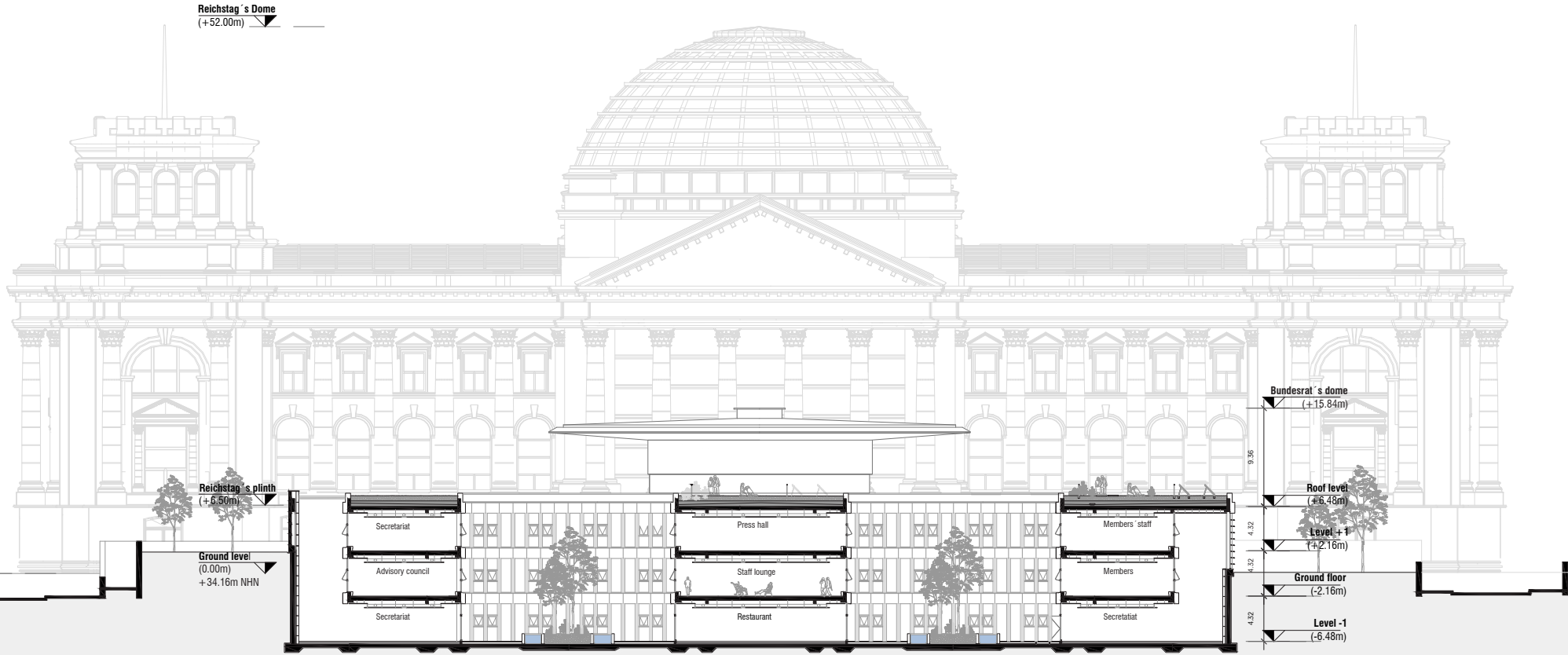


LEVEL -1



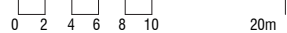
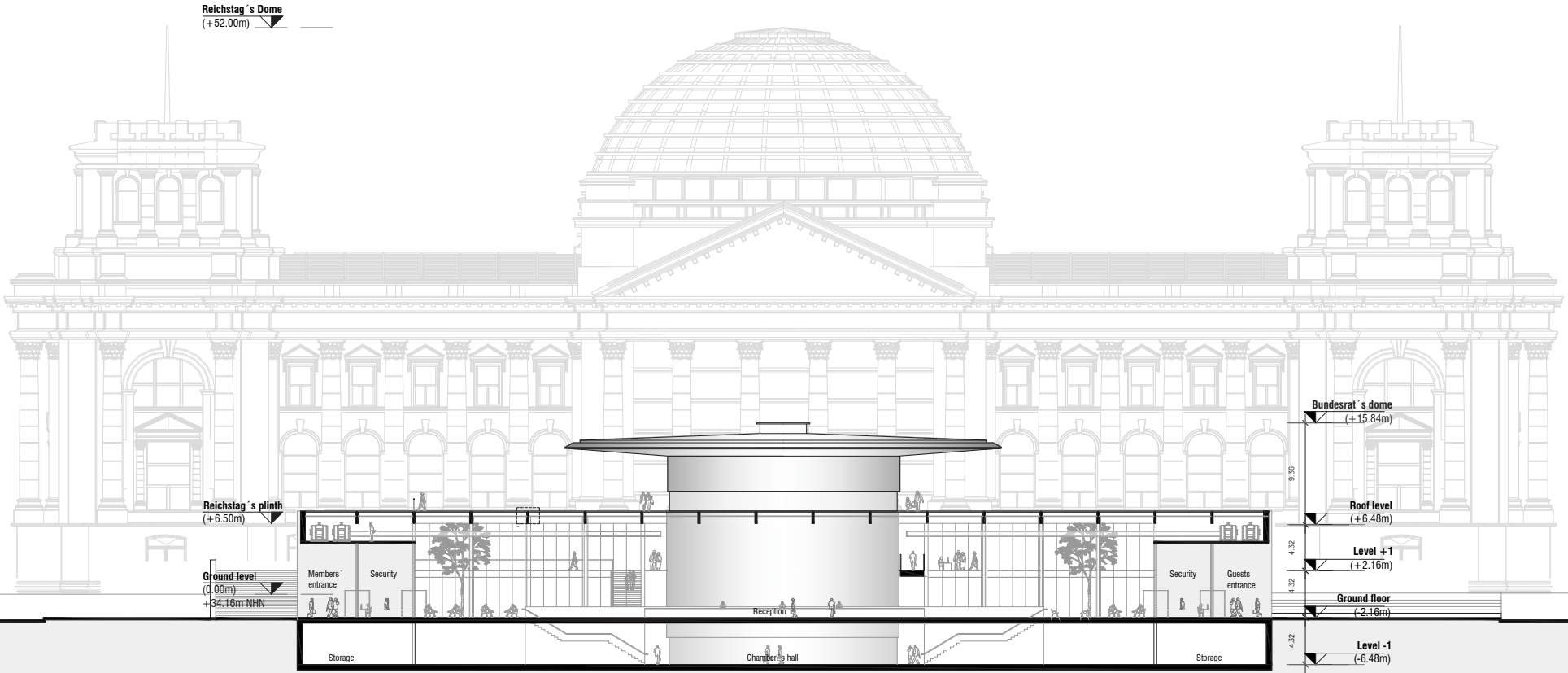
Sections

CROSS SECTION COURTYARD (1:200)



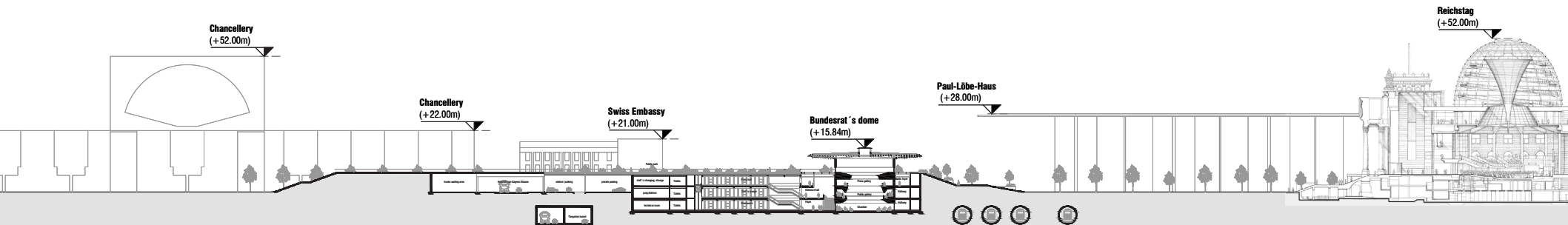
Sections

CROSS SECTION ENTRANCE HALL (1:200)



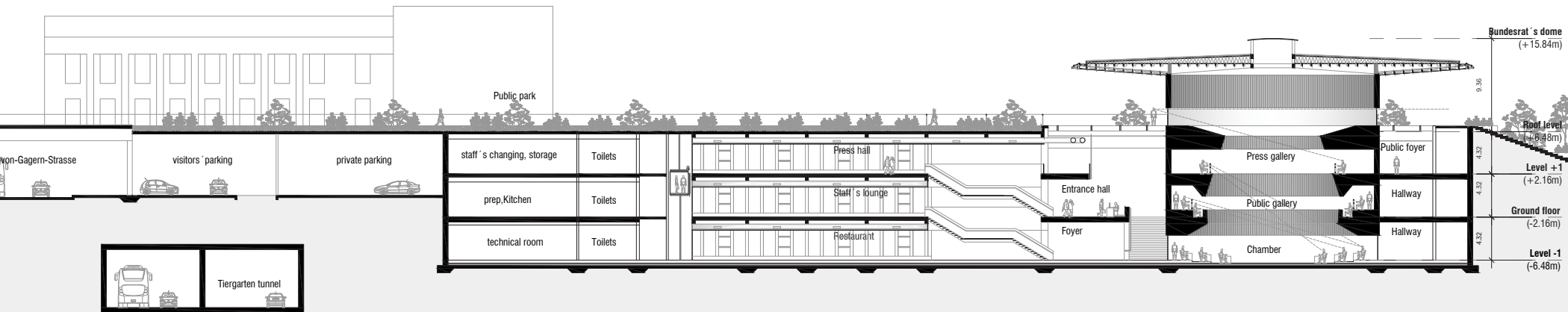
Sections

LONGITUDINAL SECTION (1:1000)



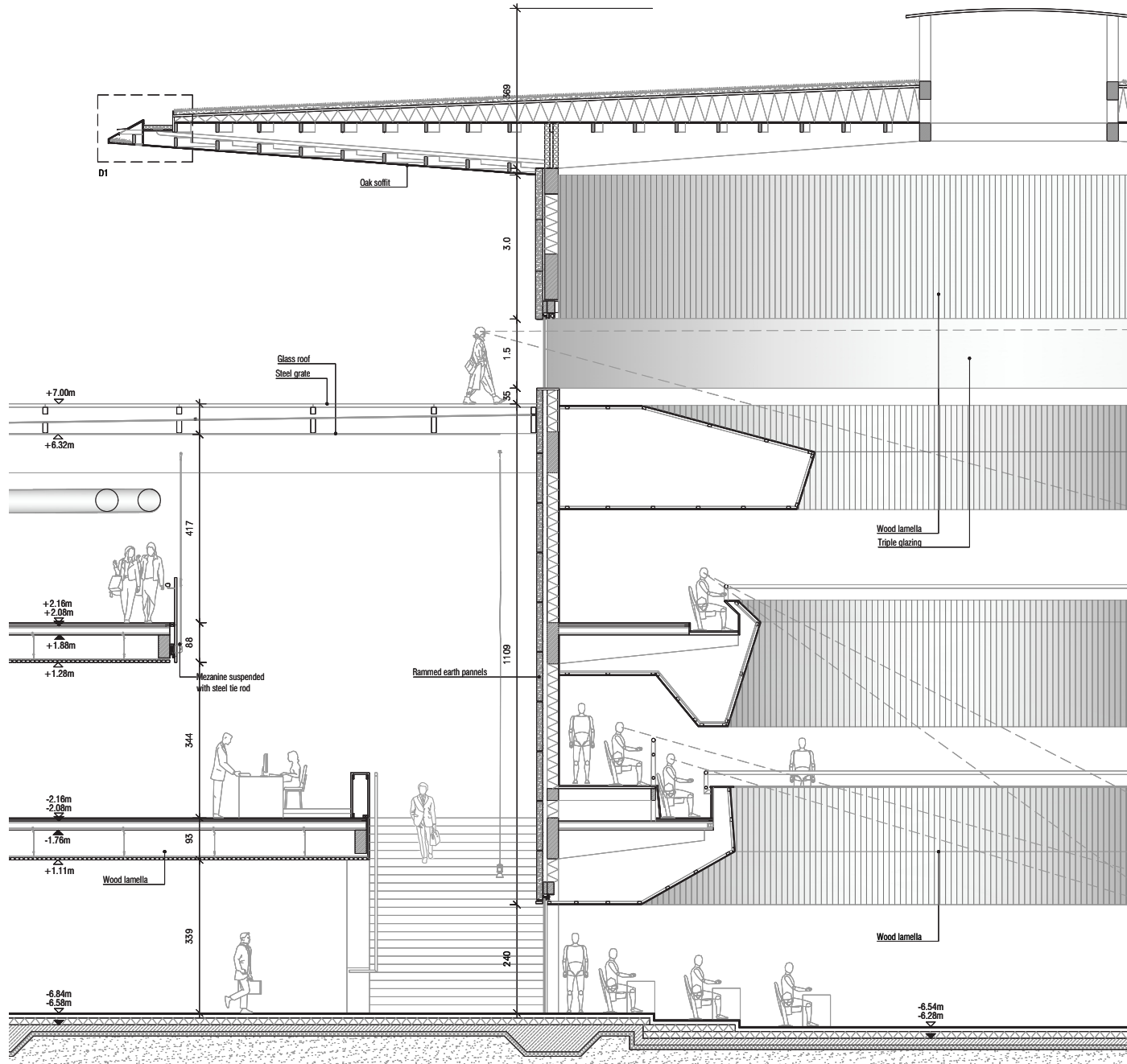
Sections

LONGITUDINAL SECTION (1:200)



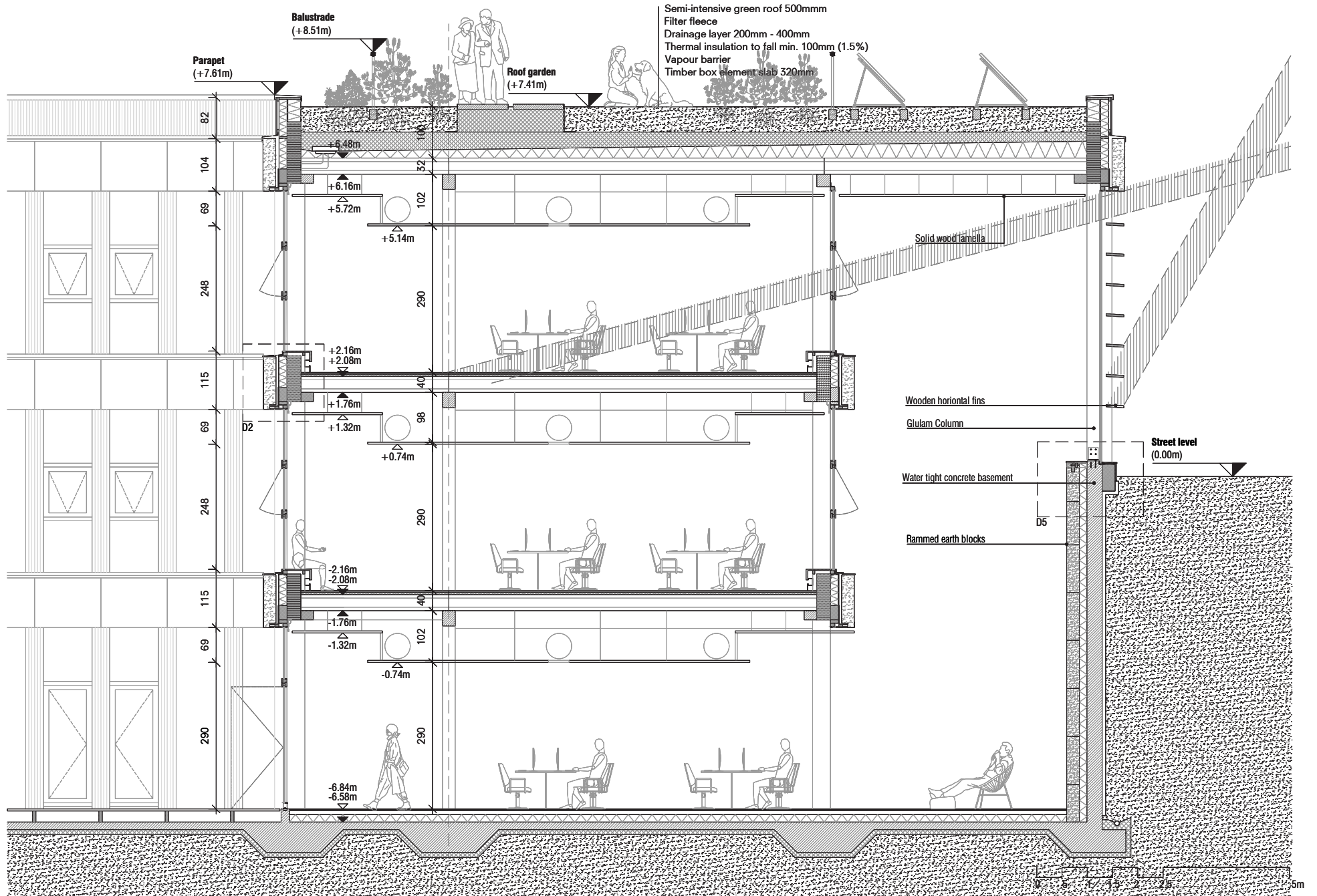
Interior fragment 1:50 (not to scale)

HALL/CHAMBER



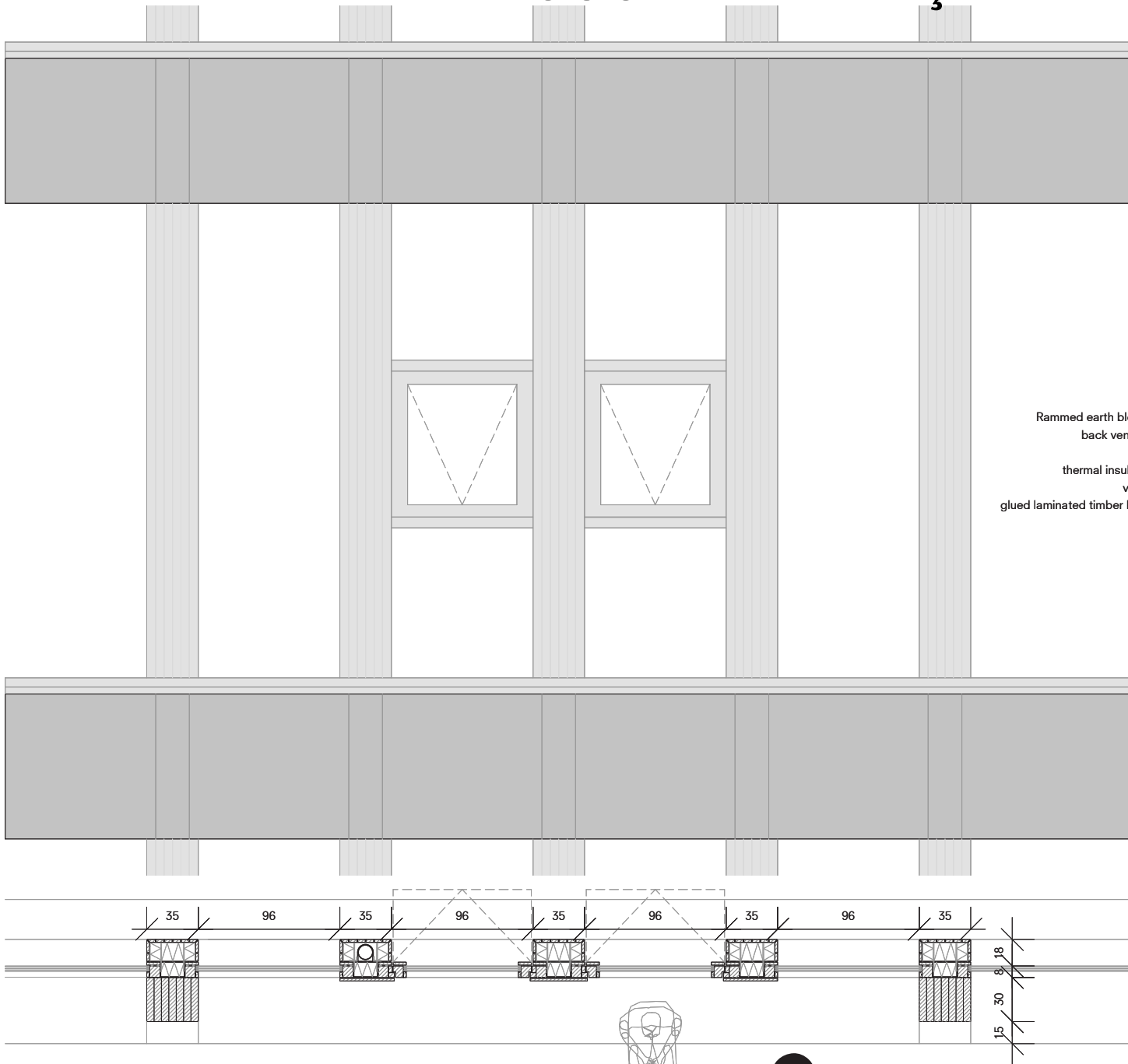
Interior fragment 1:50 (not to scale)

SOUTH WING

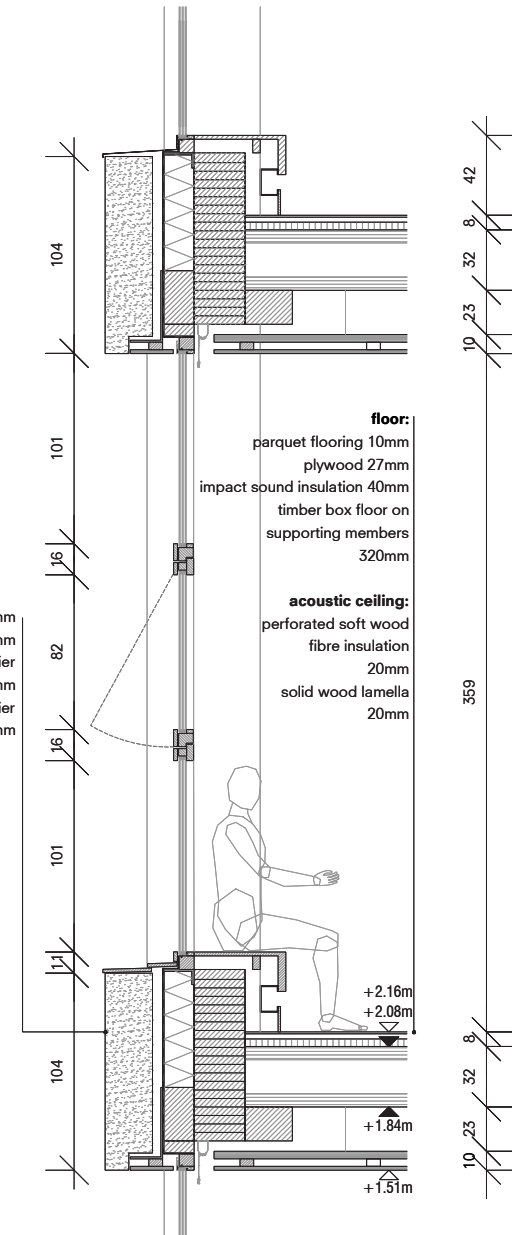


Envelope fragment 1:20 (not to scale)

COURTYARD FAÇADE



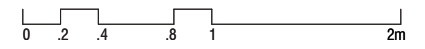
Rammed earth block 250mm
back ventilaton 60mm
wind barrier
thermal insulation 160mm
vapour barrier
glued laminated timber beam 240mm



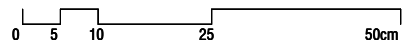
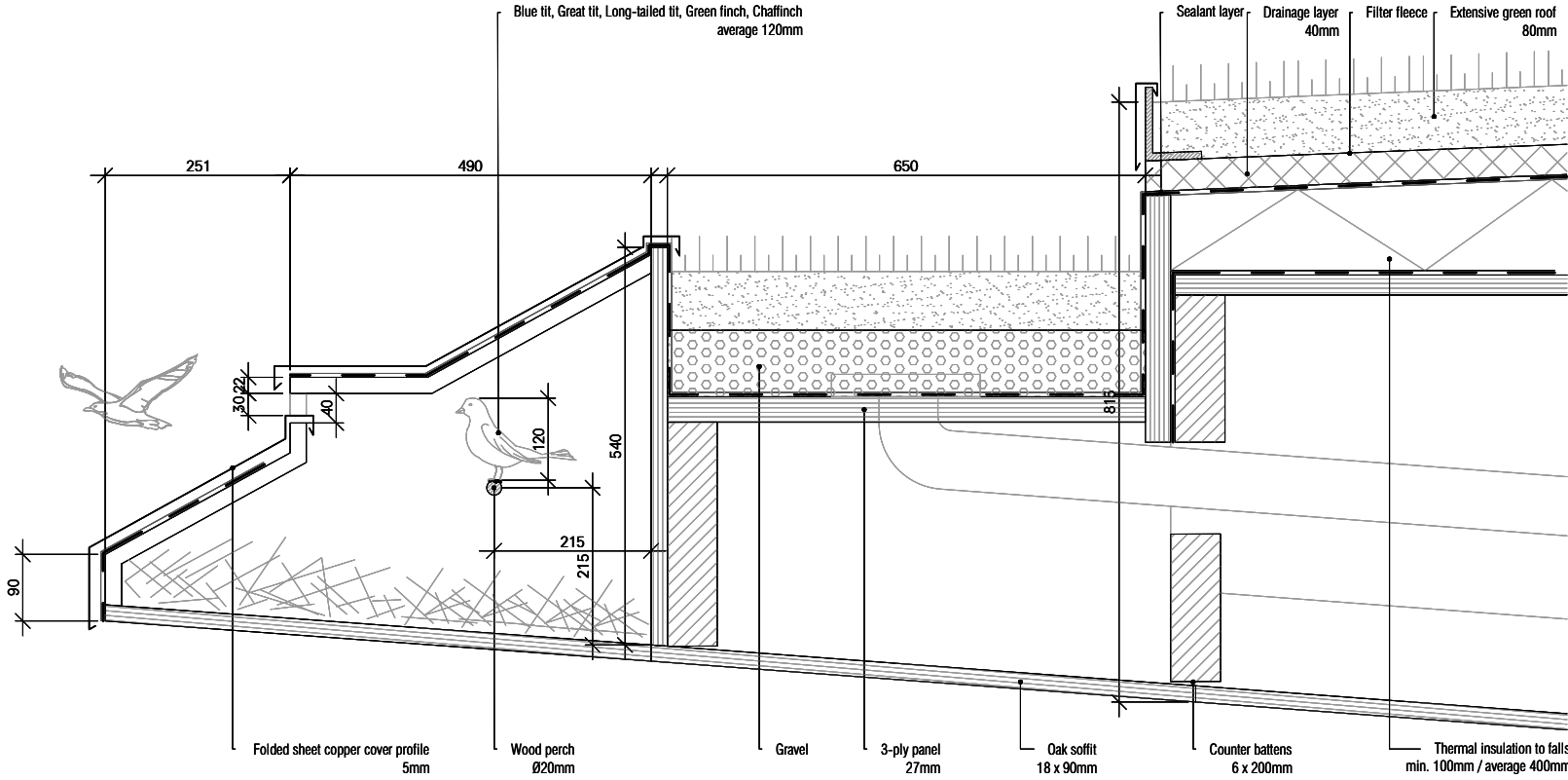
floor:
parquet flooring 10mm
plywood 27mm
impact sound insulation 40mm
timber box floor on supporting members 320mm

acoustic ceiling:
perforated soft wood
fibre insulation 20mm
solid wood lamella 20mm

+2.16m
+2.08m
+1.84m
+1.51m

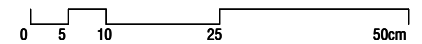
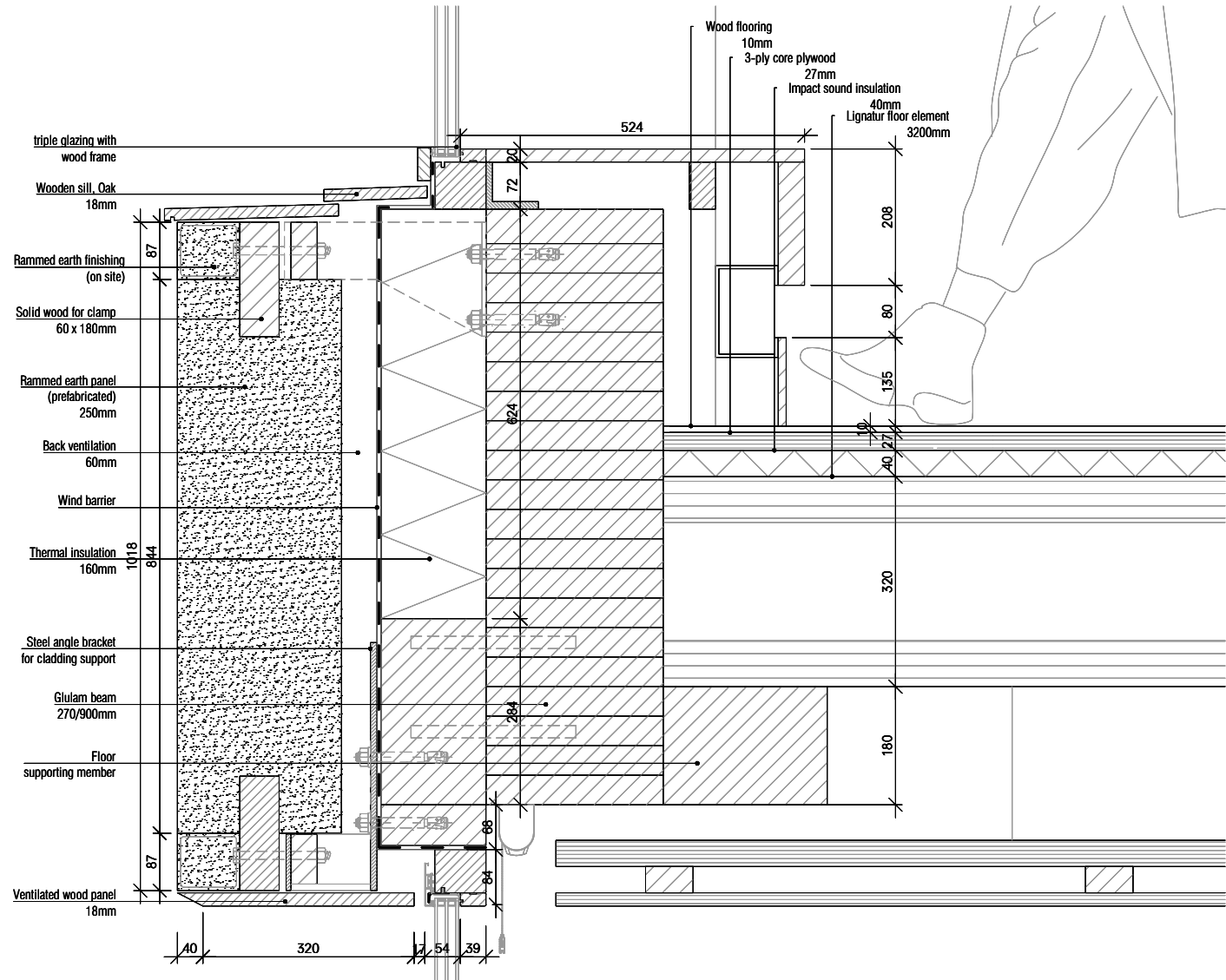


Details 1:5 (not to scale)
D1 CHAMBER'S ROOF EDGE



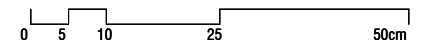
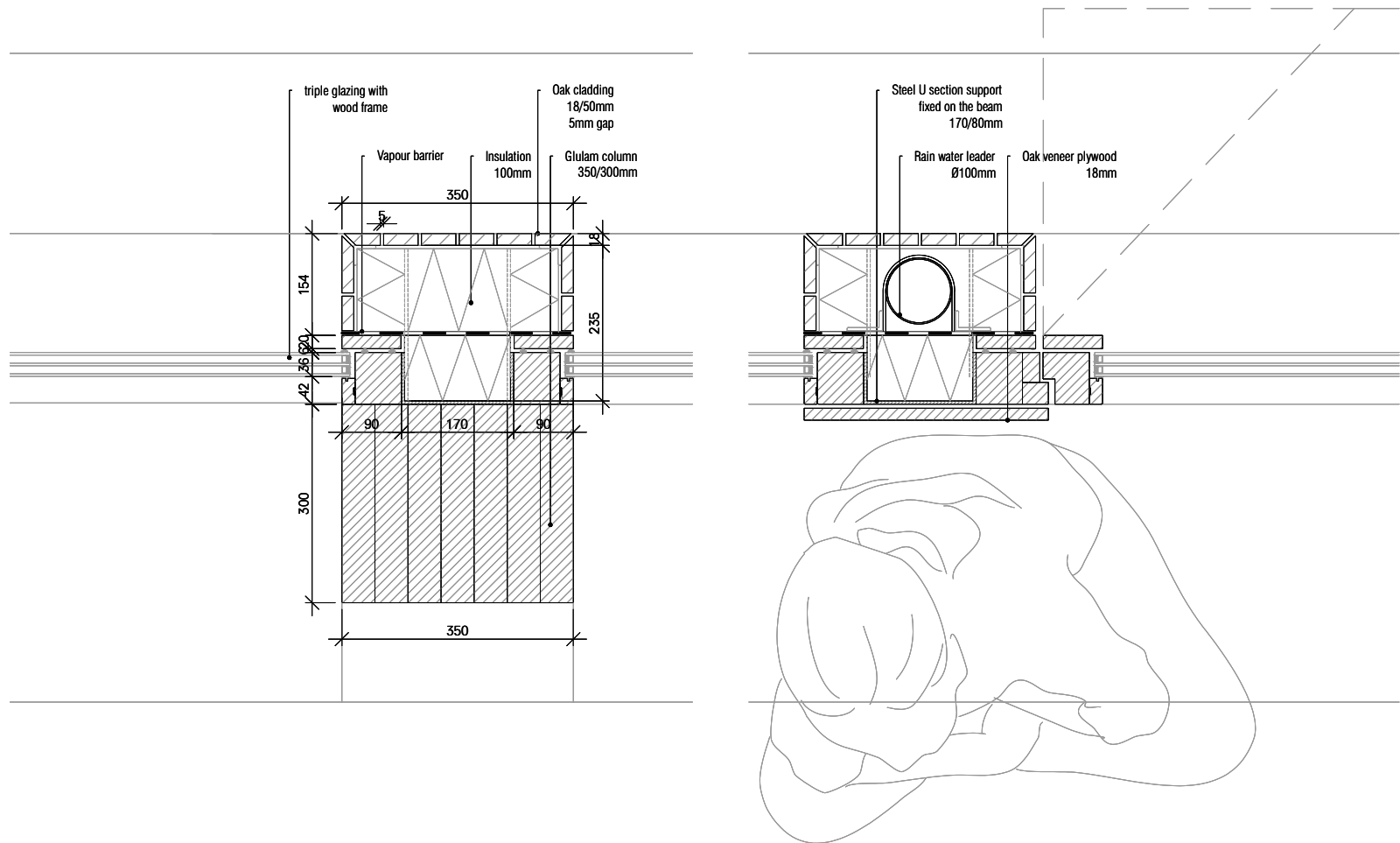
Details 1:5 (not to scale)

D2 DETAIL OF FLOOR-WALL CONNECTION

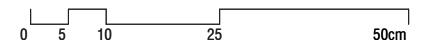
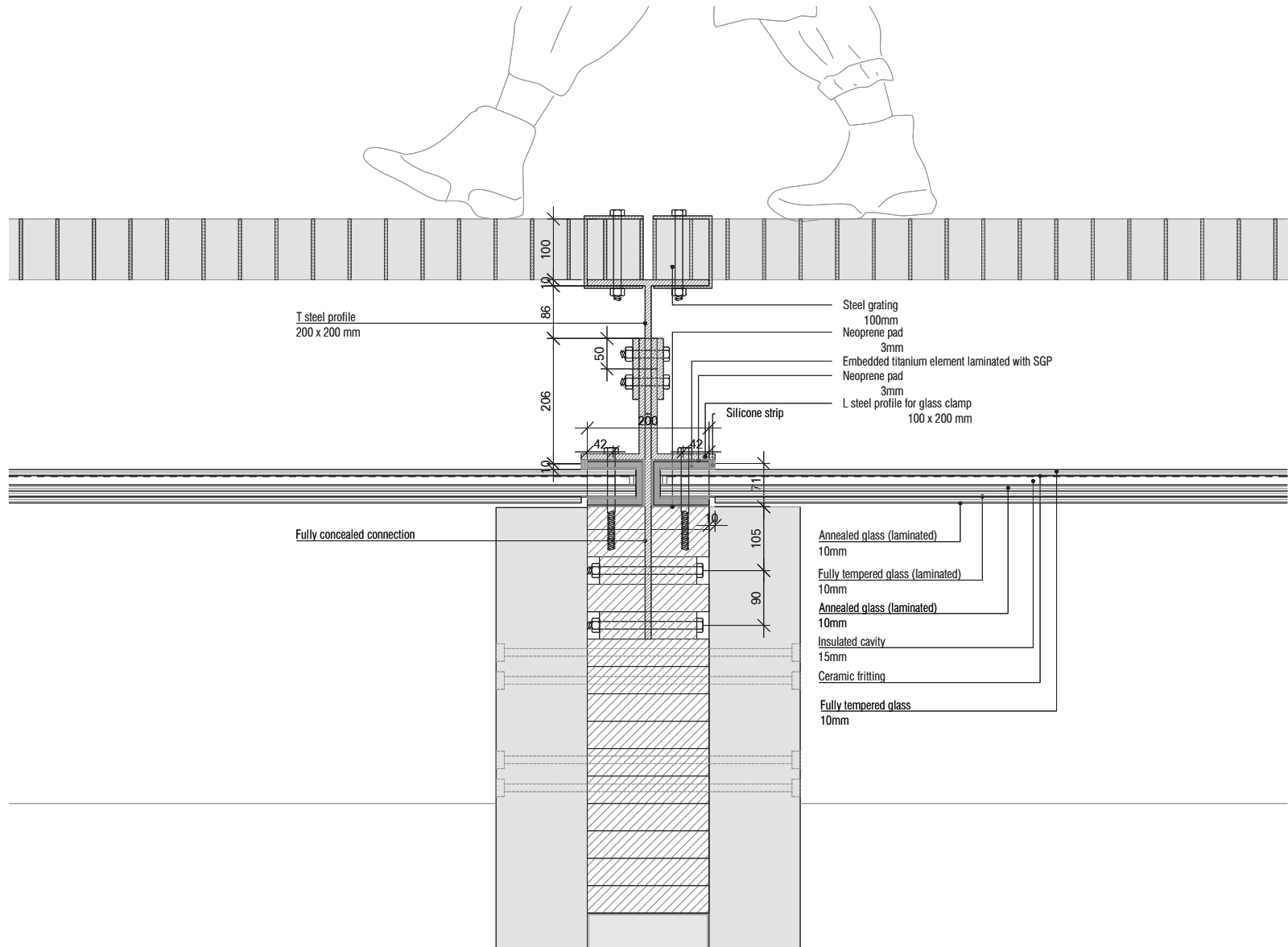


Details 1:5 (not to scale)

D3 HORIZONTAL SECTION FAÇADE



Details 1:5 (not to scale)
D4 ENTRANCE ROOF



Details 1:5 (not to scale)

D5 SOUTH FAÇADE PLINTH

