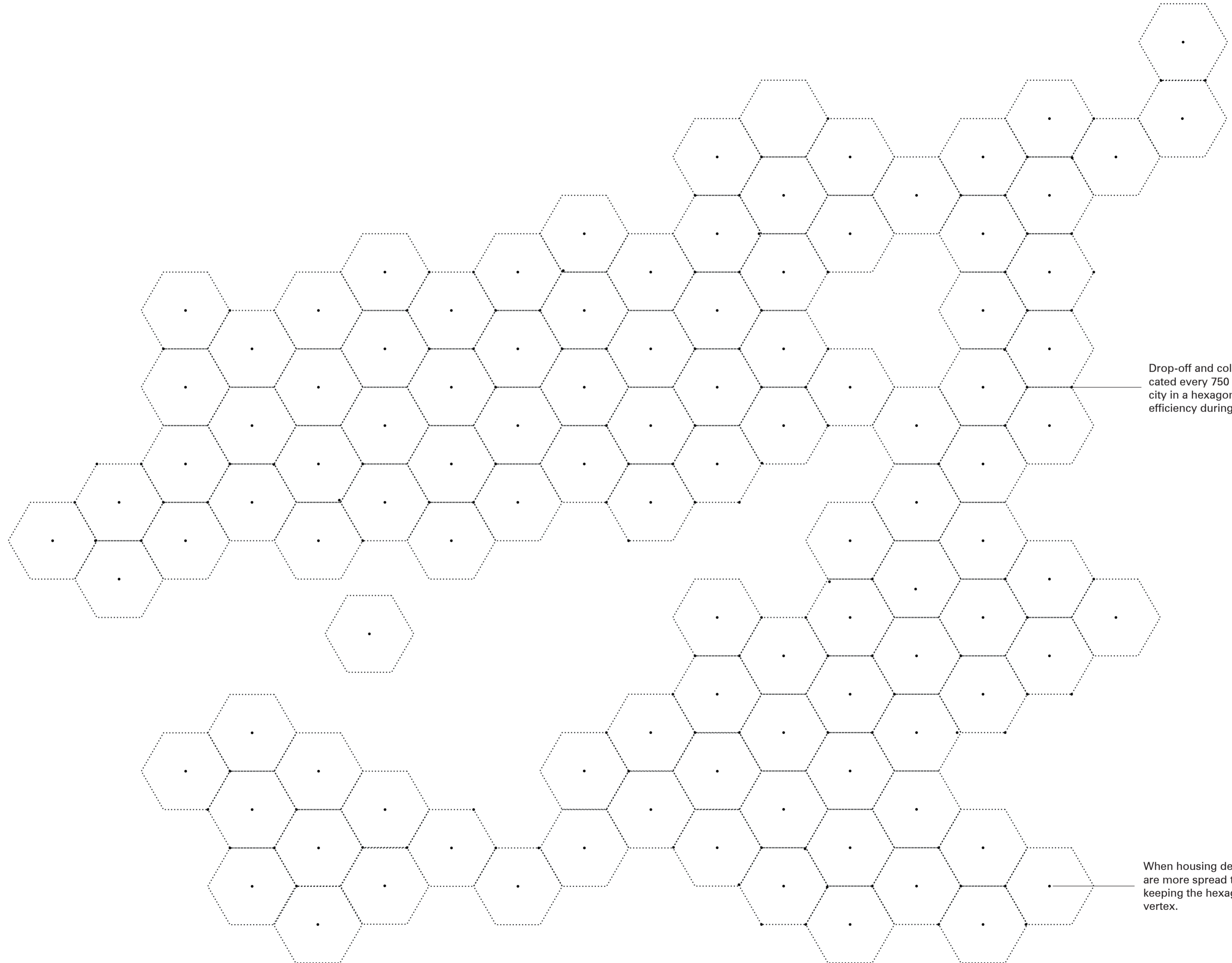


The rental hub processes the entire process of renting garments, including cleaning, steaming, ironing, mending, packaging, and delivery, providing its members with a continuously changing selection of clothing options

# Ready to Rent




Drop-off and collection lockers are located every 750 meters throughout the city in a hexagonal grid, maximizing efficiency during delivery.

When housing density is low, lockers are more spread throughout the city keeping the hexagonal grid and its vertex.



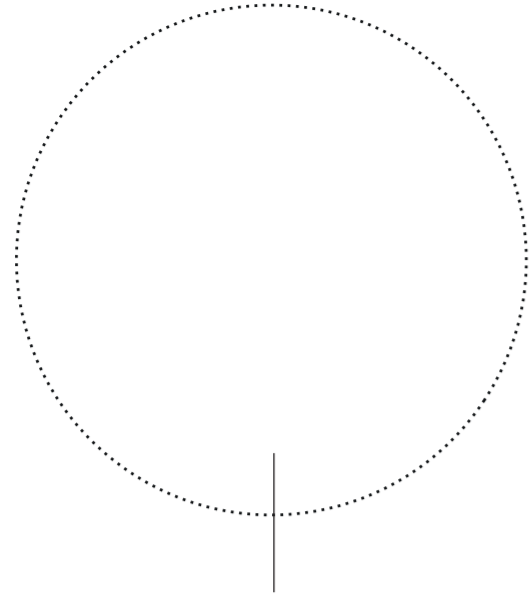
Rental Lockers Location  
1:75,000



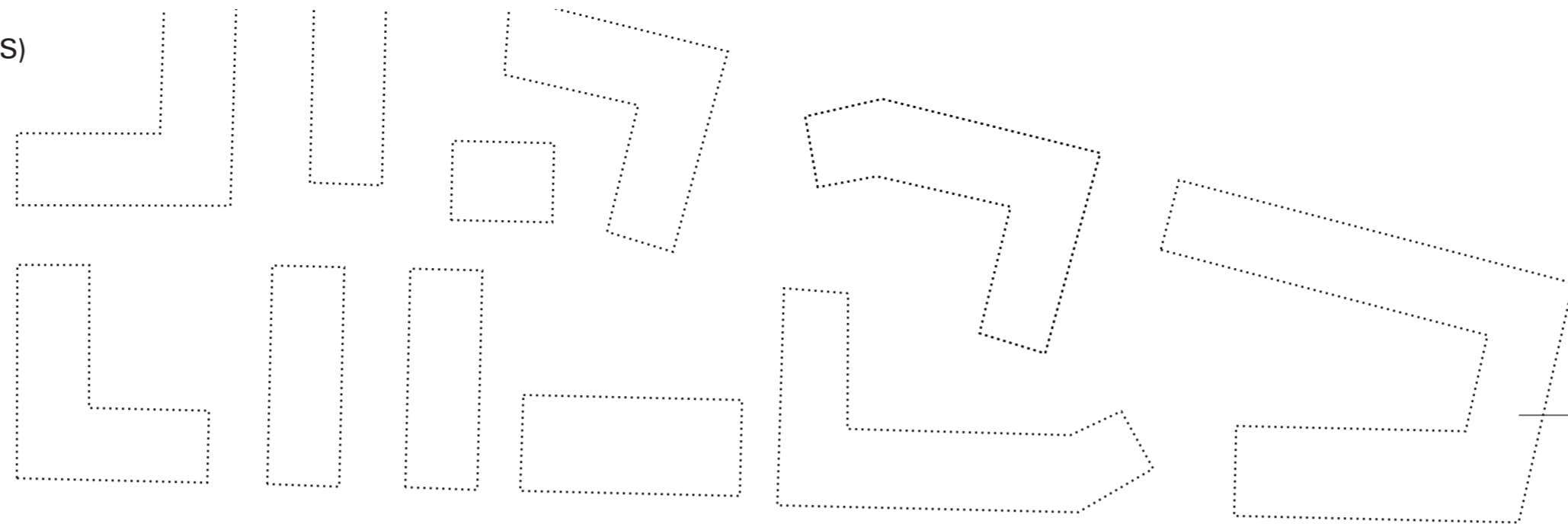
- 1 Ready to Rent
- 2 Rotterdam Centraal
- 3 Schiedam
- 4 Vlaardingen
- 5 Barendrecht
- 6 Rhoon

- Hub Lockers
- Pick-up radius (750m)
- High Housing Density
- ▨ Medium Housing Density
- ▧ Low Density Housing

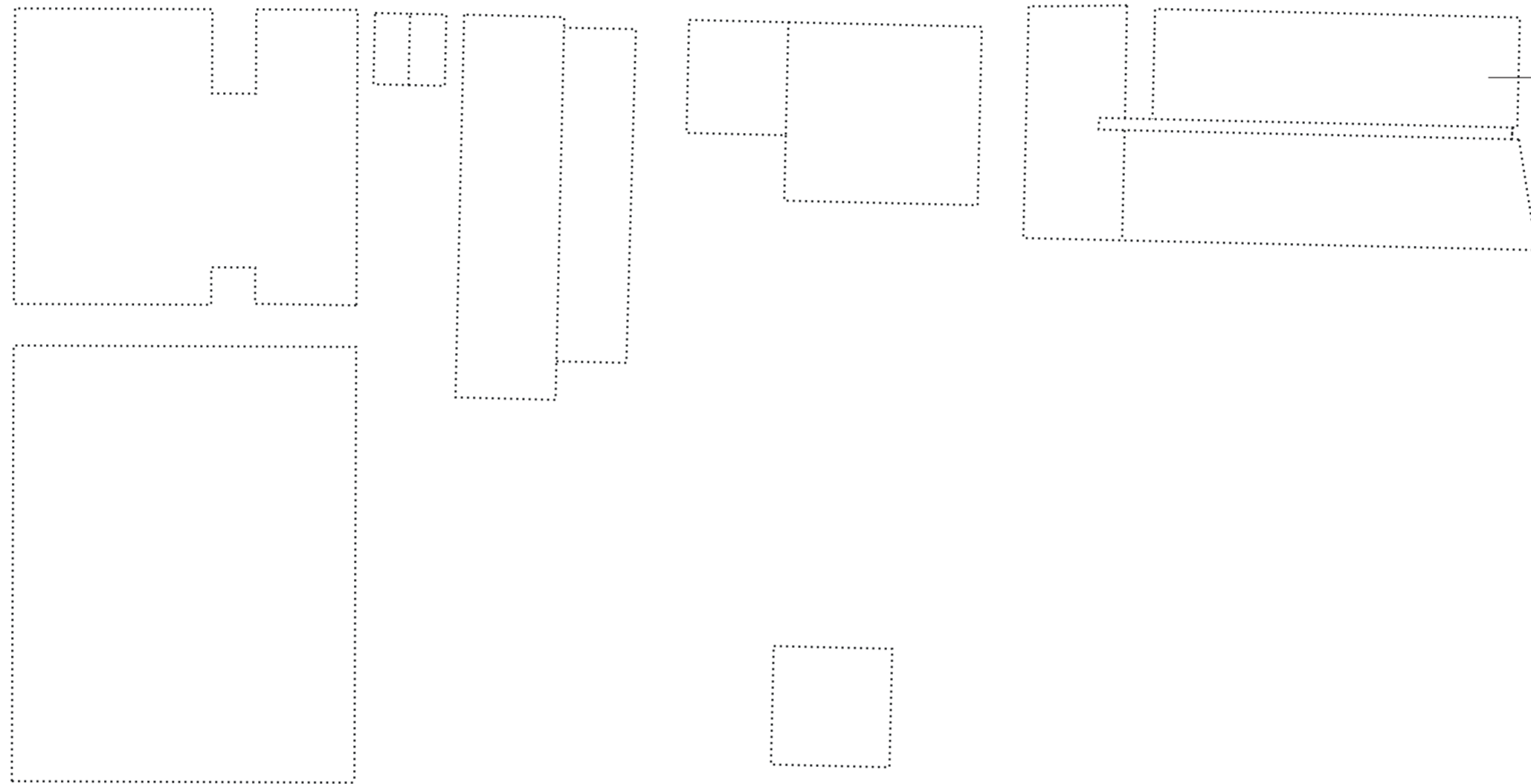
0 0.5 1 2 Km



The Ferro Gasholder—originally used to hold gas for Rotterdam’s streetlights—is now an iconic building in M4H.

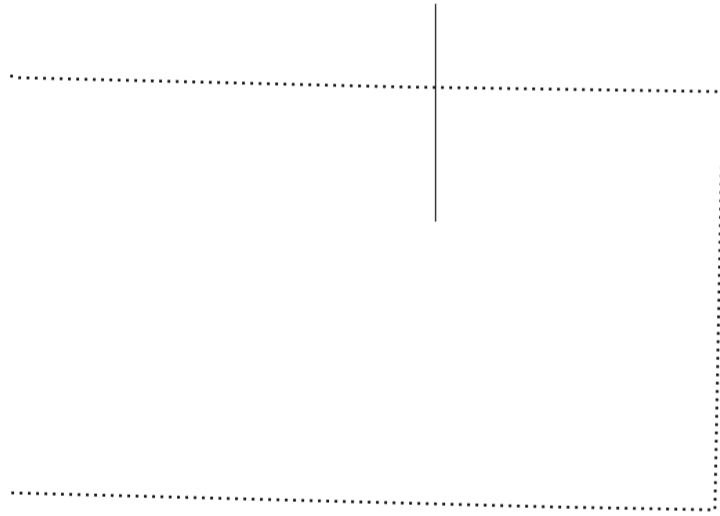


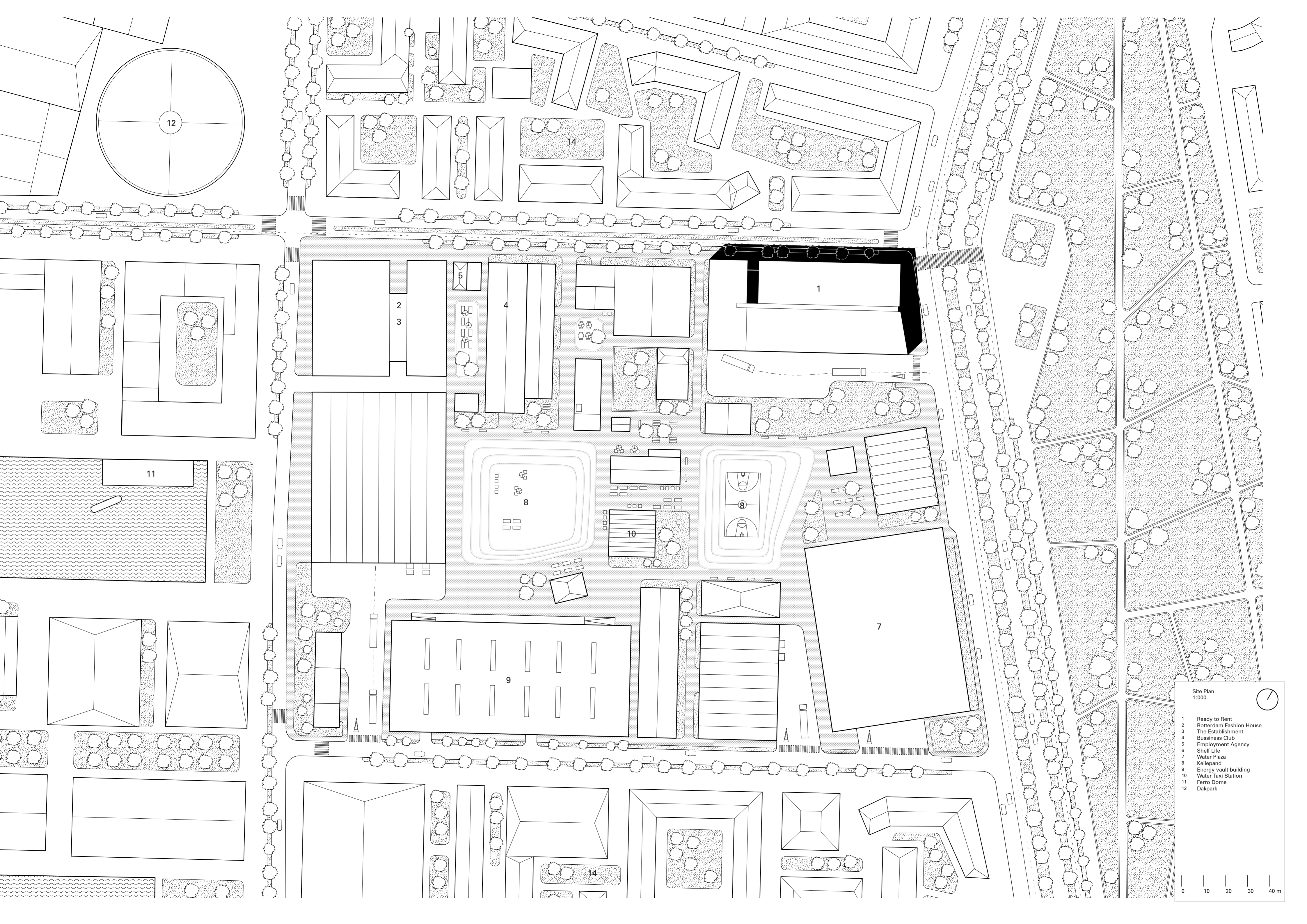
Future housing around M4H emphasizes shared living and facilities residential developments that incorporate attractive green spaces.



Ready to Rent is located on the North corner of Rotterdam’s fashion district facing the high street of the district for its commercial purposes and granting access to the logistic road.



The Merwe-Vierhavens district (M4H) is an old port area. It was once one of the largest fruit ports in the world.

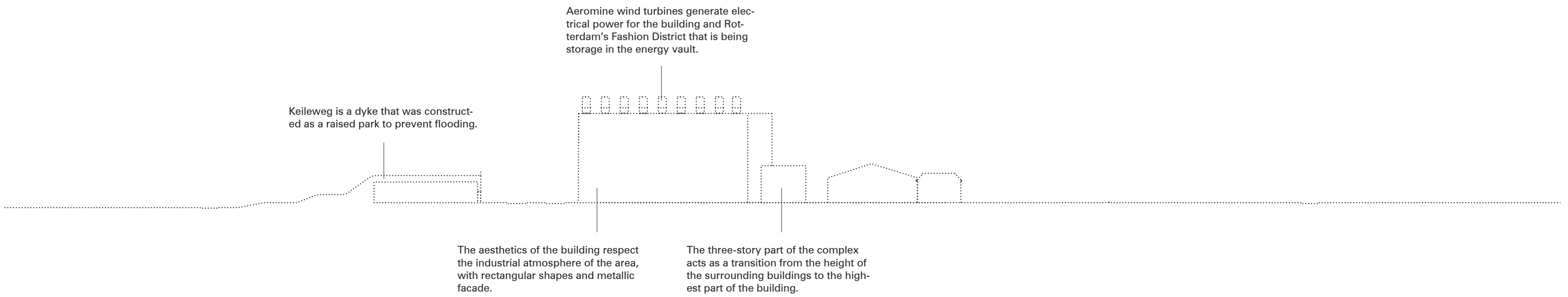




Site Plan  
1:000

- 1 Ready to Rent
- 2 Rotterdam Fashion House
- 3 The Establishment
- 4 Business Club
- 5 Employment Agency
- 6 Shelf Life
- 7 Water Plaza
- 8 Kailegand
- 9 Energy vault building
- 10 Water Taxi Station
- 11 Ferro Dome
- 12 Dakpark







1

2

3

4

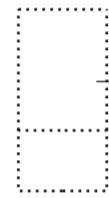
5

6

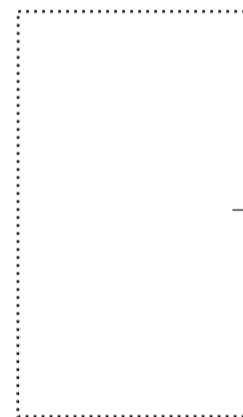
District Elevation  
1:1000

- 1 DakPark
- 2 Ready to Rent
- 3 Bitter Club
- 4 The Establishment
- 5 Bussiness Club
- 6 Fashion House Rotterdam

0 10 20 30 40 m



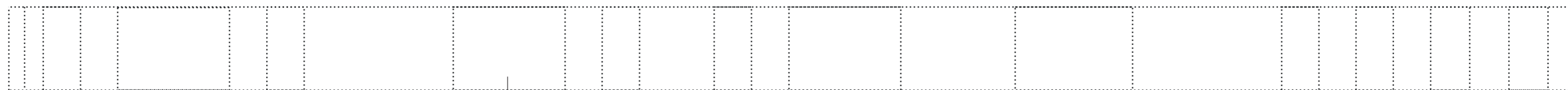
Aeromine wind turbines generate electrical power for the building and Rotterdam's Fashion District that is being stored in the energy vault.



The building exterior is designed to give glimpses of the internal operations, preventing the typical "closed box" appearance often seen in automated buildings.



The robot's elevator is a totally transparent glass curtain wall showcasing the movement of products within the building.



The ground floor is designed to have the appearance of a traditional retail space with large storefronts, and also incorporates modern technology such as LED screens to draw in pedestrians.



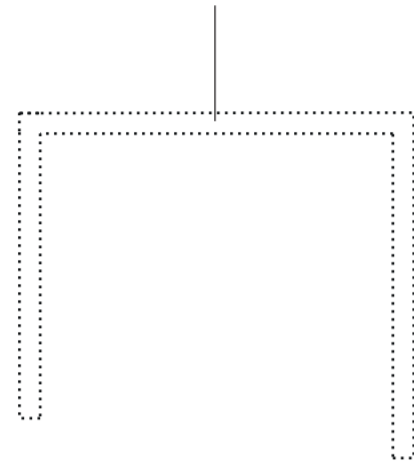


West Elevation  
1:200

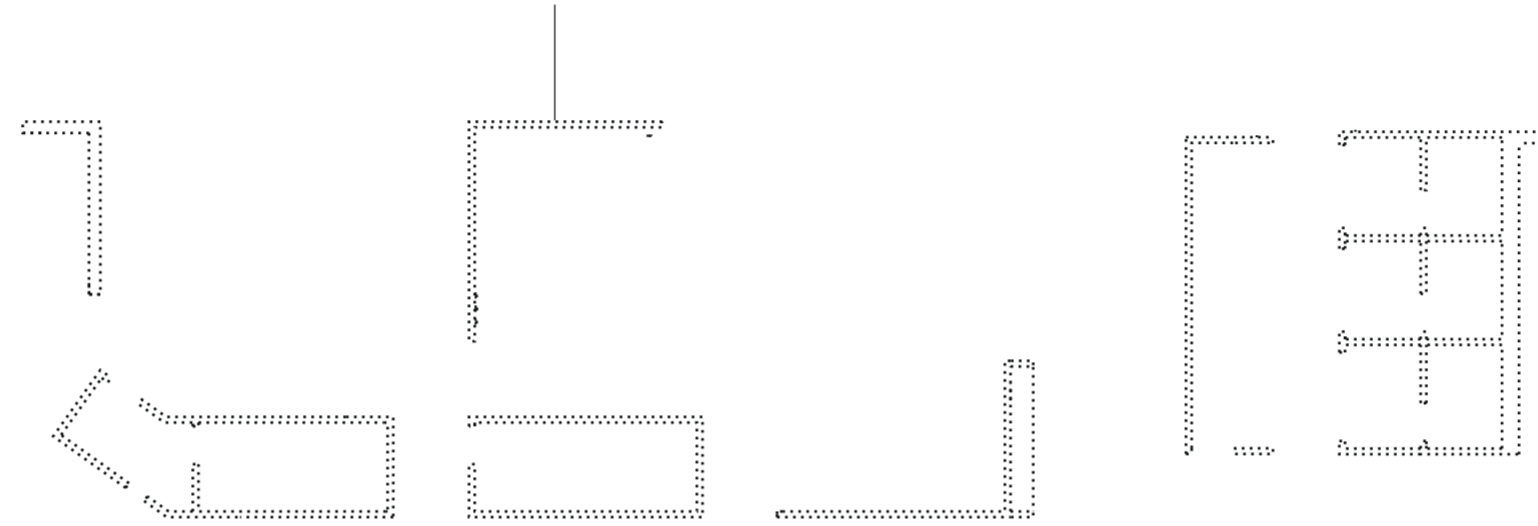
- 1 Store Entrance
- 2 Storefront
- 3 Hub Lockers
- 4 Metallic Cladding
- 5 Store Sign
- 6 Led Screen
- 7 Glass Wall
- 8 Wind Turbine

0 1 2 3 4 m

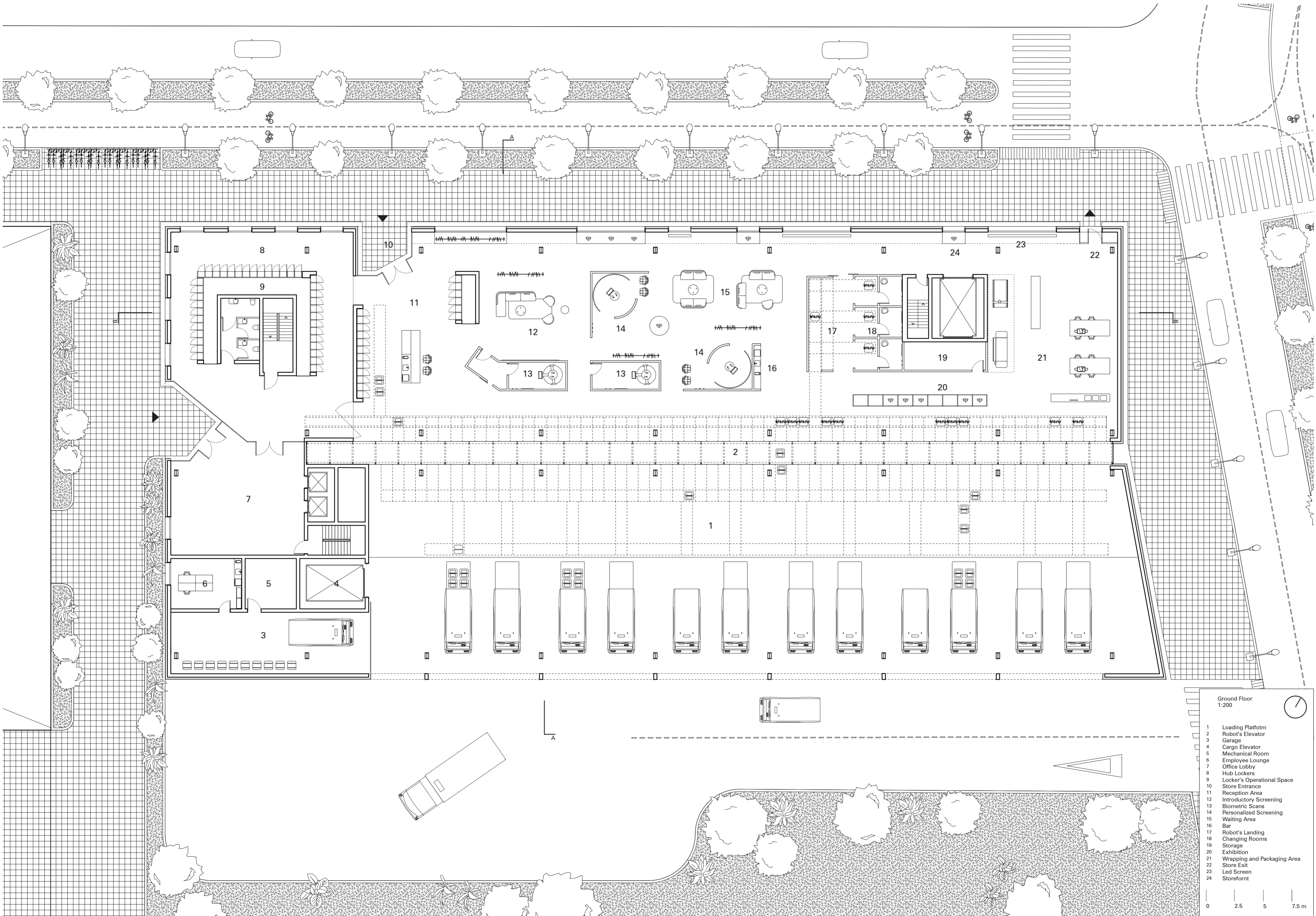
Rental drop-off and collection lockers are points of transfer for rental products where members can access with a digital code to receive and return their rental garments.



In the showroom members can schedule a personalized fitting experience where they follow a sequence of spaces – biometric scans, personalized screen, fitting room and packaging – that replace the traditional retail settings.

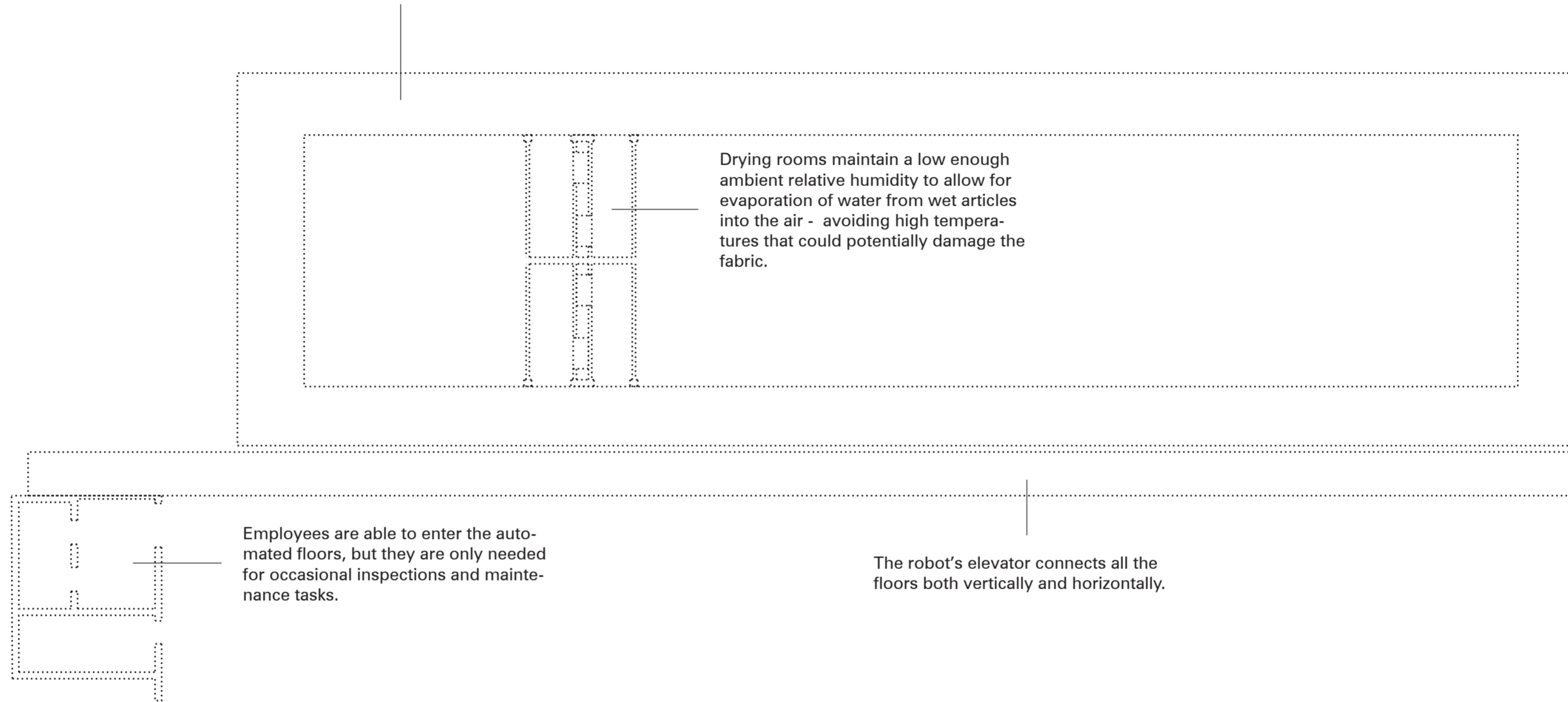


The central robot's elevator acts as the spine of the building and divides the ground floor into two parts – the shopping floor in one side and the logistic zone on the other.



- Ground Floor  
1:200
- 1 Loading Platform
  - 2 Robot's Elevator
  - 3 Garage
  - 4 Cargo Elevator
  - 5 Mechanical Room
  - 6 Employee Lounge
  - 7 Hub Lockers
  - 8 Office Lobby
  - 9 Locker's Operational Space
  - 10 Store Entrance
  - 11 Reception Area
  - 12 Introductory Screening
  - 13 Biometric Scans
  - 14 Personalized Screening
  - 15 Waiting Area
  - 16 Bar
  - 17 Robot's Landing
  - 18 Changing Rooms
  - 19 Storage
  - 20 Exhibition
  - 21 Wrapping and Packaging Area
  - 22 Store Exit
  - 23 Led Screen
  - 24 Storefront
- 0 2.5 5 7.5 m

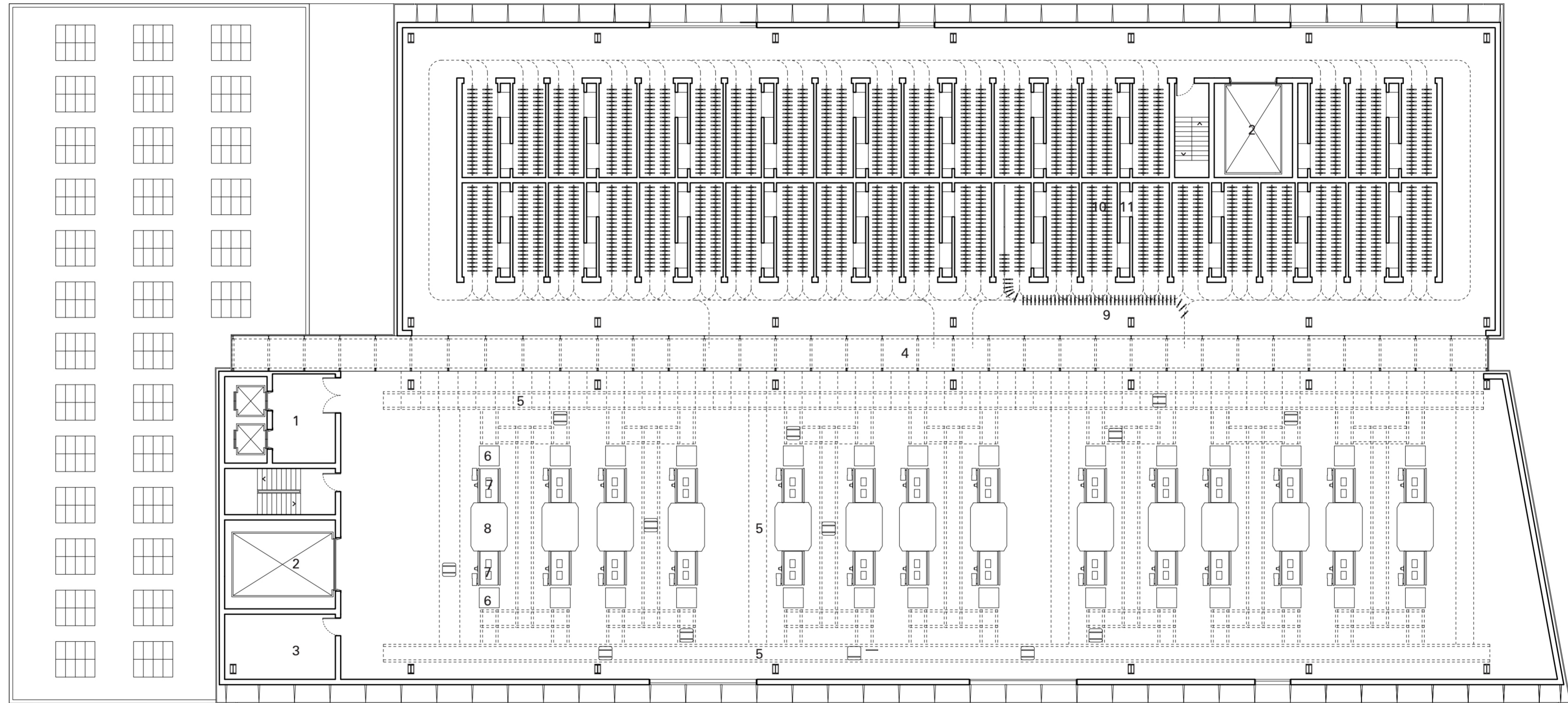
The floors follow a ring-shaped circulation pattern, with all the machinery located in the center and the robot rails on the perimeter.



Drying rooms maintain a low enough ambient relative humidity to allow for evaporation of water from wet articles into the air - avoiding high temperatures that could potentially damage the fabric.

Employees are able to enter the automated floors, but they are only needed for occasional inspections and maintenance tasks.

The robot's elevator connects all the floors both vertically and horizontally.

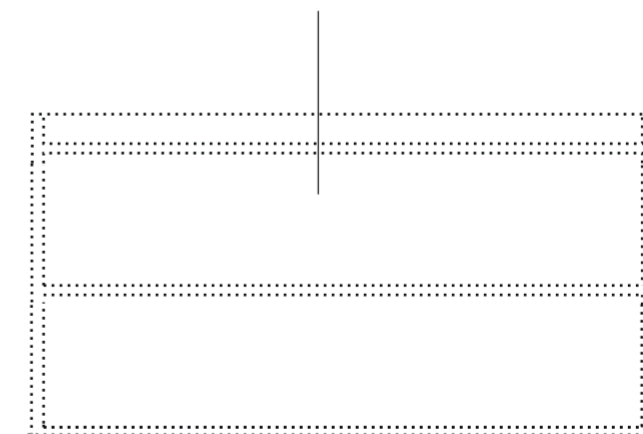


Third Floor  
1:200

1 Staff Access  
2 Cargo Elevator  
3 Mechanical Room  
4 Robot's Elevator  
5 Robot's Rail  
6 Trasmission Robot - Belt  
7 Conveyor Belt  
8 Unpackaging Station  
9 Automated hangers  
10 Drying Rooms  
11 Deshumidifayer

0 2.5 5 7.5 m

In addition to its automation, this building has a section that is equipped and comfortable for human use where employees perform tasks that require creativity and reasoning.

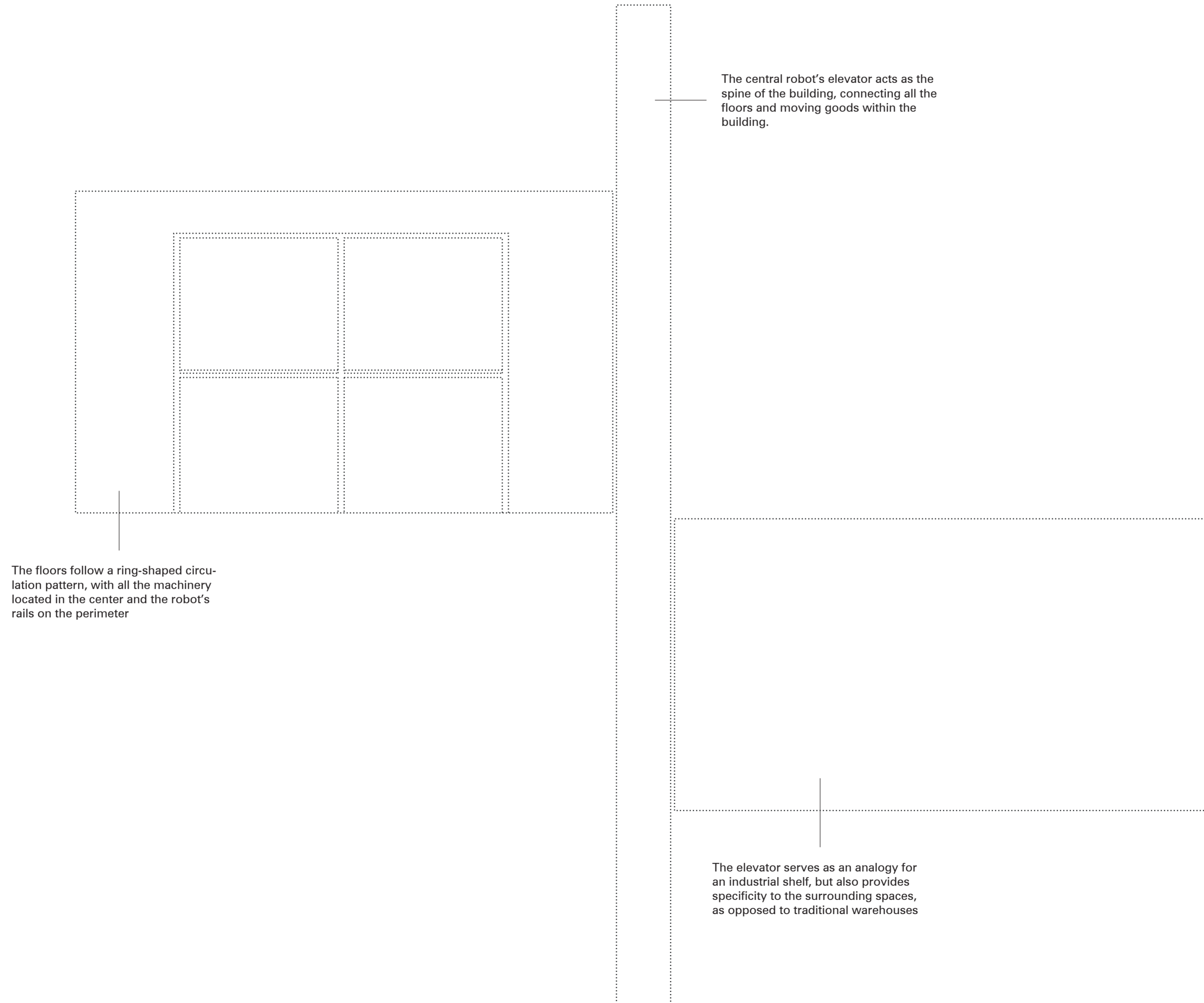




Longitudinal Section  
1:200

- 1 Hub Lockers
- 2 Photoshoot Studios
- 3 Management Offices
- 4 Repairs Ateliers
- 5 Robot's Elevator
- 6 Store Entrance and Reception
- 7 Introductory Screening
- 8 Bar
- 9 Robot's Landing
- 10 Changing Room
- 11 Exhibition
- 12 Wrapping and Packaging
- 13 Packaging Station
- 14 Steaming Station
- 15 Steaming Pipe
- 16 Steaming Machine
- 17 Automated hangers
- 18 Drying Room
- 19 Dreshmidfayer
- 20 Laundry Station
- 21 Water Recycling Deposit
- 22 Wind Turbine



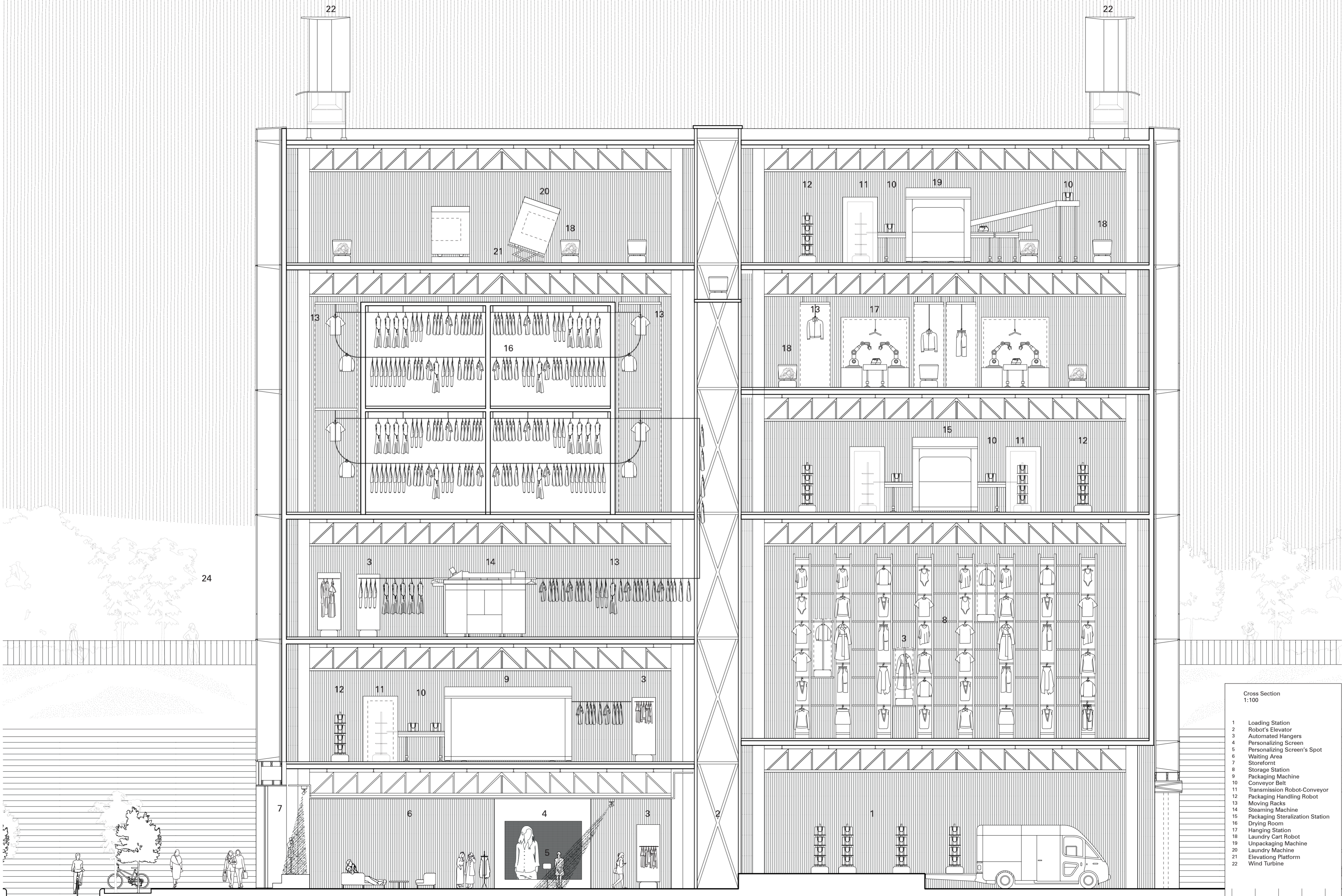


The floors follow a ring-shaped circulation pattern, with all the machinery located in the center and the robot's rails on the perimeter

The central robot's elevator acts as the spine of the building, connecting all the floors and moving goods within the building.

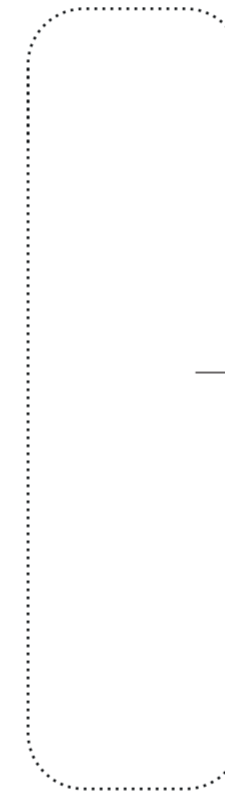
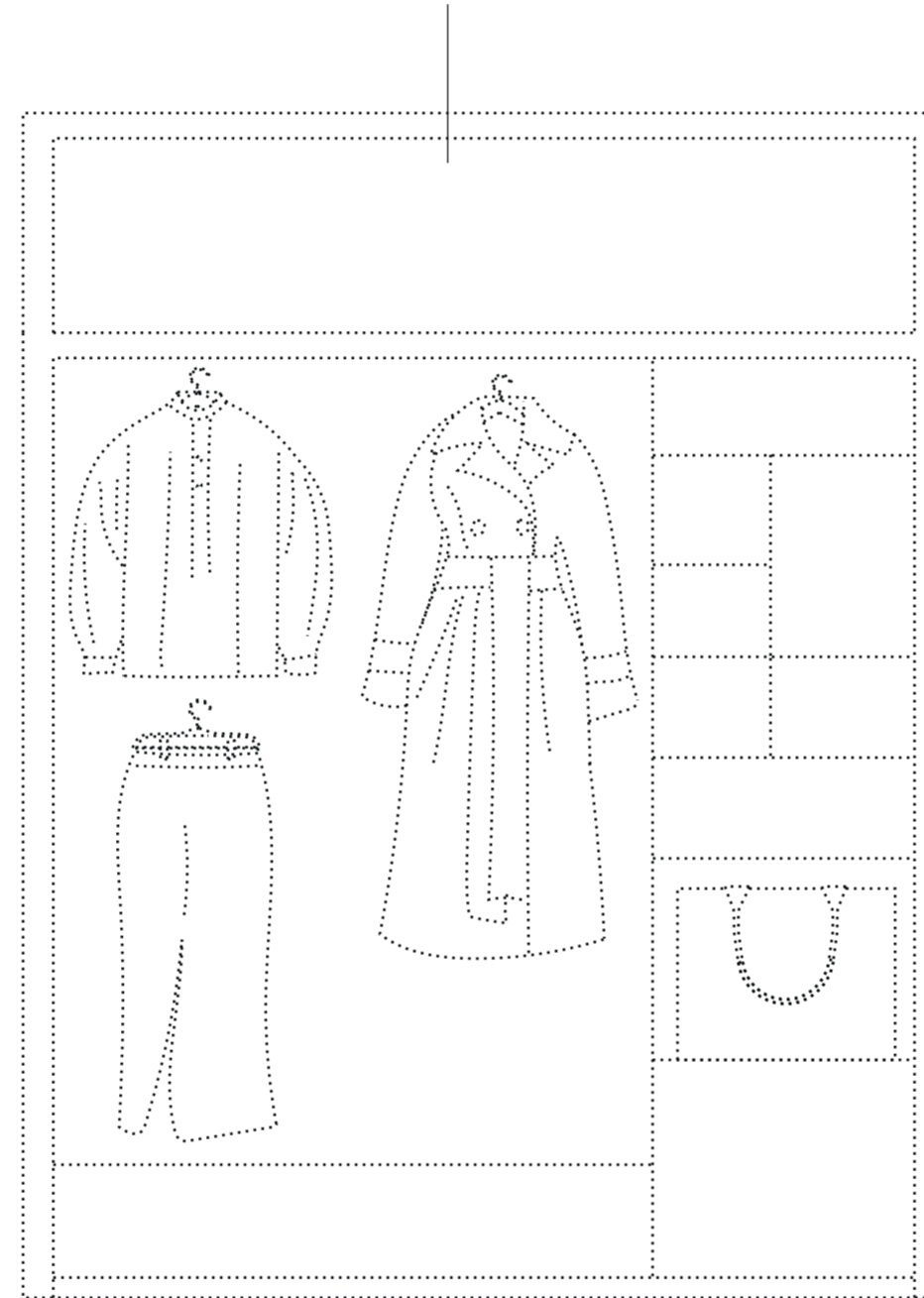
The elevator serves as an analogy for an industrial shelf, but also provides specificity to the surrounding spaces, as opposed to traditional warehouses



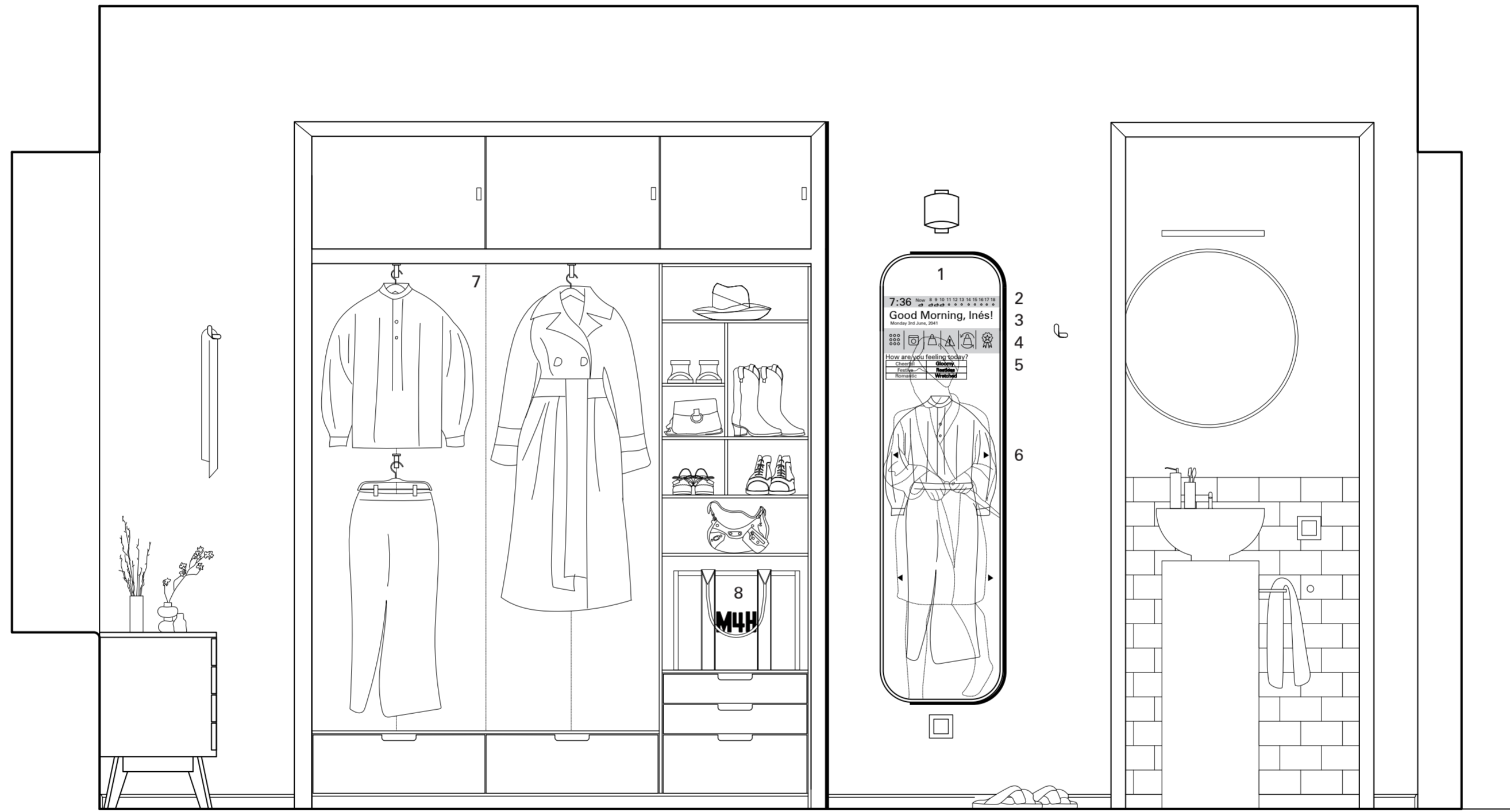


- Cross Section  
1:100
- 1 Loading Station
  - 2 Robot's Elevator
  - 3 Automated Hangers
  - 4 Personalizing Screen
  - 5 Personalizing Screen's Spot
  - 6 Waiting Area
  - 7 Storefront
  - 8 Storage Station
  - 9 Packaging Machine
  - 10 Conveyor Belt
  - 11 Transmission Robot-Conveyor
  - 12 Packaging Handling Robot
  - 13 Moving Racks
  - 14 Steaming Machine
  - 15 Packaging Sterilization Station
  - 16 Drying Room
  - 17 Hanging Station
  - 18 Laundry Cart Robot
  - 19 Unpacking Machine
  - 20 Laundry Machine
  - 21 Elevating Platform
  - 22 Wind Turbine
- 0 1 2 3 4 m

Closets on display reconceptualize individual households as part of shopping experiences, with more spacious closets containing only desirable pieces.



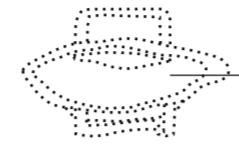
The rental membership provides members with a mirror that has an app interface – which includes all the details about the rented garments, such as what is due to be returned, the member's wish list, and new arrivals to the hub – and also generates an AR image of the member wearing the selected garments.



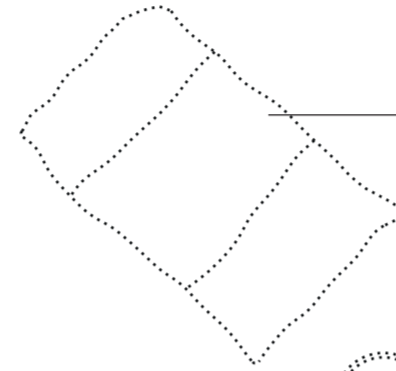
Bedroom Elevation  
1:15

- 1 Mirror with App Interface
- 2 Today's Weather Conditions
- 3 Today's Date
- 4 App Browser
- 5 User Mood
- 6 App Look Suggestion
- 7 Curated Closet on Display
- 8 Ready to Rent Delivery Bag

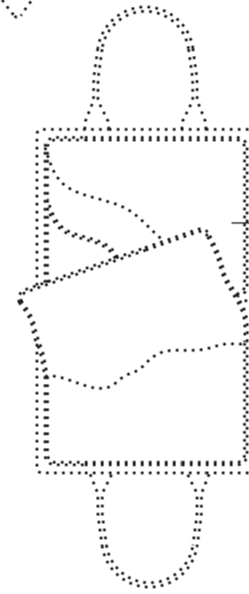
0 .30 .40 .60 m



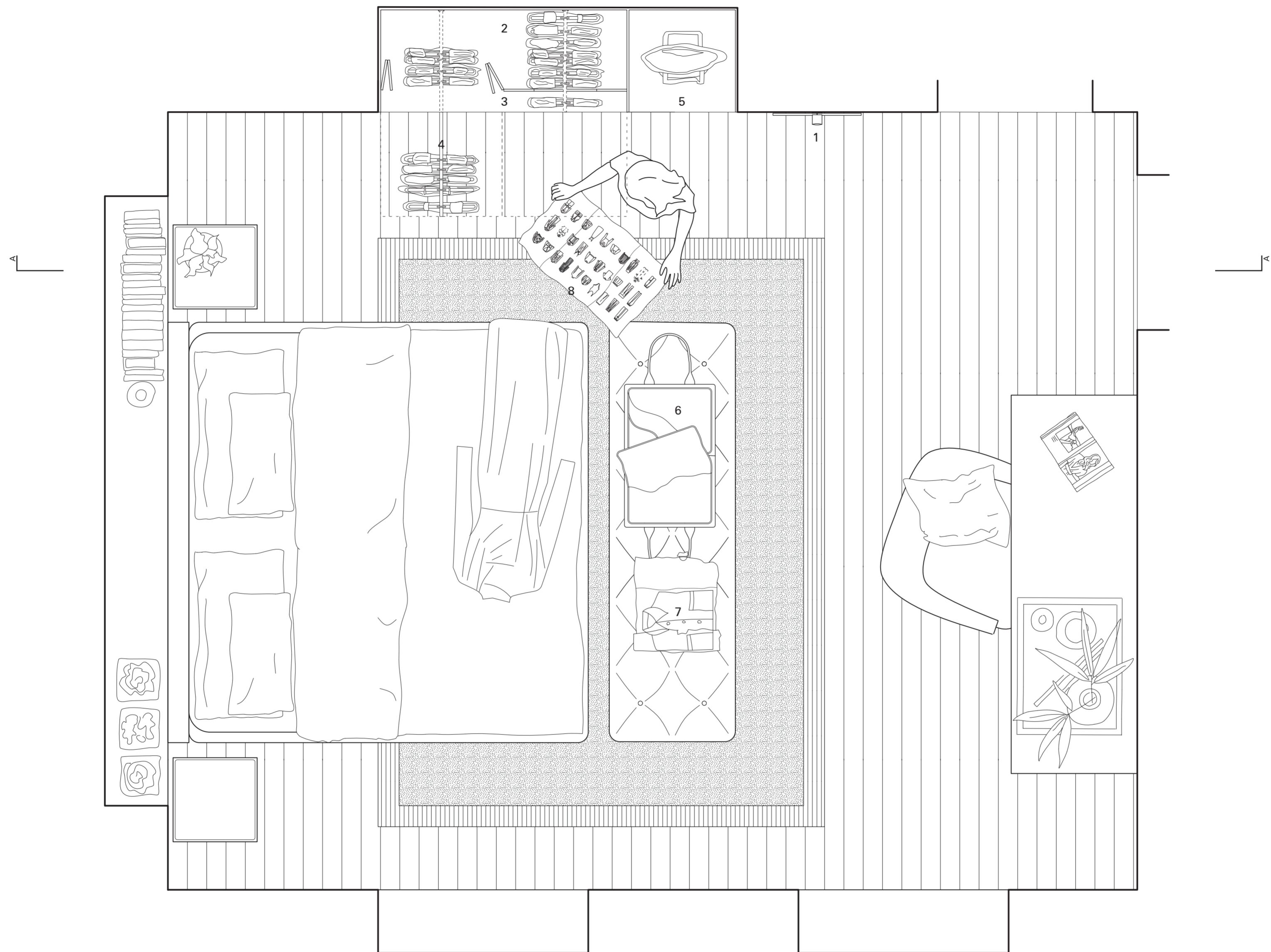
The Ready to Rent bag is a common object found in many households.



The Ready to Rent wrapping tissue paper contains specific advertising information for each member, as it is the only non-returnable item they receive.



Ready to Rent bag is completely openable by zippers, adding performance, desire, and eagerness to the unboxing experience.



Bedroom Floor Plan  
1:15

- 1 Mirror with App interface
- 2 Hidden Closet
- 3 Curated Closet on Display
- 4 Extendable Racks
- 5 Ready to Rent Bag's Shelf
- 6 Unfolded Ready to Rent Bag
- 7 Tissue Paper Wrapping
- 8 Personalized Wrapping

0 .30 .40 .60 m