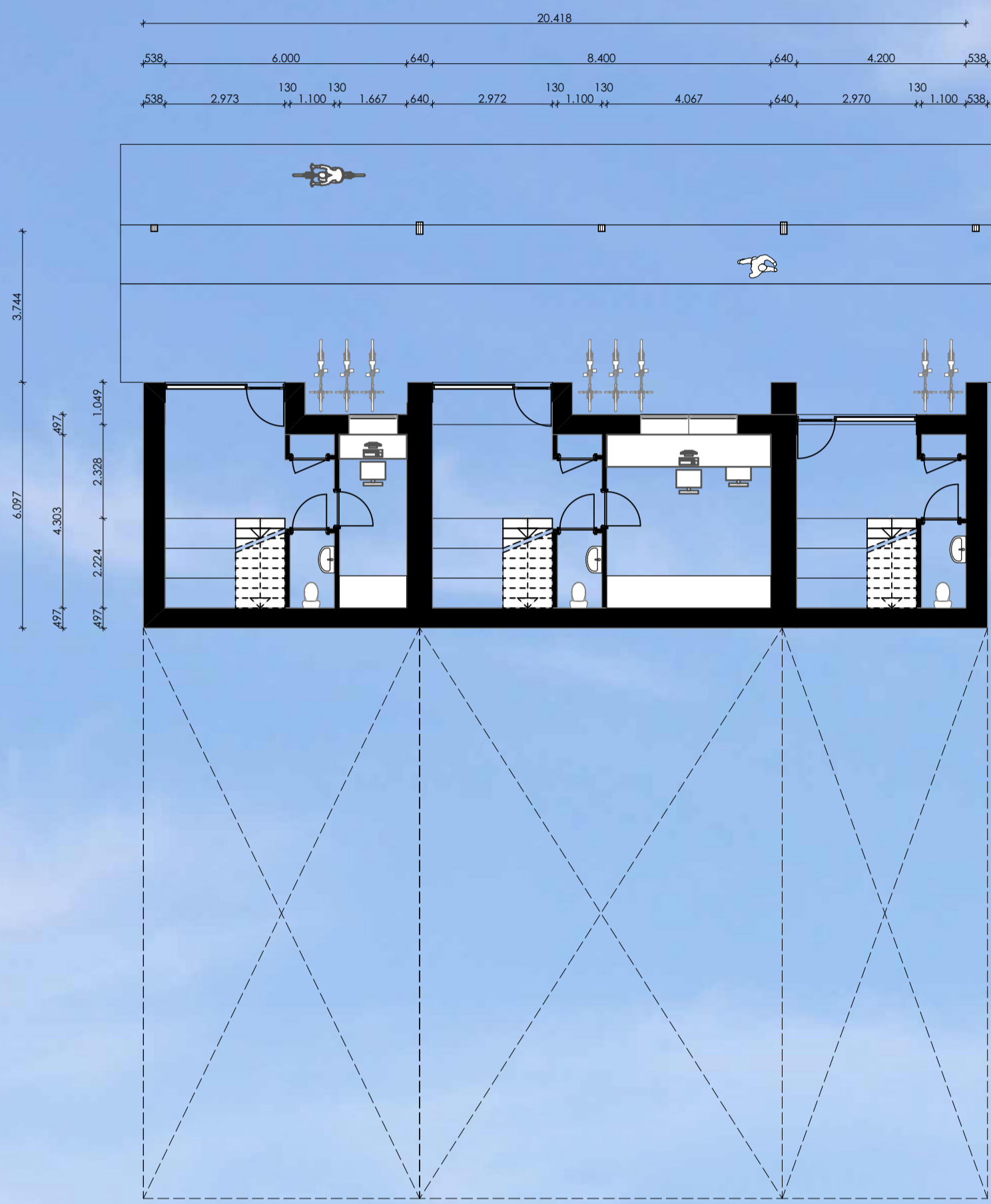
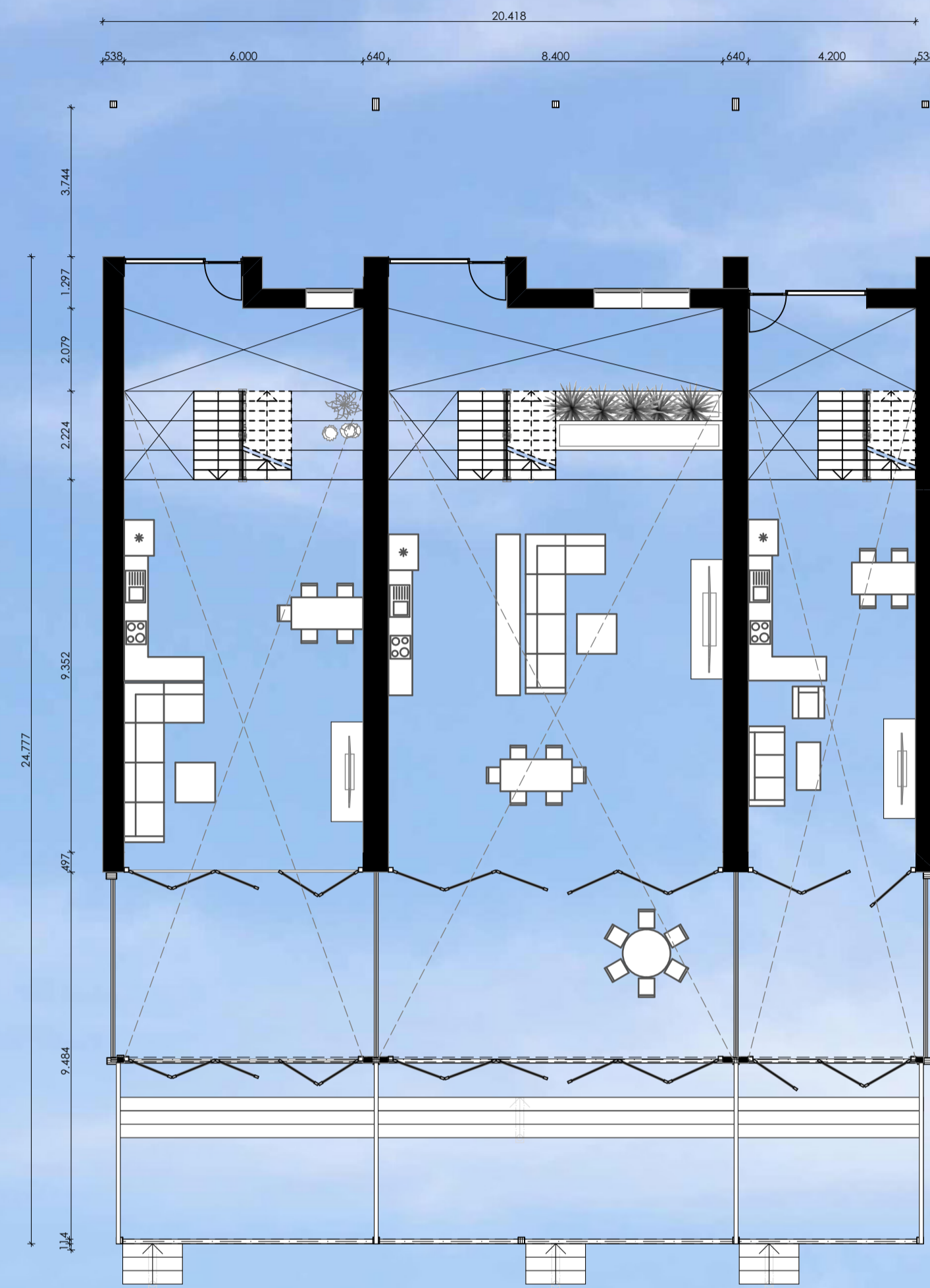


Together on the edge between land and sea | **The mudflat symbionts**

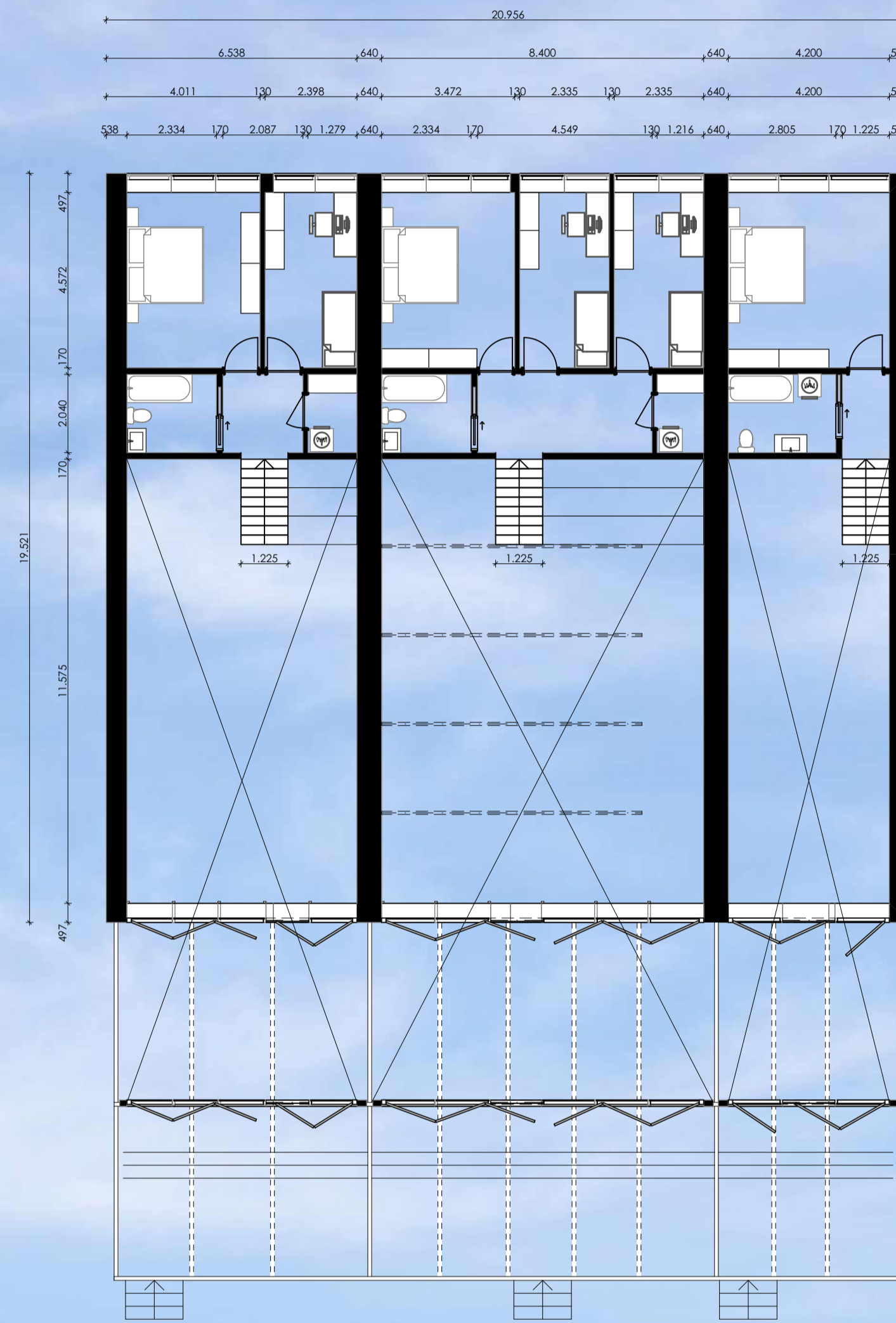
First floor (P=6070)



Second floor (P=7670)



Third floor (P=9270)



Facades

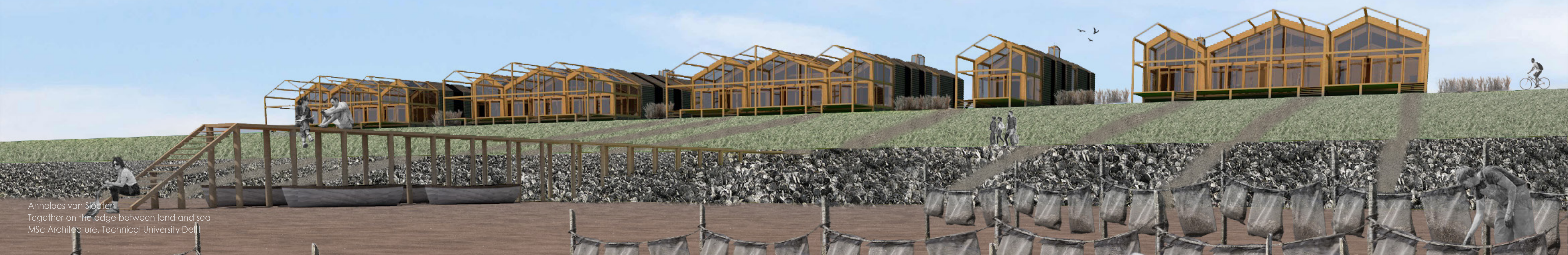
East facade

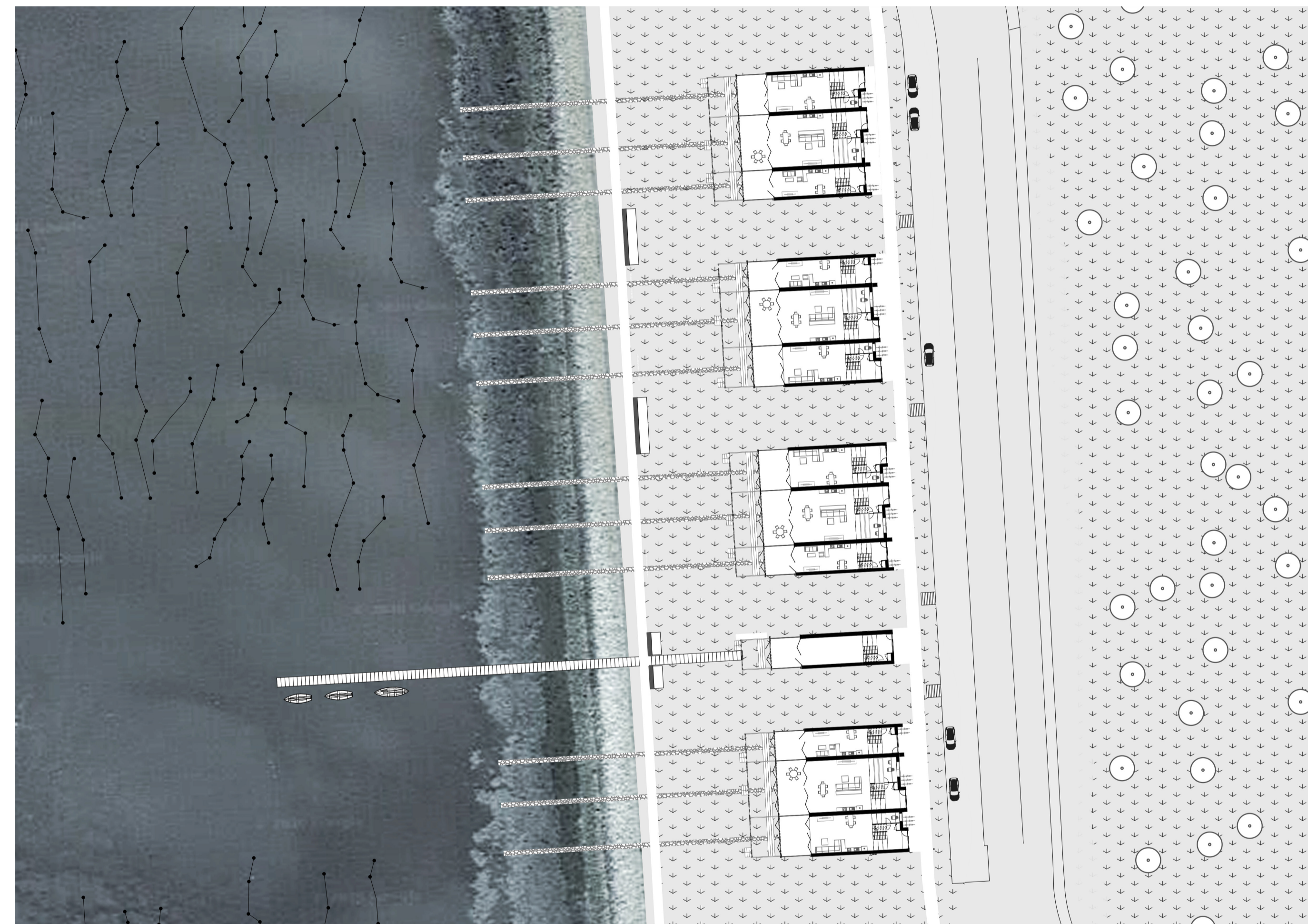
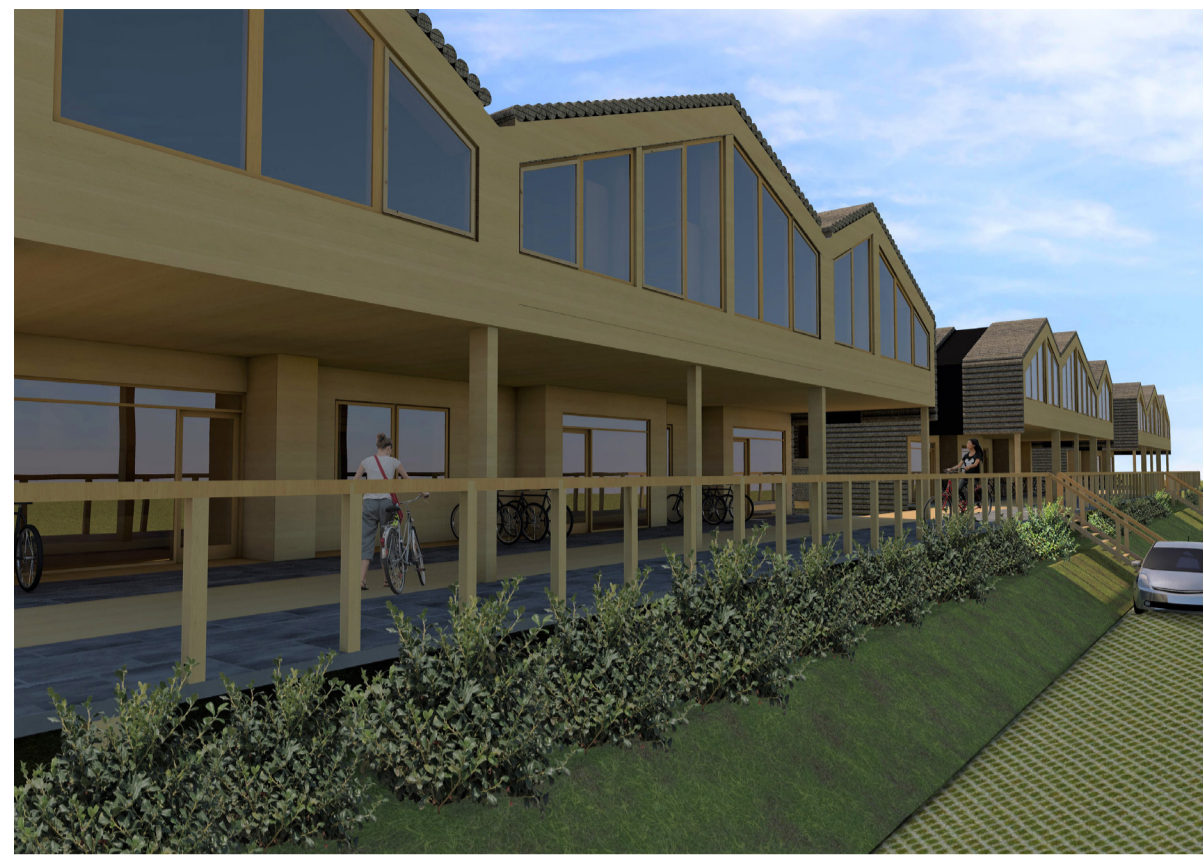


North and South facade

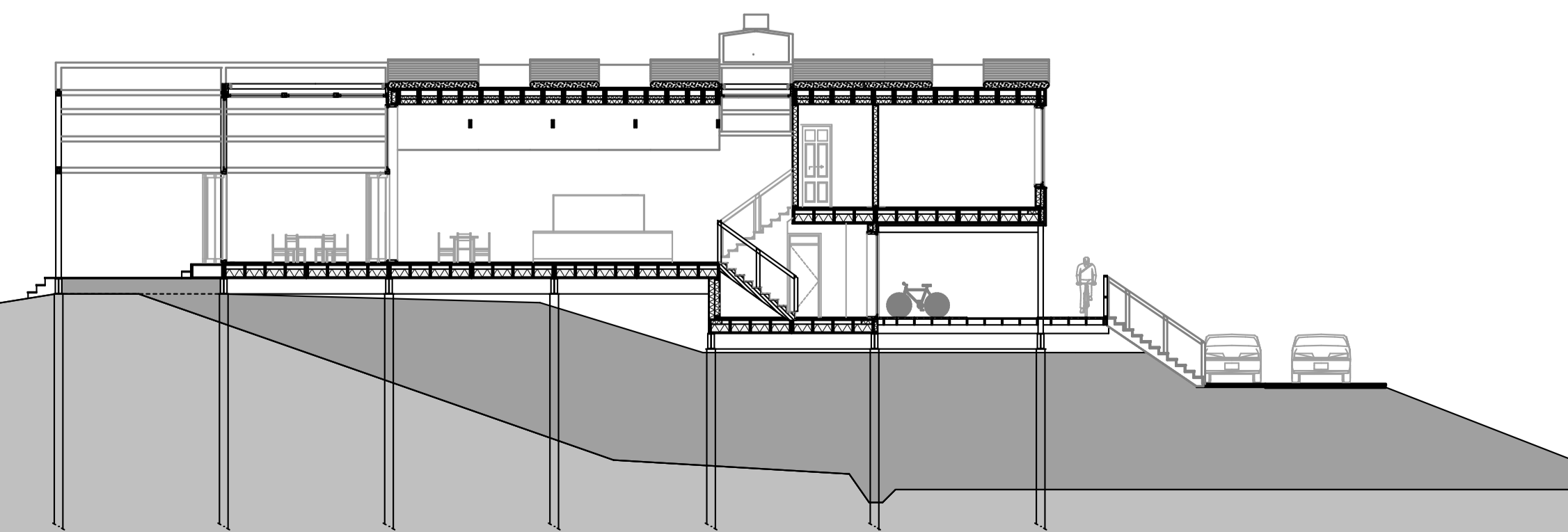
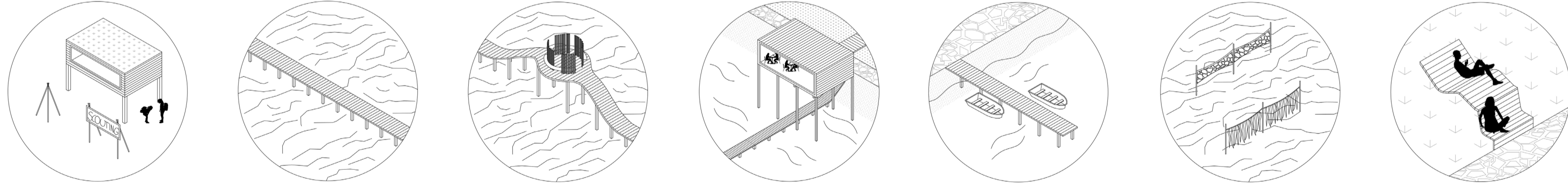


West facade

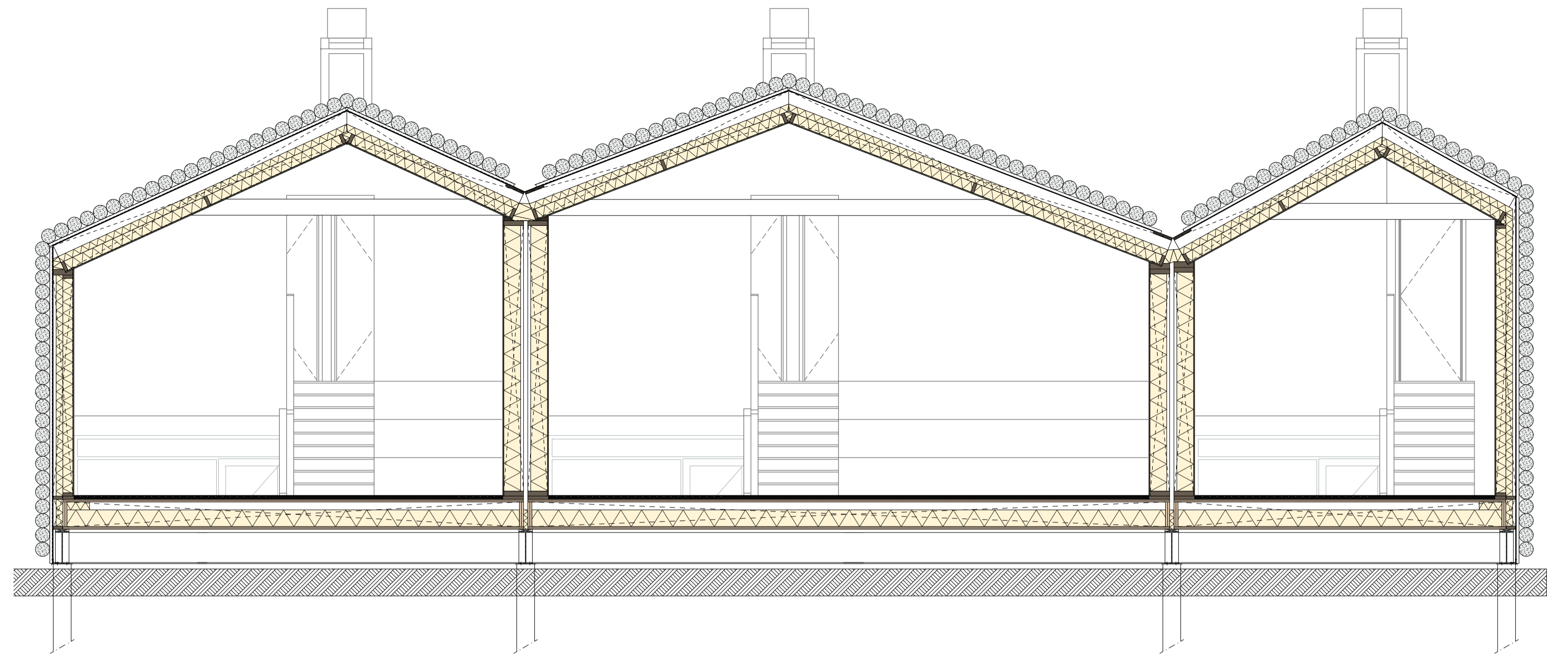
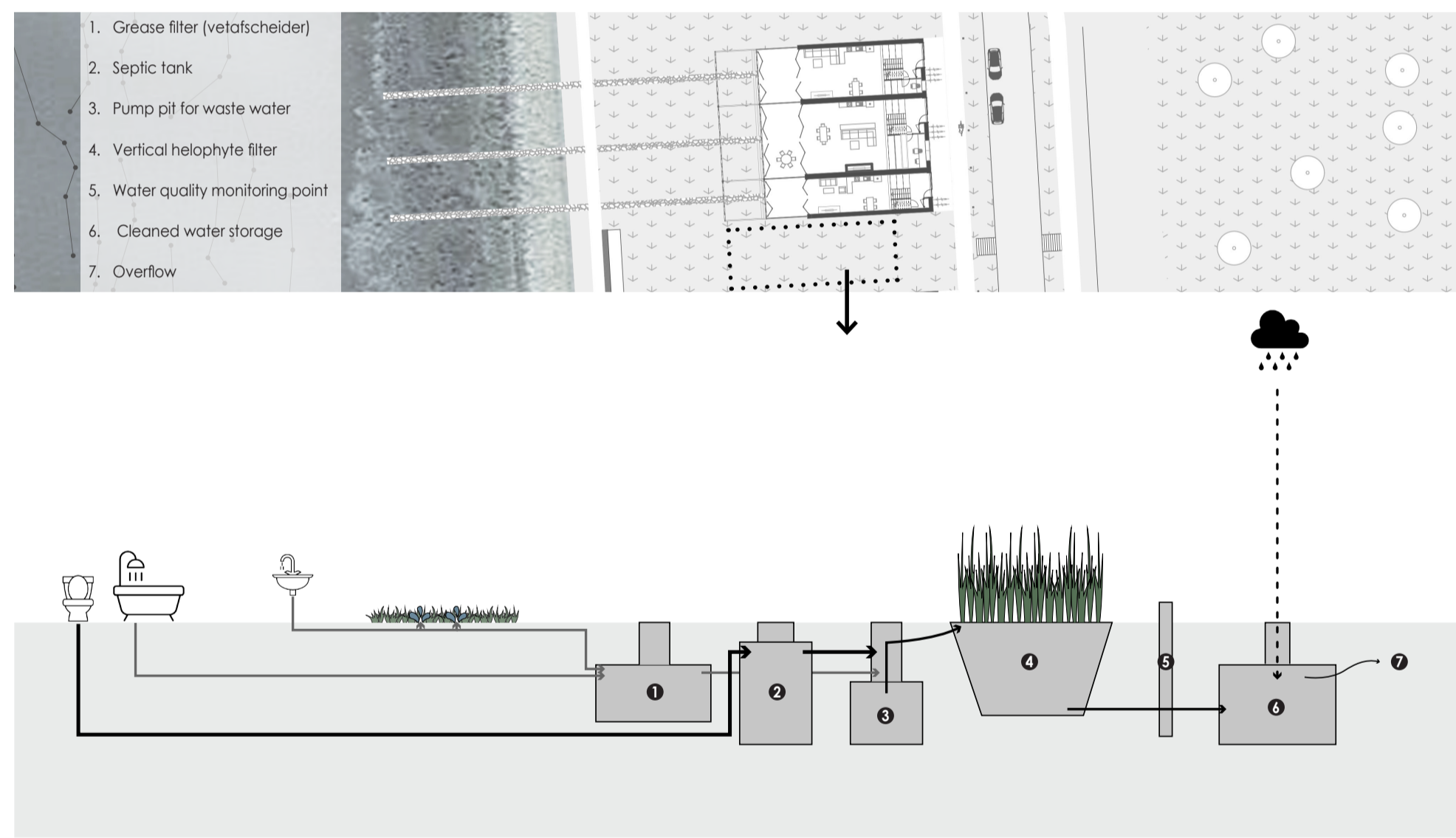
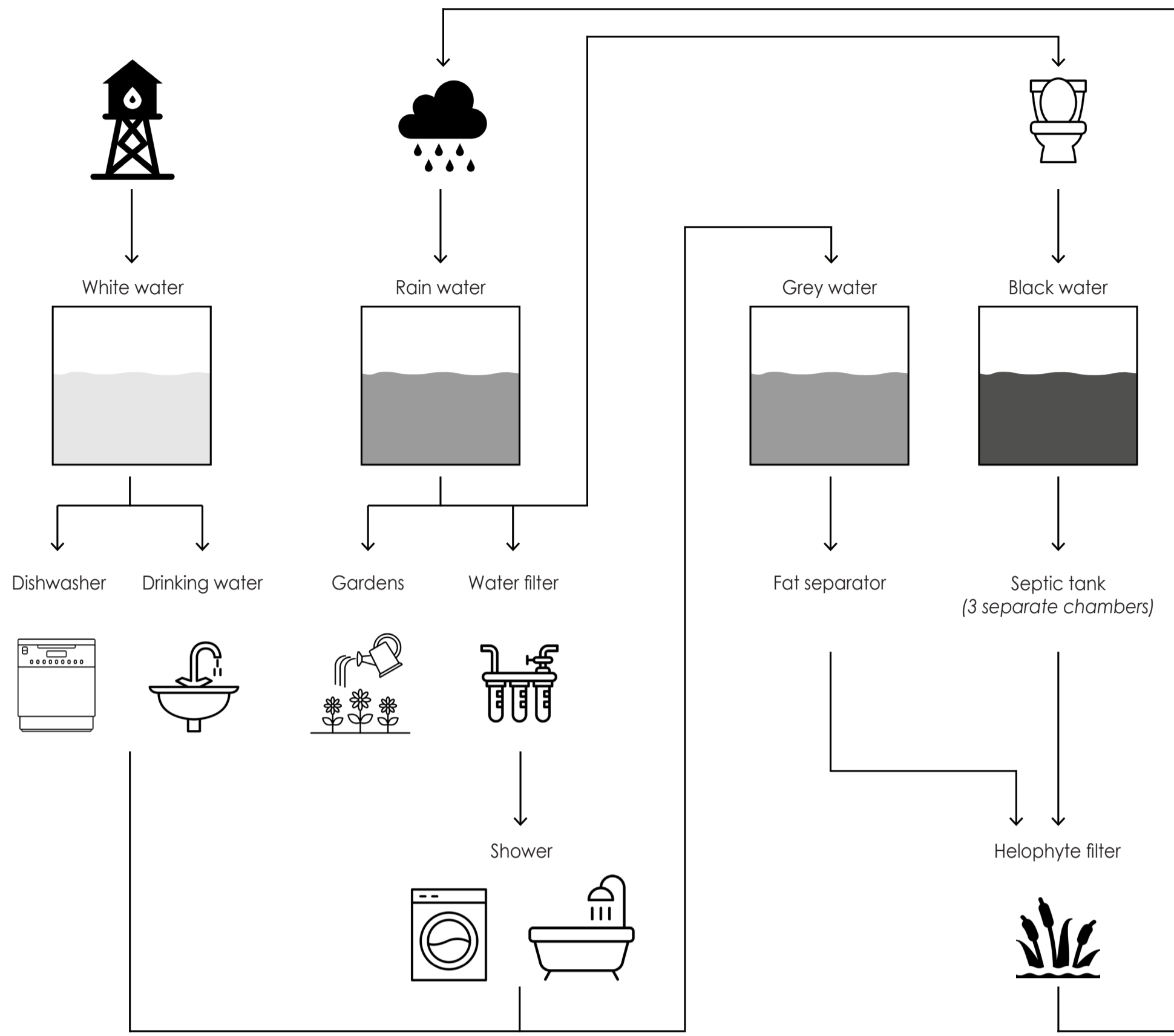




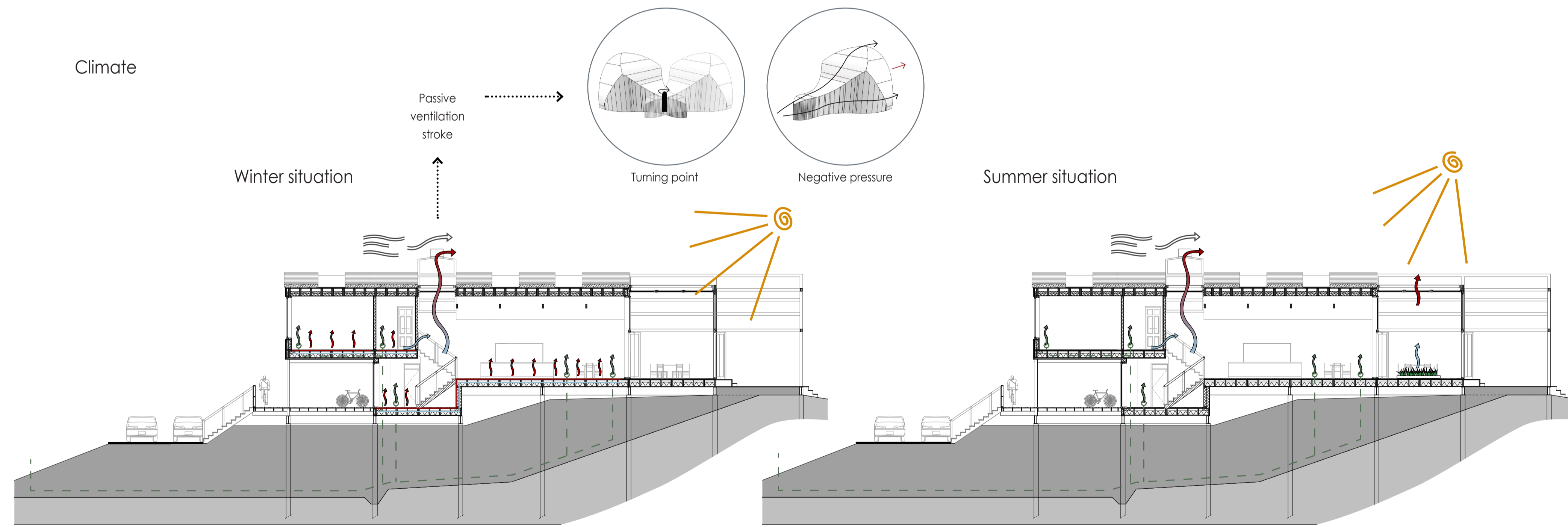
- 1 Scouting
- 2 The Wadden Sea path
- 3 Observation deck
- 4 Restaurant
- 5 Jetty
- 6 The mudflat farm
- 7 Dike benches



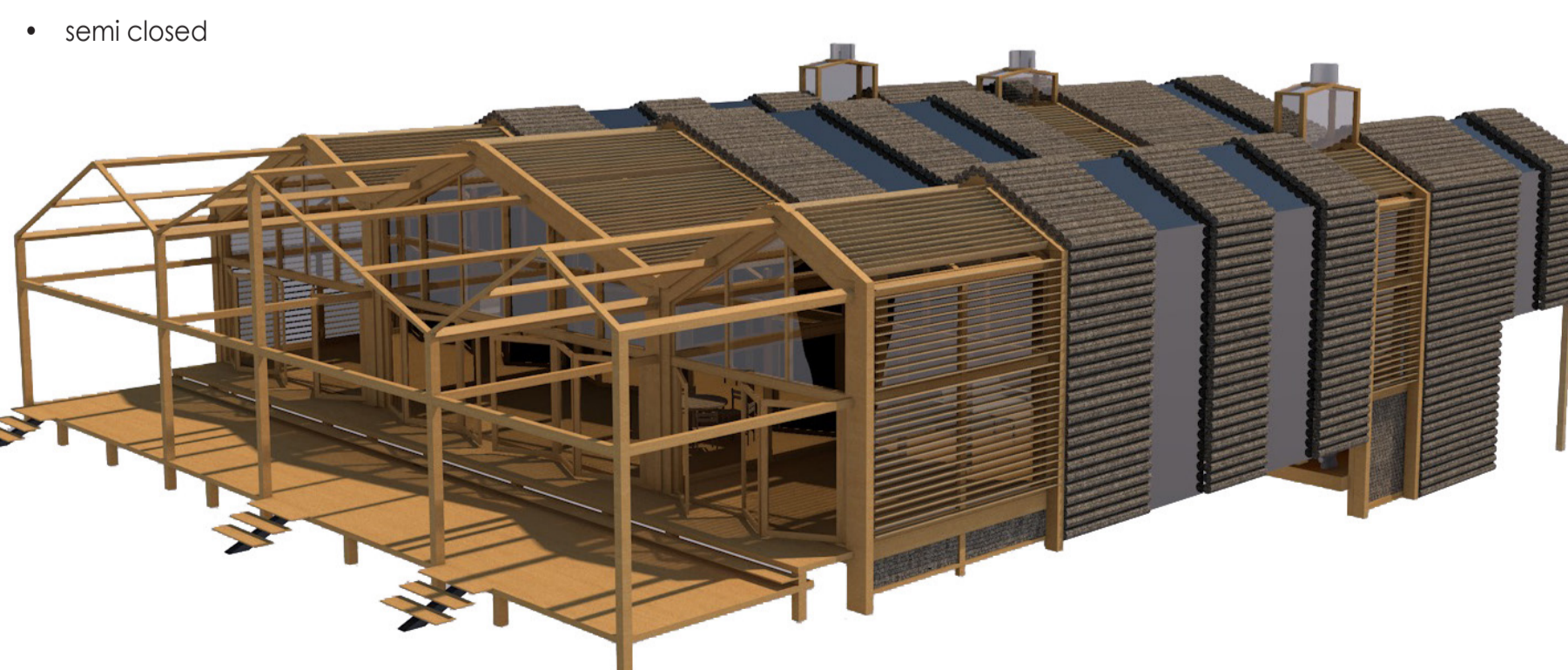
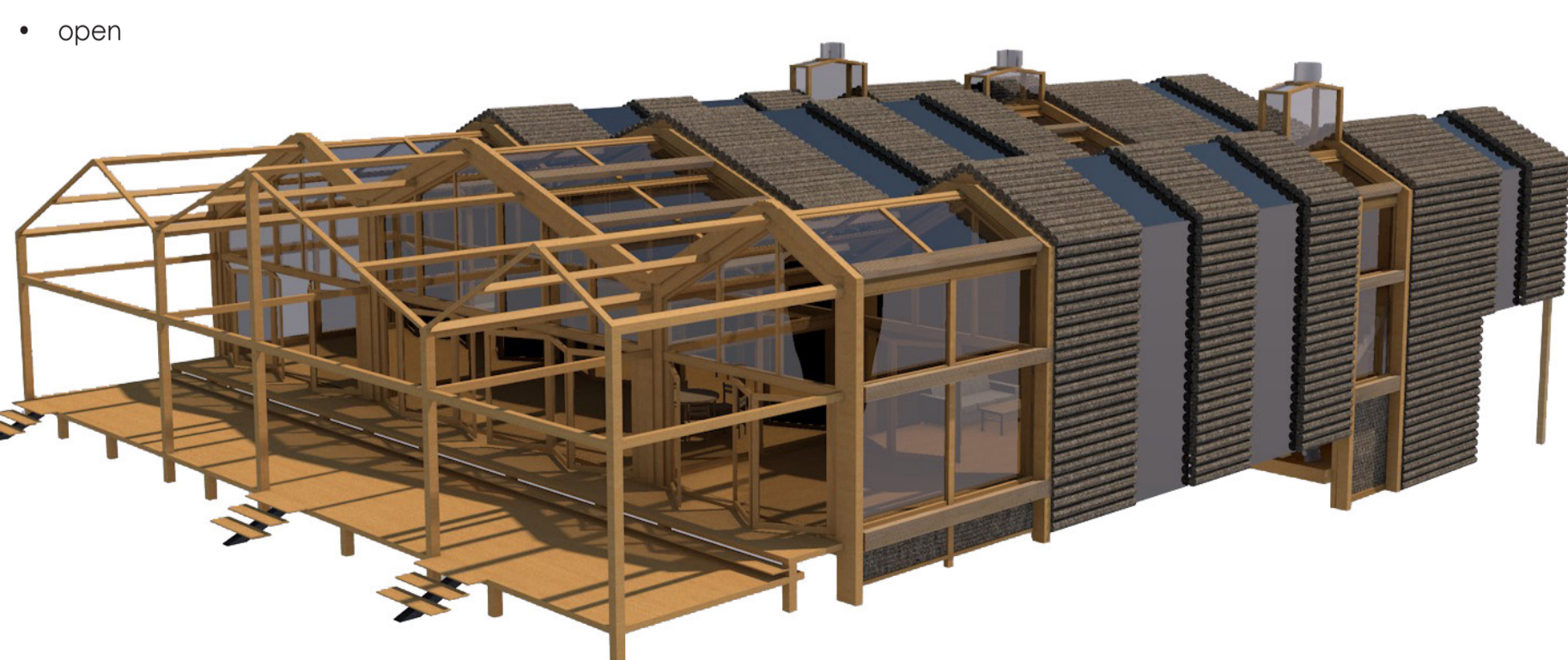
Water cycle

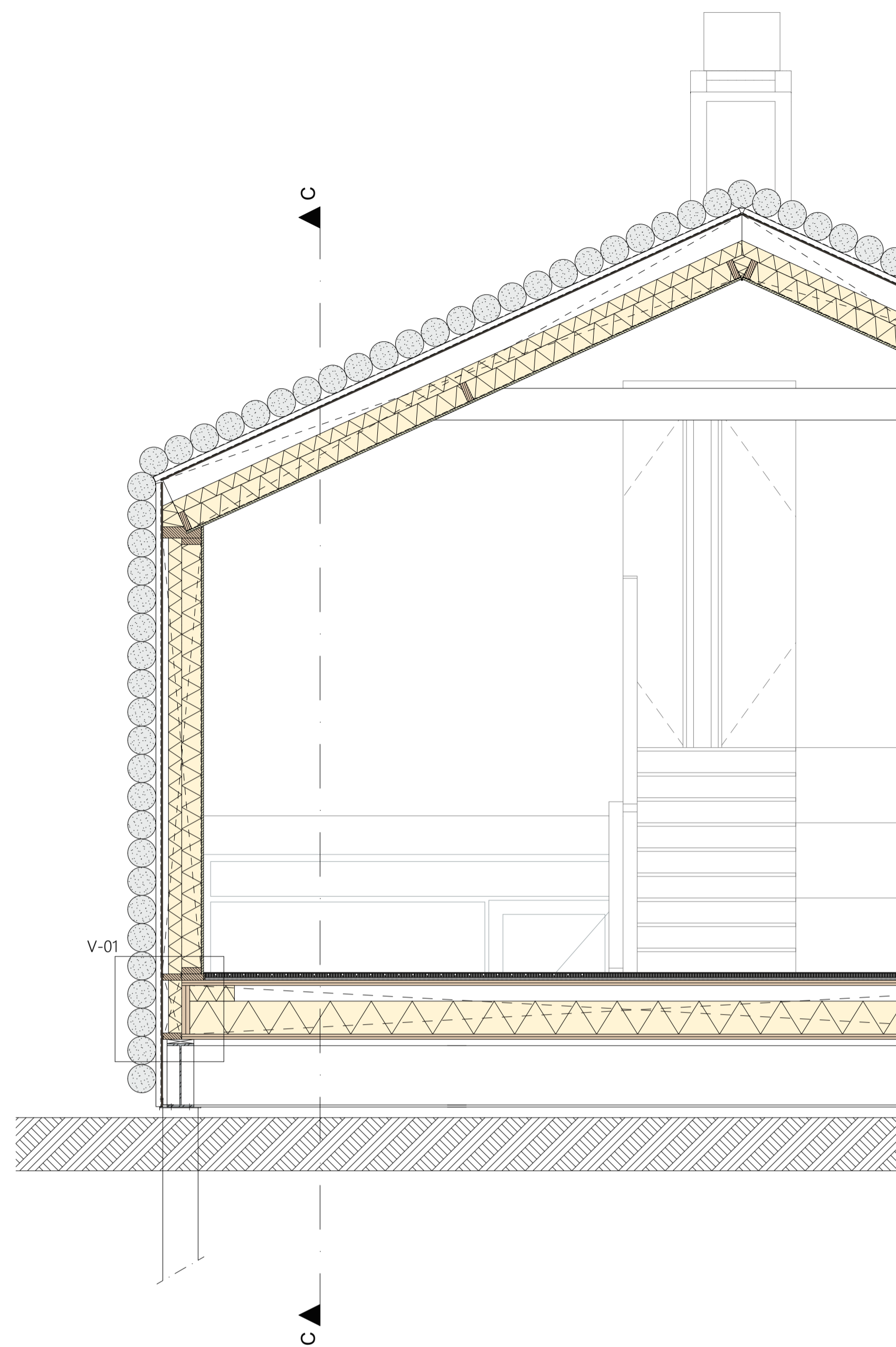
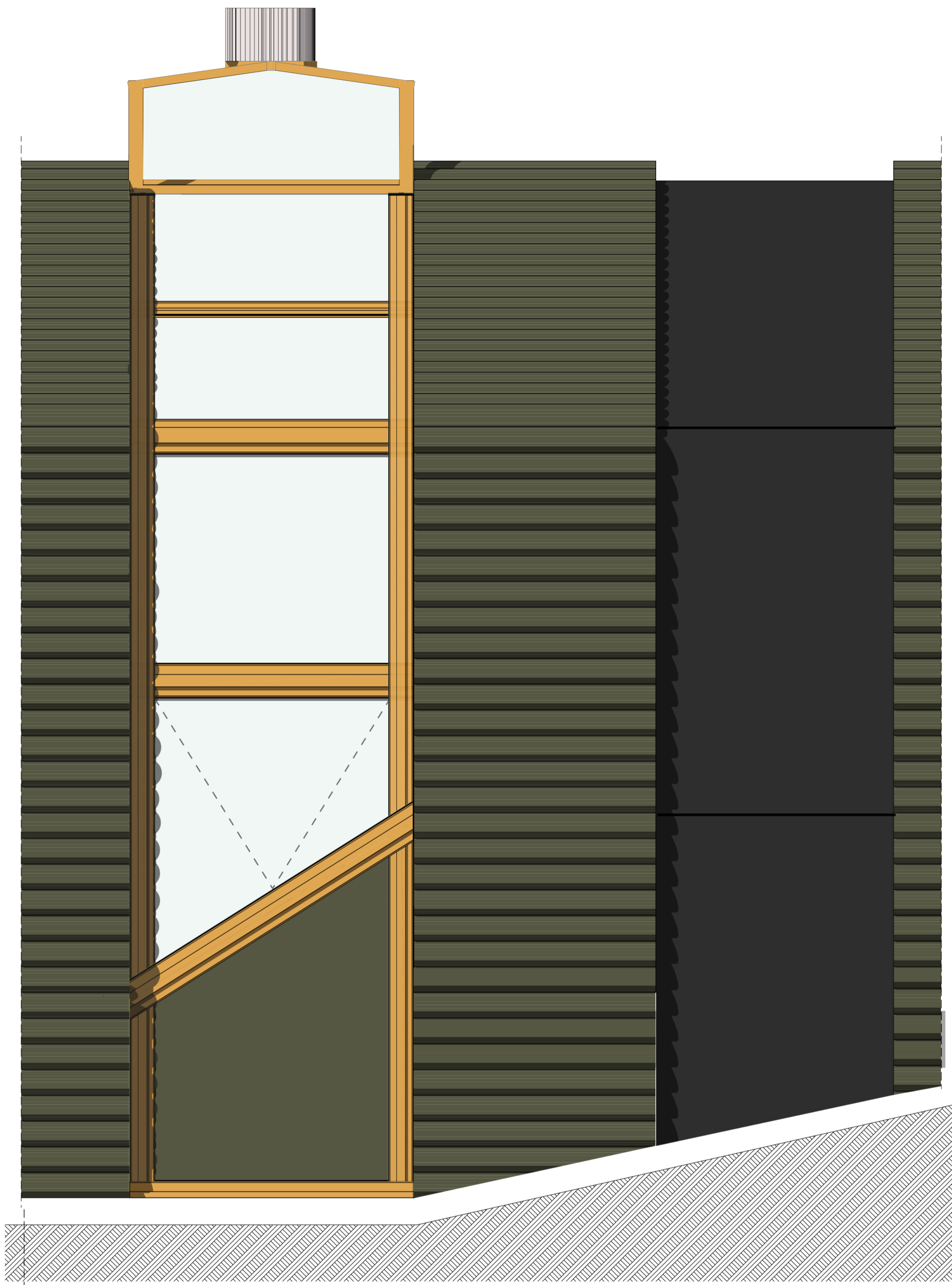


Climate

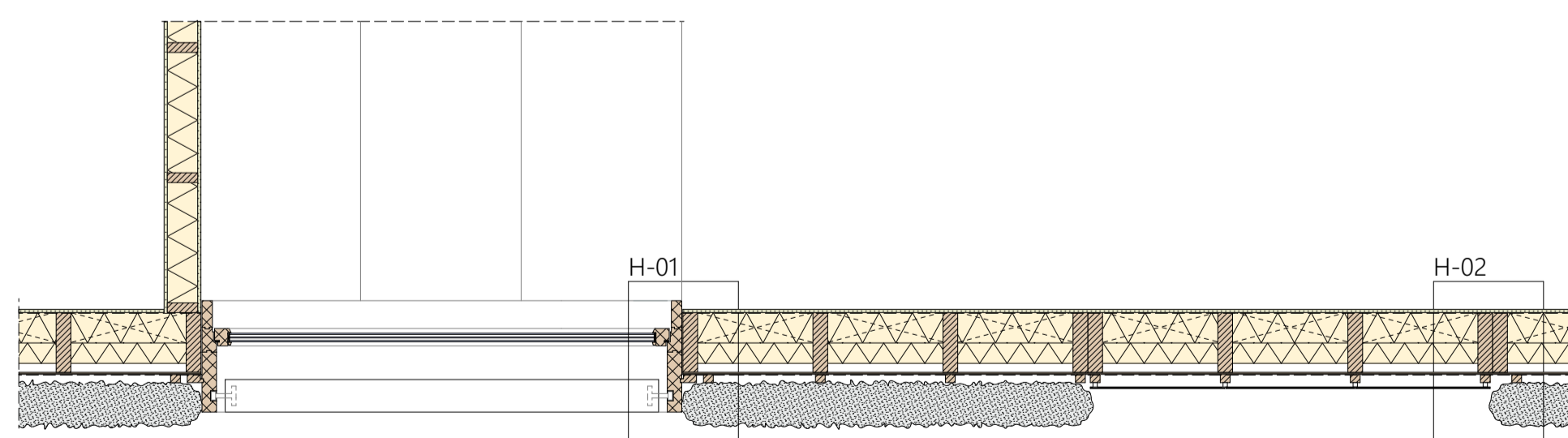
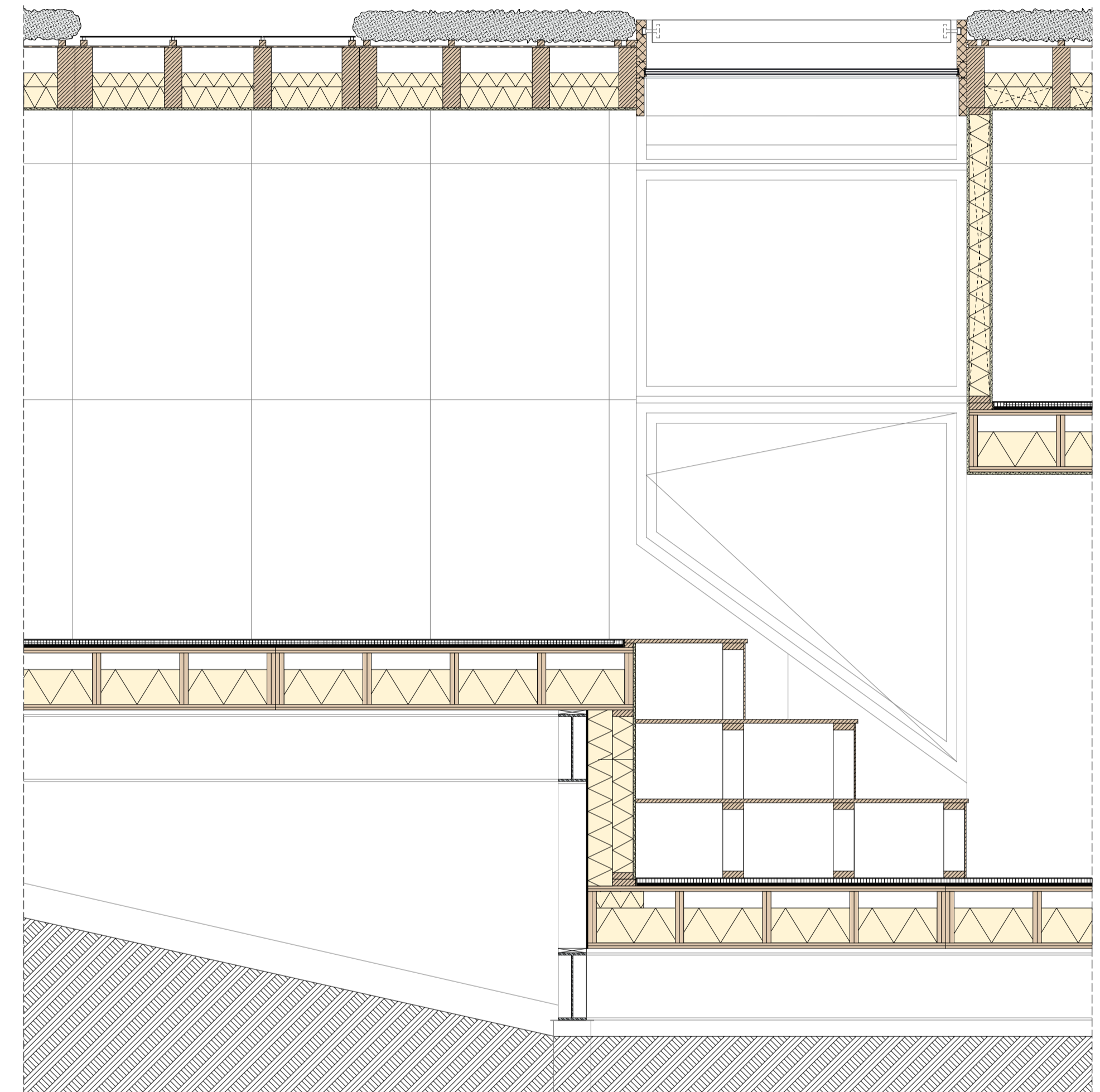


Sun shading

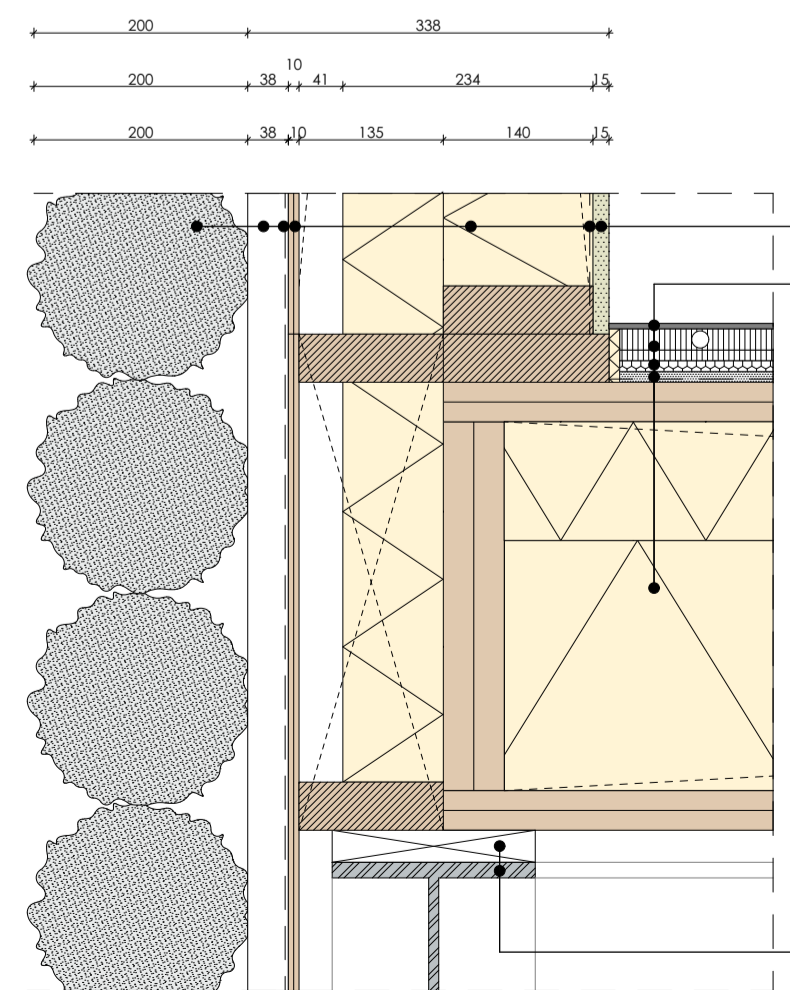




Section C-C

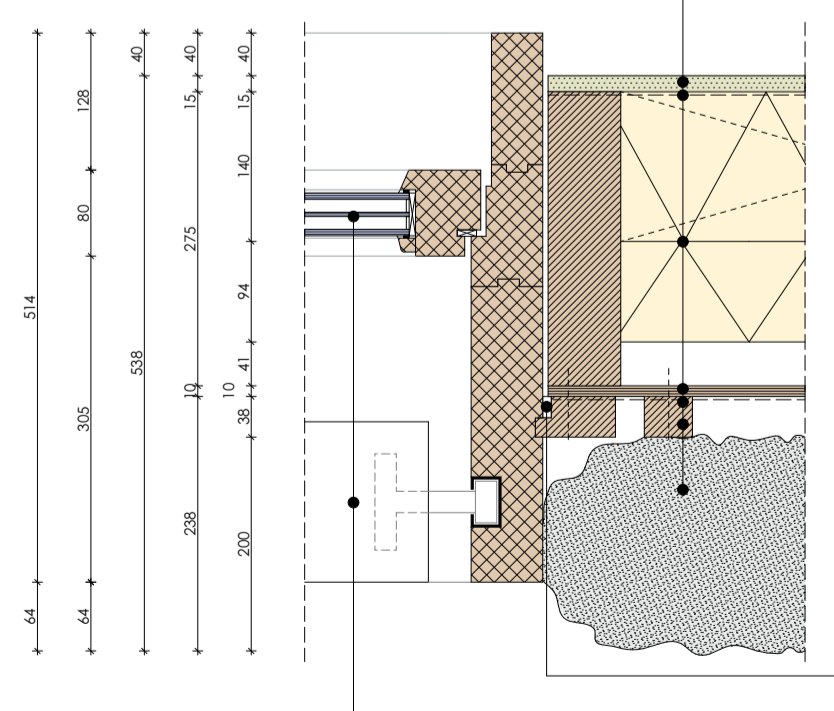


V-01



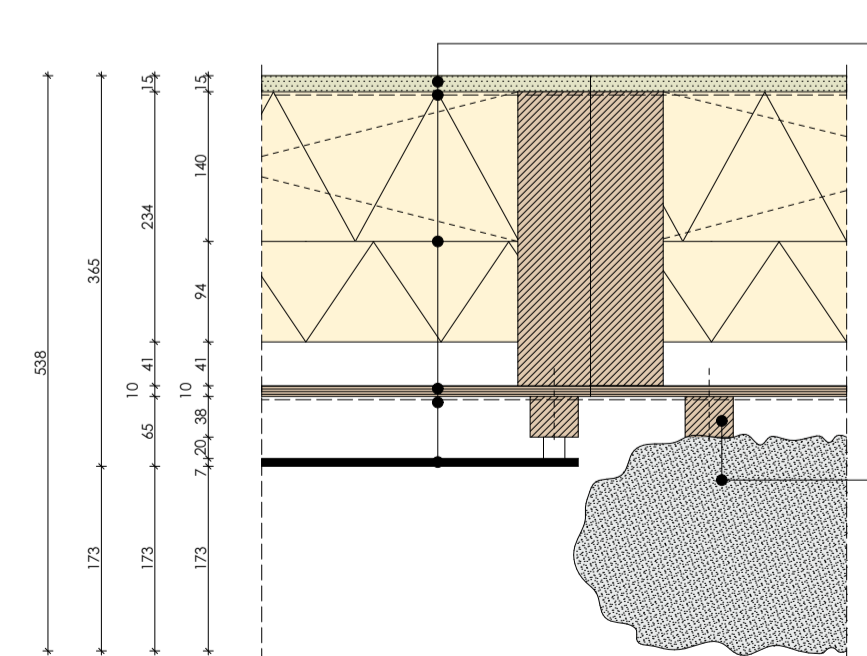
- Seaweed rolls
 - Vertical battens (25x38)
 - Vapor open and water repellent foil
 - Sheet material
 - Seaweed insulating mats
 - Moisture repellent layer
 - Seaweed interior finish
- Filler
 - Double layer gypsum plasterboard (with floor heating)
 - Fel underlay
 - Equalization granules on a protection foil
 - Wooden channel plate floor Kerto-riipa
- Adjusting block
 - IPE 450 foundation beam

H-01



- Seaweed rolls
 - Vertical battens (25x38)
 - Vapor open and water repellent foil
 - Sheet material
 - Seaweed insulating mats
 - Moisture repellent layer
 - Seaweed interior finish
- Seam sealing
 - HR+++ glass
 - Wooden slats system

H-02



- Frameless solar panels (7,3 mm)
 - Solar panel anchor and rail (20 mm)
 - Vapor open and water repellent foil
 - Sheet material
 - Seaweed insulating mats
 - Moisture repellent layer
 - Seaweed interior finish
- Vertical battens (25x38)
 - Seaweed rolls