

Neues Konzerthaus

Complex Projects: Bodies & Buildings Berlin

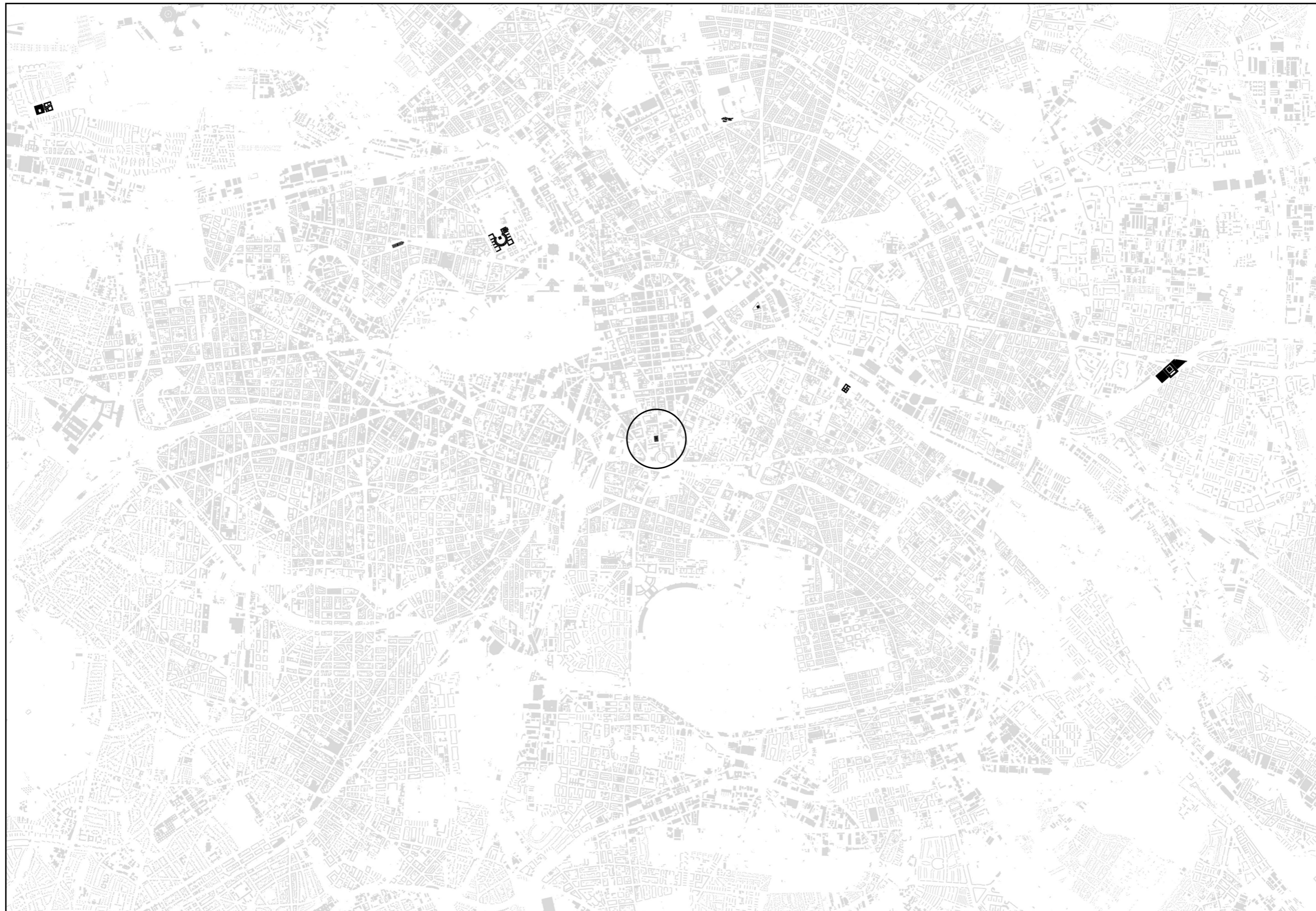
06/12/2023

Drawing Set P4

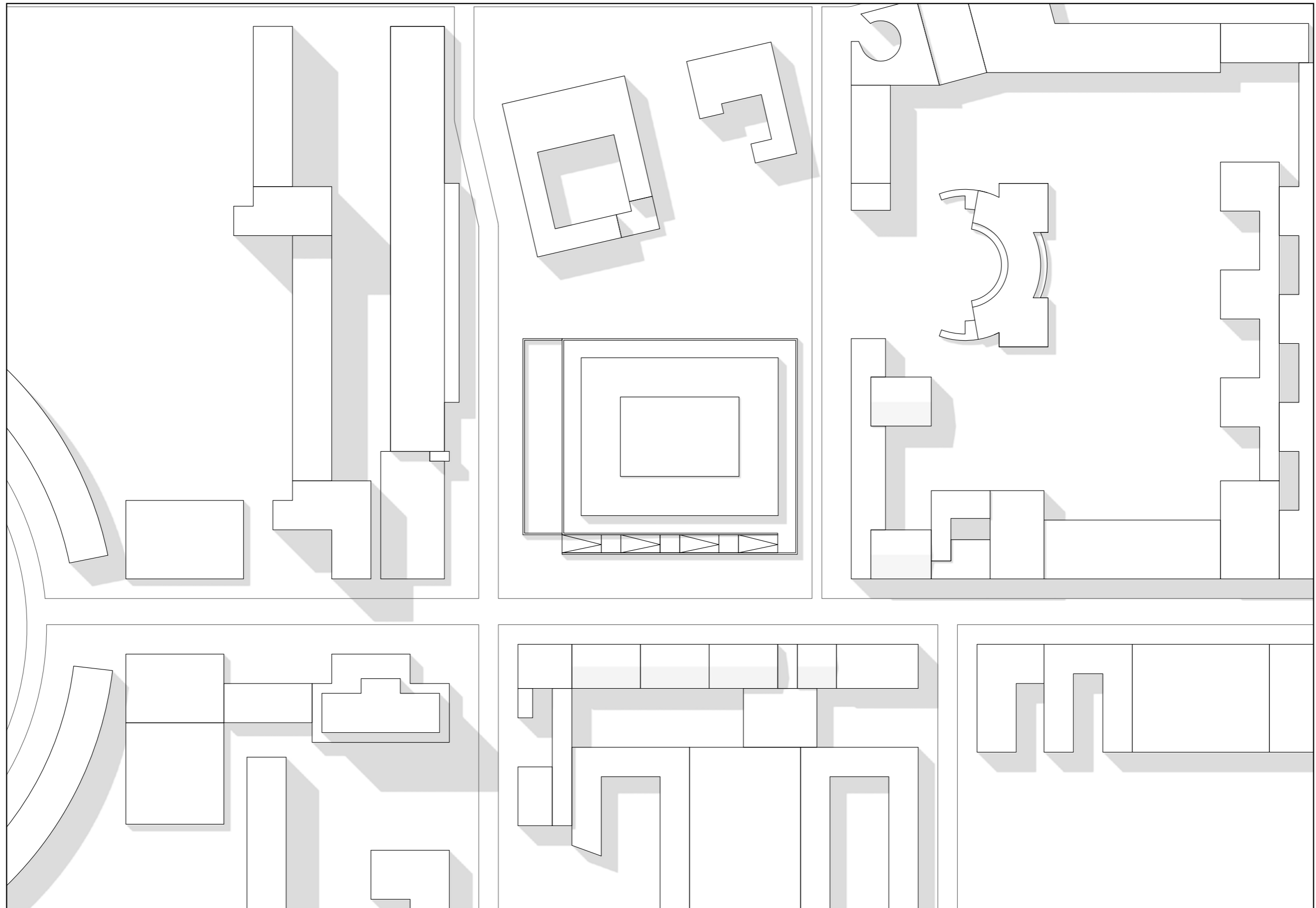
Casper Hijkema

4726650

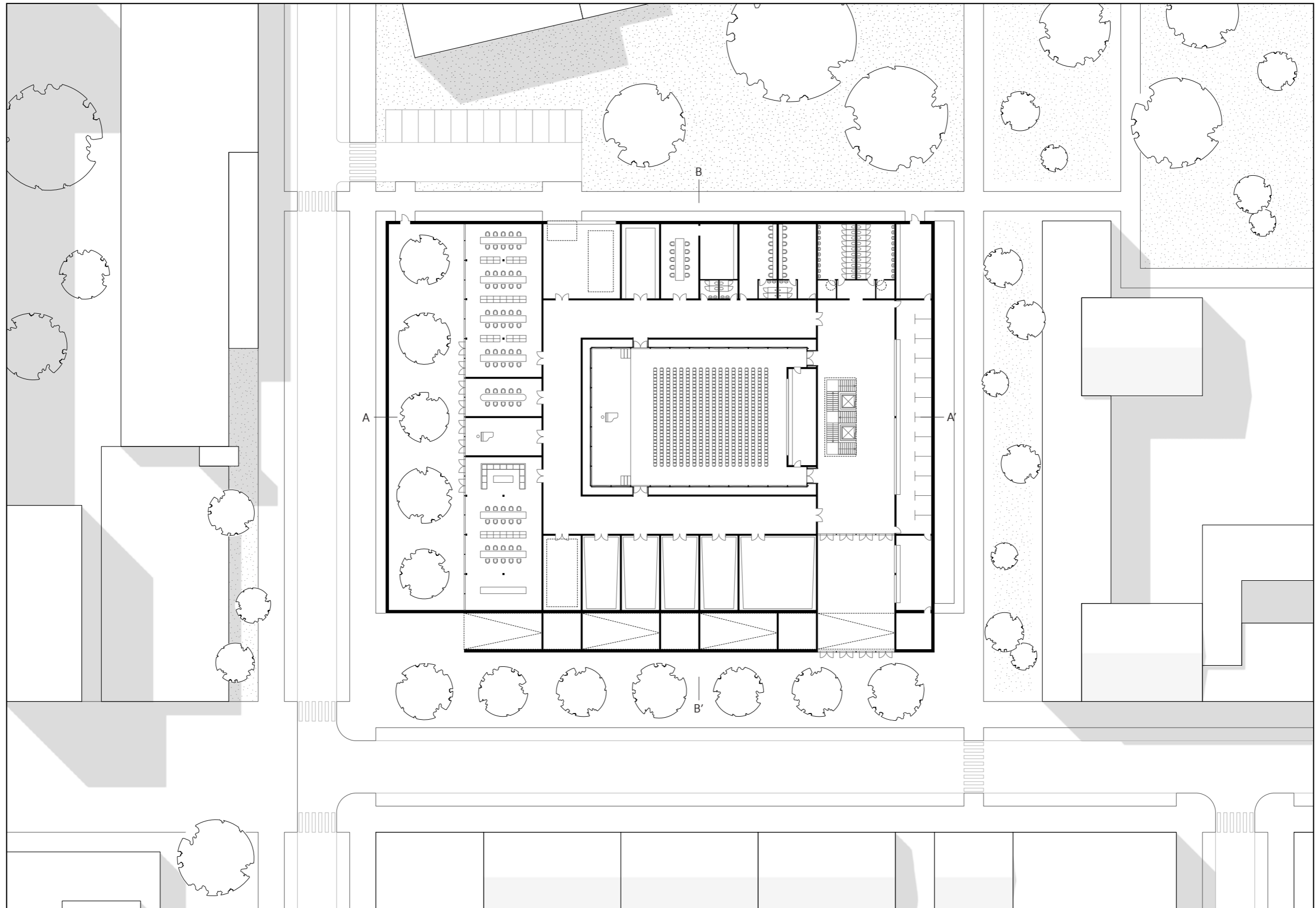
Site, Group (1:75000)



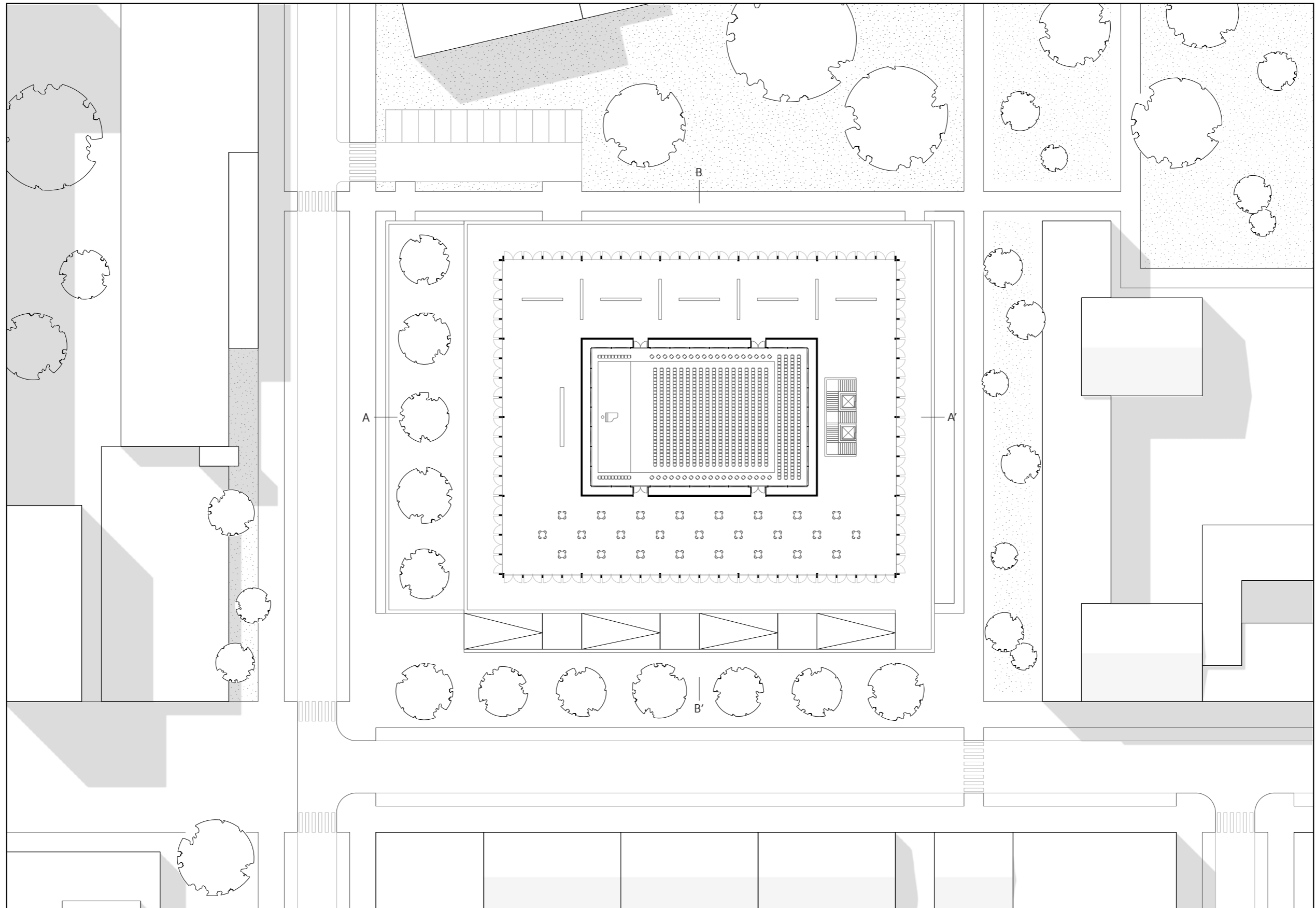
Site, Project (1:1000)



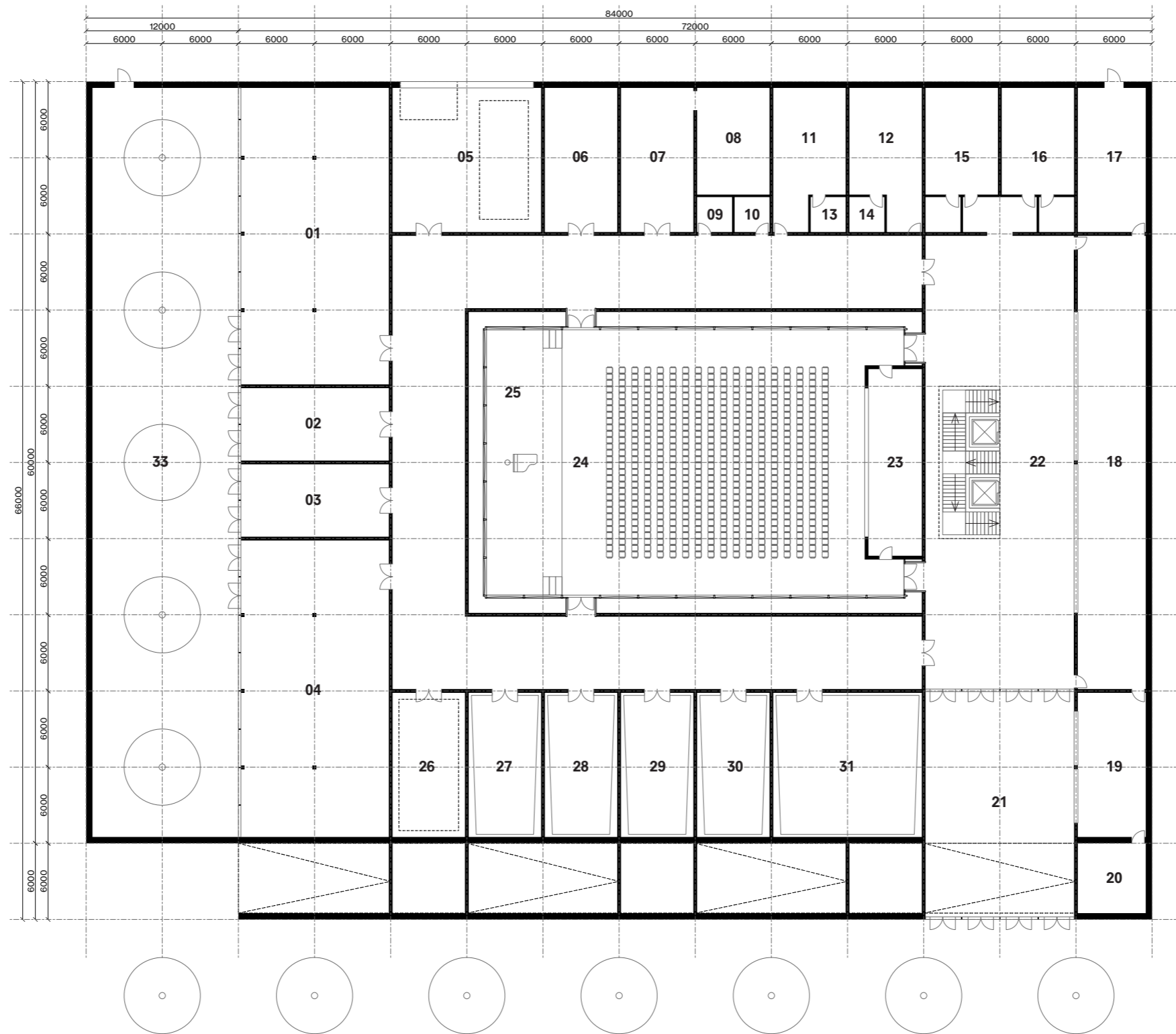
Urban Implementation V0 (1:500)



Urban Implementation V1 (1:500)



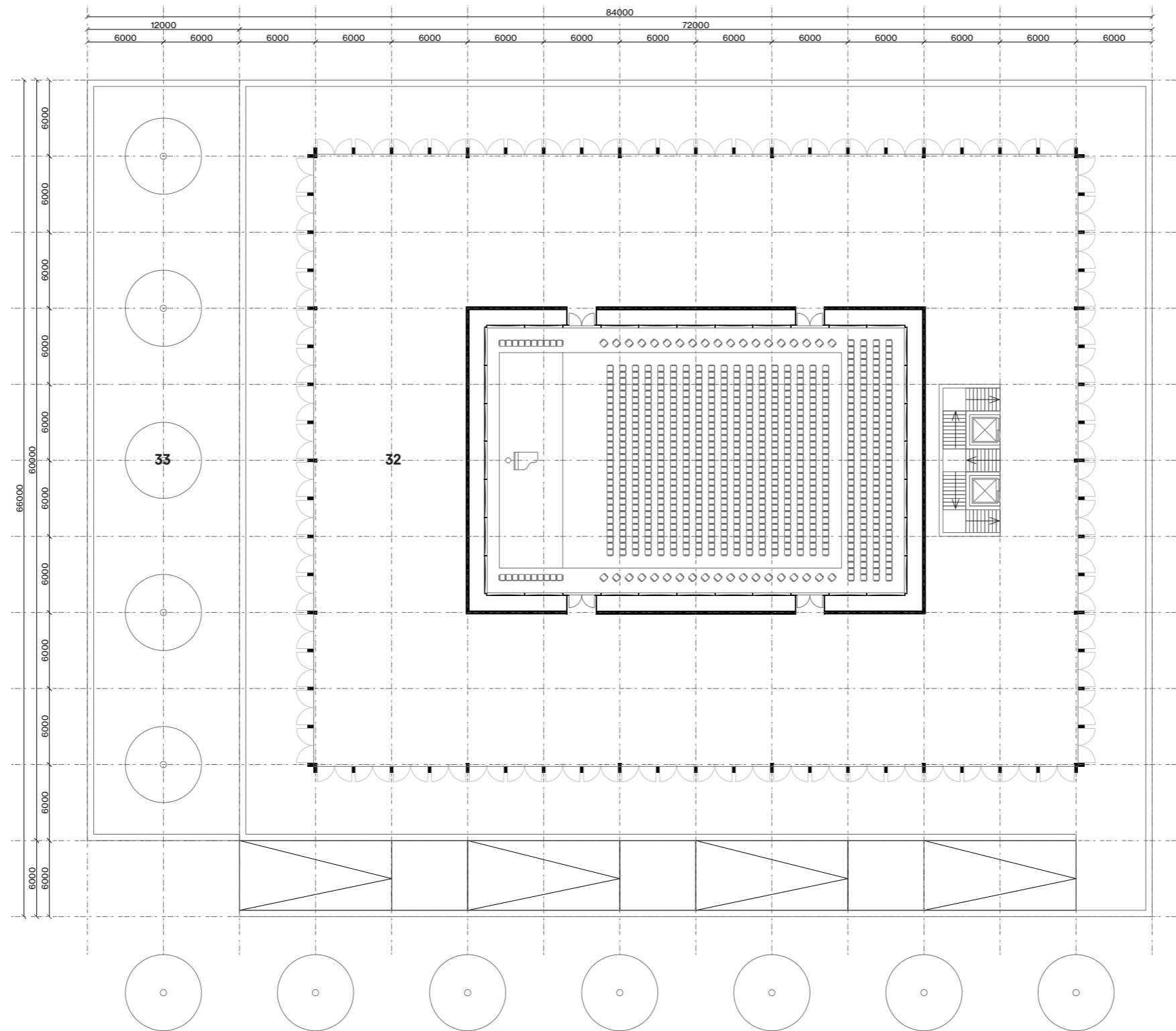
Plan V0 (1:400)



- 01 Office 288 m²
- 02 Boardroom 72 m²
- 03 Antichambre 72 m²
- 04 Artist Foyer 288 m²
- 05 Logistics / Installations 144 m²
- 06 General Storage 72 m²
- 07 Staff Restaurant 72 m²
- 08 Kitchen 54 m²
- 09 Toilets M 9 m²
- 10 Toilets W 9 m²
- 11 Dressing M 63 m²
- 12 Dressing W 63 m²
- 13 Showers M 9 m²
- 14 Showers W 9 m²
- 15 Toilets M 72 m²
- 16 Toilets W 72 m²
- 17 Staff 72 m²
- 18 Wardrobe 216 m²
- 19 Box Office 72 m²
- 20 Storage 36 m²
- 21 Reception Foyer 432 m²
- 22 Lobby 216 m²
- 23 Control Room 67,5 m²
- 24 Auditorium 499,5 m²
- 25 Stage 126 m²
- 26 Large Instruments 72 m²
- 27 Woodwinds 72 m²
- 28 Strings 72 m²
- 29 Brass 72 m²
- 30 Percussion 72 m²
- 31 Choir 144 m²
- 32 Foyer 2016 m²
- 33 Garden 720 m²



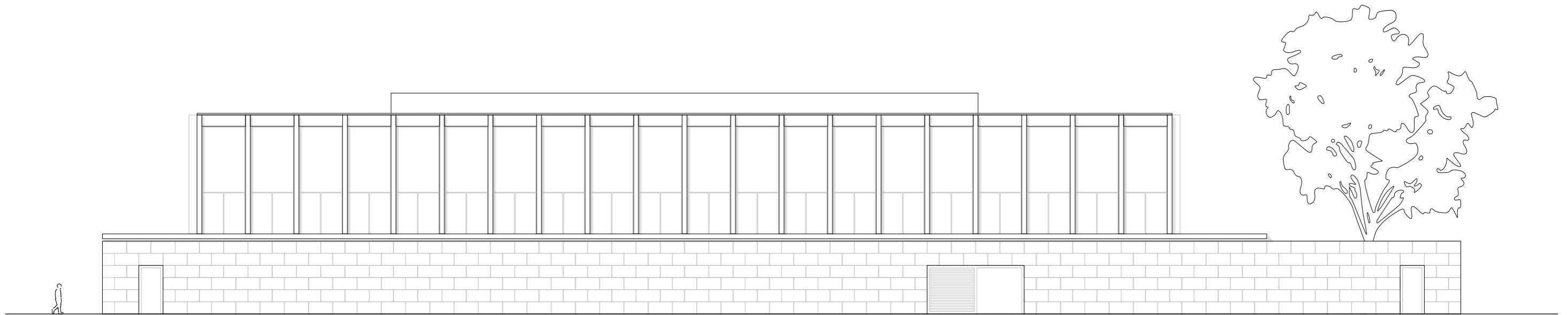
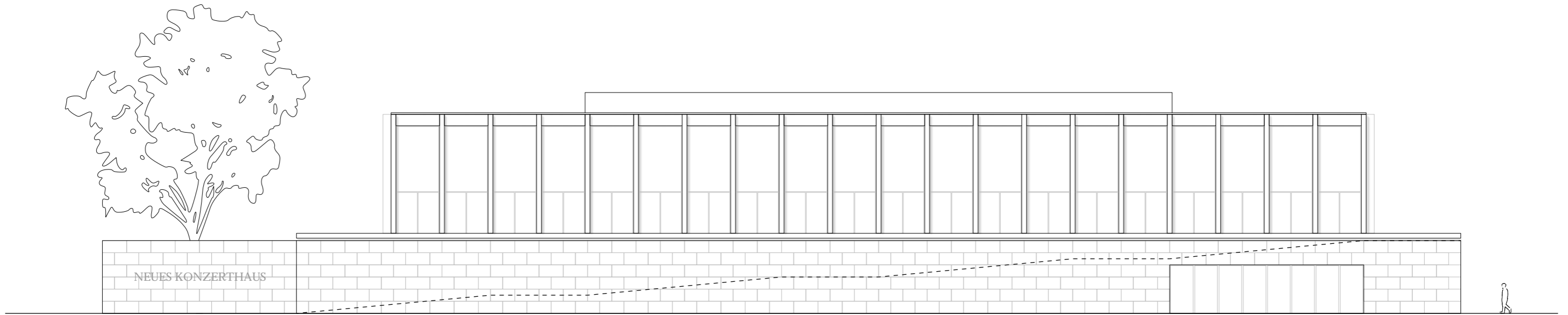
Plan V1 (1:400)



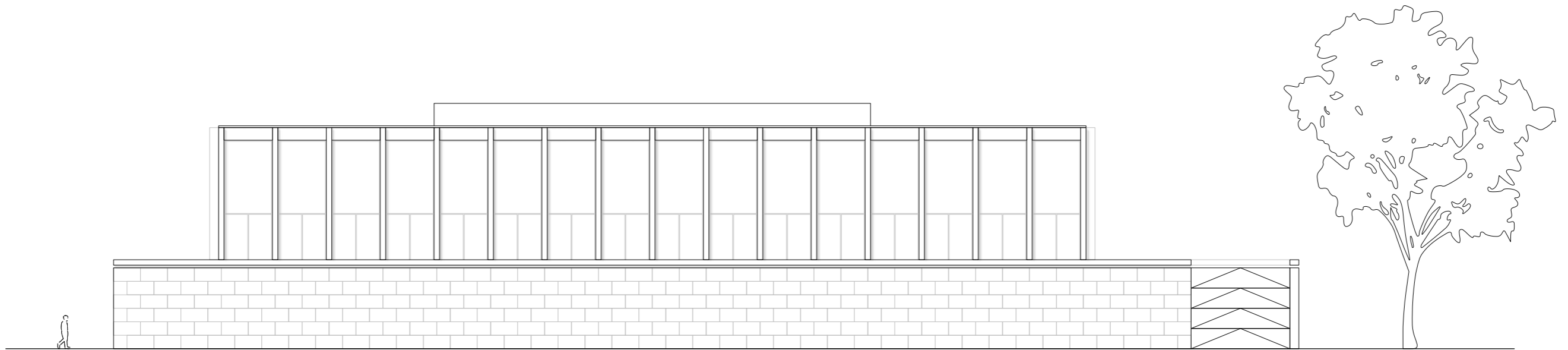
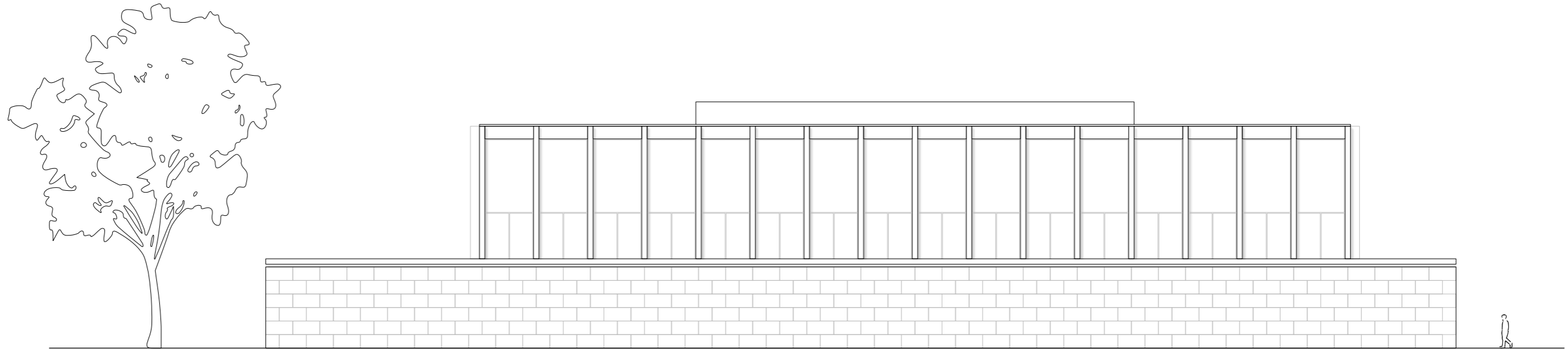
- 01 Office 288 m²
- 02 Boardroom 72 m²
- 03 Antichambre 72 m²
- 04 Artist Foyer 288 m²
- 05 Logistics / Installations 144 m²
- 06 General Storage 72 m²
- 07 Staff Restaurant 72 m²
- 08 Kitchen 54 m²
- 09 Toilets M 9 m²
- 10 Toilets W 9 m²
- 11 Dressing M 63 m²
- 12 Dressing W 63 m²
- 13 Showers M 9 m²
- 14 Showers W 9 m²
- 15 Toilets M 72 m²
- 16 Toilets W 72 m²
- 17 Staff 72 m²
- 18 Wardrobe 216 m²
- 19 Box Office 72 m²
- 20 Storage 36 m²
- 21 Reception Foyer 432 m²
- 22 Lobby 216 m²
- 23 Control Room 67,5 m²
- 24 Auditorium 499,5 m²
- 25 Stage 126 m²
- 26 Large Instruments 72 m²
- 27 Woodwinds 72 m²
- 28 Strings 72 m²
- 29 Brass 72 m²
- 30 Percussion 72 m²
- 31 Choir 144 m²
- 32 Foyer 2016 m²
- 33 Garden 720 m²



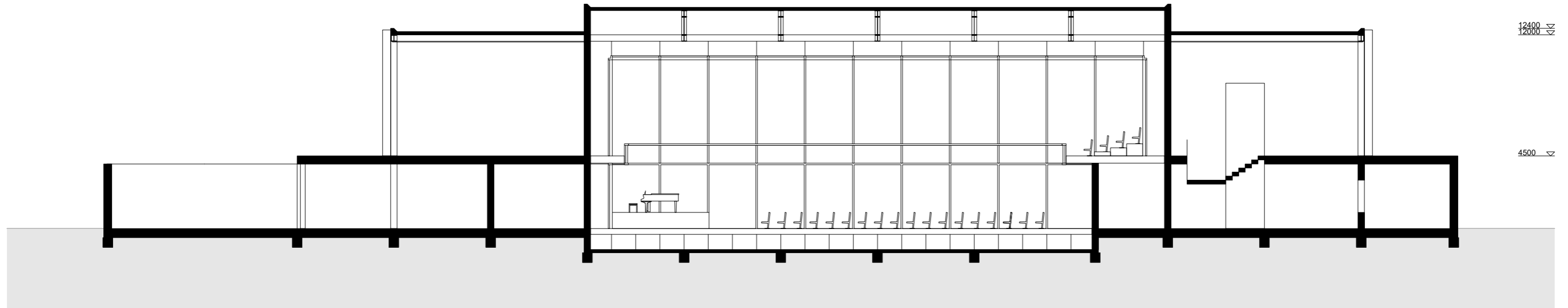
Elevations East/West (1:250)



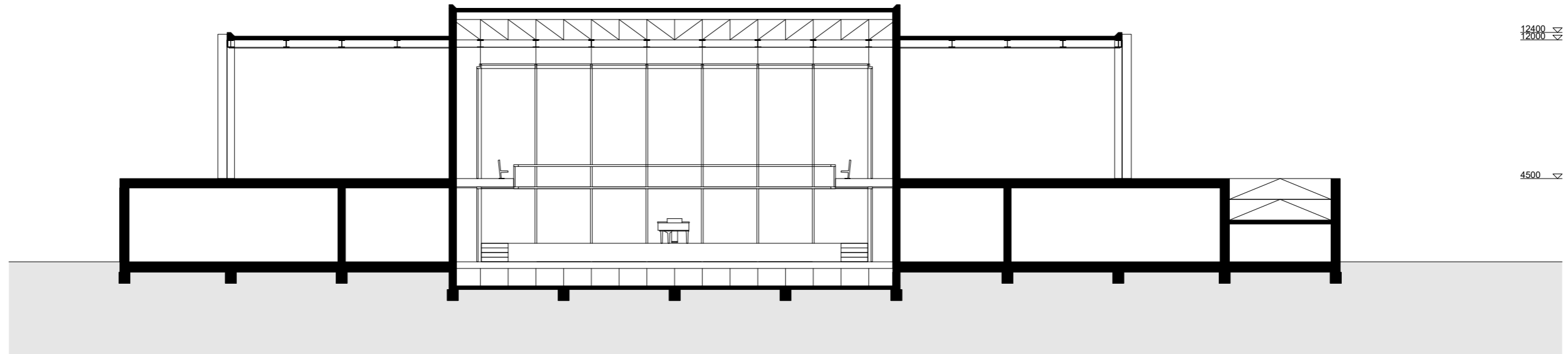
Elevations North/South (1:250)



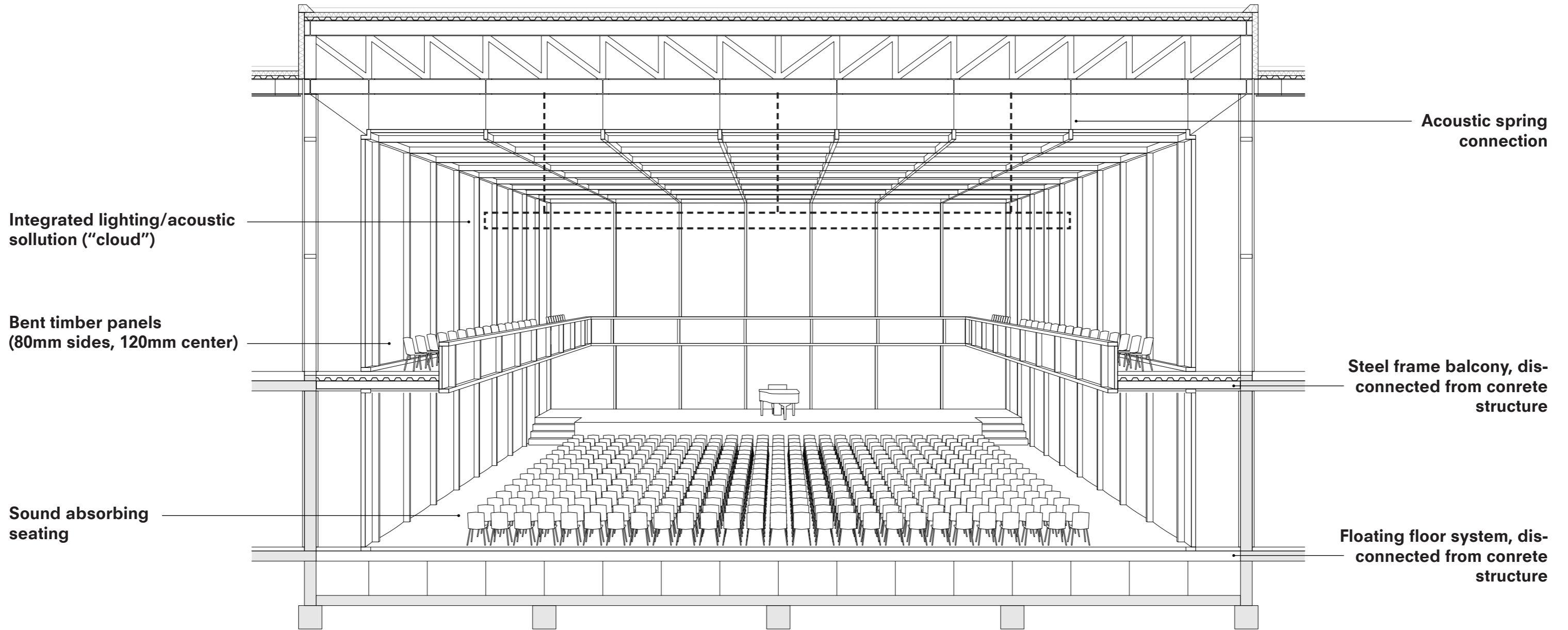
Section AA' (1:250)



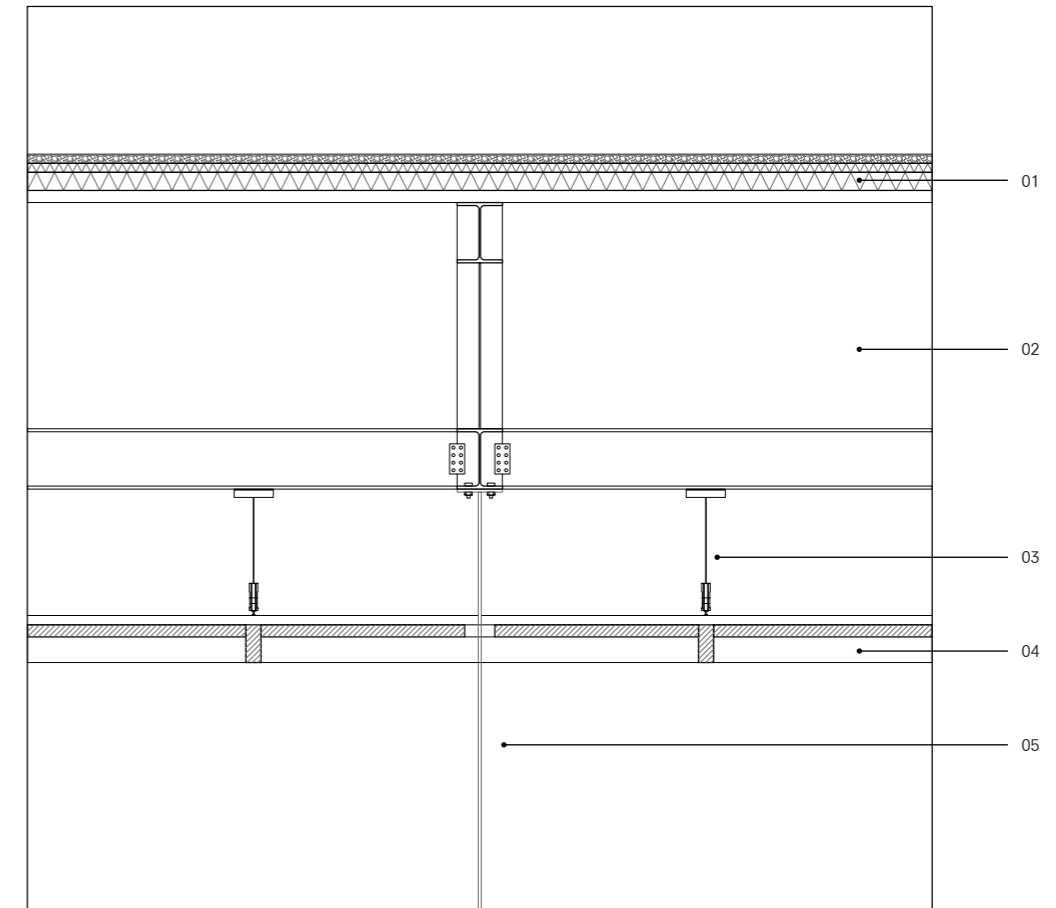
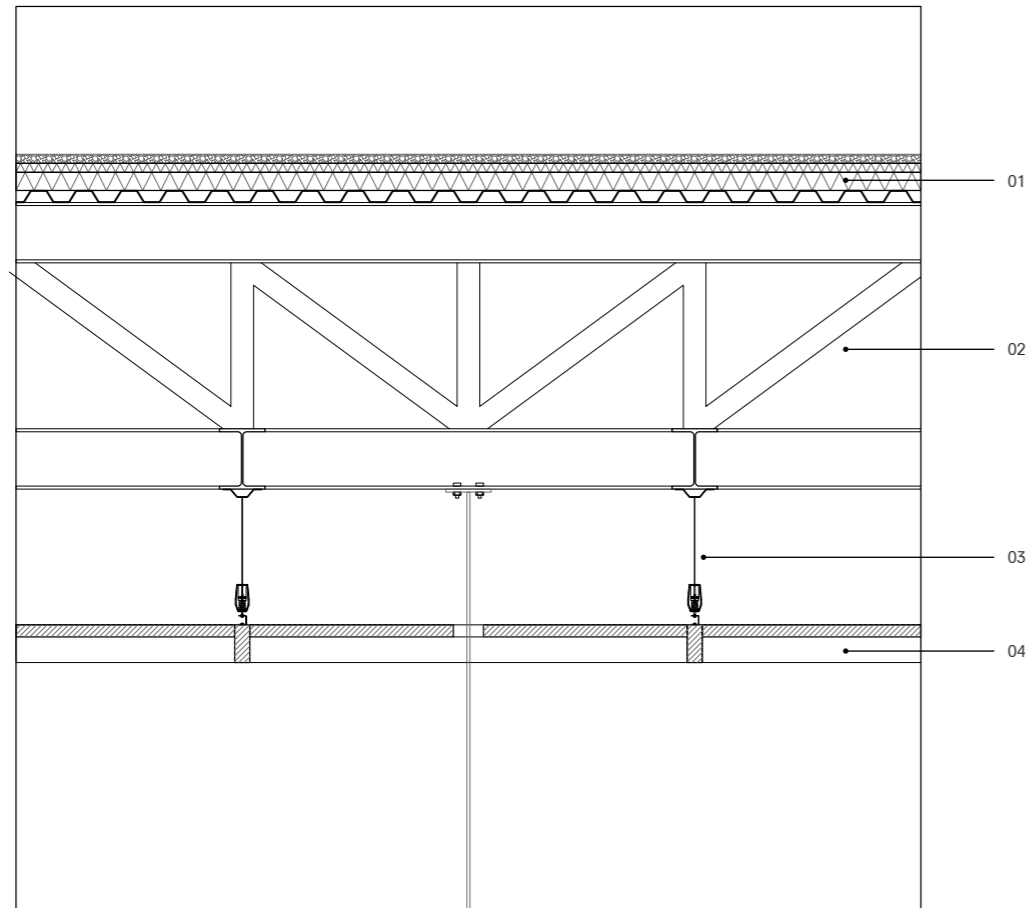
Section BB' (1:250)



Fragment, Auditorium (1:100)



Details, Auditorium (1:50)



01 Roof

- Gravel, 60mm
- Waterproof membrane, 2mm
- Insulation, tapered, $\lambda = 0,020 \text{ W/m}^2\text{K}$
- Insulation, 120mm, $\lambda = 0,020 \text{ W/m}^2\text{K}$
- Vapor barrier, 2mm
- Steel omega sheet, 80mm

02 Truss

- Steel truss, 1500mm
- HEA400

03 Suspension

- Suspension, 900mm
- Acoustic spring connection

04 Shell

- 100x250mm timber slats
- 3000x3000mm timber panels

05 Cloud

- Suspended element with lighting and acoustical solutions

Fragment, Facade (1:100)

01 Roof

- Gravel, 60mm
- Waterproof membrane, 2mm
- Insulation, tapered, $\lambda = 0,020$ W/m²K
- Insulation, 120mm, $\lambda = 0,020$ W/m²K
- Vapor barrier, 2mm
- Steel omega sheet, 80mm
- HEA400
- Suspended ceiling, 25mm

02 Floor, interior

- Natural stone tiles, 1200x1200mm, 40mm
- Screed inc. floor heating- and cooling system, 80mm
- Insulation, 60mm
- Leveling screed, 60mm
- Hollow core slab + compression layer, 200mm + 60mm
- Suspended ceiling

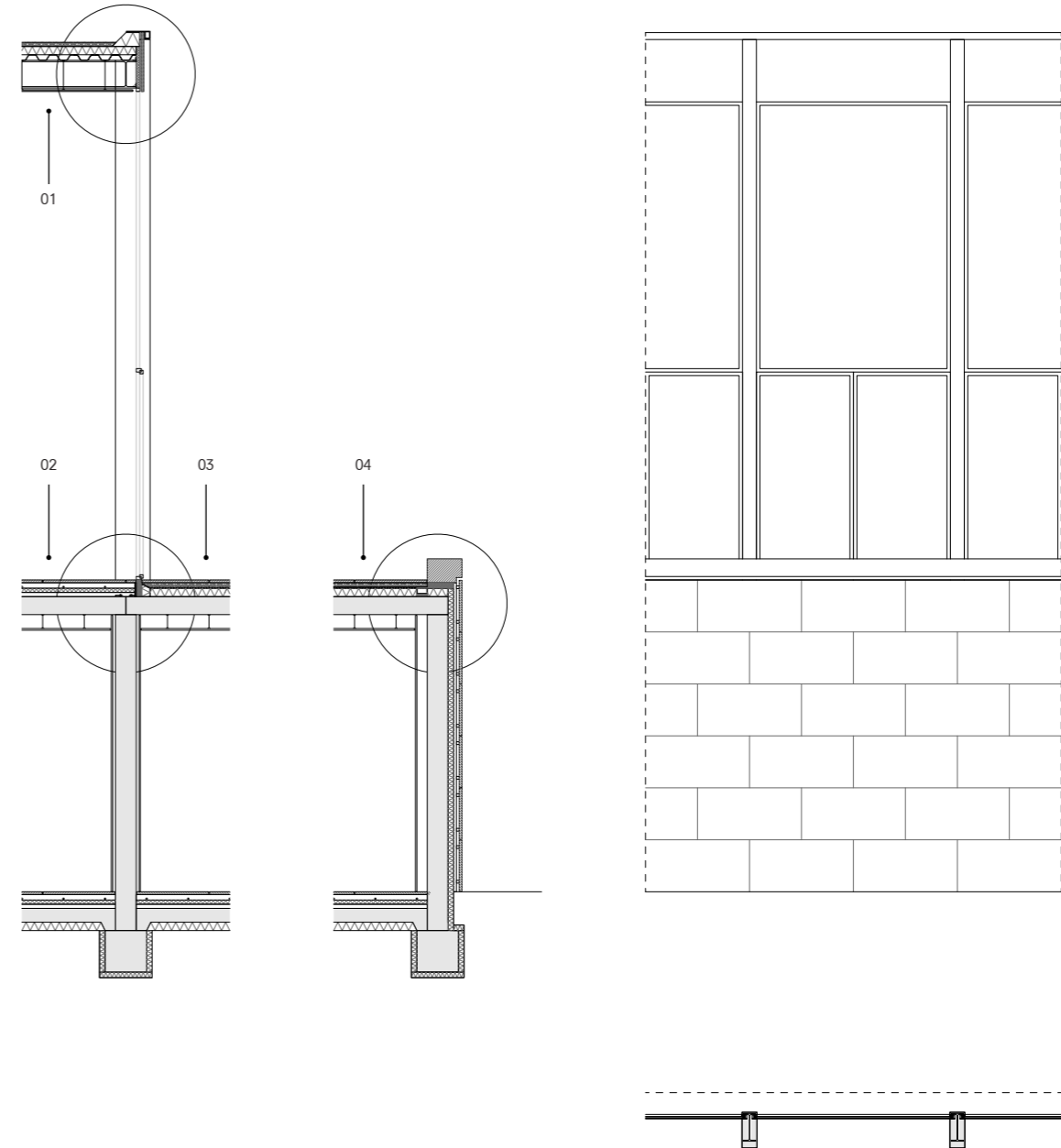
03 Floor, exterior

- Natural stone tiles, 1200x1200mm, 40mm
- Gravel, 60mm

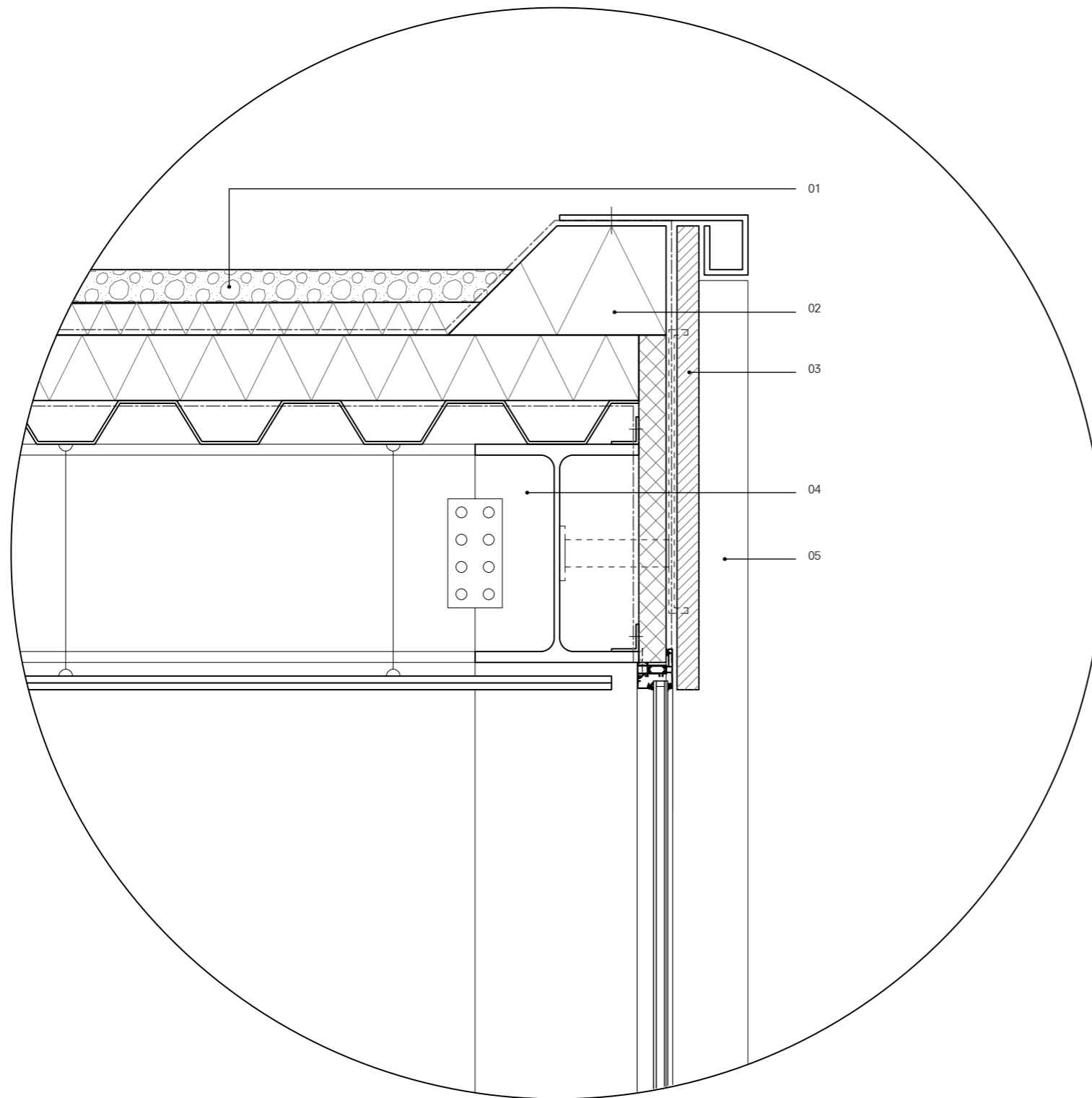
- Drainage, 20mm
- Waterproof membrane, 2mm
- Insulation, 120mm, $\lambda = 0,020$ W/m²K
- Vapor barrier, 2mm
- Hollow core slab + compression layer, 200mm + 60mm
- Suspended ceiling

04 Exterior wall

- Natural stone tiles, 750x1500mm, 40mm
- Mounting system, horizontal, 40mm
- Mounting system, vertical, 40mm, mounted to concrete structure
- Waterproof membrane, 2mm
- Insulation, 80mm, $\lambda = 0,020$ W/m²K
- Vapor barrier, 2mm
- Concrete loadbearing wall, 300mm
- Drainpipe integrated in false wall



Detail 1 (1:10)



01 Roof

- Gravel, 60mm
- Waterproof membrane
- Insulation, tapered, $\lambda = 0,020$ W/m²K
- Insulation, 120mm, $\lambda = 0,020$ W/m²K
- Vapor barrier
- Steel omega sheet, 80mm
- HEA400
- Suspended ceiling, 25mm

02 Eaves

- Tapered insulation, $\lambda = 0,020$ W/m²K
- Copper profile

03 Facade

- Natural stone panel, 40mm, mounted to steel structure
- Insulated console, 50mm, mounted to steel structure

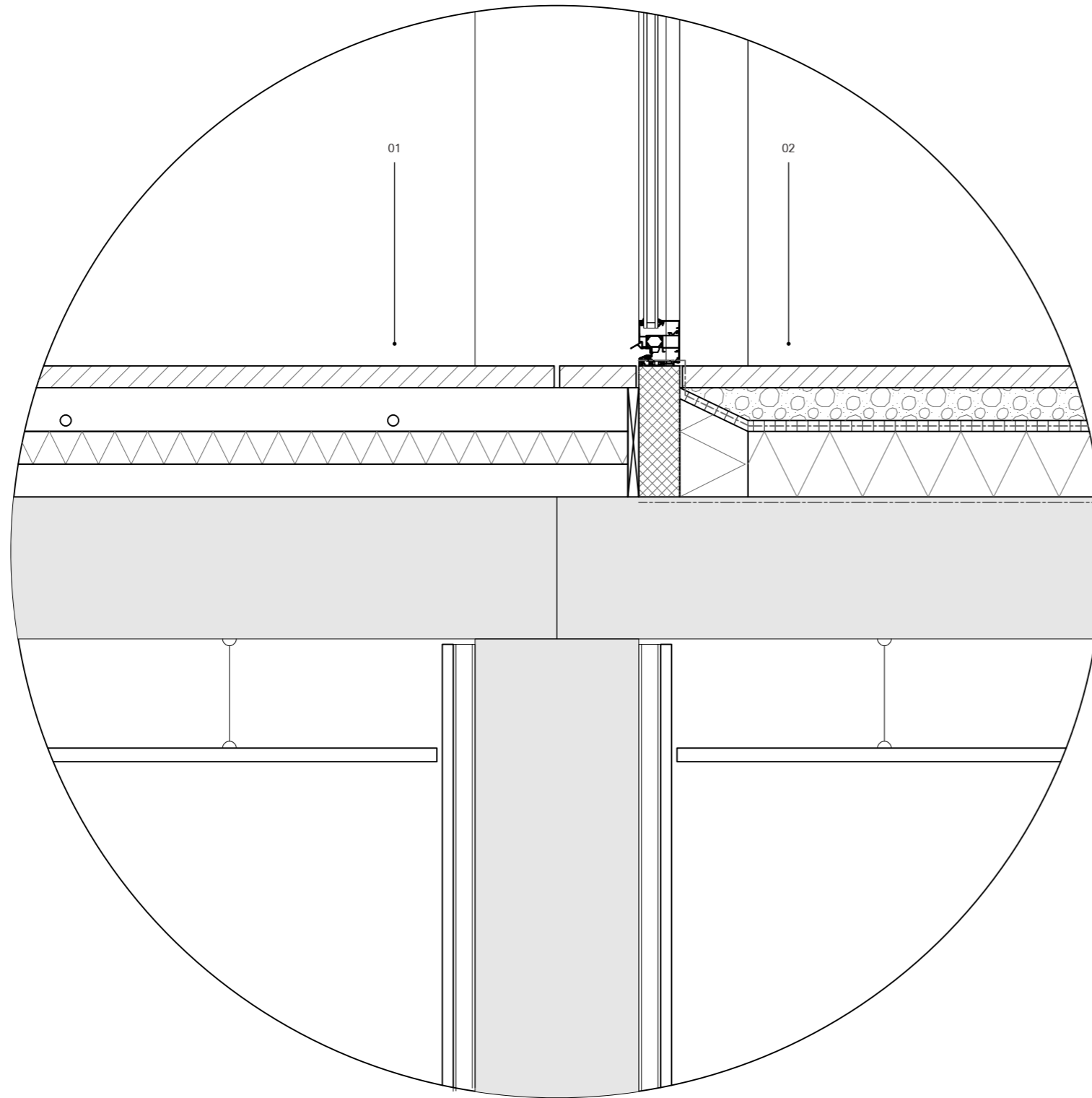
04 Structure

- HEA400

05 Mullion

- Natural stone panels, 40mm
- IPE-profile, insulated
- Window frame, 65mm, mounted to IPE-profile

Detail 2 (1:10)



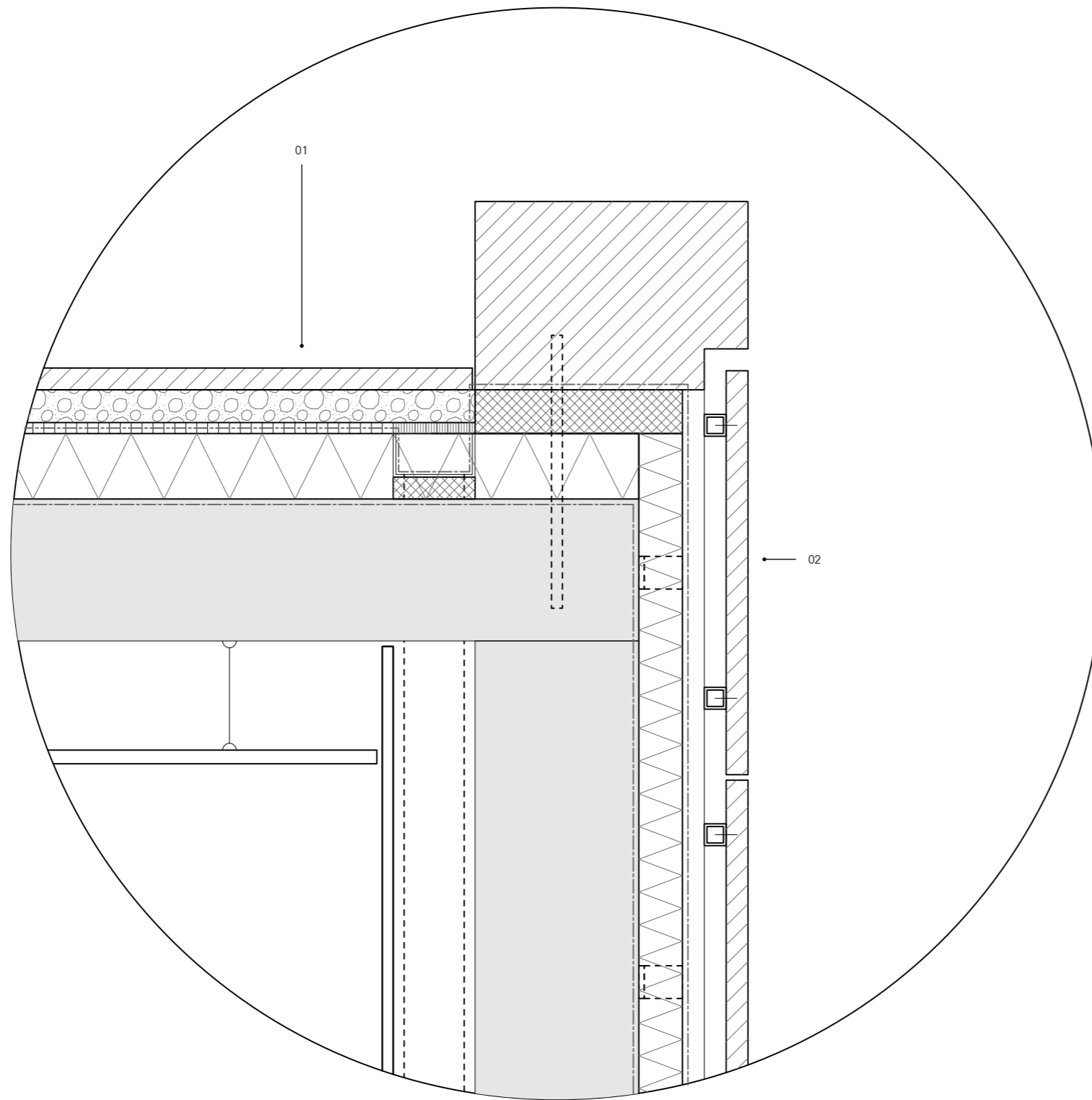
01 Floor, interior

- Natural stone tiles, 1200x1200mm, 40mm
- Screed inc. floor heating- and cooling-system, 80mm
- Insulation, 60mm
- Leveling screed, 60mm
- Hollow core slab + compression layer, 200mm + 60mm
- Suspended ceiling

02 Floor, exterior

- Natural stone tiles, 1200x1200mm, 40mm
- Gravel, 60mm
- Drainage, 20mm
- Waterproof membrane, 2mm
- Insulation, 120mm, $\lambda = 0,020$ W/m²K
- Hollow core slab + compression layer, 200mm + 60mm
- Vapor barrier, 2mm
- Suspended ceiling

Detail 3 (1:10)



01 Floor, exterior

- Natural stone tiles, 1200x1200mm, 40mm
- Gravel, 60mm
- Drainage, 20mm
- Waterproof membrane, 2mm
- Insulation, 120mm, $\lambda = 0,020$ W/m²K
- Vapor barrier, 2mm
- Hollow core slab + compression layer, 200mm + 60mm

02 Exterior wall

- Natural stone tiles, 750x1500mm, 40mm
- Mounting system, horizontal, 40mm
- Mounting system, vertical, 40mm, mounted to concrete structure
- Waterproof membrane, 2mm
- Insulation, 80mm, $\lambda = 0,020$ W/m²K
- Vapor barrier, 2mm
- Concrete loadbearing wall, 300mm
- Drainpipe integrated in false wall