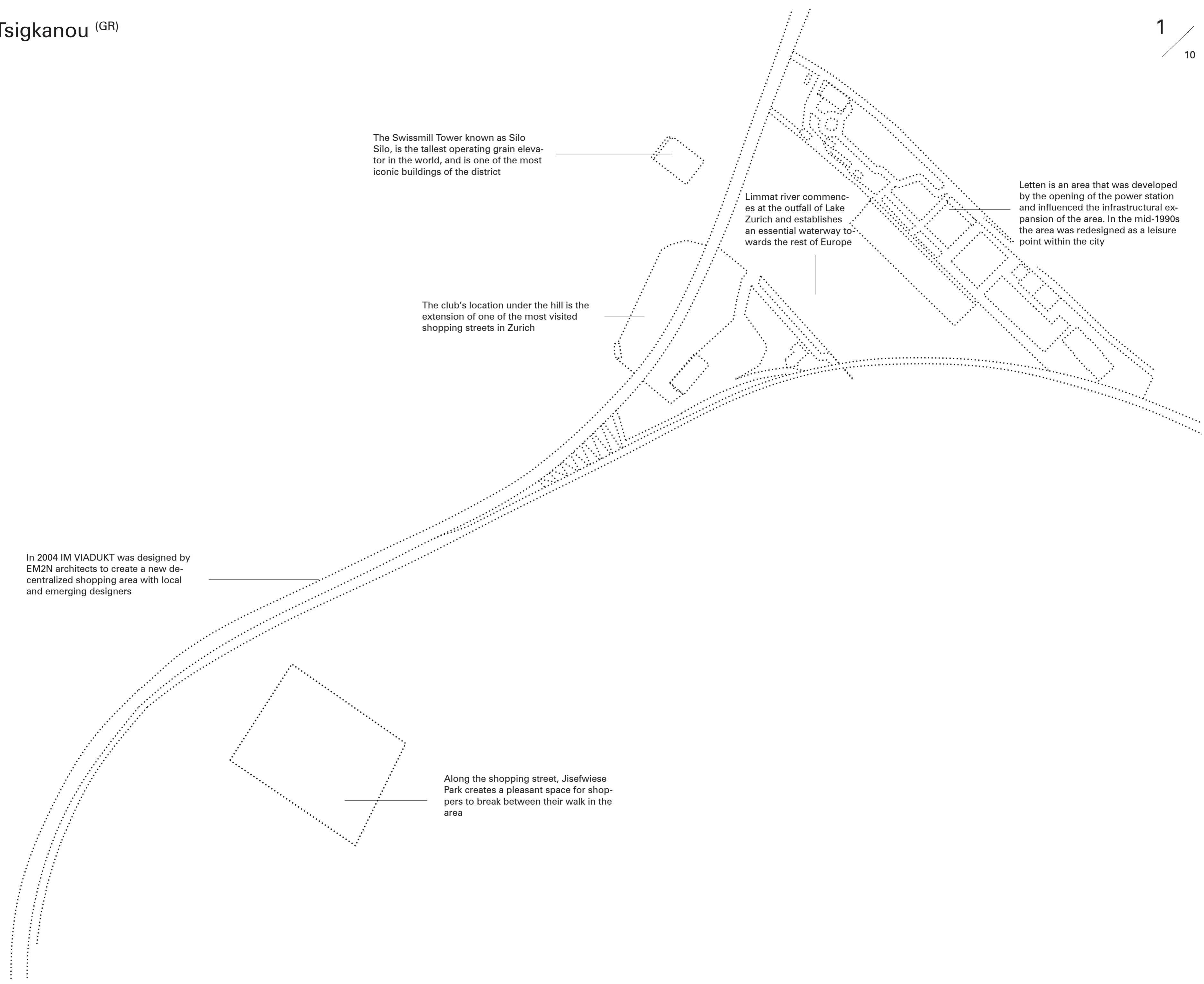


Viaduct 53



The Swissmill Tower known as Silo Silo, is the tallest operating grain elevator in the world, and is one of the most iconic buildings of the district

Limmat river commences at the outfall of Lake Zurich and establishes an essential waterway towards the rest of Europe

Letten is an area that was developed by the opening of the power station and influenced the infrastructural expansion of the area. In the mid-1990s the area was redesigned as a leisure point within the city

The club's location under the hill is the extension of one of the most visited shopping streets in Zurich

In 2004 IM VIADUKT was designed by EM2N architects to create a new decentralized shopping area with local and emerging designers

Along the shopping street, Jisefwiese Park creates a pleasant space for shoppers to break between their walk in the area

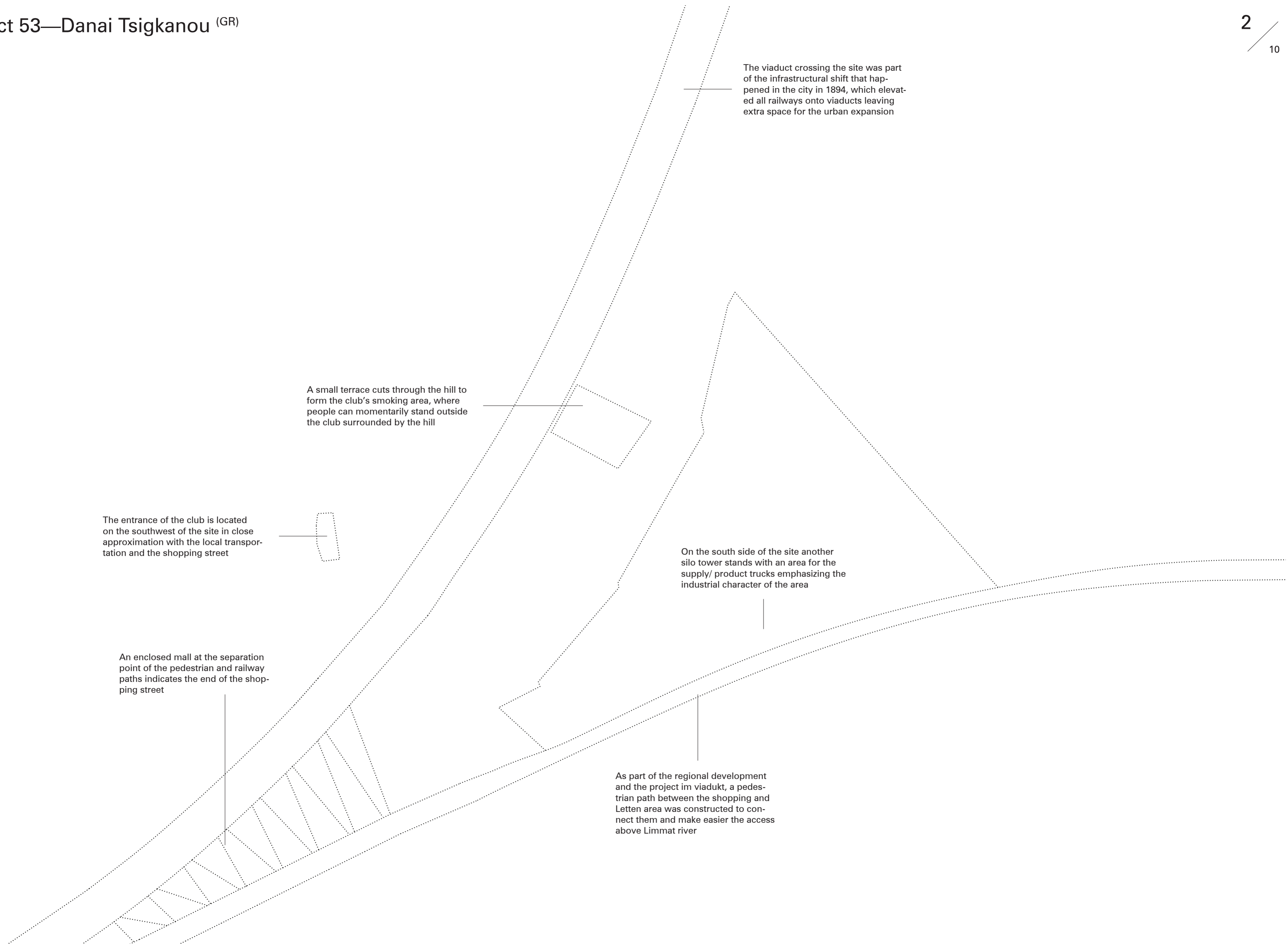


Site Plan
1:2500

- 1 Silo Silo
- 2 Limmat River
- 3 Site
- 4 Extension of Letten area
- 5 Shopping Street
- 6 Josefwiese Park

- Parks
- Water
- Urban Fabric - Buildings
- Urban Fabric

0 25 50 100 m



The viaduct crossing the site was part of the infrastructural shift that happened in the city in 1894, which elevated all railways onto viaducts leaving extra space for the urban expansion

A small terrace cuts through the hill to form the club's smoking area, where people can momentarily stand outside the club surrounded by the hill

The entrance of the club is located on the southwest of the site in close approximation with the local transportation and the shopping street

An enclosed mall at the separation point of the pedestrian and railway paths indicates the end of the shopping street

On the south side of the site another silo tower stands with an area for the supply/ product trucks emphasizing the industrial character of the area

As part of the regional development and the project im viadukt, a pedestrian path between the shopping and Letten area was constructed to connect them and make easier the access above Limmat river

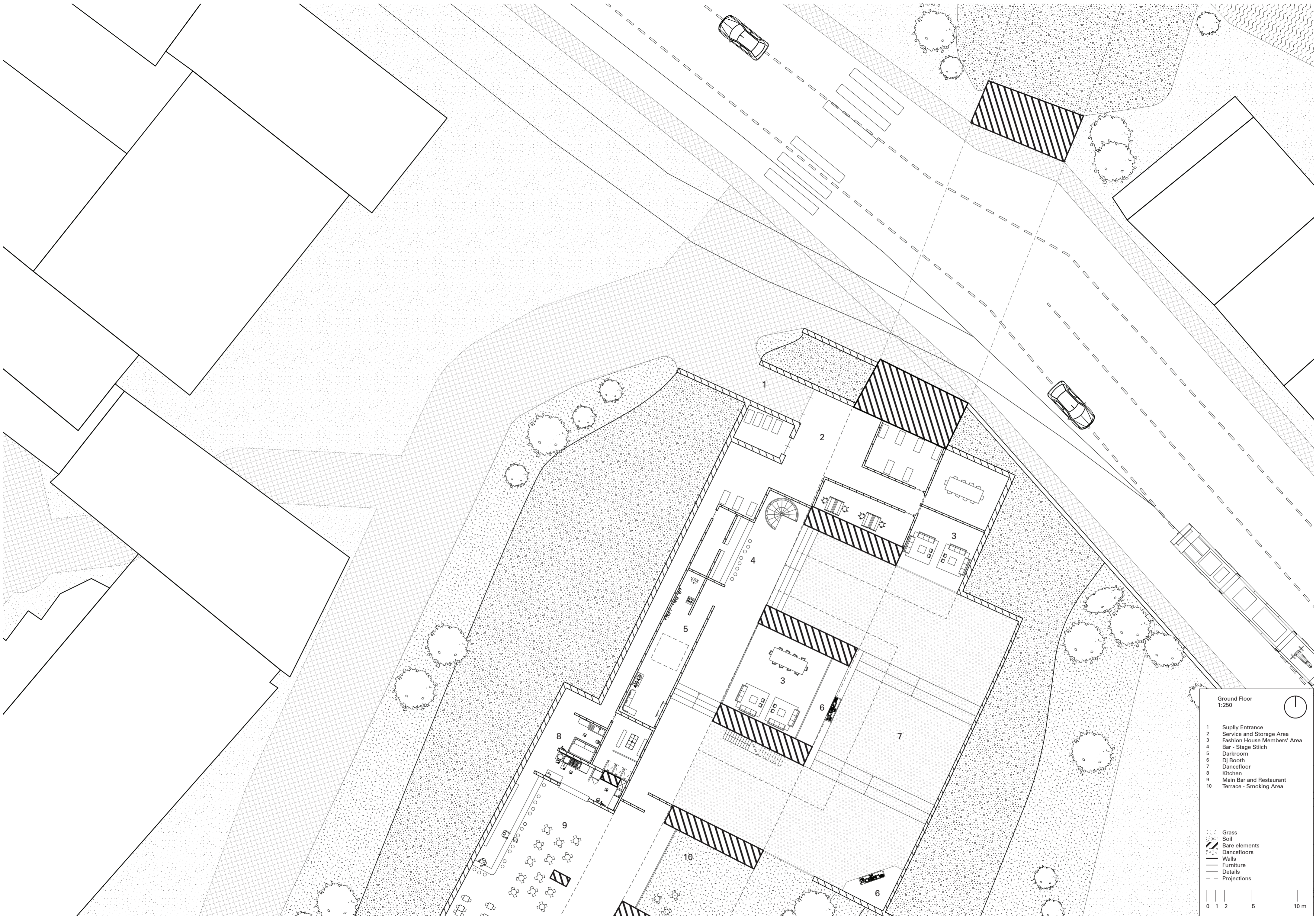


Top View
1:250

1 Railway
2 Main Entrance
3 Terrace - Smoking Area
4 Silo Truck Parking
5 *Im Viadukt* Shopping Mall
6 Pedestrian path to Letten area

Parks
 Water
 Urban Fabric - Buildings
 Urban Fabric

0 1 2 5 10 m

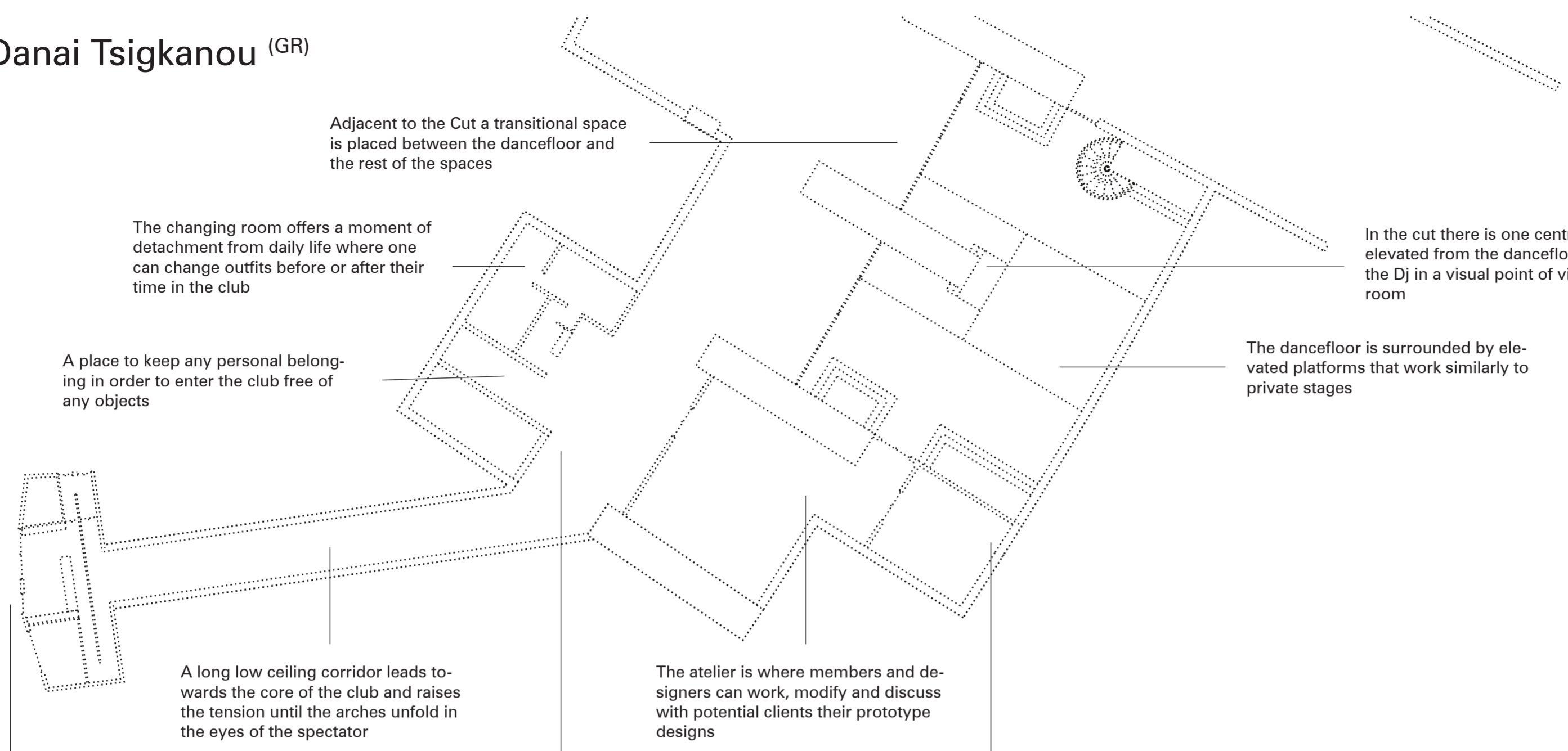


Ground Floor
1:250

- 1 Supply Entrance
- 2 Service and Storage Area
- 3 Fashion House Members' Area
- 4 Bar - Stage Stlich
- 5 Darkroom
- 6 DJ Booth
- 7 Dancefloor
- 8 Kitchen
- 9 Main Bar and Restaurant
- 10 Terrace - Smoking Area

- Grass
- Soil
- Bar elements
- Dancefloors
- Walls
- Furniture
- Details
- Projections





Adjacent to the Cut a transitional space is placed between the dancefloor and the rest of the spaces

The changing room offers a moment of detachment from daily life where one can change outfits before or after their time in the club

A place to keep any personal belonging in order to enter the club free of any objects

In the cut there is one central Dj Booth elevated from the dancefloor placing the Dj in a visual point of view from room

The dancefloor is surrounded by elevated platforms that work similarly to private stages

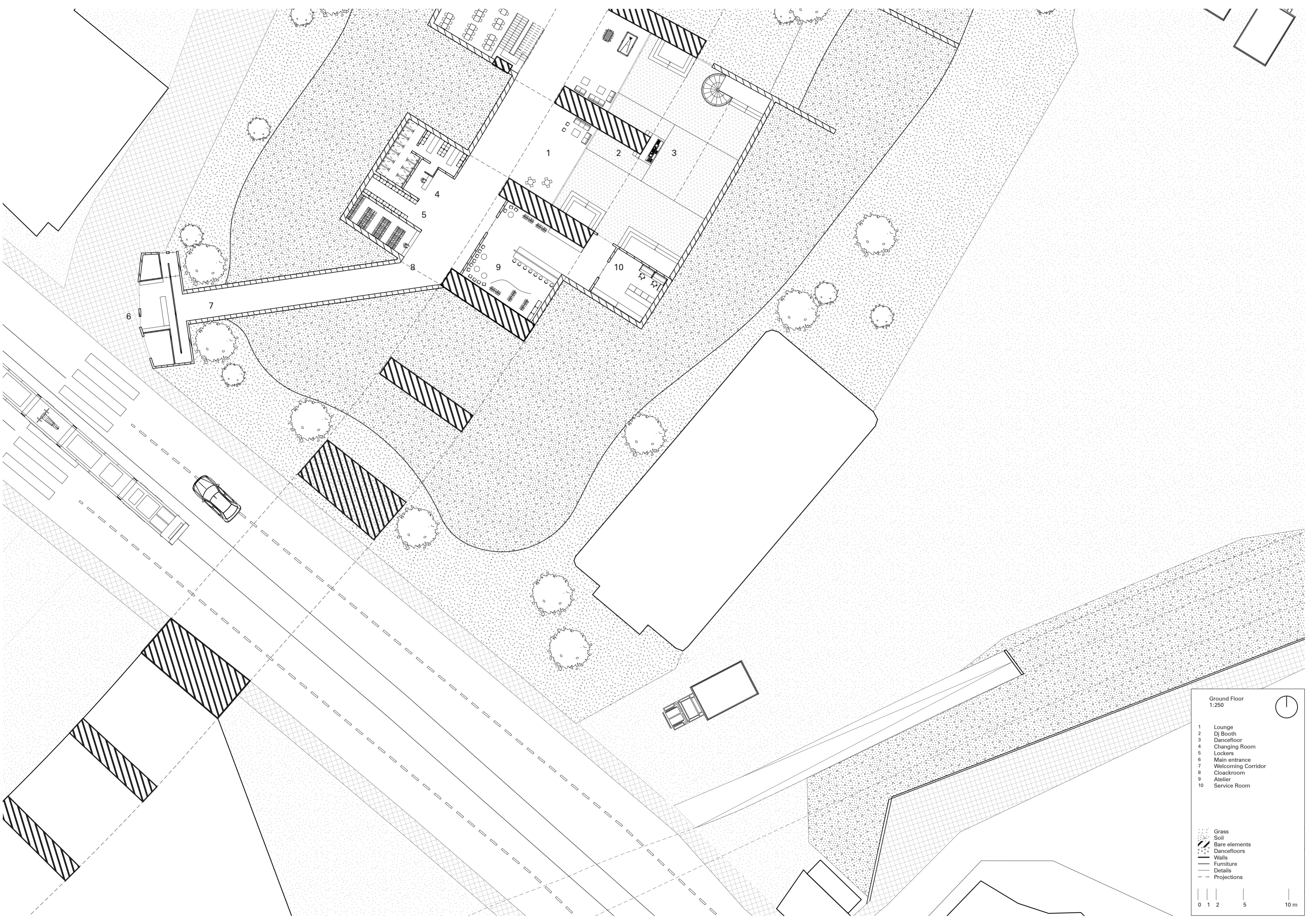
A long low ceiling corridor leads towards the core of the club and raises the tension until the arches unfold in the eyes of the spectator

The atelier is where members and designers can work, modify and discuss with potential clients their prototype designs

The street food vendor on the southwest corner of the site hides the entrance, which in turn arouses curiosity and the urge to explore

The cloakroom is the first stop where one can start taking the layers of clothes off to reveal their spectacular outfit

A smaller service room serves the needs of the south rooms and areas with essential technical equipment

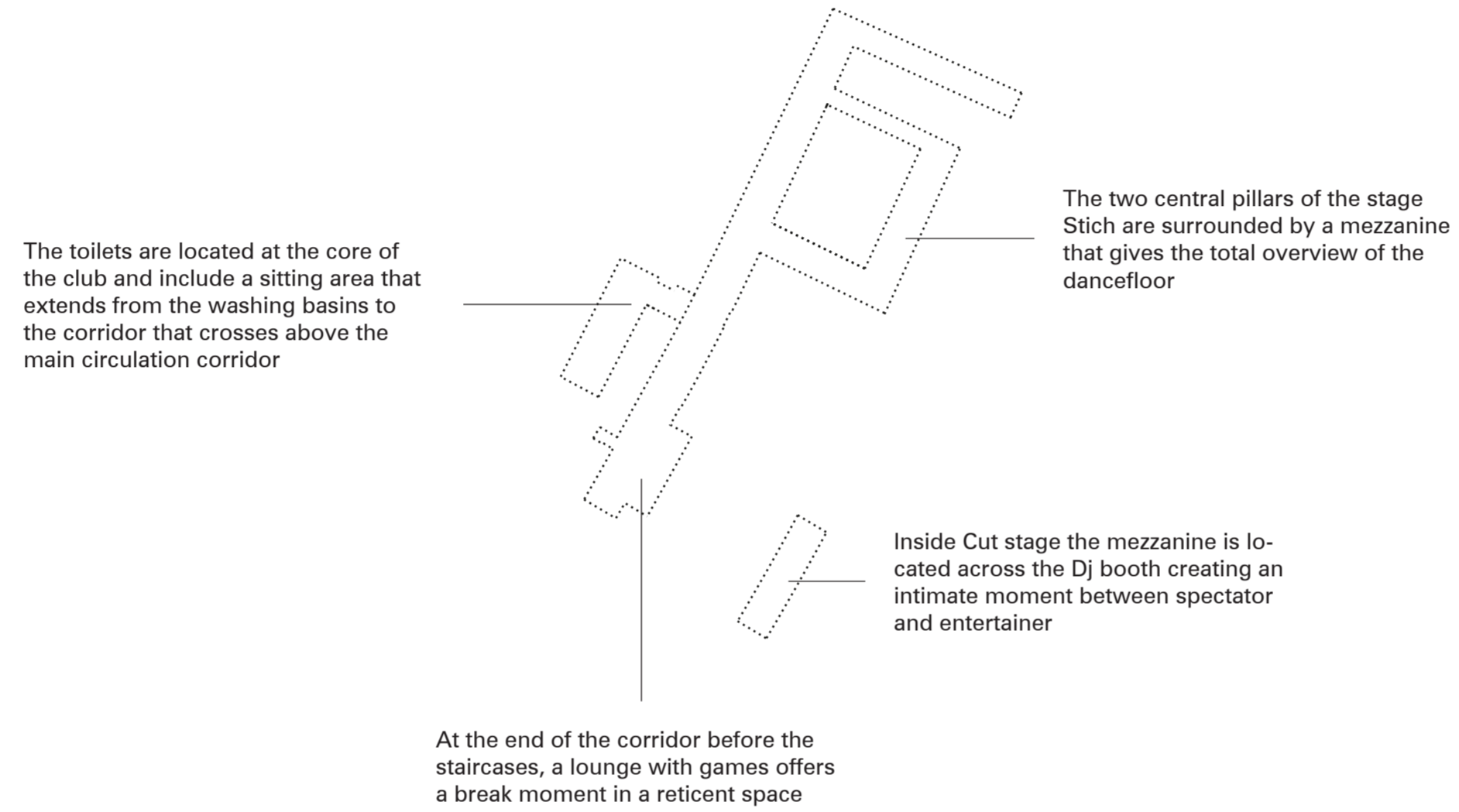


Ground Floor
1:250

1 Lounge
2 DJ Booth
3 Dancefloor
4 Changing Room
5 Lockers
6 Main entrance
7 Welcoming Corridor
8 Cloackroom
9 Atelier
10 Service Room

Grass
Soil
Bare elements
Dancefloors
Walls
Furniture
Details
Projections

0 1 2 5 10 m





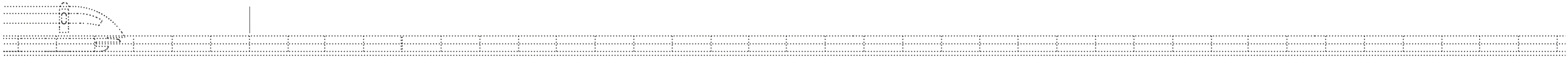
First Floor
 1:250

1 Mezzanine - stage Stitch
 2 Toilets
 3 Lounge
 4 Mezzanine - stage Cut

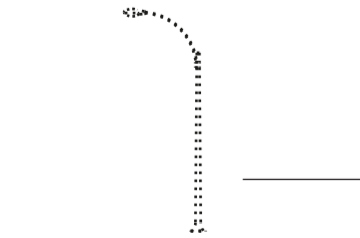
Grass
 Soil
 Bare elements
 Dancefloors
 Walls
 Furniture
 Details
 Projections

0 1 2 5 10 m

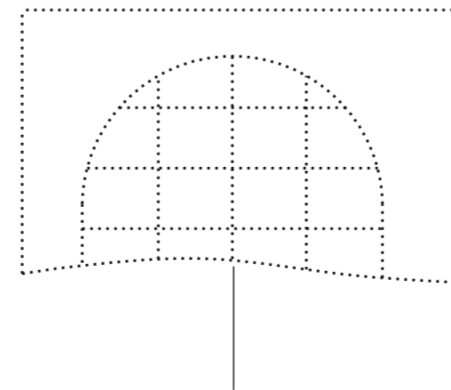
The railway is part of the club's image as a landmark one can bring to memory when referring to the location



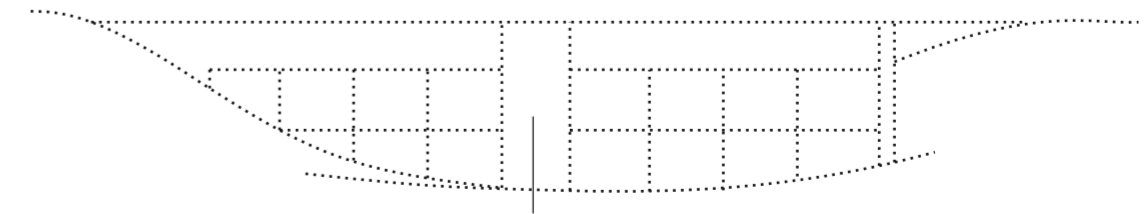
The club and the shopping street are divided by a street that leads directly to the central train station

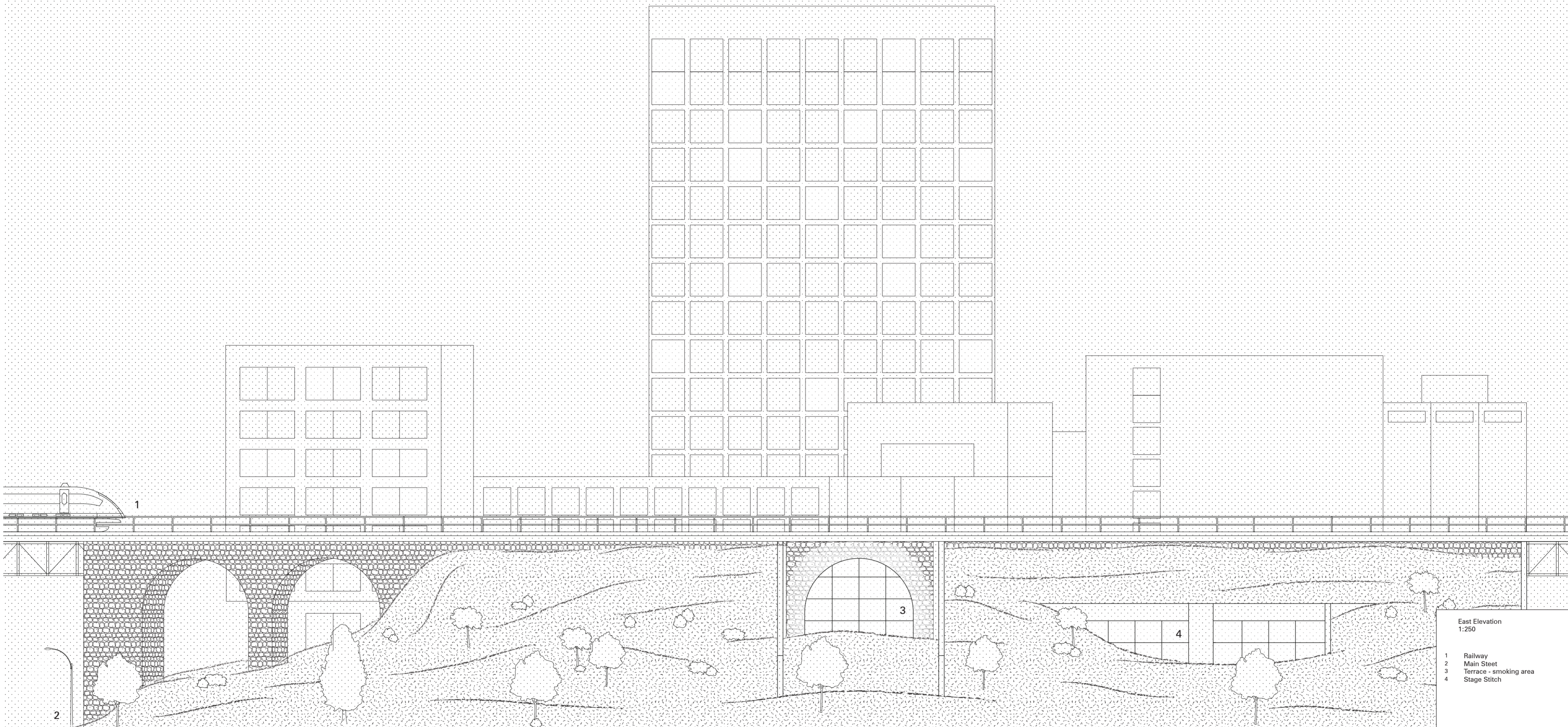


The terrace's cut through the hill is visible from the pedestrian path revealing a bit of the interior



Some high-raised openings in the stage of Stich give a glimpse of the interior increasing the curiosity for the parties and the things inside



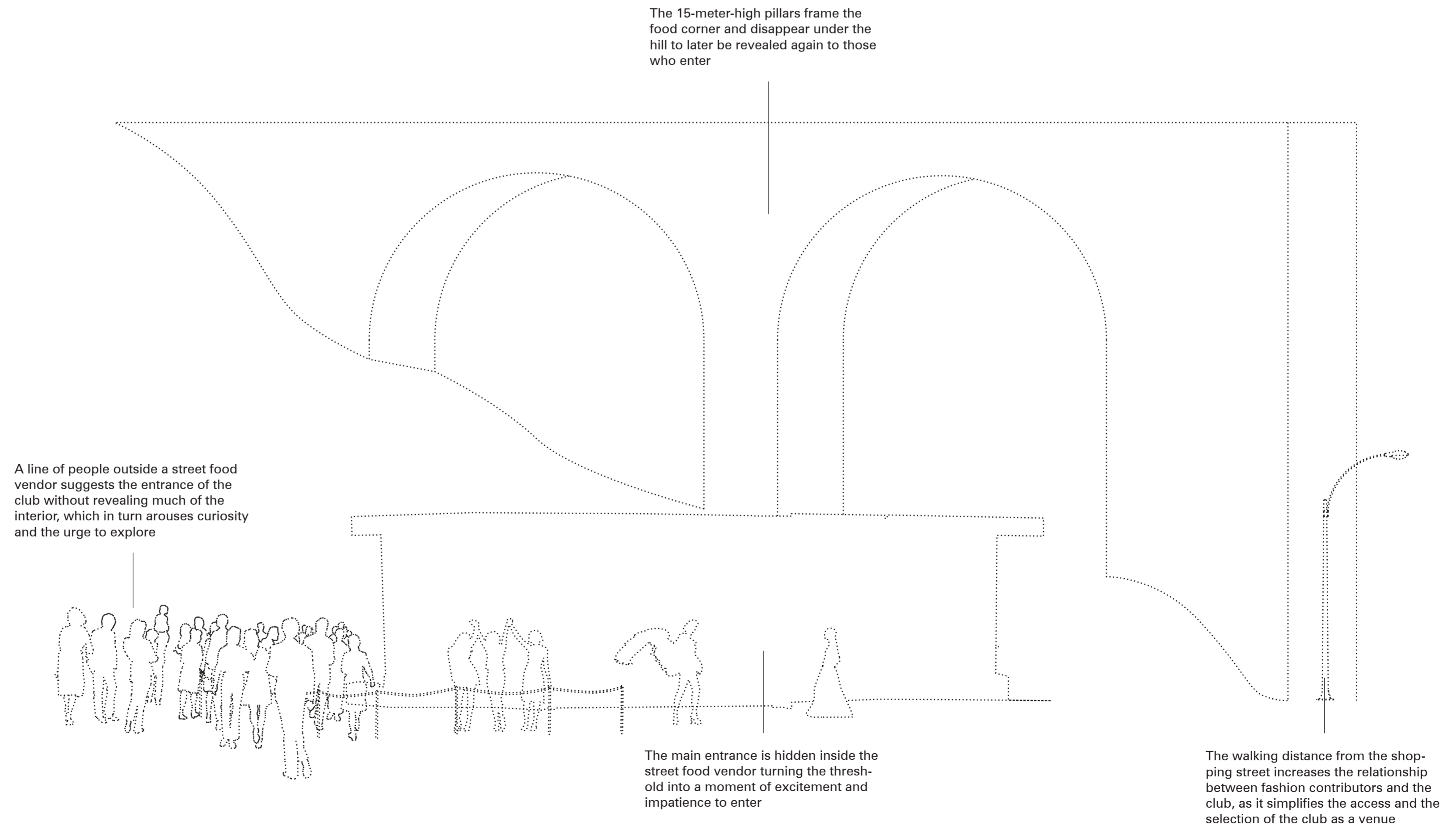


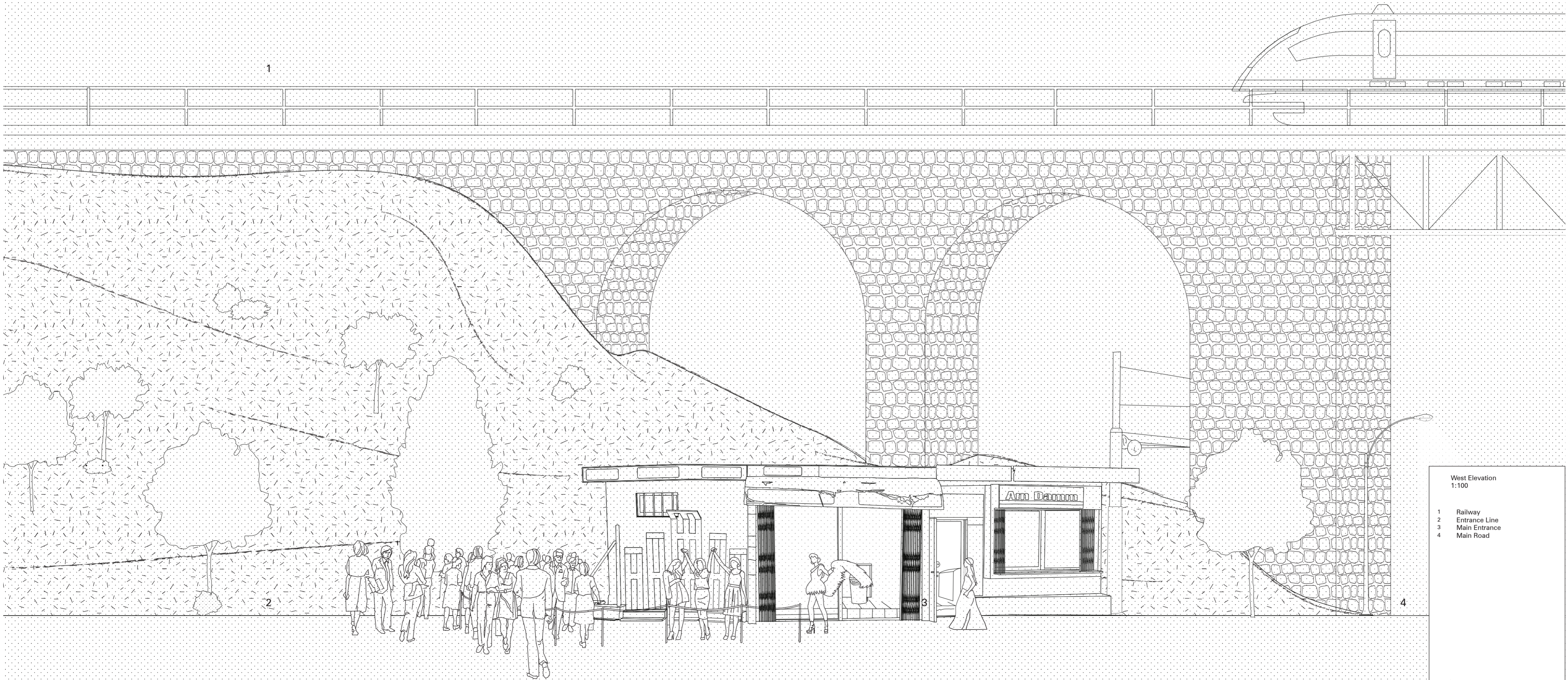
East Elevation
1:250

- 1 Railway
- 2 Main Street
- 3 Terrace - smoking area
- 4 Stage Stitch

Grass
Stones

0 1 2 5 10 m





1

2

3

4

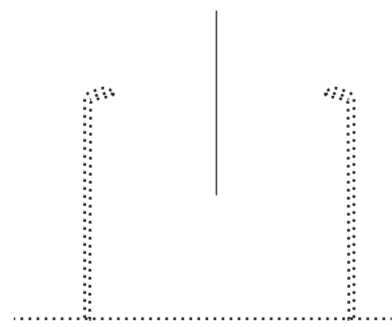
West Elevation
1:100

- 1 Railway
- 2 Entrance Line
- 3 Main Entrance
- 4 Main Road

Grass
Stones

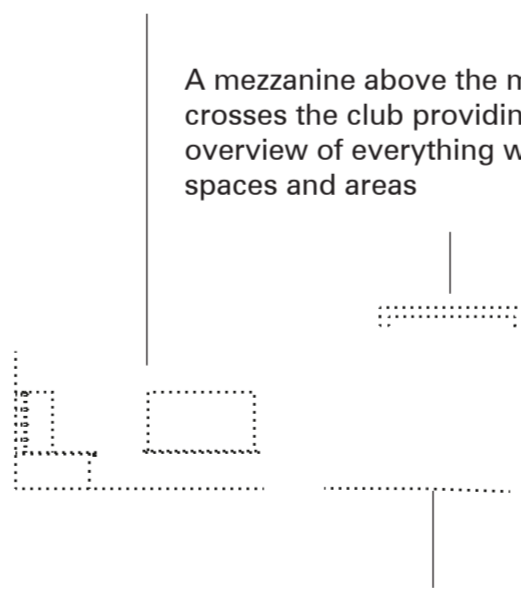
0 1 2 3 4 m

The pedestrian path that extends from the shopping street towards Limmat river passes by the west side of the site



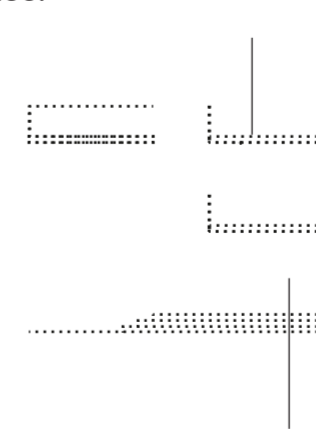
As one of the break areas the shared space of the main bar and restaurant of the club gives a moment of meeting or resting between the two stages, in the core of the club

A mezzanine above the main corridor crosses the club providing a clear overview of everything within the spaces and areas

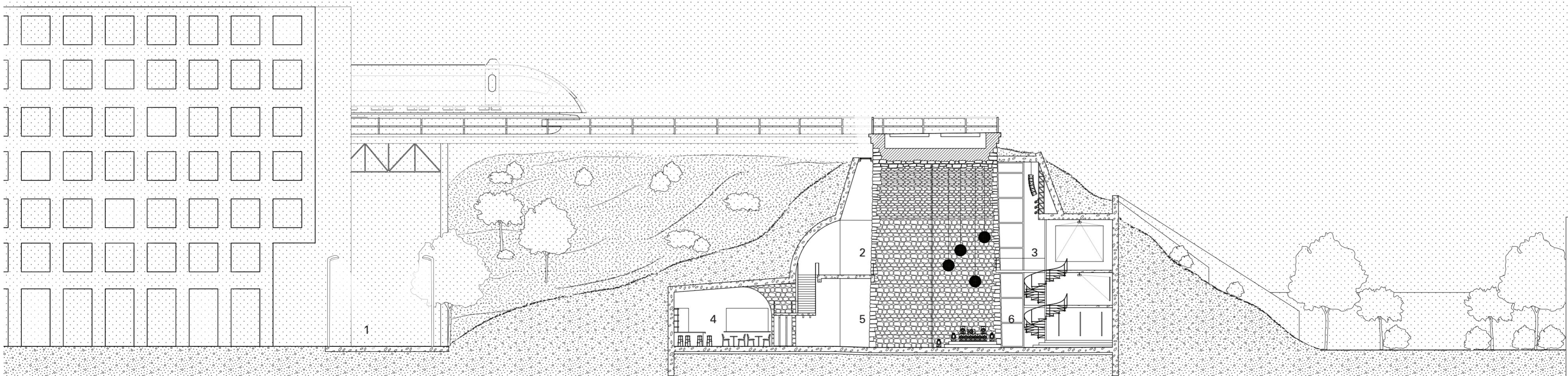


The main corridor is the primary circulation axis that connects all spaces

Withing stage Cut various levels elevate the spectators from the dance-floor



Inside Cut, sound and light systems are exposed to the spectator for the maximization of the experience



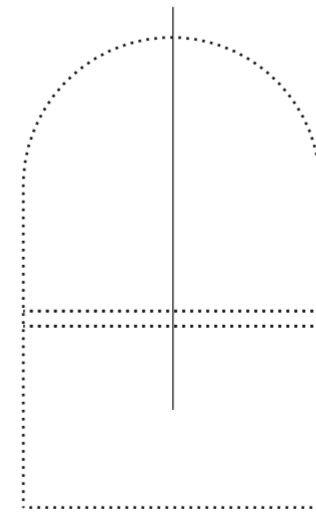
Cross Section
1:250

- 1 Pedestrian Path
- 2 Mezzanine - Main Corridor
- 3 Mezzanine - Stage Cut
- 4 Main Bar and Restaurant
- 5 Main Corridor
- 6 Stage - Cut

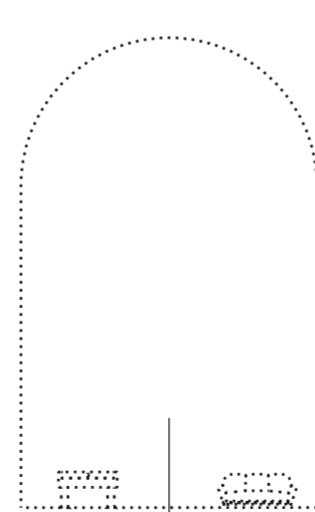
- Grass
- Soil
- Bare elements
- Stone
- Walls
- Furniture
- Details
- Projections

0 1 2 5 10 m

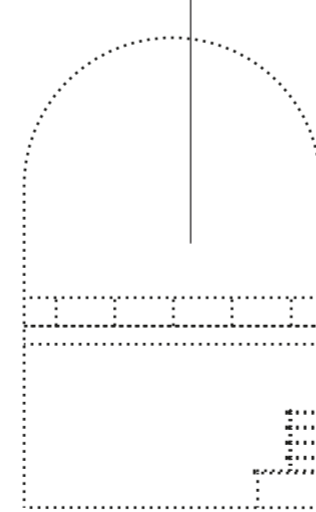
Enclosed spaces are accessed only by the members of the club and Fashion house Zurich. Atelier is the space for designers to work on their prototypes



Outside of the stage Cut the lounge where people can take a break and play games



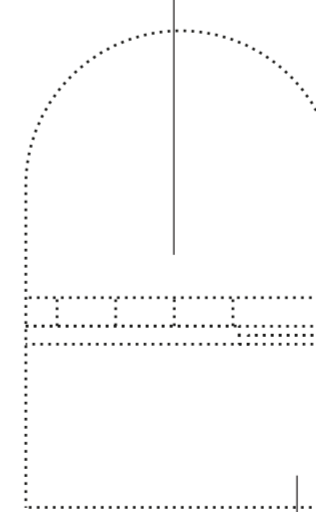
Above the main corridor a mezzanine unfolds across the club following the direction of the railway



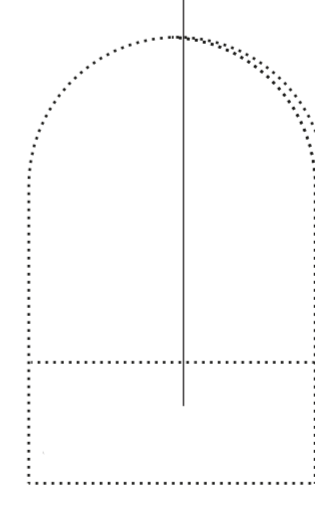
The area of the main bar and restaurant at the core of the building is designed as the only main area with sitting arrangements



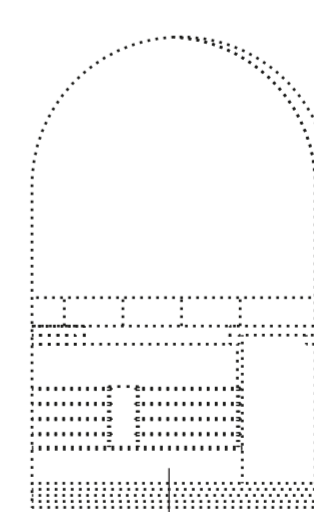
Inside the Stich the mezzanine offers a visual connection with the dancefloor



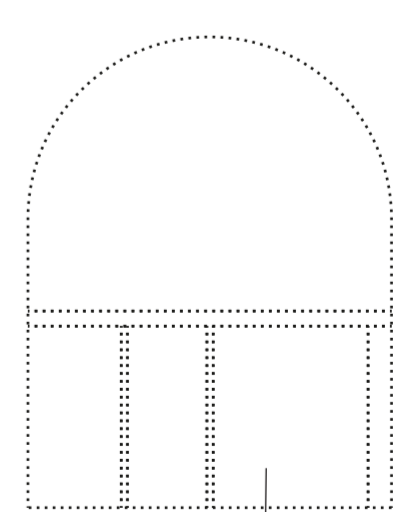
The Stich offers various levels where one can stand and dance around the two pillars in the center of the room



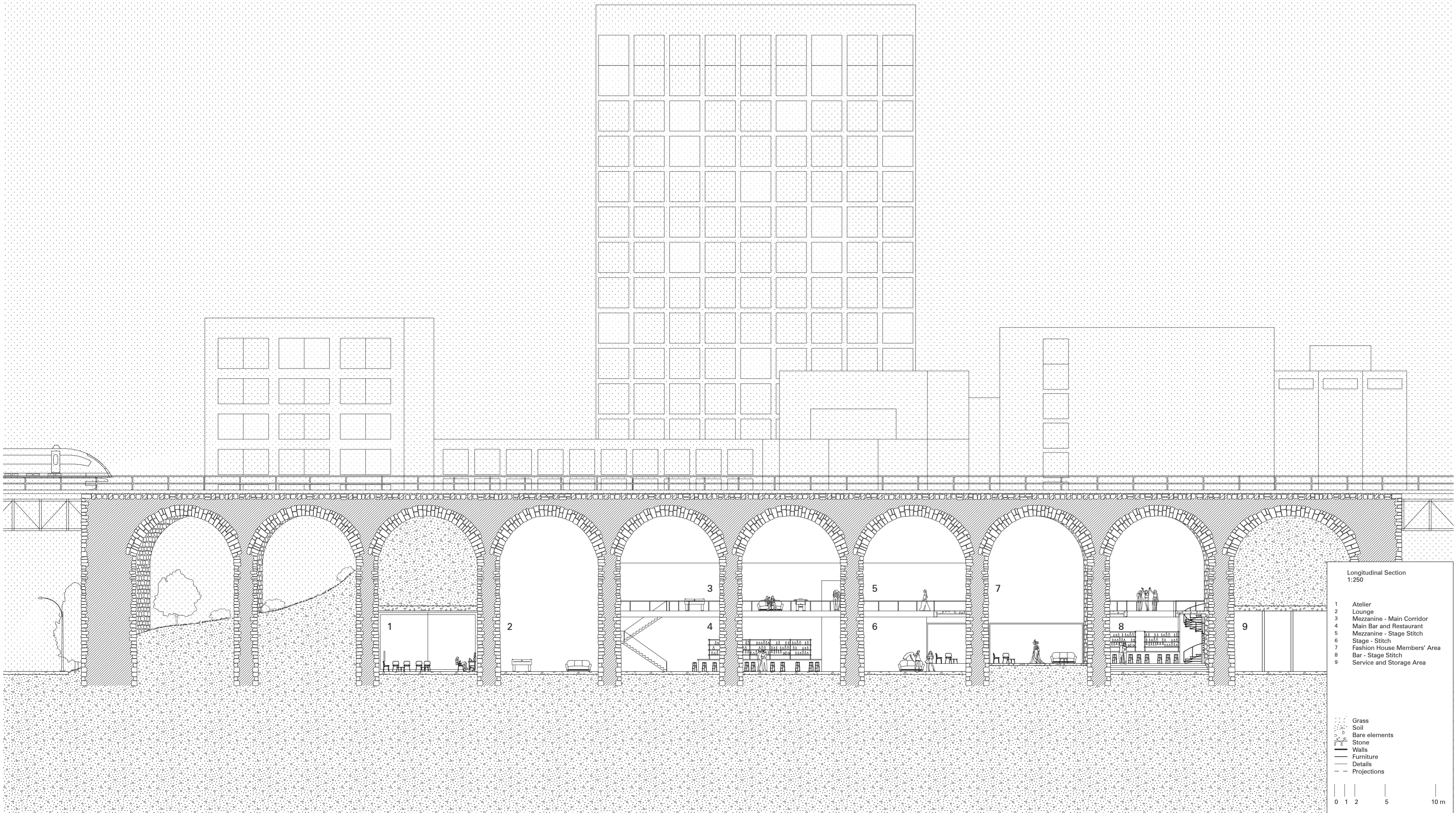
In between the central pillars one of the member's enclosed spaces for private meetings places them in the core of the room



There is a separate smaller bar inside the Stich that serves only those in this stage and the enclosed member rooms



The services and storage areas are between the closest pillars to the road for a direct connection for the supplies

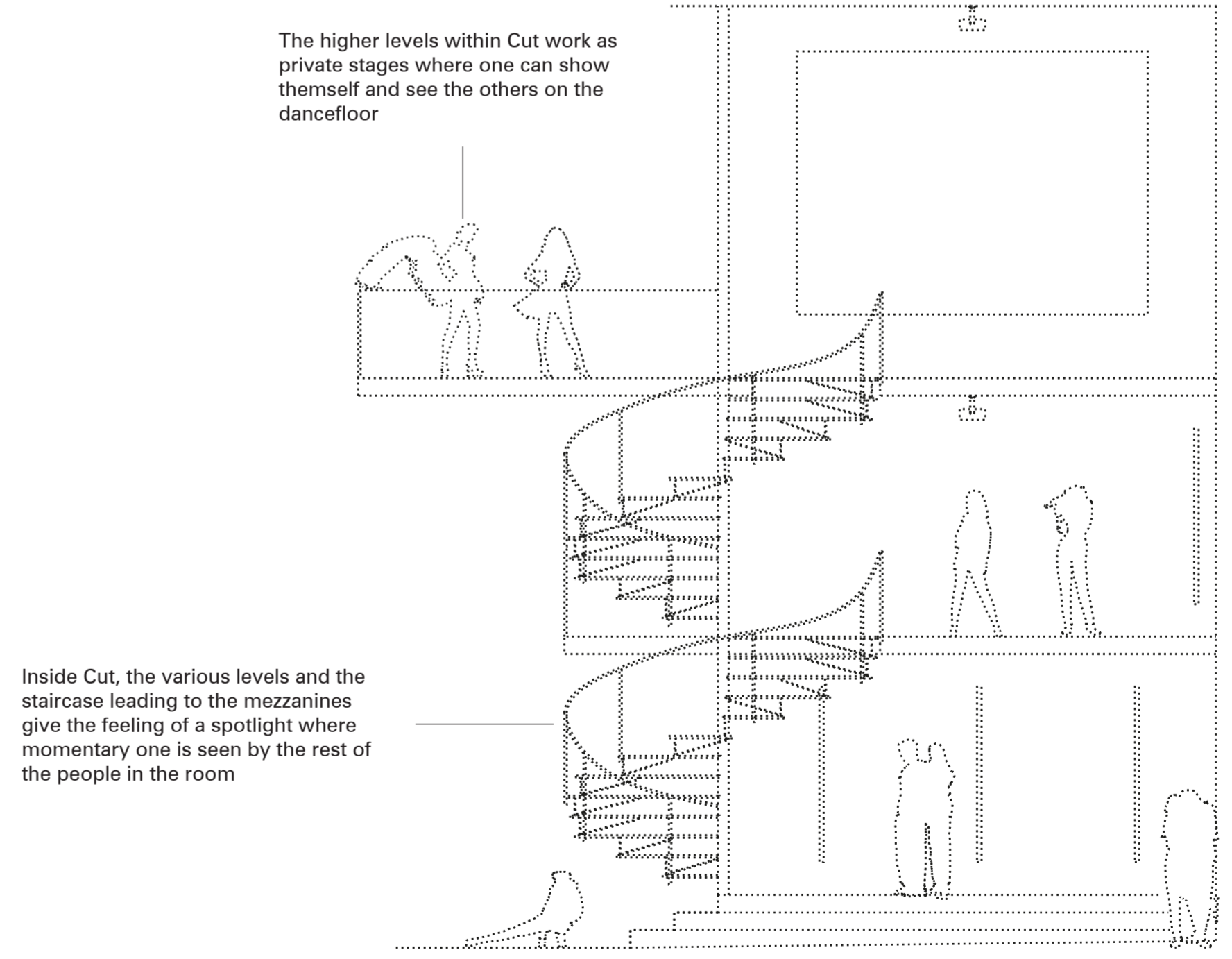
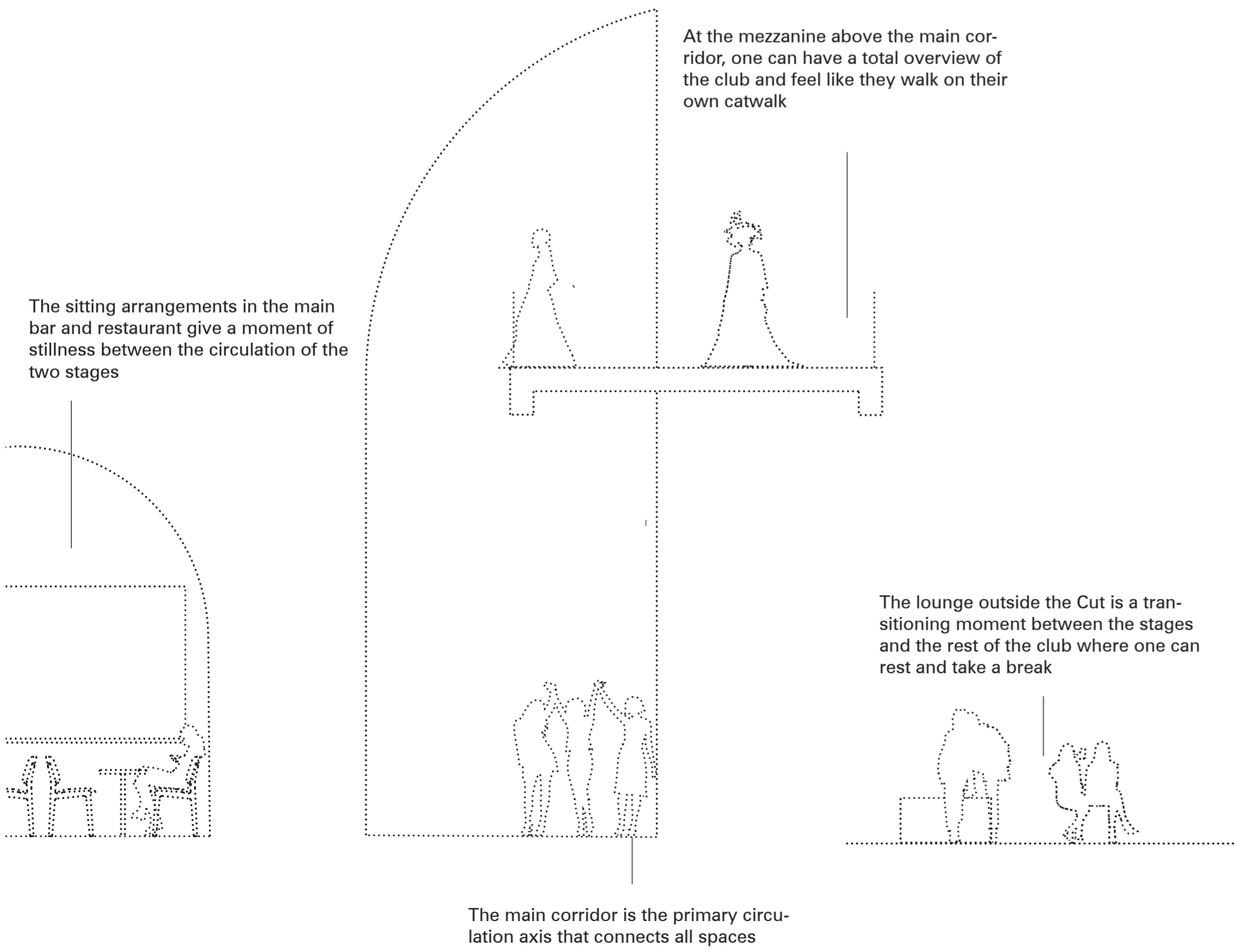


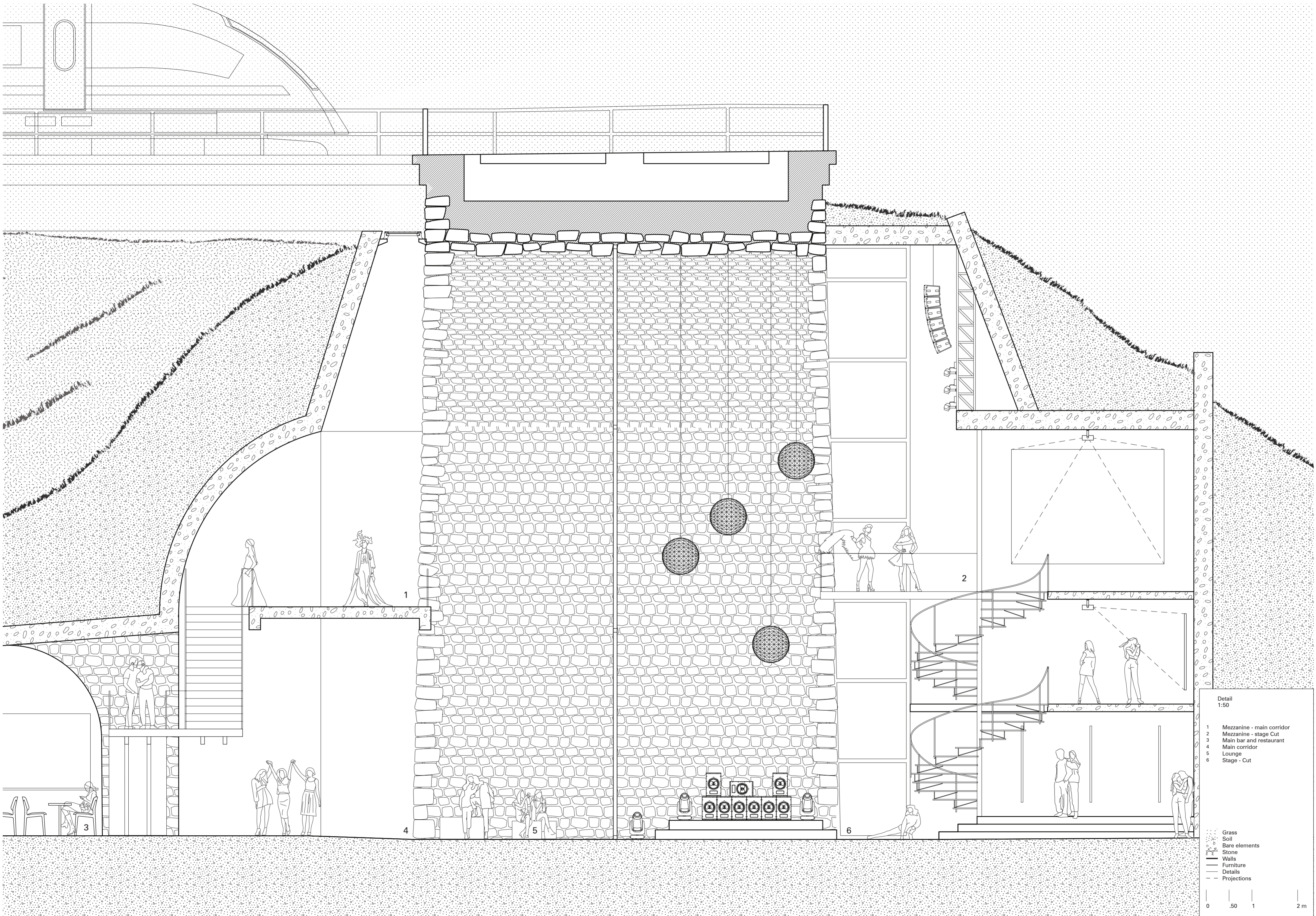
Longitudinal Section
1:250

- 1 Atelier
- 2 Lounge
- 3 Mezzanine - Main Corridor
- 4 Main Bar and Restaurant
- 5 Mezzanine - Stage Stitch
- 6 Stage - Stitch
- 7 Fashion House Members' Area
- 8 Bar - Stage Stitch
- 9 Service and Storage Area

- Grass
- Soil
- Bar elements
- Stone
- Walls
- Furniture
- Details
- Projections

0 1 2 5 10 m





Detail
1:50

- 1 Mezzanine - main corridor
- 2 Mezzanine - stage Cut
- 3 Main bar and restaurant
- 4 Main corridor
- 5 Lounge
- 6 Stage - Cut

- Grass
- Soil
- Bare elements
- Stone
- Walls
- Furniture
- Details
- Projections

0 .50 1 2 m