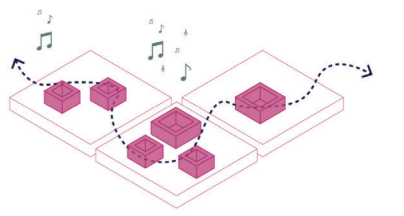


Rotterdam North and her Whisperroutes



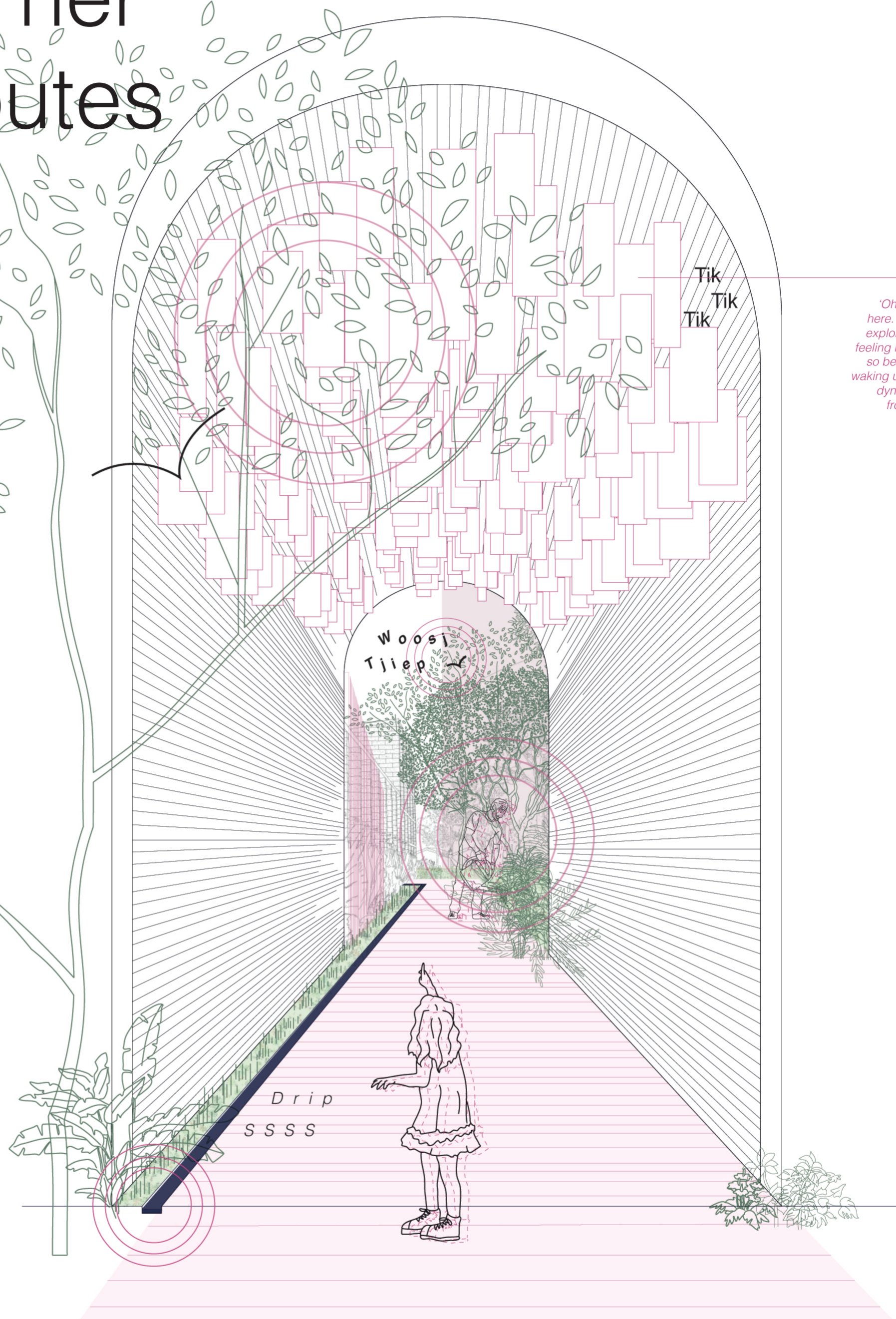
Louise Kuijper
38 years old

Visits: Not on purpose
Duration: Varies

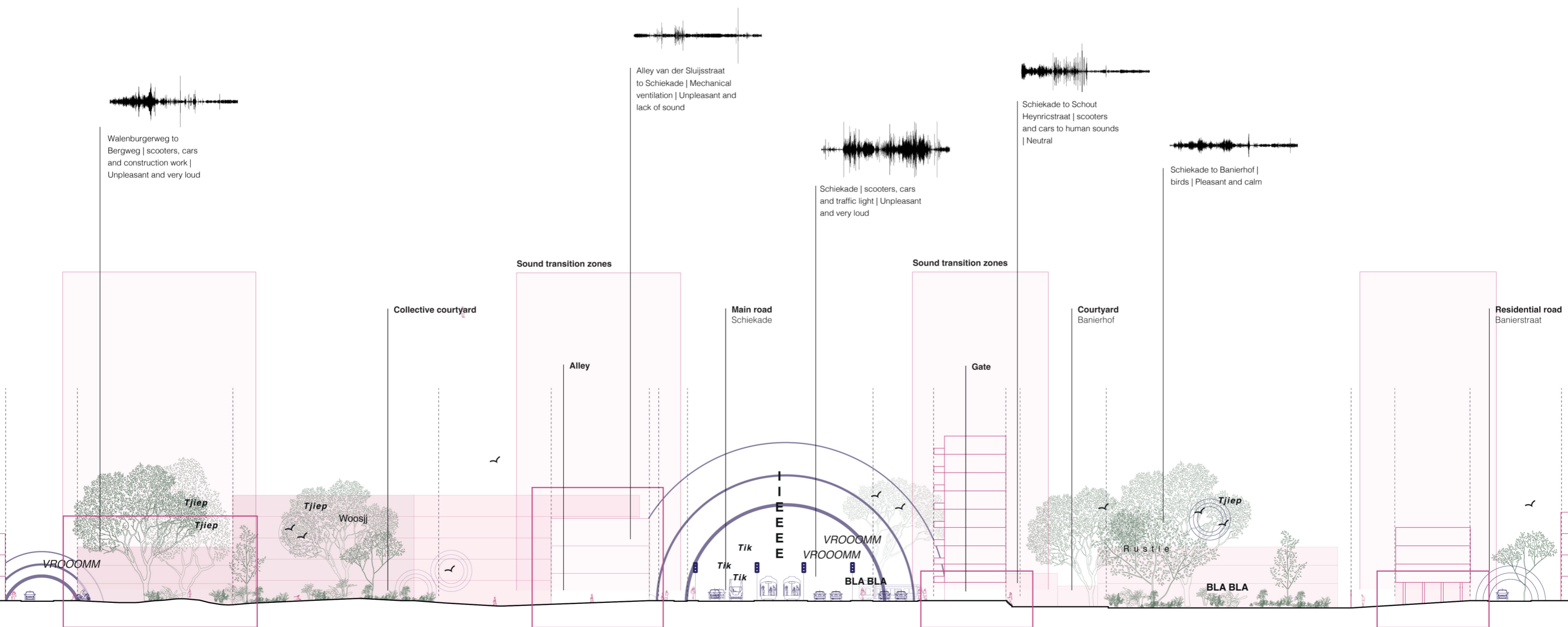
Sound perception note: Louise does not have a specific sound recommendation.

The soundscape perception narrative:
'Oh hello! What a coincidence to meet you here. I was just walking with my dog. We like exploring all parts of the city and today I was feeling like walking through the city center. It is so beautiful to see the sun rising and the city waking up. Here you can observe the changing dynamics very well; the noise just changes from place to place. See you somewhere around! Louise'

The intended route is not a straight line from A to B, but instead a concentration of epiphanies. By this, I mean that the value of inward-oriented spaces is realized the moment you hear (or see) them, without needing to take a certain route. The quiet quality can be maintained in this manner.

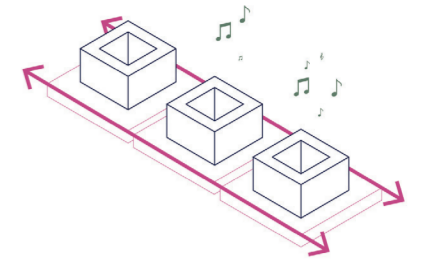


Ear-perspective new sound transition
(Author, 2022)

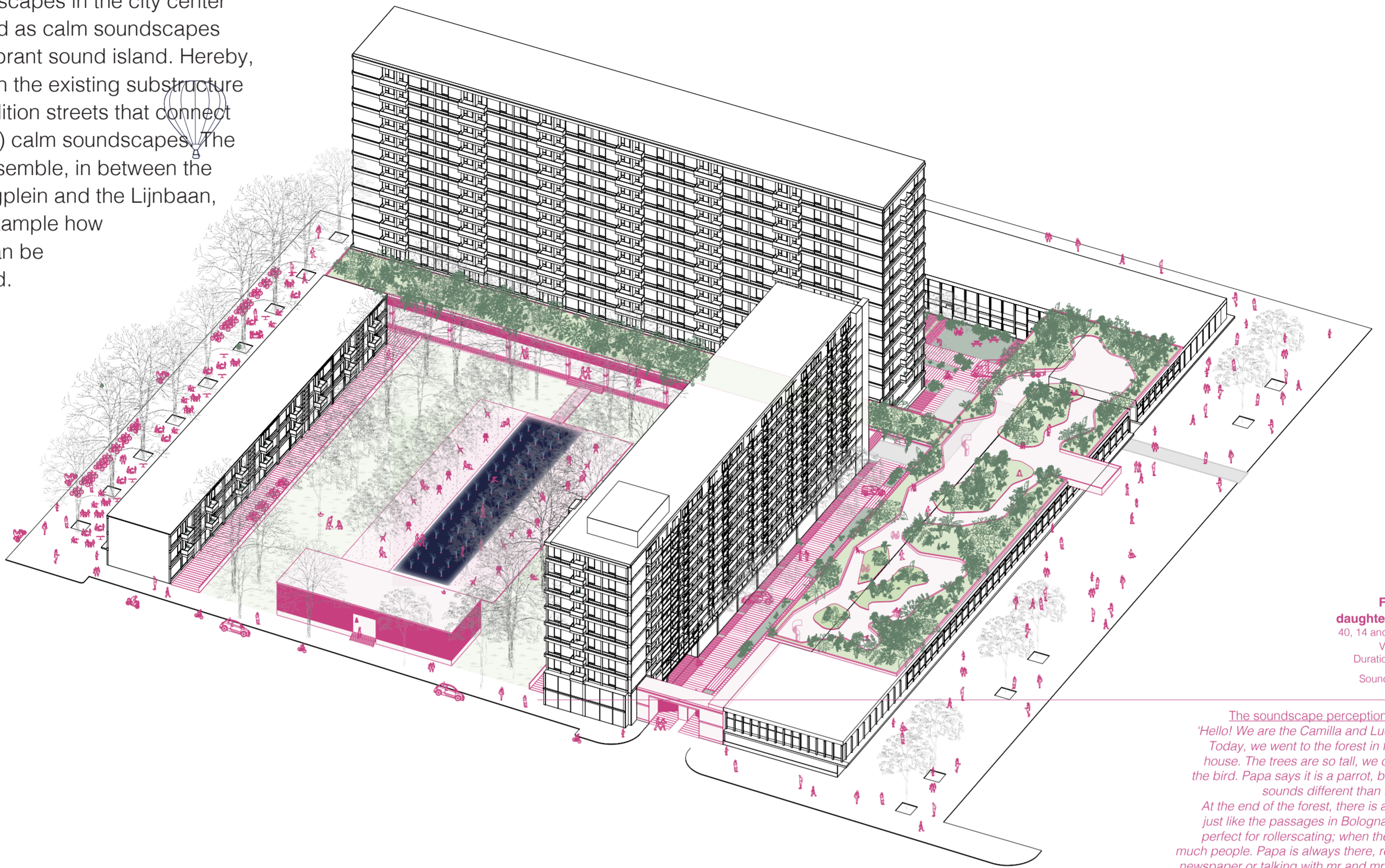


Approach and current sound observations
(Author, 2022)

The Lijnbaan Ensemble as urban escape



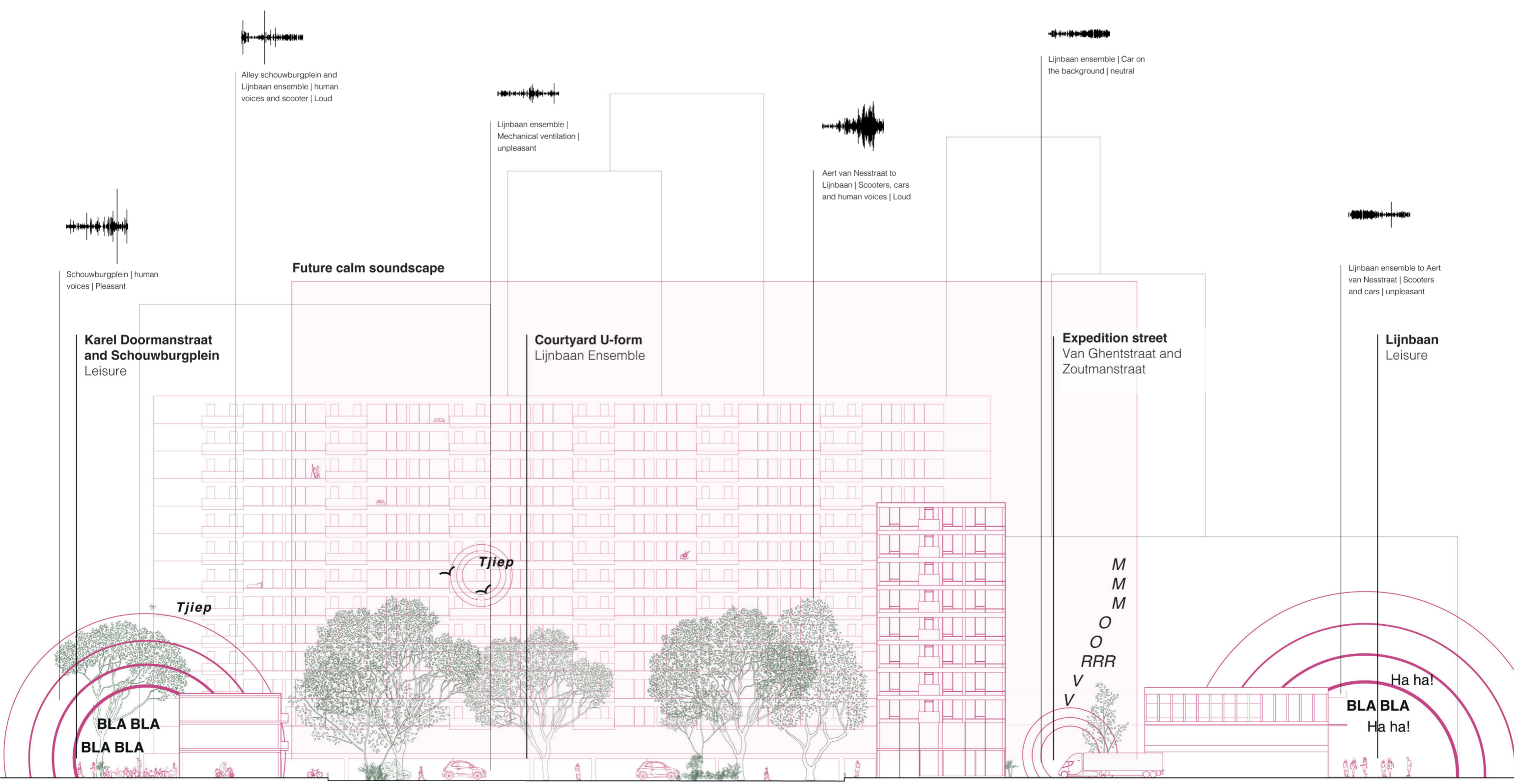
The urban escapes in the city center are designed as calm soundscapes within the vibrant sound island. Hereby, I worked with the existing substructure of the expedition streets that connect the (missing) calm soundscapes. The Lijnbaan Ensemble, in between the Schouburgplein and the Lijnbaan, shows an example how the vision can be implemented.



Father and daughters Galloni
 40, 14 and 9 years old
 Visits: Weekly
 Duration: 4-6 hours
 Sound perception note: None

The soundscape perception narrative:
 'Hello! We are the Camilla and Lucy Galloni. Today, we went to the forest in front of our house. The trees are so tall, we cannot see the bird. Papa says it is a parrot, because he sounds different than the others. At the end of the forest, there is a passage, just like the passages in Bologna. They are perfect for rollerskating; when there are not much people. Papa is always there, reading the newspaper or talking with mr and mrs de Jong. When its getting dark we go home through the forest again. The wind whispers through the trees and we whisper to papa, because that is polite to do when people sleep. Goodnight, Camilla and Lucy!

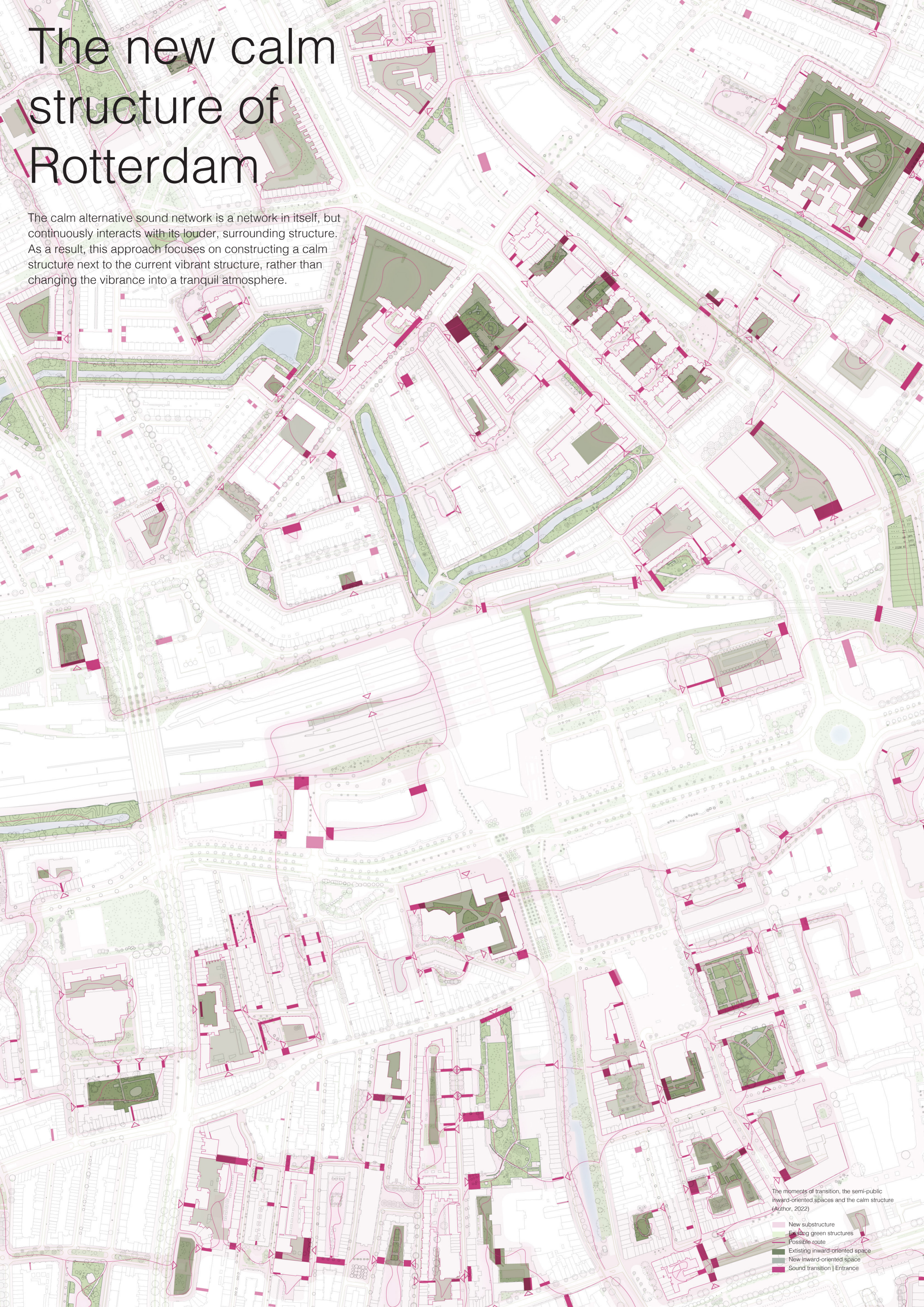
The new calm soundscape
 (Author, 2022)



Approach and current sound observations
 (Author, 2022)

The new calm structure of Rotterdam

The calm alternative sound network is a network in itself, but continuously interacts with its louder, surrounding structure. As a result, this approach focuses on constructing a calm structure next to the current vibrant structure, rather than changing the vibrance into a tranquil atmosphere.



The moments of transition, the semi-public inward-oriented spaces and the calm structure (Author, 2022)

- New substructure
- Existing green structures
- Possible route
- Existing inward-oriented space
- New inward-oriented space
- Sound transition | Entrance