

Ship- And island-based atmospheric soundings from the 2020 EUREC4A field campaign

Christine Stephan, Claudia; Schnitt, Sabrina; Schulz, Hauke; Bellenger, Hugo; De Szoeki, Simon P.; Acquistapace, Claudia; Baier, Katharina; Dauhut, Thibaut; Helfer, Kevin C.; More Authors

DOI

[10.5194/essd-13-491-2021](https://doi.org/10.5194/essd-13-491-2021)

Publication date

2021

Document Version

Final published version

Published in

Earth System Science Data

Citation (APA)

Christine Stephan, C., Schnitt, S., Schulz, H., Bellenger, H., De Szoeki, S. P., Acquistapace, C., Baier, K., Dauhut, T., Helfer, K. C., & More Authors (2021). Ship- And island-based atmospheric soundings from the 2020 EUREC4A field campaign. *Earth System Science Data*, 13(2), 491-514. <https://doi.org/10.5194/essd-13-491-2021>

Important note

To cite this publication, please use the final published version (if applicable).
Please check the document version above.

Copyright

Other than for strictly personal use, it is not permitted to download, forward or distribute the text or part of it, without the consent of the author(s) and/or copyright holder(s), unless the work is under an open content license such as Creative Commons.

Takedown policy

Please contact us and provide details if you believe this document breaches copyrights.
We will remove access to the work immediately and investigate your claim.



Ship- and island-based atmospheric soundings from the 2020 EUREC⁴A field campaign

Claudia Christine Stephan¹, Sabrina Schnitt², Hauke Schulz¹, Hugo Bellenger³, Simon P. de Szoeké⁴,
Claudia Acquistapace^{2,★}, Katharina Baier^{1,★}, Thibaut Dauhut^{1,★}, Rémi Laxenaire^{5,★},
Yanmichel Morfa-Avalos^{1,★}, Renaud Person^{6,7,★}, Estefanía Quiñones Meléndez^{4,★},
Gholamhossein Bagheri^{8,☆}, Tobias Böck^{2,☆}, Alton Daley^{9,☆}, Johannes Güttler^{10,☆}, Kevin C. Helfer^{11,☆},
Sebastian A. Los^{12,☆}, Almuth Neuberger^{1,☆}, Johannes Röttenbacher^{13,☆}, Andreas Raeke^{14,☆},
Maximilian Ringel^{1,☆}, Markus Ritschel^{1,☆}, Pauline Sadoulet^{15,☆}, Imke Schirmacher^{16,☆},
M. Katharina Stolla^{1,☆}, Ethan Wright^{5,☆}, Benjamin Charpentier¹⁷, Alexis Doerenbecher¹⁸,
Richard Wilson¹⁹, Friedhelm Jansen¹, Stefan Kinne¹, Gilles Reverdin⁷, Sabrina Speich³,
Sandrine Bony³, and Bjorn Stevens¹

¹Max Planck Institute for Meteorology, Hamburg, Germany

²Institute for Geophysics and Meteorology, University of Cologne, Cologne, Germany

³LMD/IPSL, CNRS, ENS, École Polytechnique, Institut Polytechnique de Paris, PSL,
Research University, Sorbonne Université, Paris, France

⁴College of Earth, Ocean, and Atmospheric Sciences, Oregon State University, Corvallis, Oregon, USA

⁵Center for Ocean-Atmospheric Prediction Studies, Florida State University, Tallahassee, Florida, USA

⁶Sorbonne Université, CNRS, IRD, MNHN, INRAE, ENS, UMS 3455, OSU Ecce Terra, Paris, France

⁷Sorbonne Université, LOCEAN, SU/CNRS/IRD/MNHN, Paris, France

⁸Laboratory for Fluid Physics, Pattern Formation and Biocomplexity, Max Planck Institute for Dynamics
and Self-Organization, Göttingen, Germany

⁹Caribbean Institute for Meteorology and Hydrology, Husbands, St. James, Barbados

¹⁰Max Planck Institute for Dynamics and Self-Organization, 37077 Göttingen, Germany

¹¹Department of Geoscience and Remote Sensing, Delft University of Technology, Delft, the Netherlands

¹²Department of Earth and Planetary Sciences, University of New Mexico, Albuquerque, New Mexico, USA

¹³Institute for Meteorology, University of Leipzig, Leipzig, Germany

¹⁴Deutscher Wetterdienst, Seewetteramt Hamburg, Seeschiffsberatung –
Bordwetterdienst, Hamburg, Germany

¹⁵Météo-France, Bordeaux, France

¹⁶University of Hamburg, Hamburg, Germany

¹⁷Meteomodem, Ury, France

¹⁸Météo-France and CNRS, CNRM-UMR 3589, 42 Av. G. Coriolis, 31057 Toulouse CEDEX, France

¹⁹Sorbonne Université, LATMOS/IPSL, INSU/CNRS, Paris, France

★These authors contributed equally to this work.

☆These authors also contributed equally to this work.

Correspondence: Claudia Christine Stephan (claudia.stephan@mpimet.mpg.de)

Received: 1 July 2020 – Discussion started: 5 August 2020

Revised: 23 December 2020 – Accepted: 7 January 2021 – Published: 18 February 2021

Abstract. To advance the understanding of the interplay among clouds, convection, and circulation, and its role in climate change, the Elucidating the role of clouds–circulation coupling in climate campaign (EUREC⁴A) and Atlantic Tradewind Ocean–Atmosphere Mesoscale Interaction Campaign (ATOMIC) collected measurements in the western tropical Atlantic during January and February 2020. Upper-air radiosondes were launched regularly

(usually 4-hourly) from a network consisting of the Barbados Cloud Observatory (BCO) and four ships within 6–16° N, 51–60° W. From 8 January to 19 February, a total of 811 radiosondes measured wind, temperature, and relative humidity. In addition to the ascent, the descent was recorded for 82 % of the soundings. The soundings sampled changes in atmospheric pressure, winds, lifting condensation level, boundary layer depth, and vertical distribution of moisture associated with different ocean surface conditions, synoptic variability, and mesoscale convective organization. Raw (Level 0), quality-controlled 1 s (Level 1), and vertically gridded (Level 2) data in NetCDF format (Stephan et al., 2020) are available to the public at AERIS (<https://doi.org/10.25326/137>). The methods of data collection and post-processing for the radiosonde data set are described here.

1 Introduction

A number of scientific experiments have focused on the trade cumulus boundary layer over the tropical Atlantic Ocean. The Barbados Oceanographic Meteorological Experiment (BOMEX 1969; Kuettner and Holland, 1969), Atlantic Trade-Wind Experiment (ATEX 1969; Augstein et al., 1973), Atlantic Stratocumulus Transition Experiment (ASTEX 1992; Albrecht et al., 1995), and Rain in Shallow Cumulus Over the Ocean (RICO 2006; Rauber et al., 2007) experiment measured thermodynamic and wind profiles of the Atlantic trade regime (reviewed by Baker, 1993). With these profiles as initial and environmental conditions, models of the cumulus clouds explain their interaction with the environment (e.g., Arakawa and Schubert, 1974; Albrecht et al., 1979; Krueger, 1988; Tiedtke, 1989; Albrecht, 1993; Bretherton, 1993; Xue et al., 2008; vanZanten et al., 2011).

Arrayed networks of soundings have been used to characterize the interaction of clouds, convection, and the synoptic environment. In many examples, they have been used to diagnose tendencies of the heat, mass, and moisture budgets for the tropical atmosphere (e.g., Reed and Recker, 1971; Yanai et al., 1973; Nitta and Esbensen, 1974; Lin and Johnson, 1996; Mapes et al., 2003; Johnson and Ciesielski, 2013). These experiments in the deep tropics monitored the synoptic (100–1000 km) variations of vertical motion and moisture convergence as context for the evolution of the ensemble of convective clouds observed within their sounding networks.

These sounding arrays measure horizontal divergence, which is used to estimate mean large-scale vertical motion. In DYCOMS-II, Lenschow et al. (2007) used stacked flight circles to estimate subsidence on a fine scale relevant to marine stratocumulus clouds. Studying the variations of mesoscale (~ 100 km) organization of the shallow trade-wind cumulus clouds likewise requires fine horizontal resolution. The Next-Generation Aircraft Remote Sensing for Validation Studies (NARVAL; Stevens et al., 2016, 2019; Bony and Stevens, 2019) demonstrated that circles of dropsondes released from aircraft above the shallow clouds reliably measure a snapshot of vertical motion.

The shallow trade-wind cumulus clouds over the tropical Atlantic Ocean are also a focus of the Elucidating the role of clouds–circulation coupling in climate campaign (EUREC⁴A; Bony et al., 2017) and associated campaigns, such as the Atlantic Tradewind Ocean–Atmosphere Mesoscale Interaction Campaign (ATOMIC)¹. The experimental design of EUREC⁴A involved 85 dropsonde circles from aircraft flights combined with regular around-the-clock upper-air observations from surface-launched radiosondes. The regular sampling from surface-launched radiosondes complemented the mesoscale vertical velocity measurements from dropsonde circles by continuously measuring time–height profiles of the atmosphere, synoptic variability for an extended time period, and diurnal variability. Radiosondes sampled when research aircraft were not flying, notably at night.

This article introduces the radiosonde observations and their resulting data sets. Other measurements, including the dropsonde data, are described in the overview paper by Stevens et al. (2021) and the references therein. Between 8 January and 19 February 2020, 811 radiosondes were launched from Barbados and the northwestern tropical Atlantic Ocean east of Barbados. A focus of the campaign was on shallow cumulus clouds, their radiative effects, and their response to the large-scale environment, contributing progress toward the World Climate Research Programme’s Grand Challenge on Clouds, Circulation and Climate Sensitivity (Bony et al., 2015). Other EUREC⁴A investigations focus on air–sea interactions due to ocean mesoscale eddies, cloud microphysical processes, and the effect of shallow convection on the distribution of winds.

Radiosondes were launched from Barbados and four research vessels. The island-based launches took place at the Barbados Cloud Observatory (BCO; 13.16° N, 59.43° W), situated at Deebles Point on the windward coast of Barbados. Surface and remote sensing observations at BCO have been in operation since 1 April 2010 (Stevens et al., 2016).

Four research vessels launched radiosondes over the northwestern tropical Atlantic east of Barbados (6–16° N, 51–60° W) during EUREC⁴A: two German research vessels,

¹ Because the sounding network and EUREC⁴A comprised many projects, or component campaigns, we refer to the union of these simply as EUREC⁴A.

Maria S. Merian (hereafter *Merian*) and *Meteor*; a French research vessel, *L'Atalante* (hereafter *Atalante*); and a United States research vessel, *Ronald H. Brown* (hereafter *Brown*). The BCO and the research vessels all measured surface meteorology and deployed various other measurements for remote sensing of clouds and the atmospheric boundary layer.

In Sect. 2 we describe the measurement strategy for the coordinated EUREC⁴A radiosonde network, the data collection procedures for each platform, and the post-processing steps that were applied to create the final data set. Section 3 shows an overview and some characteristics of the data and is followed by a summary in Sect. 5. *Atalante* additionally launched a different type of sonde, which is described in the Appendix.

2 Sounding measurements

2.1 The EUREC⁴A sounding network

The number of launches per day and the dates of regular observations (Fig. 1) differ from platform to platform, reflecting availability of ships and personnel. Soundings supported specific research interests on each platform, in addition to the coordinated EUREC⁴A sounding network. We designed the radiosonde network to optimize the joint contribution of all platforms to the overarching goals of EUREC⁴A. Sounding platforms were usually spaced to optimally sample the scales of the synoptic circulation. *Meteor* remained nearly stationary at a longitude of 57° W and moved within a meridional corridor between 12.0–14.5° N to support coordinated aircraft measurements in its vicinity (Fig. 2a). *Brown* occupied a southwest–northeast transect in the direction of the climatological surface trade winds, and approximately orthogonal to *Meteor*'s sampling line. *Brown*'s transect between the BCO (13.16° N, 59.43° W) and the Northwest Tropical Atlantic Station for air–sea flux measurements buoy (NTAS) at 14.82° N, 51.02° W (Fig. 2b) sampled air masses upwind of the BCO that move westward with the climatological easterly trade winds within 12.5–14.5° N. This elongated region between BCO and NTAS is referred to as the “Trade-wind Alley”. *Merian* and *Atalante* ventured southward to a minimum latitude of ~6.5° N to observe oceanic and atmospheric variability associated with Brazil Current ring eddies as they tracked northwestwardly along the corridor referred to as the “Boulevard des Tourbillons”. *Atalante* and *Merian* thus often form the southern points of the radiosonde network (Fig. 2c, d).

Aircraft operations included a circular flight pattern of 180–200 km diameter centered at ~13.3° N, –57.7° E (Fig. 2c). Dropsondes were deployed along the circle to estimate the area-averaged mass divergence, as described in Bony and Stevens (2019). To sample larger scales than represented by this circle, we aimed at 4-hourly soundings from all five stations while platforms were separated by more than 200 km. The launch frequency was reduced when such a sep-

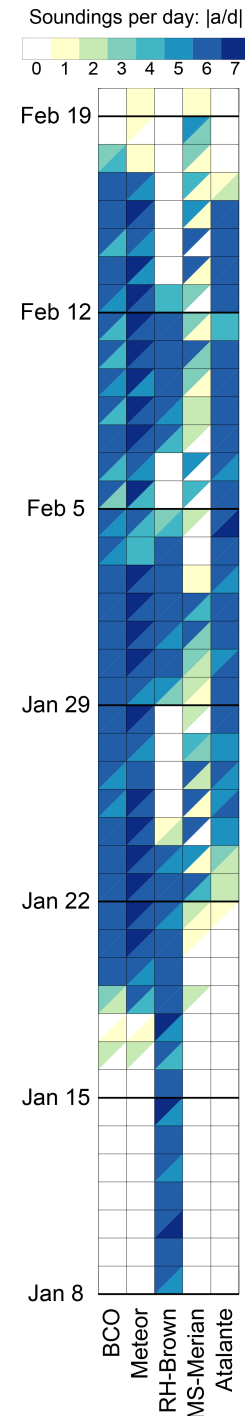


Figure 1. Daily number of ascending (upper left triangles) and descending (lower right triangles) soundings associated with each platform.

aration could not be maintained or when vessels left the key region of the network, i.e., moved south of 12° N. These scenarios occurred from time to time in order to support other measurements. Figure 4 shows that the network sampled large scales for 30 consecutive days.

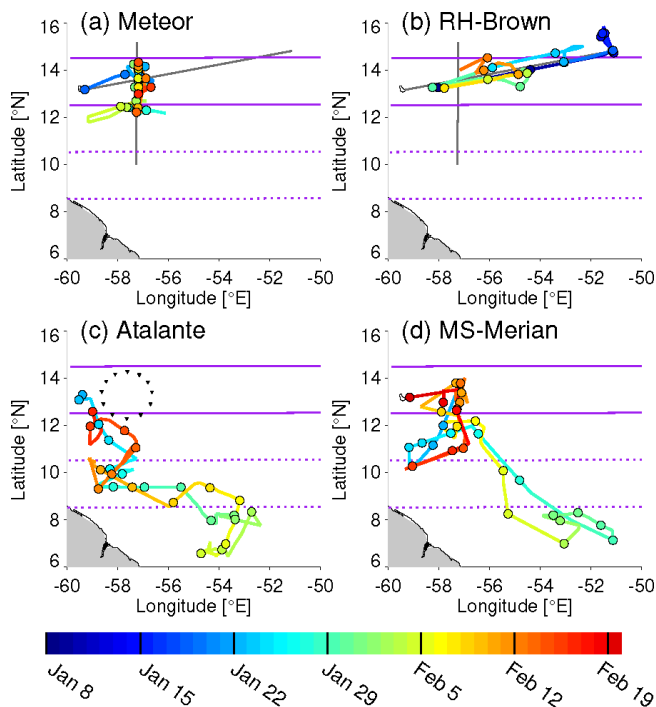


Figure 2. Routes and launch coordinates of radiosondes for the four research vessels colored by date. Circles mark the locations of the first radiosonde launch on each day. The gray lines in panels (a) and (b) mark the nearly orthogonal lines that were sampled by *Meteor* (north–south) and *Brown* (west–east). Purple lines mark the northern (12.5–14.5° N; solid) and southern (8.5–10.5° N; dashed) latitude bands that we later use to define a north (Trade-wind Alley) and south (Boulevard des Tourbillons) domain. Downward-pointing black triangles in panel (c) mark the locations of dropsonde releases during regular circular aircraft flights.

To increase the number of vertical profiles, we recorded the ascent as well as the descent of the radiosondes. For descending soundings the raw data near the surface are missing as the signal is lost due to Earth’s curvature at 300–800 m above mean sea level. The median of the lowest descent measurement is 340 m. Except for *Brown*, balloons were equipped with parachutes, which nearly match fall speeds in the middle and lower troposphere to balloon ascent speeds. Given that a typical ascent takes about 90 min, a radiosonde was sampling the air somewhere close to each platform nearly continuously during regular operation. The horizontal drift of the sondes is shown in Fig. 3 for the example of the BCO. All platforms deployed Vaisala RS41-SGP radiosondes – which measure wind, temperature, relative humidity, and pressure – and used Vaisala MW41 ground station software to record and process the sounding data. The software versions of the MW41 system are given in Table 1 for each platform. Basic algorithms and data processing did not change between these versions. Vaisala sondes were attached to 200 g balloons (BCO, *Atalante*, *Merian*, *Meteor*) or 150 g balloons (*Brown*). When present, the balloons were

equipped with internal parachutes (see Table 1 for the use of parachutes). A modification took place on *Atalante*, where after 08:00 UTC on 8 February 350 g balloons with external parachutes were used instead.

To start a sounding, a radiosonde sensor was placed on the ground station for an automated ground check initialization procedure, which took about 5–6 min. The frequency at which the radiosonde transmits its signal to the receiver was set manually to a designated value for each platform (listed in Table 1) to avoid radio interference.

The default launch times were 02:45, 06:45, 10:45, 14:45, 18:45, and 22:45 UTC. This schedule was selected to include two launches per day that were timed to match the 00:00 and 12:00 UTC synoptic times. In practice the soundings reached 100 hPa on average in 60 min and burst after 90 min. Departures from this schedule occurred for a variety of reasons, including defective radiosondes, balloon bursts before the launch, collisions of ascending radiosondes with other on-board instrumentation, and air traffic safety. In the following section, we describe specific issues and aspects of the launch procedure and equipment particular to each platform. All stations followed best practices for different equipment, which were established by several experienced teams at in-person sounding orientations prior to the campaign. For instance, every platform used a different empirical way of gauging the fill amount of gas to arrive at desired ascent rates. Equipment and procedures differed between the platforms, but this does not introduce systematic biases to Level 2 data, as these data only start at 40 m height (see Sect. 2.3.2), where measurements are independent of the surface procedures.

2.1.1 Barbados Cloud Observatory (BCO)

The BCO is located at the easternmost point of Barbados (13.16° N, 59.43° W) and thus directly exposed to easterly trade winds from the ocean (Fig. 3). The BCO launched 182 sondes, of which 162 measured descents. Radiosondes were prepared inside an air-conditioned office container with air temperature and relative humidity adjusted to 20 °C and 60 %, respectively. Balloons were prepared outside and placed into a launcher whose size provided rough guidance for achieving the desired filling level (Fig. 5a). Launches were coordinated with Barbados Air Traffic Control, which sometimes delayed soundings by up to 15 min. Surface conditions obtained from the weather station observations at the BCO were entered into the software after automatic release detection.

2.1.2 R/V *Meteor*

Meteor launched 203 sondes and collected data for 167 descents during the EUREC⁴A core period (8 January to 19 February). Eight additional ascents and descents were recorded after 20 February. Radiosondes were prepared inside a laboratory on the top deck of the ship with the antenna

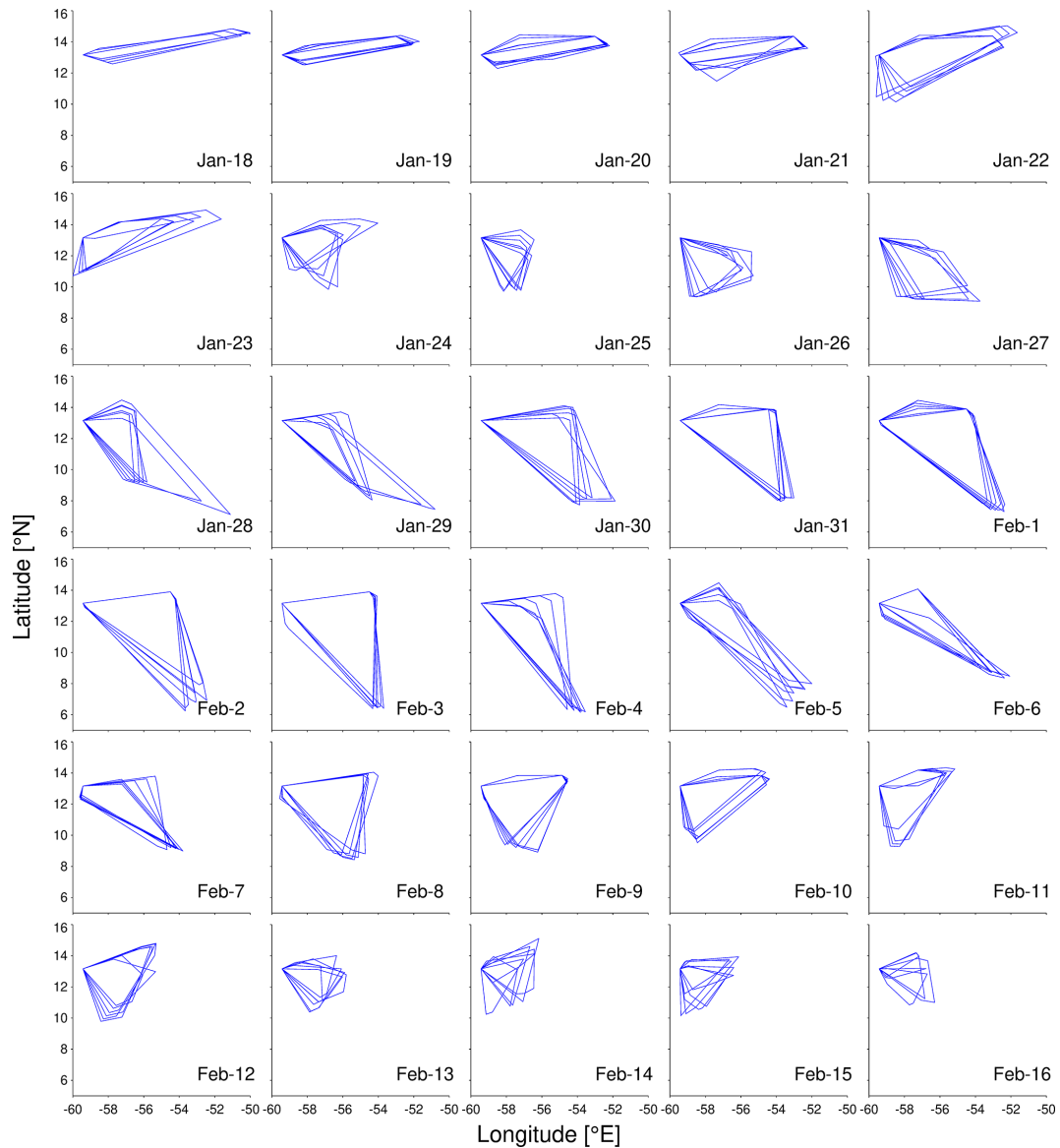


Figure 3. For each day between 18 January and 16 February, 4-hourly polygons mark the outer bounds of the radiosonde network. Polygon vertices correspond to starting locations of either ascending or descending soundings that occurred within ± 2 h of a fixed time.

placed on the roof. Before 9 February the soundings were launched from the container of the German Weather Service (DWD) on the port side at the stern of the ship (Fig. 5b). This container had a marker to indicate the optimum fill level of the balloons.

On 9 February the DWD launcher broke, and a launcher of the type shown in Fig. 5a was used, located at the stern of the ship. An awning over the balloon indicated the fill level. Ground data were obtained from onboard instruments of the DWD. In addition to sondes launched by the EUREC⁴A science crew, the DWD launched one radiosonde per day. The 31 ascending DWD sondes launched during the EUREC⁴A core period, plus an additional eight after 20 February, are

included in the Level 1 and Level 2 data sets, described in Sect. 2.3.

By mistake, the heights of the pressure sensor, the GPS antenna, and the launching altitude were incorrectly entered at the beginning of the cruise. In addition, we noticed large delays between the time at which surface measurements were entered and the launch. Therefore, we reprocessed the raw data using the MW41 software, after correcting the sensor heights and surface data in the raw files. This post-processing is lossless, and the reprocessed data have the same quality standard as the data from the other platforms. We included both the original and reprocessed Level 0 data in the data set.

Table 1. For each platform the rows list (1) the numbers of recorded ascending soundings, (2) the numbers of recorded descending soundings, (3) the first date of data coverage, (4) the last date of data coverage, (5) whether or not parachutes were used, (6) the station altitude relative to sea level (for ships: apparent sea level, for BCO: mean sea level), (7) the GPS antenna offset relative to the station, (8) the launch site offset relative to the station, (9) the surface barometer offset relative to the station, (10) the frequency used to transmit the signal from the radiosonde to the antenna, (11) the MW41 software version (12) the WMO station ID, (13,14) the abbreviated heading used for exchange on the Global Telecommunication System, consisting of (13) data designators (TTAAii) and (14) international four-letter location indicators (CCCC) (WMO, 2009).

	BCO	<i>Meteor</i>		<i>Brown</i>	<i>Atalante</i>	<i>Merian</i>
		MPI-M	DWD			
Number of ascents	182	180 ^a	39 ^a	169	139	118
Number of descents	162	175 ^a	–	158	138	38
Start date	16 Jan	16 Jan	18 Jan	8 Jan	21 Jan	18 Jan
End date	17 Feb	1 Mar	26 Feb	12 Feb	16 Feb	19 Feb
Use of parachutes	yes	yes	no	no	yes	yes
Station altitude (m)	25.0	16.9	5.4	4.3	13.1	10.4
GPS antenna offset (m)	4.3	2.5	3	5.5	2.6	1.6
Launch site offset (m)	0.0	–11.5, –14.2 ^b	0.0, –2.7 ^b	0.5	–0.6	0.0
Surface barometer offset (m)	1.0	–16.9	–5.4	–4.3	0.2	0.6
Frequency (MHz)	400.2	401.5	403.0	400.5	400.7–401.2	402.0
MW41 software version	2.15.2.0–37	2.15.2.0–37	2.6.1.60	2.4.0.75	2.15.2.2–42	2.15.2.0–37
Station IDs	BCO	ZVQEQCM		WTEC	Atalante	FPUW5GN
TTAAii	IUSN74	IUSX40, IUKX40		IUSE01	IUSN72	IUSX40, IUKX40
CCCC	LFPW	EDZW		WTEC	LFPW	EDZW

^a Includes eight additional soundings after 20 February at 00:00 UTC. ^b 9 February at 18:00 UTC–20 February at 00:00 UTC.

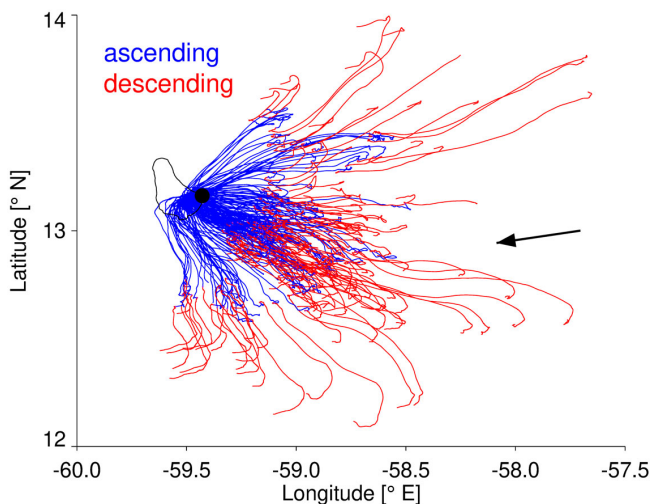


Figure 4. The horizontal trajectories of ascending and descending radiosondes launched from the BCO. The location of the BCO on Barbados is marked by the thick black dot. The black arrow is the mean wind direction at 500 m as measurement by ascending soundings launched from the BCO.

2.1.3 R/V *Ronald H. Brown* (*Brown*)

Brown released 169 sondes and collected data for 158 descents. The radiosondes were initialized and ground-checked inside an air-conditioned laboratory. Near-surface measurements were recorded from the ship's meteorological sensors via the ship computer system display. The ground station antenna was located on the aft 02 deck railing above the staging bay. Initialized radiosonde sensor packages were placed for 1–5 min on the main deck to equilibrate to ambient environmental conditions and check GPS reception and telemetry. The balloons were filled by hand in the staging bay (Fig. 5d), which was mostly sheltered. Operators avoided unnecessary contact with the balloon body but restrained it by hand if the wind was strong.

On leg 1 (8–24 January) at night, less helium was used to reduce the buoyancy of the balloons in order to achieve lower ascent rates and better resolve the fine-scale vertical structure of the atmosphere. The ascent rate for day launches was $4.4 \pm 0.5 \text{ m s}^{-1}$. Ascent was about 12 % slower for night launches ($3.9 \pm 0.6 \text{ m s}^{-1}$). To avoid the potential for biasing analyses of the diurnal cycle with systematic diurnal differences in ascent rates, after 24 January the same target ascent rate was used for day and night. Operators obtained consistent balloon volumes by timing the filling.

Balloons were launched from a location on the deck to minimize the effect of the ship and obstructions on the sound-

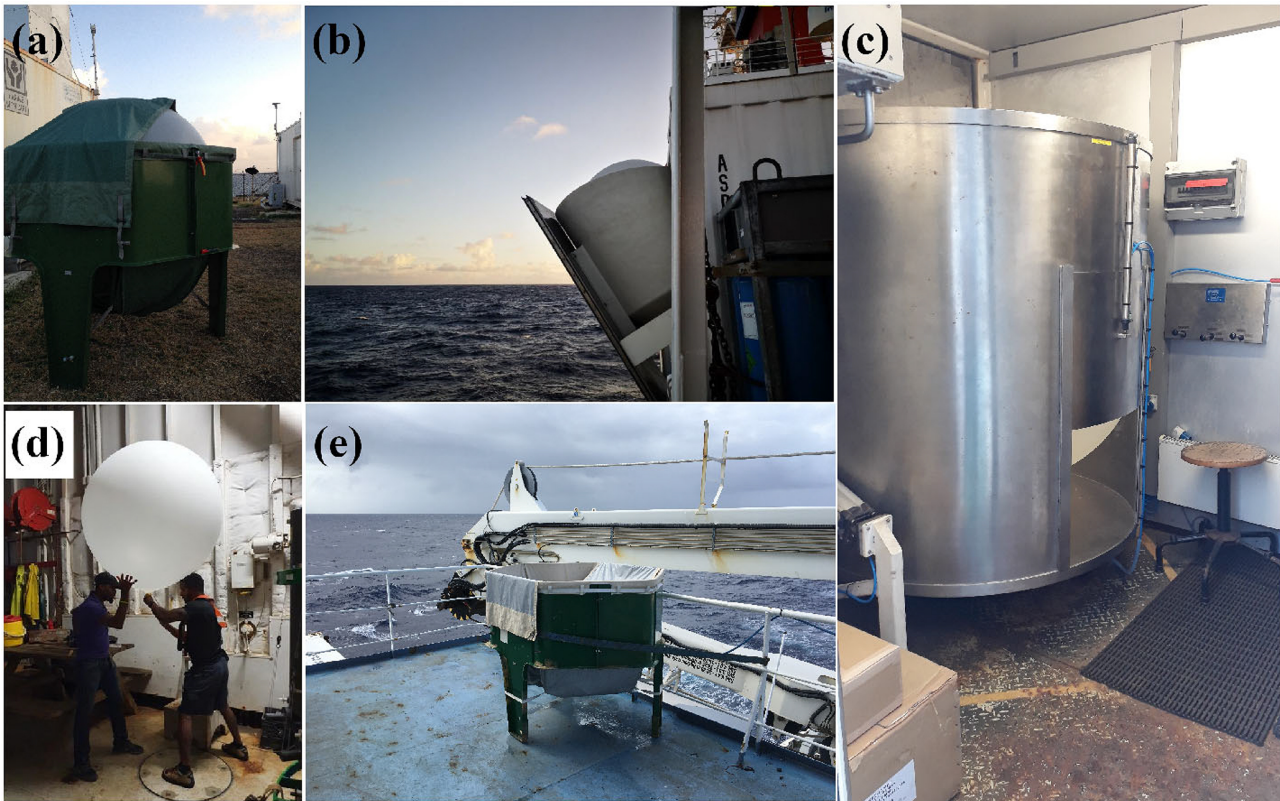


Figure 5. Photographs of the (a) launcher with balloon at the BCO, (b) DWD launcher with balloon on board *Meteor*, (c) launch container with balloon on board *Merian*, (d) manual balloon filling procedure on board *Brown*, and (e) empty launcher on board *Atalante*.

ing. The ship usually turned or slowed to improve the relative wind for the sounding. The relative wind carried the sounding away from the ship, but the ship's aerodynamic wake made the first ~ 5 s of the balloon's flight unpredictable. The sounding was sometimes launched up to 10 min earlier or later to accommodate other ship operations.

2.1.4 R/V *L'Atalante* (*Atalante*)

Atalante launched 139 Vaisala sondes and measured 138 descents. A coordinated sounding phase was performed with *Merian* to increase the temporal resolution from 30 January at 20:45 UTC to 2 February at 16:45 UTC around $52\text{--}54^\circ$ W and $6\text{--}8^\circ$ N. During this period launching times were shifted by 2 h aboard *Atalante* (00:45, 04:45, 08:45, 12:45, 16:45, 20:45 UTC), while *Merian* launched at regular times. In addition to the Vaisala soundings, 47 sondes of Meteomodem type M10 attached to 150 g balloons without parachutes were launched from *Atalante* to measure the lower atmosphere across mesoscale sea surface temperature (SST) fronts, as detailed in the Appendix.

The radiosondes were prepared aft of the bridge. This open space was right next to the top building of the ship, which may have affected measurements at low levels. Before launching, operators asked the bridge for direction change

if necessary and possible. The balloons were launched by hand from the rear deck of the bridge, where the launcher was situated (Fig. 5e). The Vaisala antenna was installed on the roof top. Surface measurements were obtained from local measurements on board. At the beginning of the campaign a frequency of 401.0 MHz was selected, which later on had to be switched to 401.2 MHz because of radio interference at 400.9 MHz from an unknown source. This interference caused loss of signal for two radiosondes during their ascent. When a previous sounding was not terminated at the launch time of a subsequent sounding, a frequency of 400.7 MHz was selected.

Atalante experienced substantial instabilities of the Vaisala acquisition system at the initialization step of the system (system location unavailable) and with the reception of the GPS signal by the Vaisala antenna and radiosondes. These problems required multiple restarts of the software and the acquisition system (between one and eight times), creating delays between 10 min and 1 h. However, they did not affect the quality of the soundings. The operators checked the cables and replaced the GPS antenna of the Vaisala system with an antenna that had a larger DC voltage range (15 instead of 4 V). Nevertheless, the problems persisted during the cruise with the need to restart the system several times before each launch.

2.1.5 R/V *Maria S. Merian* (*Merian*)

Merian launched 118 sondes and recorded 38 descents. Fewer sondes were launched on *Merian* than other platforms (Fig. 1) due to difficulties and priority of *Atalante* sondes when the ships were close to one another. The radio signal was often lost using the first antenna location, which the team suspected was due to blocking by the chimney. A new location improved the reception of the signal.

Merian was equipped with a launch container (Fig. 5c). The helium fill level was decided by inflating the balloon until it reached the upper edge of the launch container. During the day, temperatures in the container rose considerably higher than ambient, but the container was well ventilated as the launch was prepared, such that the instruments experienced typical temperatures of 28–31 °C during synchronization, with only few exceptions. Nonetheless, the residual warming could be a source of bias relative to the surface meteorology observations and persist for tens of meters after the launch. Near-surface data were taken from ship measurements.

2.2 Real-time sounding data distribution

Sounding observations distributed in real time over the Global Telecommunication System (GTS) improve atmospheric analyses for initializing and verifying weather forecasts, and they improve subsequent reanalyses. Therefore, we aimed to disseminate as many of the full 1 s resolution radiosonde data from the EUREC⁴A campaign as possible over the GTS, regardless of the launch time. Radiosonde data (ascent and descent) from *Atalante* (114 reports during the campaign) and the BCO (60 reports in February) were sent to the GTS through a Météo-France entry point. This allowed their assimilation in numerical weather prediction (NWP) systems. Most of the *Brown* data were sent to the US National Centers for Environmental Prediction. From here they were ingested into US National Weather Service and Navy NWP systems, yet not European ones. None of the data from *Merian* and *Meteor* could be transmitted to the GTS by satellite internet. However, during EUREC⁴A, 29 daily ascent soundings from *Meteor* were sent to the GTS via the EUMETNET Automated Shipboard Aerological Program, at around 16:30 UTC. The World Meteorological Organization (WMO) station identifiers and designators for tracking the data within the GTS are listed in Table 1 for each station.

World Meteorological Organization Binary Universal Form for the Representation of Meteorological Data (BUFR) data were submitted to the GTS and exchanged among the platforms during the EUREC⁴A campaign.

2.3 Quality control and data formats

The Vaisala RS41 temperature and humidity measurements are highly robust and accurate, even in cloudy environments. The humidity sensor is actively heated to prevent water condensation and frost formation on the sensor surface. The Vaisala MW41 software writes proprietary .mwx binary files which are ZIP archives that contain both the raw and the processed measurements. These data make up our Level 0 data set. We also provide Level 1 and Level 2 data, which we describe in the following. Our assignment of levels for the data sets adheres to the standards laid out in Ciesielski et al. (2012).

Sometimes the launch detection did not work properly, which resulted in differences of more than 30 m between the surface altitude and the first reported sonde altitude. Such profiles were reprocessed by correcting the launch time in the raw files. The files were then processed like the corrected files from *Meteor* (see Sect. 2.1.2).

2.3.1 Level 1 data

Level 1 data in NetCDF format are quality-controlled and averaged to 1 s resolution from the Level 0 data. Because the pressure, temperature, and humidity are measured with a different sensor (PTU) than wind and position, the data are synchronized to the PTU time. This synchronization is done by the Vaisala MW41 software, and the results are included in the Level 0 archive files. The Level 1 data were processed from these results.

The Vaisala MW41 sounding system applies a radiation correction to daytime temperature measurements by subtracting increments that vary as a function of pressure and solar zenith angle. The uncertainty of the radiation correction is typically less than 0.2 °C in the troposphere; uncertainty gradually increases in the stratosphere.

The Vaisala system applies algorithms to adjust for time lags of the RS41 sensors. At 10 hPa the response time of the temperature sensor is 2.5 s for an ascent speed of 6 m s⁻¹. At 18 km (75 hPa) with a temperature lapse rate of 0.01 °C m⁻¹ and an ascent rate varying from 3 to 9 m s⁻¹, the remaining uncertainty in the temperature reading due to time lag is 0.02 °C. At lower altitudes the uncertainty is even smaller. A time-lag correction is also applied to measurements of humidity. The response time of the humidity sensor is dependent on the ambient temperature. For example, at an ascent rate of 6 m s⁻¹ and at 1000 hPa it is < 0.3 s for +20 °C and < 10 s for -40 °C. The remaining combined uncertainty during the sounding is 4 % relative humidity.

After time-lag adjustments, the Vaisala MW41 quality control algorithm detects outliers and smooths the data to reduce noise. Periods of super-adiabatic cooling are interpolated, and this also applies to temperature differences right above the surface. The MW41 software applies the same correction and quality control steps to the descending and

ascending phases of a sounding. Descending sondes, however, can be subject to uncontrollable factors. For example, a falling device may be affected by the remaining debris of a balloon. For this reason, Vaisala does not guarantee the same abovementioned error margins for data from descending soundings. Our software (Schulz, 2020) reads the processed Vaisala .mwx and Meteomodem .cor files and converts them to self-describing NetCDF files. We also add the ascent or descent rate, calculated from the geopotential height and time information between consecutive measurements, to the NetCDF files. The resolution of the measurements is 1 s. The resulting NetCDF files are the Level 1 data set distributed here.

2.3.2 Level 2 data

To facilitate scientific analyses, Level 2 data are provided on a common altitude grid with bin sizes of 10 m, by averaging the Level 1 data. Mean temperature, wind components, position, and logarithm of pressure are directly averaged within height-centered bins. Relative humidity is calculated from the mean of the Level 1 water vapor mixing ratio, calculated from the water vapor pressure formula of Hardy (1998), which is also used by the Atmospheric Sounding Processing Environment (ASPEN) software (Suhr and Martin, 2020) for EUREC⁴A dropsonde measurements. Surface-launched soundings were not reprocessed with ASPEN, as the ASPEN manual warns against duplicating quality control procedures applied by the Vaisala MW41.

In the case of missing data within a sounding, we linearly interpolate gaps of up to 50 m. Gaps larger than 50 m, as well as data below 40 m in our Level 2 data set originating from the ship soundings, are filled with missing values. Discarding the lowest 40 m avoids potential biases in the soundings associated with local ship effects, like heating or exhaust plumes, and other problems that are discussed by, for example, Harten et al. (2018). Yoneyama et al. (2002) found ship influences on radiosonde measurements to extend no further than 40 m above the deck.

3 Data characteristics

3.1 Ascending versus descending soundings

We begin with an examination of instrument ascent and descent speeds for the different platforms (Fig. 6). The figure is based on the ascent (or descent) rates with a 10 m vertical resolution included in the Level 2 data. The median ascent speed in the mid-to-upper troposphere is between 4.5 and 5 m s⁻¹ for radiosondes launched from the BCO, *Atalante*, and *Merian* (Fig. 6a, g, i). Radiosondes launched from *Meteor* and *Brown* ascended at slightly slower rates of about 4 m s⁻¹ (Fig. 6c, e). For all platforms and at all altitudes the 10th and 90th percentiles are roughly symmetric about the median ascent rate and fall mostly within ± 1 m s⁻¹ of the

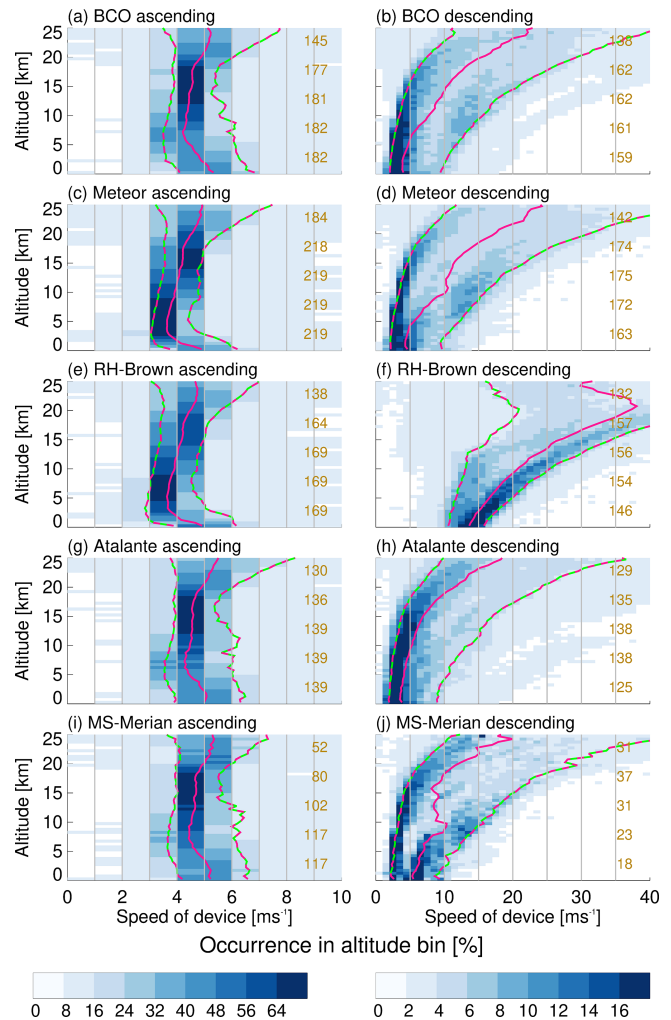


Figure 6. Instrument (left) ascent and (right) descent speeds as a function of height. The sum of occurrence frequencies in each altitude bin is 100 %. The pink line shows the median profiles, and the pink-green lines show the 10th and the 90th percentiles. Altitude bins are 500 m deep, and speed bins are 1 m s⁻¹ wide. The numbers of radiosondes that crossed the corresponding height levels (2.5, 7.5, 12.5, 17.5, and 22.5 km) are shown in each panel.

median. Radiosondes from *Atalante* and *Merian* appear to have experienced stronger updrafts in the upper troposphere. This is consistent with sampling the more convectively active conditions in the south, where there is a warmer ocean surface, more precipitable water, deeper convection, and a greater chance of land influences. Above 20 km, the median ascent rate and the spread in ascent rates increase for all platforms.

Descent speeds exhibit a much stronger functional dependence on altitude (Fig. 6b, d, f, h, j). For platforms that employed parachutes (BCO, *Meteor*, *Atalante*, and *Merian*), descent rates decrease towards the ground to a minimum of about 5 m s⁻¹ in the lowest kilometers. Instruments without a parachute from *Brown* have descent rates of slightly less than

15 m s⁻¹ in the lowest few kilometers. The positive skewness of the distributions associated with stations that used parachutes is due to descending radiosondes with broken or detached parachutes, or with unexpected behavior of the torn balloon remains. With the exponential decrease of air density with altitude, descent rates increase non-linearly and rapidly with altitude, exceeding 20 m s⁻¹ between 20–25 km when parachutes were used and exceeding 40 m s⁻¹ in the case of *Brown*.

Despite corrections and quality control steps applied by MW41, measurements taken during descent may be accompanied by larger uncertainties due to less favorable and more variable measurement conditions. To establish what degree of confidence we may attribute to the descent data, Fig. 7 compares the measurements of horizontal wind speed, air temperature, and relative humidity between ascending and descending soundings. We do not expect perfect agreement between ascending and descending soundings, for several reasons. First, the instruments drift substantial horizontal distances and hence systematically sample a downwind location (as illustrated in Fig. 3 for the BCO). Meridional horizontal drift could create systematic biases. Second, there are variable time lags on the order of a couple of hours between ascending and descending measurements, which we expect might increase the scatter between ascent and descent measurements but not create systematic differences. A systematically different response of the sensors during descent might be the most important factor for biases. We also note that the number of descent profiles available for computing statistics is in some cases substantially smaller than the number of ascent profiles (Fig. 1). The numbers of available measurements are again listed on the left-hand side of Fig. 7. All quantities shown in Fig. 7 are computed from matched ascent–descent pairs of the same instrument.

Measurements of horizontal wind speeds do not show statistically significant differences between ascent and descent (the mean lies within the 95 % confidence intervals), with the exception of *Brown*. Here, wind speeds at around 20 km altitude are stronger for the ascent. This systematic difference could be related to excessively rapid descent rates. Similar results are found for measurements of air temperature (Fig. 7b, d, f, h, j). In the case of *Brown*, stratospheric temperature observations during descent are warmer by more than 1 °C, suggesting a bias due to high descent rates. The same bias exists for the other platforms, but the effect is smaller and not statistically significant at the 95 % confidence level. Differences in relative humidity are not statistically significant inside the troposphere.

3.2 Synoptic conditions

We first present the synoptic situation for the region defined by *Meteor* and the BCO soundings. Our initial analysis focuses on the soundings for these two platforms because they define a more or less fixed geographic area – radiosondes

launched from *Meteor* were almost all launched between 12.5 and 14.5° N along 57.15° W – bounding the subdomain that was most intensively sampled. A comparison between 12 BCO soundings with coincident and nearly co-located ship-based soundings (ships were positioned just offshore of the BCO) showed no evidence (Fig. A4) of a systematic influence of the island on the BCO soundings. Hence, the BCO soundings appear representative of the westernmost boundary of the marine measurement area. Focusing on a fixed region during the period of most intensive airborne operations, between 20 January and 17 February, also provides a reference for quantifying differences in soundings taken outside of this region, or time period, as is discussed at the end of this subsection.

Synoptic differences among variables believed to be important for patterns of low-level cloudiness suggest that (i) *Meteor* and the BCO sample the same synoptic environment and (ii) changes in the environment can usefully be described by week-to-week variability over the 4 weeks starting on Monday, 20 January. The lower-tropospheric stability (LTS), the near-surface winds, the lifting condensation level (LCL) of near-surface air, and the hydrolapse track each other well (Fig. 8). The hydrolapse marks the depth of the trade-wind cumulus layer. It is defined as the mean height where mean relative humidity on a centered running 500 m range first drops below 30 %. LTS is defined as the difference between potential temperature at 700 hPa and the mean potential temperature in the lowest 200 m. Figure 9 further illustrates that the LCL tracks well the lowest cloud bases as measured by the *Meteor* ceilometer. Week-to-week variations as deduced from the soundings of either platform show the first and last week to be characterized by a deeper moist layer and lessened lower-tropospheric stability, the latter primarily explained by changes in the potential temperature at 700 hPa. The 2-week period starting on 27 January has a much shallower trade-wind layer and stronger stability. Near-surface winds vary somewhat out of phase with the moisture variability, with winds stronger in the second half of the 4-week period and weaker in the first half. The LCL shows very little synoptic variability.

Cloud observations are also included in Fig. 8. Reports of mid-level (C_M) and high-level (C_H) clouds are derived from 3-hourly SYNOP observations reported by the Barbados Meteorological Service at Grantley Adams International Airport. If a reported mid- or high-level cloud type was persistent through the day (more than three reports), it is included via its WMO cloud symbol² in Fig. 8. Notable are mid-level clouds that coincide with the deepening of the marine layer, particularly during the period at the end where a layer of altocumulus ($C_M = 4$) persisted for several days (Fig. 9). Observations of low clouds (C_L) indicated that $C_L = 8$ and

²These symbols are taken from the 2017 edition (Table 14) of the WMO Cloud Atlas (<https://cloudatlas.wmo.int/en/home.html>, last access: 20 December 2020).

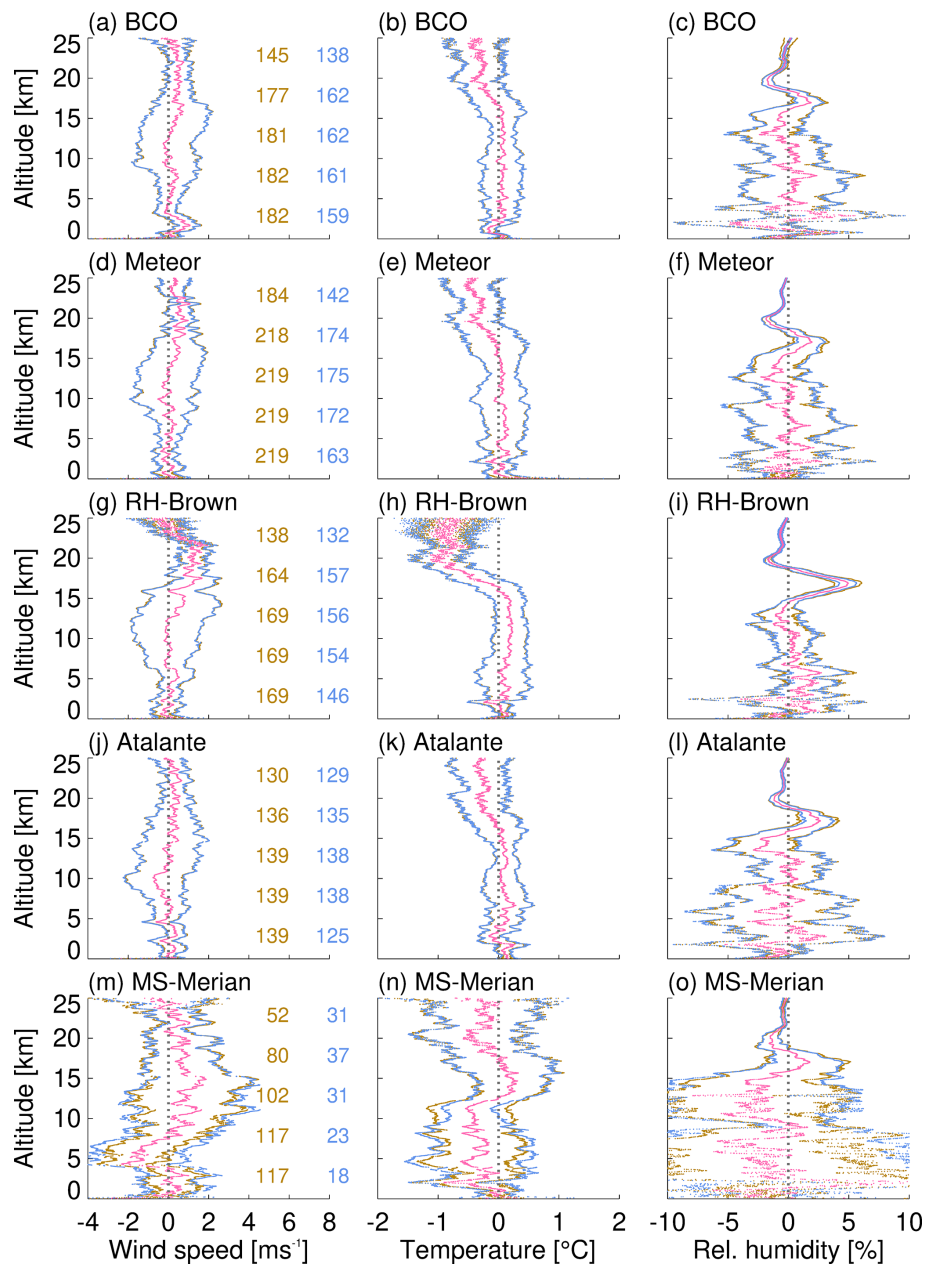


Figure 7. Comparison of (left) horizontal wind speed, (middle) air temperature, and (right) relative humidity, measured during ascent and descent. The pink dots show the average over all included ascent profiles minus the average over all included descent profiles. Brown (blue) dots show the 95 % confidence intervals for ascent (descent). Numbers inside the panels on the left-hand side show the counts of ascending (brown) and descending (blue) radiosondes that crossed the corresponding height levels (2.5, 7.5, 12.5, 17.5, and 22.5 km).

$C_L = 2$ were the dominant low-level clouds – both evident on almost every day with little evidence of synoptic variability. This is also evident from the *Meteor* ceilometer measurements (Fig. 9). For this reason, in Fig. 8 we instead identify days when particular patterns of mesoscale variability were in evidence. We adopted the four patterns sugar, gravel, flowers, and fish following Stevens et al. (2020). While the low and small sugar clouds appear with little organization, gravel clouds reach deeper extents and organize along gust

fronts. The fish-bone-like organization of clouds on horizontal scales of 200–2000 km is described by the fish pattern, and large stratiform, often circular-shaped cloud clumps are labeled as flowers. Whether or not one particular pattern was identified was determined through a cloud classification activity organized by one of the authors (Hauke Schulz). These patterns suggest that the initial moist period has the satellite presentation of fish and that the period of increased lower-tropospheric stability and strengthening winds on 2 Febru-

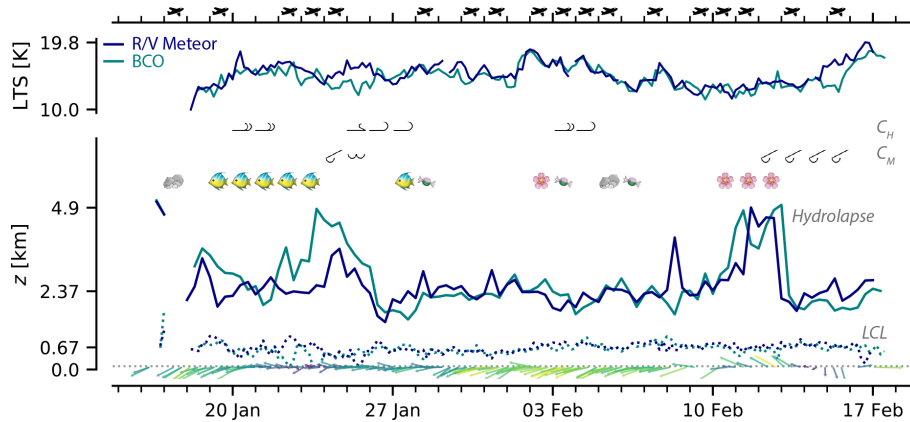


Figure 8. Synoptic overview of period and region of intensive aircraft measurements. Plotted are the lower-tropospheric stability (LTS), the height of the hydrolapse, the lifting condensation level (LCL), and the wind vector averaged over the lower 200 m. Winds are 12 h median values; other quantities are resampled at a 4 h interval, with median values plotted, except for the LCL, where minimum values are plotted. For the wind vectors the maximum and minimum wind speeds are 12.3 and 2.0 m s^{-1} , respectively. Tick marks denote maximum and minimum LTS, maximum and median height of *Meteor* hydrolapse, and mean height of the LCL (*Meteor*). Also shown are days when aircraft with dropsondes were flying, and the synoptic cloud observations of mid-level (C_M) and high (C_H) clouds with the associated WMO cloud symbol (Table 14 of 2017 World Meteorological Organization Cloud Atlas, <https://cloudatlas.wmo.int/en/home.html>, last access: 20 December 2020) that predominated for that day. Cloud types are taken from the Barbados Meteorological Service SYNOP reports. Days on which a mesoscale pattern of shallow convection, following the classification activity of Schulz et al. (2021), was readily identified are indicated by the emojis for fish, sugar (candy), flowers, or gravel (rocks).

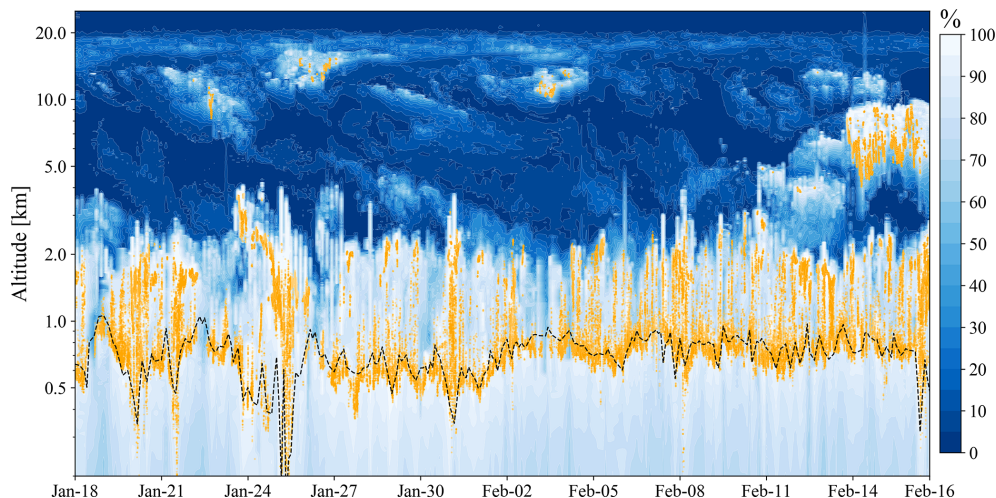


Figure 9. Comparison between ascending and descending soundings and ceilometer measurements on *Meteor*. The relative humidity from radiosonde measurements is shown in blue-to-white shading. The dashed black line represents the lifting condensation level calculated based on Bolton (1980). Cloud base heights as observed by the ceilometer are marked with orange dots. The vertical axis is chosen to be logarithmic for better visibility of the moisture distribution near the surface. The time axis for the soundings uses launch time. The temporal resolution of the ceilometer data is 10 s. Low-altitude relative humidity profiles (300–800 m) of the descending soundings were recovered by assuming a dry adiabat temperature and a constant humidity profile.

ary is associated with the pattern flowers, consistent with the analysis of Bony et al. (2020).

To give a better impression of the synoptic variability, the period identified with the fish pattern, between 22–24 January, is investigated further. The visible satellite imagery from the Moderate Resolution Imaging Spectroradiometer (MODIS) on Aqua (Fig. 10a) illustrates the large-scale char-

acteristics of the observed fish cloud pattern, covering the BCO and the northern latitudes of the observations region. The pattern resembles a spine in a surrounding cloud-free area and was accompanied by unseasonably large amounts of surface precipitation. Figure 10b illustrates the moistening of the atmosphere and the deepening of the boundary layer, as measured at the BCO, over the course of this event. Be-

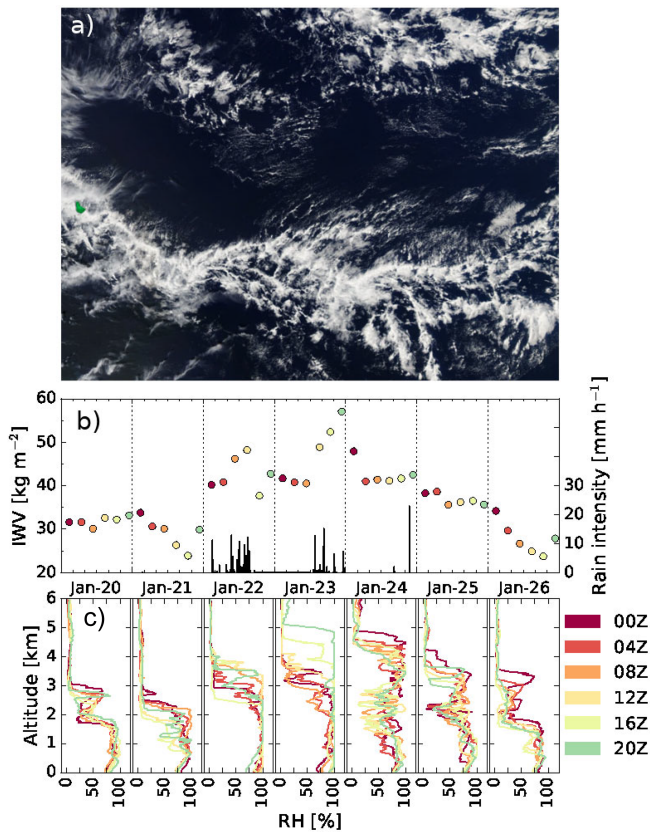


Figure 10. Fish cloud pattern passing Barbados between 22–24 January 2020. **(a)** MODIS-Aqua scene from 22 January. The image covers 9–18° N, 48–60° W, with Barbados shown in artificial green. **(c)** Temporal evolution of relative humidity **(b)** and integrated water vapor (IWV; color-coded) as measured by the BCO soundings on 20–26 January. Profiles and calculated IWV values are color-coded according to the nearest hour of the sounding reaching 100 hPa. Panel **(b)** also shows a 1-minute running mean of rain intensity recorded at BCO (black).

tween 20–26 January, the increase of integrated moisture up to 55 kg m^{-2} coincides well with the deepening moist layer and thus also with changes in cloud top height and trade-wind inversion height. Before and after the event, the inversion layer height was around 2 km (Fig. 8), and the boundary layer was characterized by a mixture of gravel and sugar, albeit the latter not on a scale that lent itself to identification from the satellite imagery. During the peak of the event on 22 and 23 January, the moisture layer deepened up to 5 km. While the fish cloud pattern passed over BCO, the pressure in the boundary layer decreased by up to 4 hPa (see Fig. 11e) and the temperature in the upper middle troposphere (6–8 km) showed a slight positive anomaly (see Fig. 11a). The rain intensity, measured at BCO with a Vaisala WXT-520 ground station, peaked at 15 mm h^{-1} , and precipitation events were persistent, in contrast to the short rain showers more typical of the dry season (Stevens et al., 2016). Bony et al. (2020)

found that the fish cloud pattern often occurs under weaker surface trade-wind speeds below 8 m s^{-1} ; the sounding data confirm this, as the measured wind speeds lie well below this threshold in the lower boundary layer (e.g., Fig. 8).

Given that the vertical structure of the humidity field appears to be a strong indicator of synoptic variability, time-height humidity plots for all of the platforms are used to explore the coherence of synoptic conditions sampled by individual platforms. This analysis (Fig. 12) shows that soundings from *Brown*, which moved around more but stayed mostly north of 12.5° N and east of *Meteor*, sampled a similar synoptic environment. *Merian* and *Atalante*, however, were further south, and their soundings show a humidity structure and evolution that is less coherent than seen by the ships in the Trade-wind Alley. Based on this finding and because performing the same analysis for any one station does not change the big picture, we composite the soundings from all of the platforms north of 12.5° N. Figure 11 shows the temporal evolution of atmospheric conditions for the full period of data coverage averaged north of 12.5° N, i.e., over the Trade-wind Alley. Before 22 January the mid-troposphere is relatively cool and zonal winds in the upper troposphere are strong. From 22 January onward the observational domain experienced warmer temperatures, weaker upper-tropospheric westerlies, and weaker easterlies near the surface. Positive pressure anomalies first appear in the upper troposphere and reach the surface at the end of January, when a ridge starts to dominate the area. Surface and upper-tropospheric winds strengthen again after 6 February, when the positive pressure anomaly fades. A strong moistening of the mid- and upper levels is seen around 13 February, which coincides with a directional change of the meridional winds at these levels, favoring the aforementioned extensive and persistent altocumulus cloud layer (Fig. 8).

Most differences between the structure of the atmosphere within the Trade-wind Alley (North of 12.5° N) and the Boulevard des Tourbillons (southern corridor) are confined to the structure of the lower-tropospheric humidity. South of 12.5° N, the atmosphere was on average much more humid in the lower and middle troposphere, as shown in Fig. 13. This humidity anomaly is not persistent, as dry conditions, similar to those observed north of 12.5° N, were also present; it can rather be associated with more frequent periods of a deep moist layer and deeper convection, for example as observed during the period around 29 January (see Fig. 12). Additional, albeit less substantial, differences (not shown) are that middle–upper-tropospheric relative humidities (between 7–10 km) are actually somewhat drier in the south. There is very little evidence of systematic differences in the temperature structure between the northern and southern soundings, except for a hint of enhanced stability in the upper troposphere (11–15 km) in the north. Over the Boulevard des Tourbillons, the depth of the near-surface easterly layer is 1–2 km shallower, and between 5–15 km the westerlies have a stronger northerly component.

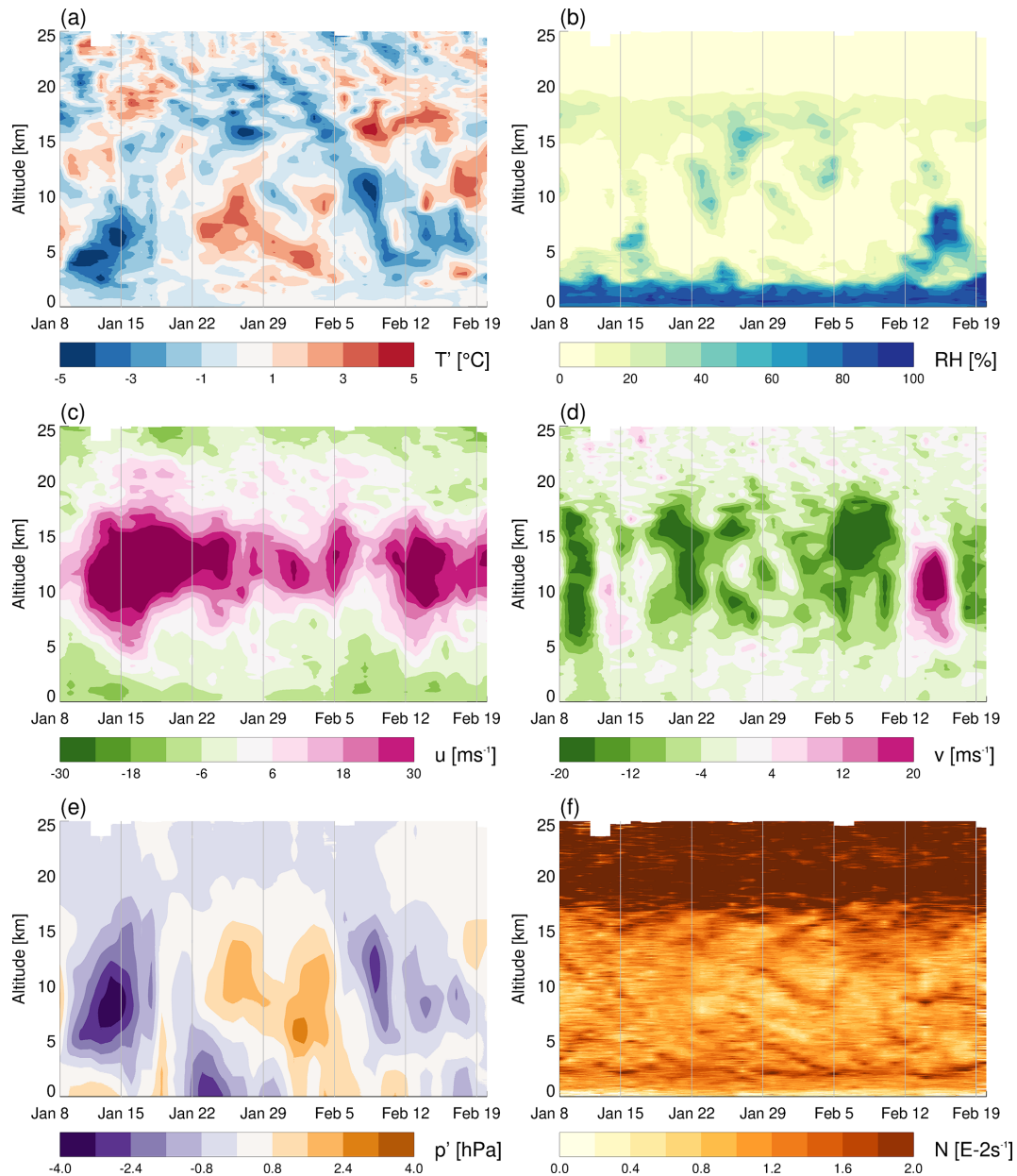


Figure 11. (a–e) Time–height cross sections of daily (a) temperature anomaly, (b) relative humidity, (c) zonal wind, (d) meridional wind, (e) pressure anomaly, and (f) Brunt–Väisälä frequency (units of 10^{-2} s^{-1}), computed from ascending soundings north of 12.5° N . The data combine 182 soundings from the BCO, 169 from *Brown*, 159 from *Meteor*, 30 from *Merian*, and 4 from *Atalante*. Anomalies are defined as deviations from the time average at each altitude.

4 Code and data availability

Raw Level 0 data consist of single files per sounding in .mwx format, which combine ascent and descent from each instrument. Quality-controlled Level 1 data consist of single files per sounding in NetCDF format, with separate files for ascent and descent. Level 2 data are stored in a single file per station and include data on a 10 m vertical resolution grid, including all available ascents and descents.

Ascent and descent can be distinguished by a flag that indicates the direction. All data (Stephan et al., 2020) are archived and freely available for public access at AERIS (<https://doi.org/10.25326/137>). Our software, which we used to convert to NetCDF format is also publicly available (Schulz, 2020; <https://doi.org/10.5281/zenodo.3712223>).

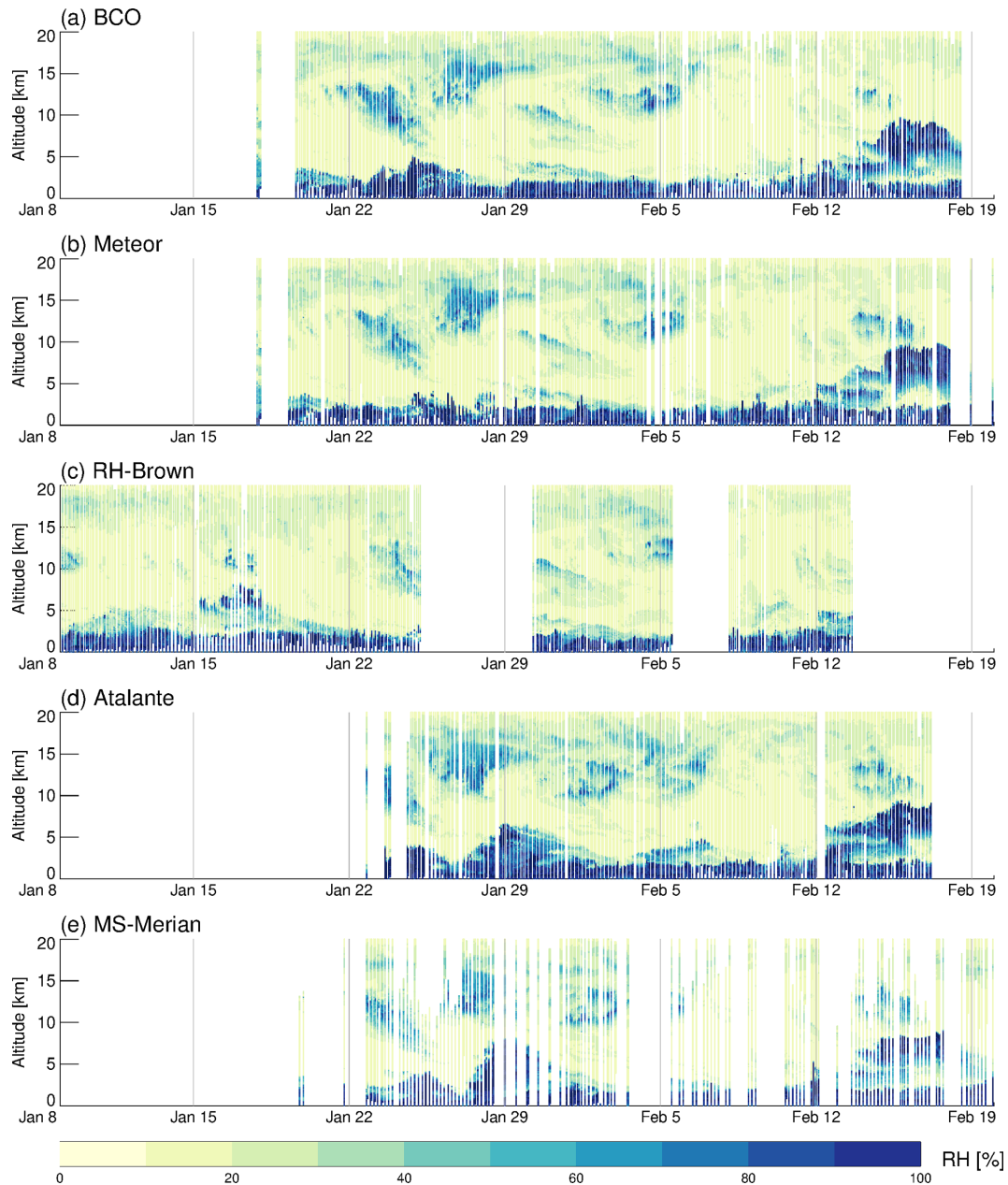


Figure 12. Time–height series of relative humidity measurements from all platforms. The plot combines ascending and descending soundings.

5 Summary

The EUREC⁴A field campaign during January–February 2020 included among its wide range of observational platforms an extensive radiosonde network, consisting of the Barbados Cloud Observatory and four research vessels. One hundred eighty-two radiosondes of type RS41-SGP were successfully launched in a regular manner between 16 January and 17 February from the BCO, 203 between 18 January and 19 February from *Meteor*, 169 between 8 January and 12 February from *Brown*, 139 between 21 January and

16 February from *Atalante*, and 118 between January 20 and 19 February from *Merian*. In addition, 47 Meteomodem radiosondes of type M10 were launched from *Atalante* during intensive observational periods to sample variability associated with sea surface temperature fronts. These are described in the Appendix.

We made data at three stages publicly available. Level 0 data contain the raw .mwx binary files, which can be read and processed with the MW41 software. Level 1 data were subject to Vaisala’s standard quality control algorithm, which

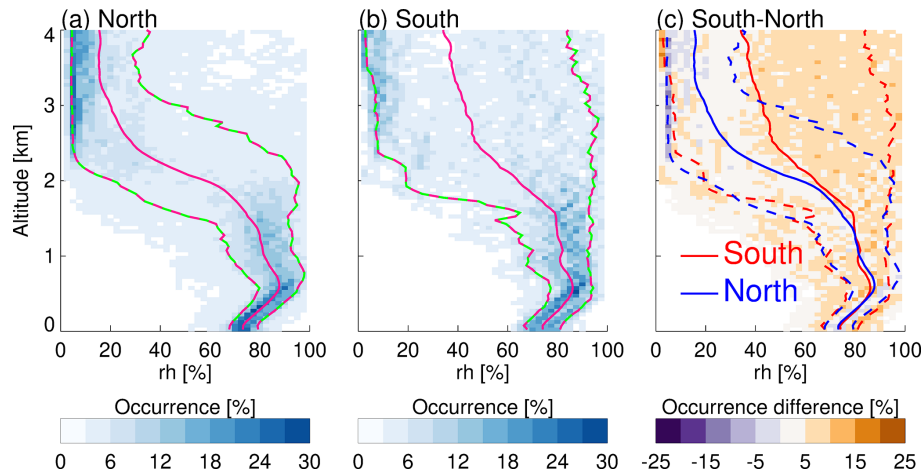


Figure 13. Occurrences of relative humidity as a function of height below 4 km for soundings launched between 26 January and 12 February. The sum of occurrence frequencies in each altitude bin is 100%. Altitude bins are 50 m deep, and each x axis contains 40 bins. North **(a)** designates soundings from the northern ($12.5\text{--}14.5^\circ\text{ N}$; 261 profiles) latitude band, and south **(b)** designates soundings from the southern ($8.5\text{--}10.5^\circ\text{ N}$; 63 profiles) latitude band. Solid lines show the mean profiles in each region, and dashed lines the 10th and the 90th percentiles. Only data from ascending radiosondes are used in this comparison. The difference between north and south is shown in panel **(c)** with the lines from panels **(a)** and **(b)** overlaid.

detects outliers in the profiles, performs a smoothing to reduce noise, and applies time-lag and radiation corrections. The Level 1 file format is NetCDF with a temporal resolution of 1 s. To facilitate scientific analyses, Level 2 data are vertically gridded by averaging Level 1 data in 10 m bins. All soundings, ascending and descending, from each platform were collected into one NetCDF file for the Level 2 data.

Meteor and *Brown* followed nearly orthogonal sampling lines, mostly in the latitude band $12.5\text{--}14.5^\circ\text{ N}$, whereas *Atalante* and *Merian* sampled conditions further to the south. It was a central goal of EUREC⁴A to better understand the formation and feedbacks of different patterns of shallow cumulus clouds. We were fortunate that nature provided us with a wide variety of cloud conditions, which are reflected in the radiosonde data. The 6 weeks of sounding data at high temporal resolution should render the radiosonde data described herein useful for a large variety of scientific analyses.

Appendix A: Extra soundings on board *Atalante*

In addition to the regular Vaisala soundings, further soundings were performed from *Atalante* primarily to sample the lower atmosphere across SST fronts associated with oceanic mesoscale dynamics. An independent radiosonde receiver was used to not interfere with the regular soundings depicted in this article. Meteomodem M10 radiosondes were chosen for availability and cost. In order to decide the period of intensive sampling using these sondes, we first identified on a daily basis the ocean mesoscale eddies and currents by applying the TOEddies detection algorithm (Laxenaire et al., 2018) to the Ssalto/Duacs near-real time (NRT) altimeter products (absolute dynamic topography and the associated surface geostrophic velocities; Ablain et al., 2017, Taburet et al., 2019).

These data were successively analyzed together with the NRT SST produced by Collecte Localisation Satellites (CLS), the ship's thermosalinograph (TSG) 5 m depth temperature measurements, and ARPEGE and ECMWF forecasts in order to decide in real time the launching strategy. The NRT CLS SST is produced as a 1 d average, high-resolution product, which is a simple data average of the satellite measurements taken over the previous day, and has a resolution of 0.02° in latitude and longitude. This product may have local gaps due to the presence of clouds or missing data. The CLS SST NRT product is derived from nighttime observations (to avoid diurnal warming of the sea surface) by MODIS on board Terra and Aqua satellites, AVHRR on board MetOp-A and MetOp-B, the VIIRS on board Suomi-NPP, AHI on board HIMAWARI-8, and ABI on board GOES-16 and GOES-17.

Precisely setting the sounding periods was difficult because the satellite observations were only available for the previous day, with additional uncertainties in the location of SST fronts due to cloud screening. Furthermore, this strategy was defined in coordination with *Merian* to take into account the oceanographic observation goals common to both ships.

The first targeted and intensive radiosonde observation leg took place on 26 January. Eleven Meteomodem sondes were launched while crossing a SST front associated with a relatively cold filament (-0.5 to -1°C SST anomaly) steered from the Guyana coast by a mesoscale anticyclonic eddy (Fig. A1a). During this leg, the ship crossed a front of about 0.5°C extending over 30 km with near-surface wind of $6\text{--}7\text{ m s}^{-1}$ magnitude and $60\text{--}70^\circ$ direction. During this leg the ship was heading eastward, almost into the wind. Figure A1a shows the 25 February SST map, chosen as clouds prevented retrievals on the following day. According to the satellite product, one would have expected to meet the front further east. Fortunately, a first diagonal transect during the night provided us with the actual front location.

The second targeted and intensive radiosonde observation leg took place on 2–3 February. This leg lasted for about 24 h, during which 28 Meteomodem radiosondes were launched

while the ship was zigzagging in order to sample several times the northeastern edge of a cool SST anomaly of nearly -1°C associated with coastal upwelling off the Suriname and French Guyana coast (Fig. A1b). During this leg, the ship was moving westward and sampled SST variations of $0.3\text{--}1^\circ\text{C}$ extending over 50–60 km. At this time the near-surface wind was variable in direction, $40\text{--}80^\circ$, and relatively strong ($8\text{--}11\text{ m s}^{-1}$).

The remaining Meteomodem radiosondes were launched on a few diverse occasions: two were launched in the center of the warm core of a second eddy on 27 January. Another radiosonde was launched under a convective system on 10 February. The last four launches took place in cloud streets on 17 February.

We used M10 GPS radiosondes with an SR10 station and EOSCAN (1.4.200306) software. With the exception of one sounding, only ascent data are available for these soundings as most of the launches were stopped manually at about 10 km height to increase the sampling frequency of the lower atmosphere in regions characterized by SST fronts. Launch frequencies reached up to one sounding every 40 min during the intensive launch periods. Therefore, several radiosondes were emitting at the same time, so frequencies had to be changed within the 400.4–403.4 MHz band to avoid interference. M10 radiosondes measure relative humidity and temperature, from which dew point temperature is deduced. The altitude and horizontal displacements of the radiosondes are measured by GPS and are used to diagnose the horizontal wind components. Unlike with RS41 SGP sondes, the pressure is deduced from the altitude and the surface station pressure measurement, using the hydrostatic approximation. Our published data formats, NetCDF and ASCII formatted files (.cor files), both contain data reported every second. The raw Meteomodem data are processed in the same way as the Vaisala soundings to create Level 1 and Level 2 files that match the format of the corresponding Vaisala data. The only difference is that the description of the Meteomodem corrections that are automatically applied by the software is a trade secret and therefore not known to us. However, the M10 sondes are currently in the process of being certified by the Global Climate Observing System Reference Upper-Air Network (GRUAN). If the GRUAN certification is granted, details on these corrections will become available. We checked for and corrected spurious data in the surface observations using handwritten log sheets filed during the campaign.

Figure A2 illustrates the outcome of these targeted and intensive radiosonde observations with results from the 2–3 February intensive observation period (Fig. A1b). Profile color (Fig. A2a–c) denotes the SST measured by the ship at the time of the launch (Fig. A2d). Blue (red) profiles are thus on the cold (warm) side of the SST front. These profiles are from raw data (Level 0), and no attempt was made to validate, correct, or remove doubtful data such as the surprisingly cold layer between 800–900 m altitude that can be seen in one of the blue potential temperature profiles (Fig. A2a).

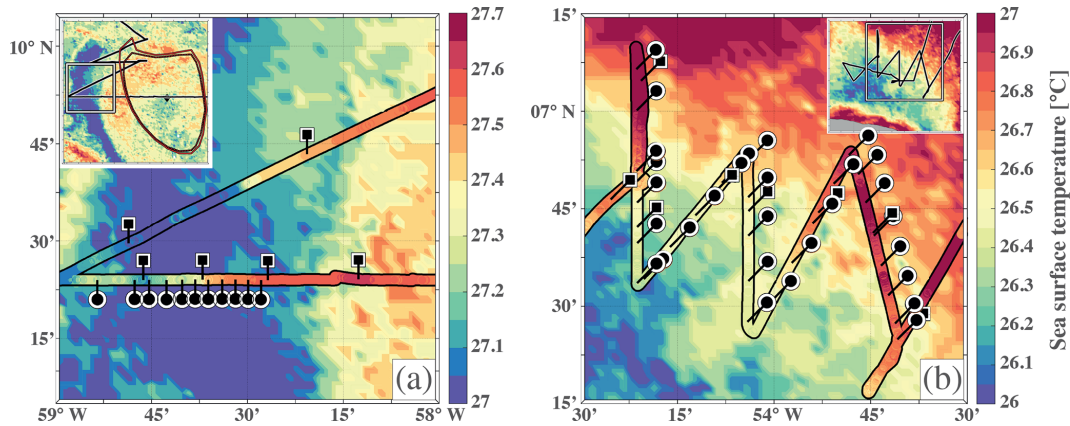


Figure A1. Maps of CLS SST ($^{\circ}\text{C}$) for (a) 25 January 2020 and (b) 2 February 2020, with the *Atalante* track during the first (26 January) and second (2–3 February) intensive leg. The color shows the SST measured by the ship’s thermosalinograph (TSG) at 5 m depth, and the ticks show the location of Vaisala (squares) and Meteomodem (circles) radiosonde launches. Inserts in the upper corners, where the black lines indicate the ship’s course, show the larger-scale view of the corresponding scenes with the geographical imprint indicated by white squares. In the panel insert (a), the closed contours and the black diamond indicate, respectively, the edges of an anticyclonic eddy and the position of its center.

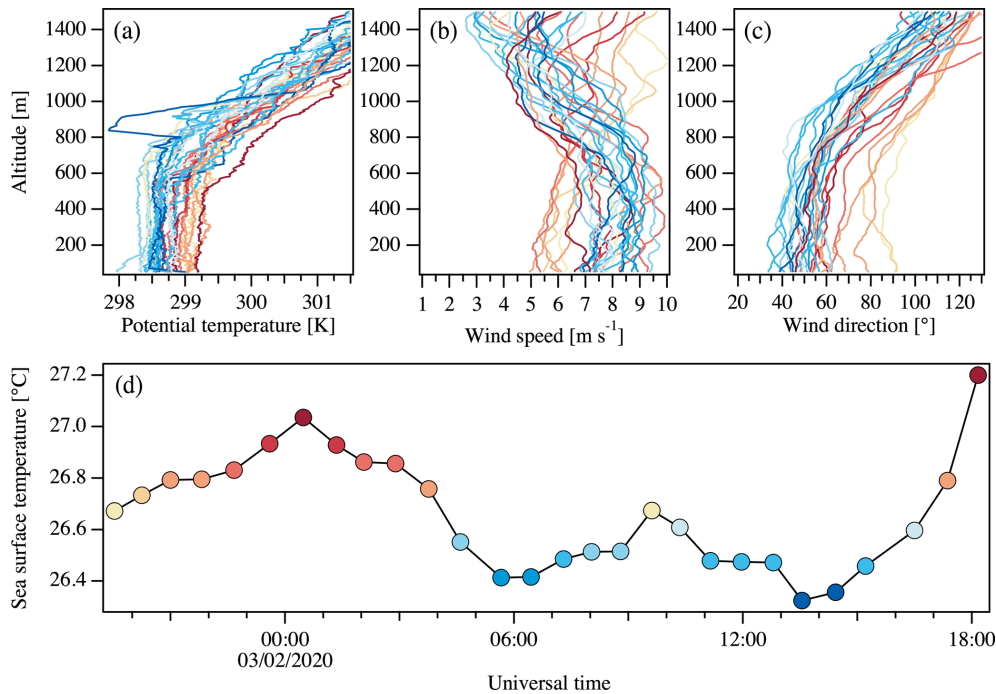


Figure A2. Vertical profiles (50–1500 m) from Meteomodem M10 sondes launched during the second targeted intensive radiosonde period (Fig. A1b) for (a) potential temperature and horizontal wind (b) speed and (c) direction, and (d) the corresponding SST time series from the *Atalante* TSG, with each circle corresponding to a Meteomodem launch. Colors are indicative of the SST ($^{\circ}\text{C}$) at the time of each launch. Vertical profiles are built from Level 0 raw measurements. Date format: dd/mm/yyyy.

No attempt has been made to disentangle either diurnal- or synoptic-scale variability from the imprint of the SST front on the lower atmosphere. However, one can note that the warm side of the SST front was sampled mostly during nighttime (local noon at 15:30 UTC, nighttime from 22:00–10:00 UTC). There is a clear tendency for warmer bound-

ary layers over the warm side of the front than over the cold side (Fig. A2a). On the other hand, the height of the mixed layer, which can be defined as near-homogeneous potential temperature layers close to the surface, tends to be deeper over the cold side than over the warm side. This contrasts with results obtained over stronger SST fronts from obser-

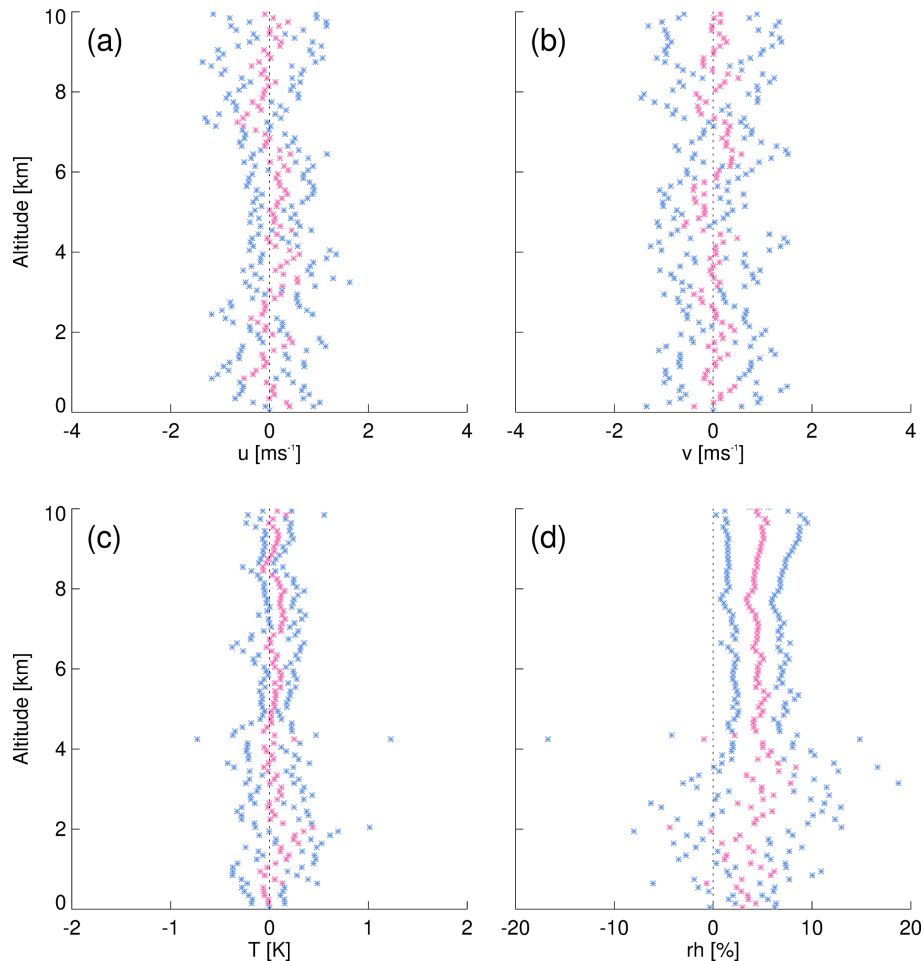


Figure A3. For *Atalante* soundings launched within ± 25 min, the mean difference Meteomodem–Vaisala (pink) and ± 1 standard deviation (blue) computed on eight difference profiles with a vertical resolution of 100 m. Shown are difference profiles for (a) zonal wind, (b) meridional wind, (c) temperature, and (d) relative humidity.

vation (Ablain et al., 2014) and modeling studies (e.g., Kilpatrick et al., 2013; Redelsperger et al., 2019) and suggests that the lower atmosphere does not solely respond to the SST gradient. Over the cold side, wind speed tends to decrease with altitude (Fig. A2b). Over the warm side, and despite a larger variability from one profile to another, the wind speed tends to be more homogeneous in the vertical than on the cold side. Because the mixed-layer depth is shallower over the warm side, however, it is difficult to interpret this as the result of a stronger vertical turbulent mixing. Overall, near-surface wind speed tends to be slightly weaker on the warm side than on the cold side. There is also a noticeable change in wind direction throughout the boundary layer from E-NE over the warm side to NE over the cold side (Fig. A2c).

Finally, we provide a first assessment of the quality of Meteomodem M10 measurements based on the *Atalante* soundings, as Vaisala soundings were also launched during the intensive Meteomodem periods. We compare Meteomodem and Vaisala wind, temperature, and relative humidity profiles

for eight pairs of soundings that were launched within 25 min of each other (Fig. A3). Choosing such a small time period certainly limits the number of difference profiles that can be computed, but it ensures that the two radiosondes have sampled comparable situations. Mean difference profiles and corresponding standard deviations are computed on 100 m bins. Neither horizontal wind components (Fig. A3a, b) nor temperature (Fig. A3c) show any clear bias, although the differences between Meteomodem and Vaisala can be a few meters per second for the wind components (standard deviation of about $0.5\text{--}1\text{ m s}^{-1}$) and about $1\text{ }^{\circ}\text{C}$ for temperature (standard deviation of about $0.1\text{--}0.2\text{ }^{\circ}\text{C}$). On the other hand, despite a large amount of noise below 4 km height, relative humidity shows a rather homogeneous moist bias of about 5% ($1\text{--}5\%$ standard deviation) in Meteomodem measurements compared with Vaisala (Fig. A3d). No correction was applied, neither to the temperature nor to the relative humidity measurements. In particular, corrections for the relative humidity seem necessary but are still a matter of research. An example

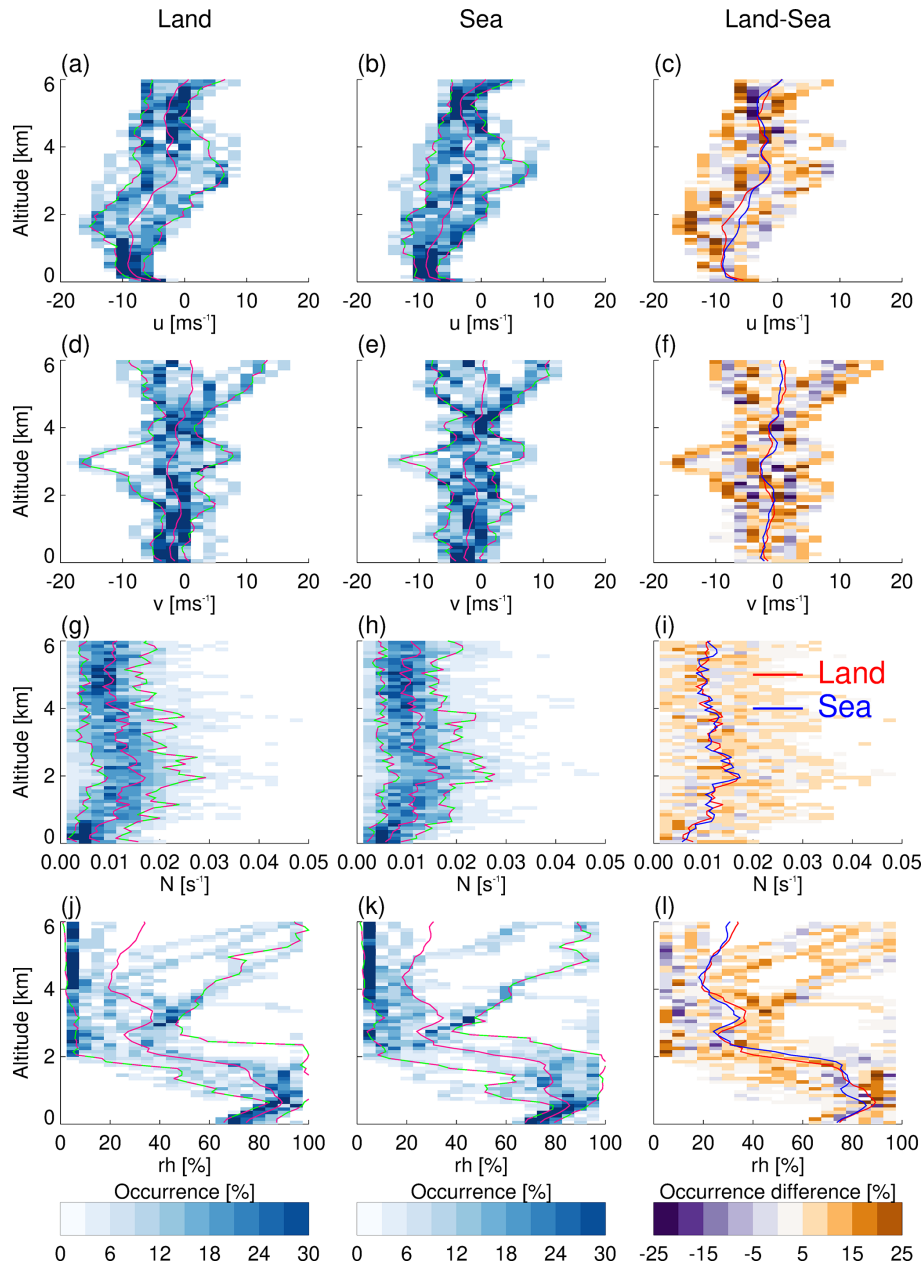


Figure A4. As in Fig. 13, but, instead of comparing different regions, we here compare ascending soundings launched from BCO with ascending soundings launched within ± 90 min from nearby ships (within 1° longitude to the east and $\pm 1^\circ$ latitude of BCO, resulting in 12 matching soundings). Altitude bins are 100 m deep, and there are 20 bins on the x axis.

of such corrections, developed for soundings at continental mid-latitude, can be found in Dupont et al. (2020).

Author contributions. SB and BS designed the sounding strategy, which was then refined and realized in cooperation with CCS and SPdS. SaS (cruise lead, *Atalante*) designed, with GR, and managed the measurements on board *Atalante*. SK (cruise lead, *Meteor*) and FJ (responsible for BCO operations) managed the logistics of purchasing and transporting the radiosonde equipment. BC and RW processed the Meteomodem data. AD investigated the dataflow through the GTS. The majority of radiosonde launches were performed by GB, KB, TB, AD, JG, KCH, SAL, YM, AN, AR, MaxR, MarR, JR, PS, IS, MKS, and EW. CA, TD, RL, RP, EQM, and SaS played a leading role in the experimental execution. HB and SPdS contributed to the design of the radiosonde network. HS processed, quality-checked, and analyzed the data. CCS prepared the manuscript with contributions from all co-authors.

Competing interests. The authors declare that they have no conflict of interest.

Special issue statement. This article is part of the special issue “Elucidating the role of clouds–circulation coupling in climate: data sets from the 2020 (EUREC4A) field campaign”. It is not associated with a conference.

Acknowledgements. We acknowledge Olivier Garrouste and Axel Roy from Météo-France for lending the Meteomodem station and launcher and their technical assistance, and Thierry Jimonet and Météo-France Guadeloupe for their help. We would like to thank Rudolf Krockauer and Tanja Kleinert (DWD), Bruce Ingleby (ECMWF), and Jeff Ator (NOAA) for helping to track the radiosonde data sent to the GTS. We would like to thank Sophie Bouffies-Cloch e (IPSL) and Florent Beucher (MF) for making ECMWF and ARPEGE forecasts available in real time. We thank the captains and crews of all ships for their help in successfully completing all the planned observations. We are grateful to Doris J ordens for the technical support with the Vaisala equipment and to Ingo Lange, Harald Budweg, and Rudolf Krockauer for their help with training our operators. We would like to thank the numerous volunteers performing launches at BCO and Andreas Kopp, Joachim Ribbe, Klaus Reus, Diego Lange, Alex Kellmann, and Nicolas Geyskens for launches on the research vessels. We would like to express our special gratitude to Angela Gruber for resolving any problems before they became problems. The ceilometer data from *Meteor* (Jansen, 2020b) and surface meteorology data from the BCO (Jansen, 2020a) are publicly available. We acknowledge the use of imagery from the NASA Worldview application (<https://worldview.earthdata.nasa.gov>, last access: 20 December 2020), part of the NASA Earth Observing System Data and Information System (EOSDIS). The Ssalto/Duacs altimeter products were produced and distributed by the Copernicus Marine and Environment Monitoring Service (CMEMS) (<http://www.marine.copernicus.eu>, last access: 20 December 2020). The Collecte Localisation Satellites (CLS) SST and Chlorophyll-*a* CATSAT products (<https://www.catsat.com/ocean-data/>, last access: 20 December 2020) were made available to us during the cruise in the framework of the Donn ees et Services pour l’Oc ean (ODATIS) French national data infrastructure. The *Atalante* cruise was funded through the EU Horizon

2020 program under grant agreement 817578 (TRIATLAS project), and through the EUREC⁴A-OA project by the following French institutions: the national INSU-CNRS program LEFE, the French Research Fleet, Ifremer, CNES, the Department of Geosciences of ENS through the Chaire Chanel program, and M et eo-France. Vaisala radiosondes were funded by the Max Planck Society and the US National Oceanic and Atmospheric Administration Ocean and Atmospheric Research grant number NA19OAR4310375. Meteomodem radiosondes were funded thanks to Caroline Muller by the European Research Council (ERC) under the European Union’s Horizon 2020 research and innovation program (project CLUSTER, grant agreement no. 805041). Claudia C. Stephan was supported by the Minerva Fast Track Program of the Max Planck Society.

Financial support. This research has been supported by the Max-Planck-Gesellschaft.

Review statement. This paper was edited by Gijs de Boer and reviewed by two anonymous referees.

References

- Ablain, M., Legeais, J., Prandi, P., Marcos, M., Fenoglio-Marc, L., Dieng, H., Benveniste, J., and Cazenave, A.: Satellite altimetry-based sea level at global and regional scales, *Surv. Geophys.*, 38, 7–31, <https://doi.org/10.1007/s10712-016-9389-8>, 2017.
- Ablain, Y., Tomita, H., Cronin, M., and Bond, N. A.: Atmospheric pressure response to mesoscale sea surface temperature variations in the Kuroshio Extension region: In situ evidence, *J. Geophys. Res.-Atmos.*, 119, 8015–8031, <https://doi.org/10.1002/2013JD021126>, 2014.
- Albrecht, B. A.: Effects of precipitation on the thermodynamic structure of the trade wind boundary layer, *J. Geophys. Res.-Atmos.*, 98, 7327–7337, <https://doi.org/10.1029/93JD00027>, 1993.
- Albrecht, B. A., Betts, A. K., Schubert, W. H., and Cox, S. K.: Model of the thermodynamic structure of the trade-wind boundary layer: Part I. Theoretical formulation and sensitivity tests, *J. Atmos. Sci.*, 36, 73–89, [https://doi.org/10.1175/1520-0469\(1979\)036<0073:MOTTSO>2.0.CO;2](https://doi.org/10.1175/1520-0469(1979)036<0073:MOTTSO>2.0.CO;2), 1979.
- Albrecht, B. A., Bretherton, C. S., Johnson, D., Schubert, W. H., and Frisch, A. S.: The Atlantic Stratocumulus Transition Experiment–ASTEX, *B. Am. Meteorol. Soc.*, 76, 889–904, [https://doi.org/10.1175/1520-0477\(1995\)076<0889:TASTE>2.0.CO;2](https://doi.org/10.1175/1520-0477(1995)076<0889:TASTE>2.0.CO;2), 1995.
- Arakawa, A. and Schubert, W. H.: Interaction of a cumulus cloud ensemble with the large-scale environment, Part I, *J. Atmos. Sci.*, 31, 674–701, [https://doi.org/10.1175/1520-0469\(1974\)031<0674:IOACCE>2.0.CO;2](https://doi.org/10.1175/1520-0469(1974)031<0674:IOACCE>2.0.CO;2), 1974.
- Augstein, E., Riehl, H., Ostapoff, F., and Wagner, V.: Mass and energy transports in an undisturbed Atlantic trade-wind flow, *Mon. Weather Rev.*, 101, 101–111, [https://doi.org/10.1175/1520-0493\(1973\)101<0101:MAETIA>2.3.CO;2](https://doi.org/10.1175/1520-0493(1973)101<0101:MAETIA>2.3.CO;2), 1973.
- Baker, M.: Trade Cumulus Observations, in: The representation of cumulus convection in numerical models, edited by: Emanuel,

- K. A. and Raymond, D. J., *Am. Meteor. Soc.*, Boston, MA, https://doi.org/10.1007/978-1-935704-13-3_3, 29–37, 1993.
- Bolton, D.: The computation of equivalent potential temperature, *Mon. Weather Rev.*, 108, 1046–1053, [https://doi.org/10.1175/1520-0493\(1980\)108<1046:TCOEPT>2.0.CO;2](https://doi.org/10.1175/1520-0493(1980)108<1046:TCOEPT>2.0.CO;2), 1980.
- Bony, S. and Stevens, B.: Measuring area-averaged vertical motions with dropsondes, *J. Atmos. Sci.*, 76, 767–783, <https://doi.org/10.1175/JAS-D-18-0141.1>, 2019.
- Bony, S., Stevens, B., Frierson, D. M. W., Jakob, C., Kageyama, M., Pincus, R., Shepherd, T. G., Sherwood, S. C., Siebesma, A. P., Sobel, A. H., Watanabe, M., and Webb, M. J.: Clouds, circulation and climate sensitivity, *Nat. Geosci.*, 8, 261, <https://doi.org/10.1038/ngeo2398>, 2015.
- Bony, S., Stevens, B., Ament, F., Bigorre, S., Chazette, P., Crewell, S., Delanoë, J., Emanuel, K., Farrell, D., Flamant, C., Gross, S., Hirsch, L., Karstensen, J., Mayer, B., Nuijens, L., Ruppert, J. H., Sandu, I., Siebesma, P., Speich, S., Szczap, F., Totems, J., Vogel, R., Wendisch, M., and Wirth, M.: EUREC4A: A field campaign to elucidate the couplings between clouds, convection and circulation, *Surv. Geophys.*, 38, 1529–1568, <https://doi.org/10.1007/s10712-017-9428-0>, 2017.
- Bony, S., Schulz, H., Vial, J., and Stevens, B.: Sugar, gravel, fish and flowers: Dependence of mesoscale patterns of trade-wind clouds on environmental conditions, *Geophys. Res. Lett.*, 47, e2019GL085988, <https://doi.org/10.1029/2019GL085988>, 2020.
- Bretherton, C. S.: Understanding Albrecht's model of trade cumulus cloud fields, *J. Atmos. Sci.*, 50, 2264–2283, [https://doi.org/10.1175/1520-0469\(1993\)050<2264:UAMOTC>2.0.CO;2](https://doi.org/10.1175/1520-0469(1993)050<2264:UAMOTC>2.0.CO;2), 1993.
- Ciesielski, P. E., Haertel, P. T., Johnson, R. H., Wang, J., and Loehrer, S. M.: Developing high-quality field program sounding datasets, *B. Am. Meteorol. Soc.*, 93, 325–336, <https://doi.org/10.1175/BAMS-D-11-00091.1>, 2012.
- Dupont, J.-C., Haeffelin, M., Badosa, J., Clain, G., Raux, C., and Vignelles, D.: Characterization and corrections of relative humidity measurement from Meteomodem M10 radiosondes at mid-latitude stations, *J. Atmos. Ocean. Tech.*, 37, 857–871, <https://doi.org/10.1175/JTECH-D-18-0205.1>, 2020.
- Hardy, B.: ITS-90 formulations for vapor pressure, frostpoint temperature, dewpoint temperature, and enhancement factors in the range –100 to +100 C, in: *The proceedings of the third international symposium on Humidity & Moisture*, Teddington, London, England, 1–8, April 1998.
- Hartten, L. M., Cox, C. J., Johnston, P. E., Wolfe, D. E., Abbott, S., McColl, H. A., Quan, X.-W., and Winterkorn, M. G.: Ship- and island-based soundings from the 2016 El Niño Rapid Response (ENRR) field campaign, *Earth Syst. Sci. Data*, 10, 1165–1183, <https://doi.org/10.5194/essd-10-1165-2018>, 2018.
- Jansen, F.: Surface meteorology Barbados Cloud Observatory, EUREC4A [Data set], AERIS, <https://doi.org/10.25326/54>, 2020a.
- Jansen, F.: Ceilometer measurements RV Meteor, EUREC4A [Data set], AERIS, <https://doi.org/10.25326/53>, 2020b.
- Johnson, R. H. and Ciesielski, P. E.: Structure and properties of Madden–Julian Oscillations deduced from DYNAMO sounding arrays, *J. Atmos. Sci.*, 70, 3157–3179, <https://doi.org/10.1175/JAS-D-13-065.1>, 2013.
- Kilpatrick, T., Schneider, N., and Qiu, B.: Boundary layer convergence induced by strong winds across a midlatitude SST front, *J. Climate*, 11, 1698–1718, <https://doi.org/10.1175/JCLI-D-13-00101.1>, 2013.
- Krueger, S. K.: Numerical simulation of tropical cumulus clouds and their interaction with the subcloud layer, *J. Atmos. Sci.*, 45, 2221–2250, [https://doi.org/10.1175/1520-0469\(1988\)045<2221:NSOTCC>2.0.CO;2](https://doi.org/10.1175/1520-0469(1988)045<2221:NSOTCC>2.0.CO;2), 1988.
- Kuettner, J. P. and Holland, J.: the BOMEX project, *B. Am. Meteorol. Soc.*, 50, 394–403, <https://doi.org/10.1175/1520-0477-50.6.394>, 1969.
- Laxenaire, R., Speich, S., Blanke, B., Chaigneau, A., Pegliasco, C., and Stegner, A.: Anticyclonic eddies connecting the western boundaries of Indian and Atlantic Oceans, *J. Geophys. Res.-Oceans*, 123, 7651–7677, <https://doi.org/10.1029/2018JC014270>, 2018.
- Lenschow, D. H., Savic-Jovicic, V., and Stevens, B.: Divergence and vorticity from aircraft air motion measurements, *J. Atmos. Ocean. Tech.*, 24, 2062–2072, <https://doi.org/10.1175/2007JTECHA940.1>, 2007.
- Lin, X. and Johnson, R. H.: Heating, moistening, and rainfall over the western Pacific warm pool during TOGA COARE, *J. Atmos. Sci.*, 53, 3367–3383, [https://doi.org/10.1175/1520-0469\(1996\)053<3367:HMAROT>2.0.CO;2](https://doi.org/10.1175/1520-0469(1996)053<3367:HMAROT>2.0.CO;2), 1996.
- Mapes, B. E., Ciesielski, P. E., and Johnson, R. H.: Sampling errors in Rawinsonde-array budgets, *J. Atmos. Sci.*, 60, 2697–2714, [https://doi.org/10.1175/1520-0469\(2003\)060<2697:SEIRB>2.0.CO;2](https://doi.org/10.1175/1520-0469(2003)060<2697:SEIRB>2.0.CO;2), 2003.
- Nitta, T. and Esbensen, S.: Heat and moisture budget analyses using BOMEX data, *Mon. Weather Rev.*, 102, 17–28, [https://doi.org/10.1175/1520-0493\(1974\)102<0017:HAMBAAU>2.0.CO;2](https://doi.org/10.1175/1520-0493(1974)102<0017:HAMBAAU>2.0.CO;2), 1974.
- Rauber, R. M., Ochs, H. T., Di Girolamo, L., Göke, S., Snodgrass, E., Stevens, B., Knight, C., Jensen, J. B., Lenschow, D. H., Rilling, R. A., Rogers, D. C., Stith, J. L., Albrecht, B. A., Zuidema, P., Blyth, A. M., Fairall, C. W., Brewer, W. A., Tucker, S., Lasher-Trapp, S. G., Mayol-Bracero, O. L., Vali, G., Geerts, B., Anderson, J. R., Baker, B. A., Lawson, R. P., Bandy, A. R., Thornton, D. C., Burnet, E., Brenguier, J.-L., Gomes, L., Brown, P. R. A., Chuang, P., Cotton, W. R., Gerber, H., Heikes, B. G., Hudson, J. G., Kollias, P., Krueger, S. K., Nuijens, L., O'Sullivan, D. W., Siebesma, A. P., and Twohy, C. H.: Rain in shallow cumulus over the ocean: The RICO Campaign, *B. Am. Meteorol. Soc.*, 88, 1912–1928, <https://doi.org/10.1175/BAMS-88-12-1912>, 2007.
- Redelsperger, J.-L., Bouin, M.-N., Pianezze, J., Garnier, V., and Marié, L.: Impact of a sharp, small-scale SST front on the marine atmospheric boundary layer on the Iroise Sea: Analysis from a hectometric simulation, *Q. J. Roy. Meteor. Soc.*, 145, 3692–3714, <https://doi.org/10.1002/qj.3650>, 2019.
- Reed, R. J. and Recker, E. E.: Structure and properties of synoptic-scale wave disturbances in the equatorial western Pacific, *J. Atmos. Sci.*, 28, 1117–1133, 1971.
- Schulz, H.: EUREC4A radiosonde software, Zenodo, <https://doi.org/10.5281/zenodo.3712223>, 2020a.
- Schulz, H., Eastman, R. M., and Stevens, B.: Characterization and Evolution of Organized Shallow Convection in the Trades, *Earth and Space Science Open Archive*, p. 34, <https://doi.org/10.1002/essoar.10505836.1>, 2021.
- Stephan, C. C., Schnitt, S., Schulz, H., Bellenger, H., de Szoeko, S. P., Acquistapace, C., Baier, K., Dauhut, T., Laxenaire, R.,

- Morfa-Avalos, Y., Person, R., Meléndez, E. Q., Bagheri, G., Böck, T., Güttler, J., Helfer, K. C., Kellman, A., Los, S. A., Neuberger, A., Röttenbacher, J., Raeke, A., Ringel, M., Ritschel, M., Sadoulet, P., Schirmacher, I., Stolla, M. K., Wright, E., Charpentier, B., Doerenbecher, A., Wilson, R., Jansen, F., Kinne, S., Reverdin, G., Speich, S., Bony, S., and Stevens, B.: Ship- and island-based atmospheric soundings from the 2020 EUREC4A field campaign, dataset, AERIS, https://doi.org/10.25326/137_2020.
- Stevens, B., Farrell, D., Hirsch, L., Jansen, F., Nuijens, L., Serikov, I., Brüggemann, B., Forde, M., Linne, H., Lonitz, K., and Prospero, J. M.: The Barbados Cloud Observatory: Anchoring investigations of clouds and circulation on the edge of the ITCZ, *B. Am. Meteorol. Soc.*, 97, 787–801, <https://doi.org/10.1175/BAMS-D-14-00247.1>, 2016.
- Stevens, B., Ament, F., Bony, S., Crewell, S., Ewald, F., Gross, S., Hansen, A., Hirsch, L., Jacob, M., Kölling, T., Konow, H., Mayer, B., Wendisch, M., Wirth, M., Wolf, K., Bakan, S., Bauer-Pfundstein, M., Brueck, M., Delanoë, J., Ehrlich, A., Farrell, D., Forde, M., Gödde, F., Grob, H., Hagen, M., Jäkel, E., Jansen, F., Klepp, C., Klingebiel, M., Mech, M., Peters, G., Rapp, M., Wing, A. A., and Zinner, T.: A high-altitude long-range aircraft configured as a cloud observatory: The NARVAL expeditions, *B. Am. Meteorol. Soc.*, 100, 1061–1077, <https://doi.org/10.1175/BAMS-D-18-0198.1>, 2019.
- Stevens, B., Bony, S., Brogniez, H., Hentgen, L., Hohenegger, C., Kiemle, C., L'Ecuyer, T. S., Naumann, A. K., Schulz, H., Siebesma, P. A., Vial, J., Winker, D. M., and Zuidema, P.: Sugar, gravel, fish and flowers: Mesoscale cloud patterns in the trade winds, *Q. J. Roy. Meteor. Soc.*, 146, 141–152, <https://doi.org/10.1002/qj.3662>, 2020.
- Stevens, B., Bony, S., Farrell, D., Ament, F., Blyth, A., Fairall, C., Karstensen, J., Quinn, P. K., Speich, S., Acquistapace, C., Aemisegger, F., Albright, A. L., Bellenger, H., Bodenschatz, E., Caesar, K.-A., Chewitt-Lucas, R., de Boer, G., Delanoë, J., Denby, L., Ewald, F., Fildier, B., Forde, M., George, G., Gross, S., Hagen, M., Hausold, A., Heywood, K. J., Hirsch, L., Jacob, M., Jansen, F., Kinne, S., Klocke, D., Kölling, T., Konow, H., Lotho, M., Mohr, W., Naumann, A. K., Nuijens, L., Olivier, L., Pincus, R., Pöhlker, M., Reverdin, G., Roberts, G., Schnitt, S., Schulz, H., Siebesma, A. P., Stephan, C. C., Sullivan, P., Touzé-Peiffer, L., Vial, J., Vogel, R., Zuidema, P., Alexander, N., Alves, L., Arixi, S., Asmath, H., Bagheri, G., Baier, K., Bailey, A., Baranowski, D., Baron, A., Barrau, S., Barrett, P. A., Batier, F., Behrendt, A., Bendinger, A., Beucher, F., Bigorre, S., Blades, E., Blossy, P., Bock, O., Böing, S., Bossler, P., Bourras, D., Bouruet-Aubertot, P., Bower, K., Branellac, P., Branger, H., Brennek, M., Brewer, A., Brilouet, P.-E., Brüggemann, B., Buehler, S. A., Burke, E., Burton, R., Calmer, R., Canonici, J.-C., Carton, X., Cato Jr., G., Charles, J. A., Chazette, P., Chen, Y., Chilinski, M. T., Choullarton, T., Chuang, P., Clarke, S., Coe, H., Cornet, C., Coutris, P., Couvreux, F., Crewell, S., Cronin, T., Cui, Z., Cuypers, Y., Daley, A., Damerell, G. M., Dauhut, T., Deneke, H., Desbios, J.-P., Dörner, S., Donner, S., Douet, V., Drushka, K., Dütsch, M., Ehrlich, A., Emanuel, K., Emmanouilidis, A., Etienne, J.-C., Etienne-Leblanc, S., Faure, G., Feingold, G., Ferrero, L., Fix, A., Flamant, C., Flatau, P. J., Foltz, G. R., Forster, L., Furtuna, I., Gadian, A., Galewsky, J., Gallagher, M., Gallimore, P., Gaston, C., Gentemann, C., Geyskens, N., Giez, A., Gollop, J., Gouirand, I., Gourbeyre, C., de Graaf, D., de Groot, G. E., Grosz, R., Güttler, J., Gutleben, M., Hall, K., Harris, G., Helfer, K. C., Henze, D., Herbert, C., Holanda, B., Ibanez-Landeta, A., Intrieri, J., Iyer, S., Julien, F., Kalesse, H., Kazil, J., Kellman, A., Kidane, A. T., Kirchner, U., Klingebiel, M., Körner, M., Krempfer, L. A., Kretzschmar, J., Krüger, O., Kumala, W., Kurz, A., L'Hégaret, P., Labaste, M., Lachlan-Cope, T., Laing, A., Landschützer, P., Lang, T., Lange, D., Lange, I., Laplace, C., Lavik, G., Laxenaire, R., Le Bihan, C., Leandro, M., Lefevre, N., Lena, M., Lenschow, D., Li, Q., Lloyd, G., Los, S., Losi, N., Lovell, O., Luneau, C., Makuch, P., Malinowski, S., Manta, G., Marinou, E., Marsden, N., Masson, S., Maury, N., Mayer, B., Mayers-Als, M., Mazel, C., McGeary, W., McWilliams, J. C., Mech, M., Mehlmann, M., Meroni, A. N., Mieslinger, T., Minikin, A., Minnett, P., Möller, G., Morfa Avalos, Y., Muller, C., Musat, I., Napoli, A., Neuberger, A., Noisel, C., Noone, D., Nordsiek, F., Nowak, J. L., Oswald, L., Parker, D. J., Peck, C., Person, R., Philippi, M., Plueddemann, A., Pöhlker, C., Pörtge, V., Pöschl, U., Pologne, L., Posyniak, M., Prange, M., Quiñones Meléndez, E., Radtke, J., Ramage, K., Reimann, J., Renault, L., Reus, K., Reyes, A., Ribbe, J., Ringel, M., Ritschel, M., Rocha, C. B., Rochetin, N., Röttenbacher, J., Rollo, C., Royer, H., Sadoulet, P., Saffin, L., Sandiford, S., Sandu, I., Schäfer, M., Schemann, V., Schirmacher, I., Schlenczek, O., Schmidt, J., Schröder, M., Schwarzenboeck, A., Sealy, A., Senff, C. J., Serikov, I., Shohan, S., Siddle, E., Smirnov, A., Späth, F., Spooner, B., Stolla, M. K., Szkółka, W., de Szoeko, S. P., Tarot, S., Tetoni, E., Thompson, E., Thomson, J., Tomassini, L., Totems, J., Ubele, A. A., Villiger, L., von Arx, J., Wagner, T., Walther, A., Webber, B., Wendisch, M., Whitehall, S., Wiltshire, A., Wing, A. A., Wirth, M., Wiskandt, J., Wolf, K., Worbes, L., Wright, E., Wulfmeyer, V., Young, S., Zhang, C., Zhang, D., Ziemann, F., Zinner, T., and Zöger, M.: EUREC4A, *Earth Syst. Sci. Data Discuss.* [preprint], <https://doi.org/10.5194/essd-2021-18>, in review, 2021.
- Suhr, I. and Martin, C.: Atmospheric Sounding Processing Environment (ASPEN) User Manual, available at: <https://ncar.github.io/aspdocs/pdf/aspdocs.pdf>, last access: 20 December 2020.
- Taburet, G., Sanchez-Roman, A., Ballarotta, M., Pujol, M.-I., Legéais, J.-F., Fournier, F., Faugere, Y., and Dibarboure, G.: DUACS DT2018: 25 years of reprocessed sea level altimetry products, *Ocean Sci.*, 15, 1207–1224, <https://doi.org/10.5194/os-15-1207-2019>, 2019.
- Tiedtke, M.: A comprehensive mass flux scheme for cumulus parameterization in large-scale models, *Mon. Weather Rev.*, 117, 1779–1800, [https://doi.org/10.1175/1520-0493\(1989\)117<1779:ACMFSF>2.0.CO;2](https://doi.org/10.1175/1520-0493(1989)117<1779:ACMFSF>2.0.CO;2), 1989.
- vanZanten, M. C., Stevens, B., Nuijens, L., Siebesma, A. P., Ackerman, A. S., Burnet, F., Cheng, A., Couvreux, F., Jiang, H., Khairoutdinov, M., Kogan, Y., Lewellen, D. C., Mechem, D., Nakamura, K., Noda, A., Shipway, B. J., Slawinska, J., Wang, S., and Wyszogrodzki, A.: Controls on precipitation and cloudiness in simulations of trade-wind cumulus as observed during RICO, *J. Adv. Model. Earth Sy.*, 3, M06001, <https://doi.org/10.1029/2011MS000056>, 2011.
- WMO: Manual on the Global Telecommunication System No 386, Part II, Att II-5, “Data Designators T1T2A1A2ii in abbreviated headings”, available at: <https://community.wmo.int/activity-areas/operational-information-service/volume-c1> (last access: 20 December 2020), 2009.

Xue, H., Feingold, G., and Stevens, B.: Aerosol effects on clouds, precipitation, and the organization of shallow cumulus convection, *J. Atmos. Sci.*, 65, 392–406, <https://doi.org/10.1175/2007JAS2428.1>, 2008.

Yanai, M., Esbensen, S., and Chu, J.-H.: Determination of bulk properties of tropical cloud clusters from large-scale heat and moisture budgets, *J. Atmos. Sci.*, 30, 611–627, [https://doi.org/10.1175/1520-0469\(1973\)030<0611:DOBPOT>2.0.CO;2](https://doi.org/10.1175/1520-0469(1973)030<0611:DOBPOT>2.0.CO;2), 1973.

Yoneyama, K., Hanyu, M., Sueyoshi, S., Yoshiura, F., and Katsumata, M.: Radiosonde observation from ships in the tropical region, Report of Japan Marine Science and Technology Center, Rep., 45, 31–39, 2002.