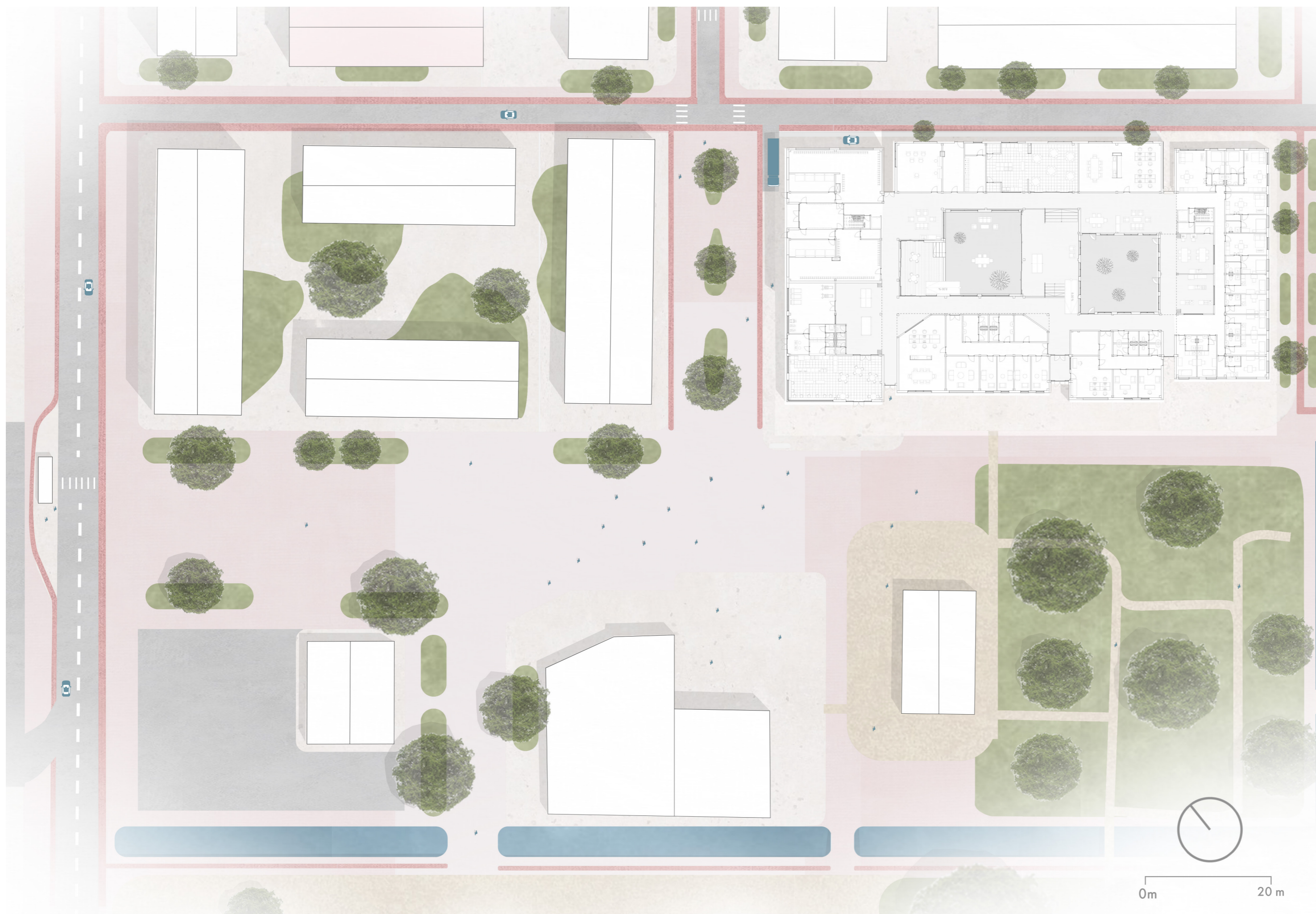


# PHOENIX

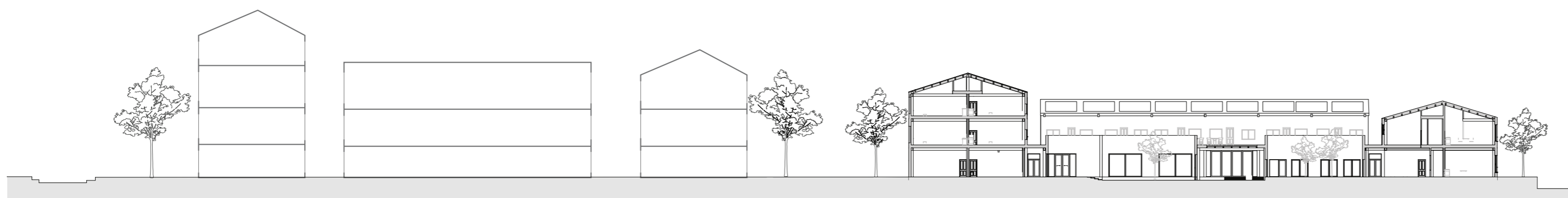
## Reborn Into Society



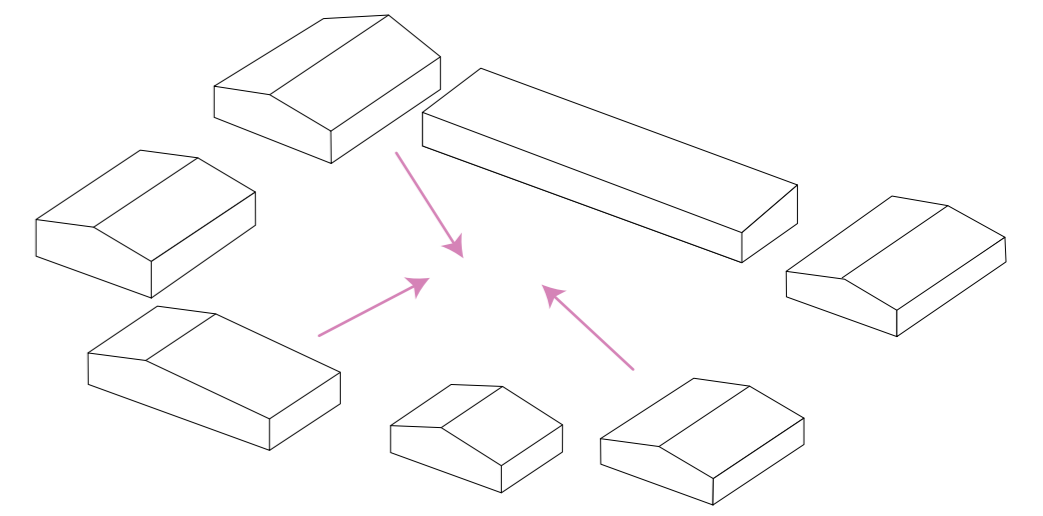
Master Plan Drawing



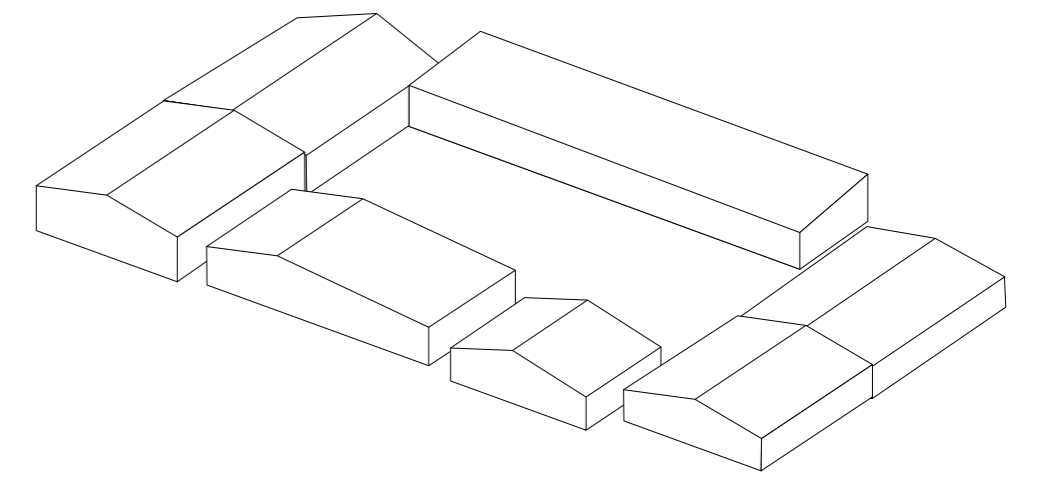
Building in the site



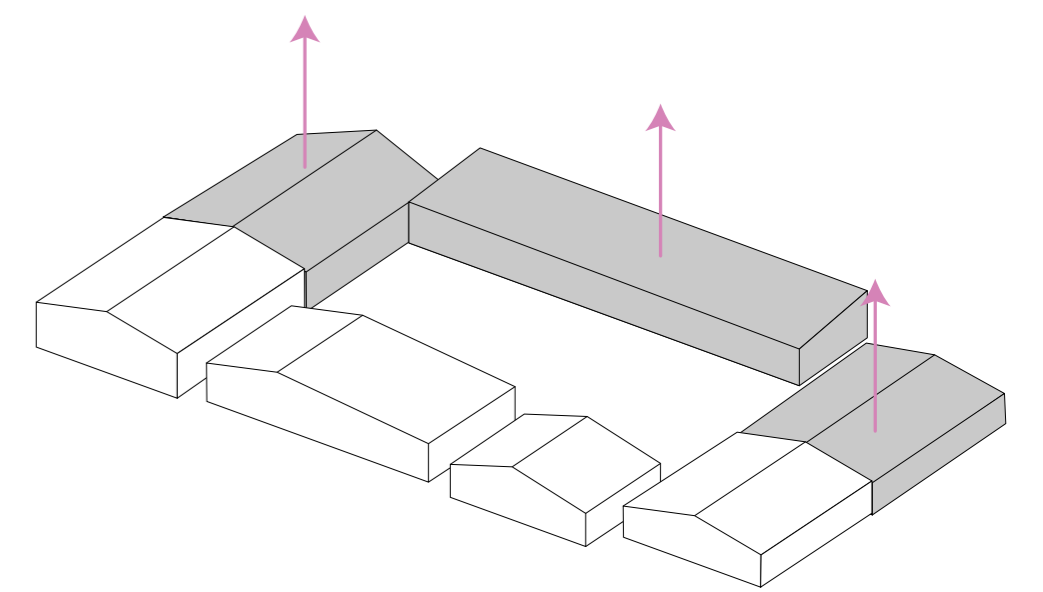
Urban Section (1:500)



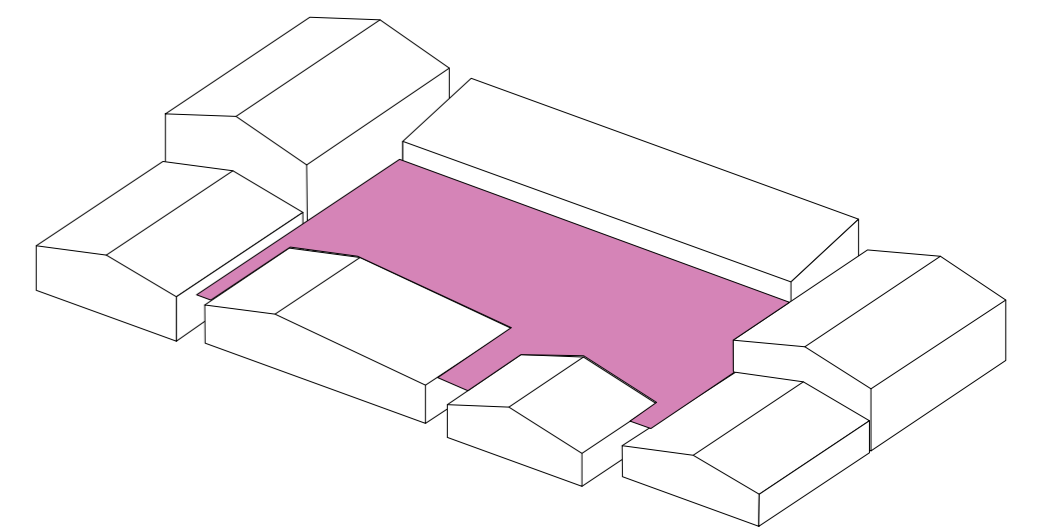
Bringing typologies around the context



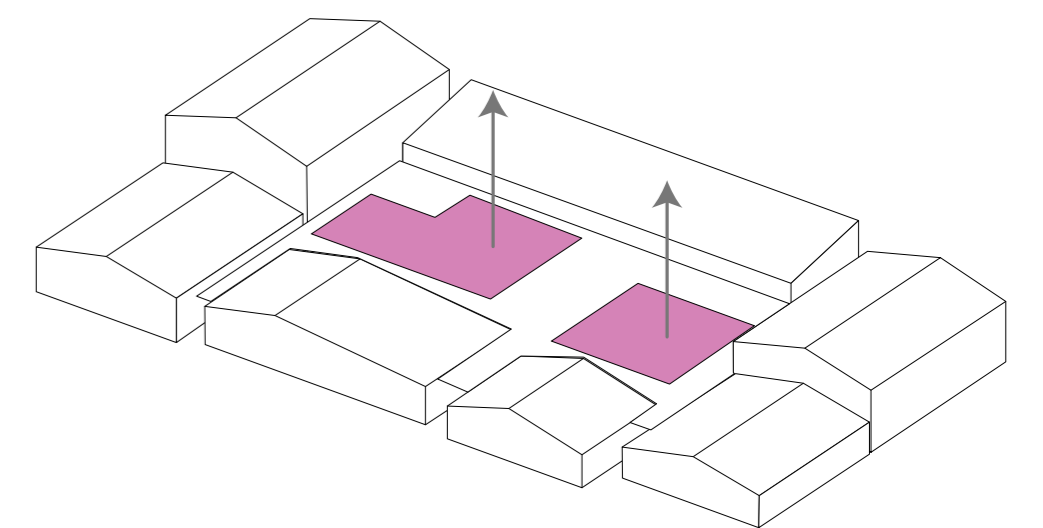
Clumping them into one group



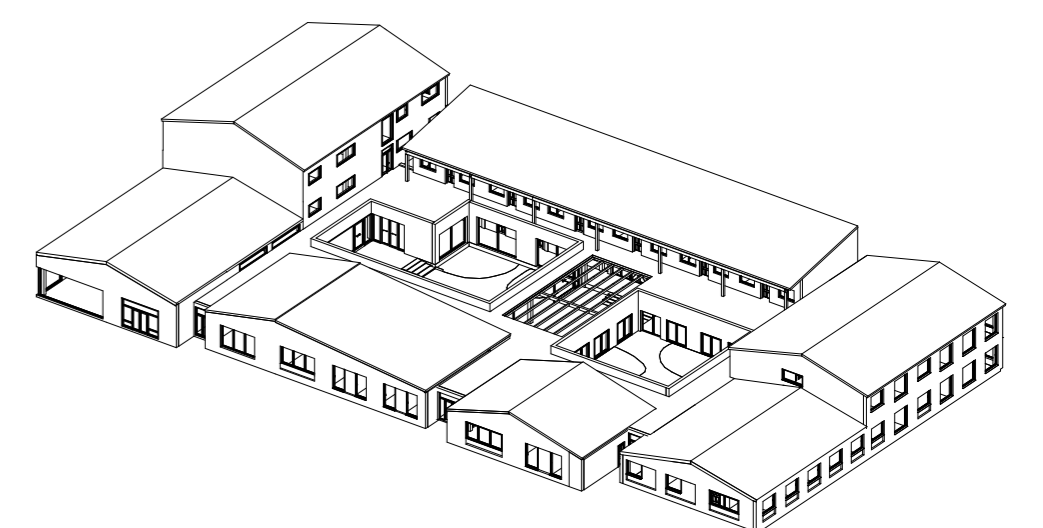
Adjusting heights according to sunpath



Bringing the buildings together



Taking out volumes to create courtyards

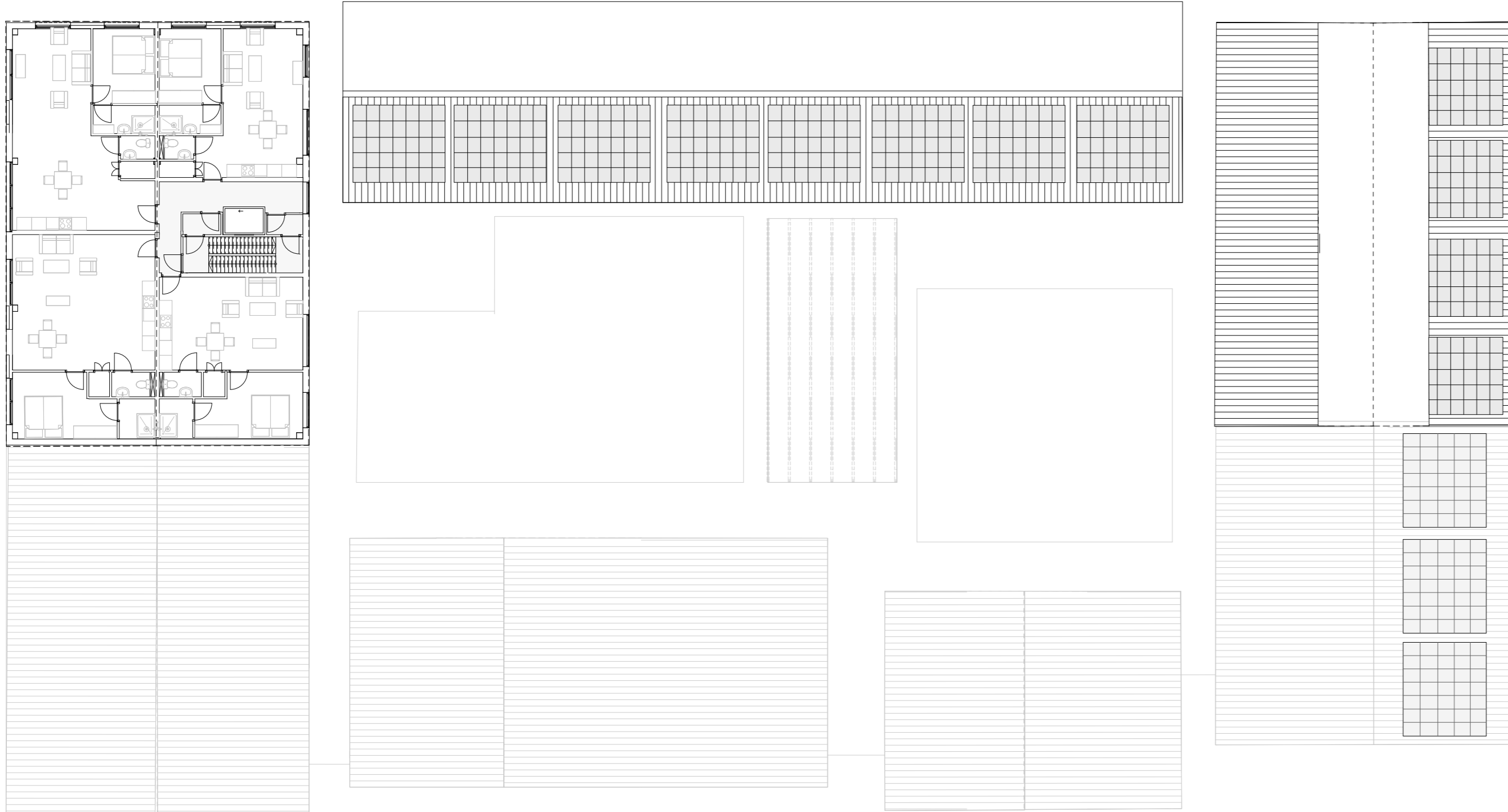





Ground Floor Plan (1:200) 



First Floor Plan (1:200) 



Second Floor Plan (1:200) 



Perspective from the Main Common Area



Perspective from the Public Side of the Building



Perspective from the Coffee Corner



Perspective from the Low Interaction Area

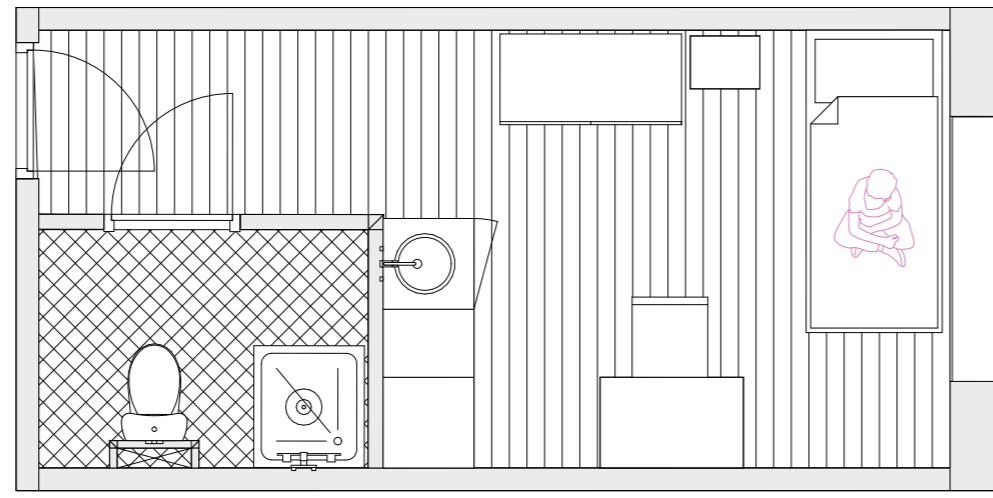
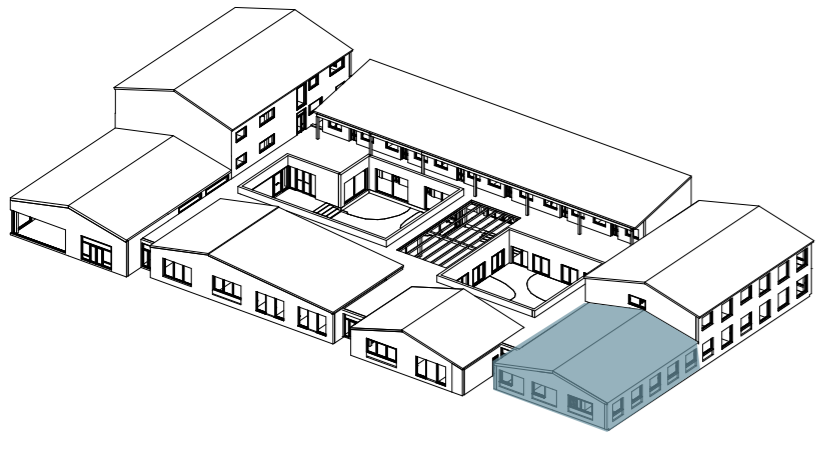


Perspective from the Corridor



Perspective from the Upper Walking Path

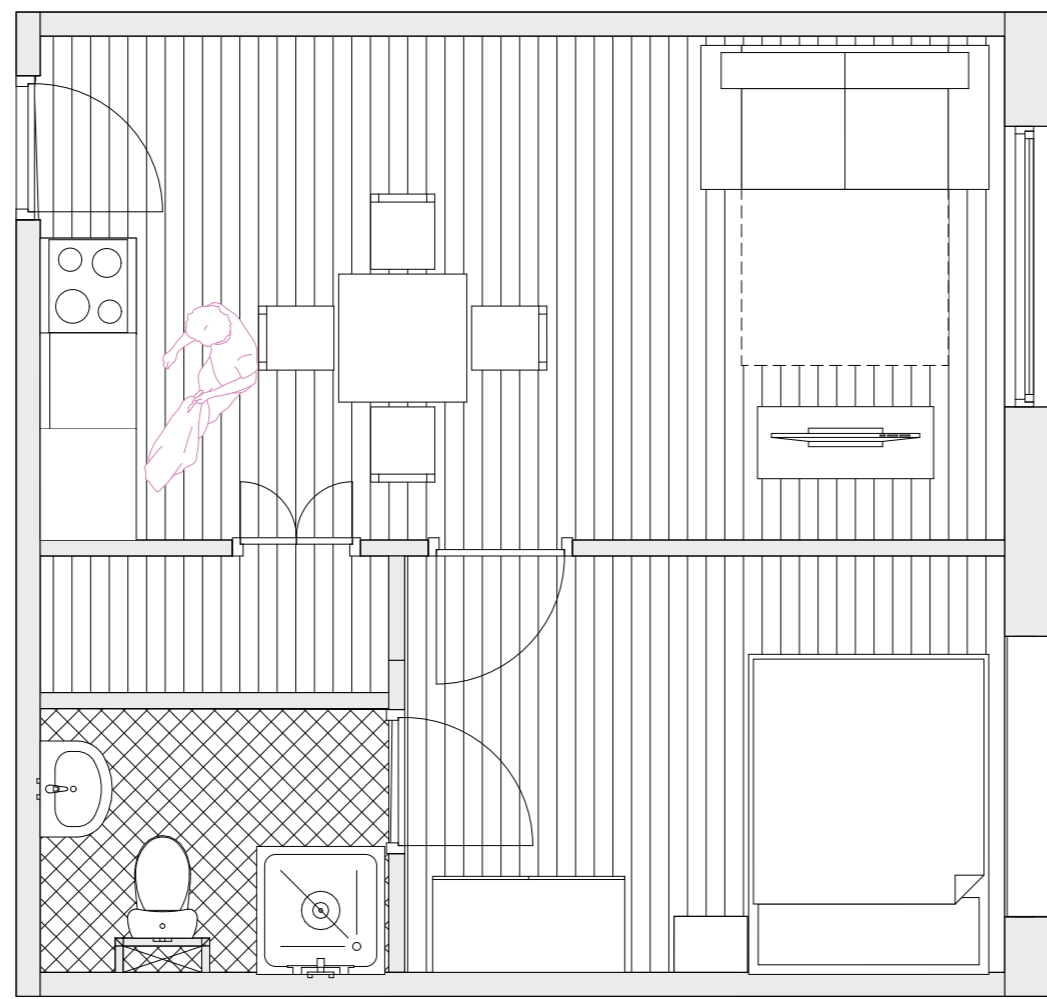
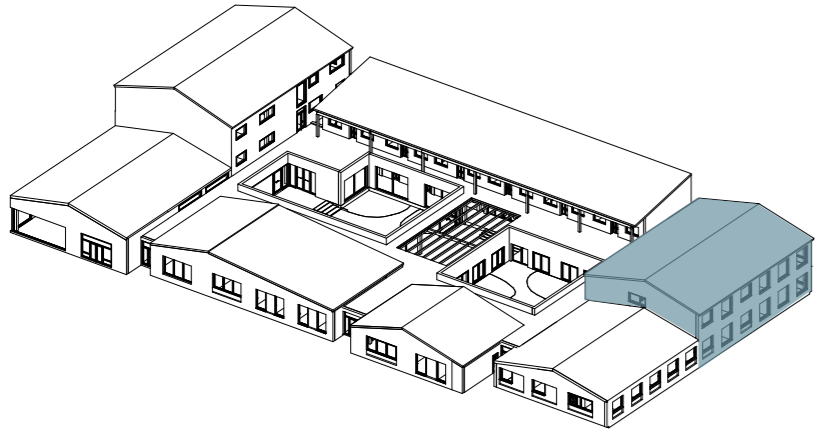




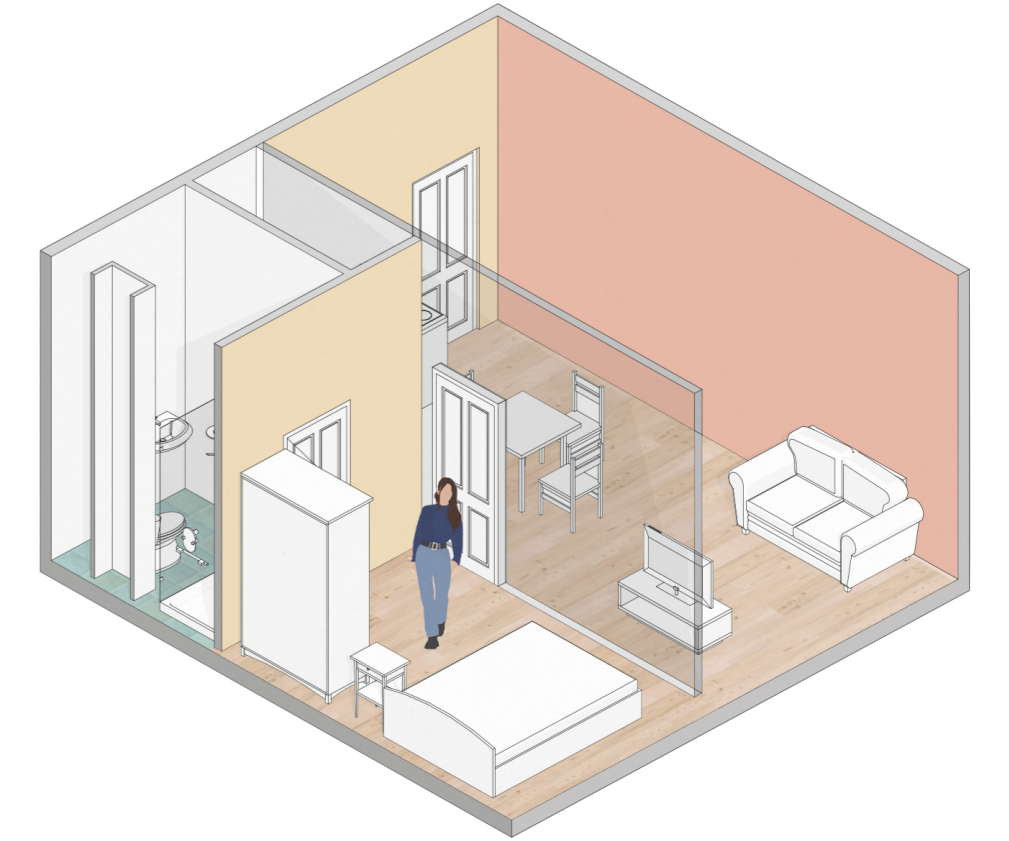
18 m2  
 Studio  
 Designed for 1  
 Small kitchen  
 Single bed  
 No tv or couch



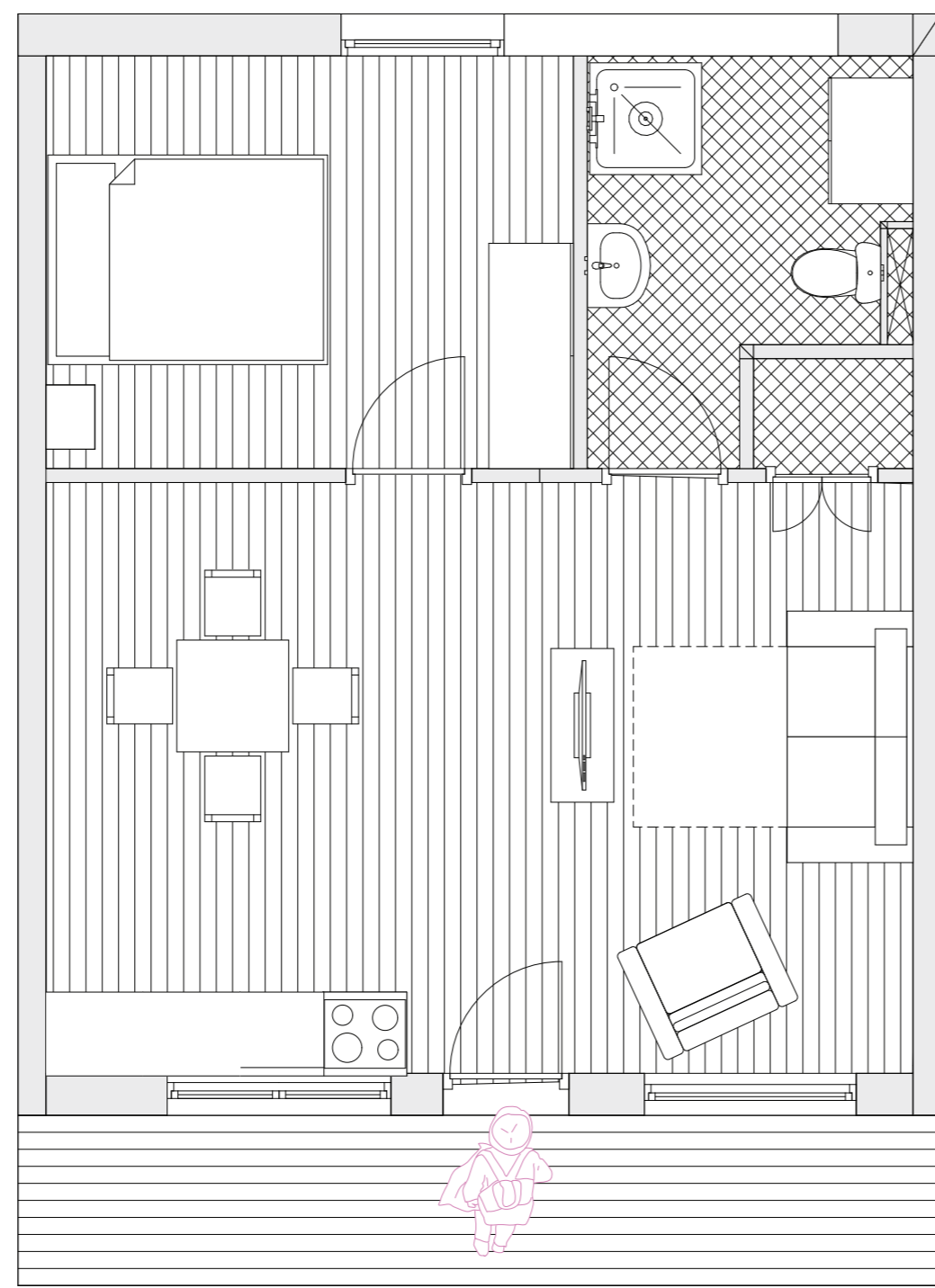
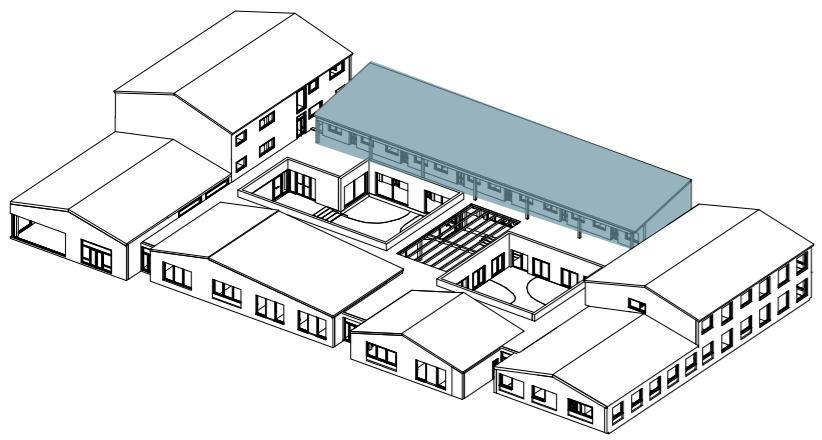
Type A: Small rooms (1:50)



36 m2  
 1+1  
 Designed for 1  
 Double bed  
 Small living room  
 Small kitchen



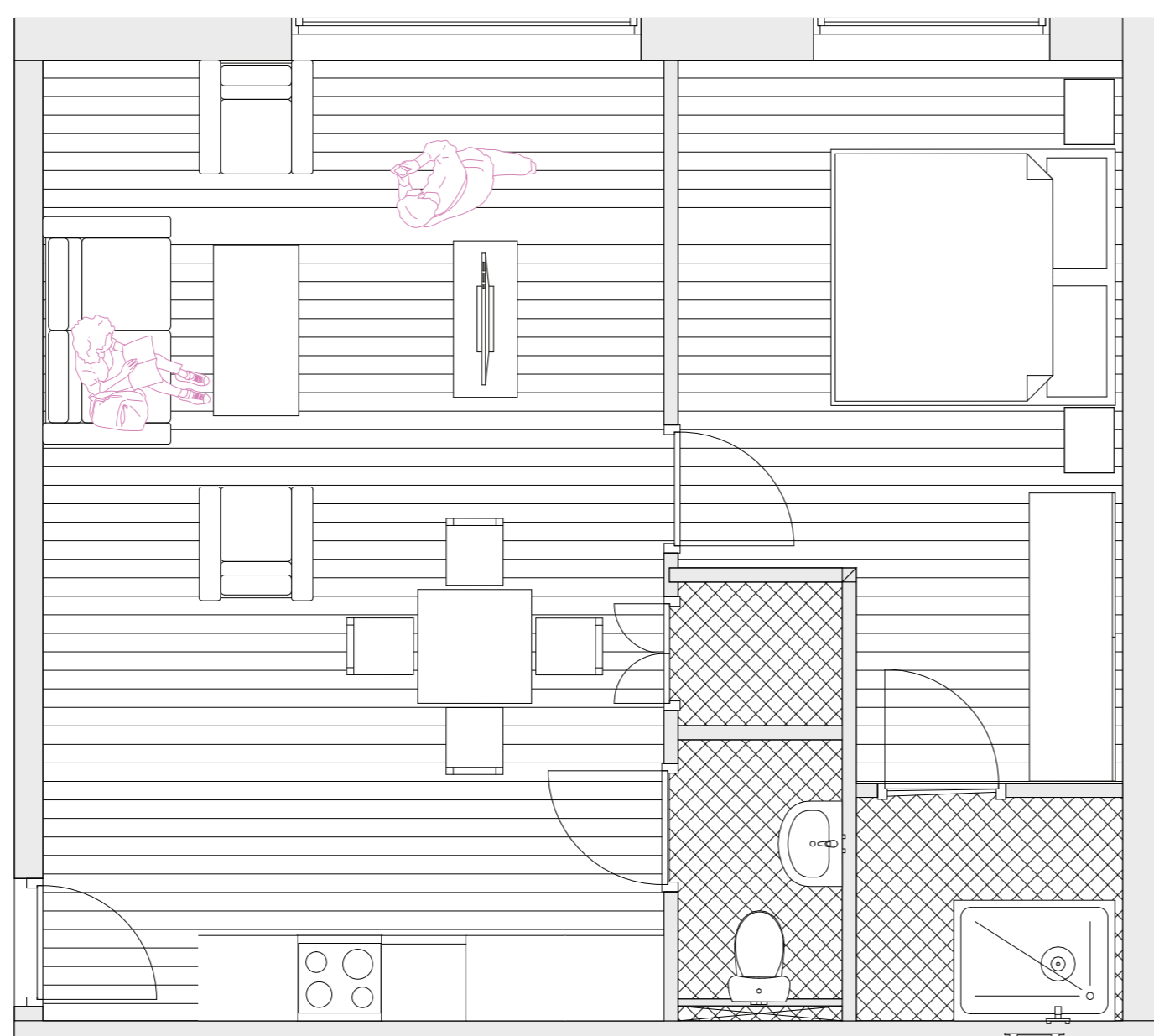
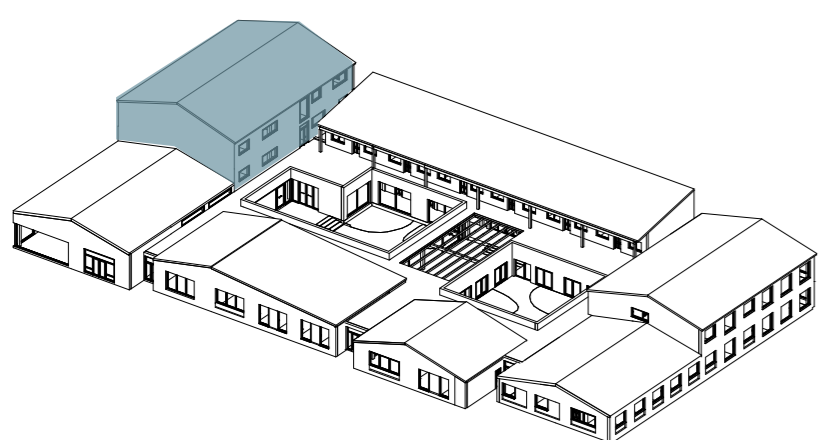
Type B: Small Apartments (1:50)



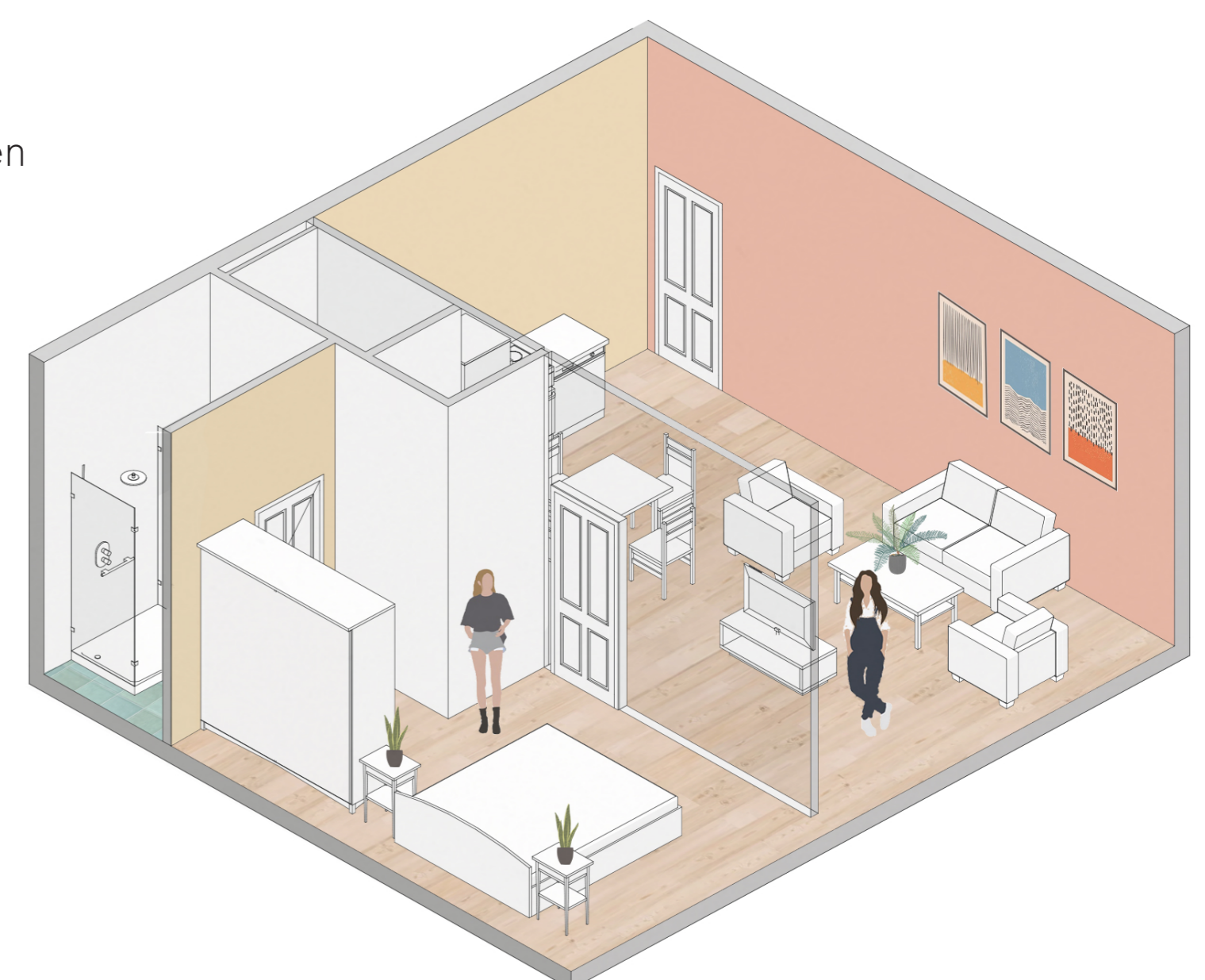
42 m2  
 1+1  
 Designed for 1  
 Double bed  
 Living room  
 Equipped Kitchen  
 Small terrace  
 storage in the attic



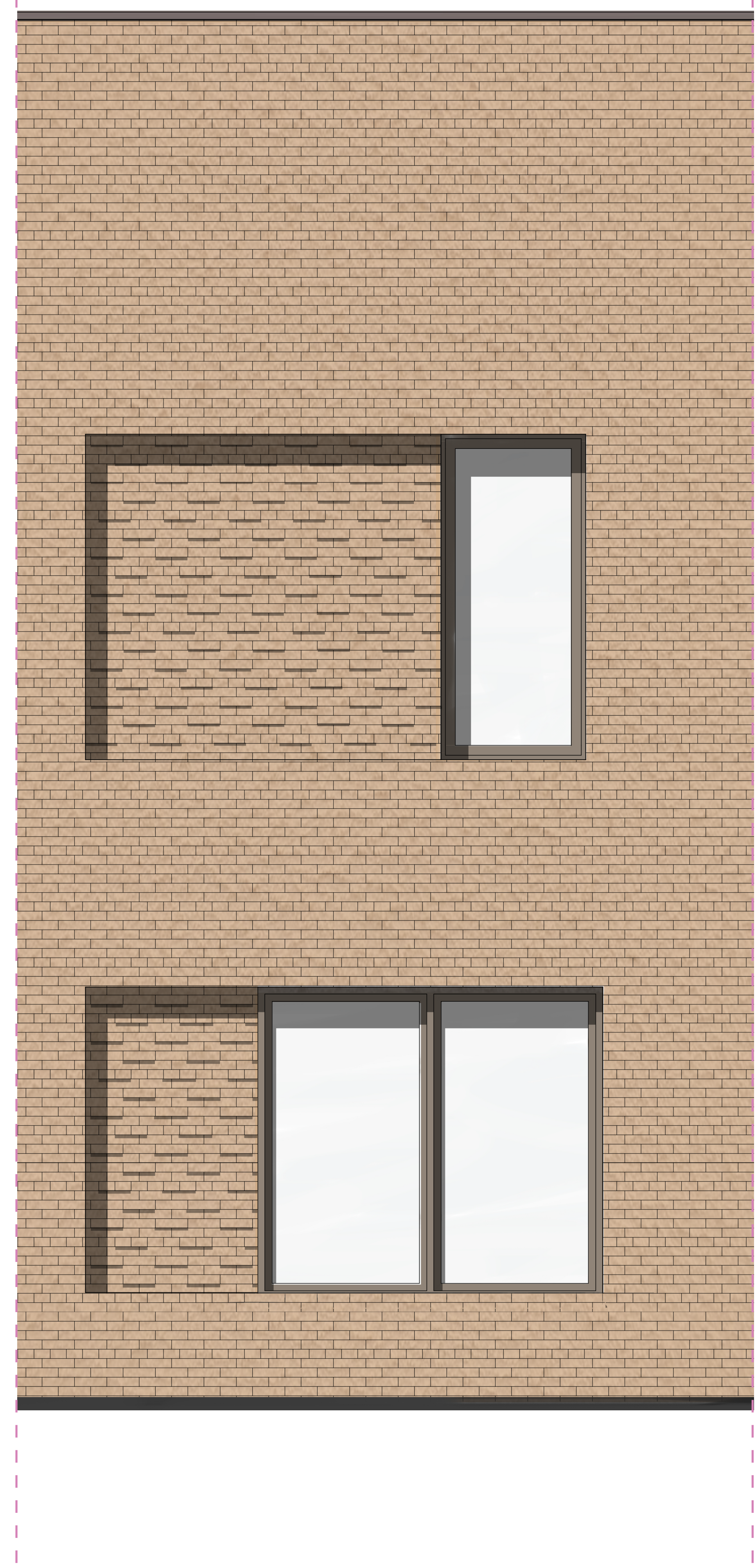
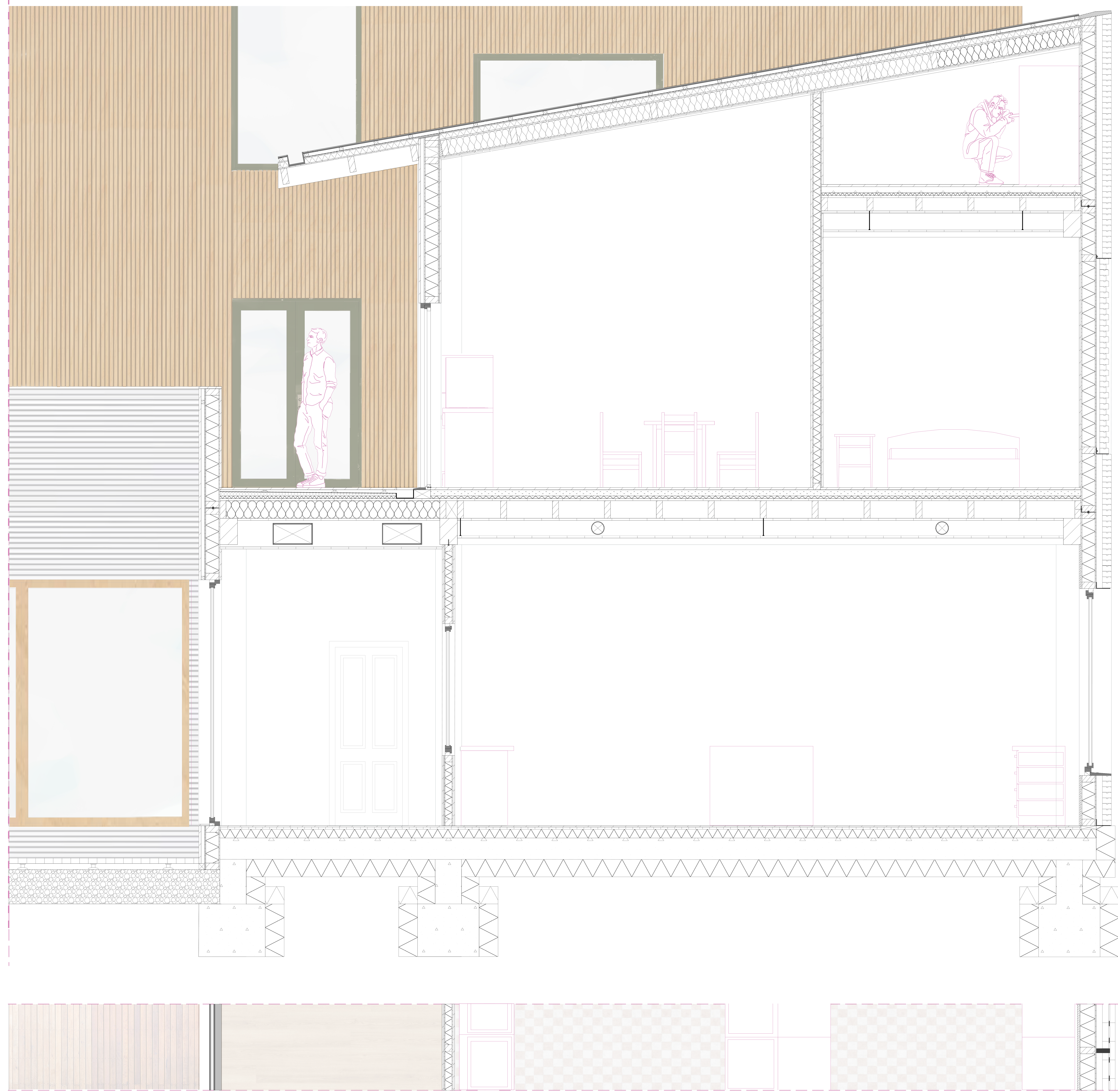
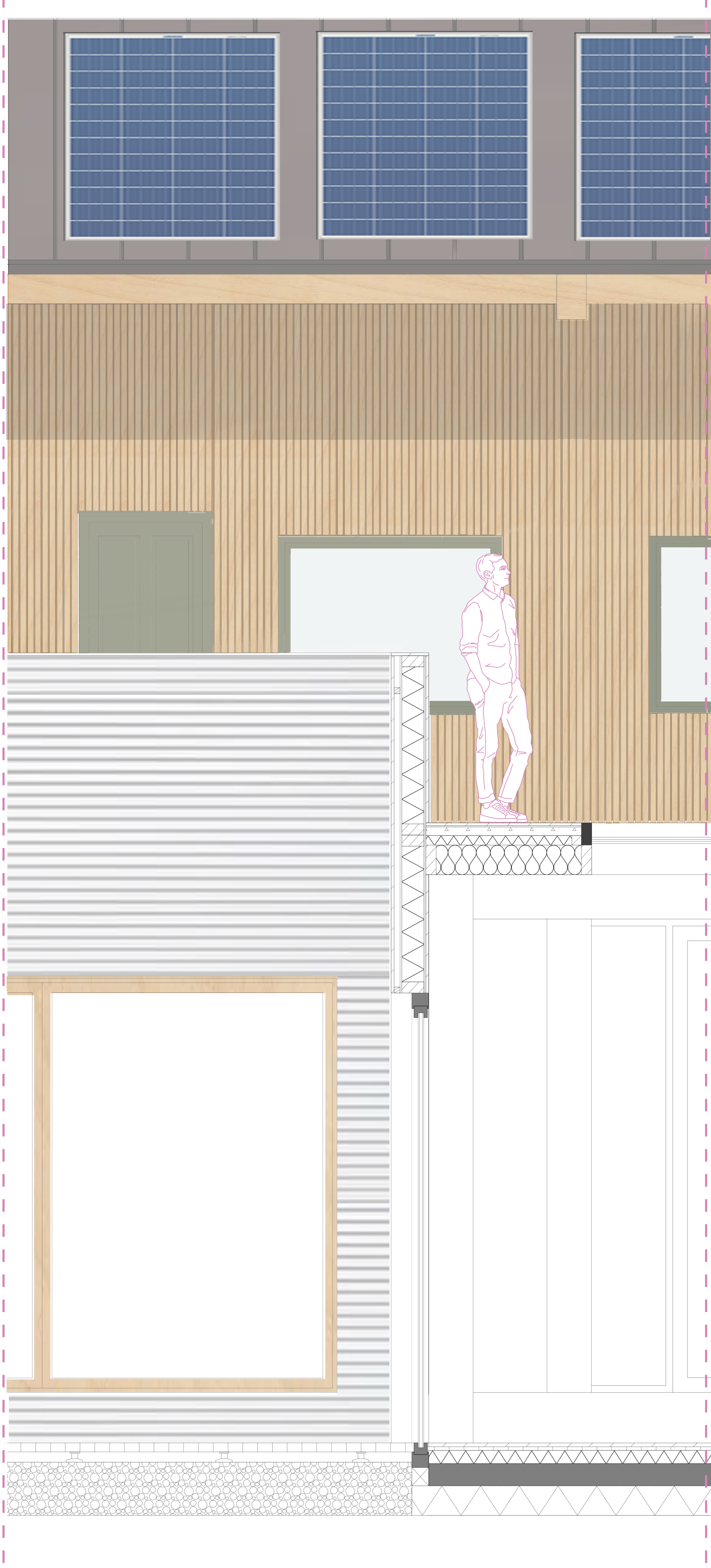
Type C: Big Apartments (1:50)



52 m2  
 1+1  
 Designed for 2  
 fully equipped kitchen  
 Big living room

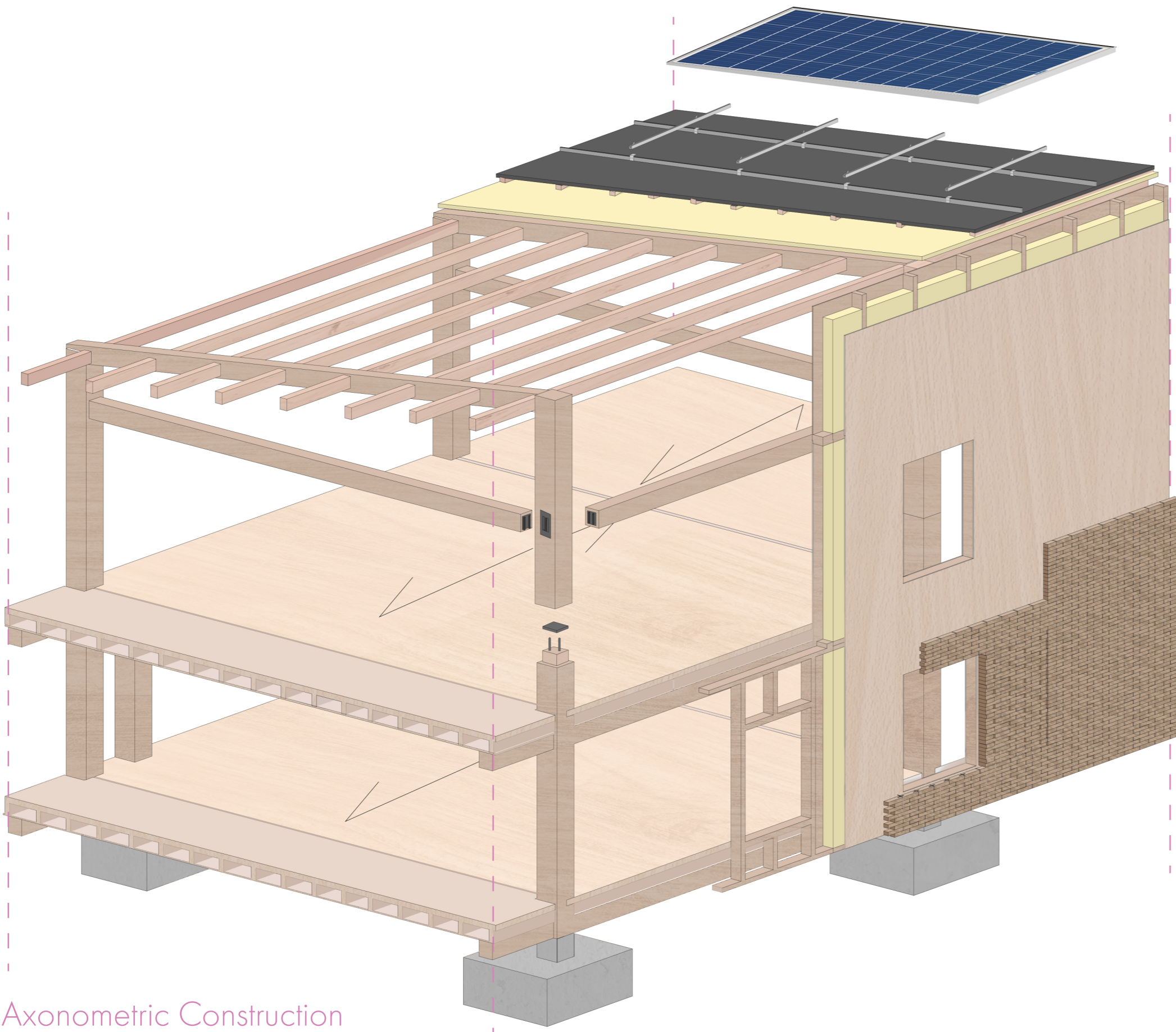


Type D: Couple Apartments (1:50)

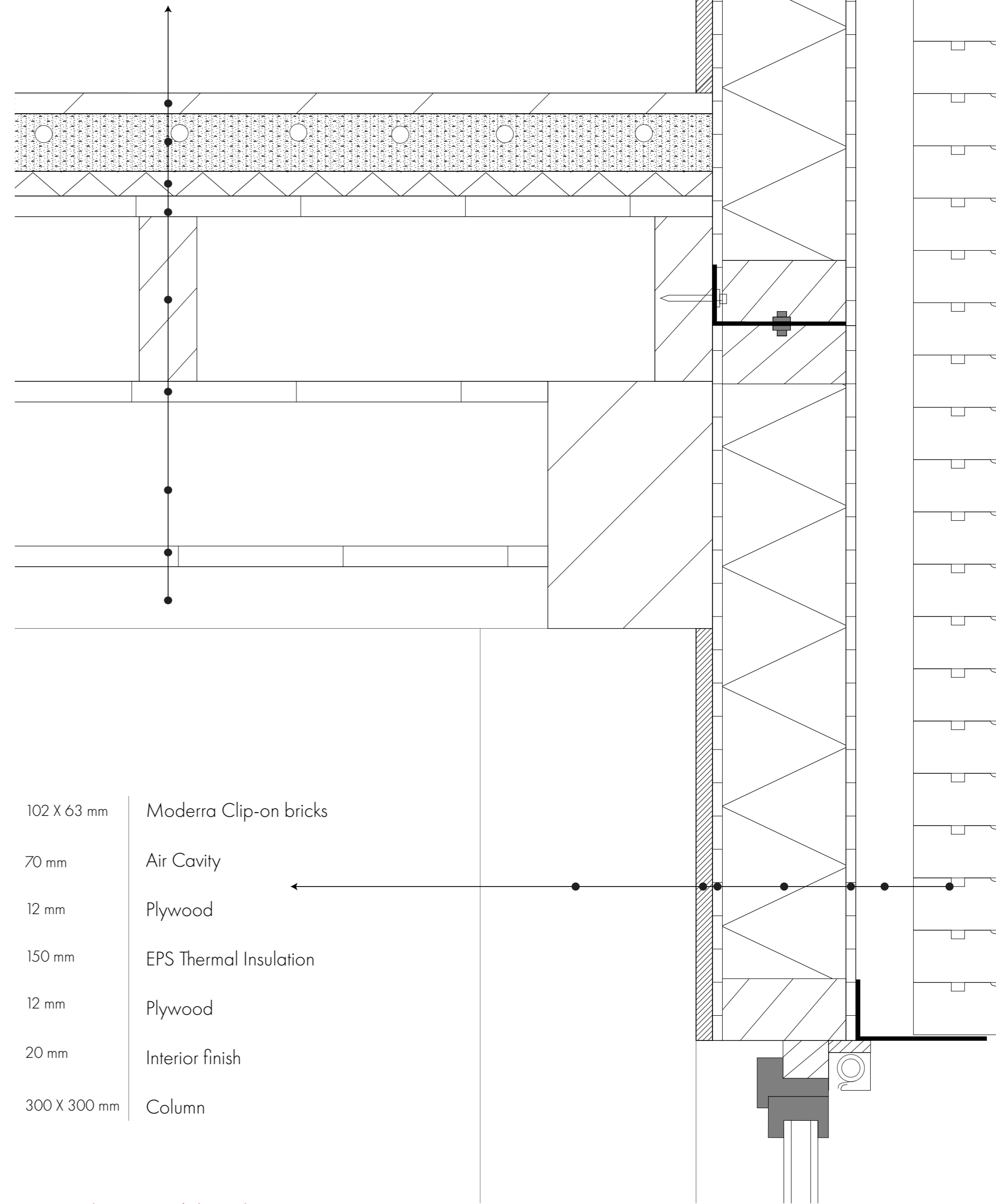


Segment Drawing (1:20)

Disassembly System

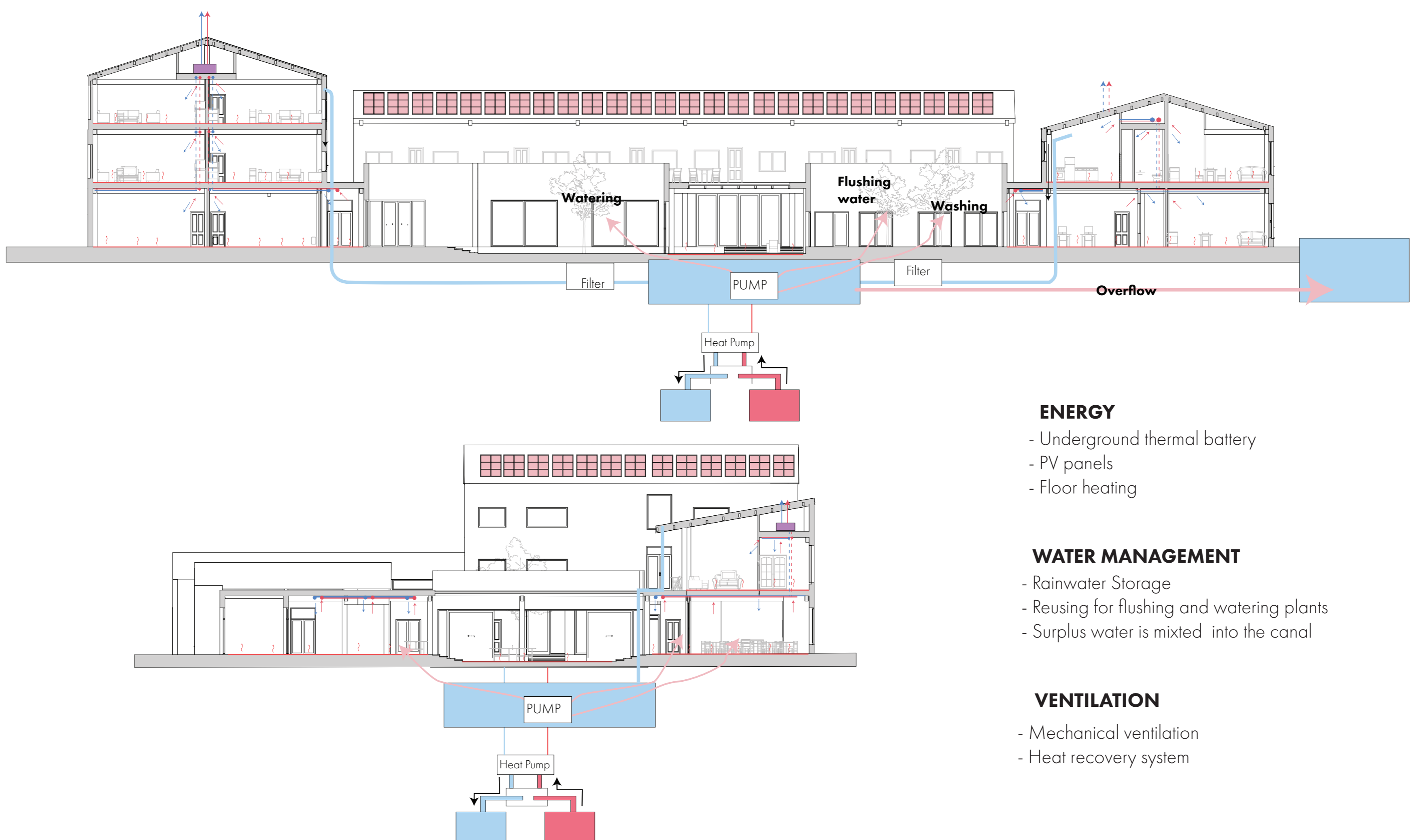


- 20 mm Floor covering
- 50 mm Anhydride screed, separating layer with floor heating
- 30 mm Sound insulation
- 200 mm Glued laminated timber ribs
- 27 mm Ply sheeting
- 175 mm Suspended ceiling
- 20 mm Plywood cover
- 300 X 200 mm Beam



- 102 X 63 mm Moderra Clip-on bricks
- 70 mm Air Cavity
- 12 mm Plywood
- 150 mm EPS Thermal Insulation
- 12 mm Plywood
- 20 mm Interior finish
- 300 X 300 mm Column

Climate Diagram

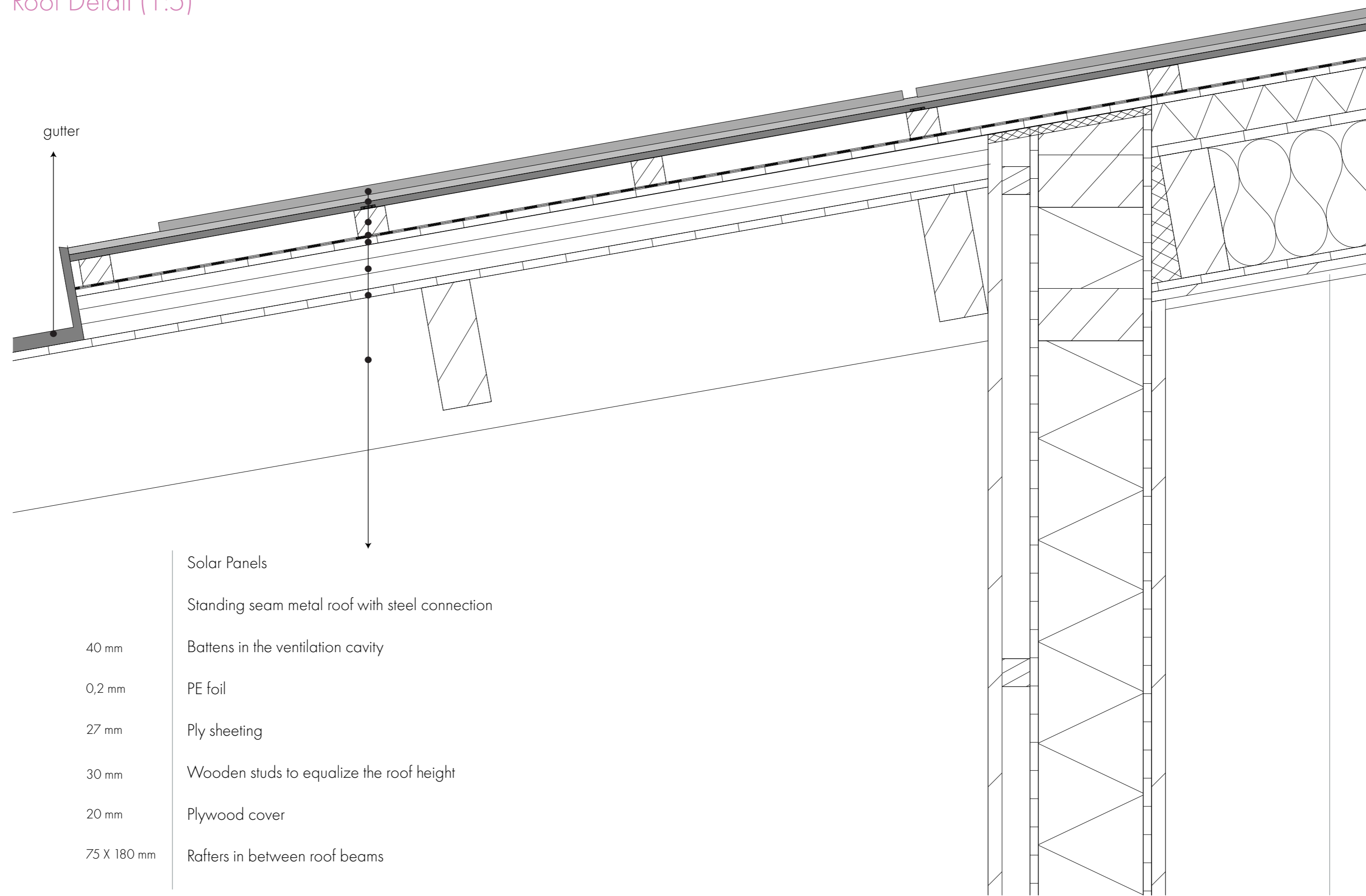


- ENERGY**
- Underground thermal battery
  - PV panels
  - Floor heating

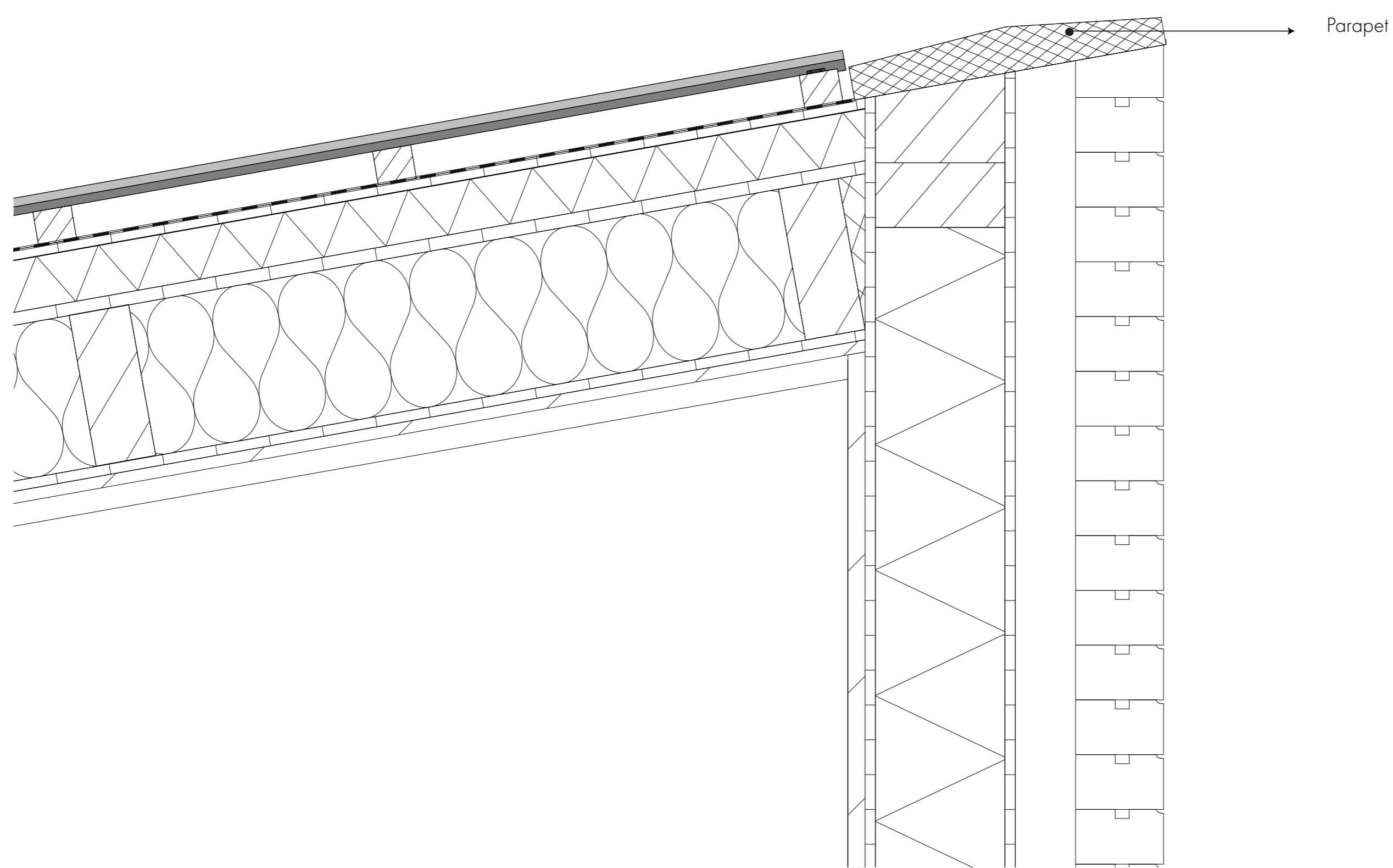
- WATER MANAGEMENT**
- Rainwater Storage
  - Reusing for flushing and watering plants
  - Surplus water is mixed into the canal

- VENTILATION**
- Mechanical ventilation
  - Heat recovery system

Roof Detail (1:5)



Roof Detail from the Brick Facade (1:5)



Door Frame Detail (1:5)

