

Charging Electric Vehicles from Solar Energy Integrated Converter and Charging Algorithms

Chandra Mouli, Gautham Ram; Van Der Meer, Dennis; Bauer, Pavol; Zeman, Miro; Schijffelen, Jos H.; van den Heuvel, Mike; Kardolus, Menno

Publication date
2017

Citation (APA)

Chandra Mouli, G. R., Van Der Meer, D., Bauer, P., Zeman, M., Schijffelen, J. H., van den Heuvel, M., & Kardolus, M. (2017). *Charging Electric Vehicles from Solar Energy: Integrated Converter and Charging Algorithms*. 1-2. Abstract from Energy-Open 2017, Enschede, Netherlands.

Important note

To cite this publication, please use the final published version (if applicable).
Please check the document version above.

Copyright

Other than for strictly personal use, it is not permitted to download, forward or distribute the text or part of it, without the consent of the author(s) and/or copyright holder(s), unless the work is under an open content license such as Creative Commons.

Takedown policy

Please contact us and provide details if you believe this document breaches copyrights.
We will remove access to the work immediately and investigate your claim.

Charging Electric Vehicles from Solar Energy: Integrated Converter and Charging Algorithms

Gautham Ram Chandra Mouli, Dennis van der Meer
Pavol Bauer, Miro Zeman
Dept. of Electrical Sustainable Energy
Delft University of Technology, Netherlands
P.Bauer@tudelft.nl

Jos Schijffelen, Mike van den Heuvel,
Menno Kardolus
Power Research Electronics BV
Breda, Netherlands
j.schijffelen@pr-electronics.nl

Keywords—Electric vehicles, PV system, EV charging, silicon carbide, smart charging, solar energy, MILP

I. INTRODUCTION

500 million electric vehicles (EVs) are expected to be on the roads by 2030 [1]. At the same time, the current electricity grid is largely powered by fossil fuels. When electric vehicles are charged from this grid, a large part of the emissions is merely moved from the vehicle to the power plant. Hence electric vehicles are only sustainable when charged from sustainable sources of electricity like solar [2]–[4]. There are several advantages for charging EVs from PV:

1. Reduced demand on the grid as the EV charging power is locally generated from PV [5]
2. EV battery can be used as an energy storage for the PV
3. Long parking time of EV paves way for implementing Vehicle-to-grid (V2G) technology
4. Reduced cost of EV charging and reduced impact of changes in feed-in-tariffs [6]

Currently, to charge EVs from PV is to use a PV inverter to feed PV power to the grid and to use an AC EV charger to charge the EV [7]. However this is not cost effective and efficient due to two reasons:

1. PV and EV are fundamentally DC by nature, hence exchanging power in AC leads to additional conversion steps and losses [4][3].
2. Two inverters would be needed, one each for the PV, EV

The paper presents the development of a highly efficient, modular, V2G-enabled smart charging station for electric vehicles that is powered by solar energy. The EV and PV are connected on DC rather than AC and uses a single inverter to AC. The paper focusses on the system design, power converter development and charging algorithms. The charging station is designed for use in workplaces to charge electric cars of the employees as they are parked during the day. Industrial sites and office buildings harbor a great potential for photovoltaic (PV) panels with their large, flat roofs.

II. SYSTEM DESIGN

Research has shown that there is sufficient solar insolation to charge EVs from a PV array in Netherlands [5]. Simulations based on data from the Dutch Meteorological Institute (KNMI) have shown that a 10kW PV array produces on average 30kWh/day, with 10kWh/day in winter and 50kWh/day in



Fig. 1. Design of solar powered bi-directional EV charging station

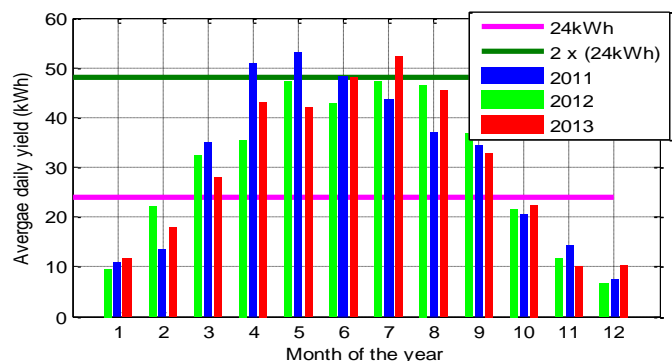


Fig. 2. Yield of 10kW PV system in Netherlands compared to Nissan Leaf EV

summer. This necessitates a grid connection to ensure reliable power supply, especially in winter. For 54% and 22% of the year, the daily yield is greater than 24kWh/day and 48kWh/day respectively (Fig. 2). 24kWh considered here corresponds to the battery capacity of a Nissan Leaf EV. The use of a local storage or a PV tracking system does not help in overcoming the seasonal variations in irradiance. However small sized storage of 10kWh helped in mitigating the day-day solar variations and reduced the grid energy exchange by 25%.

III. 10KW BI-DIRECTIONAL THREE-PORT CONVERTER

The optimal system architecture for EV charging from PV is an integrated three-port converter connected to the AC grid, as shown in Fig. 3 [8]. It has three sub-converters: a DC-DC converter for PV, a DC-DC isolated converter for EV and a DC-AC inverter to connect to the AC grid.

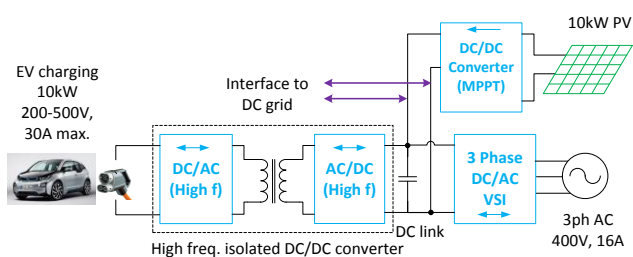


Fig. 3. Topology of power converter (top) and 10kW prototype of developed converter compared to a conventional PV inverter and EV charger (bottom)

A high-efficiency 10kW three-port converter has been designed and built that integrates the PV, EV and grid [8]–[10], shown in Fig. 3. An internal DC-link is used to exchange power between the PV and EV. The use of modern silicon carbide devices and low-loss powdered alloy core inductors has resulted in high efficiency and high power density. Fig. 3 shows a comparison of the developed converter with a 10kW PV inverter and DC EV charger based on ferrites and classic IGBT technology. The smaller size and higher power density are clearly seen.

The bidirectional power converter has V2G capability to discharge the EV battery to provide power to the grid. The converter is compatible with Chademo and CCS/combo DC EV charging standards. The converter has a stable closed loop control. The control is capable of executing four different power flows: PV→EV, PV→ Grid, Grid→ EV, EV→Grid and its combinations. The efficiency of the converter for charging EV and feeding PV power to the grid is shown in Fig. 4. The efficiency is compared with a conventional EV charger and the improved full load and partial load efficiency can be observed

IV. EV-PV SMART CHARGING

An energy management system (EMS) is used to optimally charge the EV fleet from PV and the grid. The aim is to minimize charging cost while reducing the energy demand from the grid by increasing PV self-consumption. The developed EMS consists of two components: an autoregressive integrated moving average (ARIMA) model to predict PV power production and a mixed-integer linear programming (MILP) formulation that optimally allocates power to minimize charging cost [11].

The charging of the EV fleet is optimized based on EV user preferences, PV forecast and dynamic energy prices in the grid. The results show that the developed EMS is able to reduce the charging cost significantly, while increasing PV self-

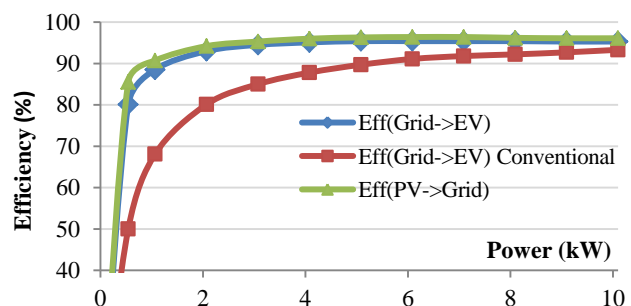


Fig. 4. Measured efficiency of the converter for PV→Grid, EV→Grid

consumption and reducing the energy consumption from the grid. For a case study with dynamic purchase and feed-in tariff (FIT), the EMS reduces charging cost by 118.44% and 427.45% in case of one and two charging points, respectively, when compared to an uncontrolled charging policy [11].

ACKNOWLEDGEMENTS

The authors would like to acknowledge ABB, Rijswijk; Prof. R. Baldick from UT Austin; G. Morales, L. Ramirez and M. Leendertse from TU Delft. The work was sponsored by TKI switch2smart grids grant and Partners in International Business(PIB) initiative of Netherlands.

REFERENCES

- [1] "Global EV Outlook 2016," *Int. Energy Agency*, p. 52, 2016.
- [2] D. P. Birnie, "Solar-to-vehicle (S2V) systems for powering commuters of the future," *J. Power Sources*, vol. 186, no. 2, pp. 539–542, Jan. 2009.
- [3] C. Hamilton, G. Gamboa, J. Elmes, R. Kerley, A. Arias, M. Pepper, J. Shen, and I. Batarseh, "System architecture of a modular direct-DC PV charging station for plug-in electric vehicles," in *IECON 2010 - 36th Annual Conference on IEEE Industrial Electronics Society*, 2010, pp. 2516–2520.
- [4] G. Carli and S. S. Williamson, "Technical Considerations on Power Conversion for Electric and Plug-in Hybrid Electric Vehicle Battery Charging in Photovoltaic Installations," *IEEE Trans. Power Electron.*, vol. 28, no. 12, pp. 5784–5792, Dec. 2013.
- [5] G. R. Chandra Mouli, P. Bauer, and M. Zeman, "System design for a solar powered electric vehicle charging station for workplaces," *Appl. Energy*, vol. 168, pp. 434–443, Apr. 2016.
- [6] G. R. C. Mouli, M. Leendertse, V. Prasanth, P. Bauer, S. Silvester, S. van de Geer, and M. Zeman, "Economic and CO2 Emission Benefits of a Solar Powered Electric Vehicle Charging Station for Workplaces in the Netherlands," in *2016 IEEE Transportation Electrification Conference and Expo (ITEC)*, 2016, pp. 1–7.
- [7] Y. Gurkaynak and A. Khaligh, "Control and Power Management of a Grid Connected Residential Photovoltaic System with Plug-in Hybrid Electric Vehicle (PHEV) Load," in *2009 Twenty-Fourth Annual IEEE Applied Power Electronics Conference and Exposition*, 2009, pp. 2086–2091.
- [8] G. R. Chandra Mouli, P. Bauer, and M. Zeman, "Comparison of system architecture and converter topology for a solar powered electric vehicle charging station," in *2015 9th International Conference on Power Electronics and ECCE Asia (ICPE-ECCE Asia)*, 2015, pp. 1908–1915.
- [9] "V2G500V30A - 10kW Bidirectional Solar EV Charger Module - Power Research Electronics B.V, Delft University of Technology."
- [10] G. R. Chandra Mouli, J. Schijffelen, P. Bauer, and M. Zeman, "Design and Comparison of a 10kW Interleaved Boost Converter for PV Application Using Si and SiC Devices," *IEEE J. Emerg. Sel. Top. Power Electron.*, pp. 1–1, 2016.
- [11] D. van der Meer, G. R. Chandra Mouli, G. Morales-Espana, L. Ramirez Elizondo, and P. Bauer, "Energy Management System with PV Power Forecast to Optimally Charge EVs at the Workplace," *IEEE Trans. Ind. Informatics*, pp. 1–1, 2016.