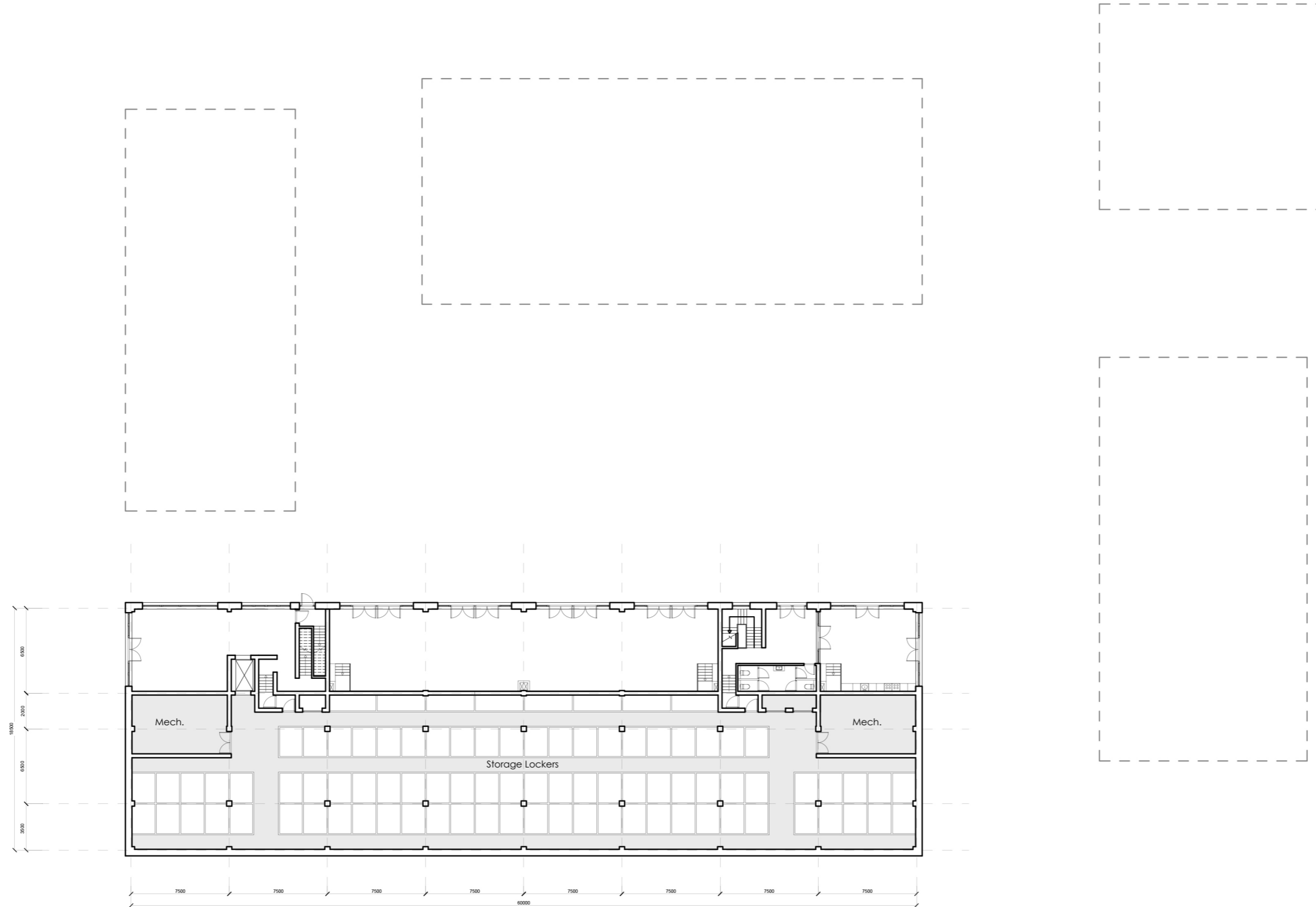
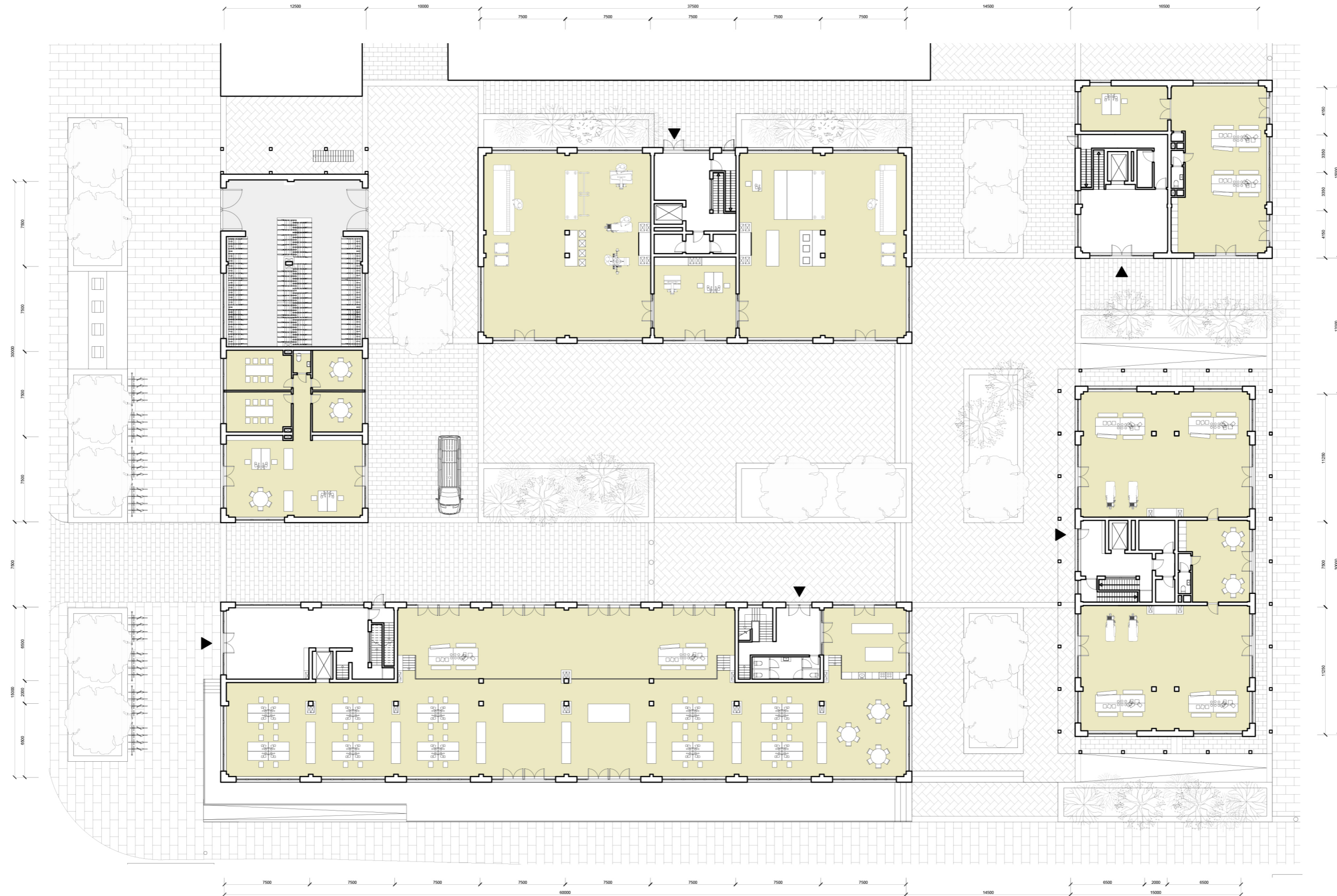


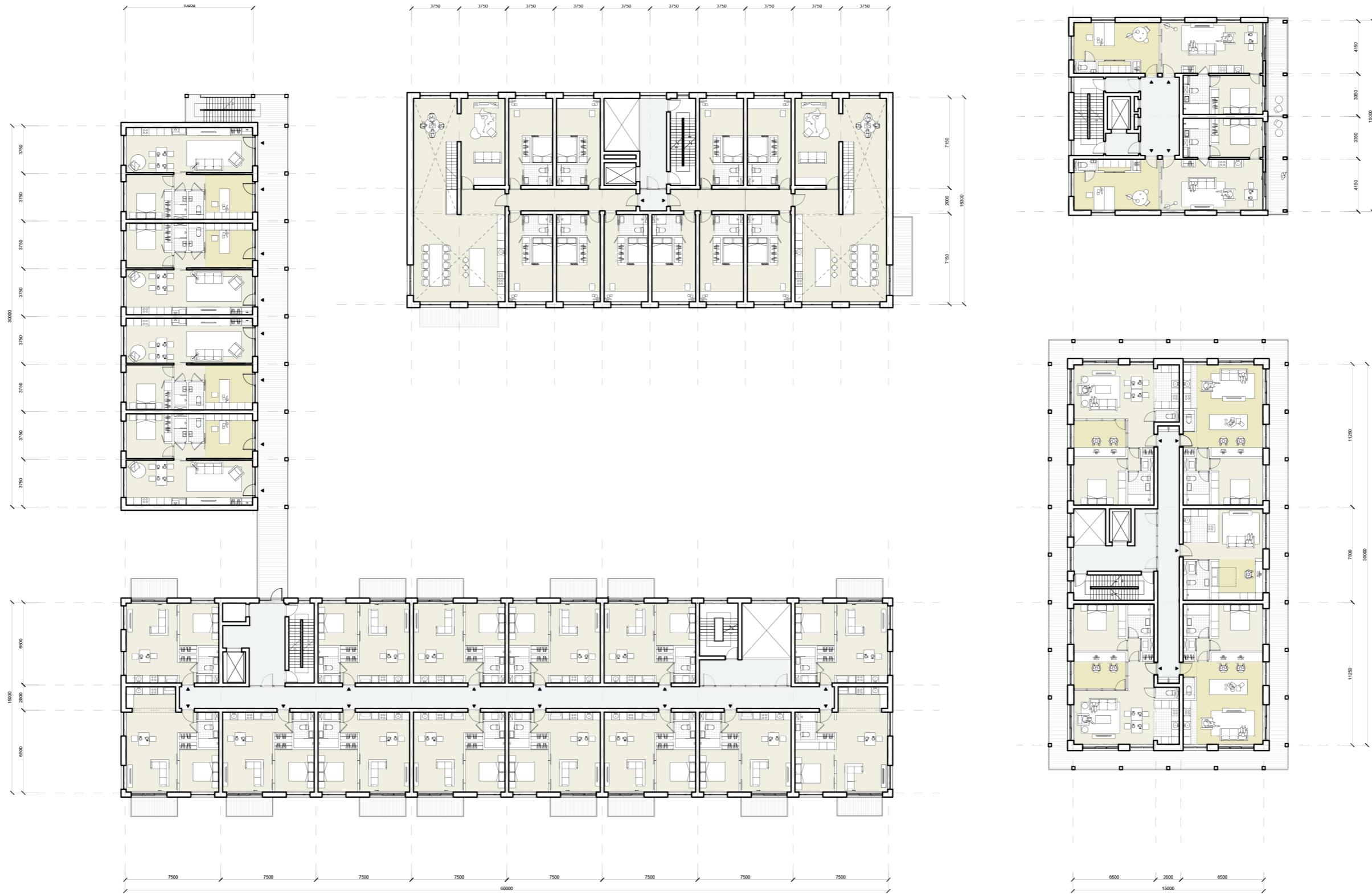
Site Plan
0m 5m 10m 15m 1:1000



Level -01
 0m 5m 10m 15m 1:300

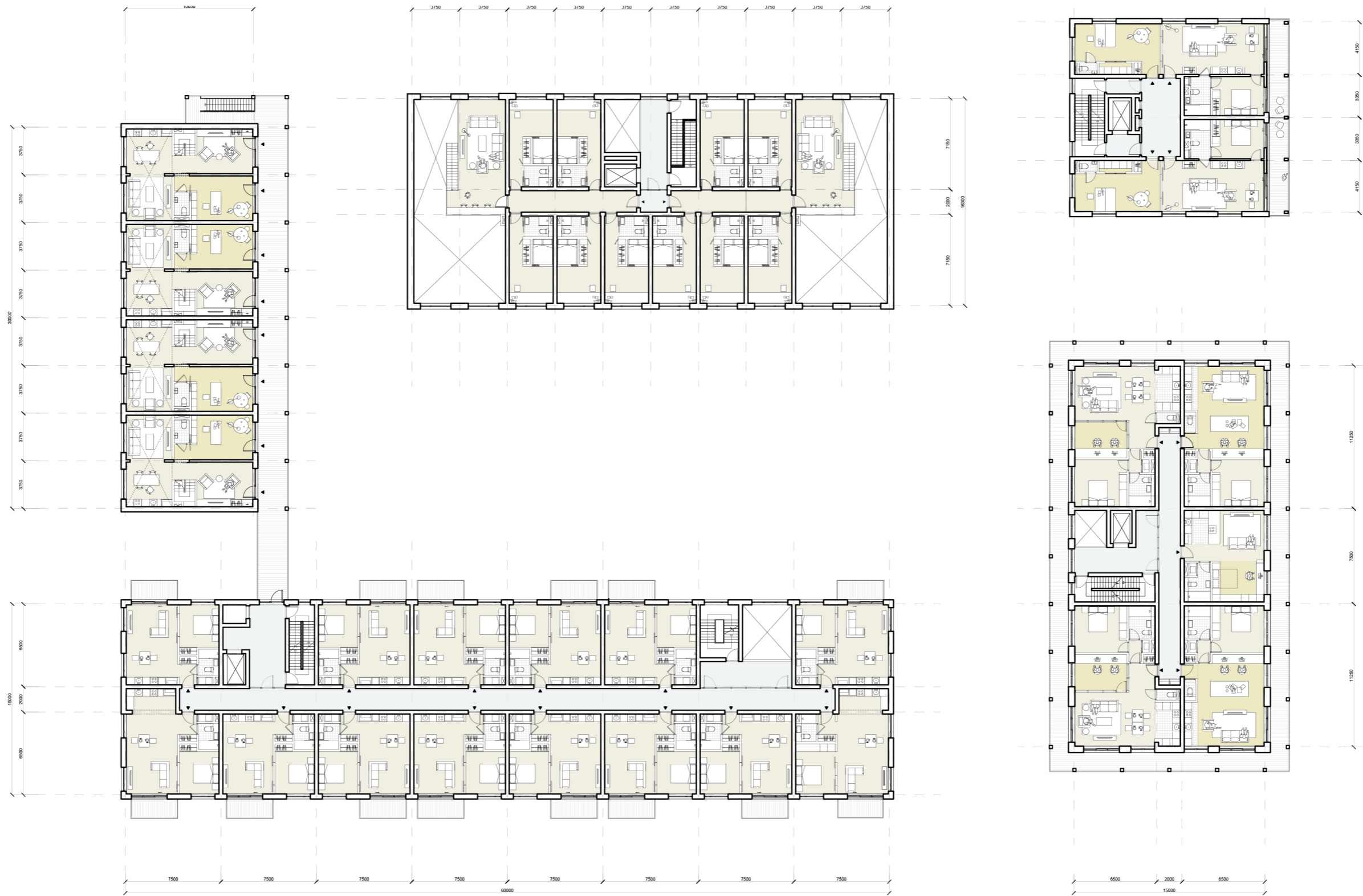


Ground Floor
 0m 5m 10m 15m 1:300



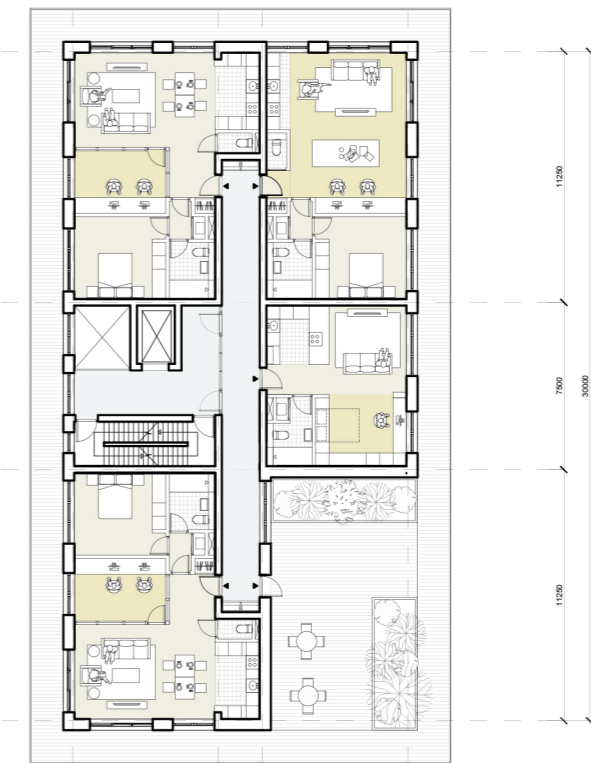
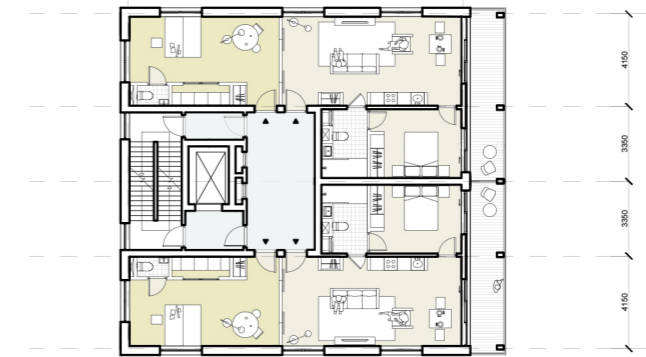
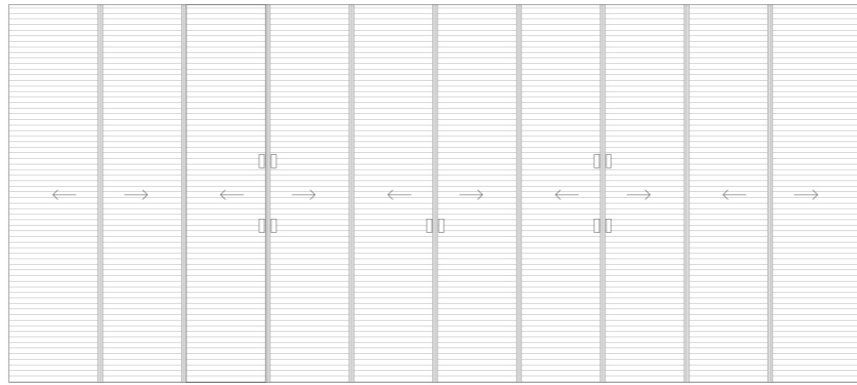
Level 01

0m 5m 10m 15m 1:300



Level 02

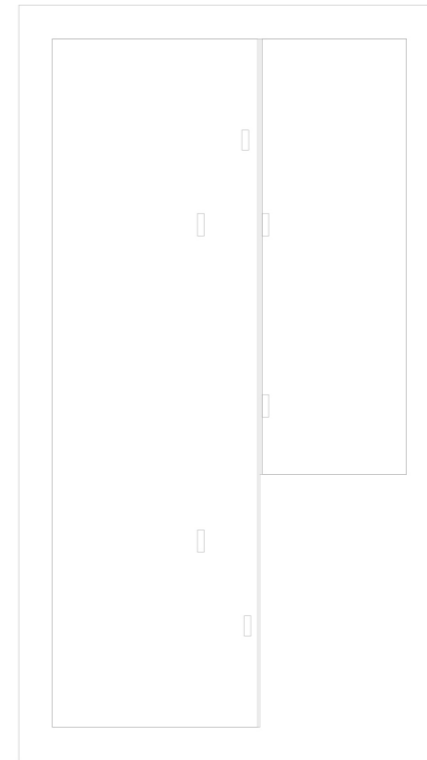
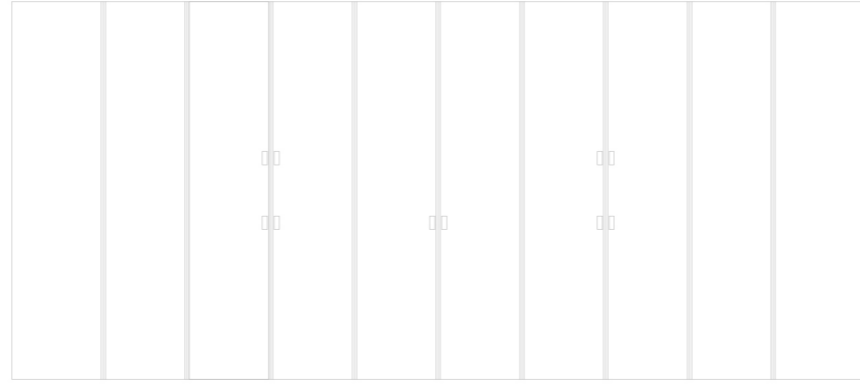
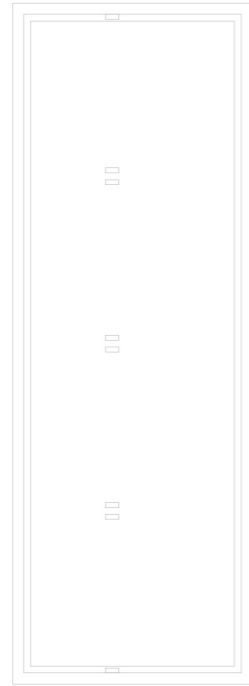
0m 5m 10m 15m 1:300



Level 03
 0m 5m 10m 15m 1:300

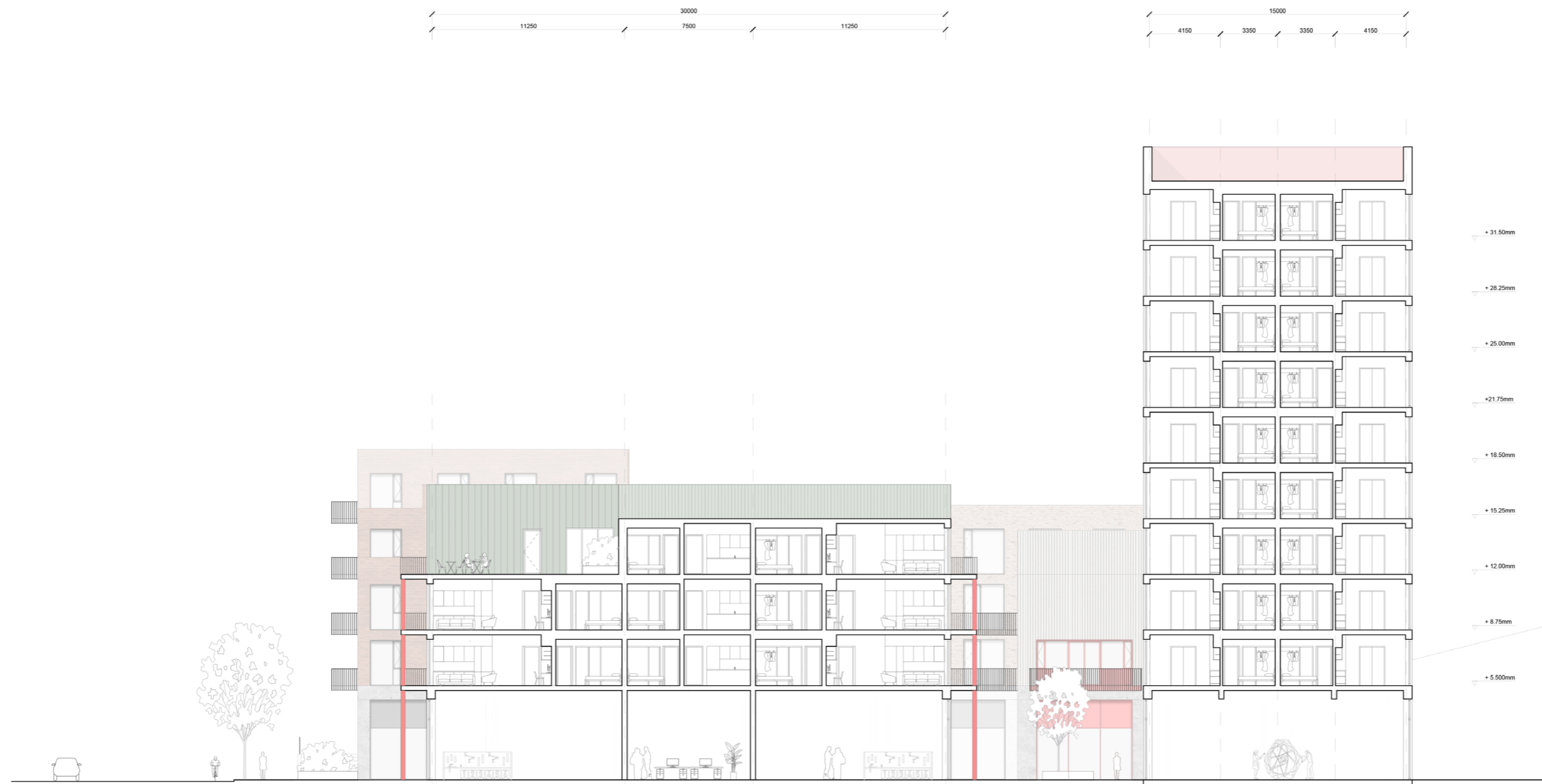


Level 04
 0m 5m 10m 15m 1:300



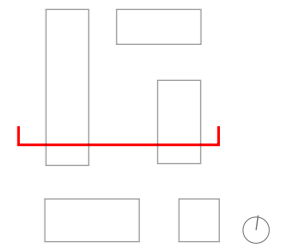
Level 05-9





Section A





- + 18.75m
- + 15.25m
- + 12.00m
- + 8.75m
- + 5.50m

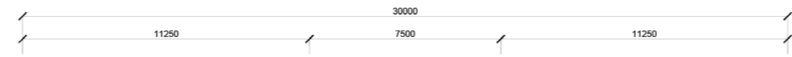
Section B
 0m 5m 10m 15m 1:300



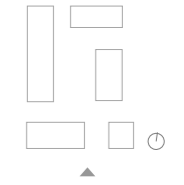
Section C
0m 5m 10m 15m 1:300



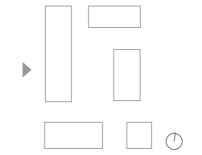
Section D
 0m 5m 10m 15m 1:300



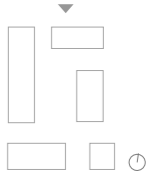
- ▽ + 38.25mm
- ▽ + 31.50mm
- ▽ + 28.25mm
- ▽ + 25.00mm
- ▽ + 21.75mm
- ▽ + 18.50mm
- ▽ + 15.25mm
- ▽ + 12.00mm
- ▽ + 8.75mm
- ▽ + 5.500mm



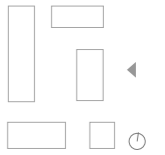
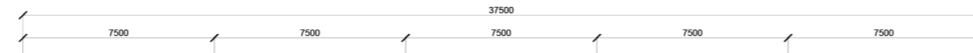
South Elevation
 0m 5m 10m 15m 1:300



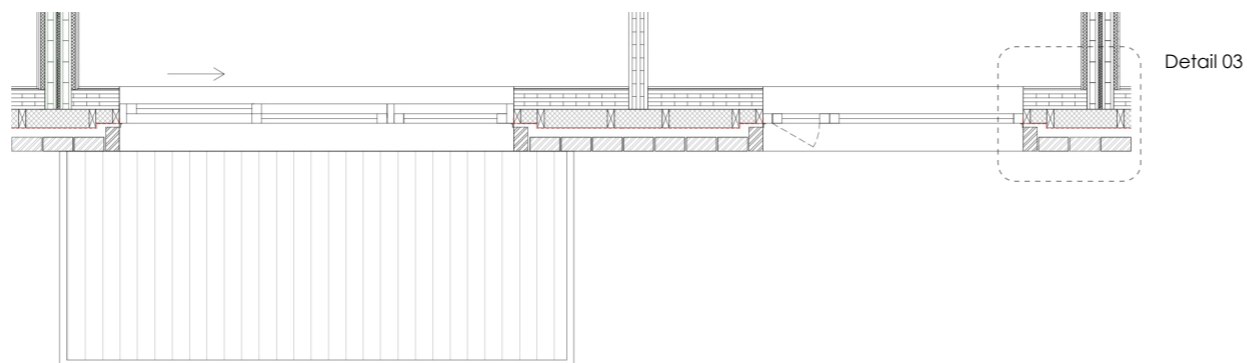
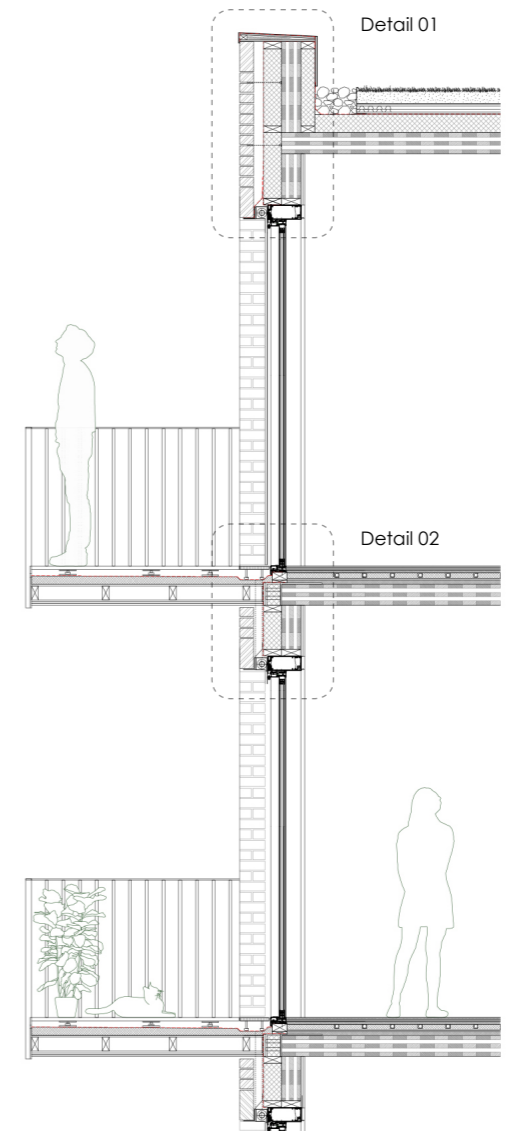
West Elevation
 0m 5m 10m 15m 1:300



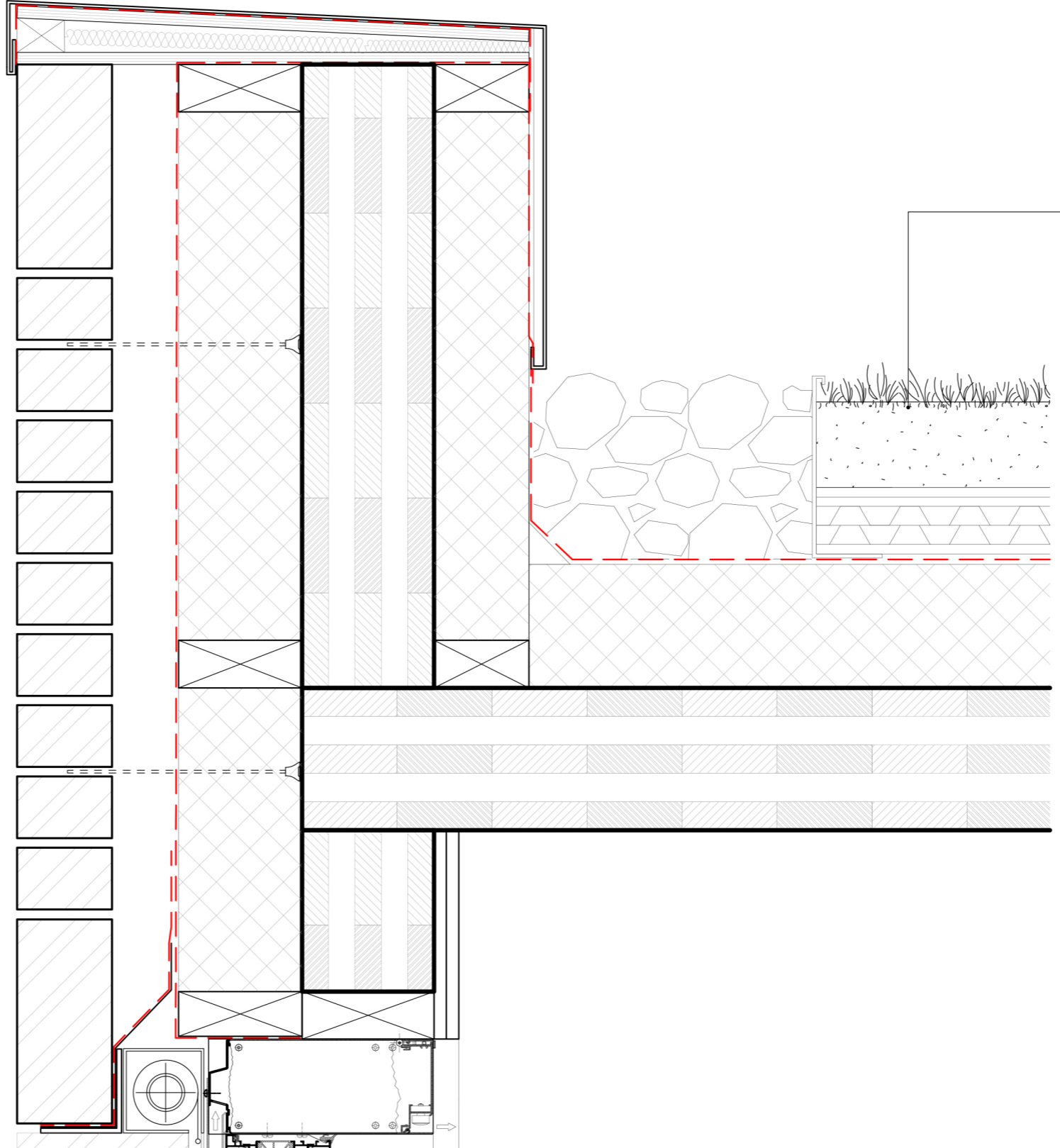
North Elevation
 0m 5m 10m 15m 1:300



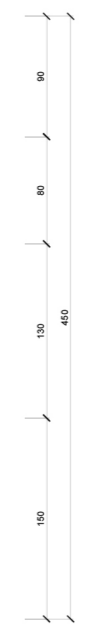
East Elevation
 0m 5m 10m 15m 1:300



Facade Fragment
 0m .5m 1m 2m 1:75



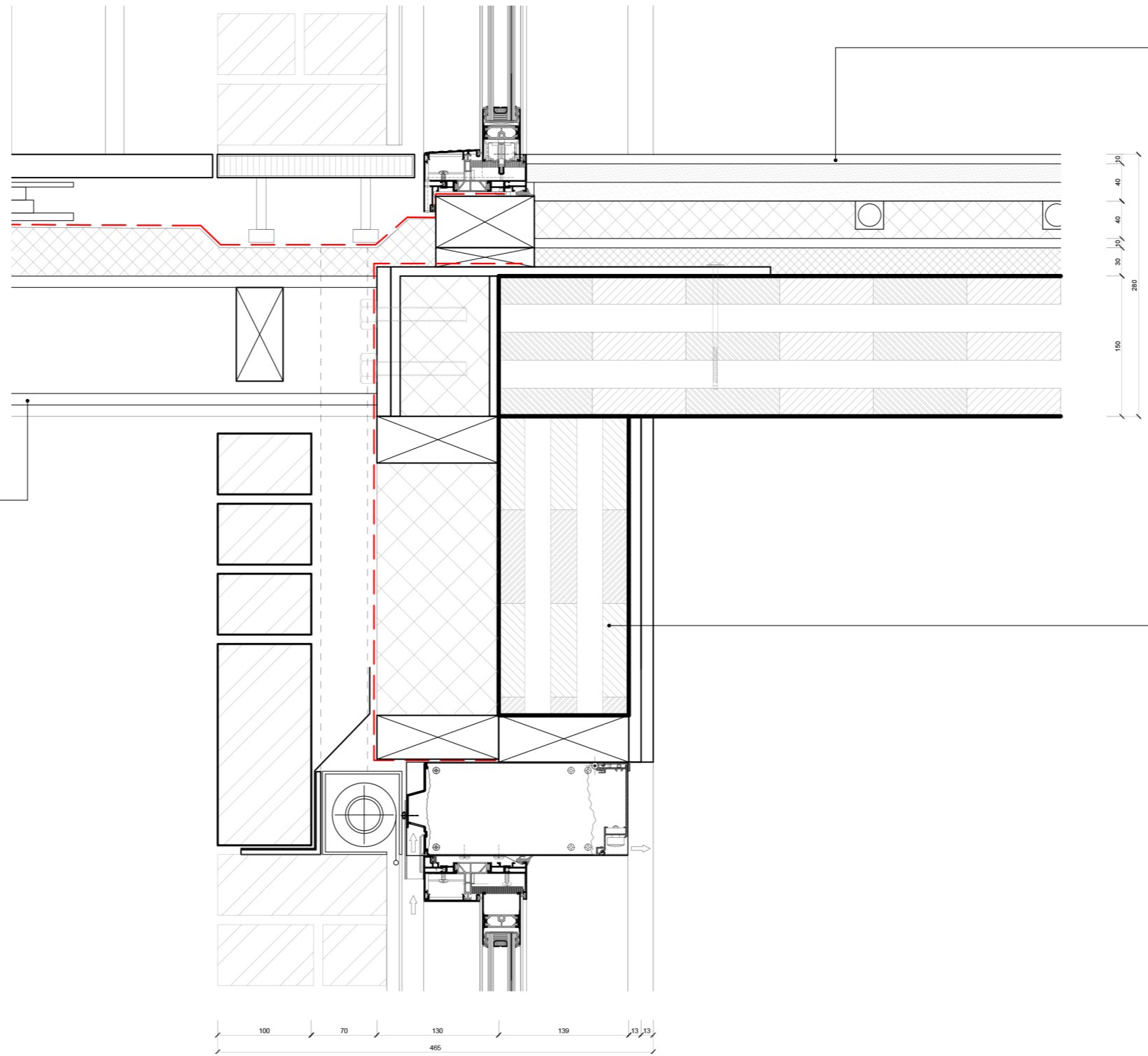
- Floor Structure**
- Vegetation
 - 90mm Substrate
 - Filtering Foil
 - 80mm Drainage and buffer system
 - EPDM Roofing
 - 140mm Rigid Insulation
 - 130mm CLT Floorslab



Parapet Detail



1:5



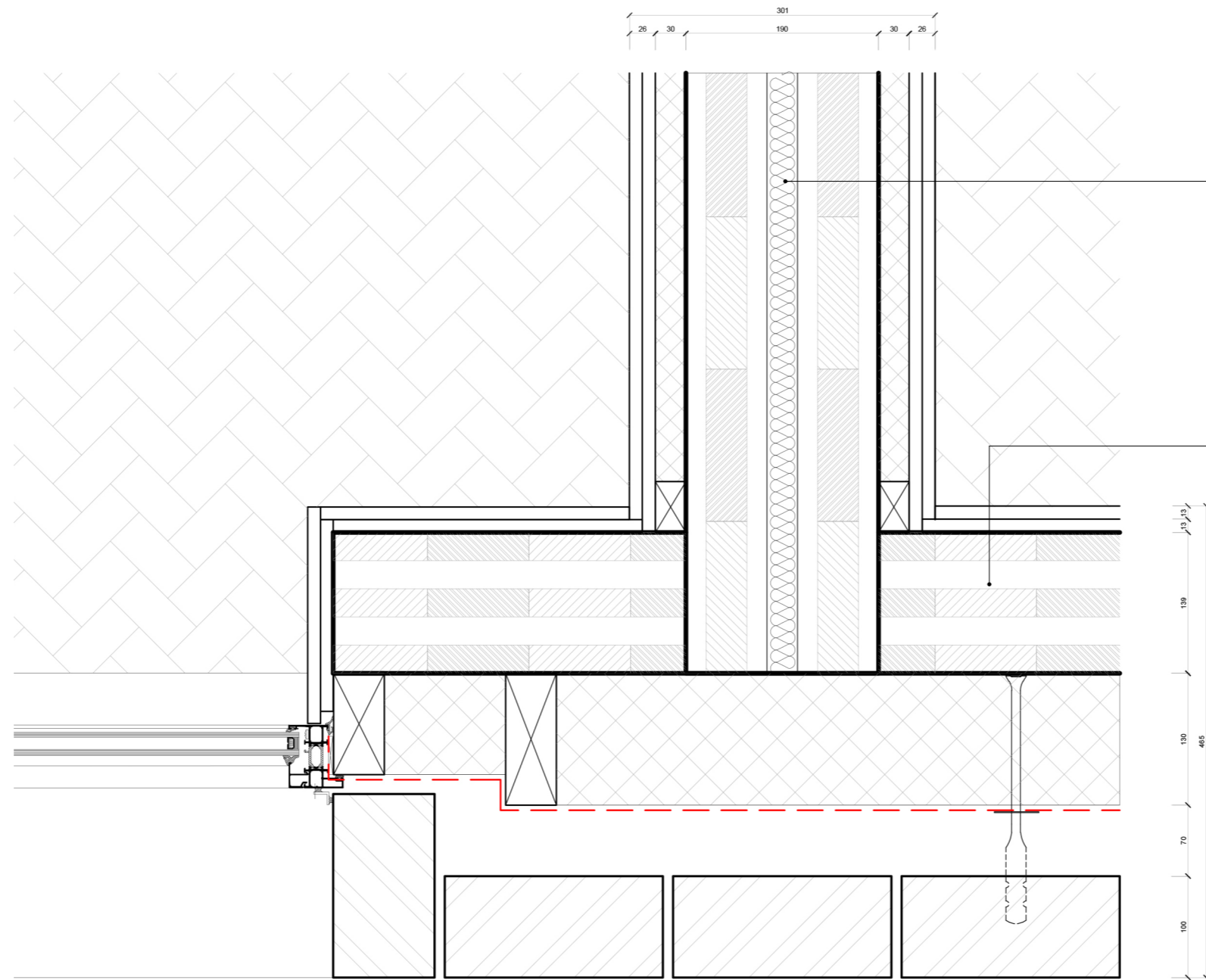
Floor Sturcture
 10 mm Floor covering
 45 mm Prefabricated floor screed element,
 Heat conductive panel sheet,
 40 mm Underfloor heating,
 15 mm Cover plate for load distribution,
 30mm Additional mass,
 Trickle protection
 150 mm CLT Load-bearing structure

Exterior Wall Sturcture
 100 mm Brick
 50 mm Air Cavity,
 DPC Waterproofing sheeet,
 100 mm Studwall with Rockwool thermal insulation,
 139 mm CLT Load-bearing structure
 12.5 mm Plasterboard,
 12.5 mm Plaster,
 Kawneer double glazed aluminium window

Balcony Structure
 25mm tiles on angled jacks @ 600mm centers
 DPC Waterproofing sheet,
 60mm Kooltherm K3 Insulation
 150mm steel T-beam fixed to Shoeck Isokorb

Balcony Detail
 0m 50mm 100mm 200mm

1:5



Interior Inter-Party Wall Structure

- 12.5 mm Plaster,
- 12.5 mm Plasterboard,
- 30 mm Sound Absortion Insulation
- 190 mm CLT panel (80mm CLT, 20mm Insulation, 80mm CLT)
- 30 mm Sound Absortion Insulation
- 12.5 mm Plasterboard,
- 12.5 mm Plaster,

Exterior Wall Structure

- 100 mm Brick
- 50 mm Air Cavity,
- DPC Waterproofing sheeet,
- 100 mm Studwall with Rockwool thermal insulation,
- 139 mm CLT Load-bearing structure
- 12.5 mm Plasterboard,
- 12.5 mm Plaster,
- Kawneer double glazed aluminium window

Window Jamb Detail



1:5