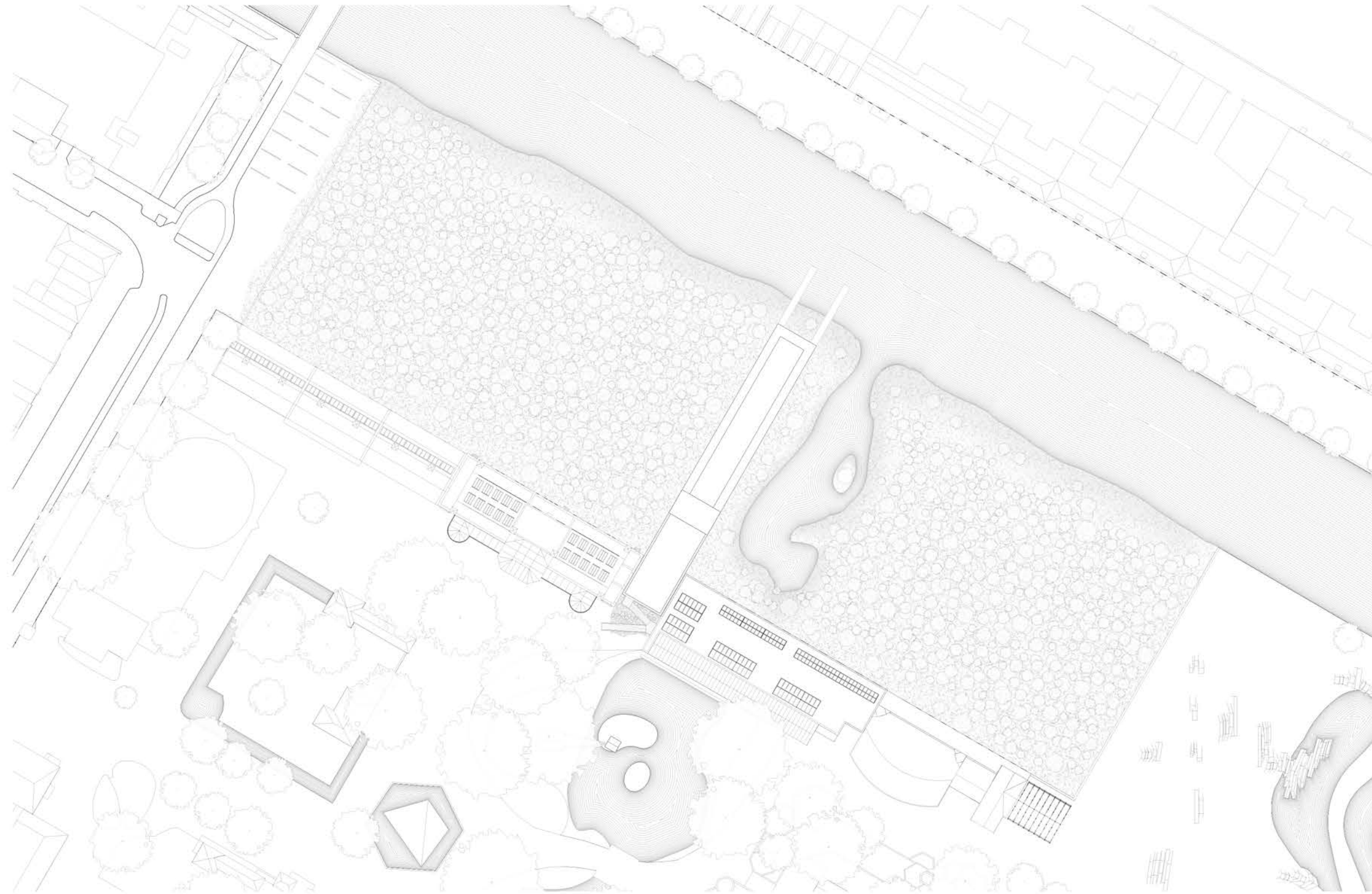


# Urban Forest Hotel Amsterdam

Stefan Heuvelman  
Interiors Buildings Cities  
Set of Drawings  
13 January 2022

Sam De Vocht  
Matthijs Klooster  
Daniel Rosbottom  
Mark Pimlott

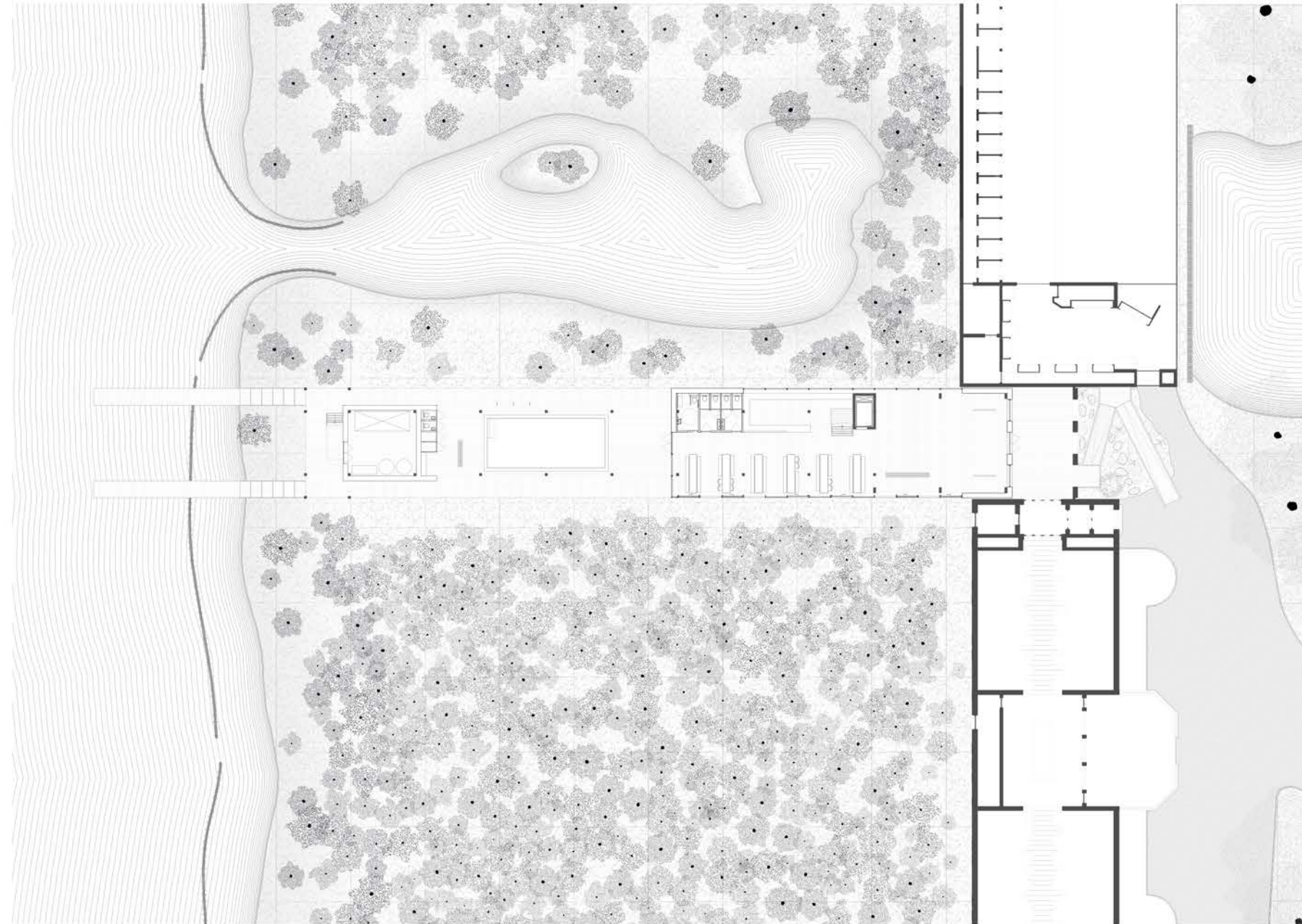
## Context



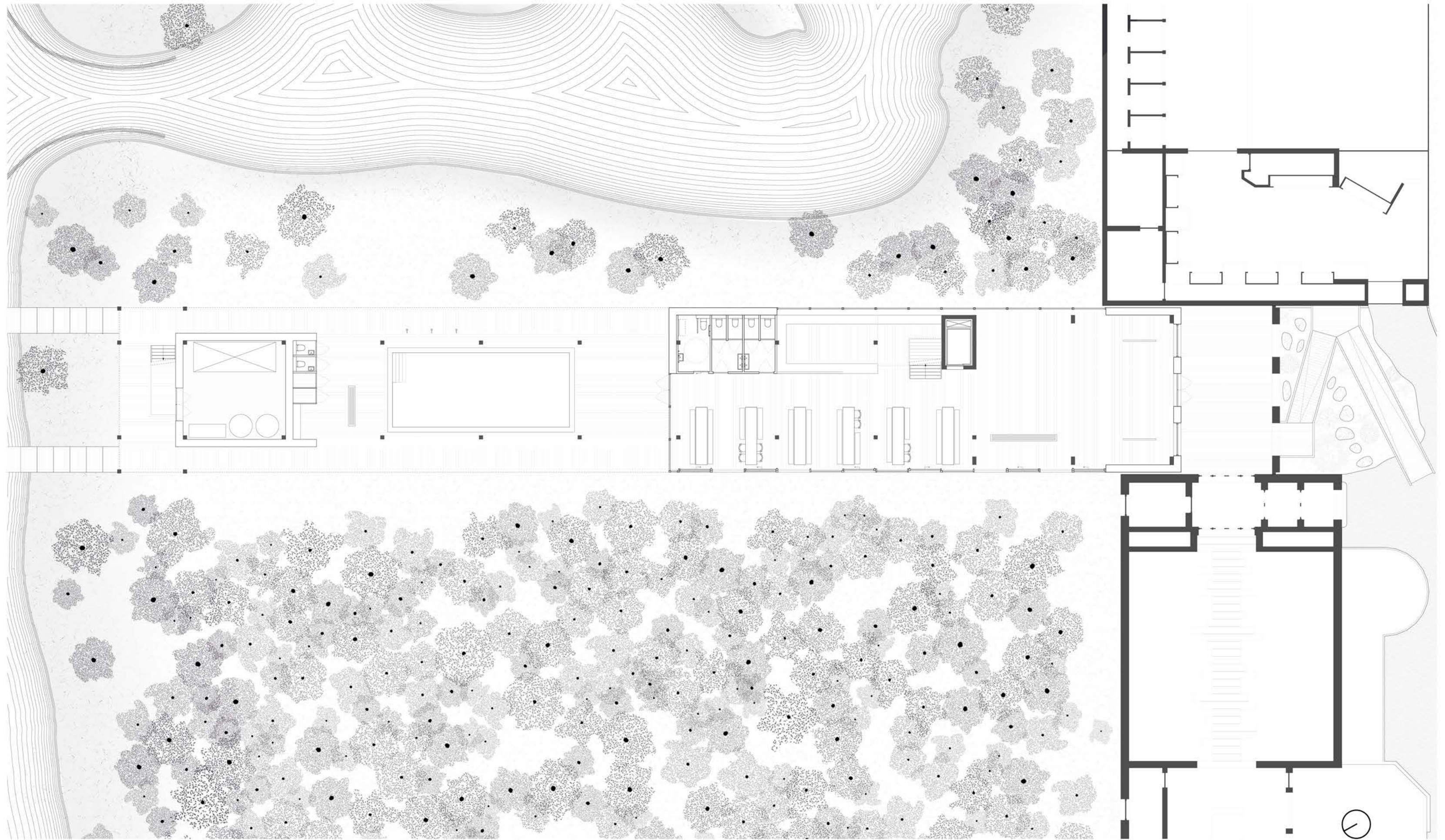
Elevation - Artis facade



Ground floor



Ground floor



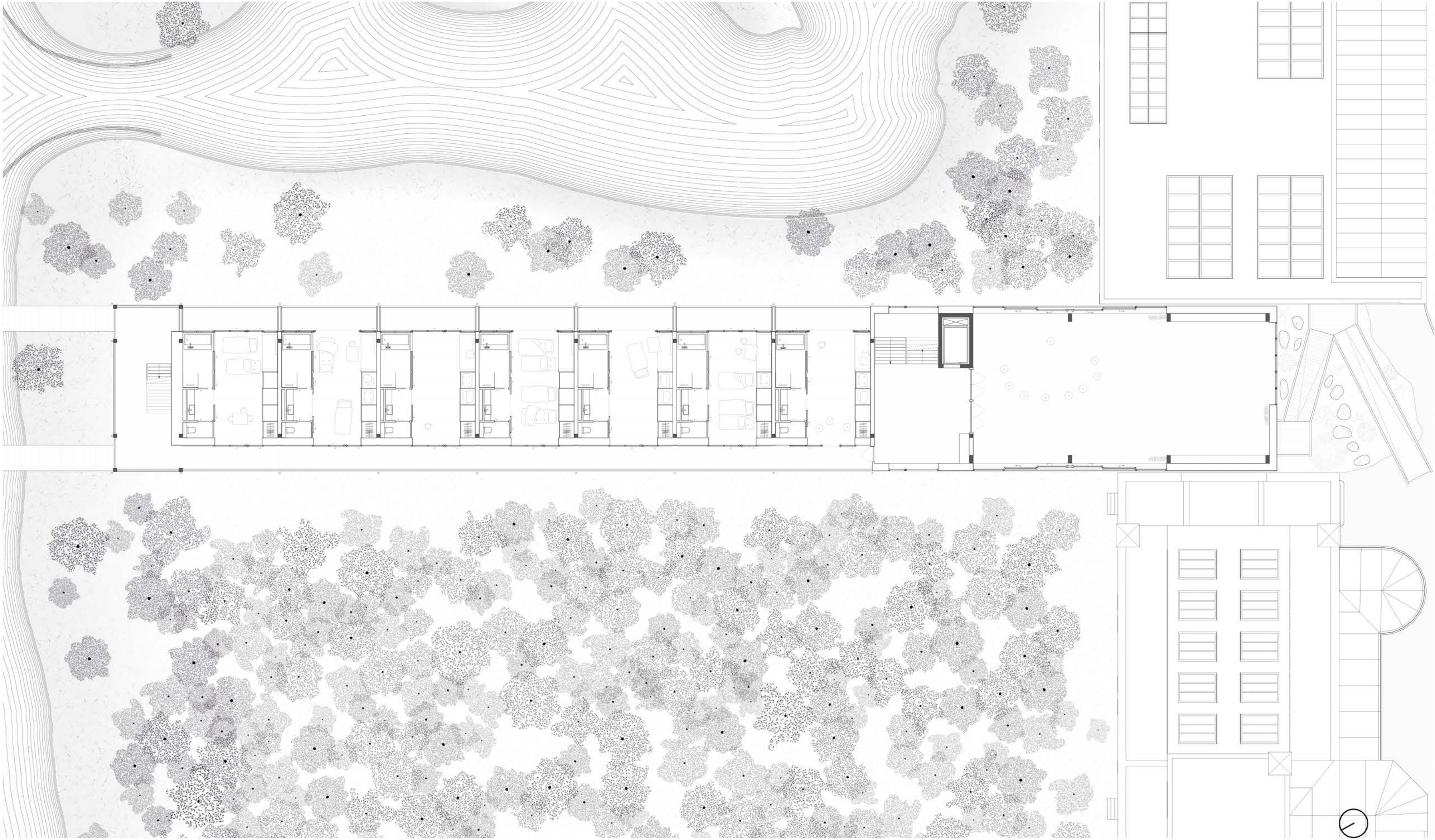
## Entrance space



# Pool



First floor





## Multifunctional space



# Room





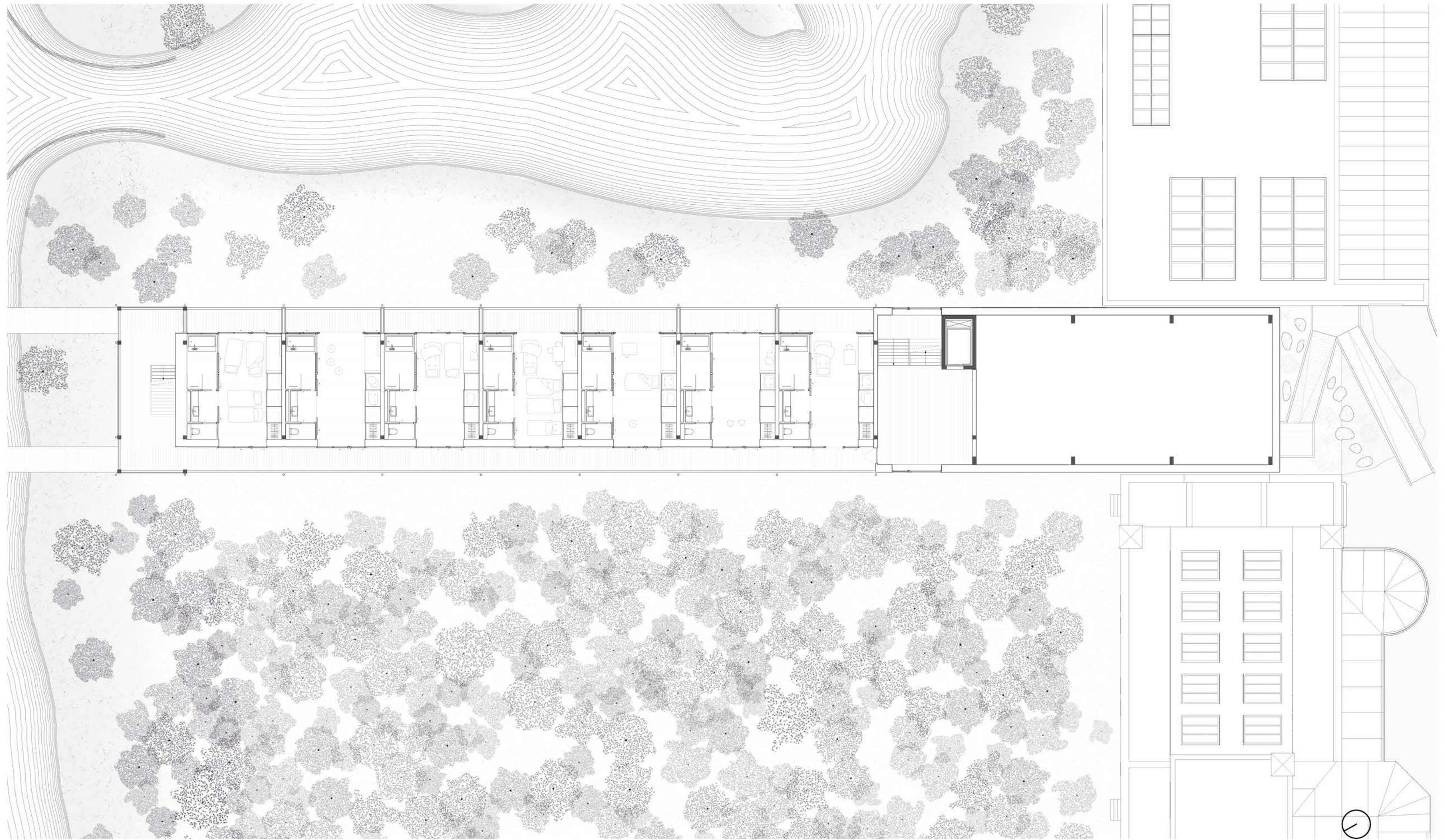


Night mode: futons laid out





Second floor

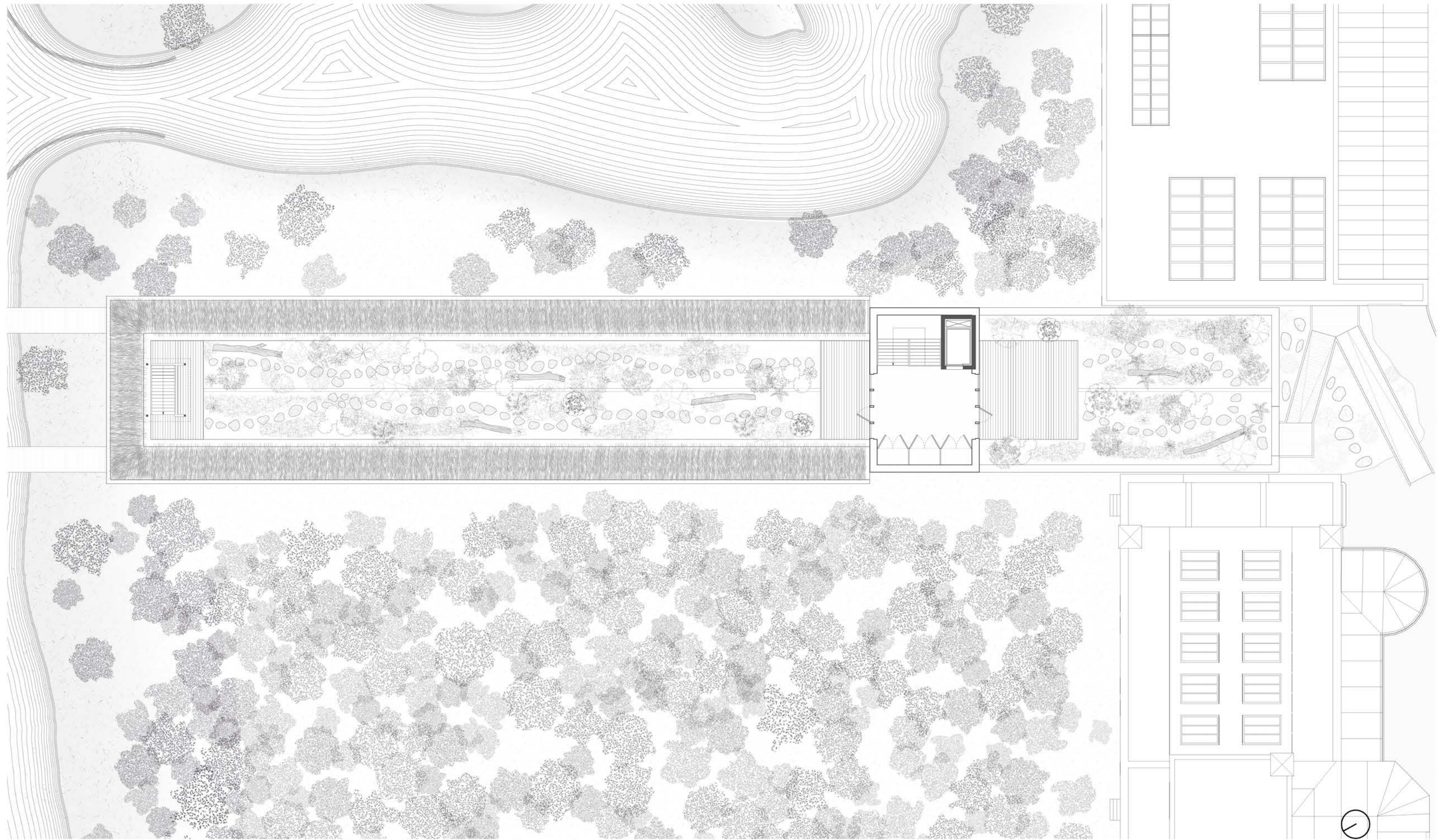


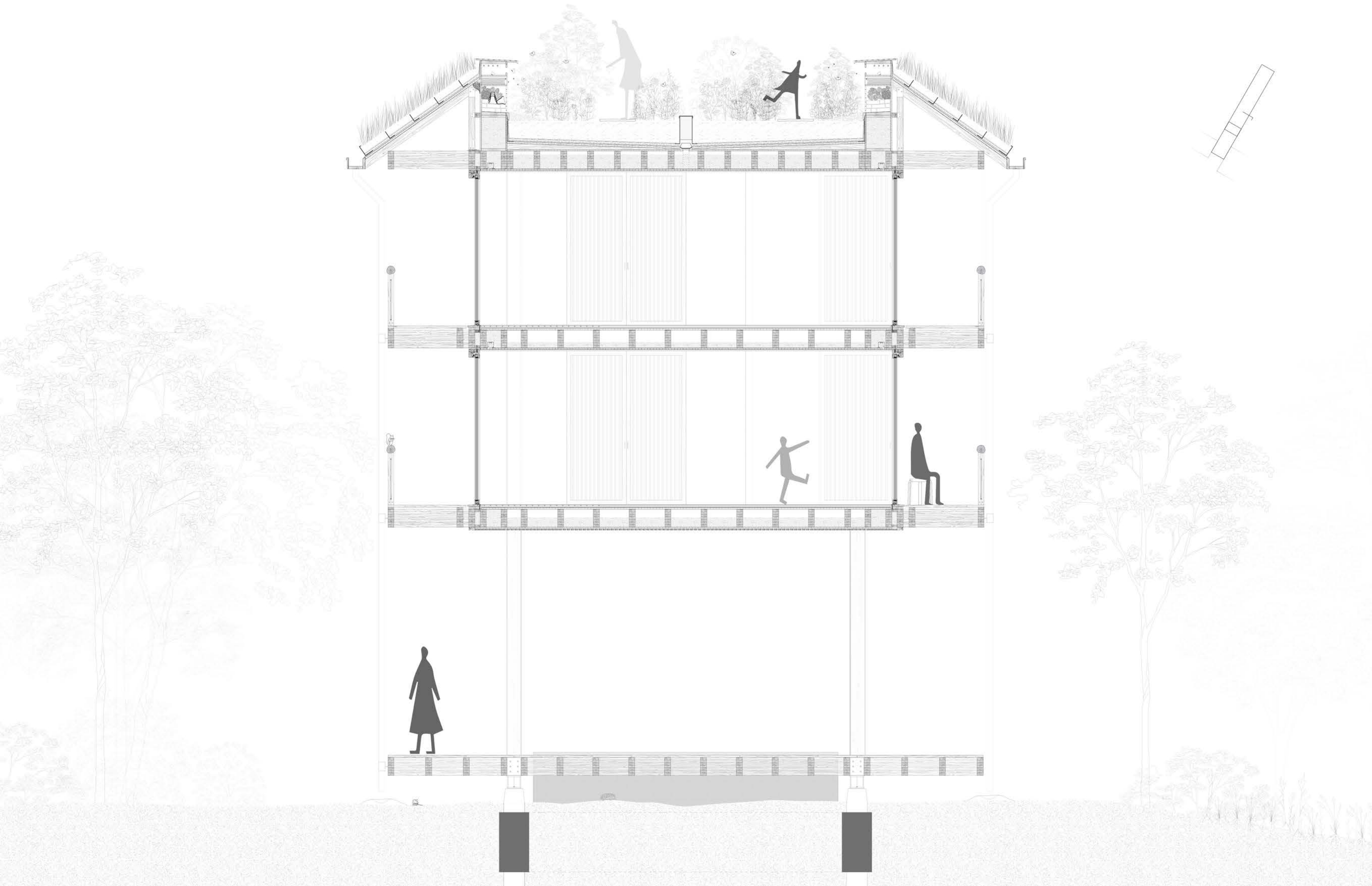
## Gallery



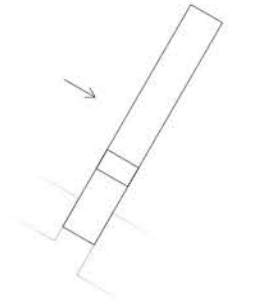


# Rooftop

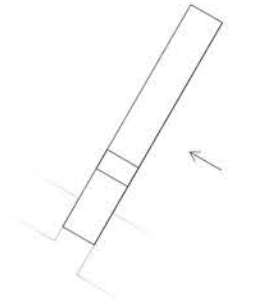




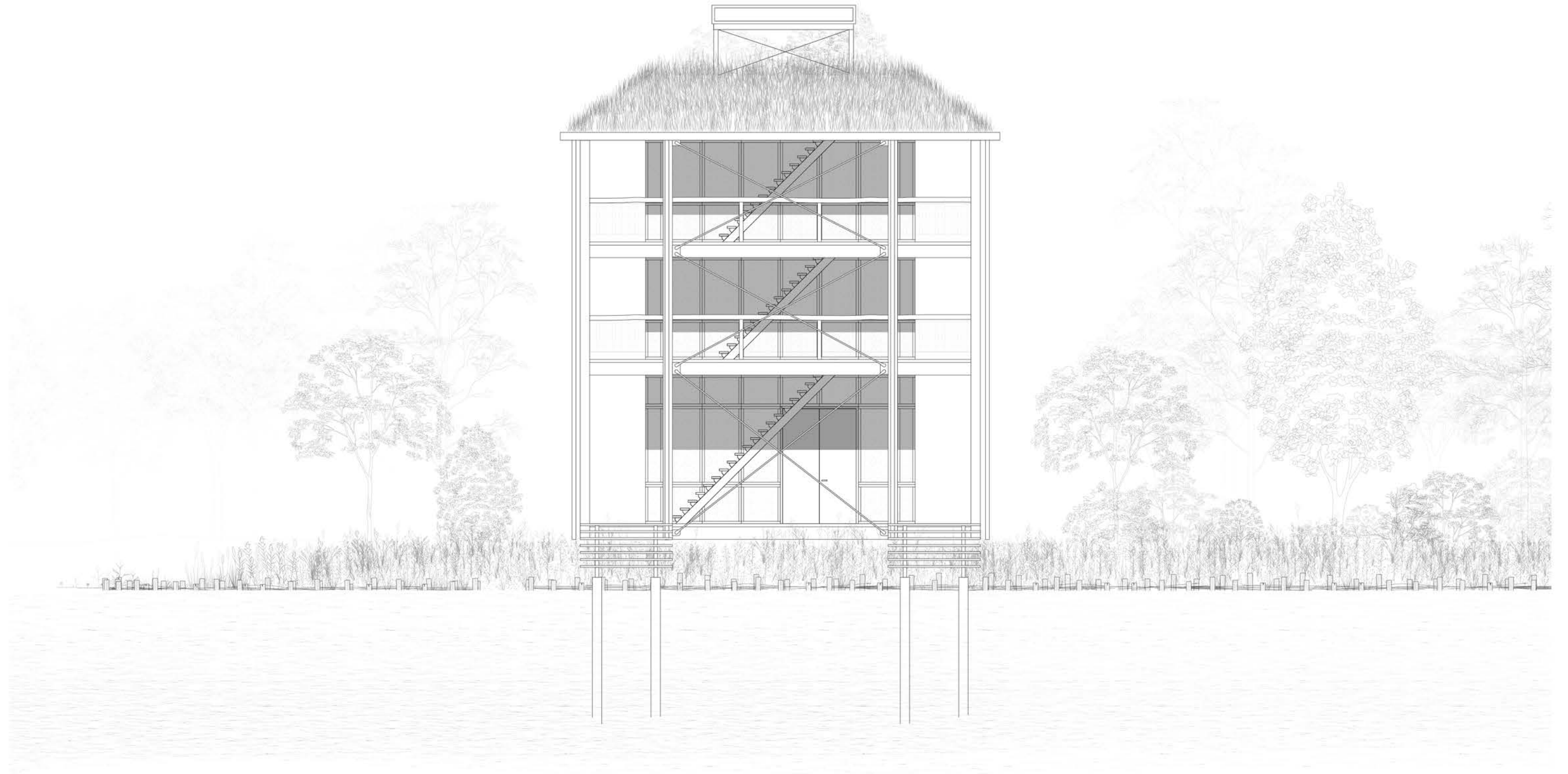
Elevation - Street facing facade



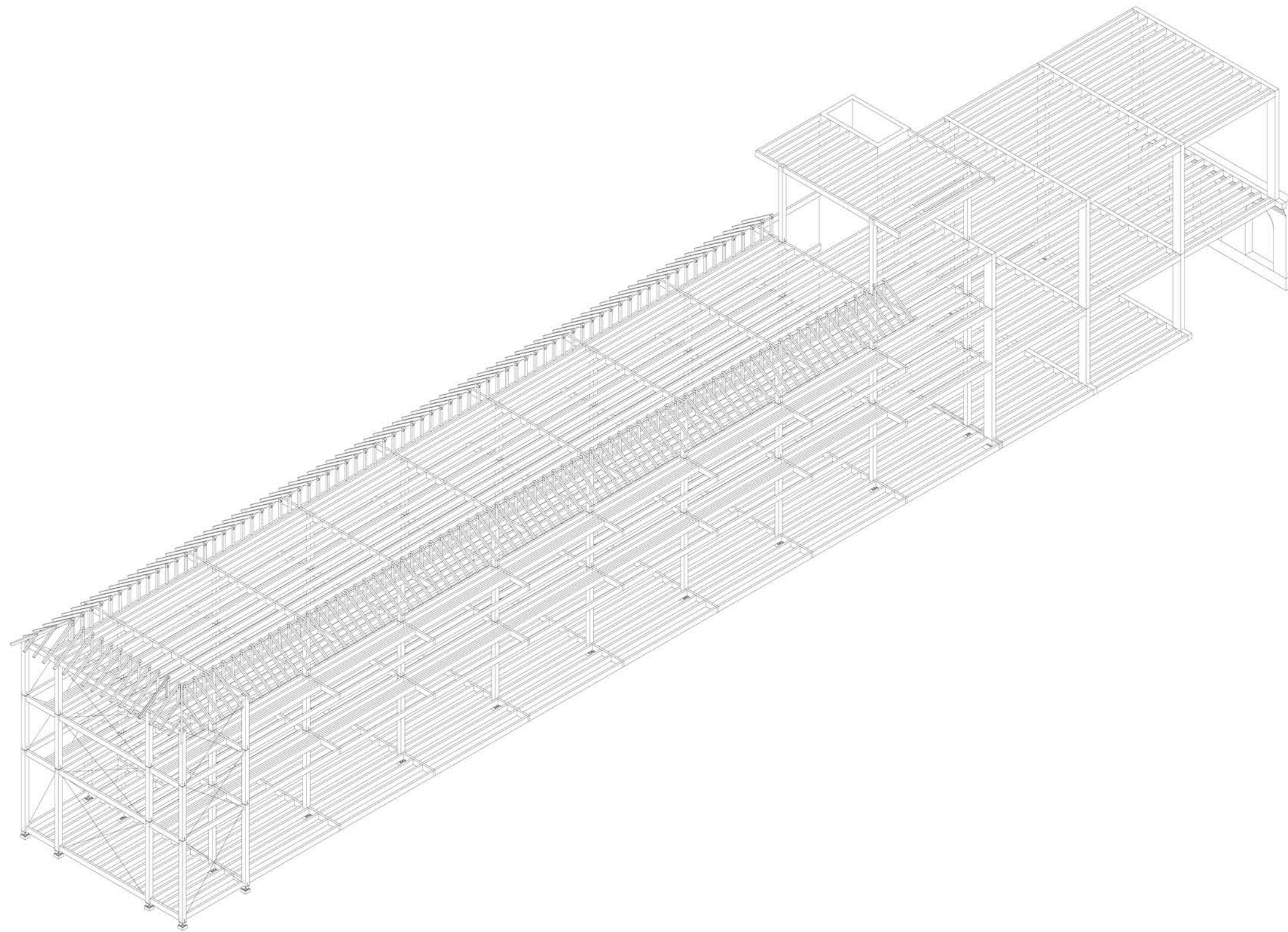
Elevation - Facing new water



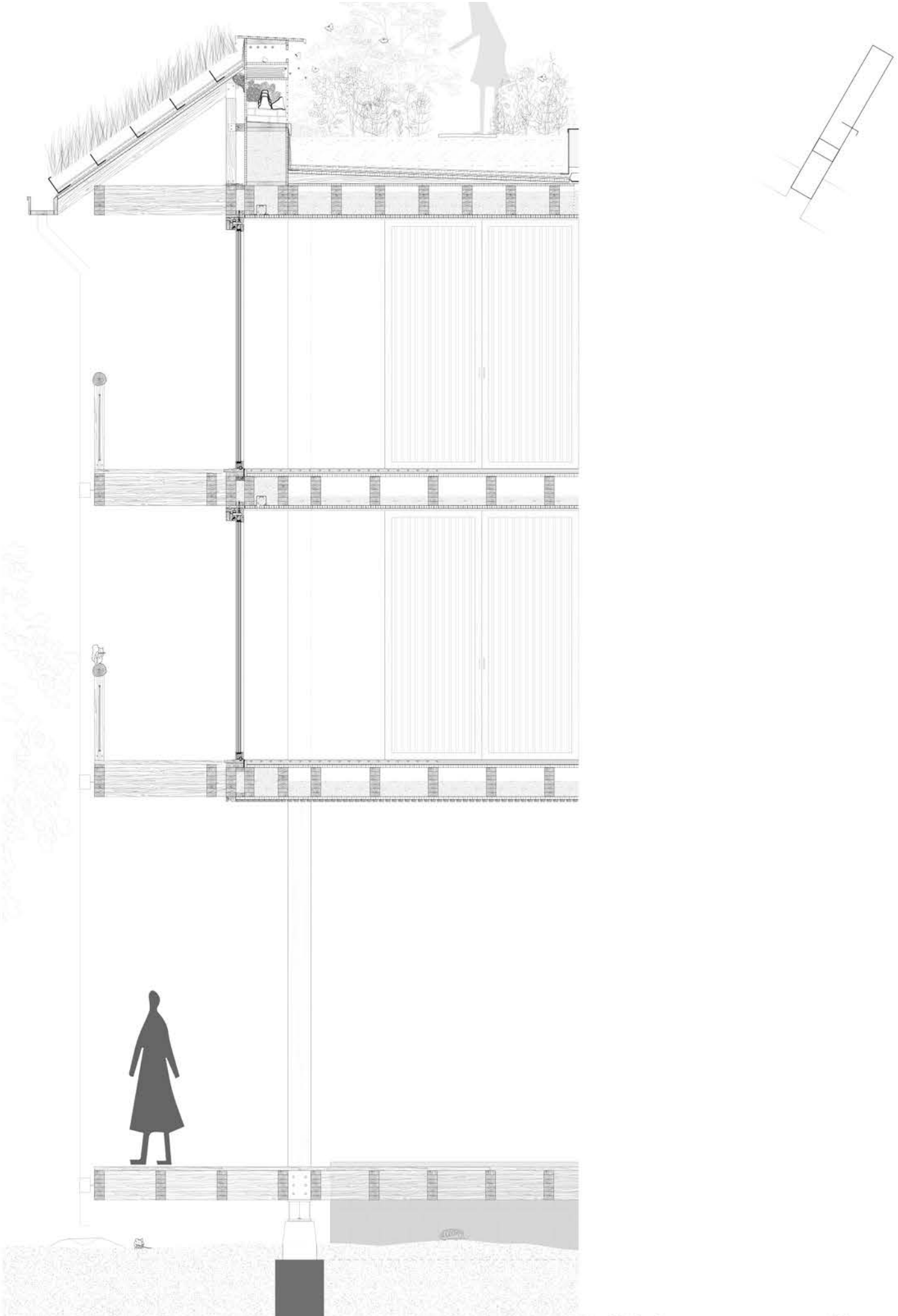
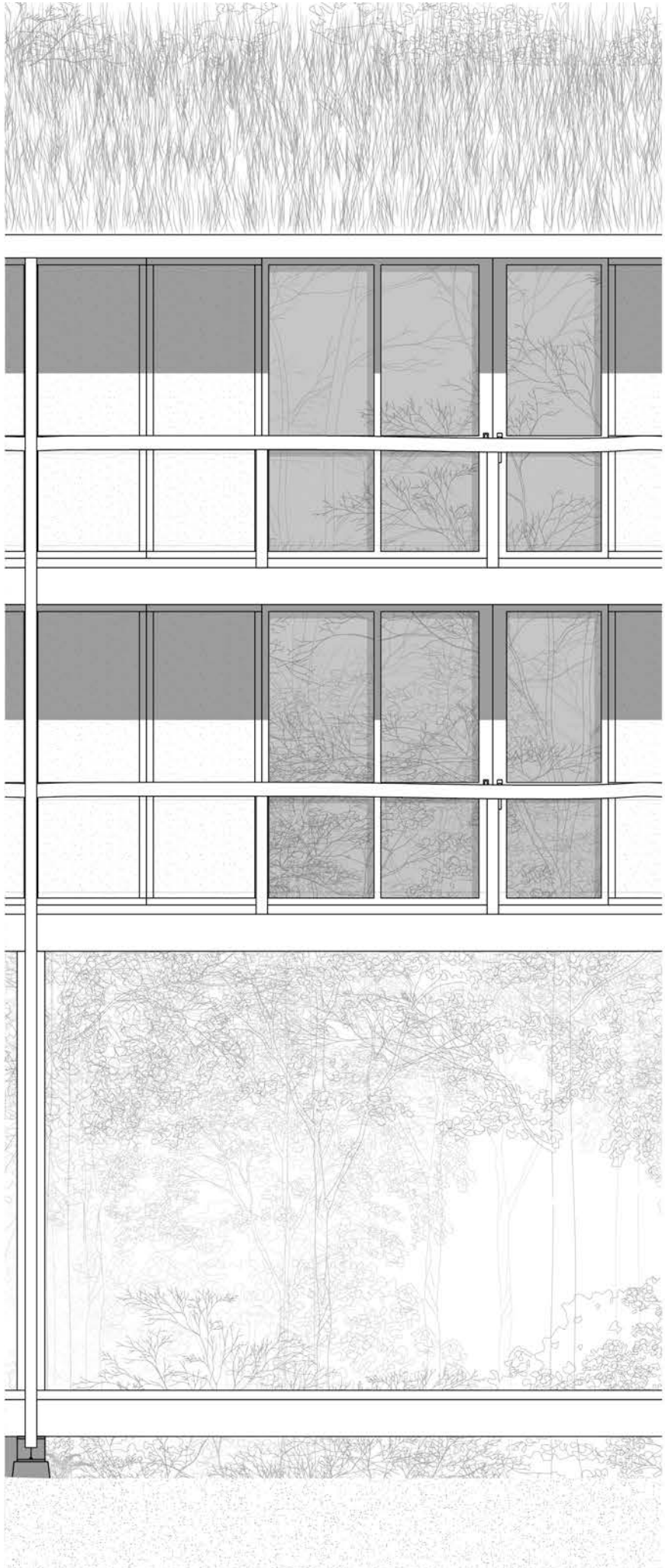
Elevation - Facing canal



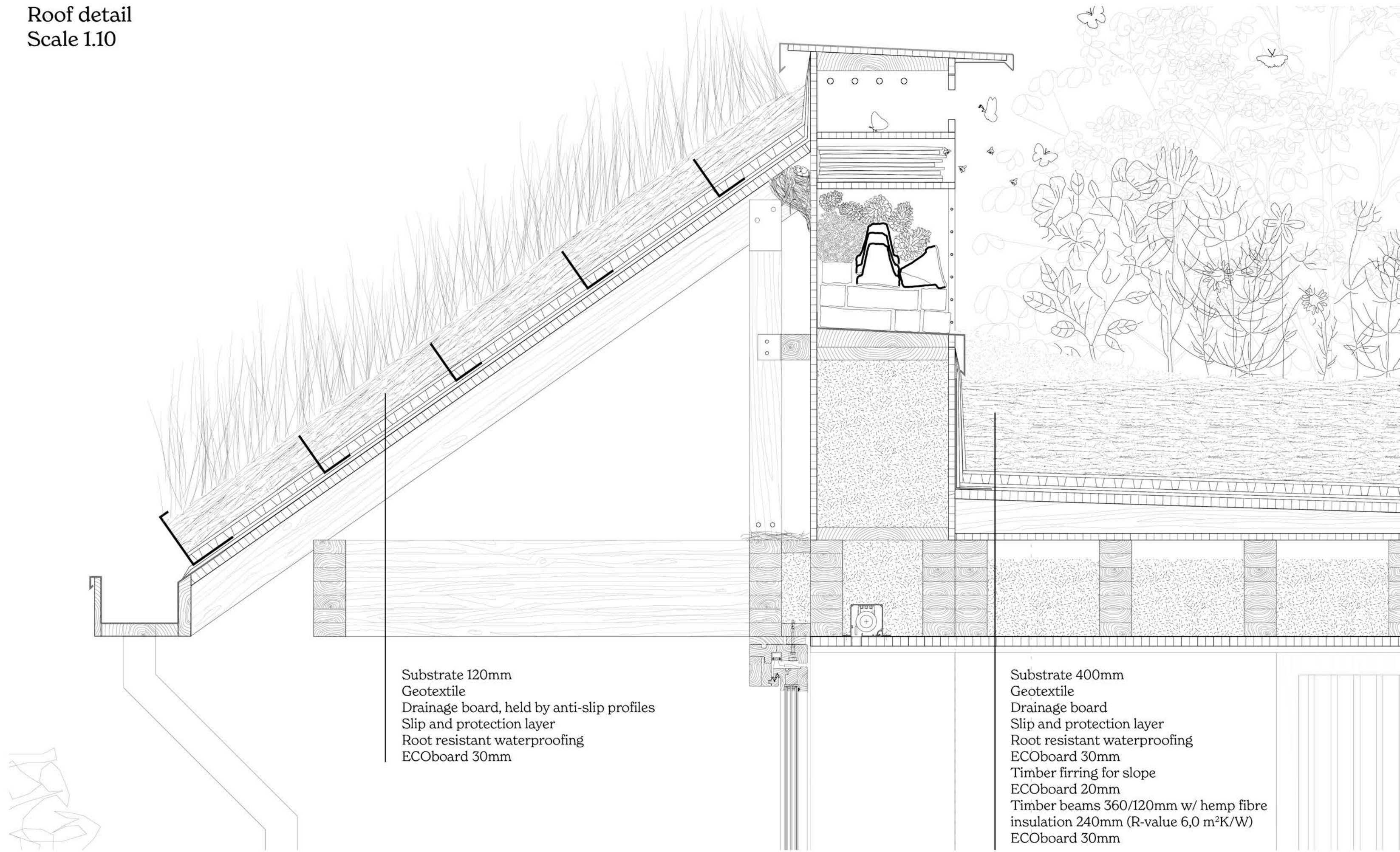
# Axonometry of structure



Facade and section



Roof detail  
Scale 1.10

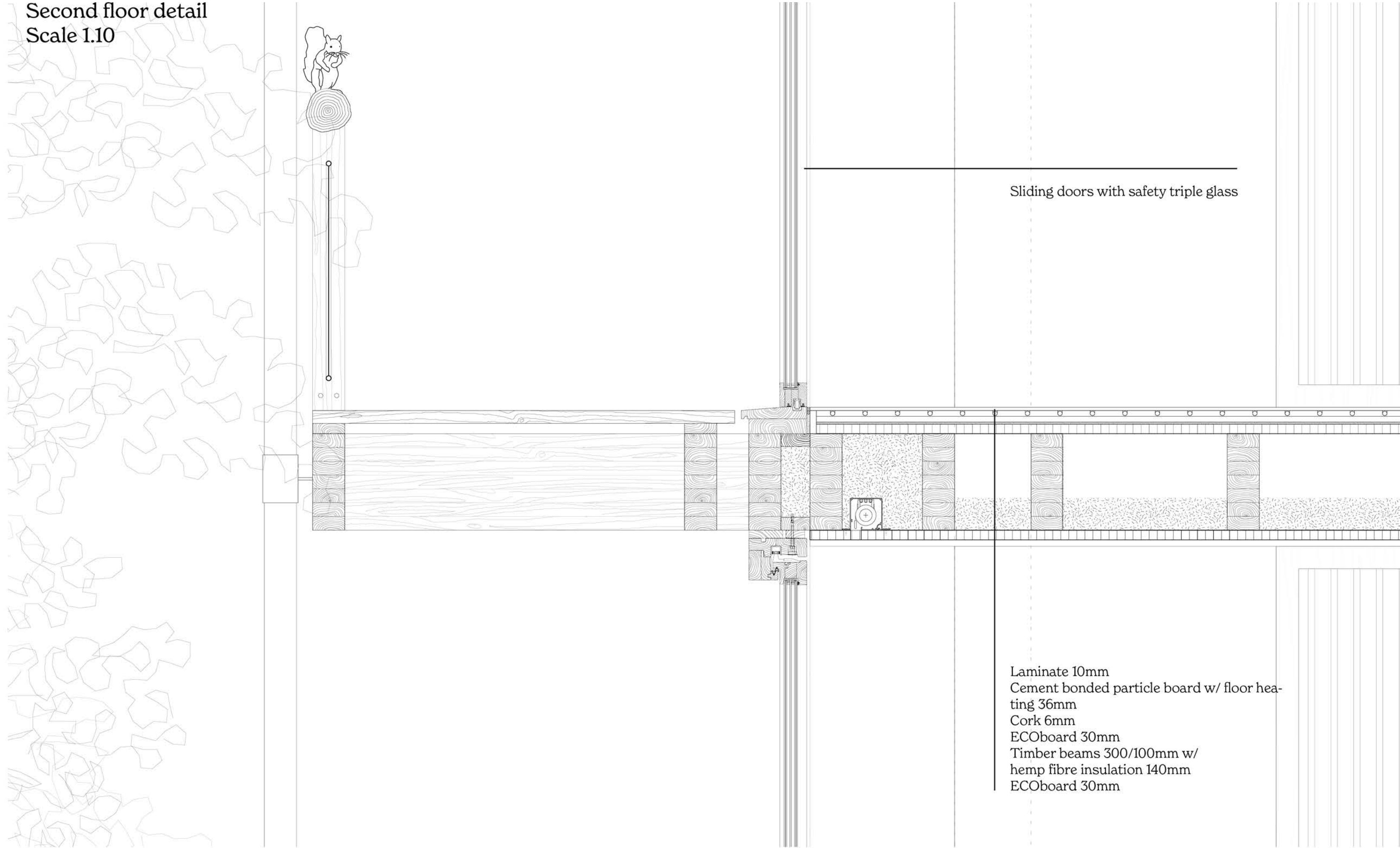


Substrate 120mm  
Geotextile  
Drainage board, held by anti-slip profiles  
Slip and protection layer  
Root resistant waterproofing  
ECOboard 30mm

Substrate 400mm  
Geotextile  
Drainage board  
Slip and protection layer  
Root resistant waterproofing  
ECOboard 30mm  
Timber furring for slope  
ECOboard 20mm  
Timber beams 360/120mm w/ hemp fibre  
insulation 240mm (R-value 6,0 m²K/W)  
ECOboard 30mm



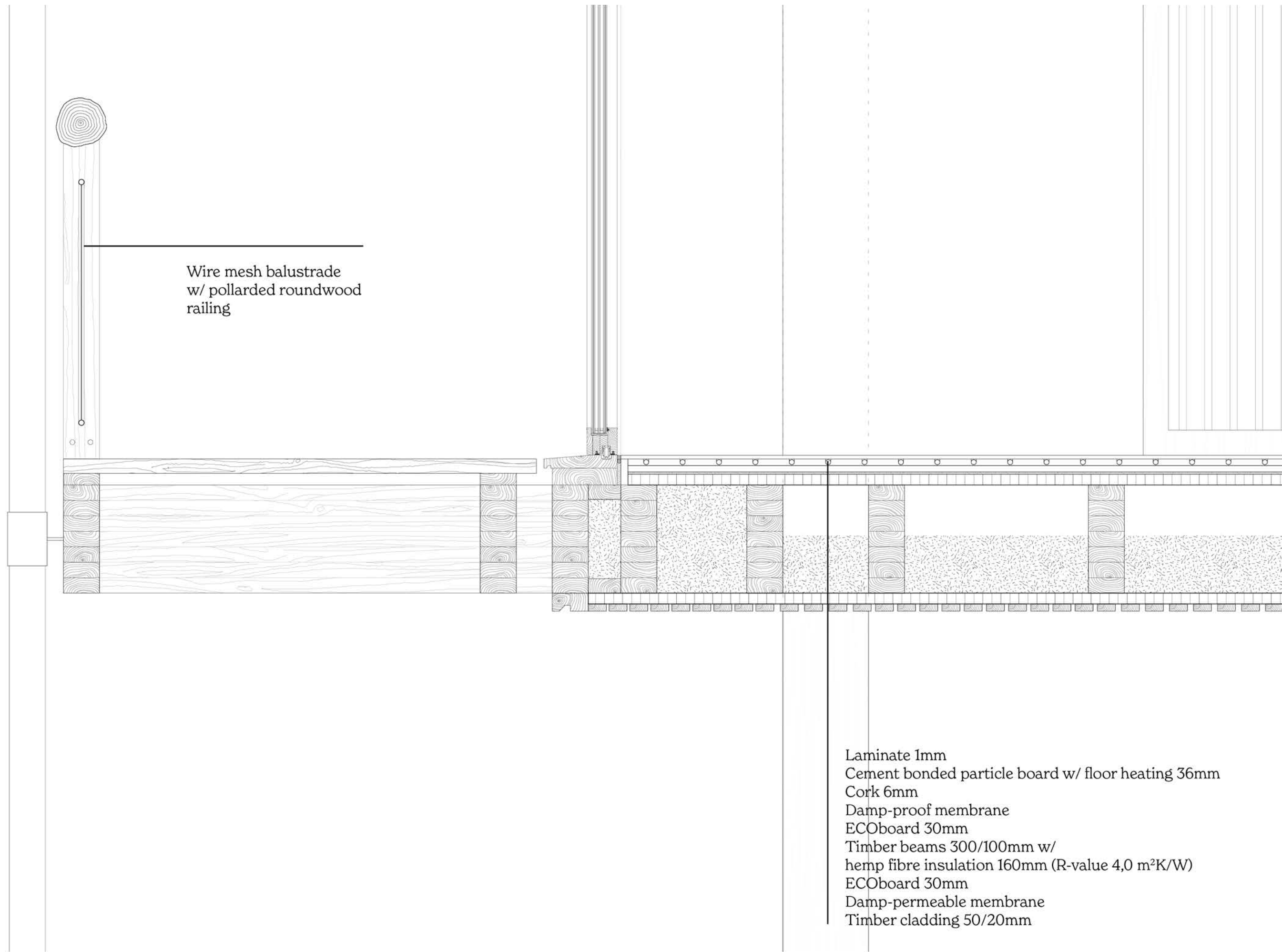
Second floor detail  
Scale 1:10



Sliding doors with safety triple glass

Laminate 10mm  
Cement bonded particle board w/ floor heating 36mm  
Cork 6mm  
ECOboard 30mm  
Timber beams 300/100mm w/  
hemp fibre insulation 140mm  
ECOboard 30mm

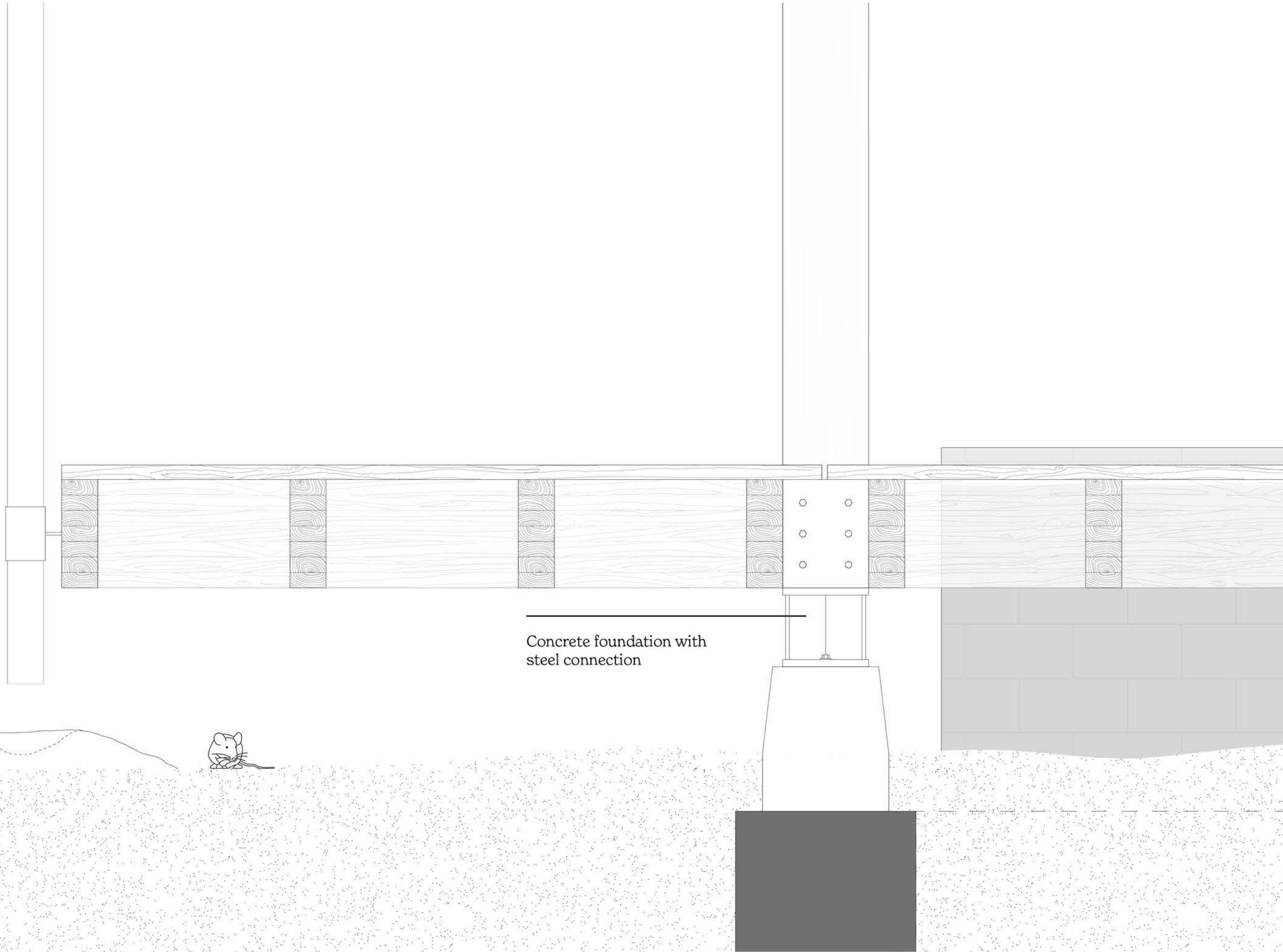
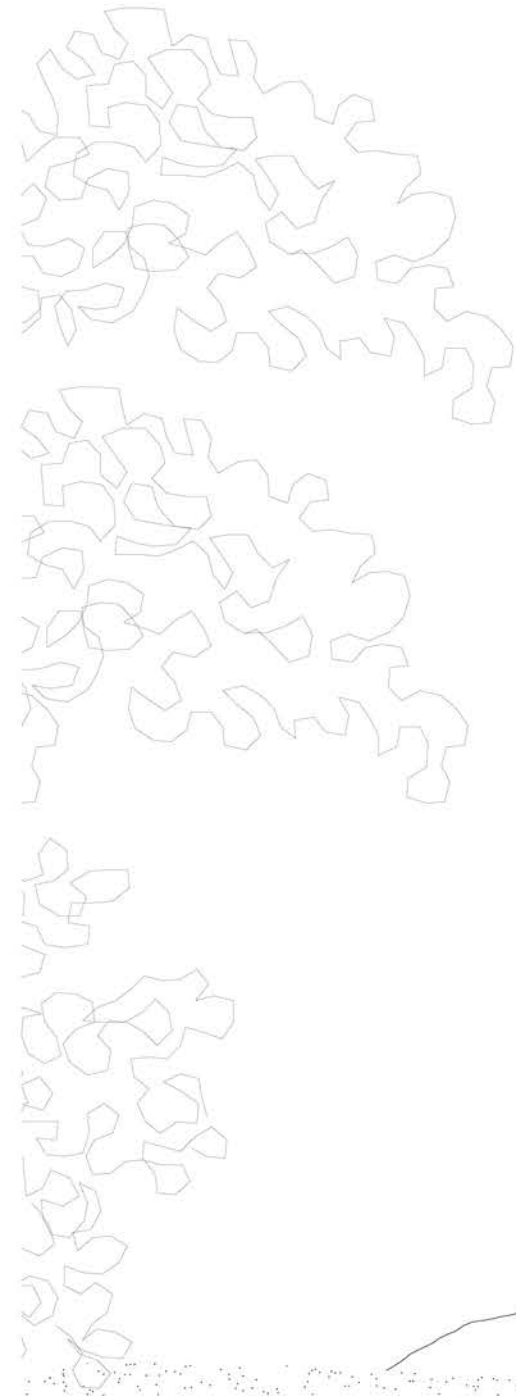
First floor detail  
Scale 1.10



Wire mesh balustrade  
w/ pollarded roundwood  
railing

Laminate 1mm  
Cement bonded particle board w/ floor heating 36mm  
Cork 6mm  
Damp-proof membrane  
ECOboard 30mm  
Timber beams 300/100mm w/  
hemp fibre insulation 160mm (R-value 4,0 m<sup>2</sup>K/W)  
ECOboard 30mm  
Damp-permeable membrane  
Timber cladding 50/20mm

Elevated ground floor  
Scale 1.10



Concrete foundation with  
steel connection