

Time-lapse applications of the Marchenko method on the Troll field

van IJsseldijk, Johnno; Brackenhoff, Joeri; Thorbecke, Jan; Wapenaar, Kees

DOI

[10.1111/1365-2478.13463](https://doi.org/10.1111/1365-2478.13463)

Publication date

2023

Document Version

Final published version

Published in

Geophysical Prospecting

Citation (APA)

van IJsseldijk, J., Brackenhoff, J., Thorbecke, J., & Wapenaar, K. (2023). Time-lapse applications of the Marchenko method on the Troll field. *Geophysical Prospecting*, 72(3), 1026-1036.
<https://doi.org/10.1111/1365-2478.13463>

Important note

To cite this publication, please use the final published version (if applicable).
Please check the document version above.

Copyright

Other than for strictly personal use, it is not permitted to download, forward or distribute the text or part of it, without the consent of the author(s) and/or copyright holder(s), unless the work is under an open content license such as Creative Commons.

Takedown policy

Please contact us and provide details if you believe this document breaches copyrights.
We will remove access to the work immediately and investigate your claim.

Time-lapse applications of the Marchenko method on the Troll field

Johno van IJsseldijk¹  | Joeri Brackenhoff²  | Jan Thorbecke¹  | Kees Wapenaar¹ 

¹Department of Geoscience and Engineering, Delft University of Technology, Delft, The Netherlands

²Quantairra Research and Development Services B.V., Delft, the Netherlands

Correspondence

Johno van IJsseldijk, Department of Geoscience, and Engineering, Delft University of Technology, 2628 CN, Delft, The Netherlands.

Email: johnovanijseldijk@outlook.com

Funding information

European Research Council; European Union's Horizon 2020 research and innovation programme, Grant/Award Number: 742703

Abstract

The data-driven Marchenko method is able to redatum wavefields to arbitrary locations in the subsurface, and can, therefore, be used to isolate zones of specific interest. This creates a new reflection response of the target zone without interference from over- or underburden reflectors. Consequently, the method is well suited to obtain a clear response of a subsurface reservoir, which can be advantageous in time-lapse studies. The isolated responses of a baseline and monitor survey can be more effectively compared; hence, the retrieval of time-lapse characteristics is improved. This research aims to apply Marchenko-based isolation to a time-lapse marine data set of the Troll field in Norway in order to acquire an unobstructed image of the primary reflections and retrieve small time-lapse traveltimes difference in the reservoir. It is found that the method not only isolates the primary reflections but can also estimate internal multiples outside the recording time. Both the primaries and the multiples can then be utilized to find time-lapse traveltimes differences. More accurate ways of time-lapse monitoring will allow for a better understanding of dynamic processes in the subsurface, such as observing saturation and pressure changes in a reservoir or monitoring underground storage of hydrogen and CO₂.

KEYWORDS

seismics, monitoring, time lapse

INTRODUCTION

Time-lapse seismic has become increasingly important to monitor fluid flows and geomechanical changes in subsurface reservoirs, such as observing pressure and saturation changes (Dadashpour et al., 2007; Johnston et al., 1998; Landrø, 2001), monitoring CO₂ storage sites (Chadwick et al., 2010; Ivandic et al., 2018; Pevzner et al., 2011) and assessing compaction and subsidence (Barkved & Kristiansen, 2005; Hatchell & Bourne, 2005). Typically, these studies compare an initial baseline study followed by one or more monitor studies. From

these studies, small differences in amplitude (Landrø, 2001), in traveltimes (Landrø & Stammeijer, 2004; MacBeth et al., 2019, and this work) or in a combination of both (Tura et al., 2005; Trani et al., 2011) can be observed. These changes can be retrieved by independently creating an image for both the baseline and monitor study and subtracting these images from one another to find the time-lapse differences. This subtraction highlights the dynamic differences, for example, the fluid flow in the reservoir, while removing the static part from the data, such as the time-invariant geology (Lumley, 2001). A common technique to retrieve time-lapse time differences is

This is an open access article under the terms of the Creative Commons Attribution License, which permits use, distribution and reproduction in any medium, provided the original work is properly cited.

© 2023 The Authors. *Geophysical Prospecting* published by John Wiley & Sons Ltd on behalf of European Association of Geoscientists & Engineers.

by cross-correlating the signal of the baseline and monitor surveys. This can either be done on picked events shared by both surveys or to the complete data sets all at once (MacBeth et al., 2020). Snieder et al. (2002) show that due to multiple scattering, correlations of the coda of a signal can display larger time-lapse effects compared to correlating first arrivals. This technique, called coda wave interferometry, can be applied on a laboratory scale to core samples (Singh et al., 2019) as well as on field scales to monitor temporal changes in a volcano (Grêt et al., 2005). Wapenaar and van IJsseldijk (2020) introduce a novel methodology to clearly identify the reservoir response from a seismic survey using Marchenko-based isolation as well as to improve the detectability of the traveltimes changes by correlating reservoir-related internal multiples, akin to the principle of coda wave interferometry. At the base of this new methodology are the Marchenko equations, which allow for a data-driven redatuming of the seismic wavefield to an arbitrary focal point in the subsurface (Slob et al., 2014; Wapenaar et al., 2014). Since all orders of internal multiples are accounted for, the redatumed wavefields are free from any interactions of the overburden, hence providing an unobstructed view of the primary reflections of the reservoir when a focal level just above the reservoir is chosen. The Marchenko equations can then be applied a second time to the newly found reflection response to also remove underburden interactions (Wapenaar & Staring, 2018). If the second focal depth is chosen just below the reservoir, the final result has effectively isolated all primaries and multiples of the reservoir. This isolated response can then be used to more accurately retrieve time-lapse traveltimes shifts due to changes in the reservoir by cross-correlating baseline and monitor responses (van IJsseldijk & Wapenaar, 2021; van IJsseldijk et al., 2023). Here, the aim is to apply the Marchenko method to marine time-lapse data sets of the Troll field and retrieve accurate time-lapse traveltimes shifts. In order to do this, we first review the theory of isolating the reservoir response and how to extract time-lapse traveltimes differences from the primary and multiple reflections. Next, the Troll field data are introduced; before the methodology can be applied a number of preprocessing steps and limitations of the data need to be considered. After properly preparing both the baseline and monitor surveys, Marchenko-based isolation is used to enhance the reservoir response for time-lapse analysis. Finally, the traveltimes differences related to the reservoir are calculated from suitable primaries and multiples.

THEORY

This section briefly reviews the theory of Marchenko-based isolation of the reservoir response from the full reflection response. After applying this isolation to both a baseline and monitor study, the traveltimes differences inside the reservoir

can be more accurately calculated, as described in the second part of this section. A full derivation of the Marchenko method is beyond the scope of this paper; instead, only relevant equations are discussed here. Wapenaar et al. (2021) provide a more thorough derivation and background on the Marchenko method.

Marchenko-based isolation

The Marchenko method relies on two Green's function representations that relate the extrapolated Green's functions ($U^{-,\pm}$) to the extrapolated focusing functions (v^{\pm}) via the reflection response $R(\mathbf{x}_R, \mathbf{x}_S, t)$. In this notation, the first and second coordinates describe the receiver and source position, respectively, and t denotes time. The superscripts $-$, \pm represent an up-going receiver field from an up ($-$) or down-going ($+$) source field. The focusing functions are defined in a truncated medium, which is the same as the actual medium above an arbitrary focal level and homogeneous below this level. In the actual medium, the focusing functions let the wavefield converge to the focal point, creating a virtual source that produces the Green's functions between the focal depth and the surface. Both the focusing and Green's functions are extrapolated from the focal depth to the surface so that the coordinates of all the functions are located at acquisition surface S_0 . The focusing of the wavefield in the actual medium is then described by the following equations (van der Neut & Wapenaar, 2016):

$$\begin{aligned}
 &U^{-,+}(\mathbf{x}_R, \mathbf{x}'_S, t) + v^{-}(\mathbf{x}_R, \mathbf{x}'_S, t) \\
 &= \int_{S_0} R(\mathbf{x}_R, \mathbf{x}_S, t) * v^{+}(\mathbf{x}_S, \mathbf{x}'_S, t) d\mathbf{x}_S, \quad (1)
 \end{aligned}$$

and

$$\begin{aligned}
 &U^{-,-}(\mathbf{x}_R, \mathbf{x}'_S, -t) + v^{+}(\mathbf{x}_R, \mathbf{x}'_S, t) \\
 &= \int_{S_0} R(\mathbf{x}_R, \mathbf{x}_S, -t) * v^{-}(\mathbf{x}_S, \mathbf{x}'_S, t) d\mathbf{x}_S. \quad (2)
 \end{aligned}$$

Here, $*$ denotes a convolution and the right-hand side integrates over the source positions \mathbf{x}_S at the acquisition surface S_0 . These two equations have four unknowns; hence, to solve the equations, an additional causality constraint is introduced, which takes advantage of the fact that the focusing and Green's functions are separable in time (Wapenaar et al., 2014). In order to achieve this separation, an estimate of the two-way traveltimes (TWT) from S_0 to the focal depth and back is required. This estimate can, for example, be obtained from a smooth velocity model. By limiting Equations (1) and (2) between $t = 0$ s and this TWT, the Green's functions on the left-hand side vanish (van der Neut & Wapenaar, 2016); the

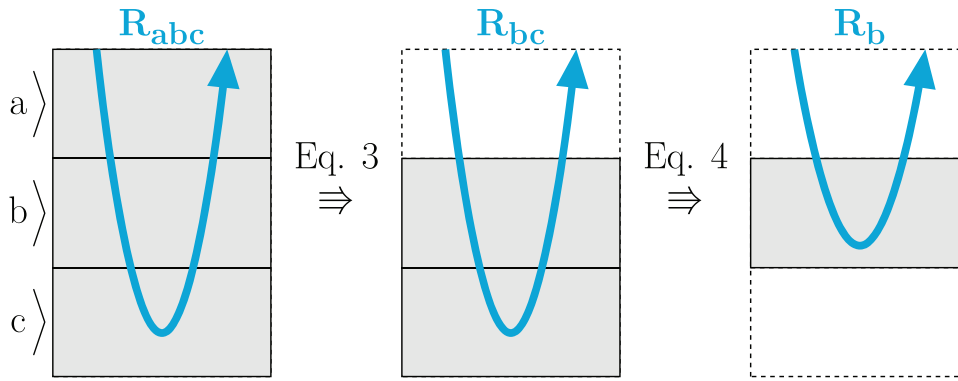


FIGURE 1 Graphic showing the concept of the Marchenko-based isolation. The medium is divided into three units: overburden a , target zone b and underburden c . First, the overburden is removed from the response as described in Equation (3). Next, the underburden is removed, leaving only the target zone with the reservoir response.

resulting equations are known as the extrapolated Marchenko equations, which now only contain two unknowns and can, therefore, be solved iteratively (Thorbecke et al., 2017) or by inversion (van der Neut, Thorbecke, et al., 2015). Next, the subsurface is divided into three units: overburden a , target zone b and underburden c as shown in Figure 1. The overburden and underburden contain undesirable responses, whereas the target zone contains the reservoir of interest for the time-lapse study. The primary and multiple reflections of the overburden and underburden can be removed using a twofold Marchenko-based strategy, leaving a reflection response only containing events from the target zone. First, Equations (1) and (2) are used to find the extrapolated Green's functions with a focal level between overburden a and target zone b . Using these Green's functions, a reflection response free of overburden interactions can be acquired by solving (Wapenaar et al., 2021):

$$U_{a|bc}^{-,+}(\mathbf{x}_R, \mathbf{x}'_S, t) = - \int_{S_0} U_{a|bc}^{-,-}(\mathbf{x}_R, \mathbf{x}'_R, t) * R_{bc}(\mathbf{x}'_R, \mathbf{x}'_S, t) d\mathbf{x}'_R. \quad (3)$$

The subscript $a|bc$ denotes that the extrapolated Green's functions are retrieved from the full reflection response (R_{abc}) with a focal depth between units a and b . The reflection response R_{bc} is retrieved by a multi-dimensional deconvolution (MDD; Brogгинi et al., 2014) and contains all primary and multiple reflections from b and c , but none from overburden a (Figure 1b). This new reflection response can then be used to find focusing functions below the target zone, which in turn are used to find the reflection response that only contains target zone events (Wapenaar & Staring, 2018):

$$v_{b|c}^{-}(\mathbf{x}_R, \mathbf{x}'_S, t) = \int_{S_0} v_{b|c}^{+}(\mathbf{x}_R, \mathbf{x}'_R, t) * R_b(\mathbf{x}'_R, \mathbf{x}'_S, t) d\mathbf{x}'_R. \quad (4)$$

The subscript $b|c$ denotes that the extrapolated focusing functions are retrieved from the reflection response without

overburden (R_{bc}) using a focal depth at the interface of units b and c . Equation (4) directly follows from the definition of a focusing function in the truncated medium (Wapenaar et al., 2021). Once again, the isolated reflection response R_b can be retrieved from this equation by MDD and consists solely of the reflections (primary and multiple) from the target zone. van Ijsseldijk et al. (2023) demonstrate how the internal multiples in the target area b can be artificially enhanced by increasing the amplitude of the coda of the downgoing focusing function v^+ in order to benefit from the identification of the multiples and the extraction of time-lapse traveltime differences. Figure 1 summarizes the twofold approach to isolate the reservoir response from a full reflection response. This process is applied to the baseline as well as the monitor study to acquire the isolated reservoir responses in both studies. These isolated responses are then used to find the time-lapse traveltime differences inside the reservoir.

Extracting travel-time differences

Once an isolated reflection response of the primary and multiples around the reservoir is acquired, the traveltime differences in the reservoir between the baseline and monitor survey can be determined. However, the time-lapse delays due to changes in the overburden have not yet been accounted for. To remove these delays, a primary reflection ($P1$) above the reservoir is identified, which can then be used as a control event that includes the overburden time differences but excludes the differences in the reservoir. Identifying such an event is trivial in the isolated response, which is solely comprised of the target zone reflections. Next, a second reflection, either a second primary ($P2$) or an internal multiple ($M1$, $M2$, etc.), is identified, this time from below the reservoir so that it contains both overburden and the reservoir traveltime differences. Subsequently, these two reflections are

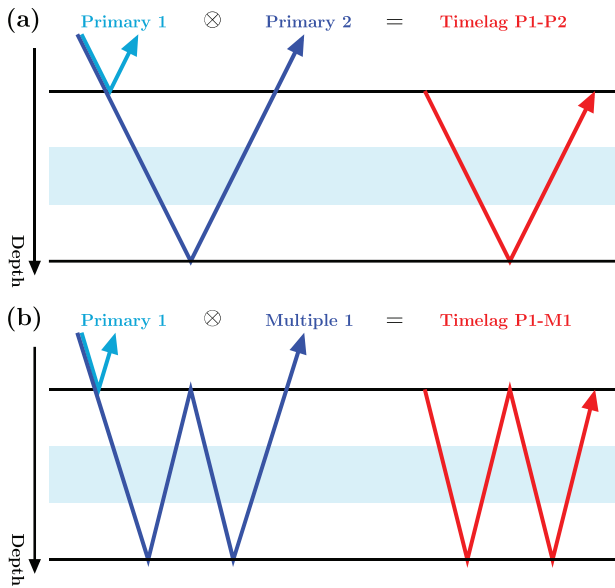


FIGURE 2 Example of cross-correlations of primary 1 with primary 2 (a) and multiple 1 (b). In the resulting time lags, the common path is cancelled, that is, the overburden effects are effectively removed. Note, how the multiple travels through the reservoir layer (in light blue) an additional time compared to primary 2.

cross-correlated to remove overburden changes (van IJsseldijk et al., 2023):

$$C_{\star}(\mathbf{x}_0, \tau) = \int_0^{\infty} \Theta_{P1}(t + \tau) R_b(\mathbf{x}_0, t + \tau) \Theta_{\star}(t) R_b(\mathbf{x}_0, t) dt. \quad (5)$$

Here, C represents the cross-correlation, \mathbf{x}_0 the zero-offset coordinate and Θ is a time window that selects the desired reflection from the isolated reflection response as follows:

$$\Theta_{\star}(t) = \begin{cases} 1, & \text{if } t_{\star} - \epsilon < t \leq t_{\star} + \epsilon \\ 0, & \text{otherwise.} \end{cases} \quad (6)$$

The subscript \star denotes either primary 1 or 2 ($P1$ or $P2$) or an internal multiple, t_{\star} then specifies the TWT of this event, and ϵ serves as a small shift to include the full wavelet of the reflection data. Figure 2a and 2b shows how Equation (5) is used to retrieve the time lags of primary 1 with primary 2 as well as with multiple 1, respectively. The final results after cross-correlation no longer contain time-lapse overburden effects. The next step, where the baseline and monitor time difference will be computed, will, therefore, only contain time differences from the reservoir and none from the overburden.

Finally, the actual time-lapse differences are retrieved. In order to achieve this, the time-lag correlations for both the baseline and monitor study are computed using Equation (5). Thereafter, these time lags are cross-correlated once more to

retrieve the traveltime difference (Δt_{\star}) in the reservoir:

$$\Delta t_{\star}(\mathbf{x}_0) = \arg \max_{\tau} \left(\int_0^{\infty} C_{\star}(\mathbf{x}_0, t + \tau) \bar{C}_{\star}(\mathbf{x}_0, t) dt \right). \quad (7)$$

Here, C_{\star} is the retrieved correlation from Equation (5) and the bar denotes retrieval in the monitor survey as opposed to the baseline survey. The argument of the maximum is used to find the zero-offset time shifts from the final correlation. van IJsseldijk et al. (2023) apply this method to a synthetic set to find time differences in three subsurface dome structures. Application of the Marchenko method to field data is more complex due to strict amplitude requirements on the reflection response (Brackenhoff et al., 2019; Staring et al., 2018). The next section discusses how to overcome this and other limitations on field data.

APPLICATION TO THE TROLL FIELD

The methodology is applied to a marine time-lapse data set shot over the Troll field off the Norwegian coast. In 1997, a three-dimensional (3D) baseline survey was conducted over the Troll West Gas Province, followed by a monitor survey in 2002. This study considers a two-dimensional (2D) subset of these 3D surveys. The time-lapse target is a hydrocarbon-water contact. Specifically, the hydrocarbon is a gas layer underlain by an oil leg with a varying thickness between 0 and 28 m (Hellem et al., 1986). The contact partially coincides with a geologic structure, which makes extracting time-lapse effects from the data challenging (Bannister et al., 2005). Additionally, the repeatability of the surveys is subpar, further complicating time-lapse analysis with conventional methods (Qu & Verschuur, 2020).

A number of basic pre-processing steps were applied to both data sets. First, it should be noted that the data were not completely raw, namely, some unknown time gain and wavelet processing as well as far offset muting was performed. The known pre-processing first applied a regularization to get a 2D geometry with 481 co-located source and receiver positions sampled at 12.5 m. Near-offsets of about 85 m were interpolated by parabolic Radon transform (Kabir & Verschuur, 1995). Next, surface-related multiple elimination was applied to get a clearer image of the reservoir reflections (Verschuur et al., 1992). Note that this does not handle internal multiples, which will be dealt with separately using the Marchenko-based isolation. Deghosting was then applied as well as optimum wavelet processing to ensure a zero-phase character.

Aside from the unknown scaling factors, application of the Marchenko method also lacked a velocity model and suffered from the limited recording time of 2 s. To properly remove internal multiples with the Marchenko method, it is important

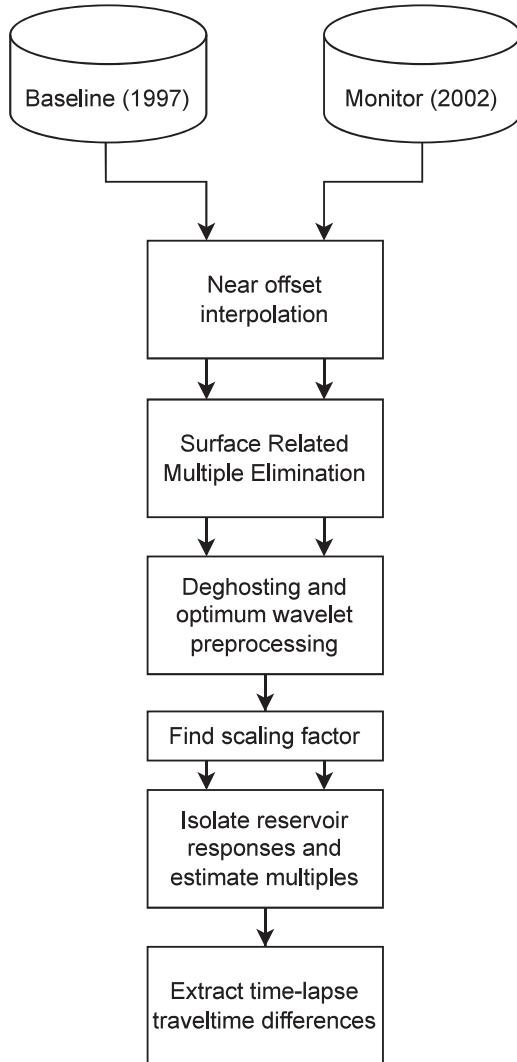


FIGURE 3 Flowchart detailing the different processing steps for retrieving traveltimes differences of the Troll time-lapse data.

that the scaling of the reflection response is accurate (van der Neut, Wapenaar, et al., 2015). Moreover, a (smooth) velocity model is required to compute an estimate of the two-way traveltimes (TWT) between the focal depth and the surface. The limited recording time means that some of the internal multiples from the target zone are not recorded. In the following sections, these three problems will be taken care of one by one. Finally, the results of isolating the reservoir response and extracting time differences will be discussed. An overview of the different processing steps is given in Figure 3.

Velocity model estimation

In order to separate focusing functions from Green's functions, an estimation of the TWT from the surface to the focal depth is required. In general, this is achieved with the use of an eikonal solver in a smooth velocity model. Qu and Ver-

schuur (2020) use a simultaneous joint migration inversion approach to find the approximate baseline velocity model. However, this model was not readily available for this study. Instead, the model was derived from Figure 14a in Qu and Verschuur (2020). By matching the RGB (red, green, blue) values in the figure with the colour bar, a rough estimate of the original model was acquired, as shown in Figure 4. Since no major velocity changes are expected between the two time-lapse surveys, this model can be used for the Marchenko-based isolation of both the reservoir in the baseline and the monitor survey.

Scaling of the reflection response

Brackenhoff (2016) introduces a cost function that can be minimized to find the optimal scaling of the reflection data. Here, this function has to be slightly adapted in order to handle the extrapolated functions, but the principle of the method remains the same. The principle of using these cost functions relies on the fact that the energy in the redatumed reflection response usually decreases due to the removal of internal multiples. Consequently, if the scaling of the data is too low not all multiple energy will be removed. Whereas, if the scaling is too high, the energy will be excessively magnified. Hence, only if the data are correctly scaled the cost function will be minimized due to the lower energy by the multiple removal. The redatuming in Equation (3) is relatively expensive to apply multiple times on the data for each scaling factor. Therefore, the computationally inexpensive alternative of double dereverberation (ddr) by double-focusing is considered instead (Wapenaar et al., 2021):

$$R_{\text{ddr}}(\mathbf{x}'_R, \mathbf{x}'_S, t) = \int_{\mathbb{S}_0} v^+(\mathbf{x}_R, \mathbf{x}'_R, t) * U^{-,+}(\mathbf{x}_R, \mathbf{x}'_S, t) d\mathbf{x}_R. \quad (8)$$

The downside of Equation (8) is that some remaining interactions of the overburden will still be present in the computed reflection response R_{ddr} . As mentioned before, the upside is that the double-focusing method is relatively cheap, more stable and can be easily applied to a wide range of scaling factors (Staring et al., 2018). The cost function considers the ratio of the energy in the reflection response before and after Marchenko redatuming and is applied as follows:

$$J(b) = \frac{\|R_{\text{ddr}}(\mathbf{x}'_R, \mathbf{x}'_S, t)\|_2}{\|R_{\text{ddr},0}(\mathbf{x}'_R, \mathbf{x}'_S, t)\|_2}. \quad (9)$$

Here, $\|\dots\|_2$ denotes the L2-norm, J is the cost function and b is the scaling of the original reflection response. $R_{\text{ddr},0}$ is the response for the focusing and Green's function of the first Marchenko iteration, which parallels a standard

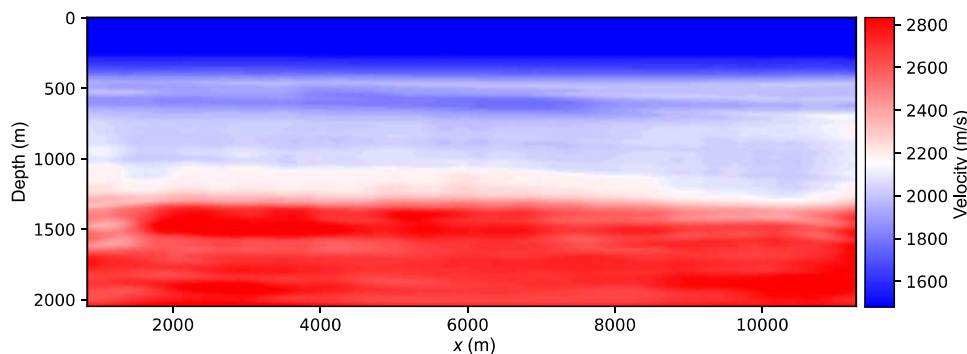


FIGURE 4 Baseline velocity model of the Troll field, derived from Qu and Verschuur (2020).

time-reversal experiment without internal multiple removal (Wapenaar et al., 2017). R_{ddr} is the response after the final Marchenko iteration, as specified by the user.

The estimation of the scaling factor depends on the removal of internal multiples by the Marchenko method. This process is complicated by the limited recording time of 2 s. This means that instead of picking a deep focal level below all reflectors as is ideal (Brackenhoff, 2016), a shallower focal level has to be used to calculate the cost functions. Consequently, the cost functions do not contain the lowest minimum, and only a range of possible factors is acquired. This range is further refined to find a single scaling factor by inverting for the reflection response in Equation (3) for a limited amount of scaling factors and visually examining the resulting reflection response. Finally, a single factor of 5×10^{-5} is found using this method for both time-lapse surveys.

Multiple retrieval beyond recorded time

The short recording time not only constrains the effectiveness of the scaling factor but also means that some of the target multiples are not recorded in the data. These multiples provide complementary information of the target zone and are ideally recovered from the data. A closer look at the focusing functions in Equation (4) reveals that these functions are solely defined between $t = 0$ and the two-way traveltime to the focal depth (i.e., in the truncated medium). Because of this finite behaviour, the focusing functions do not require all the recorded internal multiples to retrieve the reflection response without underburden. Consequently, Equation (4) can be used to compute the internal multiples outside of the recorded time. Note that this only applies for underburden removal (i.e., Equation 4), but not for overburden removal (i.e., Equation 3) as the Green's functions are infinite in time; hence, all events in the Green's functions are used to reconstruct the reflection response without overburden.

In order to illustrate how the focusing functions can be used to retrieve additional multiples outside the recorded time,

a simple three-layer one-dimensional (1D) model is considered. The acoustic impedance contrasts in this model are very strong, ensuring that a strong multiple train is generated as shown in Figure 5a. Next, two focal levels are considered; one at 1000 m that does not include any multiples in its response, and one at 1200 m that does. Subsequently, the Marchenko method and Equation (4) are used to retrieve a reflection response free of underburden effects, once with the full reflection response, and once using solely the primary reflections (i.e., with limited information). On the one hand, as shown in Figure 5b in the case where no multiples are present in the time window at the focal depth, the underburden is correctly removed independently of the inclusion of all multiples in the original reflection response. On the other hand, if the time window does include one or more multiples, the underburden can no longer accurately be removed when using primary reflections only (e.g., Figure 5c). This is caused by the fact that using the primaries only in Figure 5c reconstructs the reflection response with incomplete data (i.e., it misses a multiple important for reconstruction). It is, therefore, important that the time window contains all information of both primaries and multiples when removing the underburden.

This numerical experiment suggests that even though the internal multiples may not be recorded, they can still be extracted from the data by using the focusing functions. However, one has to ensure that all information is included in the time window, meaning that focal depth and corresponding time window should be picked as closely to the end of the recorded data as possible in order to ensure all events for finding the focusing functions are included. Since the focal level in Equation (4) can be arbitrarily chosen at any level below the two primary reflectors, this constraint can be easily satisfied in the current study.

Results of the Marchenko-based isolation

After the data are properly pre-processed as described in the previous sections, the Marchenko-based isolation can now be

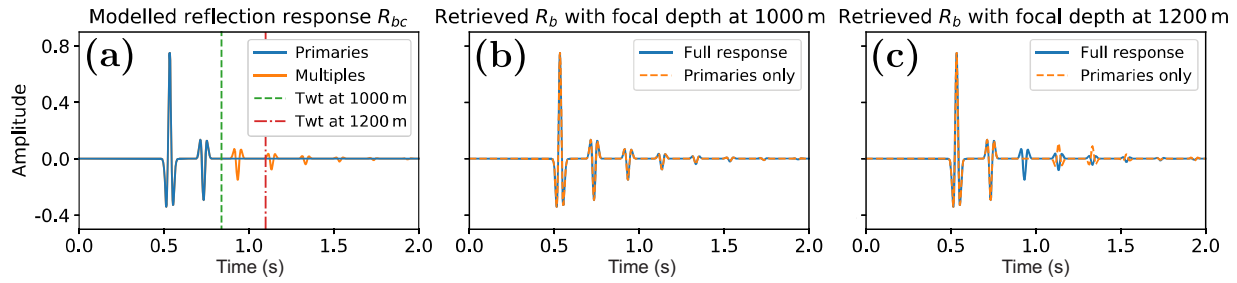


FIGURE 5 Reflection response R_{bc} modelled in a medium with a velocity and density profile of 1500 (m/s) and (kg/m^3) for depths 0–400 m, 4000 (m/s) and (kg/m^3) from 400 to 800 m and 1750 (m/s) and (kg/m^3) below 800 m. In (a), the primary reflections are shown in blue and the internal multiples in orange, with the two-way traveltime (TWT) for depths 1000 and 1200 m marked with a green-dashed and red dot-dashed lines, respectively. Next, the retrieved (by MDD) reflection response above the focal depth, R_b , is shown for Marchenko with the full response versus for the primary reflections only in blue and orange, respectively. Note that, in (b) and (c), response R_b can be properly retrieved (using Equation 4) from data that contain all events within the time window (b), if any events are missing in this window response R_b can no longer be correctly retrieved (c).

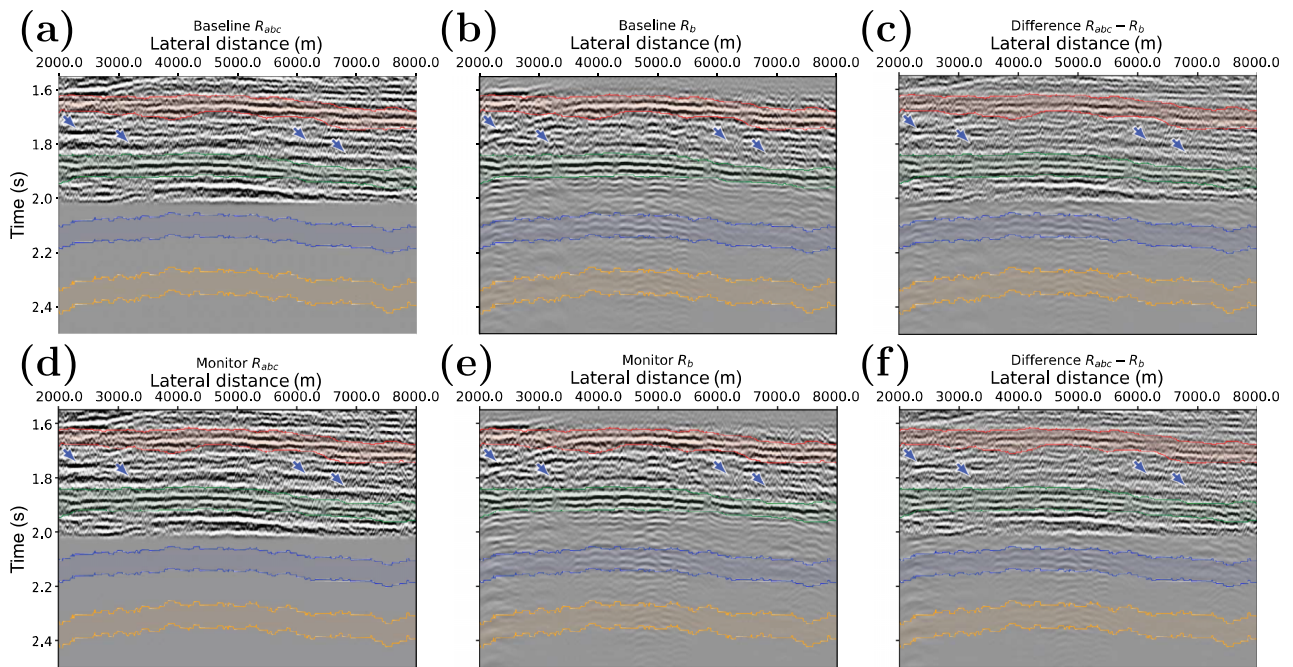


FIGURE 6 Zero-offset gathers of the baseline survey before (a), after Marchenko-based isolation (b) and their difference (c). The second row shows the same gathers for the monitor survey. The red, green, blue and orange highlights mark the first and second primaries as well as the first- and second-order multiples from these primaries. The arrows point at removed multiples originating from the overburden. As shown in (a) and (d), the original data only recorded 2 s, but the Marchenko method is able to retrieve multiples beyond this cut-off (i.e., b and e).

applied. The result of this isolation is shown in Figure 6. A reflector right above the reservoir is selected as primary 1 just after 1.65 s TWT. The first focal depth, for overburden removal, is chosen above this reflector at a depth of 1575 m. Next, primary 2 is identified around 1.9 s TWT, with a third primary following closely behind. Hence, the second focal depth, for underburden removal, is picked right in between these two reflectors at a depth of 1975 m. Subsequently, primary 1 and primary 2 can be isolated from the full reflection response. Finally, the internal multiples of the target zone

are enhanced by increasing the amplitudes of the coda of the down-going focusing function before a multi-dimensional deconvolution (MDD) of Equation (4) as described in van IJsseldijk et al. (2023).

Figure 6 shows the results for the baseline and monitor study in the first and second rows, respectively. Note that this figure shows zero-offsets gathers with red, green, blue and orange highlighting for the first primary, second primary, first multiple and second multiple of the target area, respectively. These windows will be later used to extract time differences.

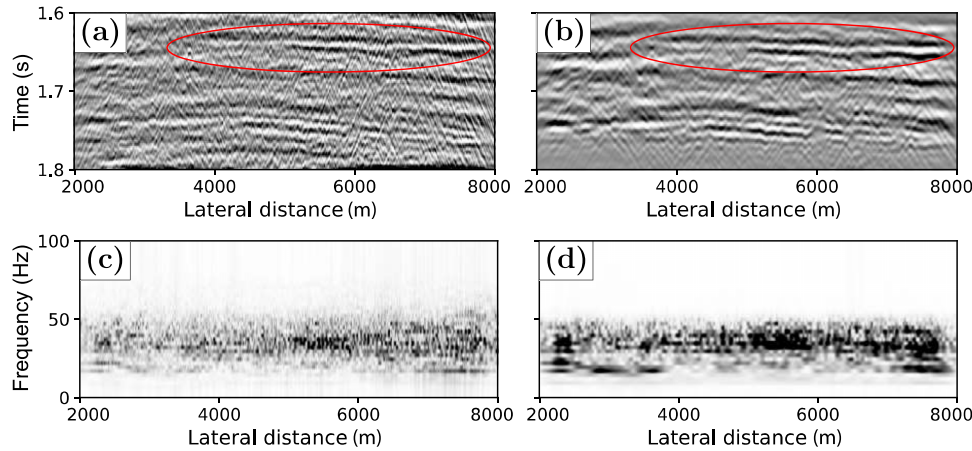


FIGURE 7 Time-lapse differences between the stacked baseline and monitor images, zoomed in on the target zone. The difference before Marchenko-based isolation is shown in (a). After Marchenko-based isolation (b), the reflectivity differences are a lot clearer as marked by the red ellipse. The frequency spectra for panels (a) and (b) are shown in (c) and (d), respectively.

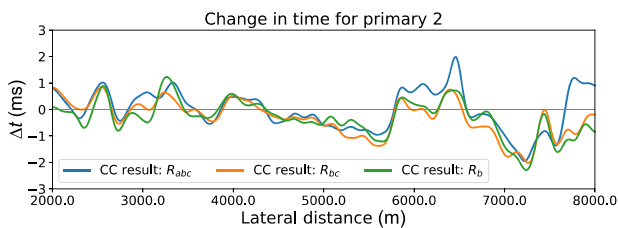


FIGURE 8 Time difference between the baseline and monitor time lag of primary 1 and primary 2. The blue, orange and green colours represent the time shift in the zero-offset response before Marchenko, after overburden removal and after full isolation, respectively.

The first column in the figure shows the original reflection response with a recording time until 2 s. There are no data available at 2.15 and 2.4 s, where the internal multiples are expected. In the second column, the response after over- and underburden removal is shown. Note that the internal multiples can now be observed at times beyond 2 s TWT, these multiples are especially strong at a lateral distance of 3500–6000 m. Furthermore, the over- and underburden reflections are removed not only below and above the focal levels but also inside the target zone as marked by the blue arrows in the figure. Finally, the third column shows the difference between the first two panels, once again the removal of overburden multiples in the target area between Primary 1 and 2 is noted. However, there also seems to be quite some coherent information removed from the first and second primaries. This could be an indication that the optimal scaling factor has not been found or another explanation could be that the MDD applied a correction on the phase of the signal (e.g., van Dalen et al., 2015).

The results in Figure 6 for the baseline and monitor survey are quite similar, although some minor differences can be detected when carefully analysing the panels on each row. In

order to more precisely compare the two studies, a raw stack of all shots in the reflection data was computed for both the regular and the isolated response. The results of these stacks and their spectra are displayed in Figure 7. The time-lapse effects are especially strong in the first primary at 1.65 s twt. Additionally, the stack created from the isolated response in (b) is much cleaner compared to the stack of the full reflection response in (a). Consequently, the isolated stack shows more continuity, which will aid in a better interpretation of the data.

Extracting time-lapse traveltimes differences

In order to accurately retrieve the time-lapse traveltimes differences, the reflection of the time is interpolated in the frequency domain from 4 to 1 ms. Next, the coloured windows in Figure 6 are now used to extract the time-lapse differences as described in Equation (7). Primary 1, highlighted in red, is correlated either with the second primary or with one of the multiples giving the time lag between the two events. The baseline time lag is then correlated with the monitor time lag to find the time difference. First, the time lag of $P1$ and $P2$ is considered for the full reflection response R_{abc} , the response after overburden removal R_{bc} and the response after total isolation of the target zone R_b . The results of this experiment are shown in Figure 8. Note that the three lines match quite closely aside from the edges, where the deviations are slightly larger. The close match is easily explained in Figure 6, which shows that both primaries are already visible in the original reflection response with little obstructions from the overburden. The worse performance at the edges is most likely due to edge effects introduced by the MDD.

Figure 9 shows the retrieved traveltimes differences for the primary and multiples in the isolated response R_b , which is the only response that contains the predicted internal multi-

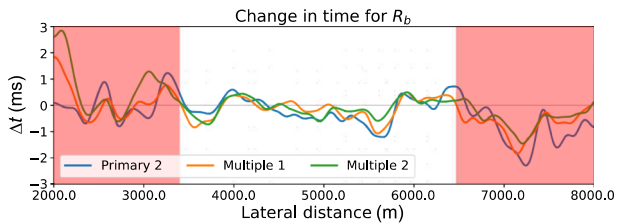


FIGURE 9 Time difference between the baseline and monitor time lag. The time lags between primary 1 and, respectively, primary 2 (blue), multiple 1 (orange) and multiple 2 (green) are shown. Note that the time shifts have been divided by 2 and 3, respectively, for multiple 1 and 2 to compare them with the primary shift. These differences were calculated in the isolated response; the red shading indicates the areas where the multiples are weaker, as shown in Figure 6b.

ples for this analysis. The red shading indicates the zone where the multiples are weak in amplitude shown in Figure 6b,e. The results for multiple 1 (in orange) and multiple 2 (in green) have been divided by a factor of 2 and 3, respectively, in order to have a fair comparison with the results from primary 2 (in blue), as these multiples probe the reservoir two or three times. Especially, between the red zones a strong match between the results of primaries and multiples in Figure 8 and the results in Figure 9 is noticed, which implies that the multiples are successfully estimated outside the recording time. The Marchenko-based isolation in Equation (4) predicts multiples based on only primary reflection data. This also happens in target area *b*, the primaries are used to predict the internal multiples between P_1 and P_2 .

The extracted time differences are compared to the results by Qu and Verschuur (2020), who retrieved approximate velocity changes. Some similarities are observed when looking at the sign of the change in velocity in Figure 15 of Qu and Verschuur (2020) and the differences in Figures 8 and 9, that is the negative time shifts coincide with an increase in velocity observed by Qu and Verschuur (2020). Additionally, based on approximations of the thickness of the reservoir (around 30 m) and the velocity changes (between -20 and 40 m/s), the time-lapse traveltimes differences are roughly estimated to lie somewhere between $+1$ ms and -1.5 ms, which is similar to the result found in this study. However, it is difficult to make one-on-one comparisons between the two studies as they consider different quantities that are not directly related to each other.

DISCUSSION

As shown in the previous section, Marchenko-based isolation of the reservoir response demonstrates promising results in improving time-lapse monitoring of field data. The reflection data are better defined (i.e., overburden interactions are reduced), hence providing a superior image of the target zone,

and time-lapse traveltimes differences can be extracted from the primaries and estimated multiples. In this section, some limitations and potential future advancements of the method will be discussed.

First, the current method only considers one time-lapse aspect of the data, namely traveltimes differences. Traditional time-lapse studies, oftentimes, also consider changes in the amplitudes in the form of amplitude versus offset or angle (AVO and AVA) analyses. Recent studies investigated how angle-dependent reflectivity can be obtained with the Marchenko method for lateral invariant media with constant velocities (Alfaraj et al., 2020). If this method can be further extended to include fully heterogeneous media, it will be able to provide new insights for Marchenko-based time-lapse monitoring with AVA.

These AVA time-lapse analyses generally consider changes in both P- and S-waves (Landrø, 2001). On the contrary, the Marchenko method is mostly used for the acoustic case only because the causality constraint is no longer ensured when elastic waves are introduced (da Costa Filho et al., 2014; Reinicke et al., 2020). This further complicates advanced AVA analysis on an isolated response, where only P-waves are considered.

The biggest obstacle to apply the Marchenko method to field data is the strict scaling requirements on the reflection data. This either calls for a carefully designed preprocessing scheme (Dukalski & Reinicke, 2022), which is not always feasible in the case of legacy data. Alternatively, a cost function can be minimized to find the optimal scaling; the approach that was considered in the current study. This technique suffered from the limited recording time of the data, causing most events to fall outside this limit. The cost function, therefore, was unable to converge to a minimum value.

Furthermore, the limited recording time also meant that the internal multiples of the target zone were not recorded. It was shown that these multiples could, in theory, be estimated accurately with the Marchenko method. The accuracy of this prediction on field data is harder to determine, where missing multiples of the target zone were predicted based on the primaries. While these multiples were not recorded in the data itself, once they were estimated with the Marchenko method, they still provided valuable insights into the time-lapse differences of the target zone.

The current study extracted time-lapse differences from the zero-offset gathers. Instead, multiple offsets can be combined to acquire traveltimes differences. On the one hand, the advantage of using multiple offsets is that the result is smoother over multiple offsets and thus more robust. On the other hand, the disadvantage is that the correlation windows have to be manually picked for each individual shot in the reflection response. While the inclusion of multiple offsets was explored for this study, it was found that the results did not significantly improve; hence, the zero-offset gathers were deemed suffi-

cient for the time-lapse analysis. However, the computation of velocity changes from the traveltimes differences demands multiple offsets to be used.

CONCLUSION

The purpose of this study was to apply Marchenko-based isolation of the reflection response on marine time-lapse data of the Troll field in order to extract traveltimes differences between the baseline and monitor surveys. To achieve this goal, an approximate velocity model was acquired and a suitable scaling of the reflection response was determined. Subsequently, the over- and underburden were removed by twice employing Marchenko redatuming, once above and once below the target zone. From this newfound response, two primaries and multiples were identified, and the time lag between these events was calculated. Finally, the baseline and monitor time lags were correlated to obtain the time-lapse traveltimes differences in the reservoir.

The methodology successfully eliminated imprints from signals originating outside of the target zone, resulting in an unobstructed view of the reservoir reflections. However, the target zone was relatively free of multiple reflections to begin with. It would, therefore, be interesting to test the methodology on data with stronger interference from internal multiples (such as a subsalt reservoir) to be able to conclusively determine the impact of the time-lapse Marchenko scheme. On the current data, the method was able to restore internal multiples lying outside of the recorded times. These were used together with the unobstructed primaries to retrieve the time-lapse traveltimes differences inside the reservoir.

These results open the door for future time-lapse applications of the Marchenko method, which ultimately can aid in our understanding of time-lapse changes in a reservoir caused by storage or production of resources inside the subsurface.

ACKNOWLEDGEMENTS


The authors thank Equinor (formerly Statoil A.S.) for providing the marine time-lapse data sets of the Troll Field. We are also grateful for insightful discussions with Eric Verschuur and Christian Reinicke. This research was funded by the European Research Council (ERC) under the European Union's Horizon 2020 research and innovation program (grant agreement no. 742703).

DATA AVAILABILITY STATEMENT


The algorithms associated with this research are available and can be accessed via the following URL: <https://gitlab.com/geophysicdelft/OpenSource>. The Troll field data are currently not publicly accessible but are available upon reasonable request and with the permission of Equinor. The synthetic


one-dimensional example in Figure 5 is available at <https://github.com/Ohnoj/Geophysics/tree/main/Marchenko1D>.

ORCID

Johno van IJsseldijk  <https://orcid.org/0000-0002-2846-1285>

Joeri Brackenhoff  <https://orcid.org/0000-0001-7697-1194>

Jan Thorbecke  <https://orcid.org/0000-0002-5219-0868>

Kees Wapenaar  <https://orcid.org/0000-0002-1620-8282>

REFERENCES

- Alfaraj, H., Brackenhoff, J. & Wapenaar, K. (2020) Obtaining angle-dependent reflectivity using the Marchenko redatuming method. In: *82nd EAGE annual conference & exhibition*. Houten, the Netherlands: European Association of Geoscientists & Engineers, pp. 1–3.
- Bannister, D., Roussanov, M. & Jones, C. (2005) Amplitude preserving Kirchhoff pre-stack time migration for time lapse processing on Troll West. In: *SEG technical program expanded abstracts 2005*. Houston, OK: Society of Exploration Geophysicists, pp. 1874–1877.
- Barkved, O.I. & Kristiansen, T. (2005) Seismic time-lapse effects and stress changes: examples from a compacting reservoir. *The Leading Edge*, 24(12), 1244–1248.
- Brackenhoff, J. (2016) Rescaling of incorrect source strength using Marchenko redatuming. Master's thesis, TU Delft repository, Delft University of Technology. <https://repository.tudelft.nl/islandora/object/uuid:0f0ce3d0-088f-4306-b884-12054c39d5da?collection=education> (accessed 11 August 2022).
- Brackenhoff, J., Thorbecke, J. & Wapenaar, K. (2019) Monitoring of induced distributed double-couple sources using Marchenko-based virtual receivers. *Solid Earth*, 10(4), 1301–1319.
- Broggini, F., Wapenaar, K., van der Neut, J. & Snieder, R. (2014) Data-driven Green's function retrieval and application to imaging with multidimensional deconvolution. *Journal of Geophysical Research: Solid Earth*, 119(1), 425–441.
- Chadwick, A., Williams, G., Delepine, N., Clochard, V., Labat, K., Sturton, S., Buddensiek, M.-L., Dillen, M., Nickel, M., Lima, A.L., et al., (2010) Quantitative analysis of time-lapse seismic monitoring data at the Sleipner CO₂ storage operation. *The Leading Edge*, 29(2), 170–177.
- da Costa Filho, C.A., Ravasi, M., Curtis, A. & Meles, G.A. (2014) Elastodynamic Green's function retrieval through single-sided Marchenko inverse scattering. *Physical Review E*, 90, 063201.
- Dadashpour, M., Landrø, M. & Kleppe, J. (2007) Nonlinear inversion for estimating reservoir parameters from time-lapse seismic data. *Journal of Geophysics and Engineering*, 5(1), 54–66.
- Dukalski, M. & Reinicke, C. (2022) Marchenko multiple elimination using conventional vs advanced 3-D to 2-D conversion on marine data. In: *83rd EAGE annual conference & exhibition*, volume 2022. Houten, the Netherlands: European Association of Geoscientists & Engineers, pp. 1–5.
- Grêt, A., Snieder, R., Aster, R.C. & Kyle, P.R. (2005) Monitoring rapid temporal change in a volcano with coda wave interferometry. *Geophysical Research Letters*, 32(6)
- Hatchell, P.J. & Bourne, S.J. (2005) Measuring reservoir compaction using time-lapse timesteps. In: *SEG technical program expanded abstracts 2005*. Houston, TX: Society of Exploration Geophysicists, pp. 2500–2503.

- Hellem, T., Kjemperud, A. & Ovrebo, O. (1986) The Troll Field: a geological/geophysical model established by the PL085 Group. In: *Habitat of hydrocarbons on the Norwegian continental shelf: Proceedings of an international conference (habitat of hydrocarbons – Norwegian oil and gas finds)*, London: Graham & Trotman, pp. 217–238.
- Ivancic, M., Bergmann, P., Kummerow, J., Huang, F., Juhlin, C. & Lueth, S. (2018) Monitoring CO₂ saturation using time-lapse amplitude versus offset analysis of 3D seismic data from the Ketzin CO₂ storage pilot site, Germany. *Geophysical Prospecting*, 66(8), 1568–1585.
- Johnston, D.H., McKenny, R.S., Verbeek, J. & Almond, J. (1998) Time-lapse seismic analysis of Fulmar Field. *The Leading Edge*, 17(10), 1420–1428.
- Kabir, M.N. & Verschuur, D. (1995) Restoration of missing offsets by parabolic Radon transform. *Geophysical Prospecting*, 43(3), 347–368.
- Landrø, M. (2001) Discrimination between pressure and fluid saturation changes from time-lapse seismic data. *Geophysics*, 66(3), 836–844.
- Landrø, M. & Stammeijer, J. (2004) Quantitative estimation of compaction and velocity changes using 4D impedance and traveltimes changes. *Geophysics*, 69(4), 949–957.
- Lumley, D.E. (2001) Time-lapse seismic reservoir monitoring. *Geophysics*, 66(1), 50–53.
- MacBeth, C., Amini, H. & Izadian, S. (2020) Review paper: methods of measurement for 4D seismic post-stack time shifts. *Geophysical Prospecting*, 68(9), 2637–2664.
- MacBeth, C., Mangriotis, M.-D. & Amini, H. (2019) Review paper: Post-stack 4D seismic time-shifts: interpretation and evaluation. *Geophysical Prospecting*, 67(1), 3–31.
- Pevzner, R., Shulakova, V., Kepic, A. & Urosevic, M. (2011) Repeatability analysis of land time-lapse seismic data: CO₂CRC Otway pilot project case study. *Geophysical Prospecting*, 59(1), 66–77.
- Qu, S. & Verschuur, D.J. (2020) Simultaneous joint migration inversion for high-resolution imaging/inversion of time-lapse seismic datasets. *Geophysical Prospecting*, 68(4), 1167–1188.
- Reinicke, C., Dukalski, M. & Wapenaar, K. (2020) Comparison of monotonicity challenges encountered by the inverse scattering series and the Marchenko demultiple method for elastic waves. *Geophysics*, 85(5), Q11–Q26.
- Singh, J., Curtis, A., Zhao, Y., Cartwright-Taylor, A. & Main, I. (2019) Coda wave interferometry for accurate simultaneous monitoring of velocity and acoustic source locations in experimental rock physics. *Journal of Geophysical Research: Solid Earth*, 124(6), 5629–5655.
- Slob, E., Wapenaar, K., Broggin, F. & Snieder, R. (2014) Seismic reflector imaging using internal multiples with Marchenko-type equations. *Geophysics*, 79(2), S63–S76.
- Snieder, R., Grêt, A., Douma, H. & Scales, J. (2002) Coda wave interferometry for estimating nonlinear behavior in seismic velocity. *Science*, 295(5563), 2253–2255.
- Staring, M., Pereira, R., Douma, H., van der Neut, J. & Wapenaar, K. (2018) Source-receiver Marchenko redatuming on field data using an adaptive double-focusing method. *Geophysics*, 83(6), S579–S590.
- Thorbecke, J., Slob, E., Brackenhoff, J., van der Neut, J. & Wapenaar, K. (2017) Implementation of the Marchenko method. *Geophysics*, 82(6), WB29–WB45.
- Trani, M., Arts, R., Leeuwenburgh, O. & Brouwer, J. (2011) Estimation of changes in saturation and pressure from 4D seismic AVO and time-shift analysis. *Geophysics*, 76(2), C1–C17.
- Tura, A., Barker, T., Cattermole, P., Collins, C., Davis, J., Hatchell, P., Koster, K., Schutjens, P. & Wills, P. (2005) Monitoring primary depletion reservoirs using amplitudes and time shifts from high-repeat seismic surveys. *The Leading Edge*, 24(12), 1214–1221.
- van Dalen, K.N., Mikesell, T.D., Ruigrok, E.N. & Wapenaar, K. (2015) Retrieving surface waves from ambient seismic noise using seismic interferometry by multidimensional deconvolution. *Journal of Geophysical Research: Solid Earth*, 120(2), 944–961.
- van der Neut, J., Thorbecke, J., Wapenaar, K. & Slob, E. (2015) Inversion of the multidimensional Marchenko equation. In: *77th EAGE conference and exhibition 2015*, volume 2015. Houten, the Netherlands: European Association of Geoscientists & Engineers, pp. 1–5.
- van der Neut, J. & Wapenaar, K. (2016) Adaptive overburden elimination with the multidimensional Marchenko equation. *Geophysics*, 81(5), T265–T284.
- van der Neut, J., Wapenaar, K., Thorbecke, J. & Slob, E. (2015) Practical challenges in adaptive Marchenko imaging. In: *SEG technical program expanded abstracts 2015*. Houston, TX: Society of Exploration Geophysicists, pp. 4505–4509.
- van IJsseldijk, J., van der Neut, J., Thorbecke, J. & Wapenaar, K. (2023) Extracting small time-lapse traveltimes changes in a reservoir using primaries and internal multiples after Marchenko-based target zone isolation. *Geophysics*, 88(2), R135–R143.
- van IJsseldijk, J. & Wapenaar, K. (2021) Discerning small time-lapse traveltimes changes by isolating the seismic response of a reservoir using the Marchenko method. In: *First international meeting for applied geoscience & energy expanded abstracts*. Houston, TX: Society of Exploration Geophysicists, pp. 3449–3453.
- Verschuur, D.J., Berkhout, A. & Wapenaar, K. (1992) Adaptive surface-related multiple elimination. *Geophysics*, 57(9), 1166–1177.
- Wapenaar, K., Brackenhoff, J., Dukalski, M., Meles, G., Reinicke, C., Slob, E., Staring, M., Thorbecke, J., van der Neut, J. & Zhang, L. (2021) Marchenko redatuming, imaging, and multiple elimination and their mutual relations. *Geophysics*, 86(5), WC117–WC140.
- Wapenaar, K. & Staring, M. (2018) Marchenko-based target replacement, accounting for all orders of multiple reflections. *Journal of Geophysical Research: Solid Earth*, 123(6), 4942–4964.
- Wapenaar, K., Thorbecke, J., Van Der Neut, J., Broggin, F., Slob, E. & Snieder, R. (2014) Marchenko imaging. *Geophysics*, 79(3), WA39–WA57.
- Wapenaar, K., Thorbecke, J., van der Neut, J., Slob, E. & Snieder, R. (2017) Review paper: Virtual sources and their responses, Part II: data-driven single-sided focusing. *Geophysical Prospecting*, 65(6), 1430–1451.
- Wapenaar, K. & van IJsseldijk, J. (2020) Employing internal multiples in time-lapse seismic monitoring, using the Marchenko method. In: *82nd EAGE annual conference & exhibition*, volume 2020. Houten, the Netherlands: European Association of Geoscientists & Engineers, pp. 1–5.

How to cite this article: van IJsseldijk, J., Brackenhoff, J., Thorbecke, J. & Wapenaar, K. (2024) Time-lapse applications of the Marchenko method on the Troll field. *Geophysical Prospecting*, 72, 1026–1036. <https://doi.org/10.1111/1365-2478.13463>