

# Terdelt's [Entropic] Backgarden

Supervisors:  
Rosie van der Schans  
Lex van Deudekom  
Leeke Reinders

Graduation Program:  
Urban Architecture

Graduation Date:  
5th Nov 2024

Slide Presentation

TU Delft



# *Terdelt's Backgarden*

*\_Left to finish*



*Humpty Dumpty sat on a wall,  
Humpty dumpty had a great fall.  
All the king's horses  
and all the king's men...  
Couldn't put Humpty together again*

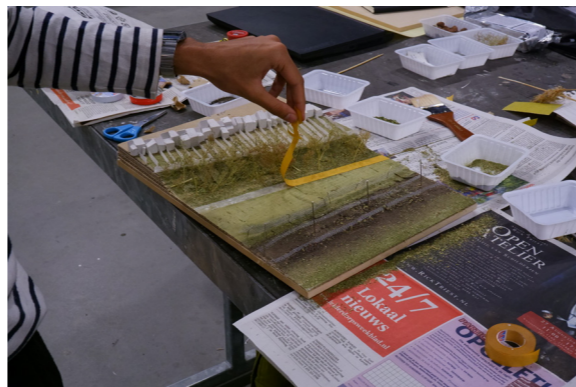
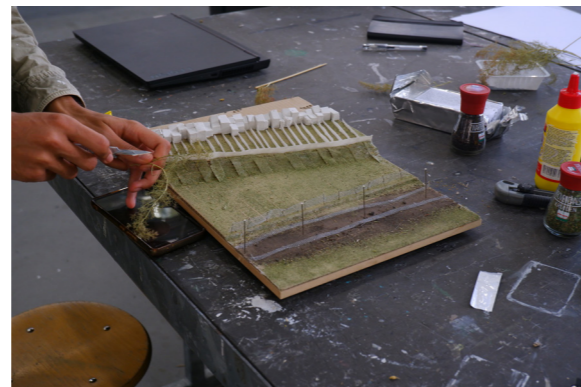
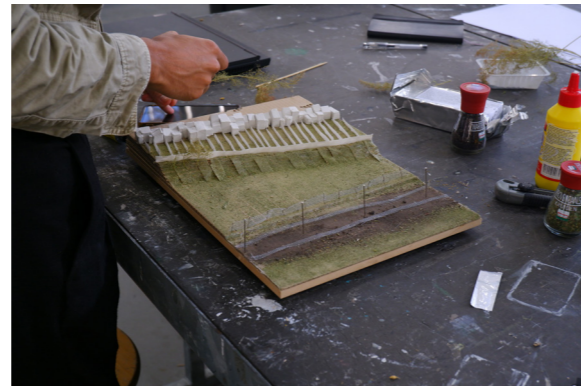
*by Lewis Carroll*



## *Humpty Dumpty*

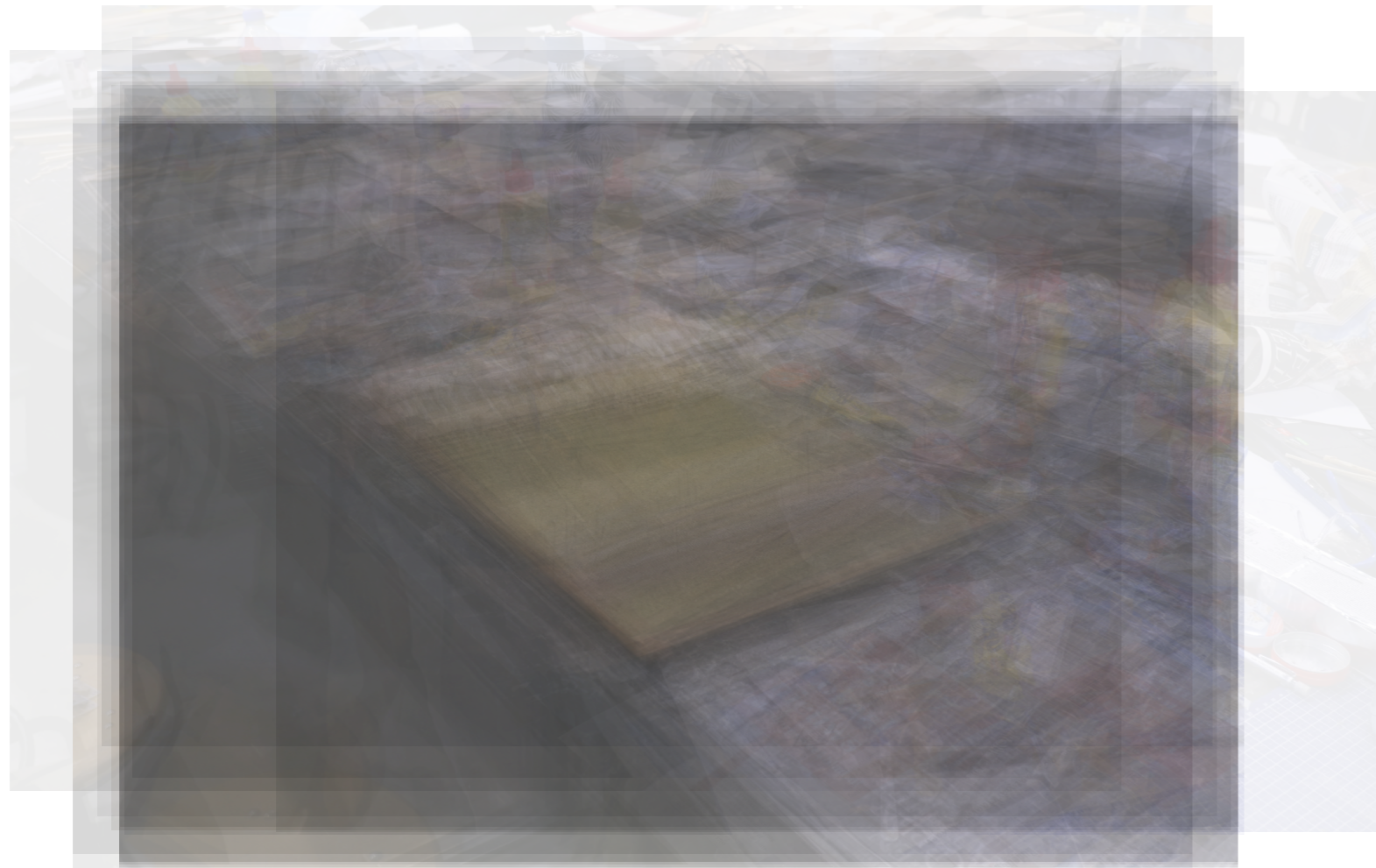
*Humpty Dumpty sat on a wall.  
Humpty dumpty had a great fall.  
All the king's hours  
and all the king's men...  
Couldn't put Humpty together again*

*by Lewis Carroll*



# *Landscape*

A mosaic of memories  
Textures and function  
becomes shifting ground



Overlapping of process photo

## *Site/non-site*

The Nonsite (an indoor earthwork) is a three dimensional logical picture that is abstract, yet it represents an actual site in N.J. (The Pine Barrens Plains). It is by this three dimensional metaphor that one site can represent another site which does not resemble it—thus The Nonsite.

-Robert Smithson



January



October

## *Site/non-site*

The Nonsite (an indoor earthwork) is a three dimensional logical picture that is abstract, yet it represents an actual site in N.J. (The Pine Barrens Plains). It is by this three dimensional metaphor that one site can represent another site which does not resemble it—thus The Nonsite.

-Robert Smithson



## *Visions of the Future*

The site exists in fragments  
Not limited to a model  
there's more to it  
than its physical form





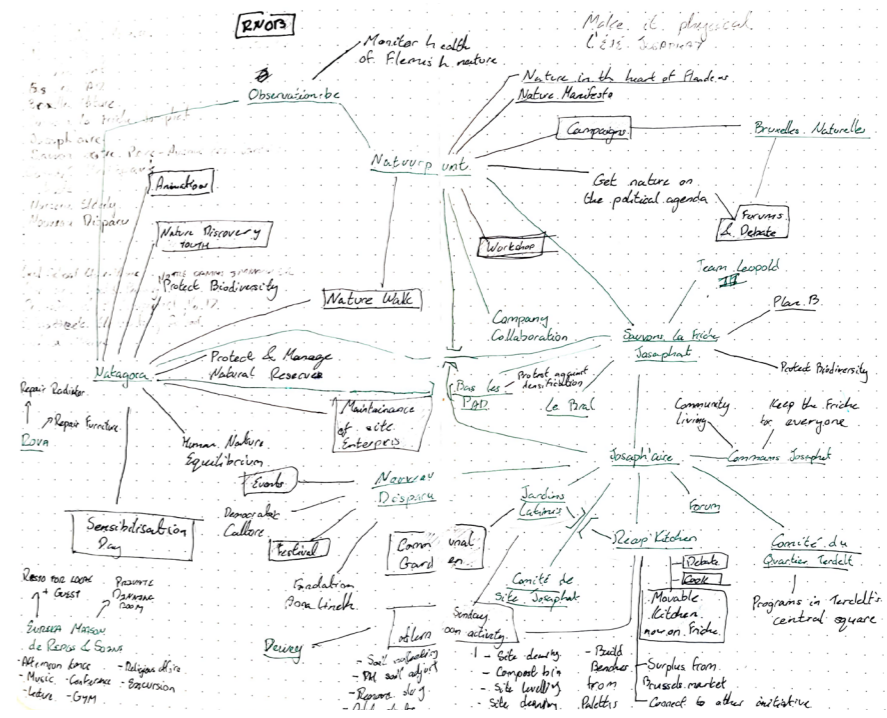
## *Visions of the Future*

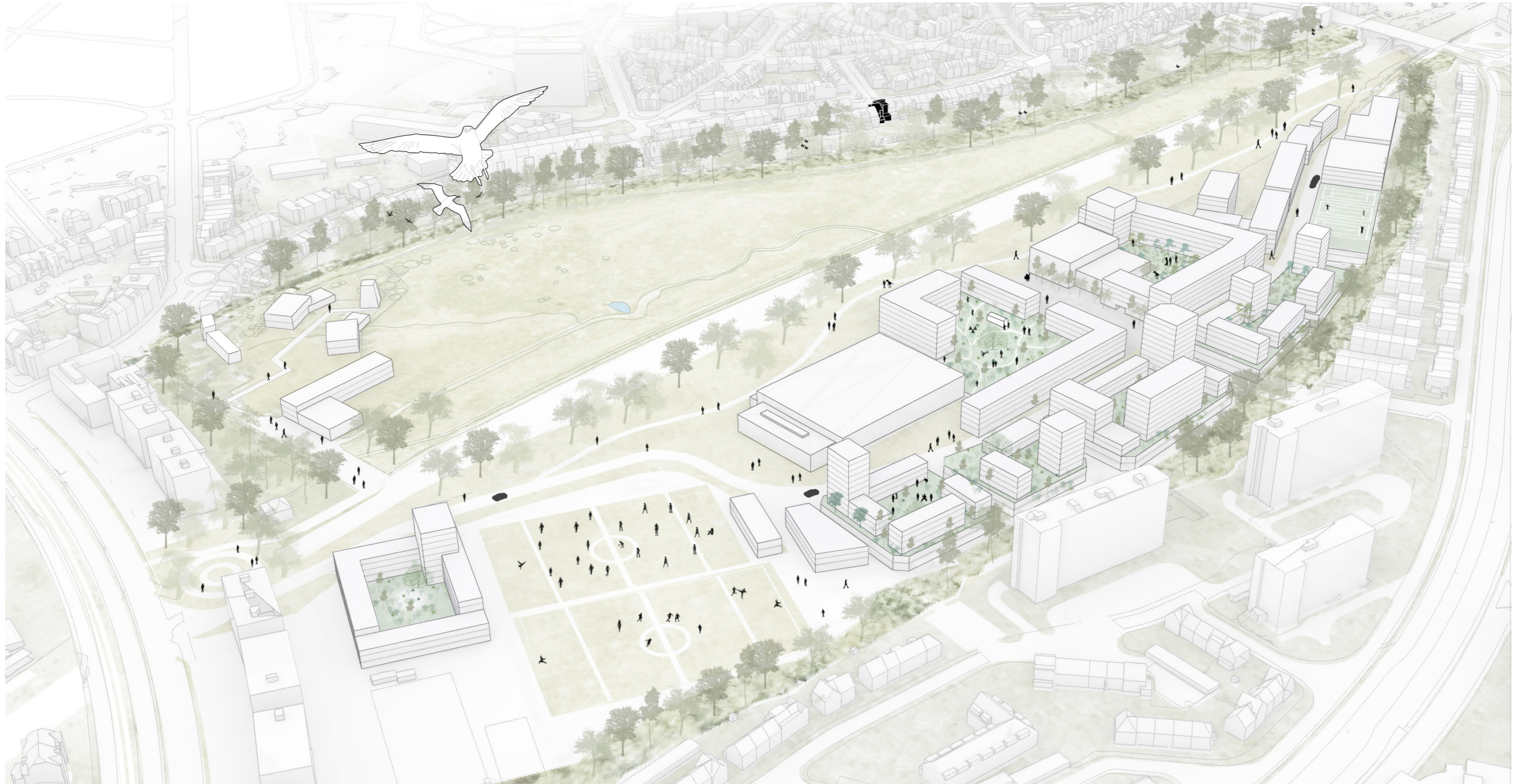
The site exists in fragments  
Not limited to a model  
there's more to it  
than its physical form

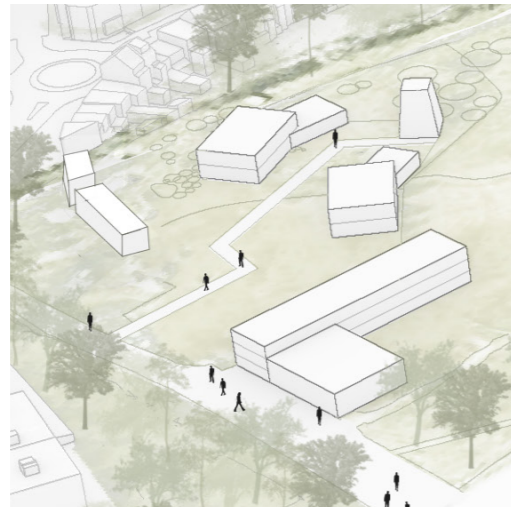


## *Visions of the Future*

The site exists in fragments  
Not limited to a model  
there's more to it  
than its physical form



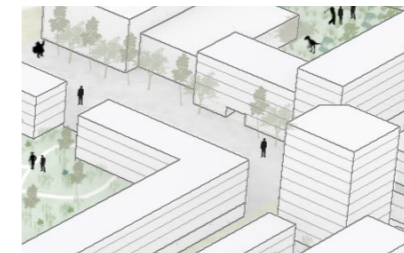




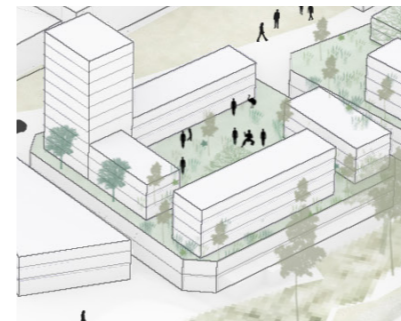
Educational



Old Neighbourhood



Urban Space



New Neighbourhood

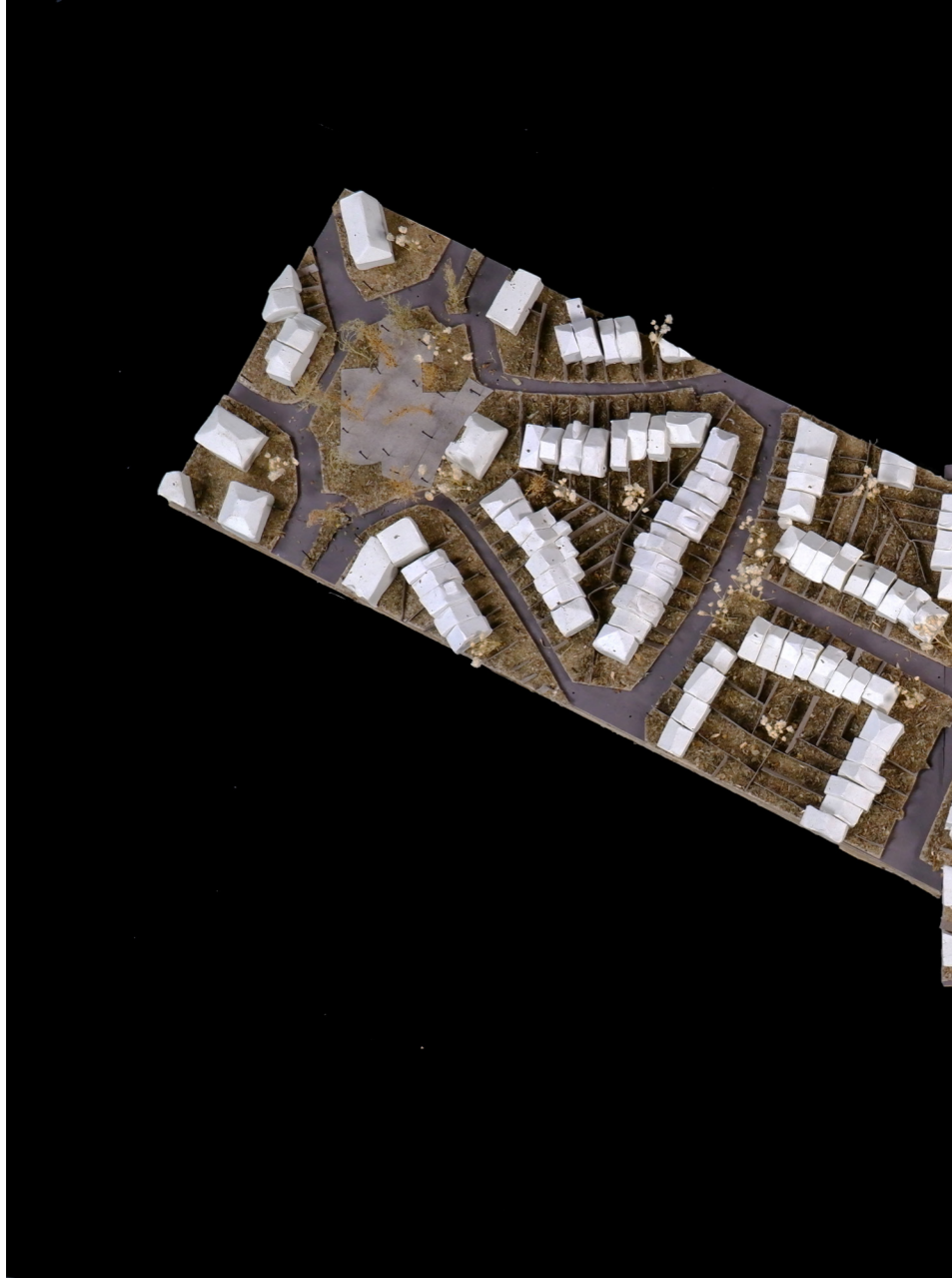


Old Neighbourhood



## *Terdelt*

A very planned neighbourhood with clear lines and clear space. A perfect cosy place in the public front and a quiet neighbourhood in the private back



*How to connect?*

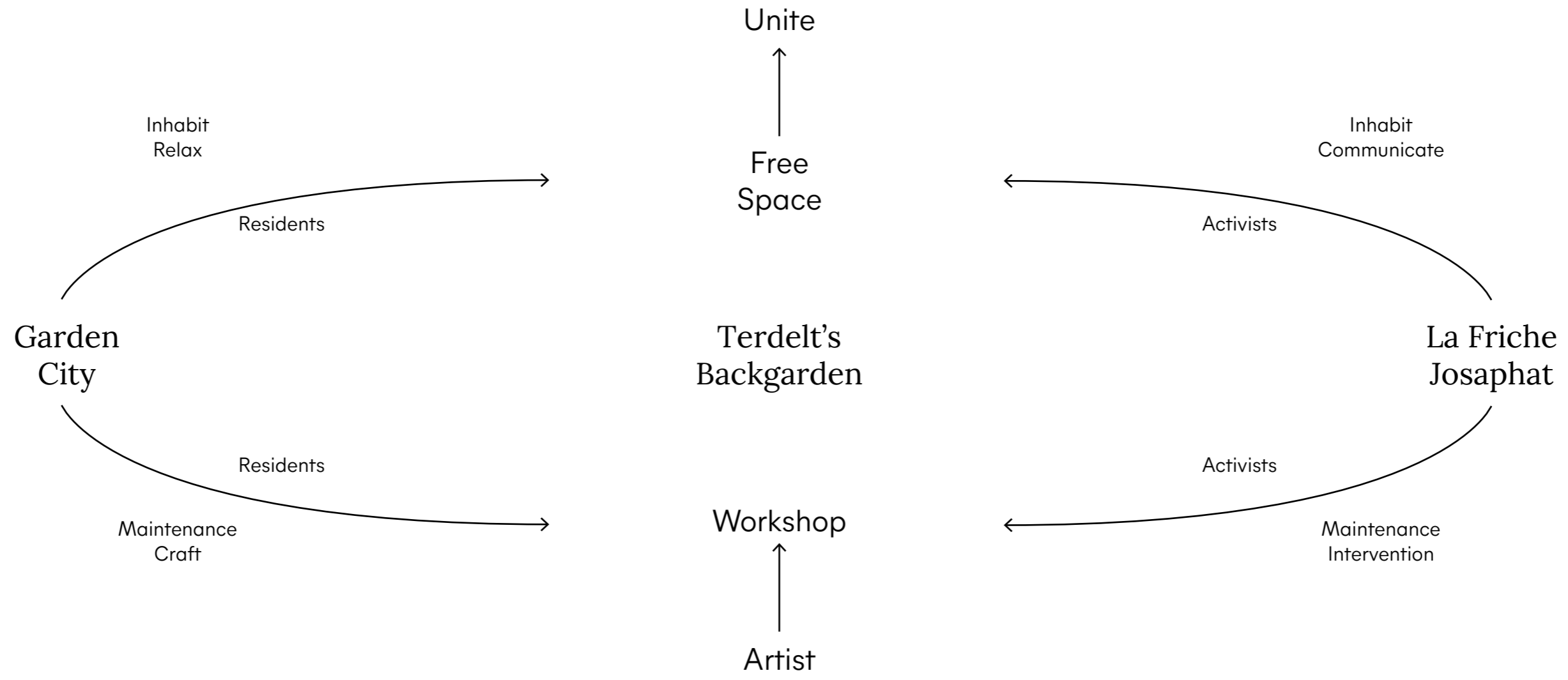
From the planned to the unplanned.  
The kept and the wild. What are  
those noises

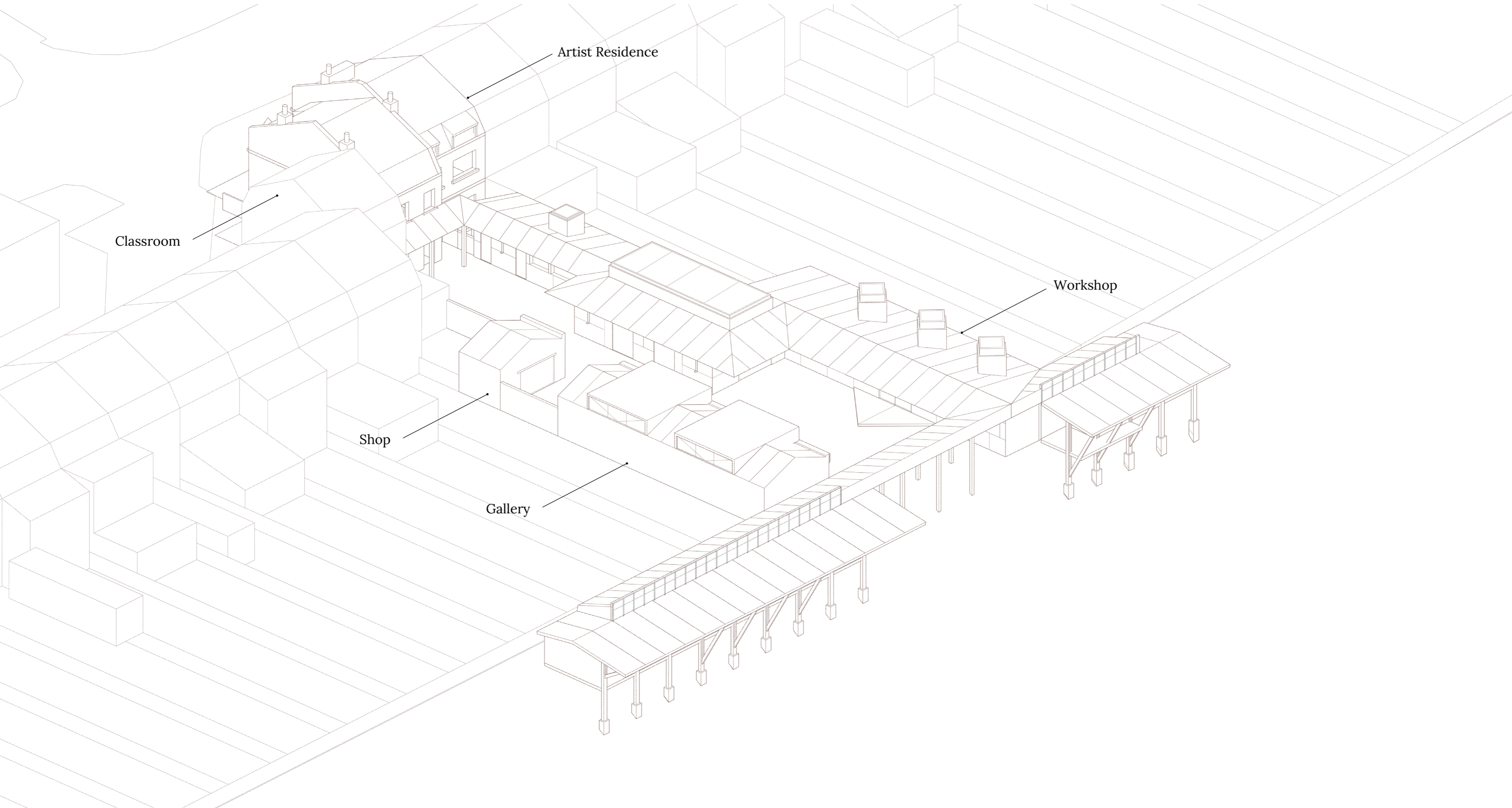




## *A Bridge*

A front garden for the friche. One where  
all the actors can come together with  
their own series of texture





Artist Residence

Classroom

Workshop

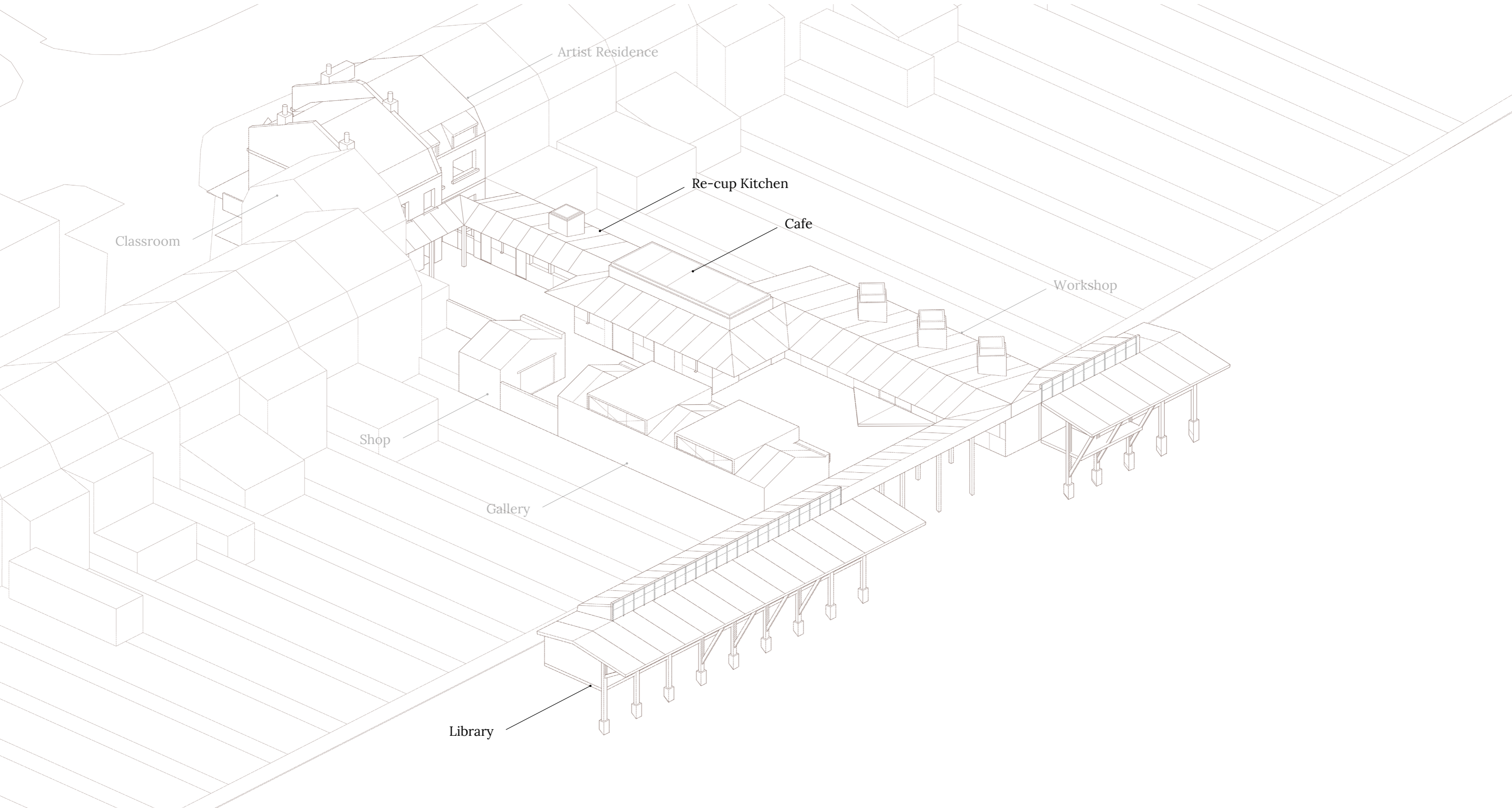
Shop

Gallery

Salman Cassimally

Urban Architecture

\_Terdelt's Backgarden



Artist Residence

Re-cup Kitchen

Cafe

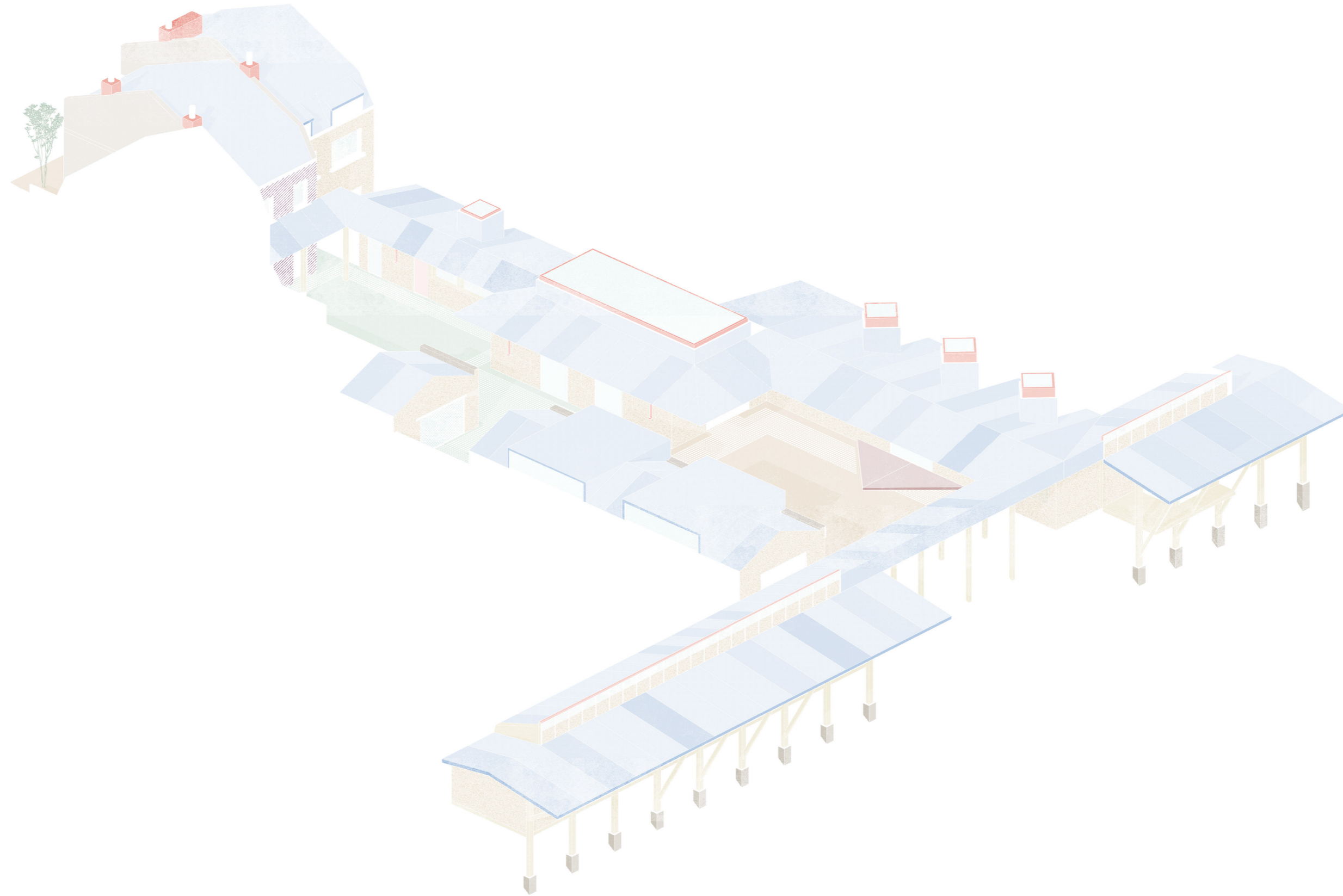
Workshop

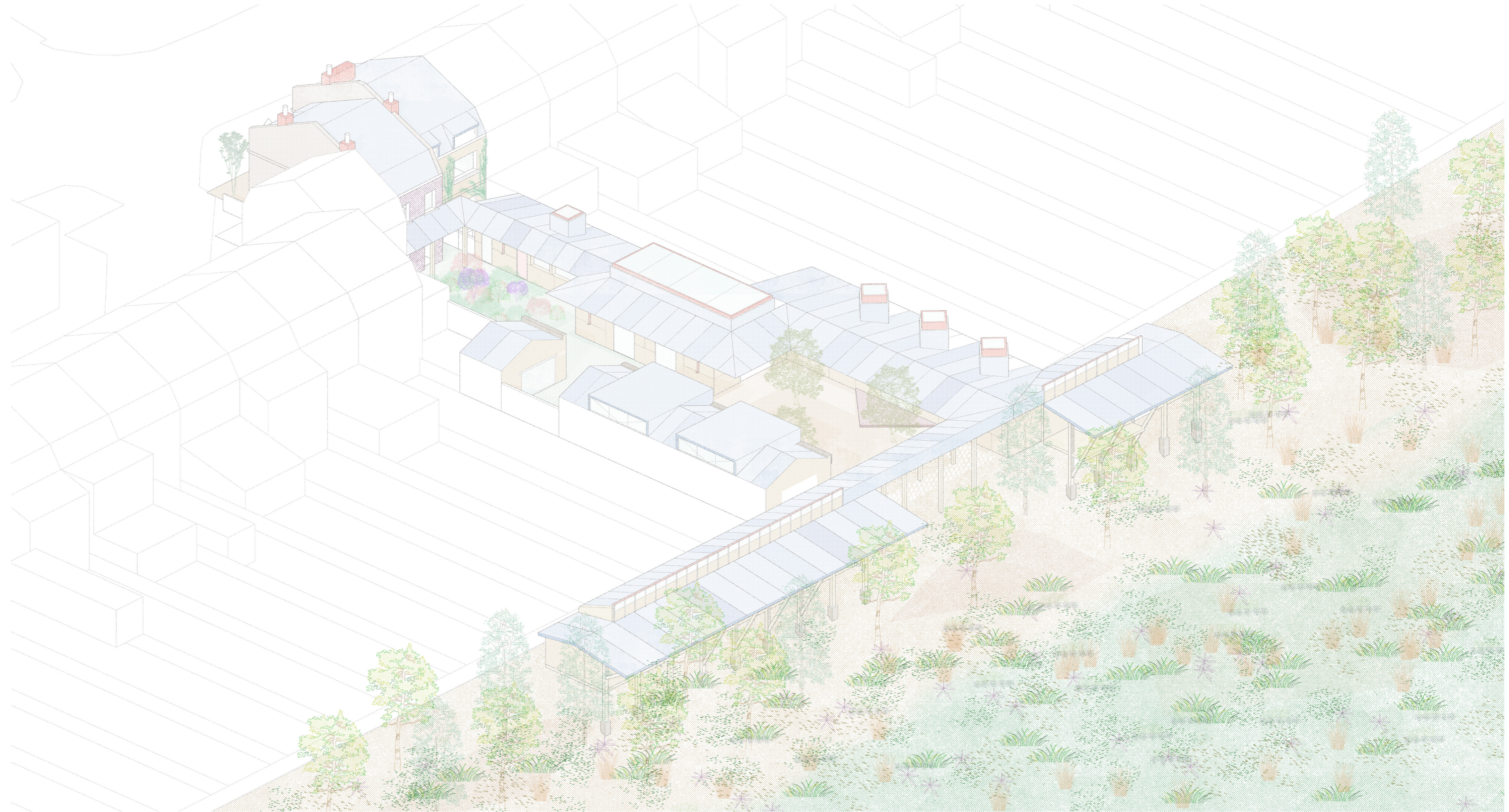
Classroom

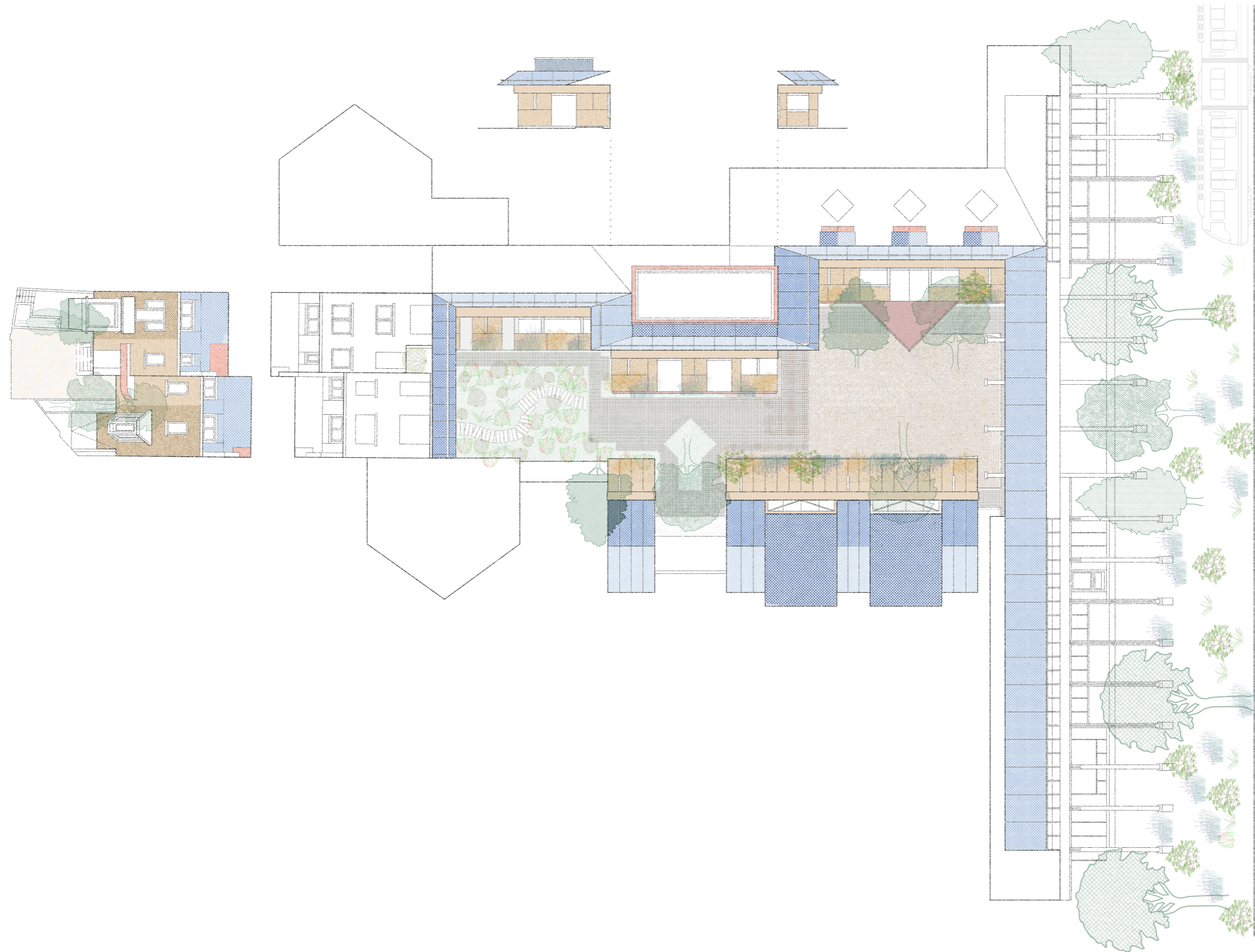
Shop

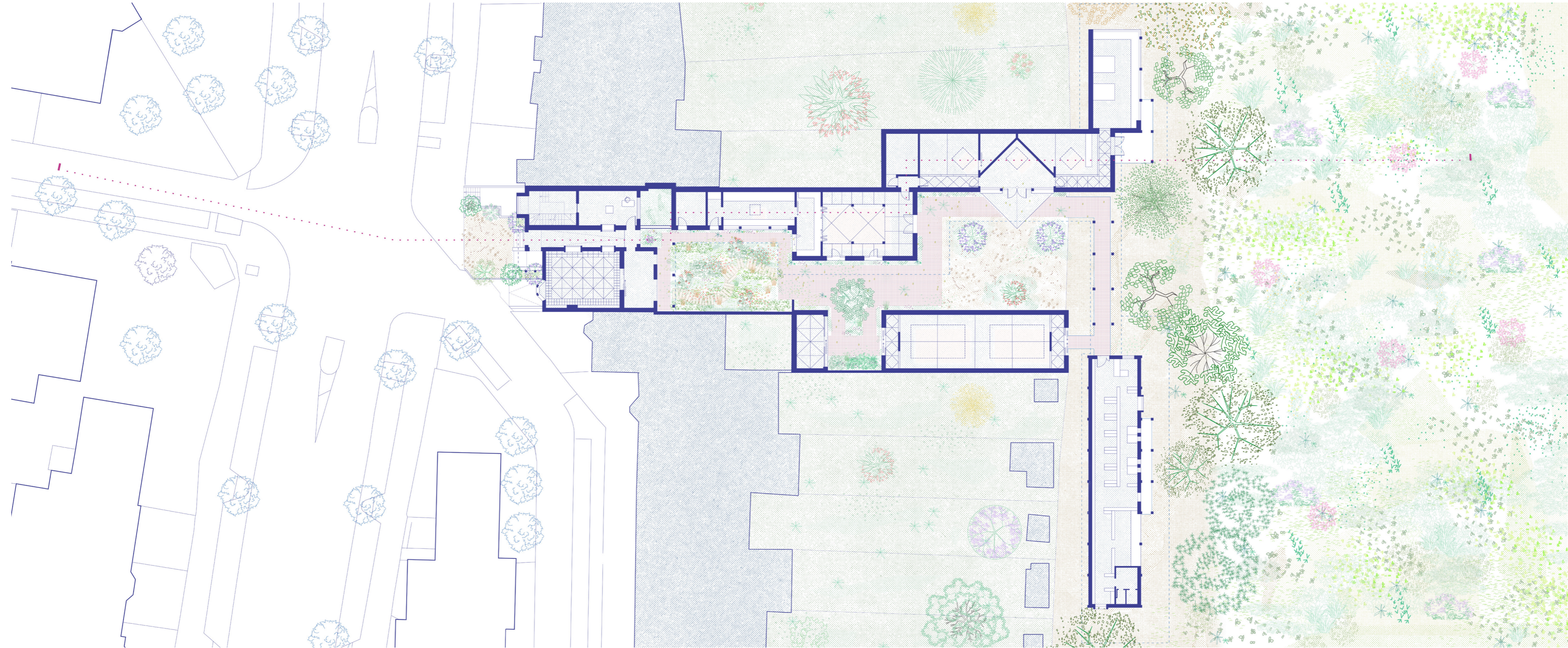
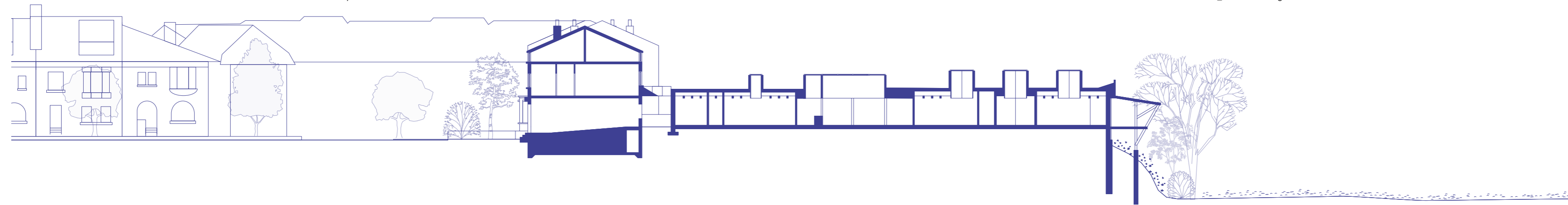
Gallery

Library



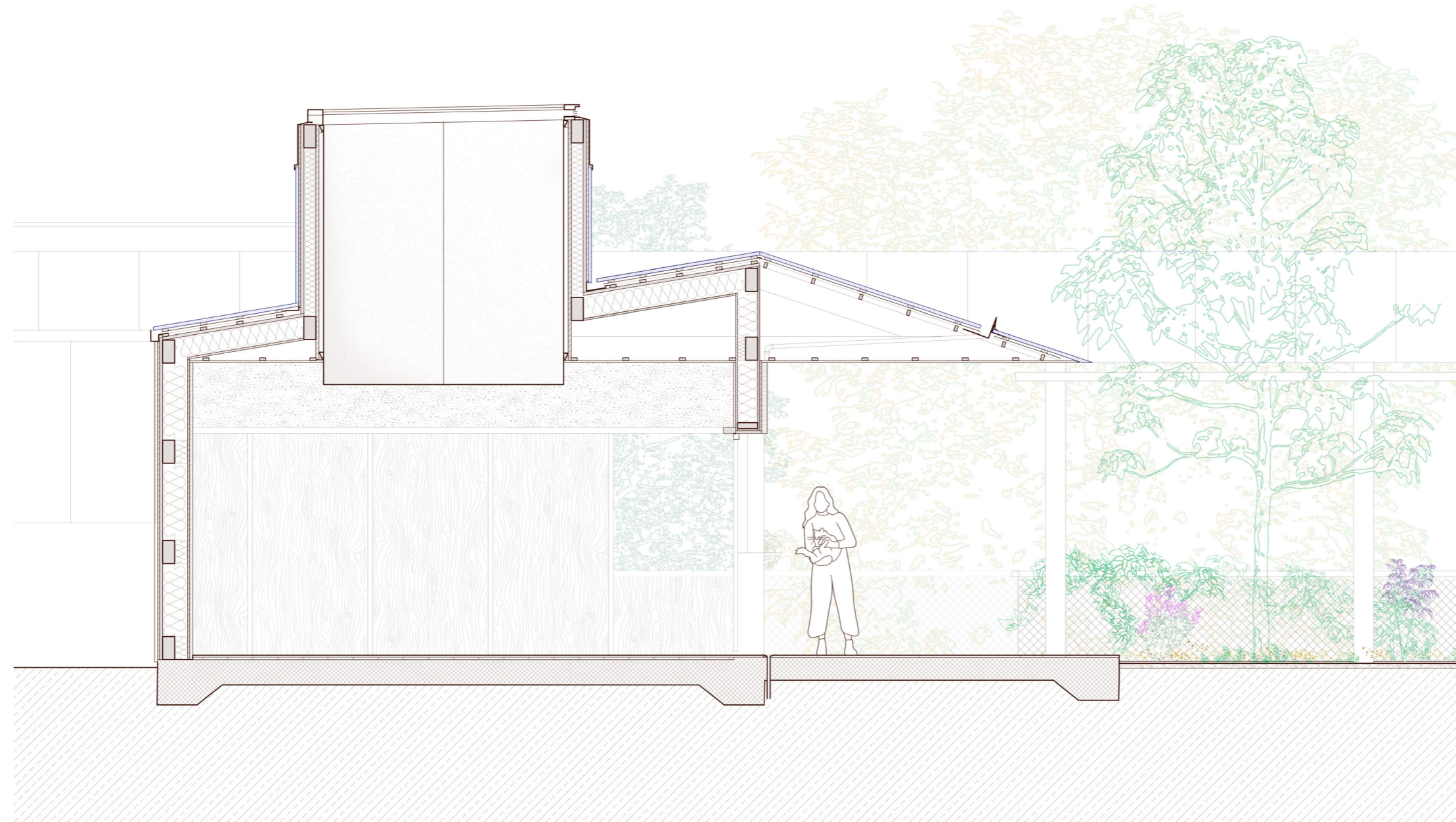


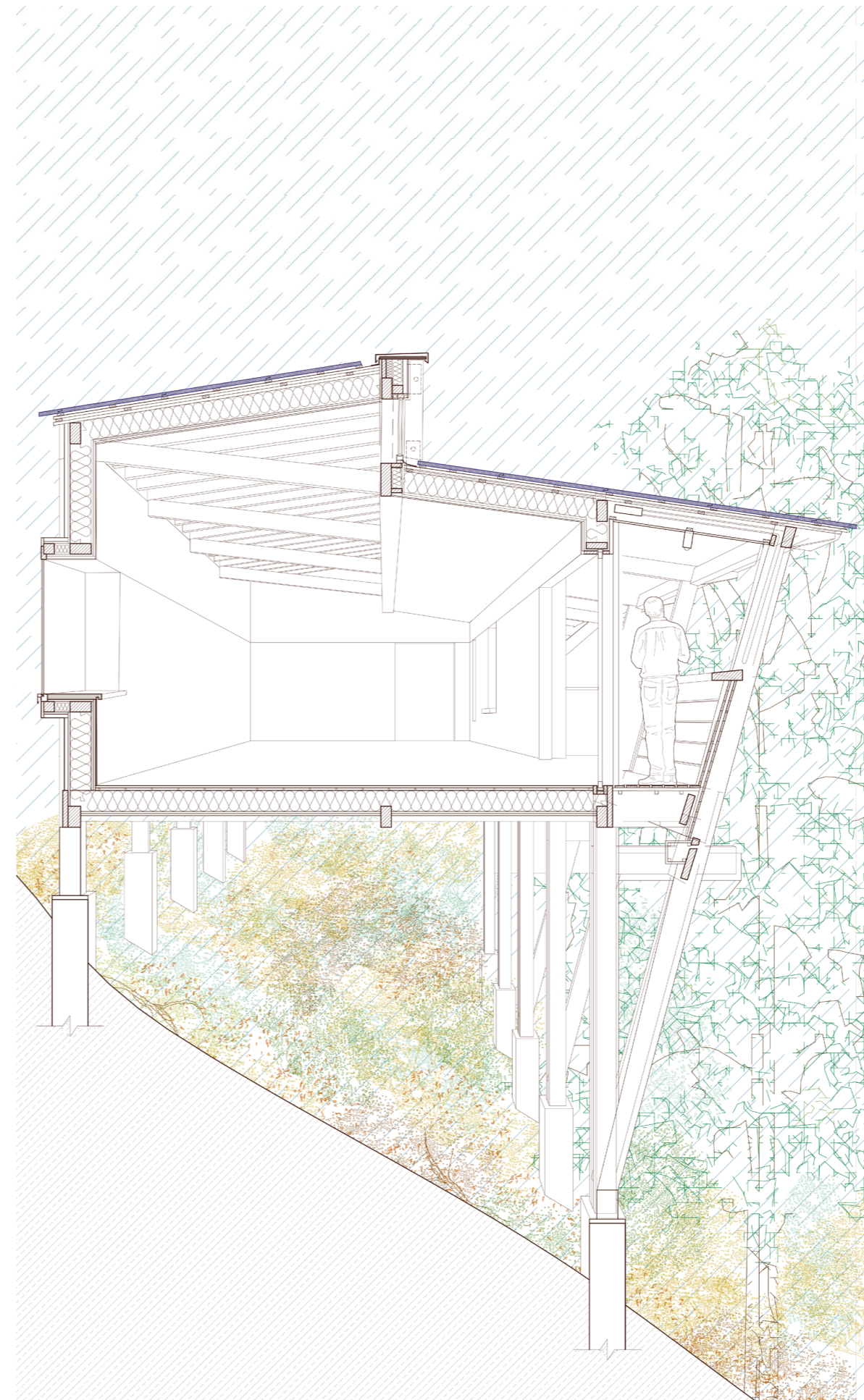














## *Affect Architecture*

Building affects



## *Affect Architecture*

Building affects  
We affect them and  
they affect us in turn



## *Affect Architecture*

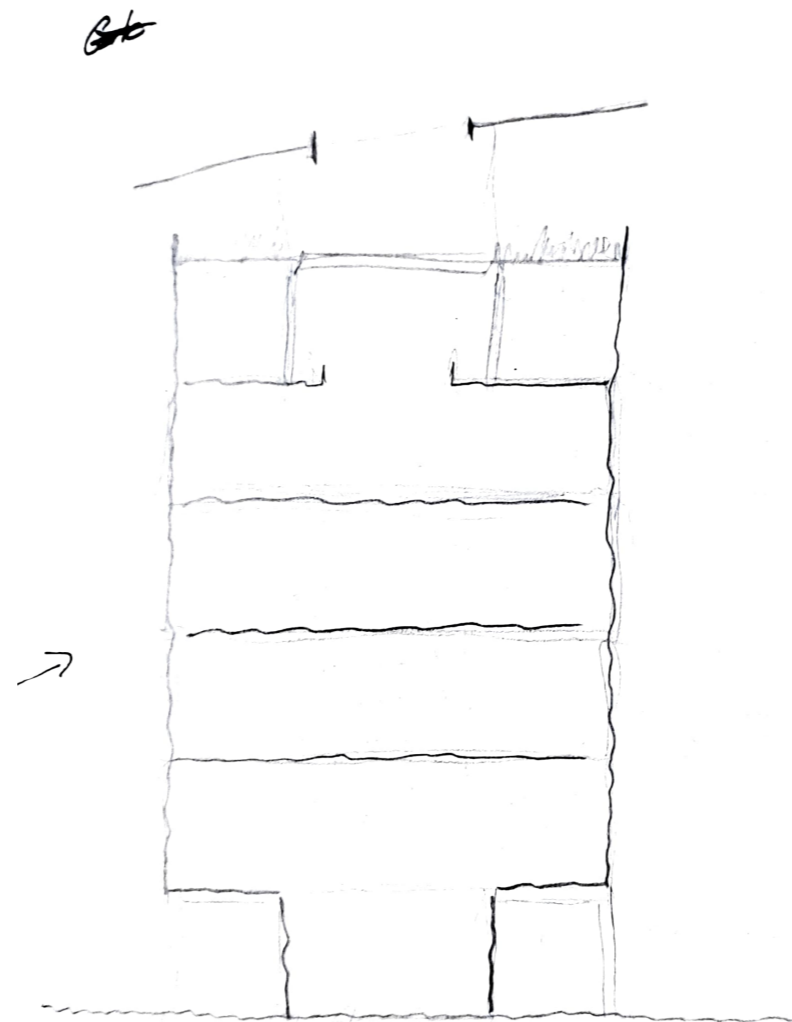
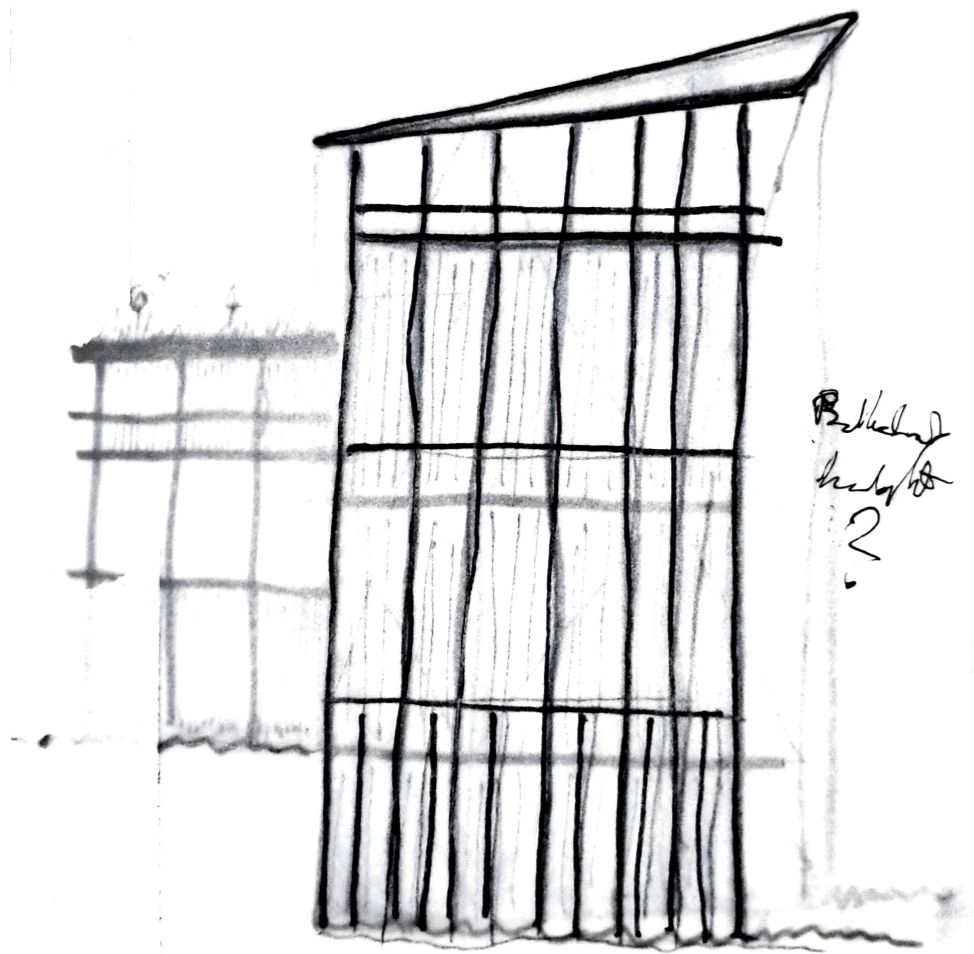
Building affects  
We affect them and  
they affect us in turn  
Creating a place to grow with



## *Growing in Entropy*

What is a landscape?  
How human how non-human?  
Regardless, it still changes  
the represent and the represented





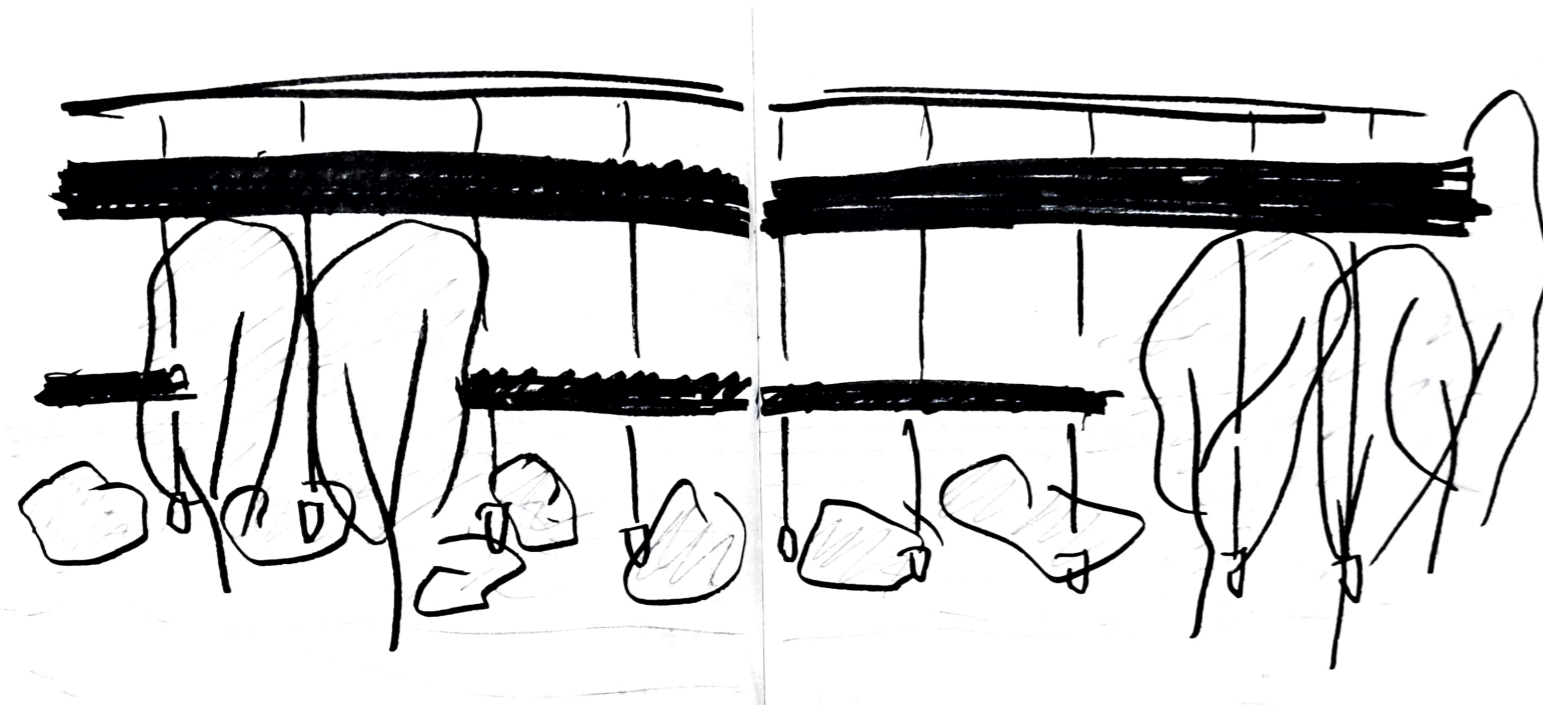
## *A tower*

The first idea  
Connecting grounds  
A skin of greens



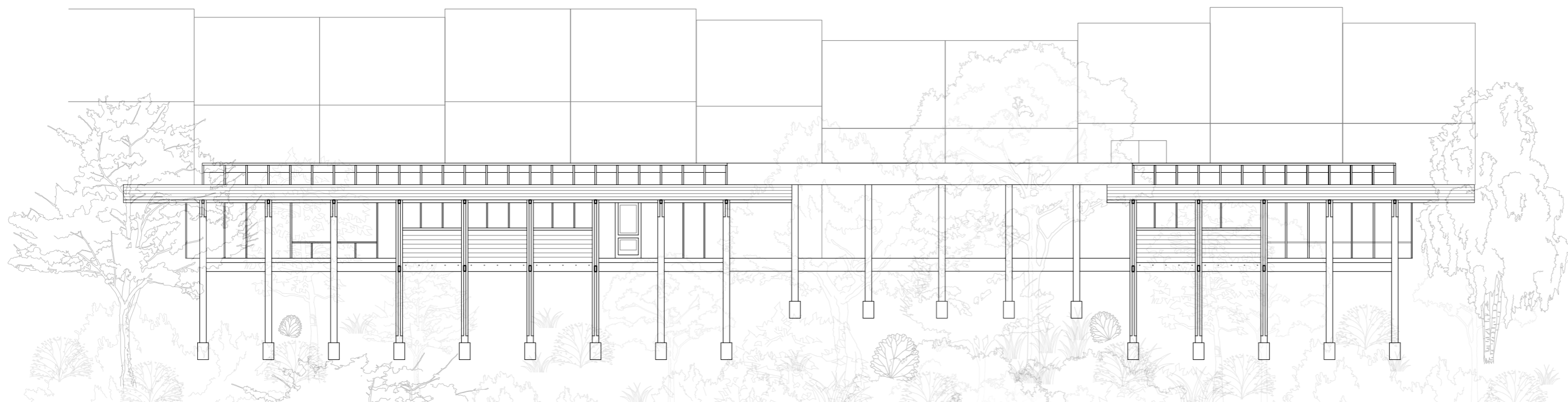
## *A tower in entropy*

The first idea didnt survive  
Connected past and new (now old)  
for new idea



*A tower in entropy*

Yet with its fall  
the ground is primed  
for something better





*A tower in entropy*

Even what was discarded returns  
Somehow better

## *Entropy*

The decay of entropy does not erase its definition; it enriches it. Like an organism, it sediments the ground. The flower of entropy does not bloom forever, but gives rise to a field of flowers—each at the world's mercy, only to die in its tender embrace. This sedimented ground, rich in history and temporal beauty, embodies a dynamic evolution, timelessly in flux. Entropy transforms, rising anew from its ashes, only to be caught, once again, by itself.



STREET VIEW

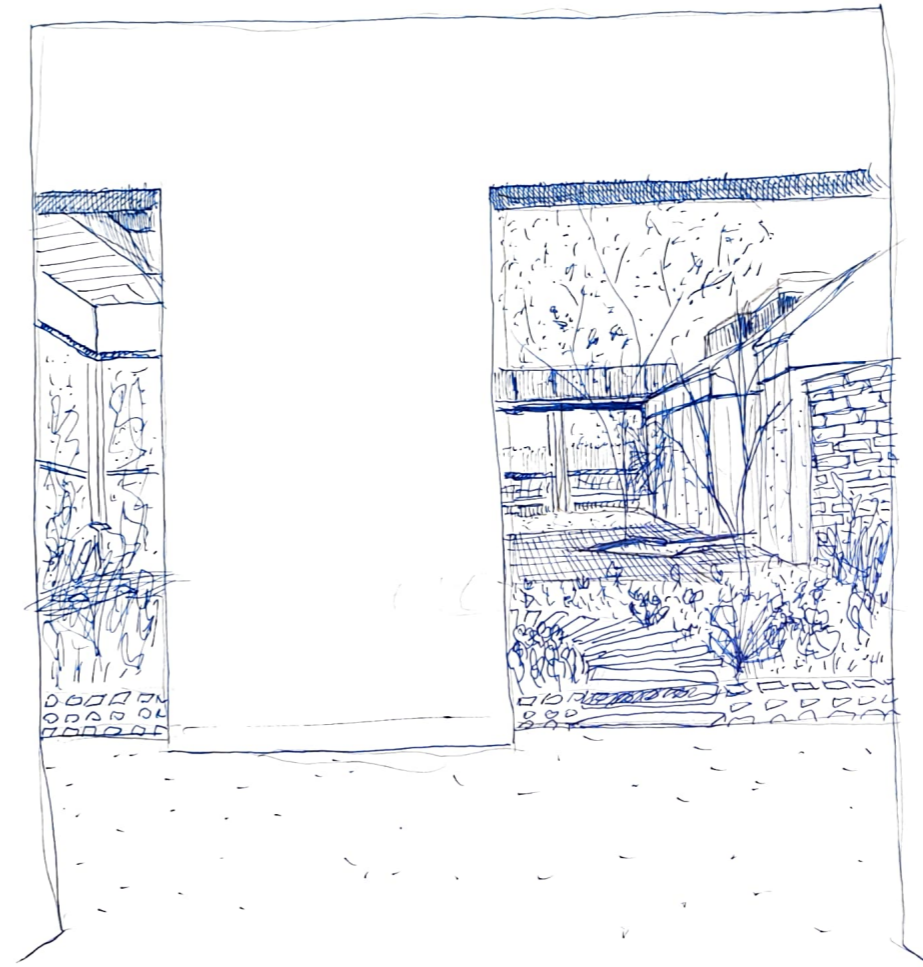


Entrance  
Tunnel











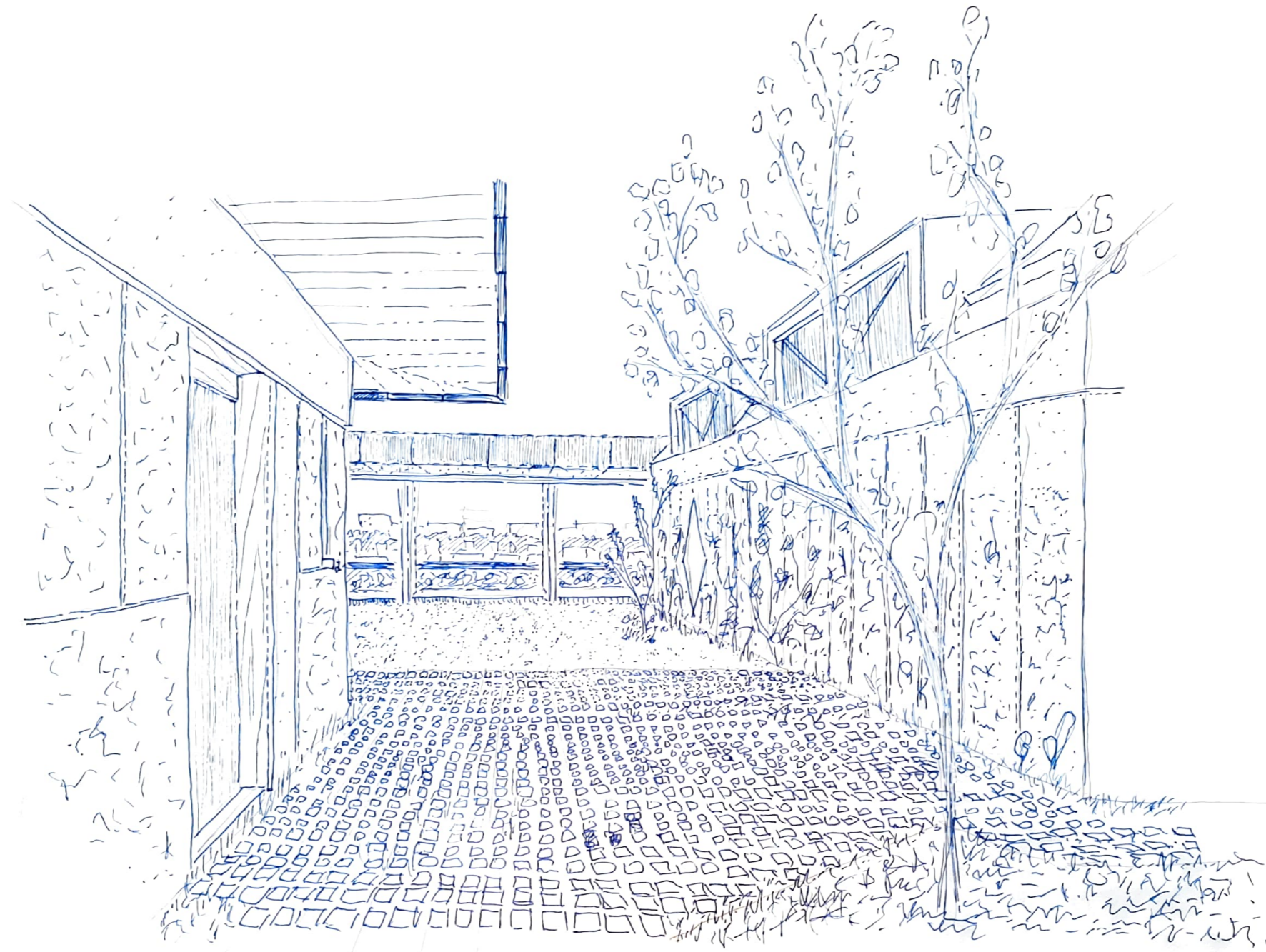


*New & Old  
Backgarden*







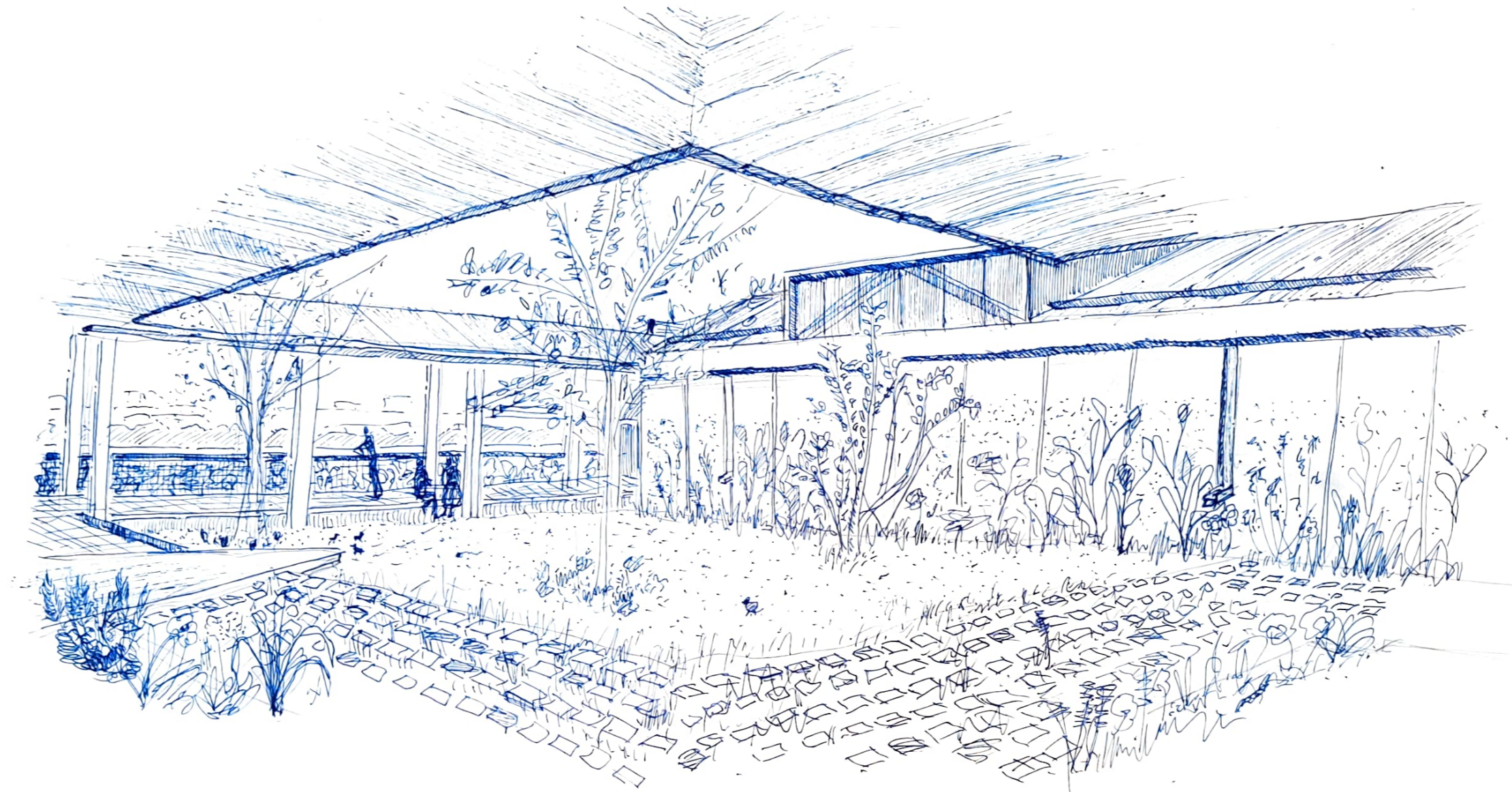


In the Middle

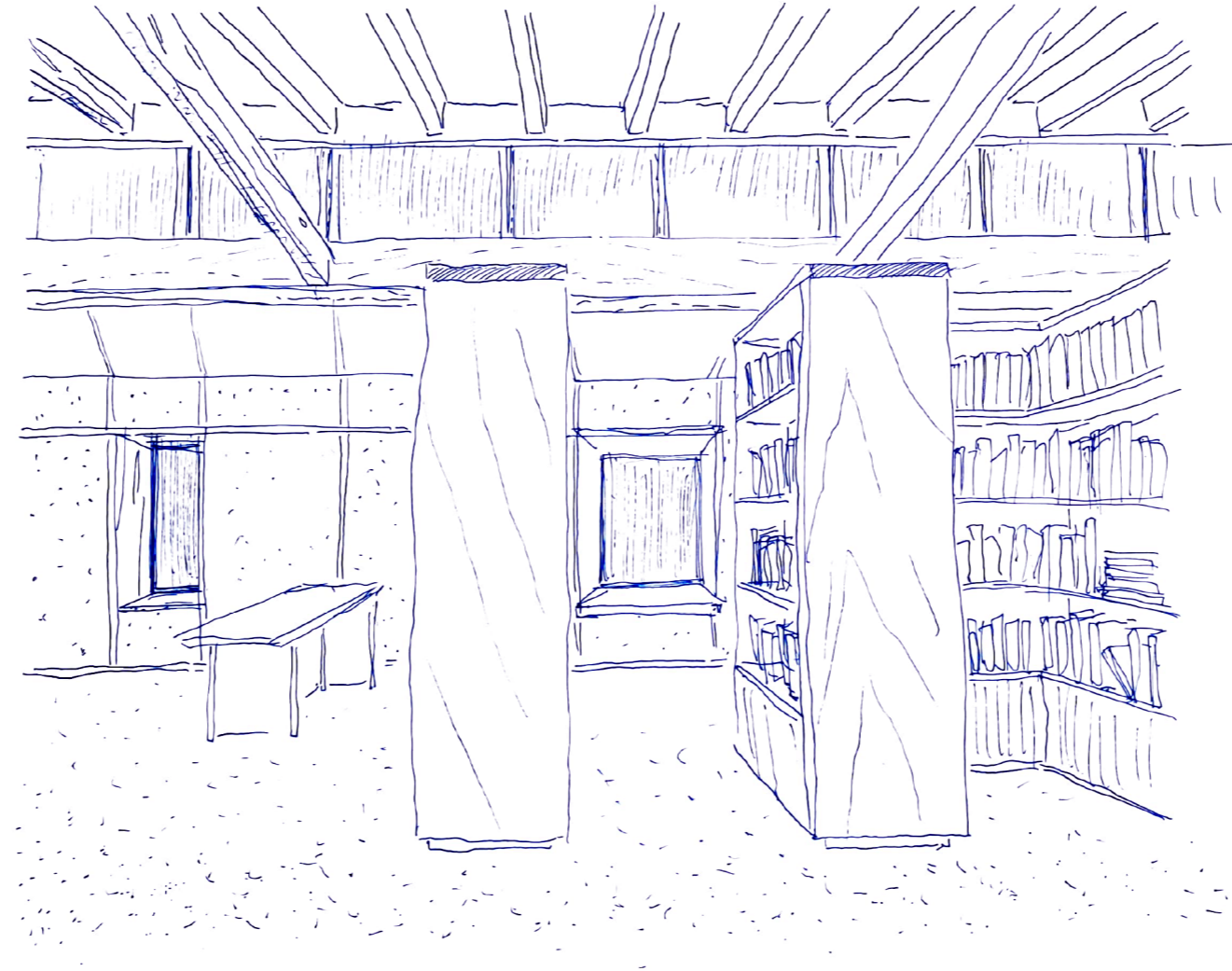


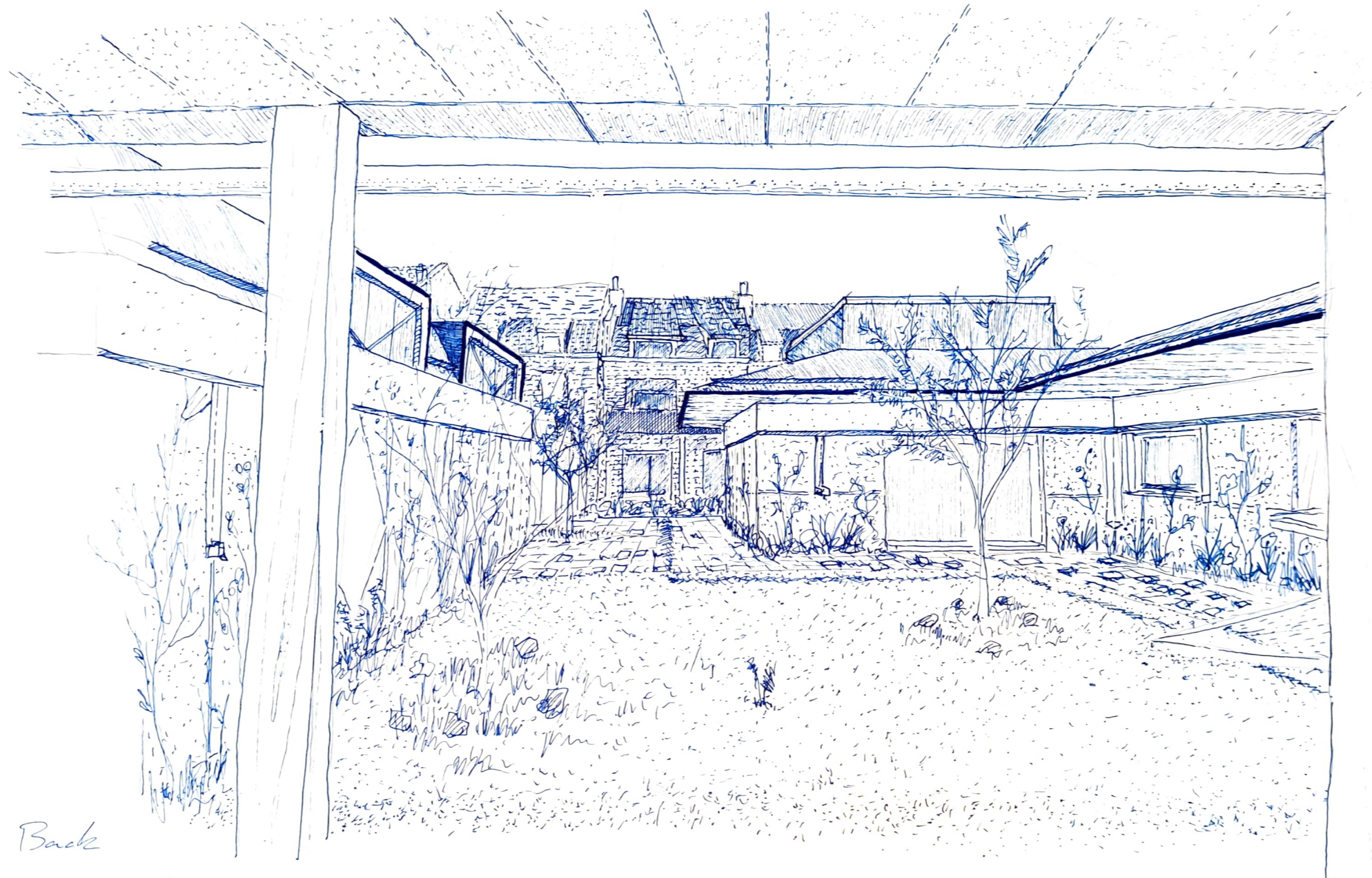




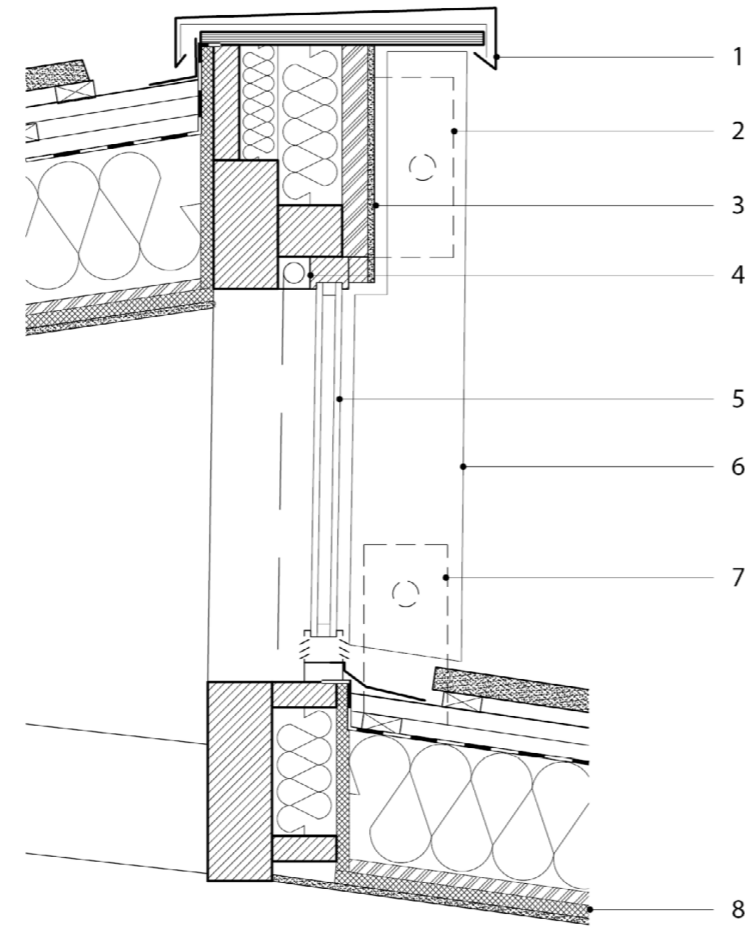


INNERMOST COURTYARD

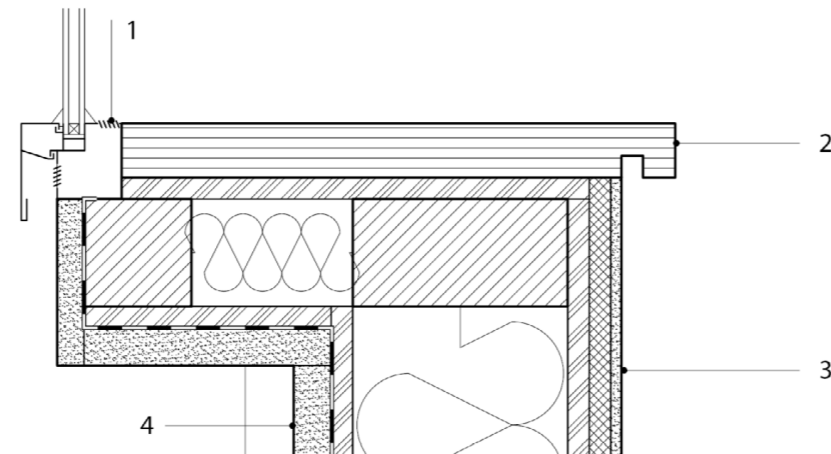




*Looking Back*

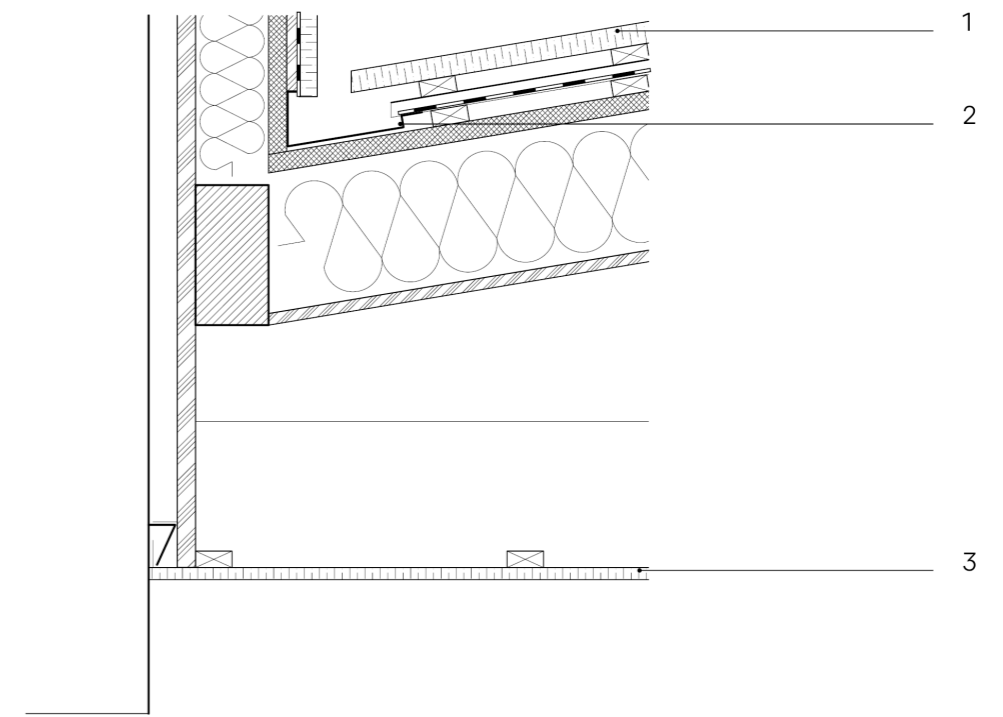
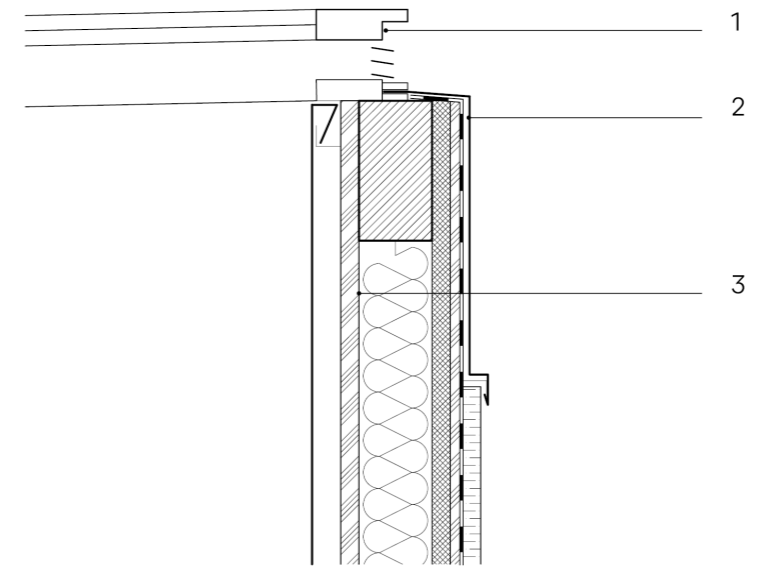
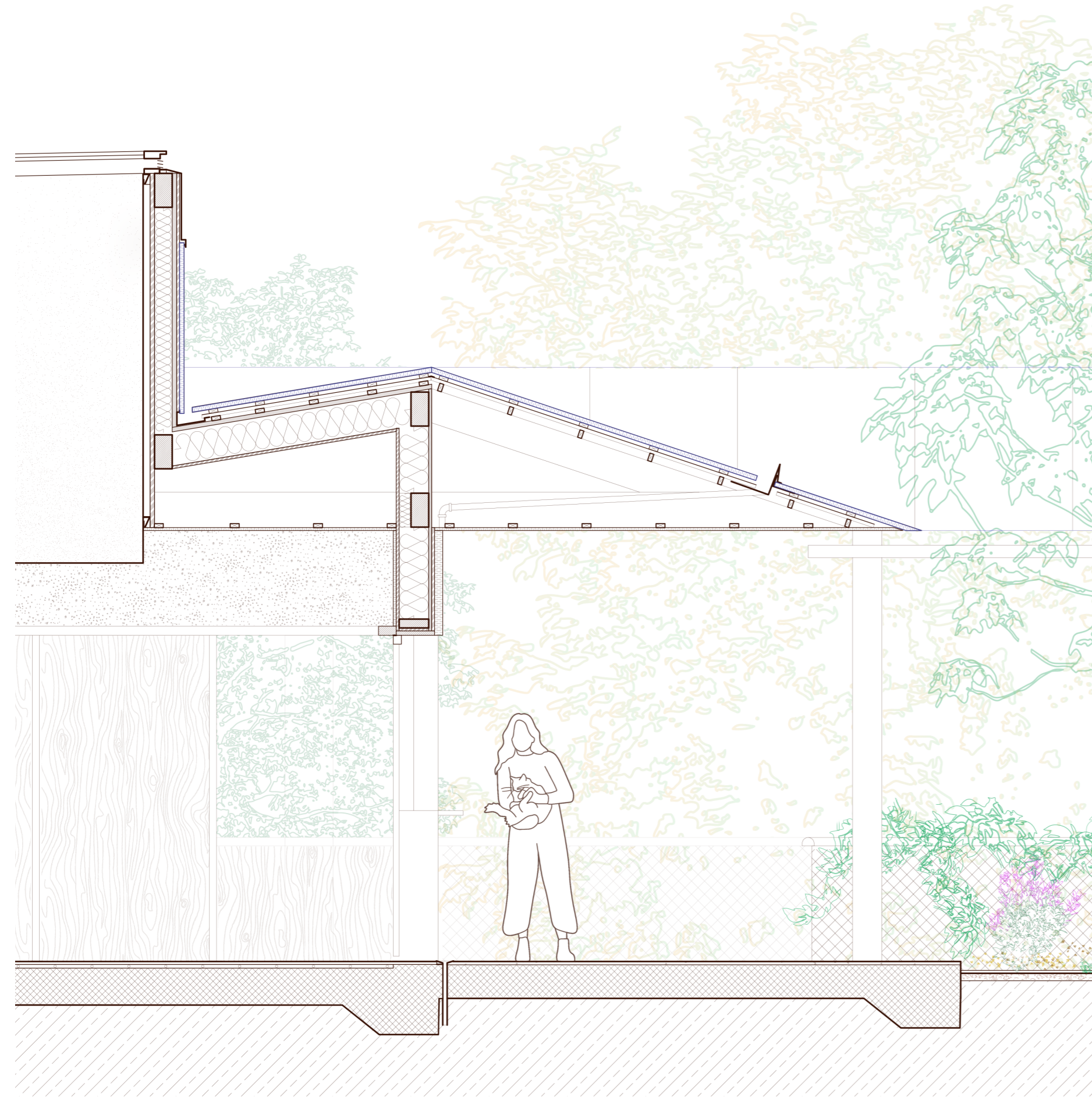


- 1 Copper copping
- 2 Steel bracket connecting to main frame
- 3 Cork w. natural finish attached to cladding board
- 4 Roller blind - Closes automatically at night
- 5 Double glazed window w. timber frame
- 6 Decorative timber column
- 7 Steel bracket connecting timber to main frame
- 8 Cork cladding, attached to Wood fiber board insulation, attached to OSB panel



- 1 Double glazed window w. timber frame
- 2 Hardwood with shadow gap
- 3 Cork w. natural finish, attached to wood fiber insulation, attached to OSB panel
- 4 Cork panel, with Underlay membrane open to diffusion attached to OSB panel

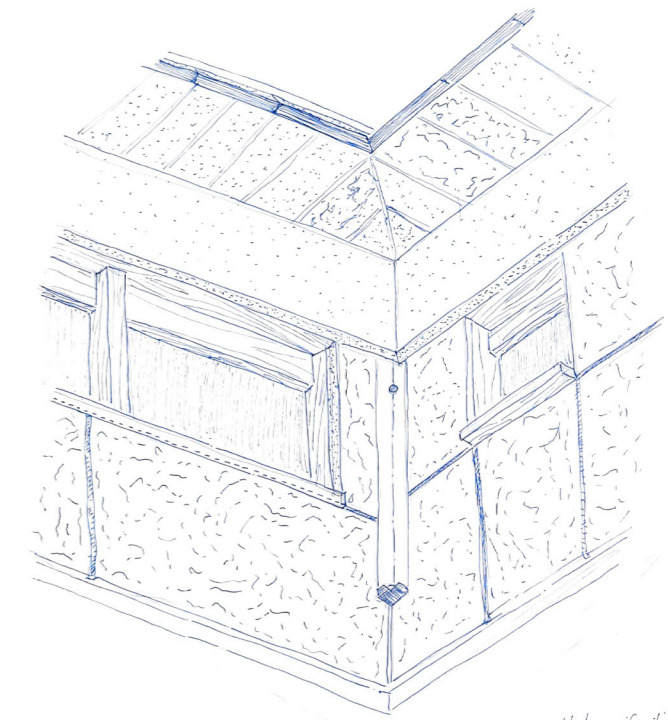
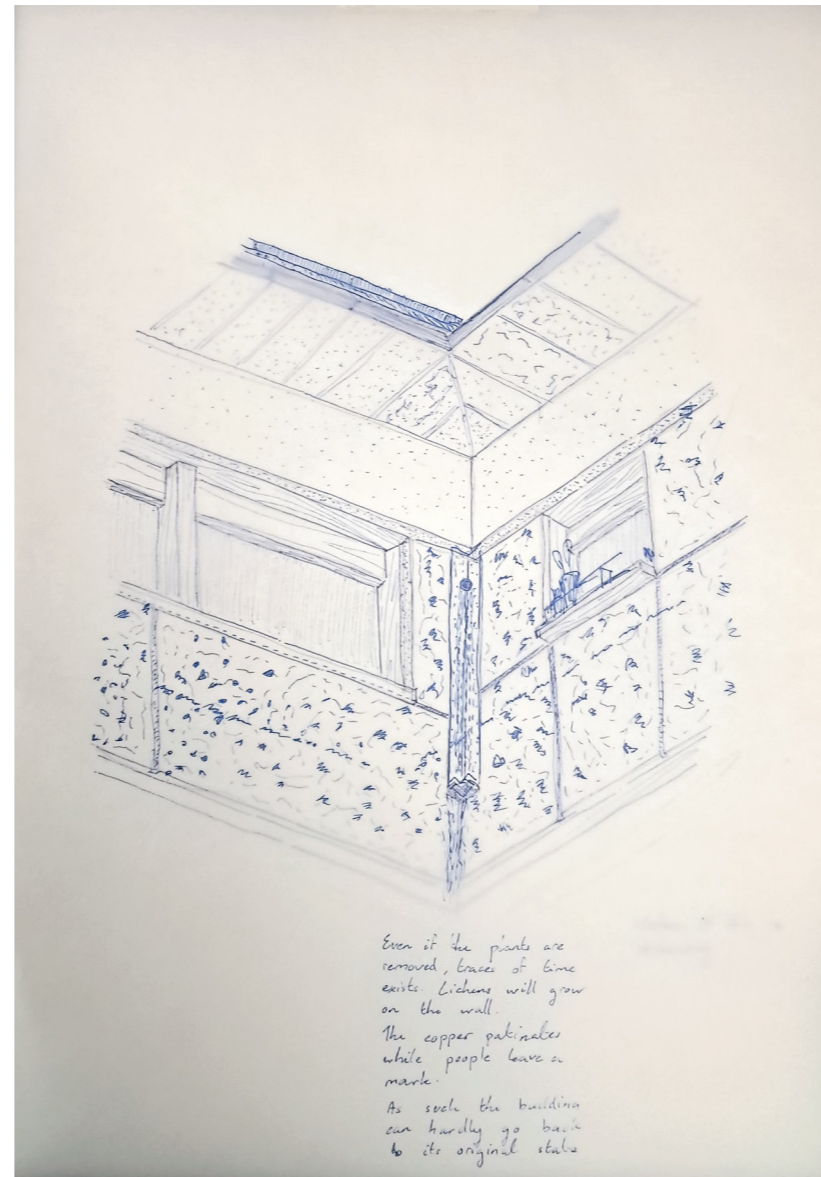
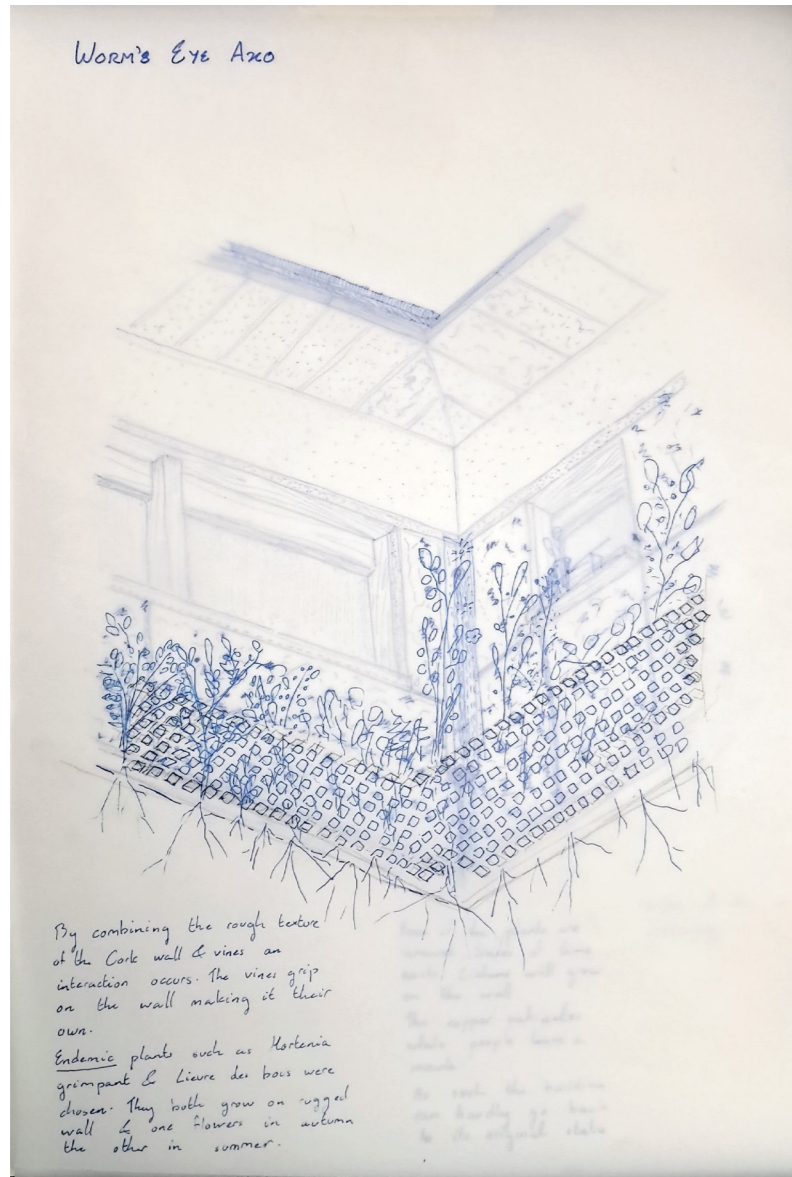




Material  
Palette



Worm's Eye Axo



Unless it's a drawing.

