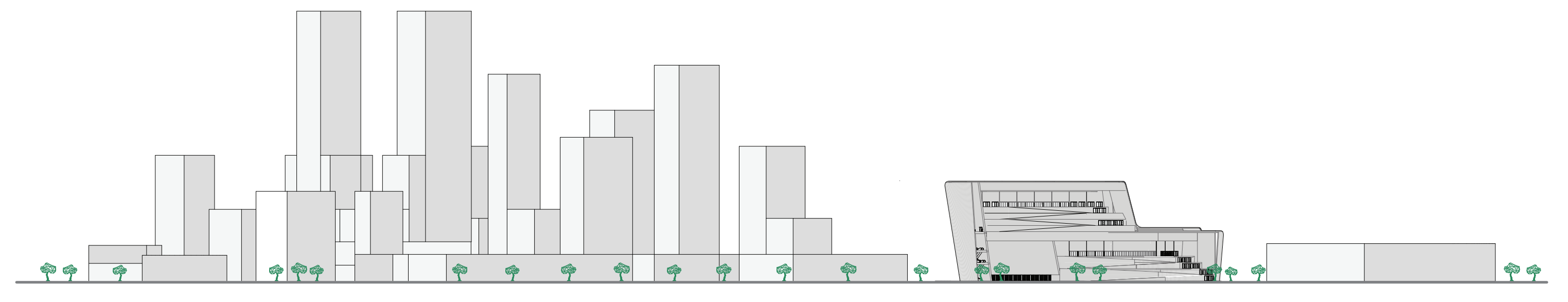
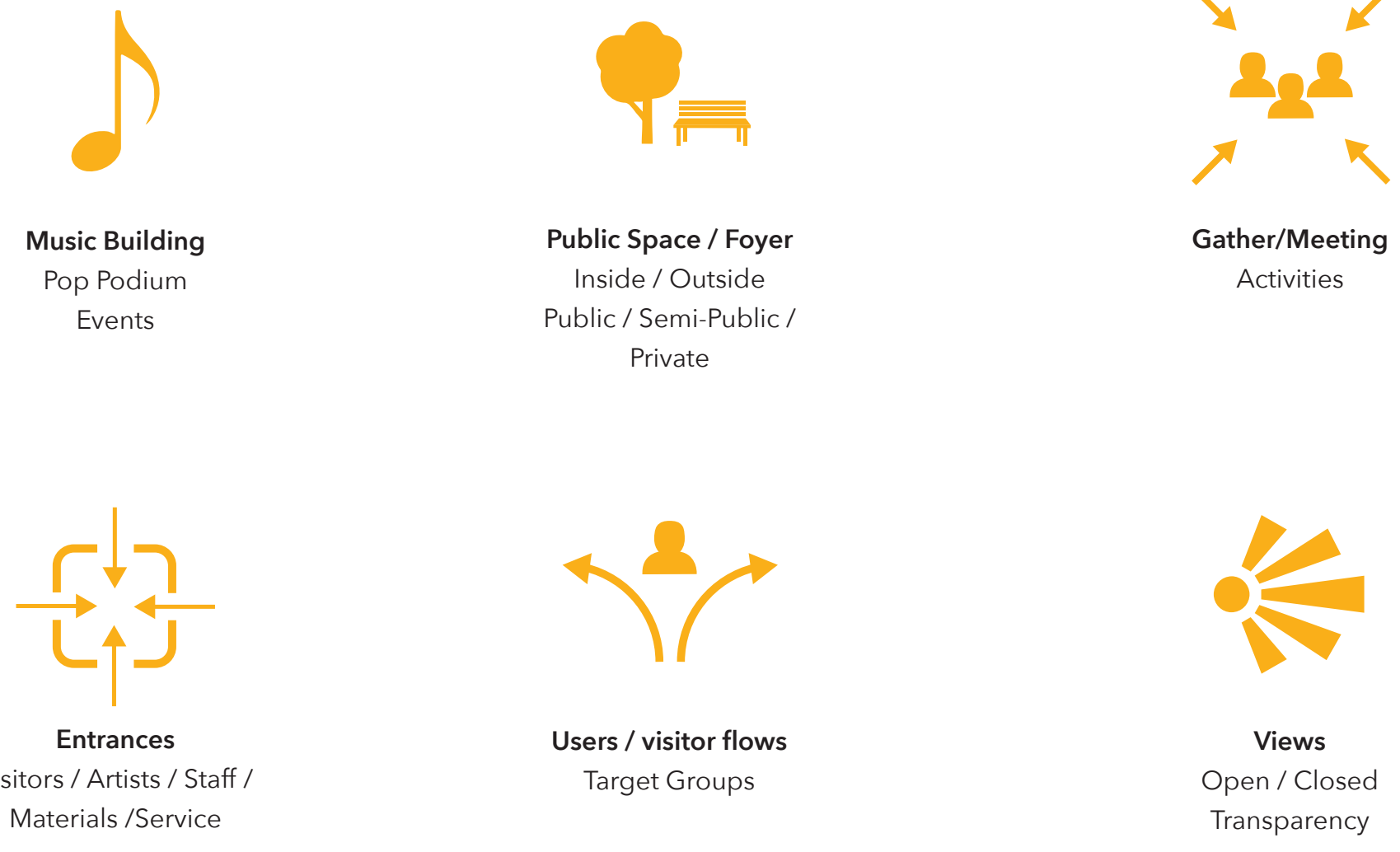


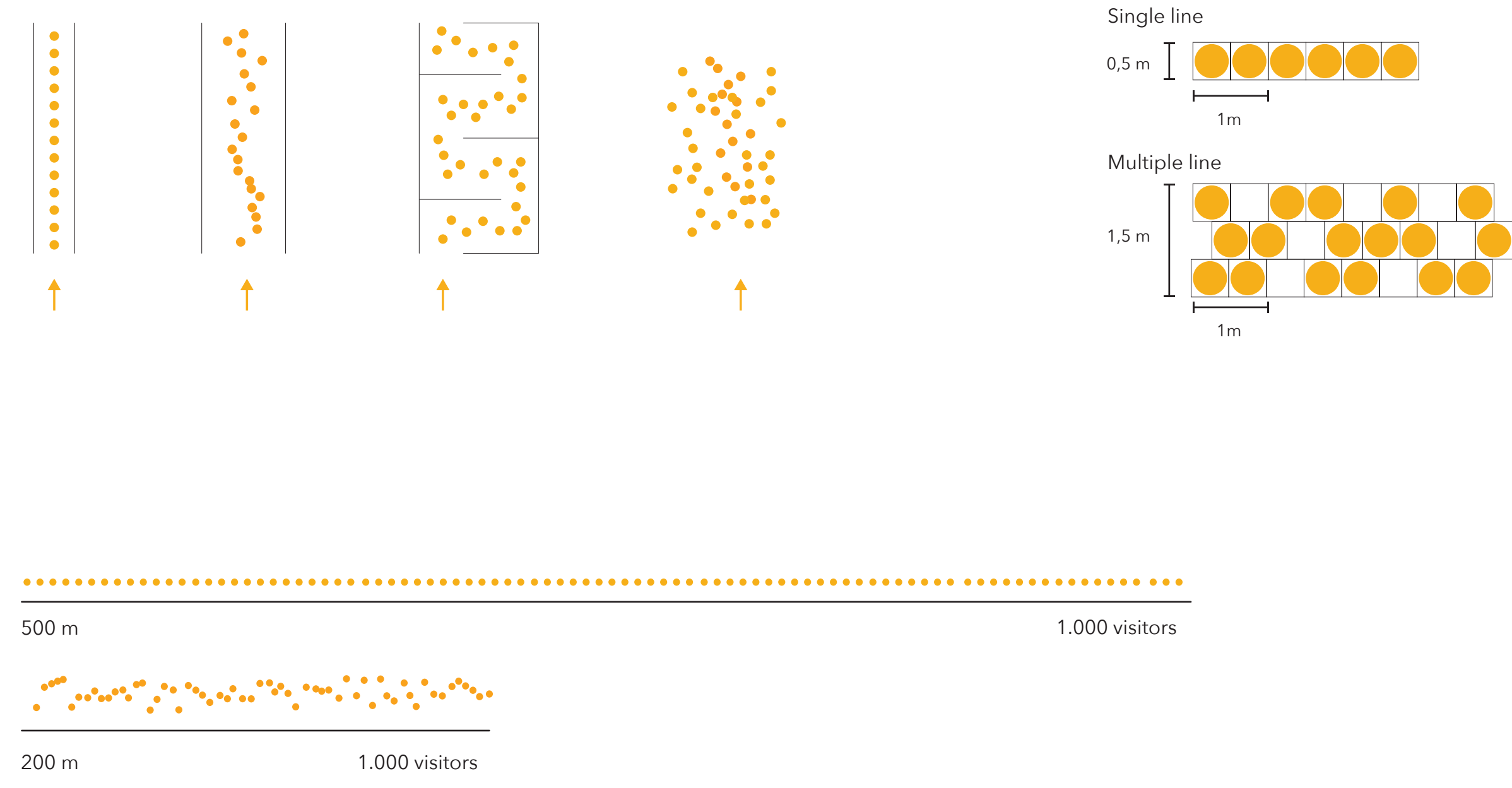
# Access to the Music Building

## Context



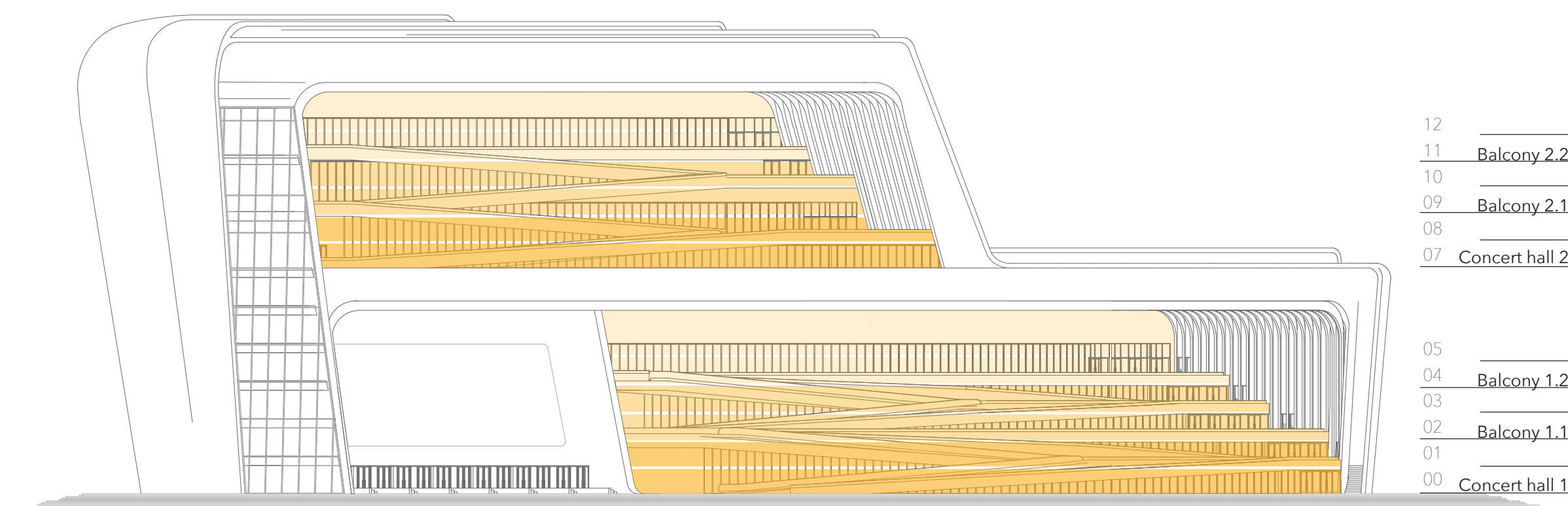
Profile, showing direct surroundings

## The waiting line



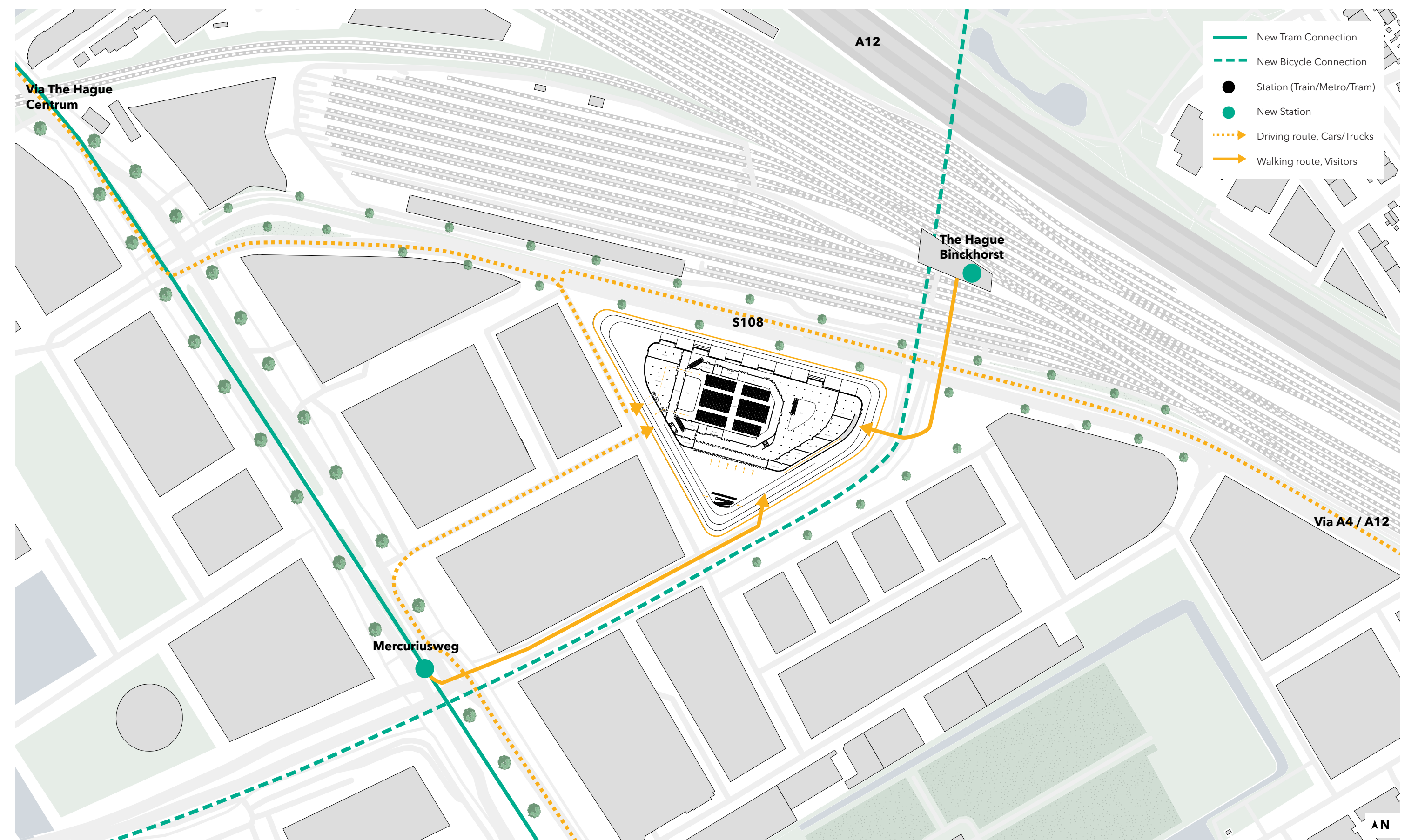
Music building North facade

## Program

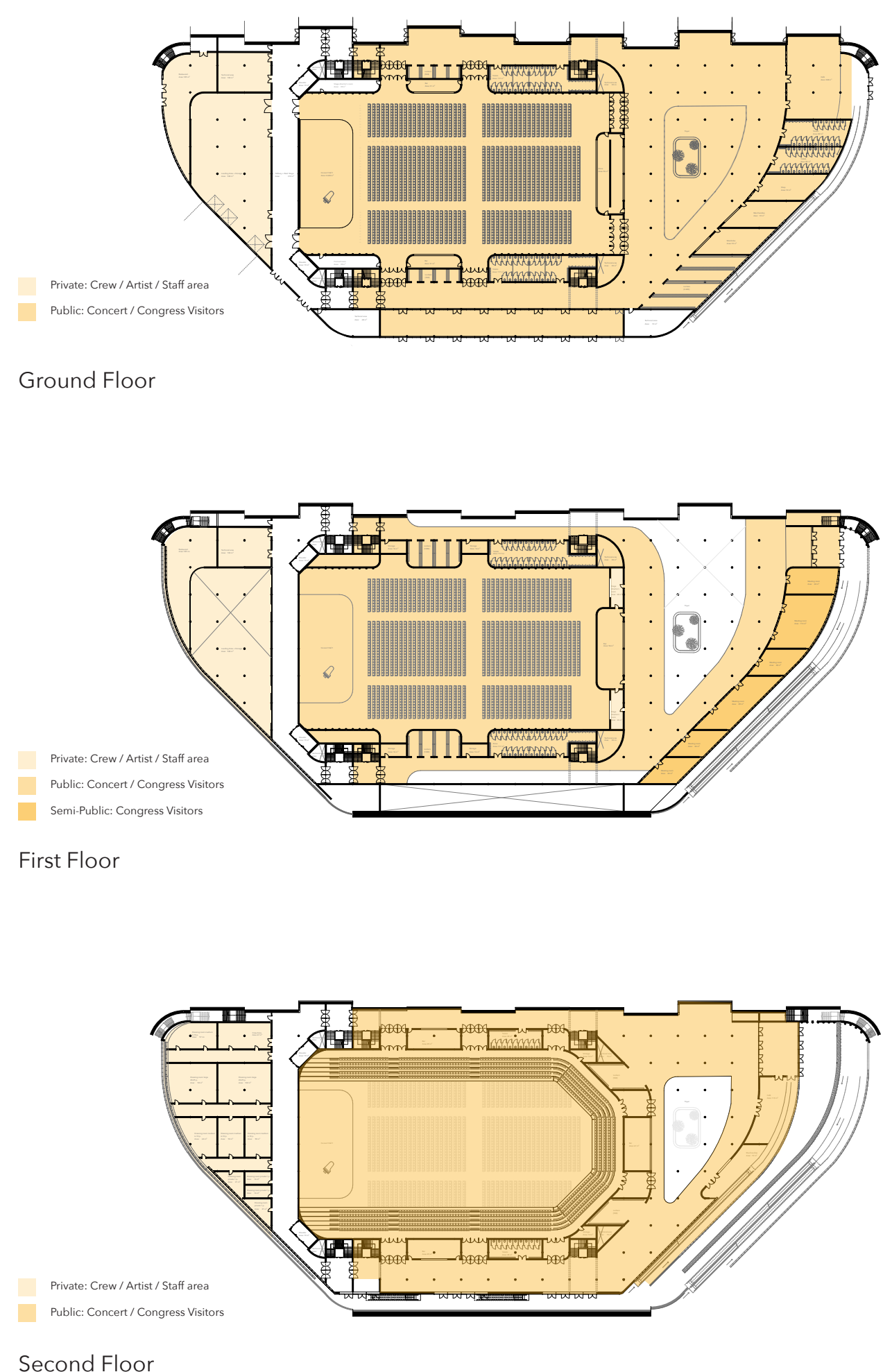


- 12
- 11 Balcony 2.2
- 10
- 09 Balcony 2.1
- 08
- 07 Concert hall 2
- 06
- 05 Balcony 1.2
- 04 Balcony 1.1
- 03
- 02
- 01
- 00 Concert hall 1

- Facilities Balcony 2 (cloakroom/lockers, toilets, bars, etc.)
- Facilities Balcony 1 (cloakroom/lockers, toilets, bars, etc.)
- Facilities Concert hall (cloakroom/lockers, toilets, bars, etc.)



Access to the plot / music building - Site plan + ground floor music building [1:2.500]

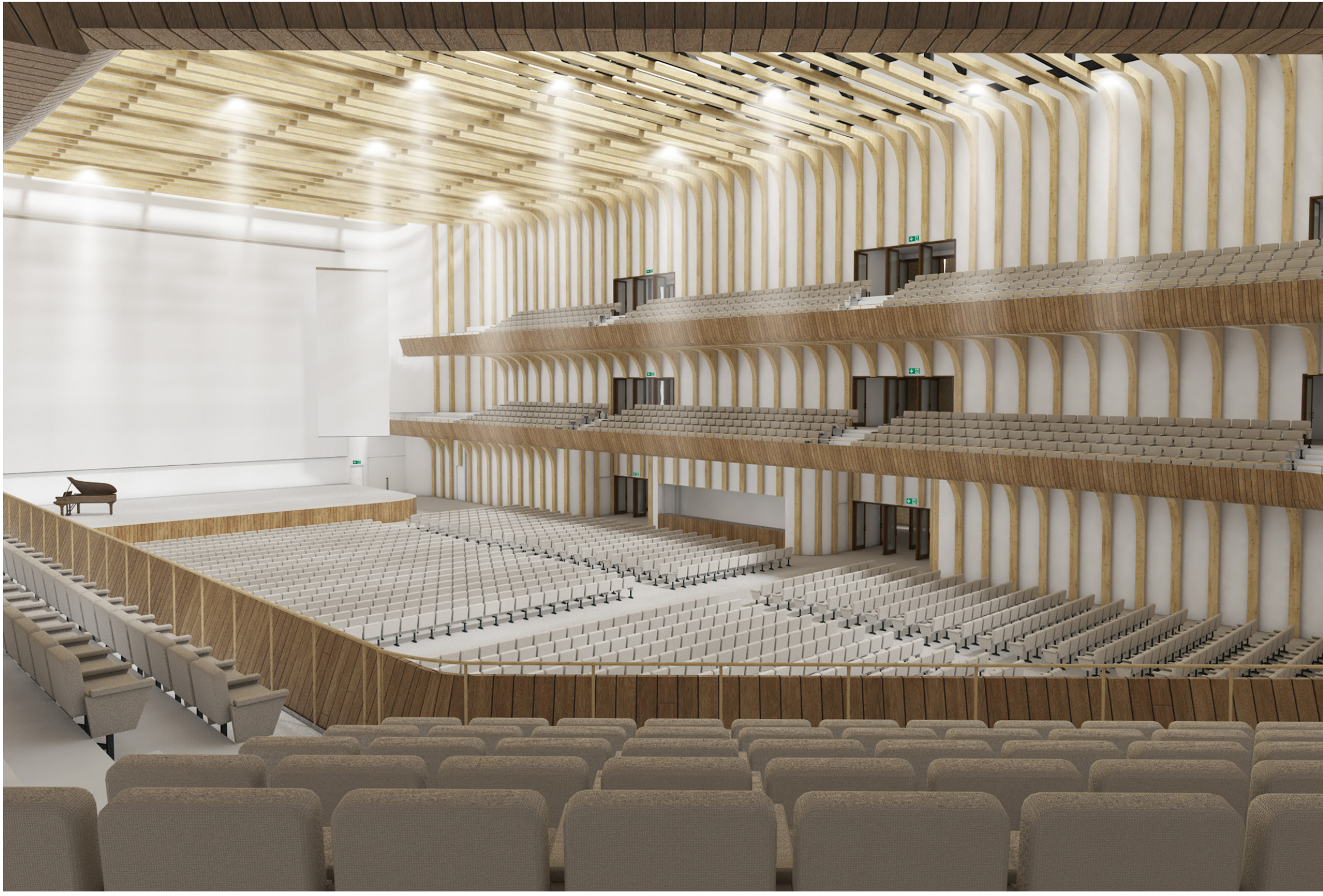


Music building East facade



# Access to the Music Building

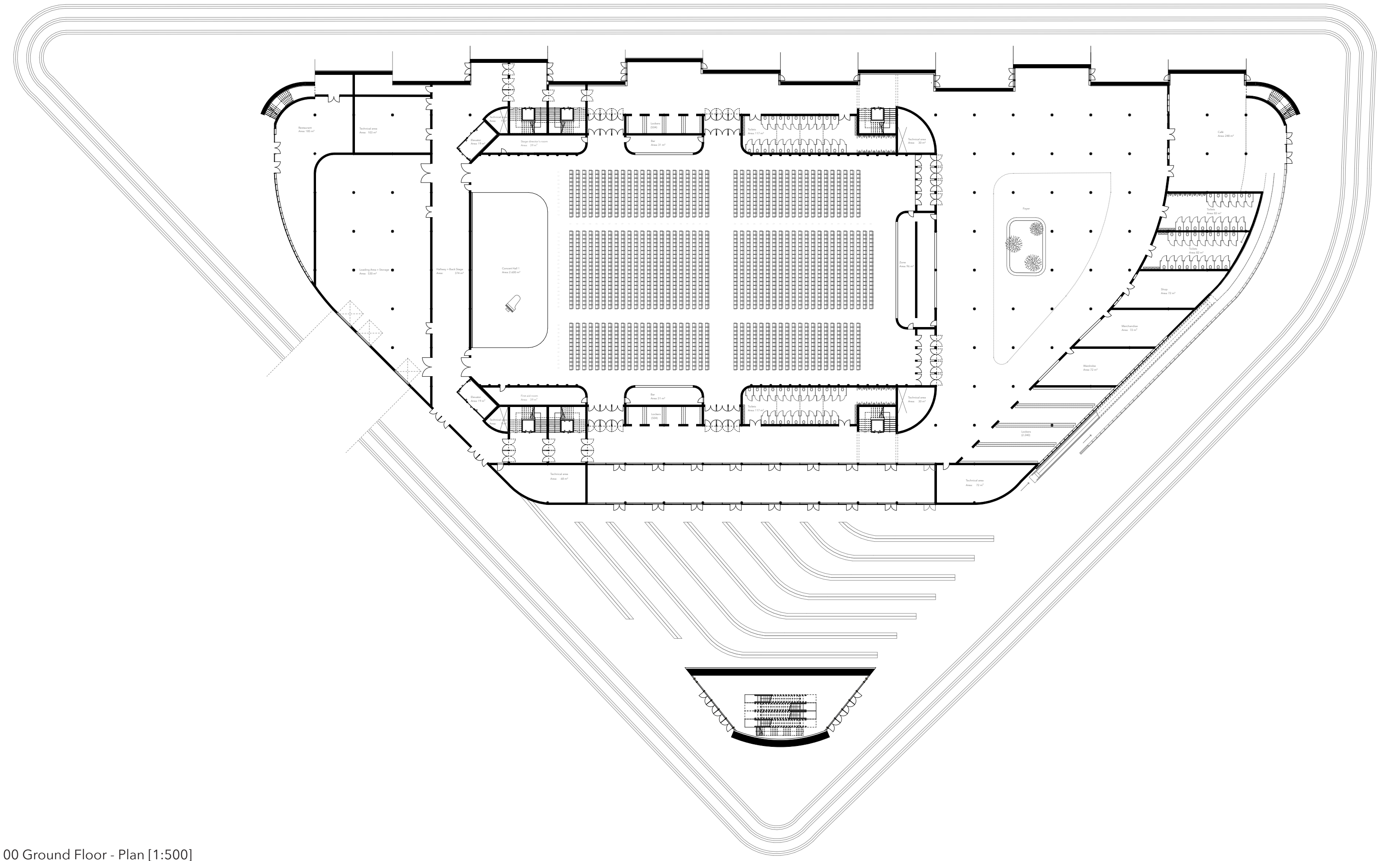
Interior and Plans



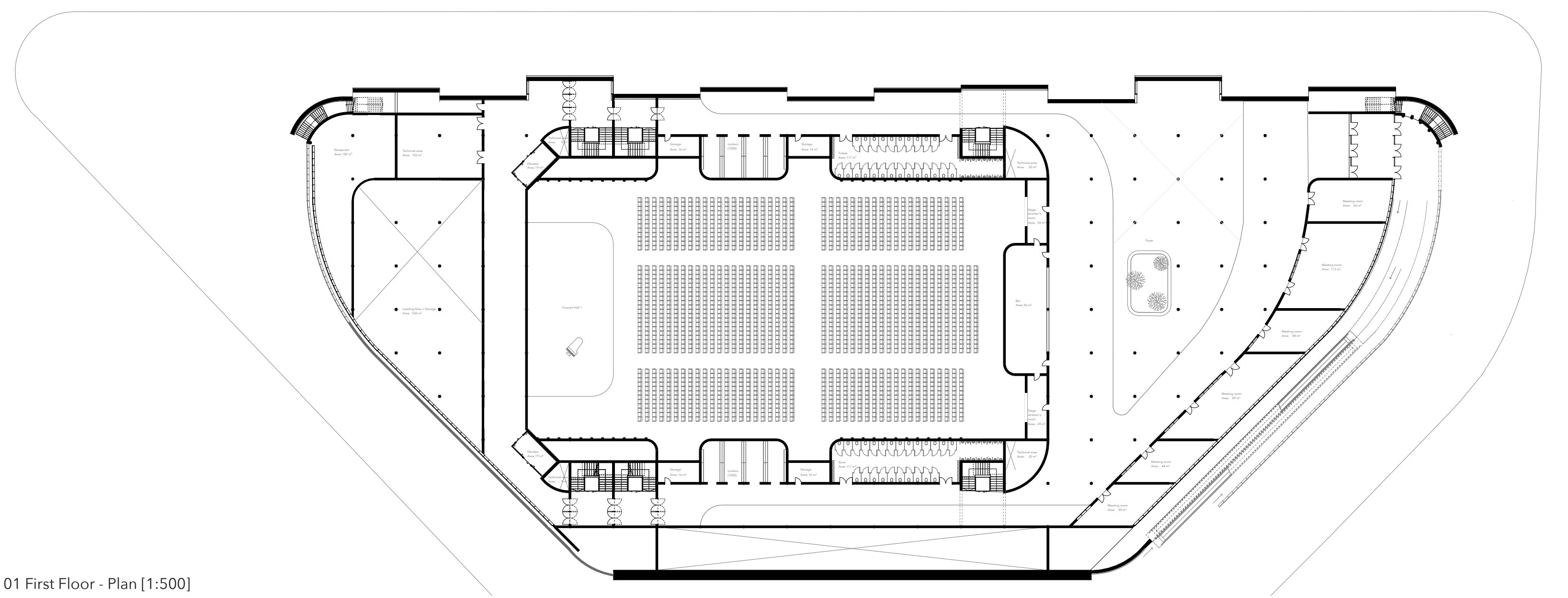
Interior Concert Hall 1



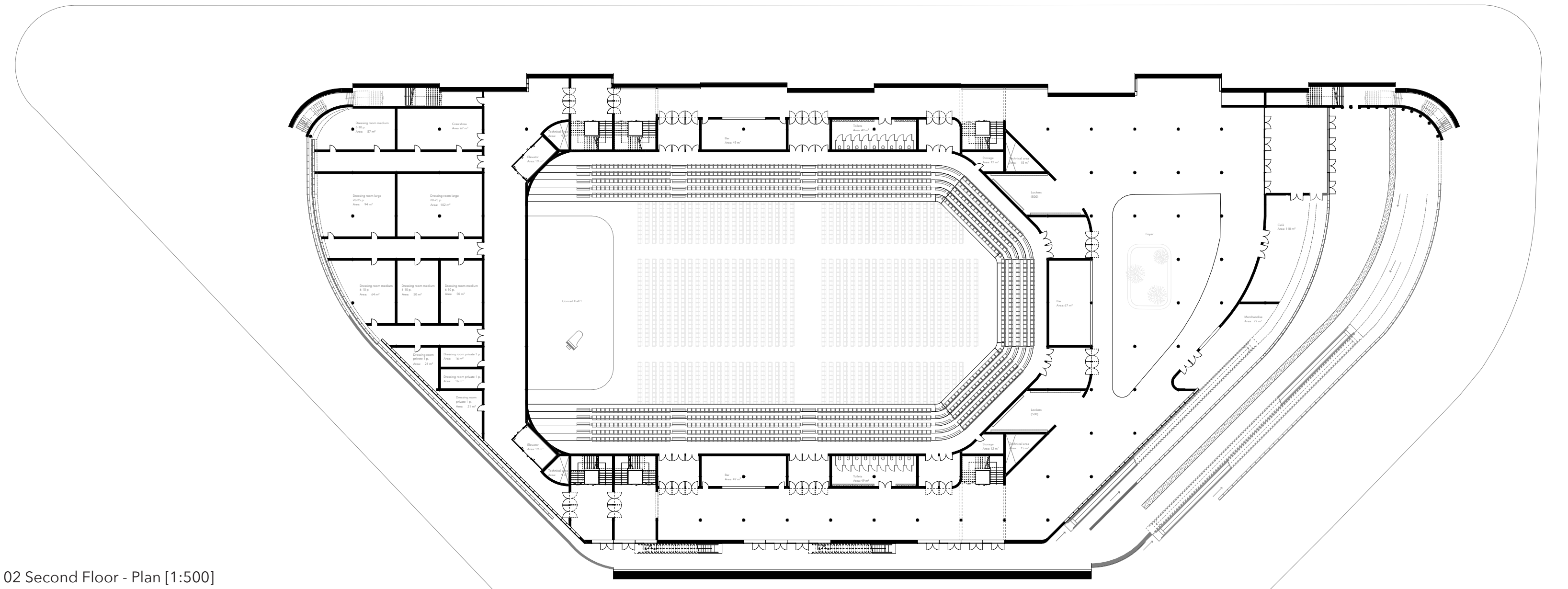
Foyer



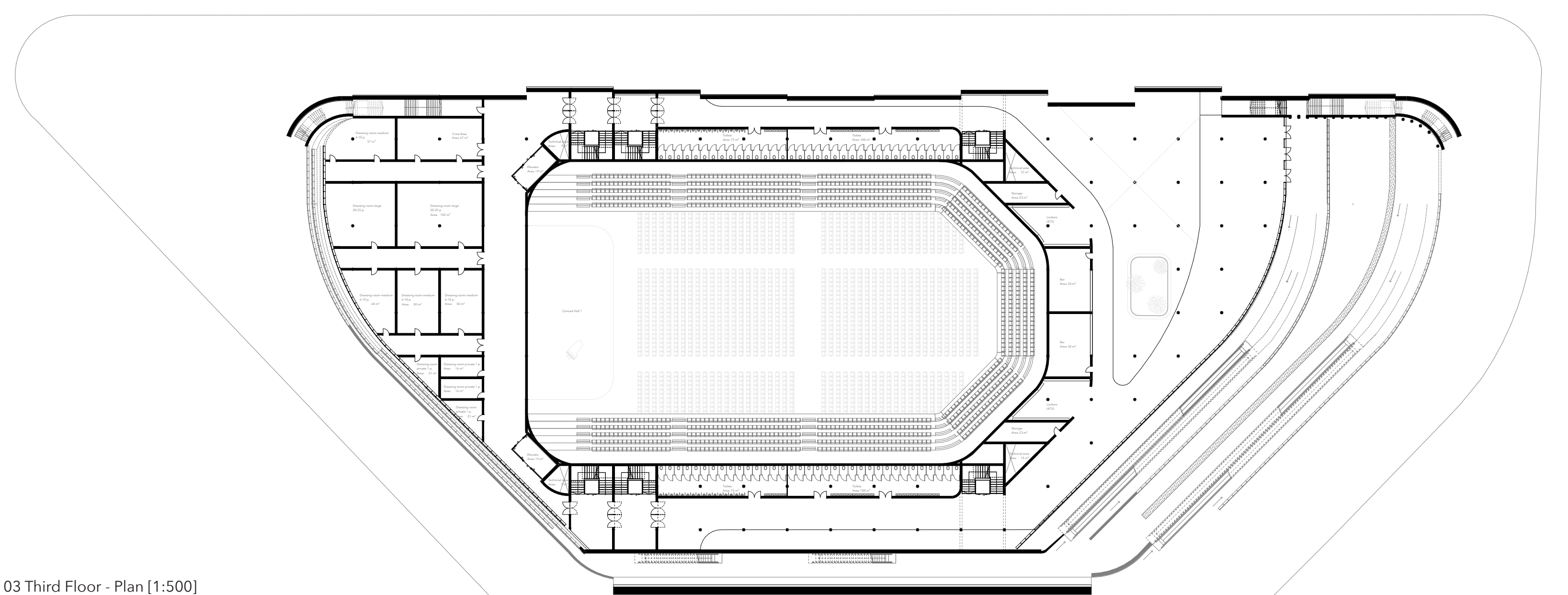
00 Ground Floor - Plan [1:500]



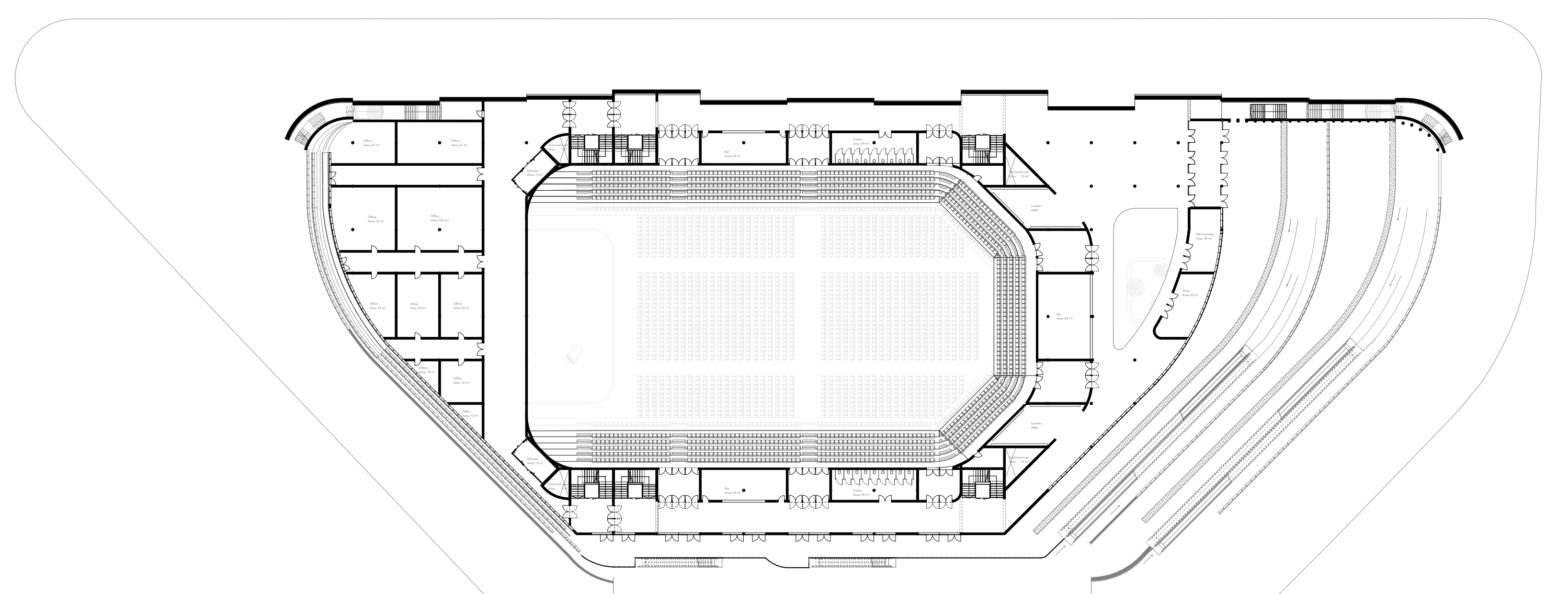
01 First Floor - Plan [1:500]



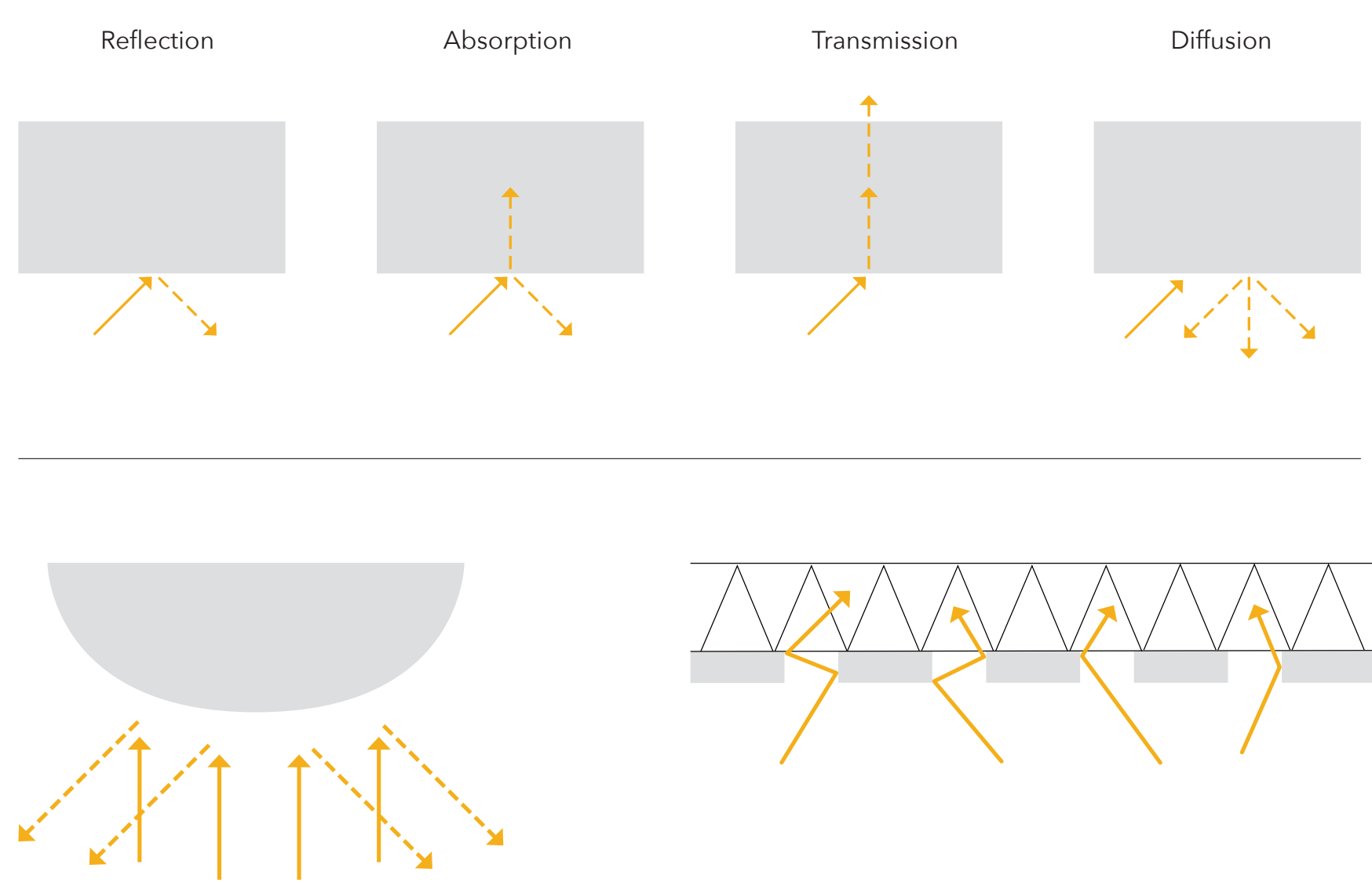
02 Second Floor - Plan [1:500]



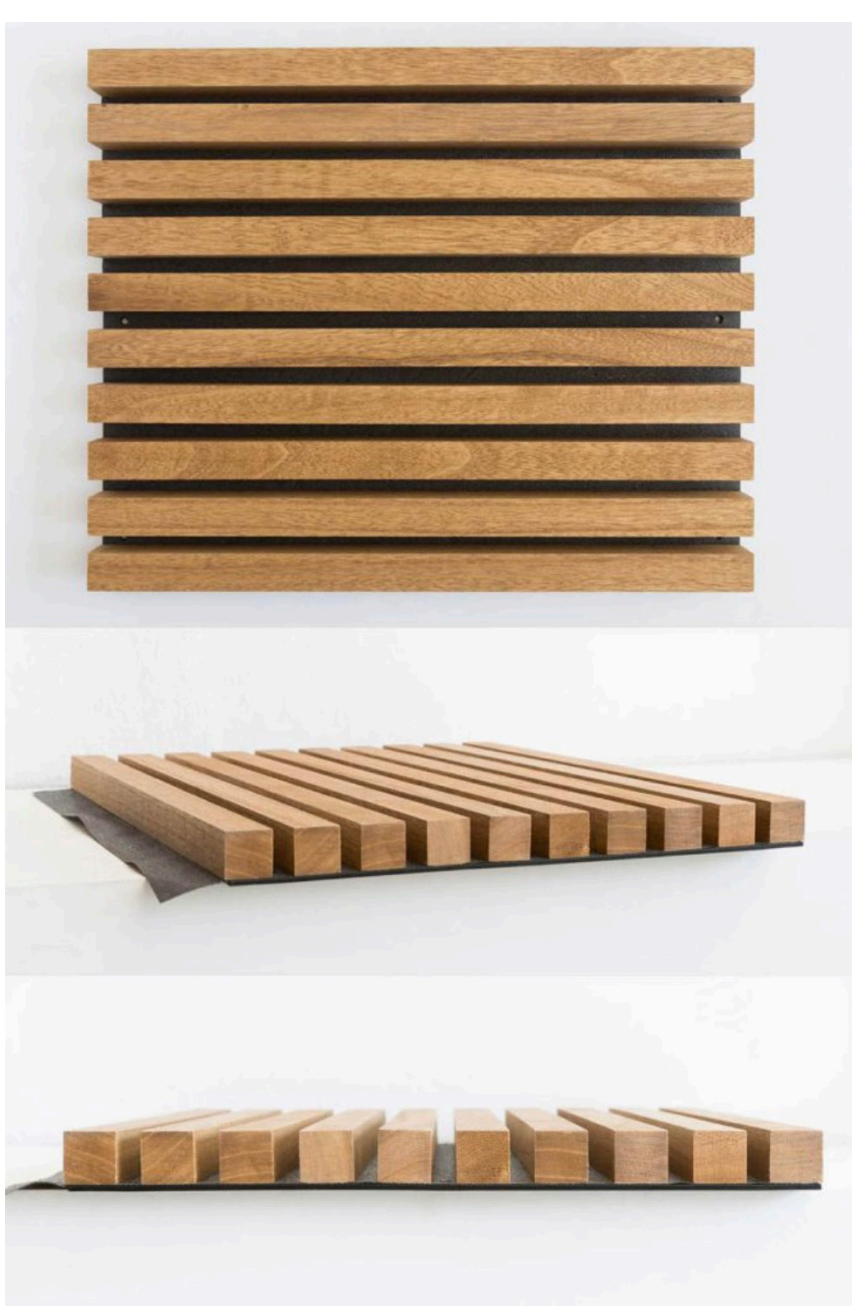
03 Third Floor - Plan [1:500]



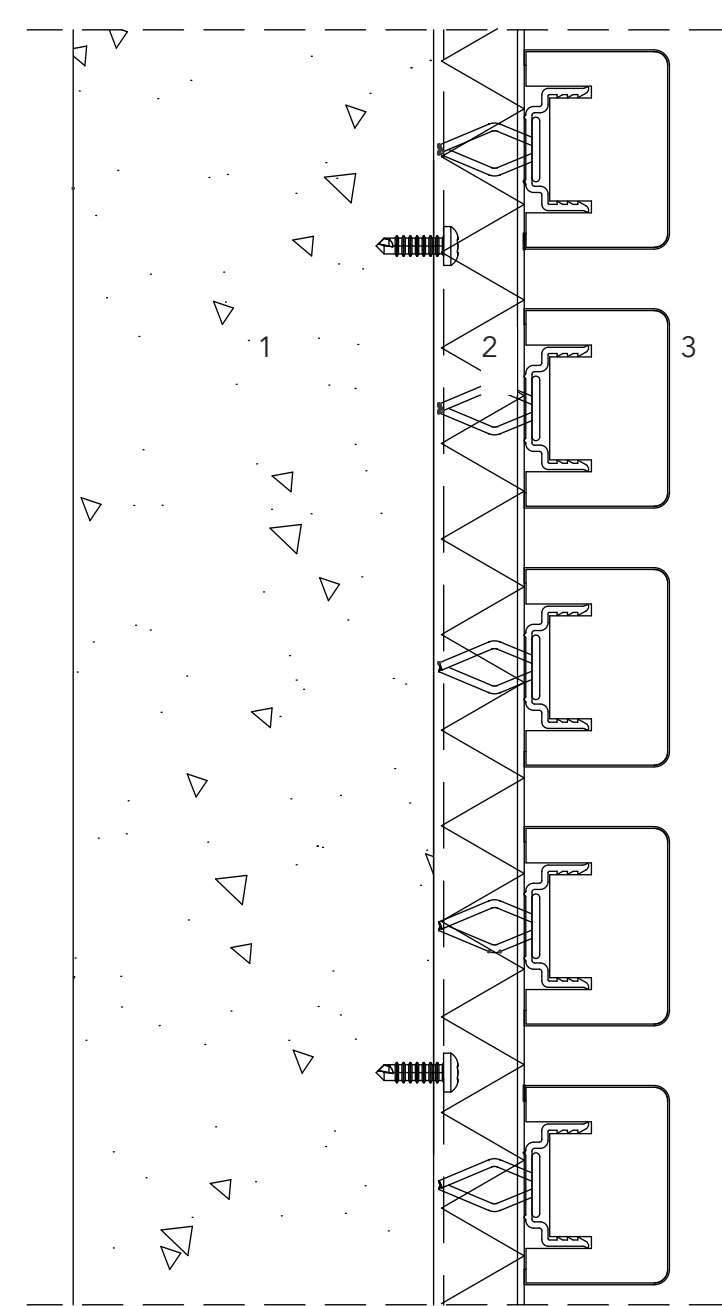
04 Fourth Floor - Plan [1:500]



Acoustics Diagram



Slatted timber panels

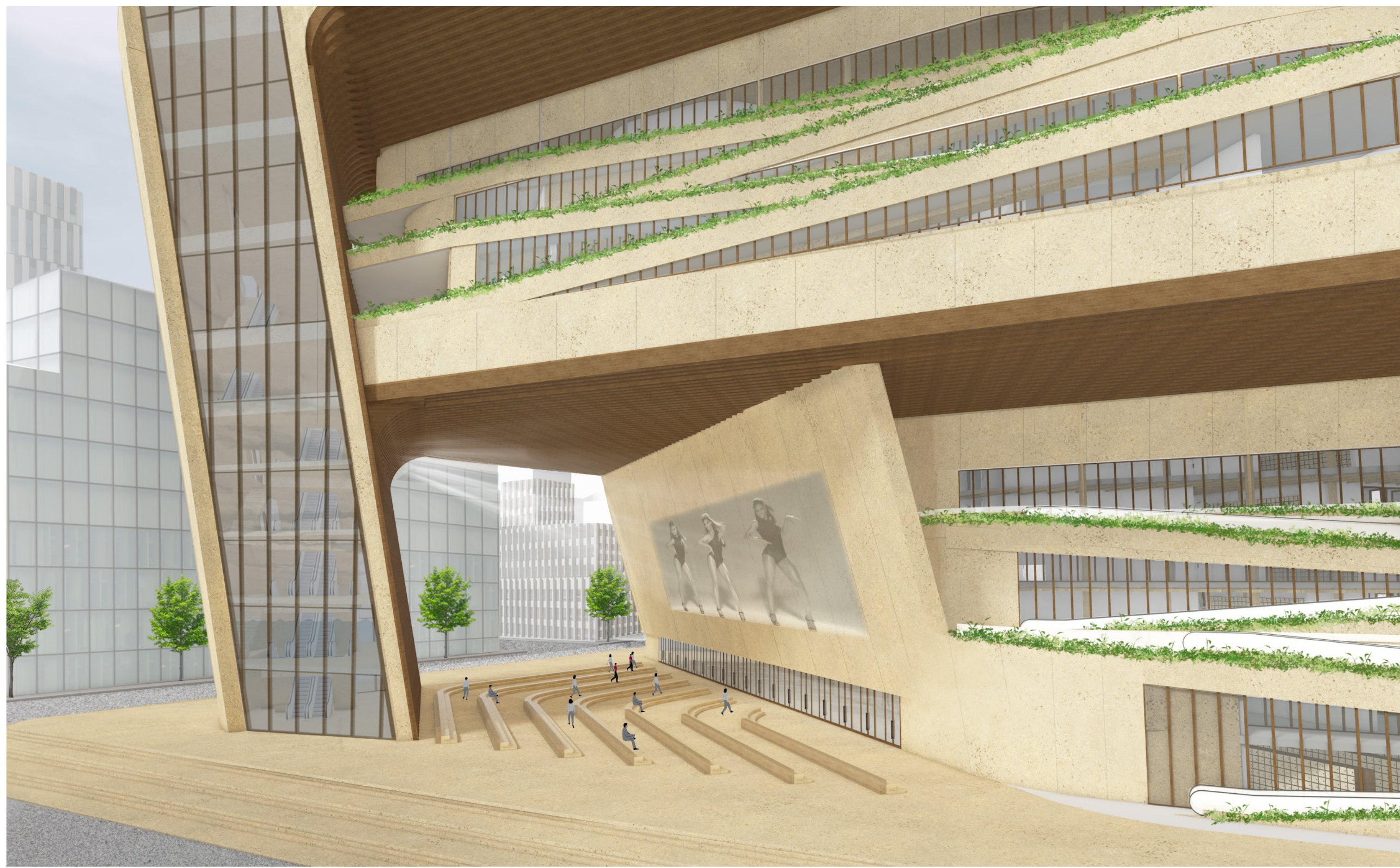
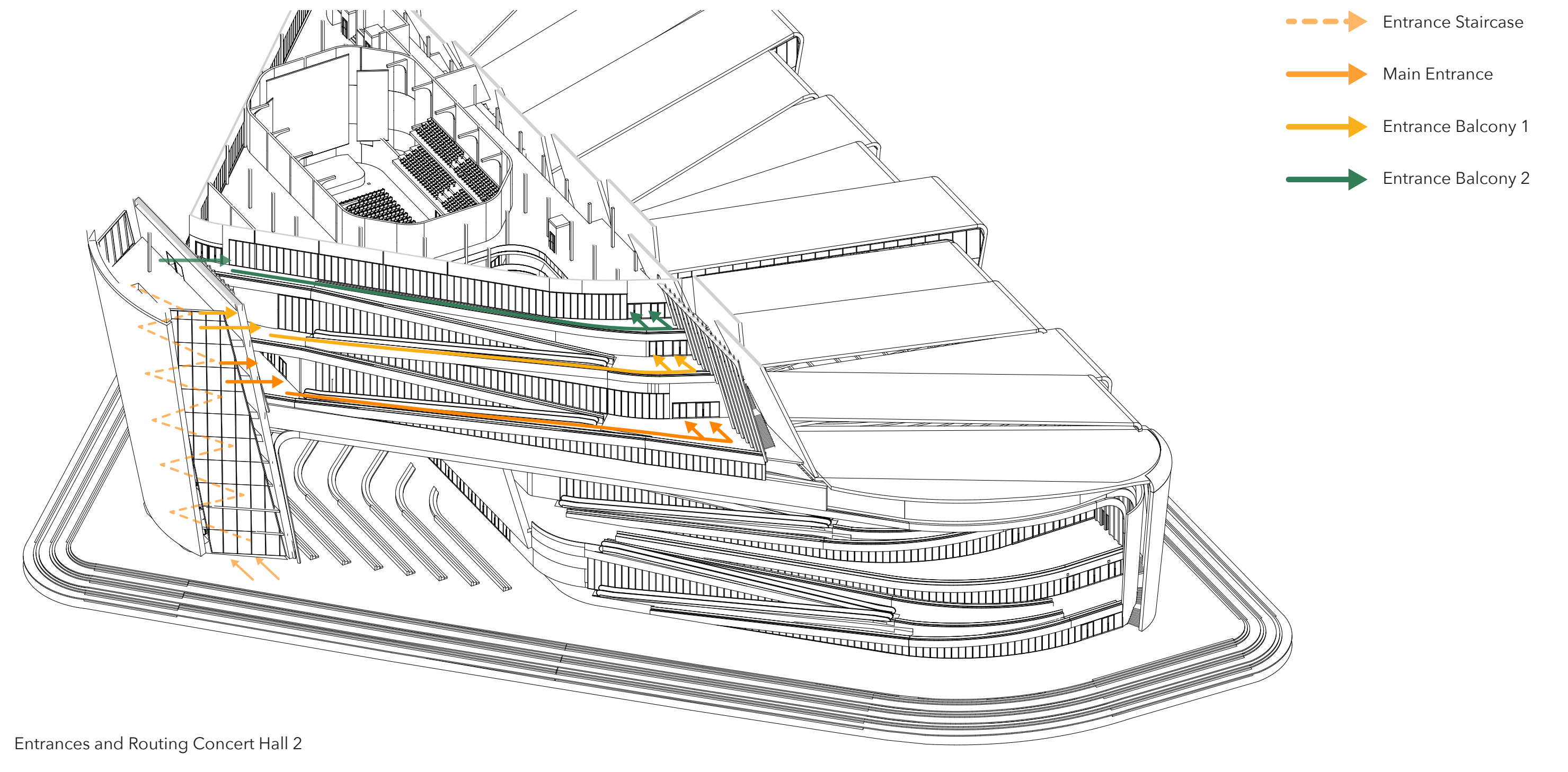
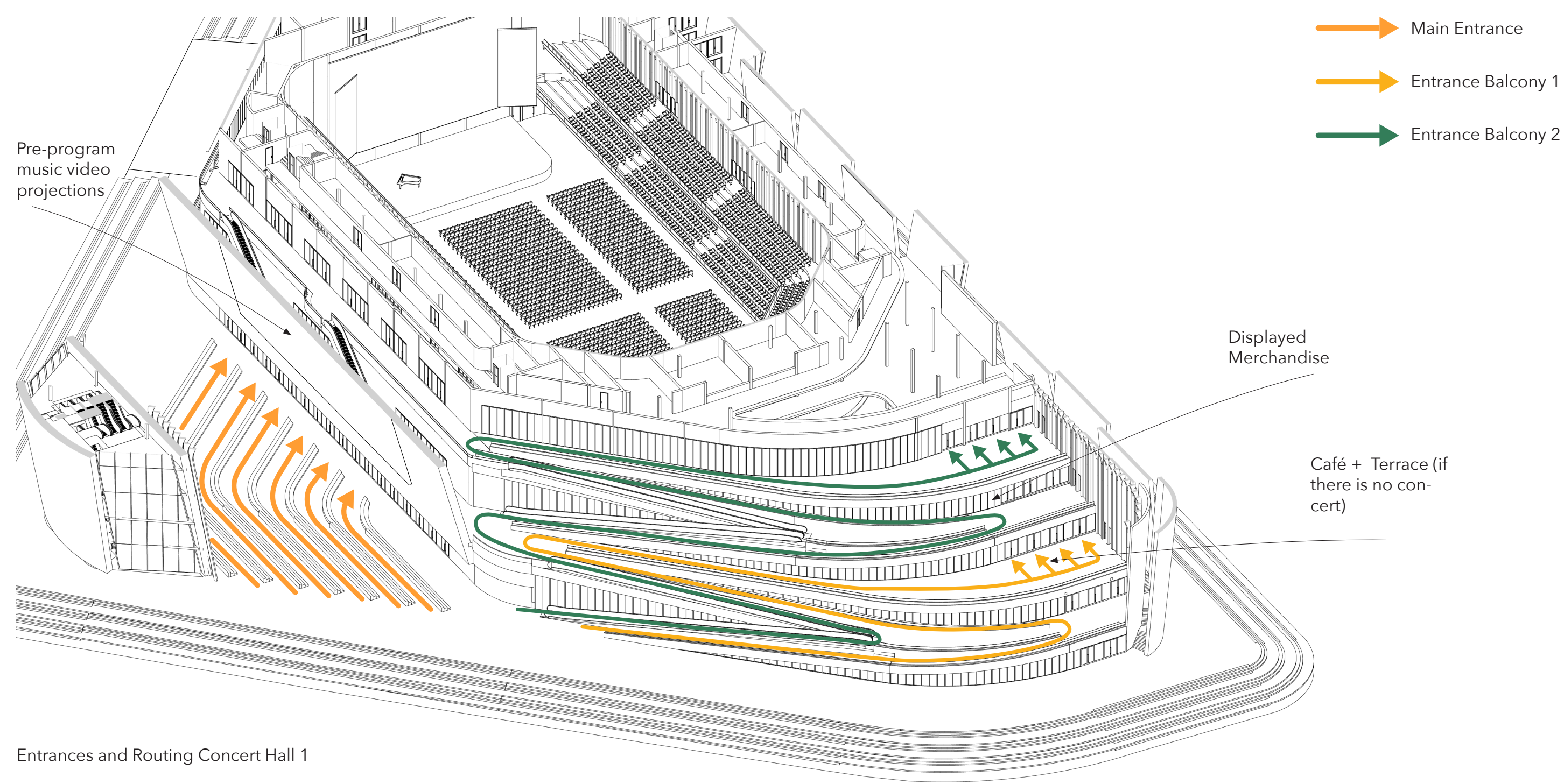


Detail -Acoustics timber panel  
 1. Concrete wall  
 2. Insulation  
 3. Acoustic panel / Wood

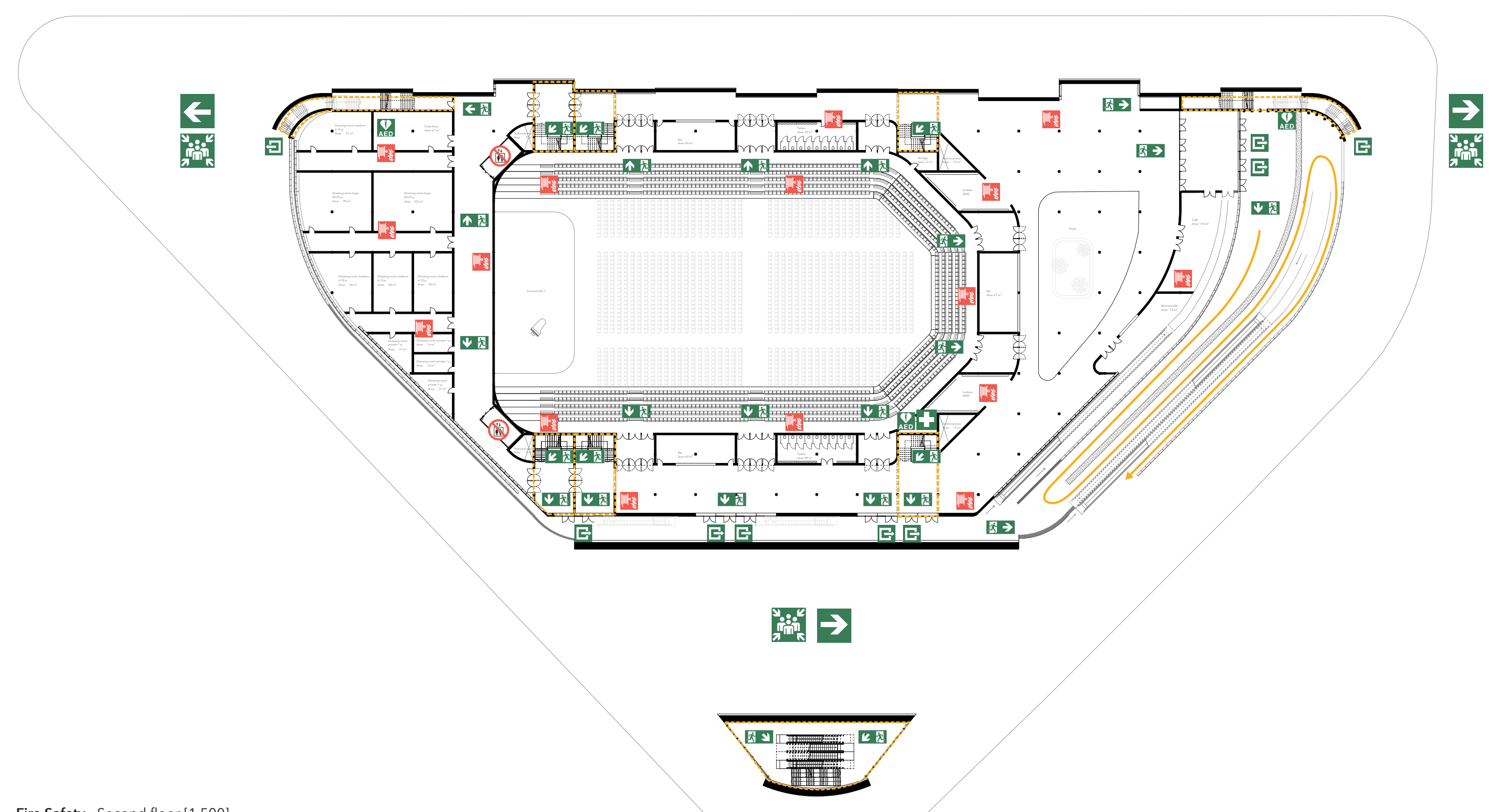
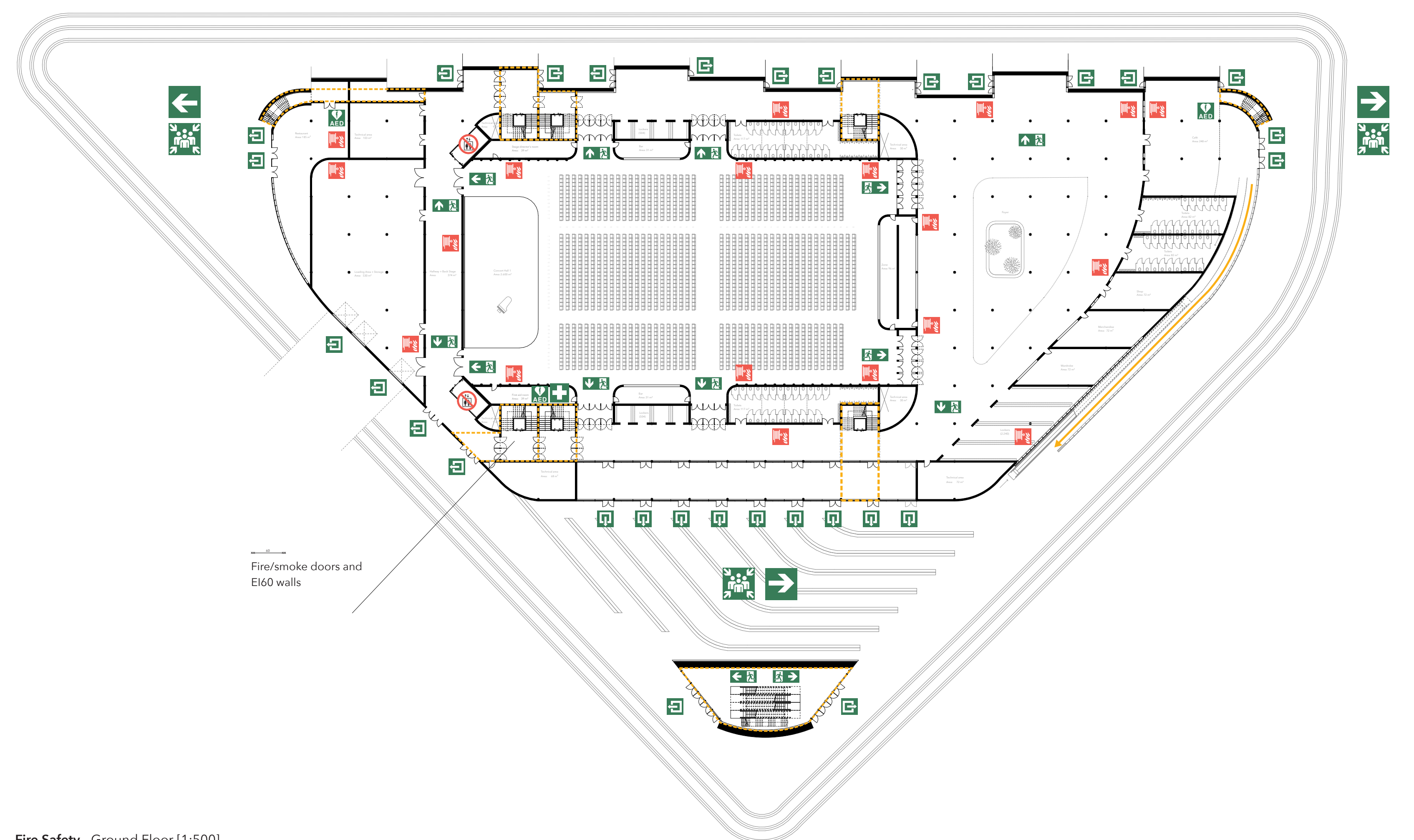
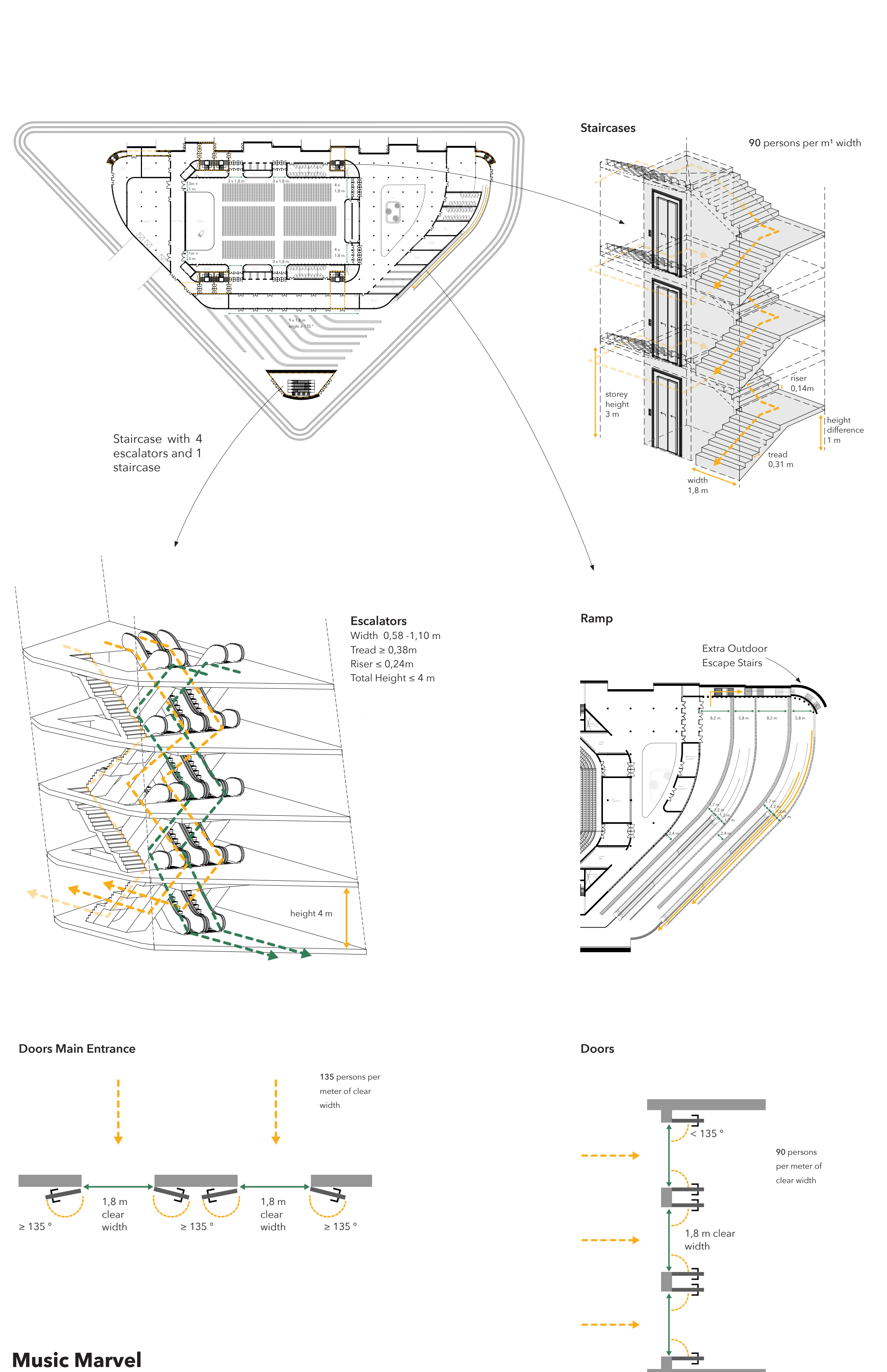


# Access to the Music Building

## Entrances and Exits



## Crowd Control / Fire Safety



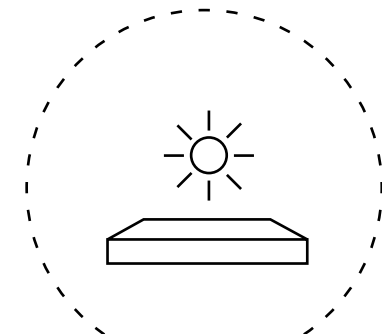
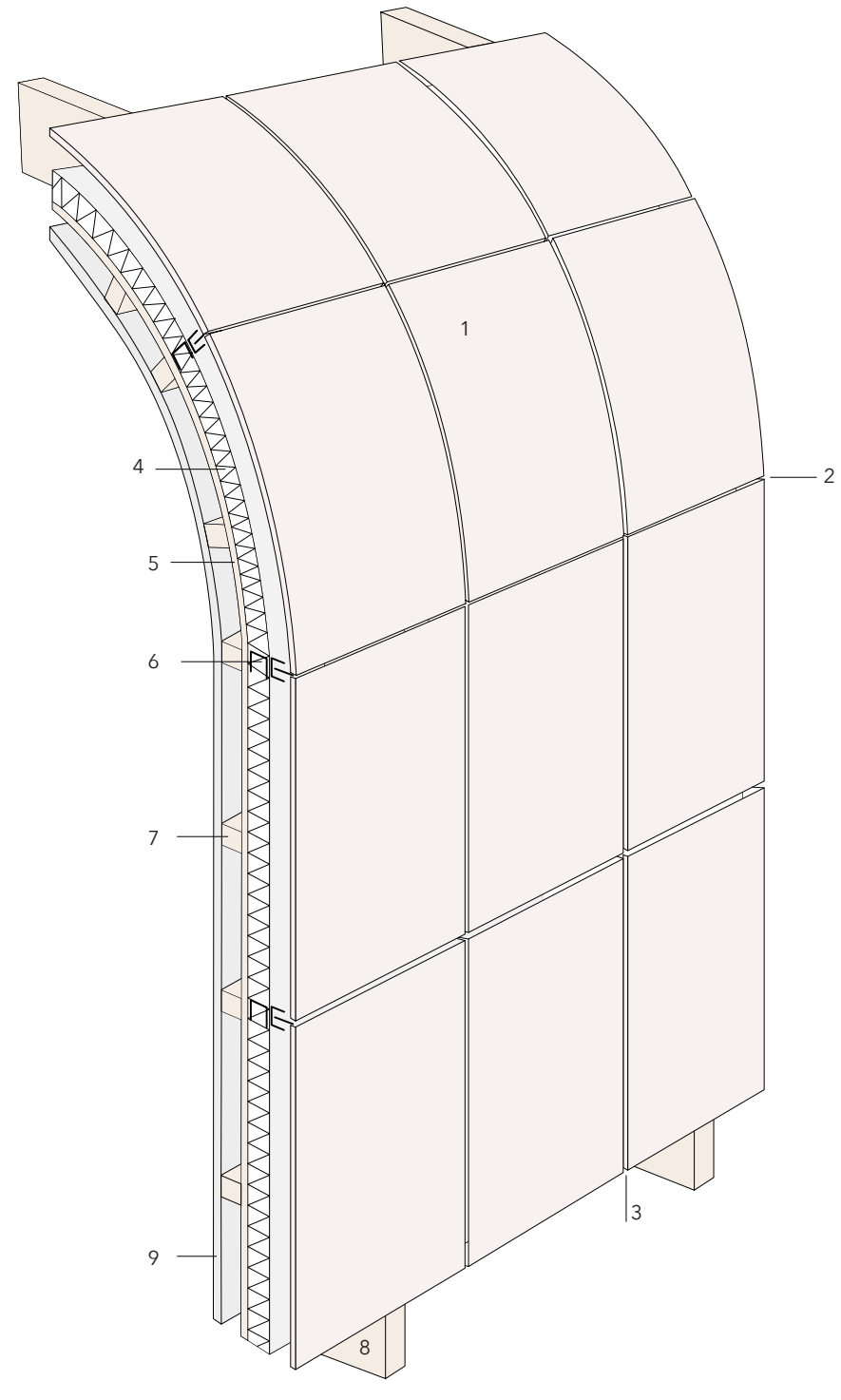


# Access to the Music Building

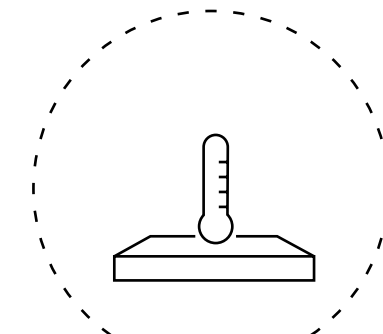
## Facade

### Limestone Facade Detail

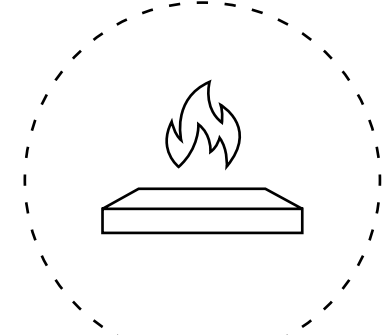
1. Limestone Panel (60mm)
2. Hairline joint between panels
3. Open joint between panels
4. Insulation
5. Plywood Boars fixed to timber joists to support insulation
6. Bracket and hanger
7. Timber joists
8. Timber beam
9. Inside wall



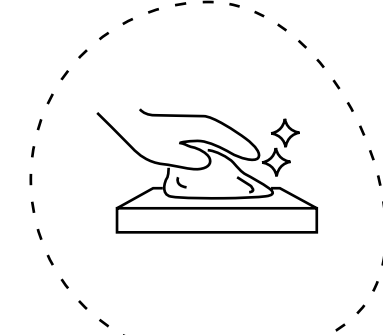
Inalterable colour that last over time



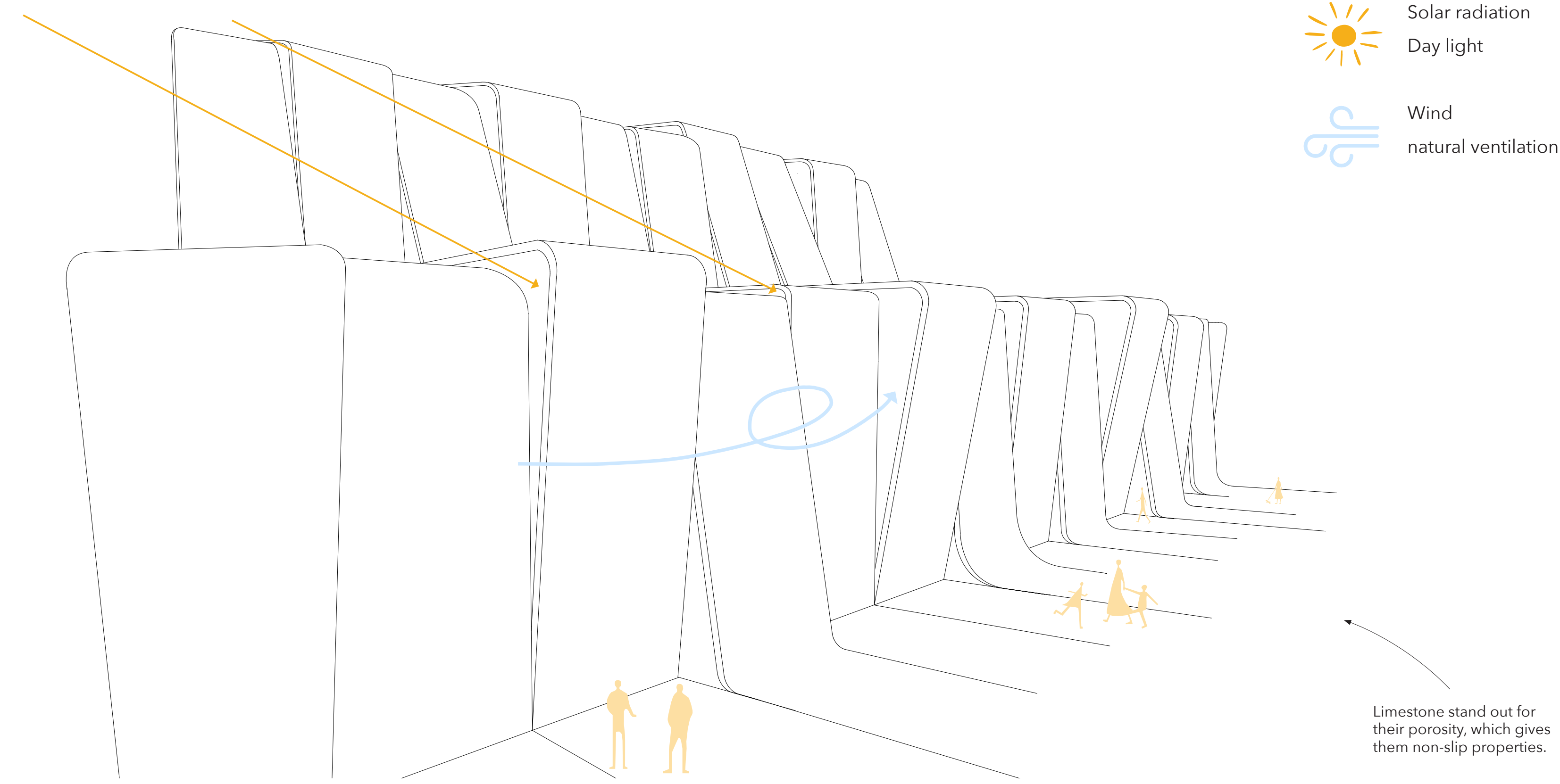
Low thermal conductivity



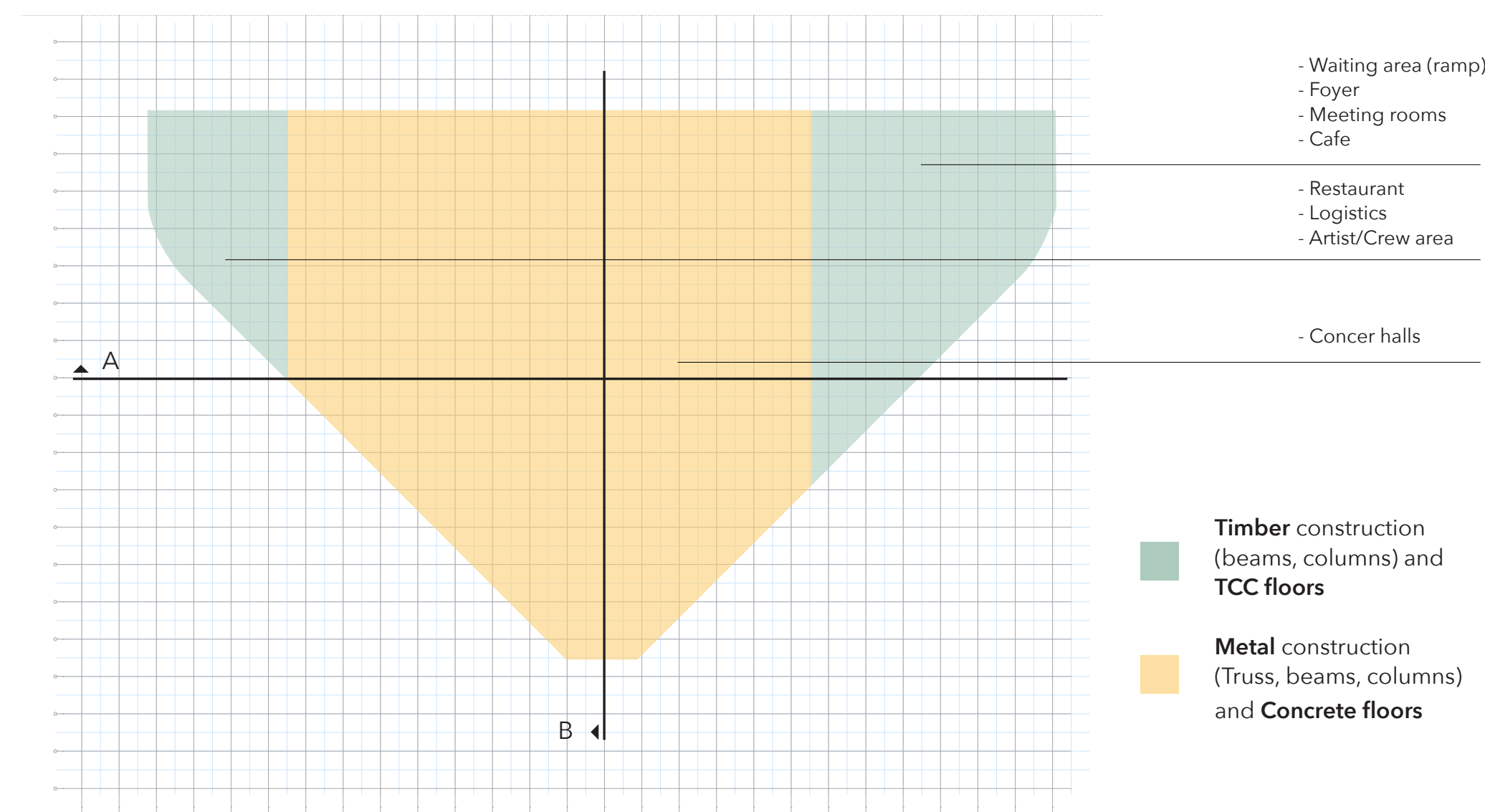
Resistant to fire and heat



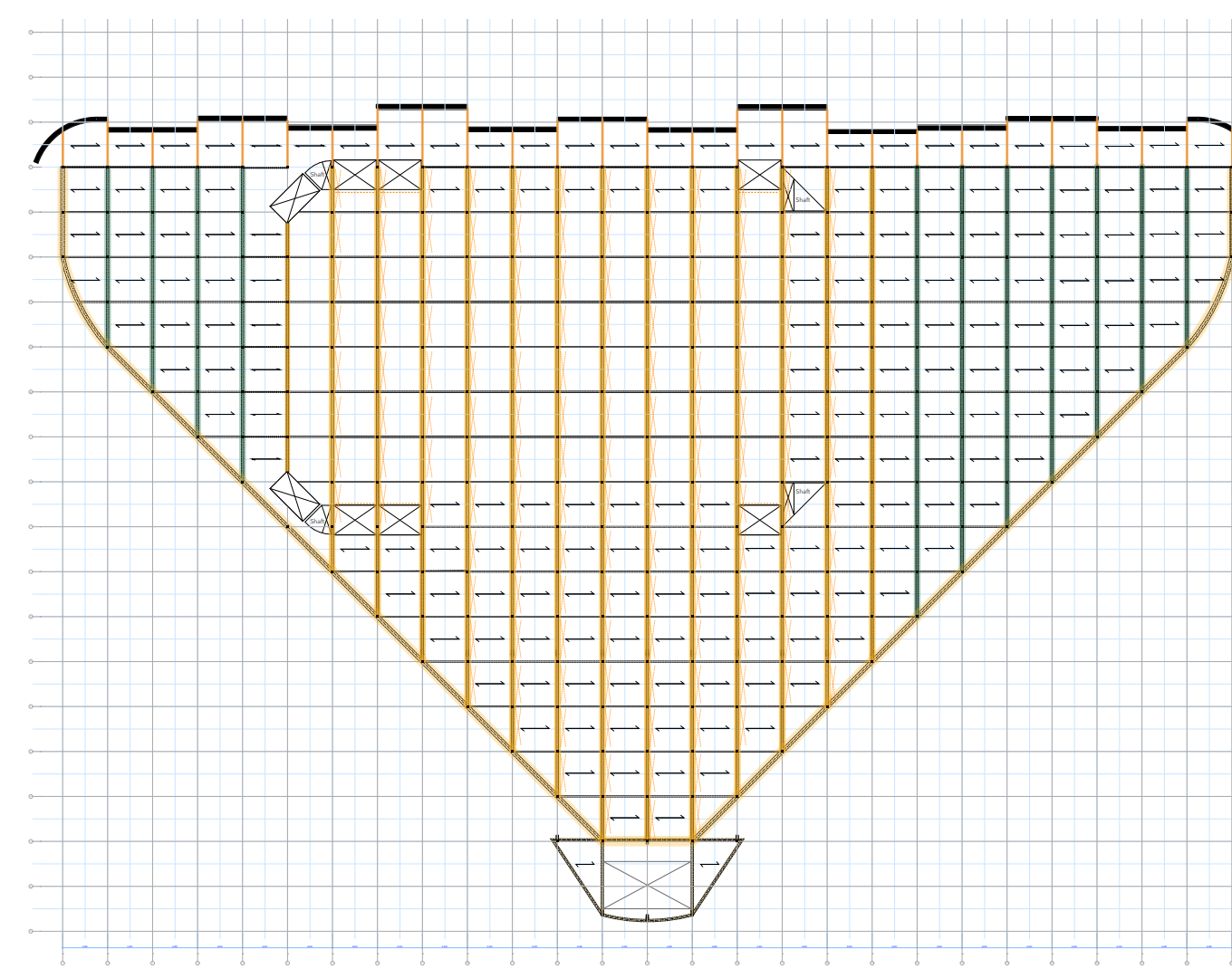
East care and maintenance



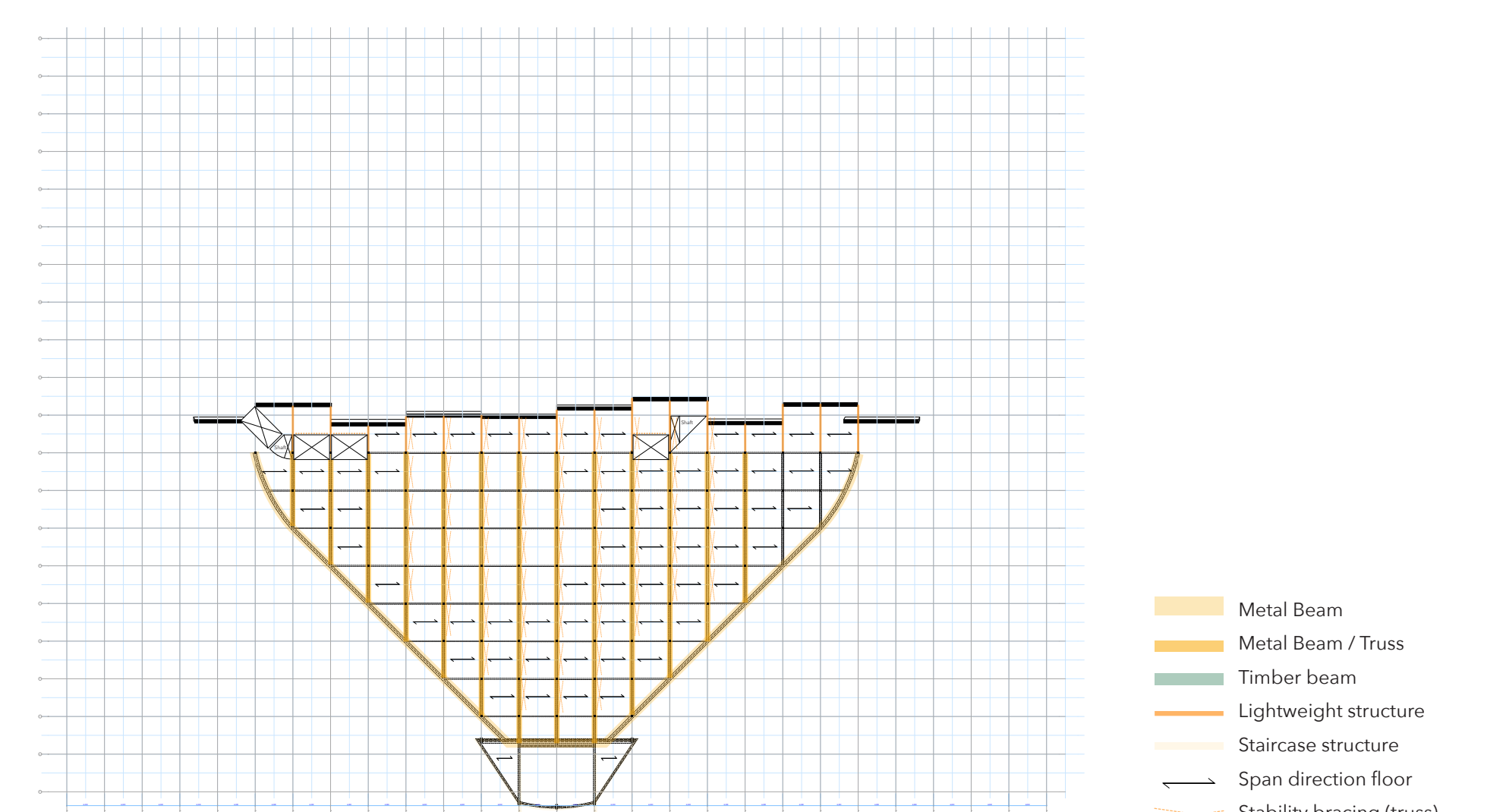
## Construction



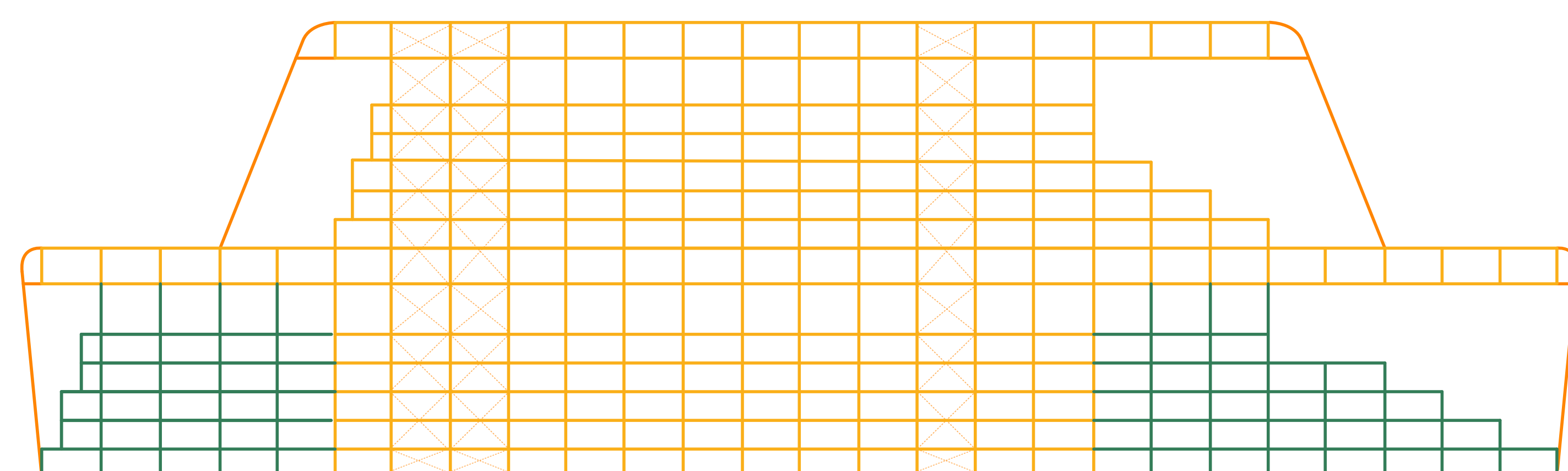
Construction materials division



Construction - Sixth floor

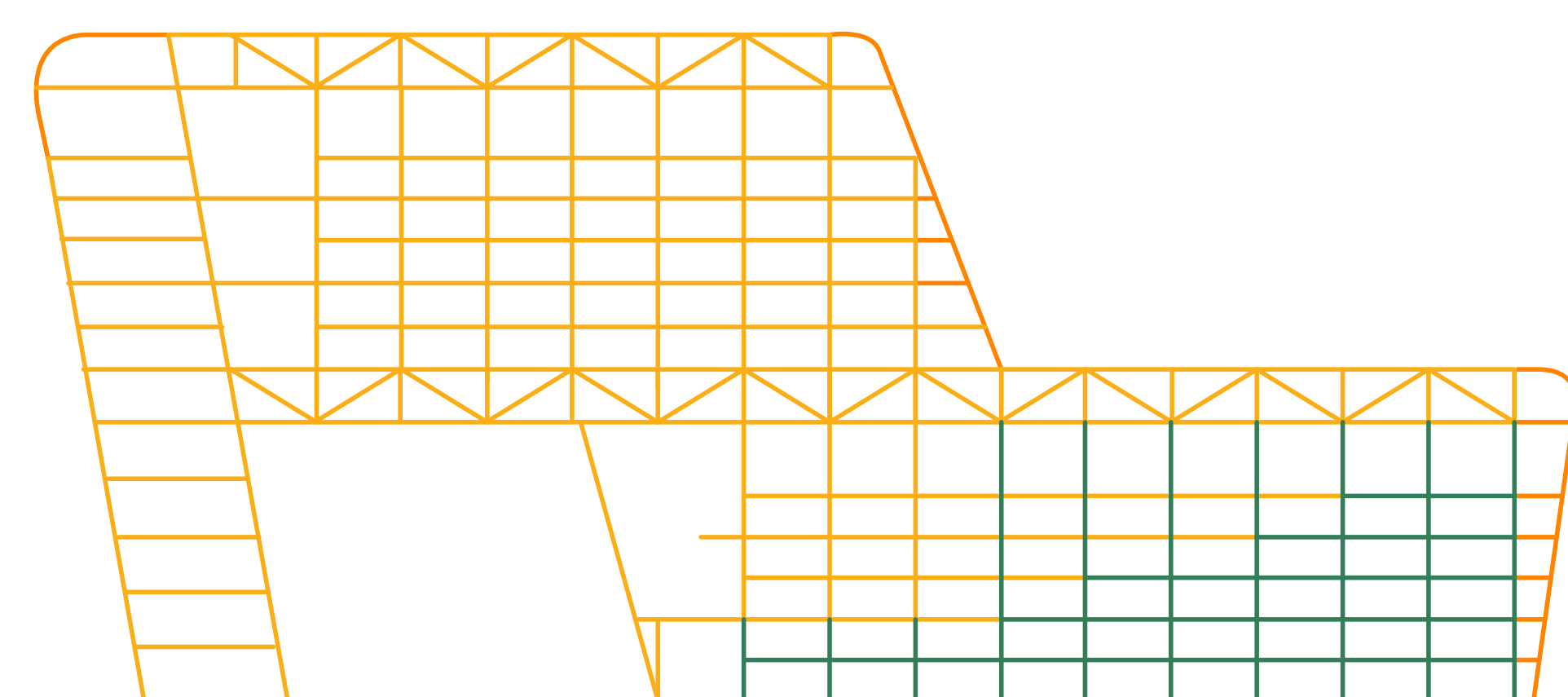


Construction - Thirteenth floor



Construction materials division - Section North (A)

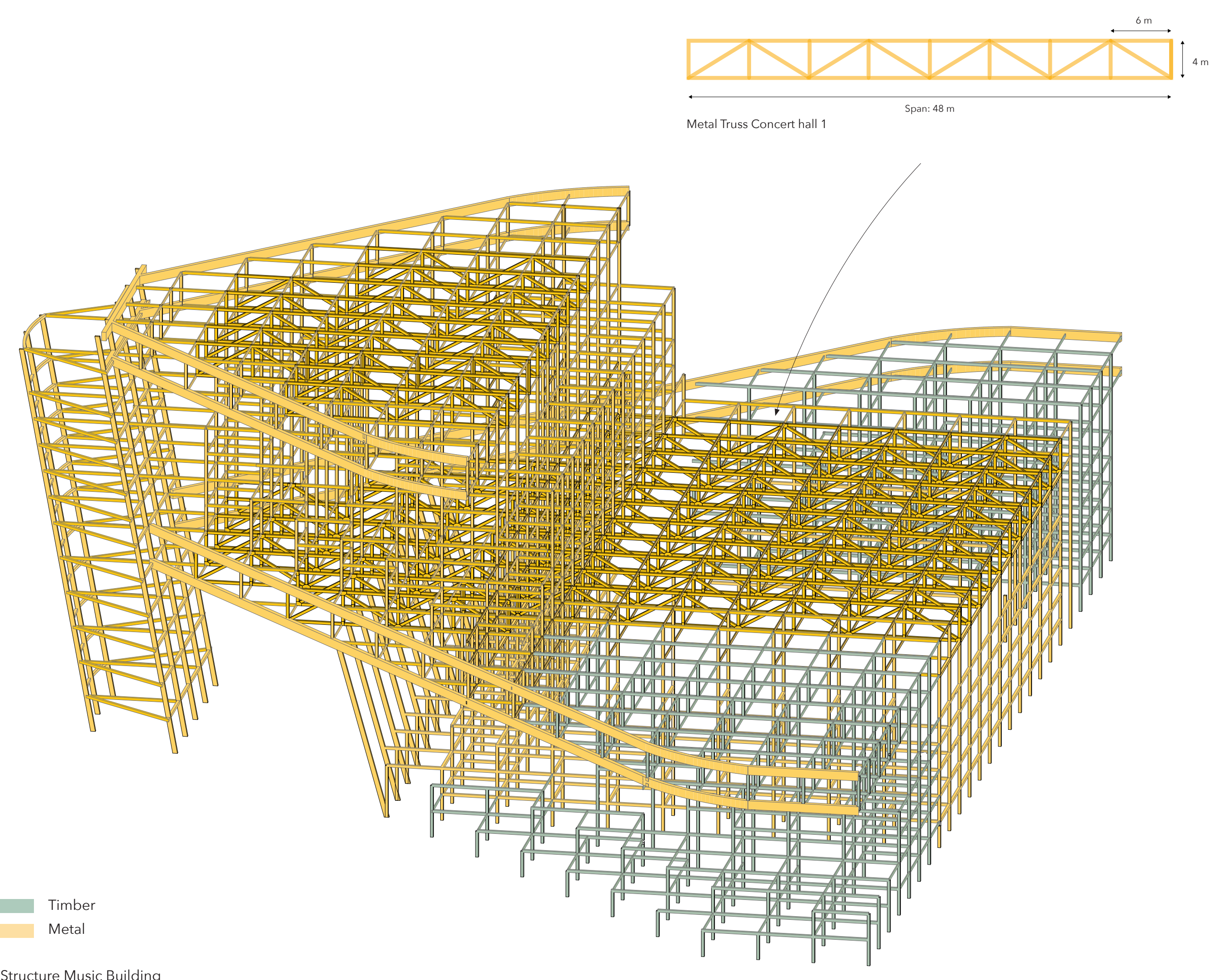
- Timber Construction
- Metal Construction
- Lightweight Construction



Construction materials division - Section East (B)

**Music Marvel**  
Public Building Graduation Studio  
MSc Architecture, Urbanism & Building Sciences  
2021/2022

Romy Koreman



Structure Music Building