

BRINGING BACK  
*MOVEMENT* IN  
SKYDEBANEHAVEN

---

Anne Chantal Brand

TECHNICAL DRAWINGS



# BRINGING BACK *MOVEMENT* IN SKYDEBANEHAVEN

---

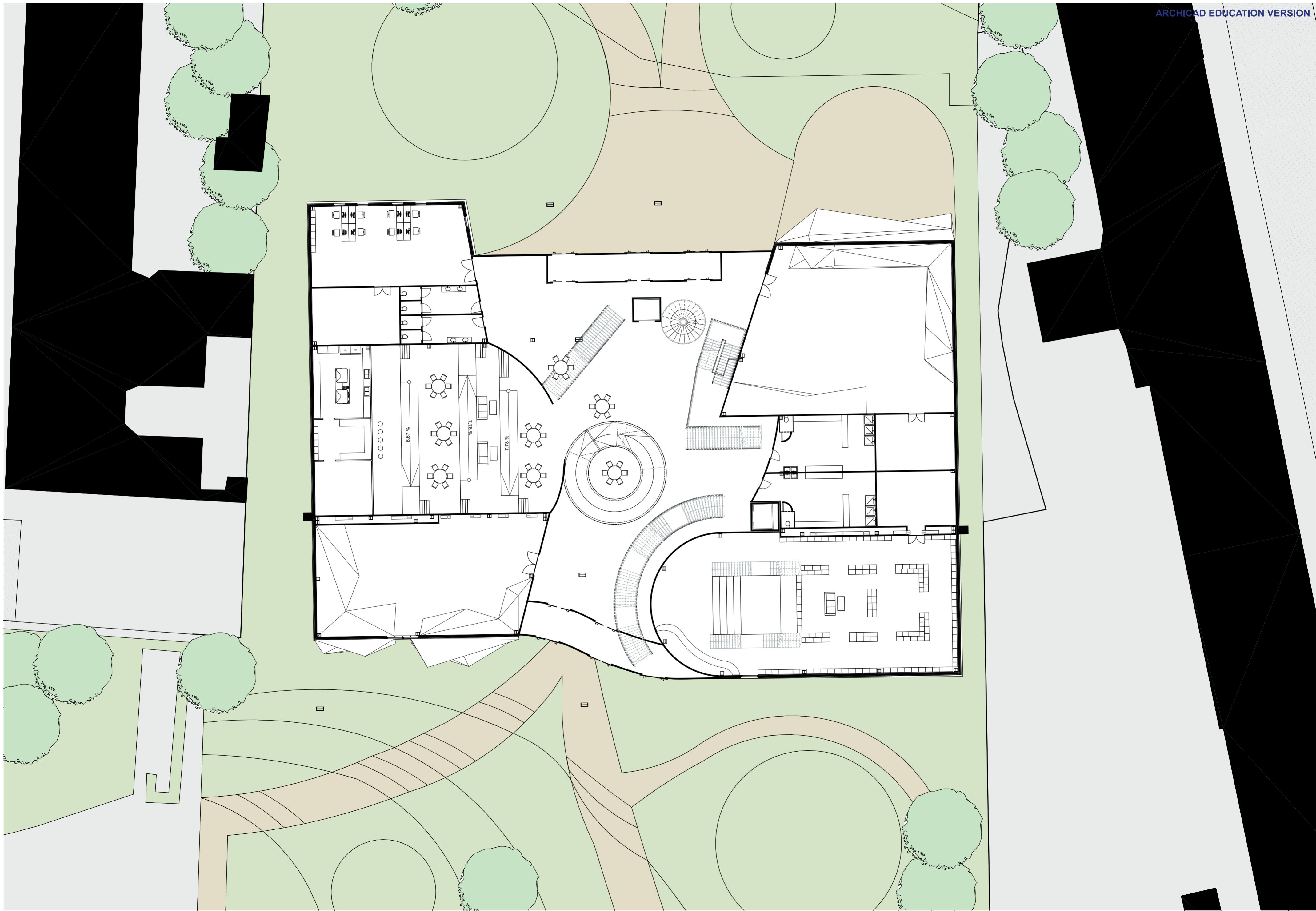
Anne Chantal Brand

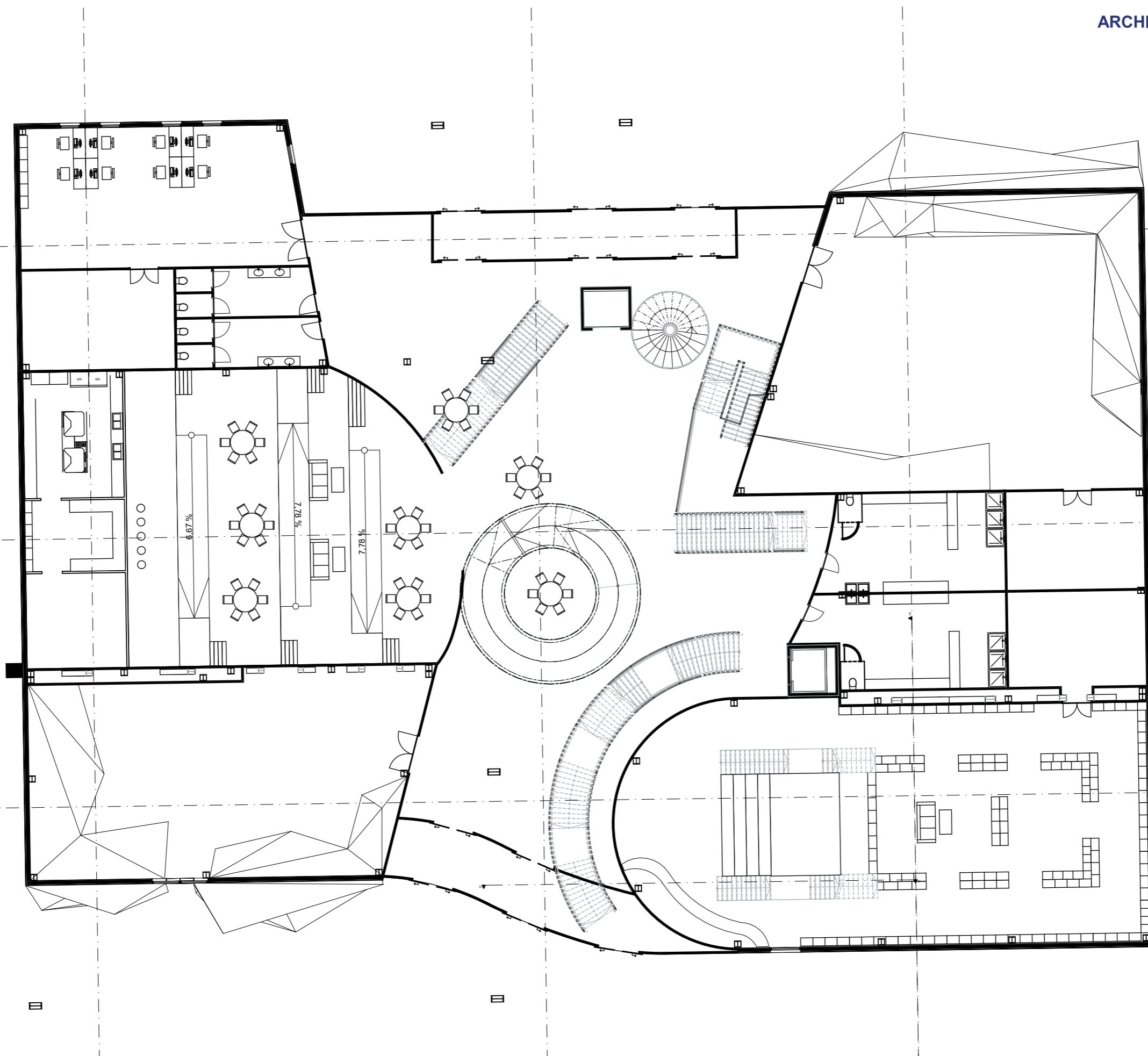
TECHNICAL DRAWINGS

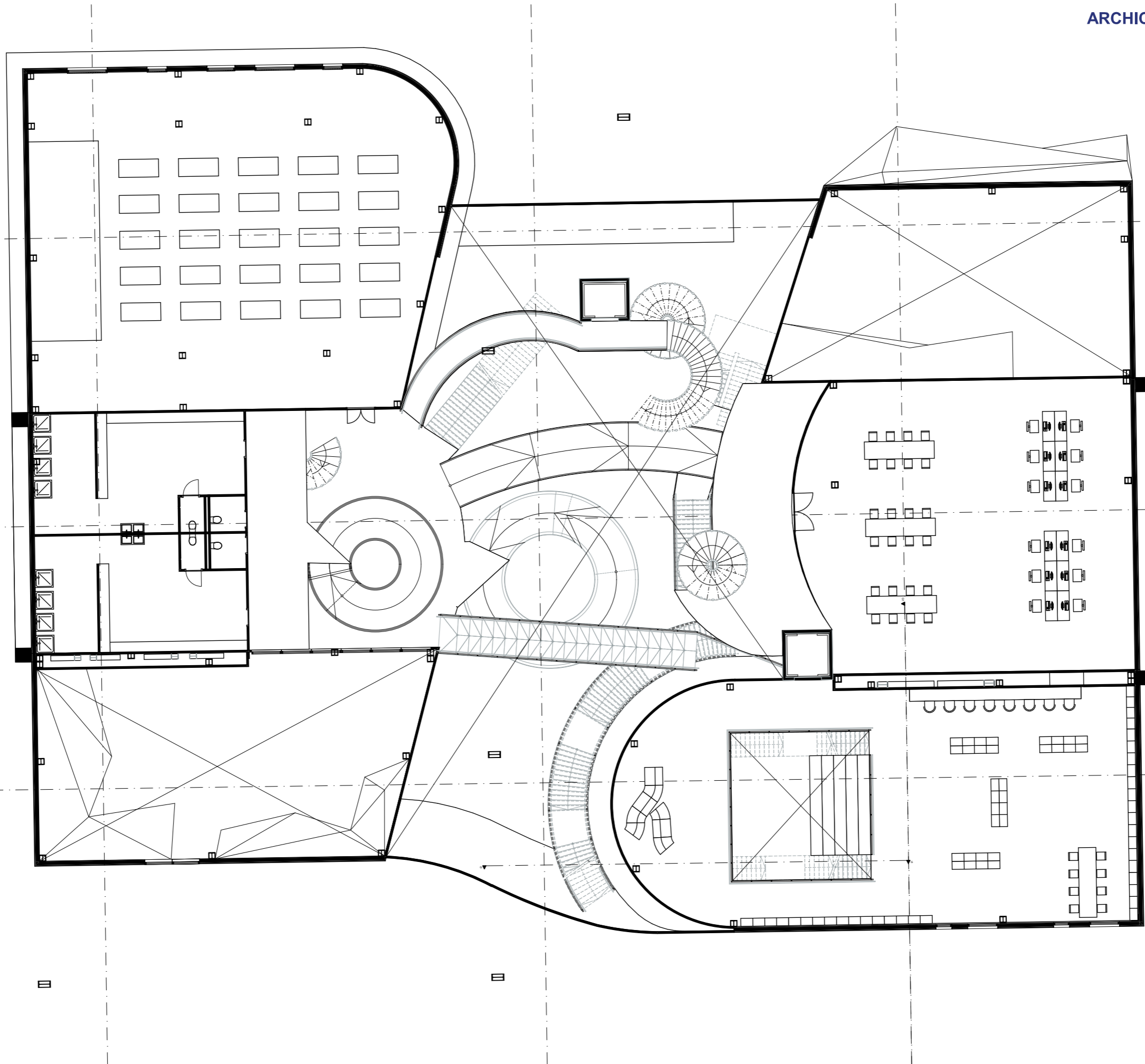
CONTENT:

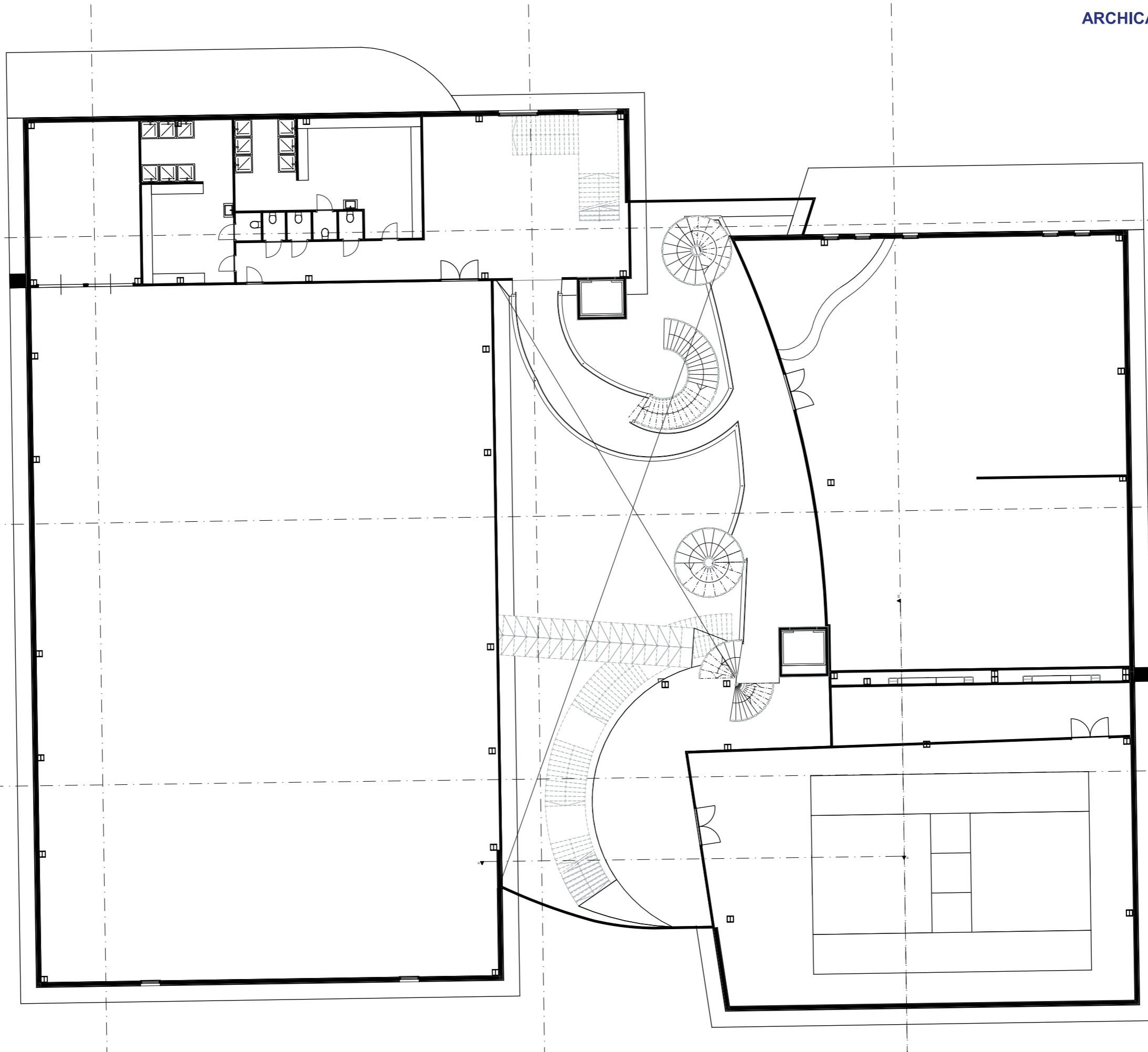
Nolli drawing 1:1000	PAG. 04
Ground floor drawing 1:200	PAG. 05
Ground floor 1:500	PAG. 06
First floor 1:500	PAG. 07
Second floor 1:500	PAG. 08
Third floor 1:500	PAG. 09
Sections 1:1000	PAG. 10
Sections 1:500	PAG. 11
Section 1:200	PAG. 12
Facades 1:200	PAG. 13 & 14
Facades 1:500	PAG. 15
Facade fragments 1:20	PAG. 16 & 17
Details 1:5	PAG. 18 -25
Principle details stairs and ramps 1:20 & 1:5	PAG. 26-30



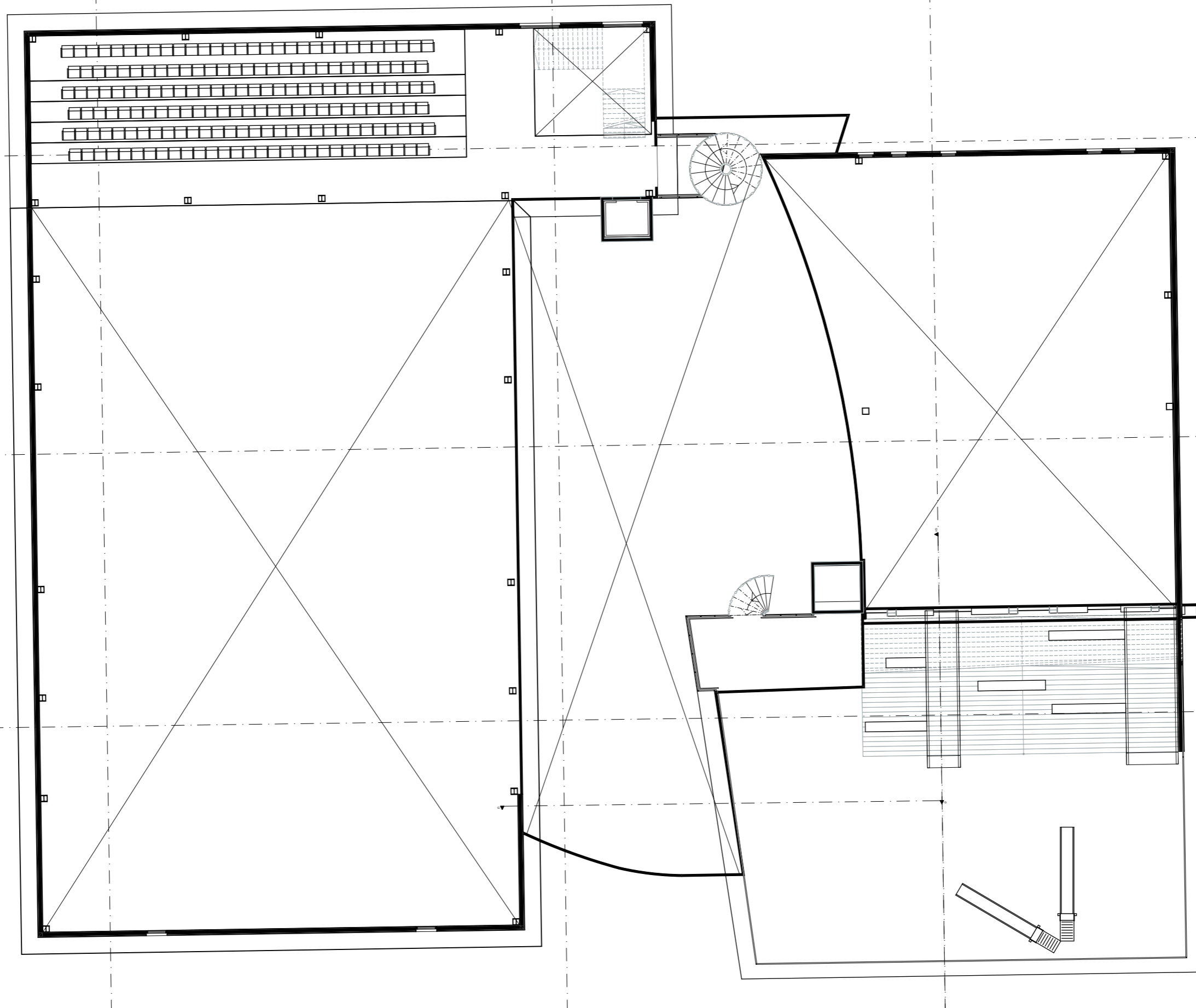




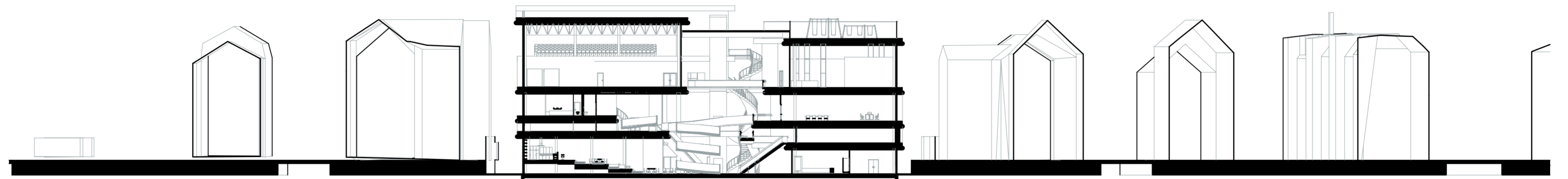
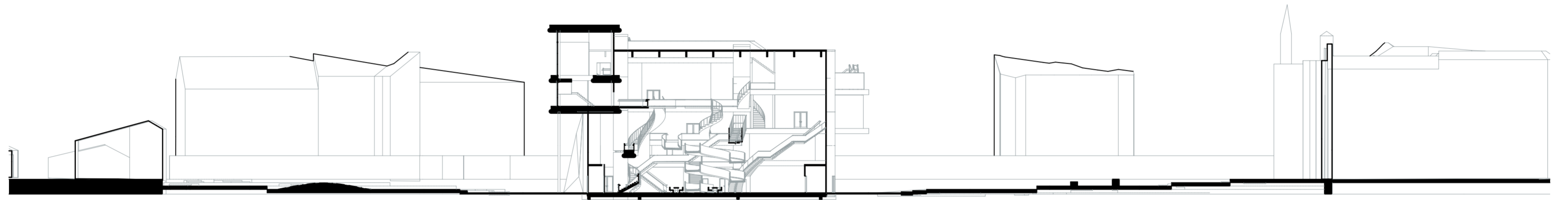


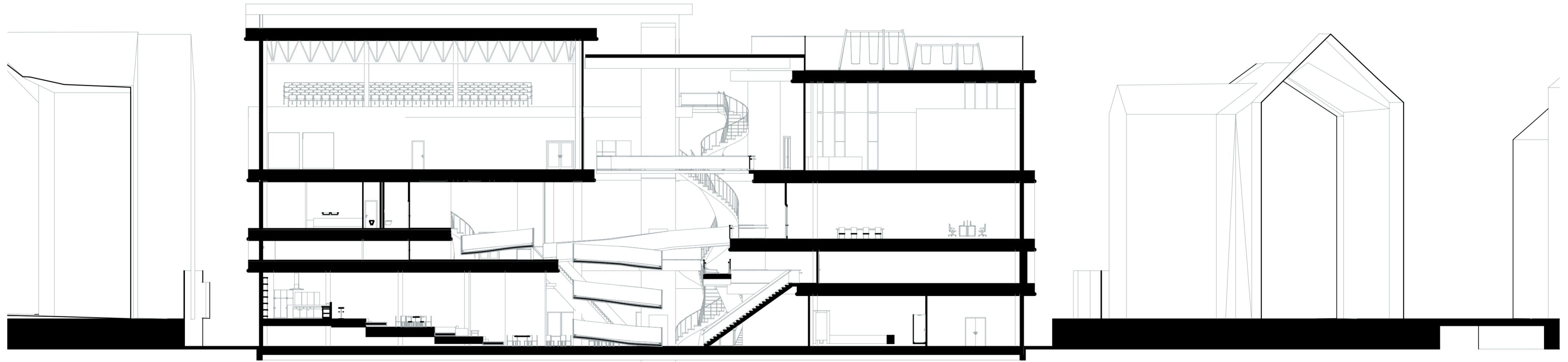


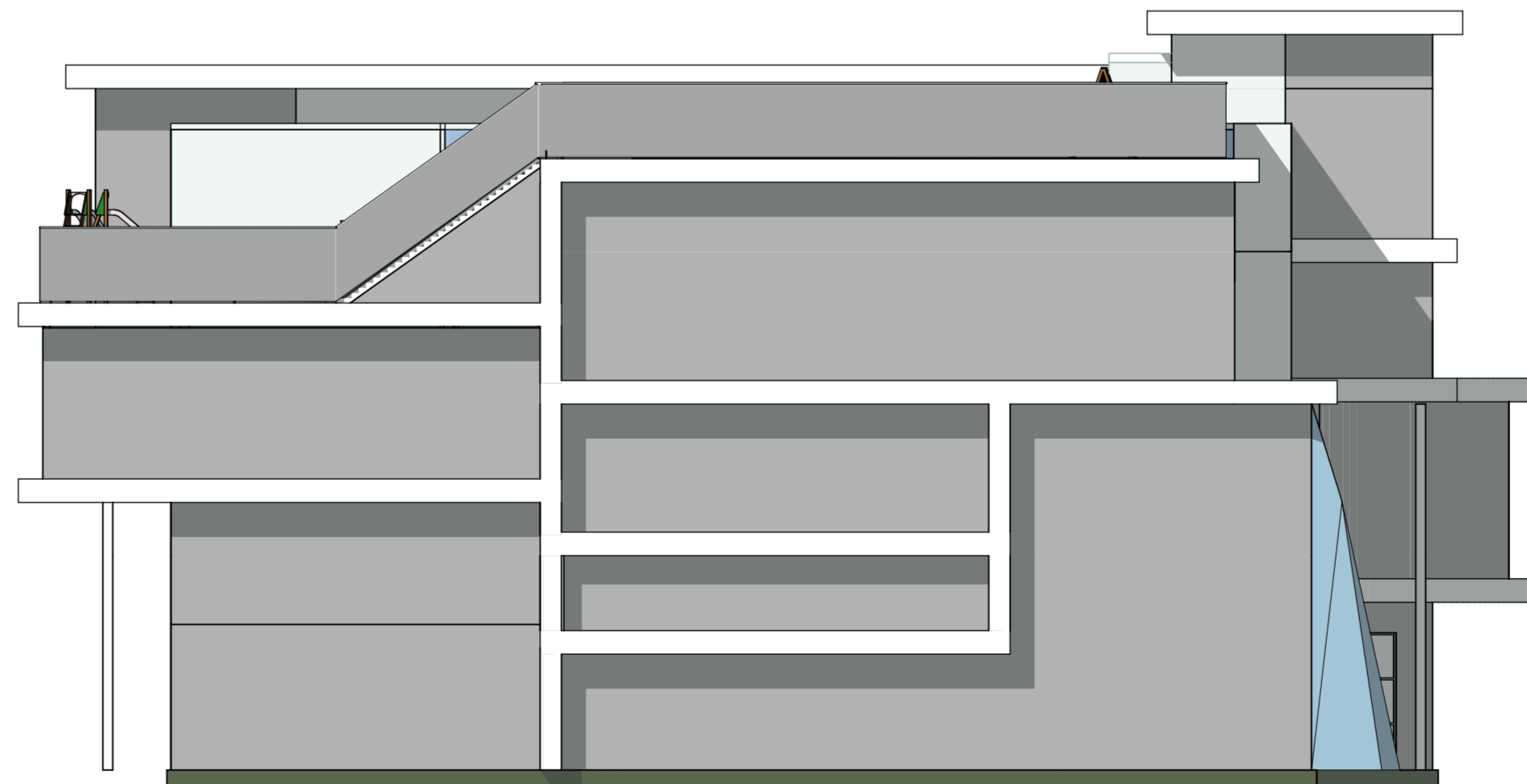


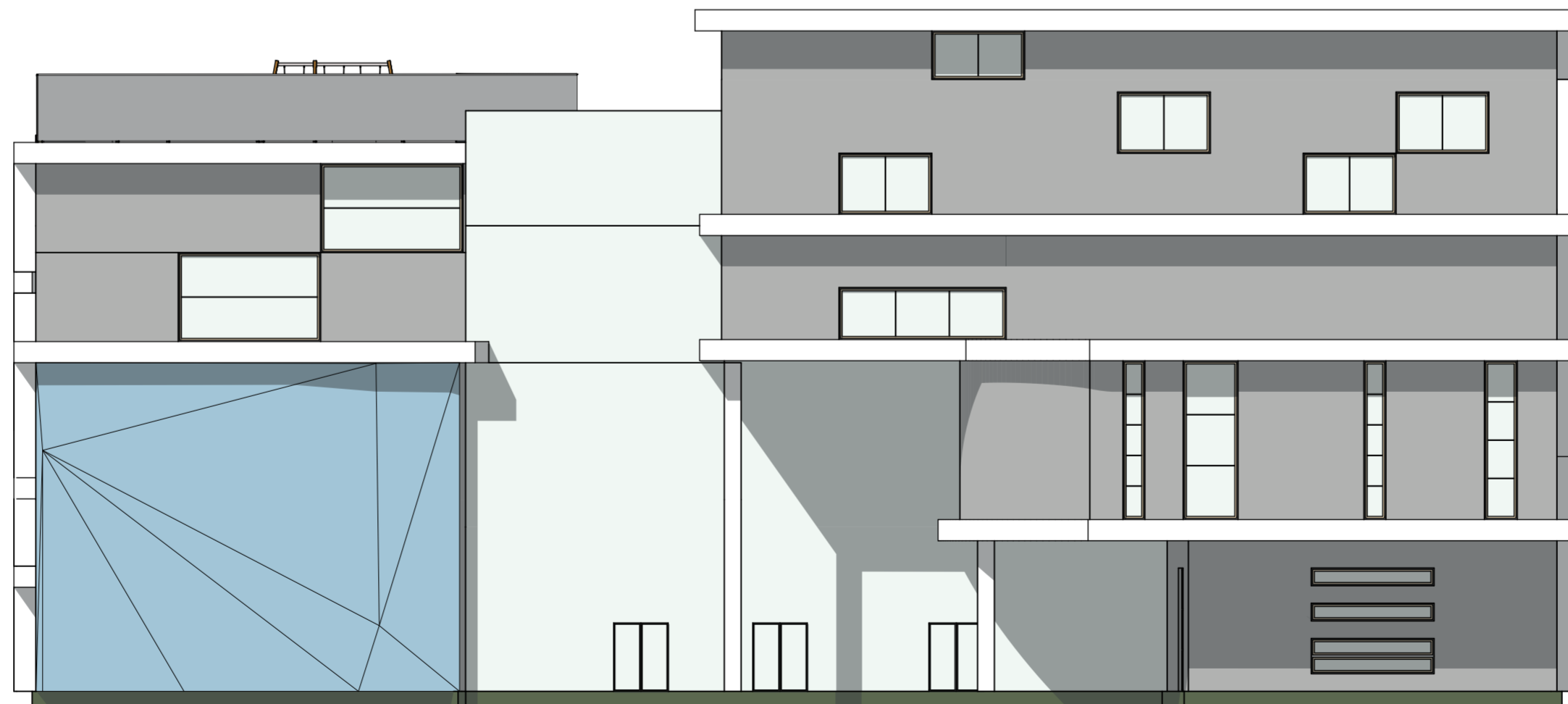
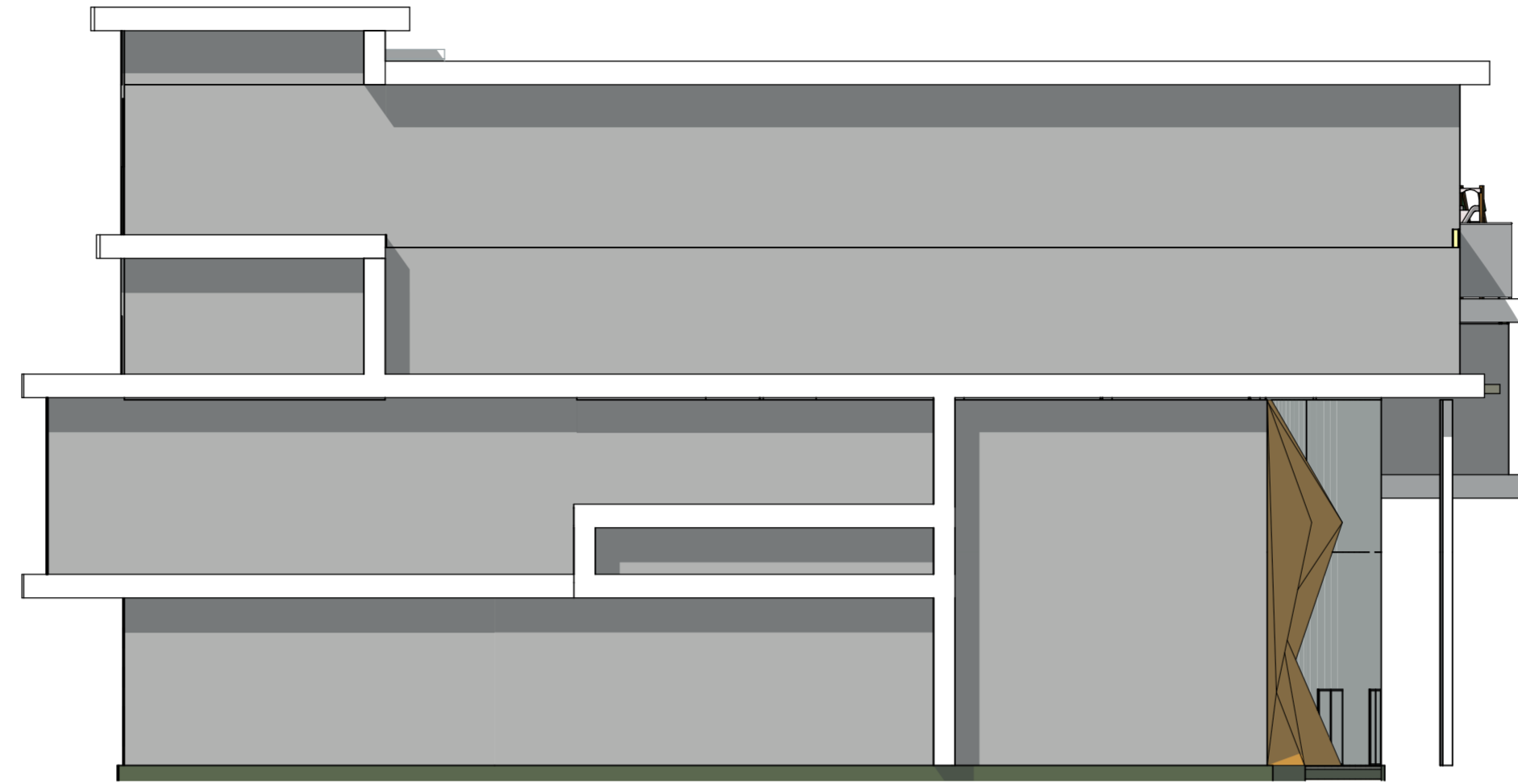


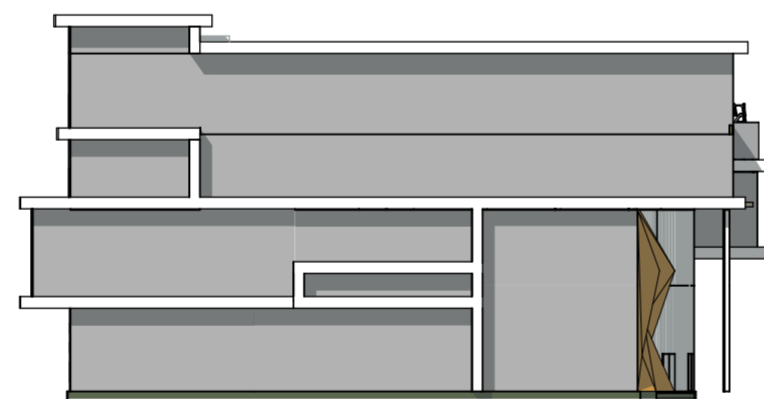
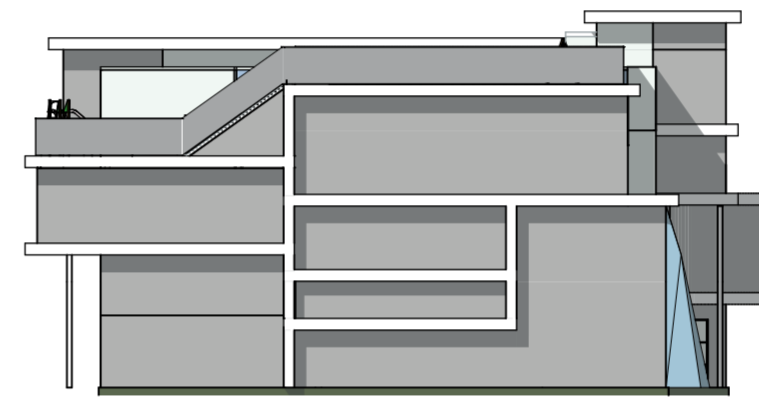








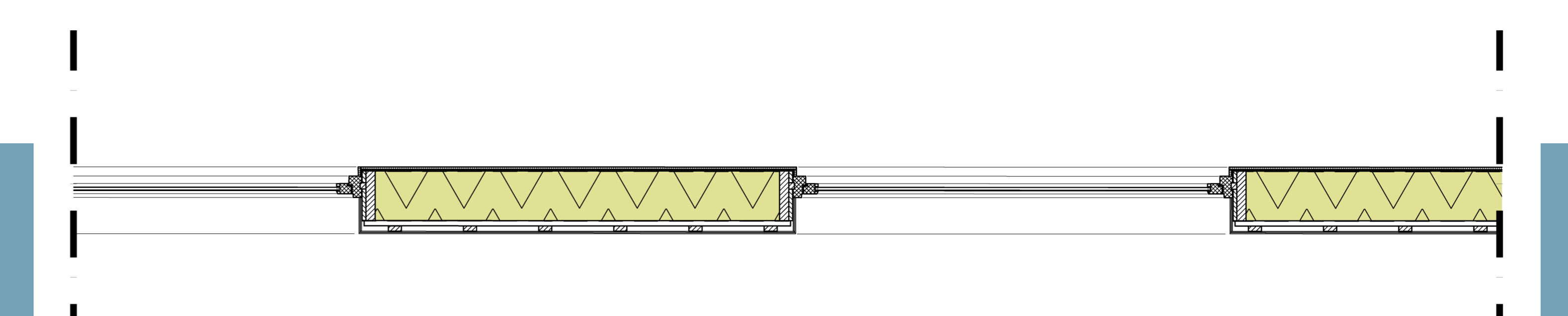
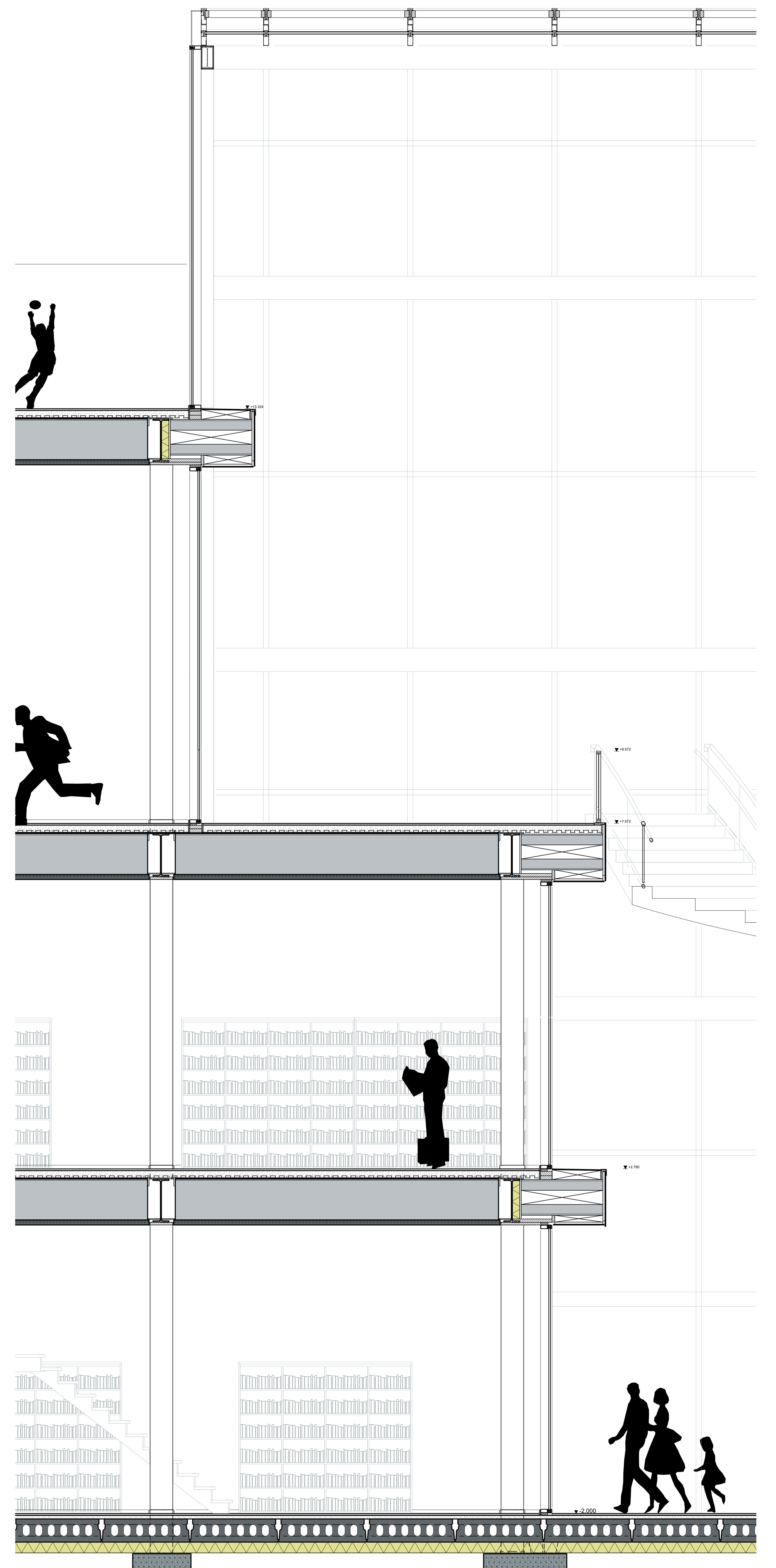
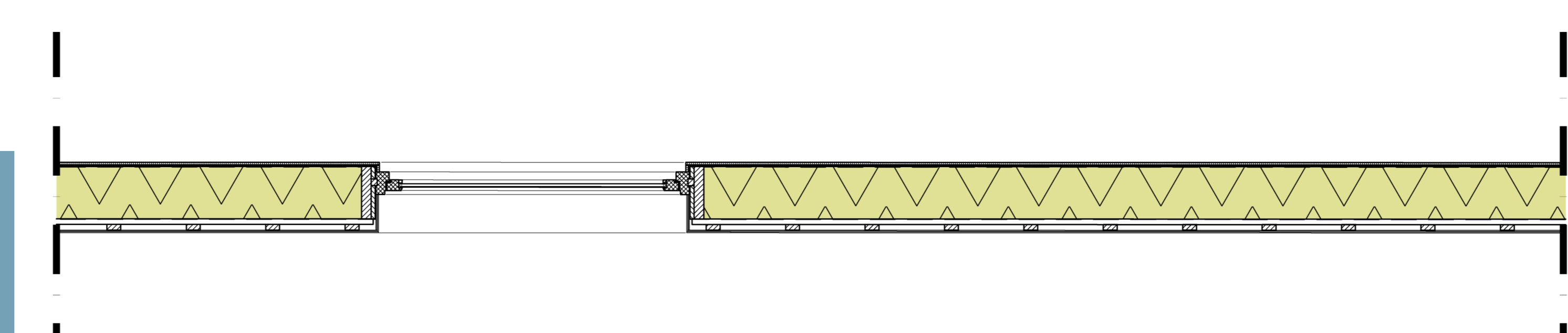
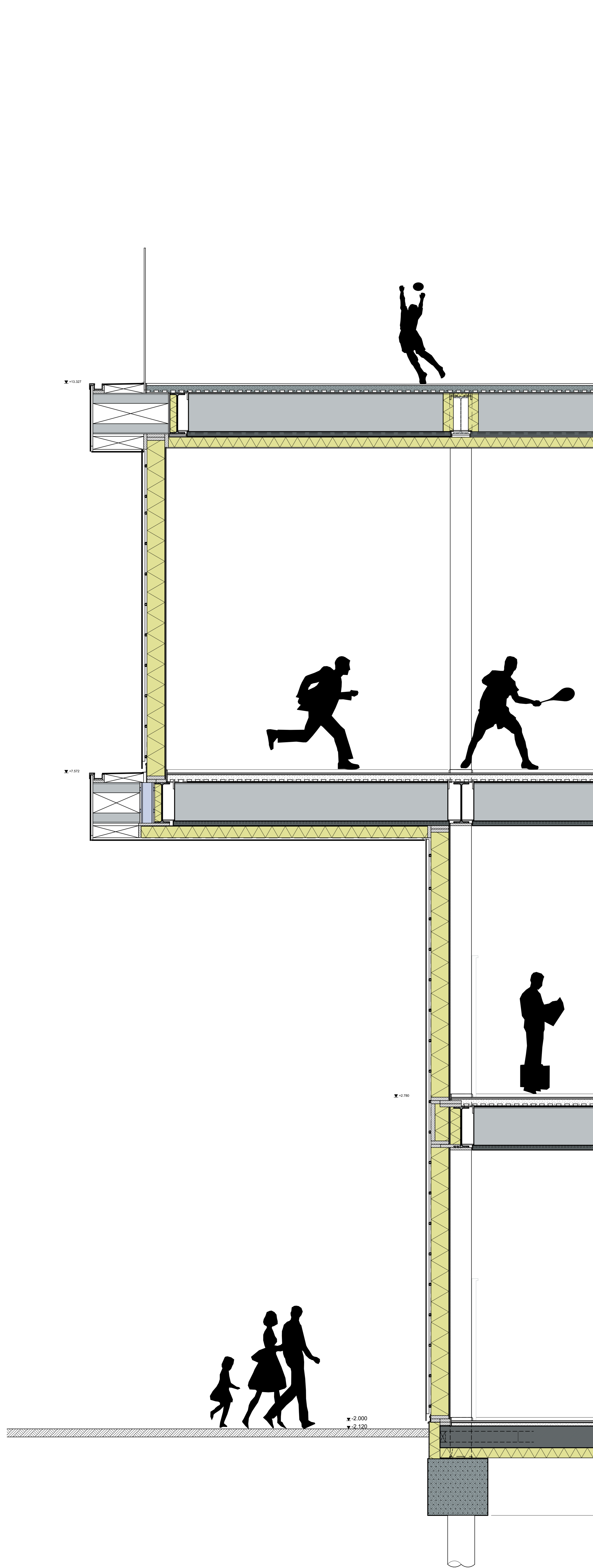
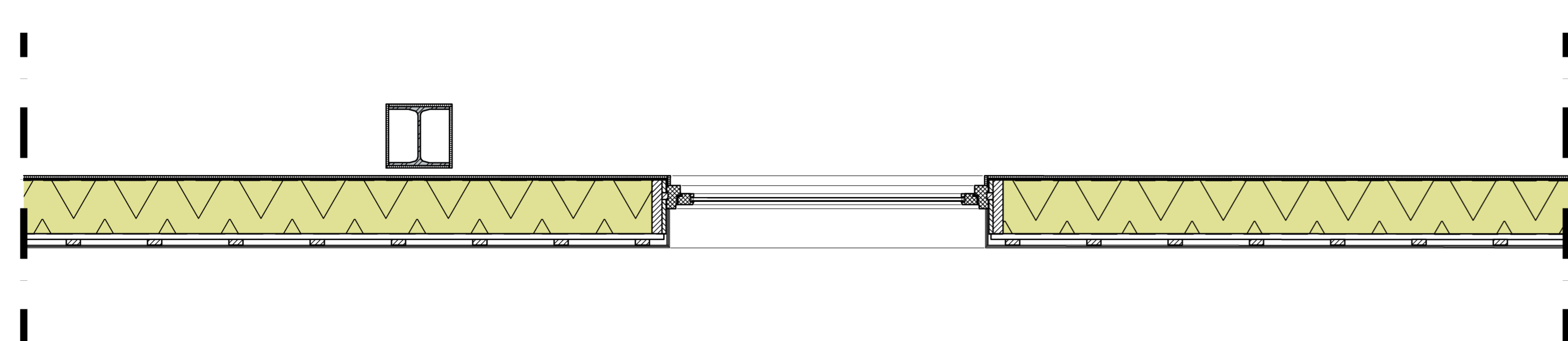
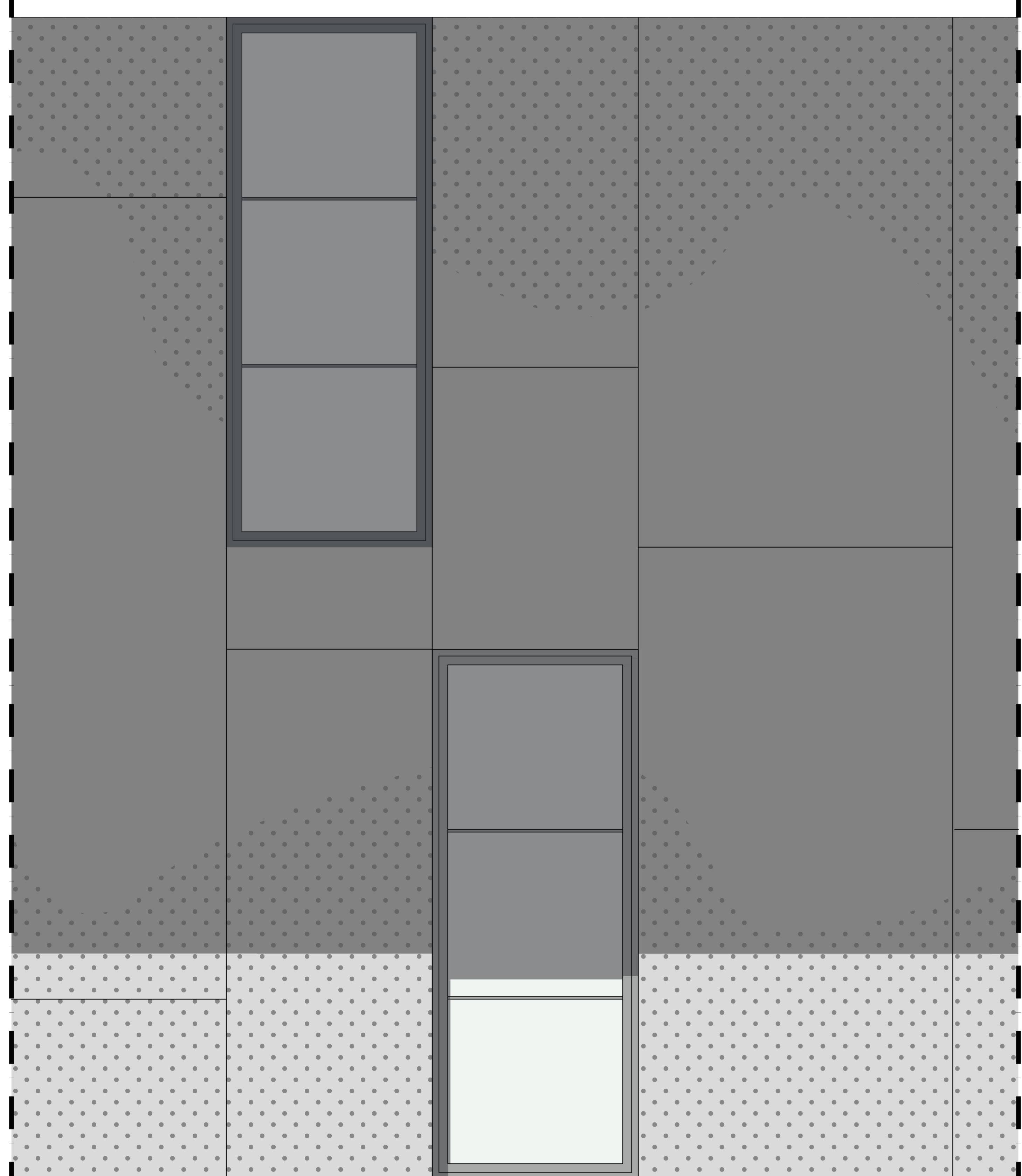
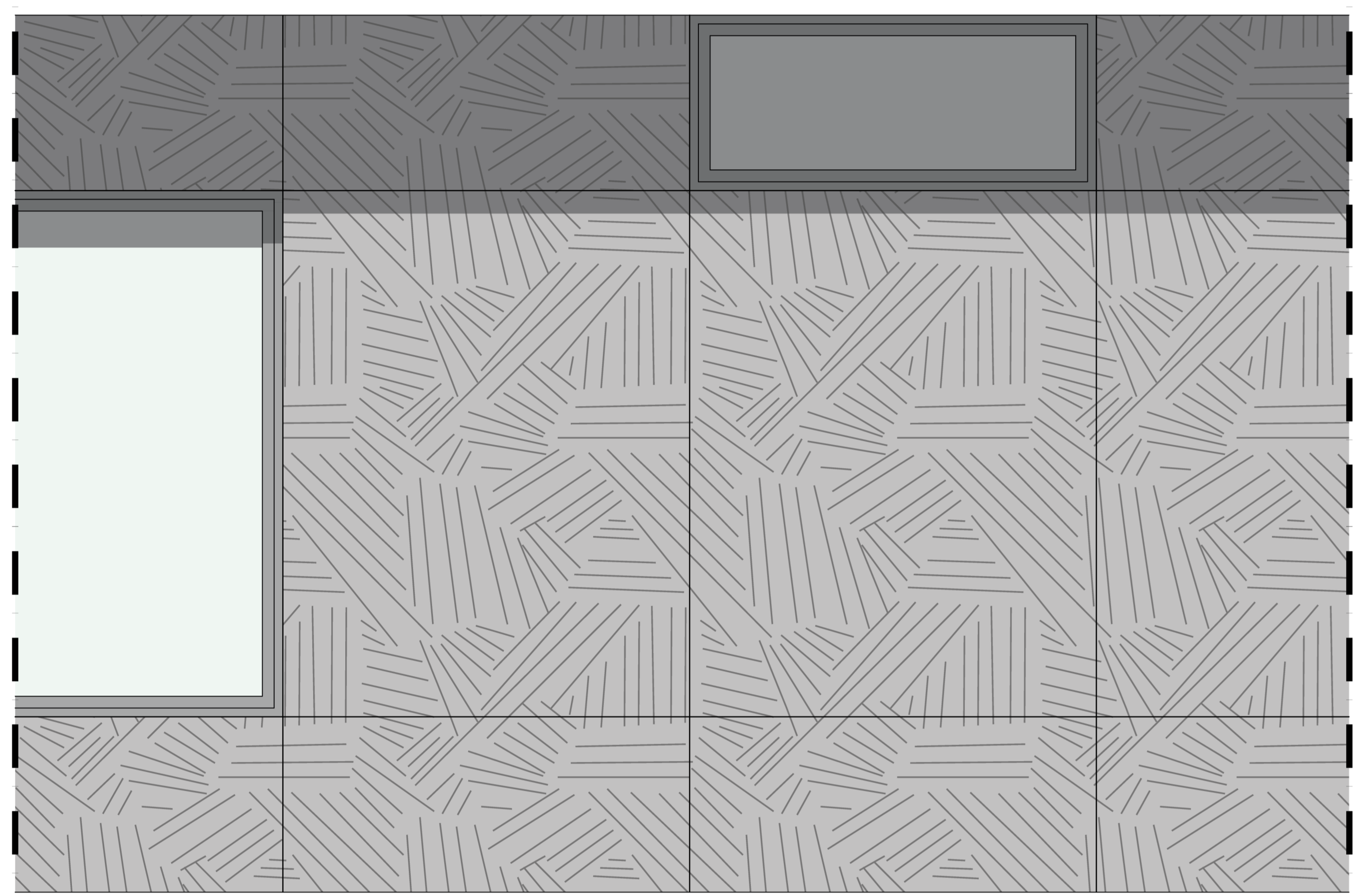
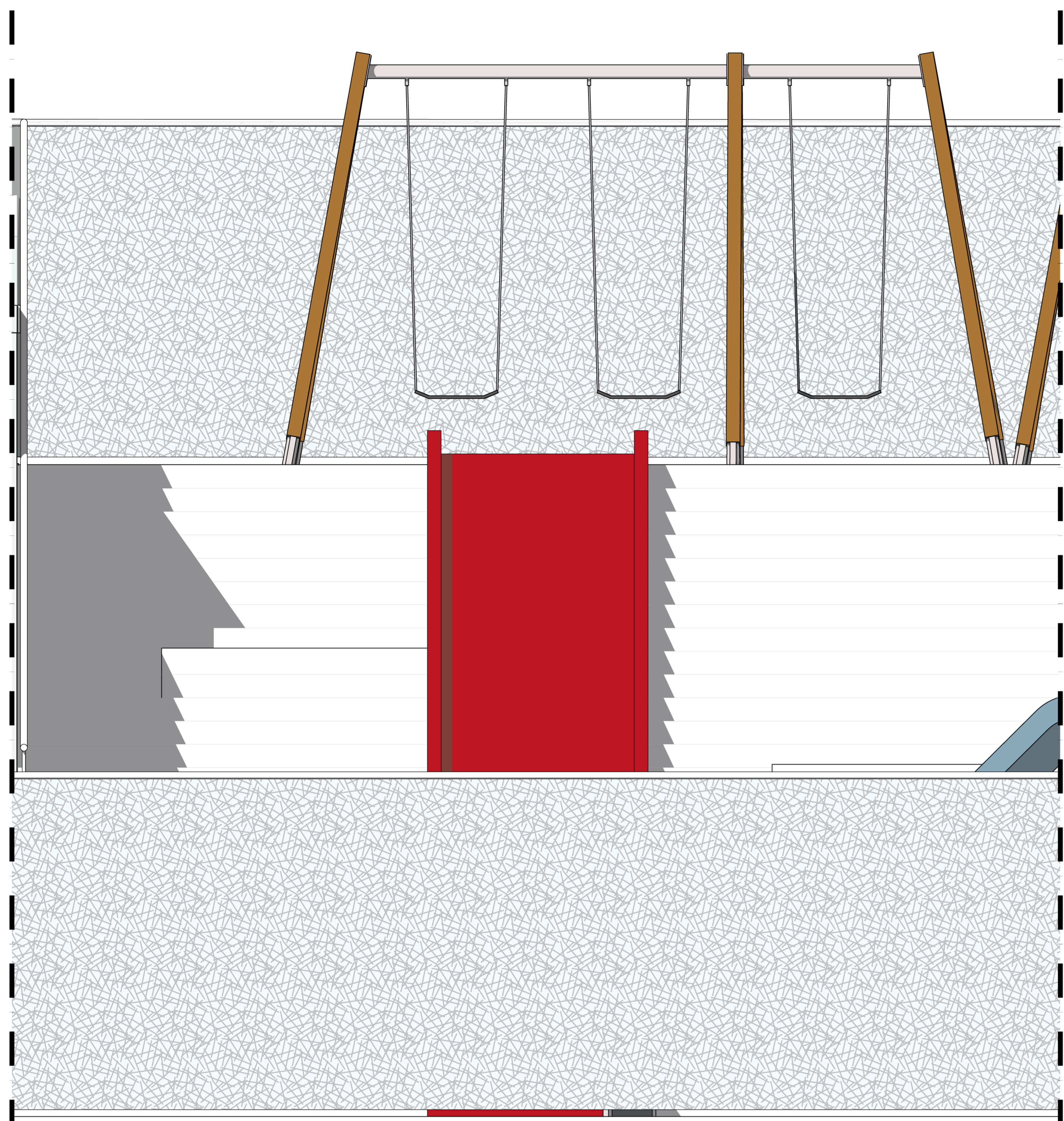




# FACADE FRAGMENTS 1:20

FACADE FRONT VIEW | FACADE FRAGMENT OUTSIDE | FACADE FRAGMENT INSIDE

GROUND FLOOR HORIZONTAL FRAGMENT | FIRST FLOOR HORIZONTAL FRAGMENT | SECOND FLOOR HORIZONTAL FRAGMENT



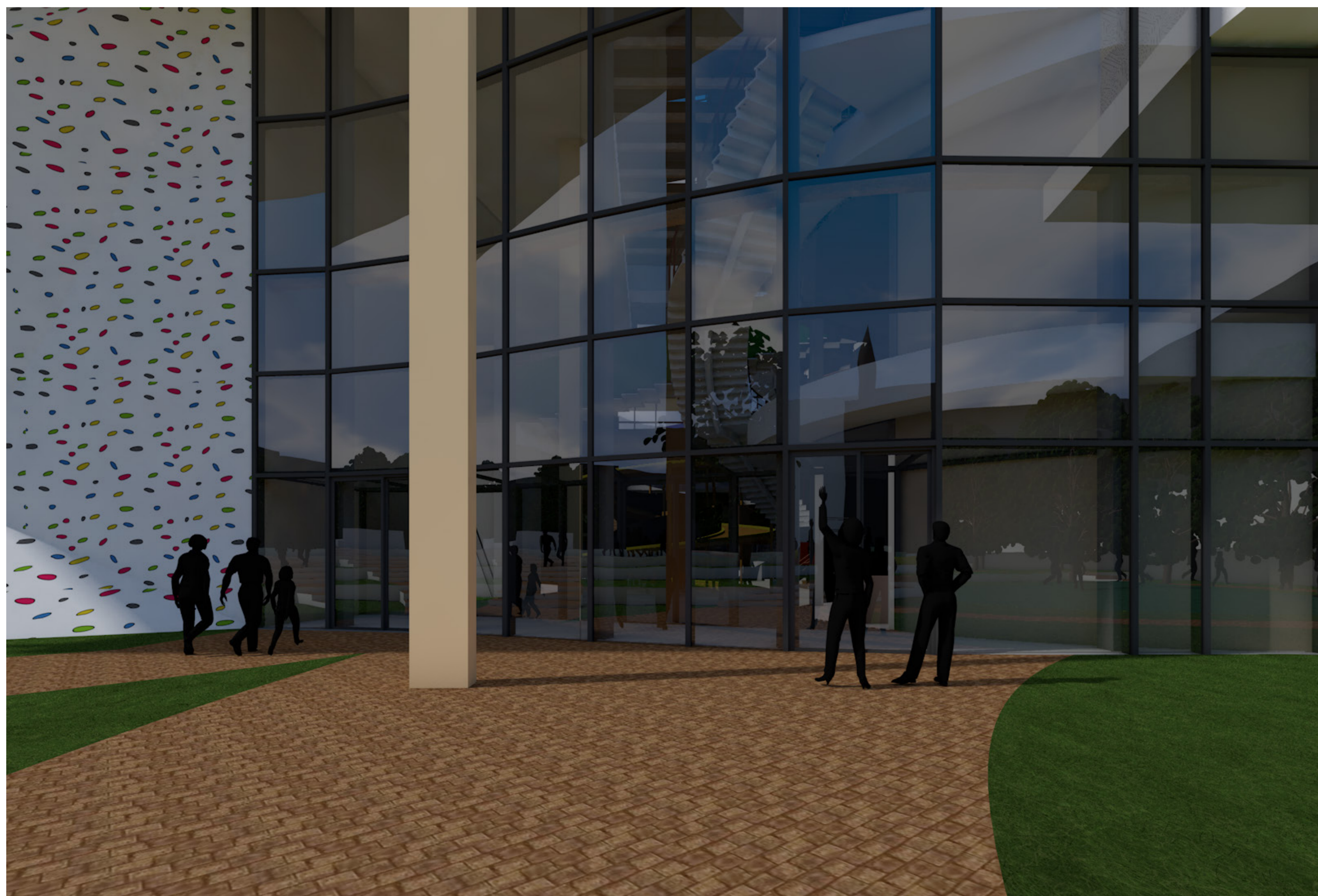




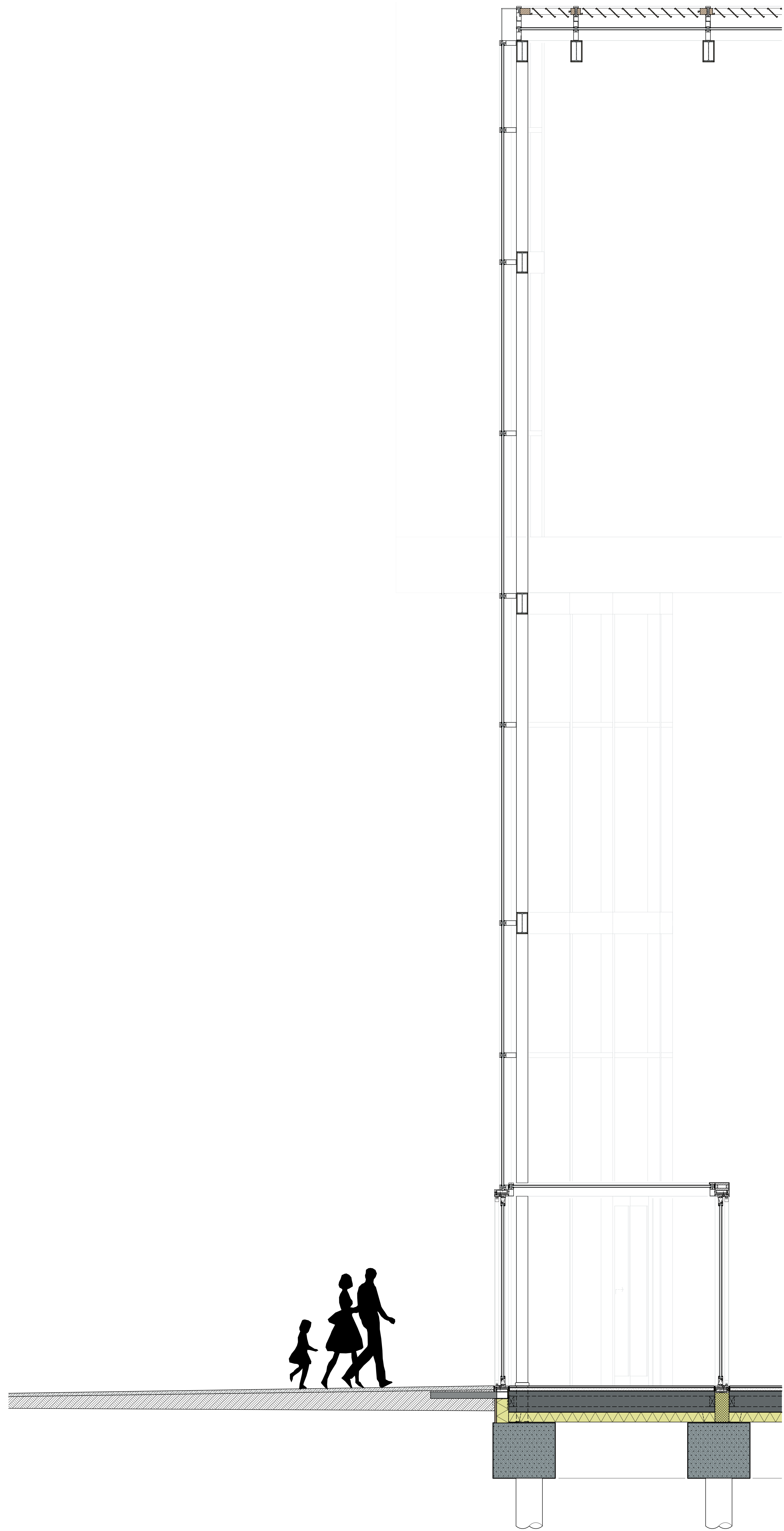
VIEW EXTERIOR OF ATRIUM



VIEW EXTERIOR OF ATRIUM



VIEW EXTERIOR OF ATRIUM



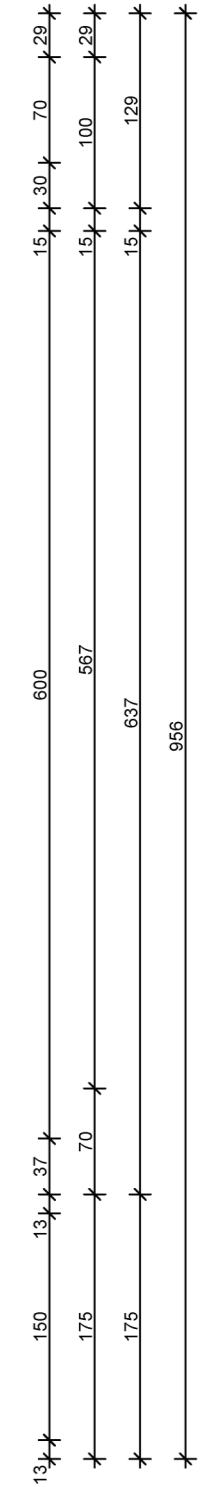
**build-up cantilever**  
 stucco  
 sheet material (wood)  
 regulating material between  
 steel corner profile  
 head plate on steel profile  
 soundproof and  
 fire resistant material  
 IPE600 beam

metal fence

**build-up roof floor:**  
 floor finish  
 sprung floor (dovetail plate  
 and cement creed)  
 SlimLine floor  
 wooden sheet material  
 insulation  
 wooden sheet material and  
 finish

▼ +13.489  
 ▼ +13.462

▼ +12.469

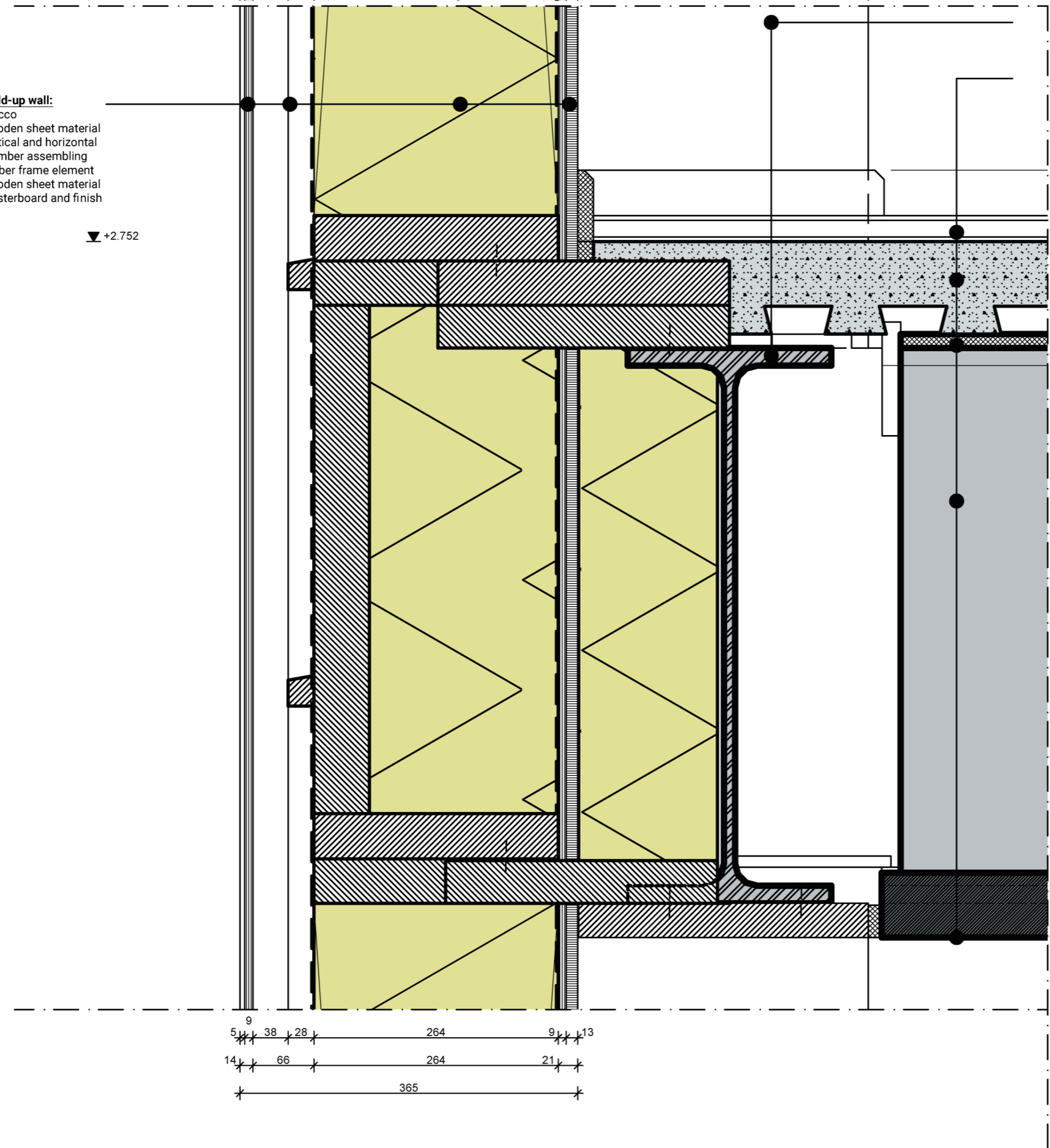


**build-up wall:**  
 stucco  
 wooden sheet material  
 vertical and horizontal  
 timber assembling  
 timber frame element  
 wooden sheet material  
 plasterboard and finish

▼ +2.752

steel column HE300A  
 steel beam IPE600

**build-up roof floor:**  
 floor finish  
 variotherm underfloor heating and cooling  
 sprung floor (dovetail plate and cement creed)  
 acoustic interruption  
 SlimLine floor and finish



9  
 5 38 28 264 9 13  
 14 66 264 21  
 365

28  
 70  
 100  
 30  
 15  
 15  
 567  
 567  
 760  
 37 33  
 70

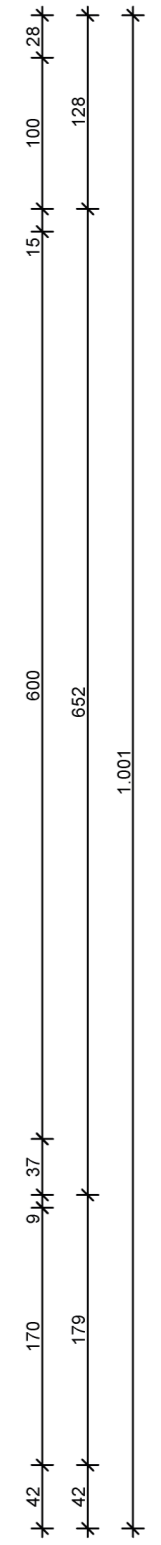
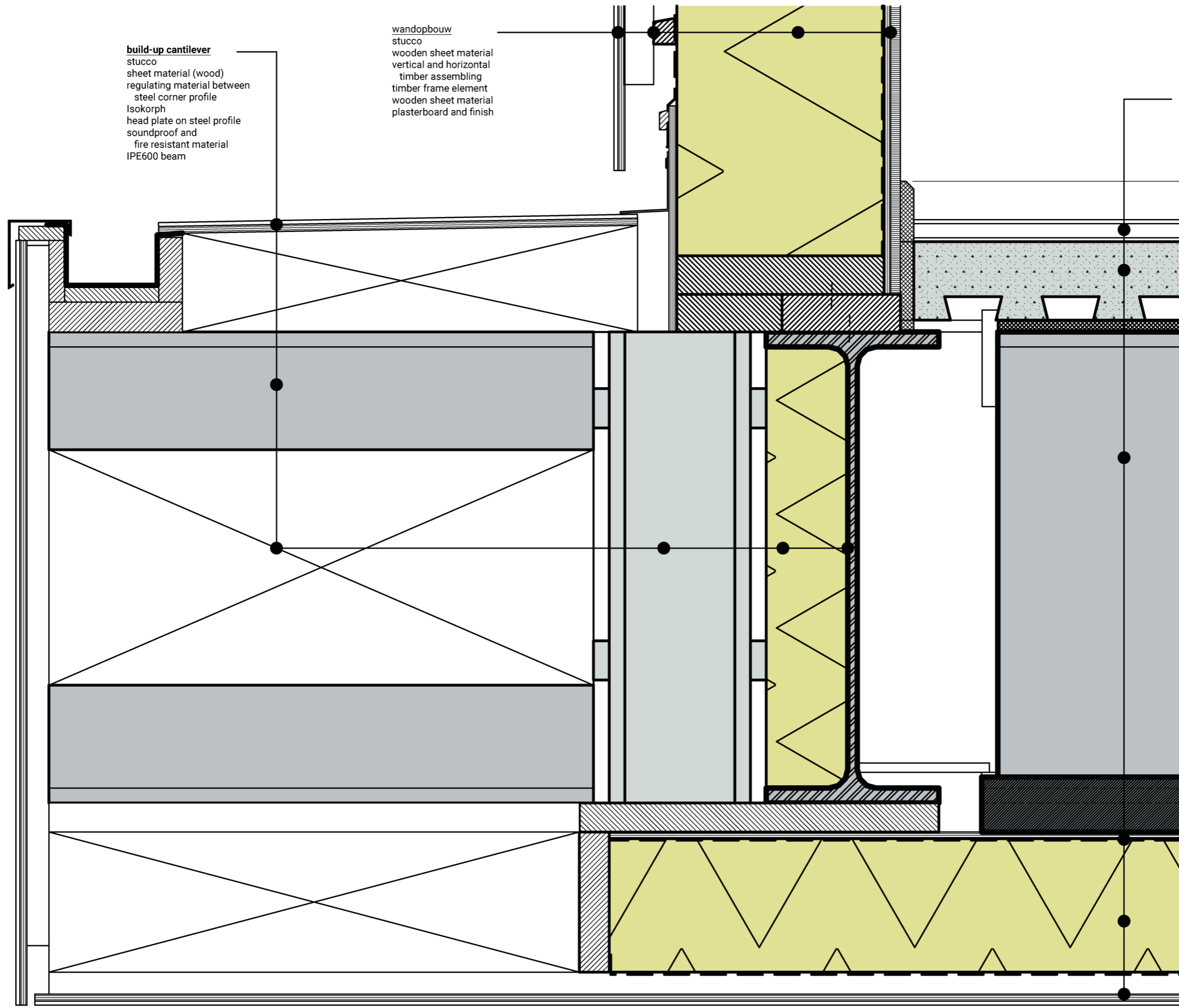
▼ +7.512

**build-up cantilever**  
stucco  
sheet material (wood)  
regulating material between  
steel corner profile  
Isokorph  
head plate on steel profile  
soundproof and  
fire resistant material  
IPE600 beam

wandopbouw  
stucco  
wooden sheet material  
vertical and horizontal  
timber assembling  
timber frame element  
wooden sheet material  
plasterboard and finish

**build-up roof floor:**  
floor finish  
variotherm underfloor  
heating and cooling  
sprung floor (dovetail plate  
and cement creed)  
SlimLine floor  
wooden sheet material  
insulation  
wooden sheet material and  
finish

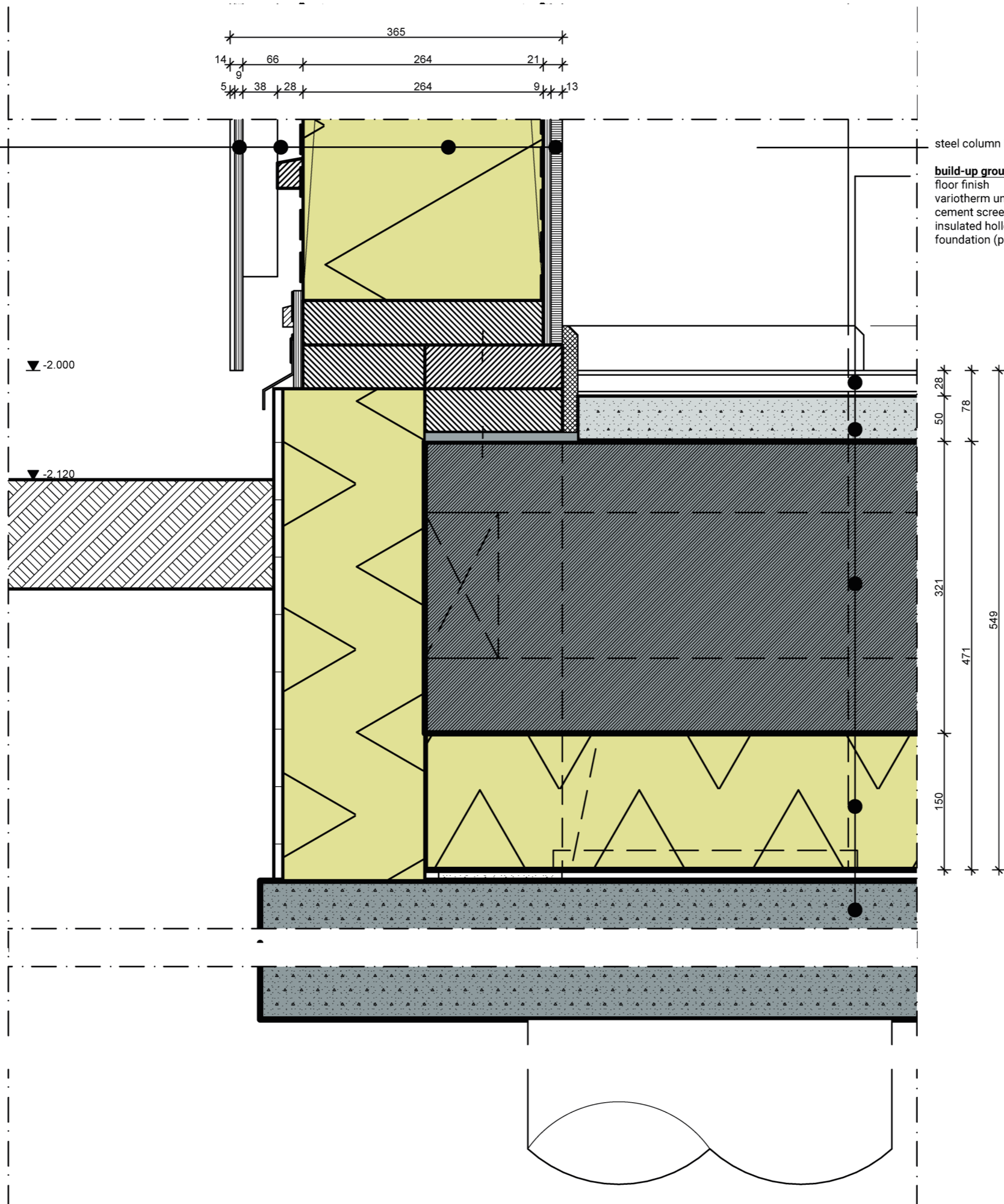
▼ +6.535



**build-up wall:**  
stucco  
wooden sheet material  
vertical and horizontal  
timber assembling  
timber frame element  
wooden sheet material  
plasterboard and finish

steel column HE300A

**build-up ground floor**  
floor finish  
variotherm underfloor heating and cooling  
cement screeds (in situ)  
insulated hollow core slab floor  
foundation (pile)



209

91 118

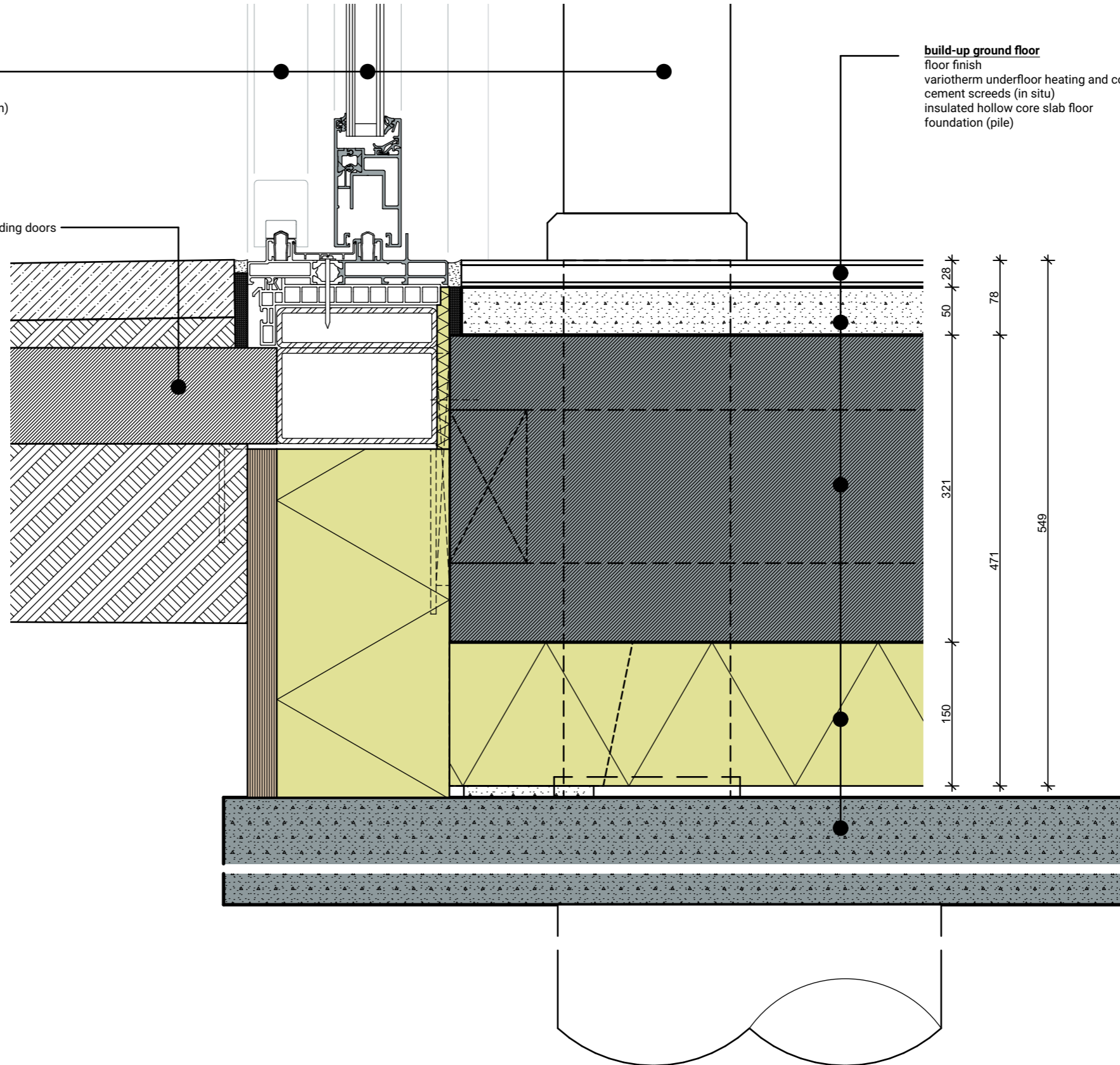
91 70 49

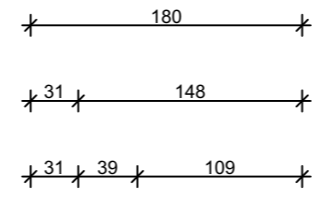
**build-up wall:**  
curtain wall  
curtain wall sliding door  
curtain wall structure (column)

**build-up ground floor**  
floor finish  
variotherm underfloor heating and cooling  
cement screeds (in situ)  
insulated hollow core slab floor  
foundation (pile)

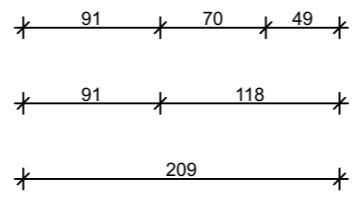
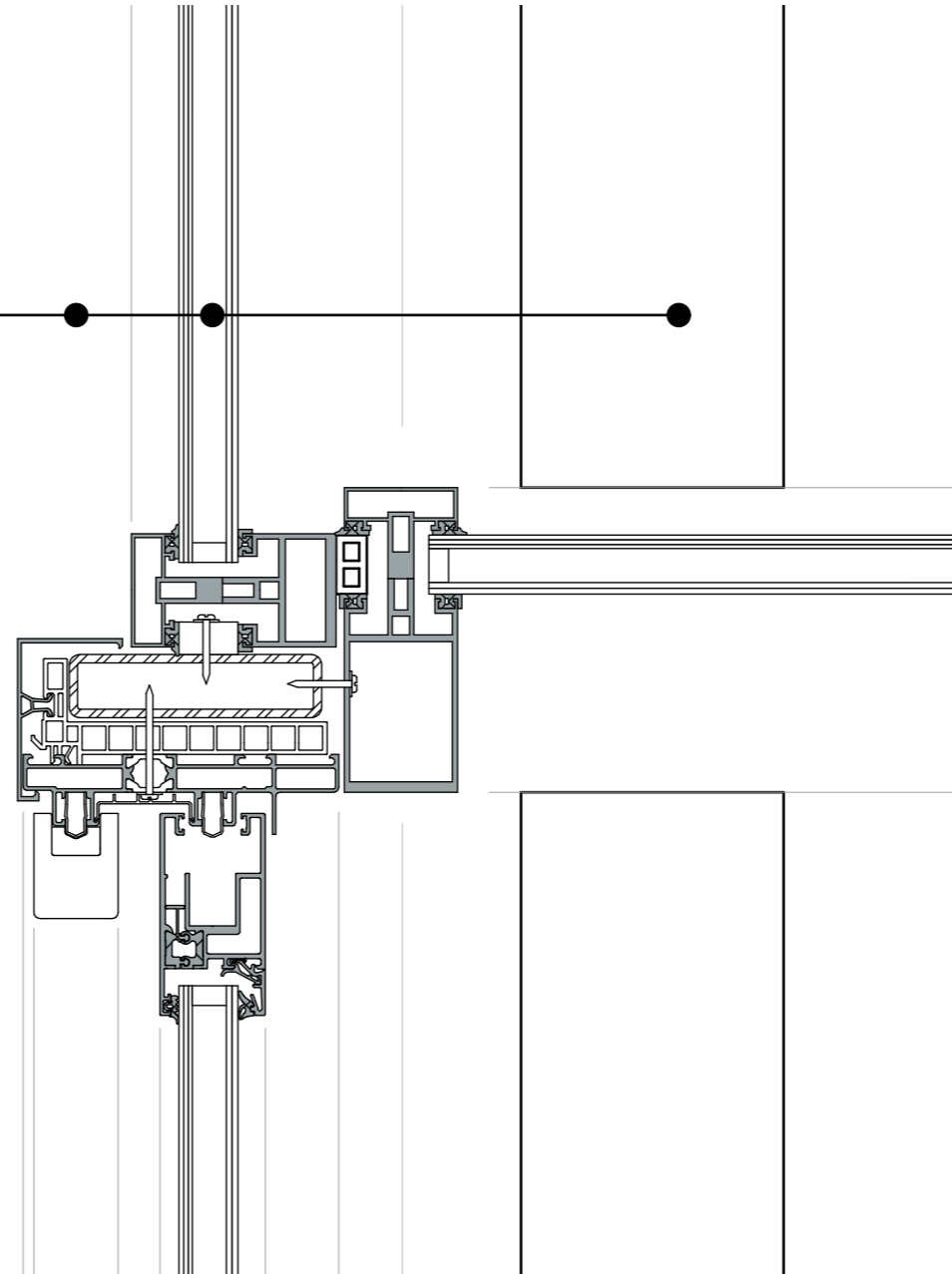
concrete plate for stability sliding doors

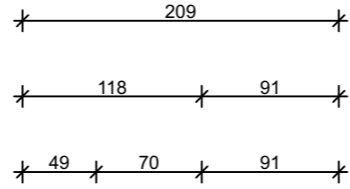
▼ -2.000





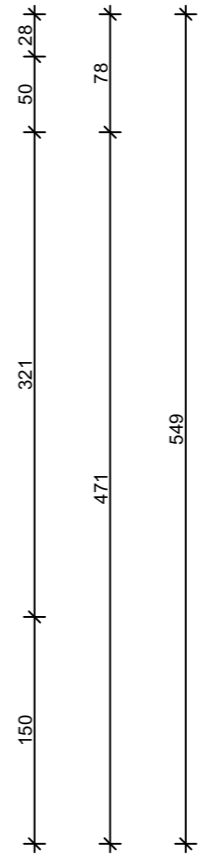
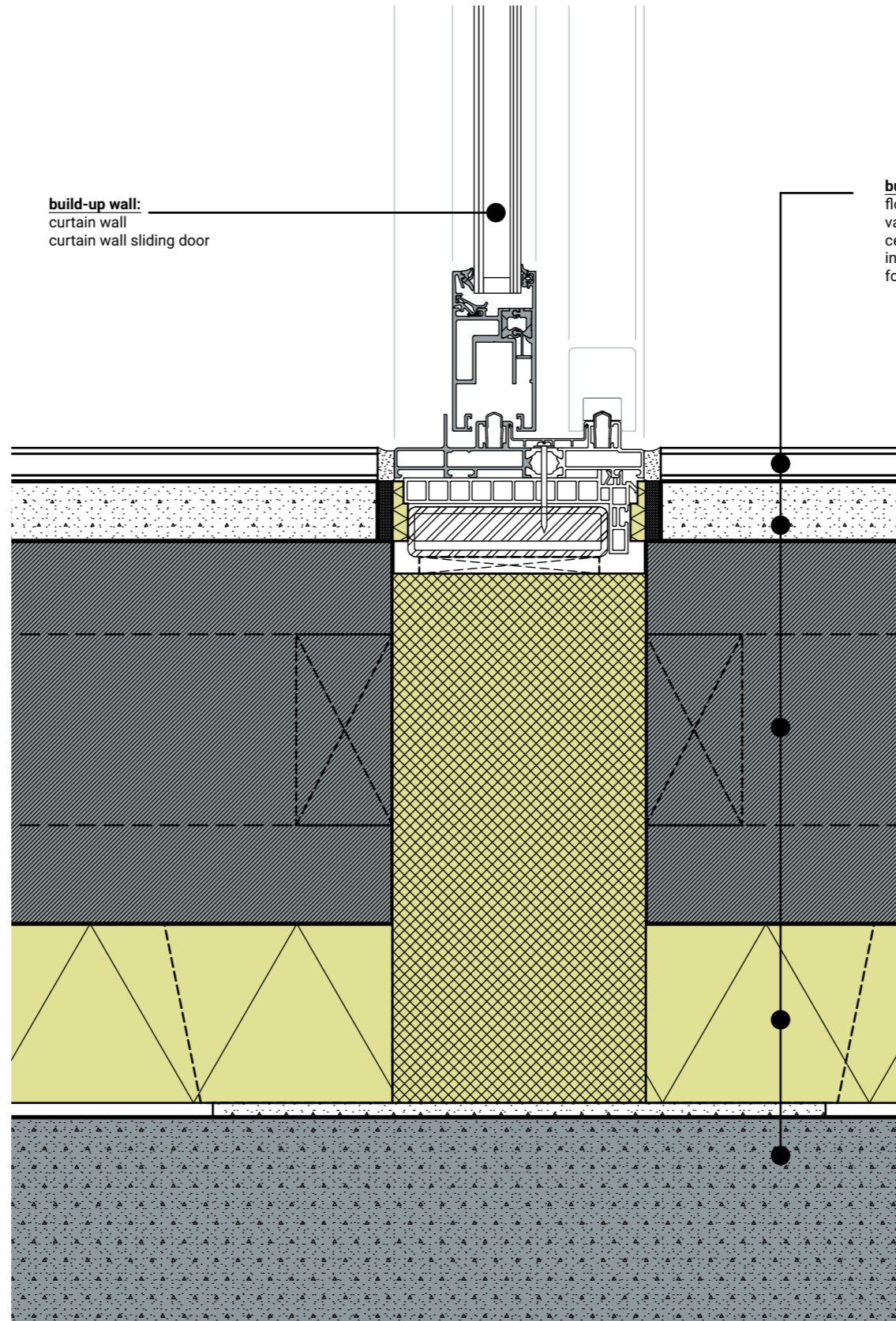
**build-up wall:**  
 curtain wall  
 curtain wall sliding door  
 curtain wall structure (column)





**build-up wall:**  
curtain wall  
curtain wall sliding door

**build-up ground floor**  
floor finish  
variotherm underfloor heating and cooling  
cement screeds (in situ)  
insulated hollow core slab floor  
foundation (pile)





**build-up roof:**  
curtain wall Louvre panels  
curtain wall glazing  
(both 1° degree slope)

▼ +18.875

▼ +18.844

▼ +18.356

**build-up wall:**  
curtain wall  
curtain wall sliding door  
curtain wall structure IPE300

