

Exhibition

Office

Classroom 1



Archive 1

Architectural floor plan of the Archive 1 room, showing a central staircase, a desk area, and several vertical storage units along the walls.

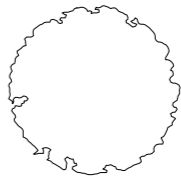
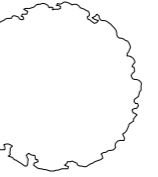
Roof Terrace

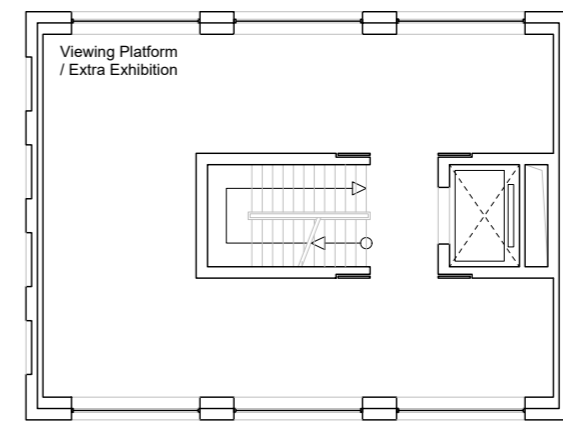
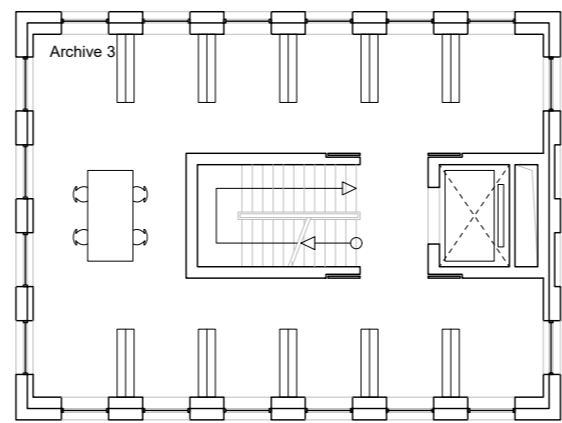
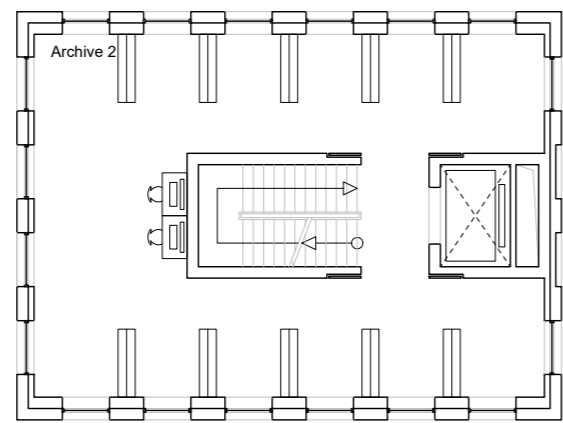
Label for the large open area between the Archive 1 and Library rooms.

Library

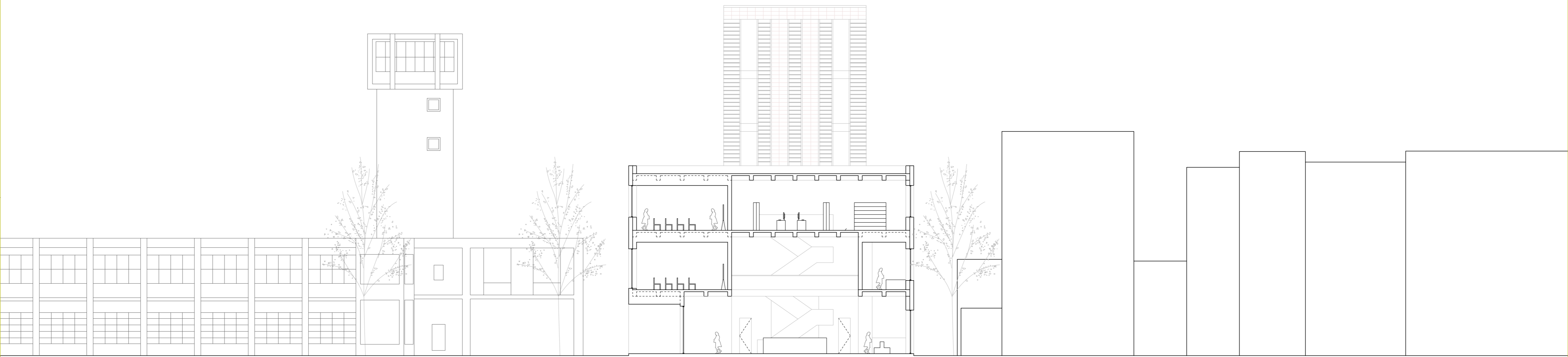
Classroom 2

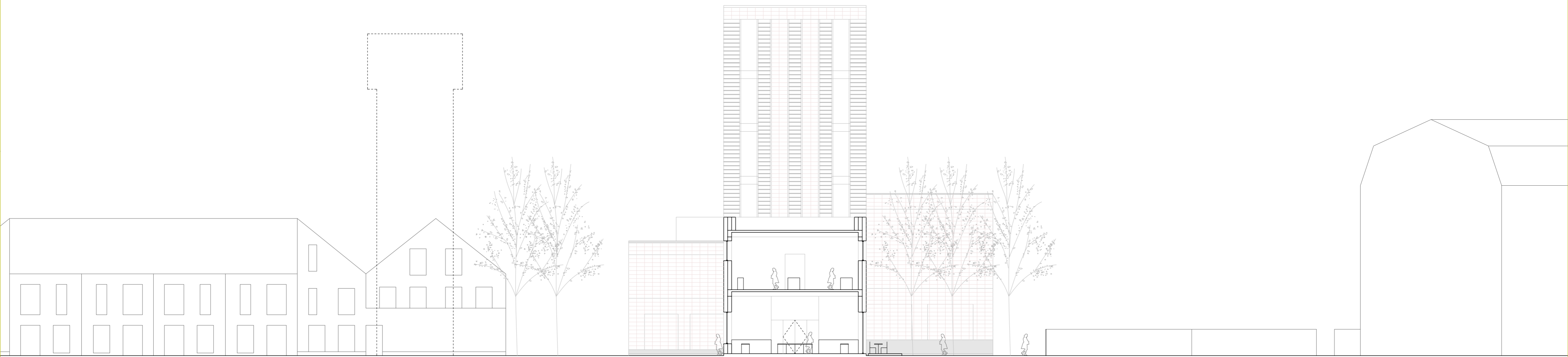
Architectural floor plan of the Library and Classroom 2. The Library contains bookshelves and a reading area. Classroom 2 is furnished with a grid of desks. A staircase is located between the two rooms.

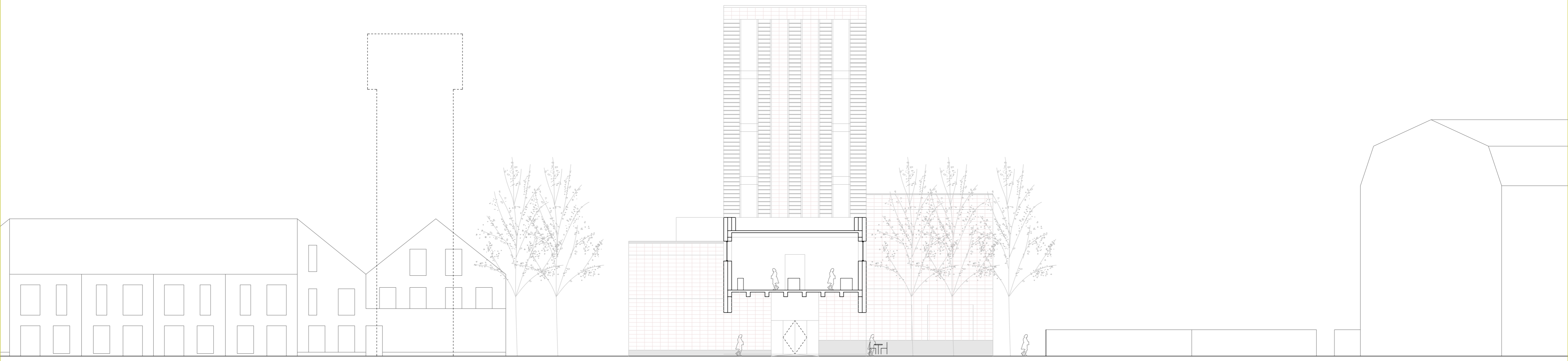


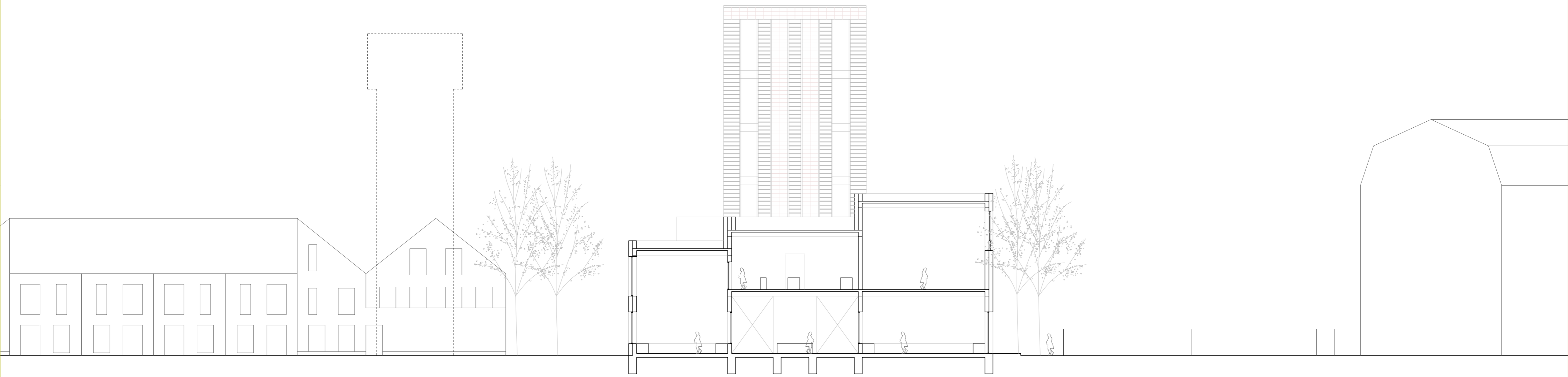


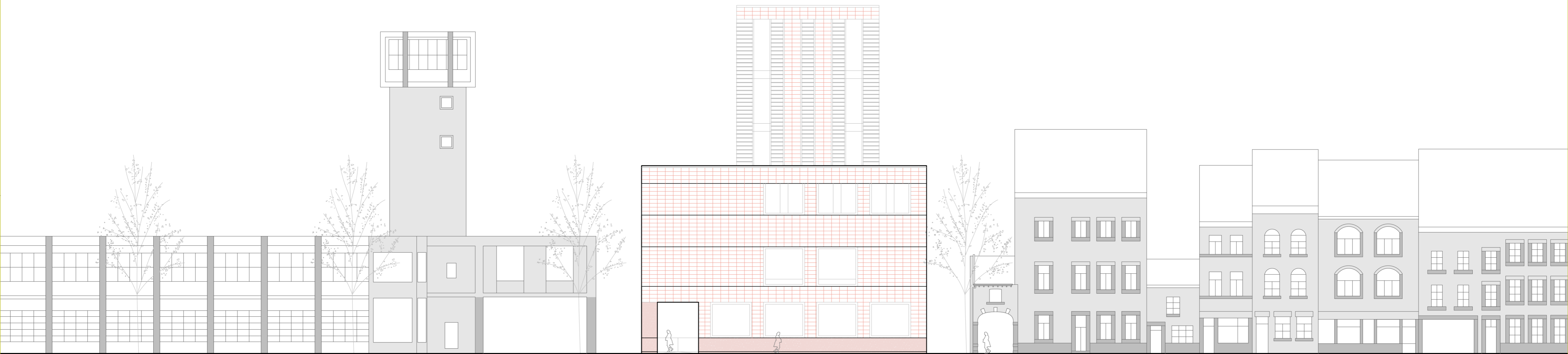


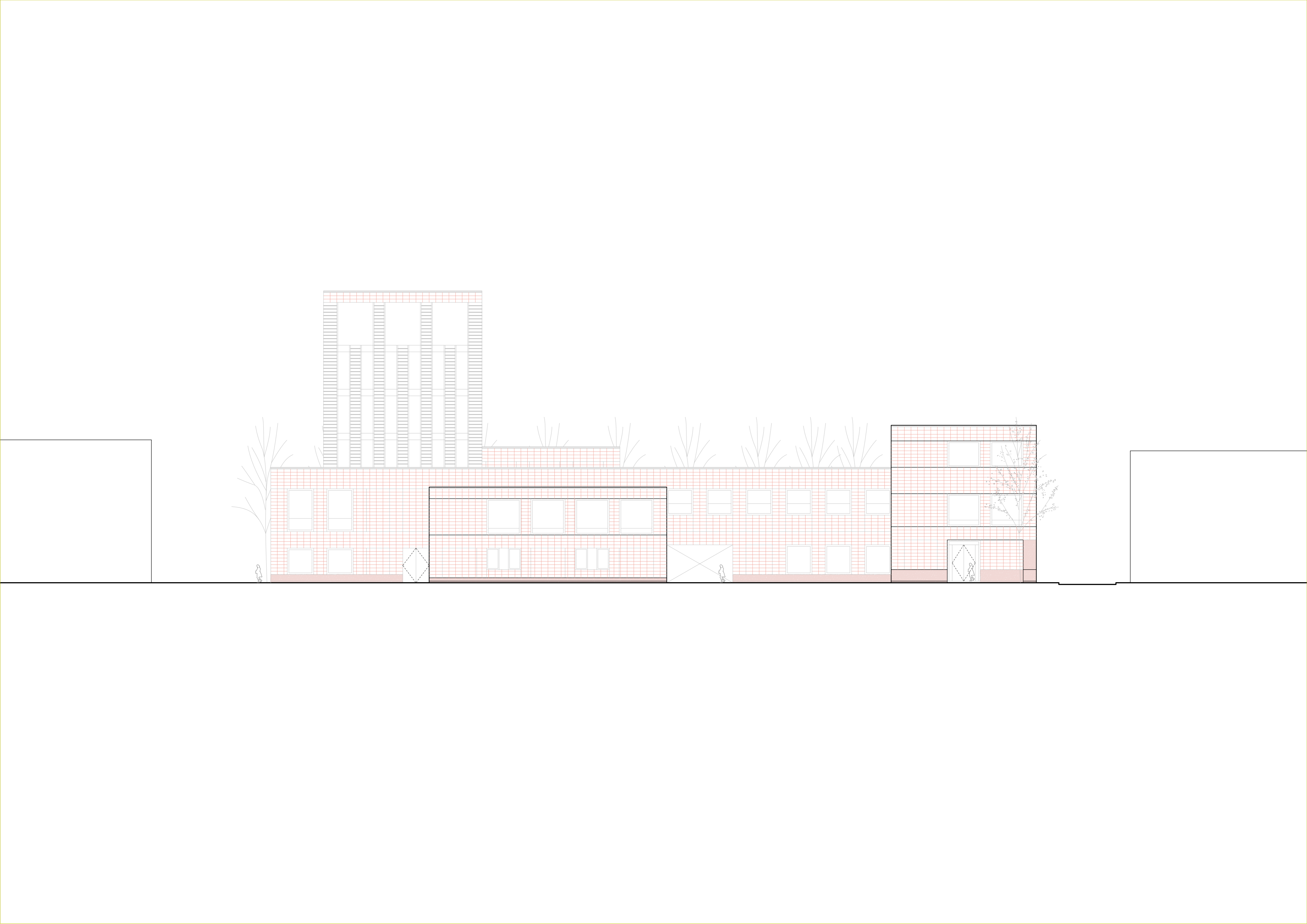


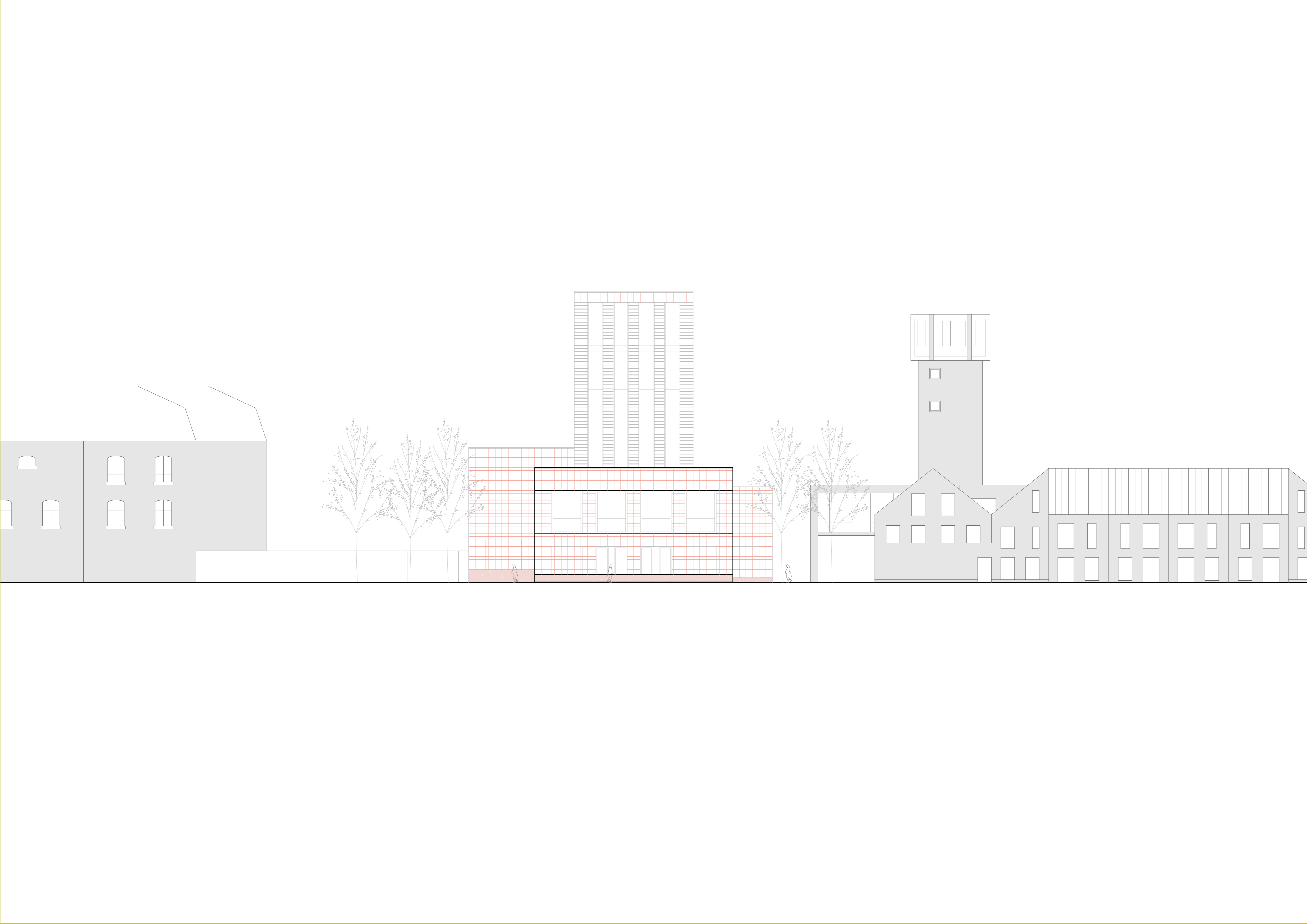


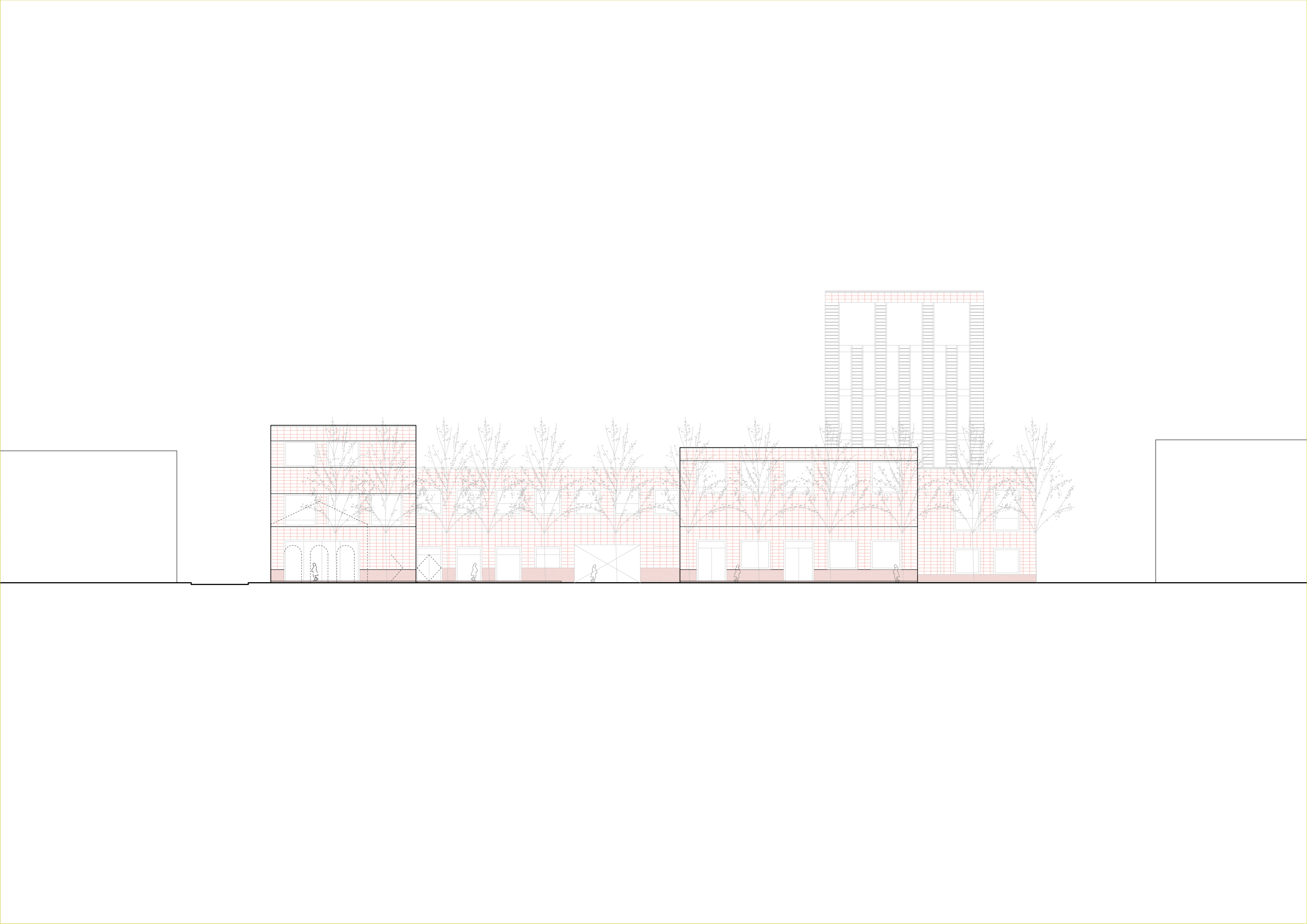


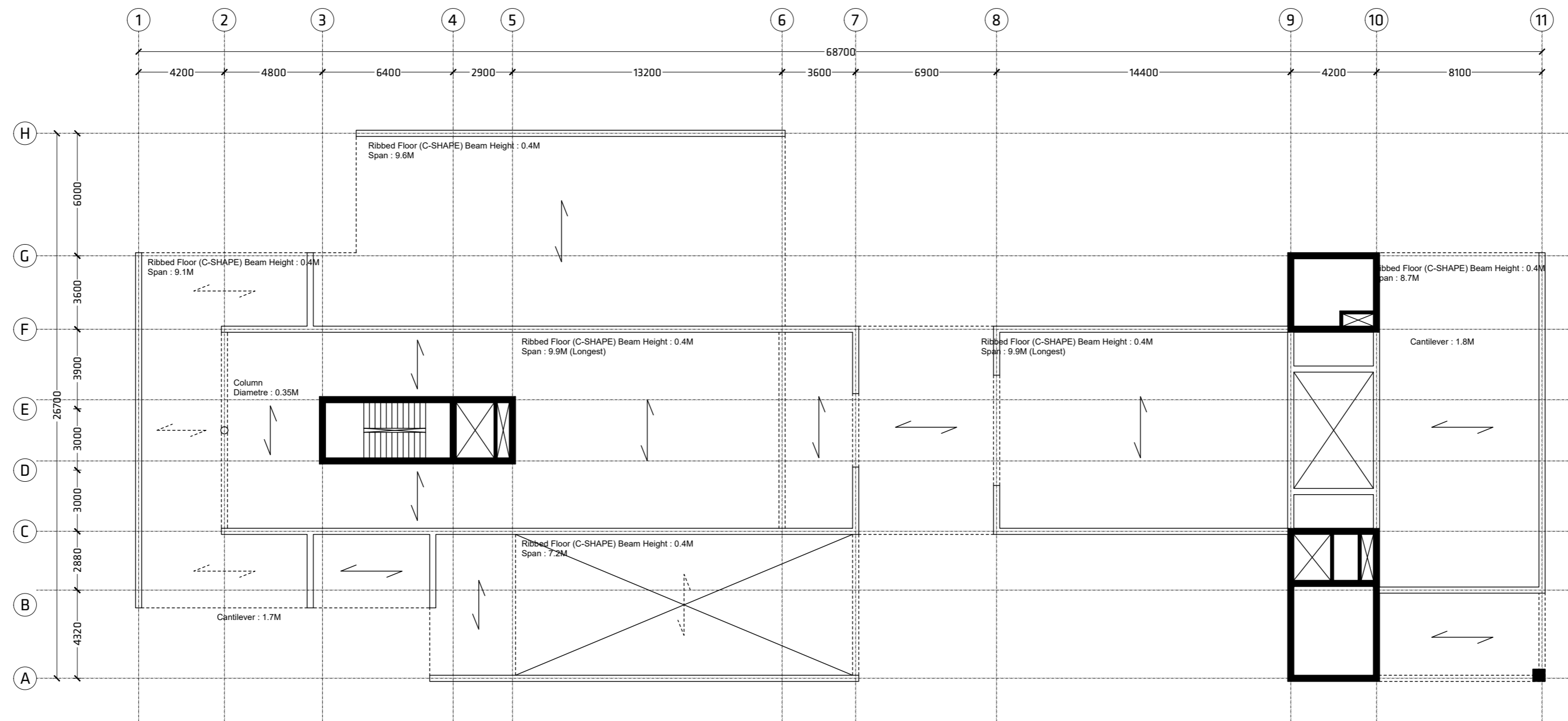


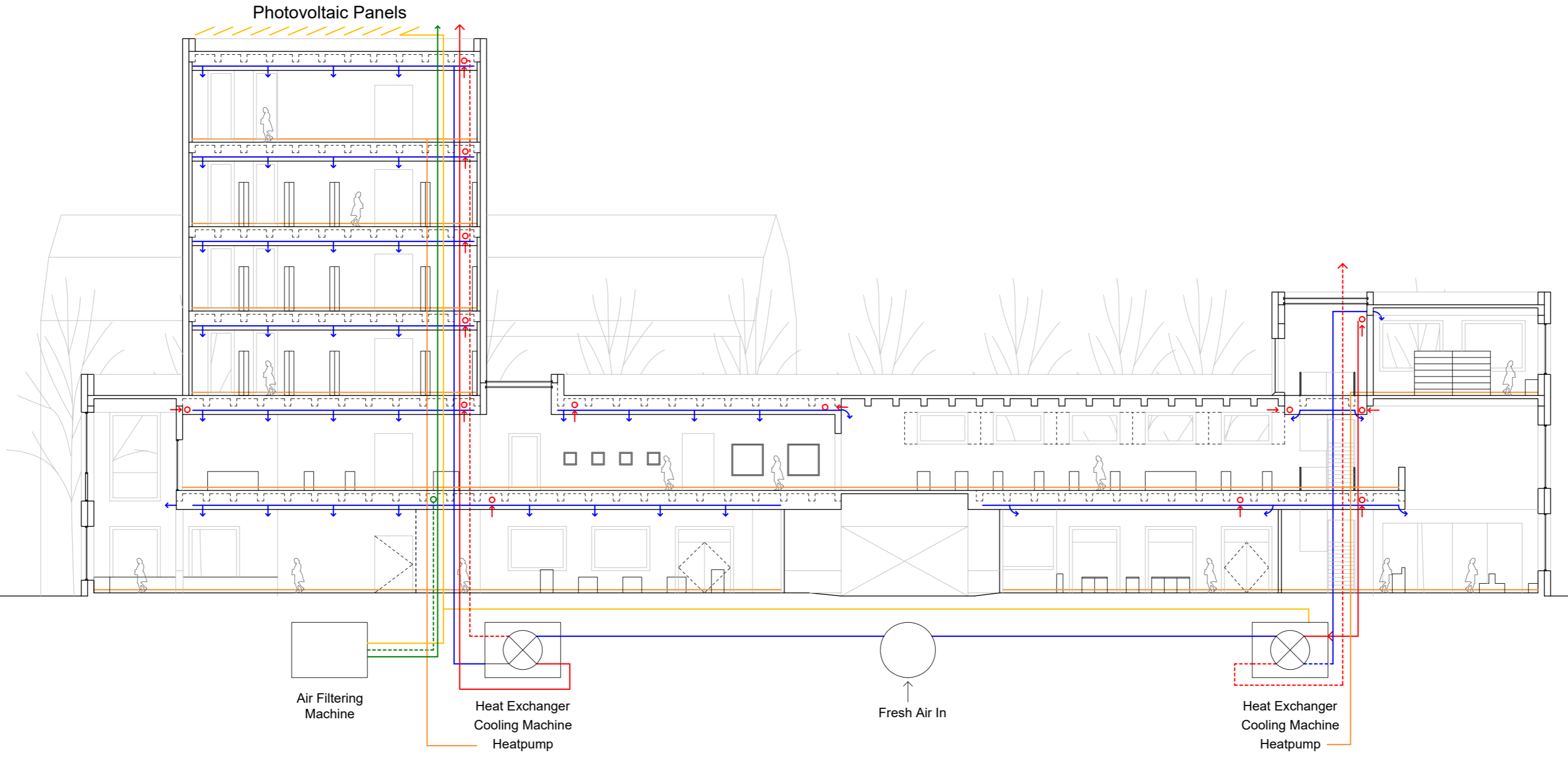


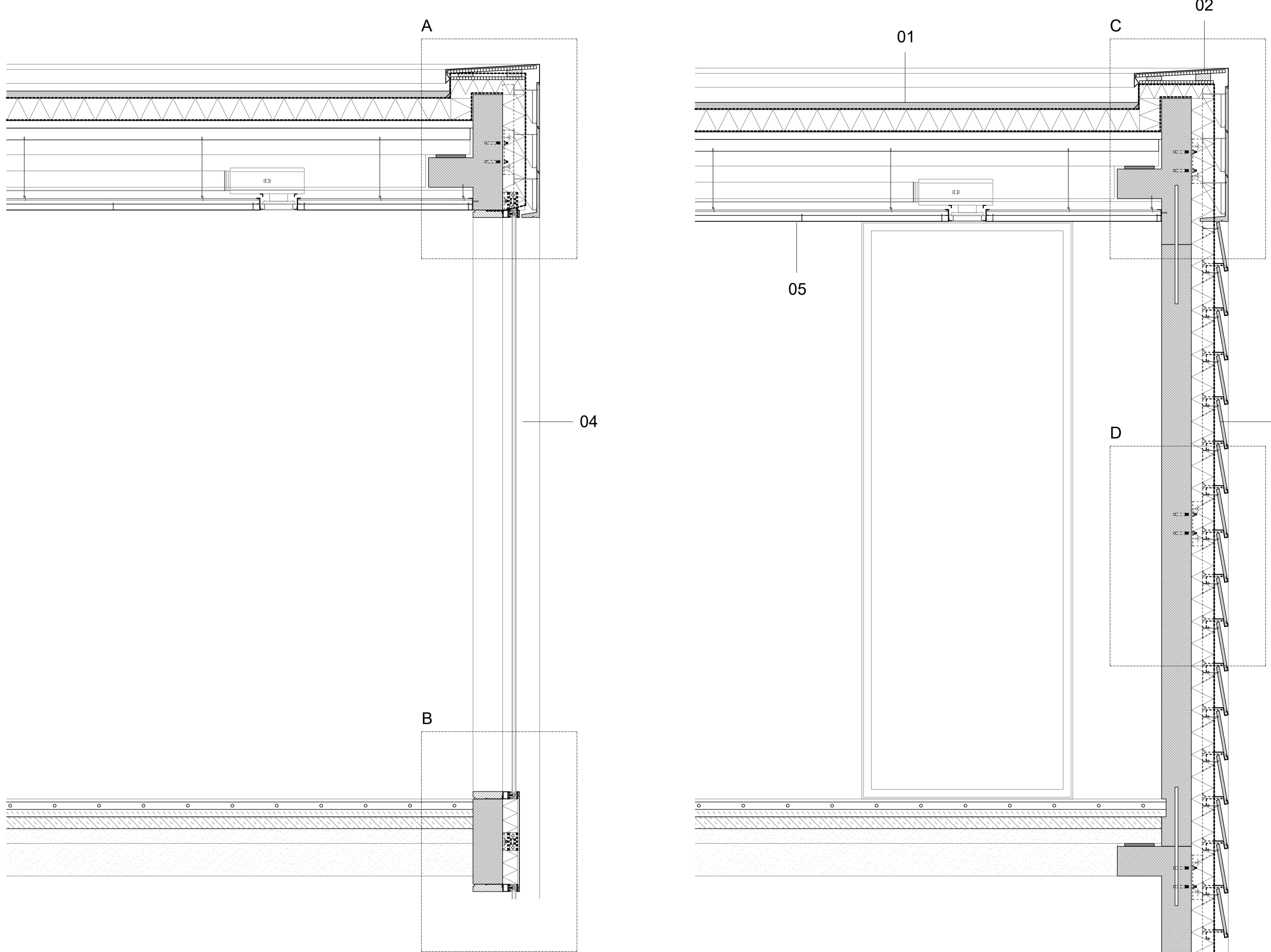












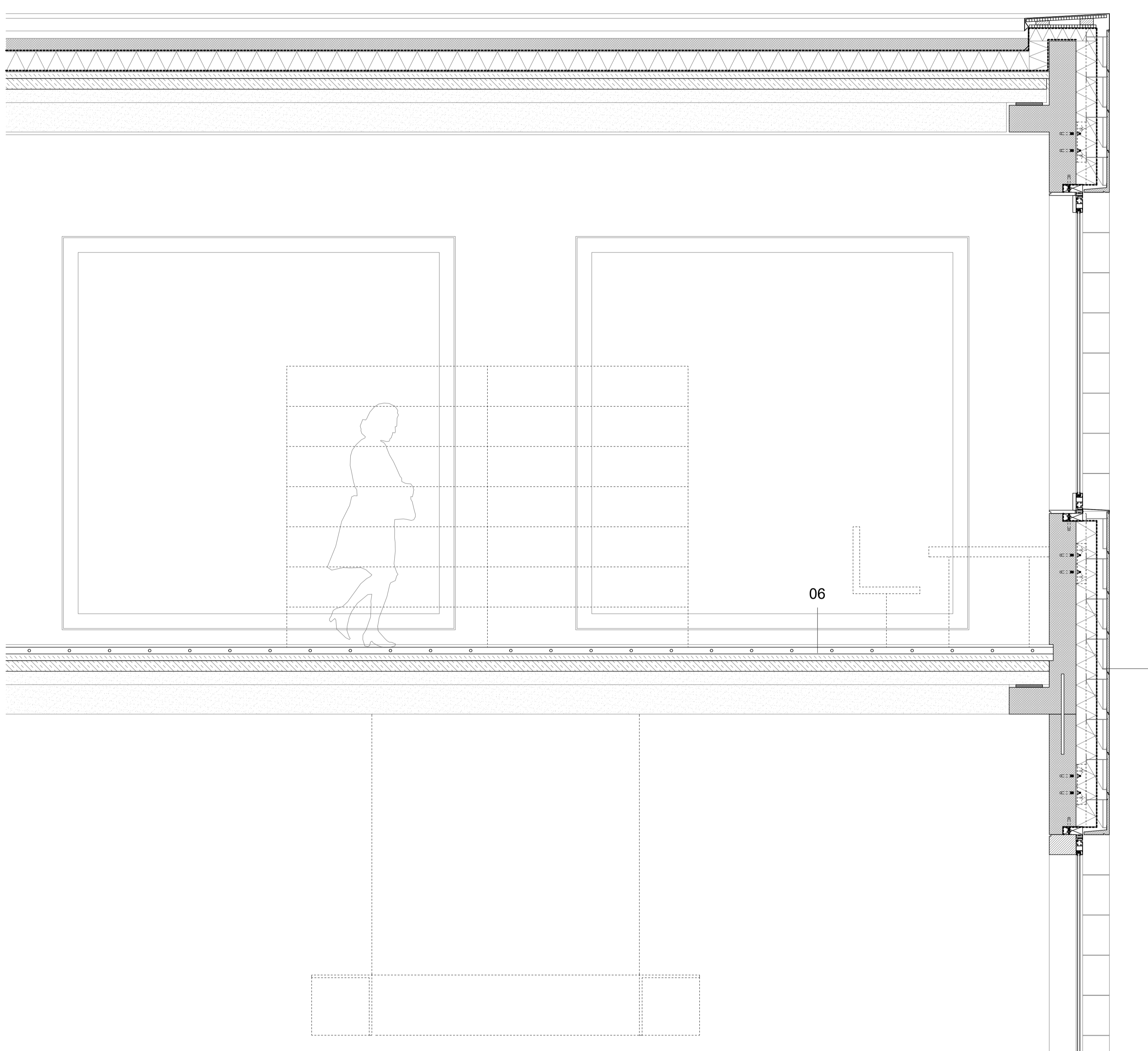
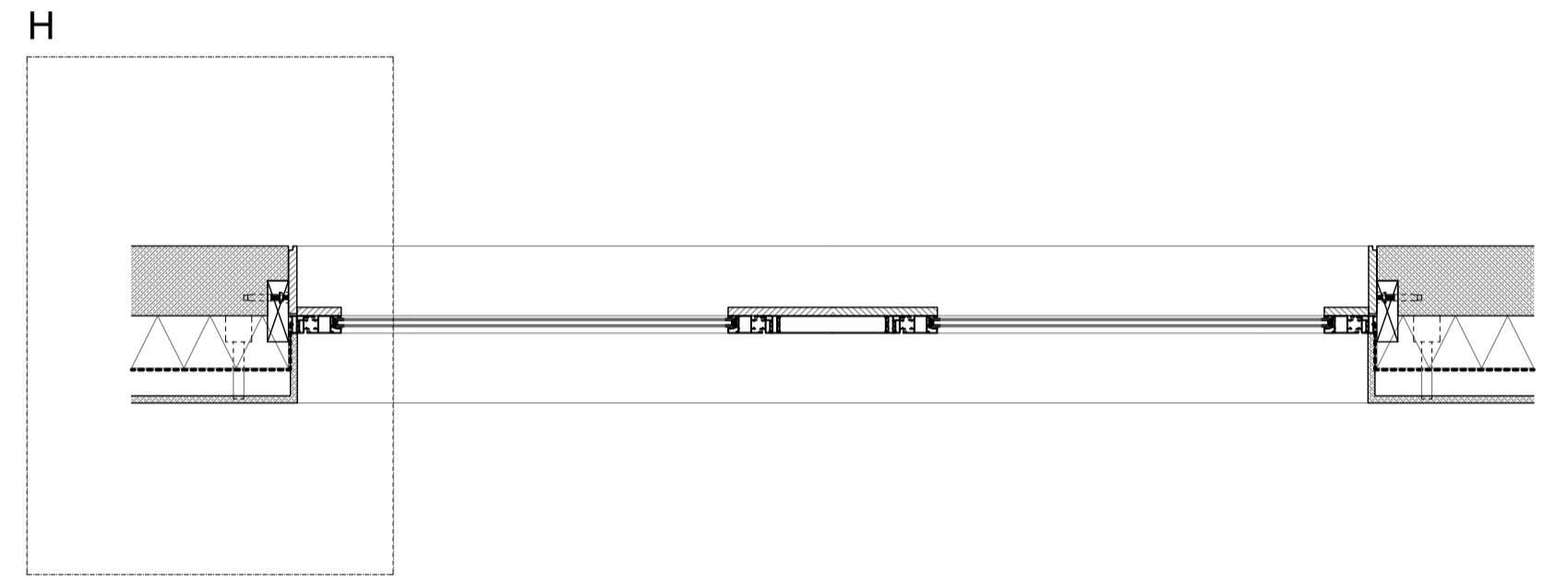
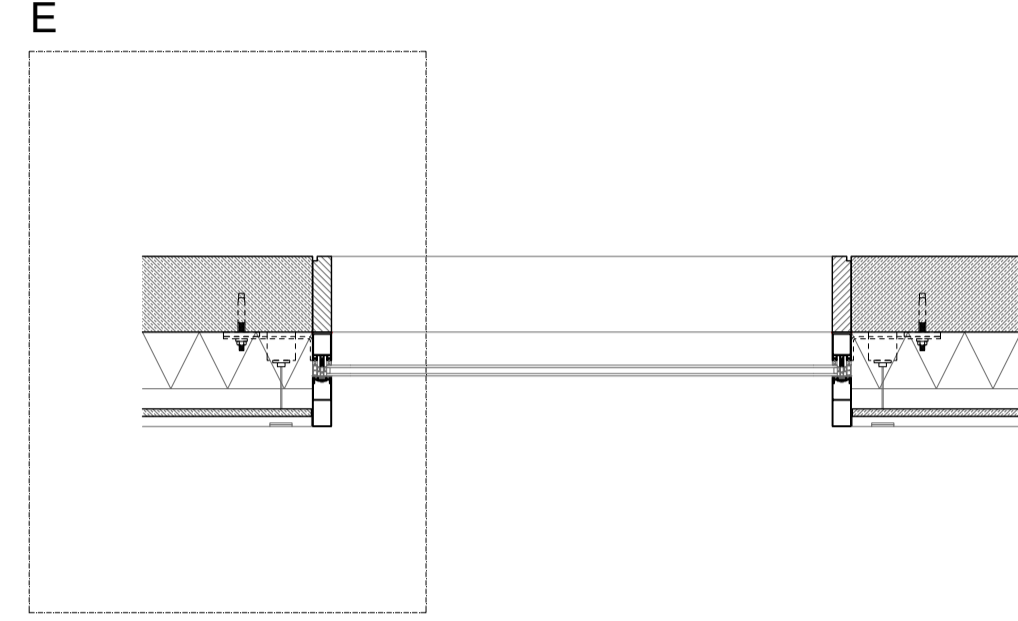
01. Roof Construction (Tower and Base Building)
 - Screed Laid to falls
 - Membrane Waterproofing
 - 150mm Thermal Insulation
 - 50mm Structural Joint Concrete
 - Pre-fabricated Ribbed Floor Construction 400mm

02. Grey Powder-Coated Aluminium Capping (Tower and Base Building)

03. Wall Construction (Tower)
 - 200mm Pre-fabricated Concrete Load-bearing Wall
 - 150mm Rigid Insulation
 - Membrane Waterproofing
 - 50mm Ventilated Cavity
 - 20MM Pre-fabricated Red Abrasive Blasted Concrete Cladding Panel with Customized Alloy Metal Fixtures (Brass colour Coated)
 - Netting with expanded Mesh

04 Curtain Wall Construction (Tower)
 - Structural Curtain Wall Mullion 50x130 (Schueco)
 - 50 x 135 Curtain wall Cover

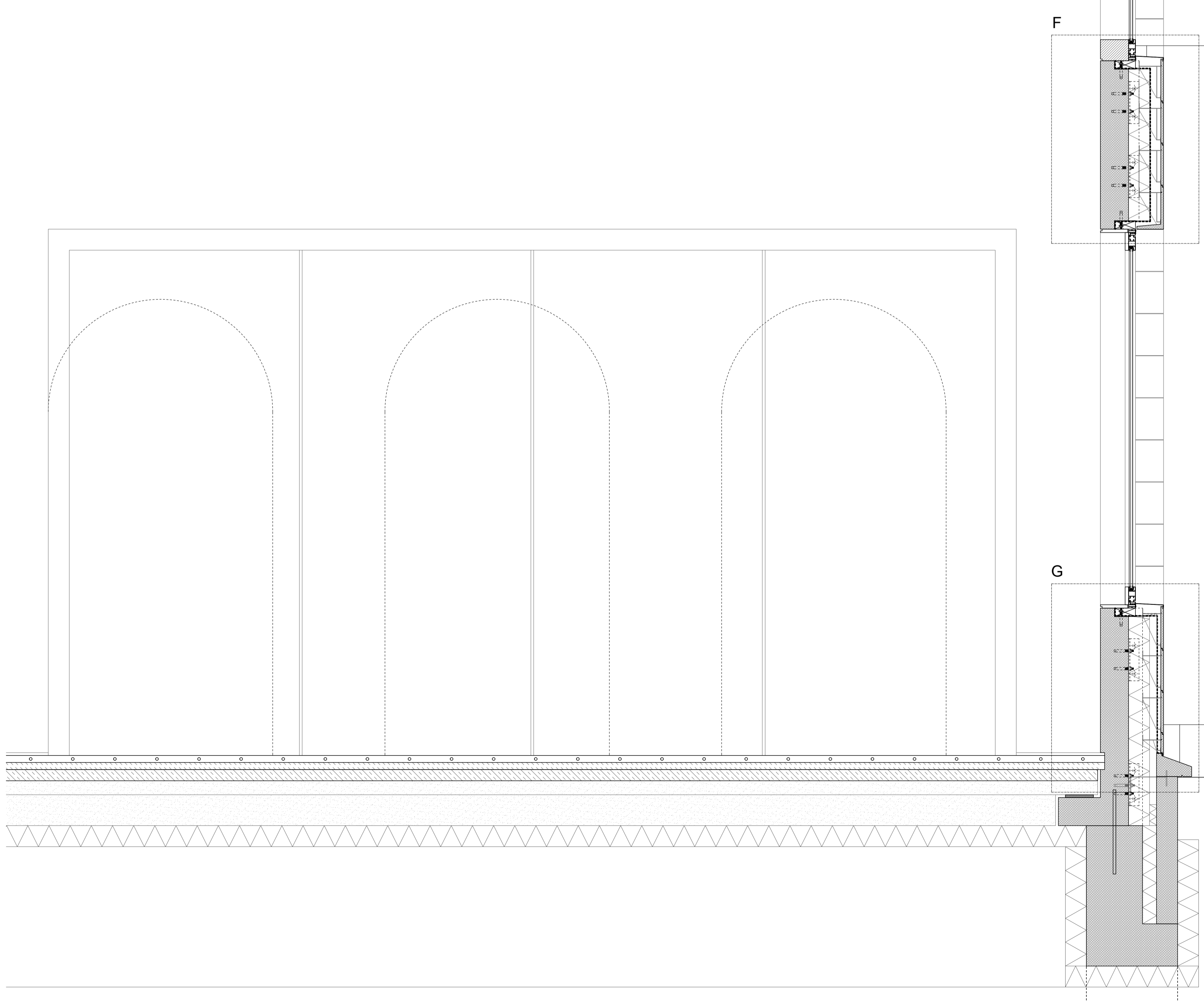
05 Ventilation unit + Ceiling Construction
 - Held by Stainless Steel Hangers
 - Acoustic Ceiling Panels, 50mm
 - 6mm dia. Rigid Hanger rods
 - Anchored to Ribbed Floor Concrete Slab



06. Floor Construction (Base Building)
 - 50mm Under-floor Heating Concrete Floor (Polished)
 - 50mm Structural Floor Joint Concrete
 - Pre-fabricated Ribbed Floor Construction 400mm
 - Lighting Point to be integrated to Ribbed floor Construction

07. Wall Construction (Base Building 1-2 Floor)
 - 200mm Pre-fabricated Concrete Load-bearing Wall
 - 150mm Rigid Insulation
 - Membrane Waterproofing
 - 50mm Ventilated Cavity
 - 20MM Pre-fabricated Red Abrasive Blasted Concrete Cladding Panel

08. Aluminium Frame Window (Fixed)
 - Double Glazing: 6mm Toughened Glass + 12mm Cavity + 6mm lam. safety glass
 - Powder-coated Extruded Aluminium Section Window Flashing



09. Wall Construction (Base Building Ground Floor)
 - 200mm Pre-fabricated Concrete Load-bearing Wall
 - 150mm Rigid Insulation
 - Membrane Waterproofing
 - 50mm Ventilated Cavity
 - 20MM Tocano San Mauro Stone Cladding Panel (Metten)
 - Tocano San Mauro Stone Block (Gritted Finish)

