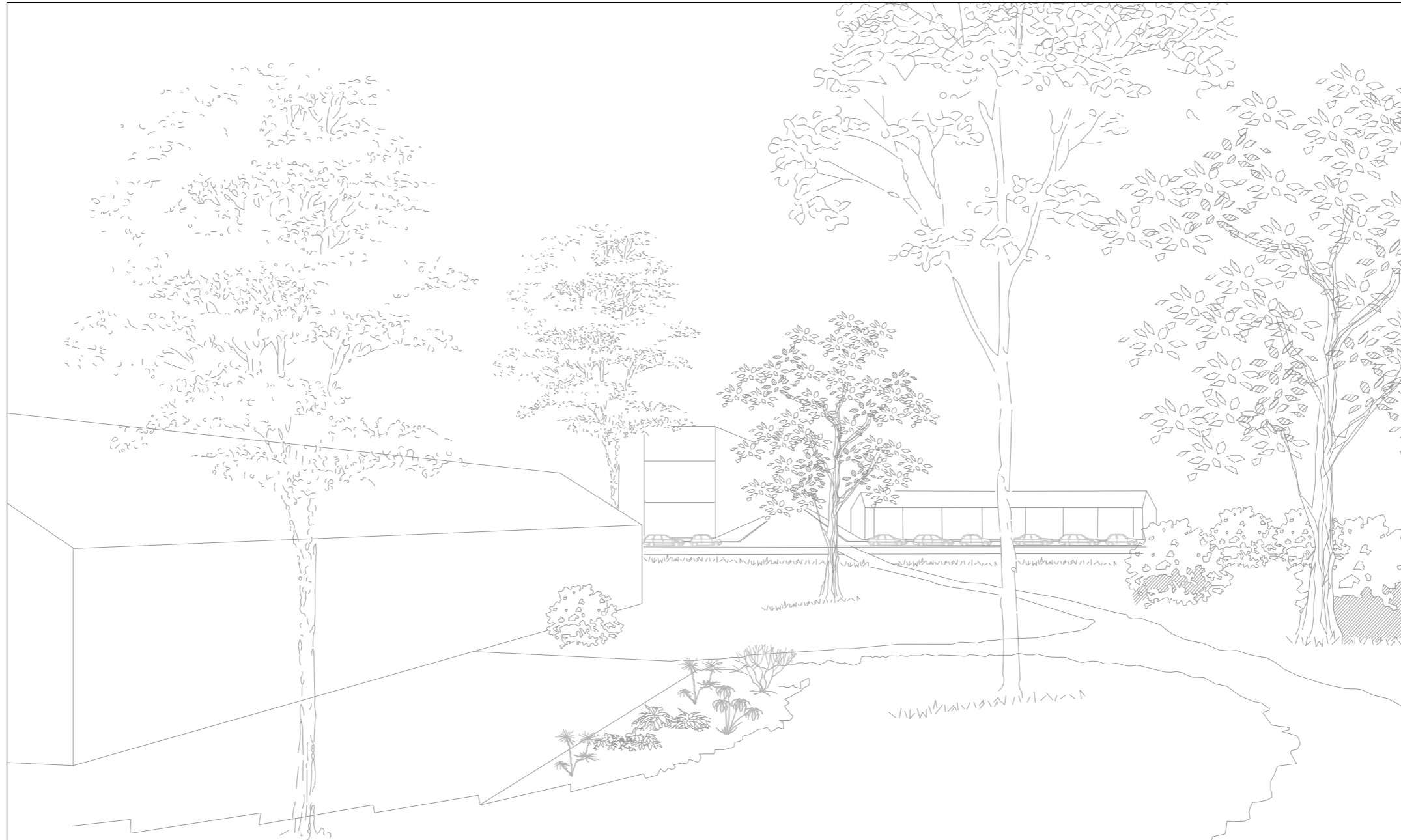
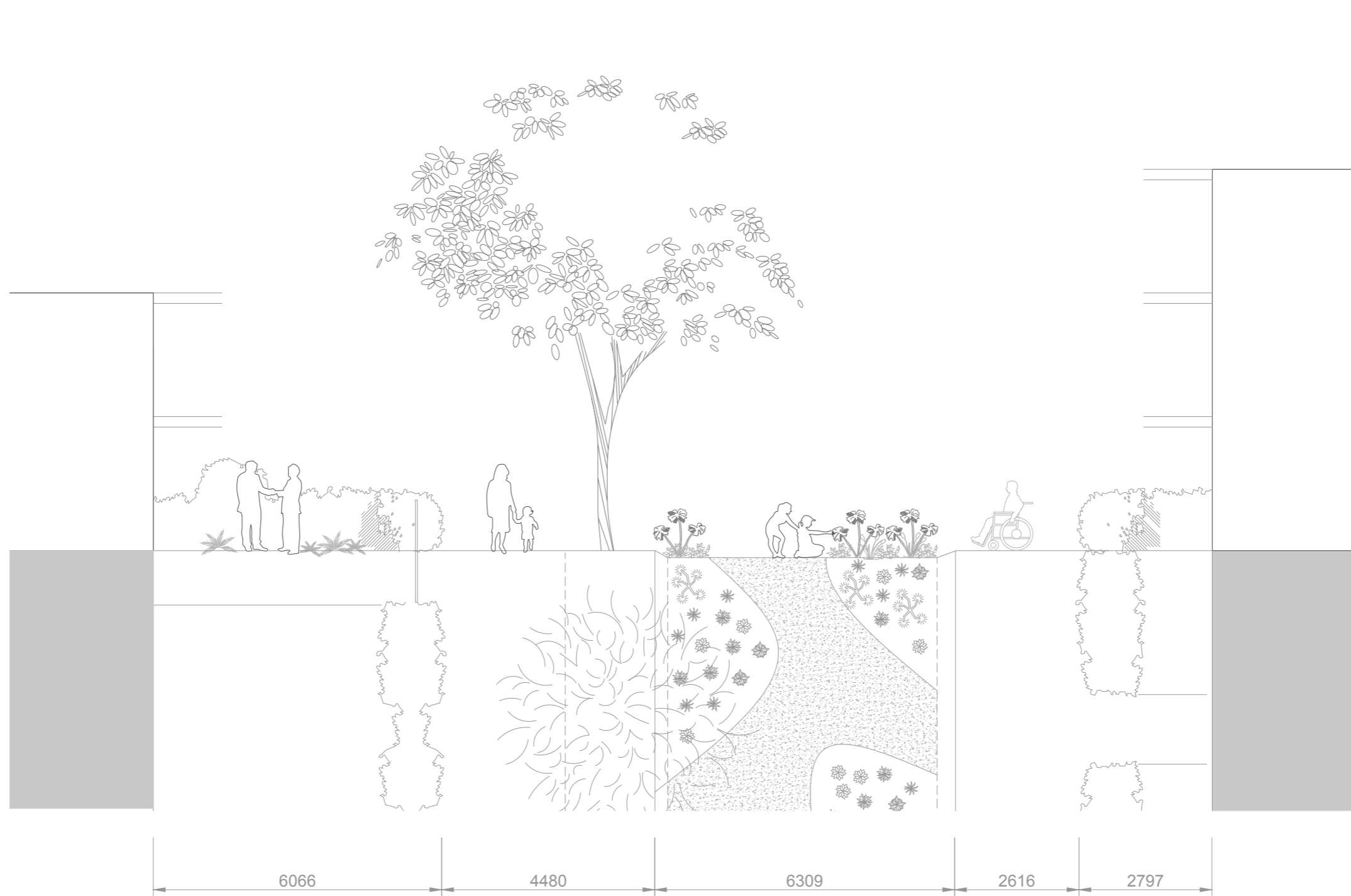


Route



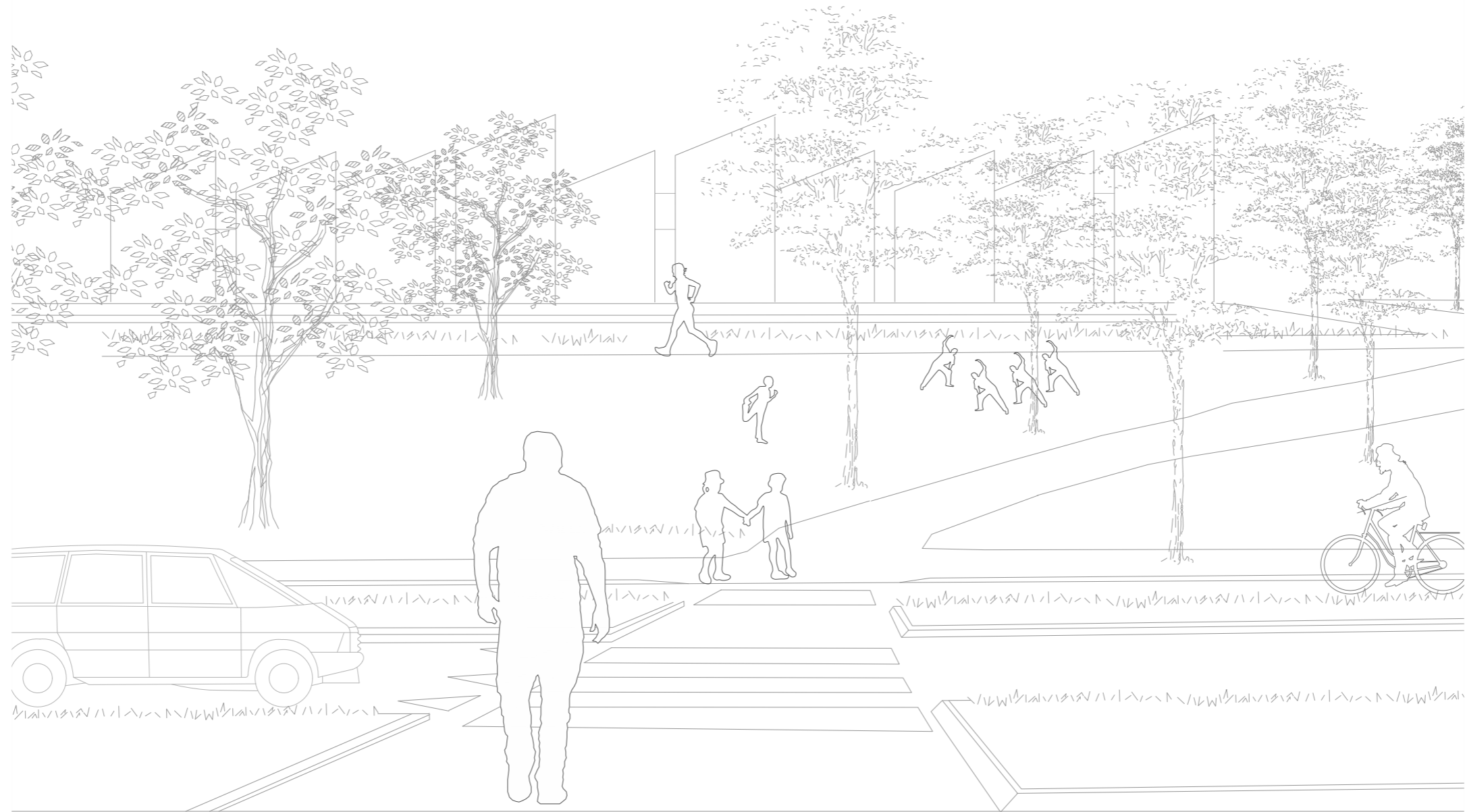
Het buurthuis

Route

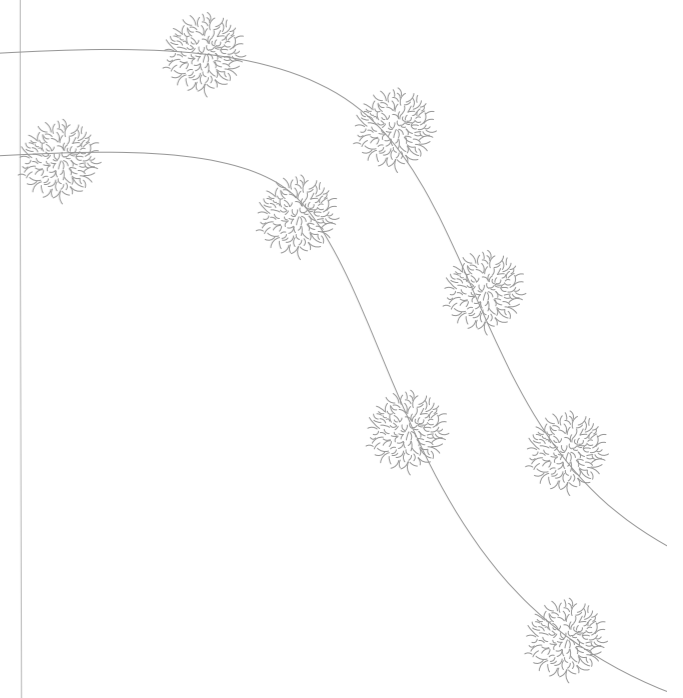
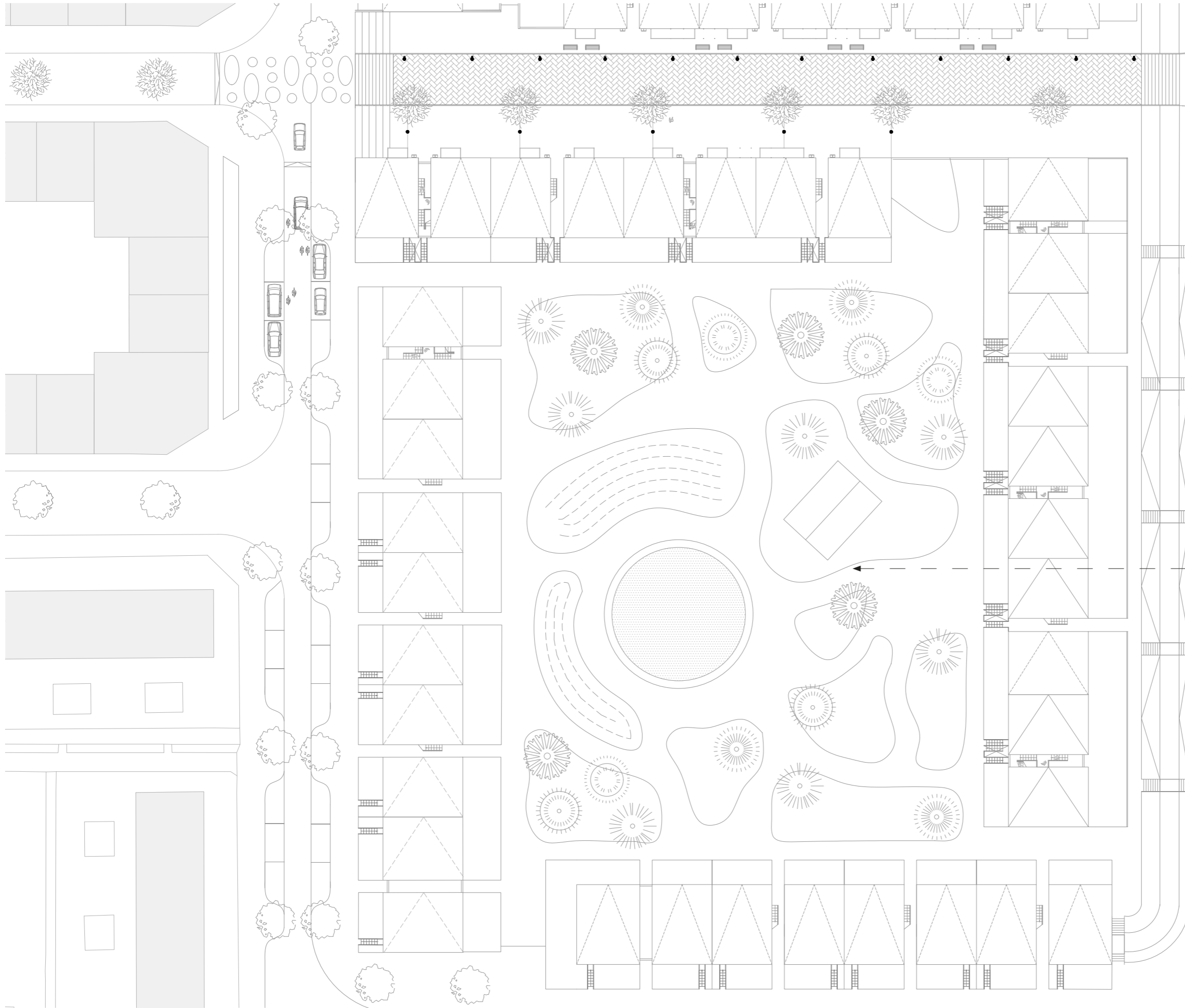


De Lierstraat

Route

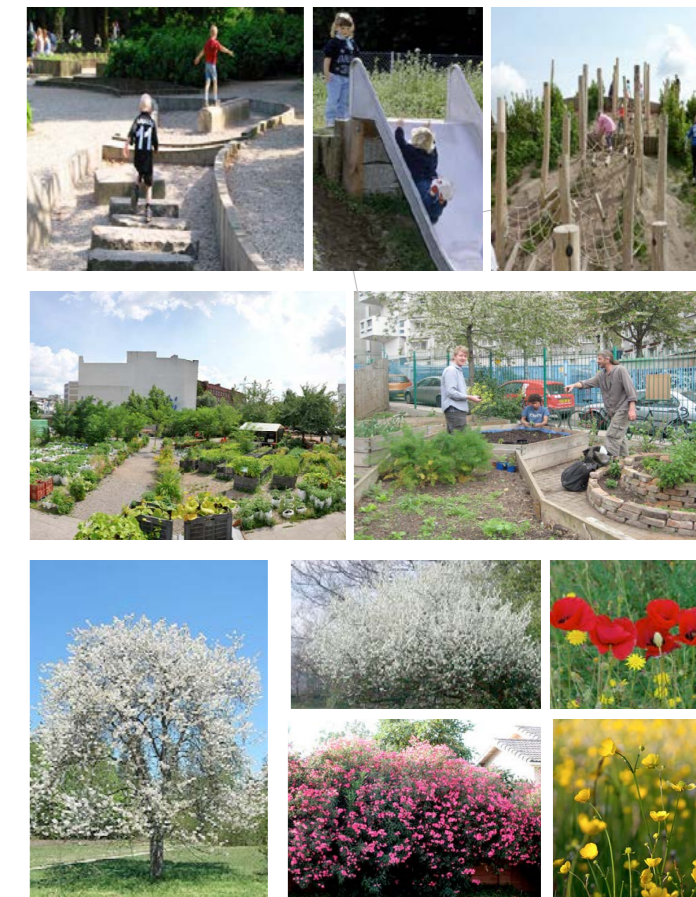


De Oversteek



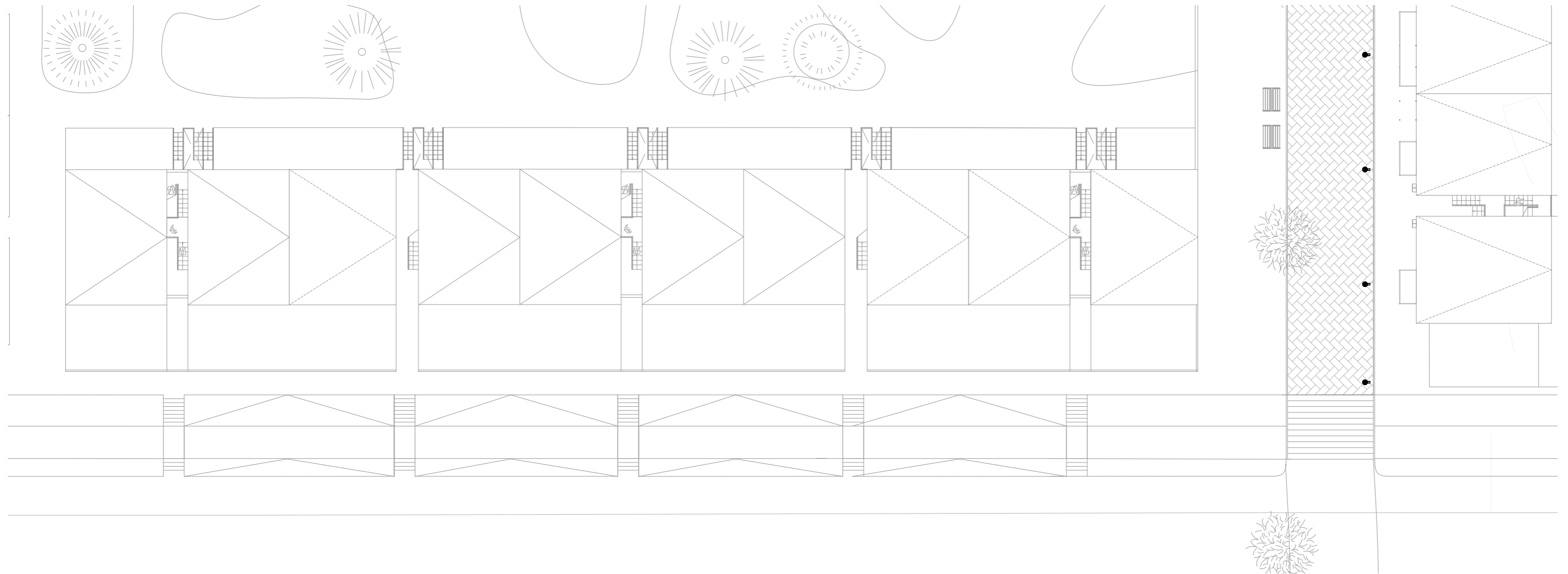
De binnentuin

Buurtbewoners creëren samen met een binnentuin waar gespeeld en getuind kan worden. De tuin is publiekelijk toegankelijk om doorheen te wandelen en te genieten van de verschillende bloemen, bomen en struiken, die insecten bijen en vogels aantrekken.

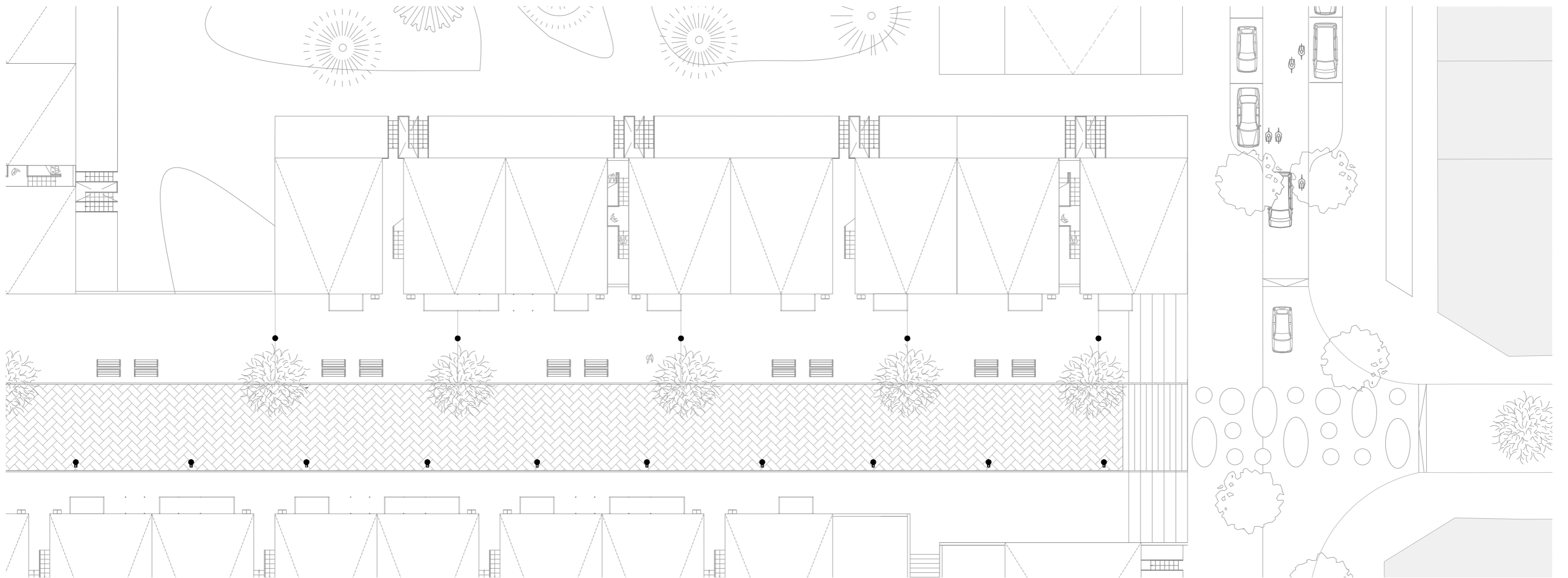


referenties Zeehelden binnentuin Den Haag.

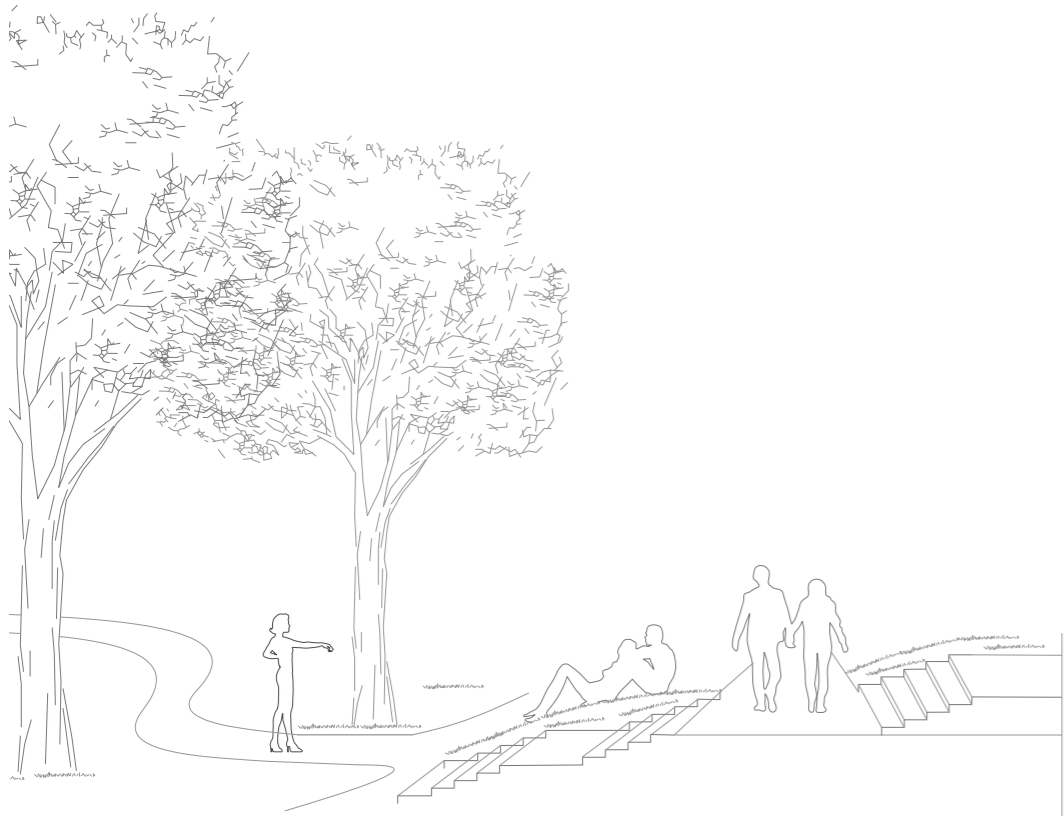
Gevel en park 1:300



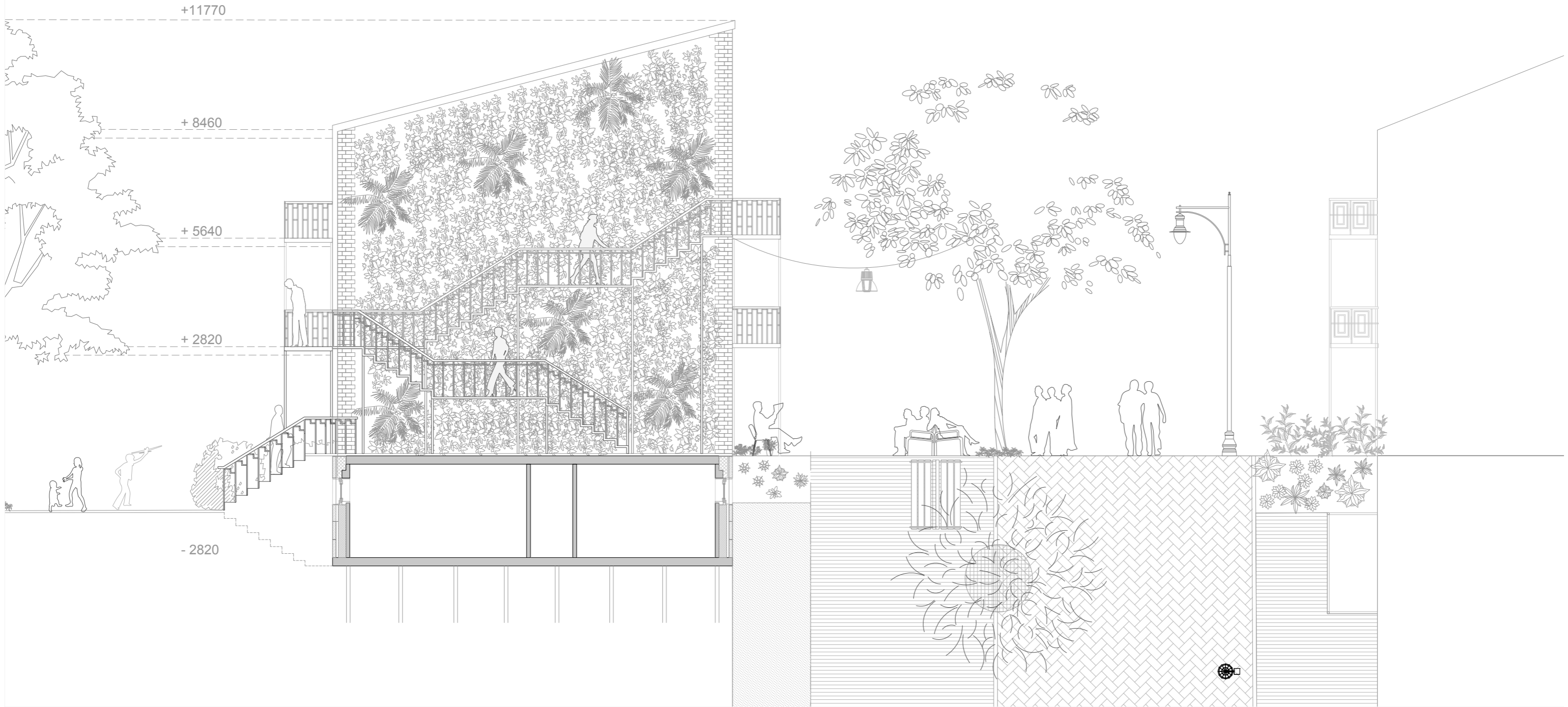
Gevel en straat 1:300



Doorsnede
woningindeling 1:100



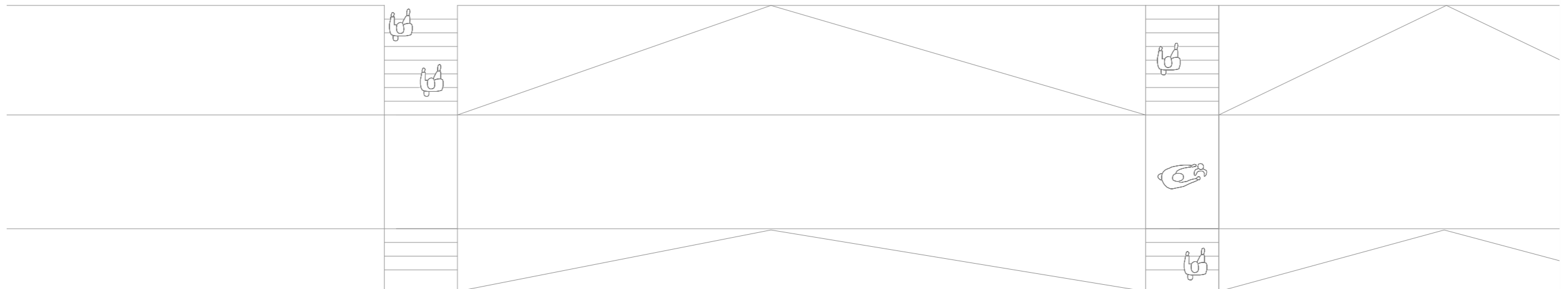
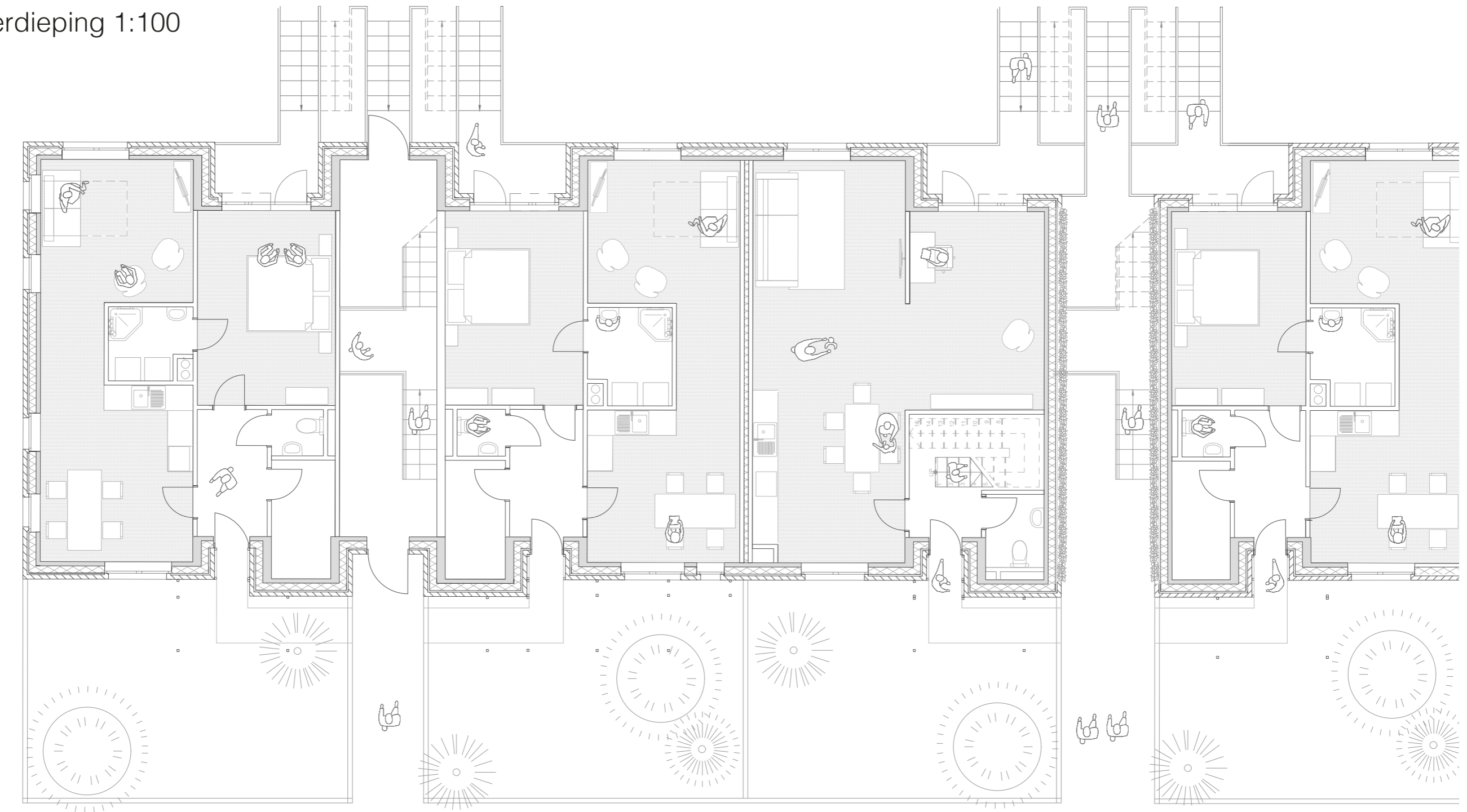
Doorsnede
open portiek 1:100



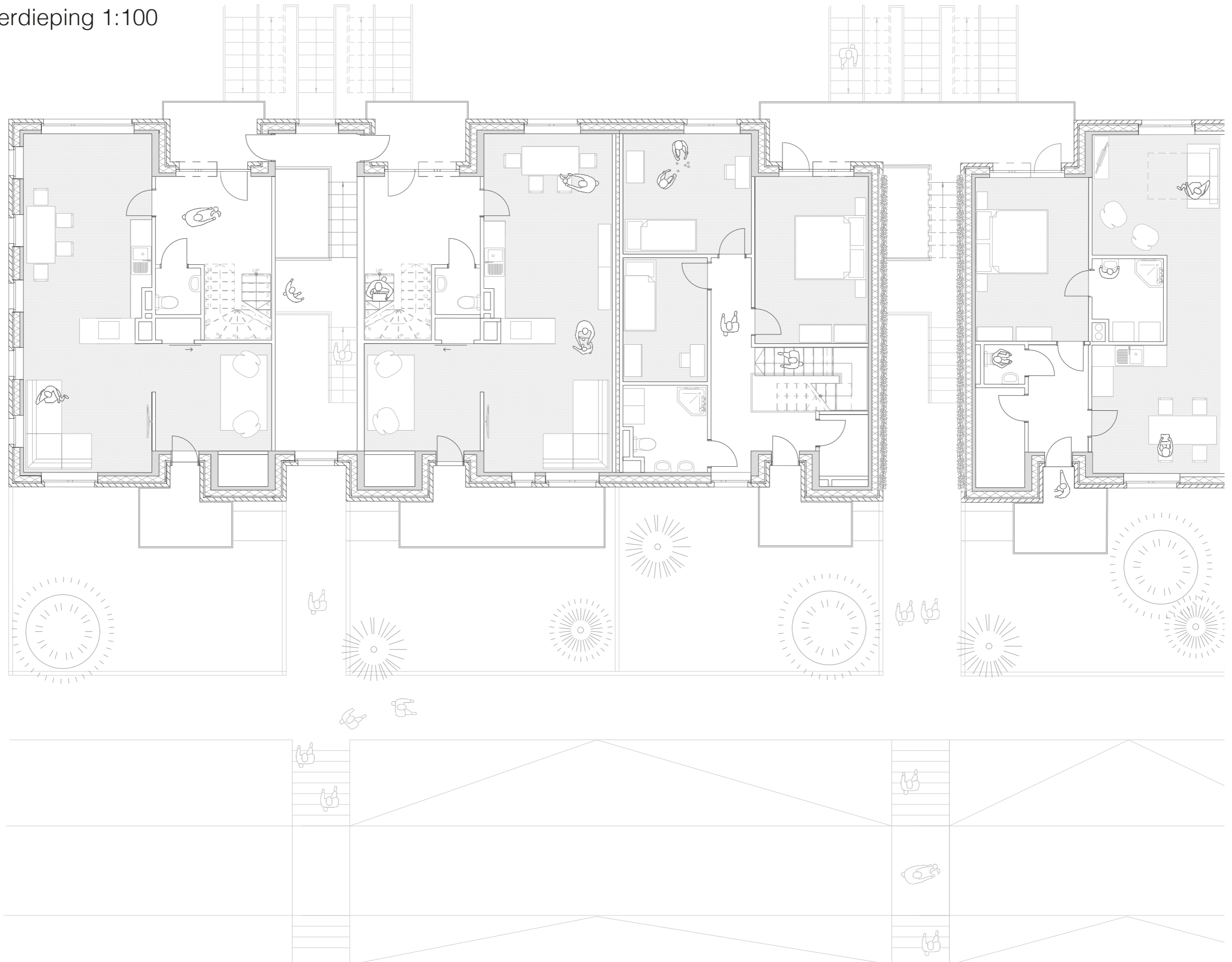
Gevel fragment 1 100



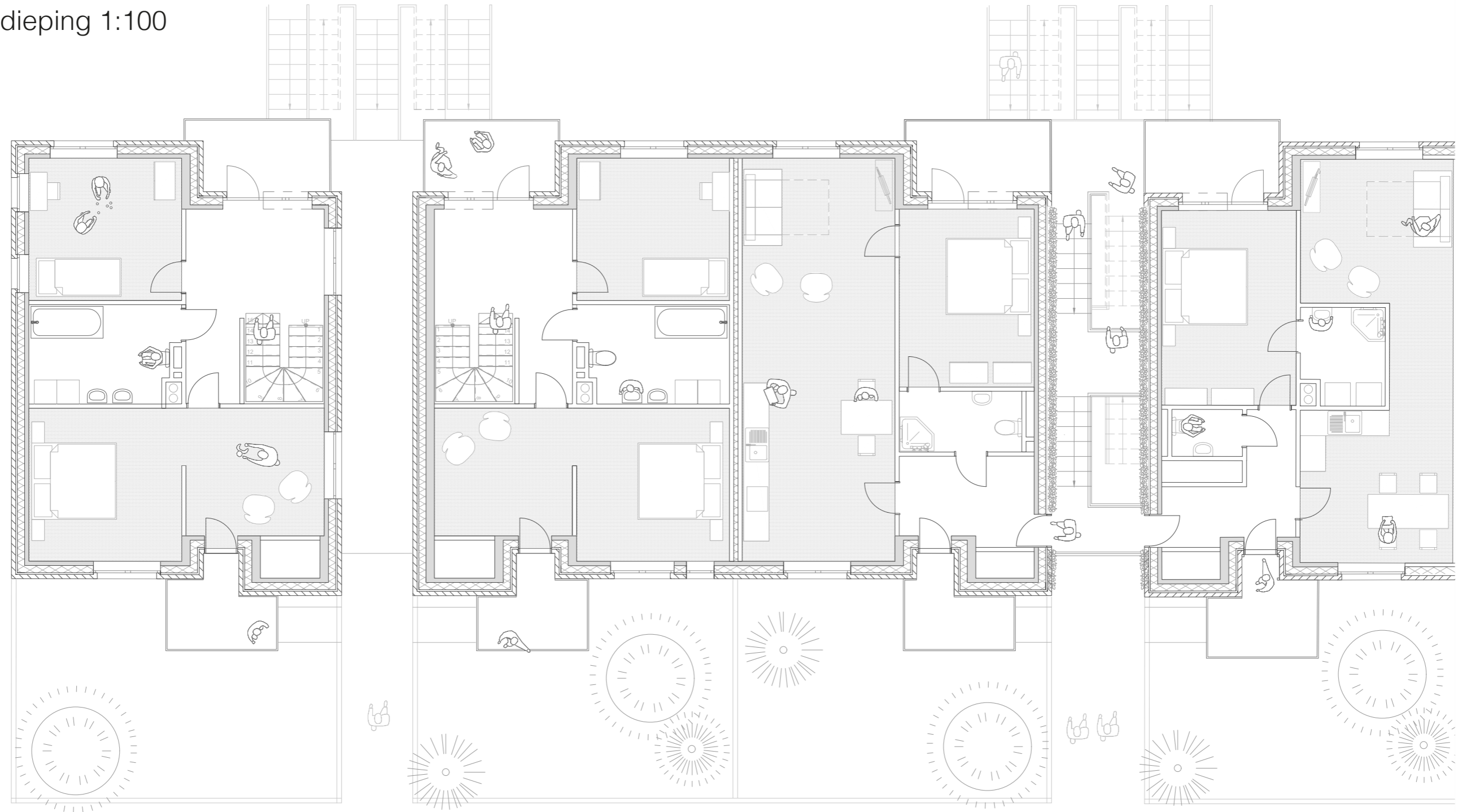
Eerste verdieping 1:100



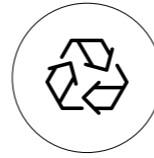
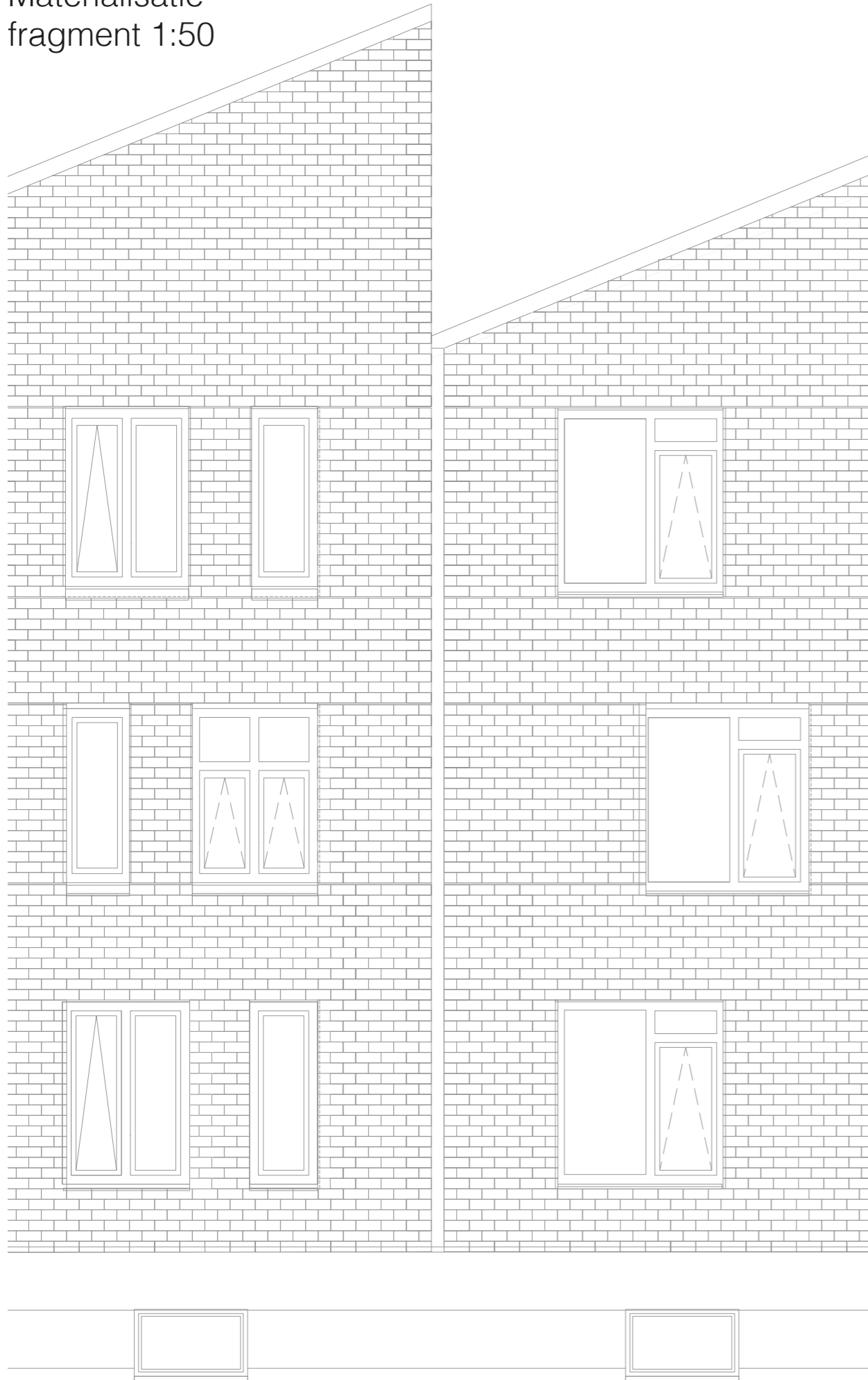
Tweede verdieping 1:100



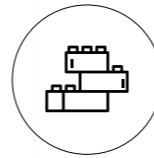
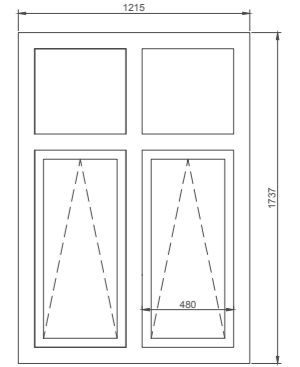
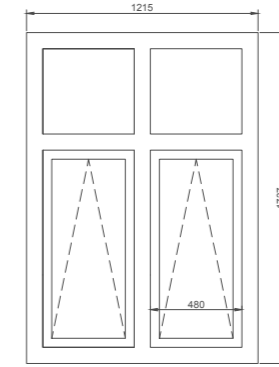
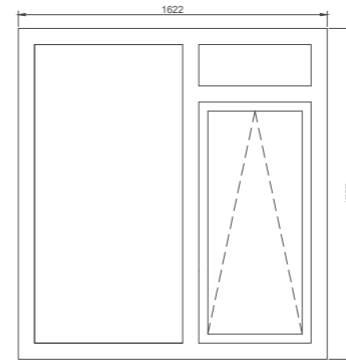
Derde verdieping 1:100



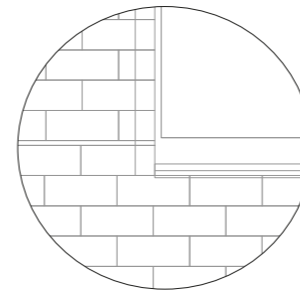
Materialisatie
fragment 1:50



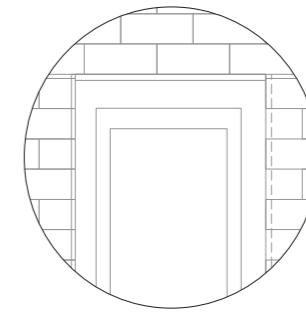
Hergebruikte kozijnen van portiekflats uit de 'krachtwijken' die in de toekomst getransformeerd zullen worden. (*scenario, referentie Superuse*)



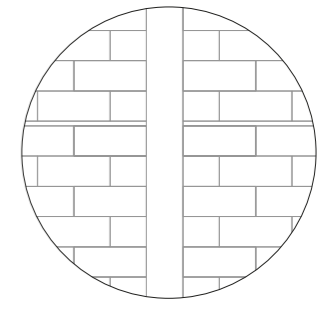
Droogstapelbouw van ClickBricks, die voor een unieke en robuuste uitraling zorgen. De tweede schil kan door deze bouwmethode snel verlopen en is volledig demontabel.



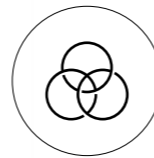
gedeeltelijke overlap met het kozijn



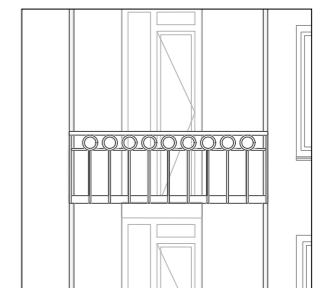
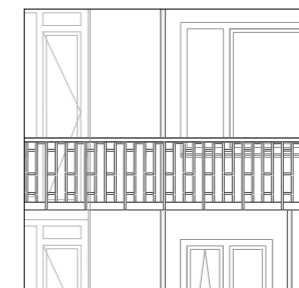
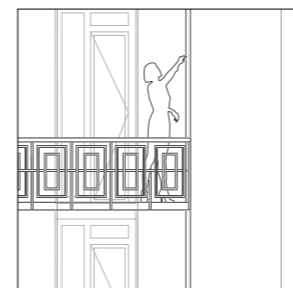
boven het kozijn maatverschillen op vangen



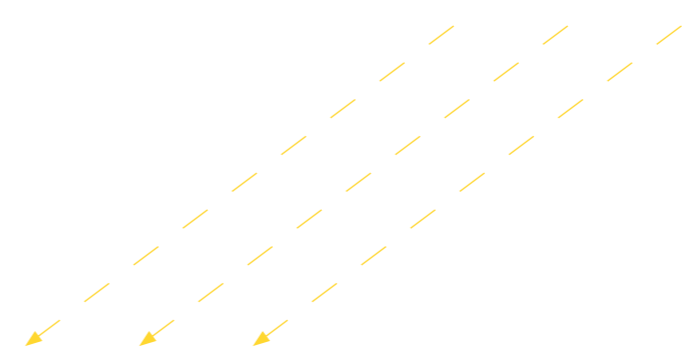
hwa markeert begin en eind van de gevel



Diversiteit door de verschillende gridmaten van balkons, gevelstenen en kozijnen over elkaar heen te leggen. Daarnaast versterkt het balkonontwerp ook de individualiteit van elke portiek.



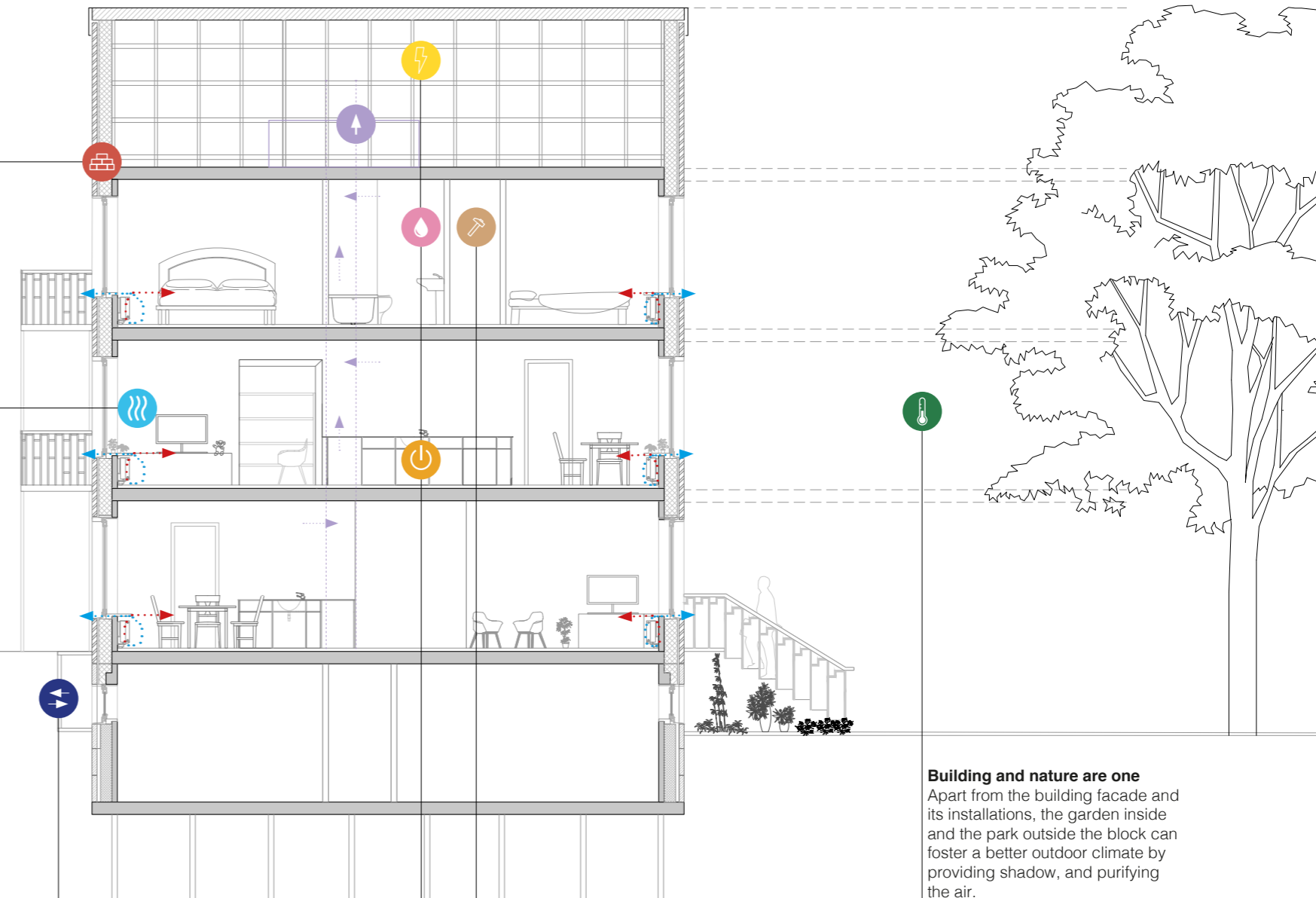
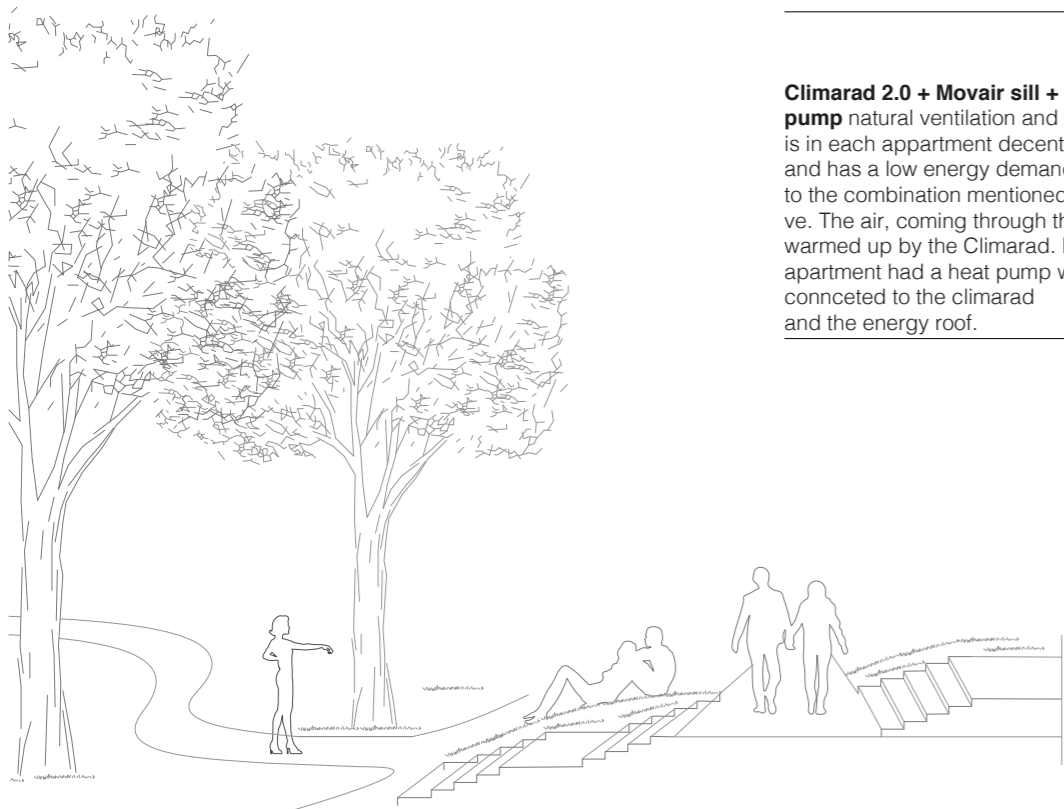
Klimaat concept



ClickBrick facade; easy and quick building process, demountable, colour variety is possible. Low tolerances of the building material give each unit its own character.

GUTEX Thermowood insulation; eco friendly and recyclable material. Creates good indoor climate; can absorb and transport moist easily, is easily applicable and has a fire

Climarad 2.0 + Movair sill + heat pump natural ventilation and heating is in each apartment decentralised and has a low energy demand due to the combination mentioned above. The air, coming through the sill is warmed up by the Climarad. Every apartment has a heat pump which is connected to the climarad and the energy roof.



Cove
due to the raise of ground level (1,41m) a cove has been used to allow ventilation and daylight into the cellar beneath.

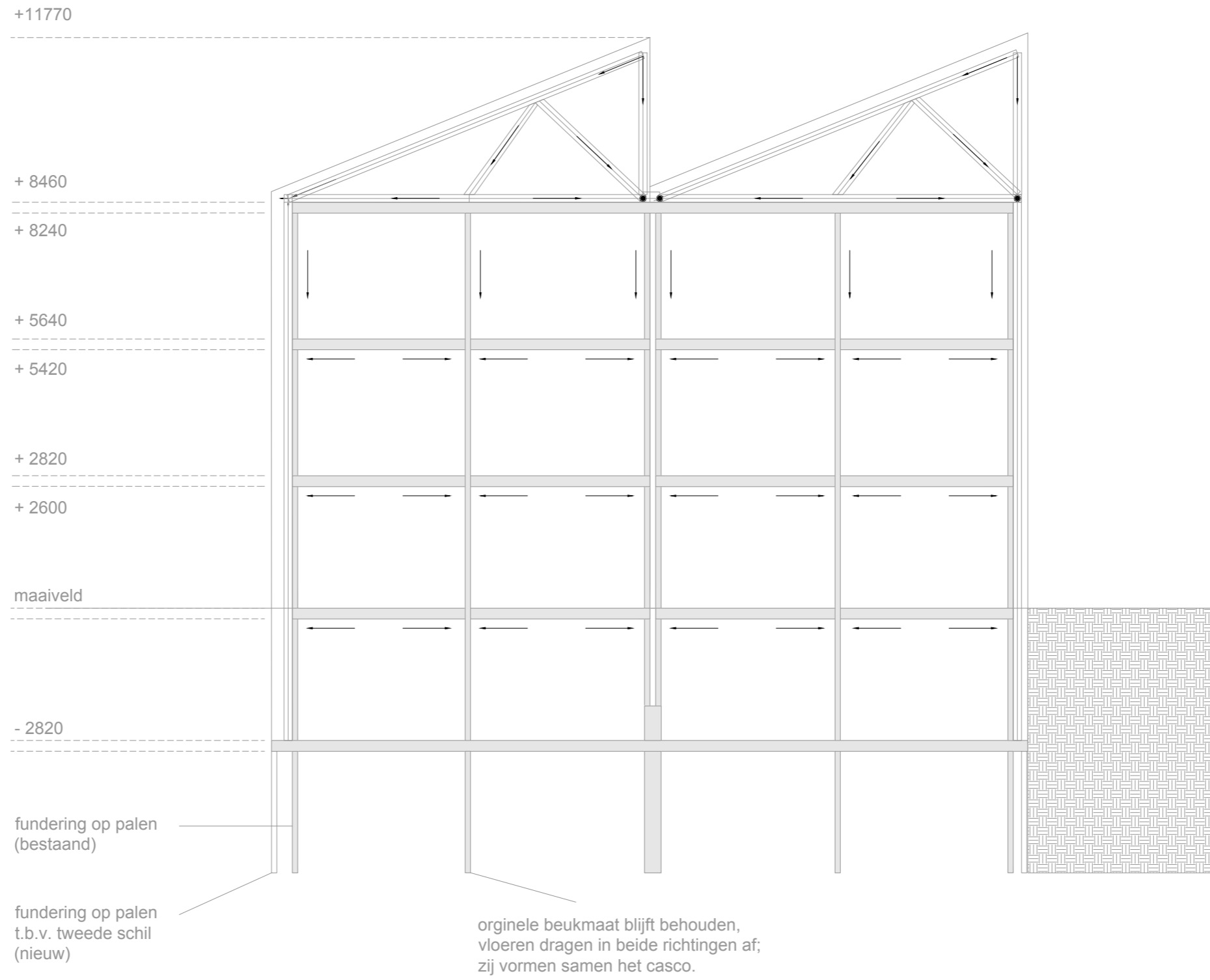
Low footprint
the energy roof and heat pump can provide warm water usable in the kitchen and under the shower. In the kitchen will be electric. Apart from the energy roof, the housing block will be incorporated into the 'city heating network', provided by the municipality.

Smart building materials
during the transformation, some interior walls (which are not part of the load bearing structure) have been demolished. The new interior walls are easy and light weighted. The GUTEX walls consist of a wooden skeleton filled with acoustic insulation, finished with a plaster layer.

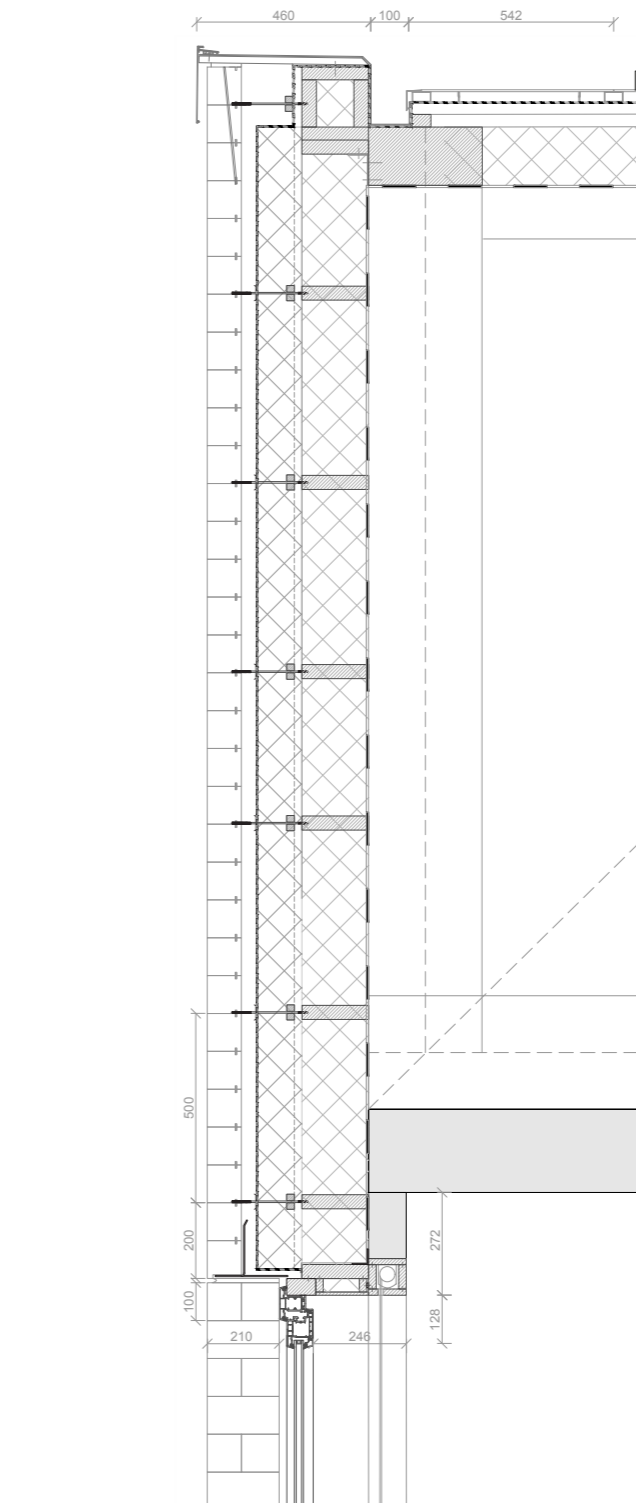
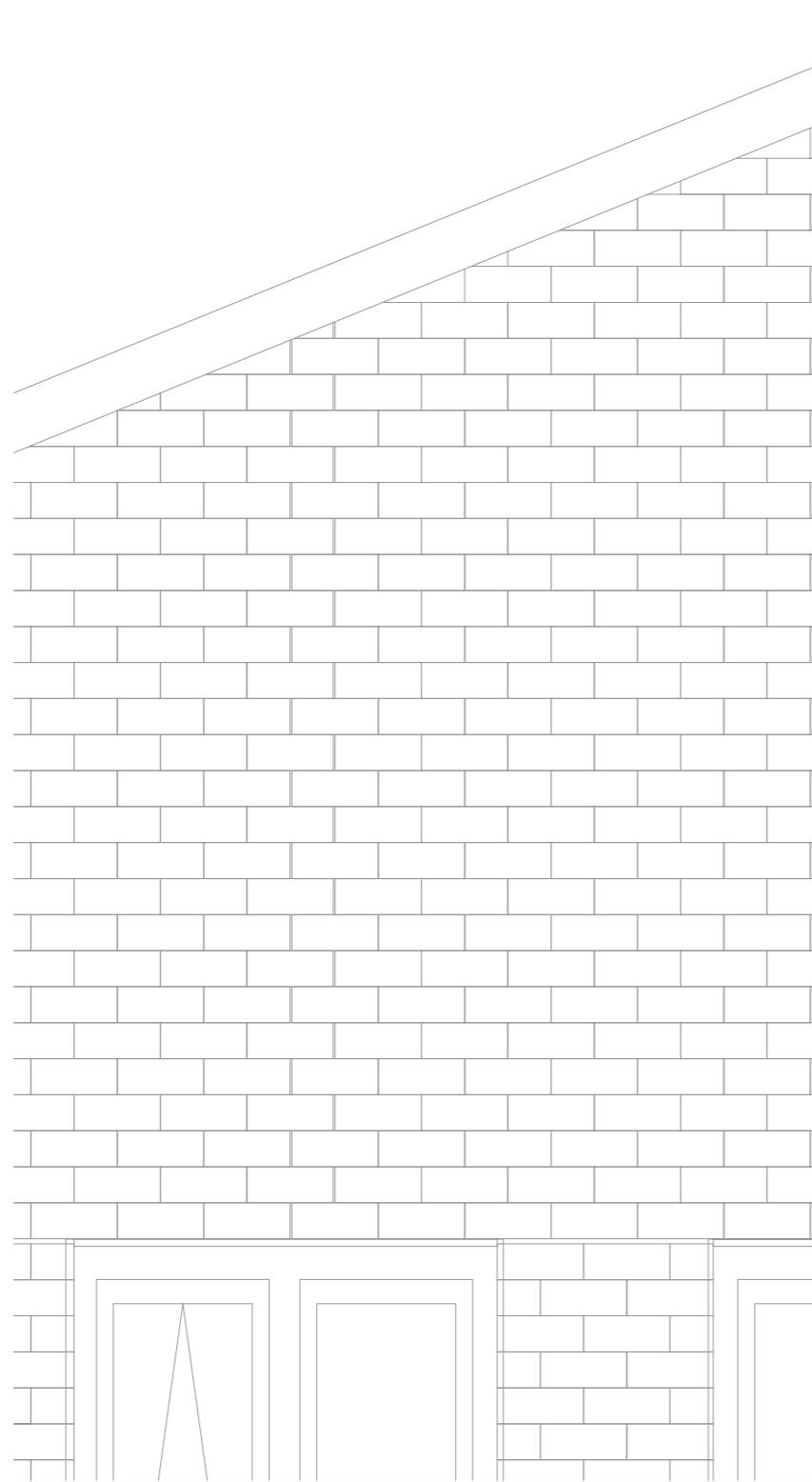
Building and nature are one
Apart from the building facade and its installations, the garden inside and the park outside the block can foster a better outdoor climate by providing shadow, and purifying the air.

To accomplish this and to create a pleasant outdoor climate for all its habitants (young, old, insects, birds) these places need a variety of trees, flowers, play zones, gardens, places to rest etc. This should be done in cooperation with the residents, landscapes architect.

Draagconstructie



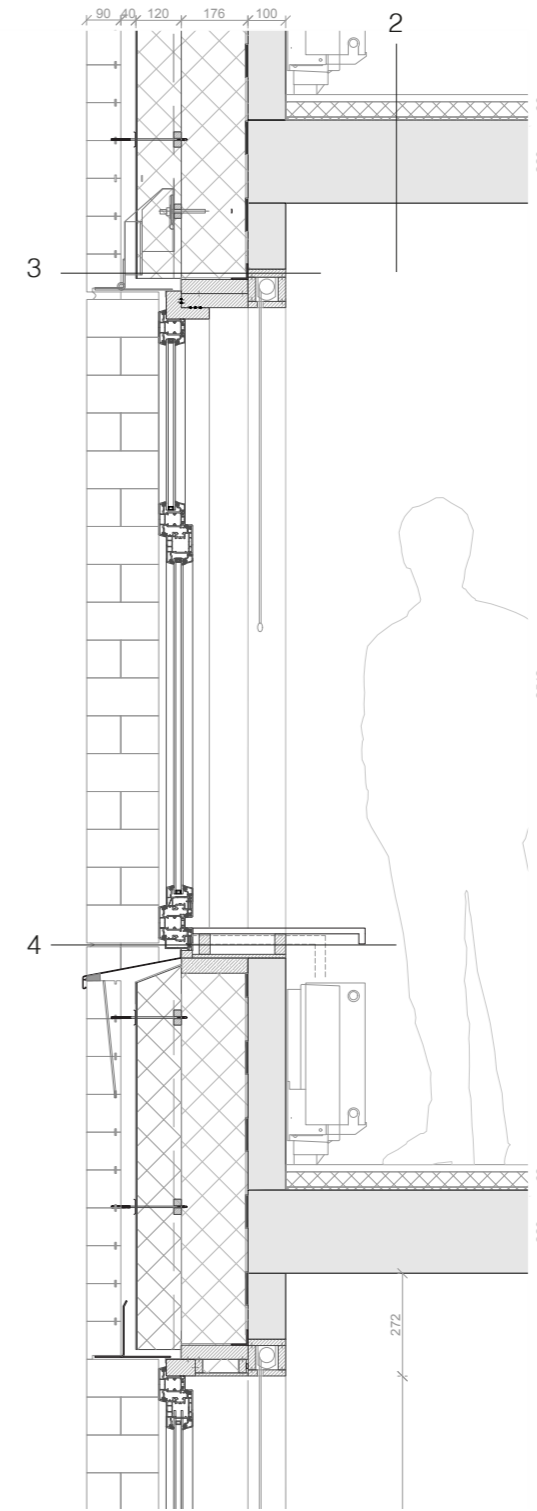
Verticaal gevel detail
dak 1:20



1.

glas-glas BIPV panelen
rubberen afdichting,
30/40 aluminium regel,
30/80 aluminium stelprofiel,
30/80 mm panlatten,
30/40 mm tengels,
damp open & waterafstotend folie,
40/172 mm houtskeletbouw,
172 mm GUTEX Thermoflex isolatie,
dampremmende laag,
300mm houten balk.

Verticaal gevel detail
verdieping 1:20



2.

ClimaRad 2.0,
68mm zwevende dekvloer;
waarvan 60 mm geluidsisolatie,
220mm betonvloer.

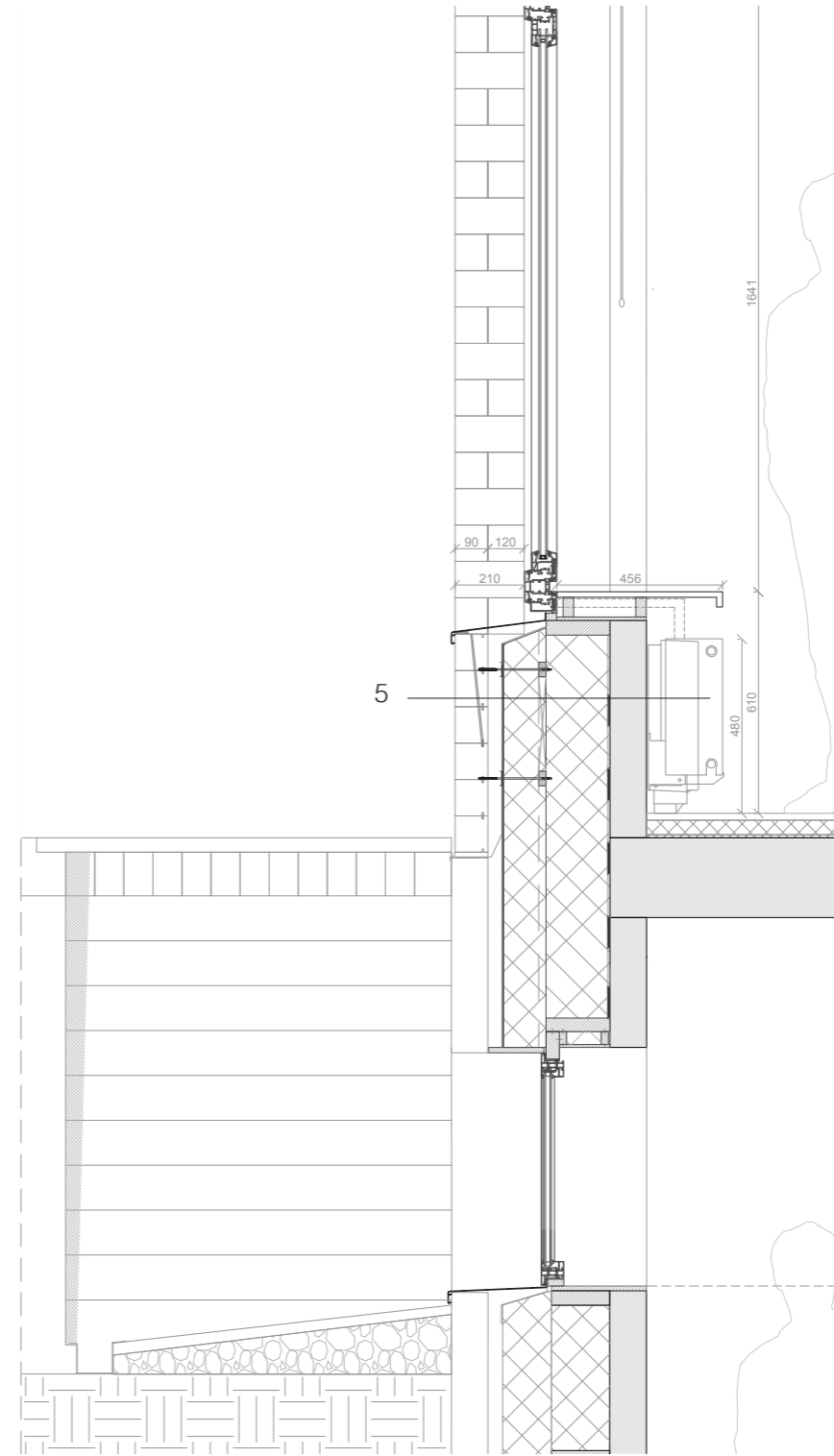
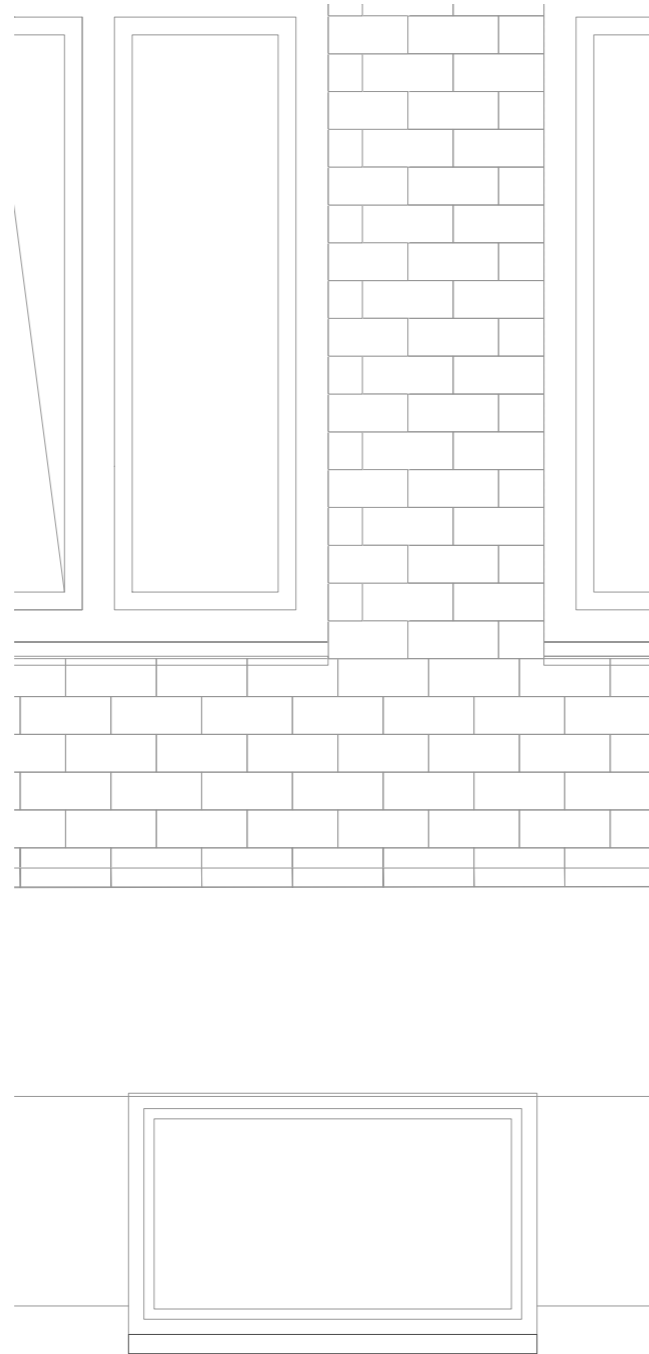
3.

90mm ClickBrick lateisteen,
40mm luchtsouw,
geveldrager,
stel en regelwerk,
damp open en waterkerende laag,
120mm GUTEX Multitherm isolatie,
176/40 mm houtskeletbouw,
176mm Thermoflex isolatie,
dampremmende laag,
100mm betonskelet,
inbouw binnenzonwering Verosol.

4.

passteen + sponningsdiepte in te
meten in het werk,
Movair onderdorpel (*natuurlijke
ventilatie*),
55mm verhoogde vensterbank
ClimaRad 2.0.

Verticaal gevel detail
maaiveld 1:20

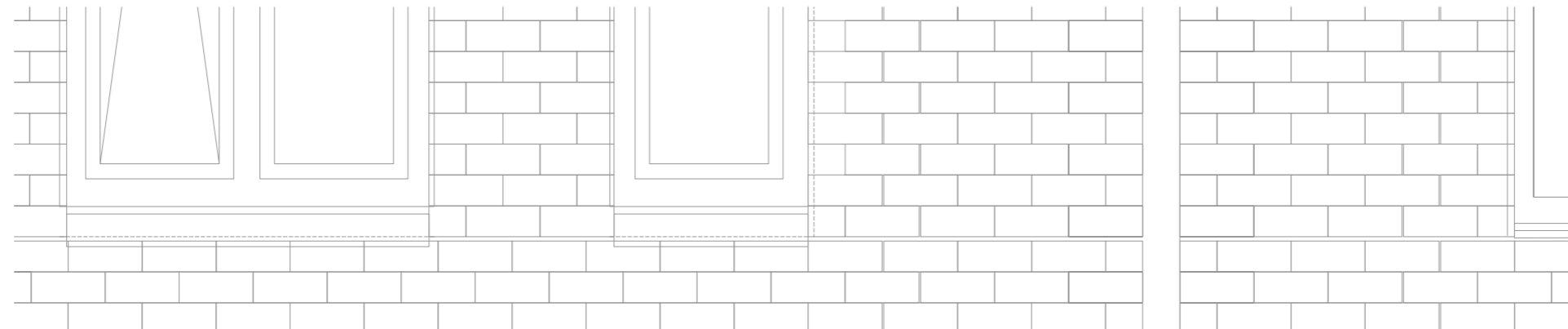
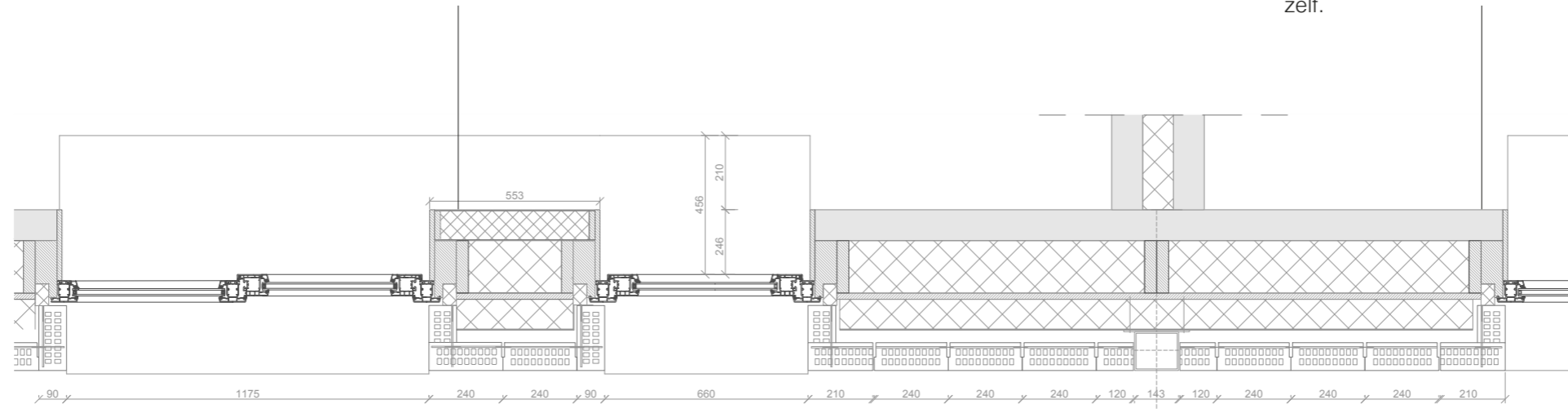


- 5.
- 90mm ClickBricks, muurdrager,
 - 40 mm luchtspouw,
 - RVS Spouwankers, voorzien van houtdraad voor HSB achterconstructie,
 - Isolatieklemschijf met druppelafvoer, damp open en waterafstotende laag,
 - 120mm GUTEX Multiflex isolatie,
 - 176/40mm houtskeletbouw,
 - 176mm GUTEX Thermoflex isolatie, dampremmende laag,
 - 100mm betonskelet,
 - ClimaRad 2.0.

Horizontaal gevel detail aansluiting raamkozijnen en hwa 1:20

In het werk gemeten voorzetwand,
maakt het inbouwen van vereschillende
kozijnenbreedtes mogelijk.

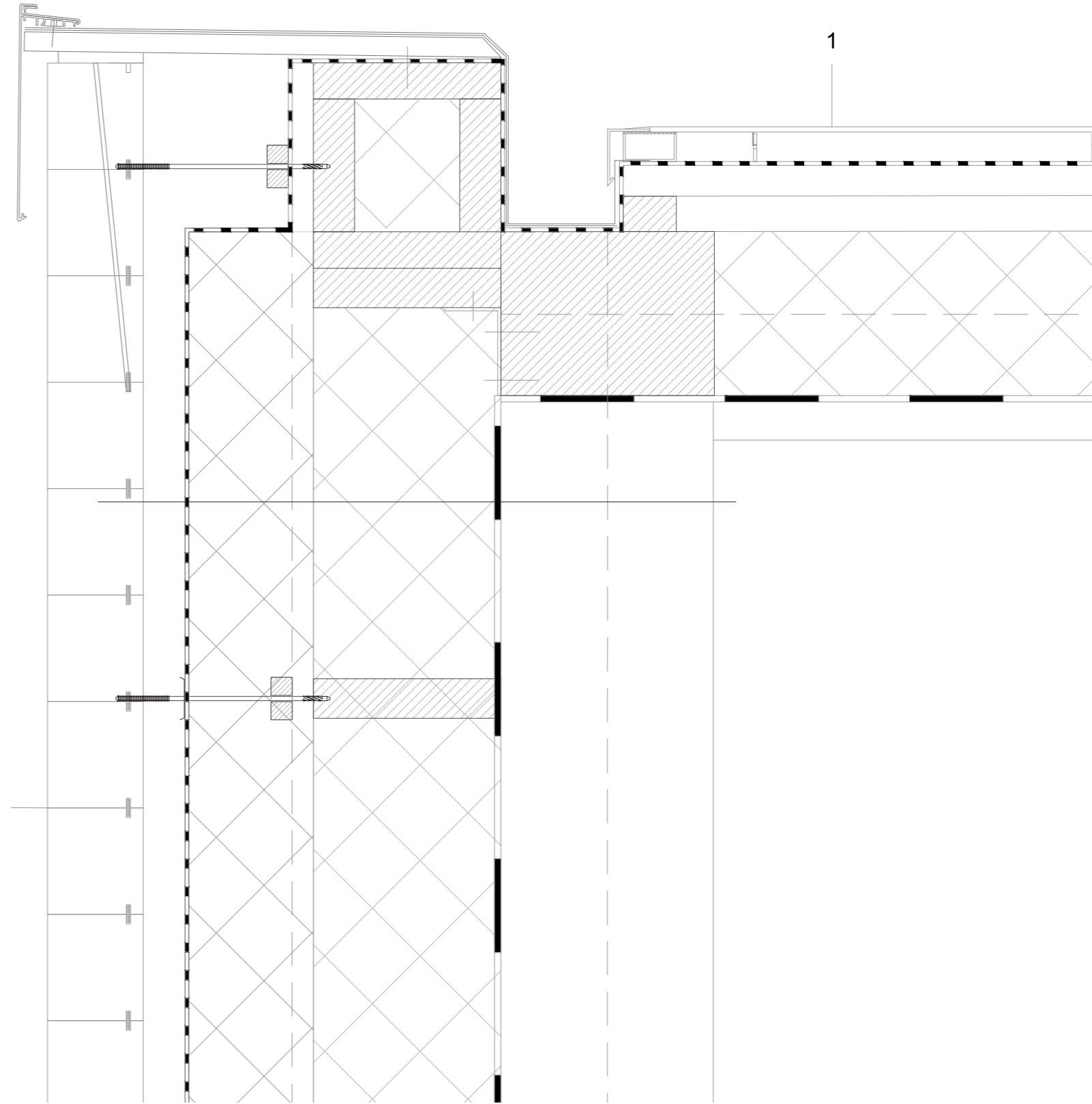
ClicBricks gaan de hoek om en bepalen
de positie van het kozijn. De mate waarin
de ClickBricks het kozijn overlappen kan
verschillen, net als de maten het kozijn
zelf.



Verticaal gevel detail
dakdetail 1:5

1.

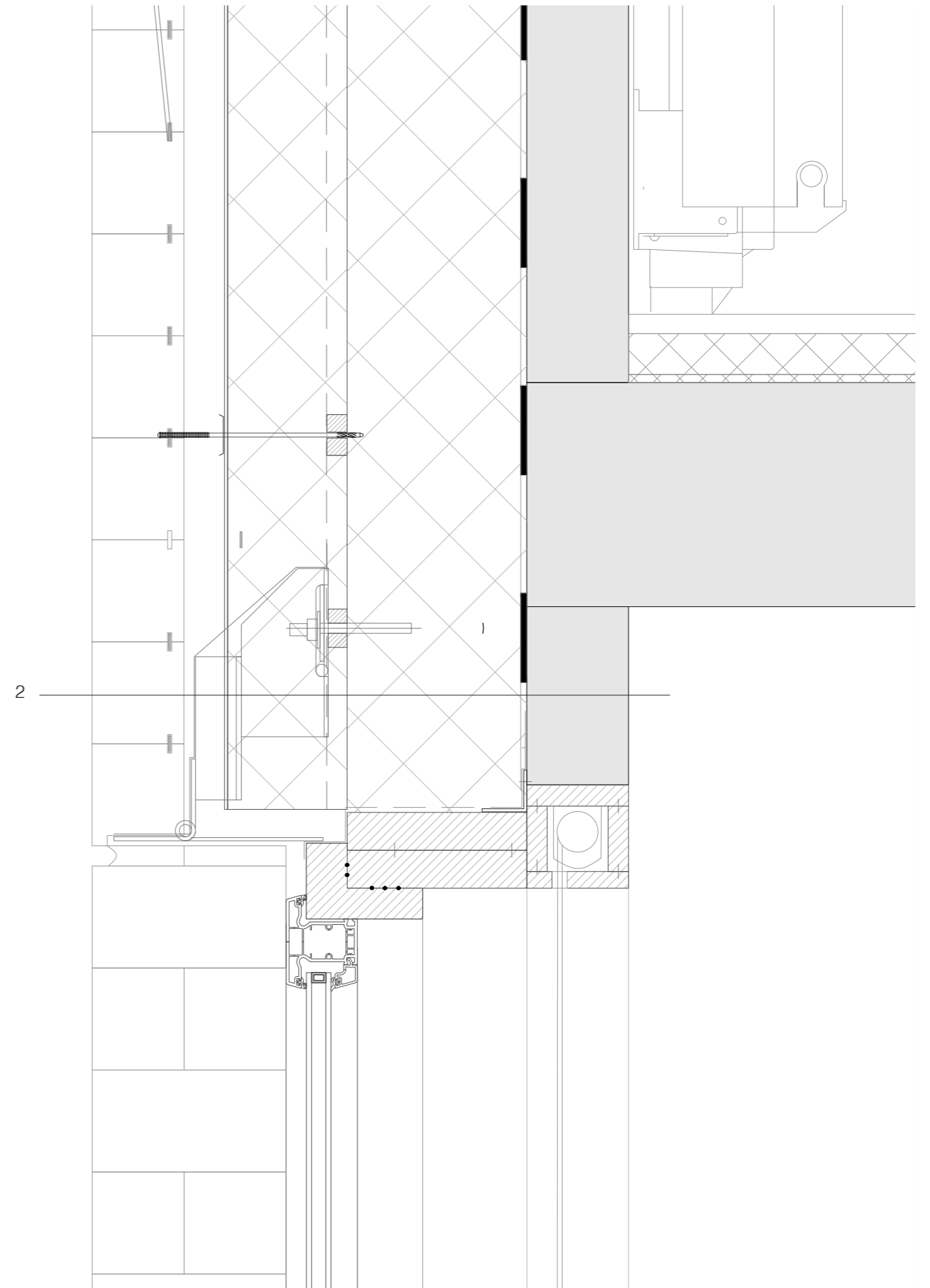
glas-glas BIPV panelen
rubberen afdichting,
30/40 aluminium regel,
30/80 aluminium stelprofiel,
30/80 mm panlatten,
30/40 mm tengels,
damp open & waterafstotend folie,
40/172 mm houtskeletbouw,
172 mm GUTEX Thermoflex isolatie,
dampremmende laag,
300mm houten balk.



Verticaal gevel detail
aansluiting raamkozijnen 1:5

2.

90mm ClickBrick lateisteen,
40mm luchtspouw,
geveldrager,
stel en regel werk,
damp open en waterkerende laag,
120mm GUTEX Multitherm isolatie,
176/40 mm houtskeletbouw,
176mm Thermoflex isolatie,
dampremmende laag,
100mm betonskelet,
inbouw binnenzonwering Verosol.



Verticaal gevel detail
aansluiting raamkozijnen 1:5

3.

passteen + sponningsdiepte in te
meten in het werk,
Movair onderdorpel (*natuurlijke
ventilatie*),
55mm verhoogde vensterbank
ClimaRad 2.0.

4.

90mm ClickBricks,
muurdrager,
40 mm luchtspouw,
RVS Spouwankers, voorzien van hout-
draad voor HSB achterconstructie,
Isolatieklemschijf met druppelafvoer,
damp open en waterafstotende laag,
120mm GUTEX Multiflex isolatie,
176/40mm houtskeletbouw,
176mm GUTEX Thermoflex isolatie,
dampremmende laag,
100mm betonskelet,
ClimaRad 2.0.

