

## Comparing Hip Dysplasia in Dogs and Humans

### A Review

Willemsen, K.; Möring, Michelle M.; Harlianto, Netanja I.; Tryfonidou, Marianna A.; van der Wal, Bart C.H.; Weinans, H.H.; Meij, Björn P. ; Sakkers, Ralph J. B.

**DOI**

[10.3389/fvets.2021.791434](https://doi.org/10.3389/fvets.2021.791434)

**Publication date**

2021

**Document Version**

Final published version

**Published in**

Frontiers in Veterinary Science

**Citation (APA)**

Willemsen, K., Möring, M. M., Harlianto, N. I., Tryfonidou, M. A., van der Wal, B. C. H., Weinans, H. H., Meij, B. P., & Sakkers, R. J. B. (2021). Comparing Hip Dysplasia in Dogs and Humans: A Review. *Frontiers in Veterinary Science*, 8, Article 791434. <https://doi.org/10.3389/fvets.2021.791434>

**Important note**

To cite this publication, please use the final published version (if applicable).  
Please check the document version above.

**Copyright**

Other than for strictly personal use, it is not permitted to download, forward or distribute the text or part of it, without the consent of the author(s) and/or copyright holder(s), unless the work is under an open content license such as Creative Commons.

**Takedown policy**

Please contact us and provide details if you believe this document breaches copyrights.  
We will remove access to the work immediately and investigate your claim.



# Comparing Hip Dysplasia in Dogs and Humans: A Review

Koen Willemsen<sup>1,2</sup>, Michelle M. Möring<sup>2</sup>, Netanja I. Harlianto<sup>2</sup>, Marianna A. Tryfonidou<sup>3</sup>, Bart C. H. van der Wal<sup>2</sup>, Harrie Weinans<sup>2,4\*</sup>, Björn P. Meij<sup>3</sup> and Ralph J. B. Sakkers<sup>2</sup>

<sup>1</sup> 3D Lab, Division of Surgical Specialties, University Medical Center Utrecht, Utrecht, Netherlands, <sup>2</sup> Department of Orthopedics, University Medical Center Utrecht, Utrecht, Netherlands, <sup>3</sup> Department of Clinical Sciences, Faculty of Veterinary Medicine, Utrecht University, Utrecht, Netherlands, <sup>4</sup> Department of Biomechanical Engineering, Delft University of Technology, Delft, Netherlands

Hip dysplasia (HD) is common in both humans and dogs. This interconnection is because humans and dogs descended from a common ancestor and therefore have a similar anatomy at micro- and macroscopic levels. Furthermore, dogs are the animals of choice for testing new treatments for human hip dysplasia and orthopedic surgery in general. However, little literature exists comparing HD between the two species. Therefore, the aim of this review is to describe the anatomy, etiology, pathogenesis, diagnostics, and treatment of HD in humans and dogs. HD as an orthopedic condition has many common characteristics in terms of etiology and pathogenesis and most of the differences can be explained by the evolutionary differences between dogs and humans. Likewise, the treatment of HD shows many commonalities between humans and dogs. Conservative treatment and surgical interventions such as femoral osteotomy, pelvic osteotomy and total hip arthroplasty are very similar between humans and dogs. Therefore, future integration of knowledge and experiences for HD between dogs and humans could be beneficial for both species.

**Keywords:** hip dysplasia, one health, treatment, translational, comparative, acetabulum

## OPEN ACCESS

### Edited by:

Jan H. Spaas,  
Boehringer Ingelheim, Germany

### Reviewed by:

Wanda J. Gordon-Evans,  
University of Minnesota Twin Cities,  
United States  
Carlien Brondeel,  
Ghent University, Belgium

### \*Correspondence:

Harrie Weinans  
h.h.weinans@umcutrecht.nl

### Specialty section:

This article was submitted to  
Veterinary Regenerative Medicine,  
a section of the journal  
Frontiers in Veterinary Science

**Received:** 08 October 2021

**Accepted:** 17 November 2021

**Published:** 15 December 2021

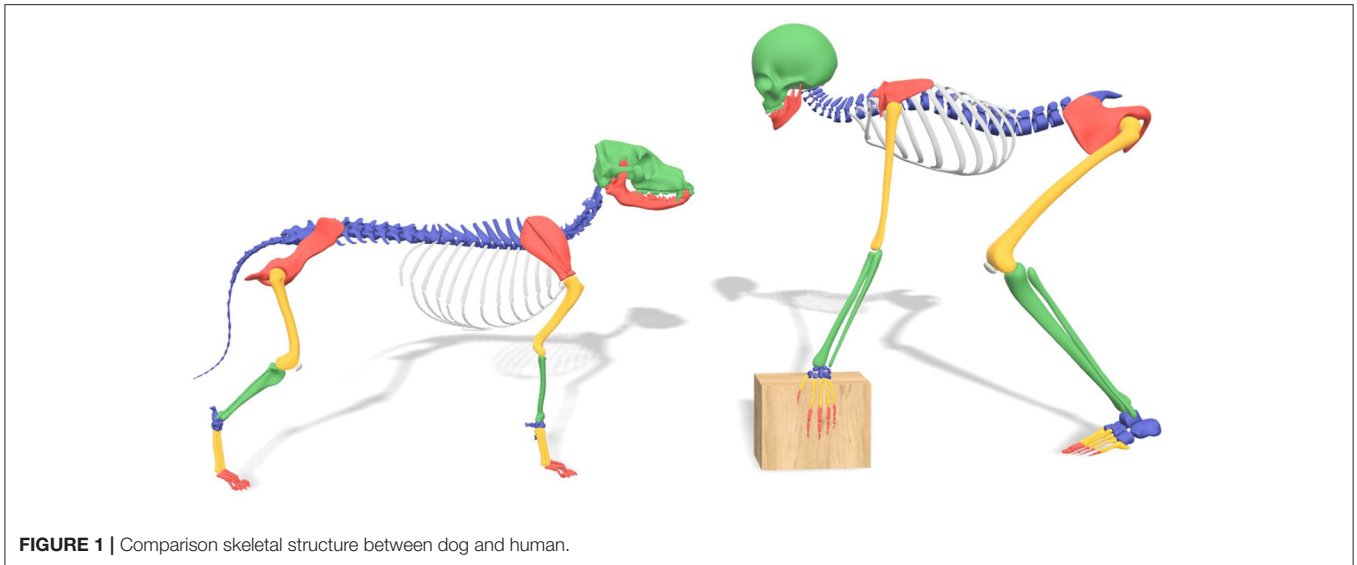
### Citation:

Willemsen K, Möring MM, Harlianto NI, Tryfonidou MA, van der Wal BCH, Weinans H, Meij BP and Sakkers RJB (2021) Comparing Hip Dysplasia in Dogs and Humans: A Review. *Front. Vet. Sci.* 8:791434. doi: 10.3389/fvets.2021.791434

## INTRODUCTION

Dogs and humans have developed from a common ancestor. Both species are vertebrates and terrestrial mammals, with a very similar homologous musculoskeletal structure (**Figure 1**). Because of this resemblance in body structure, certain diseases in both species have a common ground. One of these diseases is hip dysplasia (HD). HD was first described in dogs in the 1930's (1) and in humans as early as Hippocrates (2). HD is better known as canine hip dysplasia (CHD) in dogs, and developmental dysplasia of the hip (DDH) in humans. The prevalence of HD in humans varies between 0.1 and 10%, depending on the population and definition (3, 4). In dogs, the prevalence varies between 0 and 73.4%, depending on the breed (5–8).

There are similar characteristics for HD in humans and dogs. In both species the acetabular cover of the femoral head is insufficient, either because the acetabulum (5, 9, 10) or the femoral head (5, 9, 10) is deformed, or joint laxity (2, 5) is present. This disturbed femuro-acetabular relationship causes abnormally high peak forces (1, 6, 10) with or without joint instability and (sub)luxation (2, 5, 9) resulting in osteoarthritic changes (2, 5, 9). The body tries to counter the sequela of HD in both species by thickening and stiffening of the joint capsule (10–12) in order to reduce the laxity (11, 12). However, HD will eventually induce osteoarthritis (OA) resulting in pain (6, 13), lameness (14), and loss of limb function (6, 13), reducing quality of life.



**FIGURE 1** | Comparison skeletal structure between dog and human.

While CHD and DDH show numerous similar characteristics, disease management is not always the same for both species. In this review we give an overview of the anatomy, etiology, development, diagnostics and treatment of HD in humans and dogs. This will provide veterinarians and physicians a perspective and incentive to share the combined translational knowledge.

## ANATOMY

Initially, the anatomy of humans and dogs may seem very different. For instance, an obvious difference between dogs and humans is that dogs have a quadrupedal (four-legged) gait while humans have adopted a bipedal (two-legged) gait. While some anatomical differences have developed due to this difference in gait, dogs and humans have more in common than one might think (Figure 1).

The human bipedal gait has a smaller base of support (less point of ground contact) and an elevated center of mass (15, 16). To balance the body, humans have developed a lumbar lordosis so the center of mass (head, arms and trunk) is directly above the point of ground contact. This is also more energy efficient (17, 18). Similarly, a wider pelvis with more laterally oriented iliac crests (as opposed to the coronal plane in dogs) allowed for some changes in musculature, improving balance on one leg, energy efficiency, and increasing stride length (16–18).

While the load orientation (19) of the hip is very similar in dogs and humans, the difference between bipedal and quadrupedal gait gives different load distribution between limbs. Humans distribute their bodyweight between two legs while dogs distribute their weight over four legs, with the front legs carrying approximately 60–65% of the bodyweight (20–22). Because of the dominance of the front legs over the hind legs, dogs are capable of compensating for hip abnormalities (e.g., HD) by lowering their neck and increasing the load on the non-affected side (20).

Humans can also reduce load on the affected sides by using instruments such as a cane or a stroller (23).

The canine and human anatomy is not just similar on a macroscopic level. Human and canine hips have a similar cortical microstructure (24, 25) and long bone vascularization (25, 26). Because of these external and internal similarities, the dog has long since been (one of) the animal(s) of choice for orthopedic research aimed at humans (24, 27, 28).

## ETIOLOGY AND PATHOGENESIS

While the exact etiology of HD for both humans and dogs remains unknown (10, 29), the general agreement is that both genetic and environmental factors influence the development of CHD and DDH (4, 8). First the genetic factors are discussed, followed by environmental factors and finished with the pathogenesis.

Some examples of common genetic factors that influence the occurrence of HD in both species include breed (1, 6) ethnicity (29), increased anteversion angle of the femur (2, 30, 31), neck shaft angle of the femur (2, 31), and collagen composition (1, 4). Because of these high genetic factors, family anamnesis is important for discovering HD in humans and improving breeding programs in dogs. However, not all genetic factors have an known influence on both species, e.g., a clear genetic factor such as female sex in humans is known for a higher incidence of HD (4:1, Female:Male) (3, 9), while no such relation is known for dogs (8, 32).

Besides genetic factors there are many different environmental factors influencing the development and incidence of HD. Some common environmental factors concern the nutritional state such as diet (33), obesity (14, 34, 35) and high birth weight (5, 36). Furthermore, environmental factors such as to seasonal influence (4, 7) and hormone levels have an association with HD

(4, 37). Other environmental factors concern disturbances of the biomechanical equilibrium in the pelvic area, e.g., transitional vertebrae (38) can change the forces flowing through the hip. This also happens with restrictive swaddling of babies which is common in certain human cultures. Swaddling limits the abduction and therefore reduces the required force on the triradiate growth plate (39, 40).

Most of previous mentioned factors are identical between both species, however factors surrounding birth do differ between species. Humans have only one baby at a time, while dogs have several pups in their litter, meaning intra-uterine mechanical factors are different. For instance, breech presentation in humans is associated with a high incidence of DDH in single child pregnancies, but no relation has been found in twin pregnancies (3, 41). Similarly, other factors like oligohydramnios (42), breech position, being first born (3, 4) and even the preference for the left hip are commonly described in humans, but not in dogs who are typically born in a litter. The preference for the left hip in humans might be explained as the left hip is often positioned against the mother's spine in the womb, which limits abduction (5, 9) and reduces force on the developing triradiate cartilage.

Besides genetic and environmental factors, there is a clear developmental aspect in both DDH and CHD. Both species need the femoral head to be centered on the triradiate cartilage of the acetabulum in order to develop normal joint morphology (5, 9, 10). Well balanced supporting structures of the joint like the pelvic muscles (2, 43), the joint capsule, and the femoral head ligament are important to maintain joint congruity (5). A larger amount of pelvic muscle mass is associated with a lower incidence of CHD (2, 10). Similarly, weak pelvic muscles in dogs are associated with adverse joint changes (2). For humans, weak pelvic muscles have also been theorized to cause dysplasia and degenerative joint change (43).

Human newborns with normal hips might develop HD later in life (44). Of newborns with perceptible HD, 88% will develop into normal hip joints by the age of 8 weeks, without any intervention (9, 39, 45). However, the older the infant is, the less likely it will be that natural normalization occurs (9). The abnormal stress on the hip joint caused by HD can cause pain even before degenerative changes start. Patients with HD can already present with OA in adolescents and young adults (46). In CHD, the hips are typically normal at birth (2, 10). However, early signs such as edematous and slightly torn ligaments of the femoral head can already be seen around 4 weeks of age (47, 48). Subsequently, further dysplastic joint changes develop such as joint laxity and deformity of the acetabulum and femur (47). This deformity eventually leads to cartilage changes, pain and lameness. Some dogs start showing clinical signs around 3–12 months of age (10, 49), while other dogs remain asymptomatic and present long after full maturation.

## DIAGNOSIS

Early detection of HD in humans and dogs can lead to earlier interventions, which is important for disease management (9, 50). To ensure early detection in humans, many countries

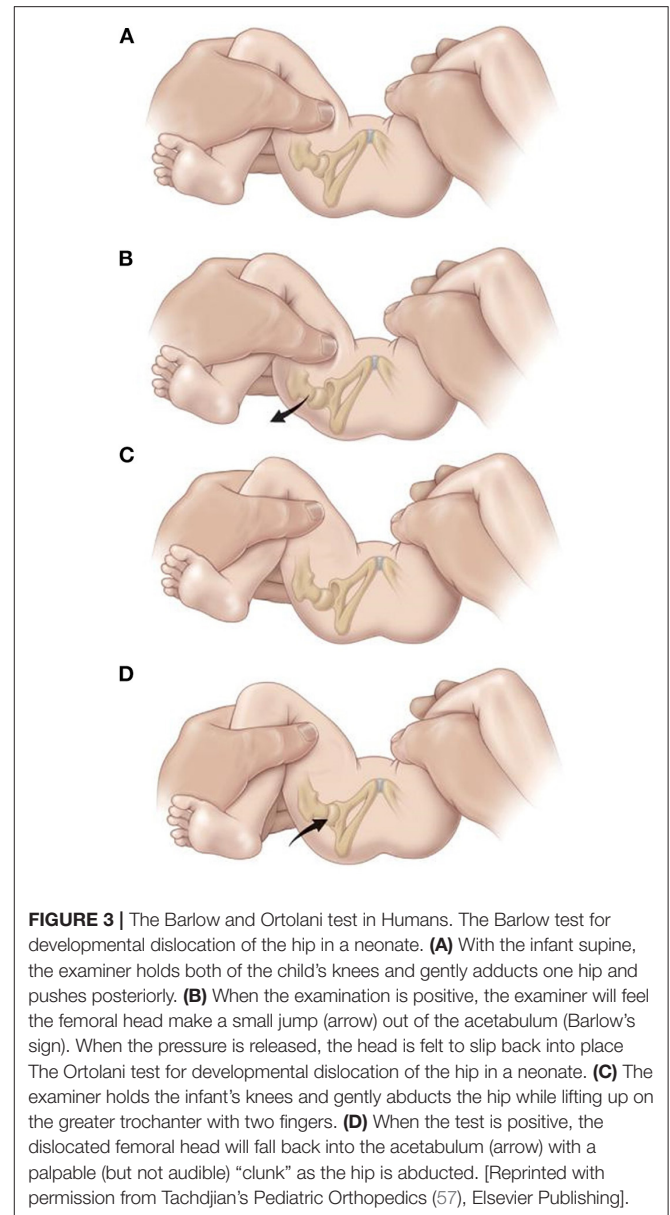
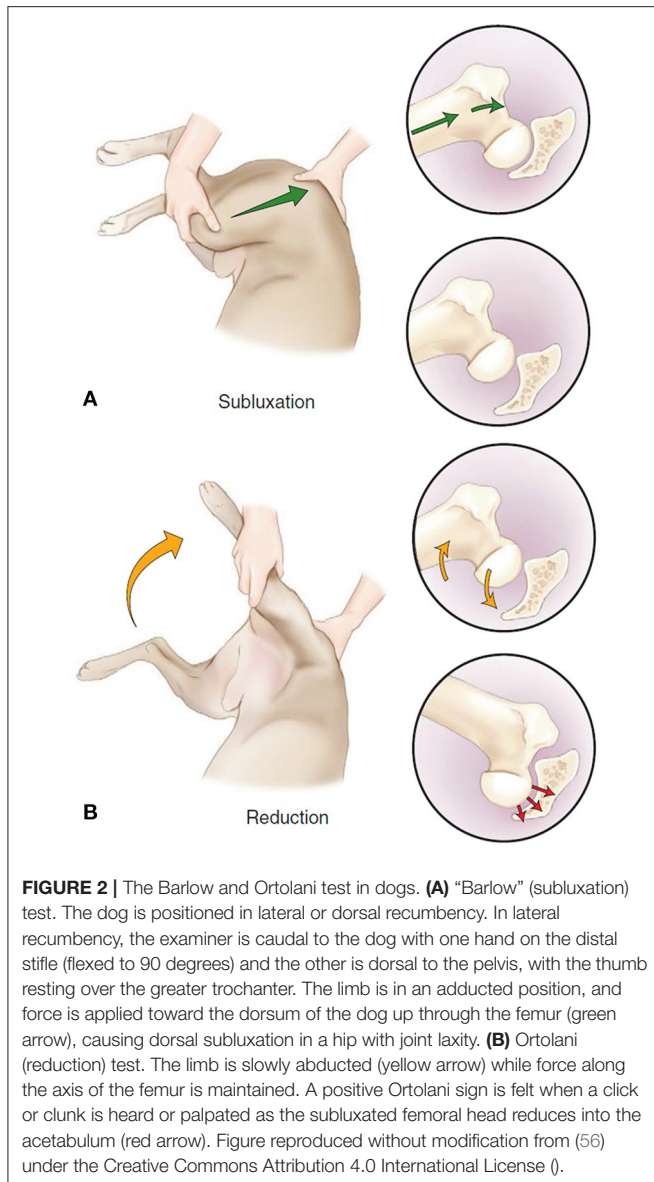
have developed and implemented screening programs aimed at diagnosing DDH in infancy (51). In dogs early detection of HD is usually driven by the occurrence of clinical signs from age of 4 to 5 months, which will stimulate owners to seek veterinary advice for diagnostic testing, usually with radiography. However, screening programs for CHD in dogs are recommended for breeding, and is globally implemented. However, the minimum age for screening using radiographs is commonly set at skeletally mature age of 1 year for most breeds and at 18 months for selected large to giant breeds. Since HD in young dogs is commonly asymptomatic this will prevent early detection of HD in dogs. While the details might differ, the clinical diagnostics in dogs and humans are very comparable, generally consisting of physical examination and imaging.

## Physical Examination

Early observational findings during physical examination in humans are restricted abduction and difference in leg length in case of hip (sub)luxation (9, 39). Asymmetric gluteal folds who were once thought to be of high clinical significance did not have a high predictive value and are therefore not used anymore (52). In a child of walking age the Trendelenburg sign can be seen with or without asymmetries, like a proximal thigh crease, posterior knee crease, wide perineum, prominent hip curvature, and limping (39, 53). With bilaterally affected hips this asymmetry is usually absent, but bilateral Trendelenburg sign, waddling gait (9, 39) and bilateral limited abduction (9) can be seen. Dogs should be observed in rest, during activity, and after exercise (54). The main finding in young dogs with hip joint laxity is lameness that increases during exercise (1), but also hip atrophy, reduced range of motion and pain during flexion and extension may be present. Hip pain in dogs is usually noted by abnormal behavior like bunny hopping with pelvic limbs, difficulty to rise, and less playfulness together with grunting, whimpering, or whining (55). The combined pain assessment by both the owner and the veterinarian seems to work best (55), but there is no consensus on a gold standard (1, 55). Furthermore, dogs do not need a pain free full range of motion for a normal gait (11), typically dogs with no or minimal clinical signs could have severe dysplastic hips (12).

For examining the depth of the acetabulum and joint laxity, the following clinical tests are performed: the Barlow test, the Barden test, the Galeazzi test, and the Ortolani test, all of which were originally developed for use in humans (1, 9). The Ortolani test is most commonly used in both humans (9, 51) (**Figure 2**) and dogs (1, 54) (**Figure 3**). The Barlow test is also commonly used in dogs (1, 54). It should be noted that while on human infants and dogs these tests can be directly performed, these tests often require sedation or general anesthesia when dogs are not cooperative (54) (**Figures 2, 3**).

Since DDH and CHD develop at different rates, a positive result has slightly different implications. In humans a positive result indicates subluxation or dislocation of the femoral head typically due to decreased coverage (9, 51). A positive Ortolani test in young dogs usually points to joint laxity (1, 54) which is a sign of HD in development (58).



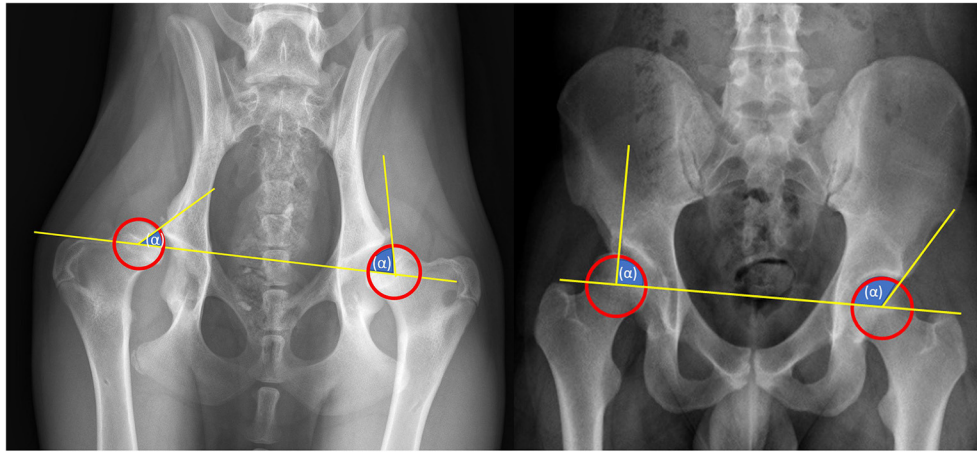
### Imaging

Radiography is the golden standard for diagnosing HD in dogs (1). Historically, pelvic and hip radiography has been used for diagnosing HD in humans (9, 59). However, in some parts of the worlds X-rays have been partially replaced by ultrasound imaging for young patients (60) as classification of HD on X-rays is currently considered less reliable before ossification of the femoral head center occurs at 4–6 months (9, 39). Although there are widely accepted ultrasound classifications, ultrasound images still has drawbacks, such as: high variability and low agreement (61). In dogs the ossification starts at 8 weeks, which makes ultrasound less useful as the ossification distorts the view of the acetabulum on ultrasound (54). The way radiographs are attained and measured is remarkably alike, both in dogs and

humans the radiographs are taken in ventrodorsal and anterior-posterior position to measure the center-edge (CE)-angle and the Norberg angle (Figure 4)(59, 62–64). Besides the CE-angle and the Norberg angle, other radiographic parameters can be measured to increase the validity of the diagnosis. However the CE-angle is the most renown (65).

### TREATMENT

The available treatments for HD in humans and dogs change when patients develop toward skeletal maturity (39). Young patients have soft and pliable bone with good remodeling capabilities due to growth. Therefore, HD treatment can focus on stimulating growth by redirecting the femoral head to the



**FIGURE 4** | Radiographic diagnostics. Left: Norberg-Angle, take the center of each femoral head (hip ball) and draw a line between them. Then take the center of the femoral head and draw a line to the outer point of the pelvis. The angle between these lines is the Norberg angle. The Norberg angle is calculated for each hip joint. A normal Norberg Angle ranges from 100/105 to 115 degrees. <100 degrees is dysplastic. Right: CE-angle, take the center of each femoral head (hip ball) and draw a line between them. Then take the center of the femoral head and draw a line to the outer point of the pelvis. The angle between these lines is the CE angle. The CE-angle is calculated for each hip joint. A normal CE Angle ranges from 110/115 to 130 degrees. <110 degrees is dysplastic.

center of the triradiate growth plate of the acetabulum in order to create a stable well-covered hip joint (9). As the patient matures the growth potential of bone decreases and the ability to correct the joint relationships with it. When forming a congruent well-covered joint is no longer an option, osteoarthritis might develop.

Skeletal maturity is reached around 15–18 years in humans (43) and 1–1.5 years in dogs (66). The triradiate cartilage (acetabular growth plate) closes around 14 years of age in humans (67) and around 6 months of age in dogs. There is no clearly defined separation between treatment options for certain ages and stages of bone development. Therefore, in order to accommodate this review a separation is made between “early” and “late” treatment.

### Early Non-surgical Treatment

Early treatment of hip dysplasia in humans distinguishes between a (sub-)luxated and a non-luxated hip. A luxated hip needs repositioning first before the acetabular dysplasia can be treated.

When a dysplastic hip is diagnosed with (sub)luxation of the femoral head, a Pavlik harness is most often applied as first treatment. The Pavlik harness uses several straps to flex the hips and knees and prevent adduction, while movement is still possible (9, 68). In a child treated within the 1 weeks after birth this position forces the femoral head into the acetabular socket and onto the triradiate cartilage. After creation of a stable joint, the harness is still worn for 23 h per day until a morphologically normal hip joint is found on imaging (39, 68). When a stable reduction of the hip is not reached within 3–4 weeks, reposition of the hip under full relaxation under anesthesia might be tried, with or without adductor tenotomy, followed by a plaster cast usually for 3 months (9, 68). If repositioning of the hip fails under anesthesia, open reposition of the hip should follow, usually after the age of 6–9 months (9). There is no consensus about optimal treatment length (9, 69). The Pavlik harness has not

been described for dogs, since they do not easily accept external hip coaptation devices. However, a somewhat similar concept was used in puppies with genetic predisposition for CHD that were raised in a small cage (1 m<sup>3</sup>) until they finished growing. This caused them to sit more often with their hind limbs spread (flexion and abduction) and reduced the prevalence of CHD. This method prevents dogs from socializing and is therefore not used in daily practice (48, 54).

In young dogs with CHD that start to show clinical signs, usually from age 4 to 5 months, the non-surgical treatment measures are similar to those at older age and therefore will be discussed in more detail in section Late Non-surgical Treatment.

### Early Surgical Treatment

If non-surgical treatments are ineffective or the child gets older than 9–18 months, open reduction of the hip joint can be performed (9, 46). Open reduction focuses on reducing the subluxated or dislocated hip and creating a stable hip joint, similar to closed reduction. Open reduction of the hip is usually combined with capsular reefing and the release of the transverse acetabular ligament, and may be combined with an acetabular or femoral osteotomy in order to create a stable well-centered hip (9). After the open reduction, the child is treated with a spica cast to maintain the position of the hips (9). In dogs open reduction for a luxated hip due to severe HD is never performed. Hip luxation in young dogs with HD, called the luxoid hip, is usually an indication for early euthanasia, femoral head and neck resection or total hip replacement from age 7–9 months.

In the older child with residual hip dysplasia, an acetabuloplasty, e.g., the Dega, or Pemberton acetabuloplasty is commonly used to improve centering and acetabular coverage of the femoral head (70, 71). While both procedures are different, both are curved partial osteotomies of the ilium, with a small (bone) graft placed in the osteotomy. This partial osteotomy

causes a hinging effect in the horizontal line of the triradiate cartilage and will reshape the acetabulum, reducing its diameter, yet increasing depth (72). The Pemberton acetabuloplasty improves anterior and lateral femoral head coverage, but not coverage of the posterior femoral head. The Dega acetabuloplasty increases the anterior, lateral, and posterior femoral head coverage (72). Acetabuloplasties give the best results when used on patients 2–8 years old (46).

Another common technique for pelvic osteotomies in young children is the Salter osteotomy (9, 72). This technique is based on a complete osteotomy of the ilium bone just superior of the acetabulum and redirection of the existing acetabulum (73, 74). Therefore, the Salter osteotomy does not alter the shape of the acetabulum. A possible complication described in the Salter osteotomy is instability (71, 74) and another complication for the Salter and Pemberton acetabuloplasty (71) is overcorrection, leading to excessive coverage of the femoral head resulting in femoral acetabular impingement (71, 74).

The majority of early surgical treatments, like the Pemberton and Salter osteotomy used in humans are not applicable in dogs simply because CHD is not detected early enough in the dog's life. The only comparable treatment in dogs is juvenile pubic symphysiodesis (JPS). The JPS is an early surgical treatment for CHD, and to our knowledge has not been used in humans. JPS is a relatively simple surgery in which the cartilage of the pubic symphysis is destroyed through electrocauterization. The heat causes the chondrocytes to become necrotic, resulting in premature closure of the pubic symphysis. Since other parts of the pelvis continue to grow, the acetabulum is rotated ventrolateral, similarly to the human Pemberton and Salter osteotomy, which allows for greater femoral head coverage (12, 54, 66). To be effective, JPS should be performed before week 18 in small dogs or week 22 in large breed dogs (12, 66).

Osteotomies of the femur are frequently used in humans and infrequently in dogs. In dogs aged ½–2 years the intertrochanteric femoral osteotomy is used to reduce the neck shaft angle (varisation) and anteversion angle, which are often increased in dysplastic hips. The femoral head is moved more medially (12, 75, 76) which helps redirect the femoral head into the acetabulum (75, 76). This is achieved by removing a bone wedge from the proximal femur and the bone is then stabilized by a hook plate (12, 75, 76). In humans, a femoral osteotomy can be performed sub- or intertrochanteric. The osteotomy also aims to reduce the anteversion (also called derotational osteotomy) and neck-shaft angle. Femoral osteotomies in humans are often combined with open reduction and acetabular osteotomies, between the ages of 2–14 years (69).

## Late Non-surgical Treatment

There are various late non-surgical treatments for dogs and humans with hip dysplasia. To decrease pain (1, 77), reduce lameness (14), and delay onset of osteoarthritis (1, 66) a variety of treatments are available including medication like NSAIDs (1), reducing body weight (34, 77), life style changes including training of pelvic muscles, exercise programs and the limiting sudden explosive movements (like throwing a ball for dogs). On average, weight loss in dogs delays surgery for another

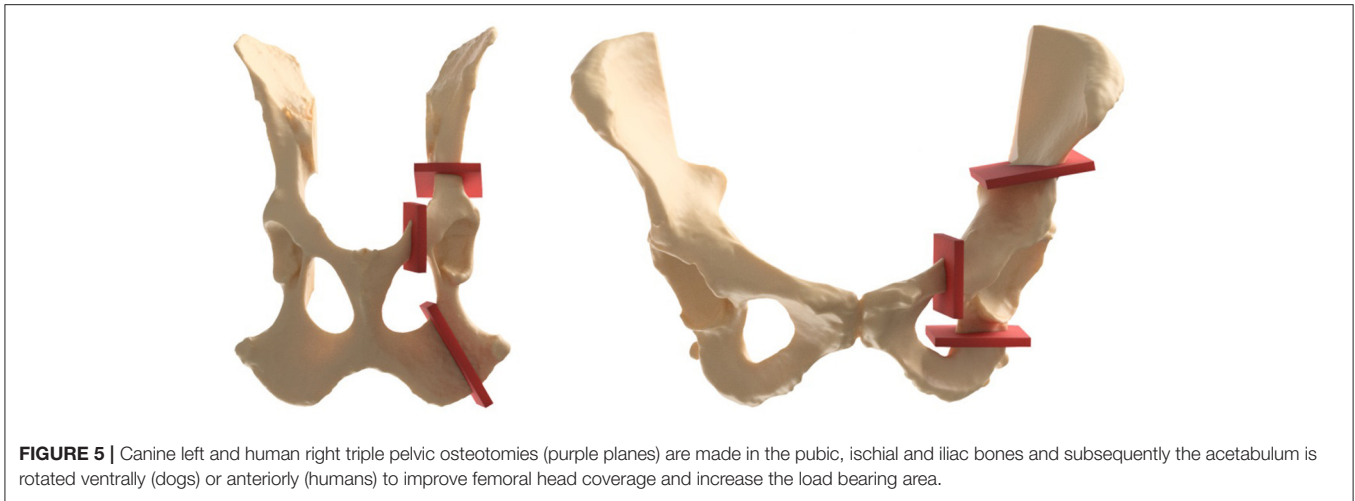
3 years (10) and in overweight dogs and humans 10% body weight reduction is associated with a relieve in symptoms and signs (14, 77). Another non-surgical intervention is the nutraceutical market, which is especially big in the veterinary market. Nutraceuticals are food additives or supplements that are purported to have a disease modifying potential in hip dysplasia and osteoarthritis, but also other conditions. An example of a nutraceutical is Polysulfated glycosaminoglycans (PSGAGs) which proposedly stimulates collagen synthesis and inhibits the breakdown of collagen (13) which may help reduce subluxation (54).

Another option for early non-surgical treatment is physiotherapy (78, 79). In both dogs and humans physiotherapy and hydrotherapy is an important component first as a conservative treatment option but also as an important aspect in post-surgical rehabilitation (78, 79).

## Late Surgical Treatment

Originally designed for humans with HD, triple pelvic osteotomy (TPO) has also become a successful procedure for dogs with HD (12, 80) (Figure 5). This surgery can be used in young dogs (1, 54, 81), but more often in adolescents (46, 82, 83) and young adults (82, 83) without or with minimal degenerative joint damage (1, 49, 54, 83). In dogs, the surgery is preferably performed before full skeletal maturity is reached, while in humans it can be used both before and after the triradiate cartilage closes (9, 83). However, humans have more early surgical treatments available (e.g., Salter & Pemberton), deferring the more invasive TPO to older patients. Over the years there have been many changes in specific surgical techniques, but the general outline of TPO remains the same. Osteotomies are made in the pubic, ischial, and iliac bones, and the acetabulum is subsequently rotated ventrally to improve femoral head coverage and increase the load bearing area (80) (Figure 5). The acetabulum is then fixated in place by plates, screws, or K-wire. Clinical reduction of lameness after TPO, and improvement in weight bearing of 86–92% is reported in dogs (75, 76, 81). The joint laxity is reduced following TPO in dogs (80, 81), but degenerative changes cannot be stopped completely (81). In humans, TPO causes a long term reduction of pain and improvement of function (84) and a (total hip free) survival of 68% after 25 years is reported. Recently, dual pelvic osteotomy (DPO) has been recommended in dogs (75, 85), it has also been described in humans (72). DPO is similar to TPO, with a faster post-operative recovery, as there is no osteotomy of the ischium and therefore no pelvic discontinuity (75, 85).

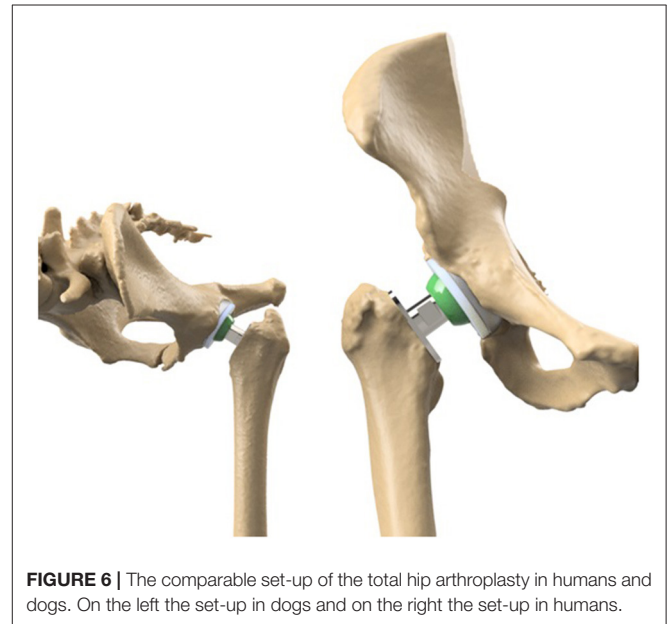
Shelf arthroplasty is a commonly used salvage procedure for HD in humans (86). It involves the placement of an autologous bone graft outside of the joint capsule superior to the acetabulum (87, 88). The graft can be impacted into the bone or be held in place by a screw (88), improving the support structure of the joint (9). Capsular metaplasia causes the improvement of the articulating surface. The improved support and improved femoral head coverage helps improve the weight bearing surface (9) and delays the progression of OA. This procedure is preferably performed in younger patients with minimal arthritic changes, however it is mostly reserved as a salvage procedure as other treatments are not eligible. The survival of the shelf



procedure can be up to 72% at 35 years of follow-up (86). A similar procedure called the biocompatible osteoconductive polymer (BOP) procedure has been described as an alternative to TPO in adolescent dogs (12, 75, 76). Instead of autologous bone graft, biocompatible osteoconductive fibers were used to increase coverage, because the fibers were expected to promote bony ingrowth (12, 75, 76). Despite that the shelf procedure was successful in humans, BOP in dogs never became a common procedure because of uncontrolled bone growth (75, 76). New procedures involving 3D-printed titanium shelves (89) or 3D-printed biodegradable magnesium phosphate shelves (90) are still being developed in dogs and when successful these procedures hopefully find their way back to the human clinic.

While being one of the most effective procedures, total hip arthroplasty (THA) in humans and dogs (12) is often postponed as the last treatment option (Figure 6). When young patients with a demanding lifestyle receive a THA they may need one or more revisions in their lifetime due to implant wear. However, every revision is more difficult to perform due to fibrosis in the perioperative area. Therefore, in humans, the need for THA is preferably postponed beyond the age of 60 to prevent revisions in the long term. Although THA has been available for dogs for three decades, it remains an expensive treatment option, especially when the owners have no insurance (49). Also, THA in humans can become technically demanding due to anatomical differences in dysplastic hips making it difficult to ream a large enough bony bed to support an acetabular cup (91). In dogs the procedure is technically demanding due to breed anatomic differences but can be used in dogs of any size or shape when aged 9 months or older (12).

It is good to note that implant improvements have benefited for cross species research. For example, due to the active nature of dogs, the THA materials demand is high and companies specializing in canine THA have benefited from the prosthetic knowledge being researched and developed for human medicine. For example, similar durable materials developed for human cups and stems are translated to the dog THA allowing dogs to perform without the need for revision beyond a decade lifetime,



with a biomechanically demanding lifestyle asking for more cyclic loading of their implants than humans. Vice versa, in dogs new products are developed e.g., to decrease stem loosening, because dogs demand immediate full weightbearing after surgery due to their non-compliance to life style restrictions. One example of a successful concept in THA surgery in dogs (Zürich cementless THA) is the immediate stem screw fixation at the medial femoral cortex instead of press fit fixation (92). Likewise, in a few years more developments might be translated back from the veterinary to the human market.

One of the least performed in humans but most commonly executed salvage procedures in dogs is the femoral head and neck excision (75, 76). The surgery is relatively easy to perform and has low costs, and is most effective in dogs with low body weight (75, 93). The removal of the femoral head and neck



leads to a fibrotic pseudoarthrosis (false joint), allowing for relative pain free movement (12, 49). Femoral head and neck excision generally has good results in relieving pain, however possible side effects are extensive rehabilitation, decreased range of motion, muscle atrophy and limping due to decreased limb length (12, 75, 76, 93). Important factors in the outcome are body size (12, 75, 76), dog temperament and activity (12, 94). This procedure performed in humans is called a “Girdle stone” procedure, but only as the last option (94).

## CONCLUSION

In this review we described the anatomy, etiology, development, diagnostics and treatment of HD in humans and dogs. Humans and dogs have similar anatomy on micro- and macroscopic levels. HD as an orthopedic condition has many overlying characteristics in humans and dogs in terms of etiology and pathogenesis. Likewise, treatment of HD shows many similarities. There is much parallel use of early and after growth (conservative) treatments and interventions. Moreover, many of the surgical treatments for HD that were developed for humans have first been tested in experimental dogs. Procedures that became successful in humans found their way to the veterinary field and are now commonly used in companion animal clinics.

## REFERENCES

- Lopez M, Schachner E. Diagnosis, prevention, and management of canine hip dysplasia: a review. *Vet Med Res Reports*. (2015) 6:181. doi: 10.2147/VMR.R.553266
- Olmstead ML, Linda LD. *Small Animal Orthopedics*. St. Louis: Mosby (1995). p. 365–8.
- Stein-Zamir C, Volovik I, Rishpon S, Sabi R. Developmental dysplasia of the hip: risk markers, clinical screening and outcome. *Pediatr Int*. (2008) 50:341–5. doi: 10.1111/j.1442-200X.2008.02575.x
- Rhodes AML, Clarke NMP. A review of environmental factors implicated in human developmental dysplasia of the hip. *J Child Orthop*. (2014) 8:375–9. doi: 10.1007/s11832-014-0615-y
- Vanden Berg-Foels WS, Todhunter RJ, Schwager SJ, Reeves AP. Effect of early postnatal body weight on femoral head ossification onset and hip osteoarthritis in a canine model of developmental dysplasia of the hip. *Pediatr Res*. (2006) 60:549–54. doi: 10.1203/01.pdr.0000243546.97830.a0
- Roberts T, McGreevy PD. Selection for breed-specific long-bodied phenotypes is associated with increased expression of canine hip dysplasia. *Vet J*. (2010) 183:266–72. doi: 10.1016/j.tvjl.2009.11.005
- Worth AJ, Bridges JP, Cave NJ, Jones G. Seasonal variation in the hip score of dogs as assessed by the New Zealand Veterinary Association hip dysplasia scheme. *N Z Vet J*. (2012) 60:110–4. doi: 10.1080/00480169.2011.636730
- Rettenmaier JL, Keller GG, Lattimer JC, Corley EA, Ellersieck MR. Prevalence of canine hip dysplasia in a veterinary teaching hospital population. *Vet Radiol Ultrasound*. (2002) 43:313–8. doi: 10.1111/j.1740-8261.2002.tb01010.x
- Kotlarsky P, Haber R, Bialik V, Eidelman M. Developmental dysplasia of the hip: what has changed in the last 20 years? *World J Orthop*. (2015) 6:886–901. doi: 10.5312/wjo.v6.i11.886
- Smith GK, Karbe GT, Agnello KA, McDonald-Lynch MB. Pathogenesis, diagnosis and control of canine hip dysplasia. In: *Veterinary Surgery: Small Animal*. 1st ed. St. Louis: Elsevier (2012). p. 824–48.
- Barr ARS, Denny HR, Gibbs DC. Clinical hip dysplasia in growing dogs: the long-term results of conservative management. *J Small Anim Pract*. (1987) 28:243–52. doi: 10.1111/j.1748-5827.1987.tb03879.x
- Anderson A. Treatment of hip dysplasia. *J Small Anim Pract*. (2011) 52:182–9. doi: 10.1111/j.1748-5827.2011.01049.x
- Kirkby KA, Lewis DD. Canine hip dysplasia: reviewing the evidence for nonsurgical management. *Vet Surg*. (2012) 41:2–9. doi: 10.1111/j.1532-950X.2011.00928.x
- Impellizzeri JA, Tetrack MA, Muir P. Effect of weight reduction on clinical signs of lameness in dogs with hip osteoarthritis. *J Am Vet Med Assoc*. (2000) 216:1089–91. doi: 10.2460/javma.2000.216.1089
- Bonneau N, Baylac M, Gagey O, Tardieu C. Functional integrative analysis of the human hip joint: the three-dimensional orientation of the acetabulum and its relation with the orientation of the femoral neck. *J Hum Evol*. (2014) 69:55–69. doi: 10.1016/j.jhevol.2013.12.013
- Hogervorst T, Bouma HW, De Vos J. Evolution of the hip and pelvis. *Acta Orthop*. (2009) 80:1–39. doi: 10.1080/17453690610046620
- Lovejoy CO. The natural history of human gait and posture. *Part 1 Spine and pelvis Gait Posture*. (2005) 21:95–112. doi: 10.1016/j.gaitpost.2004.01.001
- Gruss LT, Schmitt D. The evolution of the human pelvis: changing adaptations to bipedalism, obstetrics and thermoregulation. *Philos Trans R Soc Lond B Biol Sci*. (2015) 370:20140063. doi: 10.1098/rstb.2014.0063
- Bergmann G, Siraky J, Rohlmann A, Koelbel R. A comparison of hip joint forces in sheep, dog and man. *J Biomech*. (1984) 17:907–21. doi: 10.1016/0021-9290(84)90004-6
- Soontornvipart K, Chalayon P, Tangwongsan C. Standing analysis of healthy and abnormal canines using force platform system. In: *2013 10th International Conference on Electrical Engineering/Electronics, Computer, Telecommunications and Information Technology*. IEEE (2013) p. 1–6.
- Brookhart JM, Parmeggiani PL, Petersen WA, Stone SA. Postural Stability in the Dog. *Am J Physiol*. (1965) 208:1047–57. doi: 10.1152/ajplegacy.1965.208.6.1047
- Nunamaker DM, Blauner PD. *Normal and Abnormal Gait*. *Textb Small Anim Orthop*. Ithaca, NY: International Veterinary Information Services (IVIS) (1985).
- Byrne DP, Mulhall KJ, Baker JF. Anatomy & Biomechanics of the Hip. *Open Sport Med J*. (2010) (4):51–7. doi: 10.2174/1874387001004010051

We suggest that further exchange between research on HD in humans and dogs can be beneficial for the treatment of HD in humans and dogs.

## AUTHOR CONTRIBUTIONS

BW, BM, RS, HW, and KW: conceptualized the study. KW, MM, and NH: collected the data. KW, MT, MM, NH, and RS: analyzed the data. HW, BM, MT, and BW: supervised the project. KW, MT, RS, NH, MM, HW, BM, and BW: wrote, edited and reviewed the paper. All authors have read and approved the final submitted manuscript.

## FUNDING

KW and HW report a Governmental research grant from Interreg VA Flanders—The Netherlands program, during the conduct of the study; KW and HW report grants from the Smart industry project 15479 funded through governmental grant by NWO domain TTW, during the conduct of the study; MT, HW, and BM report funding from the Dutch Arthritis Society (LLP12/22). The funding sources played no role in the study design, data analysis and interpretation, nor drafting of the manuscript or the decision to submit it for publication.

24. Pearce AI, Richards RG, Milz S, Schneider E, Pearce SG. Animal models for implant biomaterial research in bone: a review. *Eur Cell Mater.* (2007) 13:1–10. doi: 10.22203/eCM.v013a01
25. Eitel F, Klapp F, Jacobson W, Schweiberer L. Bone regeneration in animals and in man. A contribution to understanding the relative value of animal experiments to human pathophysiology. *Arch Orthop Trauma Surgery.* (1981) 99:59–64. doi: 10.1007/BF00400911
26. Rhinelander FW, Nelson CL, Stewart RD, Stewart CL. Experimental reaming of the proximal femur and acrylic cement implantation: vascular and histologic effects. *Clin Orthop Relat Res.* (1979) (141):74–89. doi: 10.1097/00003086-197906000-00009
27. Goel VK, Drinker H, Panjabi MM, Strongwater A. Selection of an animal model for implant fixation studies: anatomical aspects. *Yale J Biol Med.* (1982) 55:113–22.
28. Aerssens J, Boonen S, Lowet G, Dequeker J. Interspecies differences in bone composition, density, and quality: potential implications for in vivo bone research. *Endocrinology.* (1998) 139:663–70. doi: 10.1210/endo.139.2.5751
29. Ibrahim T, Riaz M, Hegazy A. The prevalence of developmental dysplasia of the hip in idiopathic clubfoot: a systematic review and meta-analysis. *Int Orthop.* (2015) 39:1371–8. doi: 10.1007/s00264-015-2757-z
30. Sankar WN, Neuburger CO, Moseley CF. Femoral anteversion in developmental dysplasia of the hip. *J Pediatr Orthop.* (2009) 29:885–8. doi: 10.1097/BPO.0b013e3181c1e961
31. Sugano N, Noble PC, Kamaric E, Salama JK, Ochi T, Tullos HS. The morphology of the femur in developmental dysplasia of the hip. *J Bone Joint Surg Br.* (1998) 80:711–9. doi: 10.1302/0301-620X.80B4.0800711
32. Krontveit RI, Nødtvedt A, Sævik BK, Ropstad E, Skogmo HK, Trangerud C, et al. Prospective study on canine hip dysplasia and growth in a cohort of four large breeds in Norway (1998–2001). *Prev Vet Med.* (2010) 97:252–63. doi: 10.1016/j.prevetmed.2010.09.015
33. Kealy RD, Olsson SE, Monti KL, Lawler DF, Biery DN, Helms RW, et al. Effects of limited food consumption on the incidence of hip dysplasia in growing dogs. *Journal-American Vet Med Assoc.* (1992) 201:857.
34. Karlson EW, Mandl LA, Aweh GN, Sangha O, Liang MH, Grodstein F. Total hip replacement due to osteoarthritis: the importance of age, obesity, and other modifiable risk factors. *Am J Med.* (2003) 114:93–8. doi: 10.1016/S0002-9343(02)01447-X
35. Smith GK, Paster ER, Powers MY, Lawler DF, Biery DN, Shofer FS, et al. Lifelong diet restriction and radiographic evidence of osteoarthritis of the hip joint in dogs. *J Am Vet Med Assoc.* (2006) 229:690–3. doi: 10.2460/javma.229.5.690
36. Atalar H, Gunay C, Yavuz OY, Camurdan AD, Uras I, Eren A. Maternal height and infant body mass index are possible risk factors for developmental dysplasia of the hip in female infants. *Acta Med Okayama.* (2015) 69:349–51.
37. Steinetz BG, Williams AJ, Lust G, Schwabe C, Büllsbach EE, Goldsmith LT. Transmission of relaxin and estrogens to suckling canine pups via milk and possible association with hip joint laxity. *Am J Vet Res.* (2008) 69:59–67. doi: 10.2460/ajvr.69.1.59
38. Flückiger MA, Steffen F, Hässig M, Morgan JP. Asymmetrical lumbosacral transitional vertebrae in dogs may promote asymmetrical hip joint development. *Vet Comp Orthop Traumatol.* (2017) 30:137–42. doi: 10.3415/VCOT-16-05-0072
39. Schwend RM, Shaw BA, Segal LS. Evaluation and treatment of developmental hip dysplasia in the newborn and infant. *Pediatr Clin North Am.* (2014) 61:1095–107. doi: 10.1016/j.pcl.2014.08.008
40. Kutlu A, Memik R, Mutlu M, Kutlu R, Arslan A. Congenital dislocation of the hip and its relation to swaddling used in Turkey. *J Pediatr Orthop.* (1992) 12:598–602. doi: 10.1097/01241398-199209000-00006
41. De Pellegrin M, Moharamzadeh D. Developmental dysplasia of the hip in twins: the importance of mechanical factors in the etiology of DDH. *J Pediatr Orthop.* (2010) 30:774–8. doi: 10.1097/BPO.0b013e3181fc35c0
42. Manoukian D, Rehm A. Oligohydramnios: Should it be considered a risk factor for developmental dysplasia of the hip? *J Pediatr Orthop Part B.* (2019) 28:442–5. doi: 10.1097/BPB.0000000000000624
43. Ford CA, Nowlan NC, Thomopoulos S, Killian ML. Effects of imbalanced muscle loading on hip joint development and maturation. *J Orthop Res.* (2016) 35:1128–36 doi: 10.1002/jor.23361
44. Klisic PJ. Congenital dislocation of the hip—a misleading term: brief report. *J Bone Joint Surg Br.* (1989) 71:136. doi: 10.1302/0301-620X.71B1.2914985
45. Sackers R, Pollet V. The natural history of abnormal ultrasound findings in hips of infants under six months of age. *J Child Orthop.* (2018) 12:302–7. doi: 10.1302/1863-2548.12.180056
46. Wenger DR, Bomar JD. Human hip dysplasia: evolution of current treatment concepts. *J Orthop Sci.* (2003) 8:264–71. doi: 10.1007/s007760300046
47. Tobias KM, Johnston SA. Veterinary surgery: small animal-E-BOOK: 2-volume set. *Elsevier Health Sciences.* (2013).
48. Read RA. Conservative management of juvenile canine hip dysplasia. *Aust Vet J.* (2000) 78:818–9. doi: 10.1111/j.1751-0813.2000.tb10494.x
49. Rawson EA, Aronsohn MG, Burk RL. Simultaneous bilateral femoral head and neck osteotomy for the treatment of canine hip dysplasia. *J Am Anim Hosp Assoc.* (2005) 41:166–70. doi: 10.5326/0410166
50. Gatineau M, Dupuis J, Beaugard G, Charette B, Breton L, Beauchamp G, et al. Palpation and dorsal acetabular rim radiographic projection for early detection of canine hip dysplasia: a prospective study. *Vet Surg.* (2012) 41:42–53. doi: 10.1111/j.1532-950X.2011.00926.x
51. Shorter D, Hong T, Osborn DA. Screening programmes for developmental dysplasia of the hip in newborn infants. *Cochrane database Syst Rev.* (2011) (9):CD004595. doi: 10.1002/14651858.CD004595.pub2
52. Kang MS, Han GW, Kam M, Park S-S. Clinical significance of asymmetric skin folds in the medial thigh for the infantile screening of developmental dysplasia of the hip. *Pediatr Neonatol.* (2019) 60:570–6. doi: 10.1016/j.pedneo.2019.02.004
53. Kamath SU, Bennet GC. Does developmental dysplasia of the hip cause a delay in walking? *J Pediatr Orthop.* (2004) 24:265. doi: 10.1097/01241398-200405000-00005
54. Ginja MMD, Silvestre AM, Gonzalo-Orden JM, Ferreira AJA. Diagnosis, genetic control and preventive management of canine hip dysplasia: a review. *Vet J.* (2010) 184:269–76. doi: 10.1016/j.tvjl.2009.04.009
55. Hielm-Björkman AK, Kuusela E, Liman A, Markkola A, Saarto E, Huttunen P, et al. Evaluation of methods for assessment of pain associated with chronic osteoarthritis in dogs. *J Am Vet Med Assoc.* (2003) 222:1552–8. doi: 10.2460/javma.2003.222.1552
56. Kyriazis A, Prassinou NN. Canine hip dysplasia: part i: aetiopathogenesis & diagnostic approach. *Hell J Companion Anim Med.* (2016) 5:22–47.
57. Herring JA. *Tachdjian's Pediatric Orthopaedics: From the Texas Scottish Rite Hospital for Children E-Book.* Philadelphia, PA: Elsevier (2020).
58. Ginja MMD, Ferreira AJ, Jesus SS, Melo-Pinto P, Bulas-Cruz J, Orden MA, et al. Comparison of clinical, radiographic, computed tomographic, and magnetic resonance imaging methods for early prediction of canine hip laxity and dysplasia. *Vet Radiol Ultrasound.* (2009) 50:135–43. doi: 10.1111/j.1740-8261.2009.01506.x
59. Wiberg G. Studies on dysplastic acetabula and congenital subluxation of the hip joint: with special reference to the complication of osteoarthritis. *Acta Chir Scand.* (1939) 83:53–68.
60. Storer SK, Skaggs DL. Developmental dysplasia of the hip. *Am Fam Physician.* (2006) 74:1310–6.
61. Quader N, Schaeffer EK, Hodgson AJ, Abugharbieh R, Mulpuri K, A. systematic review and meta-analysis on the reproducibility of ultrasound-based metrics for assessing developmental dysplasia of the hip. *J Pediatr Orthop.* (2018) 38:e305–11. doi: 10.1097/BPO.0000000000001179
62. Murphy SB, Ganz R, Müller ME. The prognosis in untreated dysplasia of the hip. A study of radiographic factors that predict the outcome. *J Bone Jt Surg Am.* (1995) 77:985–9. doi: 10.2106/00004623-199507000-00002
63. Murphy SB, Kijewski PK, Millis MB, Harless A. Acetabular dysplasia in the adolescent and young adult. *Clin Orthop Relat Res.* (1990) 261:214–23. doi: 10.1097/00003086-199012000-00023
64. Werner CML, Ramseier LE, Ruckstuhl T, Stromberg J, Copeland CE, Turen CH, et al. Normal values of Wiberg's lateral center-edge angle and Lequesne's acetabular index—a coxometric update. *Skeletal Radiol.* (2012) 41:1273–8. doi: 10.1007/s00256-012-1420-7
65. Monazzam S, Bomar JD, Cidambi K, Kruk P, Hosalkar H. Lateral center-edge angle on conventional radiography and computed tomography. *Clin Orthop Relat Res.* (2013) 471:2233–7. doi: 10.1007/s11999-012-2651-6
66. Vezzoni A, Dravelli G, Vezzoni L, De Lorenzi M, Corbari A, Cirila A, et al. Comparison of conservative management and juvenile pubic symphysiodesis

- in the early treatment of canine hip dysplasia. *Vet Comp Orthop Traumatol.* (2008) 21:267–79. doi: 10.1055/s-0037-1617372
67. Parvaresh KC, Pennock AT, Bomar JD, Wenger DR, Upasani VV. Analysis of acetabular ossification from the triradiate cartilage and secondary centers. *J Pediatr Orthop.* (2018) 38:e145–50. doi: 10.1097/BPO.0000000000001120
  68. Tibrewal S, Gulati V, Ramachandran M. The Pavlik method: a systematic review of current concepts. *J Pediatr Orthop B.* (2013) 22:516–20. doi: 10.1097/BPB.0b013e328365760e
  69. Cooper AP, Doddabasappa SN, Mulpuri K. Evidence-based management of developmental dysplasia of the hip. *Orthop Clin North Am.* (2014) 45:341–54. doi: 10.1016/j.jocl.2014.03.005
  70. López-Carreño E, Carillo H, Gutiérrez M. Dega vs. Salter osteotomy for the treatment of developmental dysplasia of the hip. *J Pediatr Orthop B.* (2008) 17:213–21. doi: 10.1097/BPB.0b013e32830850eb
  71. Castañeda P, Vidal-Ruiz C, Méndez A, Salazar DP, Torres A. How often does femoroacetabular impingement occur after an innominate osteotomy for acetabular dysplasia? *Clin Orthop Relat Res.* (2016) 474:1209–15. doi: 10.1007/s11999-016-4721-7
  72. Sales de Gauzy J. Pelvic reorientation osteotomies and acetabuloplasties in children Surgical technique. *Orthop Traumatol Surg Res.* (2010) 96:793–9. doi: 10.1016/j.otsr.2010.07.004
  73. Wang CW, Wang TM, Wu KW, Huang SC, Kuo KN. The comparative, long-term effect of the salter osteotomy and pemberton acetabuloplasty on pelvic height, scoliosis and functional outcome. *Bone Joint J.* (2016) 98:1145–50. doi: 10.1302/0301-620X.98B8.37215
  74. Wang C-W, Wu K-W, Wang T-M, Huang S-C, Kuo KN. Comparison of acetabular anterior coverage after salter osteotomy and pemberton acetabuloplasty: a long-term followup. *Clin Orthop Relat Res.* (2014) 472:1001–9. doi: 10.1007/s11999-013-3319-6
  75. Raghuvir HB, Shivrajsinh KJ, Dipak NS, Harit DB, Chirag AB, Naresh HK. Treatment of canine hip dysplasia: a review. *J Anim Sci Adv.* (2013) 3:589–97.
  76. Remedios AM, Fries CL. Treatment of canine hip dysplasia: a review. *Can Vet J = La Rev vétérinaire Can.* (1995) 36:503–9.
  77. Bliddal H, Leeds AR, Christensen R. Osteoarthritis, obesity and weight loss: evidence, hypotheses and horizons - a scoping review. *Obes Rev.* (2014) 15:578–86. doi: 10.1111/obr.12173
  78. Bockstahler B, Levine D, Maierl J, Millis D, Wittek K. *Essential Facts of Physical Medicine, Rehabilitation and Sports Medicine in Companion Animals.* Babenhausen: VBS GmbH (2019).
  79. Retchford TH, Crossley KM, Grimaldi A, Kemp JL, Cowan SM. Can local muscles augment stability in the hip? A narrative literature review. *J Musculoskelet Neuronal Interact.* (2013) 13:1–12.
  80. Hara Y, Harada Y, Fujita Y, Taoda T, Nezu Y, Yamaguchi S, et al. Changes of hip joint congruity after triple pelvic osteotomy in the dog with hip dysplasia. *J Vet Med Sci.* (2002) 64:933–6. doi: 10.1292/jvms.64.933
  81. McLaughlin RM, Miller CW, Taves CL, Hearn TC, Palmer NC, Anderson GI. Force plate analysis of triple pelvic osteotomy for the treatment of canine hip dysplasia. *Vet Surg.* (1991) 20:291–7. doi: 10.1111/j.1532-950X.1991.tb01270.x
  82. de Kleuver M, Kapitein PJ, Kooijman MA, van Limbeek J, Pavlov PW, Veth RP. Acetabular coverage of the femoral head after triple pelvic osteotomy: no relation to outcome in 51 hips followed for 8–15 years. *Acta Orthop Scand.* (1999) 70:583–8. doi: 10.3109/17453679908997846
  83. Mimura T, Mori K, Kawasaki T, Imai S, Matsusue Y. Triple pelvic osteotomy: Report of our mid-term results and review of literature. *World J Orthop.* (2014) 5:14–22. doi: 10.5312/wjo.v5.i1.14
  84. van Stralen RA, van Hellemond GG, Ramrattan NN, de Visser E, de Kleuver M. Can a triple pelvic osteotomy for adult symptomatic hip dysplasia provide relief of symptoms for 25 years? *Clin Orthop Relat Res.* (2013) 471:584–90. doi: 10.1007/s11999-012-2701-0
  85. Vezzoni A, Boiocchi S, Vezzoni L, Vanelli AB, Bronzo V. Double pelvic osteotomy for the treatment of hip dysplasia in young dogs. *Vet Comp Orthop Traumatol.* (2010) 23:444–52. doi: 10.3415/VCOT-10-03-0034
  86. Willemsen K, Doelman CJ, Sam ASY, Seevinck PR, Sakkers RJB, Weinans H, et al. Long-term outcomes of the hip shelf arthroplasty in adolescents and adults with residual hip dysplasia: a systematic review. *Acta Orthop.* (2020) 91:383–9. doi: 10.1080/17453674.2020.1747210
  87. Migaud H, Chantelot C, Giraud F, Fontaine C, Duquenooy A. Long-term survivorship of hip shelf arthroplasty and Chiari osteotomy in adults. *Clin Orthop Relat Res.* (2004) (418):81–6. doi: 10.1097/00003086-200401000-00014
  88. Bartoníček J, Vávra J, Chochola A. Bosworth hip shelf arthroplasty in adult dysplastic hips: ten to twenty three year results. *Int Orthop.* (2012) 36:2425–31. doi: 10.1007/s00264-012-1665-8
  89. Willemsen K, Tryfonidou M, Sakkers R, Castelein RM, Zadpoor AA, Seevinck P, et al. Patient-specific 3D-printed shelf implant for the treatment of hip dysplasia: Anatomical and biomechanical outcomes in a canine model. *J Orthop Res.* (2021). doi: 10.1002/jor.25133
  90. Golafshan N, Willemsen K, Kadumudi FB, Vorndran E, Dolatshahi-Pirouz A, Weinans H, et al. 3D-printed regenerative magnesium phosphate implant ensures stability and restoration of hip dysplasia. *Adv Health Mater.* 10e101051. doi: 10.1002/adhm.202101051
  91. Bicanic G, Barbaric K, Bohacek I, Aljinovic A, Delimar D. Current concept in dysplastic hip arthroplasty: Techniques for acetabular and femoral reconstruction. *World J Orthop.* (2014) 5:412–24. doi: 10.5312/wjo.v5.i4.412
  92. Vezzoni L, Vezzoni A, Boudrieau RJ. Long-term outcome of Zürich cementless total hip arthroplasty in 439 cases. *Vet Surg.* (2015) 44:921–9. doi: 10.1111/vsu.12371
  93. Off W, Matis U. Excision arthroplasty of the hip joint in dogs and cats. clinical, radiographic, and gait analysis findings from the department of surgery, veterinary faculty of the ludwig-maximilians-university of munich, germany. 1997. *Vet Comp Orthop Traumatol.* (2010) 23:297–305.
  94. Olsson SE, Figarola F, Suzuki K. Femoral head excision arthroplasty. A salvage operation in severe hip dysplasia in dogs. *Clin Orthop Relat Res.* (1969) 62:104–12. doi: 10.1097/00003086-196901000-00013
- Conflict of Interest:** The authors declare that the research was conducted in the absence of any commercial or financial relationships that could be construed as a potential conflict of interest.
- Publisher's Note:** All claims expressed in this article are solely those of the authors and do not necessarily represent those of their affiliated organizations, or those of the publisher, the editors and the reviewers. Any product that may be evaluated in this article, or claim that may be made by its manufacturer, is not guaranteed or endorsed by the publisher.
- Copyright © 2021 Willemsen, Möring, Harlianto, Tryfonidou, van der Wal, Weinans, Meij and Sakkers. This is an open-access article distributed under the terms of the Creative Commons Attribution License (CC BY). The use, distribution or reproduction in other forums is permitted, provided the original author(s) and the copyright owner(s) are credited and that the original publication in this journal is cited, in accordance with accepted academic practice. No use, distribution or reproduction is permitted which does not comply with these terms.