

materiality

nonhuman

infrastructure

system

value

architecture

consumerism

Society

textile

things

MATTER

NON HUMAN AGENCY

MATERIAL CULTURES

NON HUMAN AGENCY

SUSTAINABILITY

NATURE INSTABILITY

PURITY / DIRT

SOCIAL VALUES

URBAN WASTELANDS

EPIGENETIC TERRITORY

SYSTEMS

Thompson & Reno Rubbish theory: the creation and destruction of value (2017)

SOCIAL / POLITICAL / ECONOMIC DIMENSION OF WASTE

RECYCLING

WASTE / VALUE SYSTEM

HUMAN / NON HUMAN RELATIONSHIP

WASTE SYSTEMS

WASTE MANAGEMENT

NETWORKED INFRASTRUCTURES

ENVIRONMENT

URBAN MANUFACTURING

FAST-FASHION

SUSTAINABILITY

BEYOND SUSTAINABILITY

CONSUMPTION SPACE

CONSUMERISM

CONSUMPTION SPACE

Corrigan The sociology of consumption: an introduction (1997)

Crowe The geographies of fashion: consumption, space, and value (2017)

Blühdorn Post-consumism post-growth post-consumerism? (2017)

Latour Facing gaia: eight lectures on the new climatic regime (2017)

Brooks Clothing poverty: the hidden world of fast fashion and second-hand clothes (2021)

Hill Clothes of the Future: The Secondary Cities of Making (2020)

Latour Facing gaia: eight lectures on the new climatic regime (2017)

Time of waste (2009)

Libiron & Lepawsky Discard studies: wasting, systems, and power (2022)

Graham & Marvin Splintering urbanism: networked infrastructures, technological mobilities and the urban condition (2002)

Gandy Materiality: Aesthetics, Ecology, and Urban Wastelands (2013)

Sheppard From site to territory (2013)

Douglas Purity and danger: an analysis of concepts of pollution and taboo (2015)

Latour Facing gaia: eight lectures on the new climatic regime (2017)

Bennett Vibrant matter: a political ecology of things (2010)

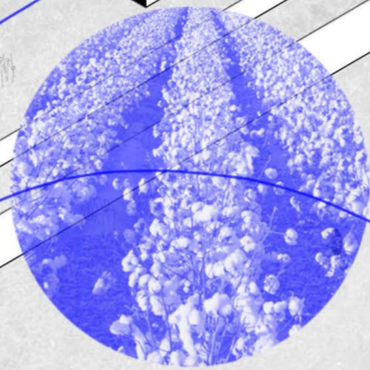
Ingold Toward an ecology of materials (2012)

reclaiming the site

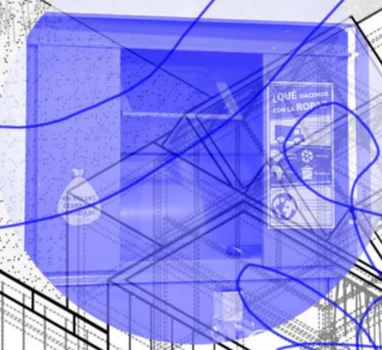


WE HAVE ENOUGH TRASH

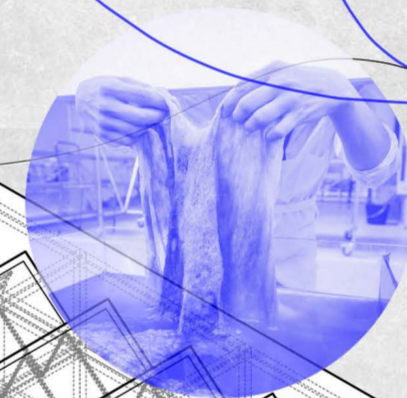
rewilding



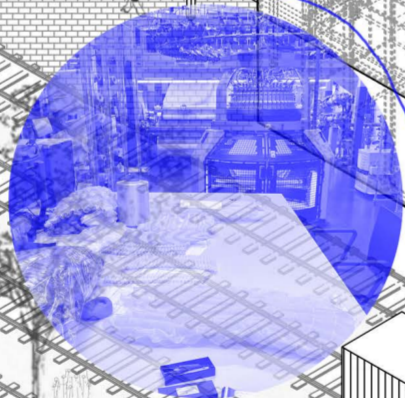
recycling



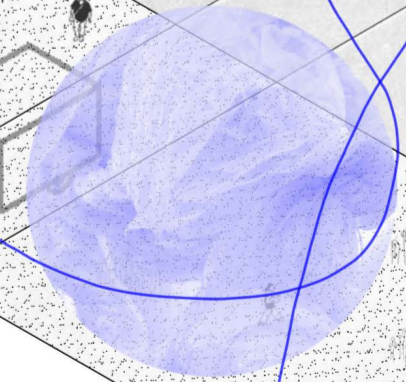
new technologies / materials



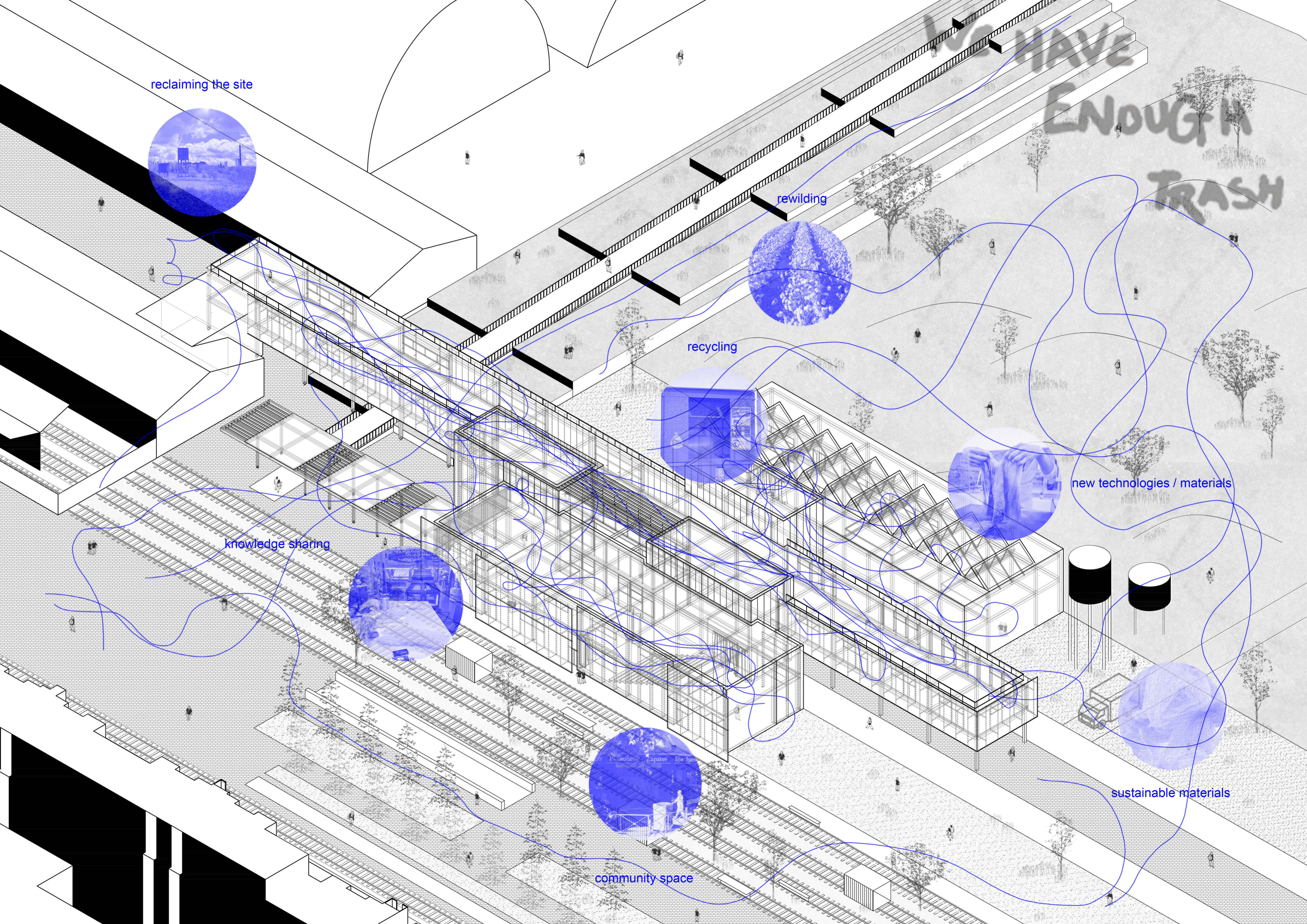
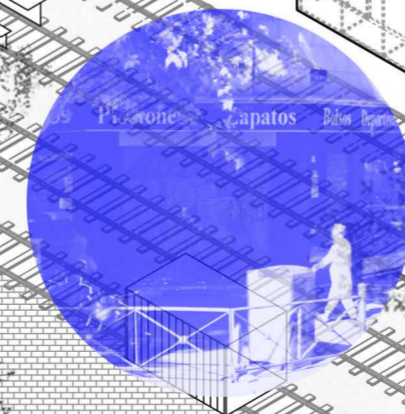
knowledge sharing

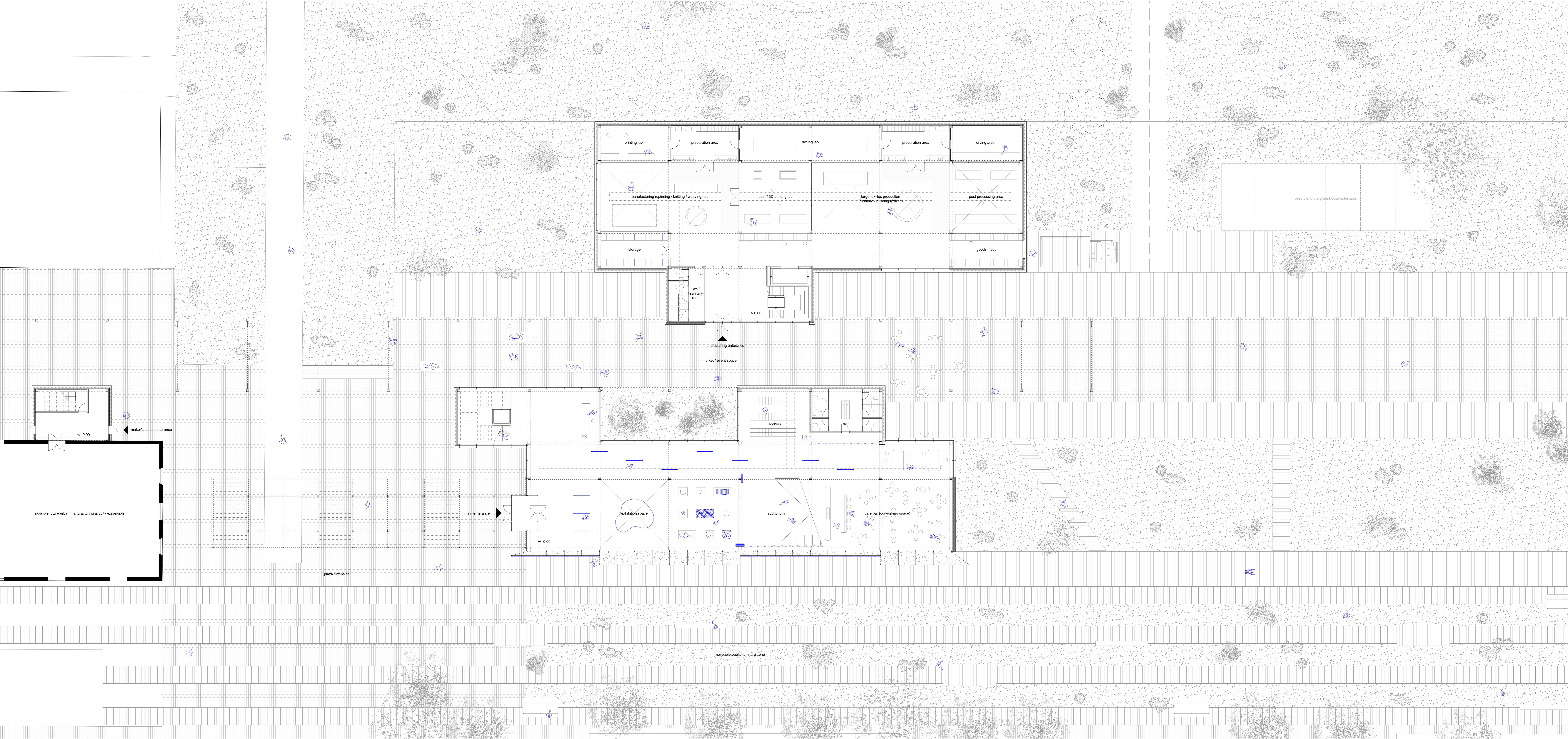


sustainable materials



community space





printing lab

preparation area

dyeing lab

preparation area

dyeing area

manufacturing (spinning / knitting / weaving) lab

laser / 3D printing lab

large textiles production (furniture / banking textiles)

post processing area

storage

goods input

wc / sanitary room

+/- 0.00

manufacturing entrance

market / event space

info

lockers

wc

main entrance

exhibition space

auditorium

cafe bar (co-working space)

+/- 0.00

maker's space entrance

+/- 0.00

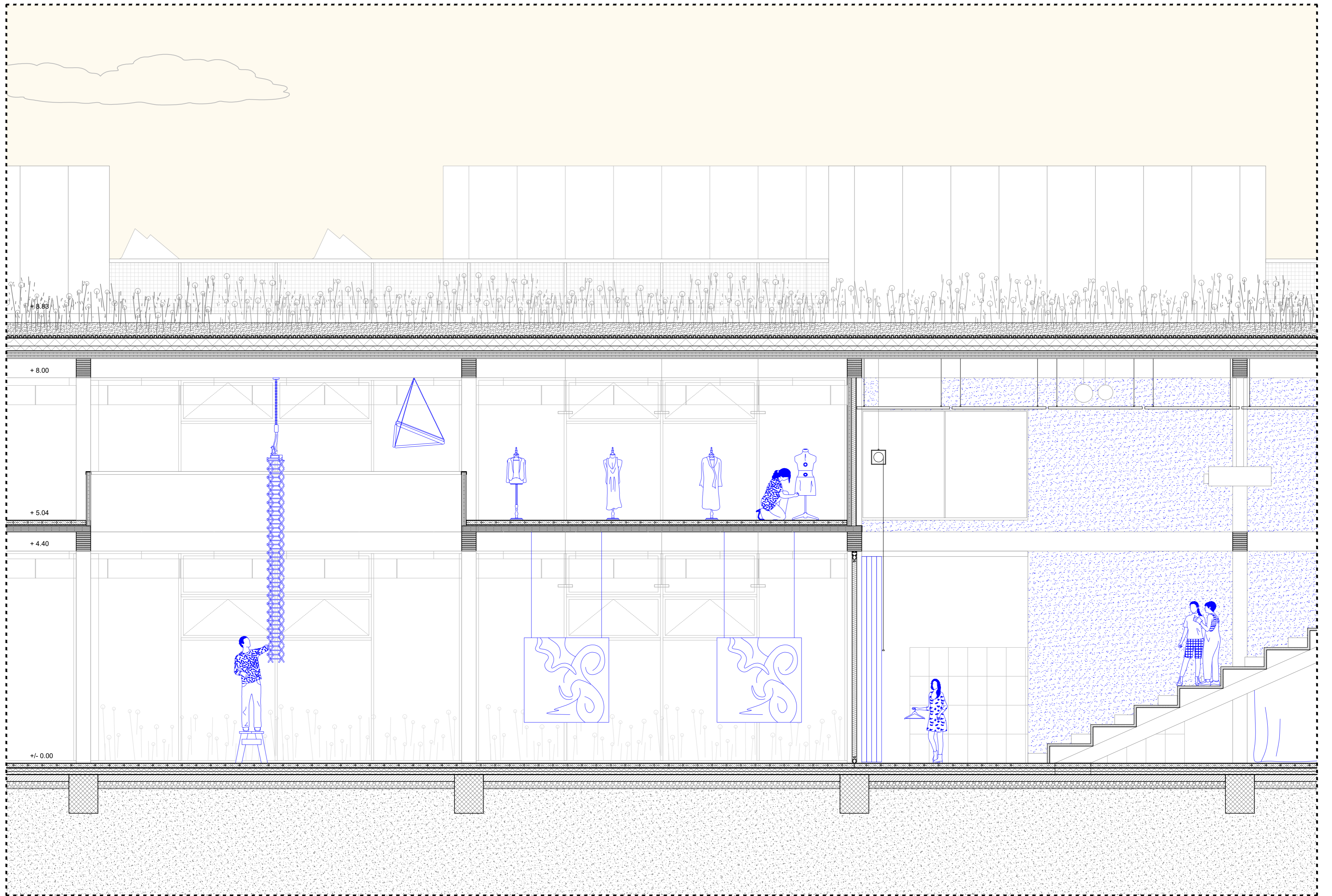
possible future urban manufacturing activity expansion

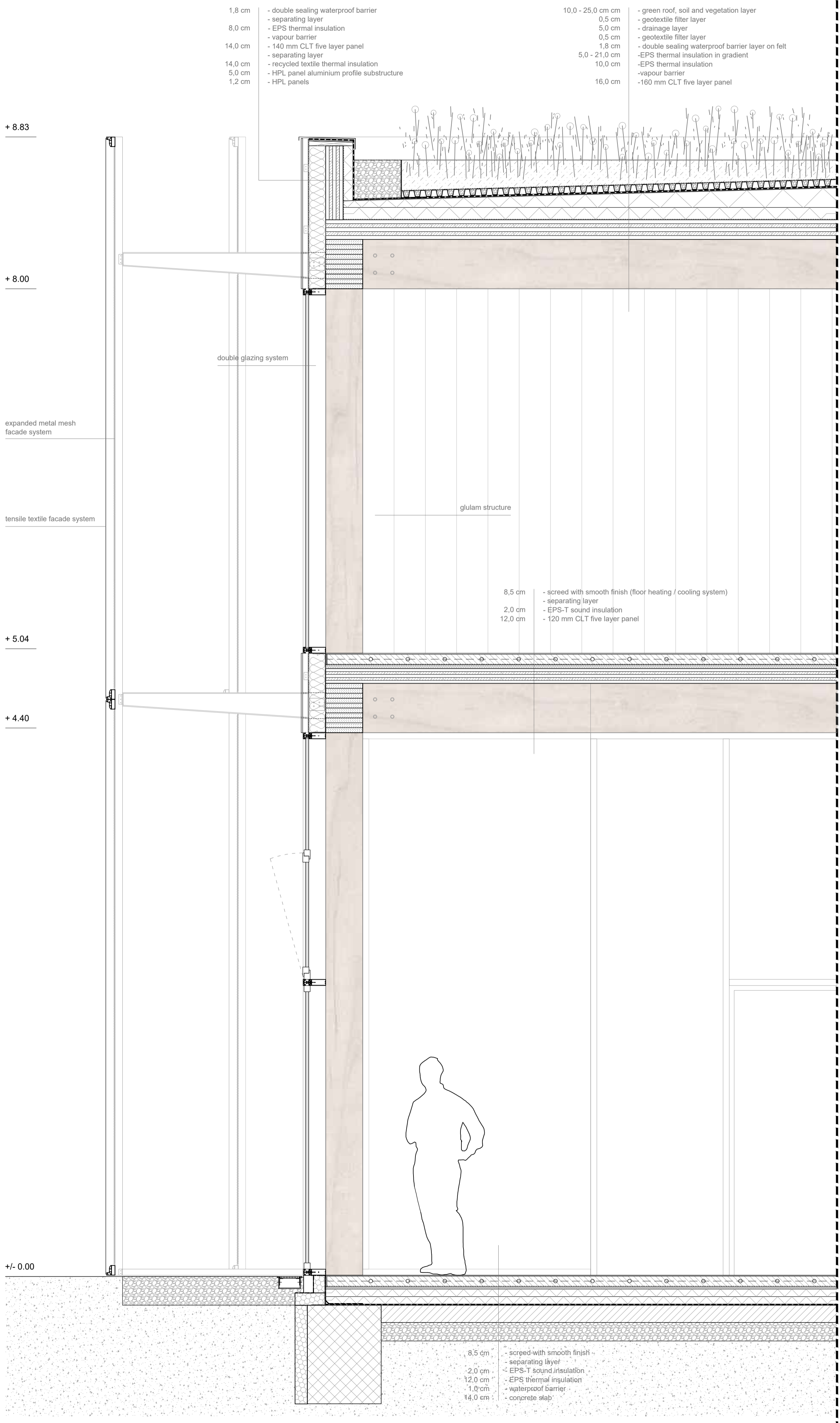
possible future greenhouse extension

plaza extension

movable public furniture zone







- 1,8 cm - double sealing waterproof barrier
- separating layer
- 8,0 cm - EPS thermal insulation
- vapour barrier
- 14,0 cm - 140 mm CLT five layer panel
- separating layer
- 14,0 cm - recycled textile thermal insulation
- 5,0 cm - HPL panel aluminium profile substructure
- 1,2 cm - HPL panels

- 10,0 - 25,0 cm cm - green roof, soil and vegetation layer
- 0,5 cm - geotextile filter layer
- 5,0 cm - drainage layer
- 0,5 cm - geotextile filter layer
- 1,8 cm - double sealing waterproof barrier layer on felt
- 5,0 - 21,0 cm - EPS thermal insulation in gradient
- 10,0 cm - EPS thermal insulation
- vapour barrier
- 16,0 cm - 160 mm CLT five layer panel

+ 8.83

+ 8.00

expanded metal mesh facade system

tensile textile facade system

+ 5.04

+ 4.40

+/- 0.00

double glazing system

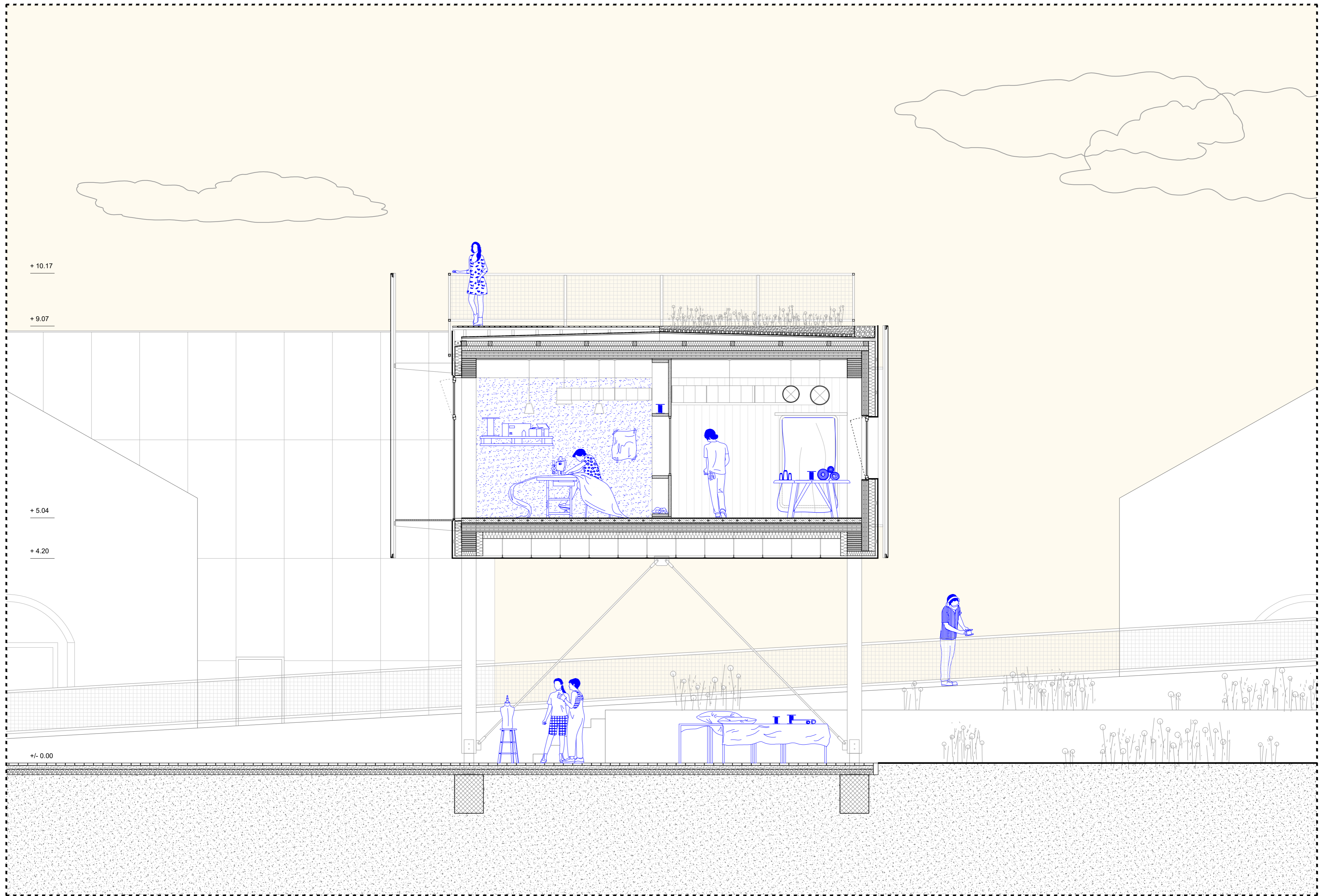
glulam structure

- 8,5 cm - screed with smooth finish (floor heating / cooling system)
- separating layer
- 2,0 cm - EPS-T sound insulation
- 12,0 cm - 120 mm CLT five layer panel

- 8,5 cm - screed with smooth finish
- separating layer
- 2,0 cm - EPS-T sound insulation
- 12,0 cm - EPS thermal insulation
- 1,0 cm - waterproof barrier
- 14,0 cm - concrete slab









+ 10.17

+ 9.07

+ 5.04

+ 4.20

+/- 0.00

- 2,5 cm - wood decking
- 5,0 cm - wooden battens as decking substructure
- 4,0 - 15,0 cm - substructure elements with changeable height
- synthetic waterproof barrier on felt
- 1,8 cm - OSB board on falls
- 5,0 - 16,0 cm - ventilation layer / wooden battens on falls
- breathable waterproof barrier
- 10,0 + 10,0 cm - recycled textile thermal insulation in two layers with wooden substructure
- 16,0 cm - 160 mm CLT five layer panel

double glazing system

artificial ventilation system with integrated humidity control

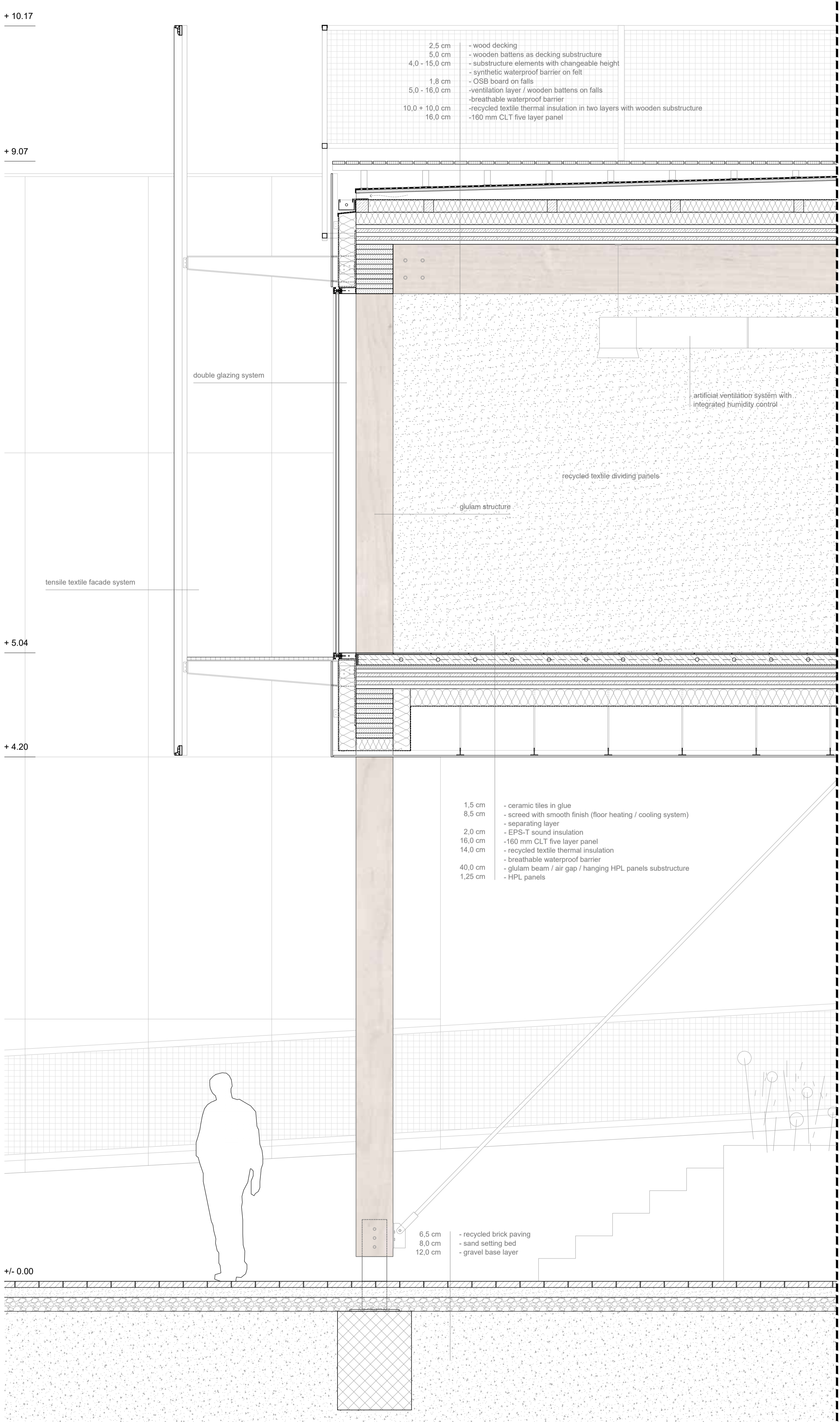
recycled textile dividing panels

glulam structure

tensile textile facade system

- 1,5 cm - ceramic tiles in glue
- 8,5 cm - screed with smooth finish (floor heating / cooling system)
- separating layer
- 2,0 cm - EPS-T sound insulation
- 16,0 cm - 160 mm CLT five layer panel
- 14,0 cm - recycled textile thermal insulation
- breathable waterproof barrier
- 40,0 cm - glulam beam / air gap / hanging HPL panels substructure
- 1,25 cm - HPL panels

- 6,5 cm - recycled brick paving
- 8,0 cm - sand setting bed
- 12,0 cm - gravel base layer



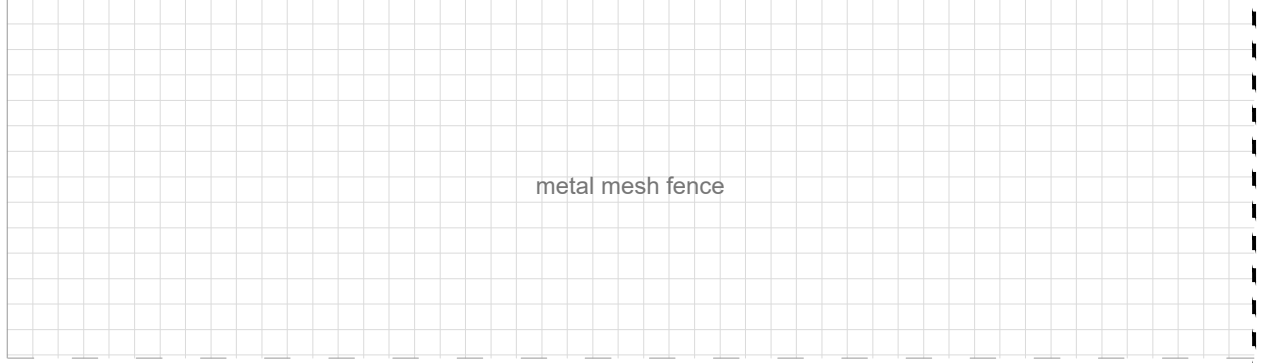
AERO W aluminium profile



aluminium profiles (4x4cm)



metal mesh fence



facade textile international
tensile textile facade system

composite membrane (polyester textile
base + resistance coatings + fibreglass)

aluminium vertical profile HPL facade panel substructure

mesh for insect/bird protection

aluminium profiles (4x4cm)

HPL facade panels

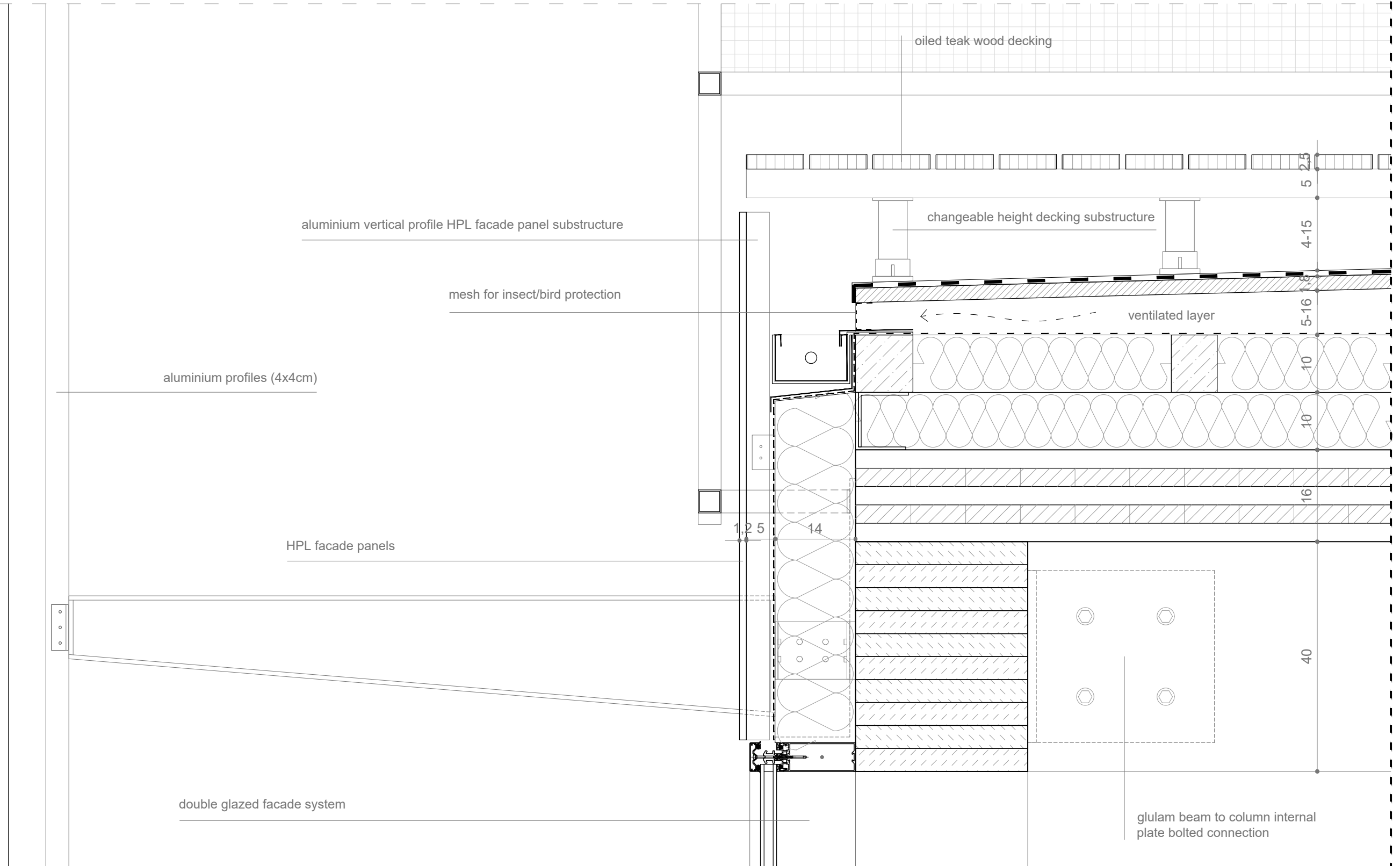
double glazed facade system

oiled teak wood decking

changeable height decking substructure

ventilated layer

glulam beam to column internal
plate bolted connection



40

16

10

10

5

2.5

1,2 5

14

facade textile international
tensile textile facade system

composite membrane (polyester textile
base + resistance coatings + fibreglass)

double glazed facade system

aluminium profiles (4x4cm)

expanded metal mesh

recycled textile insulation

AERO W aluminium profile

floor heating / cooling system

ceramic tiles in glue

EPS-T sound insulation

