

*juxtaposed interiors*

# *INTRO*



*enclosure within a world*



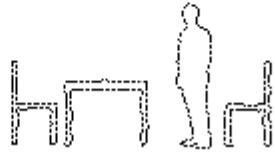




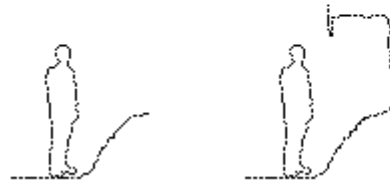




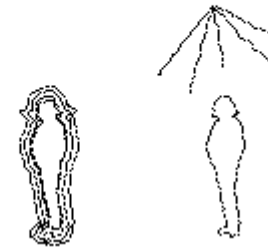
*landscape interiority*



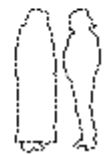
*portable interiority*



*icy interiority*



*thermal interiority*



*satorial interiority*



*thermal interiority*



*architectural interiority*



*psychological interiority*



# *taxonomy*





*public space*





*What do they mean?*



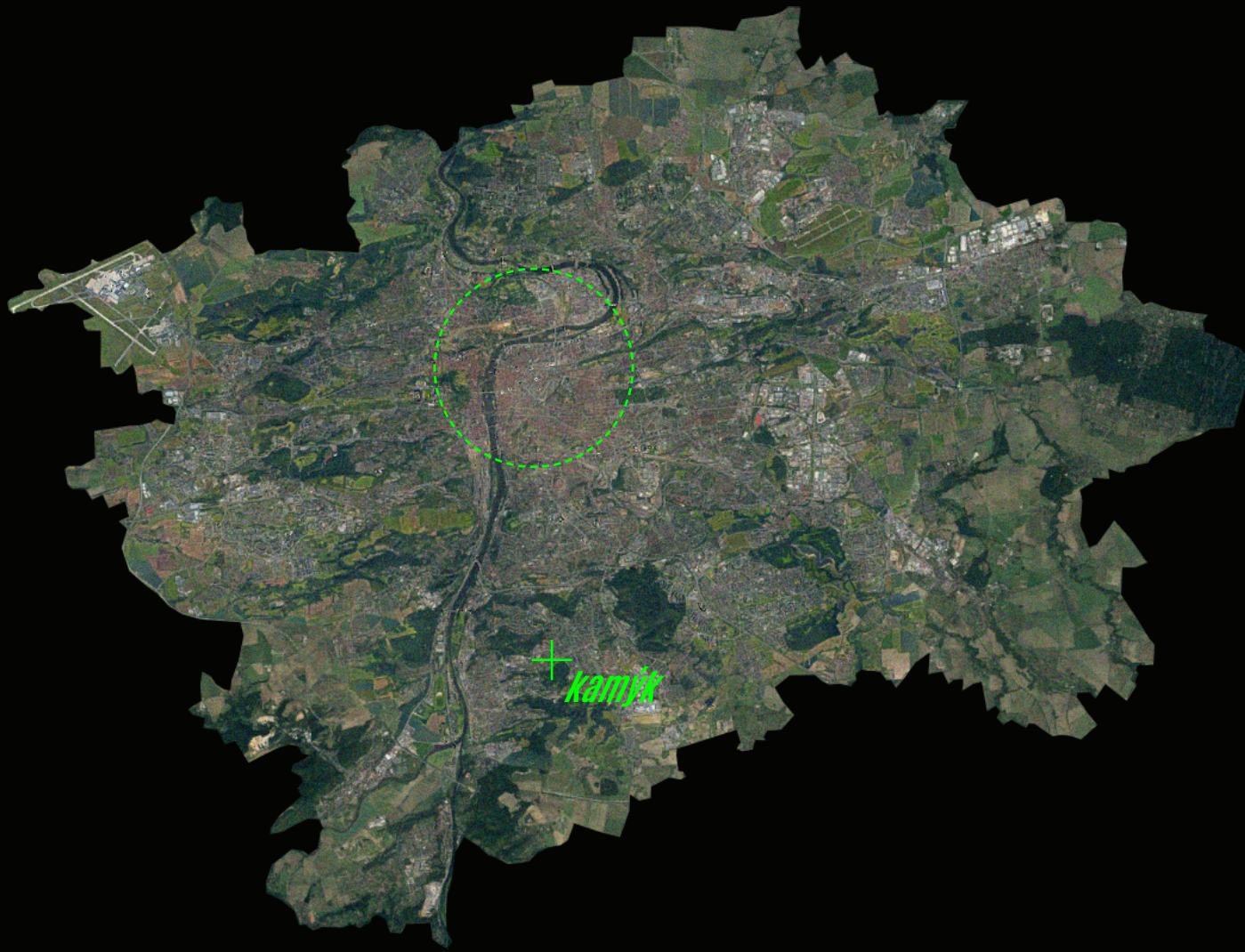




*care addressee*



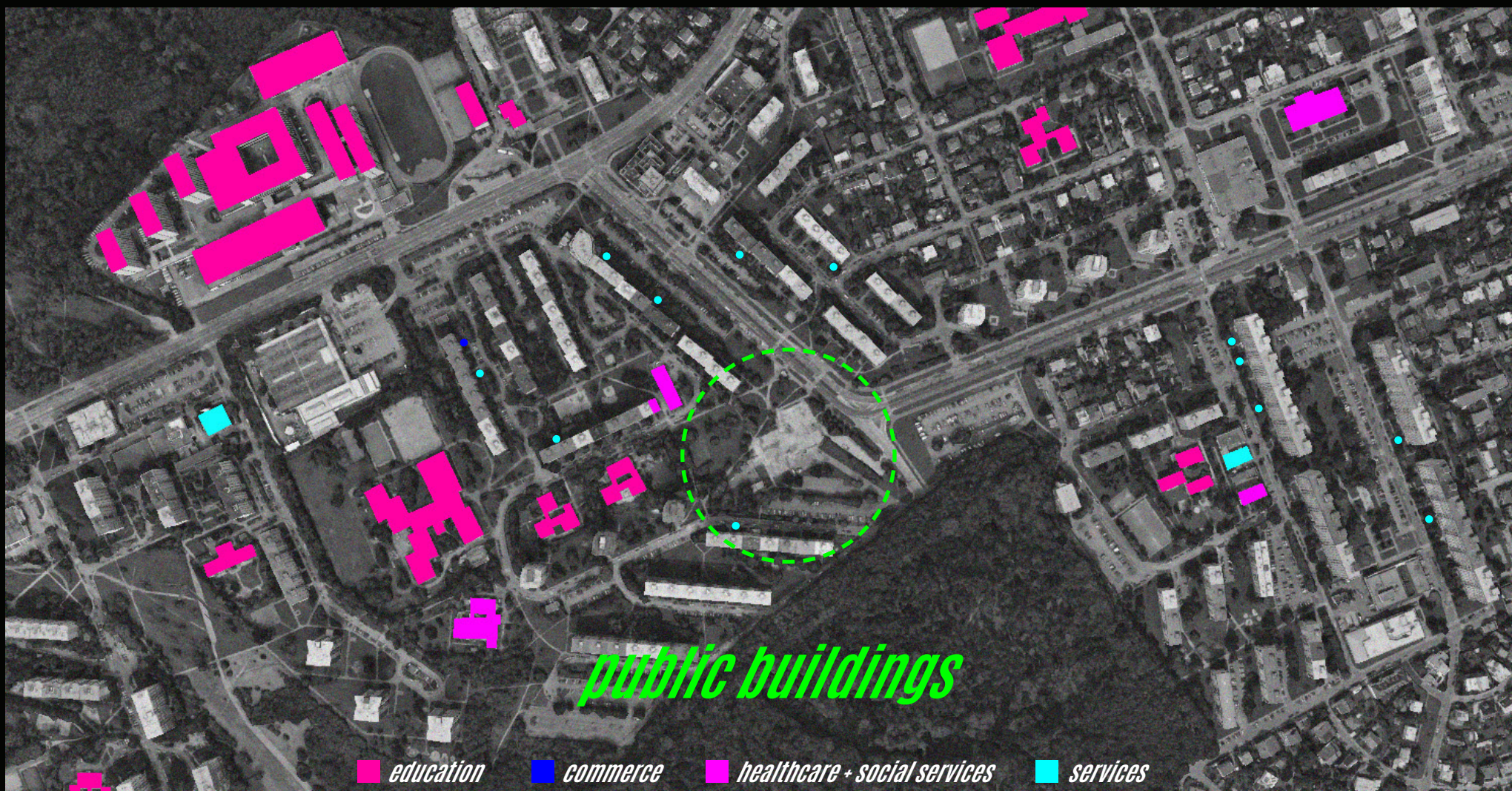
***SITE***



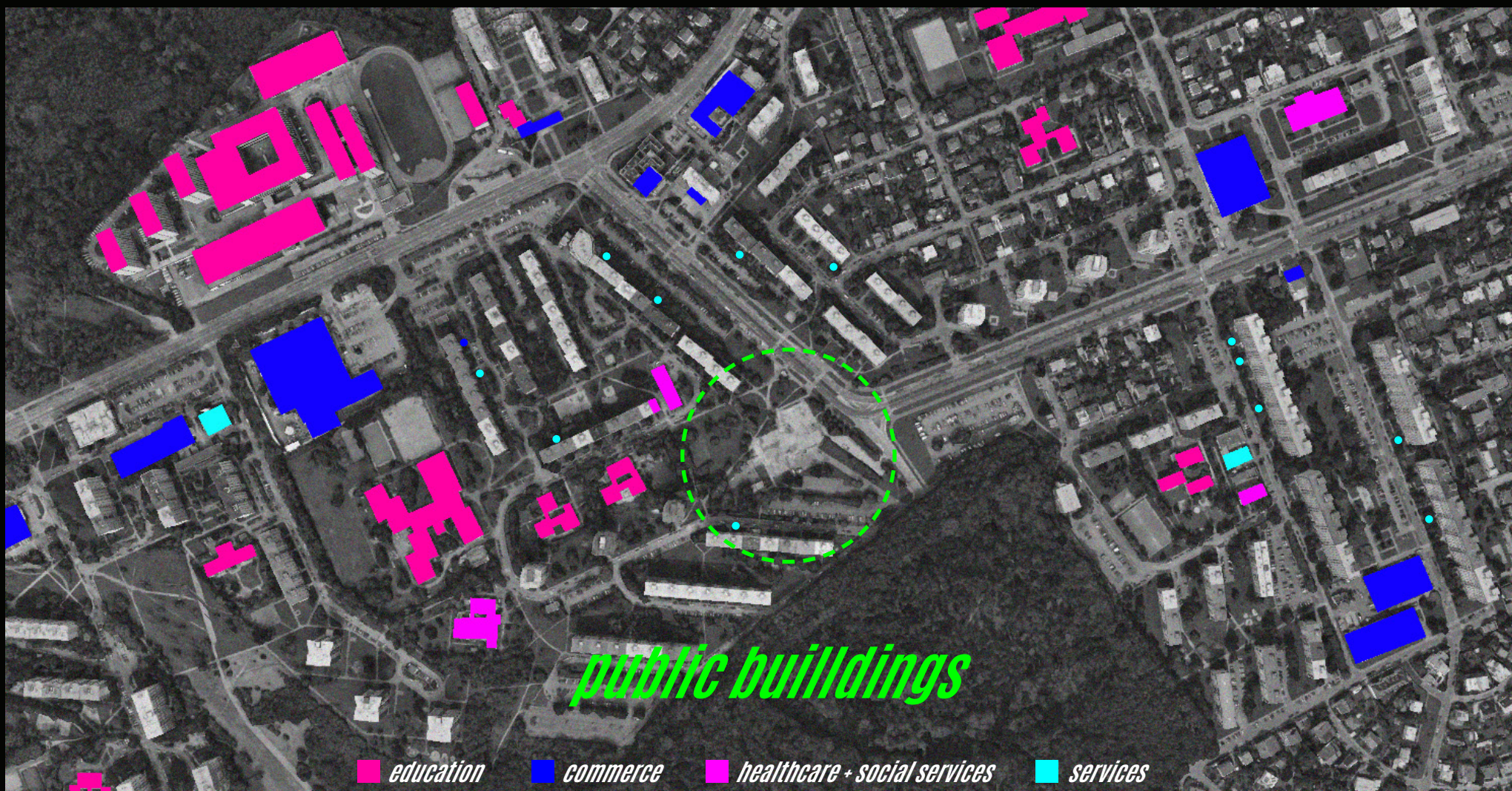














## Bytový dům Kamýk (Dvě věže) – nový projekt, ul. Vosátkova



**Pozemek:**

k. ú. Kamýk, parc. č. 1859/36; [mapa](#)

## Polyfunkční dům Jasná

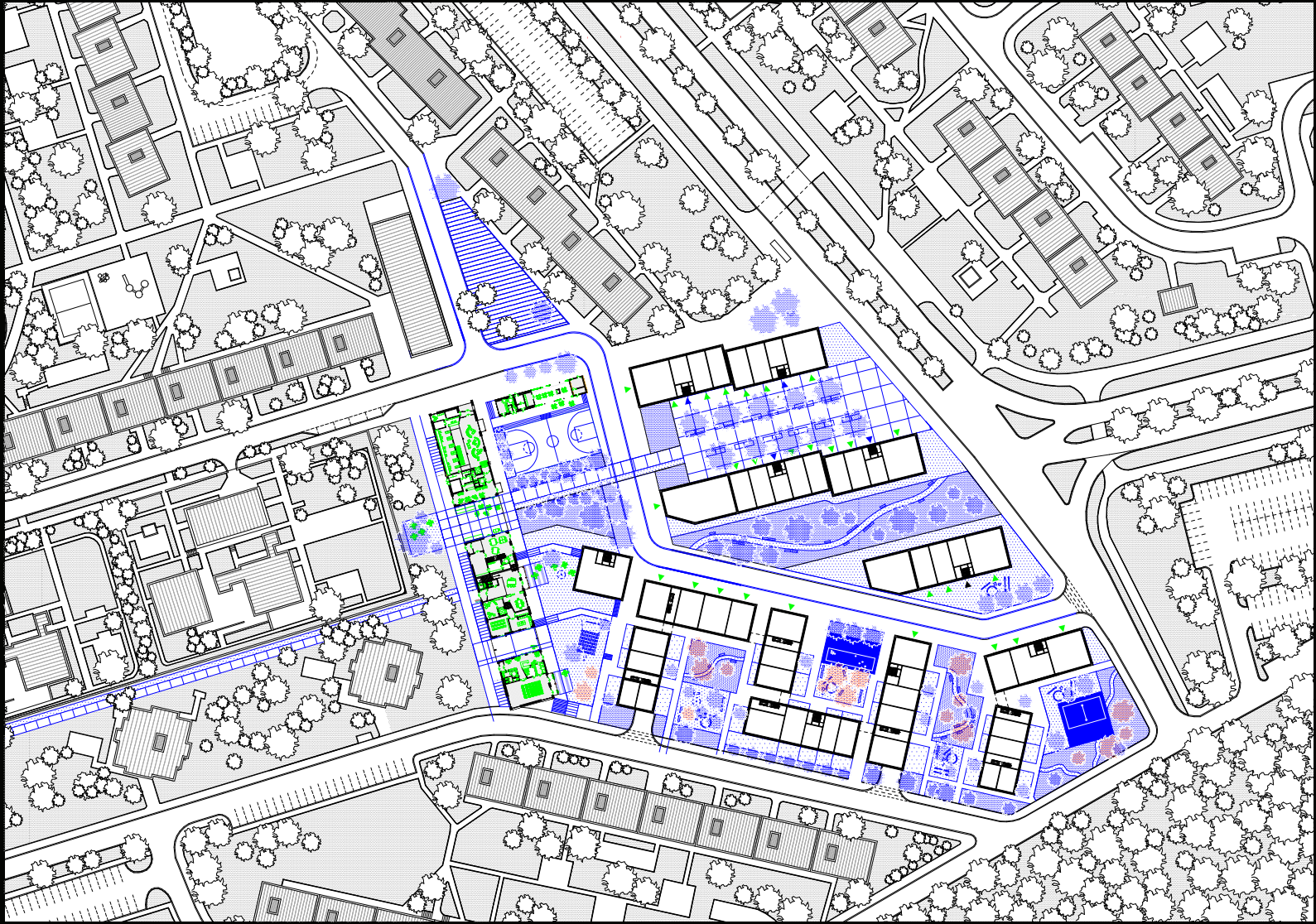


**Pozemek:**

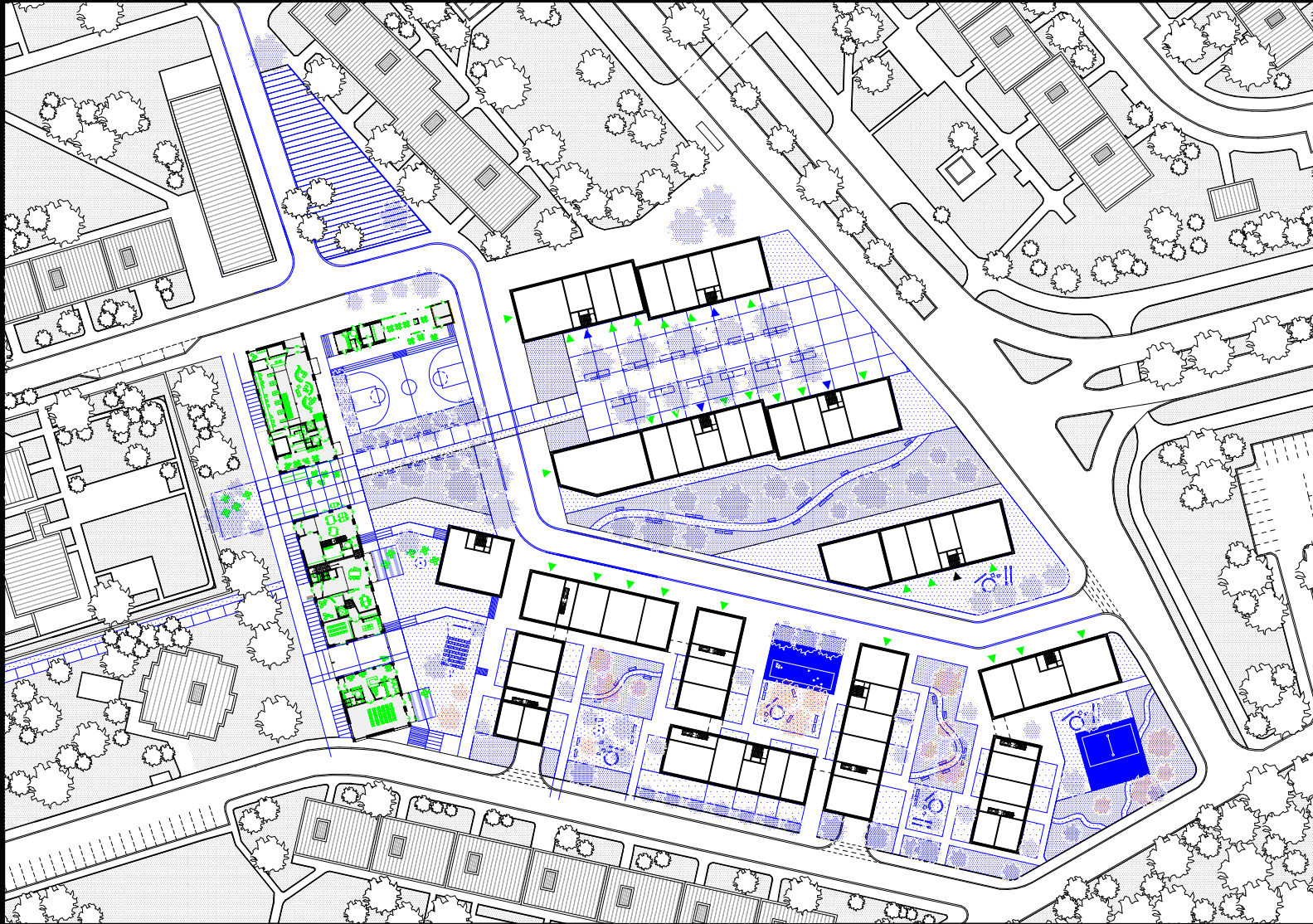
k. ú. Kamýk, parc. č. 580/29, 580/26, 580/22, 580/27, 580/28, 574/2, 1933/3; [mapa](#)

*isolated plans*





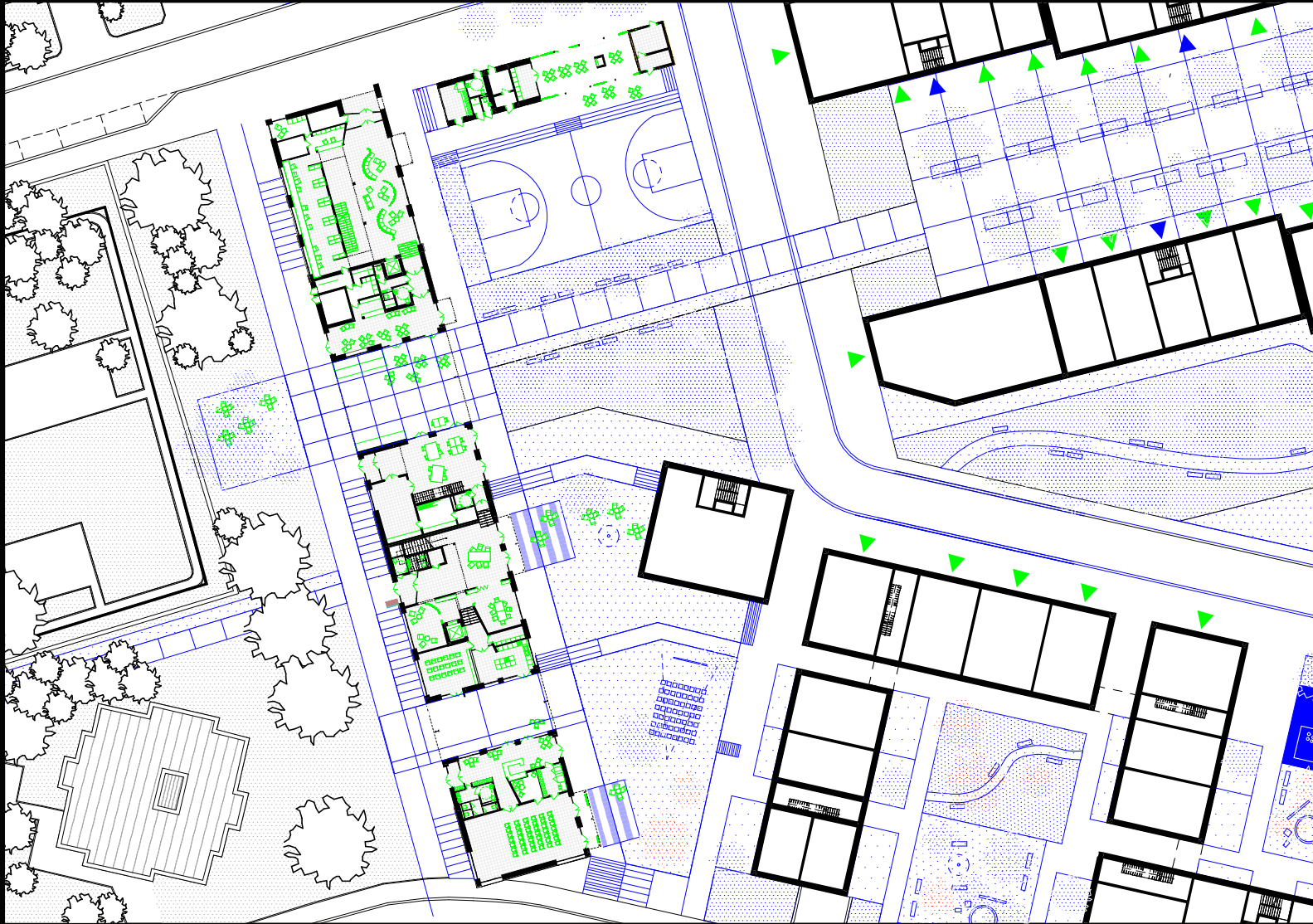






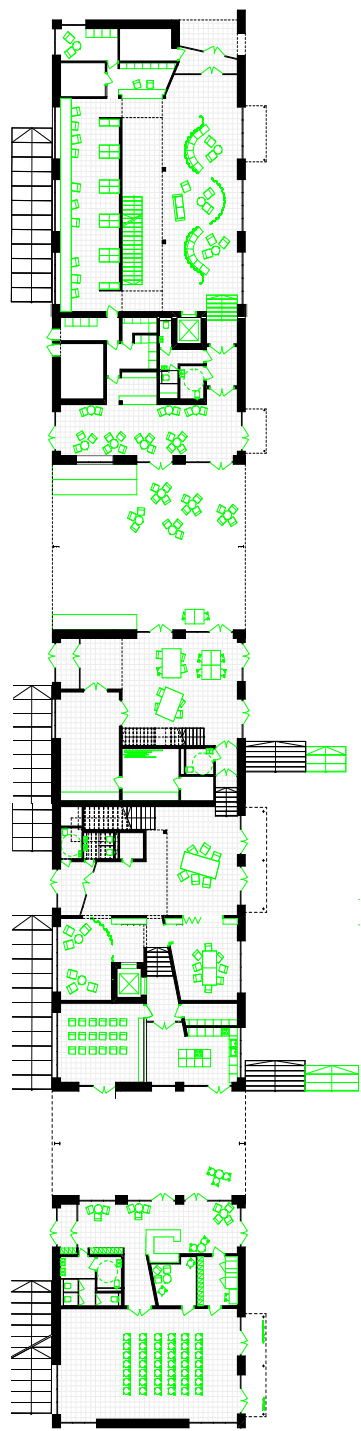




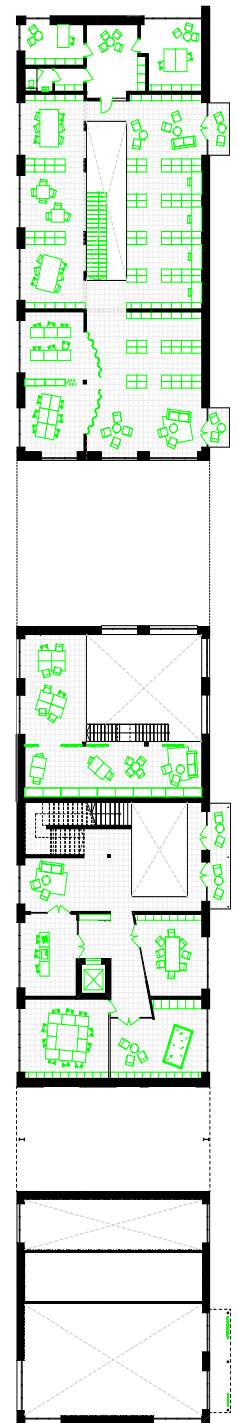




+0



+1



+0

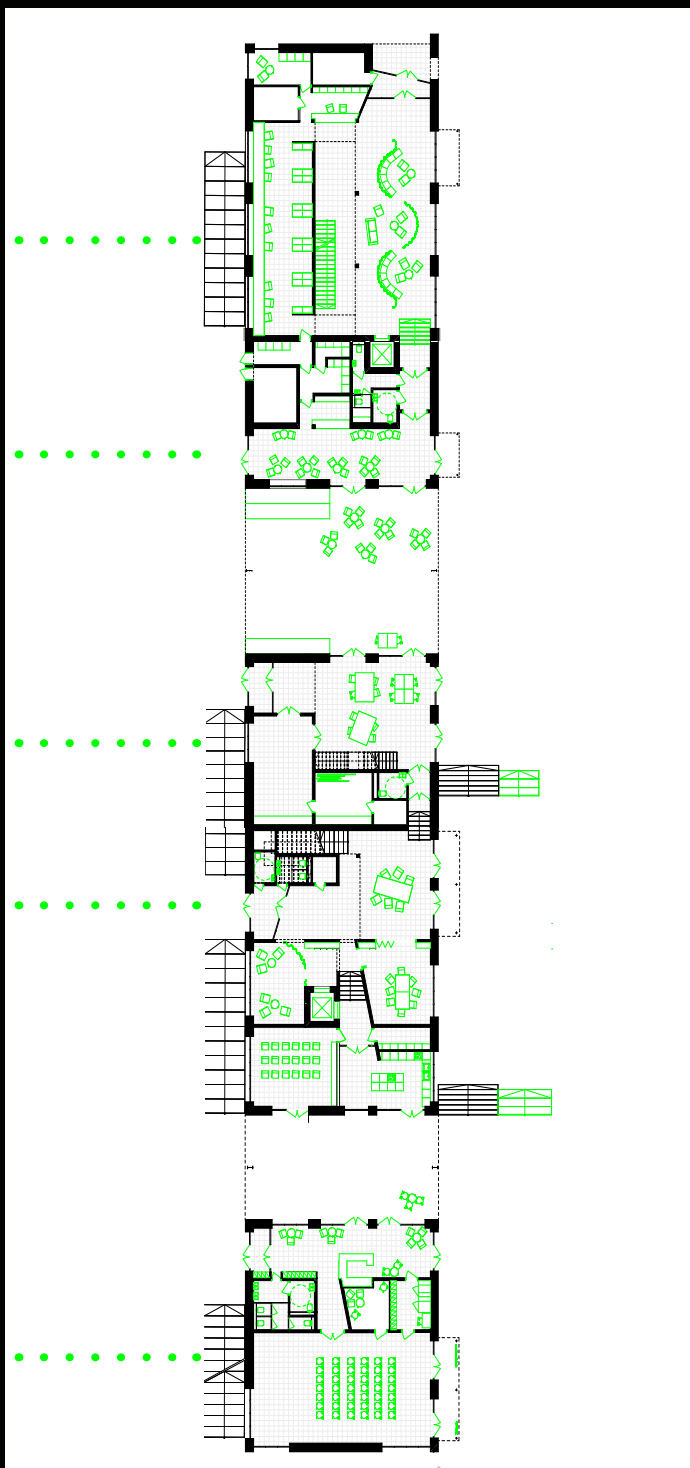
library

café

material / time bank

shared space /  
community center

hall



+1



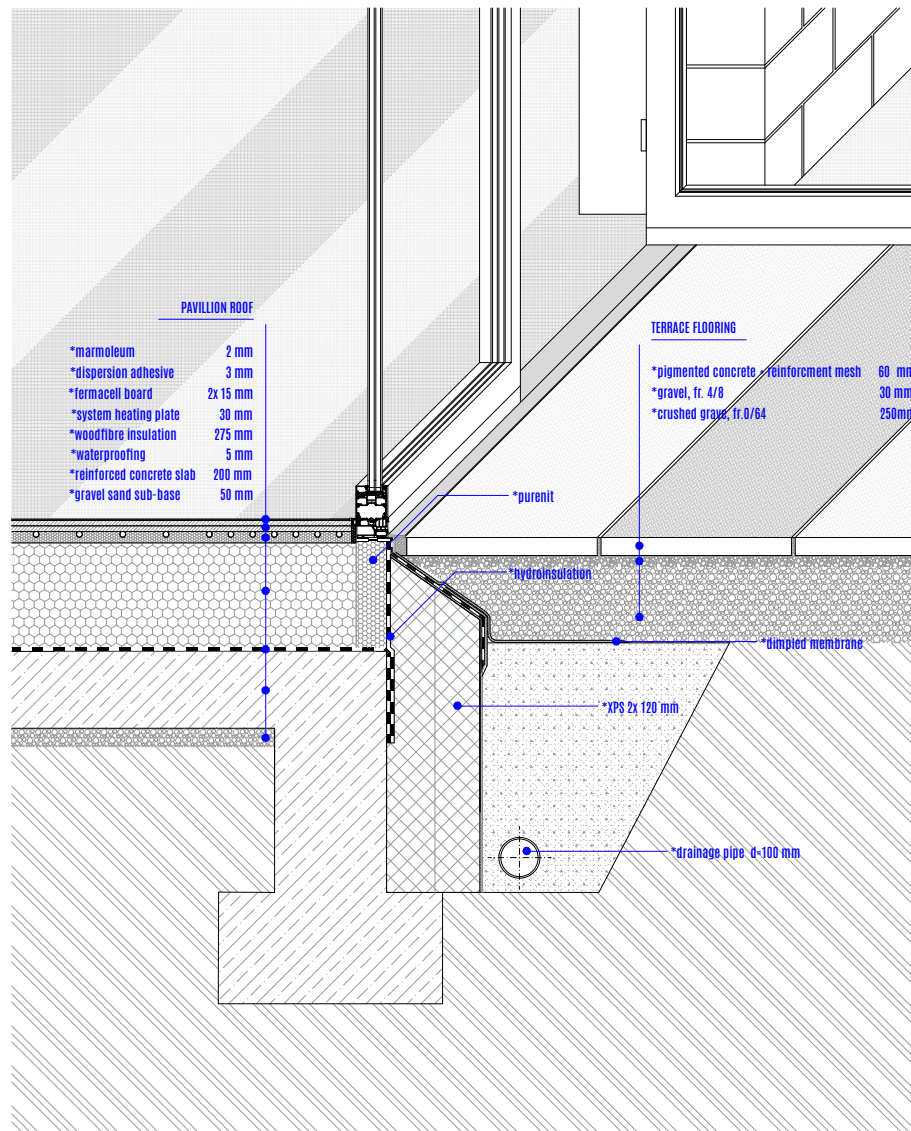




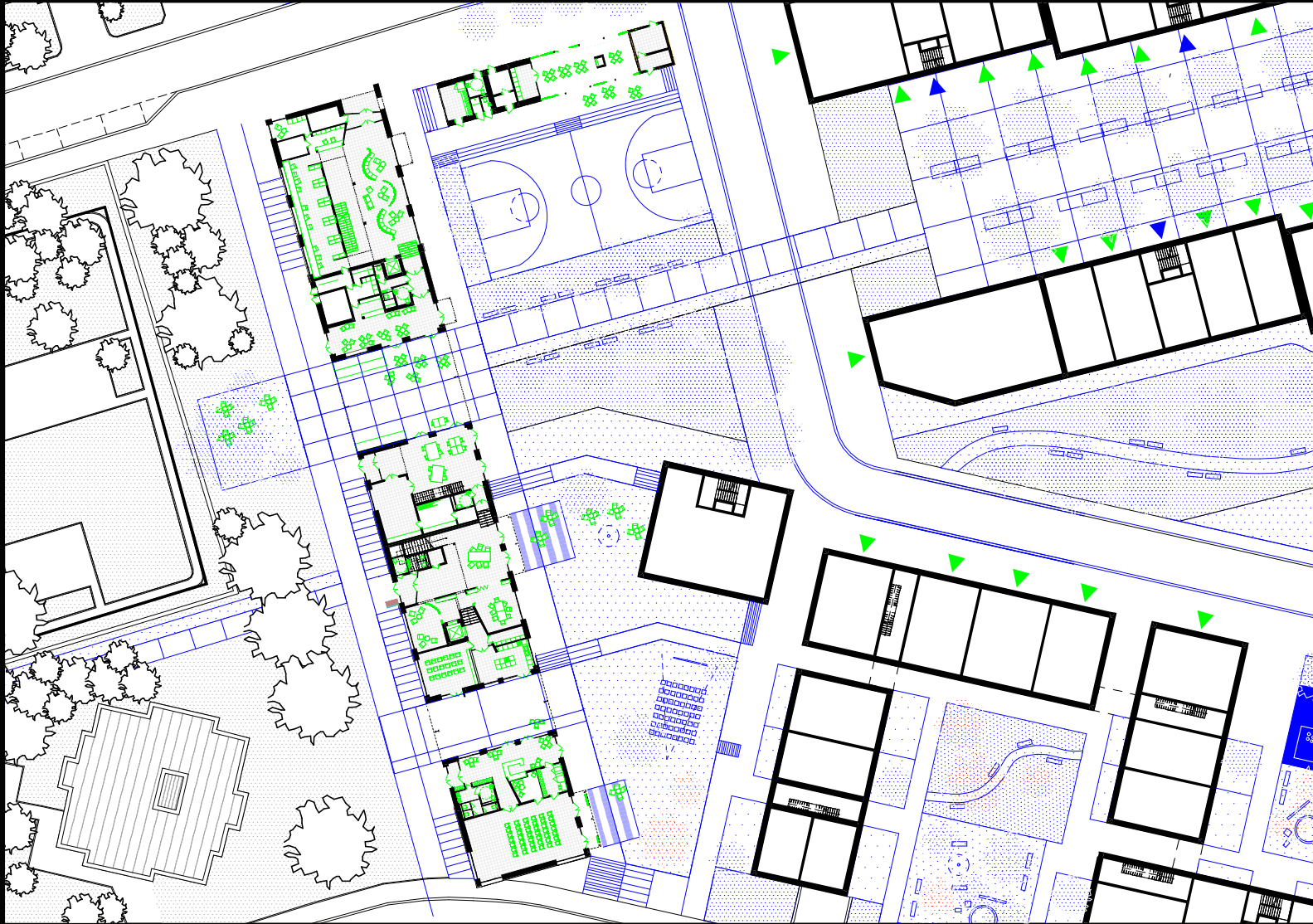


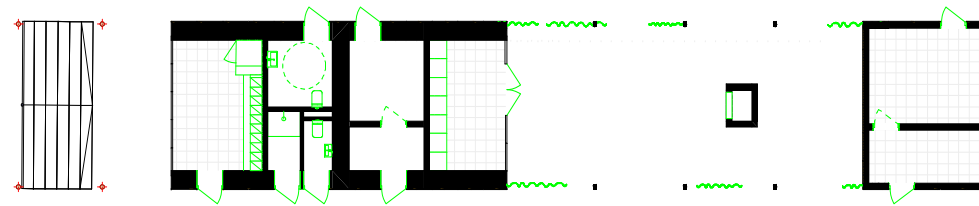




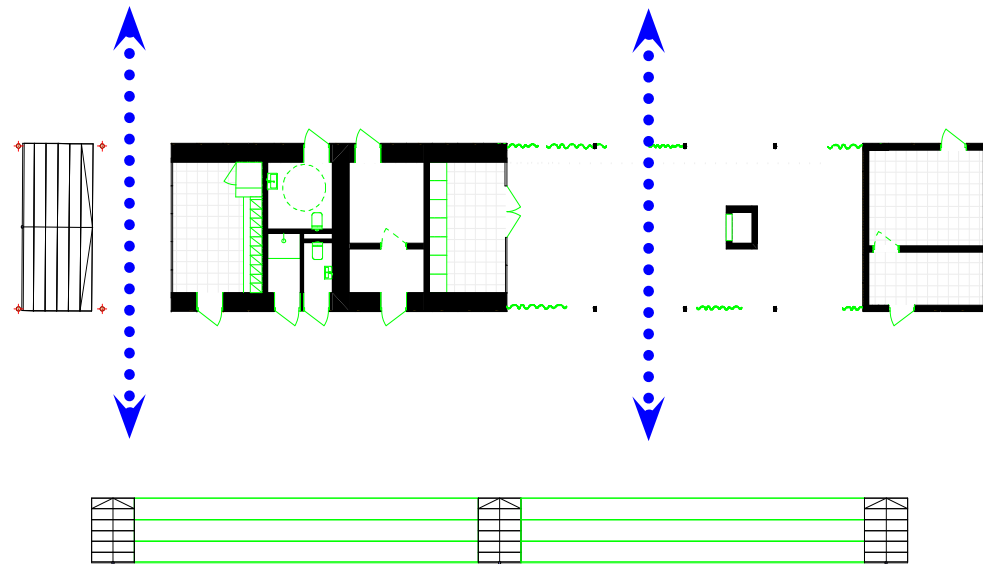


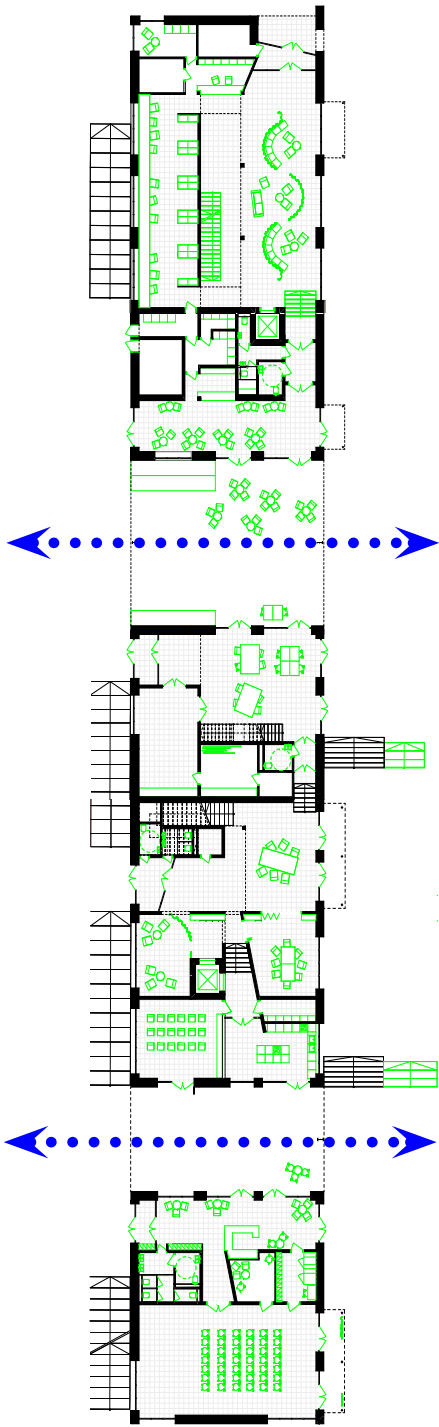






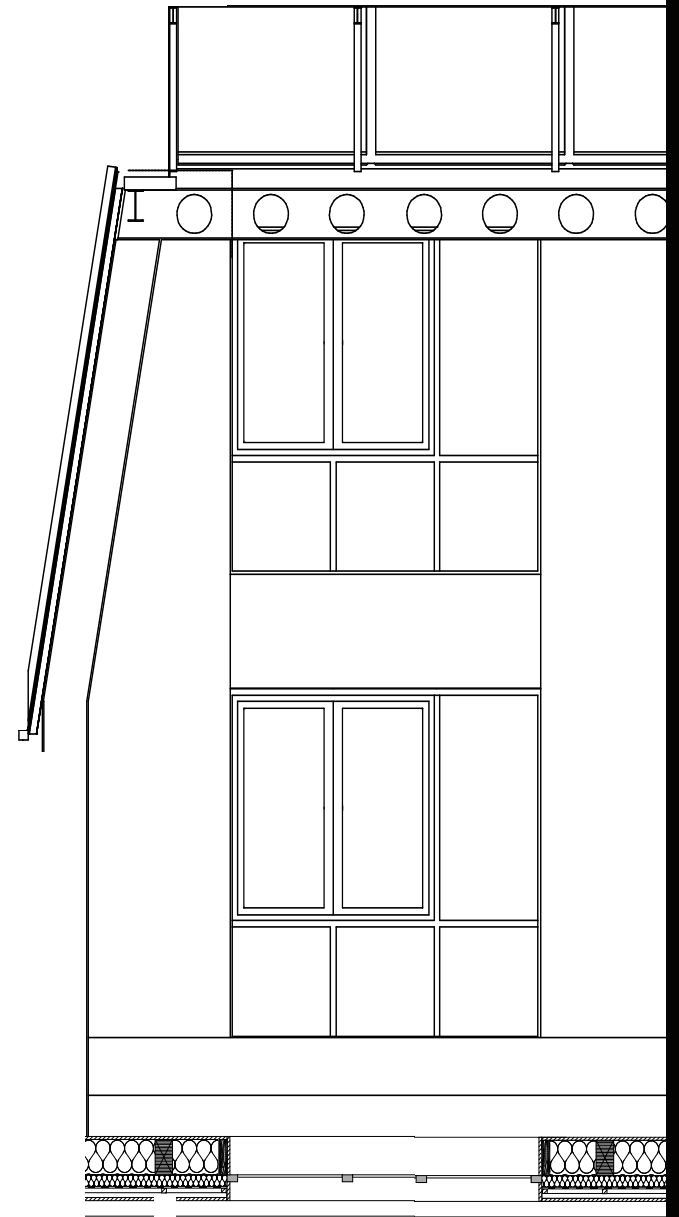
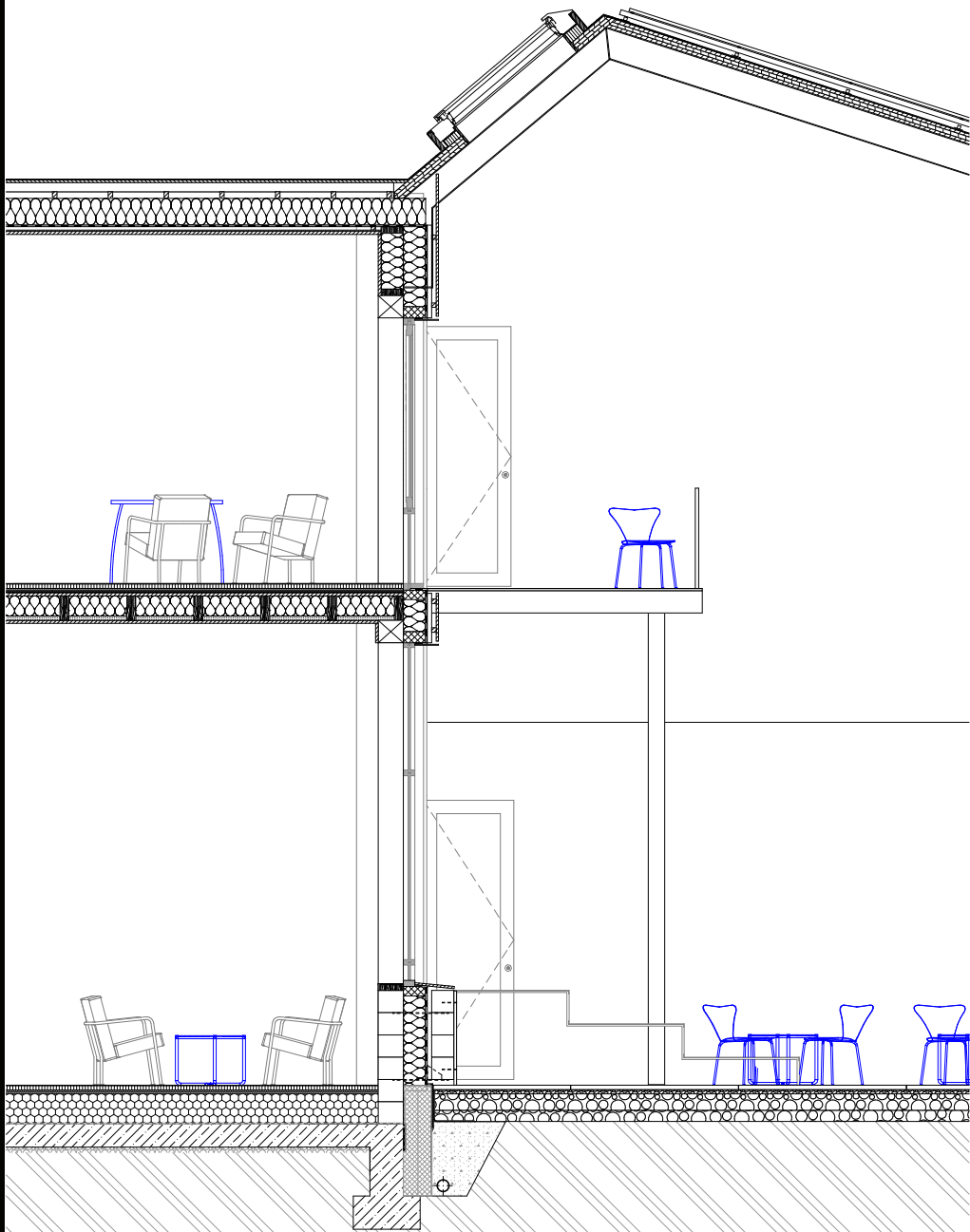














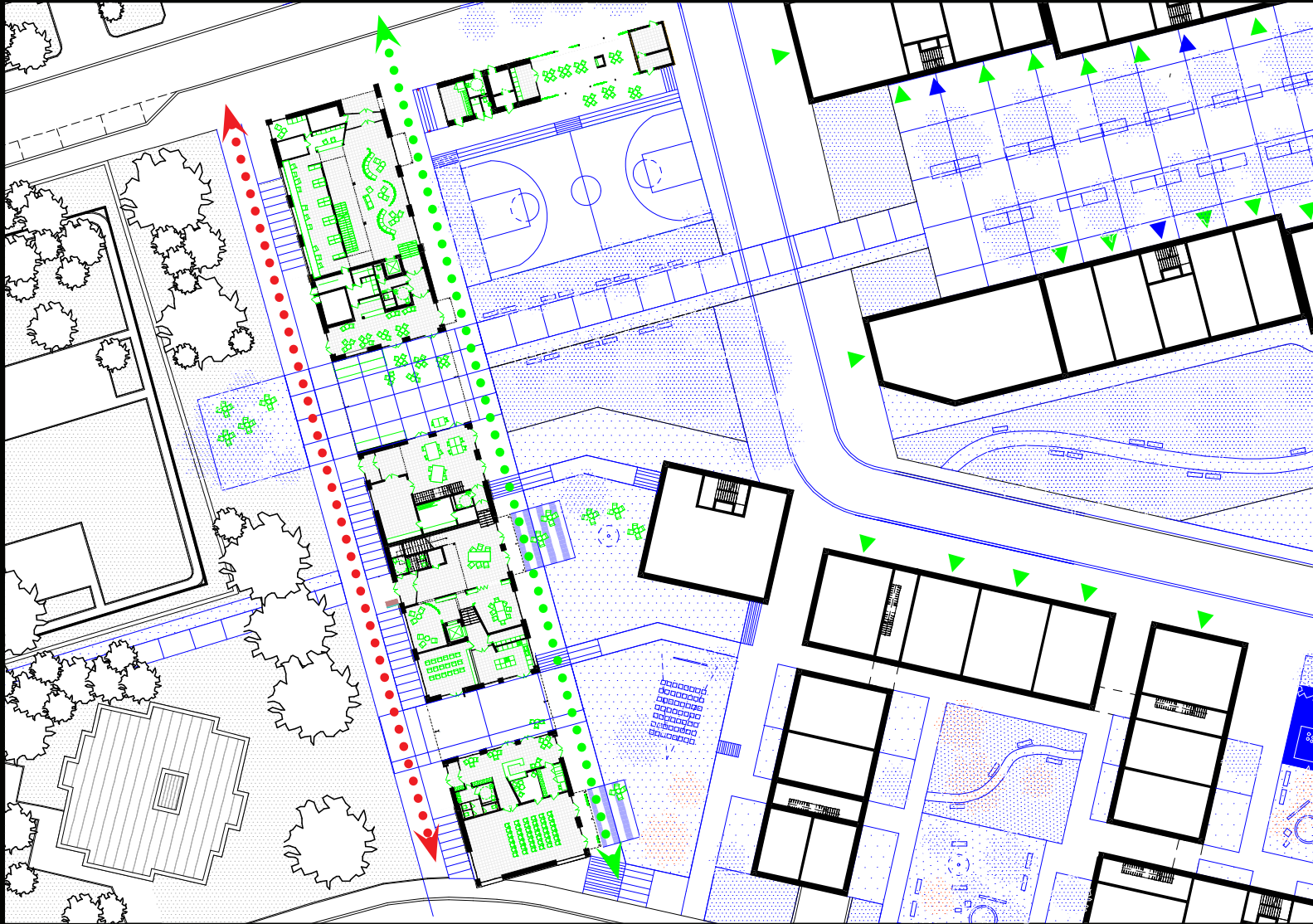






















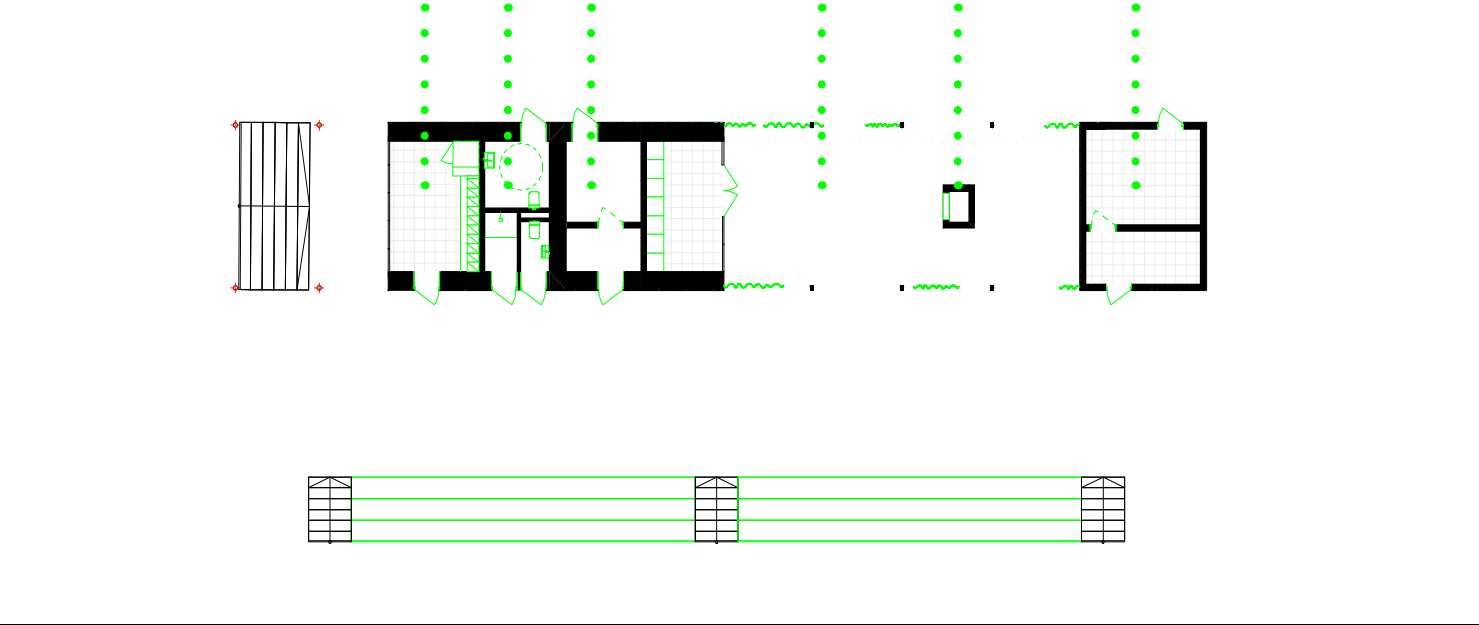












*community garden storage*

*fireplace*

*covered exterior space*

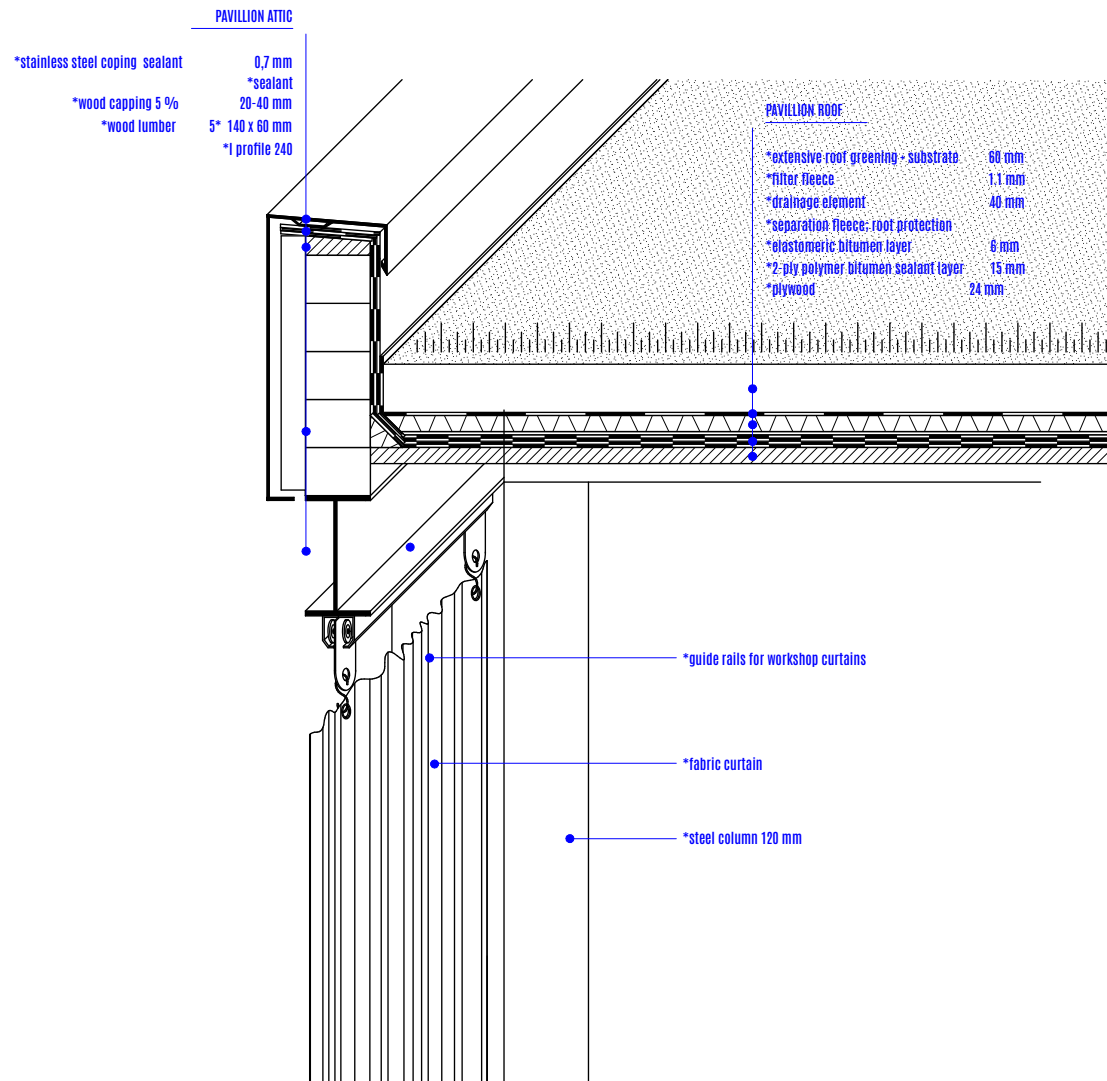
*storage*

*public toilets*

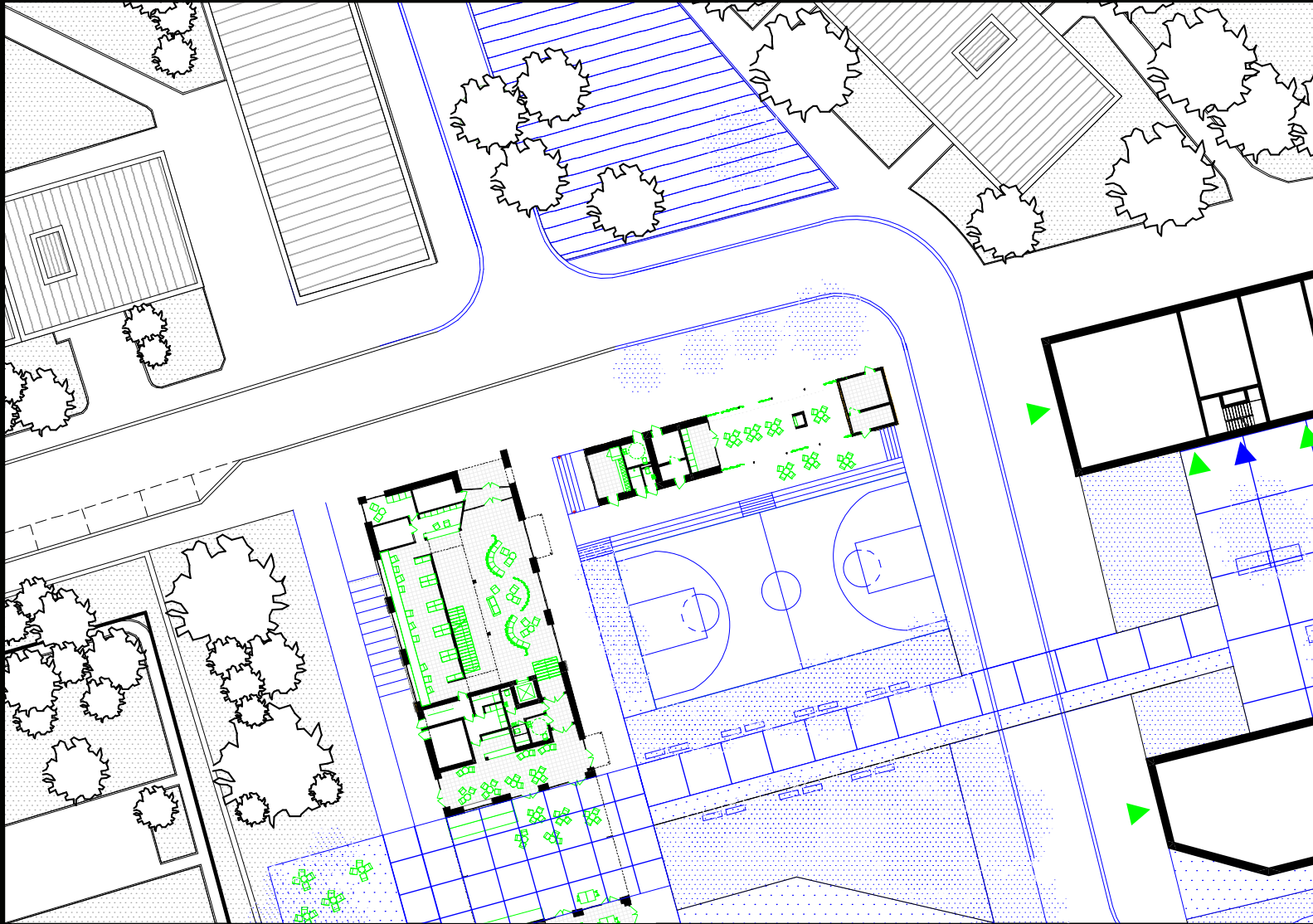
*changing rooms*





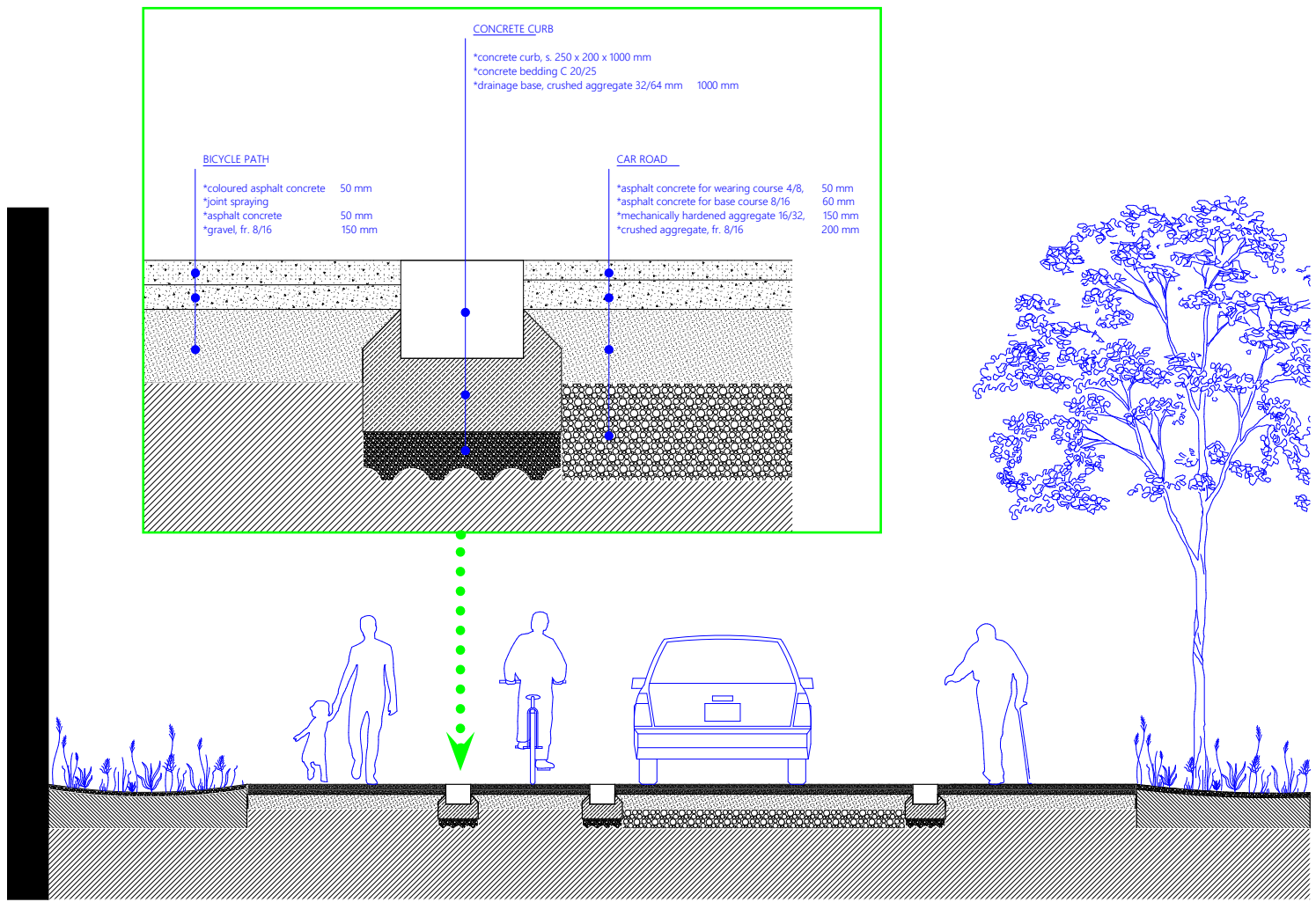














 fruit trees





 *fruit trees*









