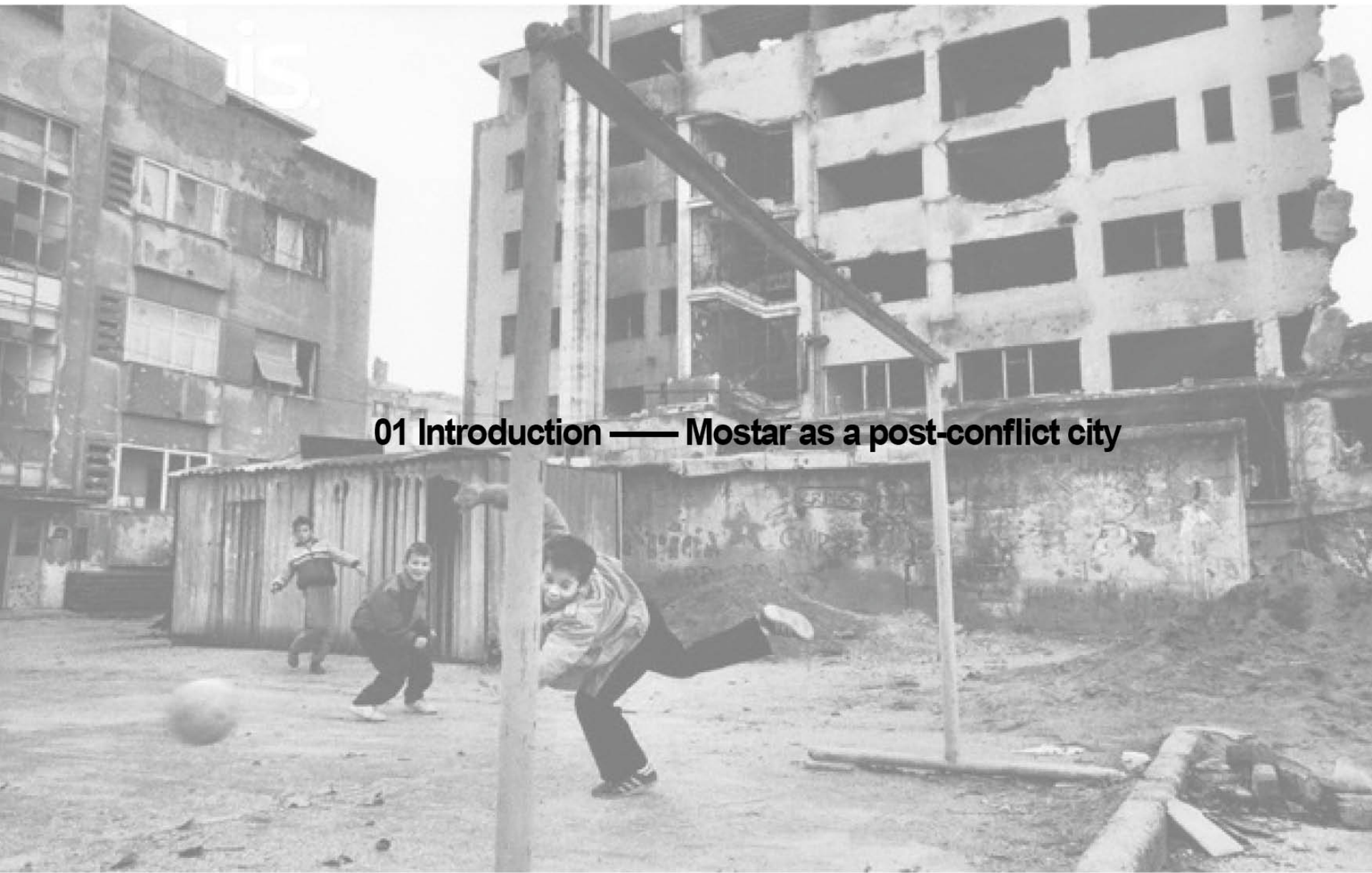




Public space as a cohesive force:
the landscape intervention in post-conflict city, Mostar

Shiqi Peng 4747348



01 Introduction — Mostar as a post-conflict city

Rather than beginning and ending cleanly, conflicts are inherited and either perpetuated or transformed by successive generations. Today, many areas still suffer from the effects left by post-conflict situation or even being in the war.

Former Yugoslavia

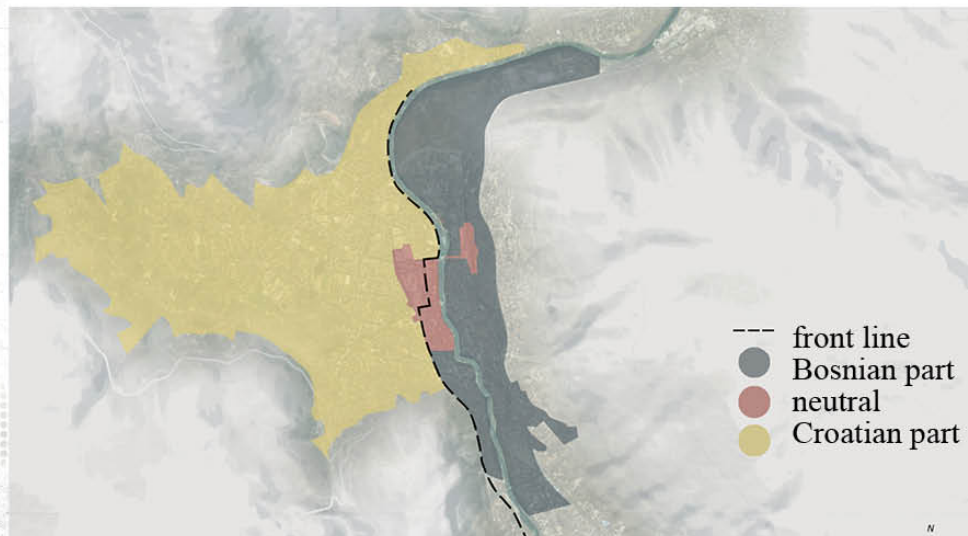


Bosnia and Herzegovina





Ethnic division in Mostar



Old Bridge during the war



Old Bridge after reconstruction



However, the public life in reality is not as good as the told story. The reconstruction of the old bridge and other bridges did not really lead to connect people, as people still stay in their religious side boundary. Obviously, the once most religiously mixed city turns into a divided city today in both physical and mental aspects.



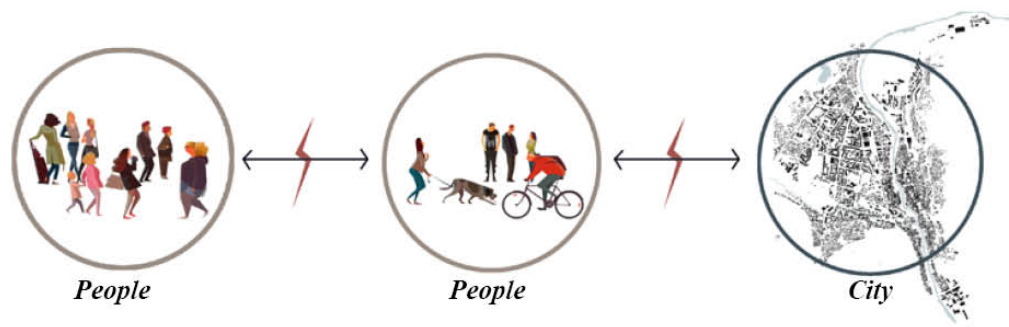
Bridge opens but Mostar remains a divided city



Is Mostar still a divided city?
26 Jul 2018

The New York Times

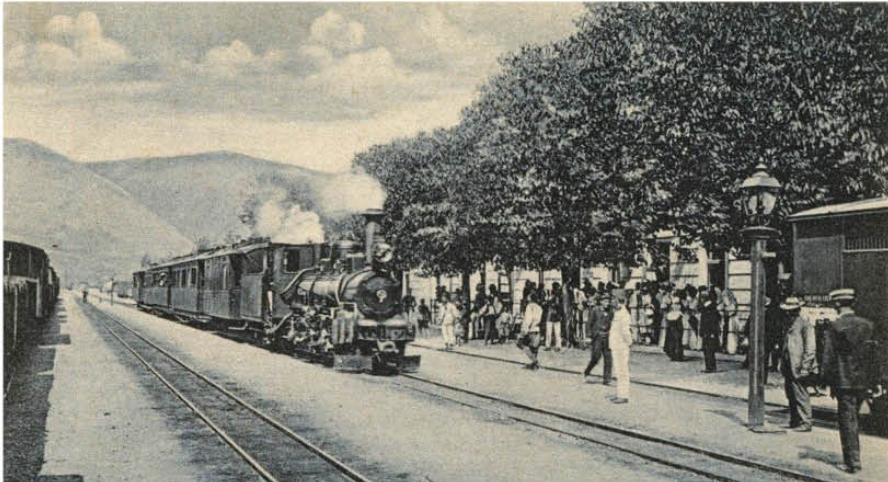
*In a Divided Bosnia,
Segregated Schools Persist*



Public spaces in poor quality: former HIT Square



Heritage in abandoned area: Old train station



Hence, the general problem this project dealing with is: the mental division between people and the loss of memory between inhabitants and city.

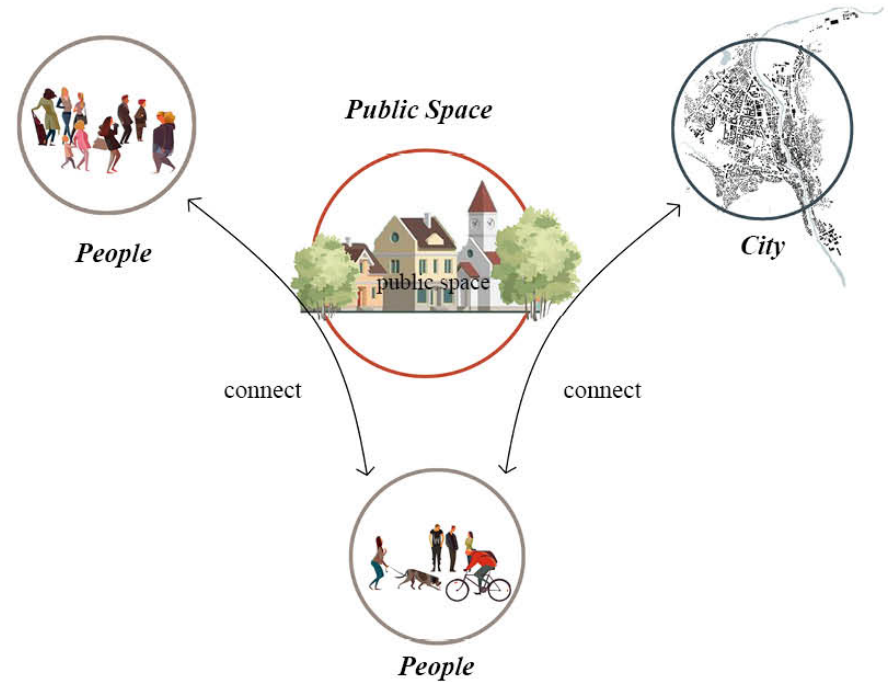
We can't design our way out of conflict, but the way we build neighborhoods can either help or hinder polarized communities, and public space is one point to start.

Objective

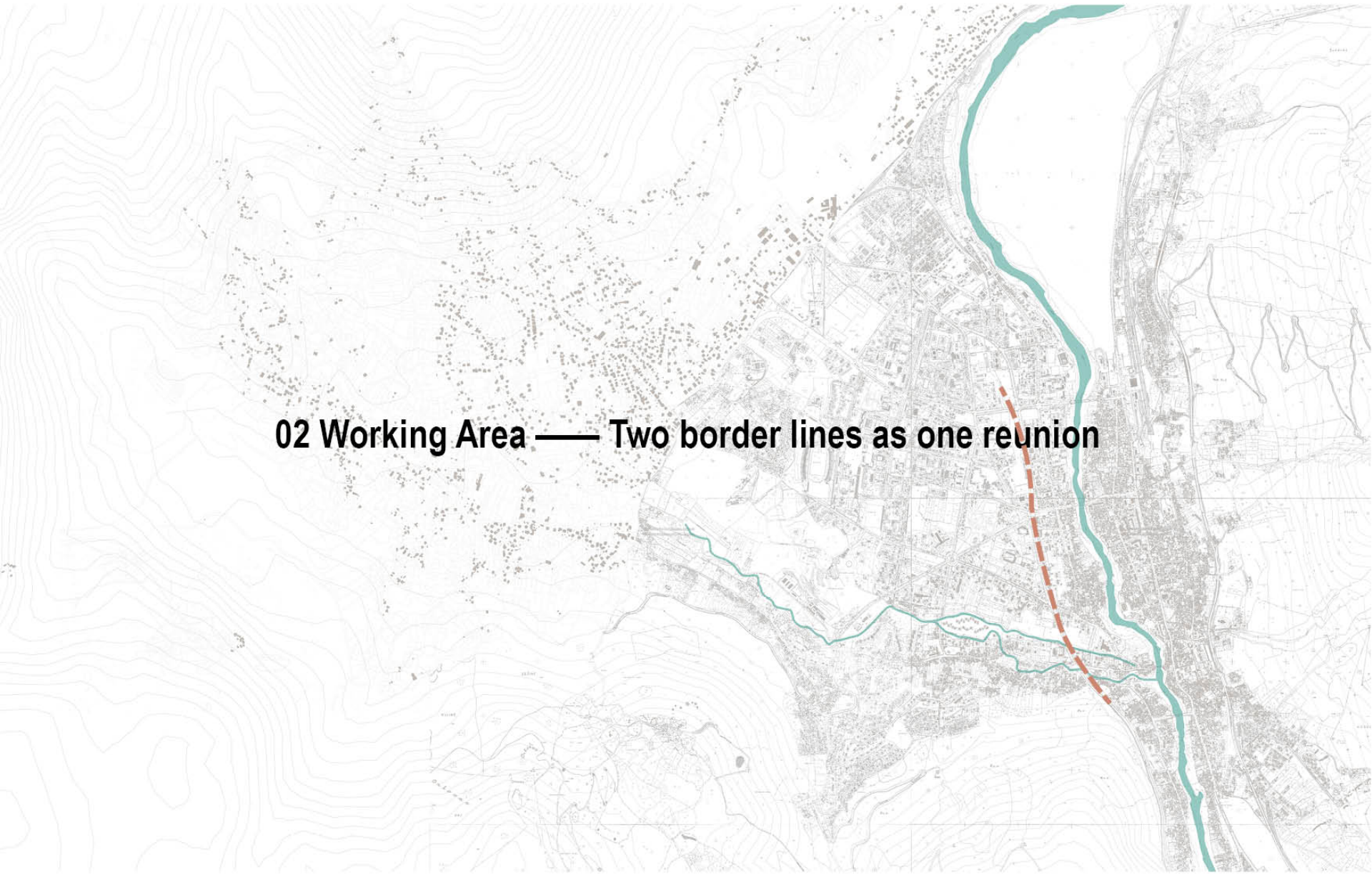
This project seeks to mitigate the mental division of the city and promote the construction of a cohesive society by redesigning and improving public spaces as landscape intervention.

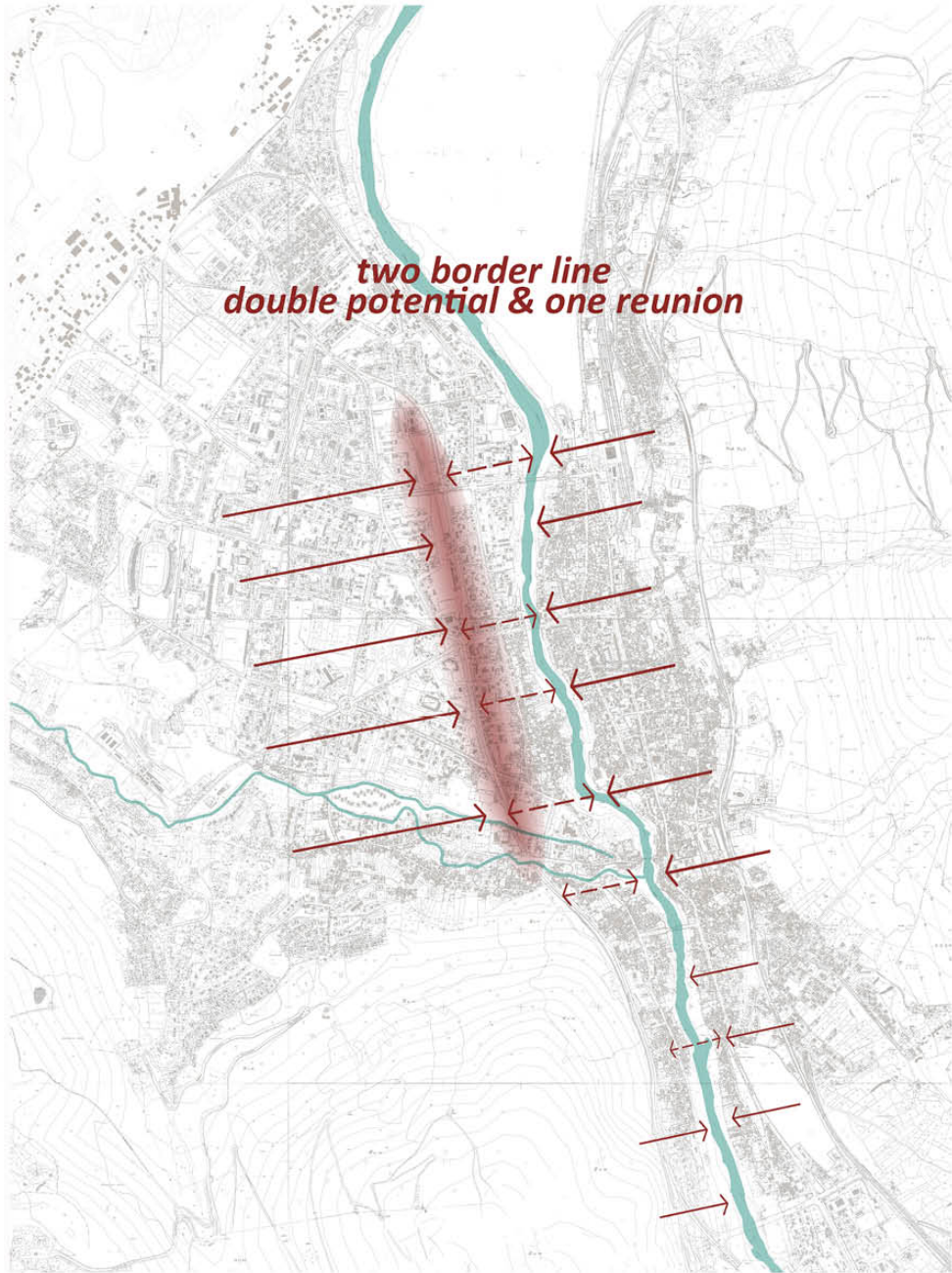
Research Question

How can the historical and social value of public spaces in Mostar be enhanced by landscape interventions to mitigate the mental division between people?



02 Working Area — Two border lines as one reunion





*two border line
double potential & one reunion*

Two potential lines:

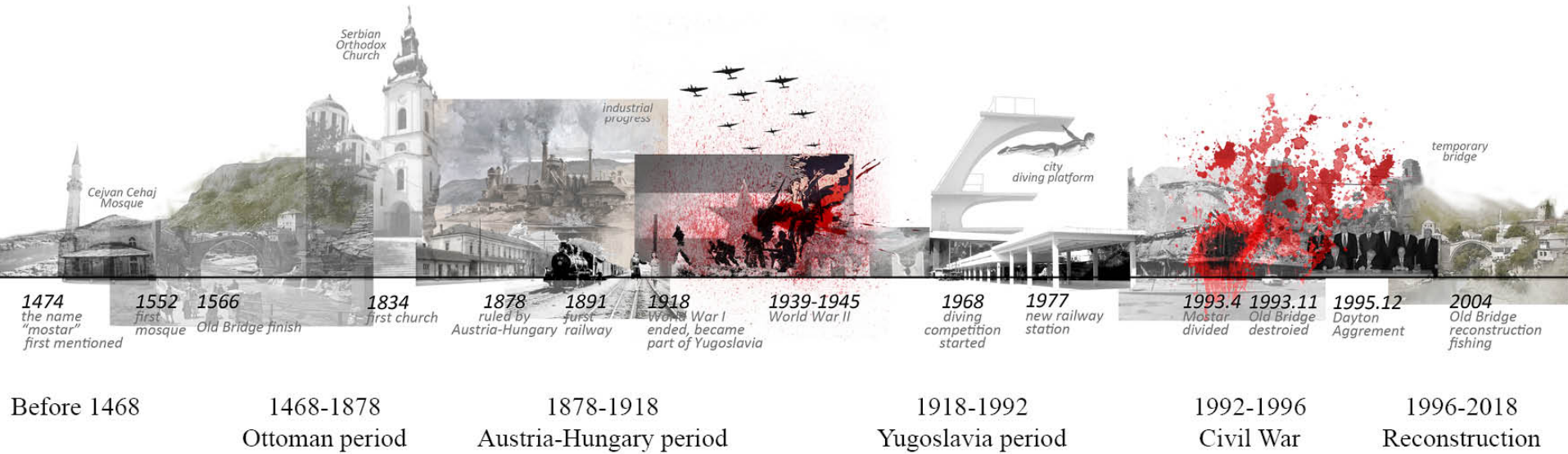
Important role in city structure

Border lines

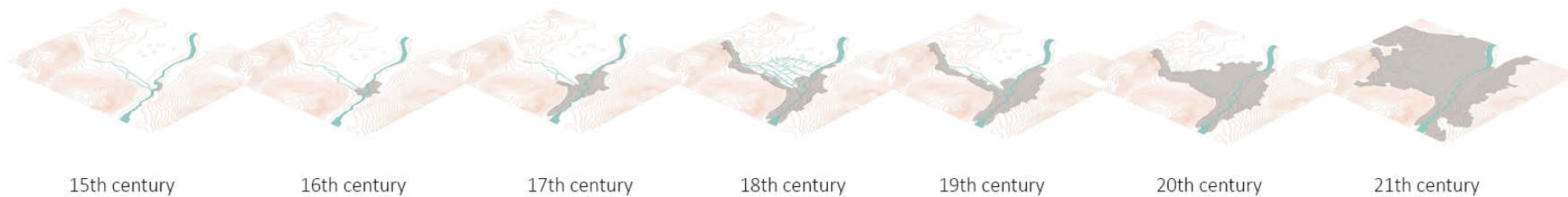
Carriers of memory

Important role in city structure

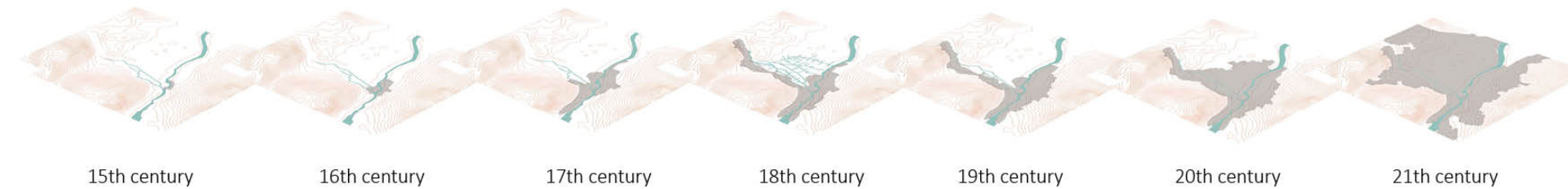
City development time line



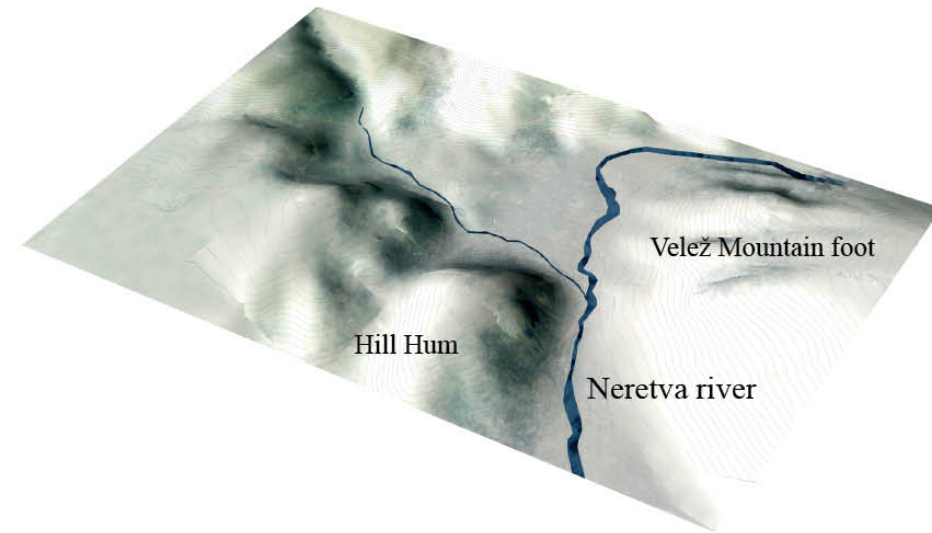
Urban area development time line



Important role in city structure----development backbone



Neretva River in vally area



Railway along boulevard in west



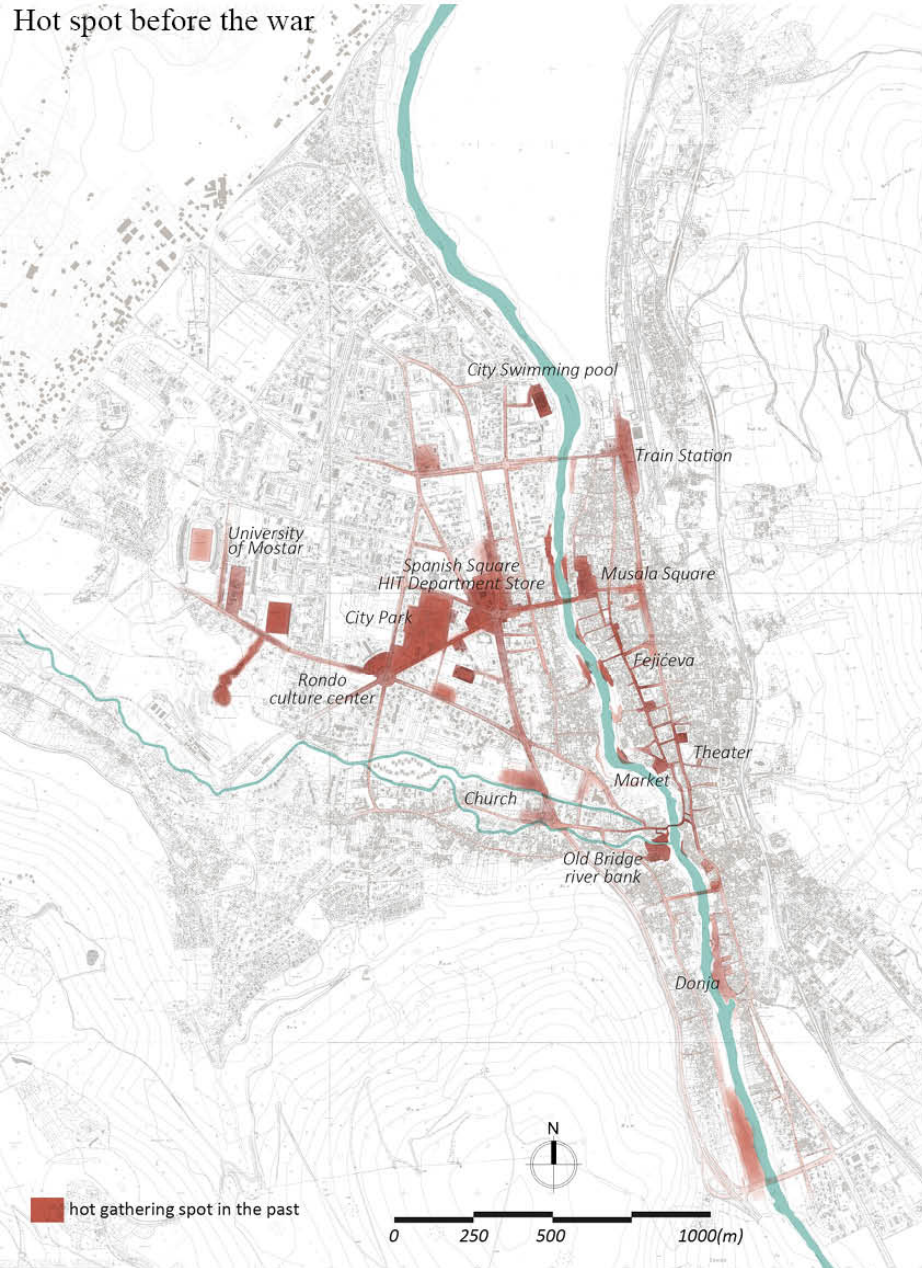
15th-19th century: mainly along the Neretva river and Radobolja river

limited to the topography and nature resource distribution;
flood risk, rainfall risk, military protection, agriculture, water source,
weather and trade route;
pattern of "mahala", the traditional housing complex

20th-21th century: mainly focus on the large area on west bank
no more rely on agricultural production;
first railway as an opportunity started the development of that area

Border lines---gathering line before the war

Hot spot before the war



Different activities in river area

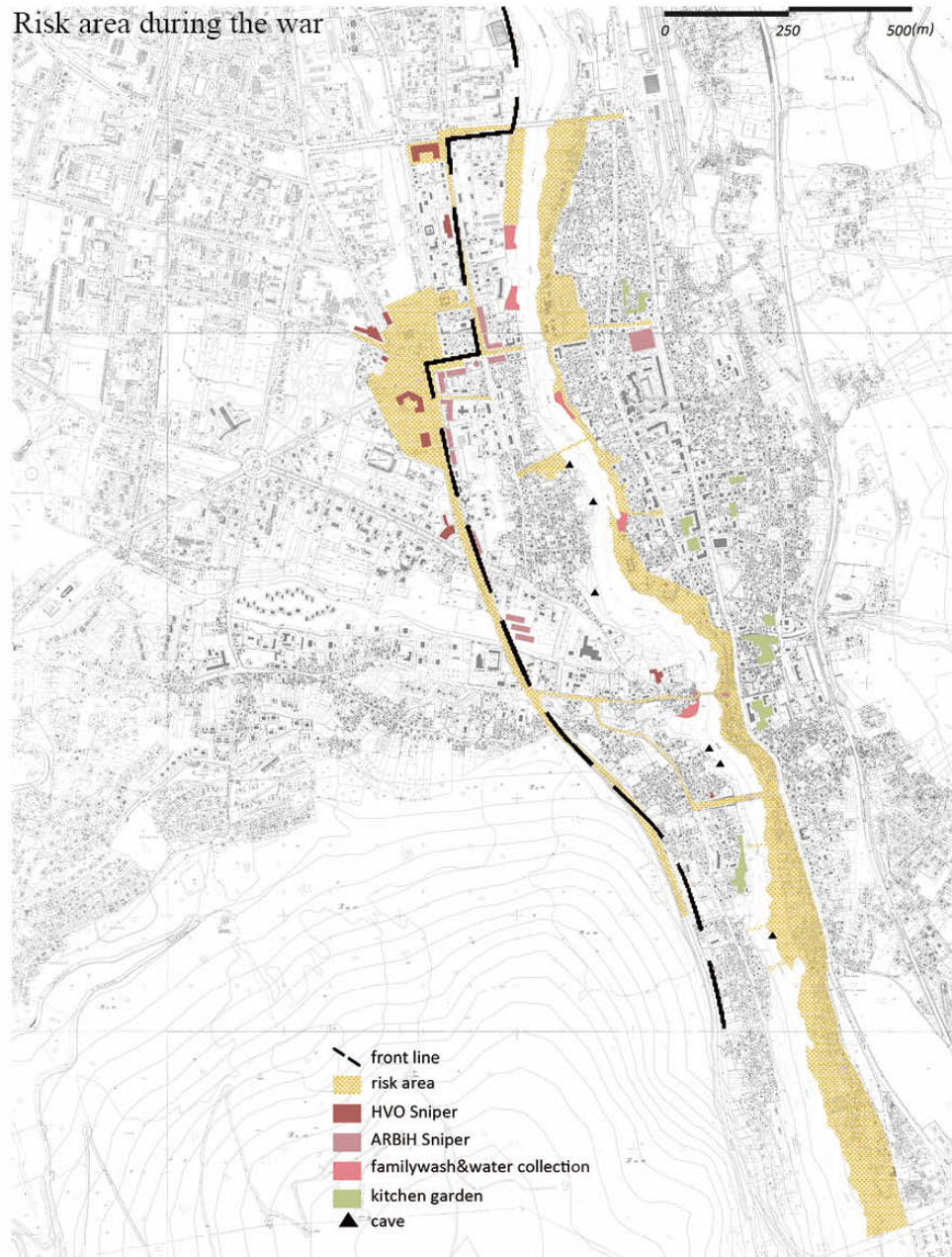


Urban life along boulevard



Border lines----as frontline and risk area during the war

Risk area during the war



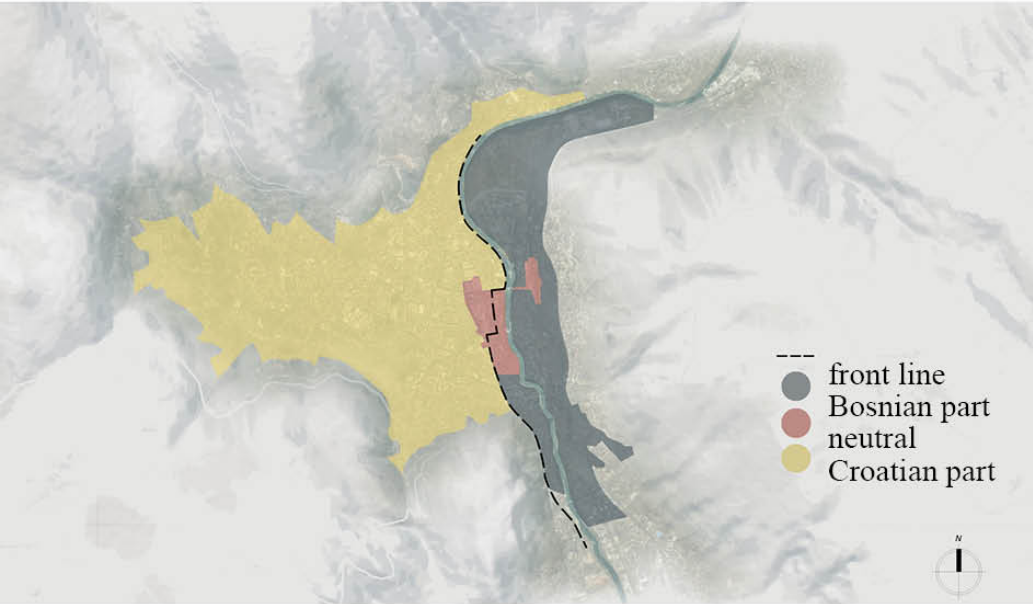
Boulevard as front line



Temporary bridge crossing the river

Border lines----division line after the war

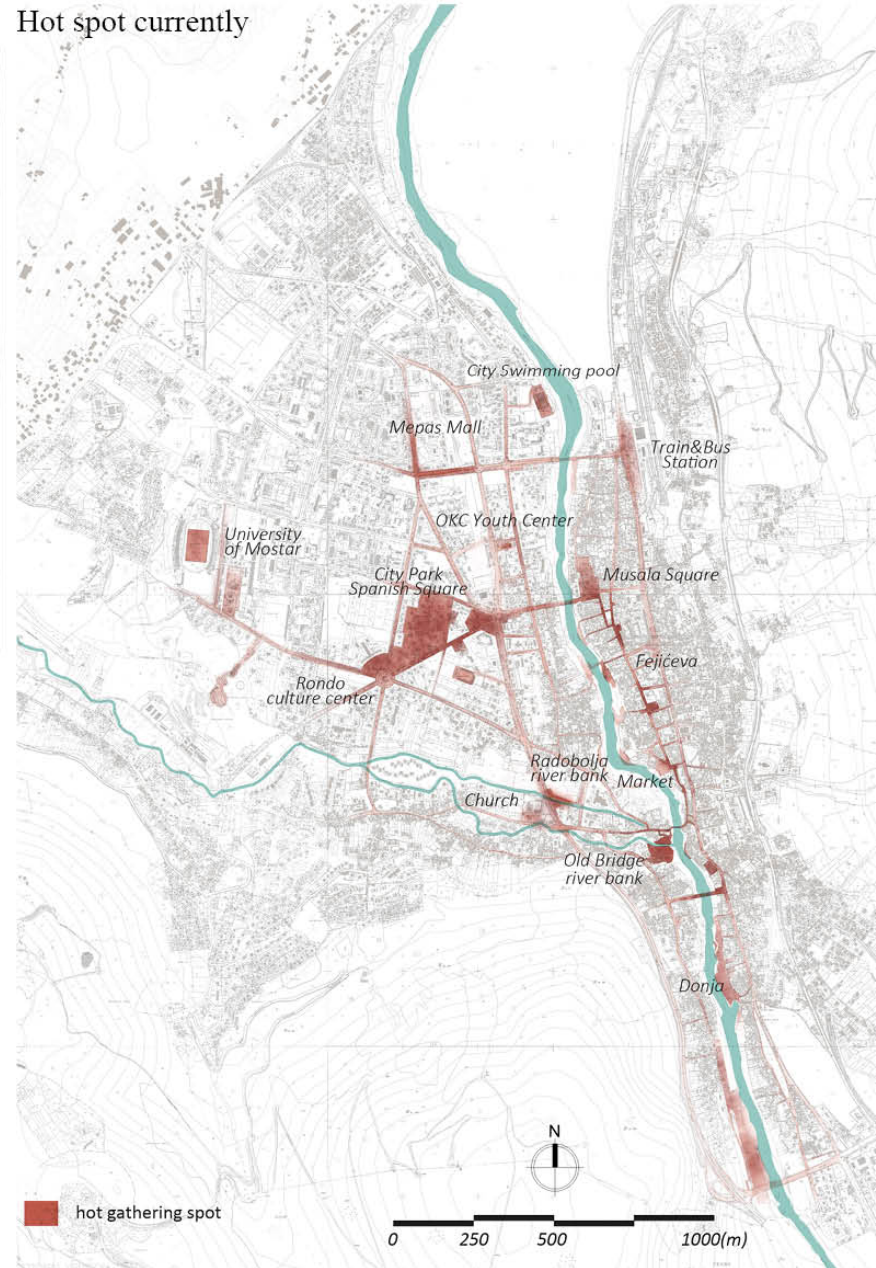
Boulevard (front line) in Mostar



Ethnic change during the war



Hot spot currently



Border lines---mental division line after the war

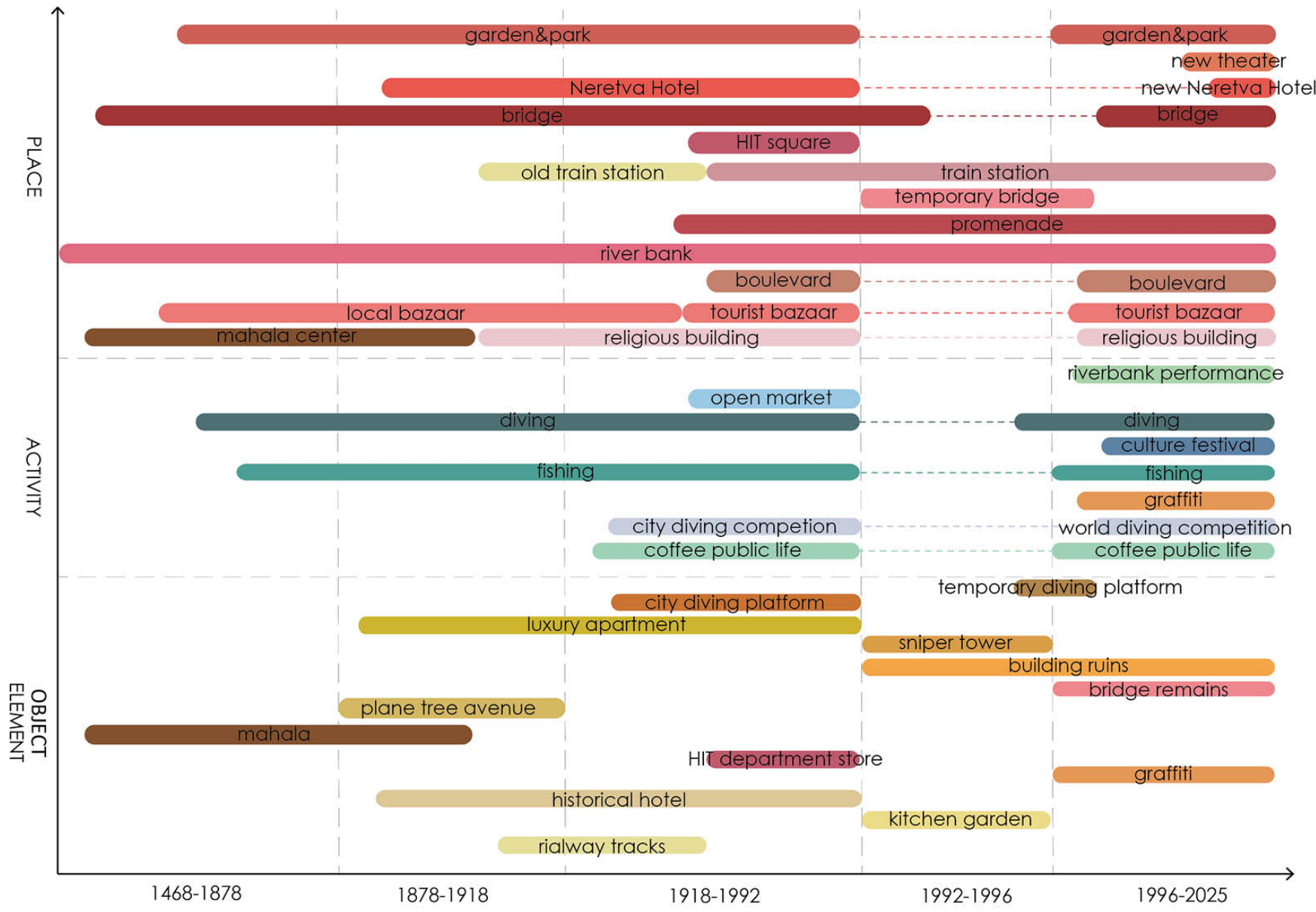


HIT square before the war

HIT square now



carriers of memory----the symbolic language



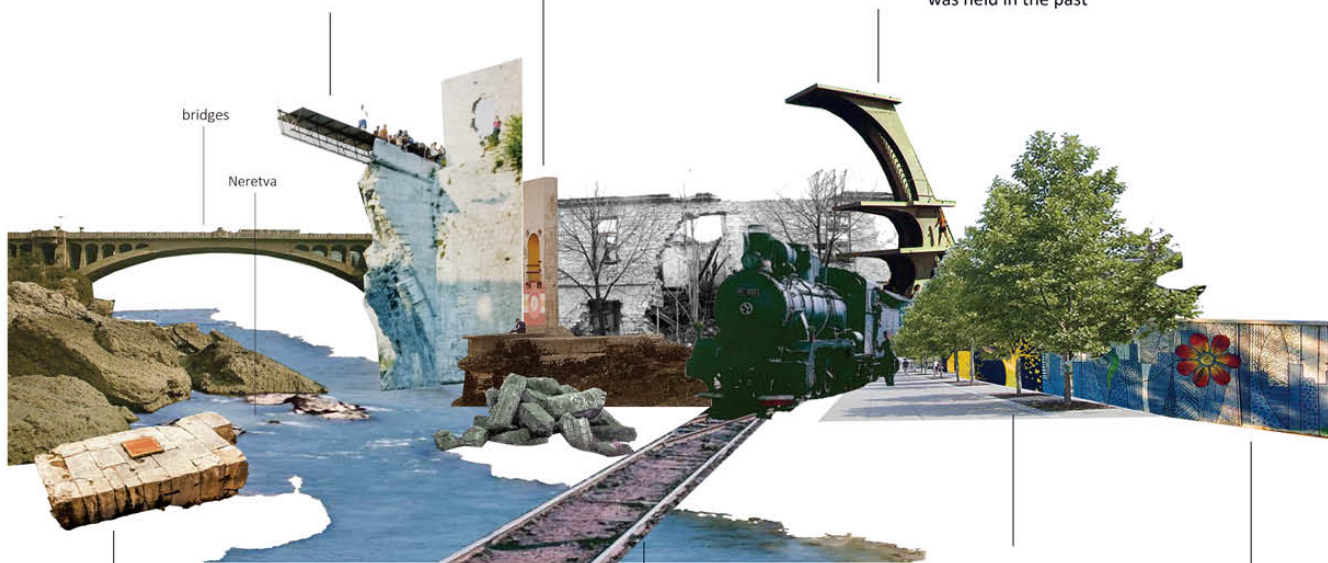
carriers of memory----the symbolic language

3. after 1992 bridges were ruined, new temporary bridges were built at different site. many only left basement construction today, but the Bunur Bridge, pedestrian bridge right now, is the only one turn into a permanent bridge. ▶



2. after the war when the Old Bridge was demolished and before there was a stand-in bridge, there was a springboard from which people could dive into the river.

5. diving platform in city swimming pool, where diving and swimming competition was held in the past



1. Some old pieces of the original bridge now lie at the pebble beach and serve as places to sit. Bridge ruins/stones lay out on the bank of the river, they appear to blend in with the landscape rather than call attention to themselves

4. after Austro-Hungary period, plane tree avenues became well-known feature of connecting town to the city, reaching to the center as well as future sports & recreation center and new parks

6. during Austro-Hungary period, industrial progress grew quickly, partly due to the important railway. Mostar as an important stop connected railway from Sarajevo to Dubrovnik ▼



7. graffiti on the wall made in Street Art Festival

bridges

Neretva

Mostar.

Stefanije-Allée.

Mostar.



*two border line
double potential & one reunion*

The image is a topographic map of a river valley. A central area is shaded in red, representing a 'border line'. Multiple red arrows point from both sides of this shaded area towards each other, indicating 'double potential' for reunification. The map shows contour lines, roads, and buildings, with a river flowing through the valley.

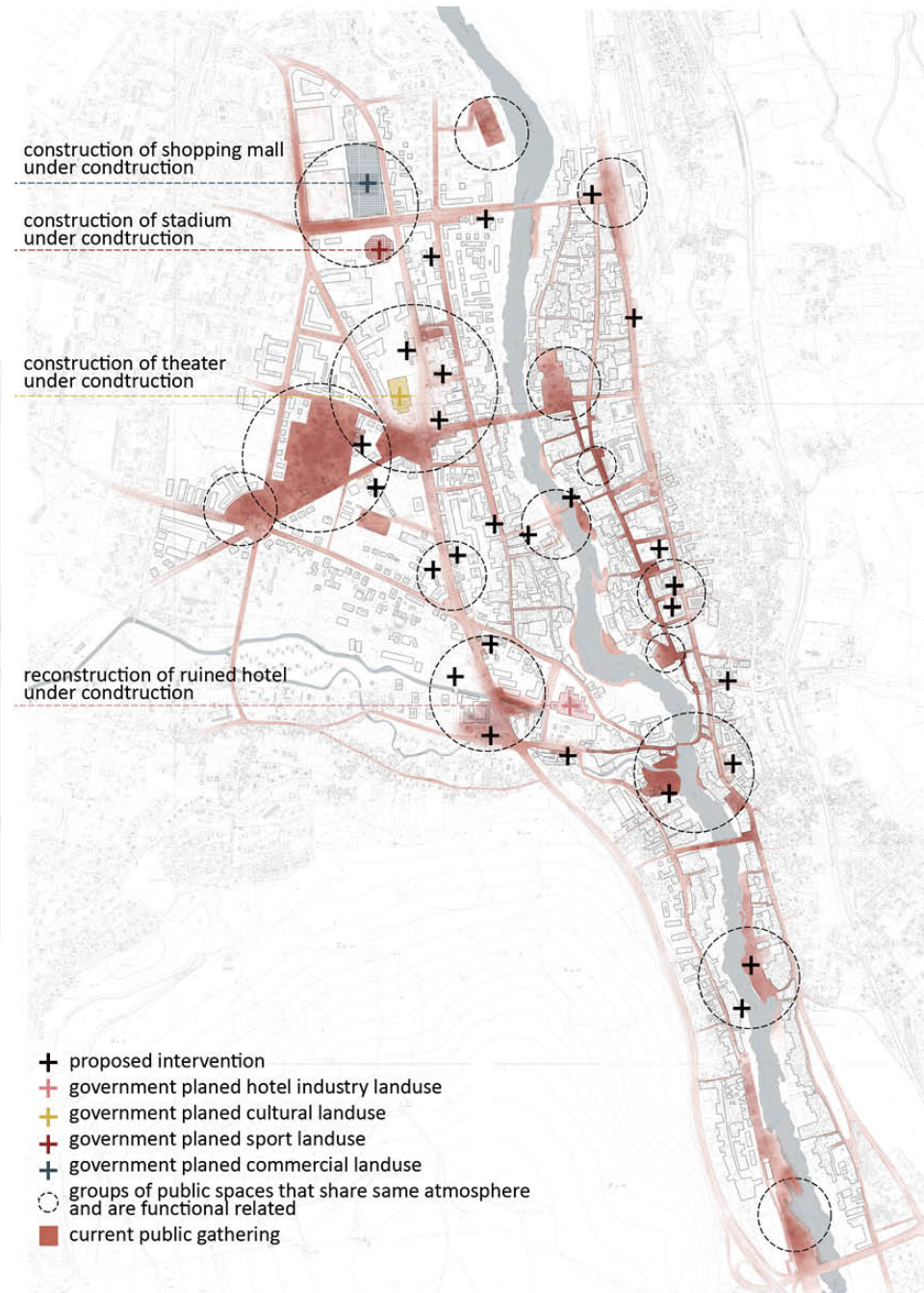
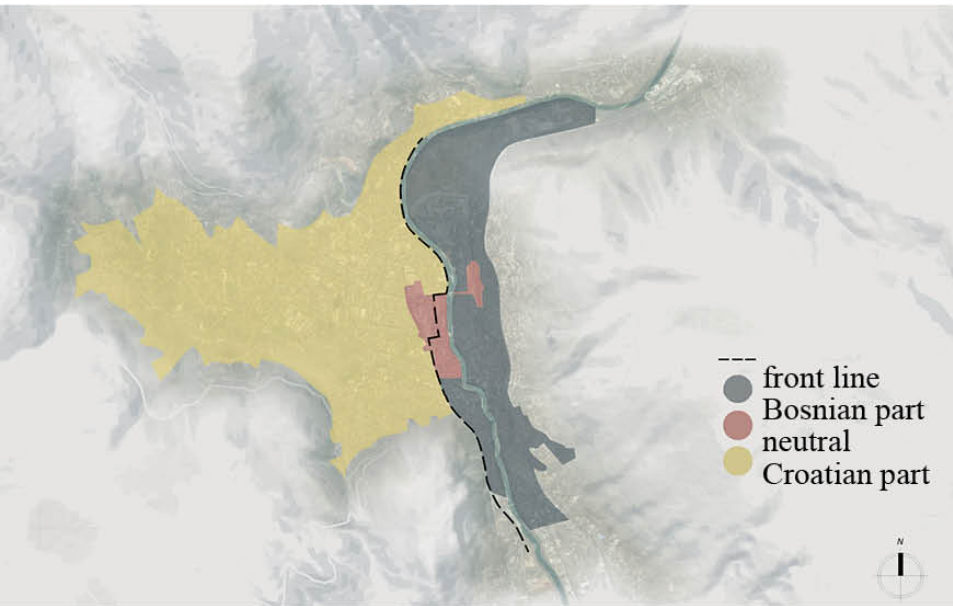
Two potential lines for reunion:

Break the border

breaking the border is for people to get out of one's religious and ethnic territory and communicate with other side;

Collection of collective memory

varrious spaces, activities and heritages on these two lines makes it a more pratical site to bring back memory.



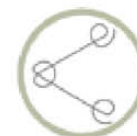
PUBLIC SPACE



history and memory visualization



multiple activities



public space continuity



complete missing piece

aim to keep the complete volume of the ruined buildings, emphasising the space as architectural space.



emphasise exist piece

aim to highlight the remain ruins, exploring the historical value behind the ruins and invite people to form physical or visual connection with ruined piece.



young generation target

aim to create attractive and creative space for young generation to communicate, a platform for them to understand each other.



history education

due to large ruined area, places and buildings with historical value are not able to convey the related history to the public, the city and public should find back their past.



higher accessibility

more route should be opened to get the riverbank, cross the river and cross the neutral zone.



pedestrian friendly space

a pedestrian friendly network would invite more people to go to public space and also enjoy their street life.

03 Strategy & Principle



follow original pattern

when deal with the area ruined to the ground level, attention should paid to the original fabric pattern, aiming at recreating similar urban images.



use of material

specific materials can reflect to the events and objects in the past, using materials is a way to keep the memory of something.



interact with ruins

redesigned ruined area could be the new public space, and by interacting with ruins, people are gradually mitigate the fear memory of the ruined scene.



memory gardening

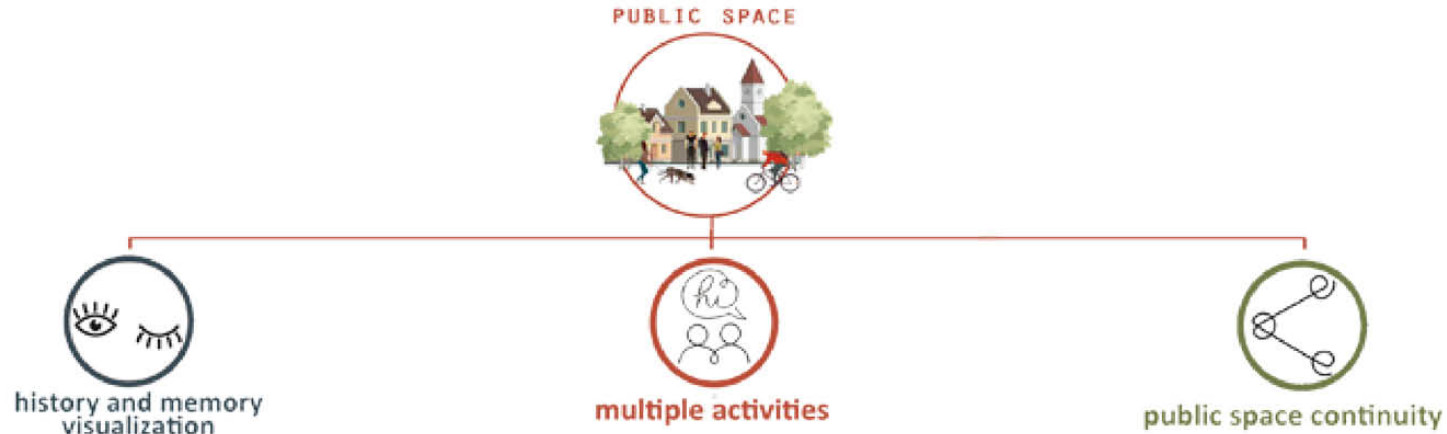
a moderate way to provide the public a monument for remembering the past, and also invite the public to participate and grow their own landscape.



more public space

more high quality public spaces are need to attract and guide people gether together.

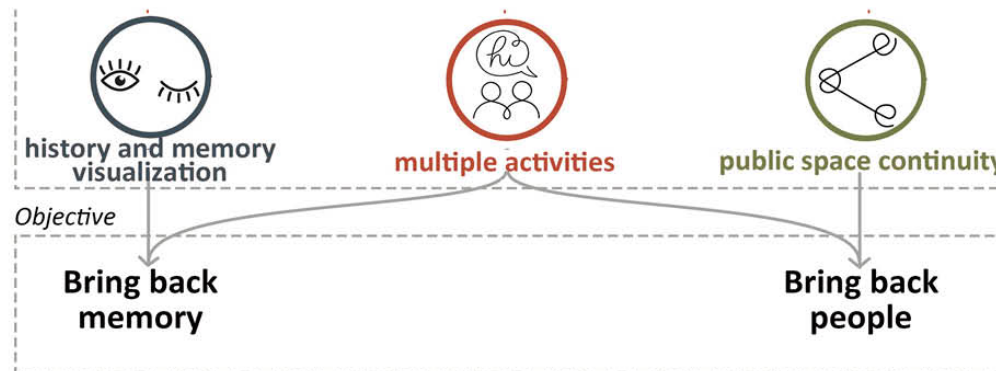
Toolbox---strategy



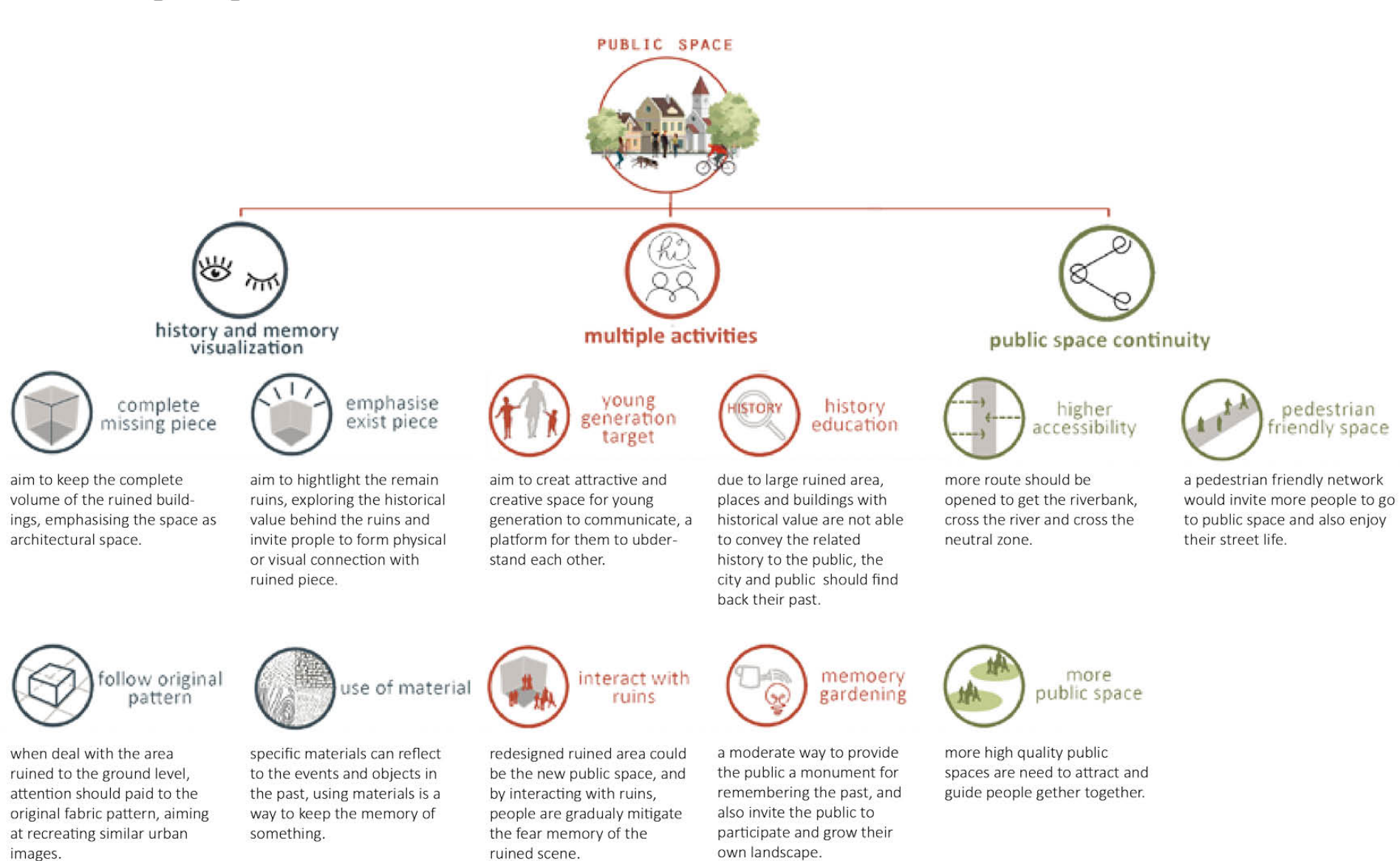
(Mental aspect) The public landscape would involve the narrative reflecting to the city history and public memory to help public rebuilt the connection and memory of the city. The way showing the narrative need be easy to understand, by which people can quickly evoke the memory and history and futher bring some thinking.

(Use aspect) Tradiitiional and new activities will keep attracting people and as these experiences are repeated, public spaces become vessels to carry positive communal meanings, the connections between individuals begin to be rebuilt again.

(Physical aspect) Public spaces should be easy to get to each other, locals should have abundant and accessible public spaces to go to. In a long run, the continuously connected public space network would gather and lead people to step over the mental division line.



Toolbox---principle



Monuments in the city



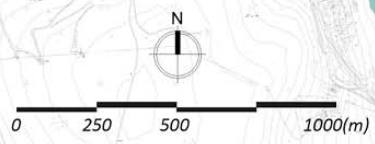
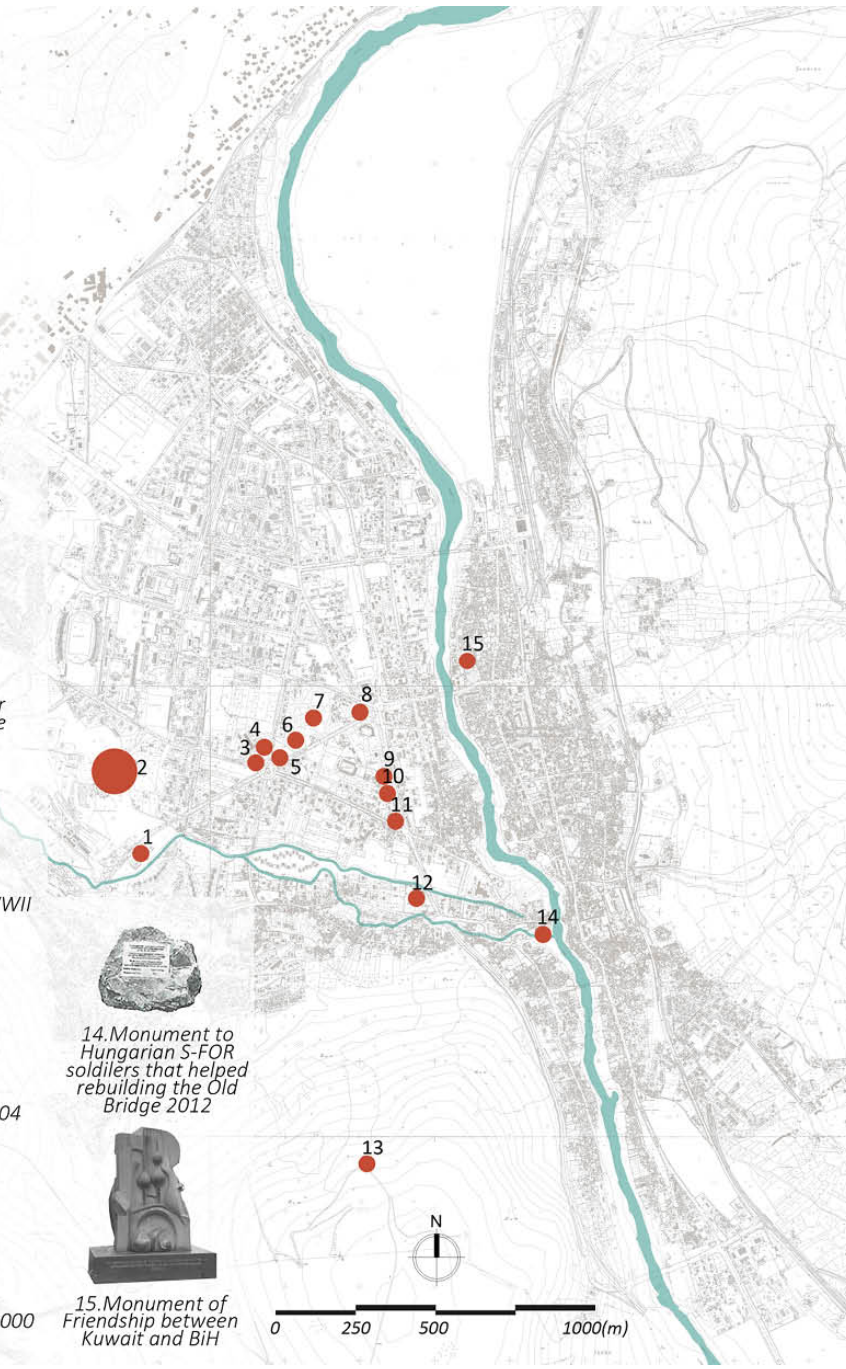
The Cross shows an implicit but inevitable control of the whole city



A bomb blast destroyed a monument to fallen soldiers of Bosnia's Muslim-dominated wartime army on the boulevard

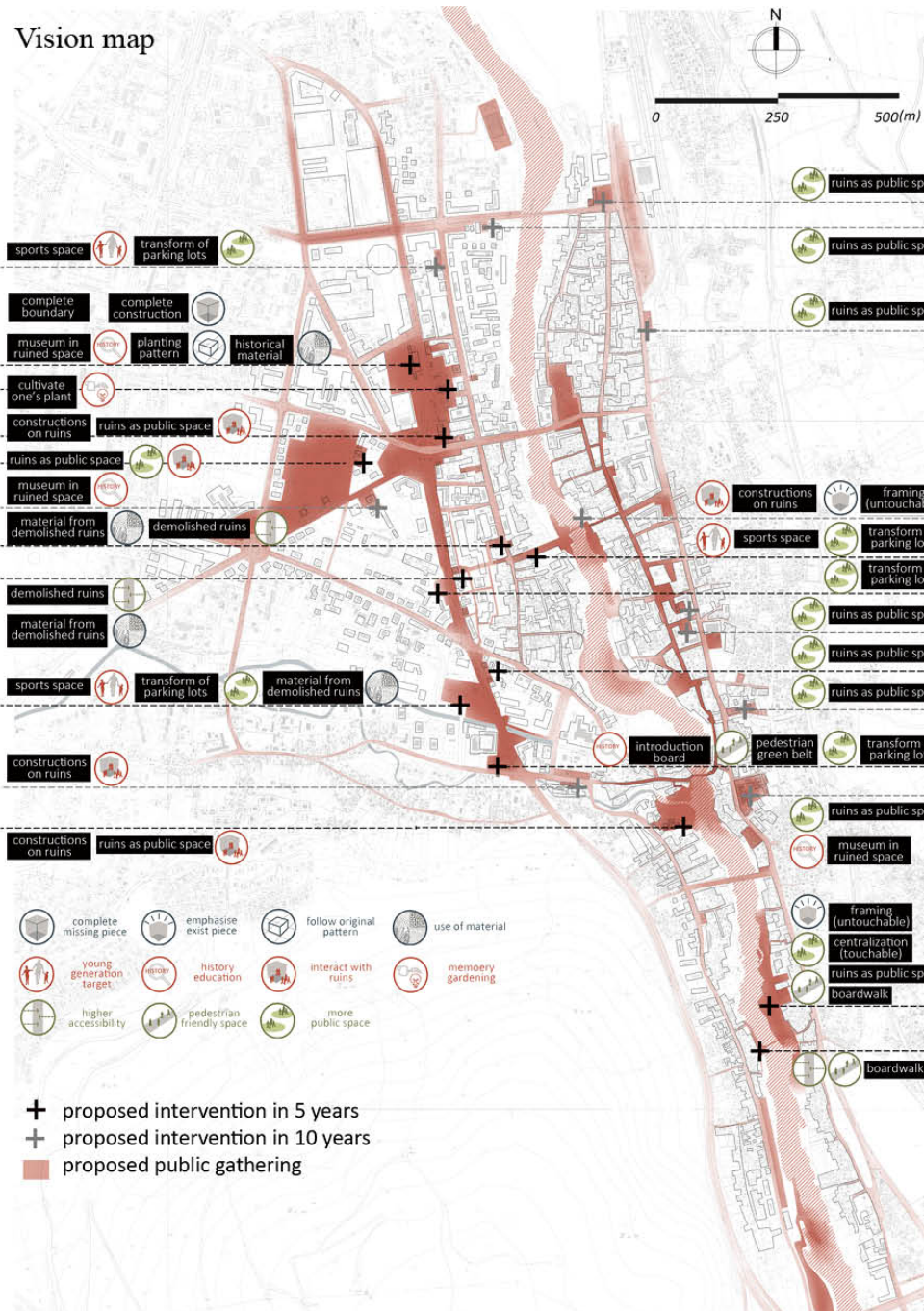
- 1. Catholic Cathedral 2014
- 2. Partisan Memorial 1965
- 3. Monument to the Fallen Croat Defenders 2004
- 4. Monument to Queen Katarina Kosaca Kotromanica 2005
- 5. Monument to Marko Marulic 2005
- 6. Bruce Lee statue as a symbol of solidarity 2005
- 7. The Friendship Fountain 2003
- 8. Monument for 18 killed Spanish 1998
- 9. Monument for fighters of the Bosnian Army 2012
- 10. Monument for the Croat Defence Council 2012
- 11. Antifascism Monument post-WWII
- 12. Franciscan Church 1872&2004
- 13. Jubilee Cross 2000

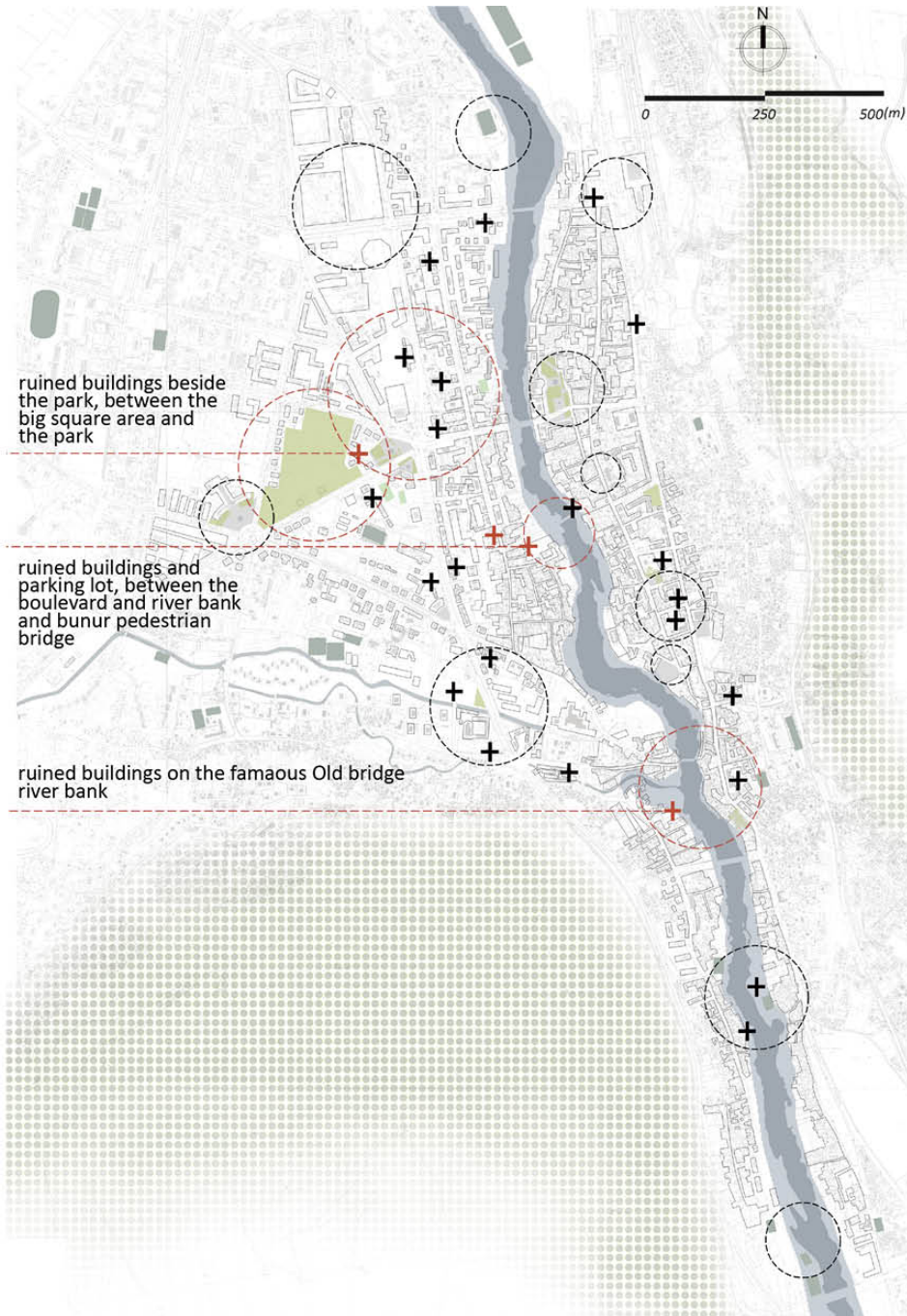
- 14. Monument to Hungarian S-FOR soldiers that helped rebuilding the Old Bridge 2012
- 15. Monument of Friendship between Kuwait and BiH





Vision map





material from demolished ruins

Materials like brick recycled from demolished buildings are reused for pavement of the path.



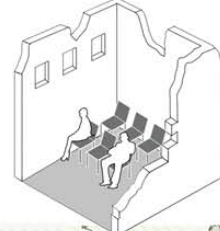
ruins as public space

The original structure of the beam is kept for vines and hanging plants.



ruins as public space

Based on the structure of the remained stairs, a new platform on the second story is added to the ruined building. A new stage area is created in the building for performance.



use of material



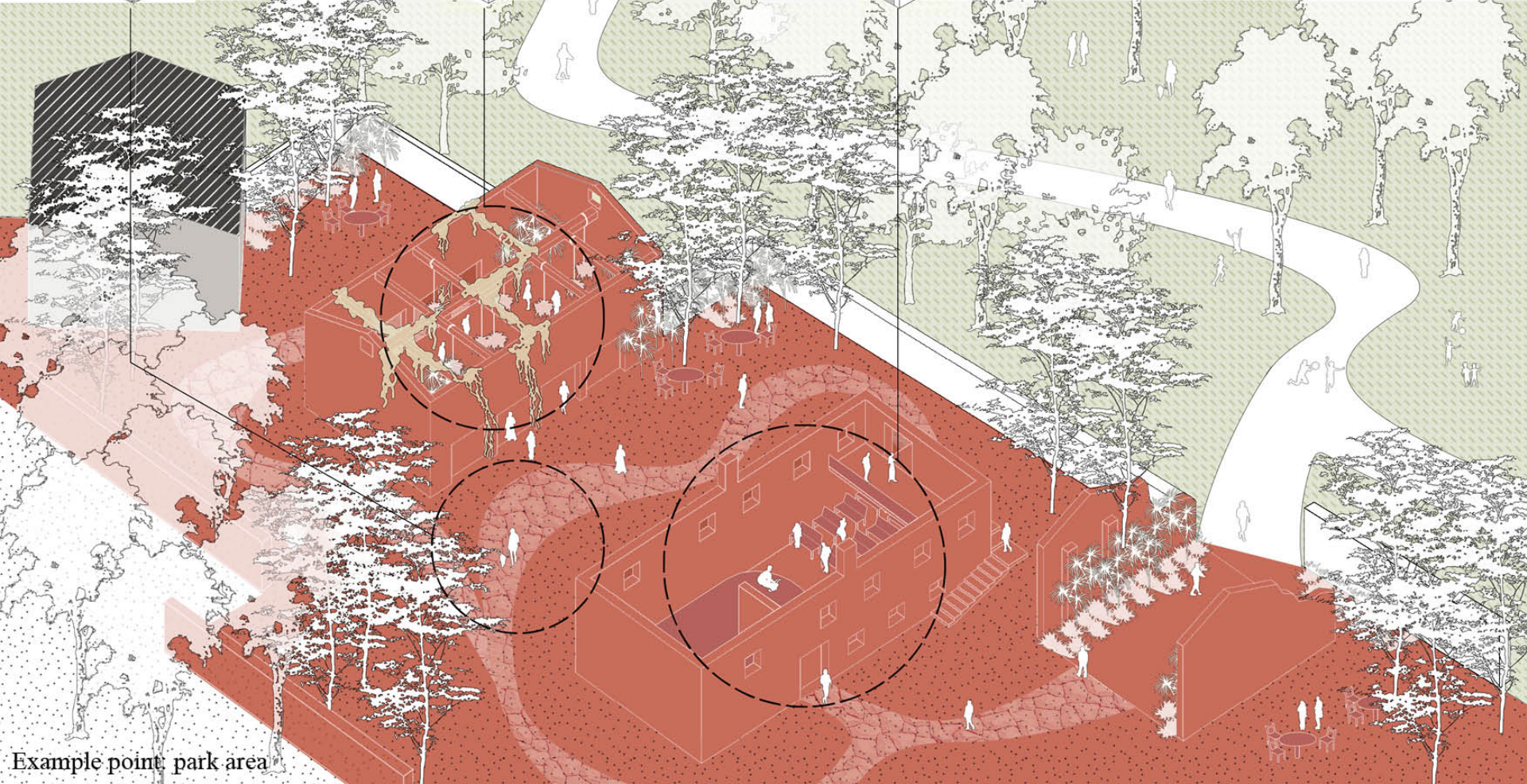
interact with ruins



memory gardening



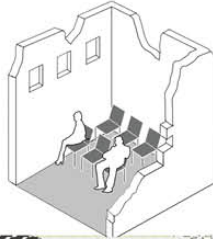
more public space



Example point: park area

demolished ruins

Ruined buildings are demolished to create more paths crossing this area for better connecting boulevard with the river bank.



ruins as public space

Currently, there are some pedlars on the sidewalk selling goods. The ruined constructure would provide a place for small market.



sports space

It is now a strip shaped parking lot, but it is better used as public space to attract more people to the river bank and cross the bridge.



use of materia



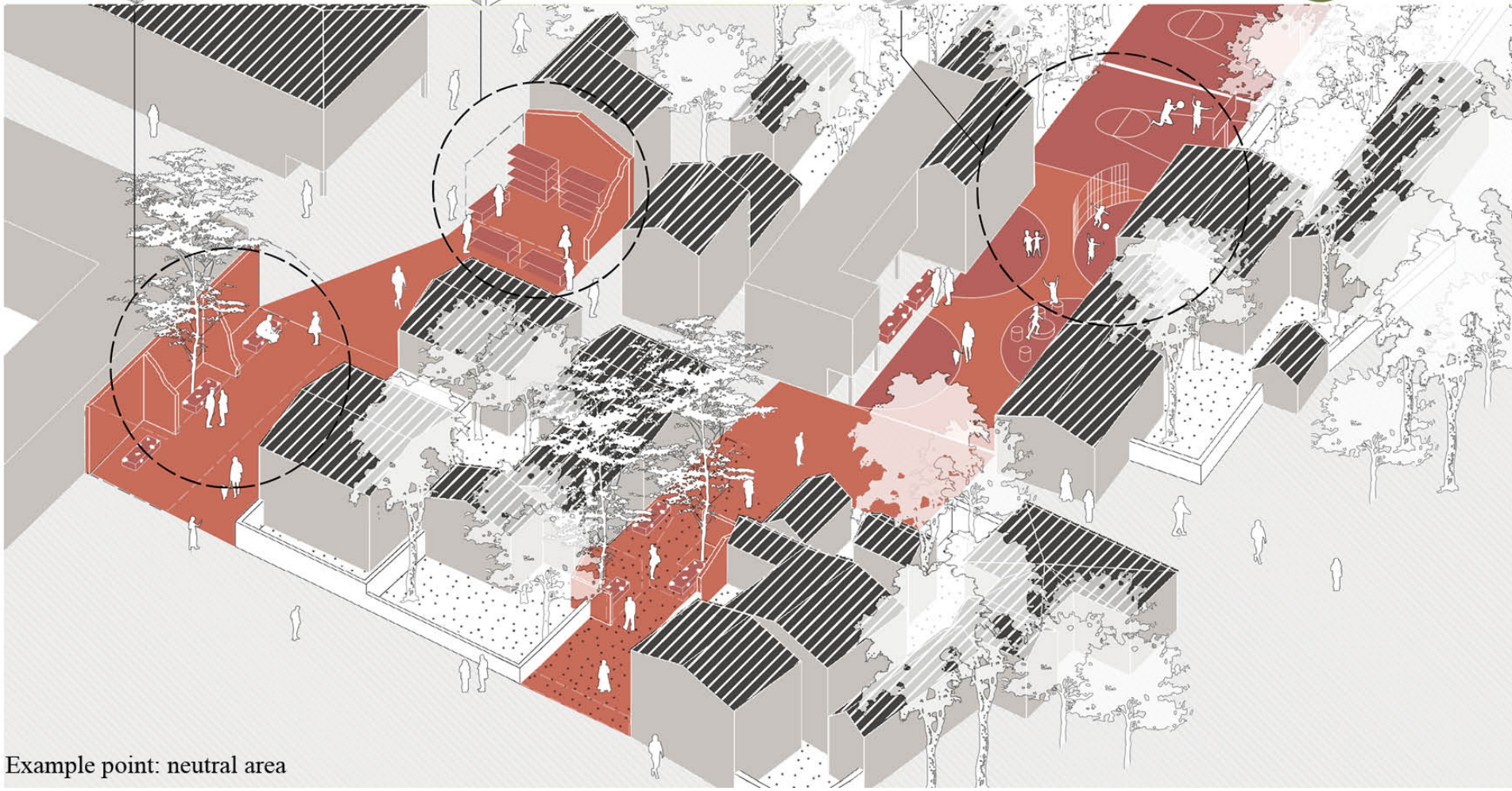
young generation target



higher accessibility



more public space



Example point: neutral area

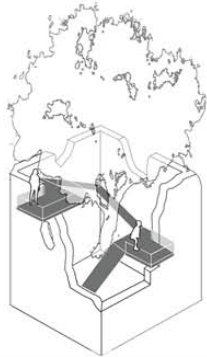
ruins as public space

Room with vegetations to create public and private sitting place.



constructions on ruins

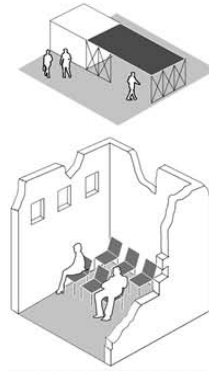
Platforms on different height and direction provide the places to have a sight view of the old bridge area panorama.



complete constructure

ruins as public space

The ruined building is repaired and a new construction is added to the roof part. This building contains a big open space that can be used as exhibition or perform area.



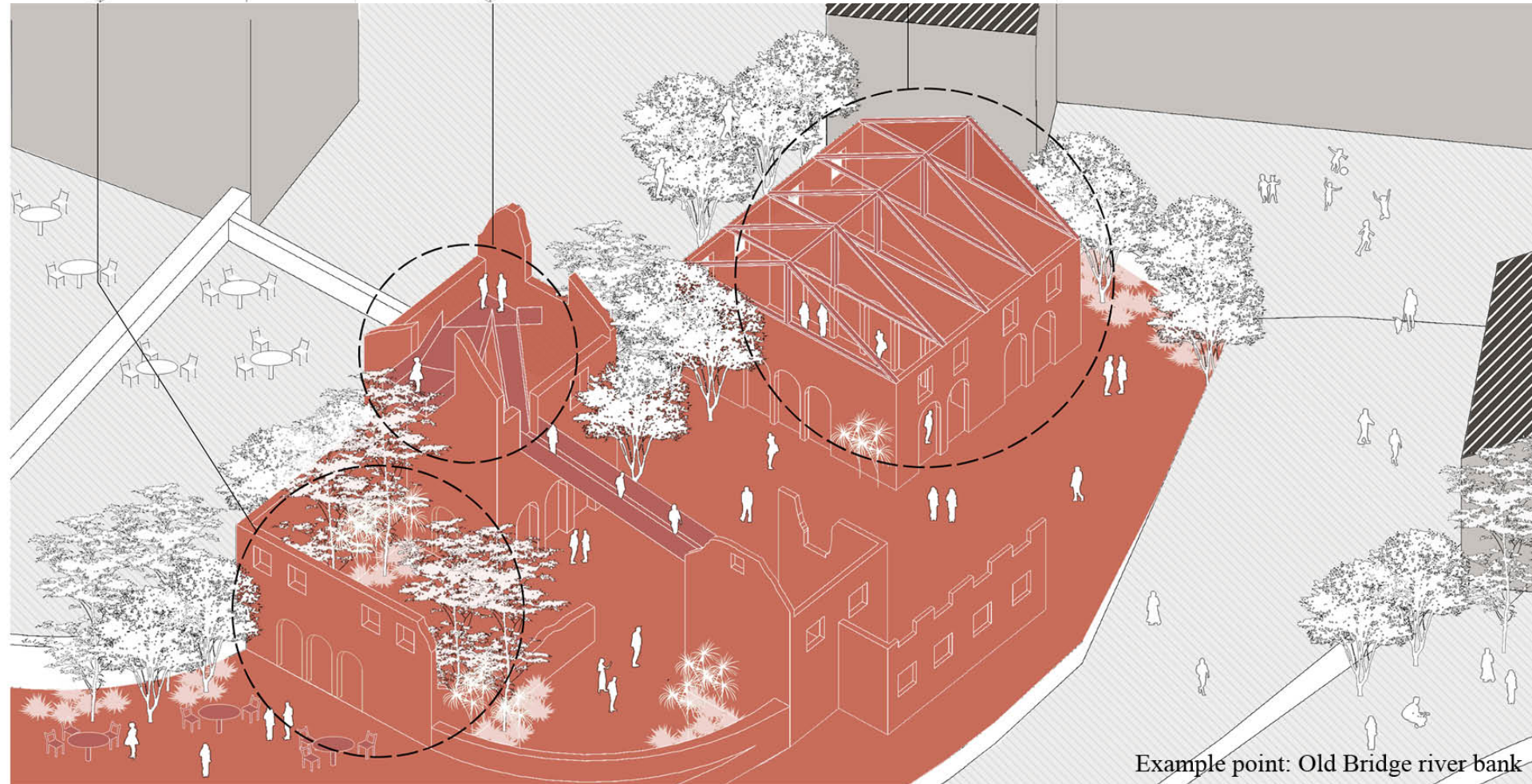
complete missing piece



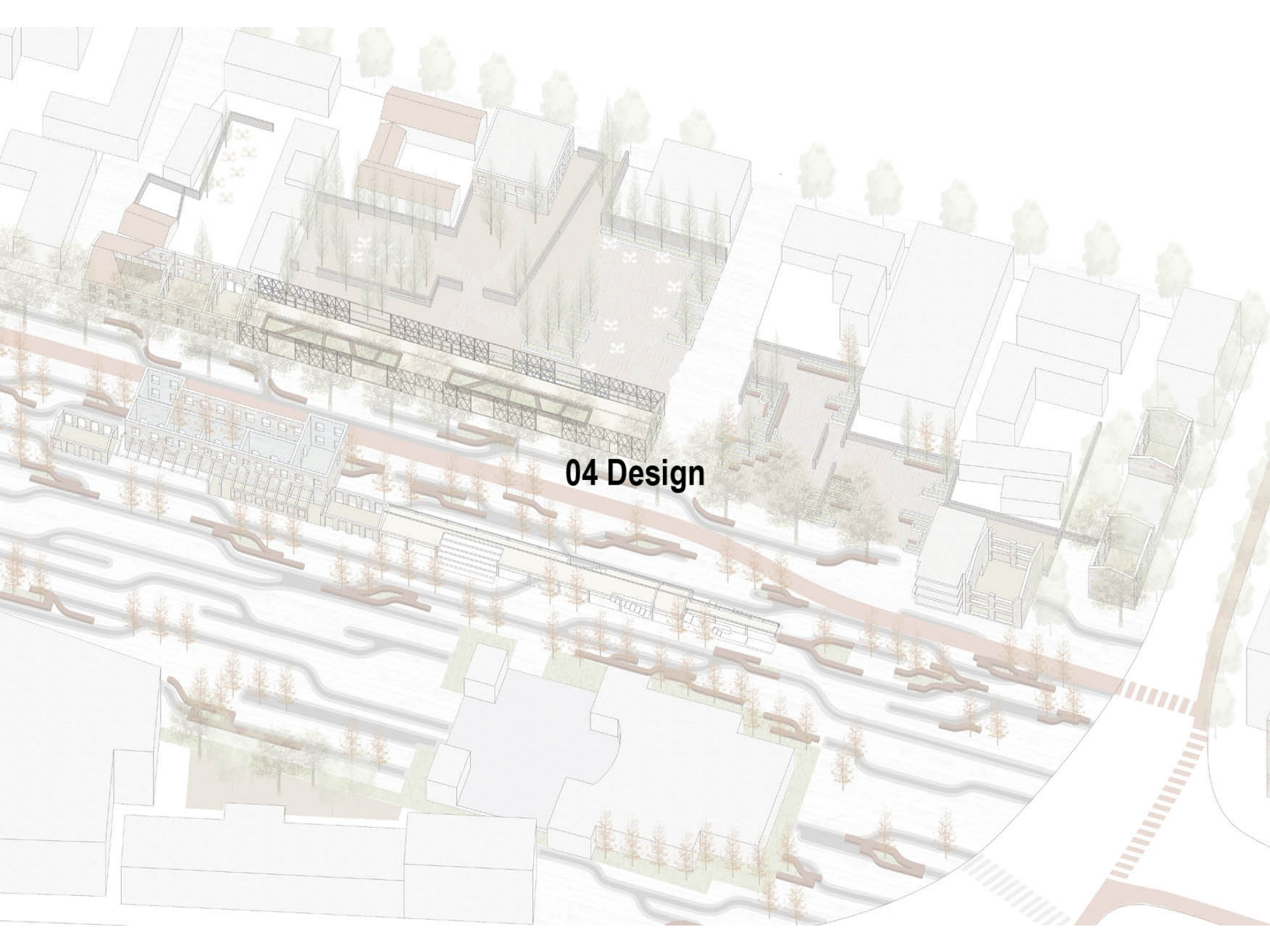
interact with ruins



more public space

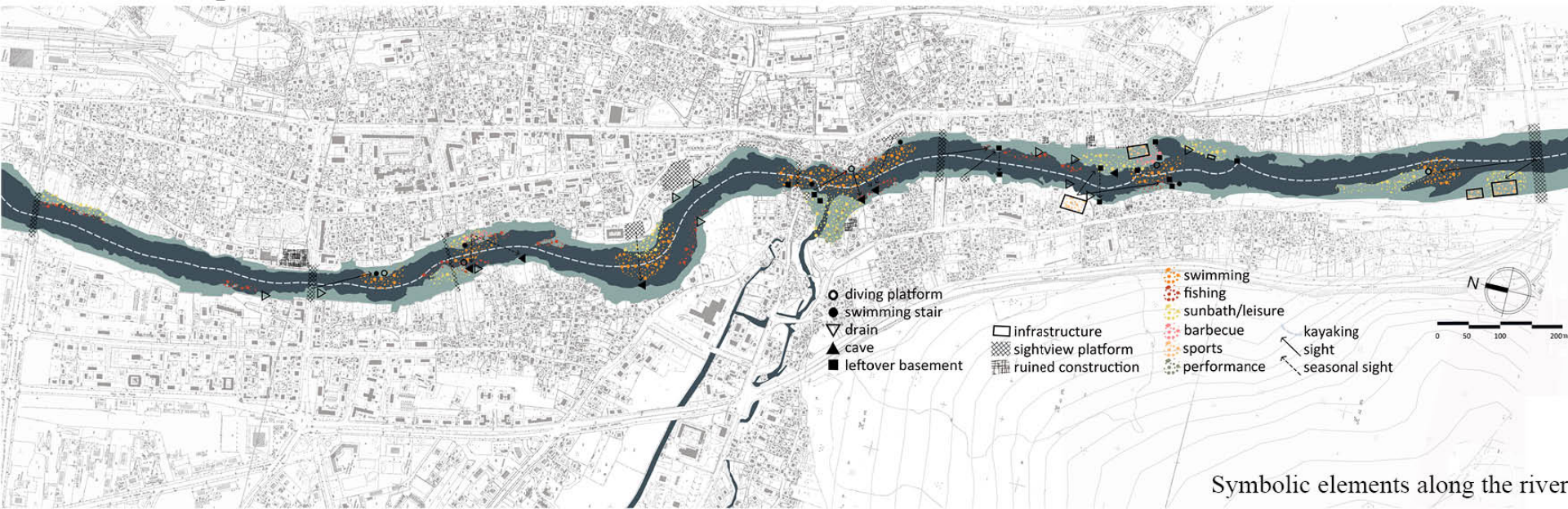


Example point: Old Bridge river bank

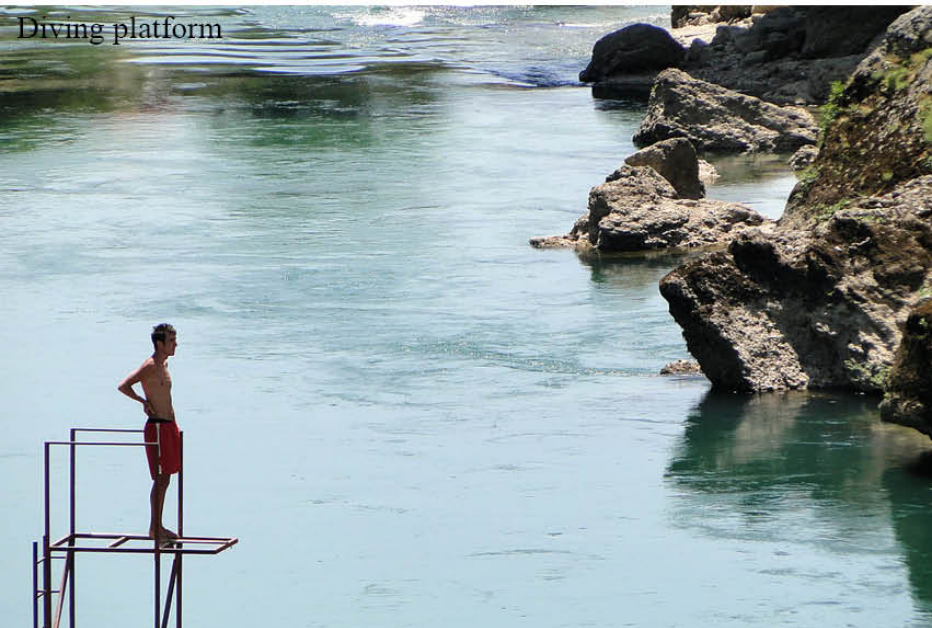


04 Design

River bank----potentials



Diving platform



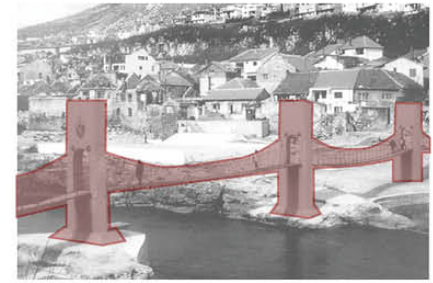
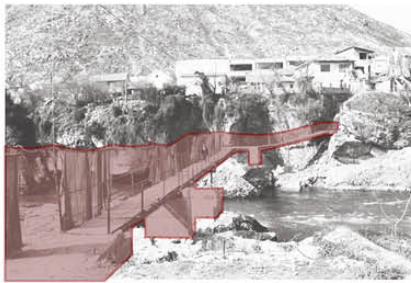
Cave



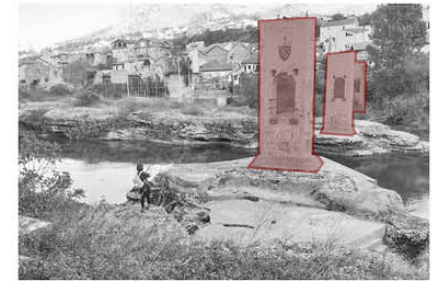
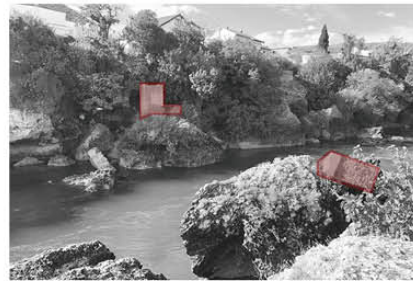
River bank----Donja area



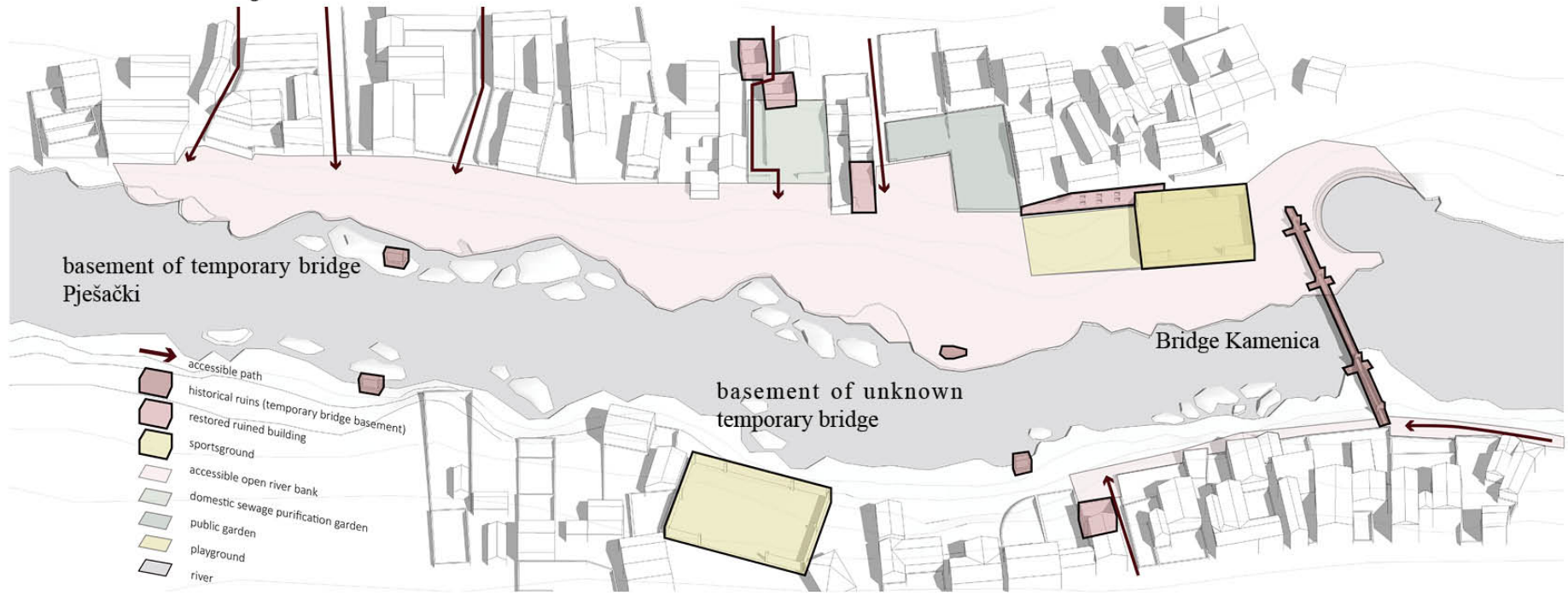
1992-1994



2019

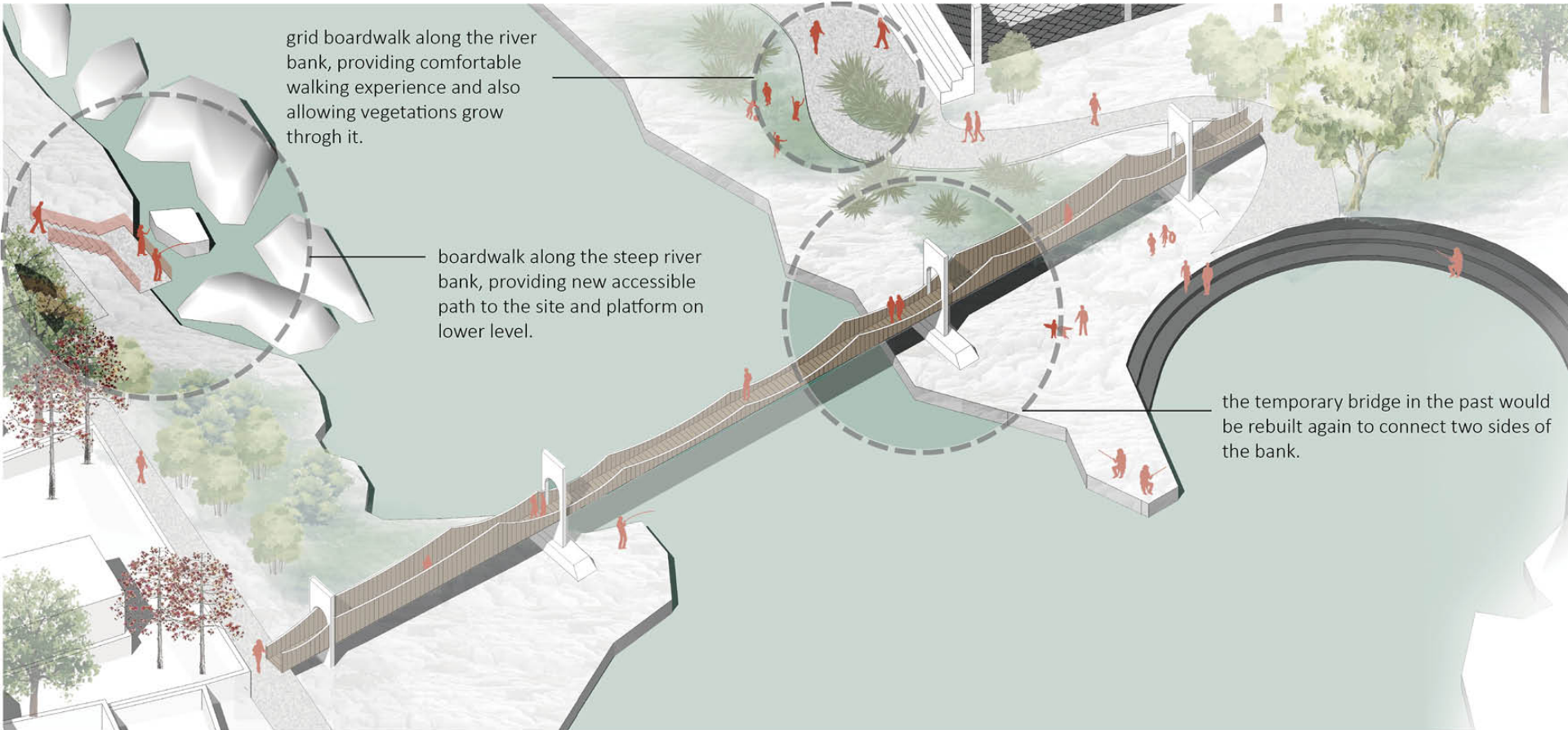


River bank----Donja area

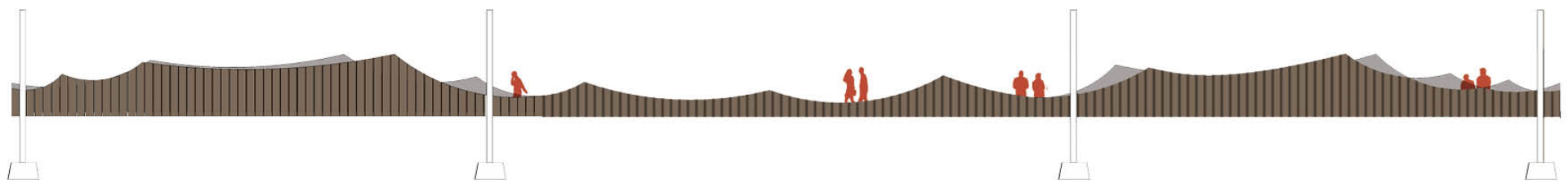


Proposed design in Donja area

River bank----Donja area



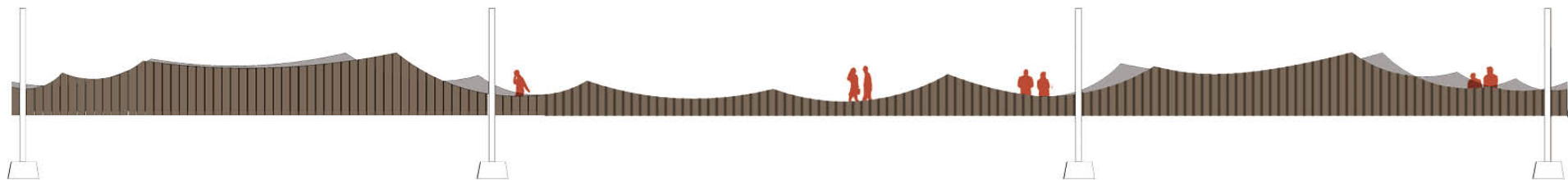
Reconstruction of Bridge Kamenica



River bank----Donja area



Reconstruction of Bridge Kamenica



Boulevard----potentials

west boulevard



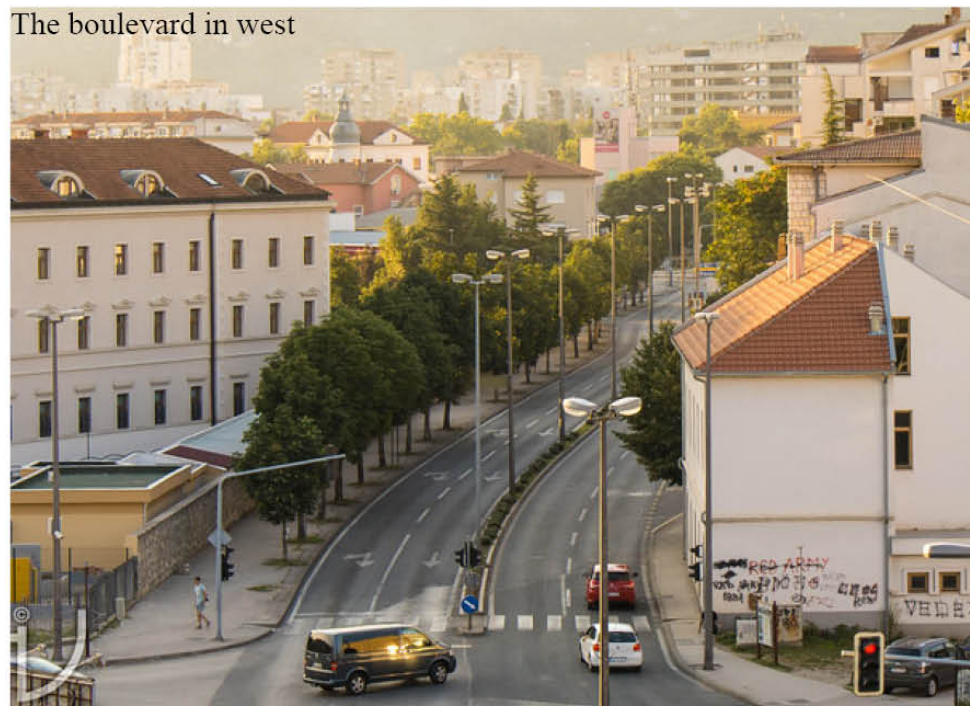
east pedestrian



- cemetery
- religious
- resident
- public service
- commerce
- recreation
- education
- sports
- culture
- institution
- hotel
- wall
- fence
- ⊠ outside coffee seat
- ⊠ abandoned area
- ⊠ green belt

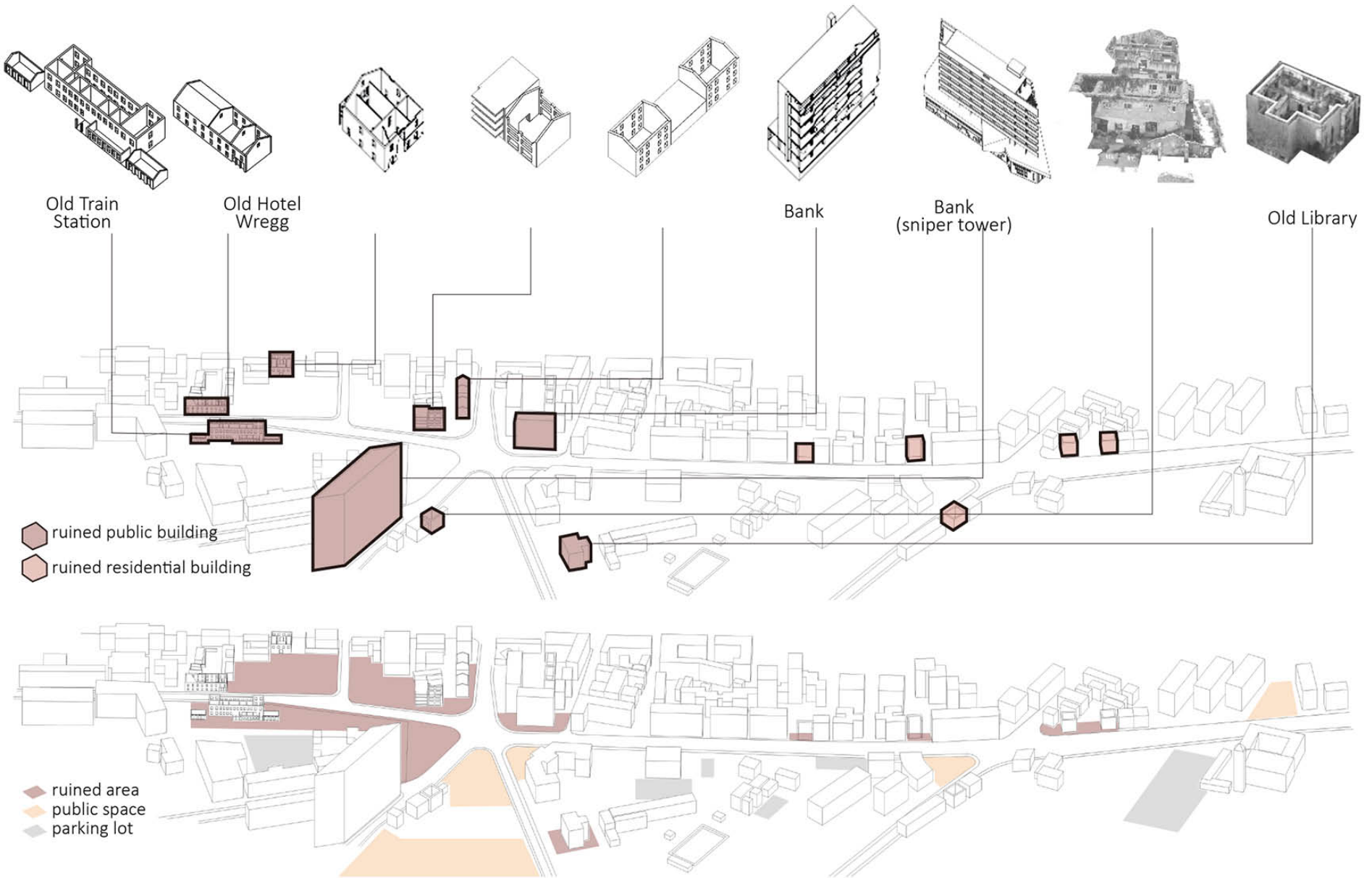


Pedestrian street in east



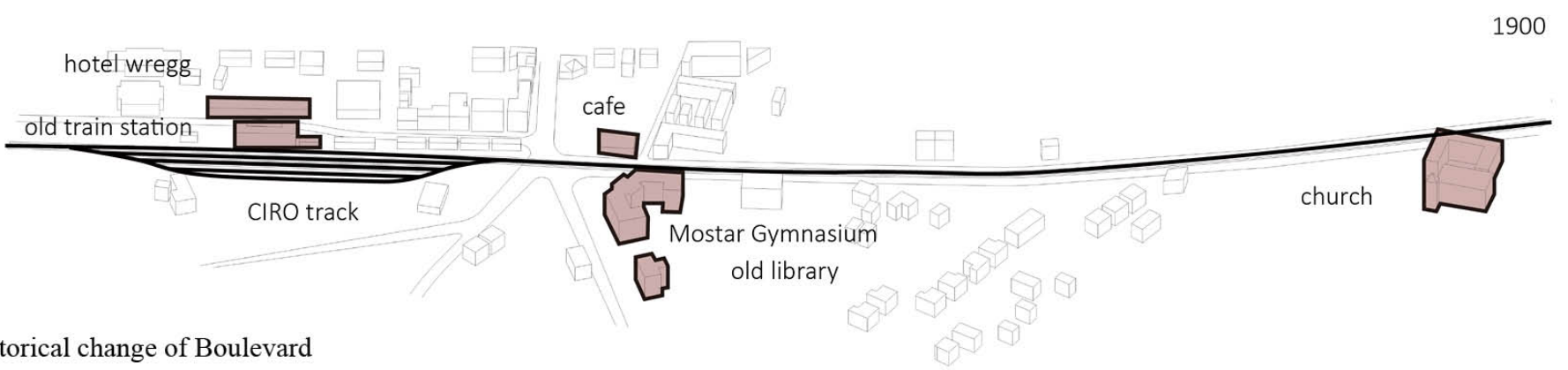
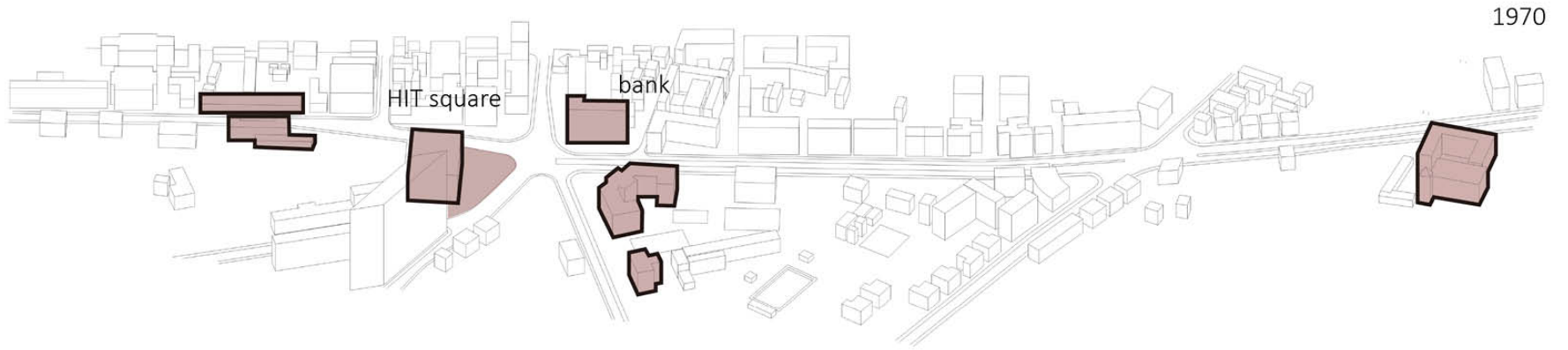
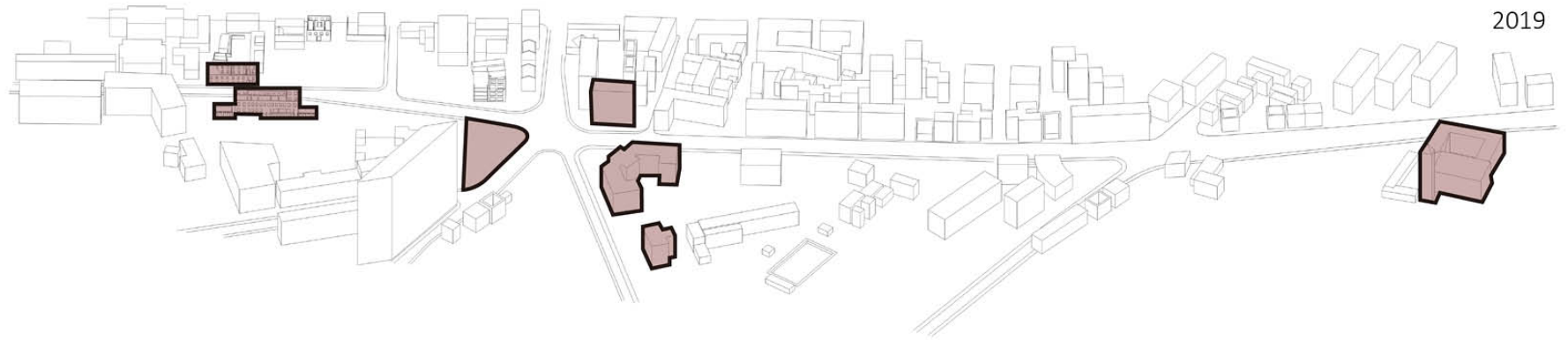
The boulevard in west

Boulevard---potentials



Ruins and current land use on Boulevard

Boulevard----history



Historical change of Boulevard

Boulevard---history



CIRO Railway

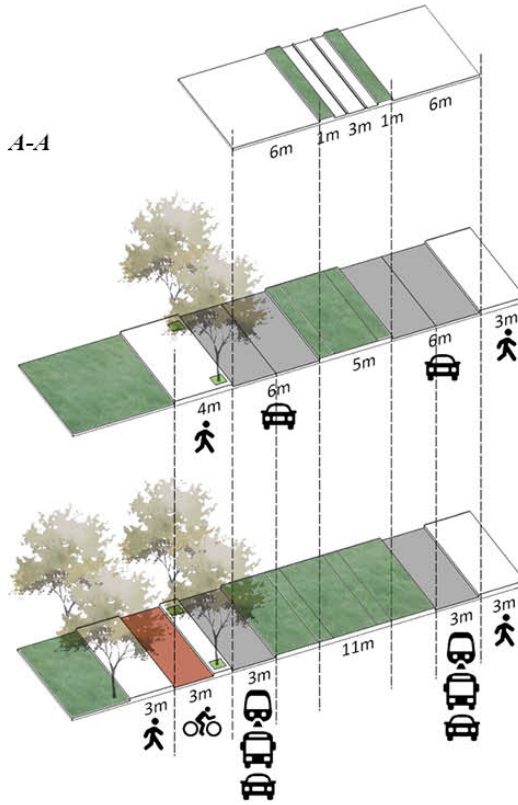


CIRO bike route scenery

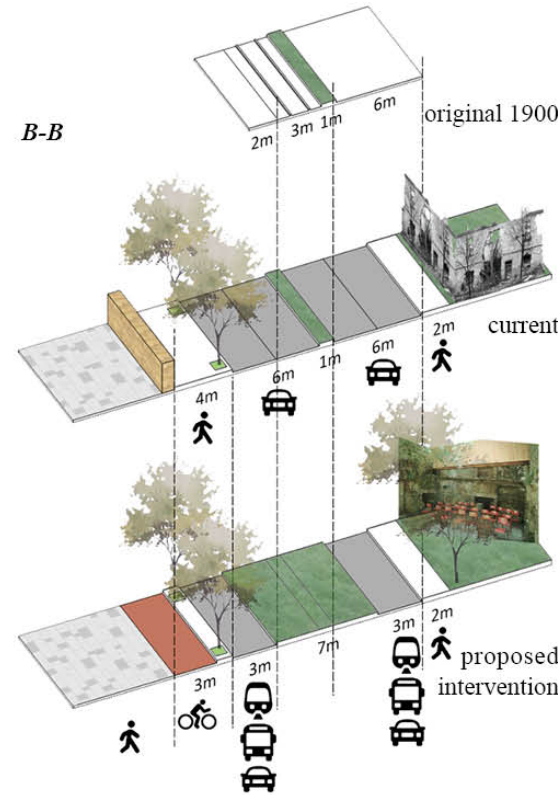
Boulevard----pedestrian network



A-A



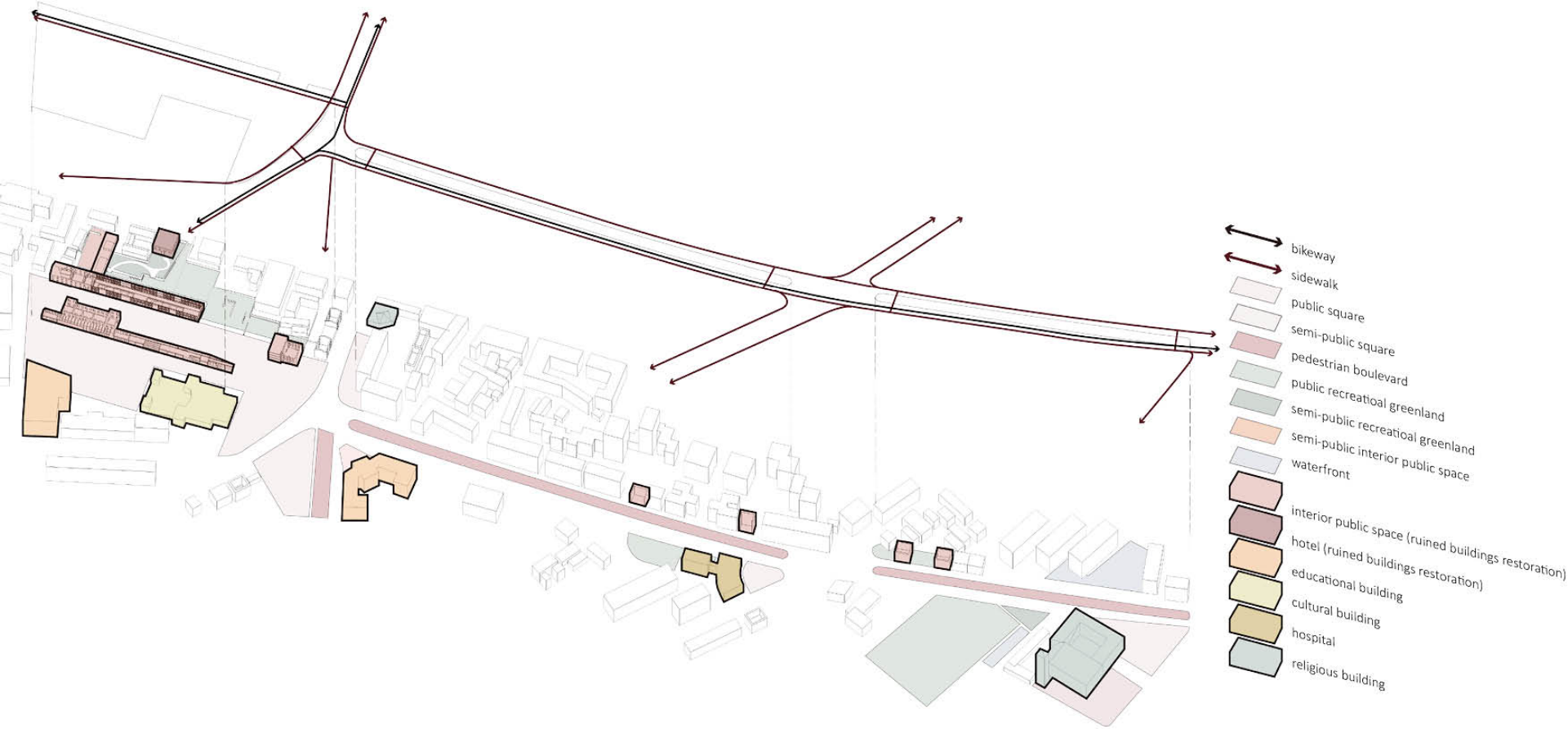
B-B



Boulevard section transformation

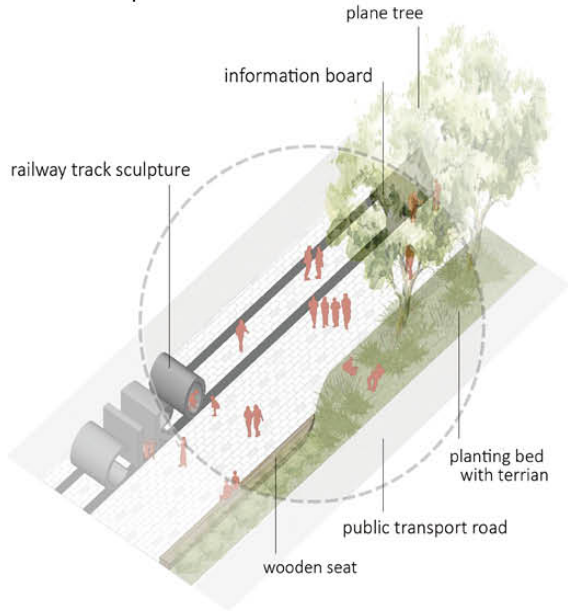
- 1) a better pedestrian network
- 2) following the "CIRO bicycle route" project, creating a fluent bicycle route towards the old train station.
- 3) re-playing its historical, cultural and social role as central public spaces

Boulevard---pedestrian boulevard

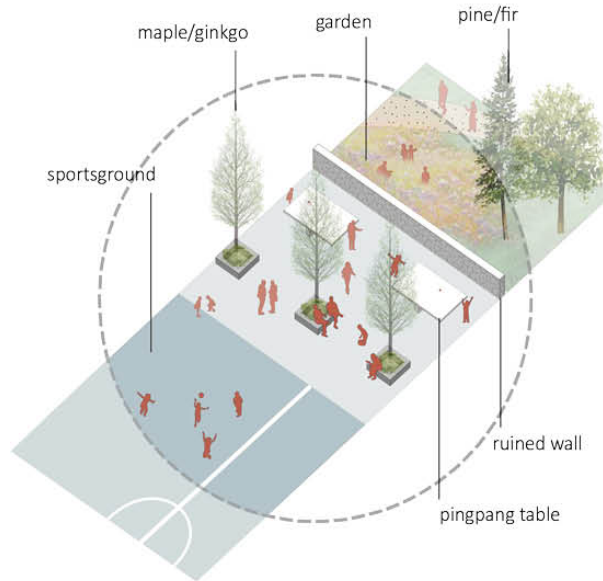


Boulevard---pedestrian boulevard

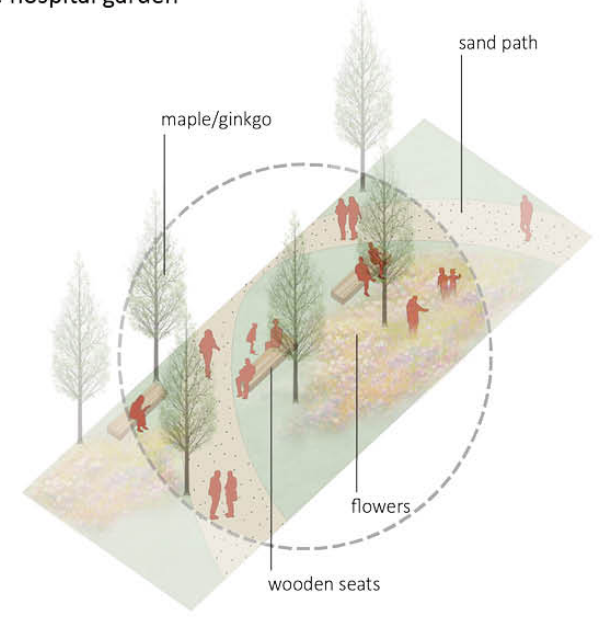
A track sculpture area



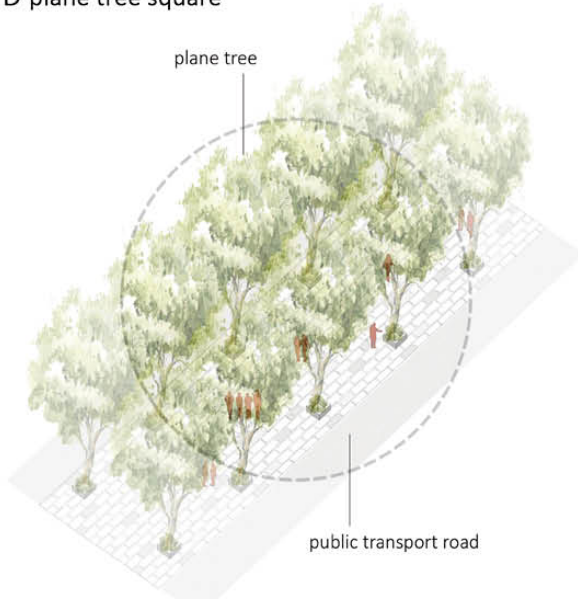
B sportsground



C hospital garden



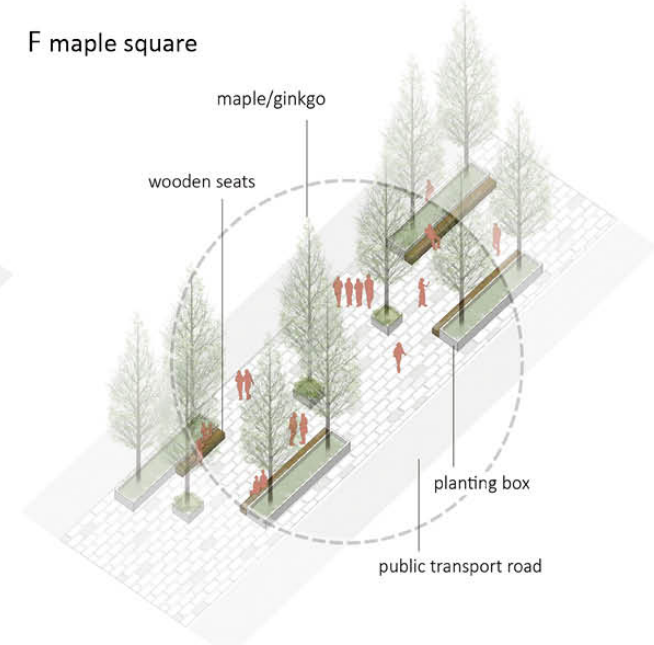
D plane tree square



E kids playground



F maple square

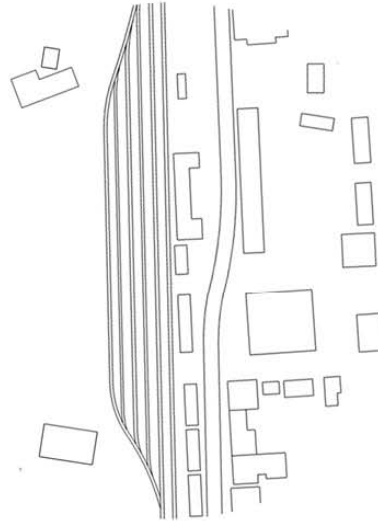


Boulevard---pedestrian boulevard



CIRO railway

+



CIRO track at
old train station

=

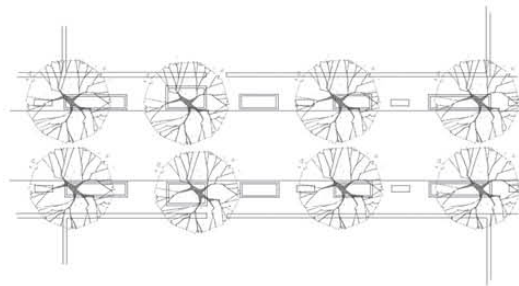


proposed
pavement pattern



planetre line

+

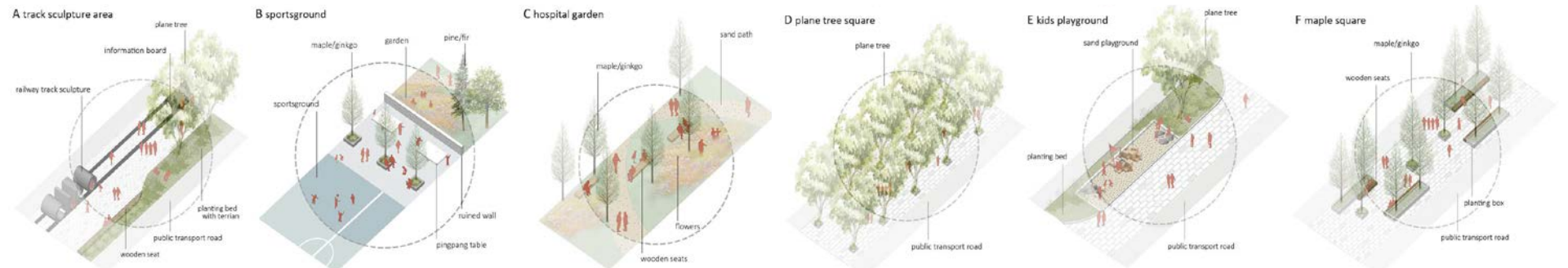


planetree line at street

=



proposed
planetree line



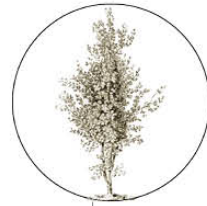
Boulevard---pedestrian boulevard



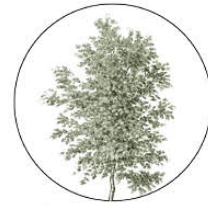
fir/spruce/pine



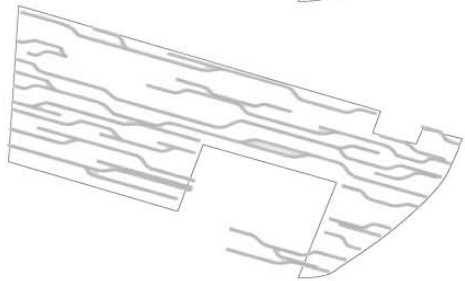
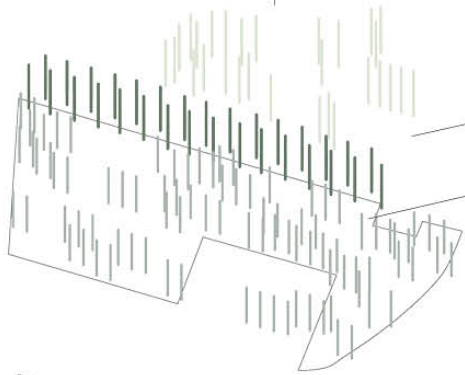
planetree



maple/ginkgo



oak

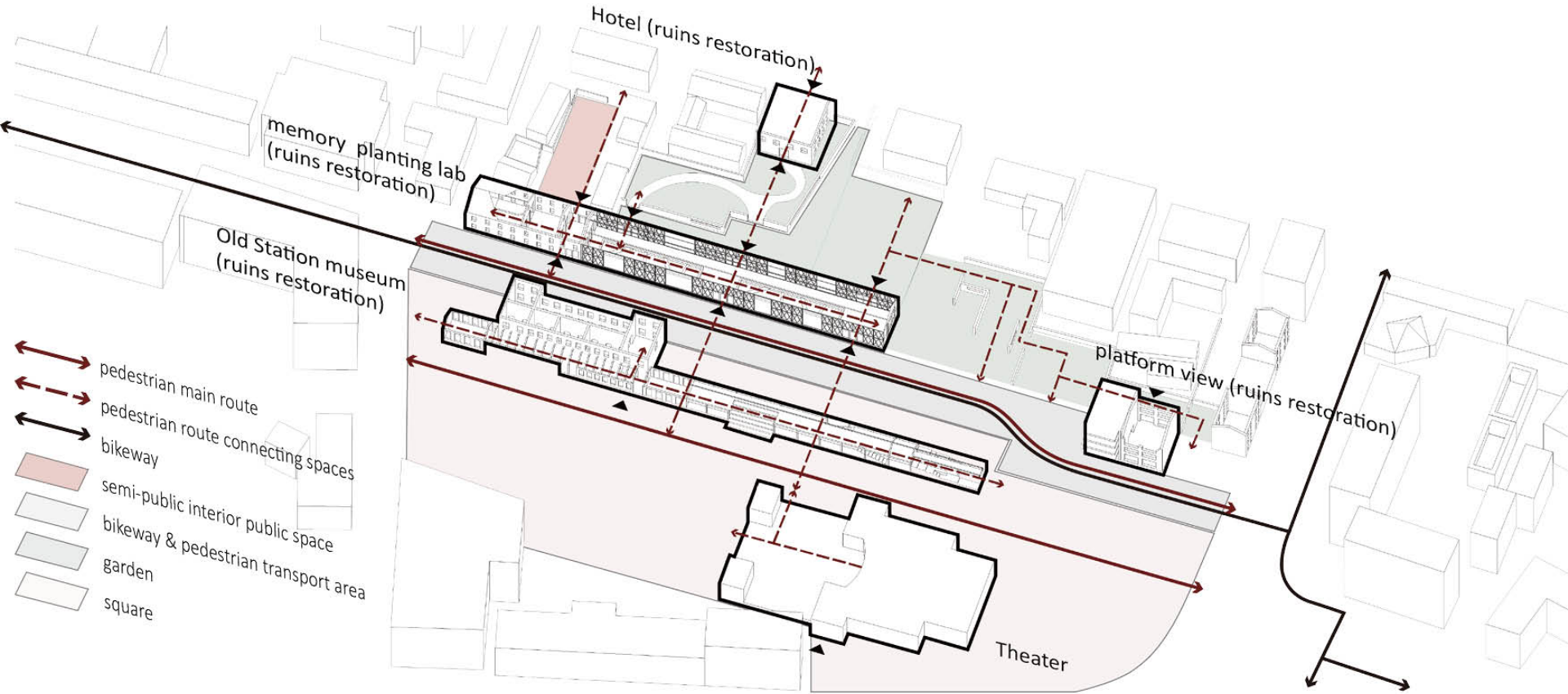


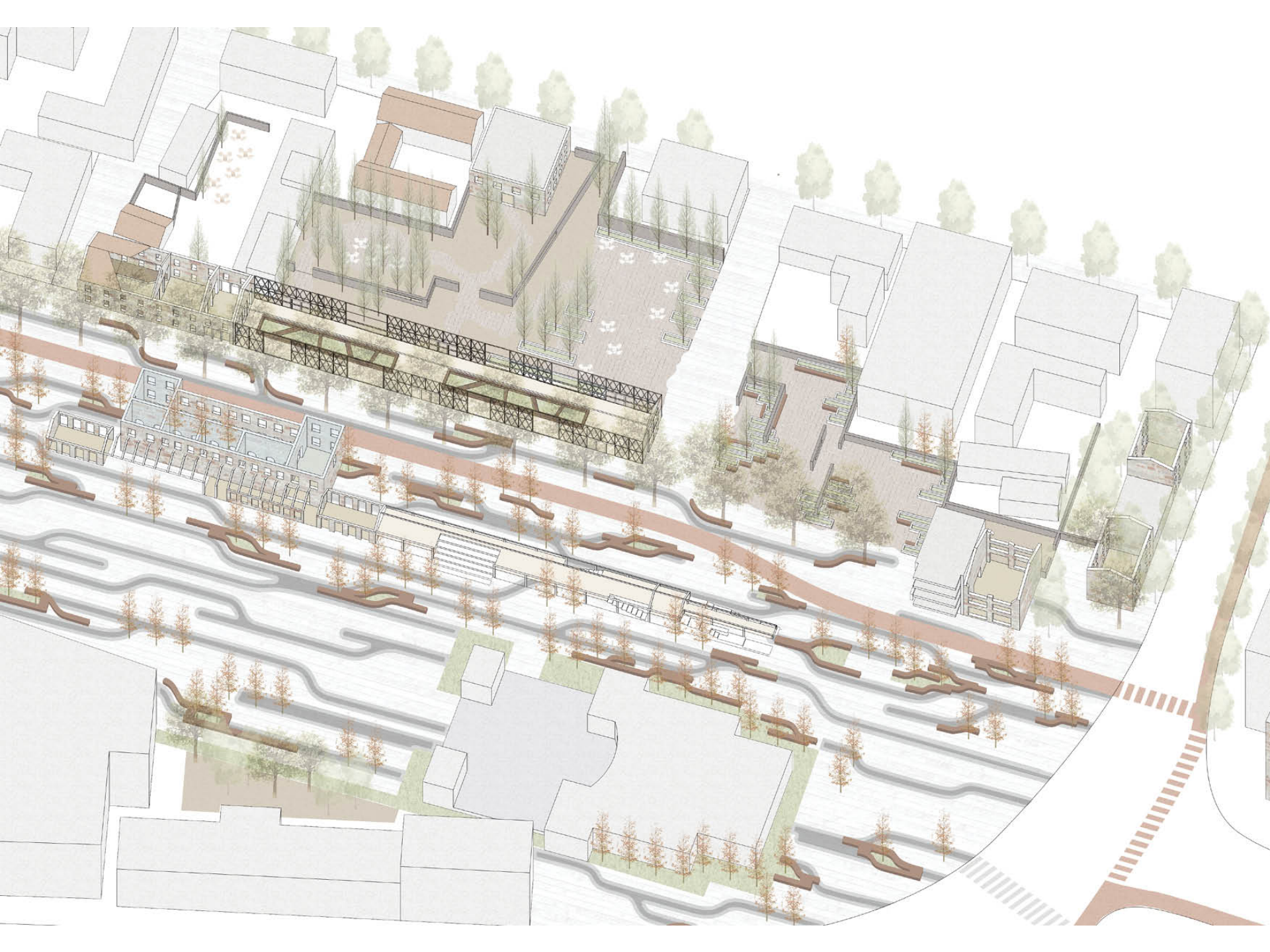
planting scheme



pavement pattern

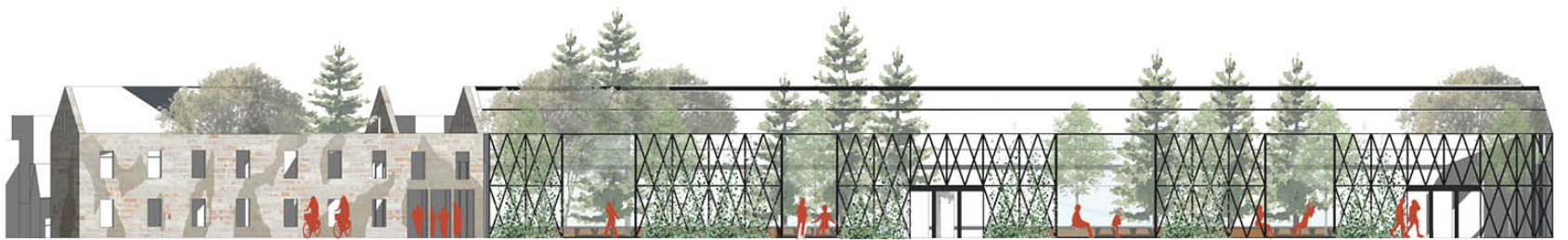
Boulevard---pedestrian boulevard



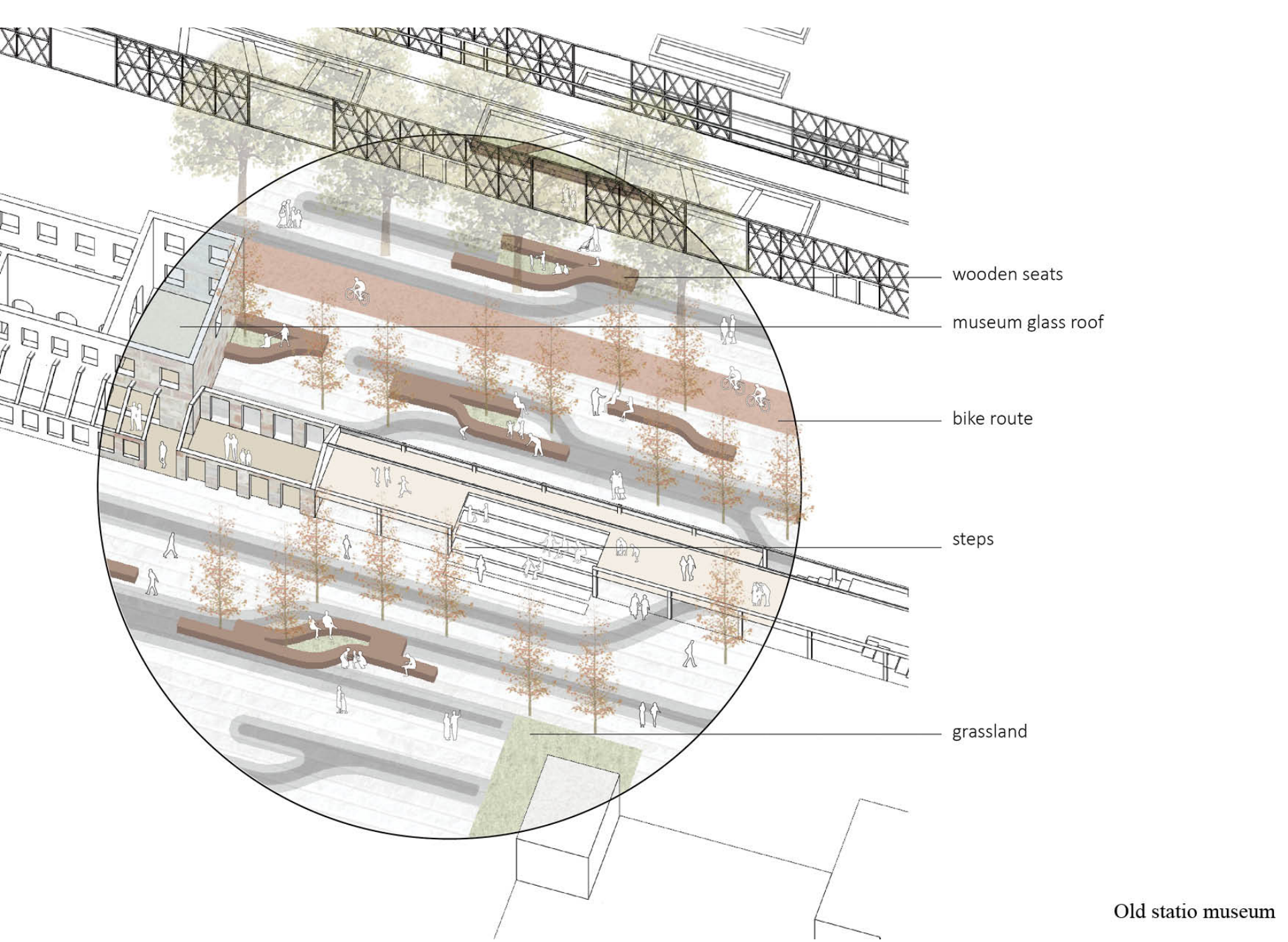




Old station museum section



Planting lab section



wooden seats

museum glass roof

bike route

steps

grassland

Old statio museum

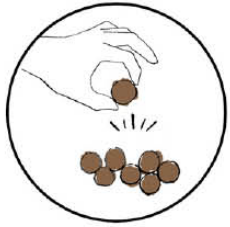


Old statio museum



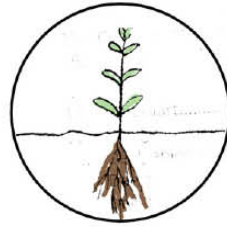
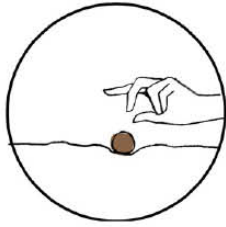
Memoery planting lab

Memory Planting Step



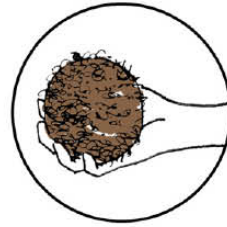
Step1

Pick a seed ball from the marked seed box. The seed you choose might represent your emotion and memory during the past period: before the war till now.



Step2

Watering it and wait for its blossom. You can use the flower/leaf/fruit of your plant to make tea that treat with the memory emotion and feeling.



Step3

After the planting bed is full with plants you may chose to make your plant a hanging plant hanging on the steel structure of the wall, then more room in the planting bed for others' plants and also able to keep your memory and enjoy the tea from it.



LOVE

-Rosa rugosa-

Generally, A red rose is an unmistakable expression of love. Florescence is in Summer May-June.



HAPPYNESS

-Tussilago Farfara-

It's visited by honeybees, providing pollen and nectar. Florescence is in Spring February-May.



SORROW

-Calamintha officinalis-

The Bosnian name for this plant comes from a Turkish word for sorrow and is traditionally used for treating the disease behind which lies depression. Florescence is in Summer July-September.

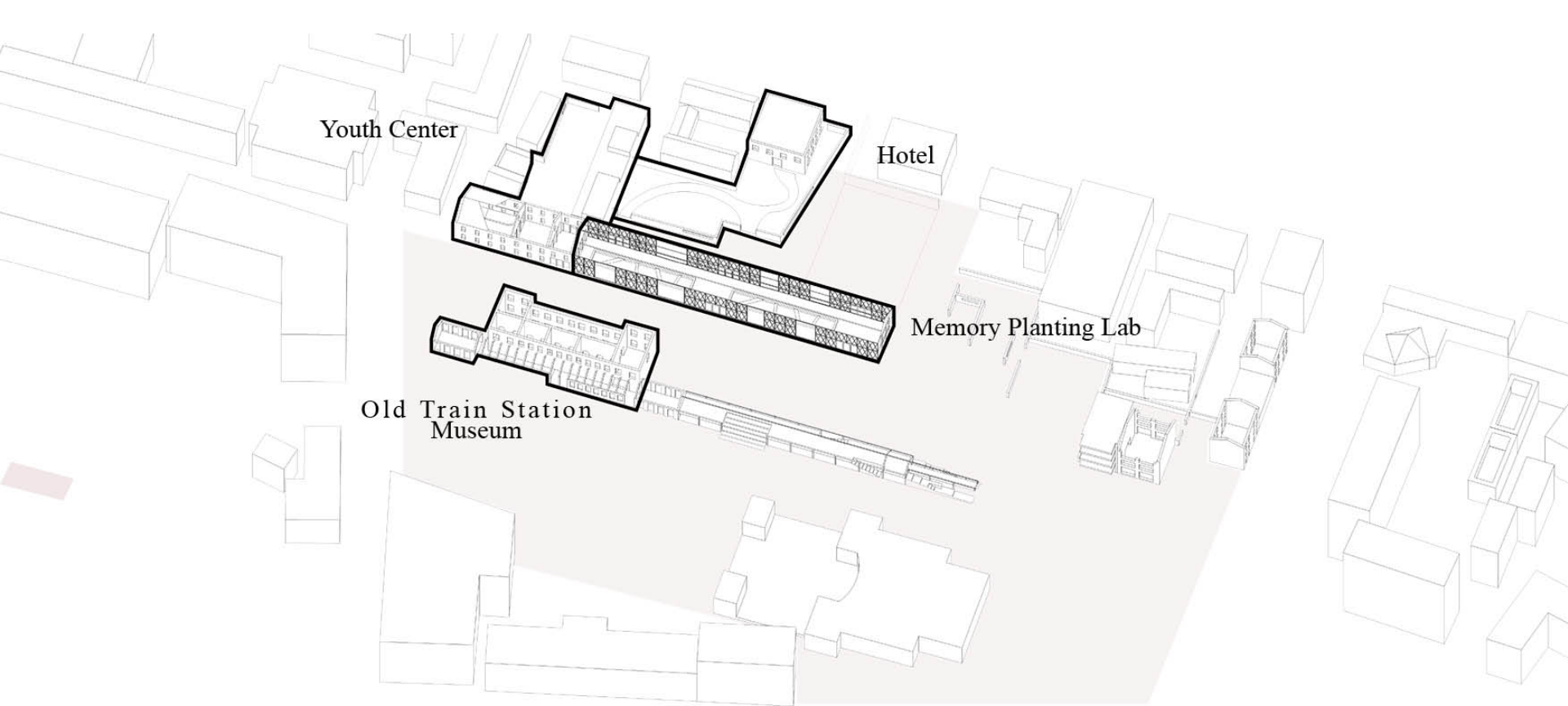


FEAR

-Glechoma hederacea-

This plant was used in the ritual of fear elimination or another type of shock which appeared after a traumatic experience . Florescence is in Spring April-June.





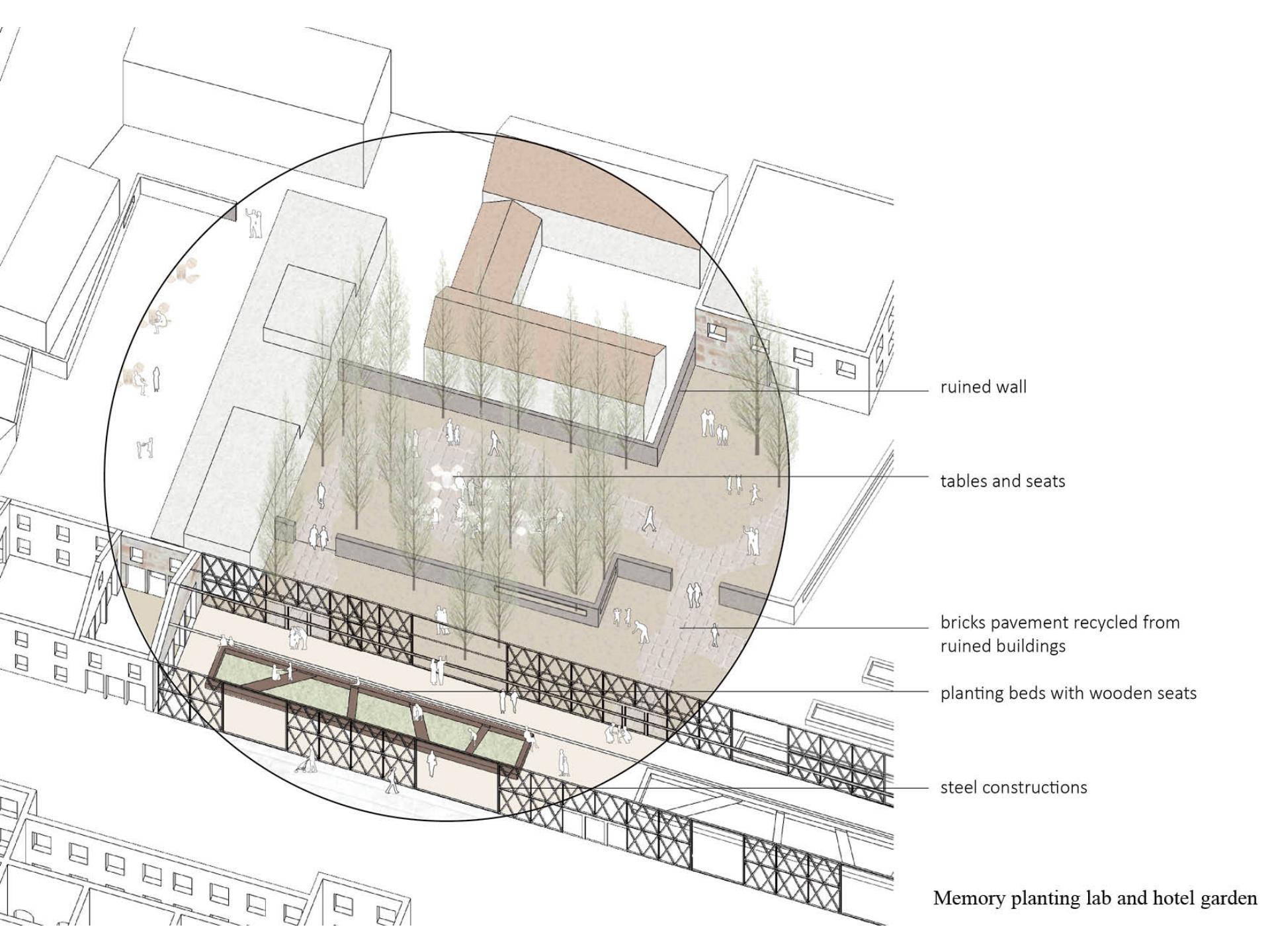
Youth Center

Hotel

Memory Planting Lab

Old Train Station
Museum

Profitable institutions and stakeholders



ruined wall

tables and seats

bricks pavement recycled from
ruined buildings

planting beds with wooden seats

steel constructions

Memory planting lab and hotel garden



THANK YOU!