

Predicting the salt water intrusion in the Shatt al-Arab estuary using an analytical approach

Abdullah, Ali; Gisen, Jacqueline; van der Zaag, Pieter; Savenije, Huub; Karim, UFA; Masih, I; Popescu, I

DOI

[10.5194/hess-20-4031-2016](https://doi.org/10.5194/hess-20-4031-2016)

Publication date

2016

Document Version

Final published version

Published in

Hydrology and Earth System Sciences

Citation (APA)

Abdullah, A., Gisen, J., van der Zaag, P., Savenije, H., Karim, UFA., Masih, I., & Popescu, I. (2016). Predicting the salt water intrusion in the Shatt al-Arab estuary using an analytical approach. *Hydrology and Earth System Sciences*, 20(10), 4031-4042. <https://doi.org/10.5194/hess-20-4031-2016>

Important note

To cite this publication, please use the final published version (if applicable). Please check the document version above.

Copyright

Other than for strictly personal use, it is not permitted to download, forward or distribute the text or part of it, without the consent of the author(s) and/or copyright holder(s), unless the work is under an open content license such as Creative Commons.

Takedown policy

Please contact us and provide details if you believe this document breaches copyrights. We will remove access to the work immediately and investigate your claim.



Predicting the salt water intrusion in the Shatt al-Arab estuary using an analytical approach

Ali D. Abdullah^{1,2,3}, Jacqueline I. A. Gisen^{4,5}, Pieter van der Zaag^{1,2}, Hubert H. G. Savenije², Usama F. A. Karim⁶, Ilyas Masih¹, and Ioana Popescu^{1,7}

¹Department of Integrated Water System and Governance, UNESCO-IHE Institute for Water Education, Westvest 7, 2611 AX, Delft, the Netherlands

²Water Resources Section, Delft University of Technology, Delft, the Netherlands

³Department of Civil Engineering, Basra University, Basra, Iraq

⁴Centre for Earth Resources Research and Management, University Malaysia Pahang, Lebuhraya Tun Razak, Gambang, 26300 Kuantan, Pahang, Malaysia

⁵Faculty of Civil Engineering and Earth Resources, University Malaysia Pahang, Lebuhraya Tun Razak, Gambang, 26300 Kuantan, Pahang, Malaysia

⁶Department of Civil Engineering, University of Twente, P.O. Box 217, 7500 AE, Enschede, the Netherlands

⁷Faculty of Civil Engineering, Politehnica University of Timisoara, Romania

Correspondence to: Ali D. Abdullah (a.abdullah@unesco-ihe.org, alidinar77@gmail.com)

Received: 22 March 2016 – Published in Hydrol. Earth Syst. Sci. Discuss.: 28 April 2016

Revised: 21 September 2016 – Accepted: 22 September 2016 – Published: 6 October 2016

Abstract. Longitudinal and vertical salinity measurements are used in this study to predict the extent of inland seawater intrusion in a deltaic river estuary. A predictive model is constructed to apply to the specific tidal, seasonal, and discharge variability and geometric characteristics of the Shatt al-Arab River (SAR) situated along the border of Iraq and Iran. Reliable hydrologic simulation of salinity dynamics and seawater intrusion was lacking prior to this study. Tidal excursion is simulated analytically using a 1-D analytical salt intrusion model with recently updated equations for tidal mixing. The model was applied under different river conditions to analyse the seasonal variability of salinity distribution during wet and dry periods near spring and neap tides between March 2014 and January 2015. A good fit is possible with this model between computed and observed salinity distribution. Estimating water abstractions along the estuary improves the performance of the equations, especially at low flows and with a well-calibrated dispersion–excursion relationship of the updated equations. Salt intrusion lengths given the current data varied from 38 to 65 km during the year of observation. With extremely low river discharge, which is highly likely there, we predict a much further distance of 92 km. These new predictions demonstrate that the SAR, already plagued with ex-

treme salinity, may face deteriorating water quality levels in the near future, requiring prompt interventions.

1 Introduction

Discharge of fresh river water into the ocean is closely related to vertical and longitudinal salinity variations along an estuary (e.g. Savenije et al., 2013; Whitney, 2010; Becker et al., 2010; Wong, 1995; MacKay and Schumann, 1990). River discharge also has a noticeable effect on the tidal range, primarily through the friction term (the amount of energy per unit width lost by friction) (Savenije, 2005). A decrease in river discharge into an estuary could increase the tidal range and the wave celerity, and consequent increase in salinity levels (Cai et al., 2012). Upstream developments of large dams and water storage facilities change the nature of river flow and subsequently alter river hydrology and quality (Vörösmarty and Sahagian, 2000; Helland-Hansen et al., 1995). The Shatt al-Arab River (SAR) which discharges through its estuary at the border between Iran and Iraq into the gulf is facing serious reductions in freshwater inflows upstream and from its tributaries, as well as significant salt intrusion downstream

(Abdullah et al., 2015). The alteration of river discharge also affects the estuarine ecosystem in terms of sediments, nutrients, dissolved oxygen, and bottom topography (Sklar and Browder, 1998). All these problems are strongly featured in the SAR.

The increases in salinity along the SAR, particularly caused by salt intrusion, have become a threat to the people and environment alike. Generally, salt water intrusion makes the river water unfit for human consumption and unacceptable for irrigation practices (Abdullah et al., 2016; Al-Tawash et al., 2013). Saline water in the SAR estuary comes from both natural (seawater intrusion) and anthropogenic sources. Thus, the pattern of the salinity variation is complex because of the dynamic spatial and temporal interaction between salinity sources. Available studies on the SAR identify the escalating pressure of salinity increment and its consequences for water users as well as the ecosystem (e.g. Abdullah et al., 2016; Al-Tawash et al., 2013; Fawzi and Mahdi, 2014), but detailed information on the extent of salt water intrusion under different conditions is lacking. Hence, there is a need to investigate the impact of seawater intrusion among other sources on the river salinity, and to analyse the dynamics of the saline water–freshwater interface for effective water management.

Different approaches have been used to study the relationship between saline water and freshwater in estuaries. Alber (2002) proposed a conceptual model for managing freshwater discharge into estuaries. Wang et al. (2011) used an empirical approach, conducting three hydrological surveys along six locations around the Yellow River mouth to investigate the effect of abrupt changes in the river discharge on the salinity variations. Using a numerical model, Bobba (2002) analysed the mechanism of salt water and freshwater flow in the Godavari Delta and found that freshwater withdrawals contribute to the advance in seawater intrusion. Liu et al. (2004) applied a 2-D model to estimate the salinity changes in the Tanshui River, showing that the significant salinity increase is a result of reservoir construction and bathymetric changes. A 3-D model was used by Vaz et al. (2009) to study the patterns of saline water in the Espinheiro tidal channel. The result indicates that the model underestimated the salinity distributions for high river inflow. Das et al. (2012) used a hydrology–hydrodynamics model to examine salinity variations under different water diversion scenarios in the Barataria estuary, and discovered that the diversions have a strong impact on salinity in the middle section of the estuary and a minor impact in the upper section.

Analytical approaches describing salinity distribution in estuaries have been used by Ippen and Harlemen (1961), Prandle (1985), and Savenije (1986). An analytical solution is able to provide important knowledge about the relationship between the tide, river flow, and geometry of the tidal channel. The 1-D modelling is usually based on a number of assumptions to simplify the set of equations. Several available models generally assumed a constant tidal channel cross

section to linearize and simplify the calculation processes. In this study the 1-D analytical salt intrusion model proposed by Savenije (1986, 1989, 1993) is considered, which uses the more natural exponential geometry and requires a minimal amount of data. The model has been successfully applied to several single-channel estuaries worldwide (e.g. Rissley et al., 1993; Horrevoets et al., 2004; Gisen et al., 2015a). Moreover, it can also describe the tidal propagation in multi-channel estuaries (Zhang et al., 2012) as well as estuaries with a slightly sloping bottom (Nguyen and Savenije, 2006; Cai et al., 2015).

The aim of this study is to determine the real extent of salt intrusion into the SAR estuary. This is done by applying the 1-D analytical salt intrusion model combined with the revised predictive equations for tidal mixing of Gisen et al. (2015b). Then the predictive model was used to examine the consequences of changes in river flow for the salinity distribution.

2 Research area

The SAR is located in southern Iraq and its estuary is connected to the gulf (Fig. 1). The total length of the river is 195 km, of which the last 95 km serve as a boundary between Iraq and Iran. The estuary receives freshwater from four main tributaries. The Tigris and Euphrates rivers originate in Turkey and form the SAR at their confluence near the city of Qurna, Iraq. The other two tributaries, Karkheh and Karun, originate in Iran. The Karkheh is connected with the SAR through a system of marshes, while the Karun discharges into the SAR at approximately 87 km from the mouth.

The estuary experiences a tidal cycle of approximately 12 h 25 min with notable flood and ebb tides (Fig. 2). The estuary has a mixed-diurnal and semi-diurnal tide with successive spring and neap tide. The tidal range (the difference between the water levels at high water (HW) and low water (LW)) varies from 1 m (neap) to 3 m (spring). Salinity levels fluctuate at an hourly scale depending on the tide cycles and freshwater discharge. Salinity increases during flood tides and decreases during ebb. The impact of freshwater inflows can be clearly recognized during neap tide and ebb periods. The salinity level also varies along the year; for example, the highest value measured in the year 2014 was 40 kg m^{-3} during summer and the lowest value was 0.7 kg m^{-3} .

The SAR is the main surface water source for daily consumption and agricultural uses in the region and serves around 3 million people, the majority living in Basra. Rural communities live along the river and around the marshes and derive their livelihoods mainly from agriculture and livestock. The main agricultural lands extend along the river banks with large date palm plantations. A variety of human activities along the SAR and its tributaries deteriorates the water quality and has significantly increased the salinity concentration over time. In addition, the decreases in

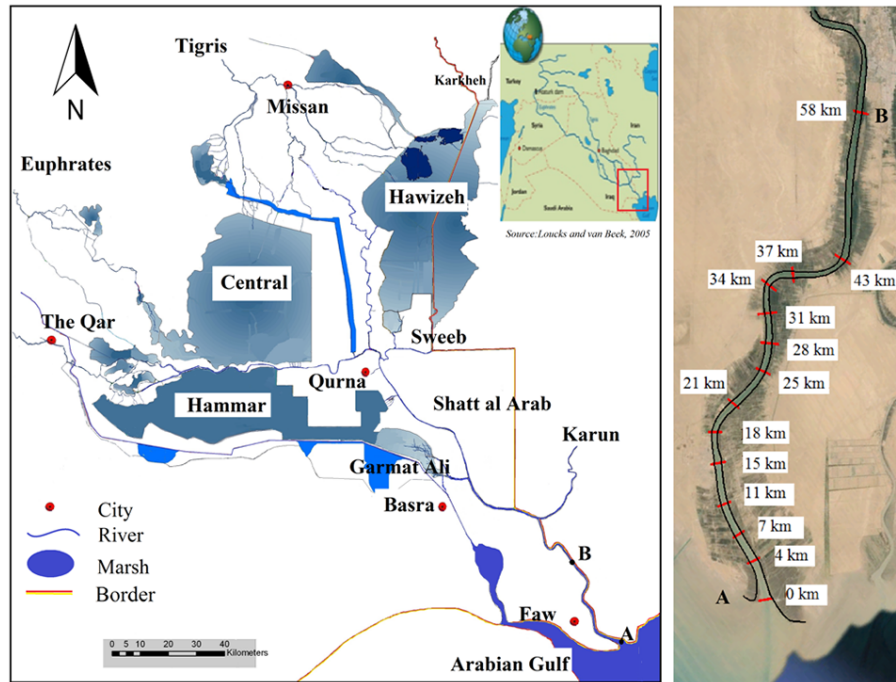


Figure 1. The salient features of the Shatt al-Arab region (left) and the aerial view of the estuary from Google Earth with the measurement locations (not to scale) (right).

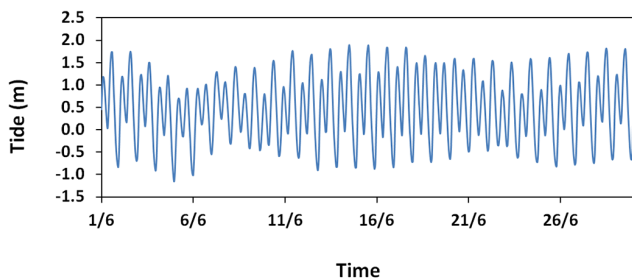


Figure 2. Tidal elevation at Faw station in June 2014.

freshwater inflows into the estuary due to upstream water withdrawals have allowed the seawater to intrude further upstream. Currently the Tigris is the main source of freshwater for the SAR; its discharge ranges between 30 and $100 \text{ m}^3 \text{ s}^{-1}$. The total discharge from other tributaries, except the Karun, ranges between 0 and $10 \text{ m}^3 \text{ s}^{-1}$. The available information on discharge of the Karun is limited and inconclusive. Most relevant is Ahvaz station in Iran (UN-ESCWA and BGR, 2013; Salarijazi et al., 2012; Afkhami et al., 2007), the most downstream gauging station but still located approximately 200 km upstream of the confluence with the SAR. Due to large-scale water developments, the mean annual discharge of the Karun has experienced a consistent negative trend from 818 to $615 \text{ m}^3 \text{ s}^{-1}$ before and after 1963 respectively (UN-ESCWA and BGR, 2013). Whereas Salarijazi et al. (2012) reported a mean annual river dis-

charge at Ahvaz of $1442 \text{ m}^3 \text{ s}^{-1}$ for the period 1954–2005, the mean monthly river discharge for the period between 1978 and 2009 was only $667 \text{ m}^3 \text{ s}^{-1}$ (Meysam Salarijazi, personal communication, 2015). However, the Karun River discharge into the SAR is believed to have decreased even more in recent years due to continued increases in water abstractions upstream. The combination of tide and fluctuating river discharge makes it difficult to recognize the real extent of salt intrusion and its impact on the horizontal salinity pattern along the river under different conditions.

Adding to the complexity of studying salt intrusion in the Shatt al-Arab is that it is the border river between Iraq and Iran, with strict security conditions. This does not make it easy to organize hydrometric surveys by speedboat and carry out salinity observations during an entire tidal cycle. As a result, the field data collected during this study and the results obtained by the analytical model form a unique data set for the region.

3 Theory of the analytical model

During a tidal cycle, the tidal velocity is near zero just before the tidal current changes direction. This situation is known as high water slack (HWS) just before the direction changes seaward, and low water slack (LWS) just before the direction changes landward. The model originally proposed by Savenije (1989), calibrated with measurements made at HWS, describes the salinity distribution in convergent estu-

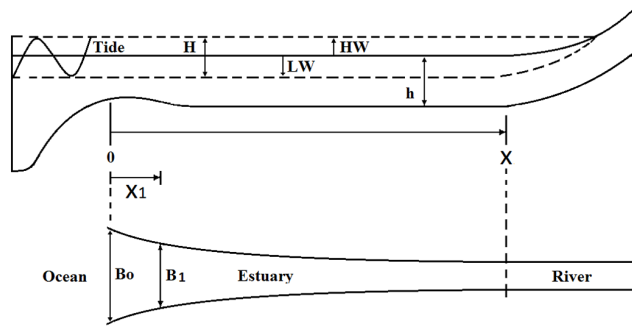


Figure 3. Sketch of the estuary, the longitudinal profile, and the top view.

aries as a function of the tide, river flow, and geometry, using Van der Burgh's coefficient (K) and the dispersion coefficient (D_0) at the mouth. A conceptual sketch of the 1-D model of salt intrusion is shown in Fig. 3.

The geometry of an estuary can be presented by exponential functions describing the convergence of the cross-sectional area and width along the estuary as

$$A = A_0 \exp^{-\frac{x}{a_1}} \text{ for } 0 < x \leq x_1, \quad (1)$$

$$A = A_1 \exp^{-\frac{(x-x_1)}{a_2}} \text{ for } x > x_1, \quad (2)$$

$$B = B_0 \exp^{-\frac{x}{b_1}} \text{ for } 0 < x \leq x_1, \quad (3)$$

$$B = B_1 \exp^{-\frac{(x-x_1)}{b_2}} \text{ for } x > x_1, \quad (4)$$

where A_0 and B_0 are the cross-sectional area (L^2) and width (L) at the estuary mouth ($x = 0$), A_1 and B_1 are the cross-sectional area and width at the inflection point ($x = x_1$), and $a_{1,2}$ and $b_{1,2}$ are the cross-sectional and width convergence lengths (L) at $x \leq x_1$ and $x > x_1$ respectively.

Combining Eq. (1) with Eq. (2), and Eq. (3) with Eq. (4), describes the longitudinal variation of the depth:

$$h = h_0 \exp^{-\frac{x(a_1-b_1)}{a_1 b_1}} \text{ for } 0 < x \leq x_1, \quad (5)$$

$$h = h_1 \exp^{-\frac{(x-x_1)(a_2-b_2)}{a_2 b_2}} \text{ for } x > x_1, \quad (6)$$

where h , h_0 , and h_1 are the cross-sectional average water depths (L) at distance x from the mouth, at the estuary mouth, and at the inflection point respectively.

Integrating the geometry equations into the salt balance equation of Van der Burgh (1972) yields a steady-state longitudinal salinity distribution along the estuary (see Savenije, 2005) under HWS condition:

$$S - S_f = S_0 - S_f \left(\frac{D}{D_0} \right)^{\frac{1}{K}} \text{ for } 0 < x \leq x_1, \quad (7)$$

$$S - S_f = S_1 - S_f \left(\frac{D}{D_1} \right)^{\frac{1}{K}} \text{ for } x > x_1, \quad (8)$$

where D_0 , D , and D_1 ($L^2 T^{-1}$) are the dispersion coefficient at the estuary mouth, at any distance x , and at the inflection

point, S_0 , S_1 and S (ML^{-3}) are the salinity at the estuary mouth, inflection point, and distance x respectively, S_f is the freshwater salinity, and K is the Van der Burgh coefficient which according to Savenije (2005) has a value between 0 and 1, where

$$\frac{D}{D_0} = 1 - \beta_0 \left(\exp \left(\frac{x}{a_1} \right) - 1 \right) \text{ for } 0 < x \leq x_1, \quad (9)$$

and

$$\frac{D}{D_1} = 1 - \beta_1 \left(\exp \left(\frac{x-x_1}{a_2} \right) - 1 \right) \text{ for } x > x_1, \quad (10)$$

with

$$\beta_0 = \frac{K a_1 Q_f}{D_0 A_0} \text{ for } 0 < x \leq x_1, \quad (11)$$

$$\beta_1 = \frac{K a_2 Q_f}{D_1 A_1} \text{ for } x > x_1. \quad (12)$$

β_0 and β_1 are the dispersion reduction rate ($-$) at the estuary mouth and at the inflection point respectively, and Q_f is the freshwater discharge.

The salt intrusion model is used to estimate the salt intrusion length, which can be determined using low water slack (LWS, the lower extreme salt intrusion), high water slack (HWS, the upper salt intrusion), or tidal average (TA, the average of the full tidal cycle). Savenije (2012) proposed to calibrate the model on measurements carried out at HWS. This is to obtain the maximum salt intrusion over the tidal cycle. The salinity distribution can be computed at LWS and TA based on the relation between salinity distributions during the three conditions. The salt distribution curve at HWS could be shifted downstream over a horizontal distance equal to the tidal excursion length (E) and half of the tidal excursion length ($E/2$) to obtain the salt distribution curve at LWS and TA conditions respectively. The model variables can be determined from field observations and shape analysis, while the two parameters K and D_0 remain unknown, in addition to Q_f , which is difficult to determine in the tidal region. To facilitate the calibration process, D_0 and Q_f are combined in one variable, the mixing coefficient α_0 (L^{-1}):

$$\alpha_0 = \frac{D_0}{Q_f} \quad (13)$$

After model calibration, the values for K and α_0 are known and the salinity at any point along the estuary can be calculated. Finally the salt intrusion length (L) during HWS is obtained by

$$L^{HWS} = x_1 + a_2 \ln \left(\frac{1}{\beta_1} + 1 \right). \quad (14)$$

The calibration parameters can be obtained based on field measurements, but to turn the model into a predictive model, a separate equation for D_0 is required. A predictive equation for D_0 was presented by Savenije (1993) and then improved

by Gisen et al. (2015b), who moved the boundary condition to a more identifiable inflection point x_1 , based on observations made for a large number of estuaries worldwide as

$$D_1 = 0.1167 E_1 v_1 N_R^{0.57} \quad (15)$$

with

$$N_R = \frac{\Delta\rho gh Q_f T}{\rho A E v^2} \quad (16)$$

and

$$E = \frac{vT}{\pi}. \quad (17)$$

N_R is the estuarine Richardson number (–), the ratio of potential energy of the buoyant freshwater to the kinetic energy of the tide, ρ and $\Delta\rho$ (ML^{-3}) are the water density and the density difference over the intrusion length, g is the gravitational acceleration (L T^{-2}), T is the tidal period (T), v is the velocity amplitude (L T^{-1}), and E is the tidal excursion (L).

This study tests the predictive performance of the 1-D analytical salt intrusion model, combined with new revised predictive equations to analyse the real extent of seawater intrusion in the SAR estuary under different river discharge conditions.

4 Data collection

The 1-D analytical salt intrusion model is based on a number of parameters that can be obtained through field surveys. Variables such as K and D_0 are not directly measurable, and therefore they are obtained by calibrating the simulated salinity curve to the data sets from the salt intrusion measurements. For this study four measurement campaigns were conducted, mainly measuring salt concentrations and water levels. The measurements took place during the wet and dry periods at spring and neap tides. These were on 26 March (neap-wet), 16 May (spring-dry), 24 September 2014 (spring-dry), and 5 January 2015 (spring-wet).

Salinity measurements were conducted at the moment just before the flow changes direction (HWS and LWS). The HWS and LWS represent the envelope of the vertical salinity variation during tidal cycles, and are also used to determine the longitudinal tidal excursion. A moving boat technique was used in the field survey in which the boat moved with the speed of the tidal wave to capture the slack moment. Starting from the mouth of the estuary and in the middle of the course, the salinity variations during the tidal cycle were observed. A conductivity meter, YSI EC300A (<https://www.ysi.com>) with a cable length of 10 m, was used to measure the vertical salinity profile for each meter depth from the bottom to the surface, and it was done repetitively at an interval of 3–4 km (longitudinally) until the river salinity was reached (in this case 1.5 kg m^{-3}).

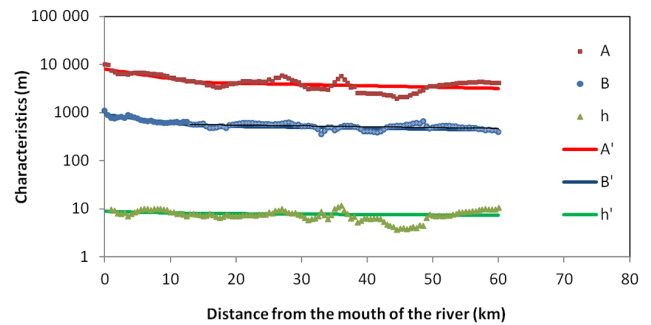


Figure 4. SAR geometric characteristics (A , B , h : measured; A' , B' , h' : Eqs. 1–6).

The required information on river discharge and cross-sectional profiles was provided by the local water authority. It is difficult to measure the discharge accurately in an estuary considering the tidal fluctuation. Hence, the discharge data from the nearest (most downstream) station were used in the analysis. The daily streamflow data of all the tributaries within the country were obtained from the Department of Water Resources in Iraq. However, there were no data on the discharge of one tributary, the Karun River, located in neighbouring Iran. Experts of the water resources authority in Basra indicated that the average discharge of the Karun River was estimated at $40 \text{ m}^3 \text{ s}^{-1}$. River cross-sectional data were collected based on the last survey carried out in 2012 by the GSDS (General Directorate of Study and Design).

5 Salinity modelling

5.1 Geometric characteristics

Results of the cross-sectional area, width, and depth are presented in a semi-logarithmic scale plot in Fig. 4. This figure shows a good agreement between the computed cross-sectional areas A , width B , and depth h based on Eqs. (1)–(6) and the observed data, except for the part between 40 and 50 km, which is shallower in comparison to the rest of the estuary. The cross-sectional area A and width B are divided into two reaches with the convergence lengths a_1 and a_2 of 22 and 26 km respectively (see Table 1). The geometry changes in a decreasing pattern landwards following an exponential function. In an alluvial estuary, the wide mouth and shorter convergence length in the seaward part is generally wave-dominated, while the landward part with longer convergence length is tide-dominated. The average depth h is almost constant, with a very slight decrease along the estuary axis (a depth convergence length of 525 km).

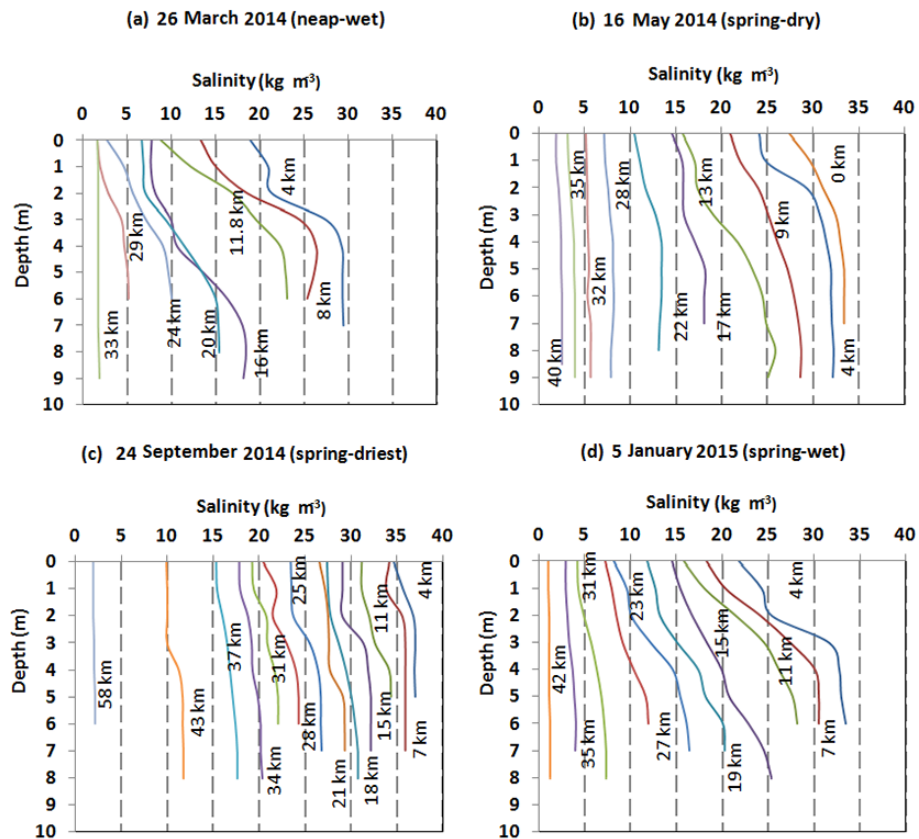
5.2 Vertical salinity profile

In Fig. 5 the results of the observed vertical salinity profile at HWS are presented. It can be seen that the salt intrusion

Table 1. The geometry characteristic of the SAR estuary.

A_0 (m ²)	A_1 (m ²)	B_0 (m)	B_1 (m)	a_1 (m)	a_2 (m)	b_1 (m)	b_2 (m)	\bar{h} (m)
8050	4260	910	531	22 000	160 000	26 000	230 000	7.9

A_0 and A_1 are cross-sectional areas at the mouth and inflection point respectively. B_0 and B_1 are channel widths at the mouth and inflection point respectively, and a_1 , a_2 , and b_1 , b_2 are locations of the convergence length of the cross-sectional area and width respectively. \bar{h} is the average depth over the estuary length (of 60 km).

**Figure 5.** Vertical salinity distribution of the estuary measured between 0 and 58 km at HWS.

mechanism is well mixed for the entire observation period. During the wet period when river discharge is relatively high, a partially mixed condition can be observed particularly in the downstream area (Fig. 5a and d). In the neap-wet condition as shown in Fig. 5a, there is more stratification and the partially mixed pattern occurs in almost the entire stretch of the estuary. This is because at neap tide, the tidal flows are small compared to the high freshwater discharge during the wet season. Conversely, during the spring-dry period when the river discharge is significantly low and the tidal range is large (Fig. 5b and c), the vertical salinity distribution along the estuary is well mixed.

5.3 Longitudinal salinity profile

The measurements of salinity during HWS and LWS are presented in Fig. 6. Calculations of the longitudinal salinity pro-

files are based on Eqs. (7)–(14), where the dispersion D decreases over x until it reaches zero at the end of the salt intrusion length. Coefficients K , D_0 , and E were calibrated to obtain the best fit between measured salinity data and simulated salinity variations. The longitudinal salinity distributions during a tidal cycle are demonstrated by three curves: (1) the maximum salinity curve at HWS; (2) the minimum salinity curve at LWS; and (3) the average of HWS and LWS representing the average salinity curve at TA. Tidal excursion (E) is determined from the horizontal distance between the salinity curves of HWS and LWS. This distance is considered constant along the estuary axis during the tidal cycle. In this study, the tidal excursion is found to be 14 km on 24 September and 10 km for the other observations (Table 2).

The results show good agreement between measured and simulated salinity profiles, with few deviations between the

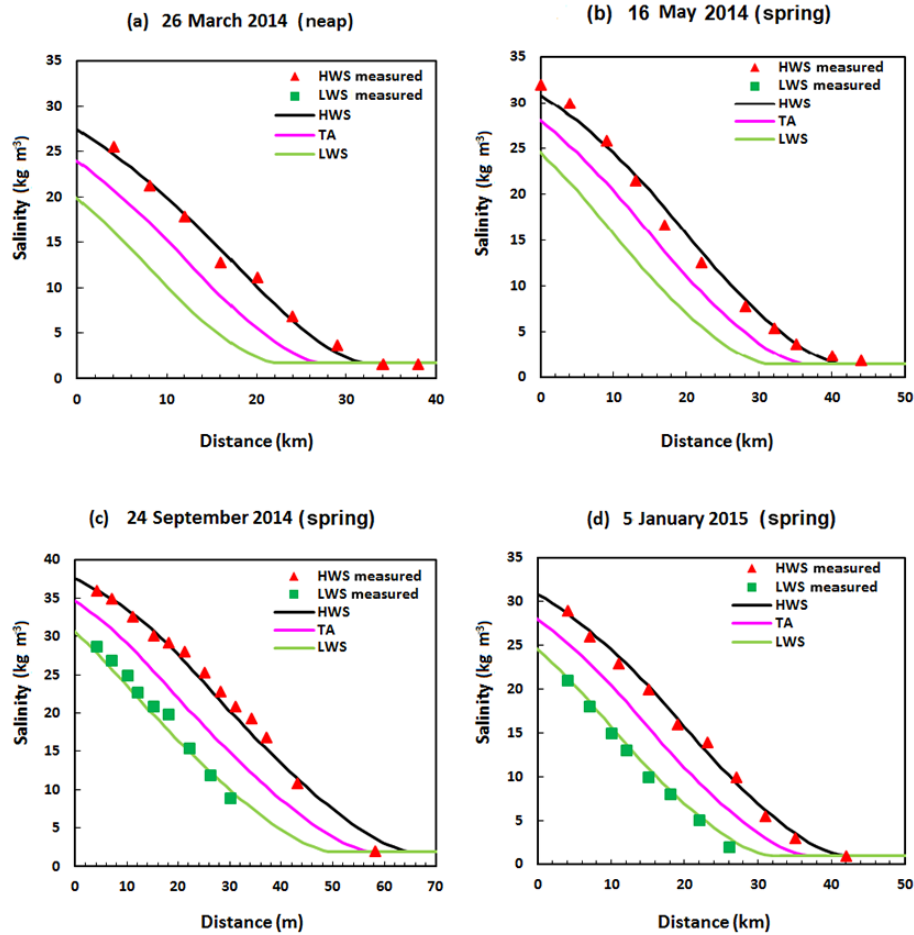


Figure 6. Predicted and measured salinity distribution during HWS, TA, and LWS.

Table 2. Characteristic values of the estuary, including the maximum salinity at the mouth S_o , the river discharge Q_f , tidal excursion E , Van der Burgh coefficient K , the dispersion coefficient D_o , mixing number α_o , and salt intrusion length L .

Period	S_o (kg m ⁻³)	Q_f (m ³ s ⁻¹)	E (km)	K	D_o (m ² s ⁻¹)	α_o (m ⁻¹)	L (km)
26 March 2014	24	109	10	0.65	403	3.7	32
16 May 2014	28	91	10	0.65	473	5.2	42
24 September 2014	34.6	48	15.5	0.65	442	9.2	65
5 January 2015	28	53	10	0.65	281	5.3	42

observed and modelled salinities. The small deviations may be due to the timing errors in which the boat movement speed did not coincide exactly with the tidal wave. In Fig. 6 (a and d), it can be seen that the measured salinity at distances 20 and 24 km during HWS are higher than the simulated values. There is a sub-district (with considerable agricultural communities) and a commercial harbour, and it is believed that all of their effluents and drainage water are discharged into the river. This could be the reason for the salinity being a little higher than expected. In Fig. 6c, the last measurement point is lower than the simulated one. This may be due to

the relatively shallow stretch between 40 and 50 km, which can substantially reduce the salt intrusion. Also, a timing error may be an explanation for this deviation: the boat did not move fast enough as it was delayed for short stops at police checkpoints.

All the field surveys indicate that the maximum salinity at the mouth ranged from 24 to 35 kg m⁻³ (Table 2). The lowest maximum salinity is during the neap-wet period and the highest is during the spring-dry period. It can be seen that the seawater intrudes furthest in September (spring-driest period) and shortest in March (neap-wet). These findings are

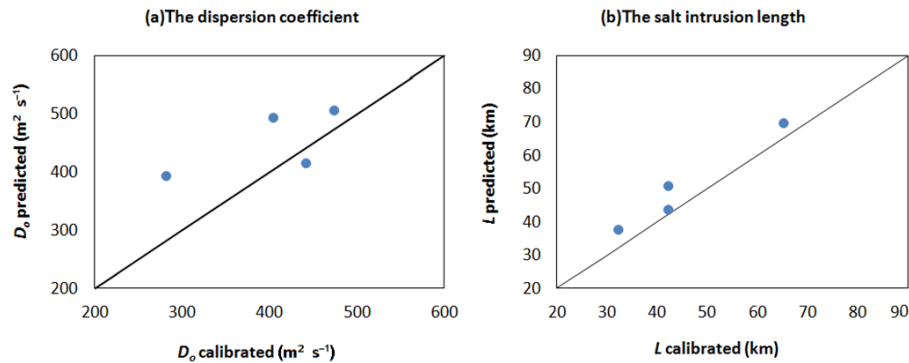


Figure 7. Comparison between the predicted and calibrated values of D_0 and L .

logical because during the wet season, the estuary is in a discharge-dominated condition and the lower tide (neap) can be easily pushed back by the river discharge. On the other hand, during the dry season the estuary is tide-dominated and the higher tide (spring) managed to travel further inland without much obstruction (low freshwater discharge). The tidal ranges recorded during field surveys are 1.7, 3.2, 2.1, and 2.6 respectively as the same date shown in Fig. 6a–d.

Besides seawater intrusion, human activities in the upstream part of the estuary also contribute to the salinity levels along the river. From observations, the river salinity in the inland part varies in space and time between 1 and 2 kg m^{-3} . Thus, the salt concentrations are the result of a combination of anthropogenic and marine sources (Abdullah et al., 2016). The findings from the longitudinal salinity distribution indicate that there is a need to analyse and classify the effects of natural and anthropogenic factors on estuary salinity.

5.4 The predictive model

The dispersion coefficient D is not a physical parameter that can be measured directly. It represents the mixing of saline water and freshwater, and can be defined as the spreading of a solute along an estuary induced by density gradient and tidal movement. Knowing the river discharge is crucial for determining a dispersion coefficient D from Eq. (9). However, it is difficult to measure the river discharge accurately in the tidal region due to the tidal fluctuation. In this study, the river discharge data on the days of the measurements were used from the gauging station located at the most downstream part of the river network.

For the situation where measured salinity is known, the dispersion coefficient D_0 and the salt intrusion length L at HWS were calibrated by fitting the simulated salinity curve (Eqs. 7–14) against the field data. In case no field data are available, the dispersion coefficient D_1 was estimated using Eq. (15). The predicted D_1 then was used to determine the predicted D_0 (using Eq. 9) and L (using Eq. 14). Comparisons between the calibrated and predicted values were done to evaluate the performance of the model. The prediction per-

Table 3. Measured and adjusted river discharge considering water consumptions on the days of measurements.

Date	Measured river discharge ¹ ($\text{m}^3 \text{ s}^{-1}$)	Adjusted river discharge ² ($\text{m}^3 \text{ s}^{-1}$)
26 March 2014	109	114
16 May 2014	91	96
24 September 2014	48	58
5 January 2015	53	63

¹ not counting water abstractions and excluding the Karun inflows;

² deducting water abstractions and including the Karun inflows.

formance was evaluated with two model accuracy statistics: the root mean squared error (E_{RMS}) and the Nash–Sutcliffe efficiency (E_{NS}) (Eqs. 18 and 19 respectively).

$$E_{\text{RMS}} = \sqrt{\frac{1}{n} \sum_{i=1}^n (P_i - O_i)^2}, \quad (18)$$

$$E_{\text{NS}} = 1 - \frac{\sum_{i=1}^n (O_i - P_i)^2}{\sum_{i=1}^n (O_i - \bar{O})^2}, \quad (19)$$

where P and O are the predictive and observed variables respectively, and \bar{O} is the observed mean. The index (E_{NS}) ranges from $-\infty$ to 1. It describes the degree of accurate prediction. An efficiency of one indicates complete agreement between predicted and observed variables, whereas an efficiency of less than zero indicates that the prediction variance is larger than the data variance.

Figure 7 presents poor correlations between the calibrated and predicted values of D ; the situation is better in the case of L values. Table 4 displays the correlation between predicted and measured values. The E_{NS} obtained for D is -0.09 and reflects weak predictive performance. Generally the model appears to overestimate the values of the dispersion coefficient compared to the calibrated ones during the wet period and to underestimate the value during the drought period in September. This could be due to the use of the measured discharge at the end of the tidal domain, which gives higher or

Table 4. The predicted and calibrated values of D_0 and L considering measured and adjusted river discharge.

Measured river discharge				Adjusted river discharge			
Calibrated values		Predicted values		Calibrated values		Predicted values	
D_0 ($m^2 s^{-1}$)	L (km)	D_0 ($m^2 s^{-1}$)	L (km)	D_0 ($m^2 s^{-1}$)	L (km)	D_0 ($m^2 s^{-1}$)	L (km)
403	32	495	38	422	32	509	37
473	42	507	44	499	42	528	43
441	65	416	70	533	65	529	65
281	42	395	51	335	42	400	48

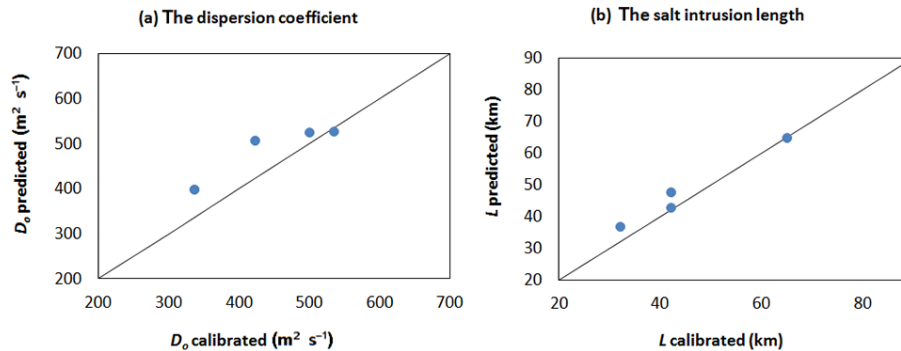


Figure 8. Comparison between the predicted and calibrated values of D_0 and L using the improved discharge data.

lower values than the exact freshwater discharging into the estuary, as it does not account for the discharge of the Karun River at the downstream end and the water consumption and water losses within the system (see Table 3). The SAR is the main freshwater source for irrigation, domestic, and industrial activities in the region. Hence, water consumption could highly affect the performance of a predictive model, especially in the region where water withdrawals can considerably reduce river discharge into the estuary.

In order to reduce the uncertainty in the discharge data, some alternative approach has to be adopted. Gisen et al. (2015a) estimated the discharges for the downstream areas by extrapolating the correlation of the gauged area with the ungauged areas. Cai et al. (2014) developed an analytical approach to predict the river discharge into an estuary based on tidal water level observations. This method is only applicable in estuaries with a considerable river discharge compared to the tidal flows. In this study, a simple approach has been used to assess the discharge in the SAR estuary by deducting the water withdrawals in the downstream region from the discharge data collected at the lowest gauging points. In a similar way the average discharge of the Karun was also estimated (Table 3). Data on water withdrawals were collected from the water resources authority and water distribution departments. Besides irrigation and domestic supply, the industrial sector, including the oil industry, is also a significant water user. Unfortunately this study could not obtain information on water usage and disposal by the oil industry.

Table 5. Results of the model performance in terms of root mean squared error (E_{RMS}) and Nash–Sutcliffe efficiency (E_{NS}).

	NSE	RMSE
Measured river discharge		
D_0	-0.09	$76 m^2 s^{-1}$
L	0.75	6 km
Adjusted river discharge		
D_0	0.46	$60 m^2 s^{-1}$
L	0.9	4 km

The adjusted river discharge data are then applied in the predictive model to evaluate the improvement of these changes in predicting values of D and L (Table 4). The results obtained after the adjustment are shown in Fig. 8. The figures demonstrate the improvements in predicting the dispersion and maximum salt intrusion length and show the importance of computing the freshwater discharge accurately. Furthermore the correlations between predictive and observed values are improved for both D_0 and L , 0.46 and 0.9 respectively, and the E_{RMS} also reduced to $60 m^2 s^{-1}$ and 4 km for D_0 and L respectively (Table 5).

The prediction performance of the model is demonstrated in Fig. 9, where the salinity curves were computed from the predictive equation of D_1 and the adjusted river discharges.

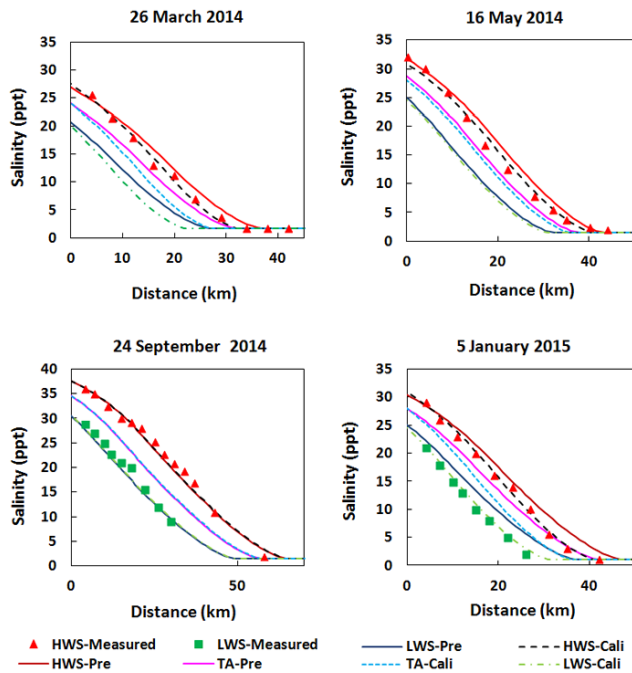


Figure 9. Comparing the salinity curves of the calibrated results (dashed lines) and the predicted results (solid lines) to the observed salinity during the four periods of 2014.

Figure 9 shows that the prediction salinity curves perform very well compared to the calibrated one during all periods, except January 2015. This could be because the average discharge used for the Karun River, in which the value is lower than the actual discharge, being the month of January, is in the middle of the wet season. At such a time the SAR is expected to receive high flow rates from the Karun River. On the other hand, during this season more return flows are drained into the SAR from the large irrigation scheme serviced by the Karun water system, increasing anthropogenic salinity levels. Accurate estimation of river discharge into the estuary is important in improving the predictive skill of the model.

The ultimate objective of the modelling is to assess the influence of upstream development on the estuarine environment, and also to find the real extent of salt intrusion. The salinity distribution along the estuary is highly linked to upstream conditions, such as flow regulation and water withdrawals. For the purpose of improving the SAR estuary management, the model can lead to estimation of a salt intrusion length for a given freshwater discharge. This is useful for water supply managers to determine the appropriate location (salinity-free region) for water intake stations. Figure 10 demonstrates the salt intrusion length (L) associated with different river discharges corresponding to water released from the Tigris River into the SAR. The salt intrusion lengths are plotted against a range of freshwater discharges from 5 to $120 \text{ m}^3 \text{ s}^{-1}$. The main finding is that the length of salt intru-

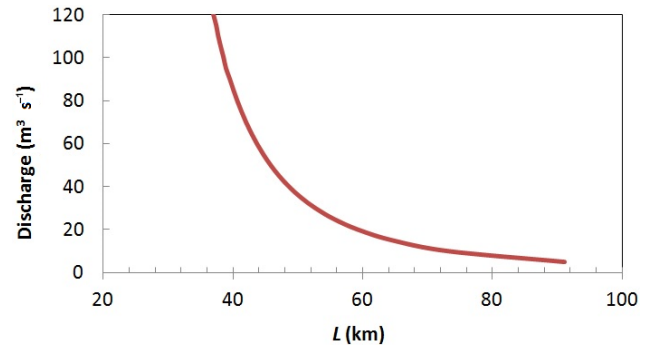


Figure 10. Relationship between river discharge and predicted salt intrusion length.

sion increases in a non-linear way with decreasing river discharge. The salt intrusion length is very sensitive to river discharge when the flow is low. From the plot it can also be seen that the maximum salt intrusion could reach 92 km from the SAR estuary at $5 \text{ m}^3 \text{ s}^{-1}$ river discharge. This outcome exceeds a preliminary estimate by Abdullah et al. (2016) based on a 1-year data series, who found the salinity to reach up to 80 km considering the annual salinity peaks along the river. An 80 km intrusion length corresponds to a measured river discharge of $58 \text{ m}^3 \text{ s}^{-1}$, whereas for the predictive model this distance corresponds to a much lower discharge ($7 \text{ m}^3 \text{ s}^{-1}$). It is, however likely that the true river discharge was lower, since during the lowest discharge the irrigation demand is relatively high. It should also be realized that in the region of 40–50 km the depth and cross-sectional areas are substantially less. Such a shallow reach can reduce the salt intrusion length substantially, as can be seen from Eq. (14), where β_1 is inversely proportional to A .

6 Conclusions

A 1-D analytical salt intrusion model was applied to the SAR estuary based on four survey campaigns in 2014 and 2015. This model is used to determine longitudinal salinity distribution and the length of salt intrusion. The analytical model is shown to describe well the exponential shape of the estuary in the upstream direction. Moreover, the results show good agreement between computed and observed salinity under different river conditions. This indicates that the analytical model is capable of describing the extent of seawater intrusion along the SAR estuary.

Results for the dispersion coefficient D_0 indicate that the measured river discharge out of the tidal range is higher than the real discharge into the estuary. This can be attributed to water withdrawals along the tidal domain. In the case of low river discharge, water withdrawals have a considerable effect on the predicted salt intrusion length. The river discharge into the estuary was revised considering water withdrawals of the irrigation and domestic sectors. Using adjusted river

discharge improved the performance of the predictive equations. For further improvement, it is recommended to obtain more accurate estimation of the river discharge into the estuary.

Seawater intrusion is driven by the discharge kinetics from tidal seawater and the hydrostatic potential energy from freshwater fluctuations. Intrusion lengths of 38, 40, 65, and 43 km correspond to tidal ranges of 1.7, 3.2, 2.1, and 2.6 m during March, May, and September 2014, and January 2015 respectively. The longer salt intrusion distance is caused by low river discharge, as evident for September (dry period).

The SAR is the main source of freshwater for daily consumption and irrigation. Decreased freshwater discharge and increased seawater intrusion will exacerbate an already critical situation in that important agricultural and ecological region. The model shows a scenario in which decreasing river discharge, considered a likely event, can result in an increase in seawater intrusion further upstream to a distance of 92 km. Additional salinity sources from anthropogenic activities will diminish the volume of freshwater, leading to very serious health problems and water and food insecurity. Calibration of the model can be enhanced with further monitoring of discharge and salinity from all the tributaries and used to make new estimates of longitudinal salinity distribution under extreme conditions. Preventing salt intrusion of these magnitudes can only be achieved if the water quantity and quality of the upstream sources as well as along the SAR are promptly and strictly regulated.

7 Data availability

Data used in this paper is available upon request to the correspondence author.

Acknowledgements. The authors highly appreciate the support of Meysam Salarijazi providing required information. We acknowledge the editor M. Vanclooster for the valuable comments. We thank the two anonymous reviewers for their interesting comments and suggestions.

Edited by: M. Vanclooster

Reviewed by: two anonymous referees

References

- Abdullah, D. A., Masih, I., Van der Zaag, P., Karim, U. F. A., Popescu, I., and Al Suhail, Q.: The Shatt al-Arab System under Escalating Pressure: a preliminary exploration of the issues and options for mitigation, *Int. J. River Basin Manage.*, 13, 215–227, 2015.
- Abdullah, A. D., Karim, U. F. A., Masih, I., Popescu, I., and van der Zaag, P.: Anthropogenic and tidal influences on salinity levels and variability of the Shatt al-Arab River, *Int. J. River Basin Manage.*, submitted, 2016.
- Afkhami, M., Shariat, M., Jaafarzadeh, N., Ghadiri, H., and Nabizadeh, R.: Development a Water Quality Management Model for Karun and Dez Rivers, Iran. *J. Environ. Health. Sci. Eng.*, 4, 99–106, 2007.
- Alber, M.: A Conceptual Model of Estuarine Freshwater Inflow Management, *Estuaries*, 25, 1246–1261, 2002.
- Al-Tawash, B., Al-Lafta, S. H., and Merkel, B.: Preliminary Assessment of the Shatt al Arab Riverine Environment, Basra Government, Southern Iraq, *J. Nat. Sci. Res.*, 3, 120–136, 2013.
- Becker, M. L., Luettich, R. A., and Mallin, M. A.: Hydrodynamic Behaviour of the Cape Fear River and Estuarine: A Synthesis and Observational Investigation of Discharge–Salinity Intrusion Relationships, *Estuar. Coast Shelf S.*, 88, 407–418, 2010.
- Bobba, A. G.: Numerical Modelling of Salt-water Intrusion due to Human Activities and Sea-level Change in the Godavari Delta, India, Special Issue: Towards integrated Water Resources Management for sustainable Development, *Hydrol. Sci.*, 47, S67–S80, 2002.
- Cai, H., Savenije, H. H. G., Yang, Q., Ou, S., and Lei, Y.: Influence of River Discharge and Dredging on Tidal Wave Propagation: Modaomen Estuary Case, *J. Hydraul. Eng.*, 138, 885–896, 2012.
- Cai, H., Savenije, H. H. G., and Jiang, C.: Analytical approach for predicting fresh water discharge in an estuary based on tidal water level observations, *Hydrol. Earth Syst. Sci.*, 18, 4153–4168, doi:10.5194/hess-18-4153-2014, 2014.
- Cai, H., Savenije, H. H. G., and Gisen, J. I. A.: A coupled analytical model for salt intrusion and tides in convergent estuaries, *Hydrol. Sci. J.*, 61, 402–419, doi:10.1080/02626667.2015.1027206, 2015.
- Das, A., Justic, D., Inoue, M., Hoda, A., Huang, H., and Park, D.: Impacts of Mississippi River Diversions on Salinity Gradients in a Deltaic Louisiana Estuary: Ecological and Management Implications, *Estuar. Coast Shelf S.*, 111, 17–26, 2012.
- Fawzi, M. N. and Mahdi, A. B.: Iraq's Inland Water Quality and Their Impact on the North-Western Arabian Gulf, *Marsh Bulletin*, 9, 1–22, 2014.
- Gisen, J. I. A., Savenije, H. H. G., Nijzink, R. C., and Wahab, A. K.: Testing a 1-D analytical salt intrusion model and its predictive equations in Malaysian estuaries, *Hydrol. Sci. J.*, 60, 156–172, 2015a.
- Gisen, J. I. A., Savenije, H. H. G., and Nijzink, R. C.: Revised predictive equations for salt intrusion modelling in estuaries, *Hydrol. Earth Syst. Sci.*, 19, 2791–2803, doi:10.5194/hess-19-2791-2015, 2015b.
- Helland-Hansen, E., Holtedahl, T. and Liye, K. A.: Environmental Effects. Vol. 3. Hydropower Development, Norwegian Institute of Technology, Trondheim, 1995.
- Horrevoets, A. C., Savenije, H. H. G., Schuurman, J. N., and Graas, S.: The Influence of River Discharge on Tidal Damping in Alluvial Estuaries, *J. Hydrol.*, 294, 213–228, 2004.
- Ippen, A. T. and Harleman, D. R. F.: One-Dimensional Analysis of Salinity Intrusion in Estuaries, Technical Bulletin No. 5, Committee on Tidal Hydraulics, Corps of Engineers, US Army, 1961.
- Liu, W., Hsu, M., Wu, C., Wang, C., and Kuo, A. Y.: Modeling Salt Water Intrusion in Tanshui River Estuarine System–Case-Study Contrasting Now and then, *J. Hydraul. Eng.*, 130, 849–859, 2004.
- MacKay, H. M. and Schumann, E. H.: Mixing and circulation in the Sundays river estuary, South Africa, *Estuar. Coast Shelf S.*, 31, 203–216, 1990.

- Nguyen, A. D. and Savenije, H. H.: Salt intrusion in multi-channel estuaries: a case study in the Mekong Delta, Vietnam, *Hydrol. Earth Syst. Sci.*, 10, 743–754, doi:10.5194/hess-10-743-2006, 2006.
- Prandle, D.: On Salinity Regimes and the Vertical Structure of Residual Flows in Narrow Estuaries, *Estuar. Coast Shelf S.*, 20, 615–635, 1985.
- Risley, J. C., Guertin, D. P., and Fogel, M. M.: Salinity Intrusion Forecasting System for Gambia River Estuary, *J. Water Res. Pl.-ASCE*, 119, 339–352, 1993.
- Salarijazi, M., Akhond-Ali, A.-M., Adib, A., and Daneshkhah, A.: Trend and change-point detection for the annual stream-flow series of the Karun River at the Ahvaz hydrometric station, *Afr. J. Agric. Res.*, 7, 4540–4552, 2012.
- Savenije, H. H. G.: One-Dimensional Model for Salinity Intrusion in Alluvial Estuaries, *J. Hydrol.*, 85, 87–109, 1986.
- Savenije, H. H. G.: Salinity Intrusion Model for High-Water Slack, Low Water-Slack, and Mean Tide on Spread Sheet, *J. Hydrol.*, 107, 9–18, 1989.
- Savenije, H. H. G.: Predictive Model for Salt Intrusion in Estuaries, *J. Hydrol.*, 148, 203–218, 1993.
- Savenije, H. H. G.: Salinity and tides in alluvial estuaries, Amsterdam: Elsevier, 1–150, 2005.
- Savenije, H. H. G.: Salinity and tides in alluvial estuaries, completely revised 2nd Edn., Delft University of Technology, available at: <http://salinityandtides.com> (last access: 20 January 2015), 2012.
- Savenije, H., Cai, H., and Gisen, J.: Developing a coupled analytical model for analyzing salt intrusion in alluvial estuaries, AGU Fall Meeting Abstracts 1, 1664, 2013.
- Sklar, F. H. and Browder, J. A.: Coastal Environment Impacts Brought about by Alteration to Freshwater Flow in the Gulf of Mexico, *Environ. Manage.*, 22, 547–562, 1998.
- UN-ESCWA and BGR (United Nations Economic and Social Commission for Western Asia; Bundesanstalt für Geowissenschaften und Rohstoffe): Inventory of Shared Water Resources in Western Asia, Beirut, 2013.
- Van der Burgh, P.: Ontwikkeling van een methode voor voorspellen van zoutverdelingen in estuaria, kanalen en zeeën, Rijkswaterstaat Rapp, 10–72, 1972.
- Vaz, N., Dias, J. M., and Leitao, P. C.: Three-Dimensional Modelling of a Tidal Channel: The Espinheiro Channel (Portugal), *Cont. Shelf Res.*, 29, 29–41, 2009.
- Vörösmarty, C. J. and Sahagian, D.: Anthropogenic Disturbance of the Terrestrial Water Cycle, *BioScience*, 50, 753–765, 2000.
- Wang, Y., Liu, Z., Gao, H., Ju, L., and Guo, X.: Response of Salinity Distribution around the Yellow River mouth to Abrupt Changes in River Discharge, *Cont. Shelf Res.*, 31, 685–694, 2011.
- Whitney, M. M.: A Study on River Discharge and Salinity Variability in the Middle Atlantic Bight and Long Island Sound, *Cont. Shelf Res.*, 30, 305–318, 2010.
- Wong, K. C.: On the relationship between long-term salinity variations and river discharge in the middle reach of the Delaware estuary, *J. Geophys. Res.*, 100, 20705–20713, doi:10.1029/95JC01406, 1995.
- Zhang, E. F., Savenije, H. H. G., Chen, S. L., and Mao, X. H.: An analytical solution for tidal propagation in the Yangtze Estuary, China, *Hydrol. Earth Syst. Sci.*, 16, 3327–3339, doi:10.5194/hess-16-3327-2012, 2012.