

Other Traditions

Inter cultural place-making, and forestation of the Stockholm City Library, Sweden.

The project "Other Traditions" explores diverse knowledge systems, emphasizing oral traditions and ecological knowledge exchanges. Set in Stockholm, Sweden, the project focuses on the Stockholm City Library, a significant architectural landmark, and its surrounding areas, including Observatory Hill. The project addresses three key issues: providing library spaces for informal meetings, creating inclusive spaces for minority groups, particularly refugees, and enhancing biodiversity.

The project proposes connecting the library with a nearby annex using small workrooms, creating an urban forest as a living laboratory, and incorporating culturally resonant spaces like the Qaja for storytelling and language learning. The urban forest expansion aligns with Stockholm's environmental goals, enhancing air quality and providing leisure space. The design integrates with the local landscape, ensuring accessibility and monumentality, while also respecting the historical significance of the site.

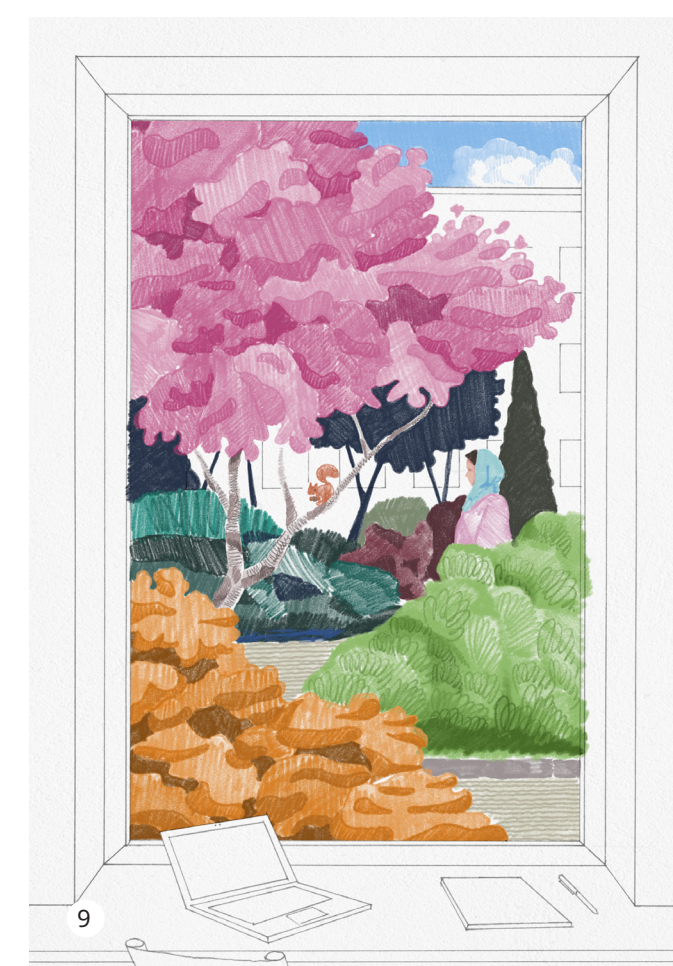
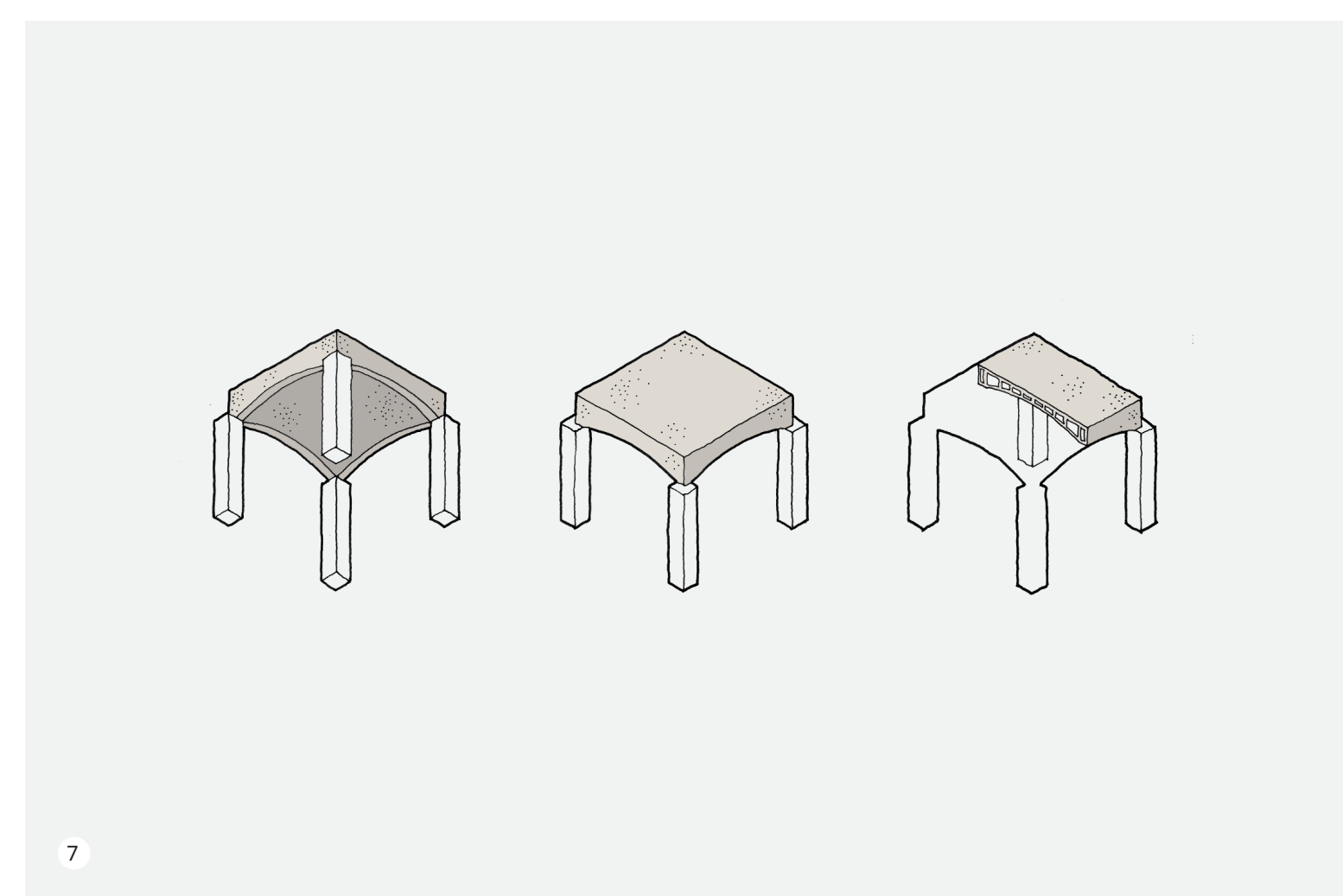
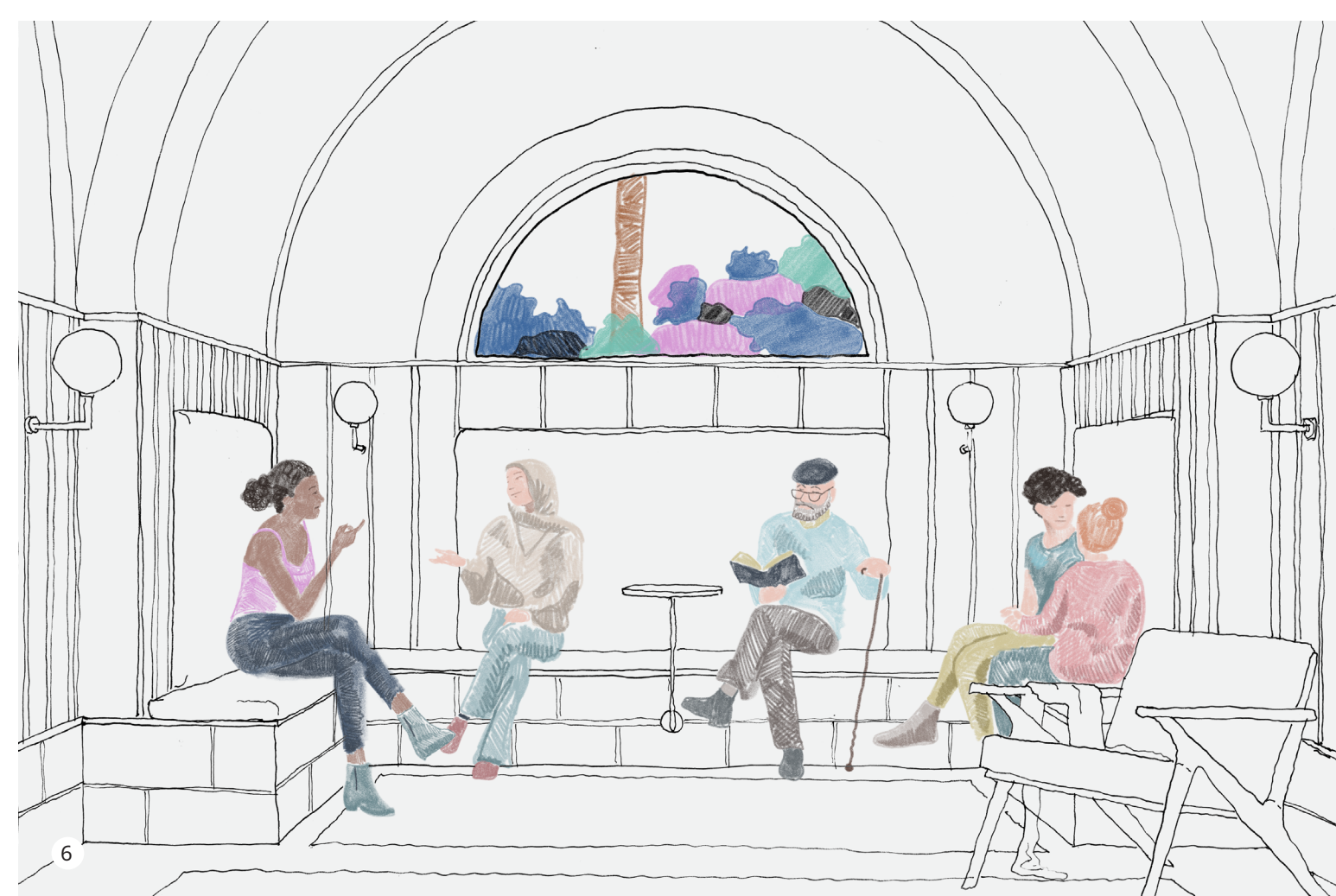
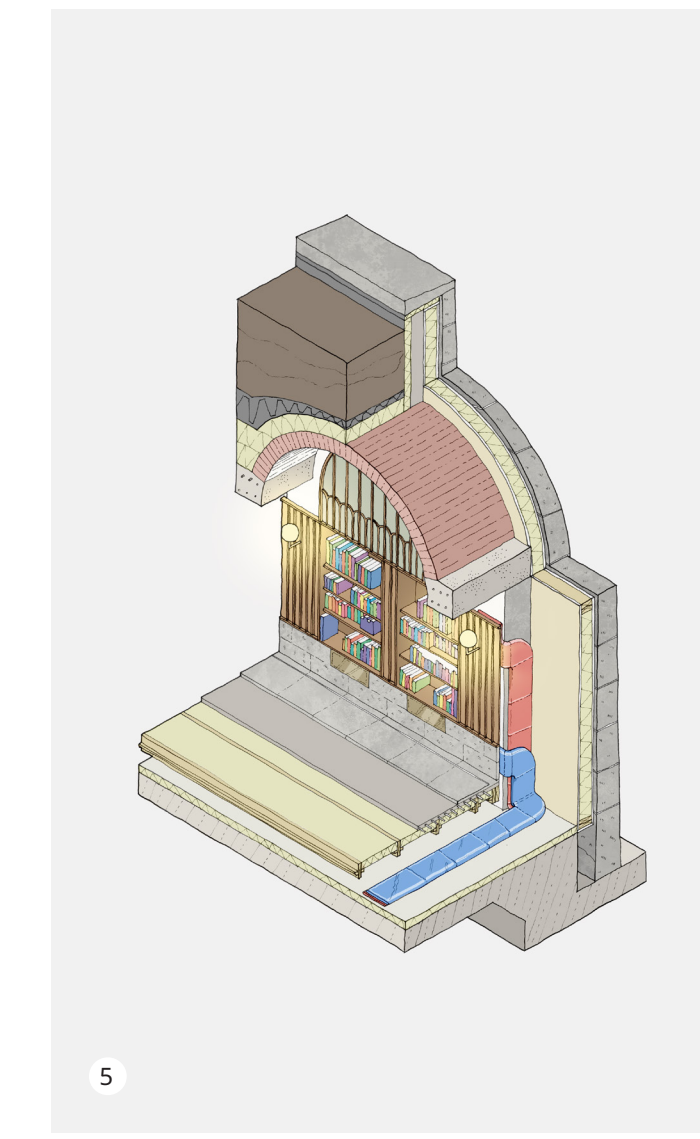
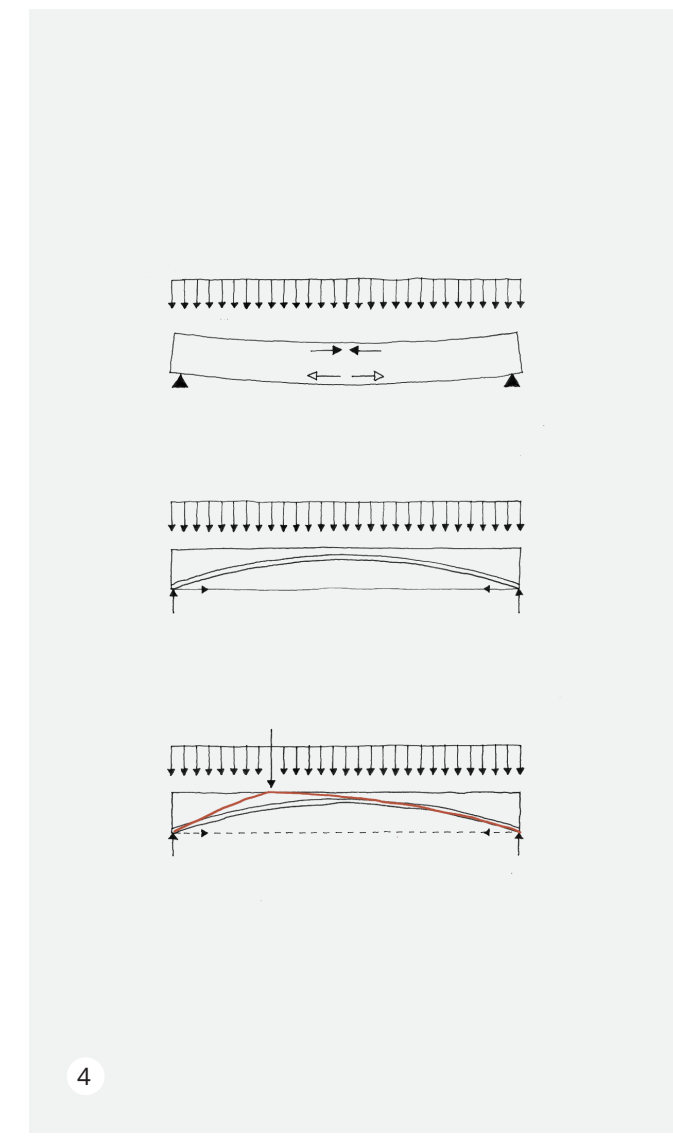
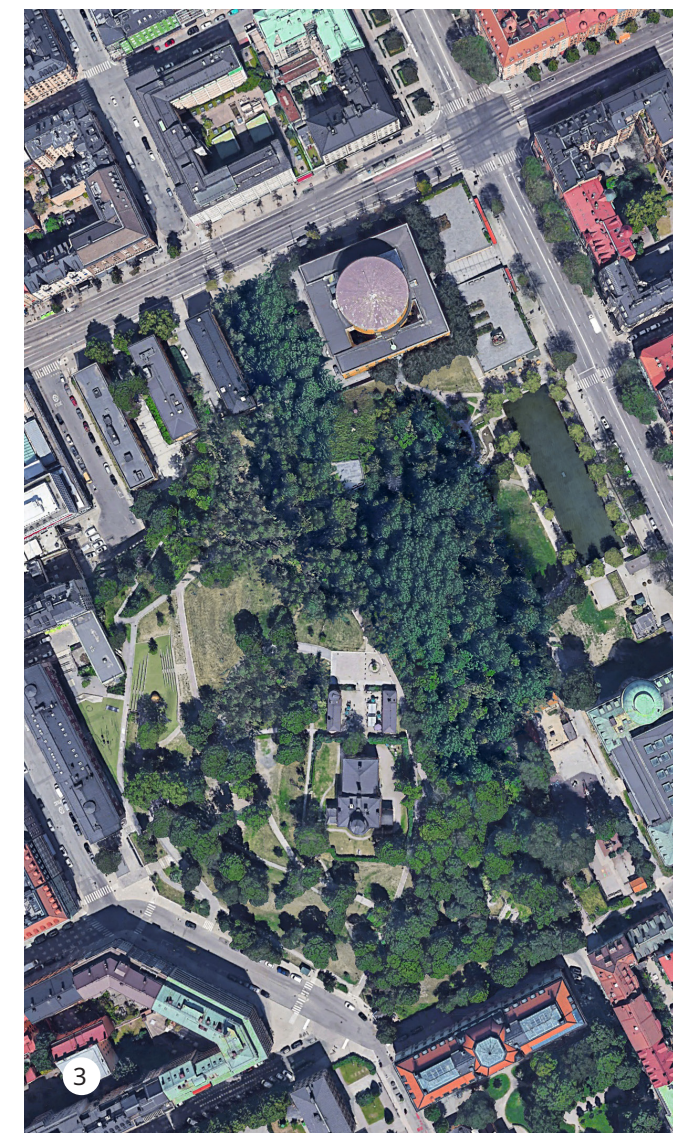
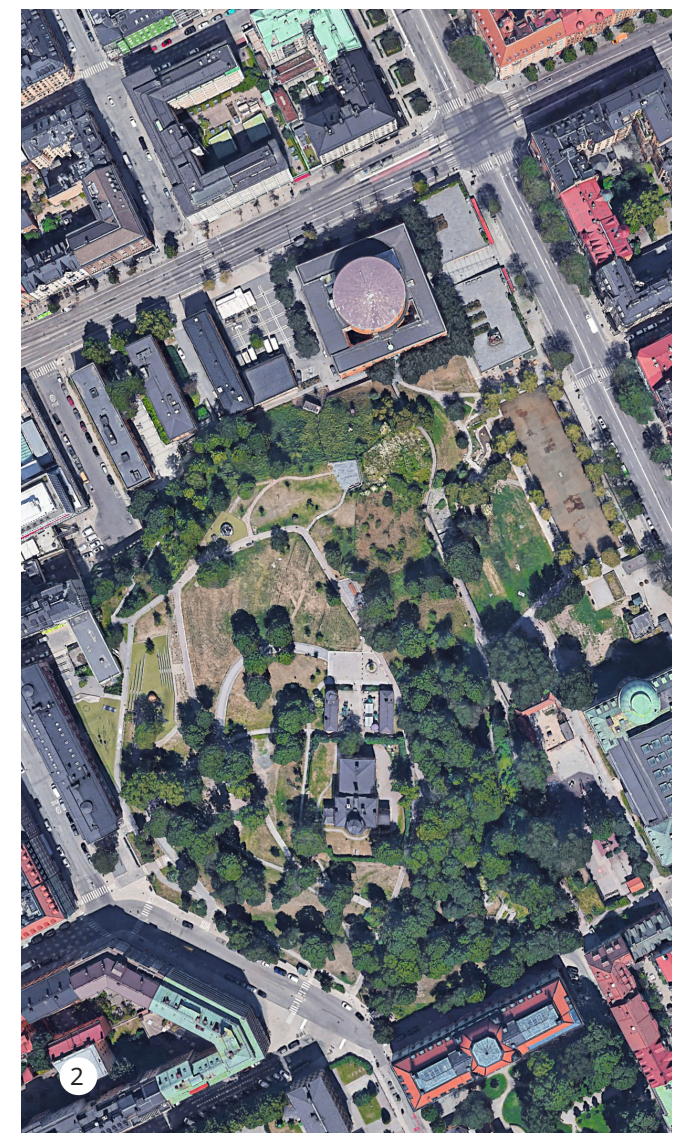
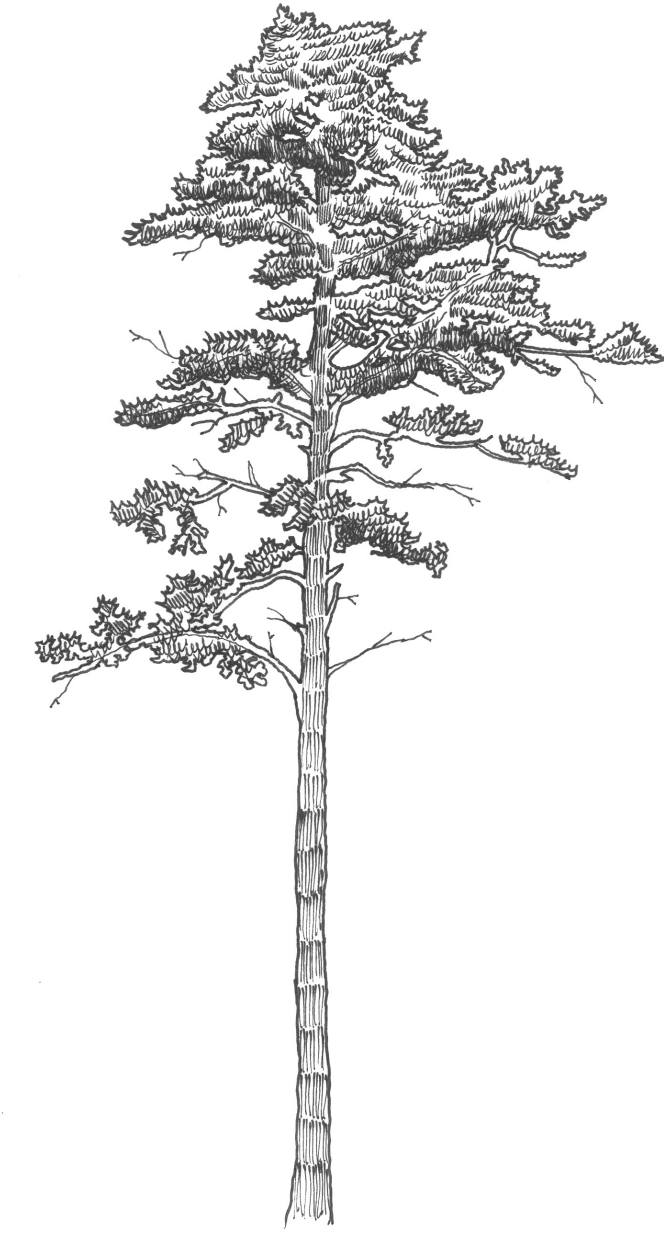


Fig. 1. View from Observatory Hill towards the library building. 1:100 scale.
 Fig. 2. Aerial photograph, Spring/Summer 2022. Source: Google Earth.
 Fig. 3. Aerial render, digitally enhanced.
 Fig. 4. Applied and sectioned facade, showing the structure and material. 2D Structural drawing.
 Fig. 5. Interior perspective, showing the library building and the courtyard. 1:100 scale.
 Fig. 6. Interior perspective, showing the library building and the courtyard. 1:100 scale.
 Fig. 7. Sectional model as a graphic diagram. 1:100 scale. Material: wood and concrete.
 Fig. 8. Aerial photograph, 1:1000 scale.
 Fig. 9. Exterior view of the South wing, corner and plaza. 1:100 scale.
 Fig. 10. Sectional model as a graphic diagram. 1:100 scale. Material: wood and concrete.
 Fig. 11. Aerial photograph, 1:1000 scale.
 Fig. 12. Exterior view of the South wing, corner and plaza. 1:100 scale.
 Fig. 13. Aerial photograph, 1:1000 scale.
 Fig. 14. Exterior view of the South wing, corner and plaza. 1:100 scale.

