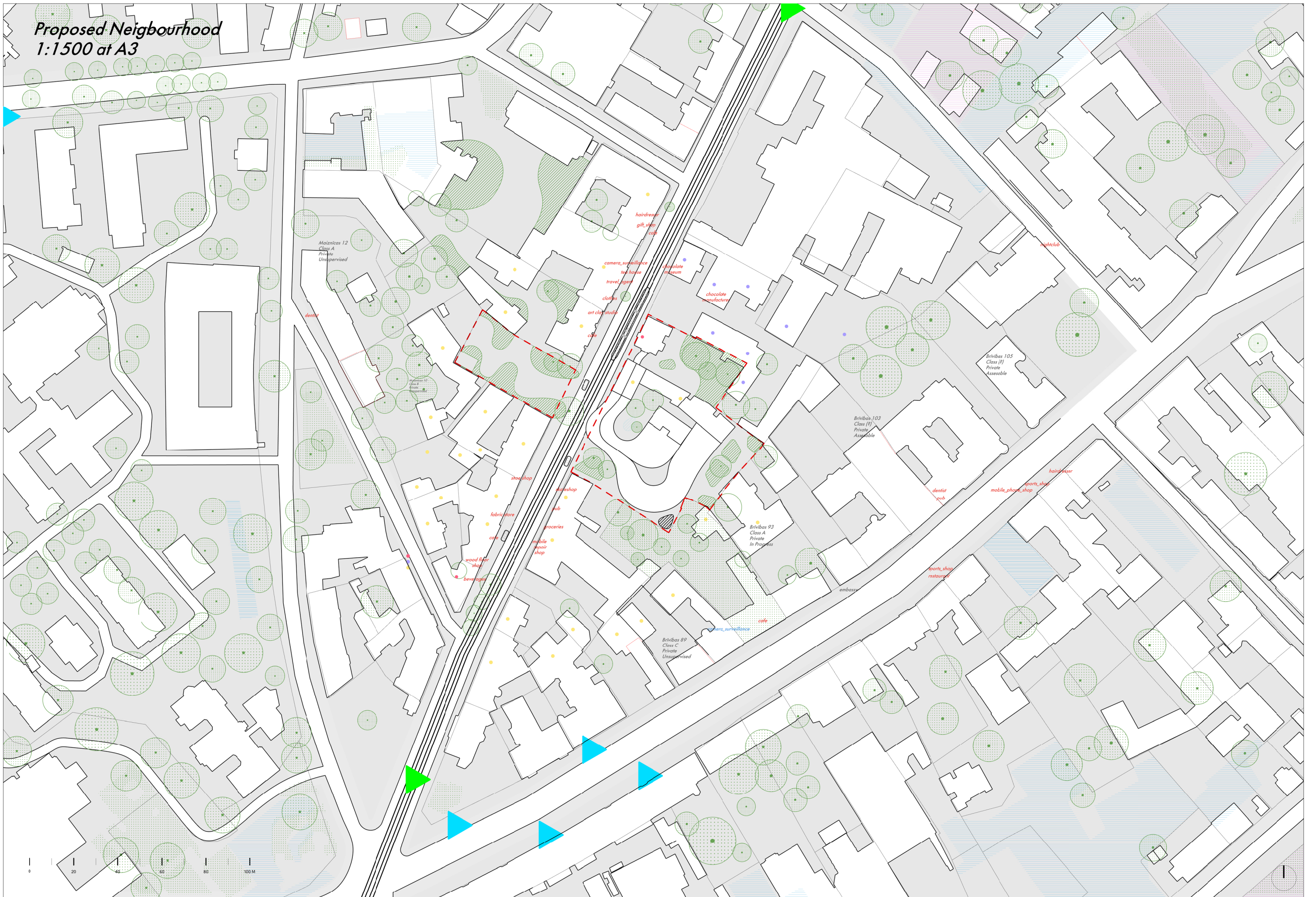
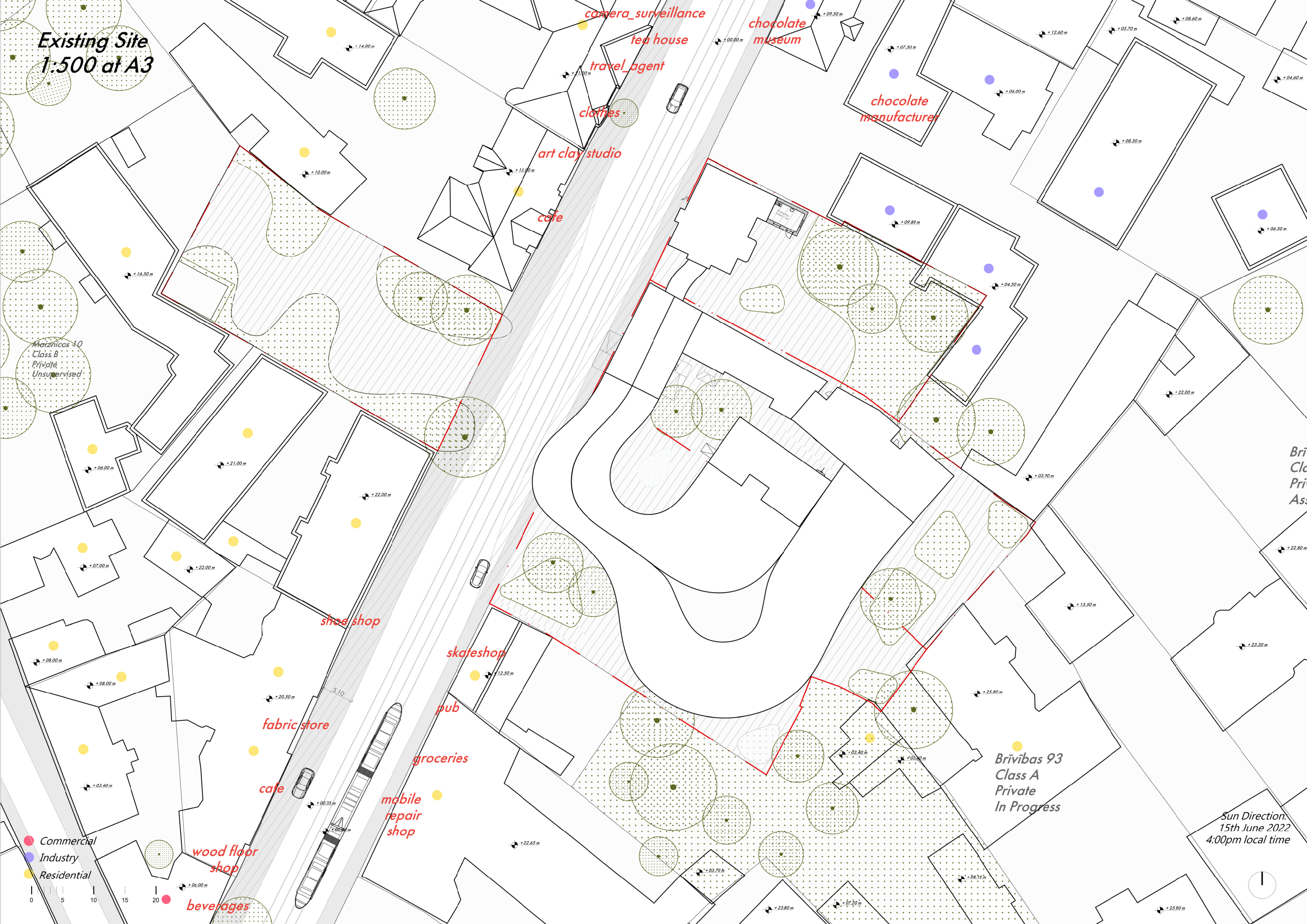


Proposed Neighbourhood  
1:1500 at A3



Existing Site  
1:500 at A3



camera\_surveillance

tea house

travel\_agent

clothes

art clay studio

cafe

chocolate museum

chocolate manufacturer

shoe shop

skateshop

pub

groceries

mobile repair shop

fabric store

cafe

wood floor shop

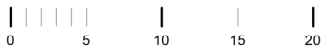
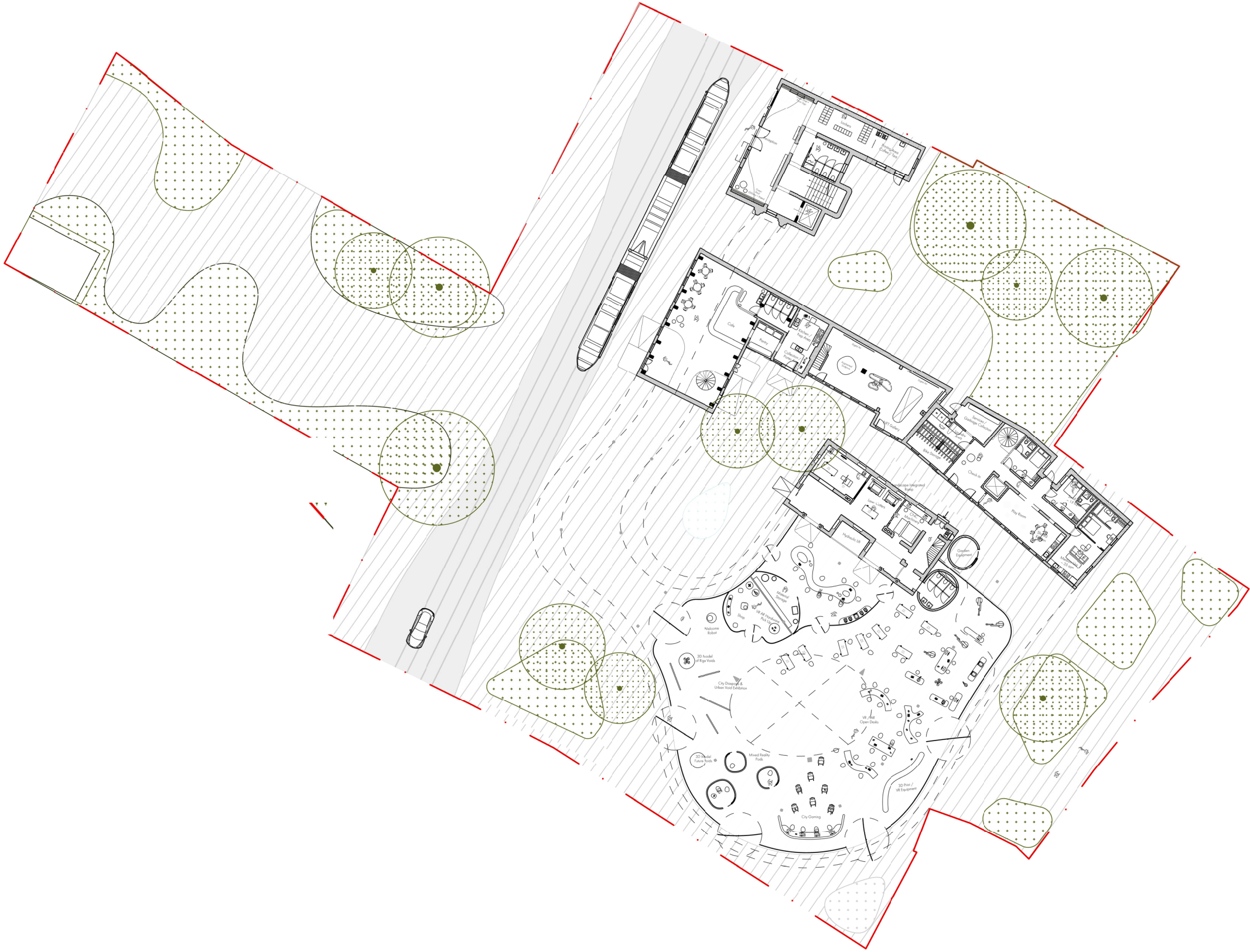
beverages

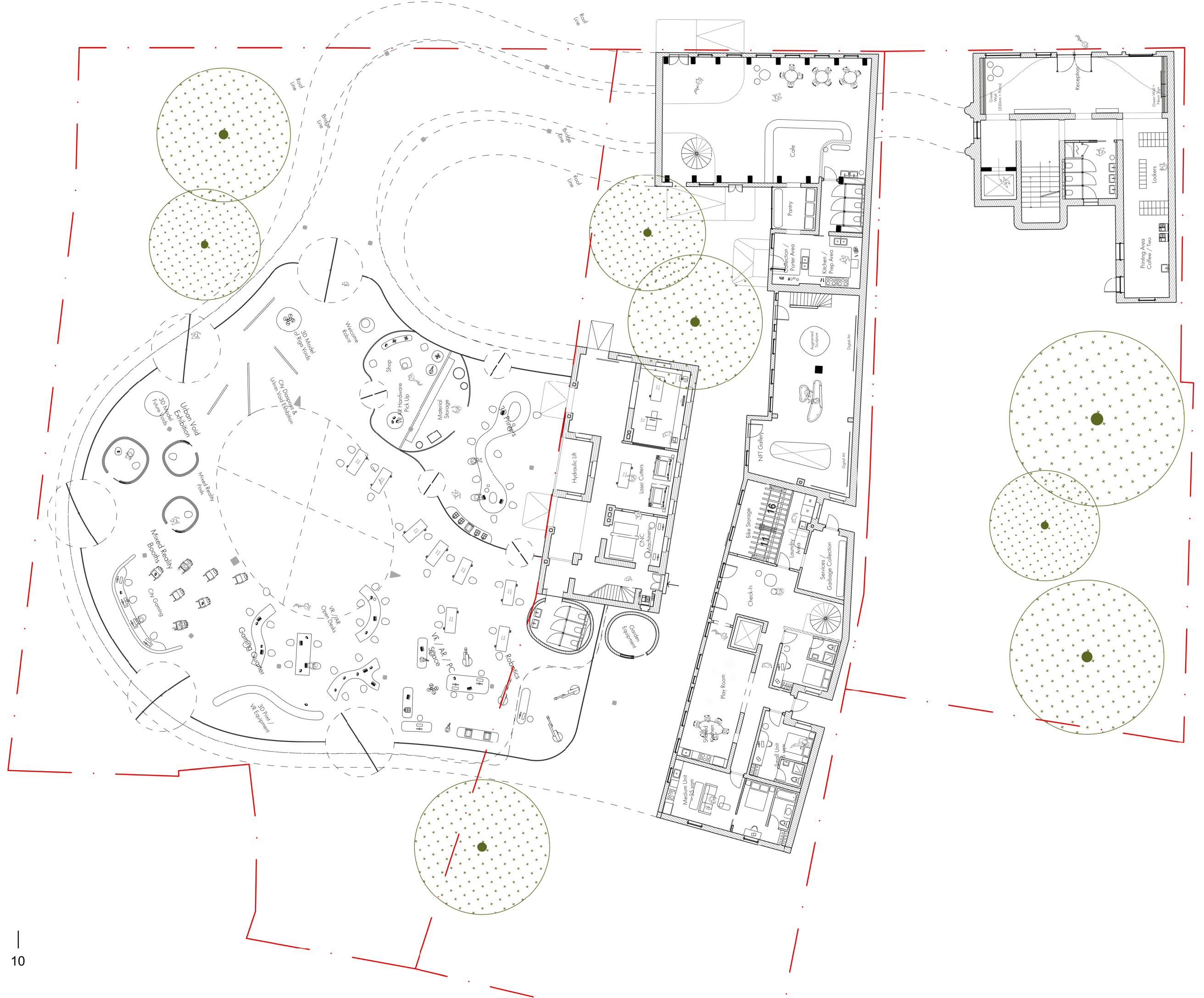
Brivibas 93  
Class A  
Private  
In Progress

- Commercial
- Industry
- Residential

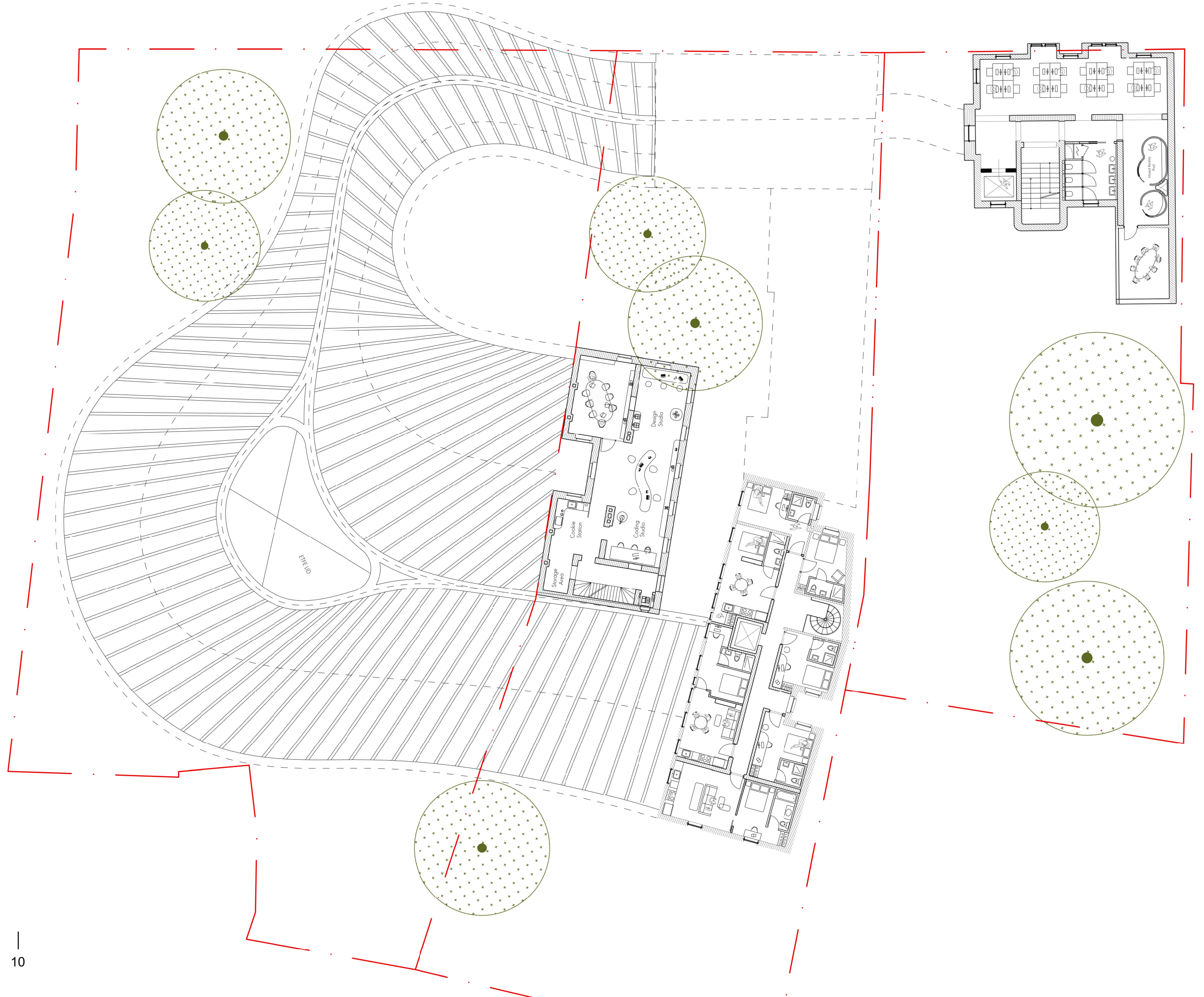
Sun Direction,  
15th June 2022  
4:00pm local time

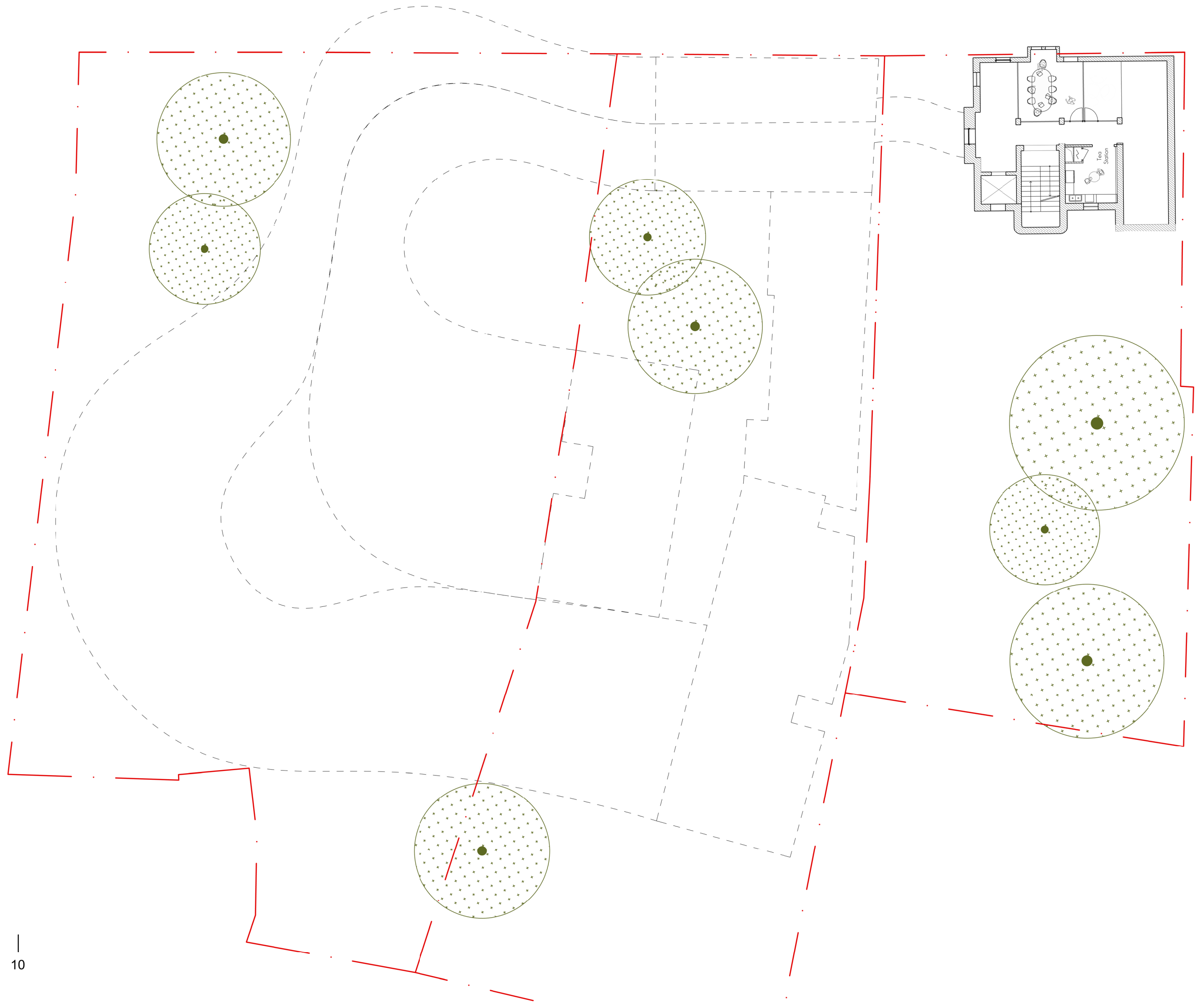
Proposed Landscape  
1:500 at A3





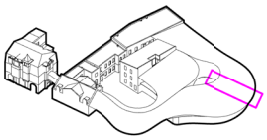








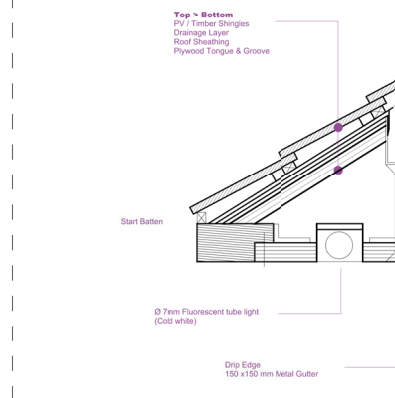




# VERTICAL SECTION AA 1/20 @ A3

- Top > Bottom**
- 20 mm PV/Spruce shingles
  - Timber battens + Cable path
  - 10 mm Drainage layer
  - Two-layer bituminous seal
  - Vapour Barrier
  - 150 mm Eiobased Thermal insulation
  - Vapour Barrier
  - 2400x1200x35 mm Plywood as structural surface
  - 150 - 250 mm Gulam Rafter

ROOF DETAIL FF' 1/5 @ A3



- Top > Bottom**
- PV / Spruce Shingles
  - Drainage Layer
  - Roof Sheeting
  - Plywood Tongue & Groove

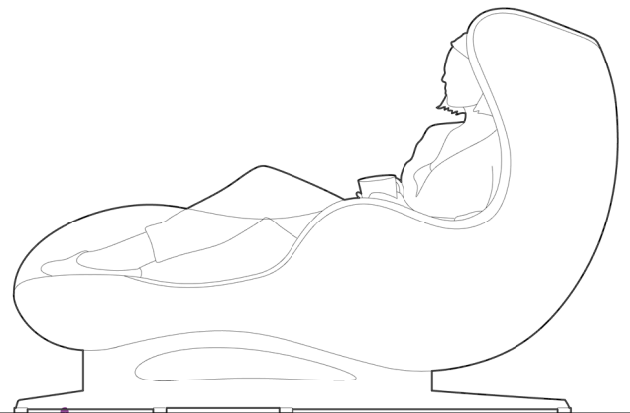
Start Batten

Ø 7mm Fluorescent tube light (Cold white)

Drip Edge 150 x 150 mm Metal Gutter

- Left > Right**
- 100 mm Mycelium acoustic insulation
  - 50 mm Timber frame
  - 10 - 20 mm Green screen set up

Rentable Mixed Reality Pods



+3.8 m



- Top > Bottom**
- 10 mm Oak timber slats, oiled finish
  - 45 mm heating screed; polythene sheeting
  - 45 mm Impact-sounds insulation
  - 75 mm Thermal insulation
  - Vapour barrier
  - 5-layer CLT Slab

- Left > Right**
- Facade glass, tripple glazed, fully tempered
  - Structural silicone sealant
  - Glass fin, toughened three times 12mm each (SentryGlas interlayer)

- Top > Bottom**
- Timber terrazzo tiles
  - 45 mm heating screed; polythene sheeting
  - 45 mm Impact-sounds insulation
  - 75 mm Thermal insulation ??

VR / AR Open Desks



Exterior

Interior

GLASS FIN DETAIL EE' 1/5 @ A3



- Exterior Handicap:
- Reclaimed Granite
  - Cobble Curb 150x100
  - Sand
  - Crushed gravel bedding
  - Insulation
  - Steel Plate
  - Leveling Plate
  - Concrete Foundation
  - Drainage Channel
  - Filter Layer

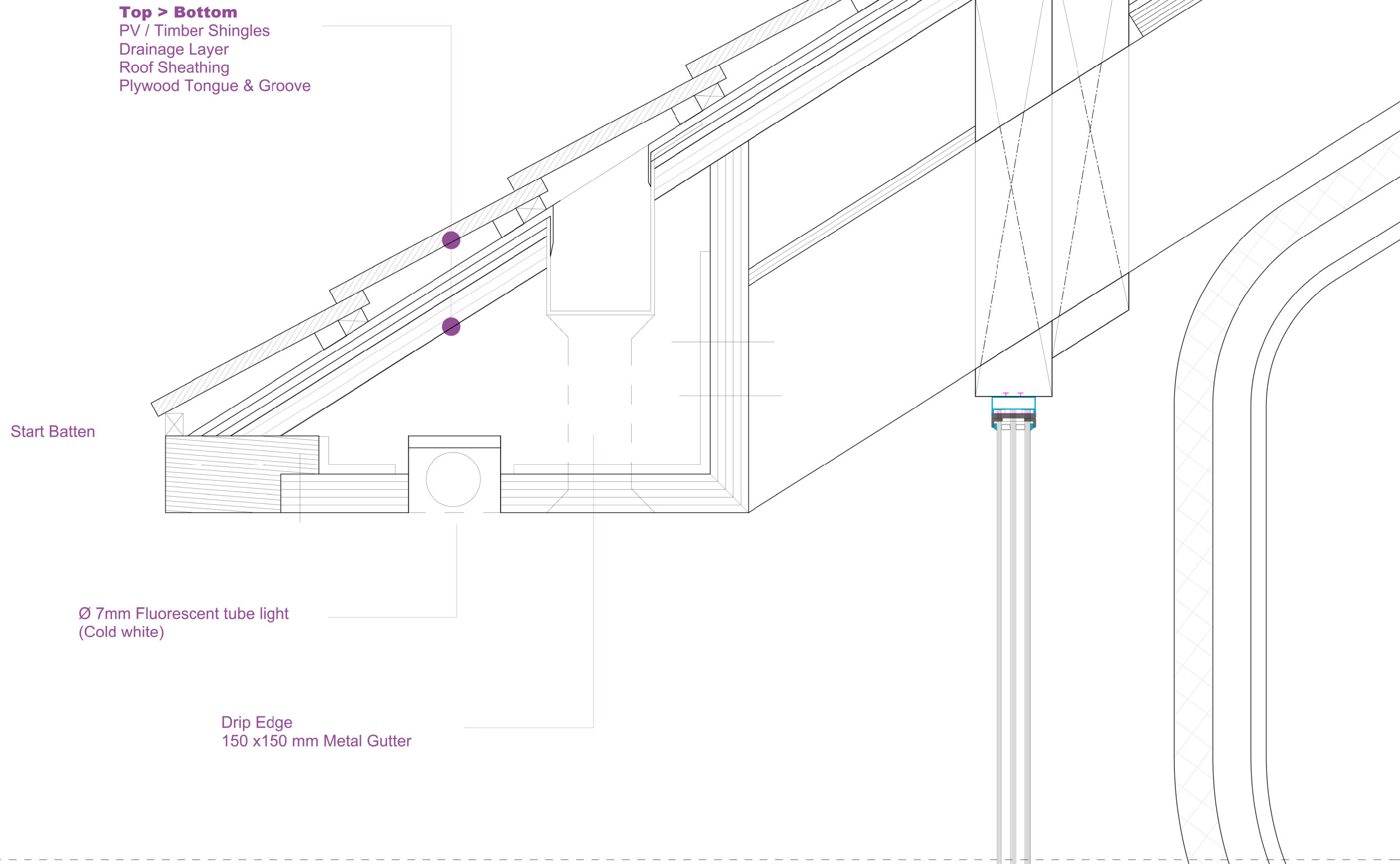
Ventilation & Service Trench

Air Supply Duct Cable Tray

+00 m



ROOF DETAIL FF'  
1/5 @ A3



**Top > Bottom**  
PV / Timber Shingles  
Drainage Layer  
Roof Sheathing  
Plywood Tongue & Groove

Start Batten

Ø 7mm Fluorescent tube light  
(Cold white)

Drip Edge  
150 x150 mm Metal Gutter

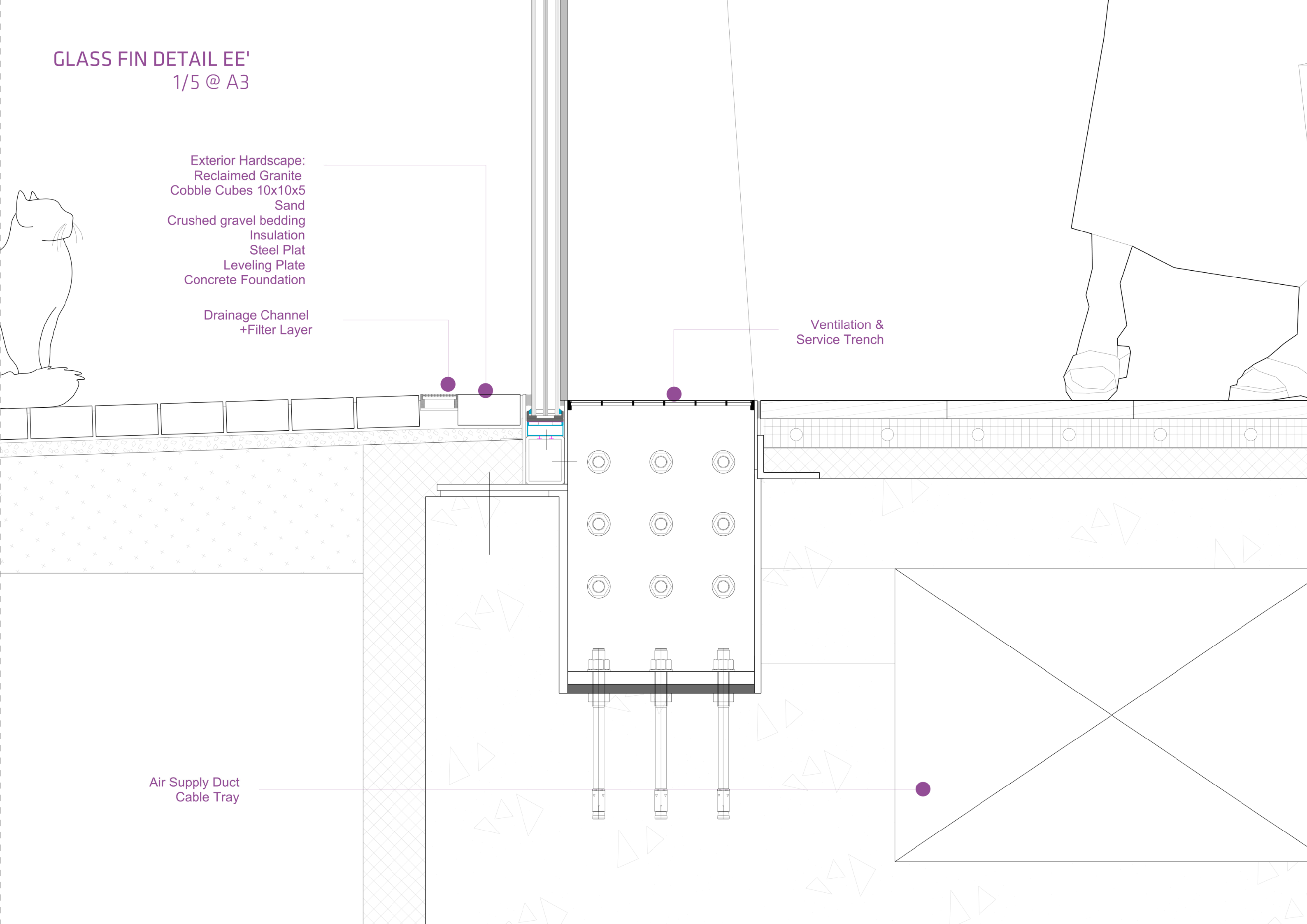
GLASS FIN DETAIL EE'  
1/5 @ A3

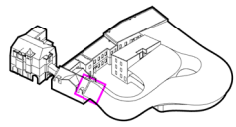
Exterior Hardscape:  
Reclaimed Granite  
Cobble Cubes 10x10x5  
Sand  
Crushed gravel bedding  
Insulation  
Steel Plat  
Leveling Plate  
Concrete Foundation

Drainage Channel  
+Filter Layer

Ventilation &  
Service Trench

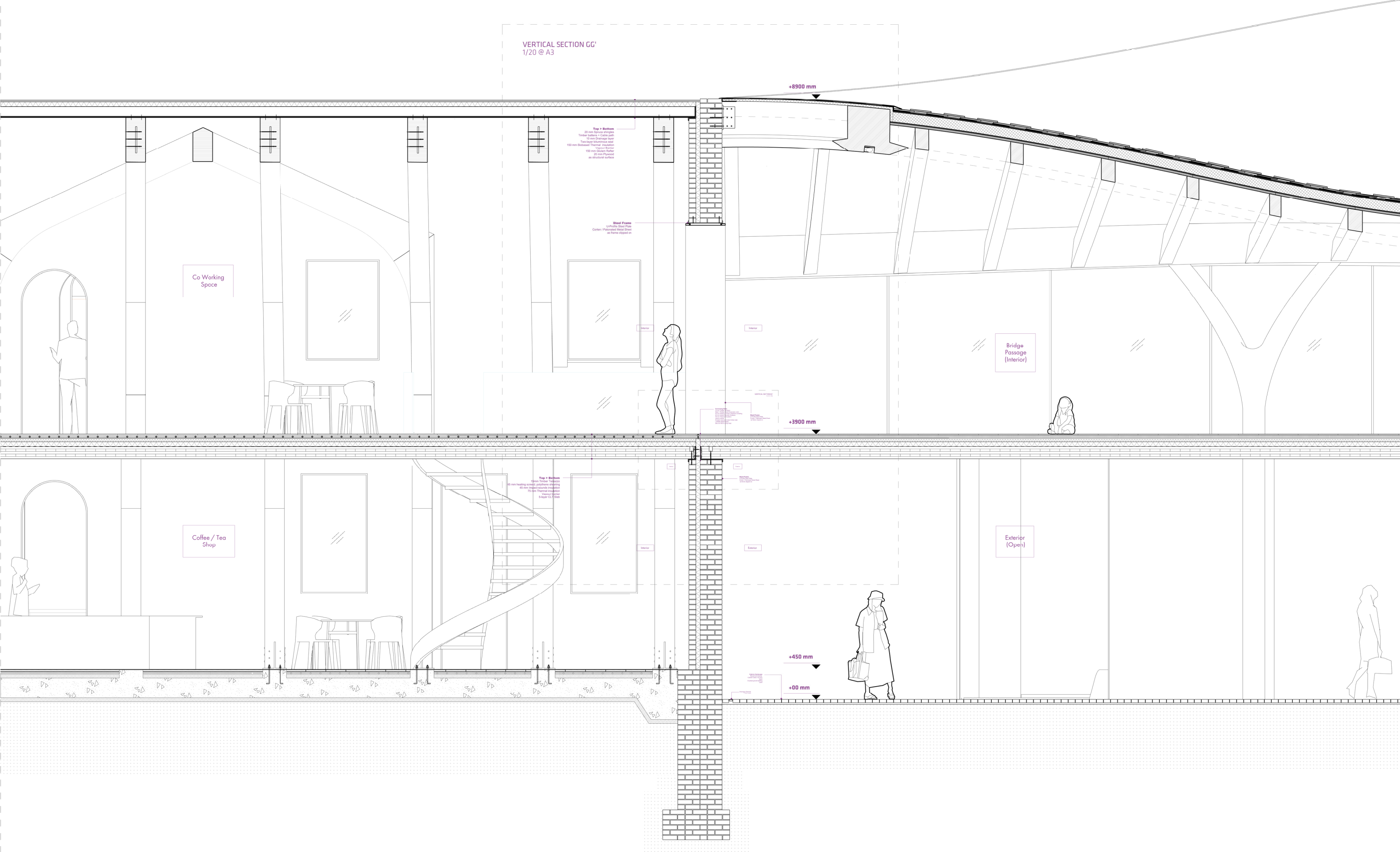
Air Supply Duct  
Cable Tray





VERTICAL SECTION GG'  
1/50 @ A3

VERTICAL SECTION GG'  
1/20 @ A3



Top + Bottom  
20 mm Gypsum Board  
Timber Joists + Cable with  
20 mm Gypsum Board  
100 mm Blended Thermal Insulation  
Vapor Barrier  
150 mm Gypsum Board  
20 mm Plywood  
as structural surface

Steel Frame  
12 Profile Steel Beam  
Center / Expanded Metal Sheet  
as frame support on

Top + Bottom  
120 mm Timber Joists  
15 mm Insulating Mineral Wool  
40 mm Insulating Mineral Wool  
15 mm Thermal Insulation  
5-layer CL 1500

Co Working Space

Coffee / Tea Shop

Bridge Passage (Interior)

Exterior (Open)

+8900 mm

+3900 mm

+450 mm

+00 mm

VERTICAL SECTION GG'  
1/20 @ A3



VERTICAL SECTION GG'  
1/5 @ A3

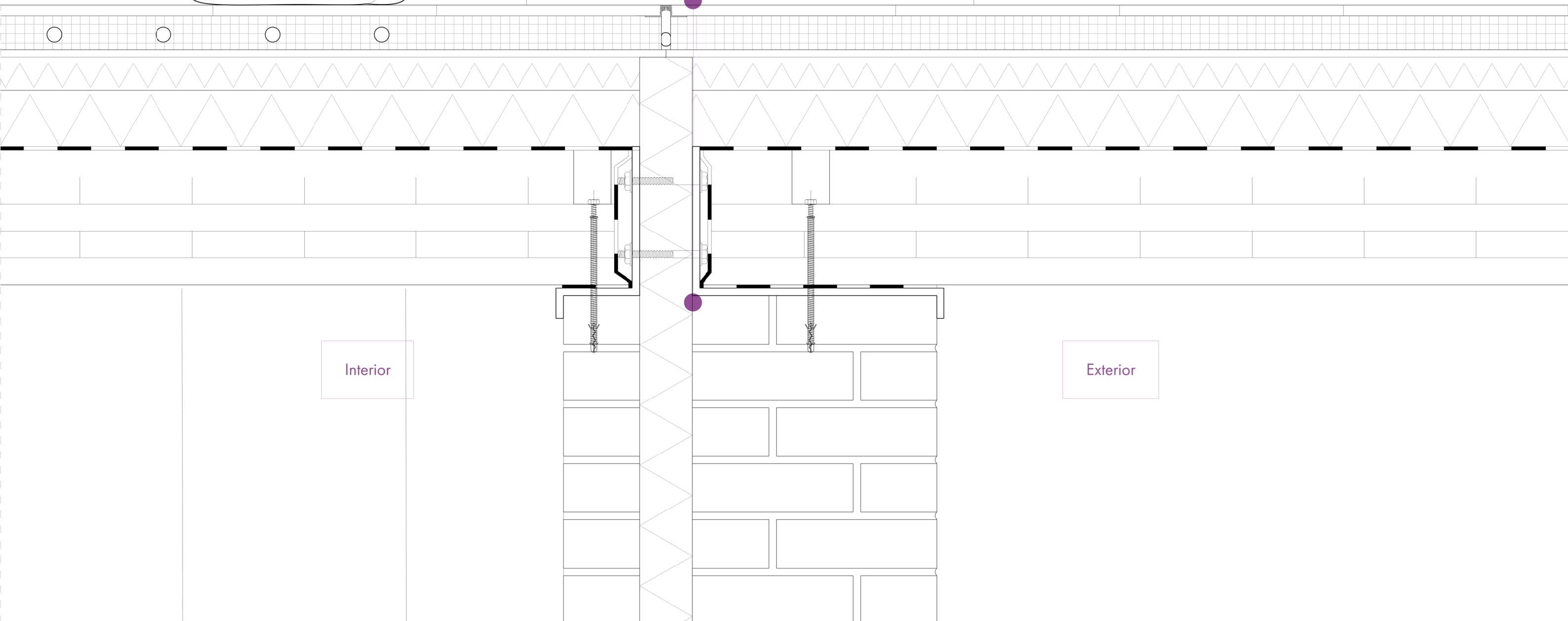


**Connecting Slabs**

- 15 mm Timber Terrazzo
- Steel + Rubber Insert Expansion Joint
- 45 mm Heating Screed; polythene sheeting
- 45 mm Impact-sounds insulation
- 75 mm Thermal Insulation
- Vapour barrier
- 5-Layer cross laminated timber slab
- L-Profile Steel Frame
- 500 mm Brick Cavity Wall

**Steel Frame**

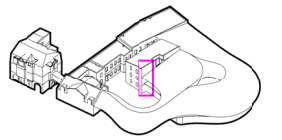
- U-Profile Steel Plate
- Corten / Patonated Metal Sheet  
as frame clipped on



Interior

Exterior

VERTICAL SECTION BB'  
1/20 @ A3



BioBased 501s Spray Foam Insulation

Interior

Exterior

Design / Coding Studio

VERTICAL SECTION DETAIL CC'  
1/5 @ A3

Top > Bottom  
Metal flashing collar over  
membrane flashing collar  
overlap collar onto lower layer of  
roof shingle  
20 mm Spruce shingles  
10 mm Drainage layer  
Two-layer bituminous seal  
Vapour Barrier  
125 - 240 mm BioBased Thermal Insulation  
27 - 35 mm Plywood as structural surface  
100 - 250 mm Glulam Rafter

DD'

30 mm Recycled Plastic Framed

600.00

Decentralized Autonomous  
Organization (DAO)  
Policy Studio

Interior

Interior

Top to Bottom  
15 - 25 mm Timber Terrazo  
150 - 200 mm Raised Floor  
280 mm Existing Timber Floor



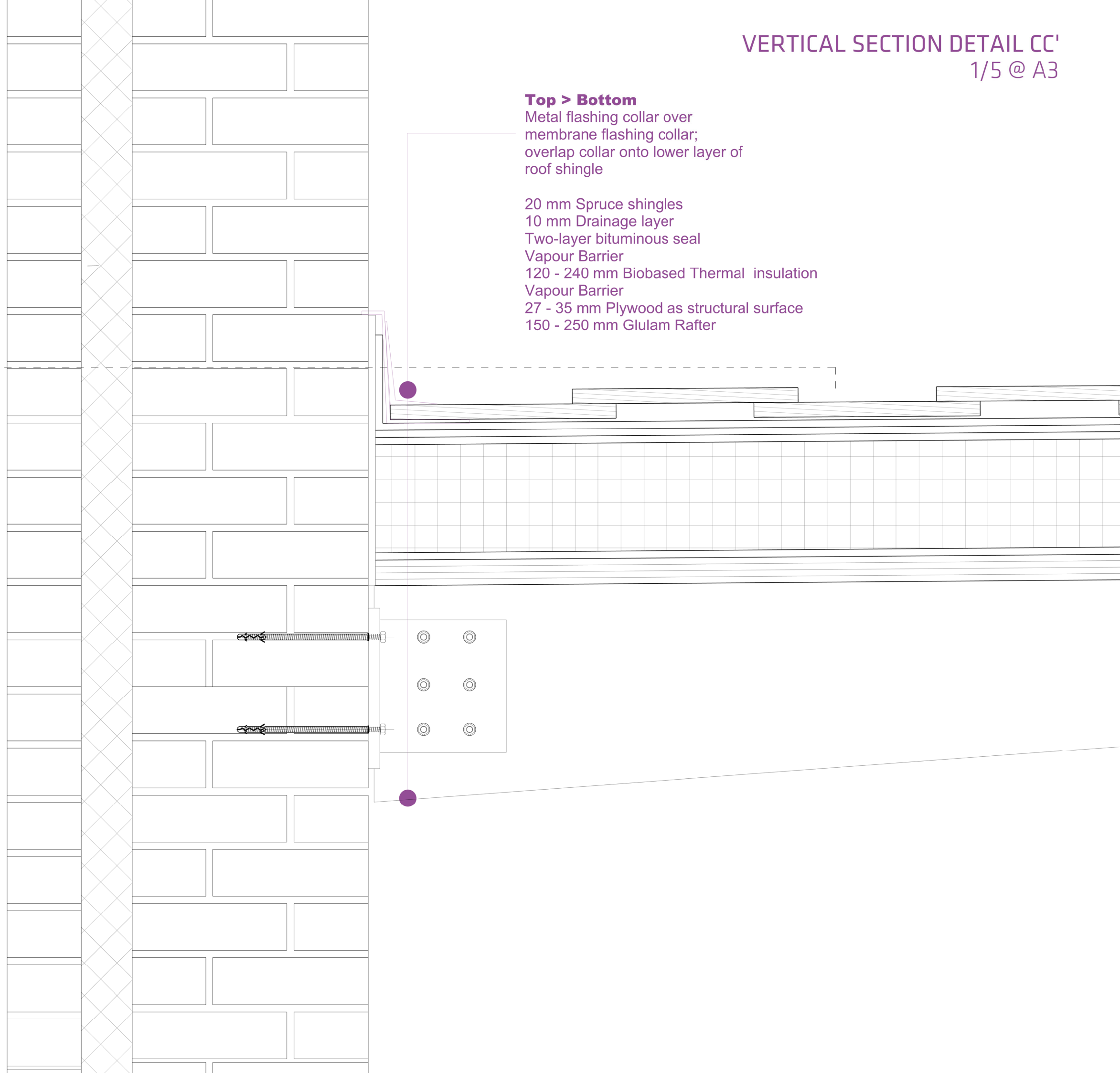
VERTICAL SECTION DETAIL CC'  
1/5 @ A3

**Top > Bottom**

Metal flashing collar over  
membrane flashing collar;  
overlap collar onto lower layer of  
roof shingle

20 mm Spruce shingles  
10 mm Drainage layer  
Two-layer bituminous seal  
Vapour Barrier  
120 - 240 mm Biobased Thermal insulation  
Vapour Barrier  
27 - 35 mm Plywood as structural surface  
150 - 250 mm Glulam Rafter

DD'





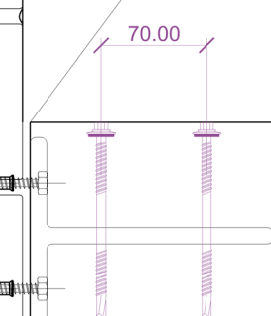
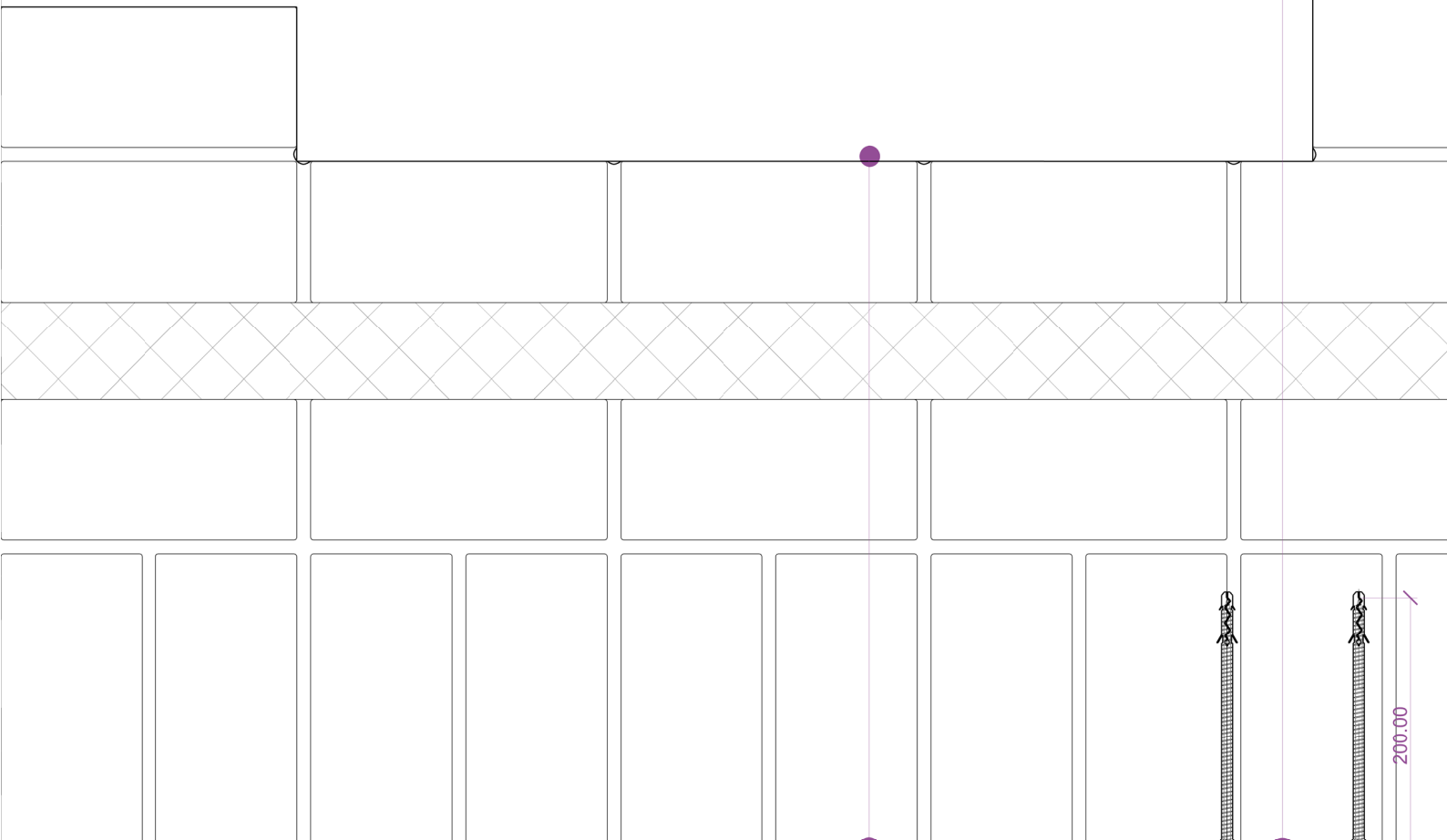
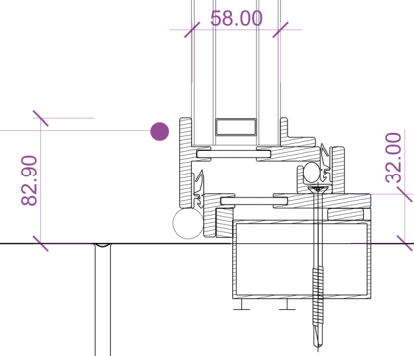
HORIZONTAL SECTION DETAIL DD'  
1/5 @ A3

**Glass Gate**  
Black steel frame on a hinge  
Double glazed

Interior

Interior  
(Hydrolic Lift 'Shaft')

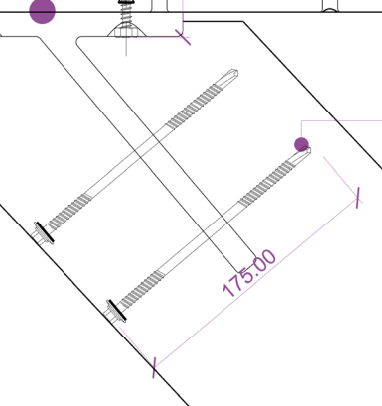
**Steel Connection**  
220x175x16 mm Concealed  
bracket (Alumidi)  
200 mm Extra long nylong anchor /  
Screw



**Right > Left**  
Brick Cavity Wall (Single Layer)  
70 mm BioBased Spray Foam (Biotex)  
Brick Cavity Wall (Two Layers)

**Self-Drilling Dowel**  
175x11mm In-Situ adjustable screw

**Post**  
200x150 mm Glulam beam



HORIZONTAL SECTION DD'  
1/20 @ A3

