

St. Elisabeth Heritage garden

Reflection P4

Heritage & Architecture

Seunghan Yeum (4572076)

Aspect 1

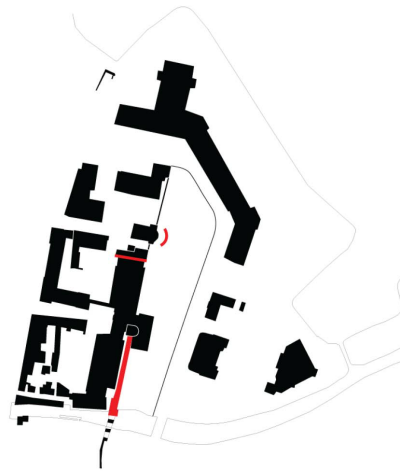
The relationship between research and design

I did research in three aspects which are urban analysis, building analysis and cultural value analysis. The results of each study are as follows.



Blocked accessibility

*Glass passage, fences and river disconnect route



Lost value of heritages

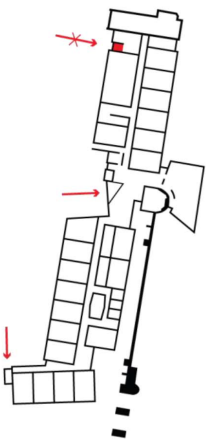
*Surrounding of heritage is being neglected



Limited use of public green space

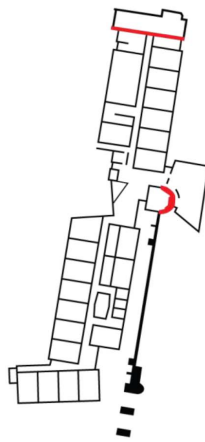
*Lake park is occupied by high school students
*Green space behind of pastorie is out of control

For urban level, accessibility to site was blocked because of the glass passage, fences and river. Also, surrounding of heritages (such as citywall, Berkelpoort, chapel and Pastorie tower remains) is being neglected. At last but not least, there are limited use of public green space.



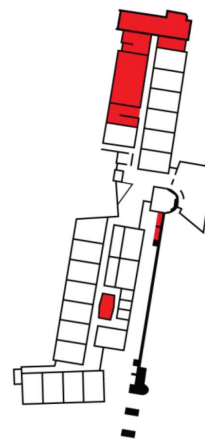
Blocked accessibility

*North wing entrance is blocked



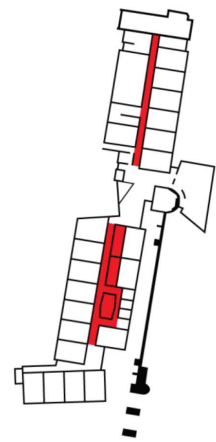
Lost value of heritages

*Chapel façade and tower are hidden



Broken function

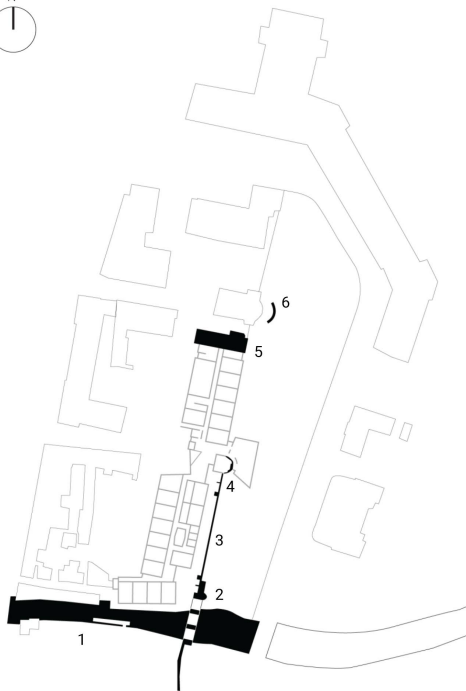
*Chapel, kitchen and city wall terrace are vacant



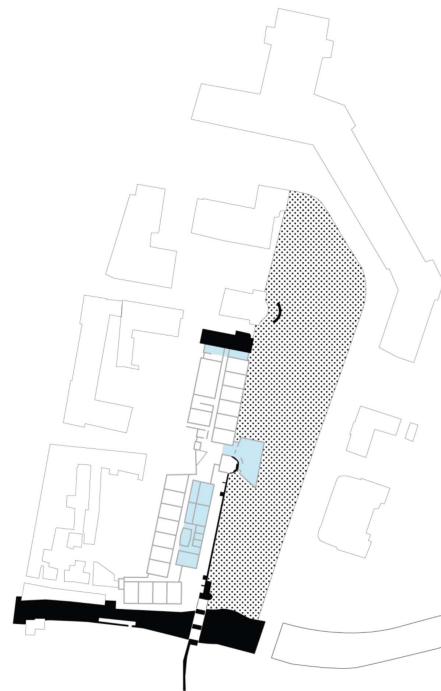
Dark and closed space

*Corridors and offices

For building level, At first, accessibility to north wing was blocked. Secondly, south facade of the chapel and original part of tower are hidden. Also, chapel, kitchen and city wall terrace are vacant. At last, the dark and closed environment of corridors give unwelcoming feeling to residents.



6 Key elements with high value



Backyard has a future opportunity to connect key elements

As a result of cultural value assessment, I selected six key elements with high value; Berkel river, Berkelpoort, citywall, tower, chapel and tower remains. Based on these key elements, I found following two statements.

Statement 1 : Blue colored space give negative impact on the key elements.

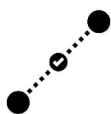
Statement 2 : Backyard has a future opportunity to connect key elements.

I have established the following design goals by compiling the results so far and actively reflected them in the design.



Heritage

Revive the value of heritage



1. Accessibility

Increase accessibility



2. Activity

Social & cultural activity



3. View & Light

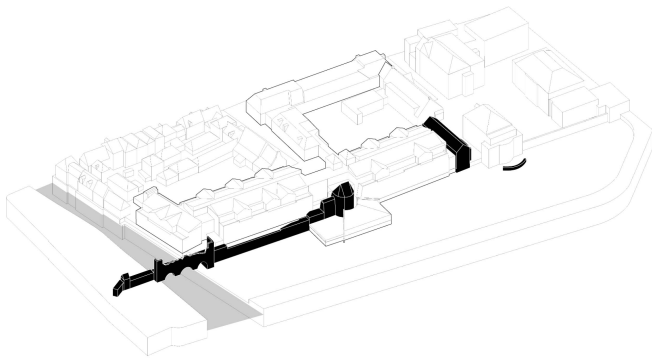
Provide active view



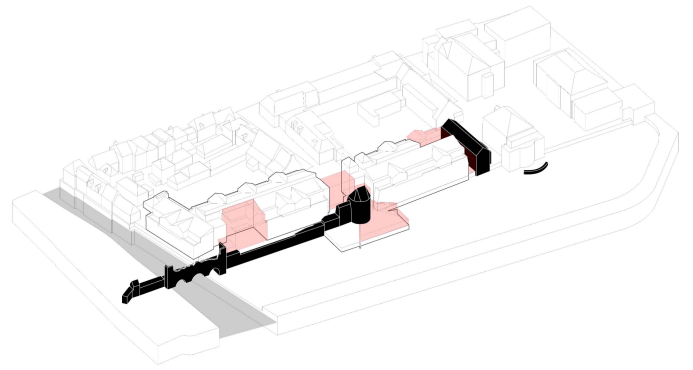
4. Privacy

Protect resident's privacy

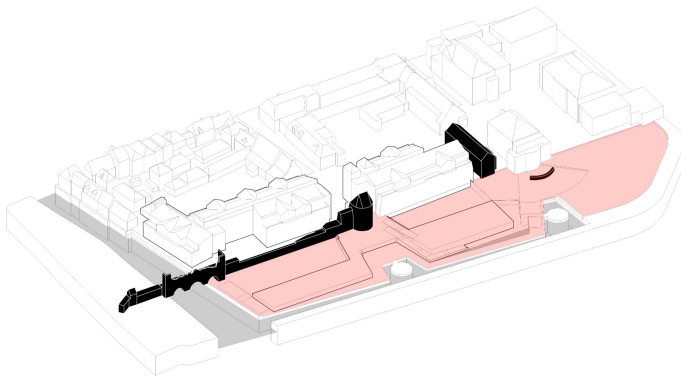
The following eight steps illustrate how design ambitions are applied to the design process.



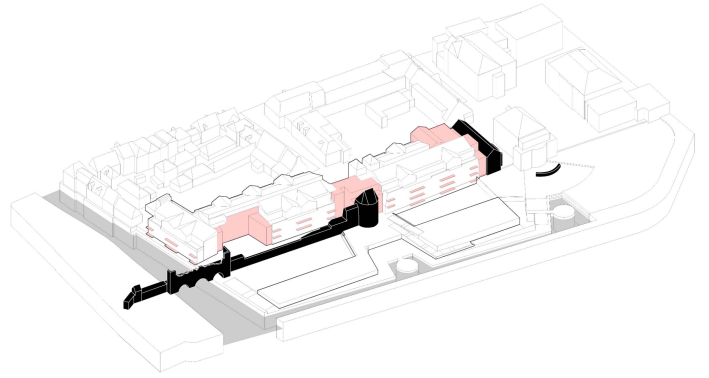
Step 1 : Key elements



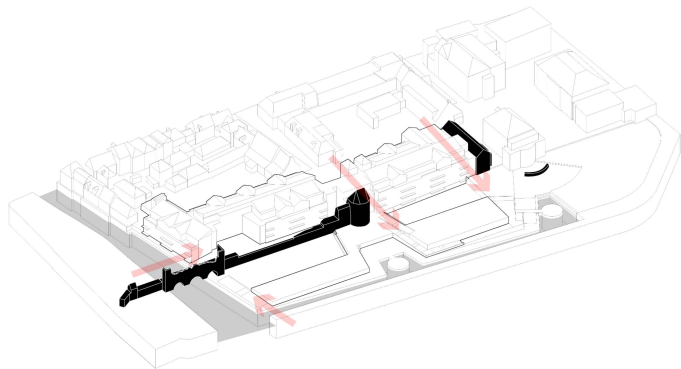
Step 2 : Partial demolish



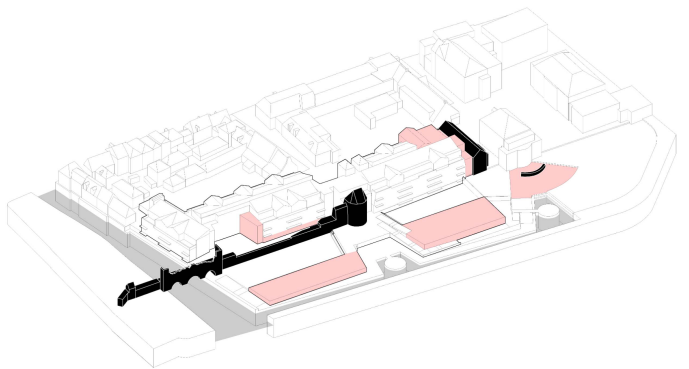
Step 3 : Garden design



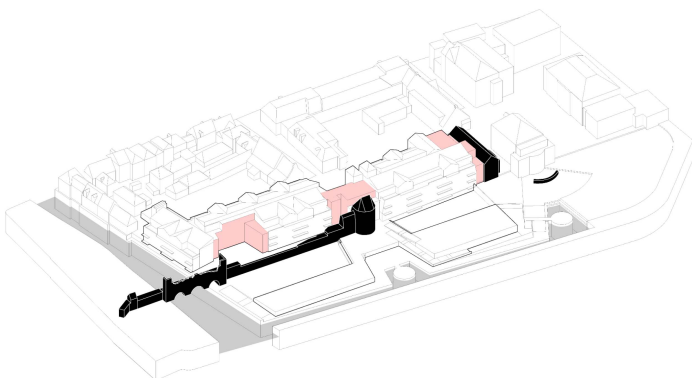
Step 4 : Elderly house renovation



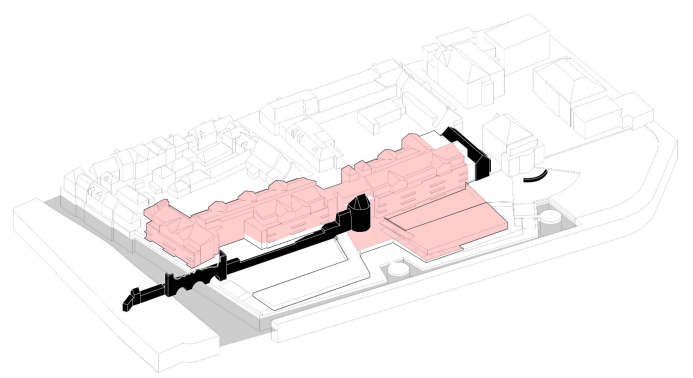
Step 5 : Accessibility



Step 6 : Activity



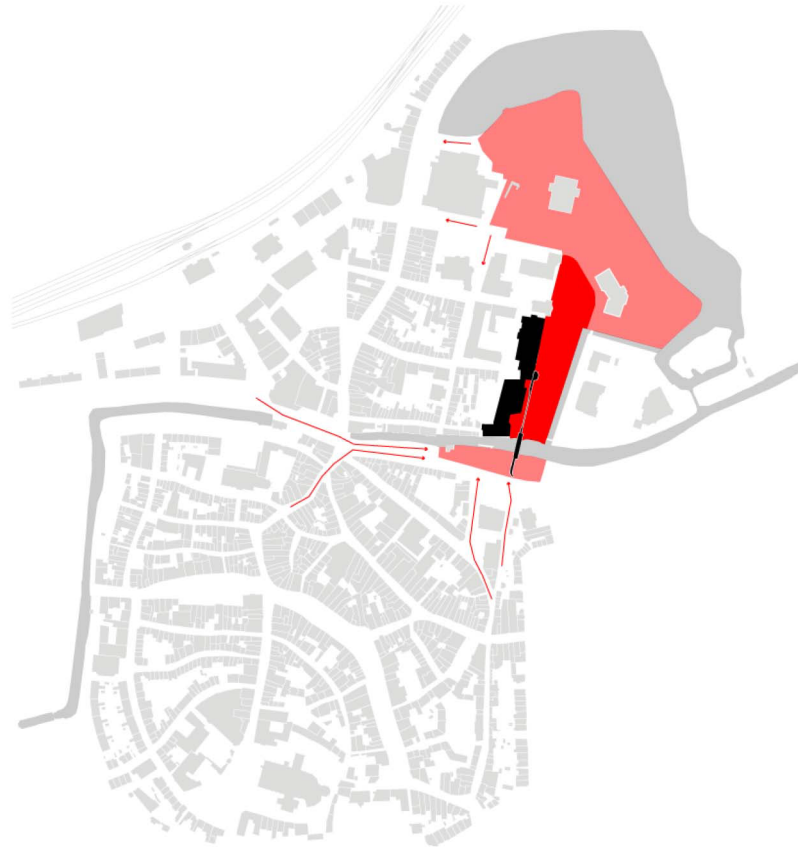
Step 7 : View & Light



Step 8 : Privacy

Aspect 2

The relationship between your graduation (project) topic, the studio topic, your master track, and your master programme.



Heritage garden

The concept of my graduation project is 'Heritage garden'. The goal of my project is to provide rich heritage space experience by sharing St. Elisabeth backyard with visitors to activate inert atmosphere of Nieuwstad. It matches with my studio topic 'Heritage studio' because heritage elements (Key elements) play important role in my project. Furthermore, I have approached my project with three different perspective which is the major design strategy of Heritage & Architecture studio : Design, Technology and Cultural value.

During the design process, I considered not only architectural aspect but also urban and social context of the site. This design attitude reflects the position of my master track and programme.

Aspect 3

Elaboration on research method and approach chosen by the student in relation to the graduation studio methodical line of inquiry, reflecting thereby upon the scientific relevance of the work.

Observation-based research and analysis

The research and analysis of St. Elisabeth complex is including the architecture analysis, cultural value analysis, and technical analysis. For more in-depth analysis, I tried to integrate each analysis rather than divide. At first, I started analysis by answering observation questions from the book 'Designing from Heritage' (Kuipers, M. & De Jonge, W., 2017). These questions hold a general framework for my analysis.

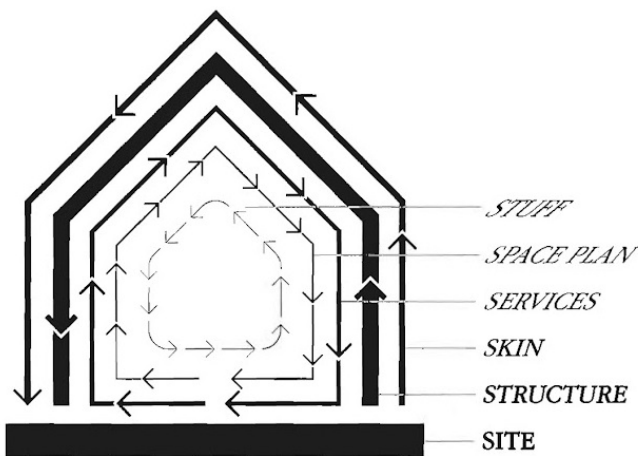
In the course of the process, I have adopted the well-known framework formulated by Steward Brand to structure my analysis of the tangible layers of the St. Elisabeth complex (Brand, 1994). Brand's framework makes the observer aware of the integral physical coherence of a building, as well as the different rates of change pre-defined layers go through.

Brand distinguishes six general-purpose layers for a building: Site, Structure, Skin, Services, Space Plan, and Stuff. However, I added three more subjects: Surrounding, Surfaces, and Spirit of place, to draw sufficient attention to them during the processes of observation and valuation. (Clarke, N., & Kuipers, M., 2017)

Value matrix & Value assessment.

For the analysis of the intangible layers, I borrowed the concept of Rieglian values and added few more values. Alois Riegl formulated a dialectic system of essential heritage values; 'Age value' versus 'Use value', 'Historical value' versus 'Newness value', 'Intentional commemorative value' versus 'Non intended commemorative value' and '(Relative) art value' etc.

The Choice for Rieglian values is deemed applicable because they are independent from those terminologies usually found in the current (inter-) national legislation and codes for heritage protection and conservation (Kuipers, M. & De Jonge, W., 2017).

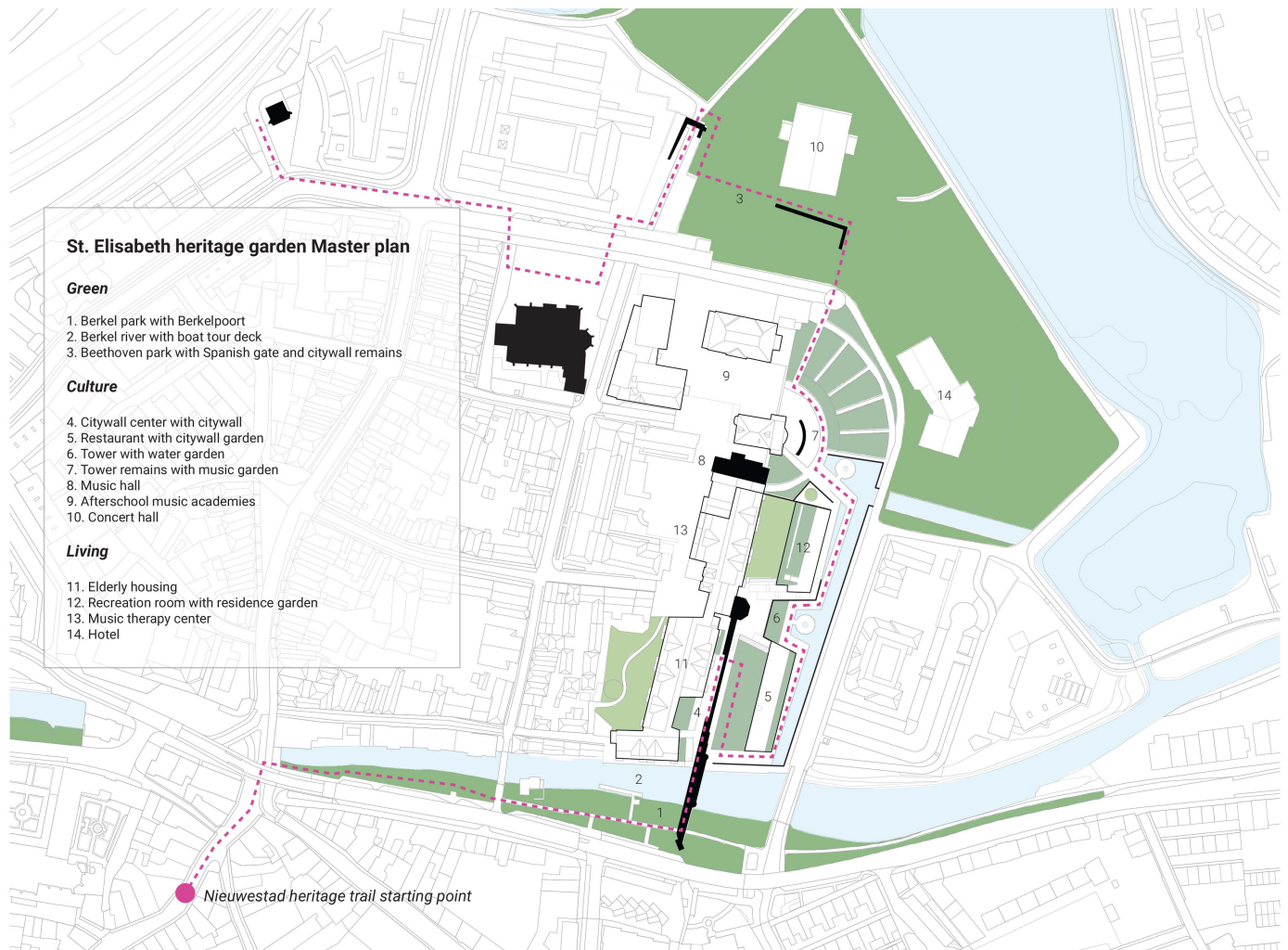


	RIEGL +	AGE value	HISTORICAL value	INTENTIONAL COMMEMORATIVE value	NON INTENDED COMMEMORATIVE value	USE value	NEW-NESS value	(relative) ART value	RARITY value [+]	OTHER relevant values [+]
BRAND +										
SURROUNDINGS / SETTING [+]										
SITE										
SKIN (exterior)										
STRUCTURE										
SPACE PLAN										
SURFACES (interior) [+]										
SERVICES										
STUFF										
SPIRIT of PLACE [+]										

Left : Steward Brands Shearing Layers Model (Brand, 1994)
 Right : Valuation matrix (Kuipers, M. & De Jonge, W., 2017)

Aspect 4

Elaboration on the relationship between the graduation project and the wider social, professional and scientific framework, touching upon the transferability of the project results.



Social and Cultural framework.

The heritage garden will contain diverse social and cultural activities, and eventually functioned as a cultural hub of Nieuwestad. Furthermore, it will activate inert local environment through the Nieuwestad heritage trail which is connecting broken urban tissues of Zutphen.

Professional and scientific framework.

The St. Elisabeth building is a postmodern building that was built in 1993. The buildings constructed in the late 20th century have an ambiguous position. They are neither historical monument nor trendy building. It's just old-fashioned building that we can frequently see around us. The Rieglian values refute this idea. What is valuable? How to measure the value of buildings? In the course of the project, I proposed a new value assessment by adding a social value to the use value. In particular, the environmental aspects were taken into account by emphasizing sustainability when considering use values. I saved energy by maximizing natural light and natural ventilation. In addition, I made maximum use of the existing structure, space, and materials. In case of demolish, I tried to recycle the disassembled material. Through this project, I wanted to deliver an important message to the modern people who ruthlessly demolish the late 20th century buildings in the name of redevelopment and regional development.

Aspect 5

Discuss the ethical issues and dilemmas you may have encountered in doing the research, elaborating the design and potential applications of the results in practice.

During the project, I encountered the following dilemmas and tried to solve them through design.

Dilemma 1 : How much I can demolish the building for the cultural value of key elements?

- Minimum demolish as much as possible with same design goals. Reuse as much as possible existing structure.

- City wall center : Instead of constructing a new building for city wall center, use the ground floor of existing building.

- Restaurant : Recycle prefabricated concrete floor slab from the demolish part of the existing building.

- Recreation room : Reuse the existing foundation

- Music hall : Reuse ground floor and first floor structure

Dilemma 2 : How can I add new function without hurting the panoramic view of backyard?

- Use the geographical level difference

- Restaurant : place restaurant on the basement level

- Recreation room : Change shape from perpendicular to linear.

- Outdoor podium : Make a stand using the terrain difference.

Dilemma 3 : Does the construction of new buildings block the view of key elements?

- City wall center : Make it apart from the city wall

- Music hall : Remove extension part of music hall

Dilemma 4 : The stained glass window of chapel has high art value but it causes thermal bridge problems.

- Attach double window on the external façade of the chapel