

Determination of soil permeability coefficient following an updated grading entropy method

O'Kelly, Brendan C.; Nogal Macho, Maria

DOI

[10.1680/jgere.19.00036](https://doi.org/10.1680/jgere.19.00036)

Publication date

2020

Document Version

Final published version

Published in

Geotechnical Research

Citation (APA)

O'Kelly, B. C., & Nogal Macho, M. (2020). Determination of soil permeability coefficient following an updated grading entropy method. *Geotechnical Research*, 7(1), 58-70. <https://doi.org/10.1680/jgere.19.00036>

Important note

To cite this publication, please use the final published version (if applicable).
Please check the document version above.

Copyright

Other than for strictly personal use, it is not permitted to download, forward or distribute the text or part of it, without the consent of the author(s) and/or copyright holder(s), unless the work is under an open content license such as Creative Commons.

Takedown policy

Please contact us and provide details if you believe this document breaches copyrights.
We will remove access to the work immediately and investigate your claim.

Determination of soil permeability coefficient following an updated grading entropy method

Brendan C. O'Kelly MEngSc, PhD, FTCD, CEng, CEnv, MICE
Associate Professor, Department of Civil, Structural and Environmental
Engineering, Trinity College Dublin, Dublin, Ireland (corresponding author:
bokelly@tcd.ie) (Orcid:0000-0002-1343-4428)

María Nogal MSc, MRes, PhD
Assistant Professor, Department of Materials, Mechanics, Management and
Design, Faculty of Civil Engineering and Geosciences, Delft University of
Technology, Delft, the Netherlands (Orcid:0000-0001-5405-0626)

This paper presents a critical review of the grading entropy approach of permeability-coefficient predictions (k_p) for coarse-grained soils. The approach applies the grading entropy theory to particle-size distributions (PSDs), such that the entirety of each gradation curve can be interpreted as a single point on a grading entropy chart, plotting its normalised entropy increment (B) against relative base grading entropy (A) values. Published data sets of measured permeability-coefficient (k_M) values for saturated compacted silty sand, sand and gravel materials are examined to understand the dependence of A and B on various gradation parameters and the void ratio (e). In particular, $\log k_M$ negatively correlates with $\log B$ and positively correlates with $\log A$ and e ($\log e$). As such, power functions of the form $k_p = C_1 A^{C_2} B^{C_3} e^{C_4}$ prove statistically superior, noting that the fitting coefficient C_1 to C_4 values are specific to the PSD range and densification (compaction) states investigated for the permeability tests. Recommendations are given for increasing the predictive power, including separate models for well-graded and poorly graded materials and the addition of a particle shape factor and specific surface parameters in the regression correlation.

Notation

A	relative base grading entropy
B	normalised entropy increment
C_1 to C_4	fitting coefficients for regression models (C_1 (m/s); C_2 to C_4 , dimensionless)
C_C	coefficient of curvature
C_U	coefficient of uniformity
D_{10}	effective grain size (mm)
D_{30} , D_{50} , D_{60}	particle sizes corresponding to 30, 50 and 60% dry mass passing, respectively (mm)
e	void ratio
$e_{\text{compacted}}$	void ratio of compacted specimens
G_C	characteristic gradation parameter (mm)
k	coefficient of permeability (m/s)
k_M	measured permeability coefficient (m/s)
k_p	predicted permeability coefficient (m/s)
m	number of sample subdivisions (fractions)
n	number of data points (observations)
p	p -value of statistical hypothesis testing
R^2	coefficient of determination
R_a^2	adjusted coefficient of determination
x_i	relative frequency of fraction i

Introduction

The topic of accurate prediction of soil permeability is of importance to geotechnical engineers and researchers. The coefficient of permeability (k), defined as the mean discharge velocity of the fluid flow through a porous medium for a unit hydraulic gradient, is principally dependent on the size and connectivity of the pore voids, which are related to the size distribution and shape of the solid particles, the degree of

saturation, soil structure and the pore fluid's viscosity. As customary, reported laboratory k values typically correspond to the soil in its saturated state and for a standardised permeant temperature of 20°C since fluid viscosity is temperature dependent.

Direct measurement using well pumping, borehole slug and tracer tests and laboratory constant- and falling-head permeameter approaches typically involve relatively high economic cost, are time-consuming and require specialised facilities and expertise (O'Kelly, 2008, 2009, 2016), such that they are often not considered viable options for many projects. The same often applies for indirect measurement approaches, including the calculation of laboratory k values from consolidation parameters determined from oedometer, consolidometer and hydraulic consolidation testing (O'Kelly, 2005, 2006).

At the feasibility stage of large projects or for the design of drainage, soak wells, septic tanks and so on, geotechnical engineers are often needed to provide estimated (mainly for budget constraints) soil permeability. Such assessments are often made by way of empirical index-property-based formulae – for example, considering soil gradation, volumetric characteristics, bulk density, clay content and organic content. Dozens of empirical correlations (models) have been proposed over the decades in order to correlate the k value of a soil sample with some representative particle size from its gradation curve, usually taken as the effective grain size (D_{10}) or mean particle size (D_{50}) index values – that is, the particle sizes corresponding to 10 and 50% dry mass passing, respectively. The void ratio (e) is long recognised as a primary predictor of soil permeability-coefficient values and is included in many empirical and semi-empirical models (e.g. Carman, 1937, 1939; Carrier, 2003; Chapuis, 2004, 2012;

Chapuis and Aubertin, 2003; Kozeny, 1927). Some of the most popular correlations, which are primarily based on some representative particle size(s), gradation parameter, void ratio and/or specific surface of the solids, are presented in the papers by Arshad *et al.* (2019) and Chapuis (2012), along with their intended applications in terms of soil types, gradation ranges and density states.

Recently, approaches based on the grading entropy framework (attributed to Lörincz's doctoral thesis (Lörincz, 1986; Lörincz *et al.*, 2017; Singh, 2014)) and the characteristic gradation parameter (Arshad *et al.*, 2019) have been proposed for permeability assessments of coarse-grained soils. The primary focus of the present investigation is on the grading entropy approach. The characteristic gradation parameter G_C (Equation 1) approach is mentioned at this stage for completeness and has been employed in the model given by Equation 2 for predictions of the saturated permeability-coefficient (k_p) value for sand and silty sands.

$$1. \quad G_C = 0.3D_{10} + 0.2D_{30} + 0.3D_{50} + 0.2D_{60}$$

where D_{10} , D_{30} , D_{50} and D_{60} are the particle sizes, given in millimetres, for 10, 30, 50 and 60% dry mass of material passing, respectively.

$$2. \quad k_p(\text{m/s}) = \left(e\sqrt{G_C}\right)^{6.7} \quad (\text{Arshad et al., 2019})$$

Literature review

The grading entropy approach applies entropy theory (Shannon, 1948) to the particle-size distribution (PSD) of a granular mixture, thereby establishing a vectorial depiction of gradation variation (McDougall *et al.*, 2013) arising from an ongoing change in the PSD (because of grain crushing or soil erosion) or for materials with different PSDs – that is, each grading curve can be interpreted and plotted as a discrete point in the grading entropy chart, whose coordinates A (relative base grading entropy) and B (normalised entropy increment) are computed according to the following equations

$$3. \quad A = \frac{\sum_{i=1}^m x_i(i-1)}{m-1}$$

$$4. \quad B = -\frac{\sum_{i=1}^m x_i \log_2 x_i}{\log_e m}$$

where m is the number of fractions (sample subdivisions) and x_i is the relative frequency of fraction i .

Imre *et al.* (2012) explained that the variation in fraction number m for soils with different PSDs can induce a discontinuity in the

normalised entropy path. As described by Feng *et al.* (2019a), in order to remove this discontinuity, 'zero' fractions (i.e. coarser or finer fractions with zero particle frequency), which leave the non-normalised grading entropy unaffected, are introduced in the analysis (see the paper by Imre *et al.* (2012)). Based on the normalised grading entropy equations, for a certain fraction number m , the maximum normalised entropy increment (B) curve is fixed (see the calculation process in the book by Singh (2014)); however, with different fraction numbers m , the variation of the maximum B curve is rather unnoticeable (cf. the paper by Imre *et al.* (2008)).

As demonstrated in Figure 1, variations in different materials' gradations can be conveniently recorded using this approach in terms of discrete points presented in the one chart, rather than their usual presentation as a family of PSD curves. As explained in the paper by McDougall *et al.* (2013) and also evident from examination of the various PSD plots presented in this figure, the coordinate A reflects the skewness (symmetry) of a PSD curve, while the coordinate B measures its peakiness (kurtosis). For instance, with coordinate A decreasing from unity to 0.5 and increasing values of coordinate B , the proportion of smaller-sized particles in the soil mass increases, which is associated with lower k_M values.

A perceived advantage of the grading entropy permeability-prediction models is that through the coordinates A and B , they account for the entire soil gradation, rather than considering some representative particle size (e.g. D_{10} or D_{50} value) of the grading curve, as employed in many of the other empirical index-property-based formulae. The model given by Equation 2 also has this advantage since the philosophy of the characteristic gradation parameter G_C is to embody the entirety of the soil gradation curve.

Recent studies by Feng *et al.* (2018a, 2018b, 2019a) on various gravel mixtures and Arshad *et al.* (2019) on various sands and silty sands investigated the grading entropy coordinates A and B for predictions of the k_p value. The premise of the studies by Feng *et al.* (2018a, 2018b, 2019a) was that pavement engineers often specify gradation curve envelopes when designing gravel mixtures, such that a method of estimating the permeability-coefficient value straight from the gradation curve is useful. Specifically, they performed multiple linear regression analyses, producing Equations 5–7 from data sets of measured permeability coefficient (k_M) for asphalt concrete (Feng *et al.*, 2018a), various saturated 10 mm crushed basalt-gritstone gravel mixtures (Feng *et al.*, 2019a) and a database of 164 hydraulic conductivity tests for various sands and gravels compiled from ten earlier publications summarised in the paper by Feng *et al.* (2018b).

$$k_p(\text{m/s}) = 8.4 \times 10^{-4} A^{11.71} B^{-2.73}$$

$$(R^2 = 0.20, p < 0.001, n = 1578)$$

$$5. \quad (\text{Feng et al., 2018a})$$

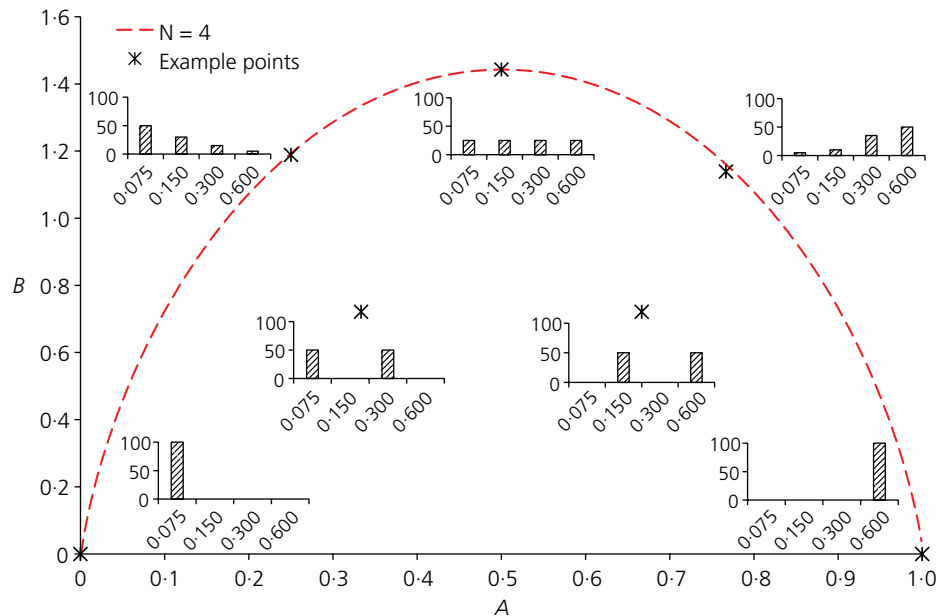


Figure 1. Effect of gradation changes on the grading entropy coordinates A and B (from the paper by Feng *et al.* (2019a) and originally based on the paper by McDougall *et al.* (2013))

$$k_p(\text{m/s}) = 1.4547 \times 10^{-1} A^{8.90} B^{-2.30}$$

$$(R^2 = 0.90, p < 0.0001, n = 30)$$

6. (Feng *et al.*, 2019a)

$$k_p(\text{m/s}) = 4.704 \times 10^{-2} A^{6.04} B^{-0.34}$$

$$(R^2 = 0.69, p < 0.0001, n = 164)$$

7. (Feng *et al.*, 2018b)

where n is the number of data points (observations); p refers to the p -value of the statistical hypothesis testing; and R^2 is the coefficient of determination.

As per Equations 5–7, Feng *et al.* (2018a, 2018b, 2019a) found that compared with other possible formulations, power functions of the form $k_p = C_1 A^{C_2} B^{C_3}$ are statistically superior; where C_1 , C_2 and C_3 are the fitting coefficients. Note that C_1 is expressed in the same units as k_p , whereas C_2 and C_3 are dimensionless. This avoids the mathematical and physical inconsistencies discussed by Castillo *et al.* (2014a, 2014b).

The study presented by Arshad *et al.* (2019) employed essentially the same approach, investigating saturated standard Proctor (SP)-compacted sand and silty sand samples. Based on their published data, the authors derived the following equation as part of the present investigation

$$k_p(\text{m/s}) = 7.52 \times 10^{-4} A^{4.66} B^{-3.88}$$

8. ($R^2 = 0.29, p = 0.09, n = 17$)

As described earlier, the k_M value is principally controlled by the size and connectivity of the pore voids, which are dependent on the shape and size distribution of the constituent solids, whether well graded or poorly graded, the void ratio and the soil structure. As such, models of the form given by Equations 5–8 have potential shortcomings, most notably since they do not account for the soil densification level (packing state) or particle shape – that is, although dependent on gradation (and hence coordinates A and B) and to a lesser extent on the particle shape, the placement void ratio is also strongly dependent on the densification level (packing state). For a given soil material, an equation of the form $k_p = C_1 A^{C_2} B^{C_3}$ produces the same k_p value for loose, medium and dense packing states and for particle shape classes as diverse as irregular to rounded, which are clearly not the cases. As such, relationships of the form $k_p = f_n(A, B, e)$ should prove statistically superior and extend the model's scope and reliability (Feng *et al.*, 2019b). This is analogous to the approach employed for Equation 2, where the G_C and e parameters account for gradation characteristics and packing state, respectively. The packing state is controlled to some degree by the particle shape, such that the controlling effect of the latter on the permeability-coefficient magnitude is partially accounted for by the inclusion of the e parameter in the model.

Further, from inspection of Equations 6–8 for sand and gravel materials, the values of the coefficients C_1 to C_3 are significantly

different between equations. Feng *et al.* (2018b) explained that this may be due to the diversity of gradation ranges and mineralogical compositions of the various sand and gravel materials considered in their study, compared with the 10 mm basalt-gritstone gravel mixtures investigated in another paper by the same authors (Feng *et al.*, 2019a), which is undoubtedly the case. In other words, the fitting-coefficient values in Equations 5–8 pertain to the particle shape and the gradation and densification (compaction) ranges of the materials investigated for the permeability tests, consistent with the fact that the different samples (data sets) considered in the papers by Feng *et al.* (2018a, 2018b, 2019a) and Arshad *et al.* (2019) did not represent the same statistical population – that is, like any empirical correlation, Equations 5–8 cannot be applied with confidence for materials having different physical characteristics, prepared at other densification levels and (or) outside their calibration gradation ranges.

As evident from Figure 2, compared with the gravel and sand materials for Equations 6 and 7, the power function given by Equation 8 for the sand and silty sand materials predicts substantially lower k_p values. In this figure, the domain for each presented model is based on its reported range of k_M or coordinate A and B values, as

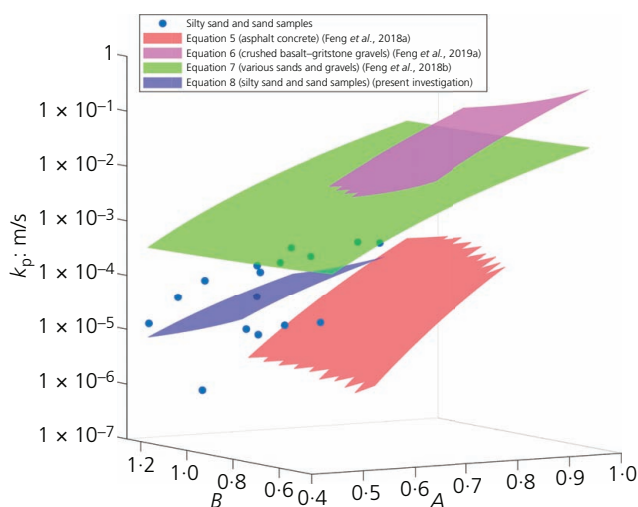


Figure 2. Comparison of various grading entropy permeability-prediction models. Note that the green three-dimensional domain (Equation 7) does not cover the entire calculated k_p range, because the represented ranges of A and B do not produce such a wide range of k_p values

listed in Table 1. The spatial trend given by these three models over their calibration permeability-coefficient ranges is consistent with the expected reduction in k values for reducing particle size from gravel to sand to silty sand materials. On this basis, it would appear a step too far for a single regression correlation of the form $k_p = C_1 A^{C_2} B^{C_3}$ to give a satisfactory assessment of k values for a broad spectrum of coarse- and (or) fine-grained soils. This is undoubtedly the case when different densification levels are considered.

The present investigation provides in-depth evaluation of the grading entropy approach for permeability-coefficient assessments. To this aim, two previously published data sets are combined and analysed – namely, for 30 saturated compacted basalt-gritstone gravel mixtures ($k_M = 4.2 \times 10^{-3}$ to 5.6×10^{-1} m/s) presented in the paper by Feng *et al.* (2019a) and for 20 saturated SP-compacted fine and coarse silica sand and silty sand samples ($k_M = 7.2 \times 10^{-7}$ to 5.6×10^{-4} m/s) presented in the paper by Arshad *et al.* (2019). Hereafter, these sources are referred to as data sets X and Y, respectively. From a review of the pertinent literature, these two papers are presently the only ones that report values of the coordinates A and B along with pertinent gradation parameter, void ratio and measured permeability-coefficient values (determined from standard laboratory constant-head permeameter testing) for the investigated soils.

In particular, the dependence of the grading entropy coordinates A and B on the coefficient of uniformity (C_U), coefficient of curvature (C_C), D_{10} , D_{50} and compacted void ratio ($e_{\text{compacted}}$) is closely examined. From a practical application point of view, relative density is usually estimated for subsurface soil strata by various means of field tests (i.e. cone penetration test, standard penetration test etc.) and also compaction specifications for earthwork verification are generally defined by a dry density ratio of 95 or 98% of maximum dry density (modified compactive effort). Neither of the data sets X and Y reported the maximum and minimum void ratio values for the various materials examined – that is, only $e_{\text{compacted}}$ values were given, such that it was not possible to perform analysis and evaluations based on the relative density and (or) at a particular dry density ratio, which would have been preferable.

None of the previous grading entropy investigations has explicitly considered the importance of soil gradation in terms of whether the materials were well graded or poorly graded and its impact on deduced correlations. Presumably, it was assumed that this aspect was incorporated in the coordinates A and B values. However, it is the

Table 1. Calibration ranges in terms of the measured permeability coefficient or coordinates A and B for various grading entropy permeability-prediction models

Equation (model)	A	B	k_M : m/s	Reference
Equation 5	Not reported	Not reported	2.0×10^{-6} to 3.8×10^{-4}	Feng <i>et al.</i> (2018a)
Equation 6	0.64–0.94	0.46–1.01	4.2×10^{-3} to 5.6×10^{-1a}	Feng <i>et al.</i> (2019a)
Equation 7	Not reported	Not reported	1.0×10^{-6} to 6.0×10^{-1b}	Feng <i>et al.</i> (2018b)
Equation 8	0.44–0.72	0.85–1.26	7.2×10^{-7} to 5.6×10^{-4c}	Arshad <i>et al.</i> (2019)

^a Data set X in the present investigation

^b Computed from the measured intrinsic permeability range reported by Feng *et al.* (2018b)

^c Data set Y in present investigation

authors' opinion that correlations with greater statistical significance would be obtained for considering well-graded and poorly graded materials as separate groupings. This aspect is investigated for each of the parameters C_U , C_C , D_{10} , D_{50} and $e_{\text{compacted}}$.

Based on new insights gleaned from the detailed analysis of the combined X and Y data sets, improved grading entropy soil permeability-prediction models are proposed and evaluated. Further, whereas the studies reported in the papers by Feng *et al.* (2018a, 2018b, 2019a) considered sand and gravel materials as well as asphalt concrete, one of the novelties of this paper is the extension of the grading entropy approach for permeability assessments of silty sand materials.

Analysis and discussion of published data

Grading entropy coordinates

The widely different gradations of 30 gravel mixtures ($D_{10} = 0.72\text{--}7.02\text{ mm}$ and $D_{50} = 2.17\text{--}9.93\text{ mm}$) and 17 sandy soil samples ($D_{10} = 0.01\text{--}0.42\text{ mm}$ and $D_{50} = 0.02\text{--}0.56\text{ mm}$) comprising data sets X and Y, respectively, are shown using the grading entropy chart in Figure 3. Note that from the authors' preliminary analysis of the $n = 20$ data entries comprising data set Y, unresolvable inconsistencies were found for the data entries corresponding to the three soil samples listed as A, B and $A_{50} + C_{50}$ in the paper by Arshad *et al.* (2019). For this reason, the authors considered it prudent to omit these three soils from statistical analysis reported in the present investigation.

The A coordinate values for all investigated soils ranged from 0.44 to 0.94 – that is, the grading entropy coordinate pairs fall approximately within the right-hand half of the semi-elliptical domain identified in

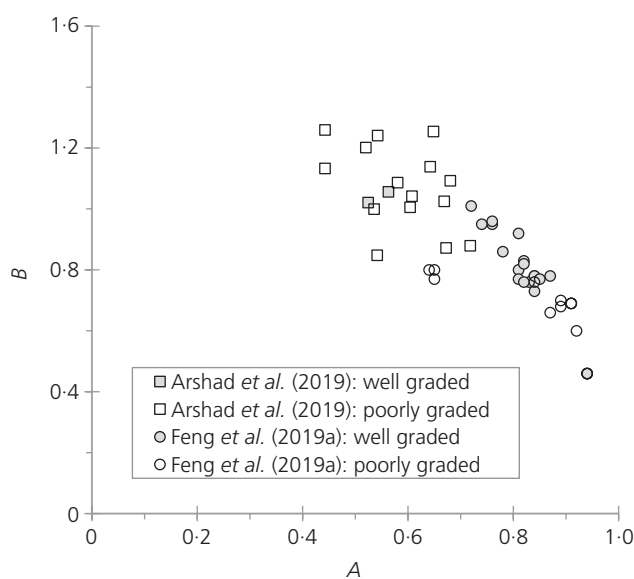


Figure 3. Variation in gradation, as expressed in terms of normalised entropy increment against relative base grading entropy for the investigated soils

Figure 1. In presenting the data points in Figure 3, the authors have distinguished between well-graded and poorly graded materials to allow for a more critical assessment of the data sets – that is, for gravel soils with $C_C = 1\text{--}3$, $C_U \geq 4 \rightarrow$ well graded and $C_U < 4 \rightarrow$ poorly graded (ASTM, 2017), whereas $C_C \neq 1\text{--}3 \rightarrow$ gap-graded soils. For sand soils, $C_U \geq 6$ and < 6 with $C_C = 1\text{--}3 \rightarrow$ well graded and poorly graded, respectively, whereas $C_C \neq 1\text{--}3 \rightarrow$ gap graded (ASTM, 2017).

As evident from Figure 3 and noted previously by Feng *et al.* (2019b), the gradation characteristics of the gravel mixtures comprising data set X were such that their B values negatively correlate with A ($R^2 = 0.50$), whereas only a weak correlation ($R^2 = 0.16$) occurs for data set Y – that is, the soil materials comprising data set X were mostly well graded, whereas those comprising data set Y were predominantly poorly graded.

Correlations with C_U and C_C

The C_U and C_C values for the sandy soil samples (data set Y) ranged 1.60–12.50 and 0.73–5.12, respectively, with $C_U = 1.51\text{--}7.29$ and $C_C = 0.62\text{--}3.5$ for the gravel mixtures (data set X). Feng *et al.* (2019a) reported that for data set X, C_U inversely correlated with coordinate A and directly correlated with coordinate B . As evident from Figure 4, however, these trends are not obvious when considering the combined data sets X and Y.

For data set X, 18 out of the 30 gravel mixtures investigated classify as well graded ($C_U \geq 4$), compared with only two of the 17 sandy soil samples ($C_U \geq 6$) comprising data set Y. It would appear that the above trends deduced by Feng *et al.* (2019a) for data set X arose on account of the data points associated with its 18 well-graded gravels. As evident from Figures 4(c) and 4(d), the 20 well-graded soils for the combined data sets X and Y exhibit reasonably strong correlations between C_U and the coordinates A and B ($R^2 \approx 0.64$), whereas C_U was independent of coordinates A and B for the 27 poorly graded sand and gravel materials.

In relation to C_C , Feng *et al.* (2019a) observed that for data set X, higher values of C_C peaked around $A = 0.82$ and $B = 0.78$, which is generally evident for the combined data sets X and Y presented in Figure 5. This was also the case when the well-graded and poorly graded subsets of the combined data sets were investigated. It is concluded, however, that apart from C_U for the well-graded soils, neither C_U nor C_C is a candidate for useful correlations with the coordinates A and (or) B .

Correlations with D_{10} and D_{50}

Data sets X and Y reported D_{10} and D_{50} values for the investigated materials ($n = 47$), but only data set Y also reports D_{30} and D_{60} . Considering the small sample size for the latter parameters ($n = 17$), only the dependences of D_{10} and D_{50} on the coordinates A and B are investigated in the present study. For the $D_{10}\text{--}A$, $D_{10}\text{--}B$, $D_{50}\text{--}A$ and $D_{50}\text{--}B$ relationships, exponential fitting of the combined data sets (Equations 9–14) was found to produce marginally higher R^2 values compared with other forms of their relationships – that is,

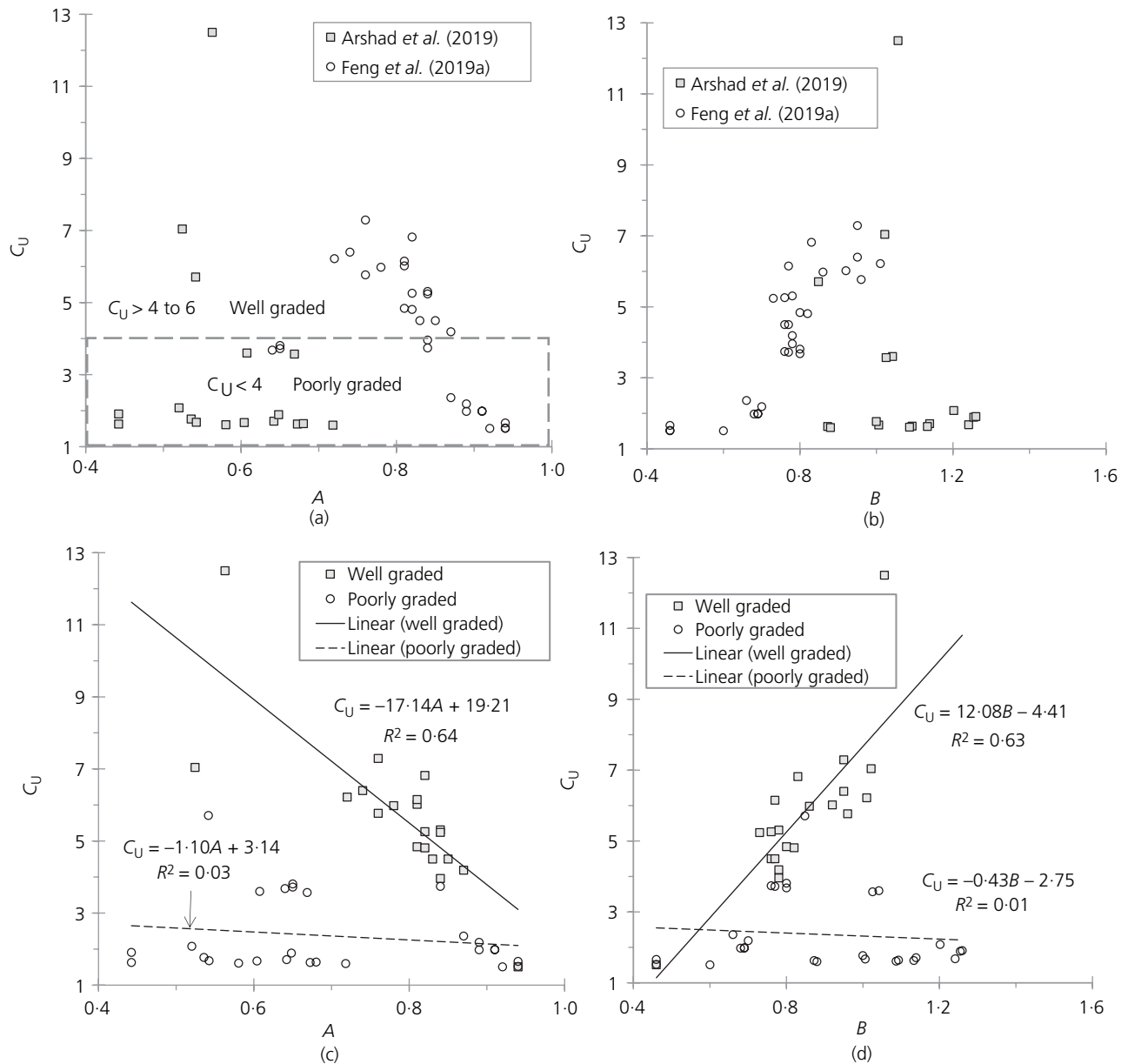


Figure 4. Dependence on the uniformity coefficient: (a) coordinate A ; (b) coordinate B ; (c) considering gradation classification and coordinate A ; (d) considering gradation classification and coordinate B

$\log D_{10}$ and $\log D_{50}$ both positively correlate with coordinate A and negatively correlate with coordinate B for these soils (Figure 6). Further, referring to Figures 6(a)–6(d), both $\log D_{10}$ and $\log D_{50}$ correlate more closely with coordinate A ($R^2 = 0.83$ for both) than coordinate B ($R^2 = 0.71$ and 0.67 , respectively).

$$D_{10}(\text{mm}) = 2.58 \times 10^{-4} e^{10.67A}$$

9. ($R^2 = 0.83$, $n = 47$)

$$D_{10}(\text{mm}) = 2.92 \times 10^2 e^{-6.98B}$$

10. ($R^2 = 0.71$, $n = 47$)

$$D_{50}(\text{mm}) = 5.07 \times 10^{-4} e^{11.14A}$$

11. ($R^2 = 0.83$, $n = 47$)

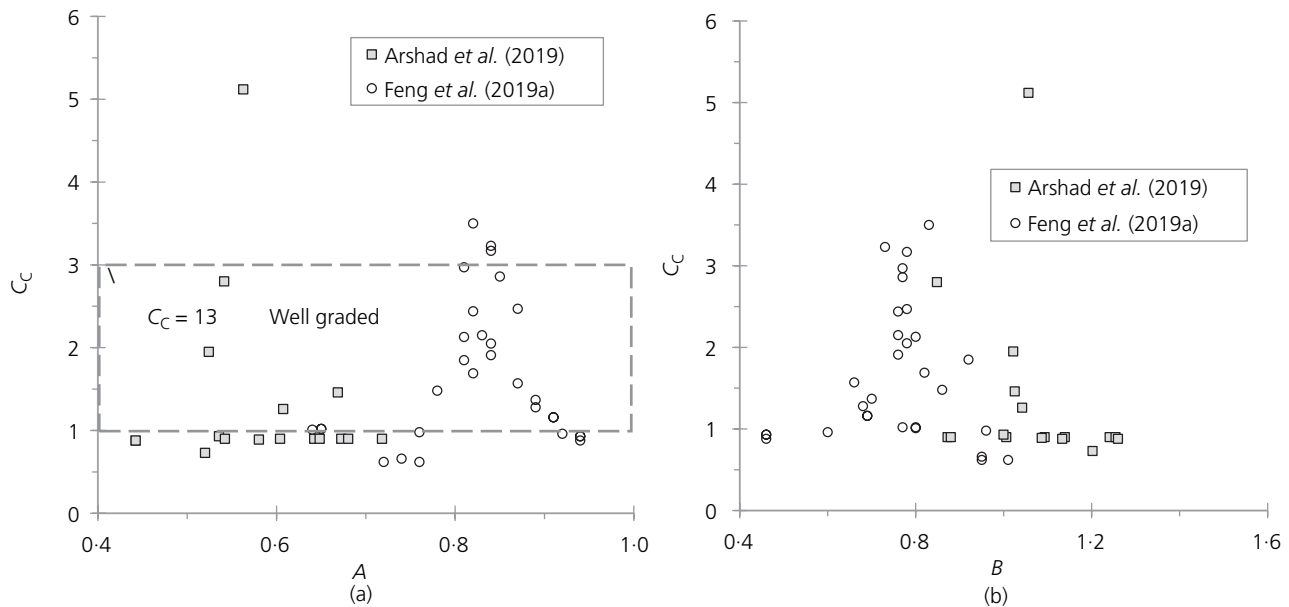


Figure 5. Dependence on the curvature coefficient: (a) coordinate A ; (b) coordinate B

$$D_{50} \text{ (mm)} = 9.03 \times 10^2 e^{-7.10B}$$

$$12. \quad (R^2 = 0.67, n = 47)$$

Referring to Figures 6(e) and 6(f), the 20 well-graded soils for the combined data sets X and Y exhibit a very strong correlation between $\log D_{10}$ and the coordinate A (Equation 13: $R^2 = 0.94$), compared with the moderately strong correlation obtained for the 27 poorly graded soils. Further, compared with the well-graded soils (Equation 14), the correlation between $\log D_{10}$ and coordinate B was stronger for the poorly graded soils, possibly reflecting its measure of peakiness (kurtosis) of the PSD.

$$D_{10} \text{ (mm)} = 2.45 \times 10^{-5} e^{13.43A}$$

$$13. \quad (R^2 = 0.94, n = 20: \text{well-graded soils})$$

$$D_{10} \text{ (mm)} = 5.07 \times 10^2 e^{-7.48B}$$

$$14. \quad (R^2 = 0.57, n = 20: \text{well-graded soils})$$

On first viewing of Figures 6(a)–6(f), there appears to be significant scatter in the data points for $D_{10} < \sim 1$ mm, but this follows directly from the logarithmic scale employed for the y -axis which always makes the points below 1.0 more dispersed (in the vertical axis), whereas it makes the points above 1.0 more concentrated (in the vertical axis). What is interesting is that the type of curve obtained will predict in a more accurate manner for

small values of D_{10} (D_{50}), increasing the prediction interval with larger D_{10} (D_{50}). In the case of D_{10} (D_{50})– A , this will occur for smaller values of coordinate A (0.4–0.7), whereas in the case of D_{10} (D_{50})– B , it will happen for large values of coordinate B (0.8–1.4) – that is, in the case of the data that the authors have and referring to the ranges of coordinates A and B for the two data sets shown in Figure 3, the exponential D_{10} (D_{50})– A and D_{10} (D_{50})– B models will provide more accurate prediction for data set Y (sand and silty sand materials) compared with data set X (gravels).

Correlations with permeability coefficient

Figure 7 presents the measured permeability-coefficient (k_M) values plotted against the coordinate A and B values for the combined data sets X and Y. As evident from this figure, $\log k_M$ directly correlates with $\log A$ and inversely correlates with $\log B$. The k_P – A and k_P – B models for the combined data sets are presented as the following equations

$$k_P \text{ (m/s)} = 7.84 \times 10^{-1} A^{16.29}$$

$$15. \quad (R^2 = 0.83, n = 47)$$

$$k_P \text{ (m/s)} = 4.96 \times 10^{-4} B^{-12.44}$$

$$16. \quad (R^2 = 0.68, n = 47)$$

From Figure 7, it could again be construed that considerably greater scatter in the data points occurs for data set Y (17 sandy soils), although this also arises from the representation, as explained earlier for Figures 6(a)–6(f). Note that here, as the scale is log–log, the

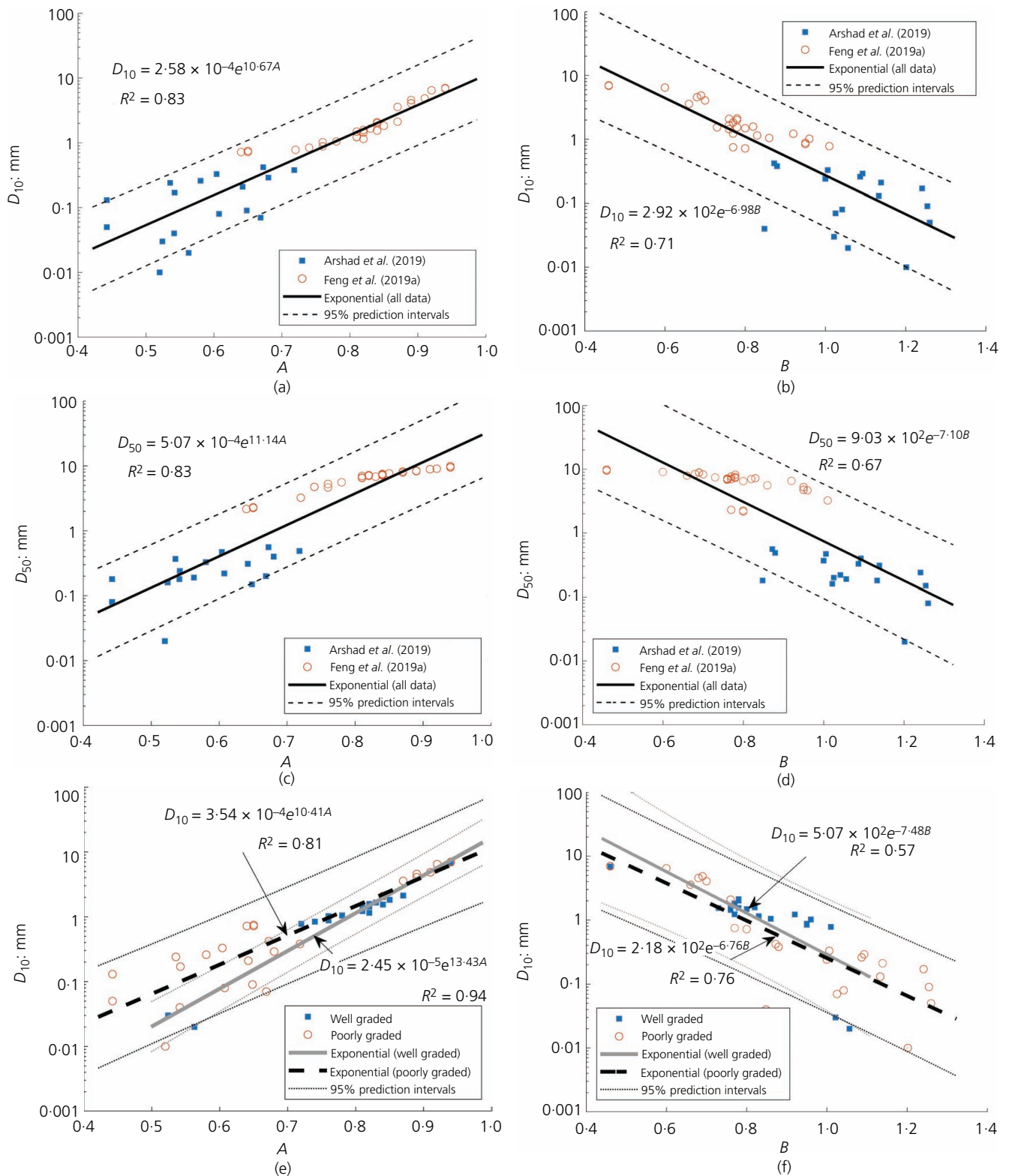


Figure 6. Dependence of grading entropy coordinates on (a, b) effective grain size, D_{10} ; (c, d) mean grain size, D_{50} ; and (e, f) D_{10} and soil gradation classification of well-graded and poorly graded

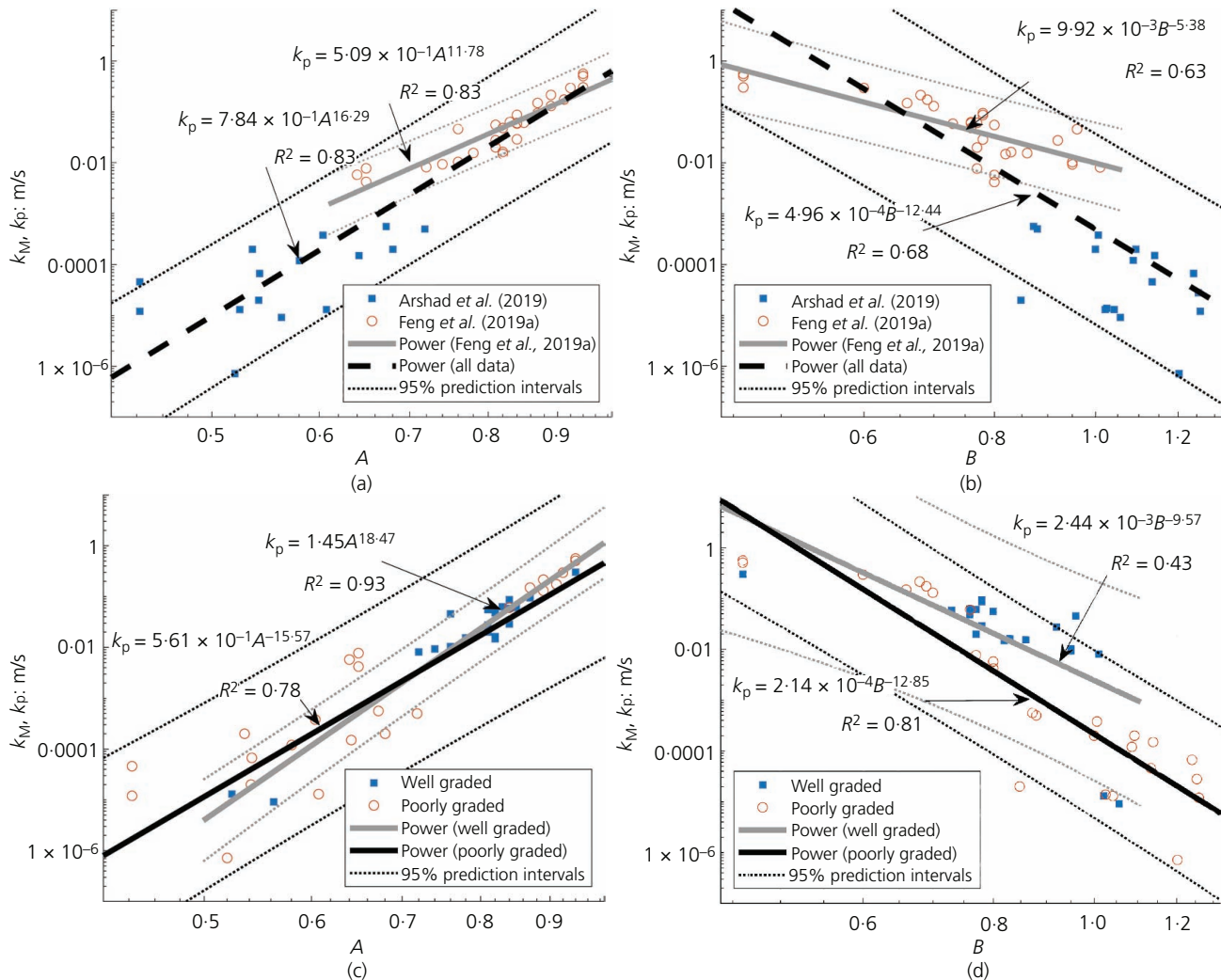


Figure 7. Dependence of k_M (k_p) on grading entropy coordinates: (a) A ; (b) B ; (c) A with consideration of gradation classification; (d) B with consideration of gradation classification. Note: logarithmic scale used for x-axes

effect applies to both x - and y -axes. Given the range of definition of coordinates A and B , the dispersion effect is not so obvious in the x -axis. Similar to the D_{10} (D_{50}) against A and B correlations small values of k will be predicted with more precision. In the case of A - k , this will happen for smaller values of coordinate A . In the case of B - k , this will happen for larger values of coordinate B – that is, again, data set Y (sand and silty sand materials) will be better predicted than data set X by this type of power equation.

Based on the regression results for the combined data sets (Figures 7(a) and 7(b)), compared with $\log B$ ($R^2 = 0.68$), $\log A$ correlates more closely with $\log k_M$ (0.83). However, when the well-graded and poorly graded subsets were analysed separately (Figures 7(c) and 7(d)), the strongest correlations were found for well-graded soils between $\log k_M$ and $\log A$ and for poorly graded soils between $\log k_M$ and $\log B$ (see Equations 17 and 18, respectively). Again, this follows from the fact that coordinate A

reflects the skewness (symmetry) of the PSD, whereas coordinate B measures the peakiness (kurtosis) of the distribution.

$$k_p(\text{m/s}) = 1.45A^{18.47}$$

$$17. \quad (R^2 = 0.93, n = 20: \text{well-graded soils})$$

$$k_p(\text{m/s}) = 2.14 \times 10^{-4}B^{-12.85}$$

$$18. \quad (R^2 = 0.81, n = 27: \text{poorly graded soils})$$

Hence, it should follow that for well-graded coarse soils, a k_p - A power model will provide a more accurate prediction, whereas k_p - B or preferably $k_p = f_n(A, B)$ power models are more appropriate for their poorly graded counterparts.

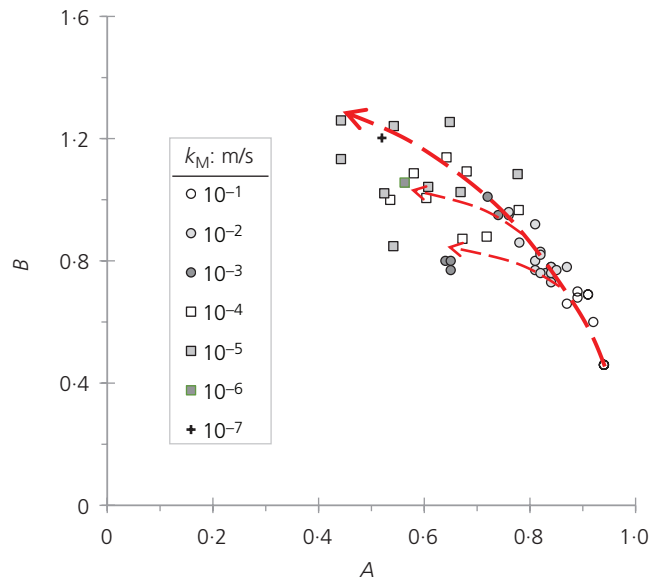


Figure 8. Trends of reducing k_M values indicated on grading entropy chart

The values of the grading entropy coordinate pairs for the 30 gravel and 17 sandy soil samples comprising data sets X and Y are plotted in Figure 8, with the associated order of magnitude of their k_M values indicated. With the values of the coordinate A approximately ranging from 0.5 to unity, from the identified trends presented in this figure, the value of k_M reduces overall for decreasing A and increasing B (as per Equations 15 and 16). For $A < 0.5$, one could also anticipate that the value of k_M would reduce overall with A decreasing and B increasing in value. As suggested by Feng *et al.* (2019a), the form of presentation of the experimental data given in Figure 8 may be useful as a design chart for engineers to make deductive assessments of the tendency of coarse-grained soils to exhibit high or low k values.

Correlations with compacted void ratio

In the case of data set Y, the 60 mm dia. \times ~150 mm high permeameter specimens were densified to achieve $94 \pm 3\%$ of the SP-compaction maximum dry density value determined for the major constituting parent soil element. In contrast, for data set X, the 90 mm dia. \times ~320 mm long permeameter specimens were comprised of four layers, each layer compacted manually by applying 70 blows using a sliding cylindrical tamper of 50 mm dia. and 2.5 kg self-weight to produce a compacted dry density of ~1.572 Mg/m³. Since maximum and minimum void ratio values were not reported for the various materials investigated, it was not possible to perform analysis and evaluations based on the relative density and (or) at a particular dry density ratio, rather only in terms of the reported $e_{\text{compacted}}$ values.

Compared with the 17 compacted sandy soil samples (0.34–0.56), the void ratio values of the 30 compacted gravel mixtures ($e_{\text{compacted}} = 0.51$ –0.85) were significantly greater. Using the combined data sets X and Y, the linear, exponential and power correlations were

investigated for the A – $e_{\text{compacted}}$ ($R^2 = 0.77$, 0.75 and 0.72, respectively) and B – $e_{\text{compacted}}$ ($R^2 = 0.63$, 0.57 and 0.57, respectively) relationships – that is, the normal A – $e_{\text{compacted}}$ and B – $e_{\text{compacted}}$ plots produced the strongest (linear) correlations, with $e_{\text{compacted}}$ positively correlating with A and negatively correlating with B (Figures 9(a) and 9(b) and Equations 19 and 20).

$$19. \quad e_{\text{compacted}} = 0.87A - 0.06 \quad (R^2 = 0.77, n = 47)$$

$$20. \quad e_{\text{compacted}} = -0.56B + 1.07 \quad (R^2 = 0.63, n = 47)$$

Similar to their dependences on k_M and D_{10} , when considering the combined data sets, coordinate A ($R^2 = 0.77$) appears to correlate more closely with $e_{\text{compacted}}$ than coordinate B (0.63). When the well-graded and poorly graded subsets were analysed separately, as expected, the fitted $e_{\text{compacted}}$ – A correlations indicated that, overall, the compacted well-graded soils had a marginally lower void ratio: see trend-line equations given in Figure 9(c). Further, compared with the well-graded soils ($R^2 = 0.47$), a stronger correlation was obtained between $e_{\text{compacted}}$ and coordinate B (0.67) for the poorly graded soils, reflecting again the fact that coordinate B measures the peakiness (kurtosis) of the distribution.

Proposed updated grading entropy model

This section proposes updated grading entropy permeability-prediction models, incorporating the new insights gleaned from the detailed analyses of the published data sets presented in the previous sections. Specifically, the updated model should incorporate the void ratio parameter and consideration should be given to separate evaluations for well-graded and poorly graded soil materials. Following from the k_p – A and k_p – B power correlations deduced for well-graded and poorly graded coarse-grained soils given by Equations 17 and 18, respectively, it was postulated in the section headed ‘Correlations with permeability coefficient’ that for well-graded soils, a k_p – A power model may be adequate, whereas k_p – B or preferably $k_p = f_n(A, B)$ power models are more appropriate for their poorly graded counterparts. In general, a correlation of the form $k_p = f_n(A, B, e)$ should prove statistically superior and extend the model’s scope and reliability, at least for assessments of a given material type with different densification levels. Based on various statistical analyses, the following improved grading entropy permeability-prediction model in which the void ratio is considered as an additional variable was proposed by the authors in the discussion paper by Feng *et al.* (2019)

$$21. \quad k_p = C_1 A^{C_2} B^{C_3} e^{C_4}$$

where C_1 , C_2 , C_3 and C_4 are the fitting coefficients, with C_1 expressed in the same units as k_p , whereas C_2 to C_4 are dimensionless.

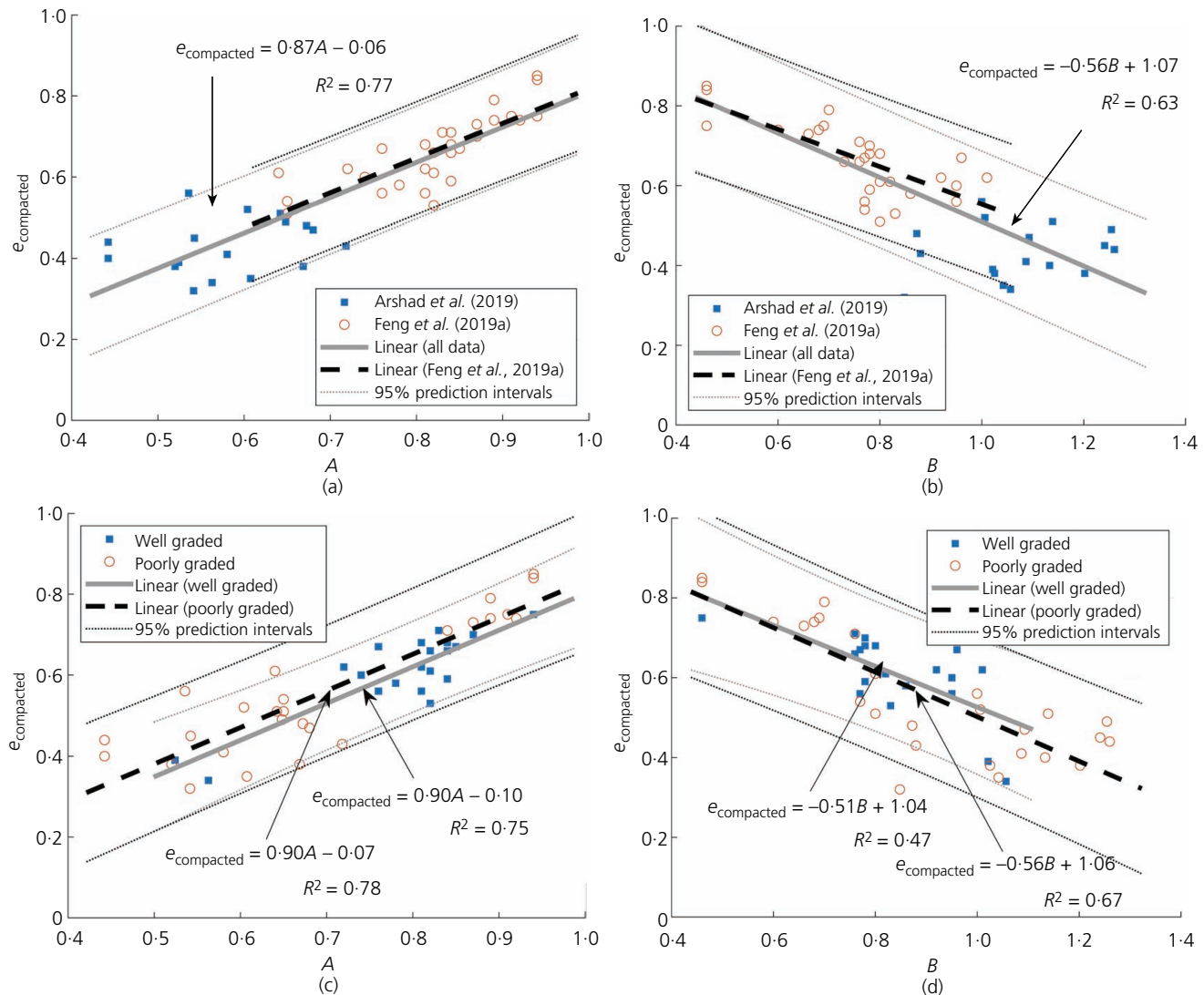


Figure 9. Dependence on compaction void ratio: (a) coordinate A ; (b) coordinate B ; (c) coordinate A considering soil gradation; (d) coordinate B considering soil gradation

The various grading entropy models described earlier were tested using the combined data sets X and Y , and also considering their well-graded and poorly graded soil subsets, with the results presented in Table 2. In all cases, including a second and a third variable into the regression model improves the quality of the

model, as shown by the adjusted R^2 (i.e. R_a^2), which penalises the number of variables employed in the model. However, it could be argued that, overall, the fitting of the three-variable model (A , B , e) is surprisingly good ($R^2 = 0.99$). However, it could be argued that, overall, adding B and the void ratio does not improve the

Table 2. Performance of various grading entropy permeability-prediction models for combined data sets X and Y

Data set	Model	Parameter value	Goodness of fit	p -value
Combined data sets X and Y ($n = 47$)	$k_p = C_1 A^{C_2} B^{C_3}$	$C_1 = 0.10 \text{ m/s}, C_2 = 12.36, C_3 = -4.17$	$R^2 = 0.86$	$R_a^2 = 0.84$
	$k_p = C_1 A^{C_2} B^{C_3} e^{C_4}$	$C_1 = 1.62 \text{ m/s}, C_2 = 5.65, C_3 = -2.35, C_4 = 7.99$	0.94	0.93
Well-graded soils ($n = 20$)	$k_p = C_1 A^{C_2}$	$C_1 = 1.45 \text{ m/s}, C_2 = 18.47$	0.93	0.92
	$k_p = C_1 A^{C_2} B^{C_3}$	$C_1 = 2.98 \text{ m/s}, C_2 = 20.07, C_3 = 1.68$	0.94	0.92
	$k_p = C_1 A^{C_2} B^{C_3} e^{C_4}$	$C_1 = 8.79 \text{ m/s}, C_2 = 11.41, C_3 = 1.10, C_4 = 6.51$	0.99	0.98
Poorly graded soils ($n = 27$)	$k_p = C_1 B^{C_3}$	$C_1 = 2.14 \times 10^{-4} \text{ m/s}, C_2 = -12.85$	0.81	0.79
	$k_p = C_1 A^{C_2} B^{C_3}$	$C_1 = 8.14 \times 10^{-3} \text{ m/s}, C_2 = 7.53, C_3 = -7.76$	0.87	0.84
	$k_p = C_1 A^{C_2} B^{C_3} e^{C_4}$	$C_1 = 0.18 \text{ m/s}, C_2 = 2.34, C_3 = -5.12, C_4 = 7.58$	0.95	0.93

quality of the prediction significantly, as the simple model (i.e. $k_p = C_1 A^{C_2}$) already provides a good fit ($R^2 = 0.93$); whereas in the case of poorly graded soils, the three-variable model significantly improves the quality of the prediction (R^2 increasing from 0.81 to 0.95).

Summary and conclusions

The grading entropy framework provides a convenient means of presenting and interpreting the gradation characteristics of various soils. Further, the grading entropy approach provides a powerful tool for permeability-coefficient assessments of coarse-grained soils. From examination of the two published data sets comprising silty sand, sand and gravel materials, the compacted void ratio, $\log D_{10}$ and $\log D_{50}$ were found to correlate positively with coordinate A and negatively correlate with coordinate B . Further, apparently stronger correlations occur for A compared with B . For the well-graded soils subset, strong correlations were found between C_U and coordinates A and B , and also between $\log D_{10}$ ($\log D_{50}$) and coordinate A . Consistent with these findings, $\log k_M$ was found to correlate inversely with $\log B$ and correlate directly with $\log A$ and e ($\log e$), such that for the investigated data sets, power functions of the form $k_p = C_1 A^{C_2} B^{C_3}$ and particularly $k_p = C_1 A^{C_2} B^{C_3} e^{C_4}$ proved statistically superior compared with other possible formulations.

Compared with the two-variable model (A , B), the three-variable model (i.e. with the e parameter included) gave a better fit to the experimental k_M values and has broader scope in terms of a wider application range of densification (compaction) states. Consideration should be given to separate evaluations for well-graded and poorly graded soil materials. Note that the values of the fitting coefficients C_1 to C_4 determined from regression analysis are specific to the soil gradations and compaction levels investigated for the permeability tests – that is, the deduced correlations cannot be applied with confidence for dissimilar materials.

Further studies investigating a much larger database composed of more diverse sand and silty sand materials are recommended towards increasing the predictive power of the associated three-variable (A , B , e) regression correlation. The inclusion of a particle shape factor and specific surface parameters in the upgraded three-variable model may possibly produce further performance enhancements.

REFERENCES

- Arshad M, Nazir MS and O'Kelly BC (2019) Evolution of hydraulic conductivity models for sandy soils. *Proceedings of the Institution of Civil Engineers – Geotechnical Engineering*, <https://doi.org/10.1680/jgeen.18.00062>.
- ASTM (2017) ASTM D 2487-17: Standard practice for classification of soils for engineering purposes (Unified Soil Classification System). ASTM International, West Conshohocken, PA, USA.
- Carman PC (1937) Fluid flow through granular beds. *Transactions of the Institution of Chemical Engineers* **15**: 150–166.
- Carman PC (1939) Permeability of saturated sands, soils and clays. *Agricultural Science* **29**(2): 263–273, <https://doi.org/10.1017/S0021859600051789>.
- Carrier WD III (2003) Goodbye, Hazen; hello, Kozeny–Carman. *Geotechnical and Geoenvironmental Engineering* **129**(11): 1054–1056, [https://doi.org/10.1061/\(ASCE\)1090-0241\(2003\)129:11\(1054\)](https://doi.org/10.1061/(ASCE)1090-0241(2003)129:11(1054)).
- Castillo E, Calviño A, Nogal M and Lo HK (2014a) On the probabilistic and physical consistency of traffic random variables and models. *Computer-aided Civil and Infrastructure Engineering* **29**(7): 496–517, <https://doi.org/10.1111/mice.12061>.
- Castillo E, O'Connor AJ, Nogal M and Calviño A (2014b) On the physical and probabilistic consistency of some engineering random models. *Structural Safety* **51**: 1–12, <https://doi.org/10.1016/j.strusafe.2014.05.003>.
- Chapuis RP (2004) Predicting the saturated hydraulic conductivity of sand and gravel using effective diameter and void ratio. *Canadian Geotechnical Journal* **41**(5): 787–795, <https://doi.org/10.1139/t04-022>.
- Chapuis RP (2012) Predicting the saturated hydraulic conductivity of soils: a review. *Bulletin of Engineering Geology and the Environment* **71**(3): 401–434, <https://doi.org/10.1007/s10064-012-0418-7>.
- Chapuis RP and Aubertin M (2003) On the use of the Kozeny–Carman equation to predict the hydraulic conductivity of soils. *Canadian Geotechnical Journal* **40**(3): 616–628, <https://doi.org/10.1139/t03-013>.
- Feng S, Vardanega PJ, Ibraim E, Widyatmoko I and Ojum C (2018a) Assessing the hydraulic conductivity of road paving materials using representative pore size and grading entropy. *ce/papers* **2**(2–3): 871–876, <https://doi.org/10.1002/cepa.780>.
- Feng S, Vardanega PJ and Ibraim E (2018b) Comparison of prediction models for the permeability of granular materials using a database. In *Contemporary Issues in Soil Mechanics: Proceedings of the 2nd GeoMEast International Congress and Exhibition on Sustainable Civil Infrastructures, Egypt 2018* (Hemeda S and Bouassida M (eds)). Springer, Cham, Switzerland, pp. 1–13.
- Feng S, Vardanega PJ, Ibraim E, Widyatmoko I and Ojum C (2019a) Permeability assessment of some granular mixtures. *Géotechnique* **69**(7): 646–654, <https://doi.org/10.1680/jgeot.17.T.039>.
- Feng S, Vardanega PJ, Ibraim I et al. (2019b) Discussion: Permeability assessment of some granular mixtures. *Géotechnique*, <https://doi.org/10.1680/jgeot.19.D.005>.
- Imre E, Lőrincz J and Rózsa P (2008) Characterization of some sand mixtures. In *12th International Conference on Computer Methods and Advances in Geomechanics 2008* (Jadhav MN (ed.)). Curran Associates, Red Hook, NY, USA, vol. 3, pp. 2064–2075.
- Imre E, Lőrincz J, Szendefy J et al. (2012) Case studies and benchmark examples for the use of grading entropy in geotechnics. *Entropy* **14**(6): 1079–1102, <https://doi.org/10.3390/e14061079>.
- Kozeny J (1927) Über kapillare leitung des wassers im boden (Aufstieg, versickerung und anwendung auf die bewässerung). *Akademie der Wissenschaften in Wien Sitzungsber* **136**(2a): 271–306 (in German).
- Lőrincz J (1986) *Grading Entropy of Soils*. PhD thesis, Technical University of Budapest, Budapest, Hungary (in Hungarian).
- Lőrincz J, Imre EM and Singh VP (2017) The grading entropy-based criteria for structural stability of granular materials and filters. In *Granular Materials* (Sakellariou M (ed.)). IntechOpen, London, UK, pp. 161–182.
- McDougall JR, Imre E, Barreto D and Kelly D (2013) Volumetric consequences of particle loss by grading entropy. *Géotechnique* **63**(3): 262–266, <https://doi.org/10.1680/geot.SIP13.T.002>.
- O'Kelly BC (2005) Consolidation properties of a dewatered municipal sewage sludge. *Canadian Geotechnical Journal* **42**(5): 1350–1358, <https://doi.org/10.1139/t05-054>.
- O'Kelly BC (2006) Compression and consolidation anisotropy of some soft soils. *Geotechnical and Geological Engineering* **24**(6): 1715–1728, <https://doi.org/10.1007/s10706-005-5760-0>.

- O'Kelly BC (2008) Development of a large consolidometer-permeameter apparatus for testing soft soils. In *Proceedings of GeoCongress 2008: Characterization, Monitoring and Modeling of GeoSystems* (Alshawabkeh AN, Reddy KR and Khire MV (eds)). American Society of Civil Engineers, Reston, VA, USA, GSP 179, vol. 5, pp. 60–67.
- O'Kelly BC (2009) Development of a large consolidometer apparatus for testing peat and other highly organic soils. *SUO – Mires and Peat* **60**(1–2): 23–36.

- O'Kelly BC (2016) Briefing: Laboratory permeability determinations for biosolids. *Environmental Geotechnics* **3**(3): 132–139, <https://doi.org/10.1680/jenge.15.00026>.
- Shannon CE (1948) A mathematical theory of communication. *Bell System Technical Journal* **27**(3): 379–423, <https://doi.org/10.1002/j.1538-7305.1948.tb01338.x>.
- Singh VP (2014) *Entropy Theory in Hydraulic Engineering: an Introduction*. American Society of Civil Engineers, Reston, VA, USA.

How can you contribute?

To discuss this paper, please submit up to 500 words to the editor at journals@ice.org.uk. Your contribution will be forwarded to the author(s) for a reply and, if considered appropriate by the editorial board, it will be published as a discussion in a future issue of the journal.