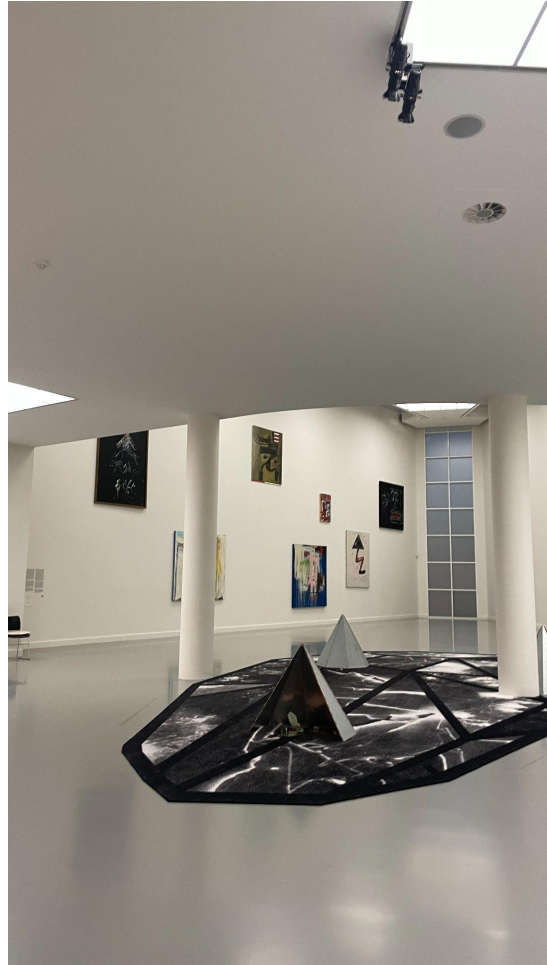
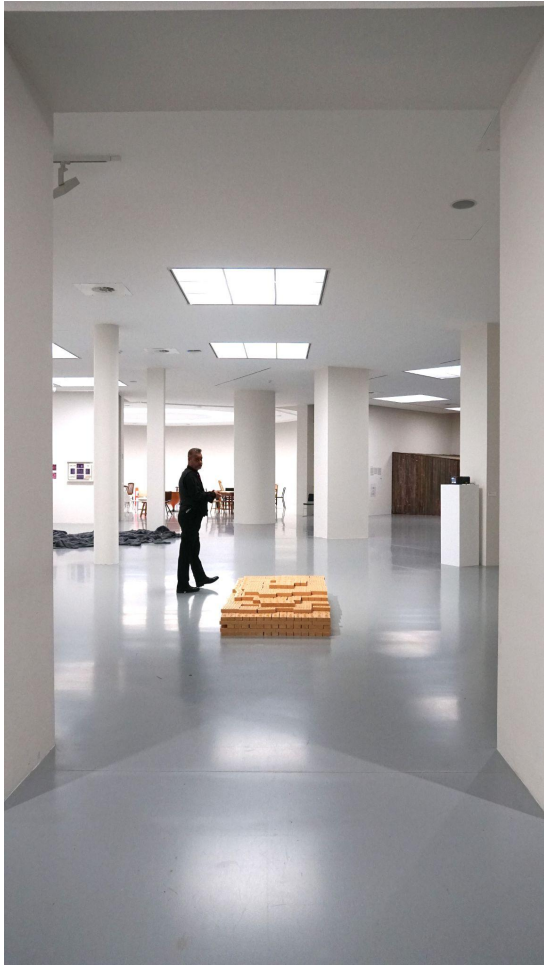


Nicolas A. Bueno Vega
Msc 4 Interiors Building Cities

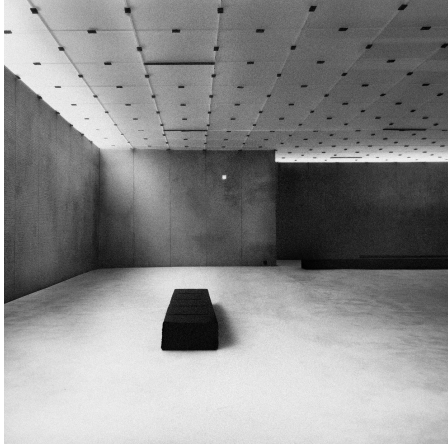
**Publicness in the
Contemporary Museum**







KUNSTHAUS BREGENZ



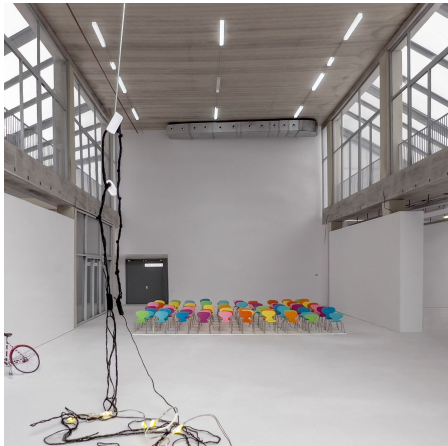
NEW MUSEUM



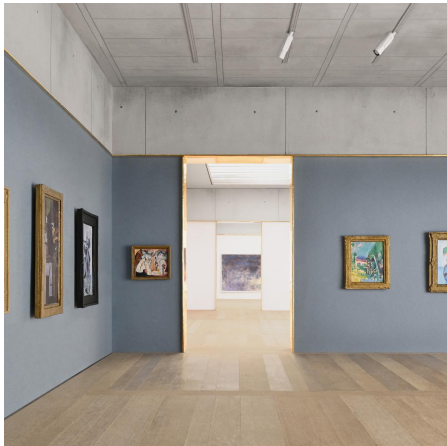
ABTEIBERG



MASP



FRAC



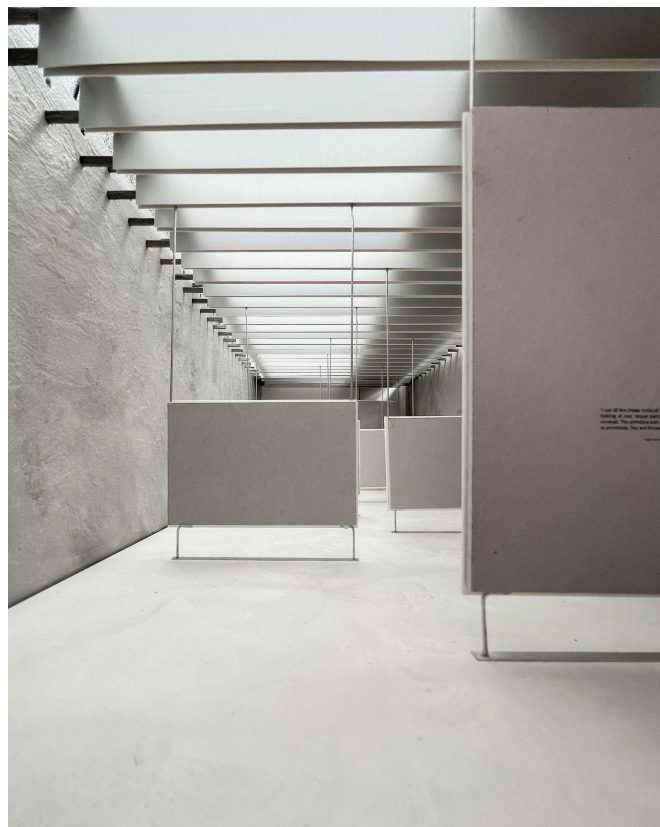
KUNSTHAUS ZURICH



TATE MODERN



POMPIDOU



Gallery space for Marlene Dumas by Nicolas Bueno



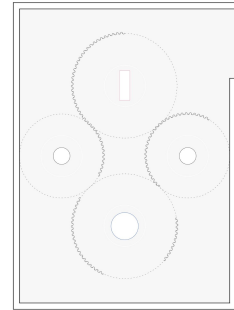
Gallery space for Charif Benhelima by Denzel Manuel



Gallery space for Jan Vercruyse by Marianna Moskal



Gallery space for Nadia Naveau by Anna Kokot

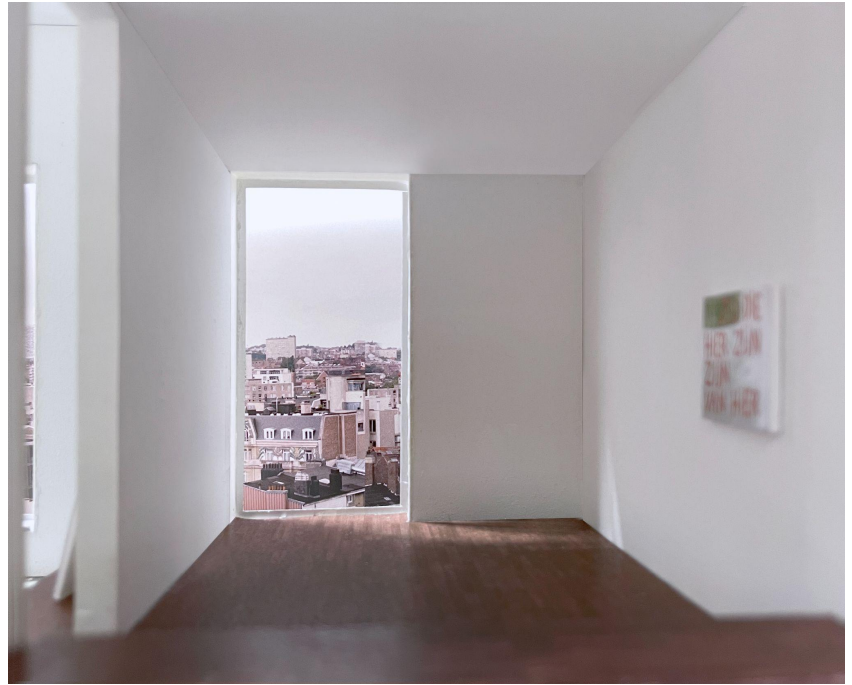




Gallery space for Nel Aerts by Rafael Trinidad



Gallery space for Wilhelm Sasnal by Bartosz Teodorczyk



Gallery space for Walter Swennen by Dagna Dembiecka



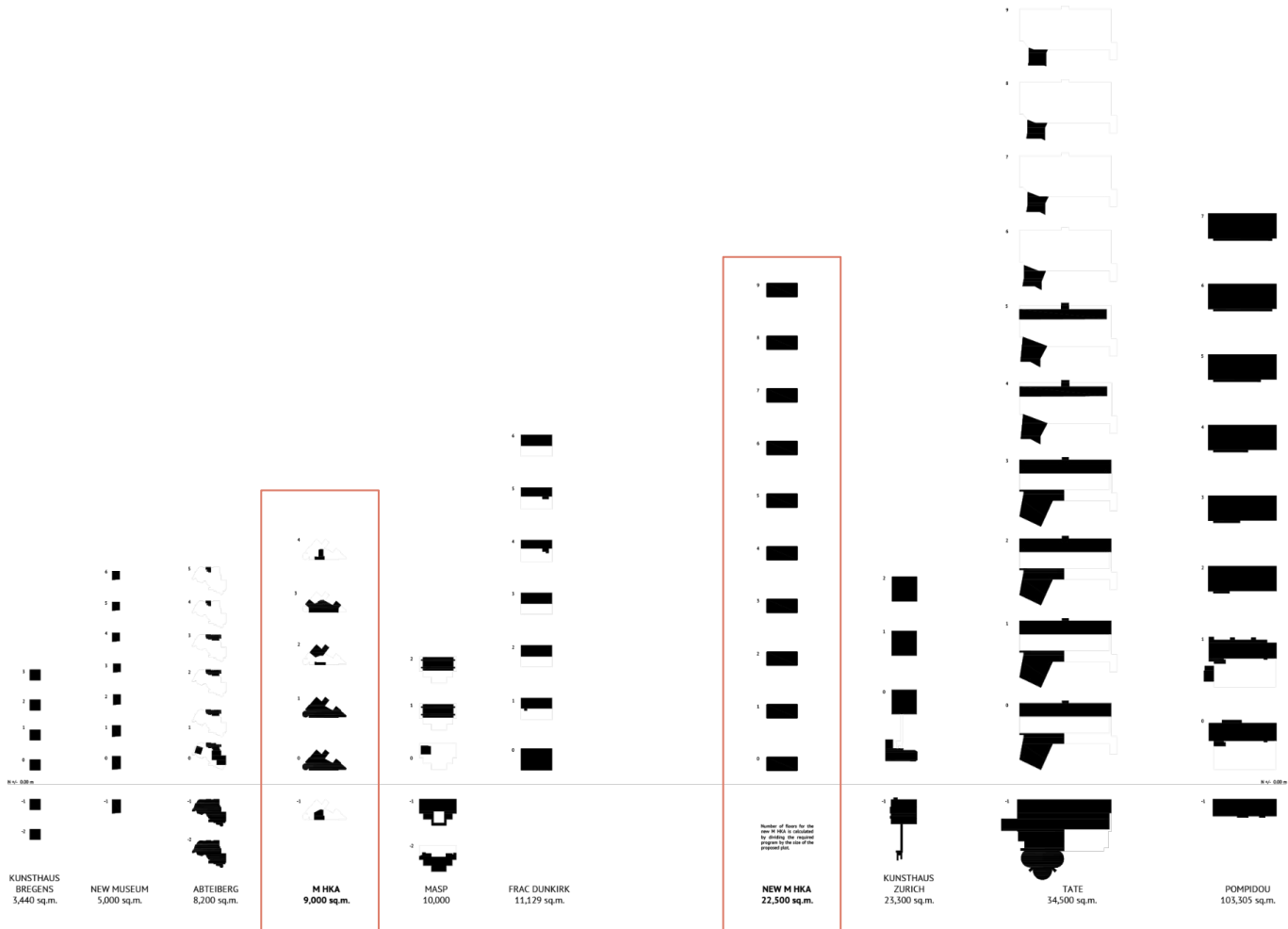


ANTVERPIA.
Gallis ANVERS.
Vernacule ANTWERPEN.

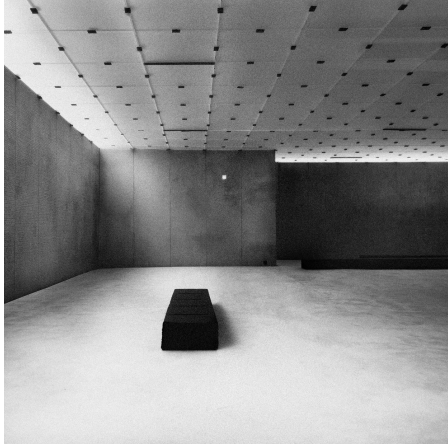




As a Cultural Heritage Institution of the Flemish Community, the museum's mission became more ambitious. Through the new construction project, with an estimated total surface area of maximum +/- 22 540 m² (gross), Flanders wants to give a significant boost to cultural policy. M HKA's mission is to further expand the Flemish Community's collection of contemporary art and to manage its collection, to show the collection in a permanent display, to present itself more explicitly as a research institute and to set up an archive department for the visual arts.



KUNSTHAUS BREGENZ



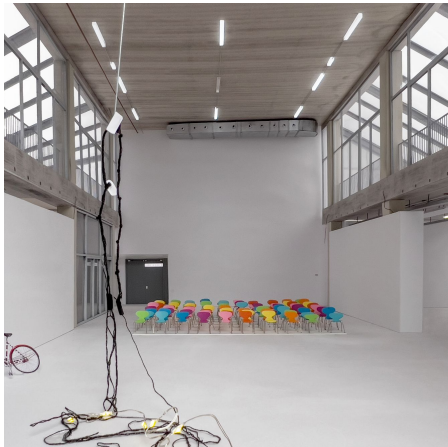
NEW MUSEUM



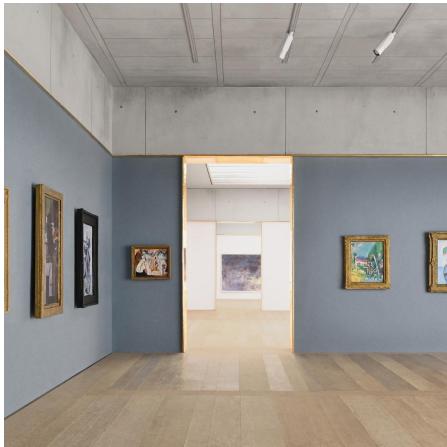
ABTEIBERG



MASP



FRAC



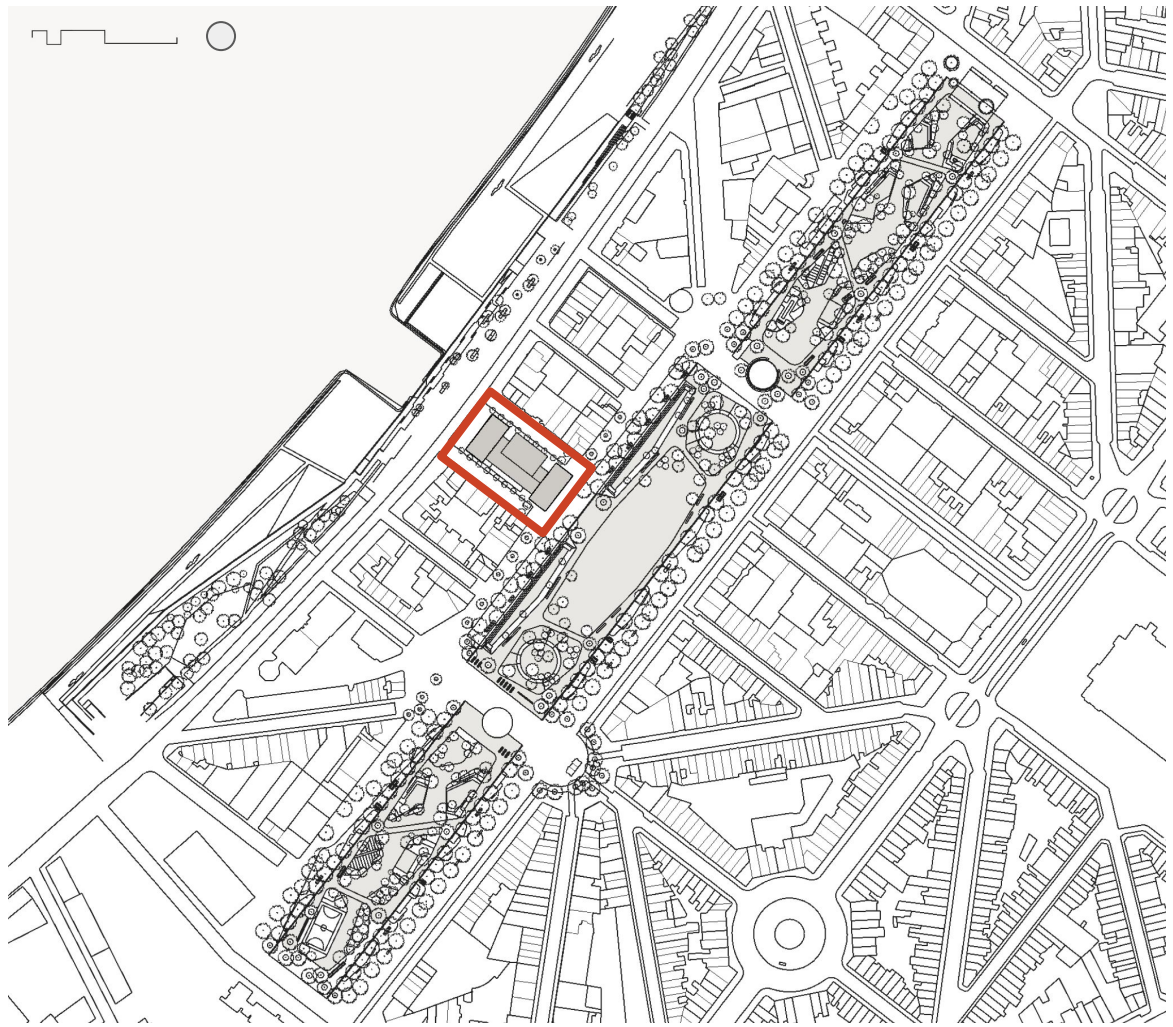
KUNSTHAUS ZURICH

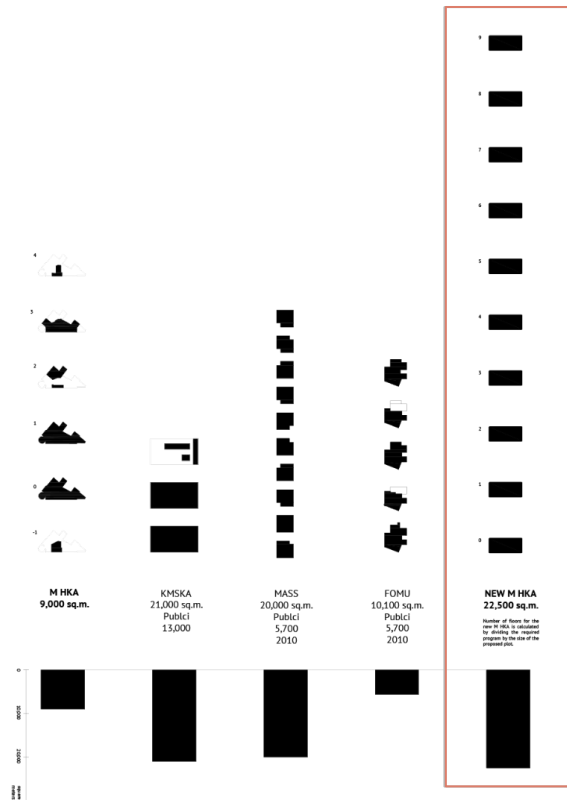
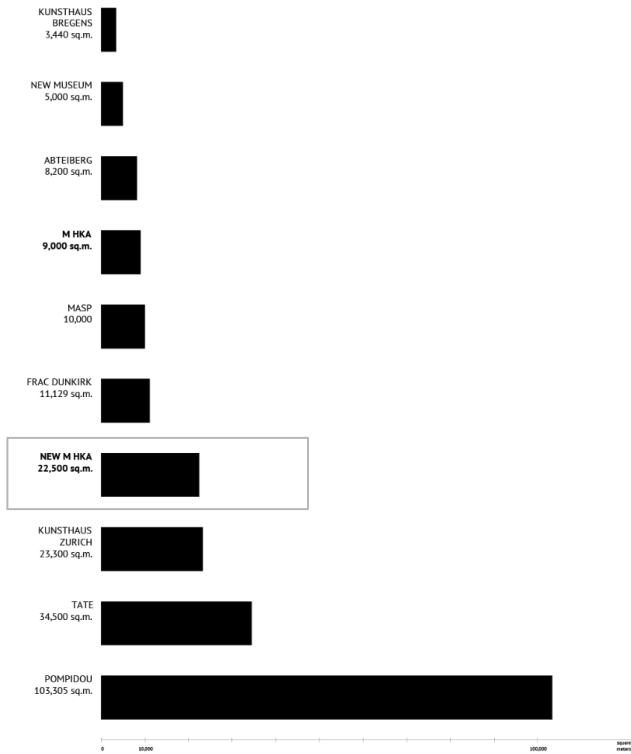


TATE MODERN



POMPIDOU

















The development toward surpassing the institution of the museum already begins with the Dadaism of the 1920s, with Duchamp's anti-art, which tacitly—but logically—implies the anti-museum. In the same way, however, as the concept of anti-art only makes sense in opposition to that which has previously been considered art, the anti-museum can only be

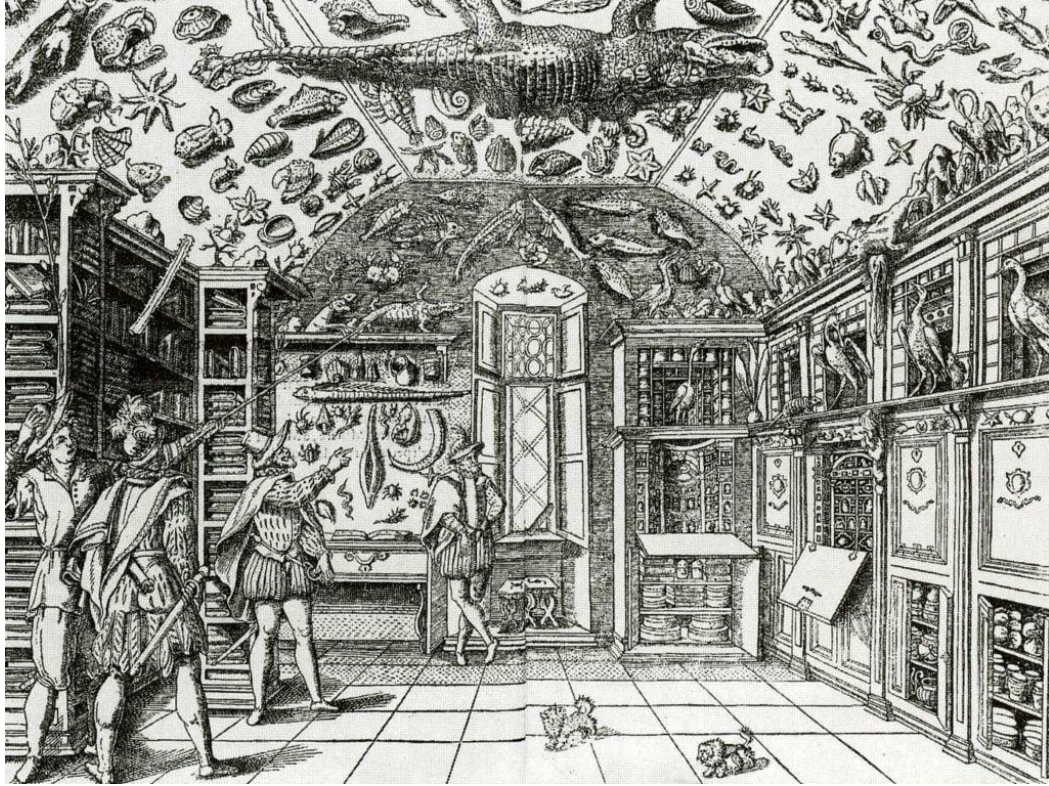
understood in relation to that which has previously been the museum. It was the fate of anti-art that it had to remain art—and the anti-museum, too, will stay a museum. The most consequent foray into the future was made as early as 1959 by Willem

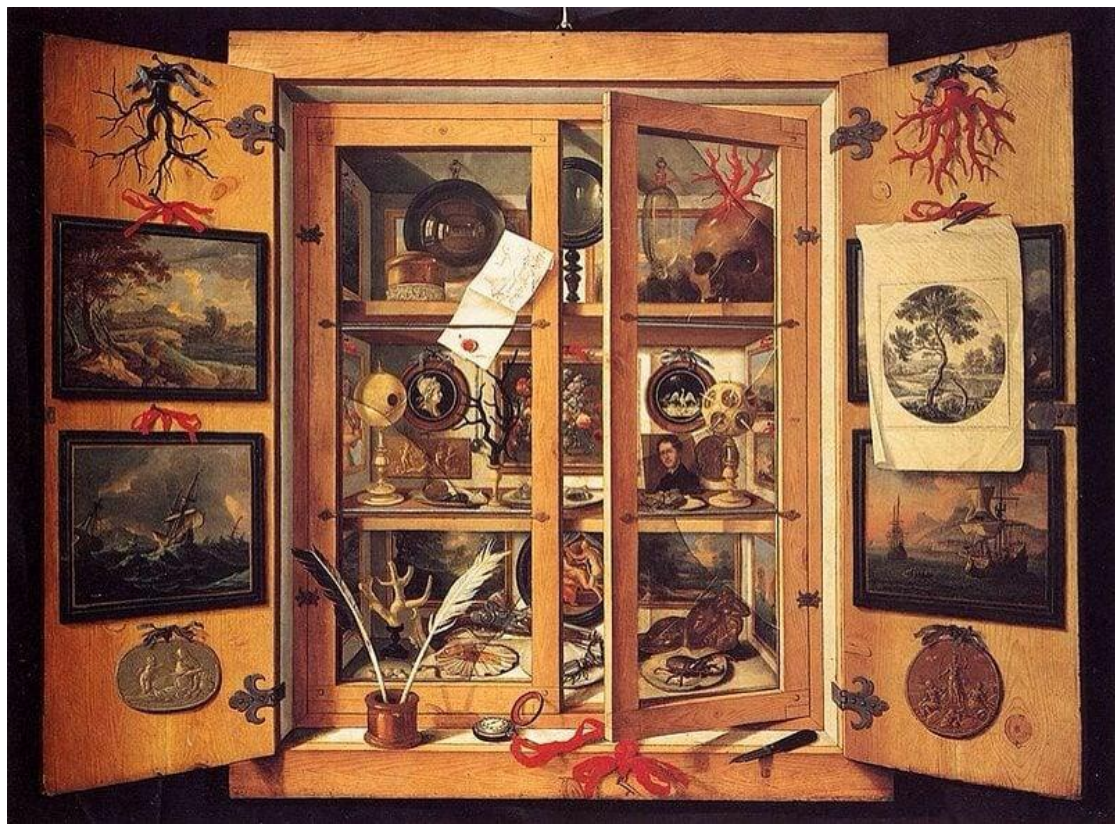
Johannes Cladders. *The Anti Museum: Thoughts on Art Cultivation*. 1968





De-Glorifying the institution







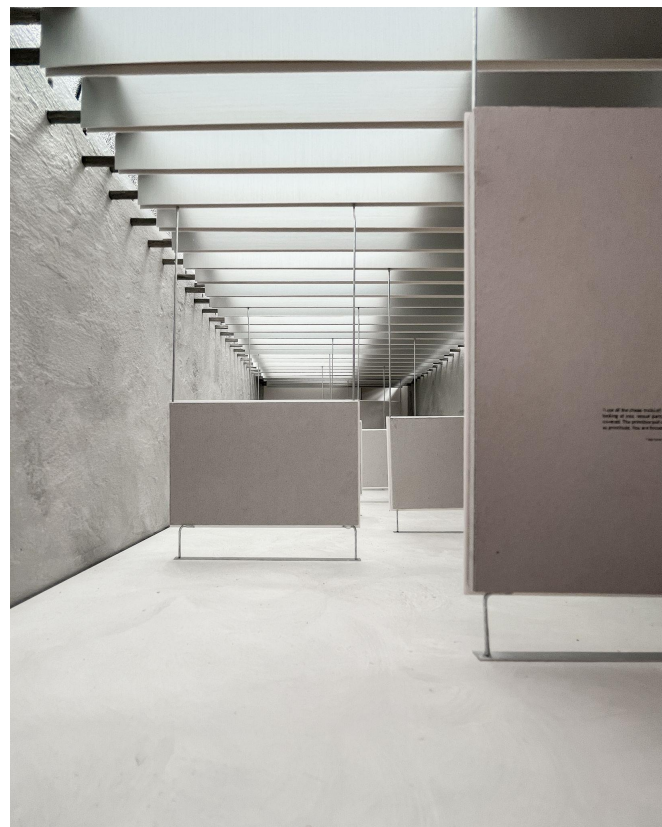
Yoga sessions at M HKA

2 Oct 2022 - 3 Sep 2023

M HKA









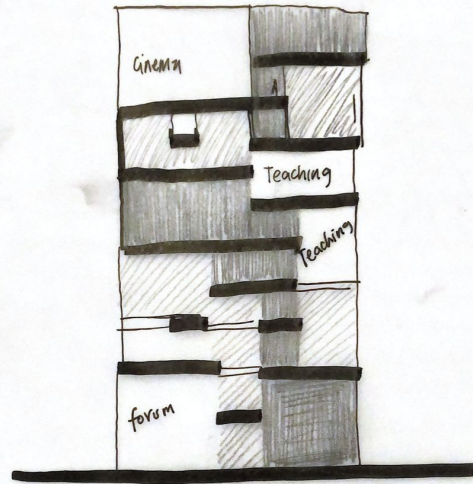
Some of the late CHARLIE BROWNS World Treasures
Railway Tavern *Limehouse*





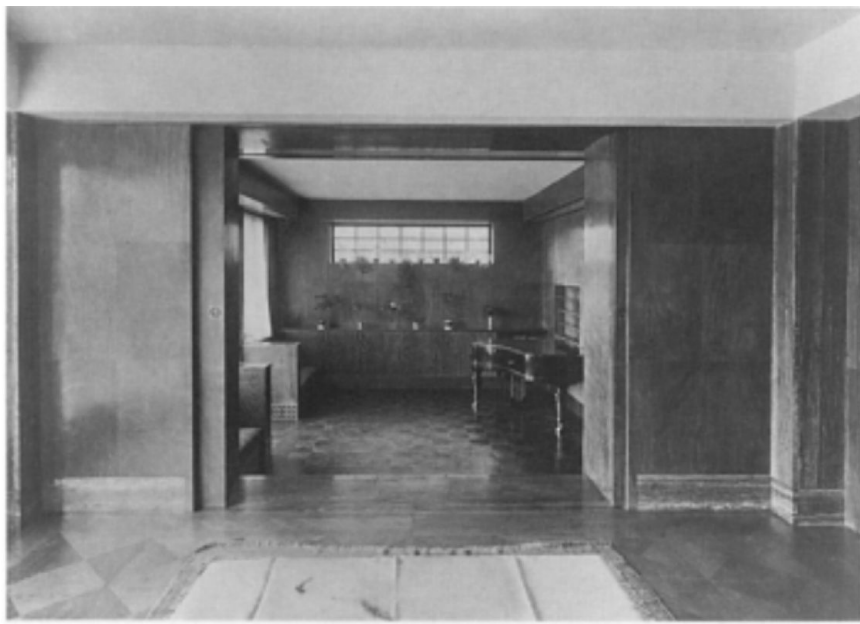
De-Glorifying the institution
through publicness.

The four basic components in the organization chart of the future museum of contemporary art are modelled on these ICOM tasks. The request of the current minister of culture, Sven Gatz, to give the collection a more explicit place in the museum is one of the most important reasons for launching a project for a new construction. The existing building with its characteristic floor plan, unequivocal circulation patterns and large open floors fails to support this permanent collection presentation, or does so only with great difficulty. The formulated commission therefore places new demands on the new museum building.



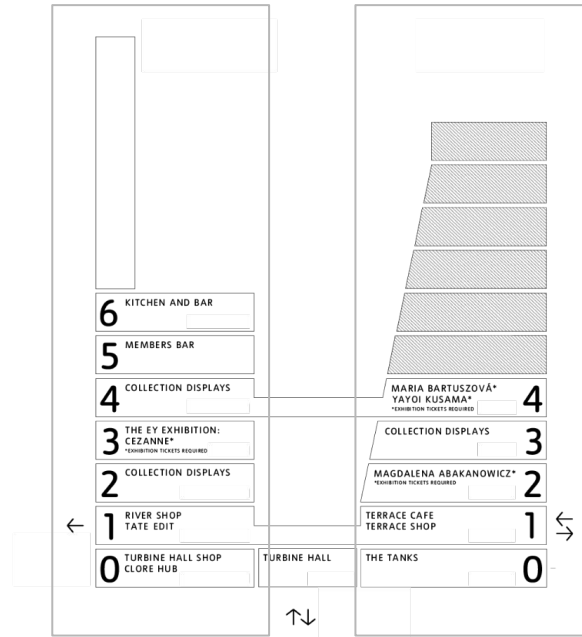
use the publicness of spaces
not to compartmentalize
but rather articulate
and intertwine





Forum

Temporary Exhibition

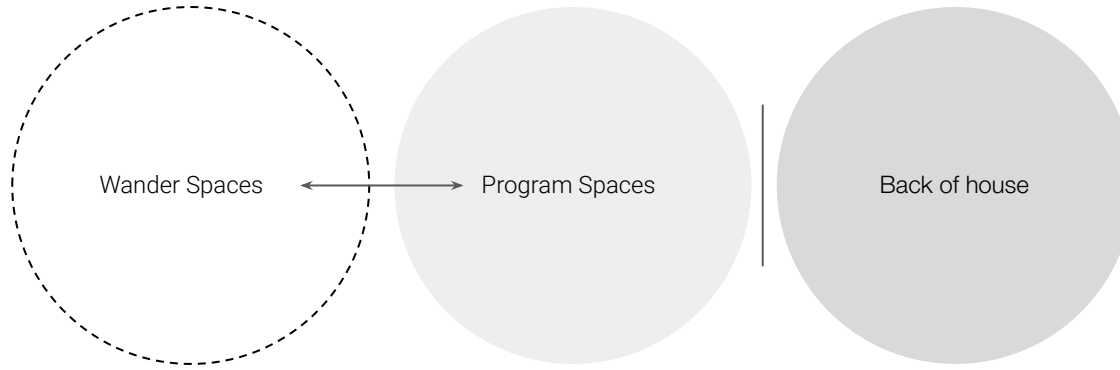




15 378 Net



15 898 Gross



Wander Spaces

Program Spaces

Back of house

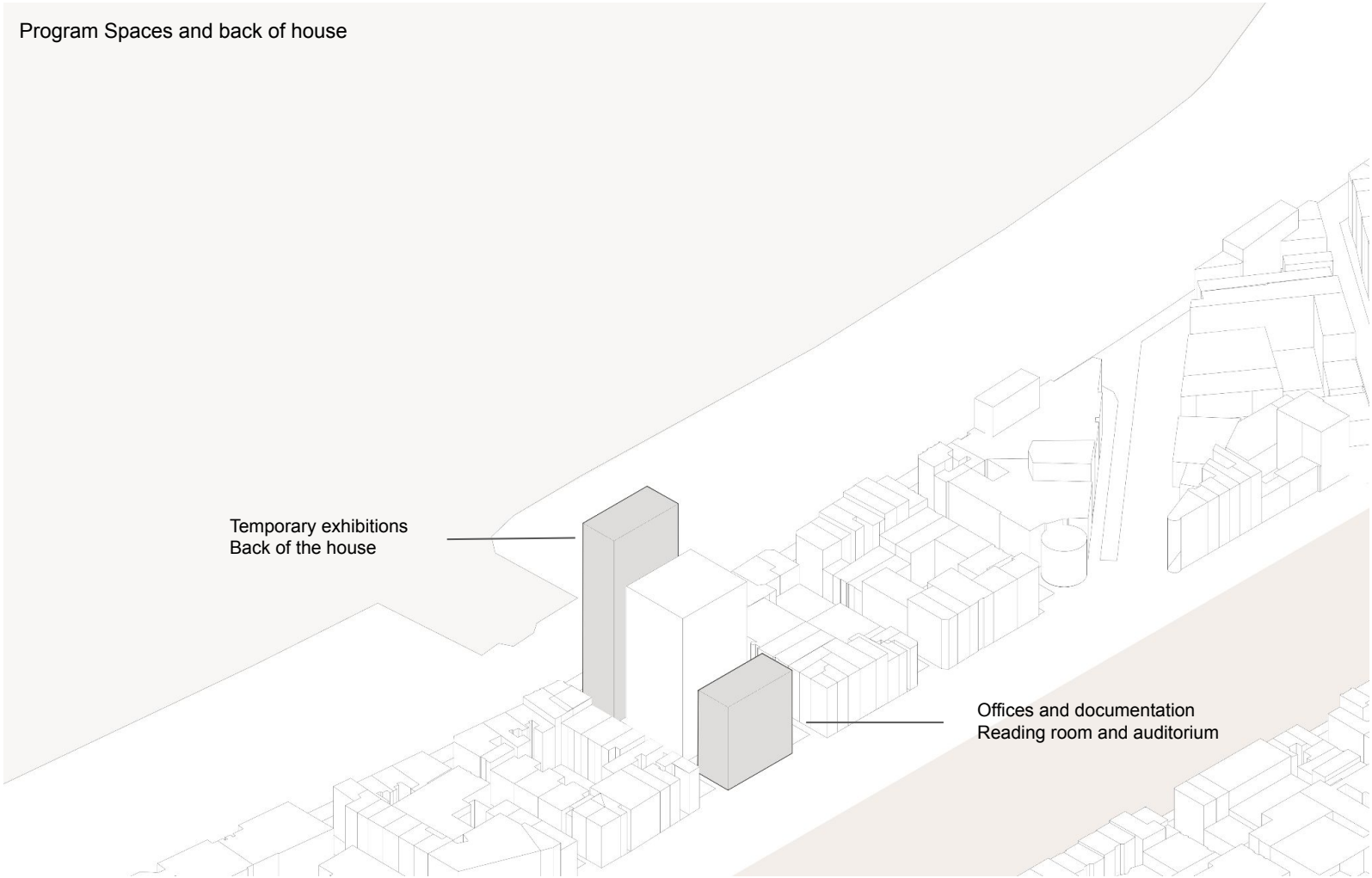
Free access spaces where the main focus is the forum aspect of the institution. Flexible for use

Spaces that host specific activities with some degree of flexibility

Closed of spaces to the public. Highly controlled and not flexible to other activities.

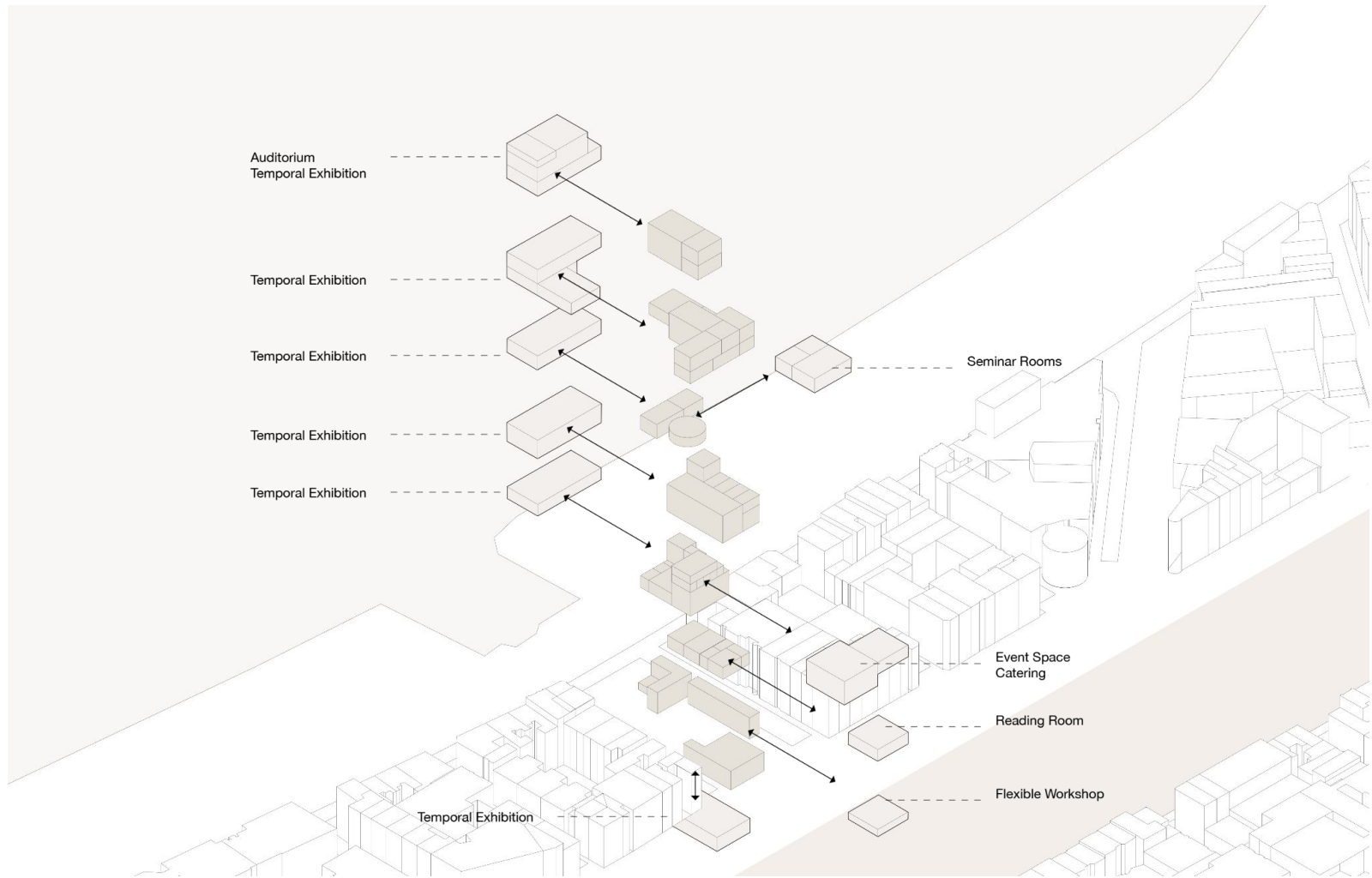


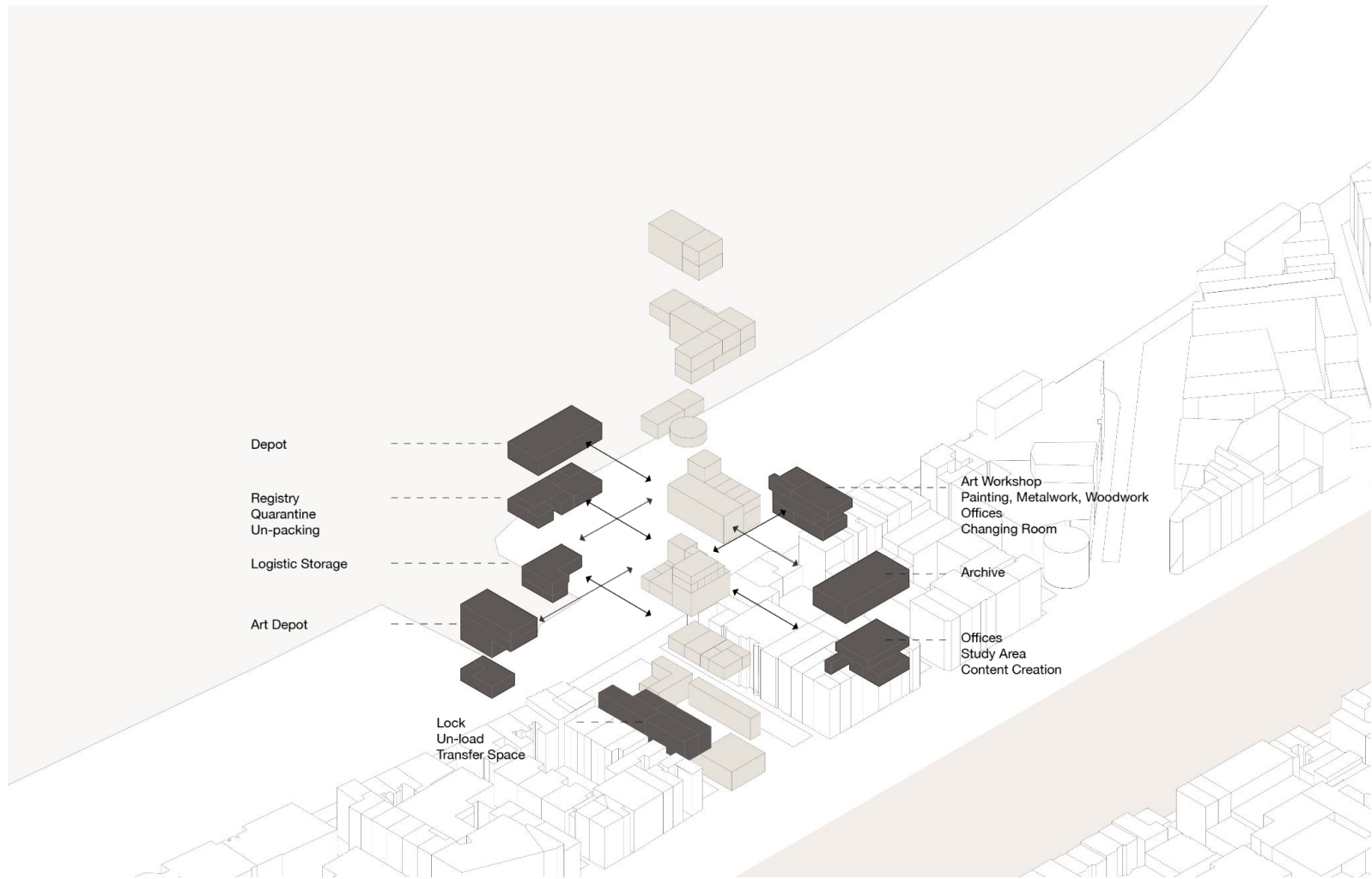
Program Spaces and back of house

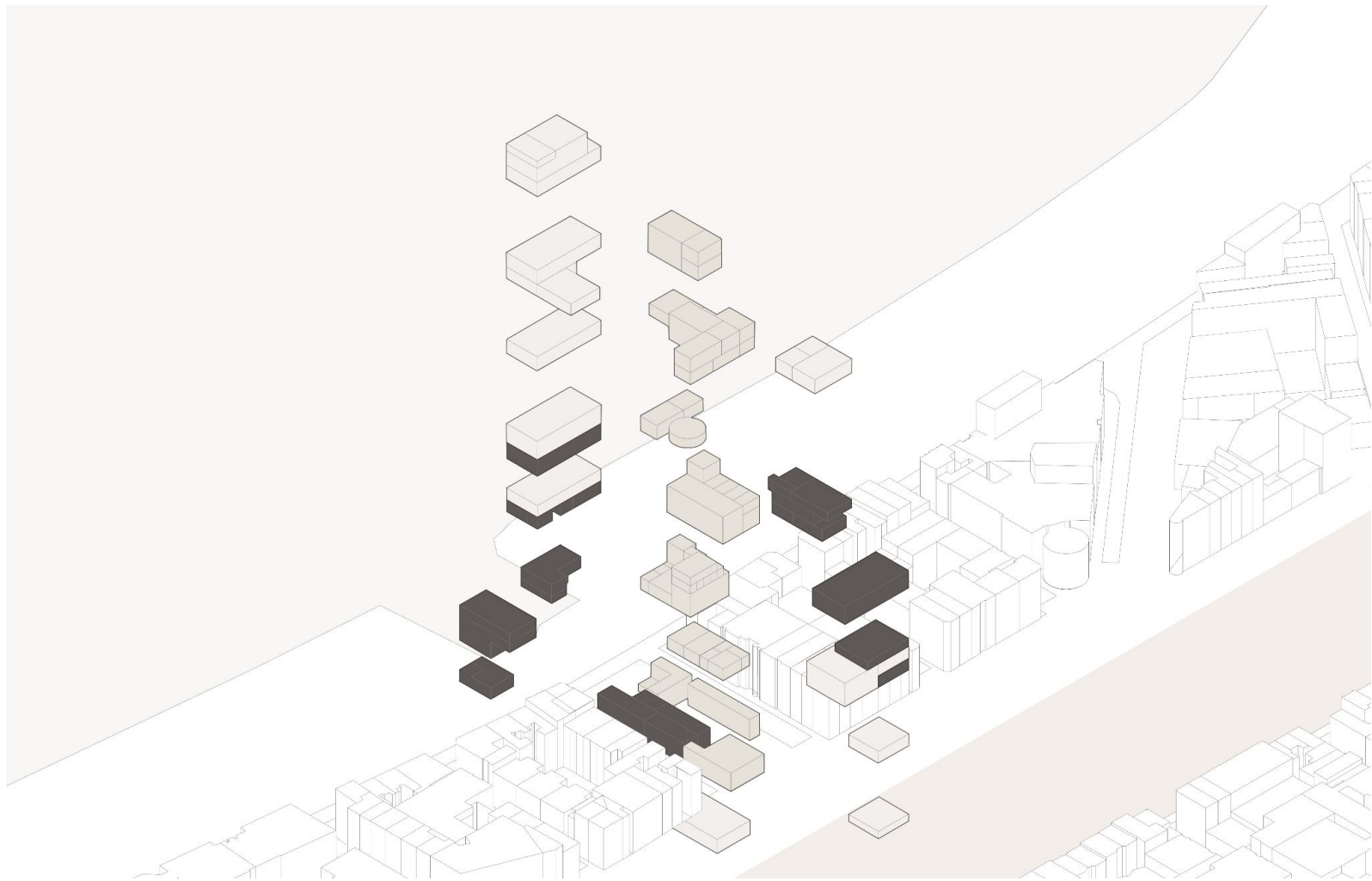


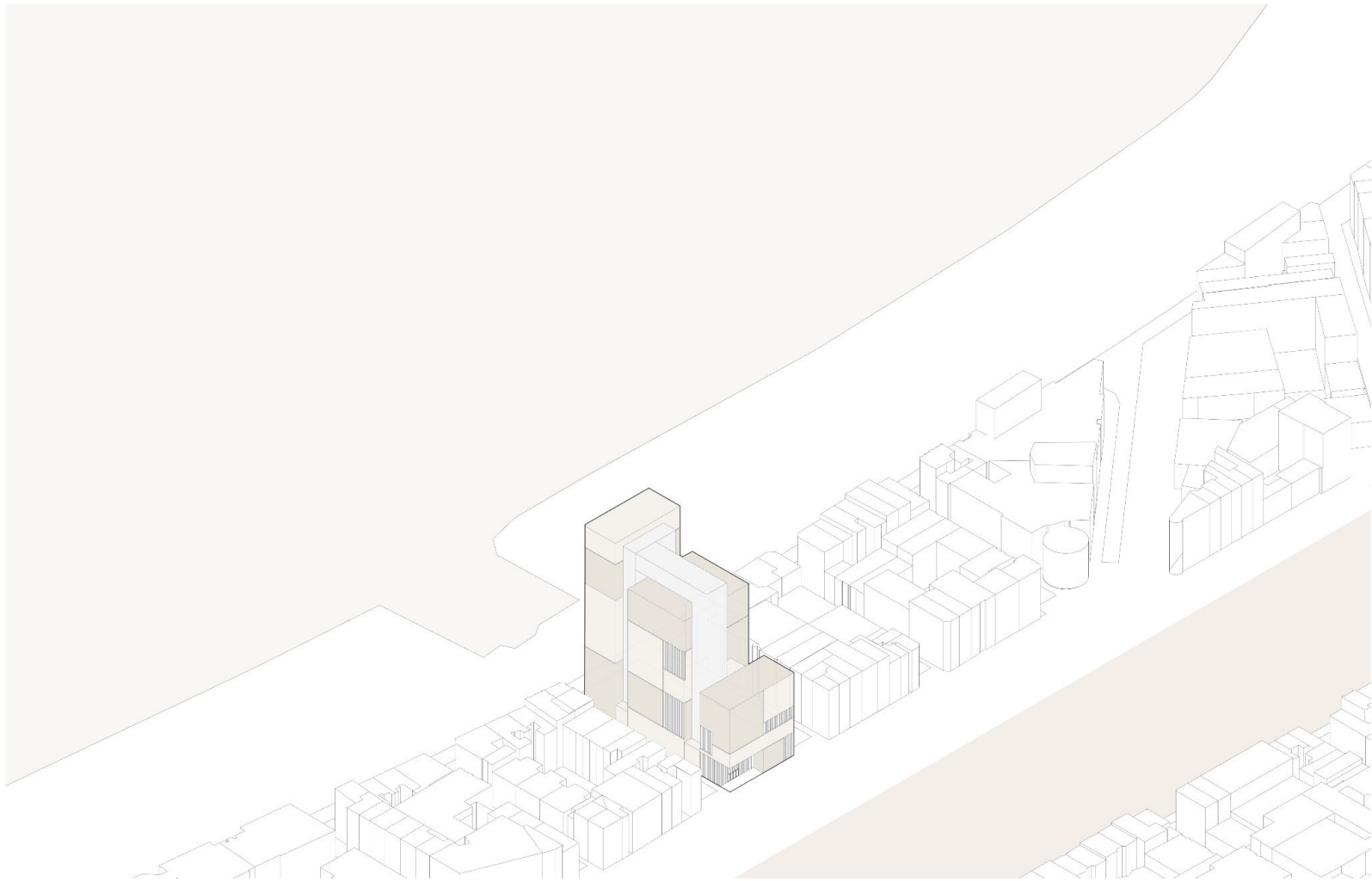
Temporary exhibitions
Back of the house

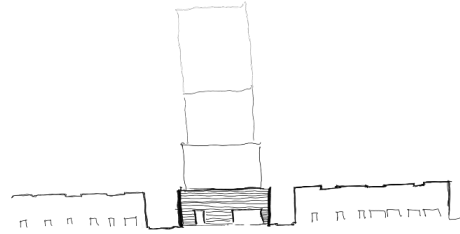
Offices and documentation
Reading room and auditorium



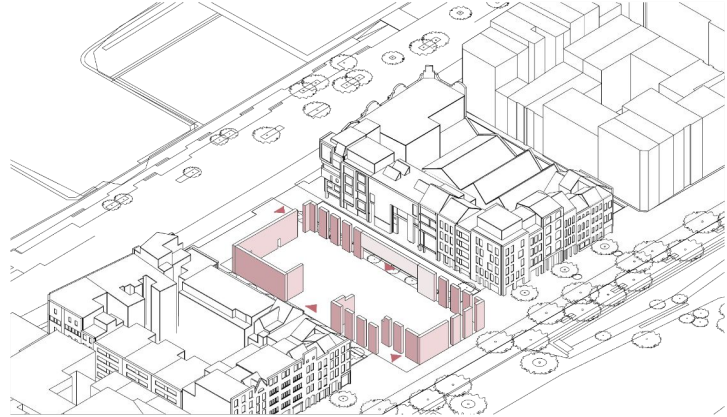
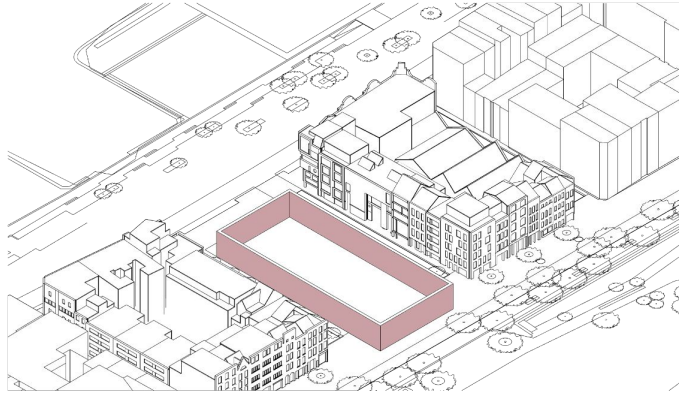








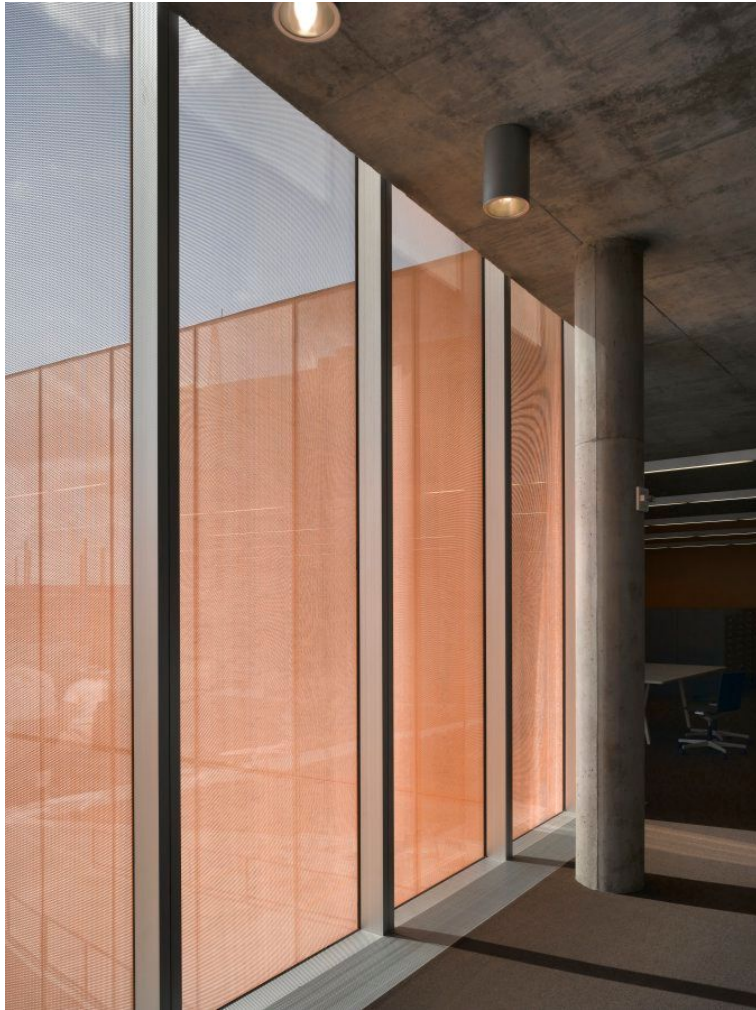




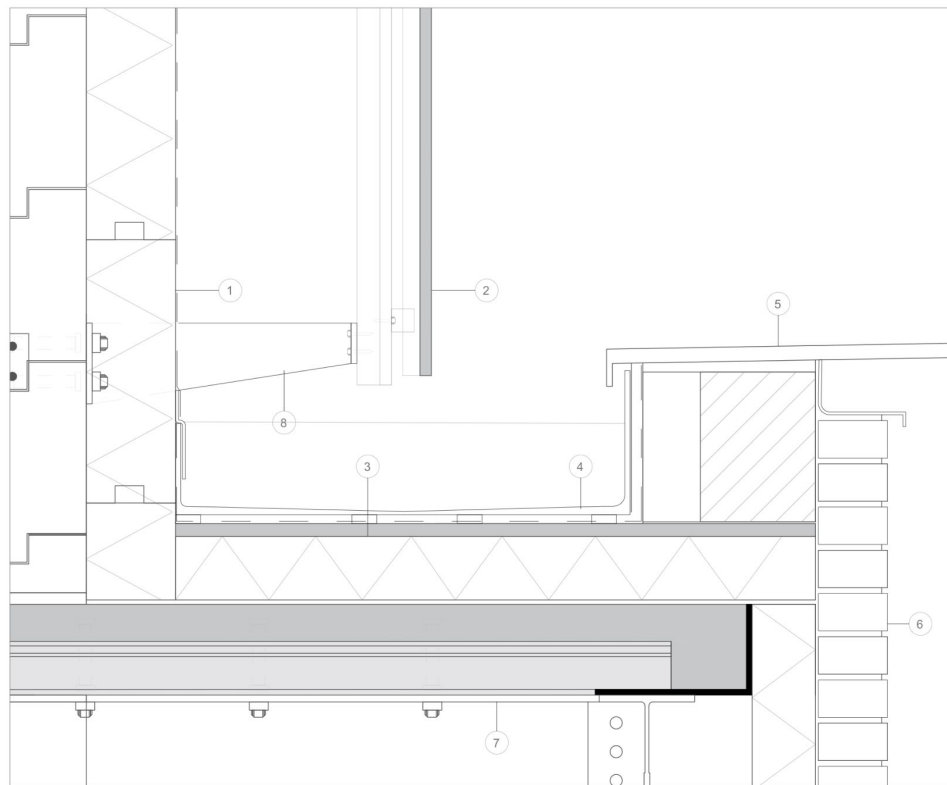
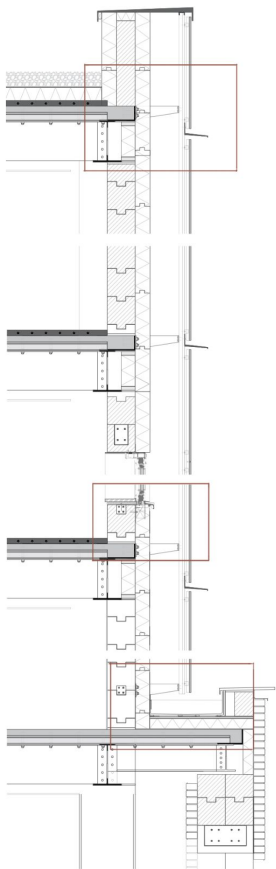






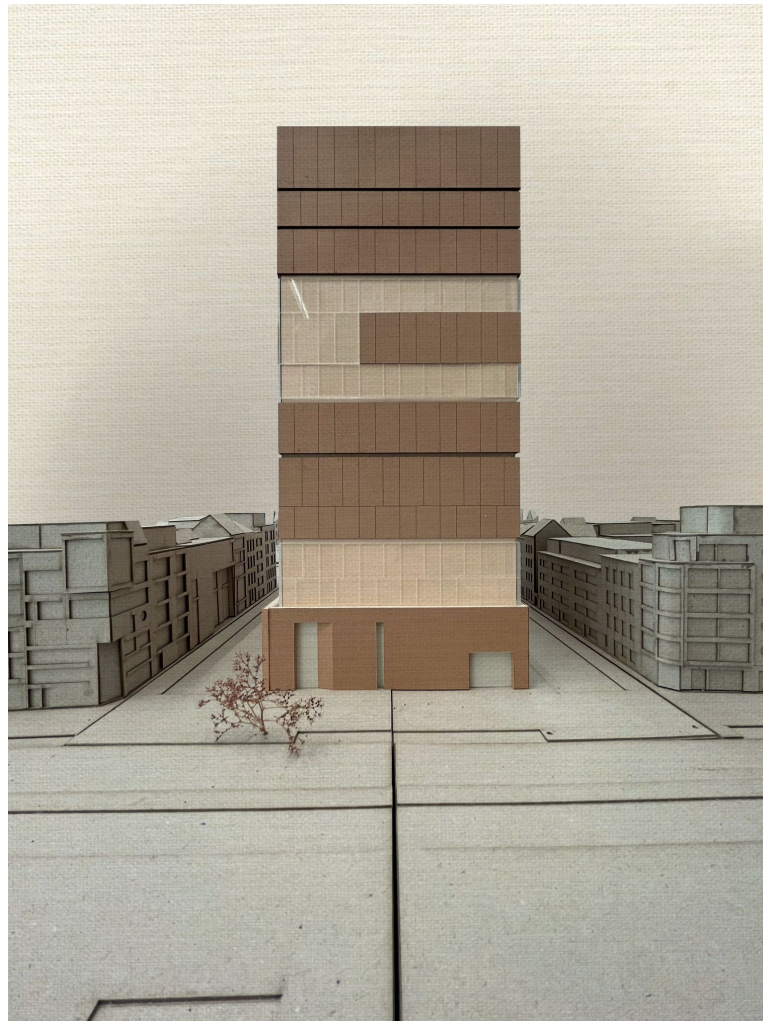


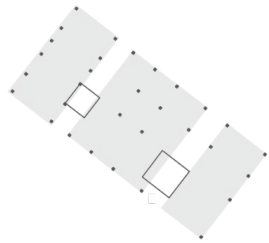
Facade close up



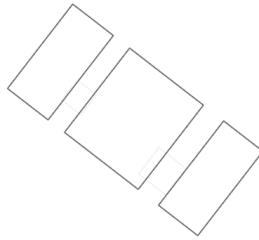
Vertical Facade Detail 1:5

1. weatherproof membrane
woodfiber insulation 160mm
hempblock LB 300mm
2. glass 15mm
aluminium frame 300 mm
profile
aluminium cladding profile
61mm
3. waterproof mortar 20mm
weather proof membrane
aluminium rain collector
aluminium trim
4. Kolumba brick cladding
weather proof membrane
woodfiber insulation 160mm
5. composite floor slab
steel deck 8mm
in situ concrete 150mm
underfloor membrane
poured polished concrete with
integrated floor heating 60mm
6. steel support plate 15 mm

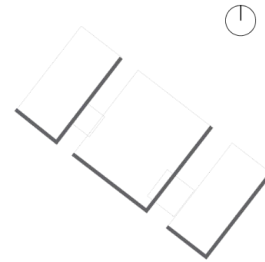




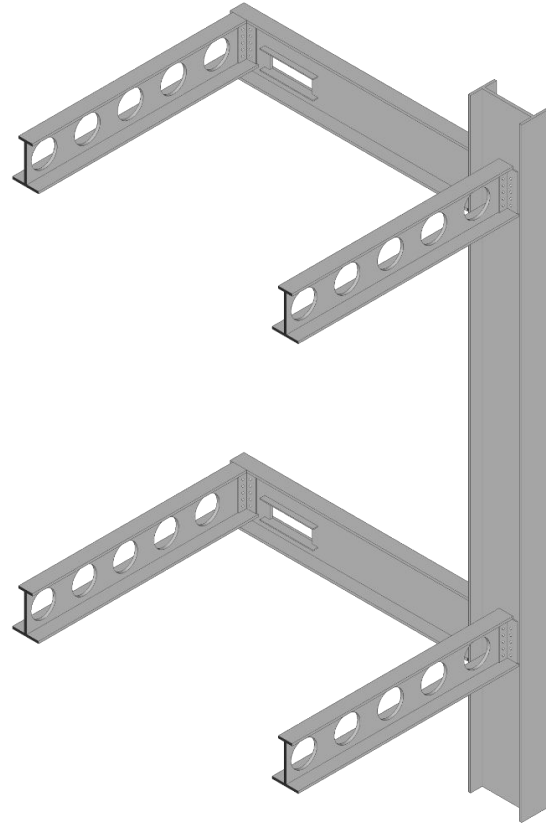
Efficient Core Placement

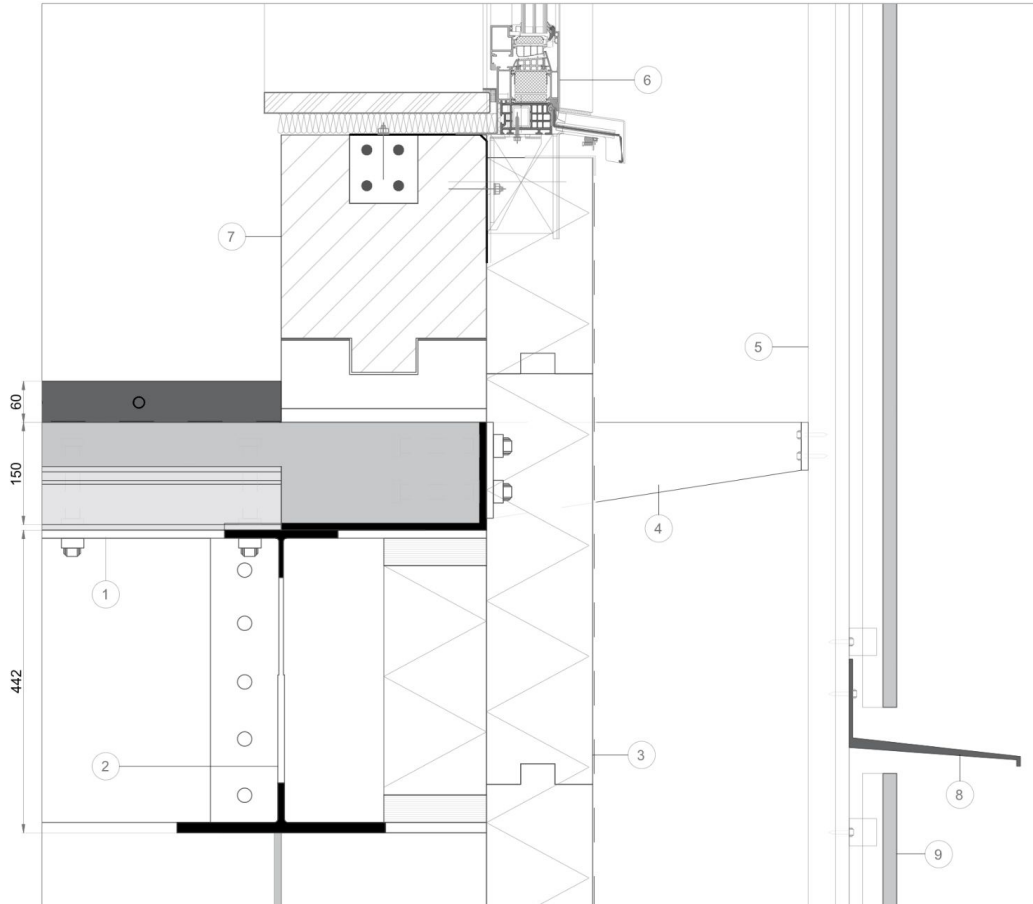


Flexibility for Adaptation



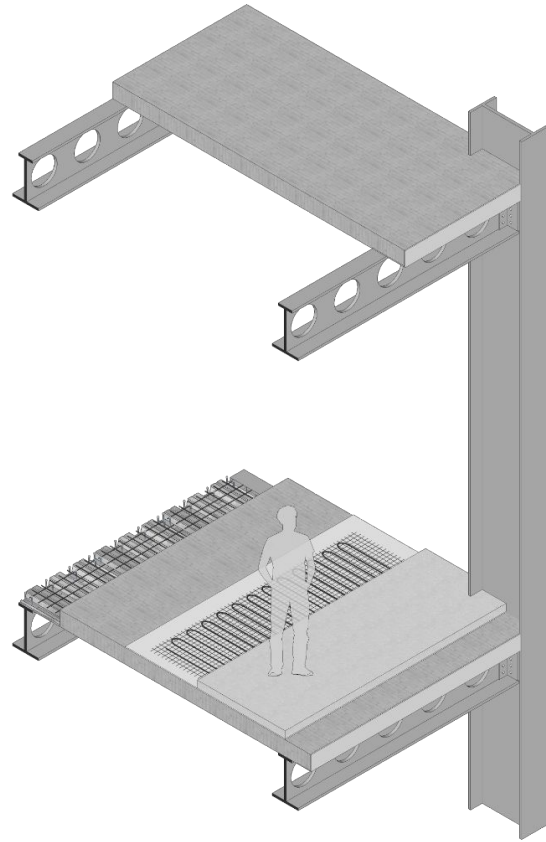
North Oriented Permeable Facade

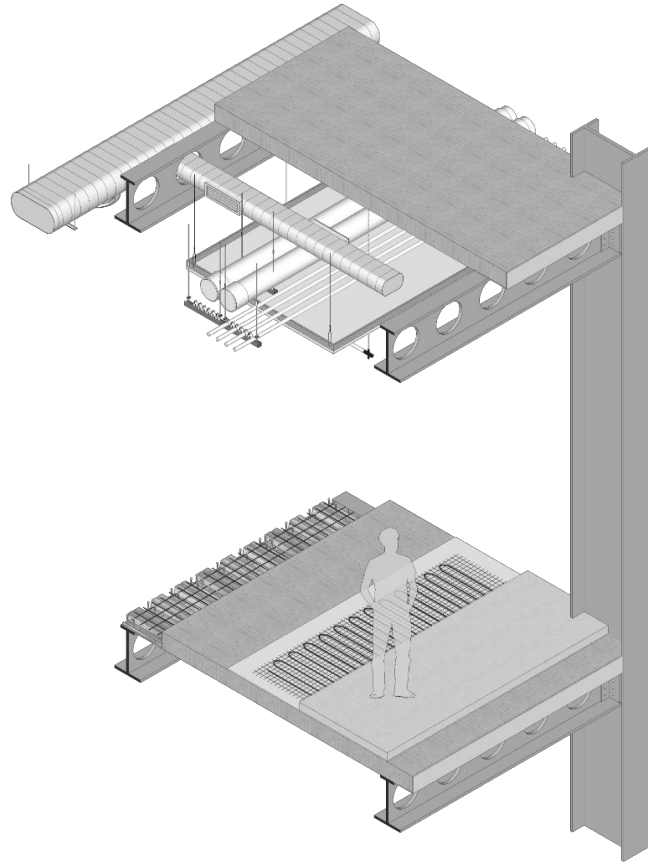


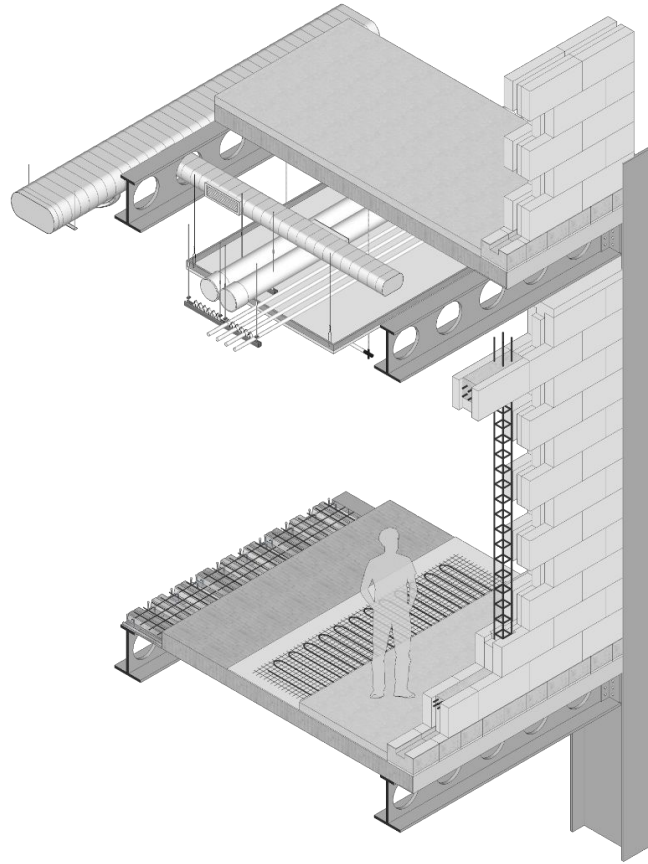


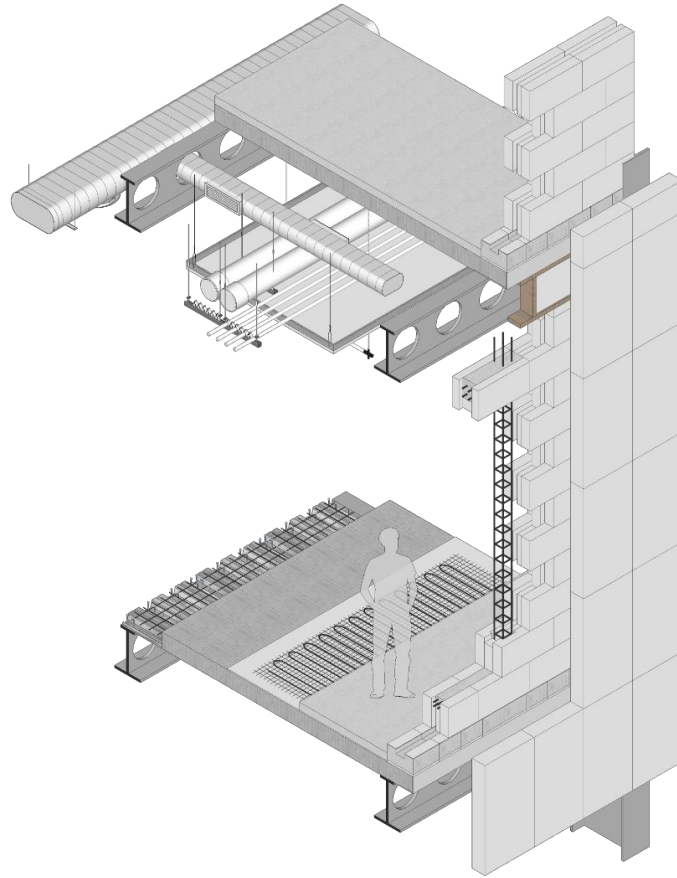
1. composite floor slab
steel deck 8mm
in situ concrete 150mm
underfloor membrane
poured polished concrete with
integrated floor heating 60mm
2. structural cellular beam with 300mm
web openings.
3. weatherproof membrane
woodfiber insulation 160mm
4. steel support plate 15 mm
5. aluminium cladding profile 61mm
6. Schuco AWS 90+ window system
7. Hempblock masonry wall
water repellant mortar 20mm
concrete starter block
polythene damp course
hempblock LB 300 S 6000 x 300
in situ concrete reinforcement for
windows
8. aluminium trim profile
9. glass 15mm
aluminium frame 300 mm profile

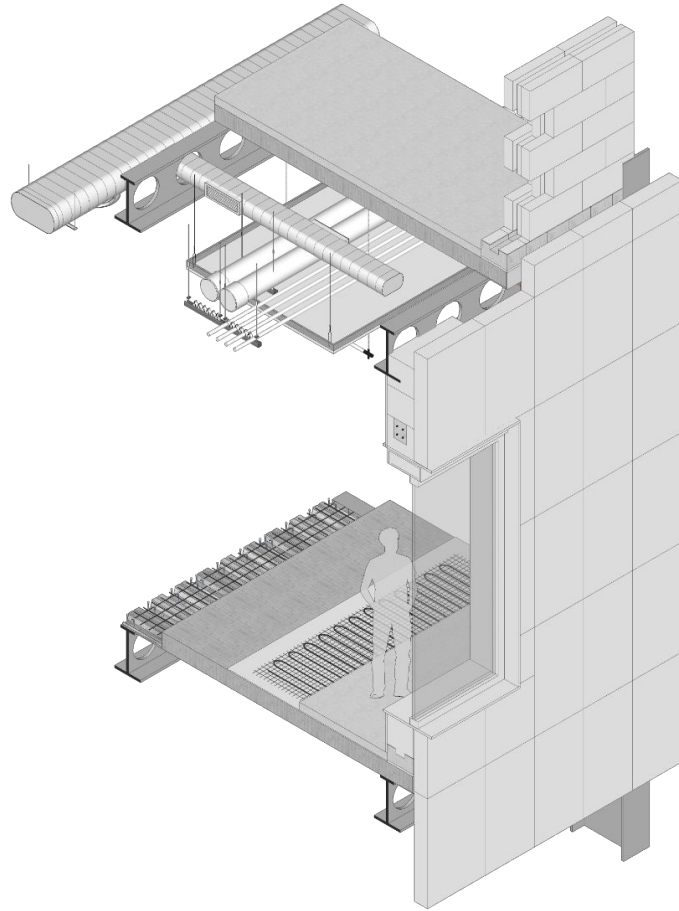
Vertical Facade Detail 1:5

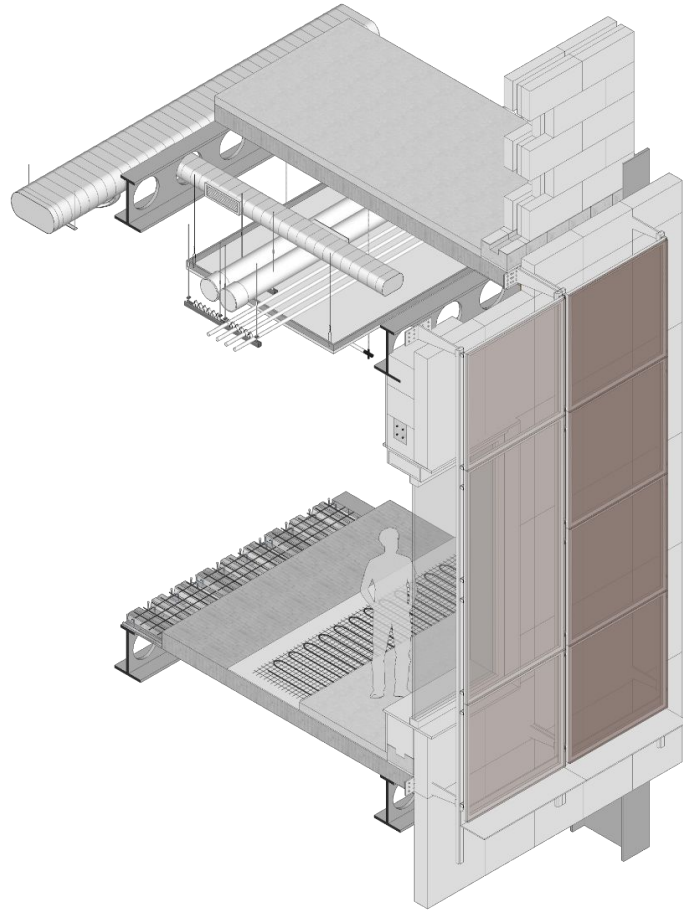




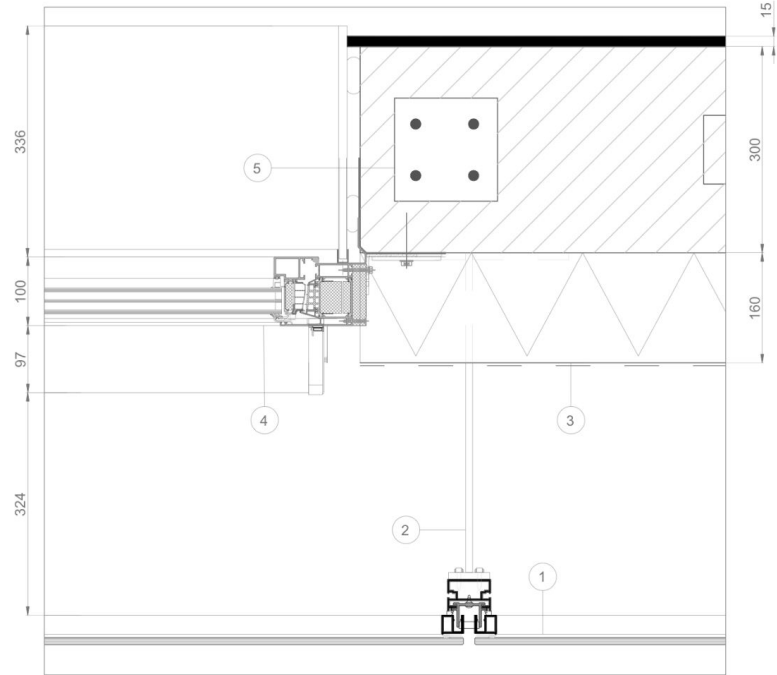
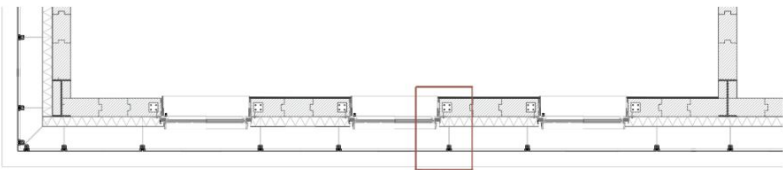






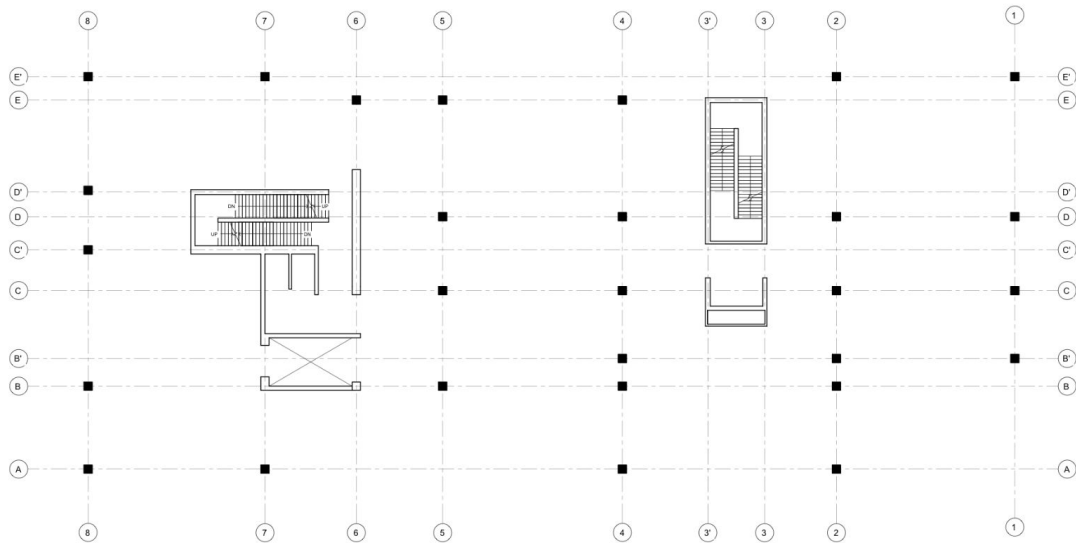


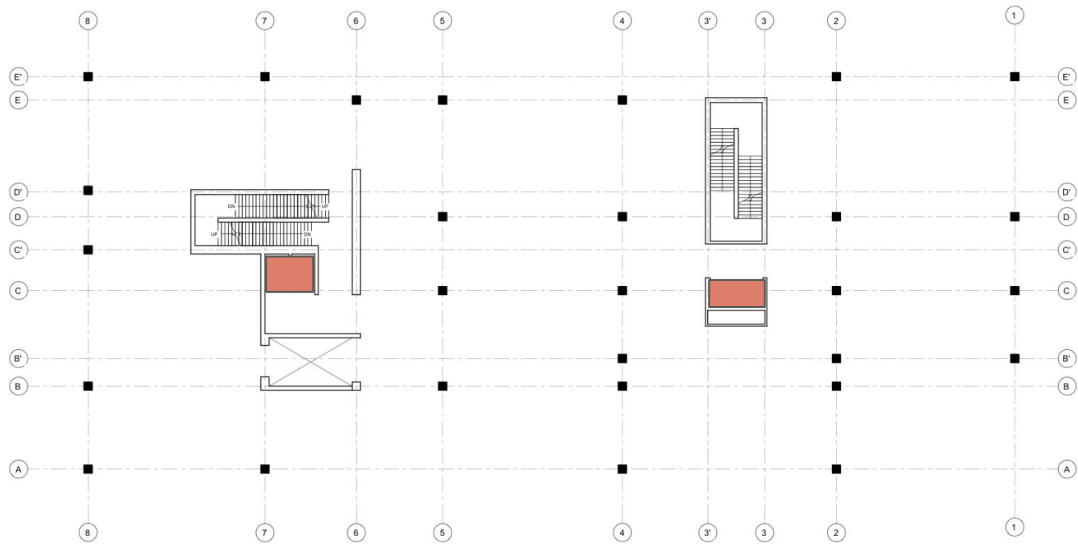


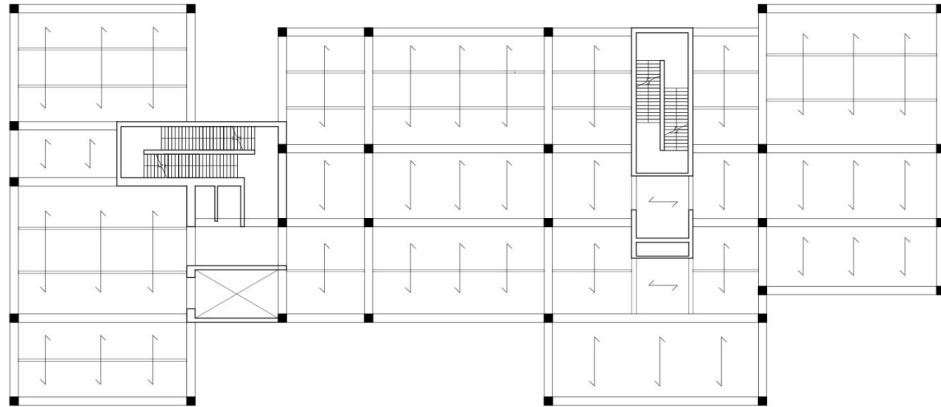


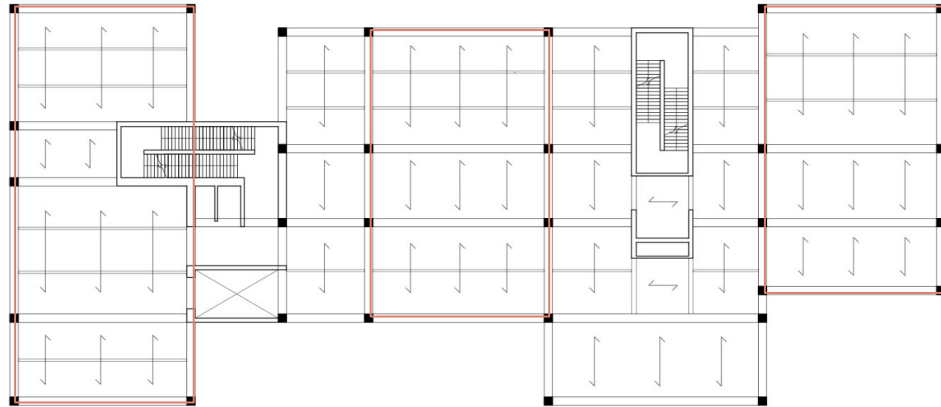
Horizontal Facade Detail 1:5

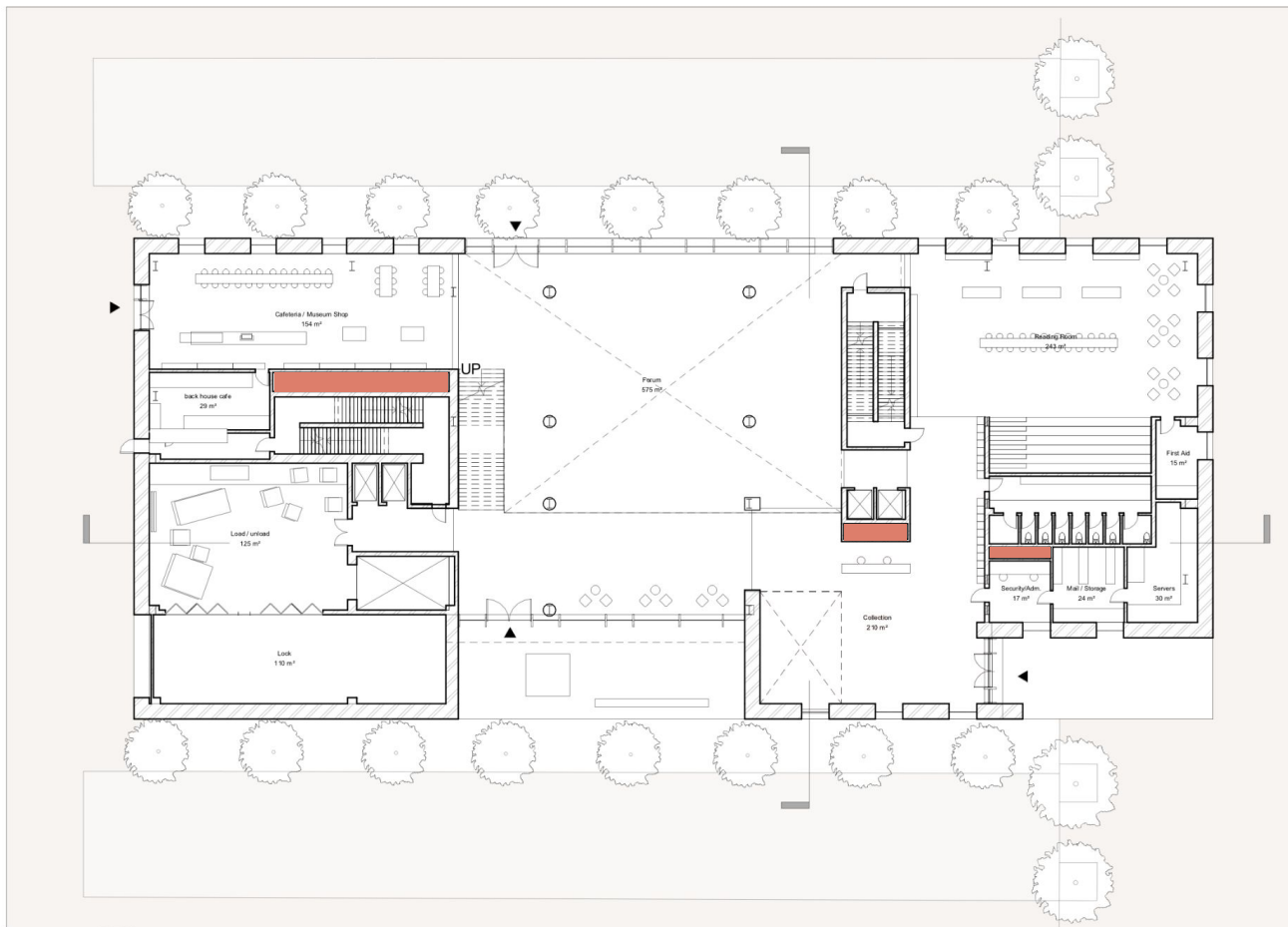
1. glass 15mm
- aluminium frame 300 mm profile
2. steel support plate 15 mm
- aluminium vertical profile 61mm
3. weather proof membrane
- woodfiber insulation 160 mm
- moisture barrier
- hemblock masonry 300 mm
4. 160mm woodfiber thermo insulation
5. Schuco AWS 90+ window system
6. in situ concrete reinforced column 150 x 150mm

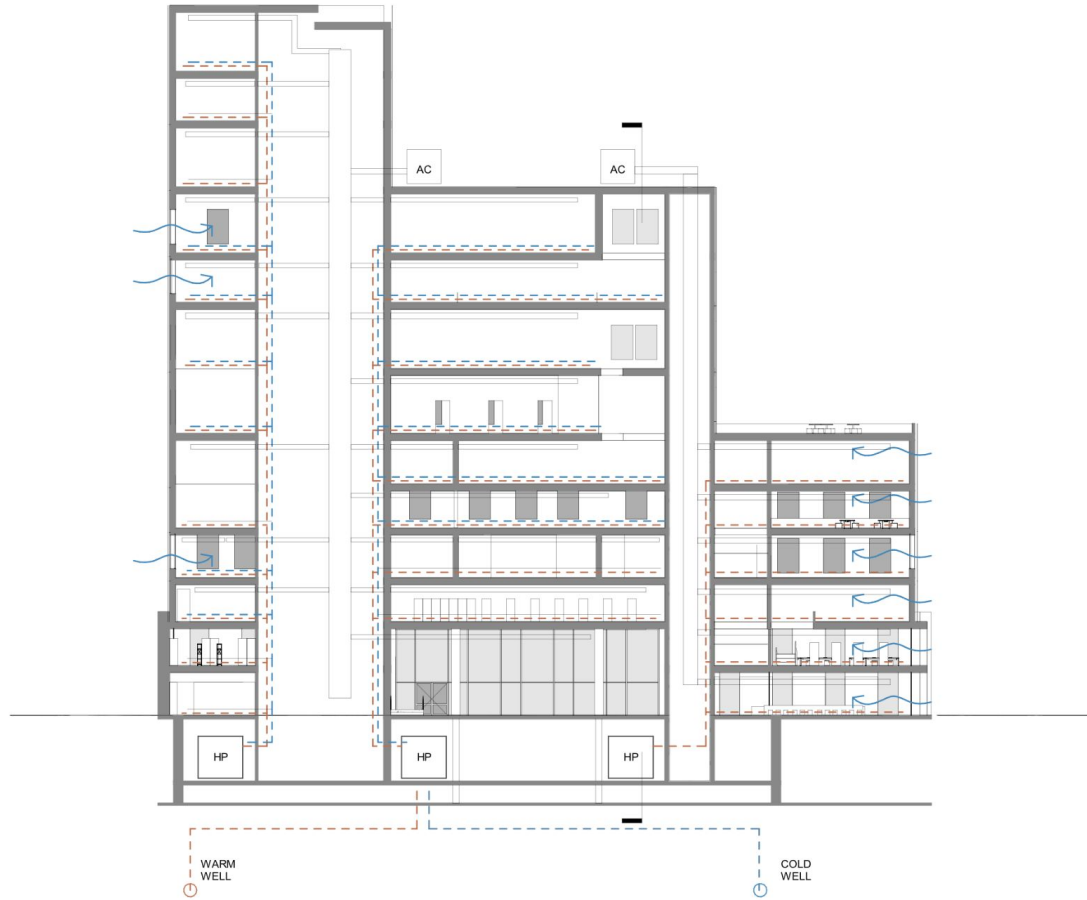








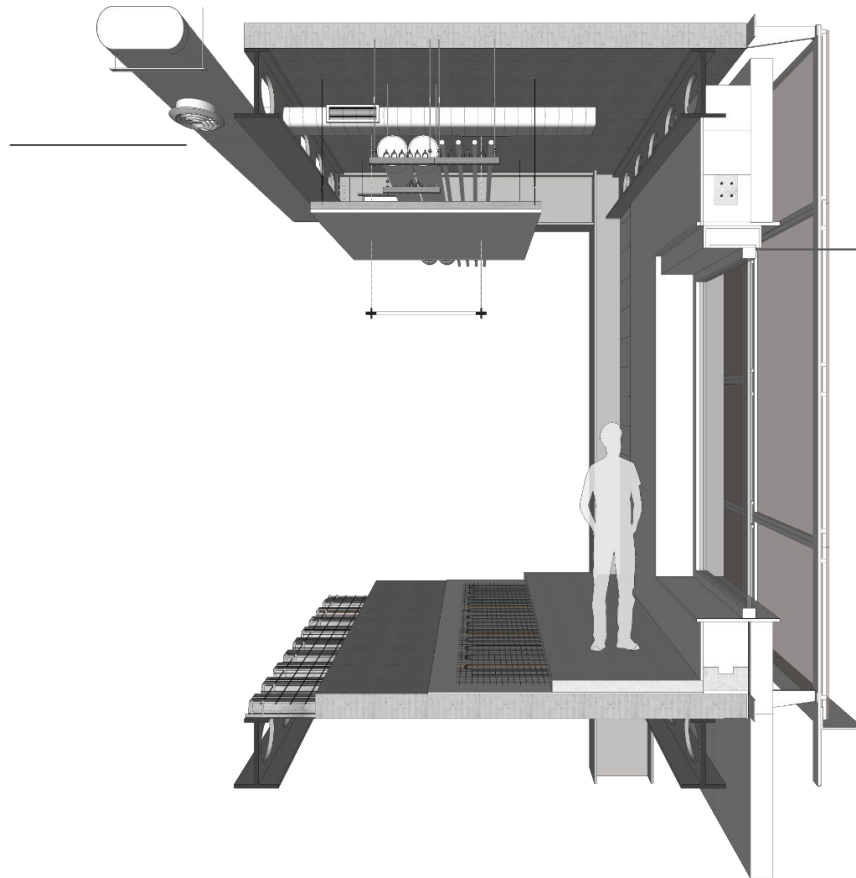






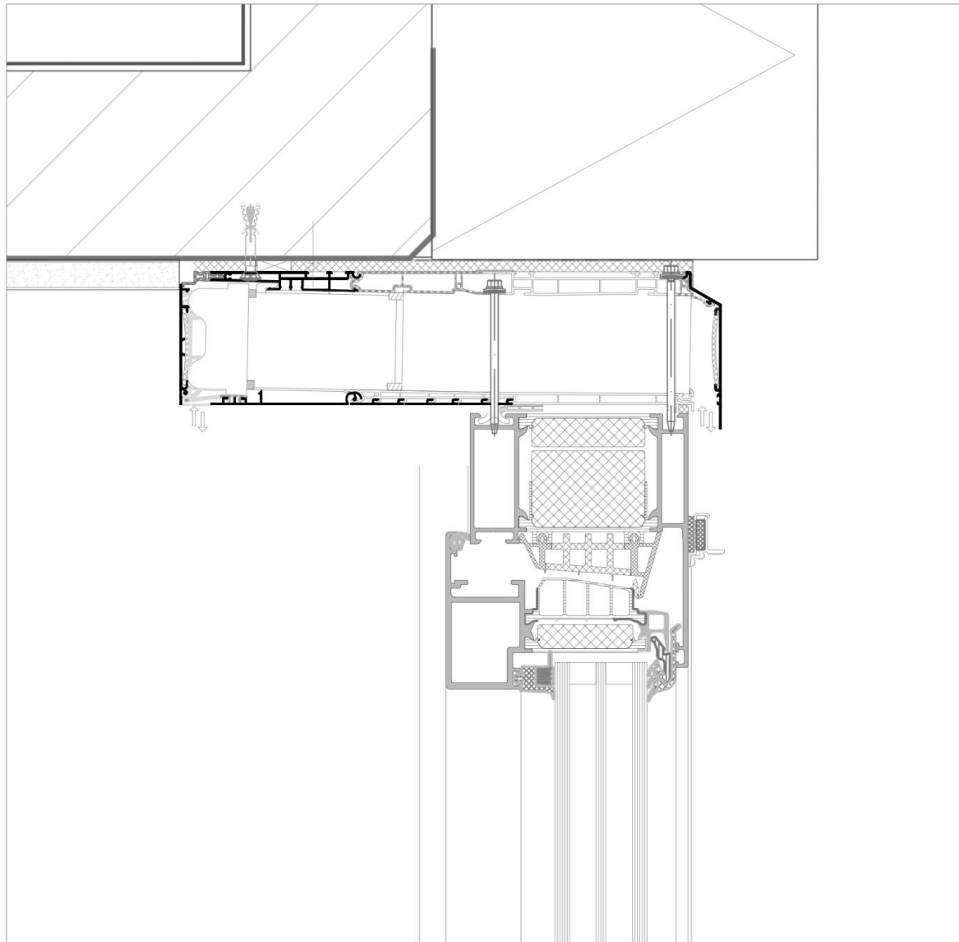
Central Ventilation System

Serviced from the top



Decentralized Ventilation System

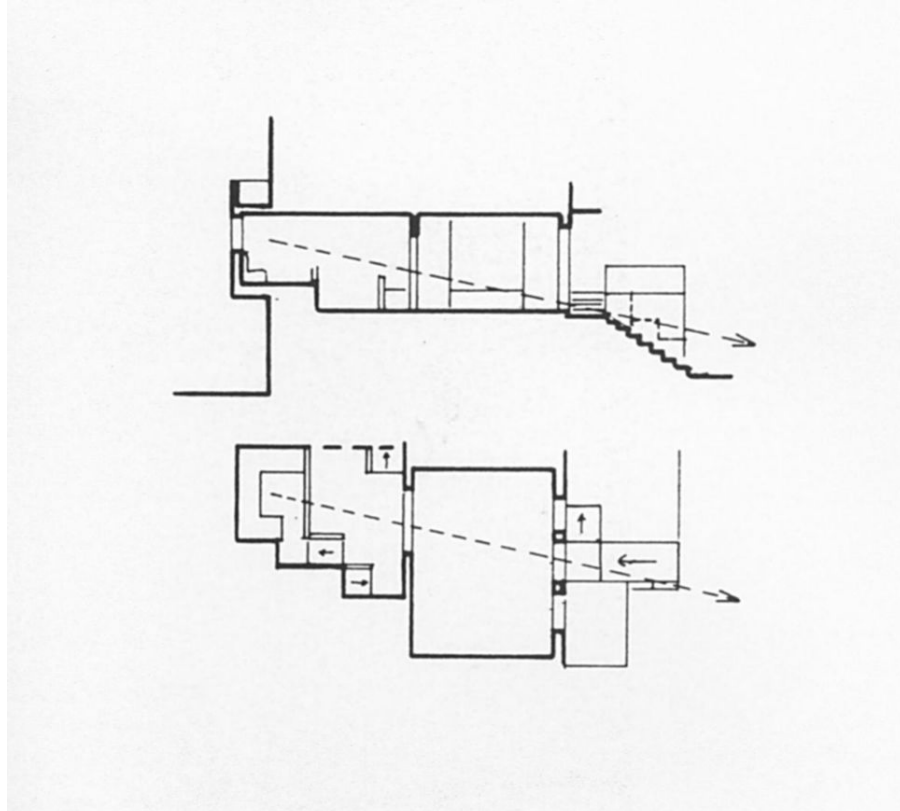
Mechanical ventilator attached to Window frame with heat recovery system.

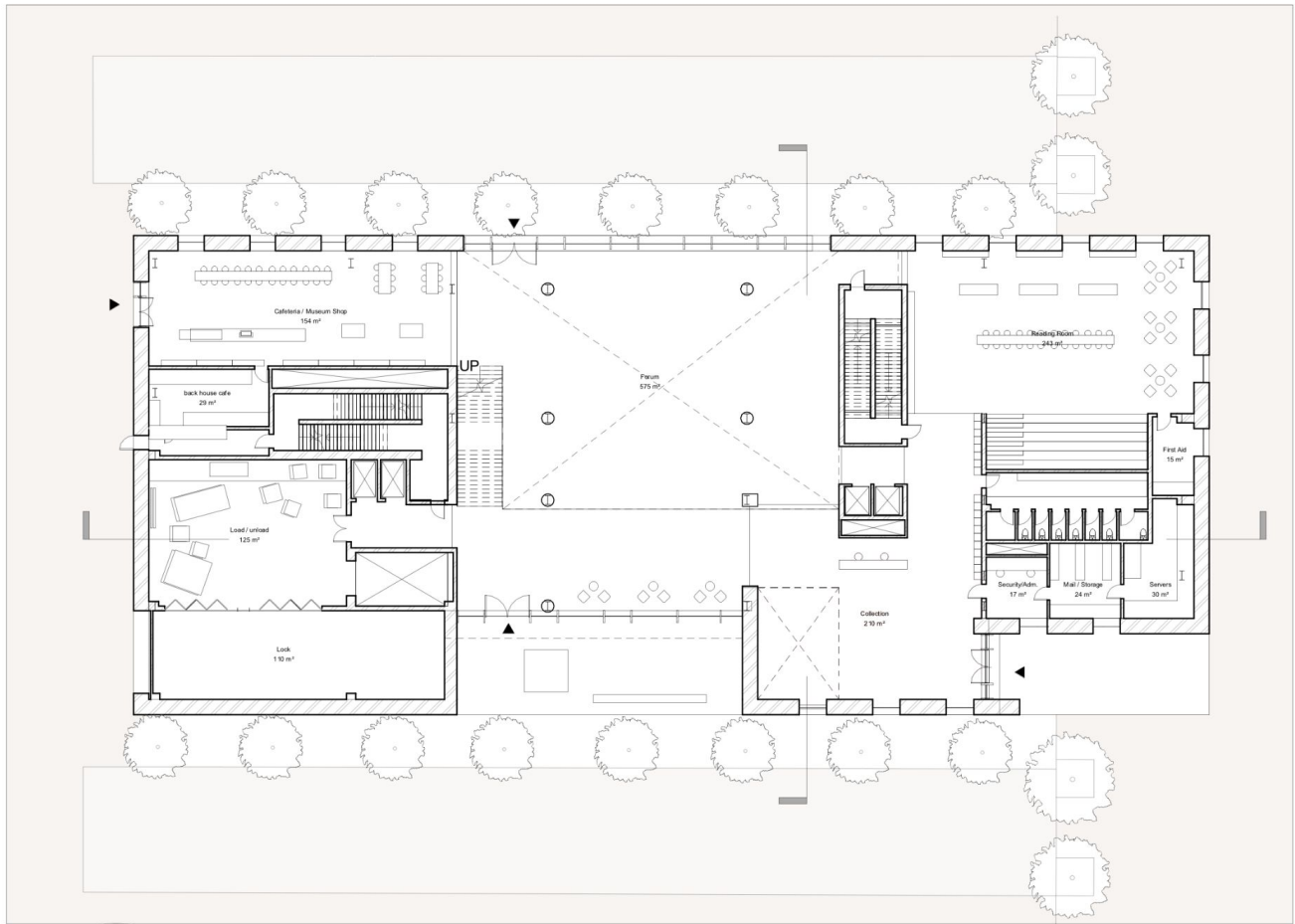


Decentralized window ventilation system Detail 1:2

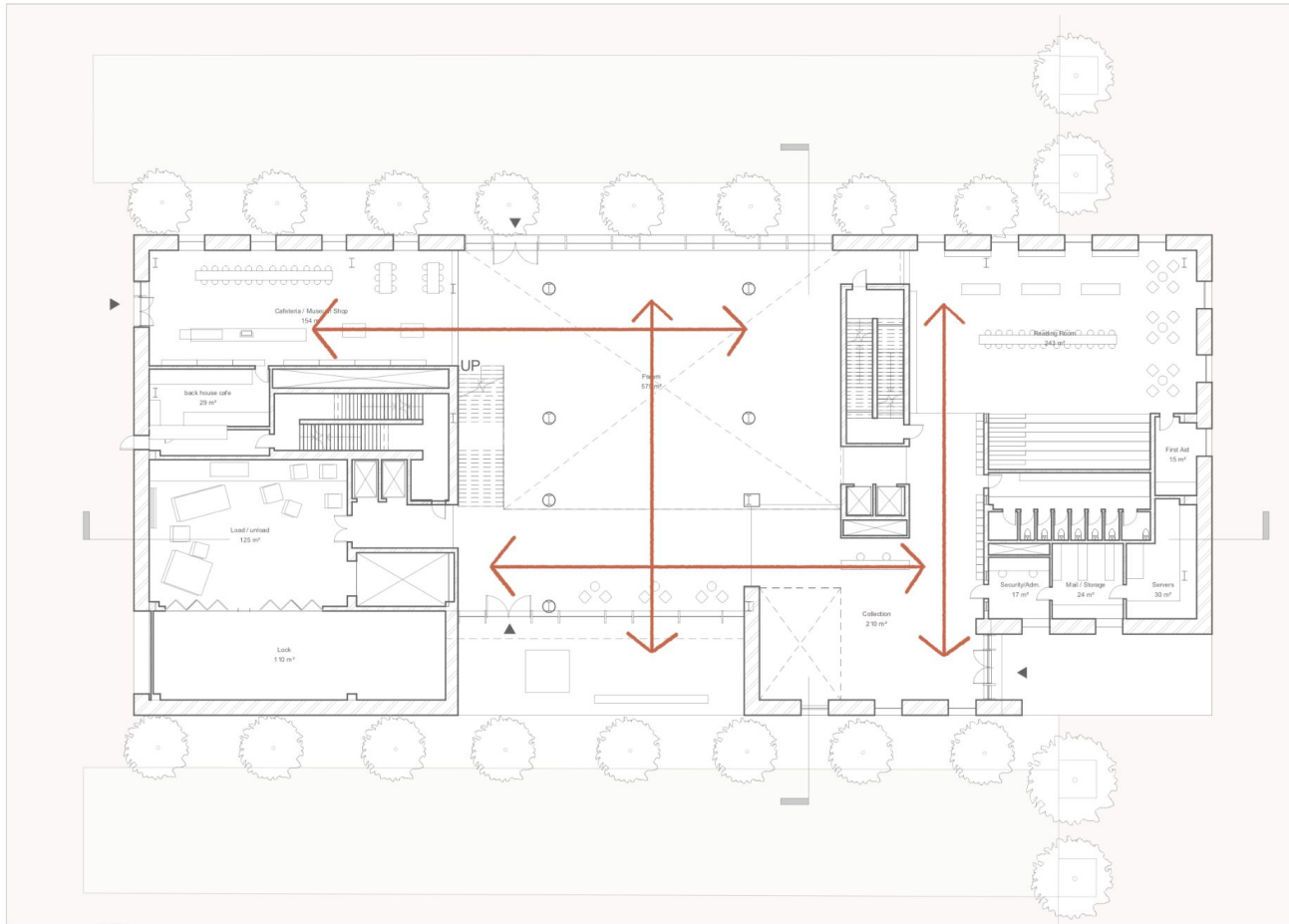


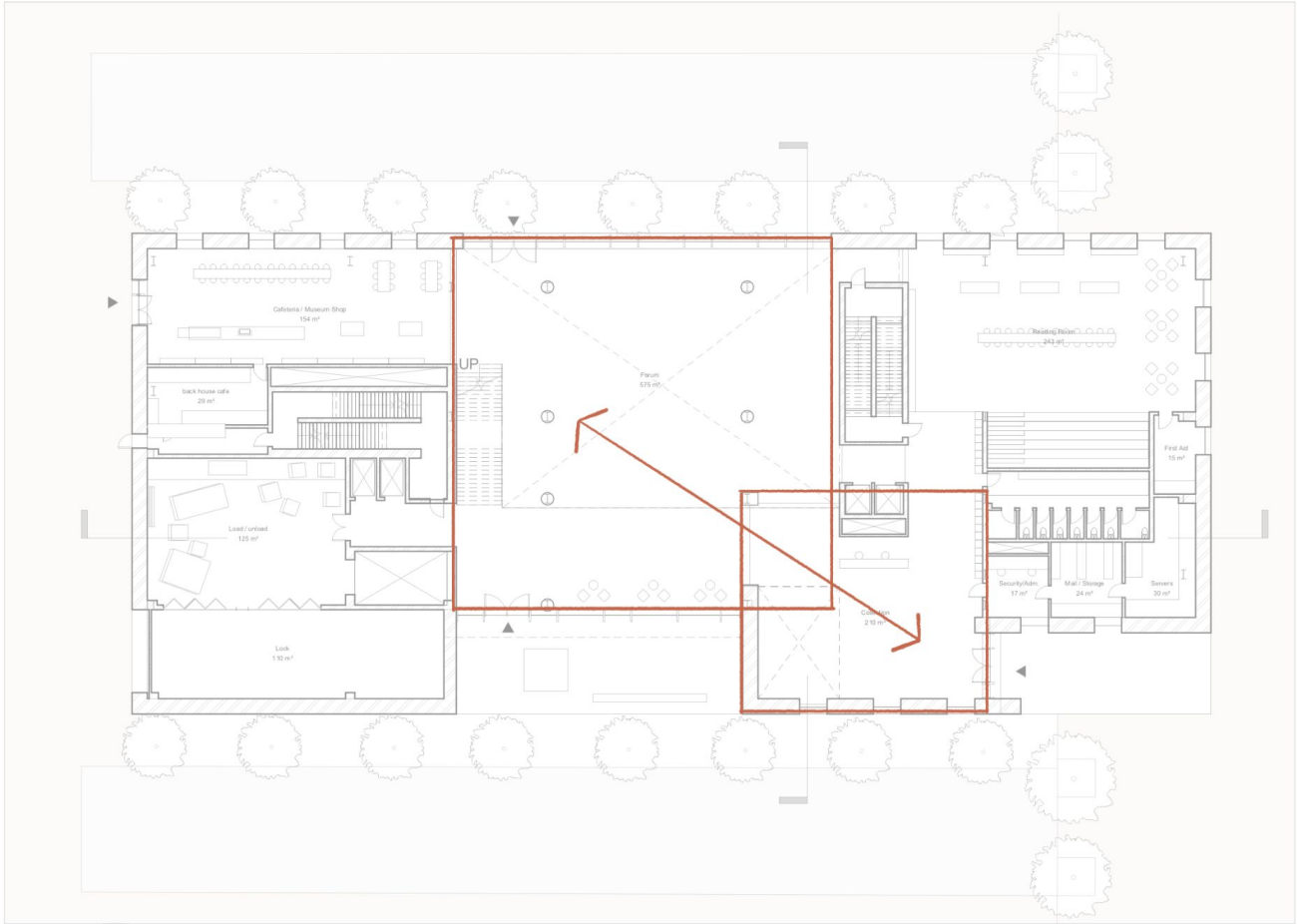


























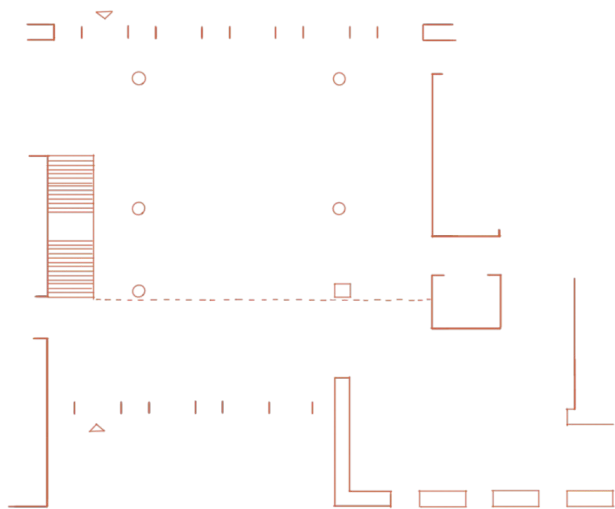


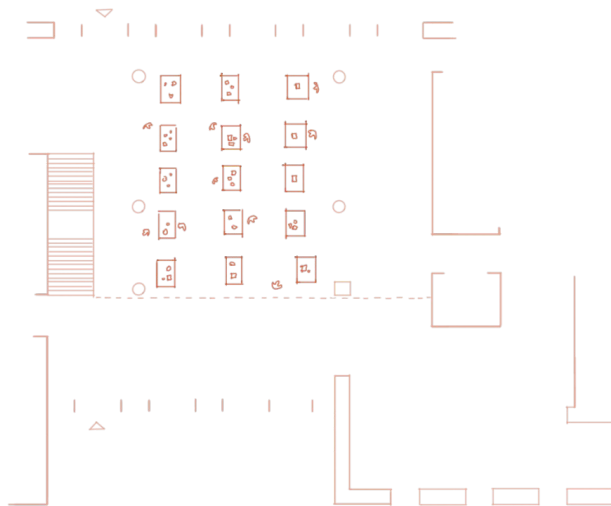


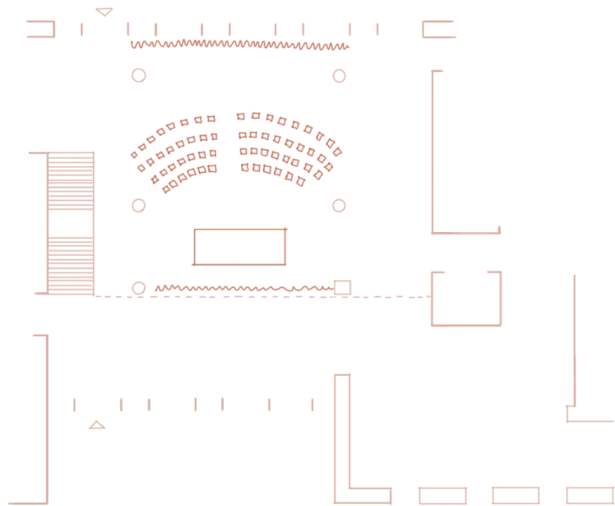


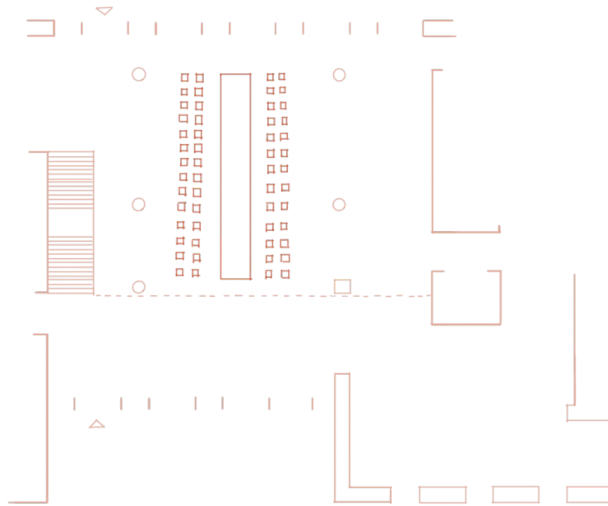


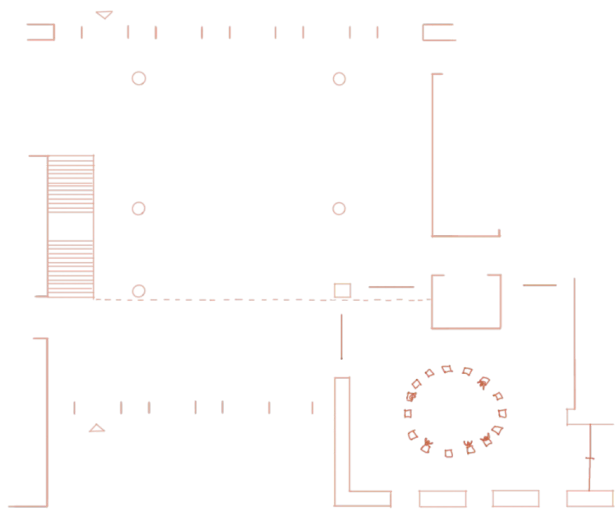


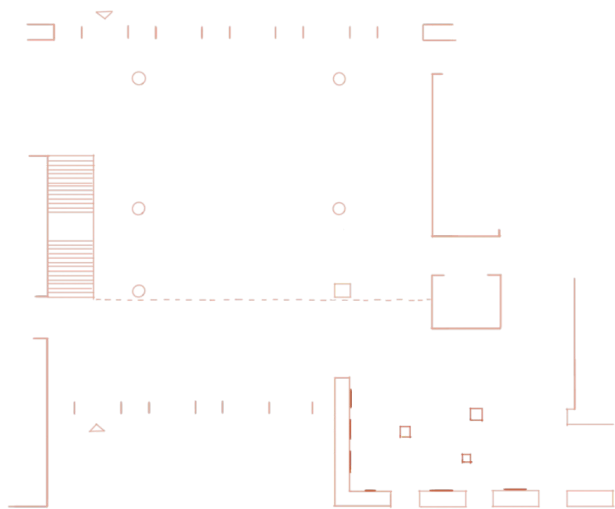


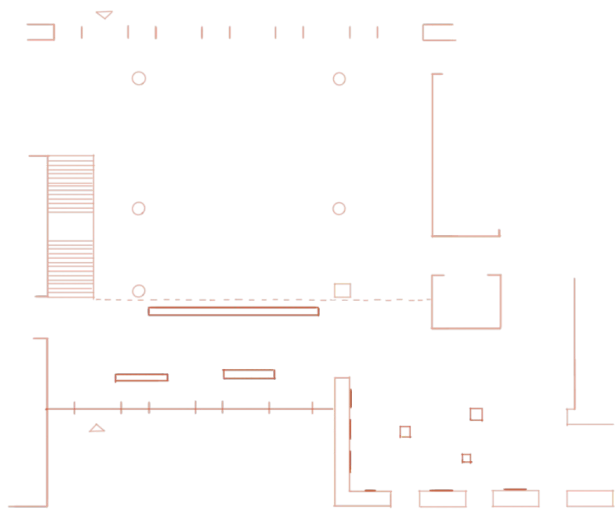


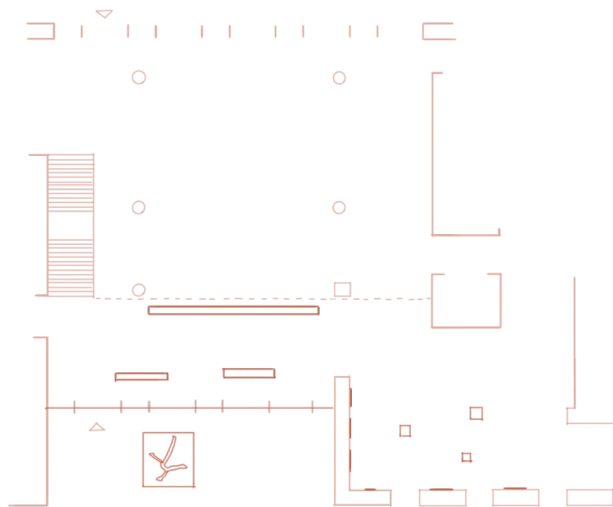


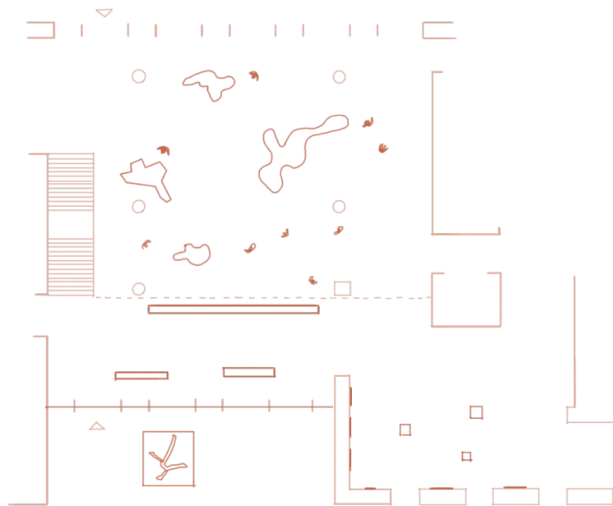




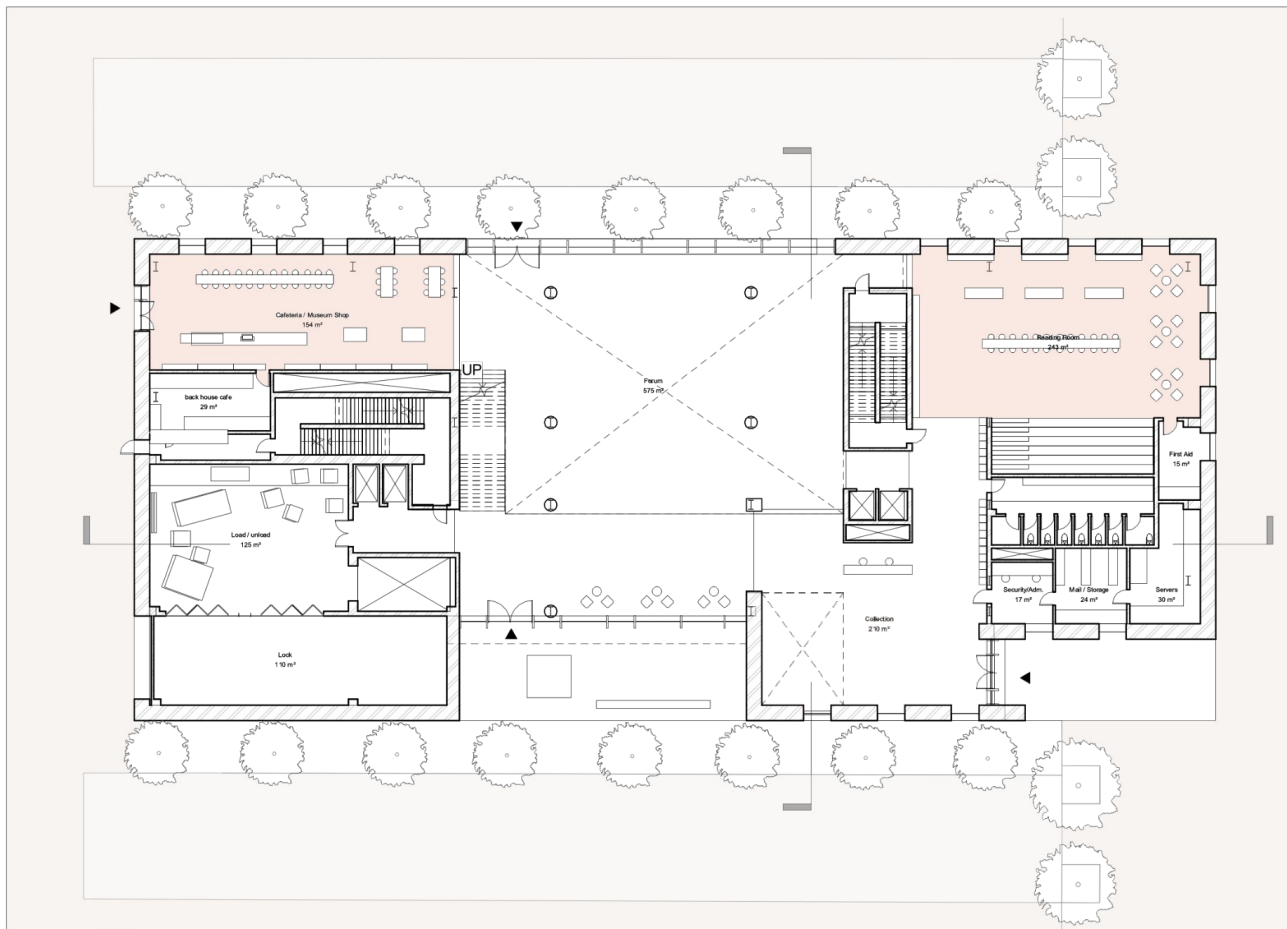


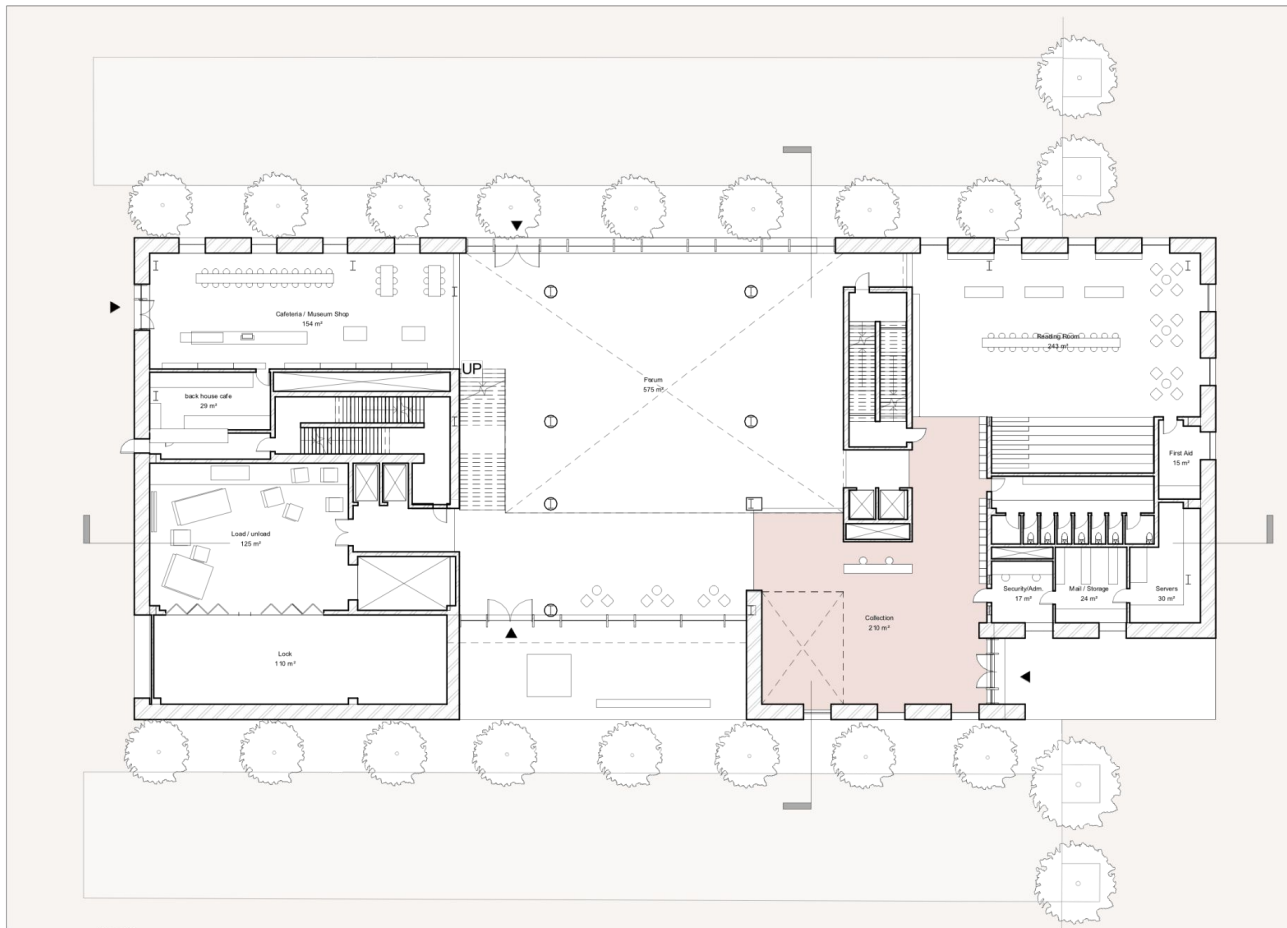
































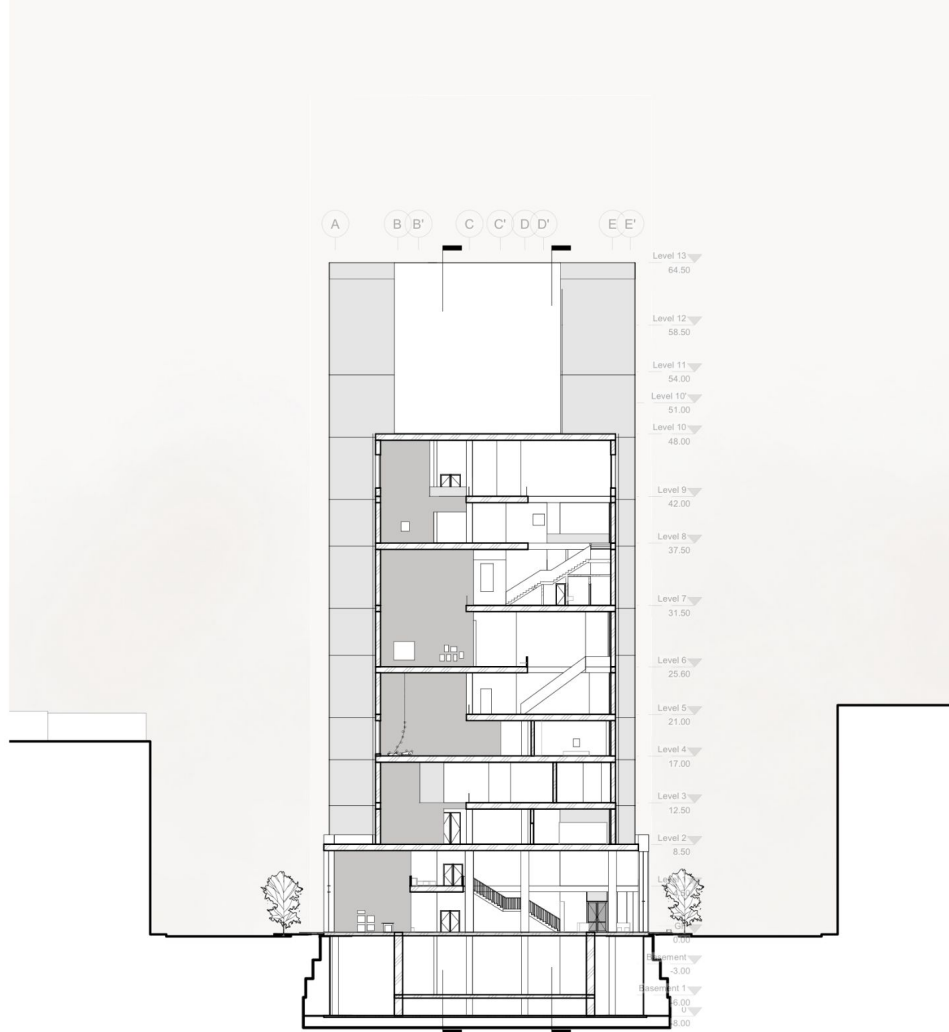






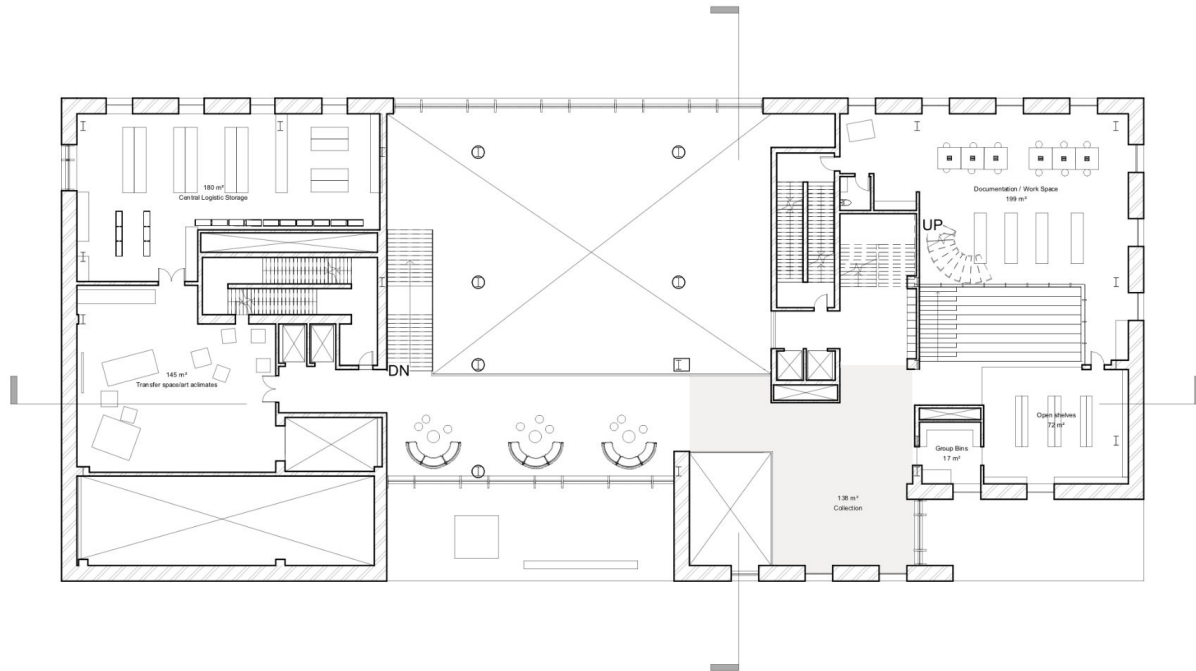


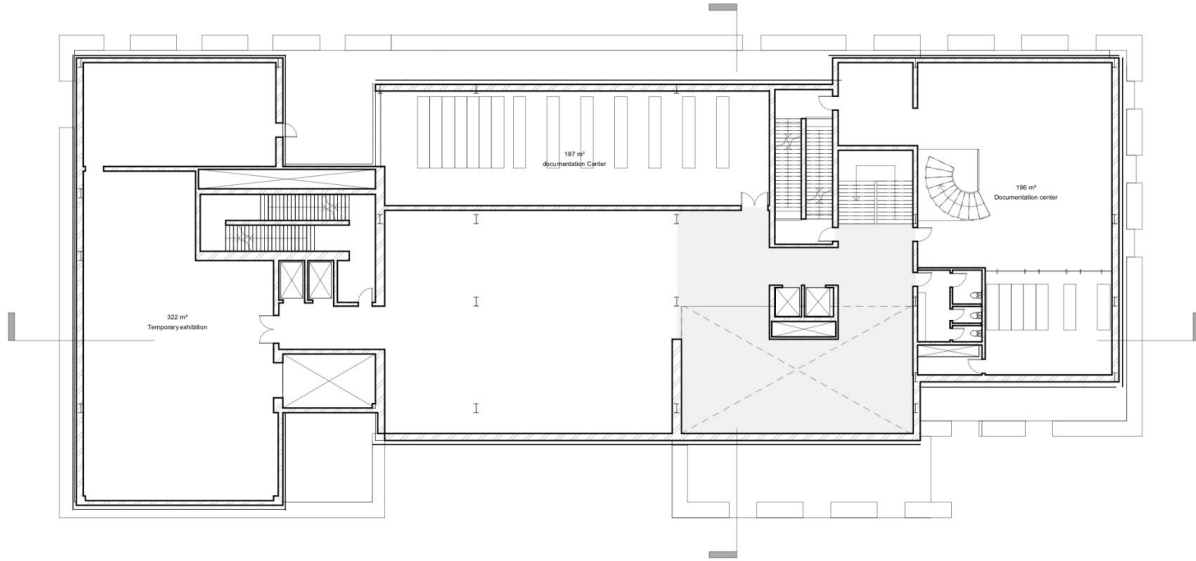


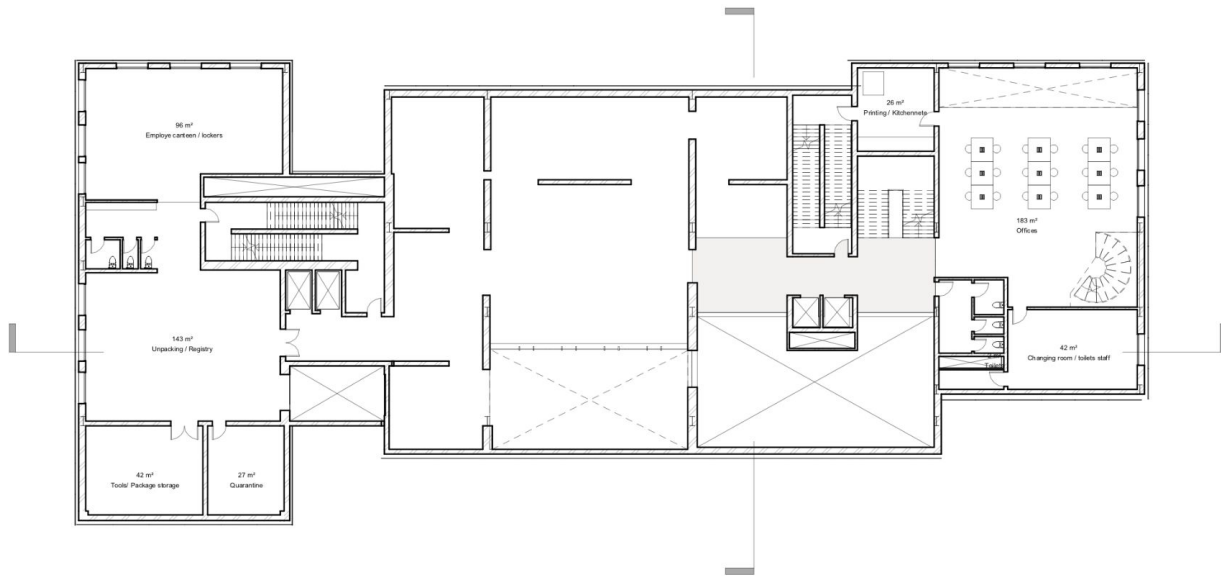


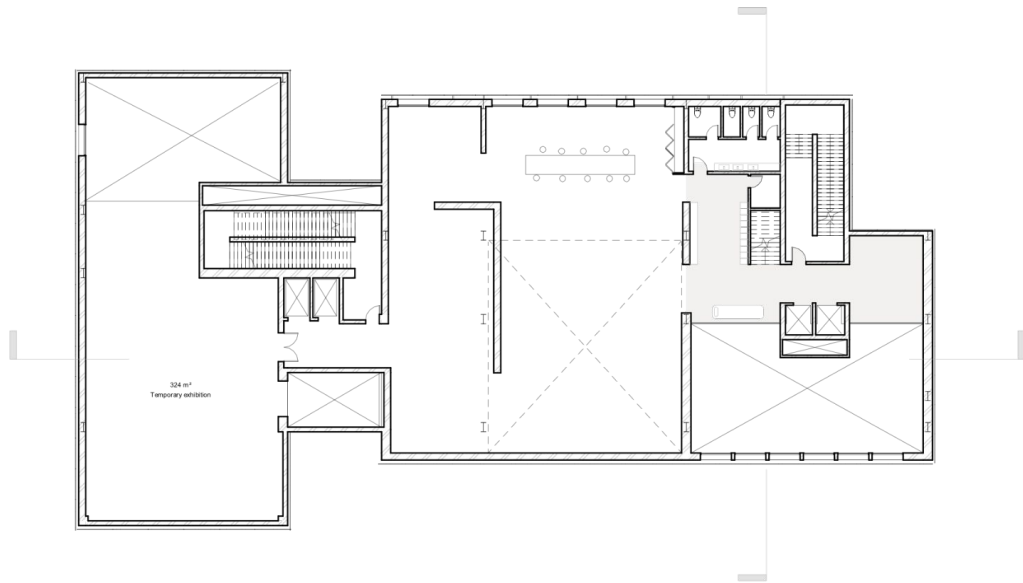


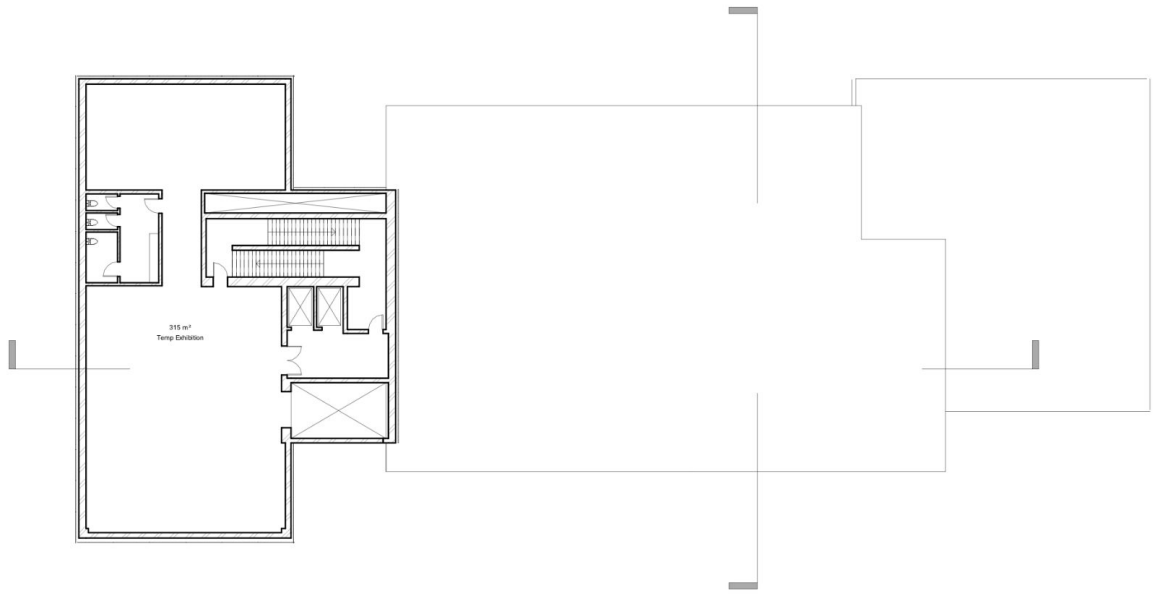


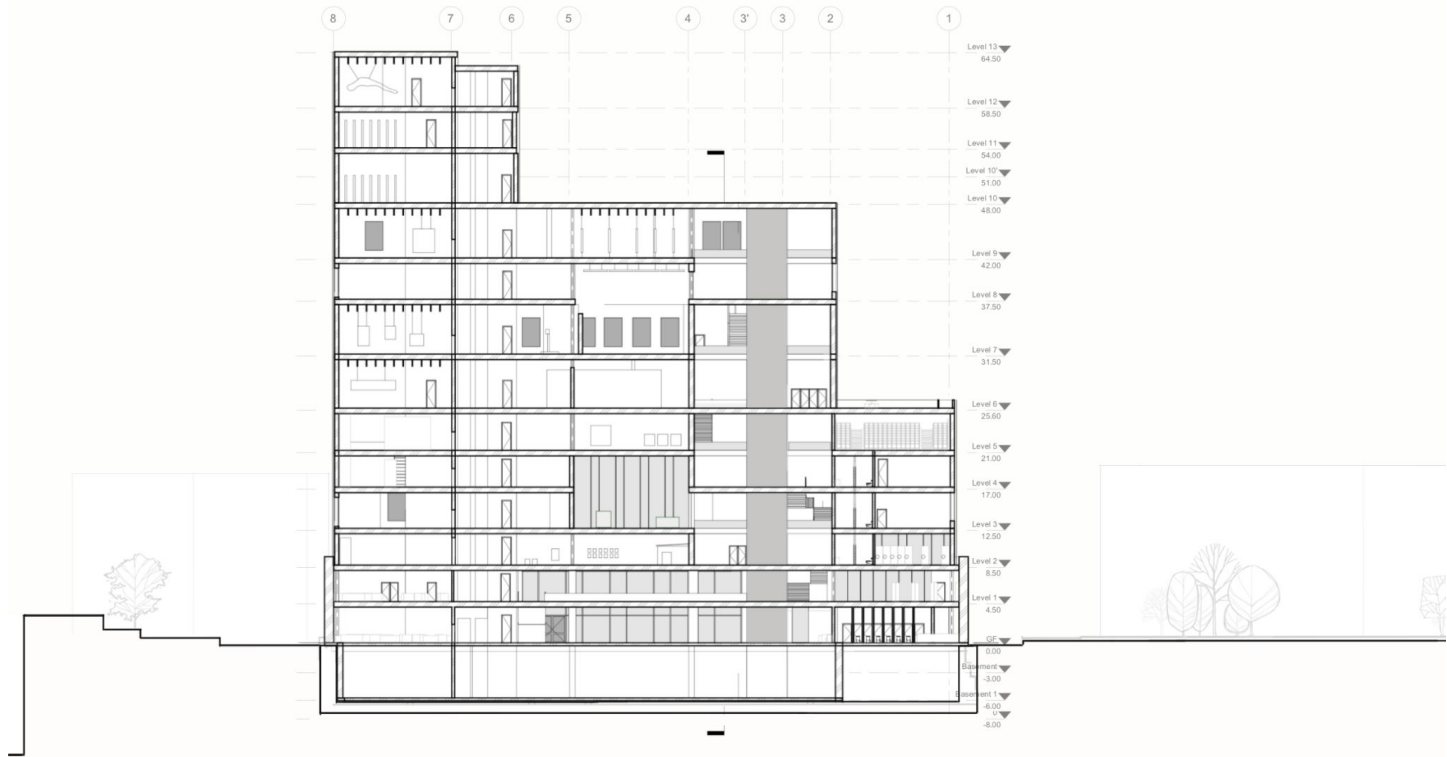


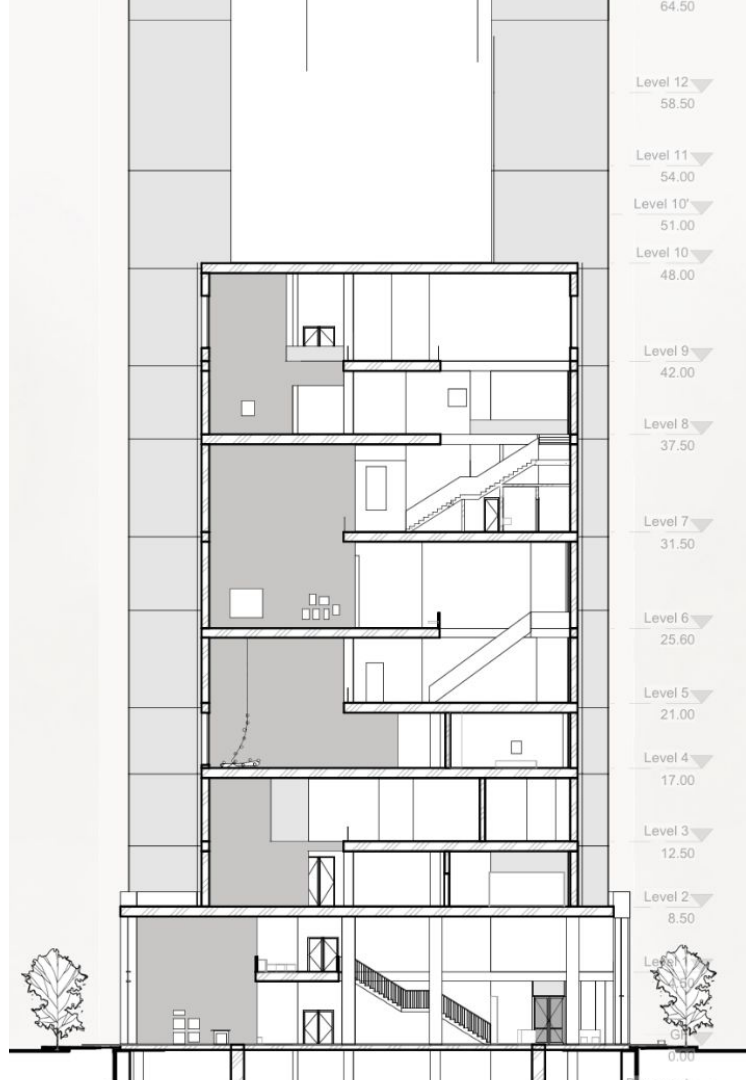




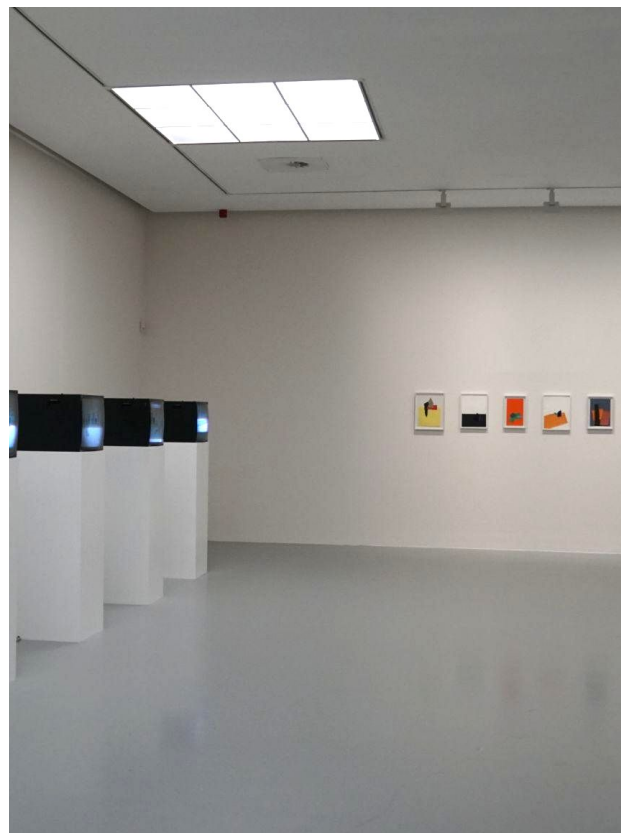








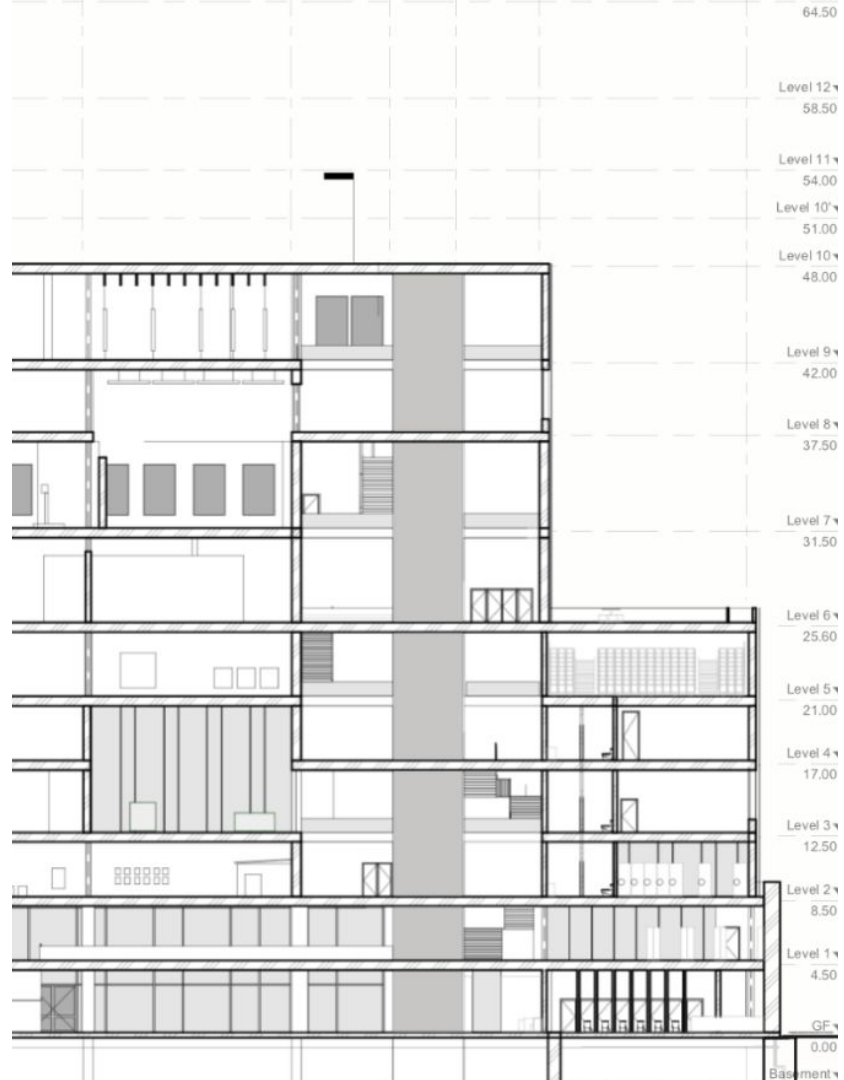






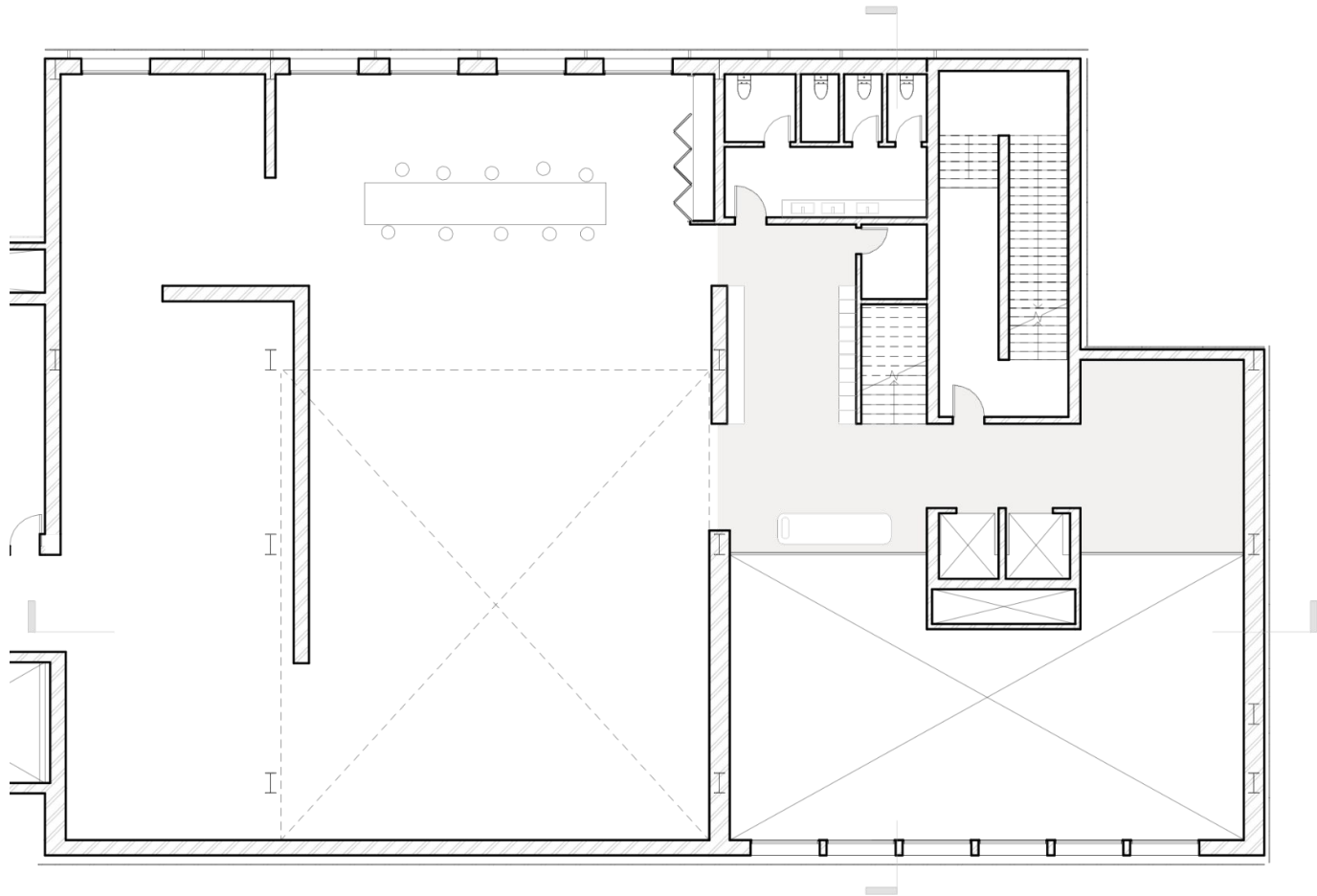






























DANKJEWEL